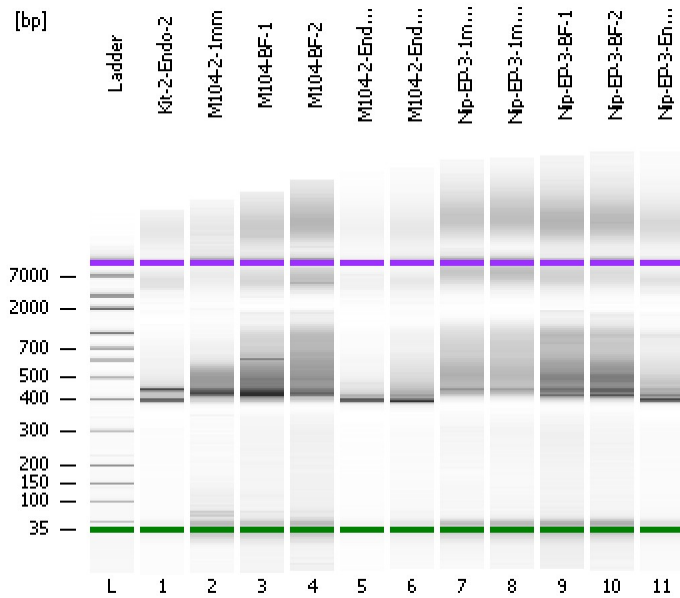


Assay Class: High Sensitivity DNA Assay
Data Path: C:\...ents and Settings\Bioanalyzer\2012-08-29\2012-08-29_002.xad

Created: 8/29/2012 12:11:13 PM
Modified: 8/29/2012 12:54:52 PM

Electrophoresis File Run Summary



Instrument Information:

Instrument Name: DE13701086 Firmware: C.01.069
Serial#: DE13701086 Type: G2938B

Assay Information:

Assay Origin Path: C:\Program Files\Agilent\2100 bioanalyzer\2100 expert\assays\dsDNA\High Sensitivity DNA.xsy
Assay Class: High Sensitivity DNA Assay
Version: 1.03
Assay Comments: Copyright © 2003-2010 Agilent Technologies

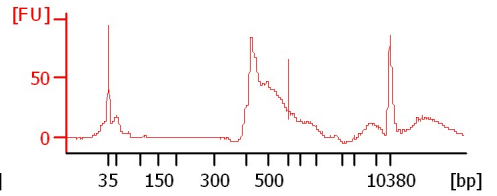
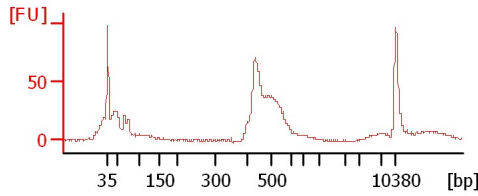
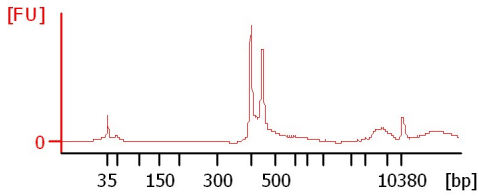
Chip Information:

Chip Lot #:
Reagent Kit Lot #:
Chip Comments:

Kit-2-Endo-2

M104-2-1mm

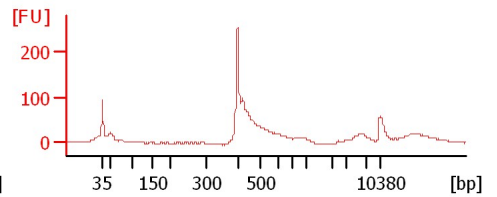
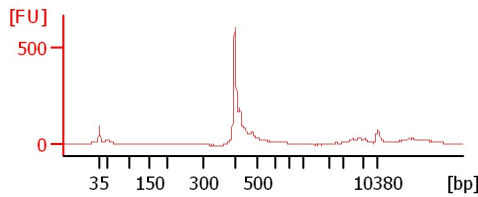
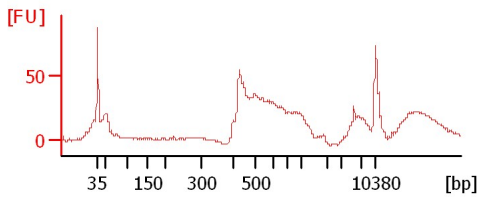
M104-BF-1



M104-BF-2

M104-2-Endo-1

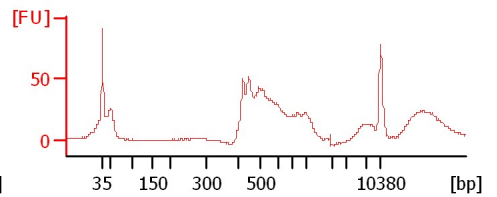
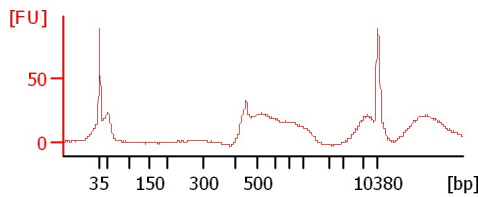
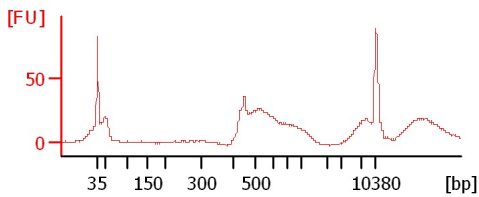
M104-2-Endo-2



Nip-EP-3-1mm-1

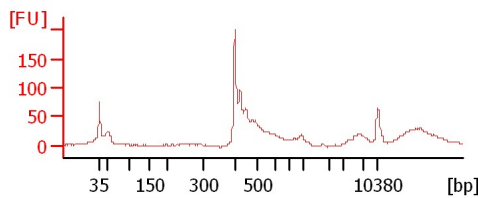
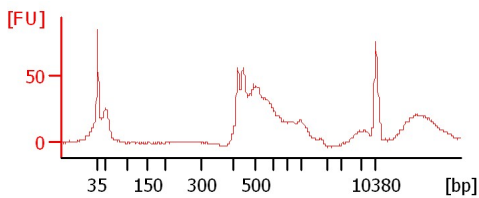
Nip-EP-3-1mm-2

Nip-EP-3-BF-1



Nip-EP-3-BF-2

Nip-EP-3-Endo-1



Assay Class: High Sensitivity DNA Assay
 Data Path: C:\...ents and Settings\Bioanalyzer\2012-08-29\2012-08-29_002.xad

Created: 8/29/2012 12:11:13 PM
 Modified: 8/29/2012 12:54:52 PM

Electrophoresis File Run Summary (Chip Summary)

Sample Name	Sample Comment	Rest. Digest	Status	Observation	Result Label	Result Color
Kit-2-Endo-2		<input type="checkbox"/>	✓			
M104-2-1mm		<input type="checkbox"/>	✓			
M104-BF-1		<input type="checkbox"/>	✓			
M104-BF-2		<input type="checkbox"/>	✓			
M104-2-Endo-1		<input type="checkbox"/>	✓			
M104-2-Endo-2		<input type="checkbox"/>	✓			
Nip-EP-3-1mm-1		<input type="checkbox"/>	✓			
Nip-EP-3-1mm-2		<input type="checkbox"/>	✓			
Nip-EP-3-BF-1		<input type="checkbox"/>	✓			
Nip-EP-3-BF-2		<input type="checkbox"/>	✓			
Nip-EP-3-Endo-1		<input type="checkbox"/>	✓			
Ladder		<input type="checkbox"/>	✓			

Chip Lot #

Reagent Kit Lot #

Chip Comments :

Assay Class: High Sensitivity DNA Assay
Data Path: C:\...ents and Settings\Bioanalyzer\2012-08-29\2012-08-29_002.xad

Created: 8/29/2012 12:11:13 PM
Modified: 8/29/2012 12:54:52 PM

Electrophoresis Assay Details

General Analysis Settings

Number of Available Sample and Ladder Wells (Max.) : 12
Minimum Visible Range [s] : 32
Maximum Visible Range [s] : 138
Start Analysis Time Range [s] : 33
End Analysis Time Range [s] : 137.5
Ladder Concentration [pg/μl] : 1950
Uses Standard Area for Ladder Fragments
Lower Marker Concentration [pg/μl] : 125
Upper Marker Concentration [pg/μl] : 75
Used Upper Marker for Quantitation
Standard Curve Fit is Point to Point
Show Data Aligned to Lower and Upper Marker

Integrator Settings

Integration Start Time [s] : 33.05
Integration End Time [s] : 137
Slope Threshold : 0.8
Height Threshold [FU] : 5
Area Threshold : 0.1
Width Threshold [s] : 0.6
Baseline Plateau [s] : 0.5

Filter Settings

Filter Width [s] : 0.5
Polynomial Order : 4

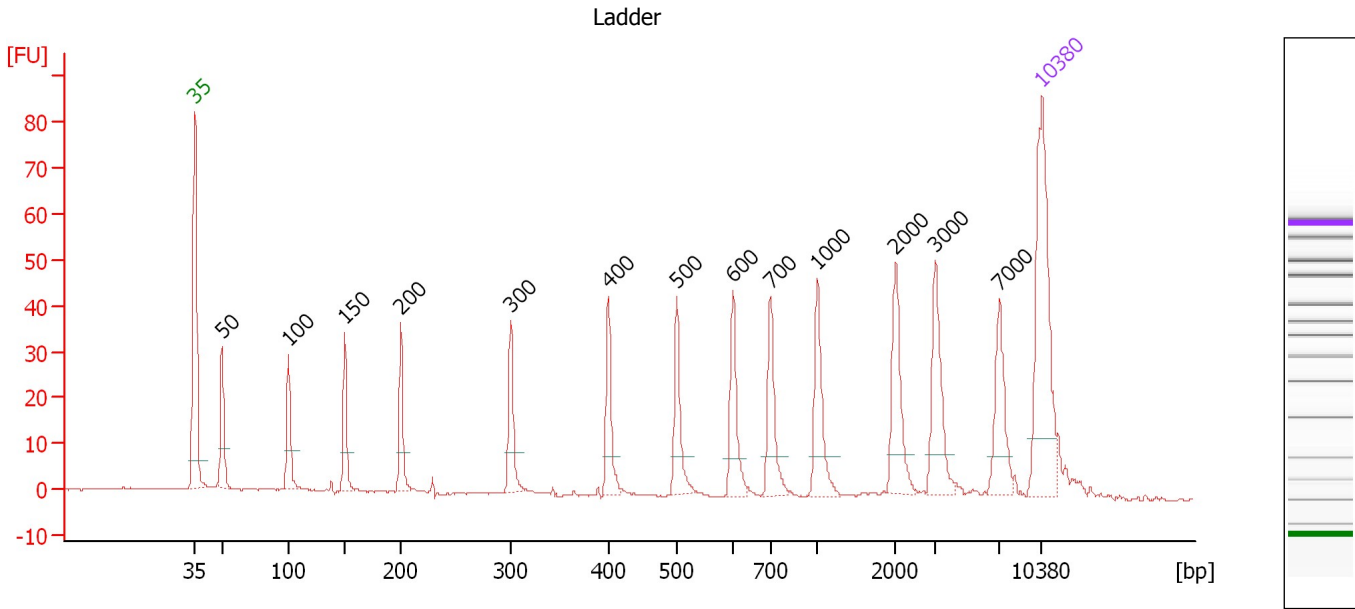
Ladder

Ladder Peak	Size	Area
1	35	160
2	50	210
3	100	208
4	150	221
5	200	242
6	300	270
7	400	305
8	500	306
9	600	336
10	700	321
11	1000	366
12	2000	413
13	3000	411
14	7000	400
15	10380	214

Assay Class: High Sensitivity DNA Assay
 Data Path: C:\...ents and Settings\Bioanalyzer\2012-08-29\2012-08-29_002.xad

Created: 8/29/2012 12:11:13 PM
 Modified: 8/29/2012 12:54:52 PM

Electropherogram Summary



Overall Results for Ladder

Noise: 0.1

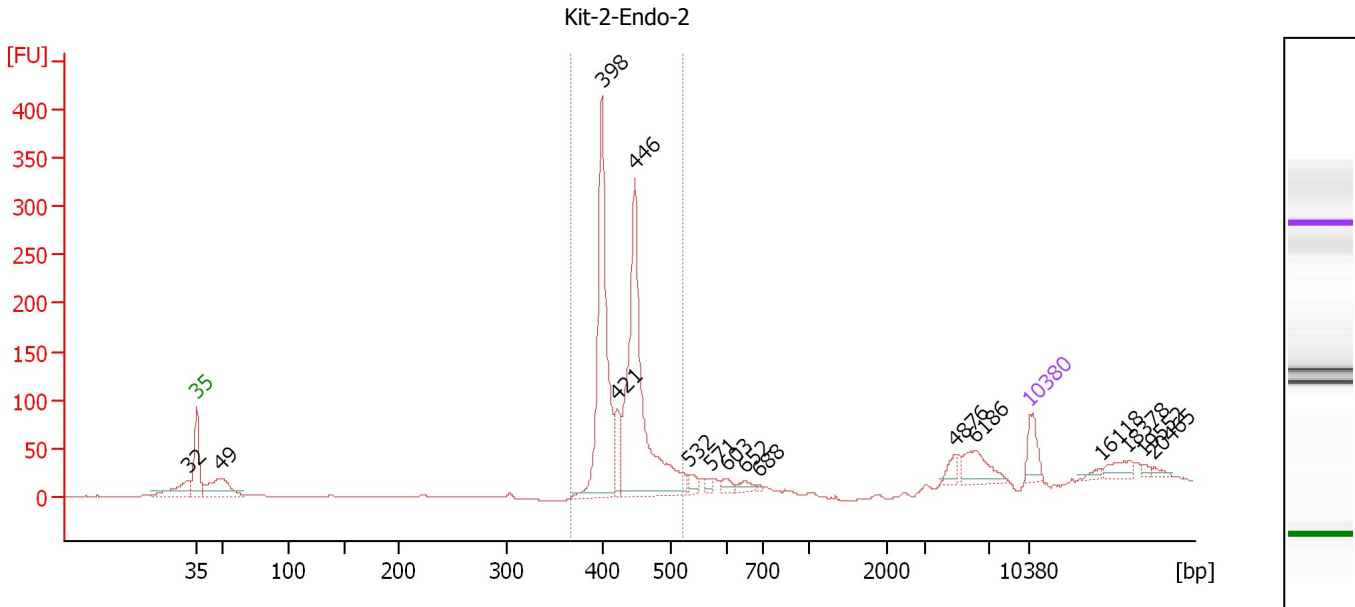
Peak table for Ladder

Peak	Size [bp]	Conc. [pg/μl]	Molarity [pmol/l]	Observations
1	35	125.00	5,411.3	Lower Marker
2	50	150.00	4,545.5	Ladder Peak
3	100	150.00	2,272.7	Ladder Peak
4	150	150.00	1,515.2	Ladder Peak
5	200	150.00	1,136.4	Ladder Peak
6	300	150.00	757.6	Ladder Peak
7	400	150.00	568.2	Ladder Peak
8	500	150.00	454.5	Ladder Peak
9	600	150.00	378.8	Ladder Peak
10	700	150.00	324.7	Ladder Peak
11	1,000	150.00	227.3	Ladder Peak
12	2,000	150.00	113.6	Ladder Peak
13	3,000	150.00	75.8	Ladder Peak
14	7,000	150.00	32.5	Ladder Peak
15	10,380	75.00	10.9	Upper Marker

Assay Class: High Sensitivity DNA Assay
 Data Path: C:\...ents and Settings\Bioanalyzer\2012-08-29\2012-08-29_002.xad

Created: 8/29/2012 12:11:13 PM
 Modified: 8/29/2012 12:54:52 PM

Electropherogram Summary Continued ...



Overall Results for sample 1 : Kit-2-Endo-2

Number of peaks found: 16 Corr. Area 1: 1,022.7
 Noise: 0.2

Peak table for sample 1 : Kit-2-Endo-2

Peak	Size [bp]	Conc. [pg/μl]	Molarity [pmol/l]	Observations
1	32	0.00	0.0	
2	35	125.00	5,411.3	Lower Marker
3	49	242.13	7,483.8	
4	398	860.99	3,274.0	
5	421	129.31	465.8	
6	446	1,051.51	3,573.5	
7	532	33.56	95.5	
8	571	19.31	51.3	
9	603	29.45	74.0	
10	652	28.44	66.1	
11	688	6.98	15.4	
12	4,876	35.12	10.9	
13	6,186	107.98	26.4	
14	10,380	75.00	10.9	Upper Marker
15	16,118	0.00	0.0	
16	18,378	0.00	0.0	
17	19,552	0.00	0.0	
18	20,465	0.00	0.0	

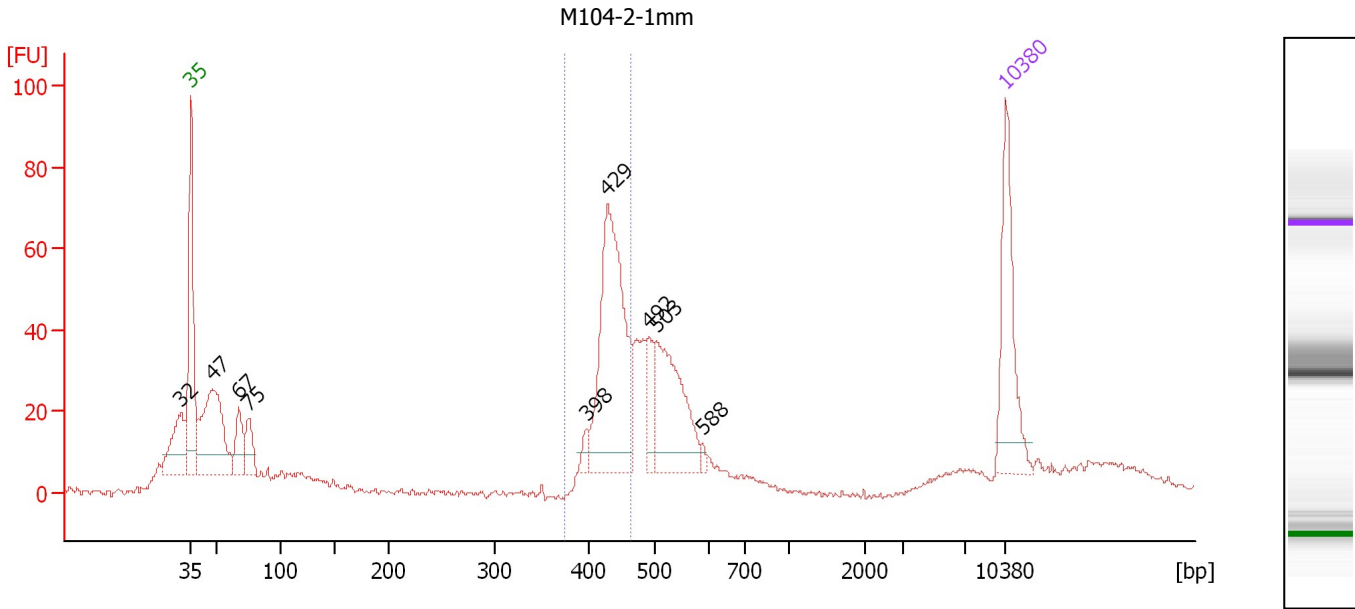
Region table for sample 1 : Kit-2-Endo-2

From [bp]	To [bp]	Average Size [bp]	Molarity [pmol/l]	Conc. [pg/μl]	Corr. Area	% of Total	Size distribution in CV [%]	Color
367	521	429	6,492.4	1,830.21	1,022.7	73	6.8	Blue

Assay Class: High Sensitivity DNA Assay
 Data Path: C:\...ents and Settings\Bioanalyzer\2012-08-29\2012-08-29_002.xad

Created: 8/29/2012 12:11:13 PM
 Modified: 8/29/2012 12:54:52 PM

Electropherogram Summary Continued ...



Overall Results for sample 2 : M104-2-1mm

Number of peaks found: 9 Corr. Area 1: 234.4
 Noise: 0.7

Peak table for sample 2 : M104-2-1mm

Peak	Size [bp]	Conc. [pg/μl]	Molarity [pmol/l]	Observations
1	32	0.00	0.0	
2	35	125.00	5,411.3	Lower Marker
3	47	172.83	5,551.8	
4	67	43.47	982.6	
5	75	34.89	705.5	
6	398	10.36	39.5	
7	429	230.45	814.2	
8	492	31.17	96.1	
9	503	116.62	351.5	
10	588	4.29	11.0	
11	10,380	75.00	10.9	Upper Marker

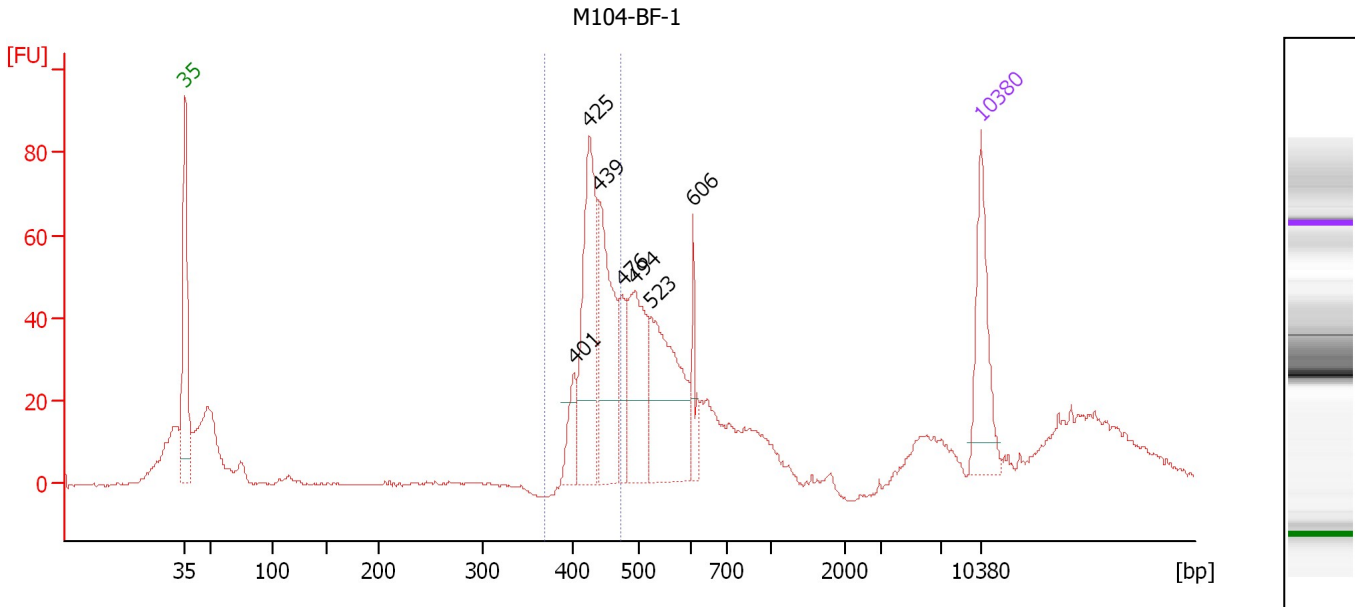
Region table for sample 2 : M104-2-1mm

From [bp]	To [bp]	Average Size [bp]	Molarity [pmol/l]	Conc. [pg/μl]	Corr. Area	% of Total	Size distribution in CV [%]	Color
374	464	432	912.8	260.24	234.4	26	4.1	Blue

Assay Class: High Sensitivity DNA Assay
 Data Path: C:\...ents and Settings\Bioanalyzer\2012-08-29\2012-08-29_002.xad

Created: 8/29/2012 12:11:13 PM
 Modified: 8/29/2012 12:54:52 PM

Electropherogram Summary Continued ...



Setpoint Deviations for sample 3 : M104-BF-1

Height Threshold [FU] : 20

Overall Results for sample 3 : M104-BF-1

Number of peaks found: 7 Corr. Area 1: 312.0
 Noise: 0.2

Peak table for sample 3 : M104-BF-1

Peak	Size [bp]	Conc. [pg/μl]	Molarity [pmol/l]	Observations
1	35	125.00	5,411.3	Lower Marker
2	401	37.53	141.9	
3	425	184.53	658.4	
4	439	153.07	527.8	
5	476	49.64	158.1	
6	494	126.87	389.3	
7	523	172.02	498.6	
8	606	34.01	85.1	
9	10,380	75.00	10.9	Upper Marker

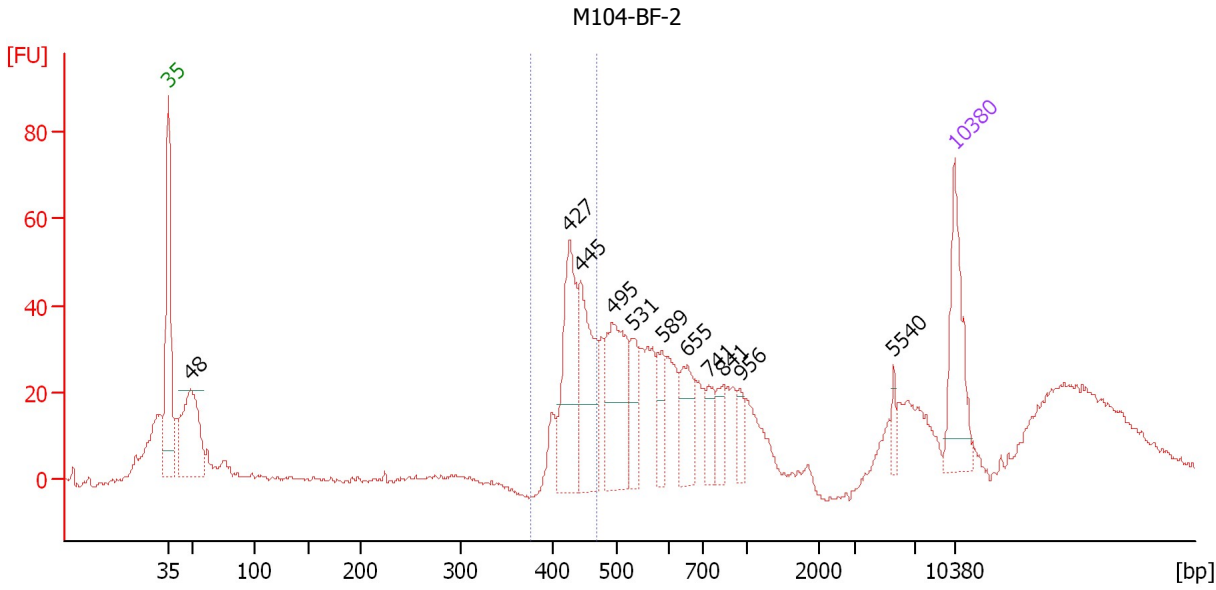
Region table for sample 3 : M104-BF-1

From [bp]	To [bp]	Average Size [bp]	Molarity [pmol/l]	Conc. [pg/μl]	Corr. Area	% of Total	Size distribution in CV [%]	Color
368	474	434	1,359.9	389.60	312.0	30	4.7	Blue

Assay Class: High Sensitivity DNA Assay
 Data Path: C:\...ents and Settings\Bioanalyzer\2012-08-29\2012-08-29_002.xad

Created: 8/29/2012 12:11:13 PM
 Modified: 8/29/2012 12:54:52 PM

Electropherogram Summary Continued ...



Setpoint Deviations for sample 4 : M104-BF-2

Height Threshold [FU] : 20

Overall Results for sample 4 : M104-BF-2

Number of peaks found: 11 Corr. Area 1: 183.7
 Noise: 0.6

Peak table for sample 4 : M104-BF-2

Peak	Size [bp]	Conc. [pg/μl]	Molarity [pmol/l]	Observations
1	35	125.00	5,411.3	Lower Marker
2	48	159.52	4,993.0	
3	427	138.96	493.1	
4	445	123.30	420.1	
5	495	130.34	399.3	
6	531	46.47	132.7	
7	589	38.59	99.3	
8	655	54.47	126.0	
9	741	31.61	64.6	
10	841	25.49	45.9	
11	956	17.56	27.8	
12	5,540	11.75	3.2	
13	10,380	75.00	10.9	Upper Marker

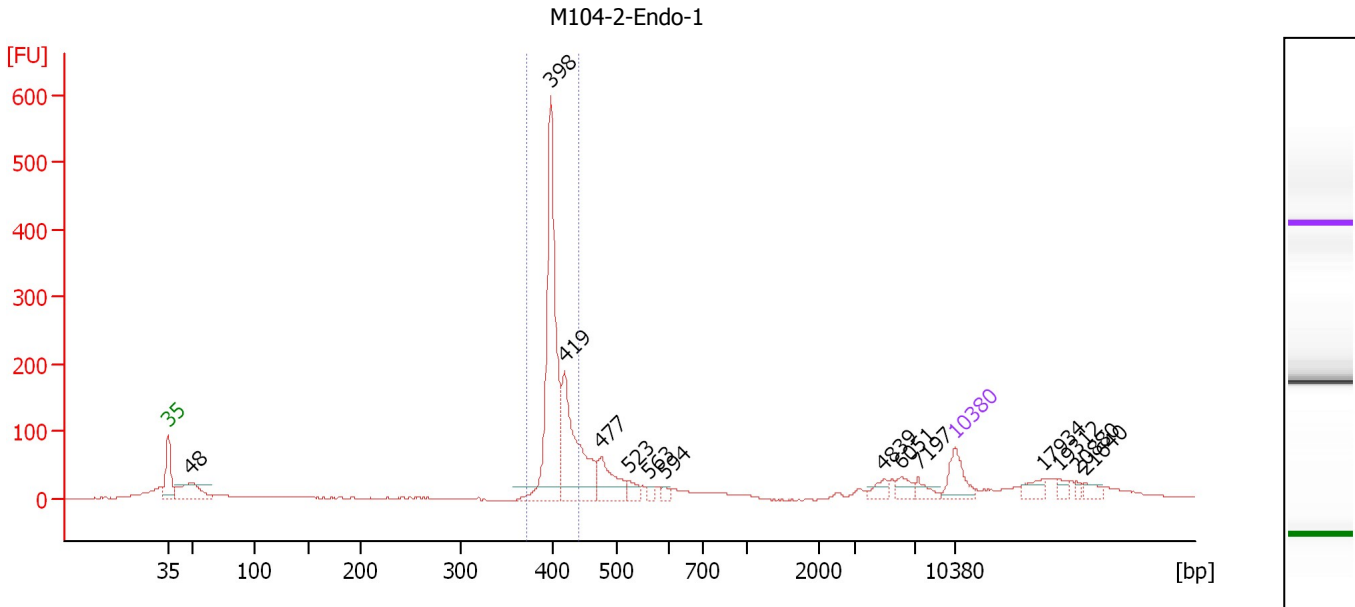
Region table for sample 4 : M104-BF-2

From [bp]	To [bp]	Average Size [bp]	Molarity [pmol/l]	Conc. [pg/μl]	Corr. Area	% of Total	Size distribution in CV [%]	Color
376	471	437	857.6	247.02	183.7	19	4.3	Blue

Assay Class: High Sensitivity DNA Assay
 Data Path: C:\...ents and Settings\Bioanalyzer\2012-08-29\2012-08-29_002.xad

Created: 8/29/2012 12:11:13 PM
 Modified: 8/29/2012 12:54:52 PM

Electropherogram Summary Continued ...



Setpoint Deviations for sample 5 : M104-2-Endo-1

Height Threshold [FU] : 20

Overall Results for sample 5 : M104-2-Endo-1

Number of peaks found: 14 Corr. Area 1: 945.9
 Noise: 0.6

Peak table for sample 5 : M104-2-Endo-1

Peak	Size [bp]	Conc. [pg/μl]	Molarity [pmol/l]	Observations
1	35	125.00	5,411.3	Lower Marker
2	48	172.50	5,408.3	
3	398	732.53	2,786.9	
4	419	414.03	1,497.0	
5	477	146.02	464.1	
6	523	37.65	109.0	
7	563	20.56	55.3	
8	594	16.21	41.3	
9	4,839	30.81	9.6	
10	6,051	36.68	9.2	
11	7,197	29.81	6.3	
12	10,380	75.00	10.9	Upper Marker
13	17,934	0.00	0.0	
14	19,312	0.00	0.0	
15	20,880	0.00	0.0	
16	21,640	0.00	0.0	

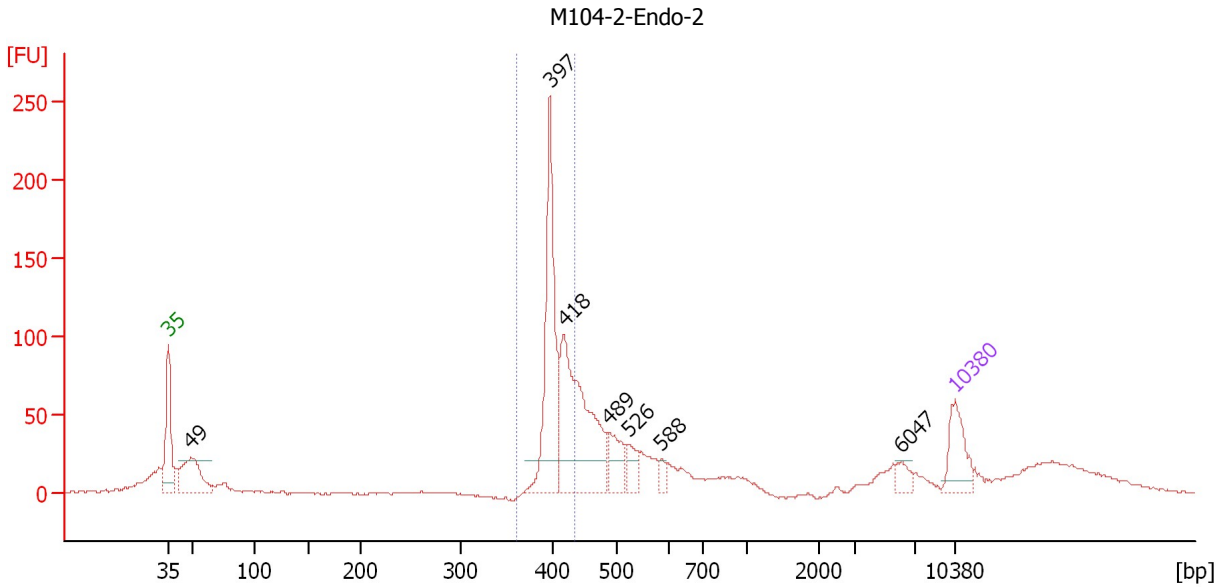
Region table for sample 5 : M104-2-Endo-1

From [bp]	To [bp]	Average Size [bp]	Molarity [pmol/l]	Conc. [pg/μl]	Corr. Area	% of Total	Size distribution in CV [%]	Color
372	441	406	3,596.6	963.51	945.9	47	3.2	Blue

Assay Class: High Sensitivity DNA Assay
 Data Path: C:\...ents and Settings\Bioanalyzer\2012-08-29\2012-08-29_002.xad

Created: 8/29/2012 12:11:13 PM
 Modified: 8/29/2012 12:54:52 PM

Electropherogram Summary Continued ...



Setpoint Deviations for sample 6 : M104-2-Endo-2

Height Threshold [FU] : 20

Overall Results for sample 6 : M104-2-Endo-2

Number of peaks found: 7 Corr. Area 1: 454.6
 Noise: 0.6

Peak table for sample 6 : M104-2-Endo-2

Peak	Size [bp]	Conc. [pg/μl]	Molarity [pmol/l]	Observations
1	35	125.00	5,411.3	Lower Marker
2	49	177.62	5,513.2	
3	397	381.37	1,453.7	
4	418	436.03	1,579.7	
5	489	83.29	258.2	
6	526	47.39	136.6	
7	588	17.31	44.6	
8	6,047	23.08	5.8	
9	10,380	75.00	10.9	Upper Marker

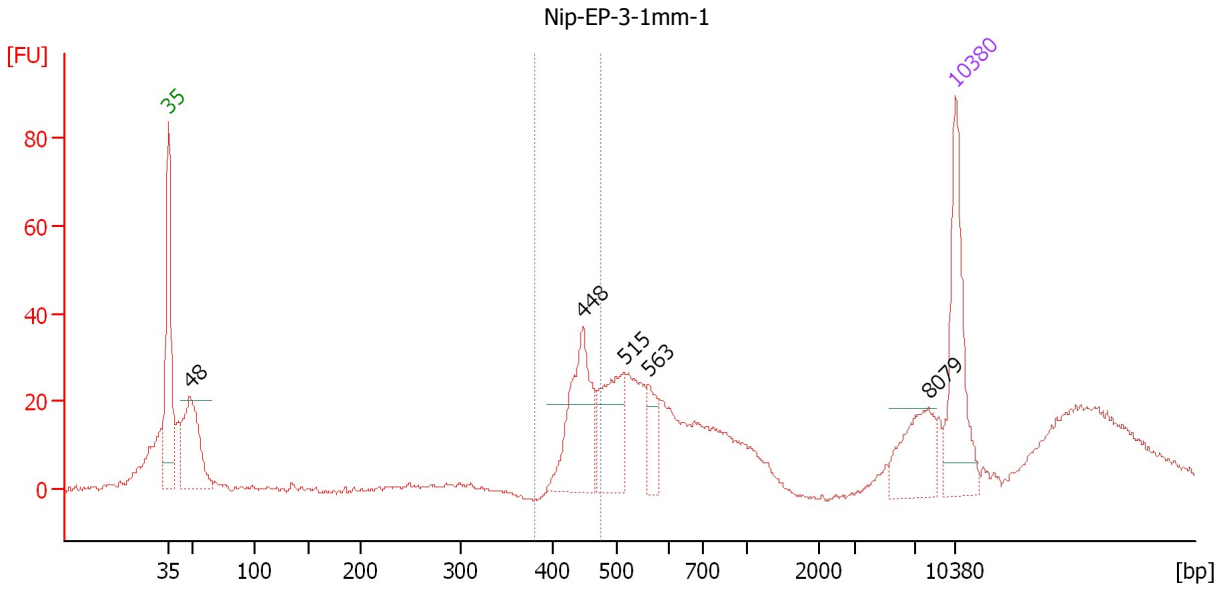
Region table for sample 6 : M104-2-Endo-2

From [bp]	To [bp]	Average Size [bp]	Molarity [pmol/l]	Conc. [pg/μl]	Corr. Area	% of Total	Size distribution in CV [%]	Color
362	436	406	2,118.4	567.05	454.6	33	3.3	Blue

Assay Class: High Sensitivity DNA Assay
 Data Path: C:\...ents and Settings\Bioanalyzer\2012-08-29\2012-08-29_002.xad

Created: 8/29/2012 12:11:13 PM
 Modified: 8/29/2012 12:54:52 PM

Electropherogram Summary Continued ...



Setpoint Deviations for sample 7 : Nip-EP-3-1mm-1

Height Threshold [FU] : 20

Overall Results for sample 7 : Nip-EP-3-1mm-1

Number of peaks found: 5 Corr. Area 1: 111.5
 Noise: 0.5

Peak table for sample 7 : Nip-EP-3-1mm-1

Peak	Size [bp]	Conc. [pg/μl]	Molarity [pmol/l]	Observations
1	35	125.00	5,411.3	Lower Marker
2	48	112.61	3,551.4	
3	448	101.57	343.9	
4	515	76.88	226.1	
5	563	30.42	81.9	
6	8,079	44.85	8.4	
7	10,380	75.00	10.9	Upper Marker

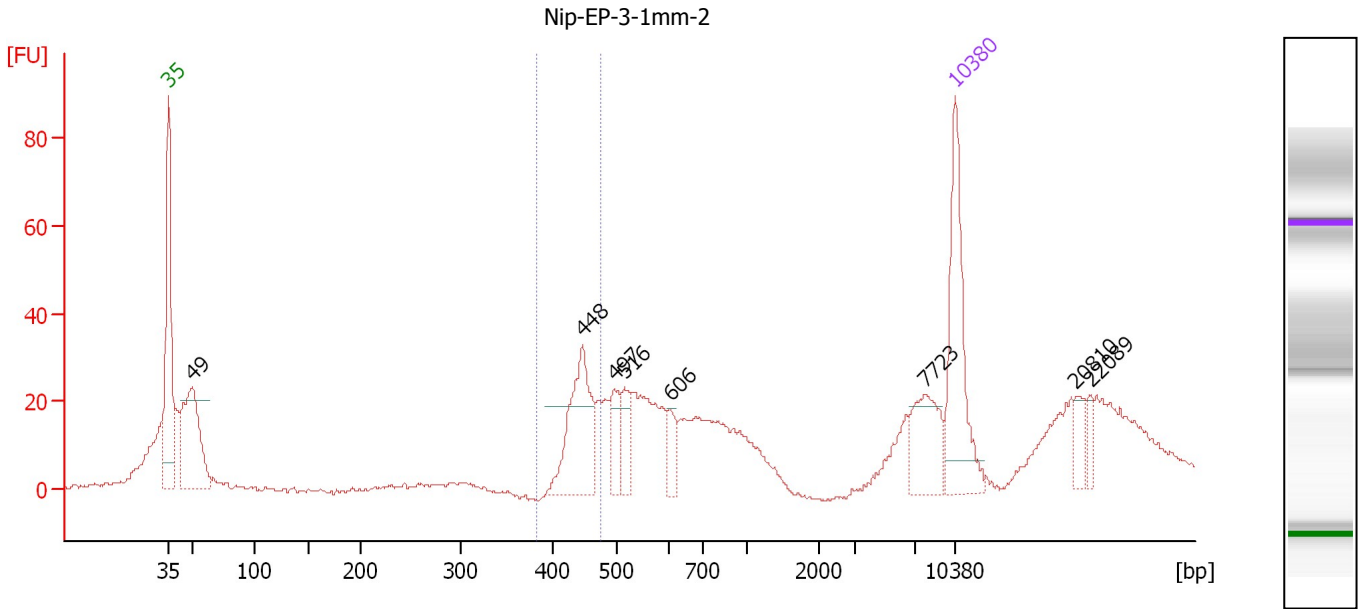
Region table for sample 7 : Nip-EP-3-1mm-1

From [bp]	To [bp]	Average Size [bp]	Molarity [pmol/l]	Conc. [pg/μl]	Corr. Area	% of Total	Size distribution in CV [%]	Color
381	474	444	372.0	108.99	111.5	13	3.9	Blue

Assay Class: High Sensitivity DNA Assay
 Data Path: C:\...ents and Settings\Bioanalyzer\2012-08-29\2012-08-29_002.xad

Created: 8/29/2012 12:11:13 PM
 Modified: 8/29/2012 12:54:52 PM

Electropherogram Summary Continued ...



Setpoint Deviations for sample 8 : Nip-EP-3-1mm-2

Height Threshold [FU] : 20

Overall Results for sample 8 : Nip-EP-3-1mm-2

Number of peaks found: 8 Corr. Area 1: 98.5
 Noise: 0.5

Peak table for sample 8 : Nip-EP-3-1mm-2

Peak	Size [bp]	Conc. [pg/µl]	Molarity [pmol/l]	Observations
1	35	125.00	5,411.3	Lower Marker
2	49	131.05	4,040.5	
3	448	88.95	300.7	
4	497	27.56	84.0	
5	516	24.53	72.0	
6	606	18.12	45.3	
7	7,723	41.35	8.1	
8	10,380	75.00	10.9	Upper Marker
9	20,810	0.00	0.0	
10	22,089	0.00	0.0	

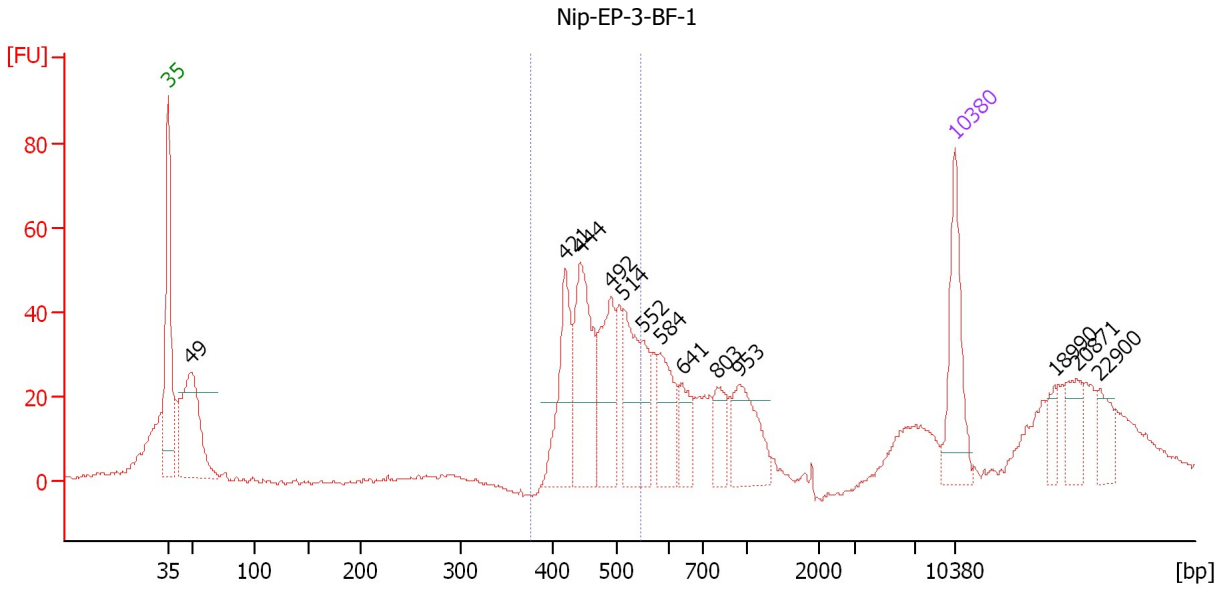
Region table for sample 8 : Nip-EP-3-1mm-2

From [bp]	To [bp]	Average Size [bp]	Molarity [pmol/l]	Conc. [pg/µl]	Corr. Area	% of Total	Size distribution in CV [%]	Color
383	476	445	321.3	94.40	98.5	11	3.8	Blue

Assay Class: High Sensitivity DNA Assay
 Data Path: C:\...ents and Settings\Bioanalyzer\2012-08-29\2012-08-29_002.xad

Created: 8/29/2012 12:11:13 PM
 Modified: 8/29/2012 12:54:52 PM

Electropherogram Summary Continued ...



Setpoint Deviations for sample 9 : Nip-EP-3-BF-1

Height Threshold [FU] : 20

Overall Results for sample 9 : Nip-EP-3-BF-1

Number of peaks found: 13 Corr. Area 1: 362.4
 Noise: 0.4

Peak table for sample 9 : Nip-EP-3-BF-1

Peak	Size [bp]	Conc. [pg/μl]	Molarity [pmol/l]	Observations
1	35	125.00	5,411.3	Lower Marker
2	49	191.63	5,982.5	
3	421	108.98	392.6	
4	444	149.69	511.0	
5	492	101.16	311.4	
6	514	85.47	252.1	
7	552	45.59	125.1	
8	584	67.53	175.2	
9	641	35.34	83.6	
10	803	36.99	69.8	
11	953	74.90	119.1	
12	10,380	75.00	10.9	Upper Marker
13	18,990	0.00	0.0	
14	20,871	0.00	0.0	
15	22,900	0.00	0.0	

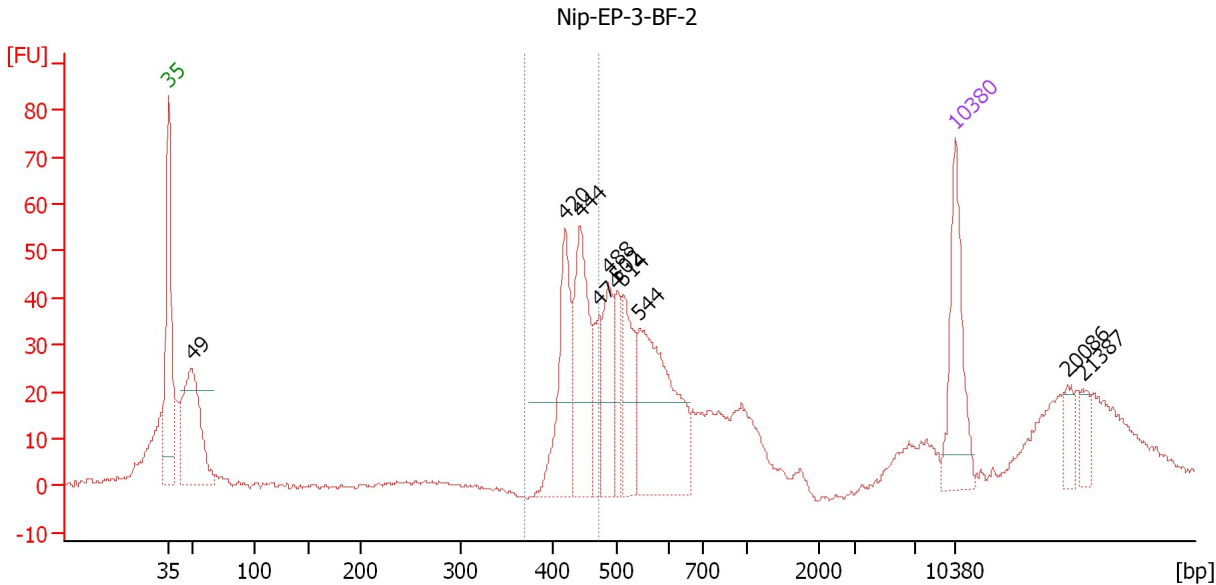
Region table for sample 9 : Nip-EP-3-BF-1

From [bp]	To [bp]	Average Size [bp]	Molarity [pmol/l]	Conc. [pg/μl]	Corr. Area	% of Total	Size distribution in CV [%]	Color
375	546	470	1,476.2	455.10	362.4	34	8.3	Blue

Assay Class: High Sensitivity DNA Assay
 Data Path: C:\...ents and Settings\Bioanalyzer\2012-08-29\2012-08-29_002.xad

Created: 8/29/2012 12:11:13 PM
 Modified: 8/29/2012 12:54:52 PM

Electropherogram Summary Continued ...



Setpoint Deviations for sample 10 : Nip-EP-3-BF-2

Height Threshold [FU] : 20

Overall Results for sample 10 : Nip-EP-3-BF-2

Number of peaks found: 10 Corr. Area 1: 199.7
 Noise: 0.4

Peak table for sample 10 : Nip-EP-3-BF-2

Peak	Size [bp]	Conc. [pg/μl]	Molarity [pmol/l]	Observations
1	35	125.00	5,411.3	Lower Marker
2	49	189.47	5,854.9	
3	420	117.62	424.1	
4	444	137.17	468.4	
5	474	42.57	136.2	
6	488	71.30	221.3	
7	502	44.30	133.7	
8	514	74.62	219.8	
9	544	187.67	522.2	
10	10,380	75.00	10.9	Upper Marker
11	20,086	0.00	0.0	
12	21,387	0.00	0.0	

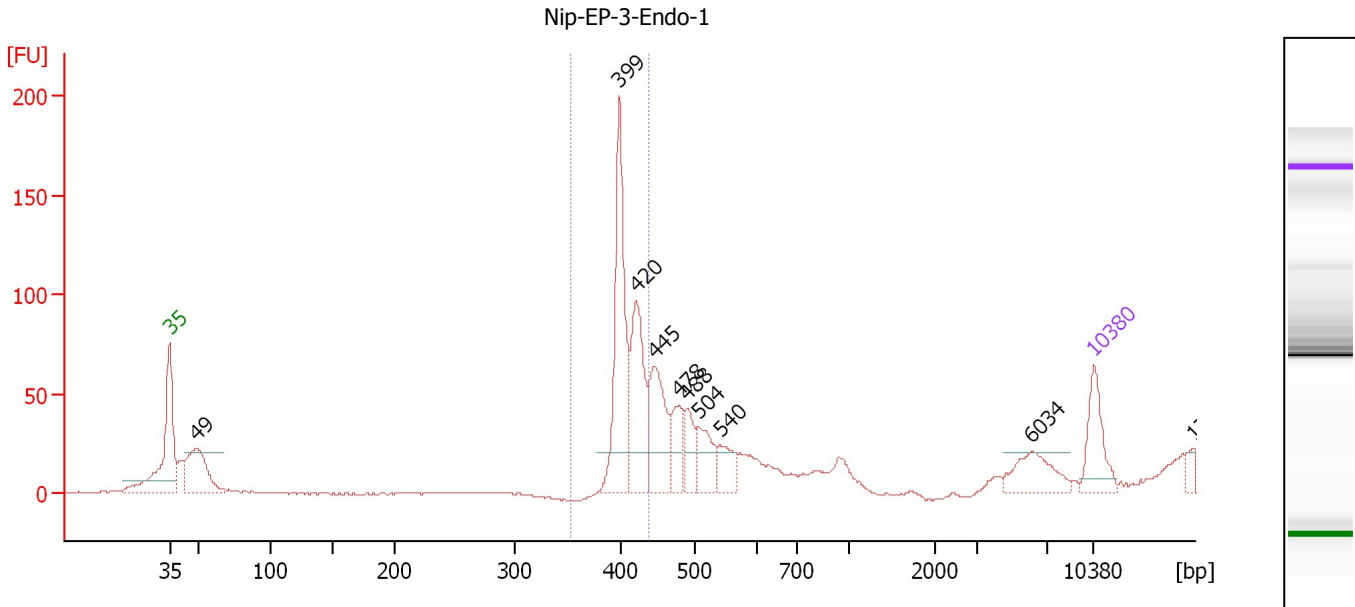
Region table for sample 10 : Nip-EP-3-BF-2

From [bp]	To [bp]	Average Size [bp]	Molarity [pmol/l]	Conc. [pg/μl]	Corr. Area	% of Total	Size distribution in CV [%]	Color
370	472	437	890.4	256.87	199.7	20	4.3	Blue

Assay Class: High Sensitivity DNA Assay
 Data Path: C:\...ents and Settings\Bioanalyzer\2012-08-29\2012-08-29_002.xad

Created: 8/29/2012 12:11:13 PM
 Modified: 8/29/2012 12:54:52 PM

Electropherogram Summary Continued ...



Setpoint Deviations for sample 11 : Nip-EP-3-Endo-1

Height Threshold [FU] : 20

Overall Results for sample 11 : Nip-EP-3-Endo-1

Number of peaks found: 14 Corr. Area 1: 352.7
 Noise: 0.5

Peak table for sample 11 : Nip-EP-3-Endo-1

Peak	Size [bp]	Conc. [pg/µl]	Molarity [pmol/l]	Observations
1	35	125.00	5,411.3	Lower Marker
2	49	188.56	5,859.0	
3	399	320.77	1,218.7	
4	420	200.40	722.6	
5	445	161.39	549.7	
6	478	77.58	246.1	
7	488	59.32	184.3	
8	504	74.04	222.6	
9	540	52.98	148.7	
10	6,034	73.54	18.5	
11	10,380	75.00	10.9	Upper Marker
12	17,728	0.00	0.0	
13	19,036	0.00	0.0	
14	20,496	0.00	0.0	
15	21,452	0.00	0.0	
16	22,912	0.00	0.0	

Region table for sample 11 : Nip-EP-3-Endo-1

From [bp]	To [bp]	Average Size [bp]	Molarity [pmol/l]	Conc. [pg/µl]	Corr. Area	% of Total	Size distribution in CV [%]	Color
353	437	409	1,911.3	515.11	352.7	29	3.1	Blue

Assay Class: High Sensitivity DNA Assay
Data Path: C:\...ents and Settings\Bioanalyzer\2012-08-29\2012-08-29_002.xad

Created: 8/29/2012 12:11:13 PM
Modified: 8/29/2012 12:54:52 PM

Gel Image

