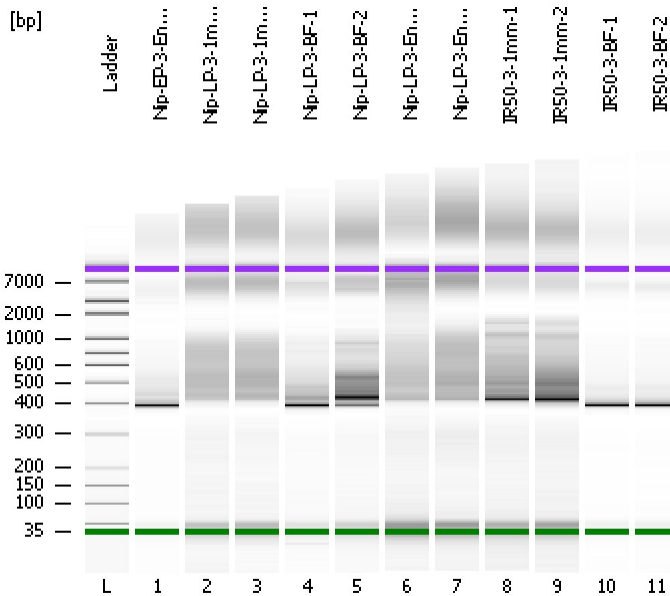


Assay Class: High Sensitivity DNA Assay  
Data Path: C:\...ents and Settings\Bioanalyzer\2012-08-29\2012-08-29\_003.xad

Created: 8/29/2012 12:56:39 PM  
Modified: 8/29/2012 1:39:10 PM

**Electrophoresis File Run Summary**



Instrument Information:

Instrument Name: DE13701086      Firmware: C.01.069  
Serial#: DE13701086      Type: G2938B

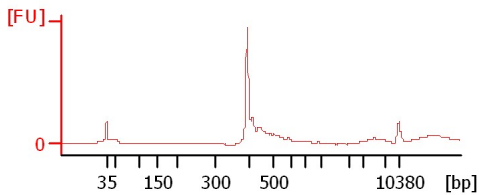
Assay Information:

Assay Origin Path: C:\Program Files\Agilent\2100 bioanalyzer\2100 expert\assays\dsDNA\High Sensitivity DNA.xsy  
Assay Class: High Sensitivity DNA Assay  
Version: 1.03  
Assay Comments: Copyright © 2003-2010 Agilent Technologies

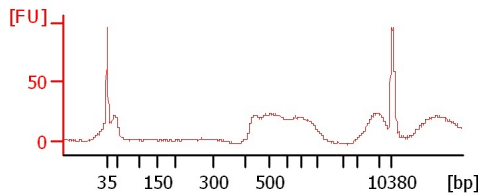
Chip Information:

Chip Lot #:  
Reagent Kit Lot #:  
Chip Comments:

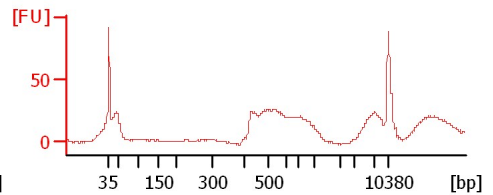
**Nip-EP-3-Endo-2**



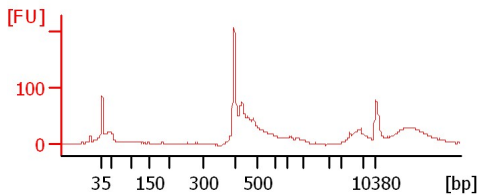
**Nip-LP-3-1mm-1**



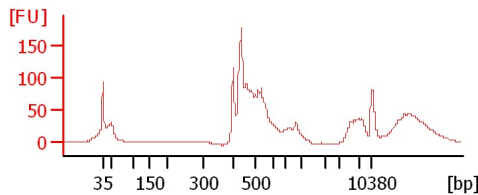
**Nip-LP-3-1mm-2**



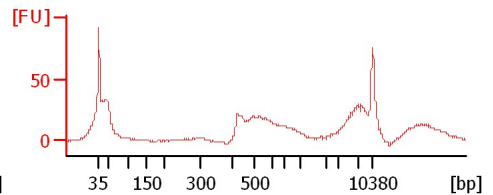
**Nip-LP-3-BF-1**



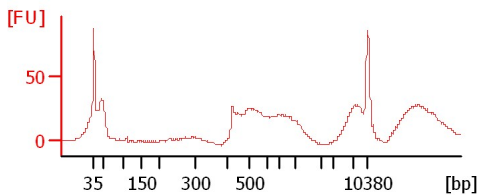
**Nip-LP-3-BF-2**



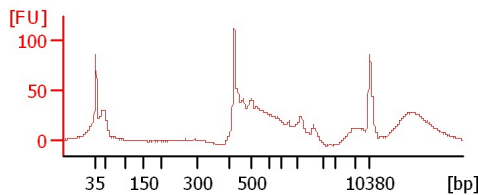
**Nip-LP-3-Endo-1**



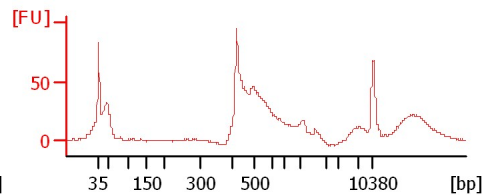
**Nip-LP-3-Endo-2**



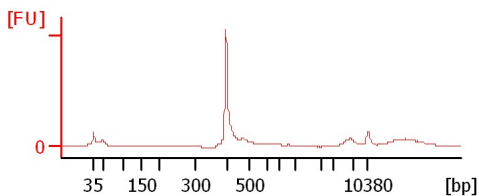
**IR50-3-1mm-1**



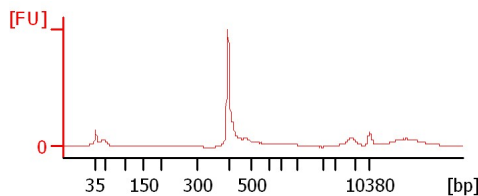
**IR50-3-1mm-2**



**IR50-3-BF-1**



**IR50-3-BF-2**



Assay Class: High Sensitivity DNA Assay  
 Data Path: C:\...ents and Settings\Bioanalyzer\2012-08-29\2012-08-29\_003.xad

Created: 8/29/2012 12:56:39 PM  
 Modified: 8/29/2012 1:39:10 PM

**Electrophoresis File Run Summary (Chip Summary)**

Sample Name	Sample Comment	Rest. Digest	Status	Observation	Result Label	Result Color
Nip-EP-3-Endo-2		<input type="checkbox"/>	✓			
Nip-LP-3-1mm-1		<input type="checkbox"/>	✓			
Nip-LP-3-1mm-2		<input type="checkbox"/>	✓			
Nip-LP-3-BF-1		<input type="checkbox"/>	✓			
Nip-LP-3-BF-2		<input type="checkbox"/>	✓			
Nip-LP-3-Endo-1		<input type="checkbox"/>	✓			
Nip-LP-3-Endo-2		<input type="checkbox"/>	✓			
IR50-3-1mm-1		<input type="checkbox"/>	✓			
IR50-3-1mm-2		<input type="checkbox"/>	✓			
IR50-3-BF-1		<input type="checkbox"/>	✓			
IR50-3-BF-2		<input type="checkbox"/>	✓			
Ladder		<input type="checkbox"/>	✓			

**Chip Lot #**

**Reagent Kit Lot #**

**Chip Comments :**

Assay Class: High Sensitivity DNA Assay  
Data Path: C:\...ents and Settings\Bioanalyzer\2012-08-29\2012-08-29\_003.xad

Created: 8/29/2012 12:56:39 PM  
Modified: 8/29/2012 1:39:10 PM

**Electrophoresis Assay Details**

**General Analysis Settings**

Number of Available Sample and Ladder Wells (Max.) : 12  
Minimum Visible Range [s] : 32  
Maximum Visible Range [s] : 138  
Start Analysis Time Range [s] : 33  
End Analysis Time Range [s] : 137.5  
Ladder Concentration [pg/ $\mu$ l] : 1950  
Uses Standard Area for Ladder Fragments  
Lower Marker Concentration [pg/ $\mu$ l] : 125  
Upper Marker Concentration [pg/ $\mu$ l] : 75  
Used Upper Marker for Quantitation  
Standard Curve Fit is Point to Point  
Show Data Aligned to Lower and Upper Marker

**Integrator Settings**

Integration Start Time [s] : 33.05  
Integration End Time [s] : 137  
Slope Threshold : 0.8  
Height Threshold [FU] : 5  
Area Threshold : 0.1  
Width Threshold [s] : 0.6  
Baseline Plateau [s] : 0.5

**Filter Settings**

Filter Width [s] : 0.5  
Polynomial Order : 4

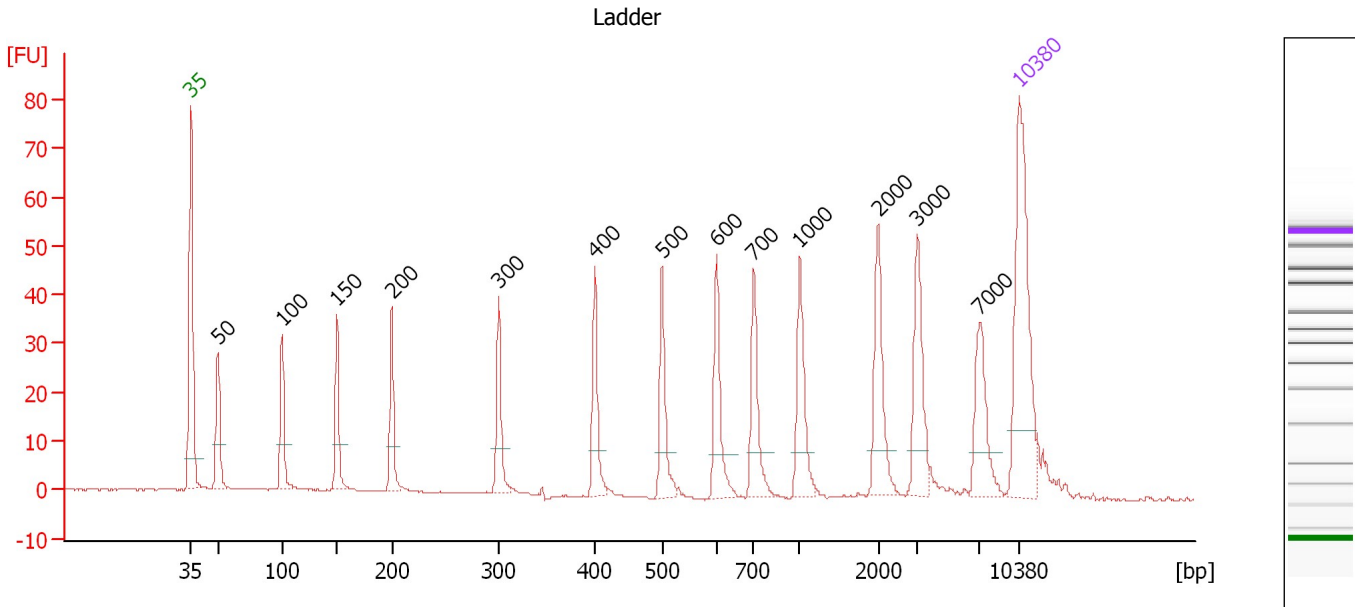
**Ladder**

Ladder Peak	Size	Area
1	35	160
2	50	210
3	100	208
4	150	221
5	200	242
6	300	270
7	400	305
8	500	306
9	600	336
10	700	321
11	1000	366
12	2000	413
13	3000	411
14	7000	400
15	10380	214

Assay Class: High Sensitivity DNA Assay  
 Data Path: C:\...ents and Settings\Bioanalyzer\2012-08-29\2012-08-29\_003.xad

Created: 8/29/2012 12:56:39 PM  
 Modified: 8/29/2012 1:39:10 PM

**Electropherogram Summary**



**Overall Results for Ladder**

Noise: 0.1

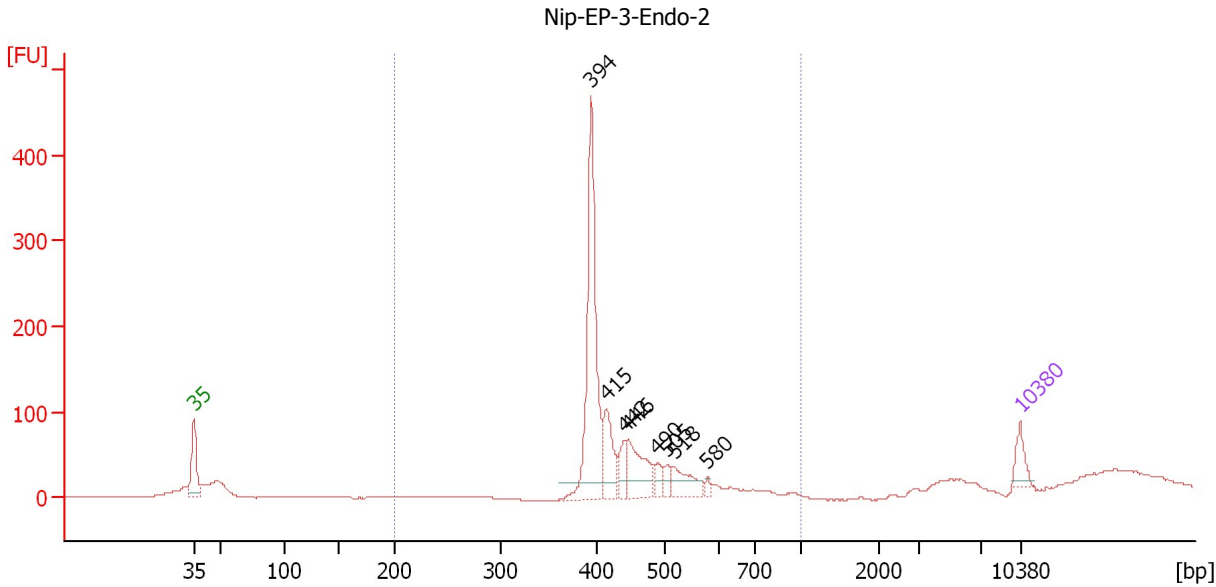
**Peak table for Ladder**

Peak	Size [bp]	Conc. [pg/μl]	Molarity [pmol/l]	Observations
1	35	125.00	5,411.3	Lower Marker
2	50	150.00	4,545.5	Ladder Peak
3	100	150.00	2,272.7	Ladder Peak
4	150	150.00	1,515.2	Ladder Peak
5	200	150.00	1,136.4	Ladder Peak
6	300	150.00	757.6	Ladder Peak
7	400	150.00	568.2	Ladder Peak
8	500	150.00	454.5	Ladder Peak
9	600	150.00	378.8	Ladder Peak
10	700	150.00	324.7	Ladder Peak
11	1,000	150.00	227.3	Ladder Peak
12	2,000	150.00	113.6	Ladder Peak
13	3,000	150.00	75.8	Ladder Peak
14	7,000	150.00	32.5	Ladder Peak
15	10,380	75.00	10.9	Upper Marker

Assay Class: High Sensitivity DNA Assay  
 Data Path: C:\...ents and Settings\Bioanalyzer\2012-08-29\2012-08-29\_003.xad

Created: 8/29/2012 12:56:39 PM  
 Modified: 8/29/2012 1:39:10 PM

**Electropherogram Summary Continued ...**



**Setpoint Deviations for sample 1 : Nip-EP-3-Endo-2**

Height Threshold [FU] : 20

**Overall Results for sample 1 : Nip-EP-3-Endo-2**

Number of peaks found: 8                      Corr. Area 1: 928.0  
 Noise: 0.2

**Peak table for sample 1 : Nip-EP-3-Endo-2**

Peak	Size [bp]	Conc. [pg/μl]	Molarity [pmol/l]	Observations
1	35	125.00	5,411.3	Lower Marker
2	394	987.10	3,794.6	
3	415	237.08	866.2	
4	442	105.25	361.0	
5	446	278.18	944.0	
6	490	66.89	206.7	
7	505	52.45	157.5	
8	518	145.60	425.6	
9	580	21.93	57.3	
10	10,380	75.00	10.9	Upper Marker

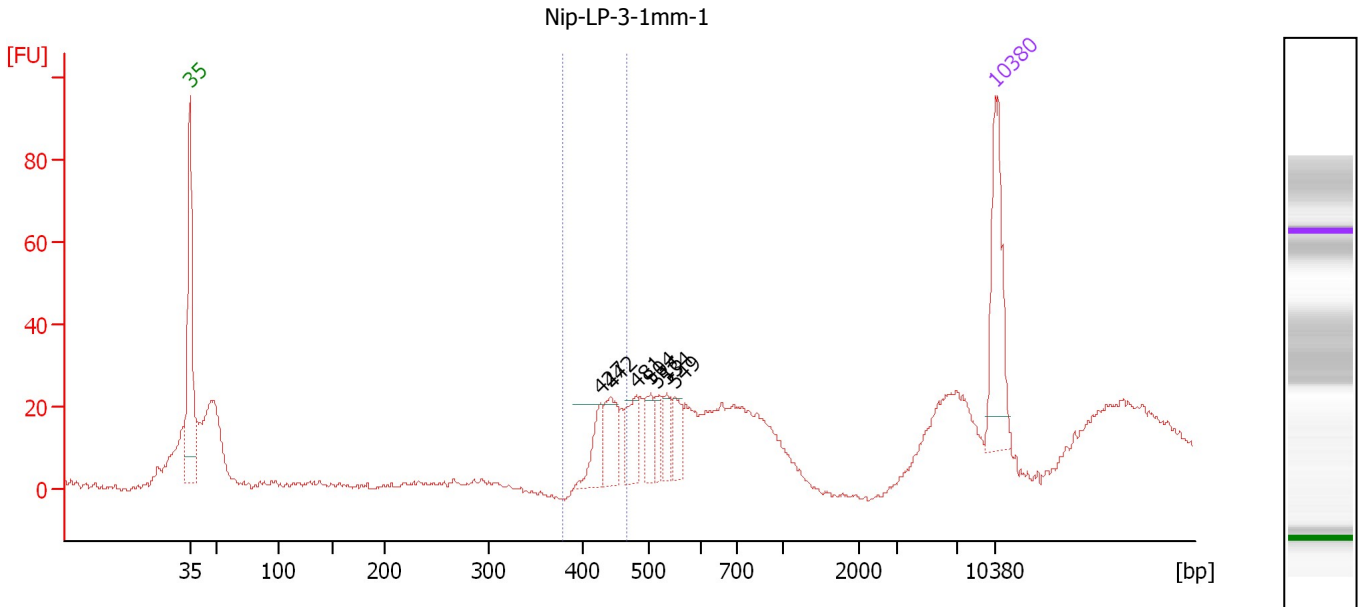
**Region table for sample 1 : Nip-EP-3-Endo-2**

From [bp]	To [bp]	Average Size [bp]	Molarity [pmol/l]	Conc. [pg/μl]	Corr. Area	% of Total	Size distribution in CV [%]	Color
200	1,000	430	6,003.6	1,680.75	928.0	79	11.7	Blue

Assay Class: High Sensitivity DNA Assay  
 Data Path: C:\...ents and Settings\Bioanalyzer\2012-08-29\2012-08-29\_003.xad

Created: 8/29/2012 12:56:39 PM  
 Modified: 8/29/2012 1:39:10 PM

**Electropherogram Summary Continued ...**



**Setpoint Deviations for sample 2 : Nip-LP-3-1mm-1**

Height Threshold [FU] : 20

**Overall Results for sample 2 : Nip-LP-3-1mm-1**

Number of peaks found: 7                      Corr. Area 1: 50.8  
 Noise: 0.7

**Peak table for sample 2 : Nip-LP-3-1mm-1**

Peak	Size [bp]	Conc. [pg/μl]	Molarity [pmol/l]	Observations
1	35	125.00	5,411.3	Lower Marker
2	427	33.79	119.8	
3	442	46.57	159.7	
4	481	39.82	125.4	
5	504	26.29	79.1	
6	516	20.00	58.7	
7	534	19.30	54.8	
8	549	22.75	62.7	
9	10,380	75.00	10.9	Upper Marker

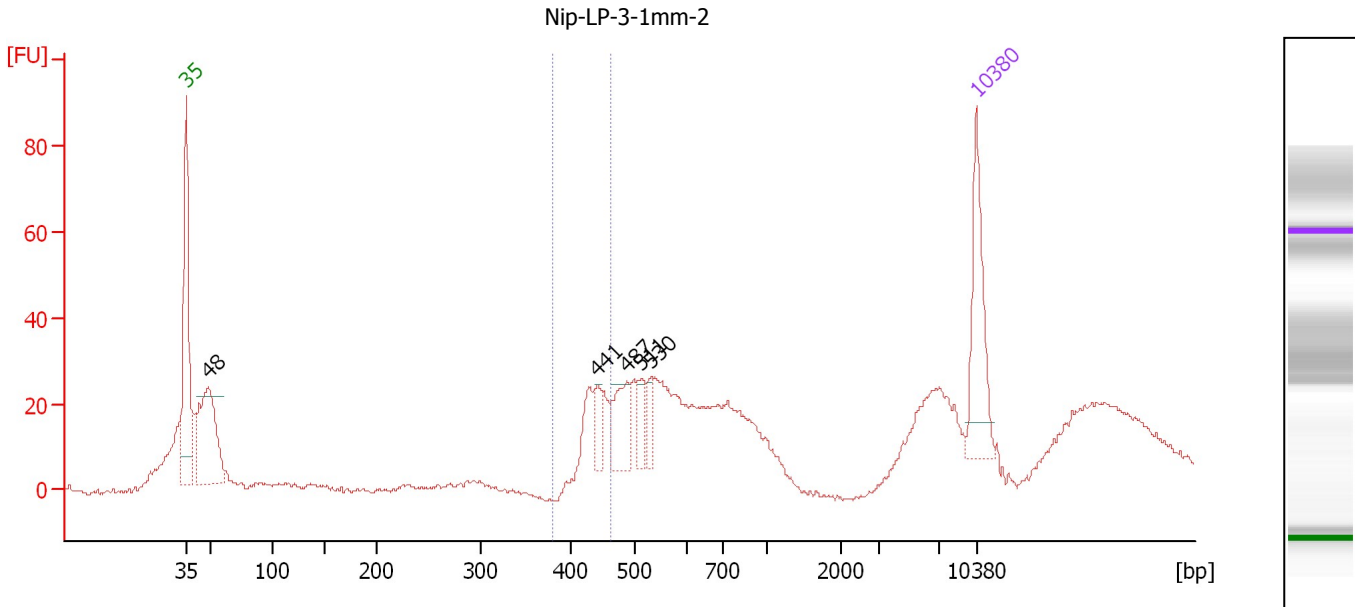
**Region table for sample 2 : Nip-LP-3-1mm-1**

From [bp]	To [bp]	Average Size [bp]	Molarity [pmol/l]	Conc. [pg/μl]	Corr. Area	% of Total	Size distribution in CV [%]	Color
378	466	441	214.3	62.30	50.8	11	3.2	Blue

Assay Class: High Sensitivity DNA Assay  
 Data Path: C:\...ents and Settings\Bioanalyzer\2012-08-29\2012-08-29\_003.xad

Created: 8/29/2012 12:56:39 PM  
 Modified: 8/29/2012 1:39:10 PM

**Electropherogram Summary Continued ...**



**Setpoint Deviations for sample 3 : Nip-LP-3-1mm-2**

Height Threshold [FU] : 20

**Overall Results for sample 3 : Nip-LP-3-1mm-2**

Number of peaks found: 5                      Corr. Area 1: 62.8  
 Noise: 0.6

**Peak table for sample 3 : Nip-LP-3-1mm-2**

Peak	Size [bp]	Conc. [pg/μl]	Molarity [pmol/l]	Observations
1	35	125.00	5,411.3	Lower Marker
2	48	180.72	5,681.6	
3	441	23.78	81.7	
4	487	51.71	161.0	
5	511	25.45	75.5	
6	530	21.90	62.7	
7	10,380	75.00	10.9	Upper Marker

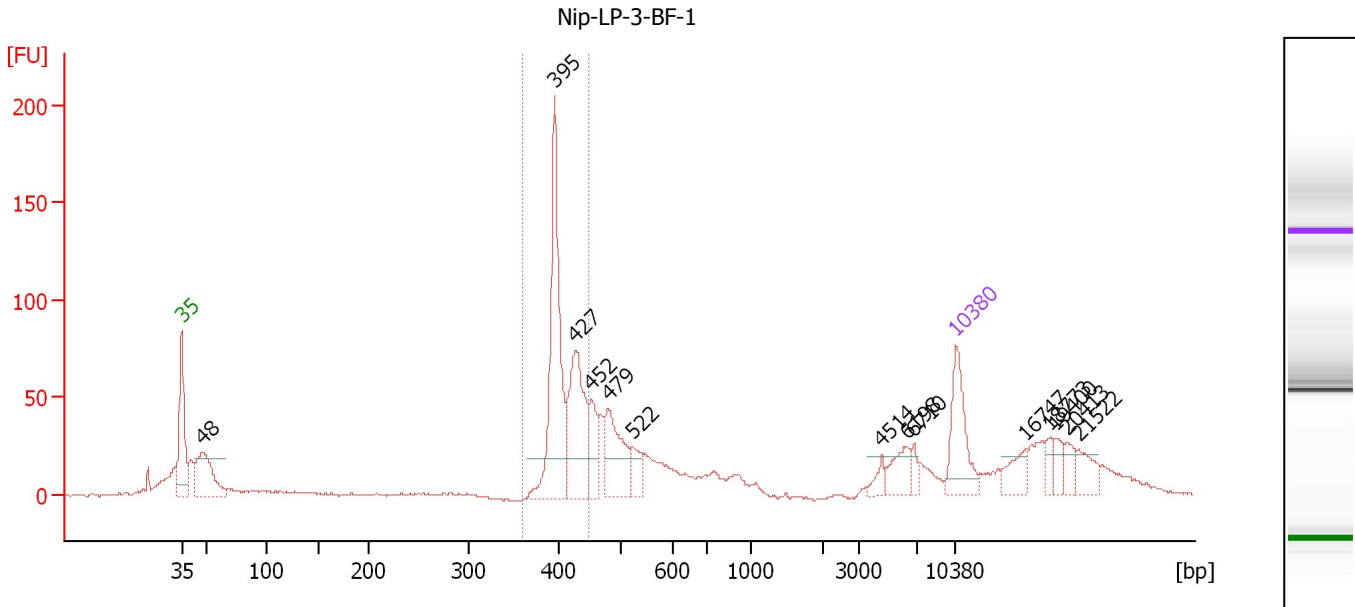
**Region table for sample 3 : Nip-LP-3-1mm-2**

From [bp]	To [bp]	Average Size [bp]	Molarity [pmol/l]	Conc. [pg/μl]	Corr. Area	% of Total	Size distribution in CV [%]	Color
379	462	438	292.0	84.42	62.8	10	3.0	Blue

Assay Class: High Sensitivity DNA Assay  
 Data Path: C:\...ents and Settings\Bioanalyzer\2012-08-29\2012-08-29\_003.xad

Created: 8/29/2012 12:56:39 PM  
 Modified: 8/29/2012 1:39:10 PM

**Electropherogram Summary Continued ...**



**Setpoint Deviations for sample 4 : Nip-LP-3-BF-1**

Height Threshold [FU] : 20

**Overall Results for sample 4 : Nip-LP-3-BF-1**

Number of peaks found: 14      Corr. Area 1: 401.3  
 Noise: 0.7

**Peak table for sample 4 : Nip-LP-3-BF-1**

Peak	Size [bp]	Conc. [pg/µl]	Molarity [pmol/l]	Observations
1	35	125.00	5,411.3	Lower Marker
2	48	146.29	4,632.8	
3	395	279.23	1,070.9	
4	427	169.27	600.7	
5	452	56.08	187.8	
6	479	107.03	338.7	
7	522	32.87	95.4	
8	4,515	13.92	4.7	
9	6,198	35.35	8.6	
10	6,710	11.56	2.6	
11	10,380	75.00	10.9	Upper Marker
12	16,747	0.00	0.0	
13	18,773	0.00	0.0	
14	19,400	0.00	0.0	
15	20,413	0.00	0.0	
16	21,522	0.00	0.0	

**Region table for sample 4 : Nip-LP-3-BF-1**

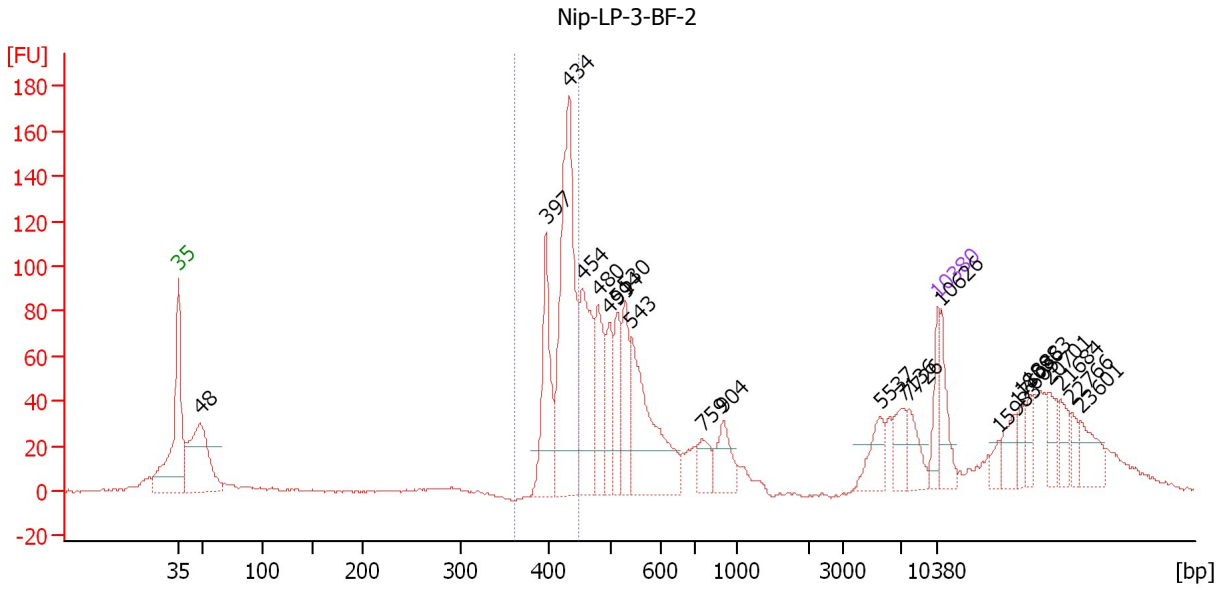
From [bp]	To [bp]	Average Size [bp]	Molarity [pmol/l]	Conc. [pg/µl]	Corr. Area	% of Total	Size distribution in CV [%]	Color
360	447	409	1,609.8	433.50	401.3	32	4.3	Blue



Assay Class: High Sensitivity DNA Assay  
 Data Path: C:\...ents and Settings\Bioanalyzer\2012-08-29\2012-08-29\_003.xad

Created: 8/29/2012 12:56:39 PM  
 Modified: 8/29/2012 1:39:10 PM

**Electropherogram Summary Continued ...**



**Setpoint Deviations for sample 5 : Nip-LP-3-BF-2**

Height Threshold [FU] : 20

**Overall Results for sample 5 : Nip-LP-3-BF-2**

Number of peaks found: 23                      Corr. Area 1: 456.0  
 Noise: 0.5

**Peak table for sample 5 : Nip-LP-3-BF-2**

Peak	Size [bp]	Conc. [pg/μl]	Molarity [pmol/l]	Observations
1	35	125.00	5,411.3	Lower Marker
2	48	651.29	20,382.3	
3	397	394.83	1,507.2	
4	434	992.97	3,469.4	
5	454	451.62	1,505.8	
6	480	294.63	929.3	
7	499	182.87	555.8	
8	514	187.96	553.8	
9	530	224.11	640.3	
10	543	559.50	1,560.8	
11	759	99.29	198.1	
12	904	141.95	237.9	
13	5,537	109.55	30.0	
14	7,136	95.71	20.3	
15	7,726	89.85	17.6	
16	10,380	75.00	10.9	Upper Marker
17	10,626	0.00	0.0	
18	15,983	0.00	0.0	
19	17,605	0.00	0.0	
20	18,096	0.00	0.0	
21	18,883	0.00	0.0	
22	20,701	0.00	0.0	

Assay Class: High Sensitivity DNA Assay  
Data Path: C:\...ents and Settings\Bioanalyzer\2012-08-29\2012-08-29\_003.xad

Created: 8/29/2012 12:56:39 PM  
Modified: 8/29/2012 1:39:10 PM

**Electropherogram Summary Continued ...****... Peak table for sample 5 : Nip-LP-3-BF-2**

Peak	Size [bp]	Conc. [pg/μl]	Molarity [pmol/l]	Observations
23	21,684	0.00	0.0	
24	22,766	0.00	0.0	
25	23,601	0.00	0.0	

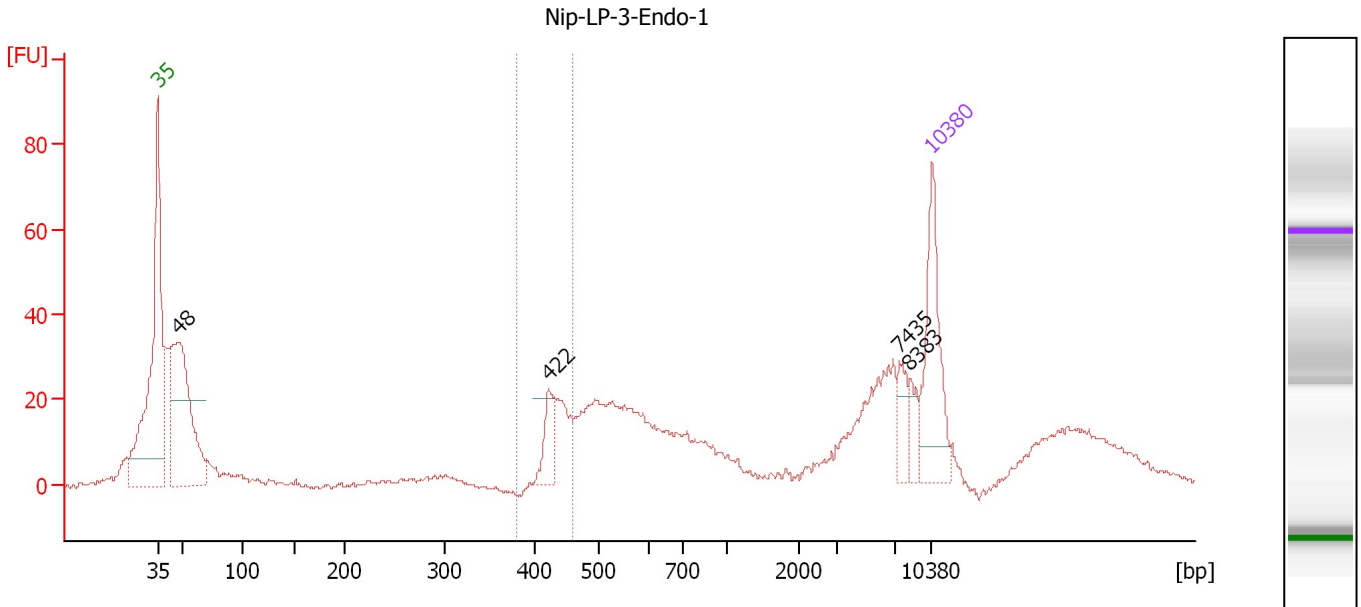
**Region table for sample 5 : Nip-LP-3-BF-2**

From [bp]	To [bp]	Average Size [bp]	Molarity [pmol/l]	Conc. [pg/μl]	Corr. Area	% of Total	Size distribution in CV [%]	Color
362	450	422	4,850.8	1,348.39	456.0	23	4.0	

Assay Class: High Sensitivity DNA Assay  
 Data Path: C:\...ents and Settings\Bioanalyzer\2012-08-29\2012-08-29\_003.xad

Created: 8/29/2012 12:56:39 PM  
 Modified: 8/29/2012 1:39:10 PM

**Electropherogram Summary Continued ...**



**Setpoint Deviations for sample 6 : Nip-LP-3-Endo-1**

Height Threshold [FU] : 20

**Overall Results for sample 6 : Nip-LP-3-Endo-1**

Number of peaks found: 4                      Corr. Area 1: 63.4  
 Noise: 0.6

**Peak table for sample 6 : Nip-LP-3-Endo-1**

Peak	Size [bp]	Conc. [pg/μl]	Molarity [pmol/l]	Observations
1	35	125.00	5,411.3	Lower Marker
2	48	262.86	8,304.3	
3	422	32.86	118.1	
4	7,435	22.54	4.6	
5	8,383	15.12	2.7	
6	10,380	75.00	10.9	Upper Marker

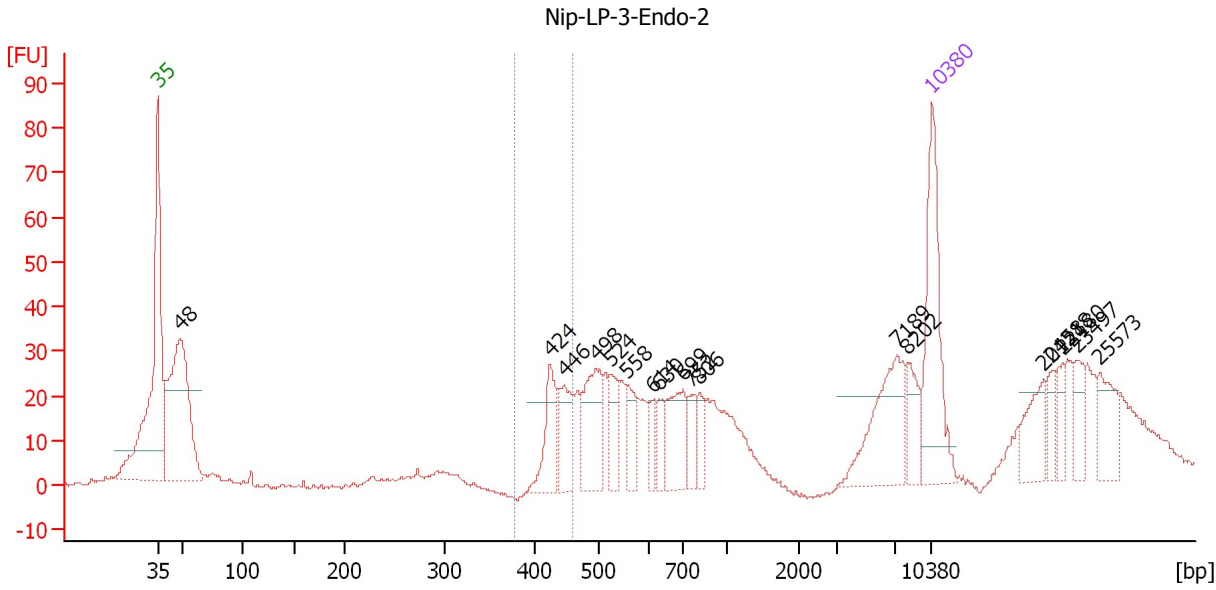
**Region table for sample 6 : Nip-LP-3-Endo-1**

From [bp]	To [bp]	Average Size [bp]	Molarity [pmol/l]	Conc. [pg/μl]	Corr. Area	% of Total	Size distribution in CV [%]	Color
380	460	435	250.4	71.86	63.4	8	3.2	Blue

Assay Class: High Sensitivity DNA Assay  
 Data Path: C:\...ents and Settings\Bioanalyzer\2012-08-29\2012-08-29\_003.xad

Created: 8/29/2012 12:56:39 PM  
 Modified: 8/29/2012 1:39:10 PM

**Electropherogram Summary Continued ...**



**Setpoint Deviations for sample 7 : Nip-LP-3-Endo-2**

Height Threshold [FU] : 20

**Overall Results for sample 7 : Nip-LP-3-Endo-2**

Number of peaks found: 18                      Corr. Area 1: 74.7  
 Noise: 0.3

**Peak table for sample 7 : Nip-LP-3-Endo-2**


Peak	Size [bp]	Conc. [pg/μl]	Molarity [pmol/l]	Observations
1	35	125.00	5,411.3	Lower Marker
2	48	229.44	7,220.3	
3	424	45.37	162.0	
4	446	40.51	137.7	
5	498	62.63	190.7	
6	524	29.53	85.3	
7	558	24.46	66.5	
8	614	15.30	37.8	
9	630	15.37	37.0	
10	699	45.04	97.7	
11	752	17.91	36.1	
12	806	16.11	30.3	
13	7,189	65.12	13.7	
14	8,202	21.67	4.0	
15	10,380	75.00	10.9	Upper Marker
16	20,458	0.00	0.0	
17	21,218	0.00	0.0	
18	22,180	0.00	0.0	
19	23,497	0.00	0.0	
20	25,573	0.00	0.0	

Assay Class: High Sensitivity DNA Assay  
Data Path: C:\...ents and Settings\Bioanalyzer\2012-08-29\2012-08-29\_003.xad

Created: 8/29/2012 12:56:39 PM  
Modified: 8/29/2012 1:39:10 PM

**Electropherogram Summary Continued ...**

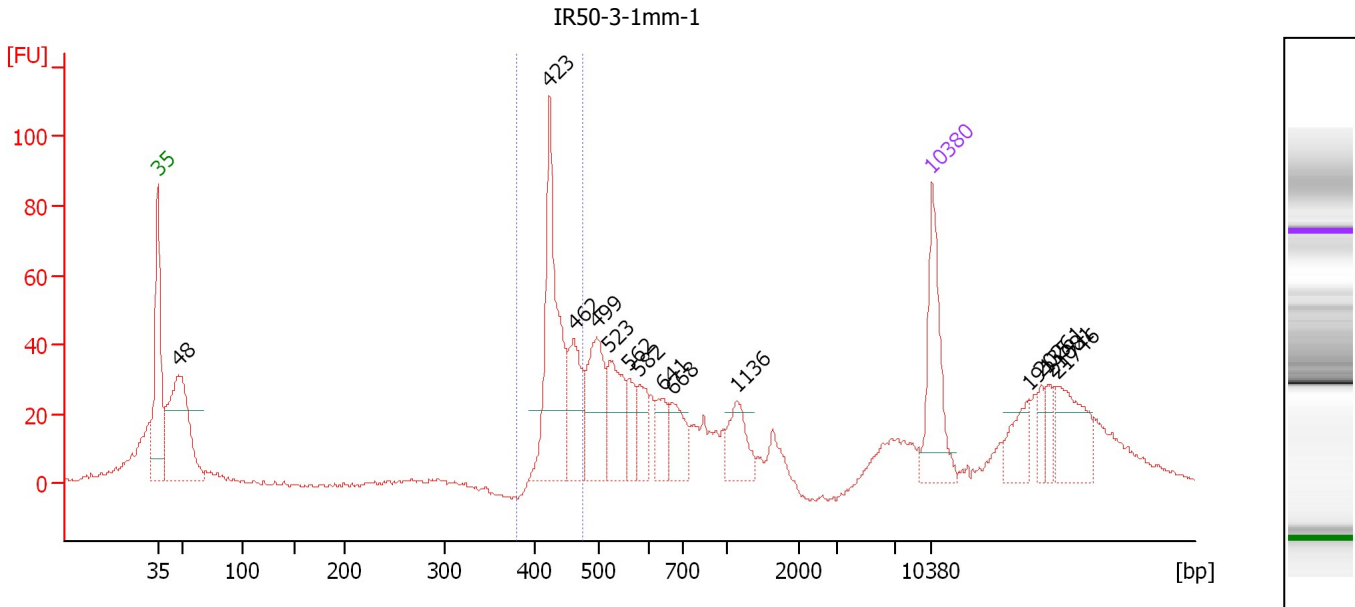
... Region table for sample 7 : Nip-LP-3-Endo-2

From [bp]	To [bp]	Average Size [bp]	Molarity [pmol/l]	Conc. [pg/ $\mu$ l]	Corr. Area	% of Total	Size distribution in CV [%]	Color
378	461	436	267.6	77.02	74.7	7	3.2	

Assay Class: High Sensitivity DNA Assay  
 Data Path: C:\...ents and Settings\Bioanalyzer\2012-08-29\2012-08-29\_003.xad

Created: 8/29/2012 12:56:39 PM  
 Modified: 8/29/2012 1:39:10 PM

**Electropherogram Summary Continued ...**



**Setpoint Deviations for sample 8 : IR50-3-1mm-1**

Height Threshold [FU] : 20

**Overall Results for sample 8 : IR50-3-1mm-1**

Number of peaks found: 14                      Corr. Area 1: 238.0  
 Noise: 0.5

**Peak table for sample 8 : IR50-3-1mm-1**

Peak	Size [bp]	Conc. [pg/µl]	Molarity [pmol/l]	Observations
1	35	125.00	5,411.3	Lower Marker
2	48	236.39	7,522.7	
3	423	192.88	690.7	
4	462	76.31	250.3	
5	499	94.74	287.7	
6	523	70.92	205.4	
7	562	29.87	80.5	
8	582	33.57	87.4	
9	641	29.99	70.9	
10	668	42.82	97.1	
11	1,136	41.61	55.5	
12	10,380	75.00	10.9	Upper Marker
13	19,135	0.00	0.0	
14	20,261	0.00	0.0	
15	21,081	0.00	0.0	
16	21,746	0.00	0.0	

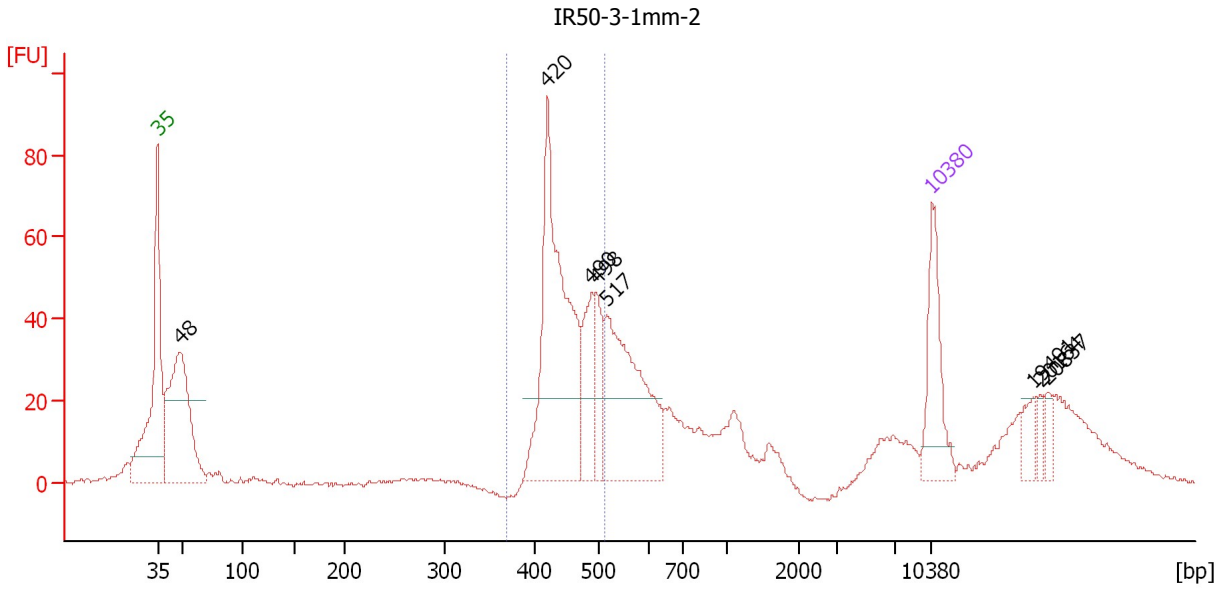
**Region table for sample 8 : IR50-3-1mm-1**

From [bp]	To [bp]	Average Size [bp]	Molarity [pmol/l]	Conc. [pg/µl]	Corr. Area	% of Total	Size distribution in CV [%]	Color
379	476	438	905.8	261.73	238.0	20	4.3	Blue

Assay Class: High Sensitivity DNA Assay  
 Data Path: C:\...ents and Settings\Bioanalyzer\2012-08-29\2012-08-29\_003.xad

Created: 8/29/2012 12:56:39 PM  
 Modified: 8/29/2012 1:39:10 PM

**Electropherogram Summary Continued ...**



**Setpoint Deviations for sample 9 : IR50-3-1mm-2**

Height Threshold [FU] : 20

**Overall Results for sample 9 : IR50-3-1mm-2**

Number of peaks found: 8                      Corr. Area 1: 377.8  
 Noise: 0.5

**Peak table for sample 9 : IR50-3-1mm-2**

Peak	Size [bp]	Conc. [pg/μl]	Molarity [pmol/l]	Observations
1	35	125.00	5,411.3	Lower Marker
2	48	305.84	9,566.4	
3	420	359.48	1,296.7	
4	490	77.76	240.3	
5	498	57.11	173.9	
6	517	238.97	700.0	
7	10,380	75.00	10.9	Upper Marker
8	19,491	0.00	0.0	
9	20,164	0.00	0.0	
10	20,837	0.00	0.0	

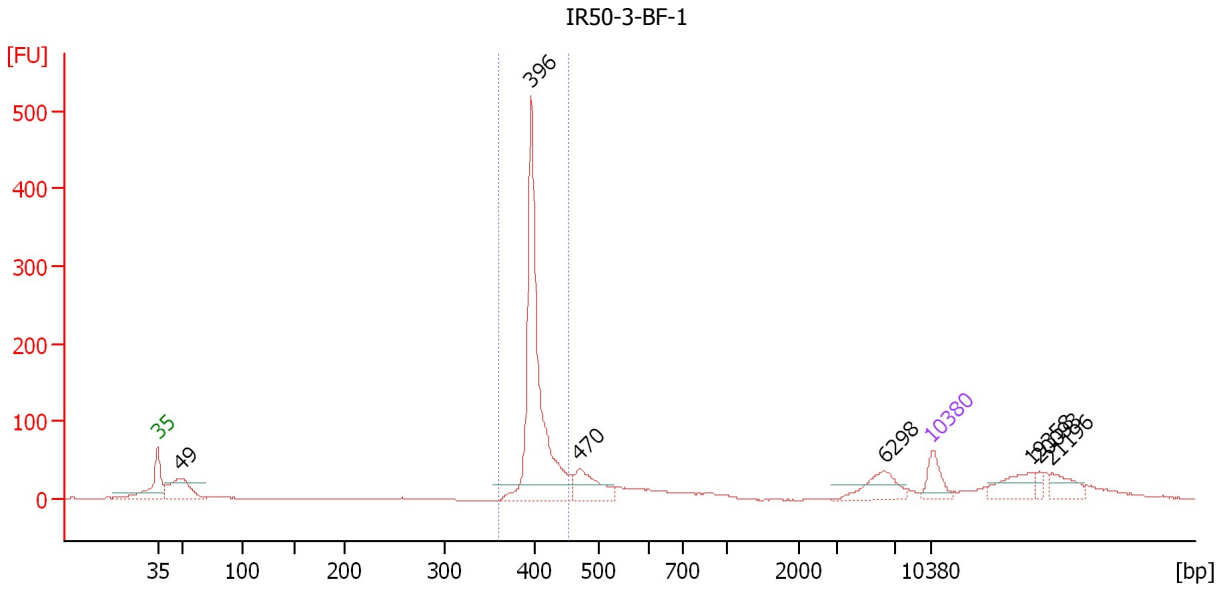
**Region table for sample 9 : IR50-3-1mm-2**

From [bp]	To [bp]	Average Size [bp]	Molarity [pmol/l]	Conc. [pg/μl]	Corr. Area	% of Total	Size distribution in CV [%]	Color
369	513	452	1,698.0	505.08	377.8	34	7.1	Blue

Assay Class: High Sensitivity DNA Assay  
 Data Path: C:\...ents and Settings\Bioanalyzer\2012-08-29\2012-08-29\_003.xad

Created: 8/29/2012 12:56:39 PM  
 Modified: 8/29/2012 1:39:10 PM

**Electropherogram Summary Continued ...**



**Setpoint Deviations for sample 10 : IR50-3-BF-1**

Height Threshold [FU] : 20

**Overall Results for sample 10 : IR50-3-BF-1**

Number of peaks found: 7                      Corr. Area 1: 748.1  
 Noise: 0.5

**Peak table for sample 10 : IR50-3-BF-1**

Peak	Size [bp]	Conc. [pg/μl]	Molarity [pmol/l]	Observations
1	35	125.00	5,411.3	Lower Marker
2	49	243.54	7,587.9	
3	396	1,071.60	4,104.0	
4	470	175.69	565.8	
5	6,298	114.98	27.7	
6	10,380	75.00	10.9	Upper Marker
7	19,358	0.00	0.0	
8	20,093	0.00	0.0	
9	21,196	0.00	0.0	

**Region table for sample 10 : IR50-3-BF-1**

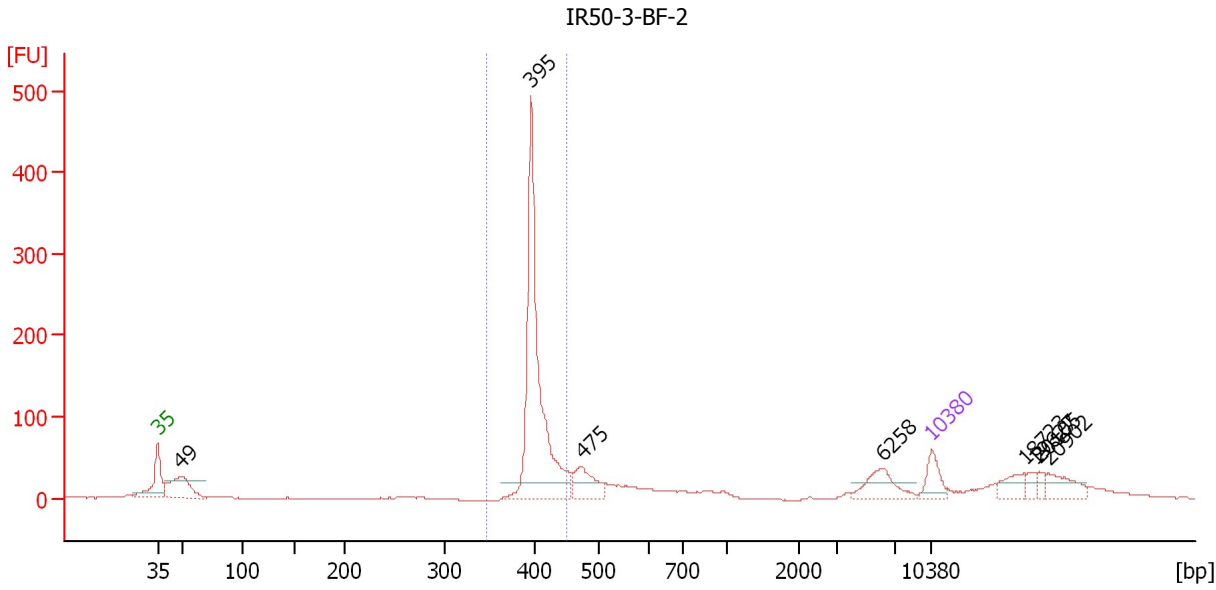
From [bp]	To [bp]	Average Size [bp]	Molarity [pmol/l]	Conc. [pg/μl]	Corr. Area	% of Total	Size distribution in CV [%]	Color
360	454	404	3,779.7	1,006.05	748.1	51	3.8	Blue



Assay Class: High Sensitivity DNA Assay  
 Data Path: C:\...ents and Settings\Bioanalyzer\2012-08-29\2012-08-29\_003.xad

Created: 8/29/2012 12:56:39 PM  
 Modified: 8/29/2012 1:39:10 PM

**Electropherogram Summary Continued ...**



**Setpoint Deviations for sample 11 : IR50-3-BF-2**

Height Threshold [FU] : 20

**Overall Results for sample 11 : IR50-3-BF-2**

Number of peaks found: 8                      Corr. Area 1: 701.9  
 Noise: 0.4

**Peak table for sample 11 : IR50-3-BF-2**

Peak	Size [bp]	Conc. [pg/μl]	Molarity [pmol/l]	Observations
1	35	125.00	5,411.3	Lower Marker
2	49	269.18	8,298.0	
3	395	1,093.31	4,189.1	
4	475	152.97	488.1	
5	6,258	120.48	29.2	
6	10,380	75.00	10.9	Upper Marker
7	18,723	0.00	0.0	
8	19,627	0.00	0.0	
9	20,105	0.00	0.0	
10	20,902	0.00	0.0	

**Region table for sample 11 : IR50-3-BF-2**

From [bp]	To [bp]	Average Size [bp]	Molarity [pmol/l]	Conc. [pg/μl]	Corr. Area	% of Total	Size distribution in CV [%]	Color
346	451	404	3,868.0	1,029.39	701.9	51	3.6	Blue

Assay Class: High Sensitivity DNA Assay  
Data Path: C:\...ents and Settings\Bioanalyzer\2012-08-29\2012-08-29\_003.xad

Created: 8/29/2012 12:56:39 PM  
Modified: 8/29/2012 1:39:10 PM

**Gel Image**

