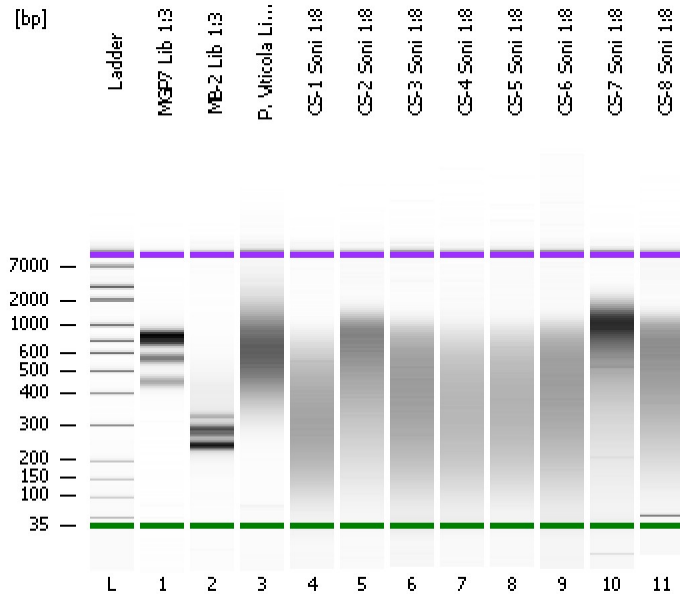


Assay Class: High Sensitivity DNA Assay
Data Path: C:\...ents and Settings\Bioanalyzer\2012-08-29\2012-08-29_004.xad

Created: 8/29/2012 2:03:56 PM
Modified: 8/29/2012 2:46:45 PM

Electrophoresis File Run Summary



Instrument Information:

Instrument Name: DE13701086 Firmware: C.01.069
Serial#: DE13701086 Type: G2938B

Assay Information:

Assay Origin Path: C:\Program Files\Agilent\2100 bioanalyzer\2100 expert\assays\dsDNA\High Sensitivity DNA.xsy
Assay Class: High Sensitivity DNA Assay
Version: 1.03
Assay Comments: Copyright © 2003-2010 Agilent Technologies

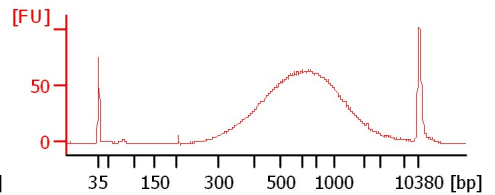
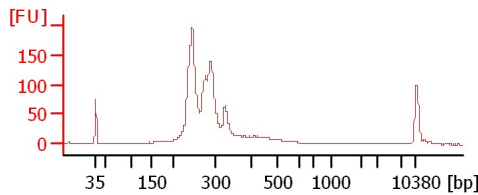
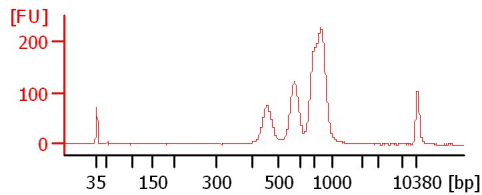
Chip Information:

Chip Lot #:
Reagent Kit Lot #:
Chip Comments:

MGP7 Lib 1:3

MB-2 Lib 1:3

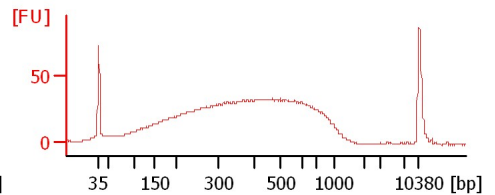
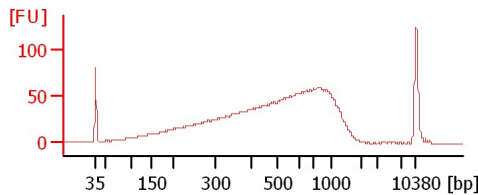
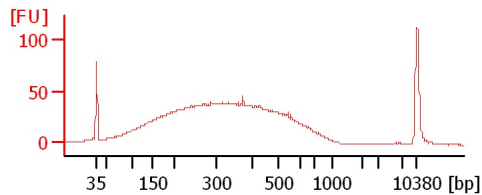
P. Viticola Lib 1:5



CS-1 Soni 1:8

CS-2 Soni 1:8

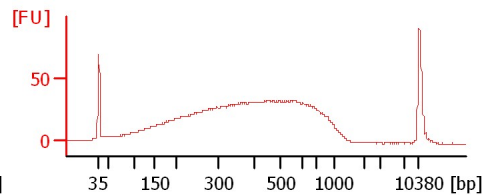
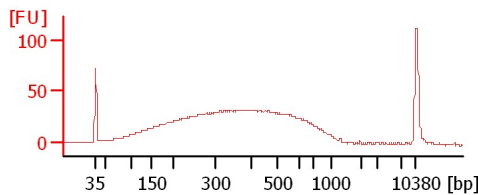
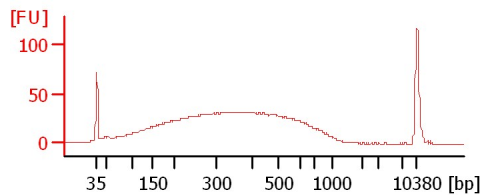
CS-3 Soni 1:8



CS-4 Soni 1:8

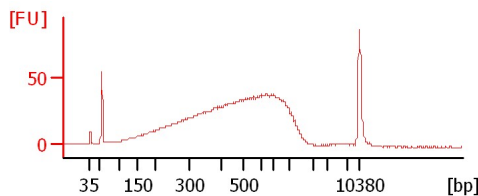
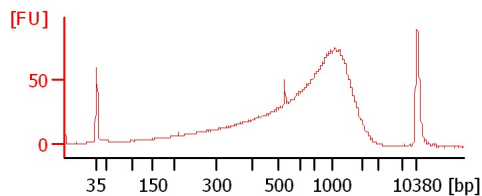
CS-5 Soni 1:8

CS-6 Soni 1:8



CS-7 Soni 1:8

CS-8 Soni 1:8



Assay Class: High Sensitivity DNA Assay
 Data Path: C:\...ents and Settings\Bioanalyzer\2012-08-29\2012-08-29_004.xad

Created: 8/29/2012 2:03:56 PM
 Modified: 8/29/2012 2:46:45 PM

Electrophoresis File Run Summary (Chip Summary)

| Sample Name | Sample Comment | Rest. Digest | Status | Observation | Result Label | Result Color |
|---------------------|----------------|--------------------------|--------|-------------|--------------|--------------|
| MGP7 Lib 1:3 | | <input type="checkbox"/> | ✓ | | | |
| MB-2 Lib 1:3 | | <input type="checkbox"/> | ✓ | | | |
| P. Viticola Lib 1:5 | | <input type="checkbox"/> | ✓ | | | |
| CS-1 Soni 1:8 | | <input type="checkbox"/> | ✓ | | | |
| CS-2 Soni 1:8 | | <input type="checkbox"/> | ✓ | | | |
| CS-3 Soni 1:8 | | <input type="checkbox"/> | ✓ | | | |
| CS-4 Soni 1:8 | | <input type="checkbox"/> | ✓ | | | |
| CS-5 Soni 1:8 | | <input type="checkbox"/> | ✓ | | | |
| CS-6 Soni 1:8 | | <input type="checkbox"/> | ✓ | | | |
| CS-7 Soni 1:8 | | <input type="checkbox"/> | ✓ | | | |
| CS-8 Soni 1:8 | | <input type="checkbox"/> | ✓ | | | |
| Ladder | | <input type="checkbox"/> | ✓ | | | |

Chip Lot #

Reagent Kit Lot #

Chip Comments :

Assay Class: High Sensitivity DNA Assay
Data Path: C:\...ents and Settings\Bioanalyzer\2012-08-29\2012-08-29_004.xad

Created: 8/29/2012 2:03:56 PM
Modified: 8/29/2012 2:46:45 PM

Electrophoresis Assay Details

General Analysis Settings

Number of Available Sample and Ladder Wells (Max.) : 12
Minimum Visible Range [s] : 32
Maximum Visible Range [s] : 138
Start Analysis Time Range [s] : 33
End Analysis Time Range [s] : 137.5
Ladder Concentration [pg/μl] : 1950
Uses Standard Area for Ladder Fragments
Lower Marker Concentration [pg/μl] : 125
Upper Marker Concentration [pg/μl] : 75
Used Upper Marker for Quantitation
Standard Curve Fit is Point to Point
Show Data Aligned to Lower and Upper Marker

Integrator Settings

Integration Start Time [s] : 33.05
Integration End Time [s] : 137
Slope Threshold : 0.8
Height Threshold [FU] : 5
Area Threshold : 0.1
Width Threshold [s] : 0.6
Baseline Plateau [s] : 0.5

Filter Settings

Filter Width [s] : 0.5
Polynomial Order : 4

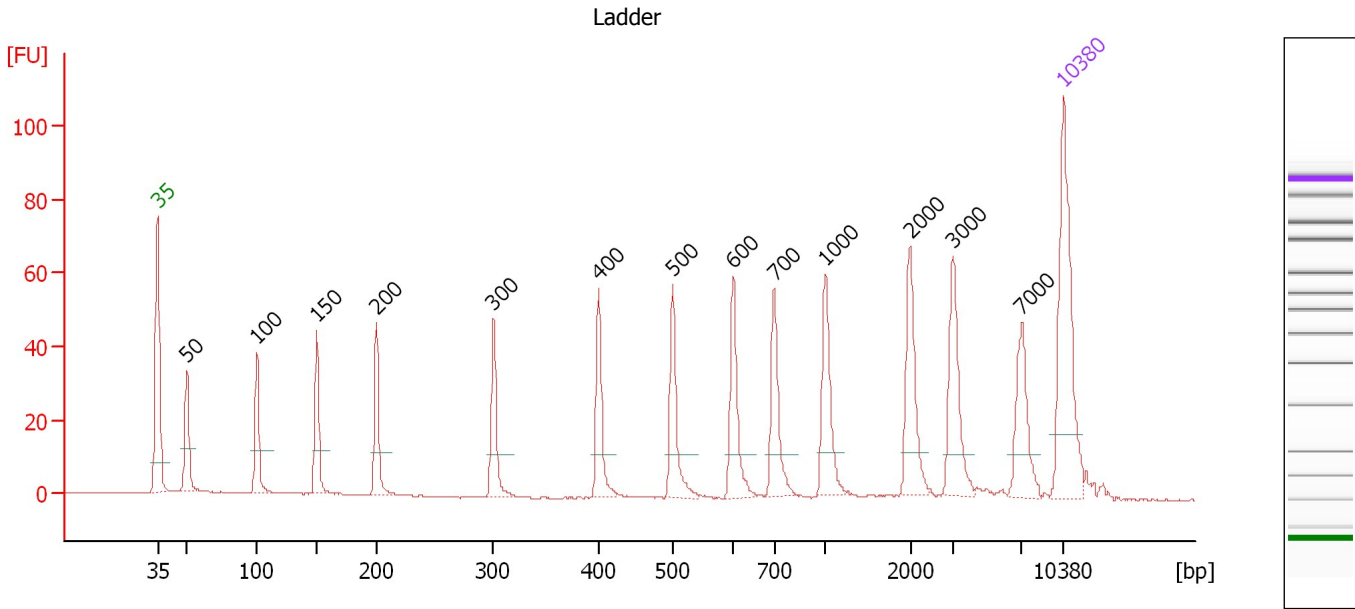
Ladder

| Ladder Peak | Size | Area |
|-------------|-------|------|
| 1 | 35 | 160 |
| 2 | 50 | 210 |
| 3 | 100 | 208 |
| 4 | 150 | 221 |
| 5 | 200 | 242 |
| 6 | 300 | 270 |
| 7 | 400 | 305 |
| 8 | 500 | 306 |
| 9 | 600 | 336 |
| 10 | 700 | 321 |
| 11 | 1000 | 366 |
| 12 | 2000 | 413 |
| 13 | 3000 | 411 |
| 14 | 7000 | 400 |
| 15 | 10380 | 214 |

Assay Class: High Sensitivity DNA Assay
 Data Path: C:\...ents and Settings\Bioanalyzer\2012-08-29\2012-08-29_004.xad

Created: 8/29/2012 2:03:56 PM
 Modified: 8/29/2012 2:46:45 PM

Electropherogram Summary



Overall Results for Ladder

Noise: 0.1

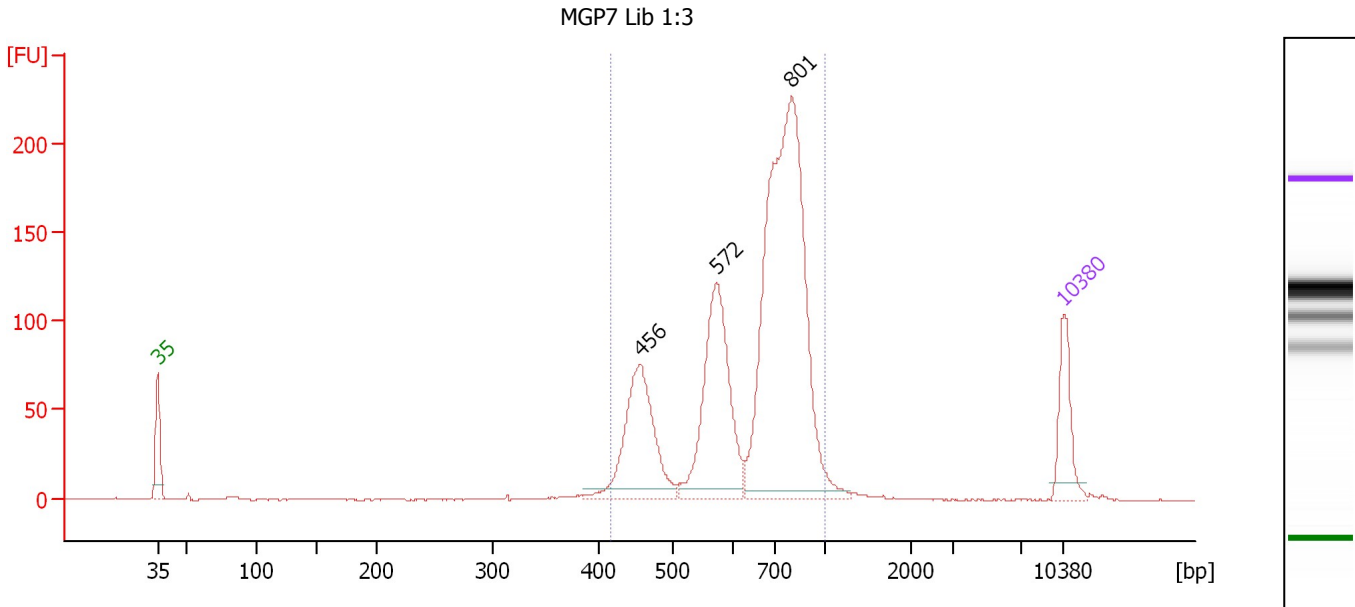
Peak table for Ladder

| Peak | Size [bp] | Conc. [pg/μl] | Molarity [pmol/l] | Observations |
|------|-----------|---------------|-------------------|--------------|
| 1 | 35 | 125.00 | 5,411.3 | Lower Marker |
| 2 | 50 | 150.00 | 4,545.5 | Ladder Peak |
| 3 | 100 | 150.00 | 2,272.7 | Ladder Peak |
| 4 | 150 | 150.00 | 1,515.2 | Ladder Peak |
| 5 | 200 | 150.00 | 1,136.4 | Ladder Peak |
| 6 | 300 | 150.00 | 757.6 | Ladder Peak |
| 7 | 400 | 150.00 | 568.2 | Ladder Peak |
| 8 | 500 | 150.00 | 454.5 | Ladder Peak |
| 9 | 600 | 150.00 | 378.8 | Ladder Peak |
| 10 | 700 | 150.00 | 324.7 | Ladder Peak |
| 11 | 1,000 | 150.00 | 227.3 | Ladder Peak |
| 12 | 2,000 | 150.00 | 113.6 | Ladder Peak |
| 13 | 3,000 | 150.00 | 75.8 | Ladder Peak |
| 14 | 7,000 | 150.00 | 32.5 | Ladder Peak |
| 15 | 10,380 | 75.00 | 10.9 | Upper Marker |

Assay Class: High Sensitivity DNA Assay
 Data Path: C:\...ents and Settings\Bioanalyzer\2012-08-29\2012-08-29_004.xad

Created: 8/29/2012 2:03:56 PM
 Modified: 8/29/2012 2:46:45 PM

Electropherogram Summary Continued ...



Overall Results for sample 1 : MGP7 Lib 1:3

Number of peaks found: 3 Corr. Area 1: 1,499.4
 Noise: 0.2

Peak table for sample 1 : MGP7 Lib 1:3

| Peak | Size [bp] | Conc. [pg/μl] | Molarity [pmol/l] | Observations |
|------|-----------|---------------|-------------------|--------------|
| 1 | 35 | 125.00 | 5,411.3 | Lower Marker |
| 2 | 456 | 270.91 | 899.4 | |
| 3 | 572 | 336.52 | 891.4 | |
| 4 | 801 | 868.62 | 1,642.7 | |
| 5 | 10,380 | 75.00 | 10.9 | Upper Marker |

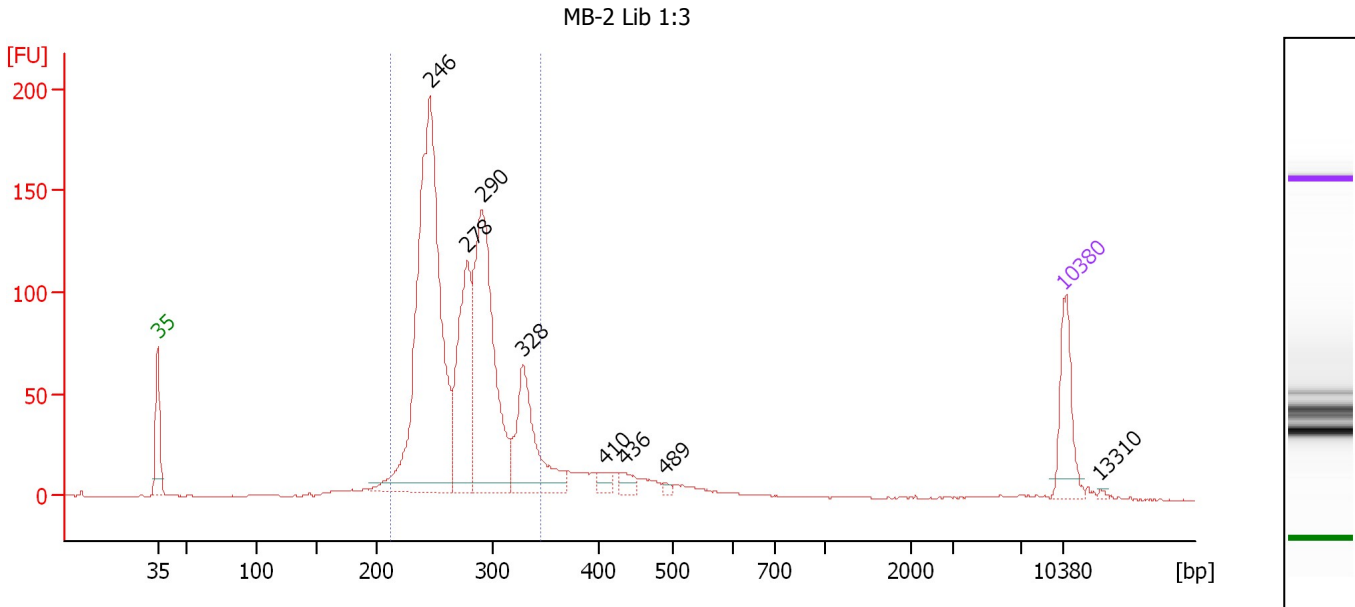
Region table for sample 1 : MGP7 Lib 1:3

| From [bp] | To [bp] | Average Size [bp] | Molarity [pmol/l] | Conc. [pg/μl] | Corr. Area | % of Total | Size distribution in CV [%] | Color |
|-----------|---------|-------------------|-------------------|---------------|------------|------------|-----------------------------|-------|
| 418 | 1,000 | 678 | 3,514.0 | 1,477.33 | 1,499.4 | 96 | 20.7 | Blue |

Assay Class: High Sensitivity DNA Assay
 Data Path: C:\...ents and Settings\Bioanalyzer\2012-08-29\2012-08-29_004.xad

Created: 8/29/2012 2:03:56 PM
 Modified: 8/29/2012 2:46:45 PM

Electropherogram Summary Continued ...



Overall Results for sample 2 : MB-2 Lib 1:3

Number of peaks found: 8 Corr. Area 1: 1,417.1
 Noise: 0.2

Peak table for sample 2 : MB-2 Lib 1:3

| Peak | Size [bp] | Conc. [pg/μl] | Molarity [pmol/l] | Observations |
|------|-----------|---------------|-------------------|--------------|
| 1 | 35 | 125.00 | 5,411.3 | Lower Marker |
| 2 | 246 | 874.51 | 5,396.8 | |
| 3 | 278 | 272.83 | 1,489.6 | |
| 4 | 290 | 486.00 | 2,539.1 | |
| 5 | 328 | 203.57 | 940.9 | |
| 6 | 410 | 19.60 | 72.5 | |
| 7 | 436 | 18.76 | 65.2 | |
| 8 | 489 | 5.28 | 16.3 | |
| 9 | 10,380 | 75.00 | 10.9 | Upper Marker |
| 10 | 13,310 | 0.00 | 0.0 | |

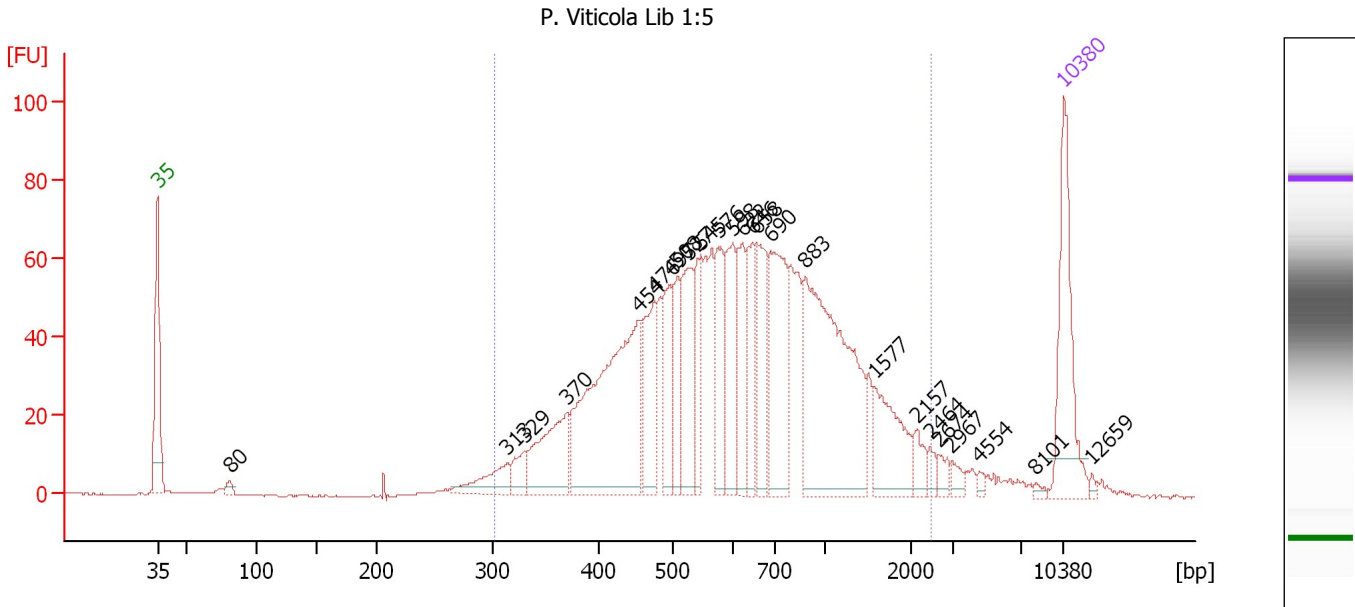
Region table for sample 2 : MB-2 Lib 1:3

| From [bp] | To [bp] | Average Size [bp] | Molarity [pmol/l] | Conc. [pg/μl] | Corr. Area | % of Total | Size distribution in CV [%] | Color |
|-----------|---------|-------------------|-------------------|---------------|------------|------------|-----------------------------|-------|
| 212 | 345 | 272 | 10,330.1 | 1,836.35 | 1,417.1 | 83 | 11.2 | Blue |

Assay Class: High Sensitivity DNA Assay
 Data Path: C:\...ents and Settings\Bioanalyzer\2012-08-29\2012-08-29_004.xad

Created: 8/29/2012 2:03:56 PM
 Modified: 8/29/2012 2:46:45 PM

Electropherogram Summary Continued ...



Setpoint Deviations for sample 3 : P. Viticola Lib 1:5

Height Threshold [FU] : 2

Overall Results for sample 3 : P. Viticola Lib 1:5

Number of peaks found: 25 Corr. Area 1: 1,553.8
 Noise: 0.2

Peak table for sample 3 : P. Viticola Lib 1:5

| Peak | Size [bp] | Conc. [pg/μl] | Molarity [pmol/l] | Observations |
|------|-----------|---------------|-------------------|--------------|
| 1 | 35 | 125.00 | 5,411.3 | Lower Marker |
| 2 | 80 | 6.43 | 121.2 | |
| 3 | 313 | 33.35 | 161.3 | |
| 4 | 329 | 18.68 | 85.9 | |
| 5 | 370 | 78.25 | 320.0 | |
| 6 | 454 | 240.15 | 800.6 | |
| 7 | 476 | 69.92 | 222.8 | |
| 8 | 497 | 57.70 | 176.0 | |
| 9 | 508 | 42.99 | 128.3 | |
| 10 | 527 | 73.58 | 211.4 | |
| 11 | 545 | 44.14 | 122.7 | |
| 12 | 576 | 51.09 | 134.5 | |
| 13 | 598 | 59.85 | 151.6 | |
| 14 | 622 | 53.38 | 130.0 | |
| 15 | 646 | 50.50 | 118.5 | |
| 16 | 658 | 63.41 | 146.1 | |
| 17 | 690 | 103.41 | 227.0 | |
| 18 | 883 | 220.81 | 378.9 | |
| 19 | 1,577 | 54.96 | 52.8 | |
| 20 | 2,157 | 12.76 | 9.0 | |
| 21 | 2,464 | 6.75 | 4.1 | |
| 22 | 2,674 | 7.11 | 4.0 | |

Assay Class: High Sensitivity DNA Assay
 Data Path: C:\...ents and Settings\Bioanalyzer\2012-08-29\2012-08-29_004.xad

Created: 8/29/2012 2:03:56 PM
 Modified: 8/29/2012 2:46:45 PM

Electropherogram Summary Continued ...

... Peak table for sample 3 : P. Viticola Lib 1:5

| Peak | Size [bp] | Conc. [pg/μl] | Molarity [pmol/l] | Observations |
|------|-----------|---------------|-------------------|--------------|
| 23 | 2,967 | 6.18 | 3.2 | |
| 24 | 4,554 | 3.29 | 1.1 | |
| 25 | 8,101 | 2.50 | 0.5 | |
| 26 | 10,380 | 75.00 | 10.9 | Upper Marker |
| 27 | 12,659 | 0.00 | 0.0 | |

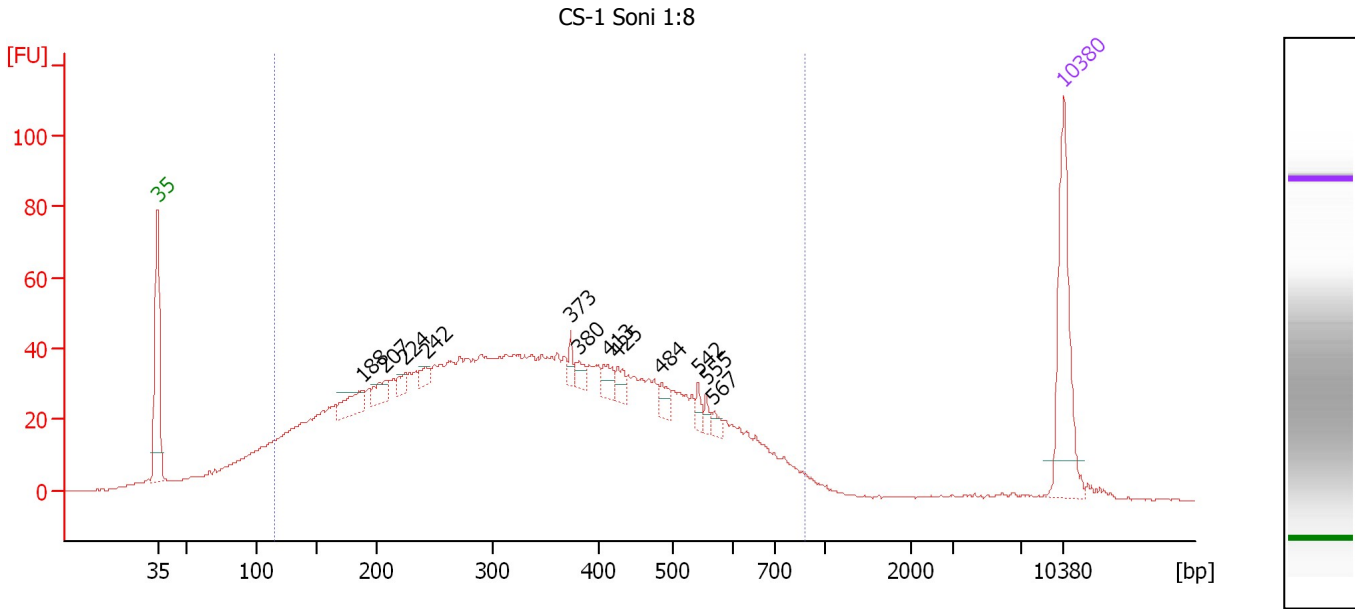
Region table for sample 3 : P. Viticola Lib 1:5

| From [bp] | To [bp] | Average Size [bp] | Molarity [pmol/l] | Conc. [pg/μl] | Corr. Area | % of Total | Size distribution in CV [%] | Color |
|-----------|---------|-------------------|-------------------|---------------|------------|------------|-----------------------------|---|
| 301 | 2,464 | 741 | 4,060.7 | 1,538.65 | 1,553.8 | 94 | 54.3 |  |

Assay Class: High Sensitivity DNA Assay
 Data Path: C:\...ents and Settings\Bioanalyzer\2012-08-29\2012-08-29_004.xad

Created: 8/29/2012 2:03:56 PM
 Modified: 8/29/2012 2:46:45 PM

Electropherogram Summary Continued ...



Overall Results for sample 4 : CS-1 Soni 1:8

Number of peaks found: 12 Corr. Area 1: 1,754.3
 Noise: 0.2

Peak table for sample 4 : CS-1 Soni 1:8

| Peak | Size [bp] | Conc. [pg/μl] | Molarity [pmol/l] | Observations |
|------|-----------|---------------|-------------------|--------------|
| 1 | 35 | 125.00 | 5,411.3 | Lower Marker |
| 2 | 188 | 26.93 | 216.6 | |
| 3 | 207 | 17.00 | 124.4 | |
| 4 | 224 | 9.34 | 63.1 | |
| 5 | 242 | 8.83 | 55.2 | |
| 6 | 373 | 8.65 | 35.1 | |
| 7 | 380 | 8.44 | 33.6 | |
| 8 | 413 | 12.78 | 46.9 | |
| 9 | 425 | 11.89 | 42.4 | |
| 10 | 484 | 11.73 | 36.7 | |
| 11 | 542 | 7.34 | 20.5 | |
| 12 | 555 | 5.83 | 15.9 | |
| 13 | 567 | 6.67 | 17.8 | |
| 14 | 10,380 | 75.00 | 10.9 | Upper Marker |

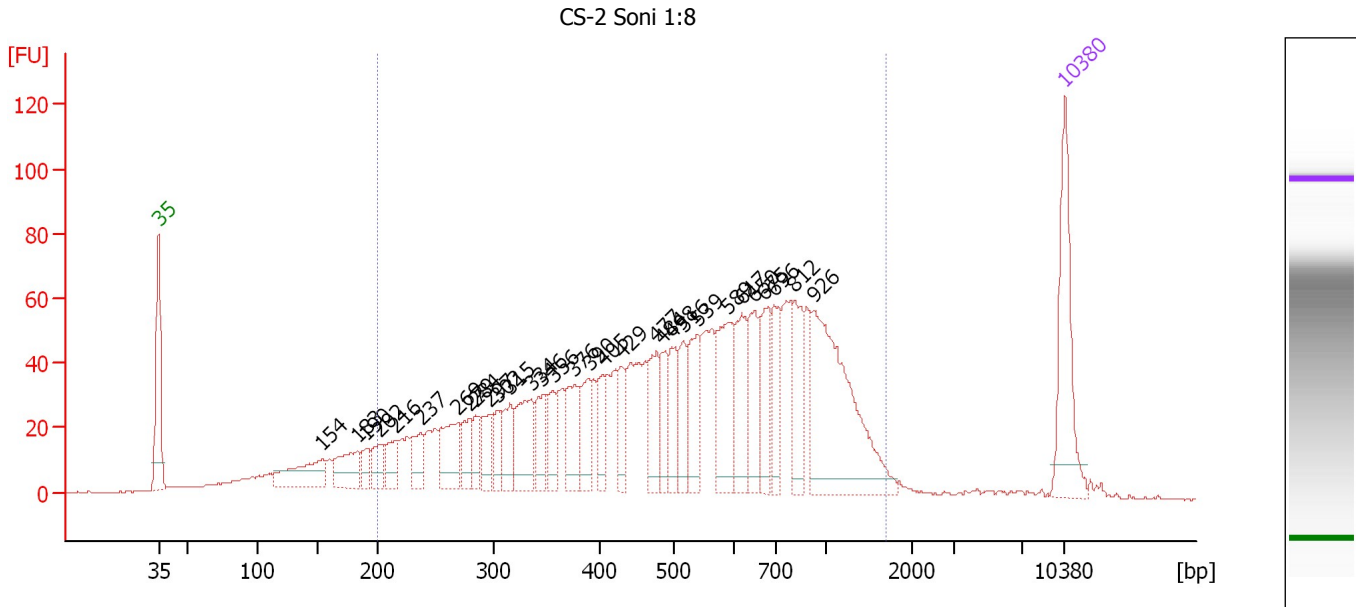
Region table for sample 4 : CS-1 Soni 1:8

| From [bp] | To [bp] | Average Size [bp] | Molarity [pmol/l] | Conc. [pg/μl] | Corr. Area | % of Total | Size distribution in CV [%] | Color |
|-----------|---------|-------------------|-------------------|---------------|------------|------------|-----------------------------|-------|
| 115 | 879 | 351 | 12,107.7 | 2,114.60 | 1,754.3 | 91 | 41.5 | Blue |

Assay Class: High Sensitivity DNA Assay
 Data Path: C:\...ents and Settings\Bioanalyzer\2012-08-29\2012-08-29_004.xad

Created: 8/29/2012 2:03:56 PM
 Modified: 8/29/2012 2:46:45 PM

Electropherogram Summary Continued ...



Overall Results for sample 5 : CS-2 Soni 1:8

Number of peaks found: 31 Corr. Area 1: 1,821.3
 Noise: 0.2

Peak table for sample 5 : CS-2 Soni 1:8

| Peak | Size [bp] | Conc. [pg/μl] | Molarity [pmol/l] | Observations |
|------|-----------|---------------|-------------------|--------------|
| 1 | 35 | 125.00 | 5,411.3 | Lower Marker |
| 2 | 154 | 62.25 | 613.2 | |
| 3 | 183 | 46.26 | 383.8 | |
| 4 | 190 | 17.39 | 138.7 | |
| 5 | 202 | 26.28 | 197.0 | |
| 6 | 216 | 27.82 | 195.1 | |
| 7 | 237 | 30.42 | 194.5 | |
| 8 | 269 | 56.70 | 319.7 | |
| 9 | 279 | 29.87 | 162.3 | |
| 10 | 284 | 23.88 | 127.5 | |
| 11 | 297 | 29.13 | 148.8 | |
| 12 | 302 | 24.51 | 122.9 | |
| 13 | 315 | 38.35 | 184.6 | |
| 14 | 334 | 62.66 | 283.8 | |
| 15 | 346 | 36.70 | 160.8 | |
| 16 | 356 | 33.32 | 141.8 | |
| 17 | 376 | 44.39 | 178.7 | |
| 18 | 390 | 38.58 | 149.9 | |
| 19 | 405 | 28.68 | 107.4 | |
| 20 | 429 | 30.12 | 106.3 | |
| 21 | 477 | 41.82 | 132.9 | |
| 22 | 484 | 32.69 | 102.3 | |
| 23 | 498 | 40.58 | 123.5 | |
| 24 | 516 | 38.36 | 112.7 | |
| 25 | 539 | 51.55 | 145.0 | |
| 26 | 589 | 72.92 | 187.6 | |

Assay Class: High Sensitivity DNA Assay
 Data Path: C:\...ents and Settings\Bioanalyzer\2012-08-29\2012-08-29_004.xad


Created: 8/29/2012 2:03:56 PM
 Modified: 8/29/2012 2:46:45 PM

Electropherogram Summary Continued ...

... Peak table for sample 5 : CS-2 Soni 1:8

| Peak | Size [bp] | Conc. [pg/μl] | Molarity [pmol/l] | Observations |
|------|-----------|---------------|-------------------|--------------|
| 27 | 617 | 56.22 | 138.0 | |
| 28 | 650 | 52.13 | 121.5 | |
| 29 | 675 | 50.68 | 113.8 | |
| 30 | 696 | 40.36 | 87.8 | |
| 31 | 812 | 54.78 | 102.2 | |
| 32 | 926 | 183.66 | 300.7 | |
| 33 | ▶ 10,380 | 75.00 | 10.9 | Upper Marker |

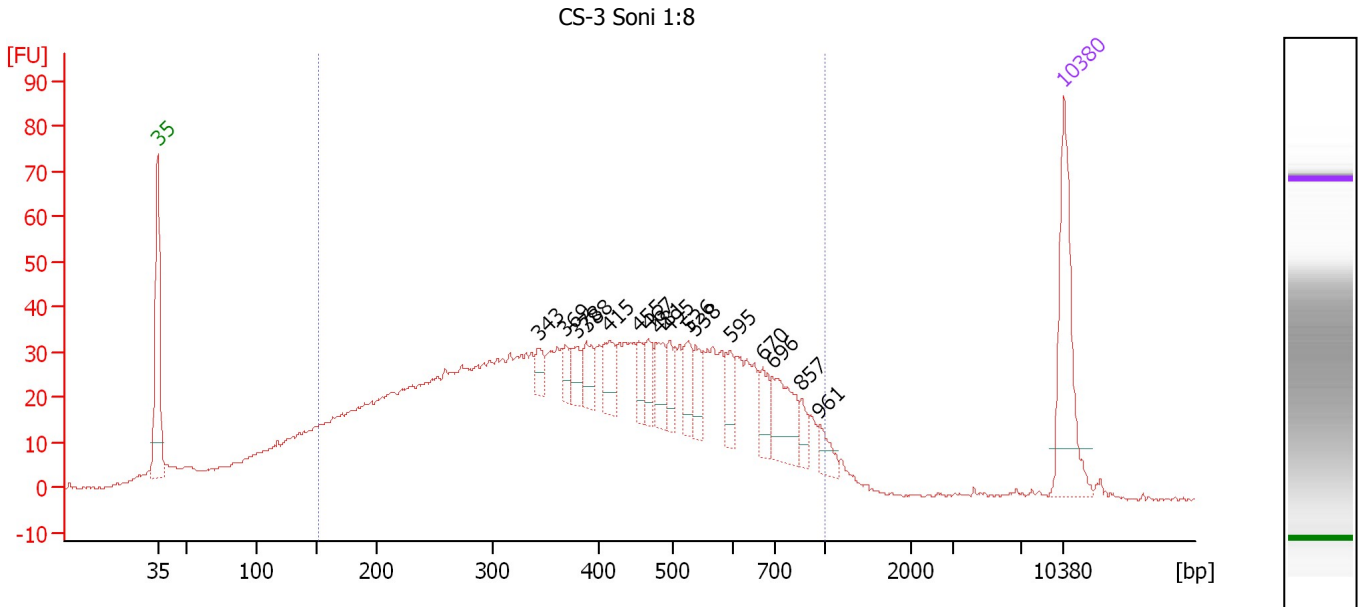
Region table for sample 5 : CS-2 Soni 1:8

| From [bp] | To [bp] | Average Size [bp] | Molarity [pmol/l] | Conc. [pg/μl] | Corr. Area | % of Total | Size distribution in CV [%] | Color |
|-----------|---------|-------------------|-------------------|---------------|------------|------------|-----------------------------|---|
| 200 | 1,696 | 588 | 6,166.0 | 1,753.45 | 1,821.3 | 87 | 49.5 |  |

Assay Class: High Sensitivity DNA Assay
 Data Path: C:\...ents and Settings\Bioanalyzer\2012-08-29\2012-08-29_004.xad

Created: 8/29/2012 2:03:56 PM
 Modified: 8/29/2012 2:46:45 PM

Electropherogram Summary Continued ...



Overall Results for sample 6 : CS-3 Soni 1:8

Number of peaks found: 16 Corr. Area 1: 1,453.2
 Noise: 0.2

Peak table for sample 6 : CS-3 Soni 1:8

| Peak | Size [bp] | Conc. [pg/μl] | Molarity [pmol/l] | Observations |
|------|-----------|---------------|-------------------|--------------|
| 1 | 35 | 125.00 | 5,411.3 | Lower Marker |
| 2 | 343 | 15.35 | 67.9 | |
| 3 | 369 | 13.92 | 57.2 | |
| 4 | 378 | 19.64 | 78.6 | |
| 5 | 388 | 22.16 | 86.5 | |
| 6 | 415 | 28.26 | 103.1 | |
| 7 | 455 | 18.13 | 60.4 | |
| 8 | 467 | 21.48 | 69.7 | |
| 9 | 481 | 27.50 | 86.7 | |
| 10 | 495 | 19.05 | 58.3 | |
| 11 | 526 | 22.20 | 64.0 | |
| 12 | 538 | 22.80 | 64.2 | |
| 13 | 595 | 19.35 | 49.3 | |
| 14 | 670 | 24.40 | 55.1 | |
| 15 | 696 | 47.73 | 104.0 | |
| 16 | 857 | 11.50 | 20.3 | |
| 17 | 961 | 13.77 | 21.7 | |
| 18 | 10,380 | 75.00 | 10.9 | Upper Marker |

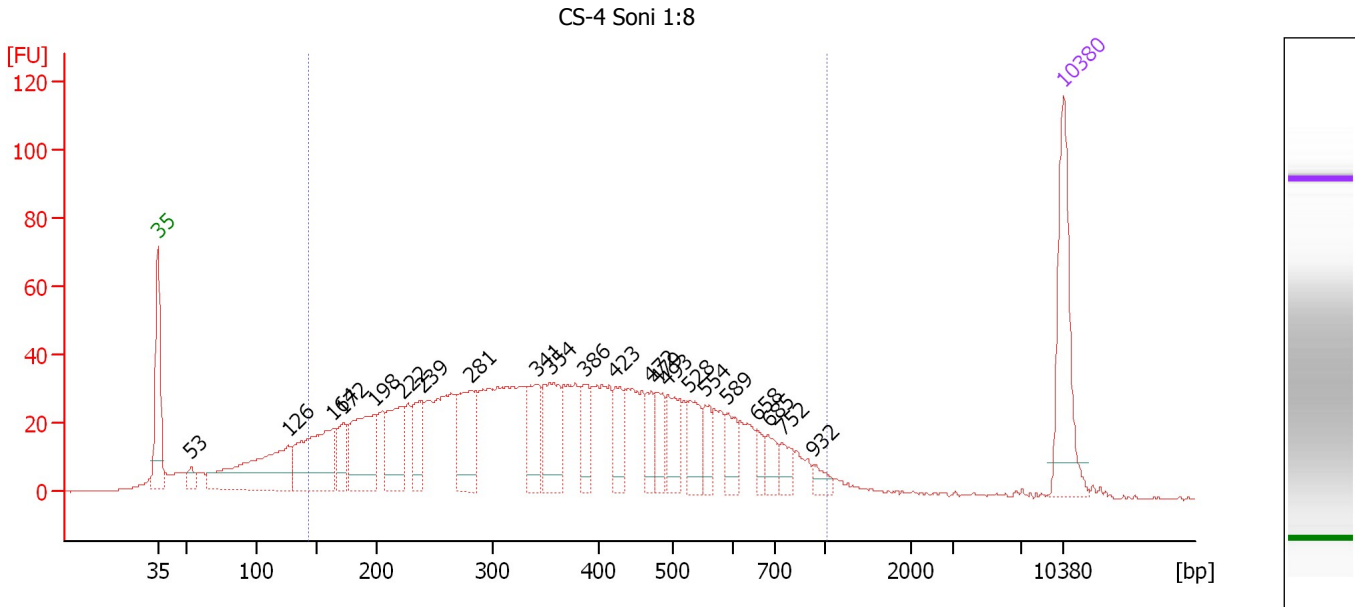
Region table for sample 6 : CS-3 Soni 1:8

| From [bp] | To [bp] | Average Size [bp] | Molarity [pmol/l] | Conc. [pg/μl] | Corr. Area | % of Total | Size distribution in CV [%] | Color |
|-----------|---------|-------------------|-------------------|---------------|------------|------------|-----------------------------|-------|
| 152 | 1,000 | 424 | 9,254.6 | 1,970.50 | 1,453.2 | 86 | 42.3 | Blue |

Assay Class: High Sensitivity DNA Assay
 Data Path: C:\...ents and Settings\Bioanalyzer\2012-08-29\2012-08-29_004.xad

Created: 8/29/2012 2:03:56 PM
 Modified: 8/29/2012 2:46:45 PM

Electropherogram Summary Continued ...



Overall Results for sample 7 : CS-4 Soni 1:8

Number of peaks found: 22 Corr. Area 1: 1,428.4
 Noise: 0.2

Peak table for sample 7 : CS-4 Soni 1:8

| Peak | Size [bp] | Conc. [pg/μl] | Molarity [pmol/l] | Observations |
|------|-----------|---------------|-------------------|--------------|
| 1 | 35 | 125.00 | 5,411.3 | Lower Marker |
| 2 | 53 | 12.18 | 348.5 | |
| 3 | 126 | 144.25 | 1,731.7 | |
| 4 | 164 | 121.90 | 1,127.1 | |
| 5 | 172 | 32.47 | 286.1 | |
| 6 | 198 | 94.48 | 721.9 | |
| 7 | 222 | 72.55 | 495.2 | |
| 8 | 239 | 41.09 | 261.1 | |
| 9 | 281 | 75.47 | 407.0 | |
| 10 | 341 | 49.85 | 221.7 | |
| 11 | 354 | 68.75 | 294.6 | |
| 12 | 386 | 32.83 | 128.8 | |
| 13 | 423 | 32.47 | 116.3 | |
| 14 | 472 | 26.49 | 85.1 | |
| 15 | 479 | 27.75 | 87.8 | |
| 16 | 493 | 37.87 | 116.3 | |
| 17 | 528 | 35.65 | 102.3 | |
| 18 | 554 | 20.49 | 56.0 | |
| 19 | 589 | 24.44 | 62.8 | |
| 20 | 658 | 11.96 | 27.5 | |
| 21 | 685 | 19.82 | 43.8 | |
| 22 | 752 | 15.27 | 30.8 | |
| 23 | 932 | 9.75 | 15.9 | |
| 24 | 10,380 | 75.00 | 10.9 | Upper Marker |

Assay Class: High Sensitivity DNA Assay
Data Path: C:\...ents and Settings\Bioanalyzer\2012-08-29\2012-08-29_004.xad

Created: 8/29/2012 2:03:56 PM
Modified: 8/29/2012 2:46:45 PM

Electropherogram Summary Continued ...

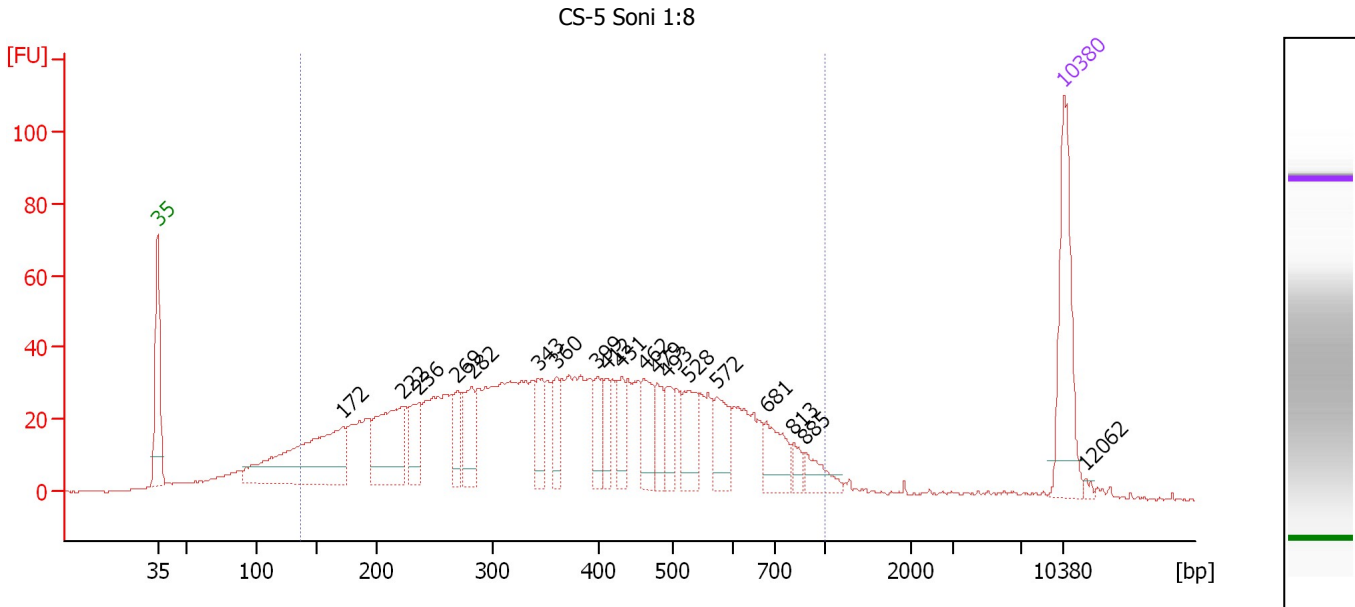
... Region table for sample 7 : CS-4 Soni 1:8

| From [bp] | To [bp] | Average Size [bp] | Molarity [pmol/l] | Conc. [pg/μl] | Corr. Area | % of Total | Size distribution in CV [%] | Color |
|-----------|---------|-------------------|-------------------|---------------|------------|------------|-----------------------------|-------|
| 143 | 1,006 | 390 | 7,689.2 | 1,510.82 | 1,428.4 | 85 | 42.7 | ■ |

Assay Class: High Sensitivity DNA Assay
 Data Path: C:\...ents and Settings\Bioanalyzer\2012-08-29\2012-08-29_004.xad

Created: 8/29/2012 2:03:56 PM
 Modified: 8/29/2012 2:46:45 PM

Electropherogram Summary Continued ...



Overall Results for sample 8 : CS-5 Soni 1:8

Number of peaks found: 19 Corr. Area 1: 1,424.8
 Noise: 0.2

Peak table for sample 8 : CS-5 Soni 1:8

| Peak | Size [bp] | Conc. [pg/μl] | Molarity [pmol/l] | Observations |
|------|-----------|---------------|-------------------|--------------|
| 1 | 35 | 125.00 | 5,411.3 | Lower Marker |
| 2 | 172 | 185.46 | 1,631.9 | |
| 3 | 222 | 102.42 | 698.7 | |
| 4 | 236 | 44.30 | 284.4 | |
| 5 | 269 | 33.14 | 186.8 | |
| 6 | 282 | 44.68 | 240.4 | |
| 7 | 343 | 34.04 | 150.5 | |
| 8 | 360 | 28.83 | 121.4 | |
| 9 | 399 | 26.62 | 101.1 | |
| 10 | 412 | 26.19 | 96.2 | |
| 11 | 431 | 25.68 | 90.3 | |
| 12 | 462 | 38.17 | 125.3 | |
| 13 | 479 | 29.00 | 91.7 | |
| 14 | 493 | 24.73 | 76.0 | |
| 15 | 528 | 43.61 | 125.1 | |
| 16 | 572 | 35.74 | 94.7 | |
| 17 | 681 | 37.76 | 84.1 | |
| 18 | 813 | 9.93 | 18.5 | |
| 19 | 885 | 19.33 | 33.1 | |
| 20 | 10,380 | 75.00 | 10.9 | Upper Marker |
| 21 | 12,062 | 0.00 | 0.0 | |

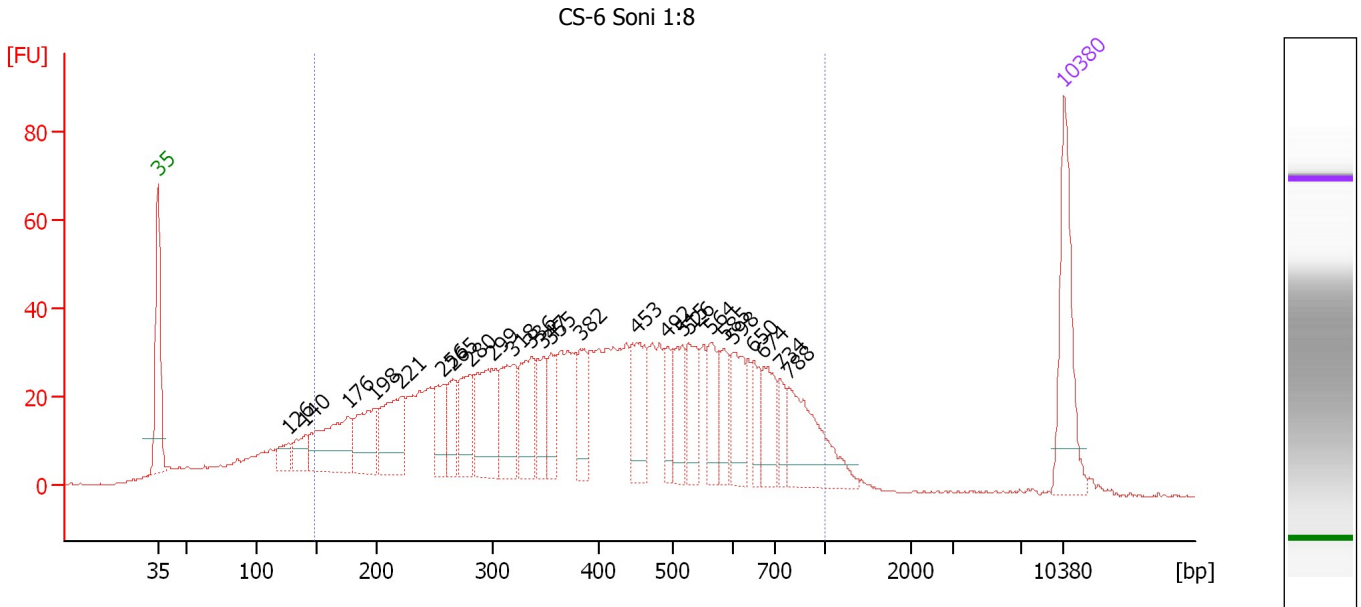
Region table for sample 8 : CS-5 Soni 1:8

| From [bp] | To [bp] | Average Size [bp] | Molarity [pmol/l] | Conc. [pg/μl] | Corr. Area | % of Total | Size distribution in CV [%] | Color |
|-----------|---------|-------------------|-------------------|---------------|------------|------------|-----------------------------|-------|
| 136 | 1,000 | 396 | 8,023.7 | 1,582.44 | 1,424.8 | 89 | 42.7 | Blue |

Assay Class: High Sensitivity DNA Assay
 Data Path: C:\...ents and Settings\Bioanalyzer\2012-08-29\2012-08-29_004.xad

Created: 8/29/2012 2:03:56 PM
 Modified: 8/29/2012 2:46:45 PM

Electropherogram Summary Continued ...



Overall Results for sample 9 : CS-6 Soni 1:8

Number of peaks found: 25 Corr. Area 1: 1,400.6
 Noise: 0.1

Peak table for sample 9 : CS-6 Soni 1:8

| Peak | Size [bp] | Conc. [pg/μl] | Molarity [pmol/l] | Observations |
|------|-----------|---------------|-------------------|--------------|
| 1 | 35 | 125.00 | 5,411.3 | Lower Marker |
| 2 | 126 | 22.61 | 271.4 | |
| 3 | 140 | 29.75 | 322.3 | |
| 4 | 176 | 102.07 | 879.0 | |
| 5 | 198 | 69.73 | 532.7 | |
| 6 | 221 | 88.92 | 609.0 | |
| 7 | 256 | 43.40 | 256.4 | |
| 8 | 265 | 39.70 | 226.6 | |
| 9 | 280 | 58.01 | 313.9 | |
| 10 | 299 | 97.40 | 493.6 | |
| 11 | 318 | 69.65 | 331.7 | |
| 12 | 336 | 67.58 | 304.6 | |
| 13 | 347 | 44.14 | 192.5 | |
| 14 | 355 | 34.08 | 145.5 | |
| 15 | 382 | 43.70 | 173.2 | |
| 16 | 453 | 65.46 | 219.1 | |
| 17 | 492 | 31.26 | 96.2 | |
| 18 | 515 | 42.25 | 124.2 | |
| 19 | 526 | 49.04 | 141.2 | |
| 20 | 564 | 35.54 | 95.5 | |
| 21 | 585 | 37.60 | 97.4 | |
| 22 | 598 | 47.61 | 120.6 | |
| 23 | 650 | 24.22 | 56.5 | |
| 24 | 674 | 45.85 | 103.0 | |
| 25 | 734 | 20.28 | 41.8 | |
| 26 | 788 | 89.09 | 171.4 | |

Assay Class: High Sensitivity DNA Assay
Data Path: C:\...ents and Settings\Bioanalyzer\2012-08-29\2012-08-29_004.xad

Created: 8/29/2012 2:03:56 PM
Modified: 8/29/2012 2:46:45 PM

Electropherogram Summary Continued ...**... Peak table for sample 9 : CS-6 Soni 1:8**

| Peak | Size [bp] | Conc. [pg/ μ l] | Molarity [pmol/l] | Observations |
|------|-----------|---------------------|-------------------|--------------|
| 27 | 10,380 | 75.00 | 10.9 | Upper Marker |

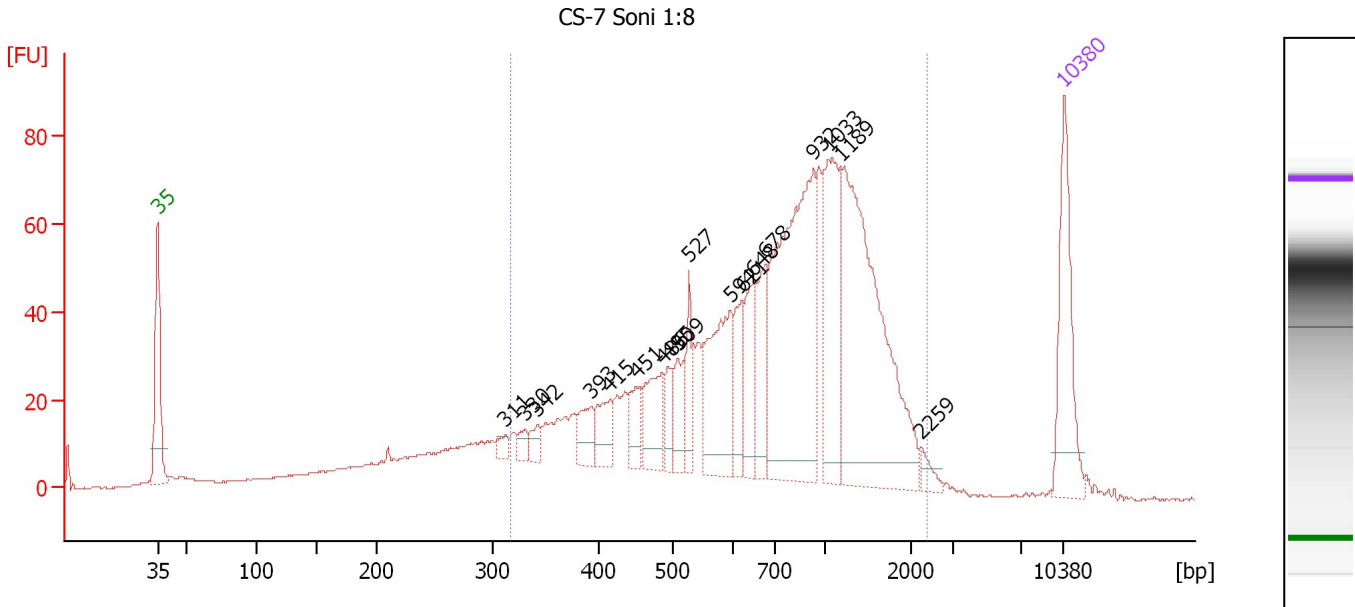
Region table for sample 9 : CS-6 Soni 1:8

| From [bp] | To [bp] | Average Size [bp] | Molarity [pmol/l] | Conc. [pg/ μ l] | Corr. Area | % of Total | Size distribution in CV [%] | Color |
|-----------|---------|-------------------|-------------------|---------------------|------------|------------|-----------------------------|---|
| 149 | 1,000 | 431 | 8,864.2 | 1,908.78 | 1,400.6 | 87 | 42.1 |  |

Assay Class: High Sensitivity DNA Assay
 Data Path: C:\...ents and Settings\Bioanalyzer\2012-08-29\2012-08-29_004.xad

Created: 8/29/2012 2:03:56 PM
 Modified: 8/29/2012 2:46:45 PM

Electropherogram Summary Continued ...



Overall Results for sample 10 : CS-7 Soni 1:8

Number of peaks found: 18 Corr. Area 1: 1,332.7
 Noise: 0.2

Peak table for sample 10 : CS-7 Soni 1:8

| Peak | Size [bp] | Conc. [pg/μl] | Molarity [pmol/l] | Observations |
|------|-----------|---------------|-------------------|--------------|
| 1 | 35 | 125.00 | 5,411.3 | Lower Marker |
| 2 | 311 | 9.32 | 45.4 | |
| 3 | 330 | 10.17 | 46.7 | |
| 4 | 342 | 13.36 | 59.2 | |
| 5 | 393 | 27.57 | 106.4 | |
| 6 | 415 | 31.79 | 116.2 | |
| 7 | 451 | 30.36 | 101.9 | |
| 8 | 486 | 51.66 | 161.1 | |
| 9 | 495 | 23.44 | 71.8 | |
| 10 | 509 | 34.11 | 101.6 | |
| 11 | 527 | 35.11 | 100.9 | |
| 12 | 594 | 103.25 | 263.2 | |
| 13 | 621 | 39.05 | 95.3 | |
| 14 | 648 | 51.06 | 119.3 | |
| 15 | 678 | 56.48 | 126.3 | |
| 16 | 932 | 260.42 | 423.5 | |
| 17 | 1,033 | 102.39 | 150.2 | |
| 18 | 1,189 | 271.69 | 346.2 | |
| 19 | 2,259 | 9.10 | 6.1 | |
| 20 | 10,380 | 75.00 | 10.9 | Upper Marker |

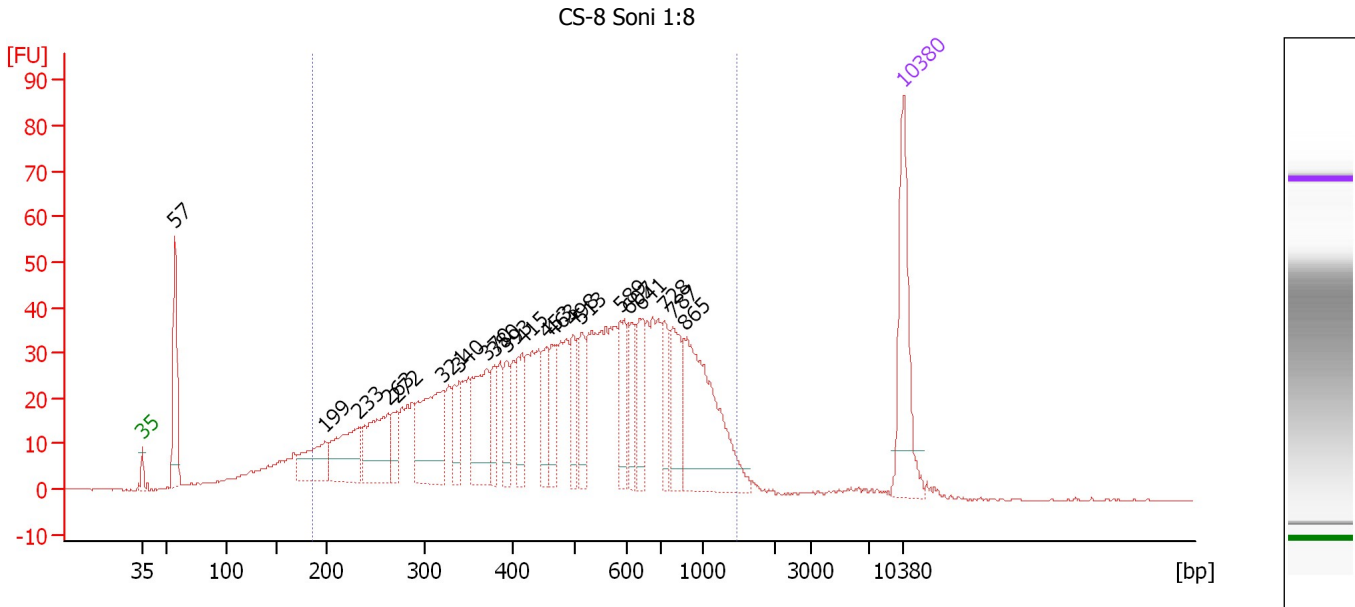
Region table for sample 10 : CS-7 Soni 1:8

| From [bp] | To [bp] | Average Size [bp] | Molarity [pmol/l] | Conc. [pg/μl] | Corr. Area | % of Total | Size distribution in CV [%] | Color |
|-----------|---------|-------------------|-------------------|---------------|------------|------------|-----------------------------|-------|
| 317 | 2,402 | 868 | 3,595.2 | 1,526.83 | 1,332.7 | 83 | 49.9 | Blue |

Assay Class: High Sensitivity DNA Assay
 Data Path: C:\...ents and Settings\Bioanalyzer\2012-08-29\2012-08-29_004.xad

Created: 8/29/2012 2:03:56 PM
 Modified: 8/29/2012 2:46:45 PM

Electropherogram Summary Continued ...



Overall Results for sample 11 : CS-8 Soni 1:8

Number of peaks found: 21 Corr. Area 1: 1,362.5
 Noise: 0.1

Peak table for sample 11 : CS-8 Soni 1:8

| Peak | Size [bp] | Conc. [pg/μl] | Molarity [pmol/l] | Observations |
|------|-----------|---------------|-------------------|--------------|
| 1 | 35 | 125.00 | 5,411.3 | Lower Marker |
| 2 | 57 | 100.83 | 2,695.4 | |
| 3 | 199 | 54.98 | 419.0 | |
| 4 | 233 | 78.55 | 510.8 | |
| 5 | 263 | 83.95 | 483.9 | |
| 6 | 272 | 24.84 | 138.3 | |
| 7 | 321 | 108.58 | 512.6 | |
| 8 | 340 | 38.23 | 170.5 | |
| 9 | 370 | 76.88 | 314.9 | |
| 10 | 380 | 32.04 | 127.9 | |
| 11 | 393 | 30.02 | 115.8 | |
| 12 | 415 | 40.09 | 146.5 | |
| 13 | 453 | 31.89 | 106.6 | |
| 14 | 463 | 37.23 | 121.9 | |
| 15 | 498 | 35.80 | 108.9 | |
| 16 | 513 | 38.19 | 112.8 | |
| 17 | 589 | 44.57 | 114.6 | |
| 18 | 607 | 31.64 | 79.0 | |
| 19 | 641 | 42.27 | 99.9 | |
| 20 | 728 | 33.67 | 70.1 | |
| 21 | 787 | 50.88 | 98.0 | |
| 22 | 865 | 145.77 | 255.5 | |
| 23 | 10,380 | 75.00 | 10.9 | Upper Marker |

Assay Class: High Sensitivity DNA Assay
Data Path: C:\...ents and Settings\Bioanalyzer\2012-08-29\2012-08-29_004.xad

Created: 8/29/2012 2:03:56 PM
Modified: 8/29/2012 2:46:45 PM

Electropherogram Summary Continued ...

... Region table for sample 11 : CS-8 Soni 1:8

| From [bp] | To [bp] | Average Size [bp] | Molarity [pmol/l] | Conc. [pg/μl] | Corr. Area | % of Total | Size distribution in CV [%] | Color |
|-----------|---------|-------------------|-------------------|---------------|------------|------------|-----------------------------|-------|
| 186 | 1,468 | 534 | 6,468.3 | 1,716.07 | 1,362.5 | 88 | 46.1 | ■ |

Assay Class: High Sensitivity DNA Assay
Data Path: C:\...ents and Settings\Bioanalyzer\2012-08-29\2012-08-29_004.xad

Created: 8/29/2012 2:03:56 PM
Modified: 8/29/2012 2:46:45 PM

Gel Image

