

Assay Class: High Sensitivity DNA Assay  
Data Path: C:\...ents and Settings\Bioanalyzer\2012-08-30\2012-08-30\_001.xad

Created: 8/30/2012 11:11:20 AM  
Modified: 8/30/2012 11:54:36 AM

**Electrophoresis File Run Summary**

Instrument Information:

Instrument Name: DE13701086      Firmware: C.01.069  
Serial#: DE13701086      Type: G2938B

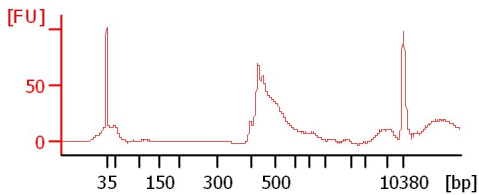
Assay Information:

Assay Origin Path: C:\Program Files\Agilent\2100 bioanalyzer\2100 expert\assays\dsDNA\High Sensitivity DNA.xsy  
Assay Class: High Sensitivity DNA Assay  
Version: 1.03  
Assay Comments: Copyright © 2003-2010 Agilent Technologies

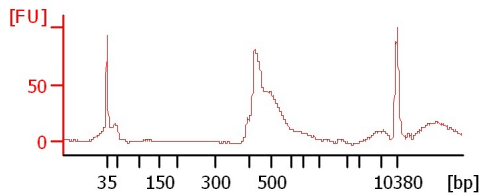
Chip Information:

Chip Lot #:  
Reagent Kit Lot #:  
Chip Comments:

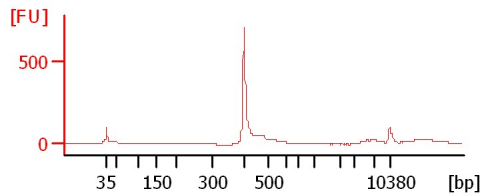
**IR50-3-Endo-1**



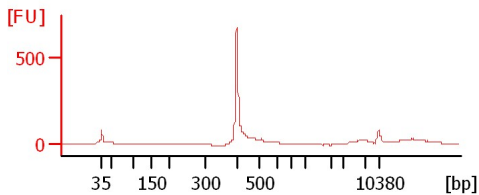
**IR50-3-Endo-2**



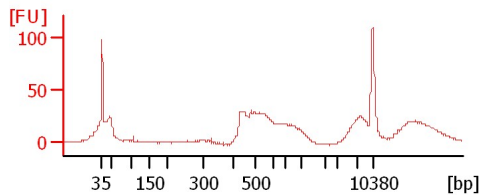
**M104-3-1mm-1**



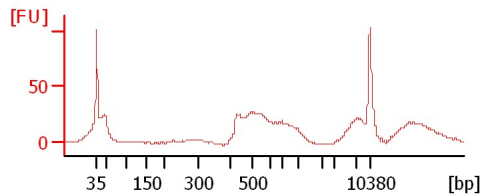
**M104-3-1mm-2**



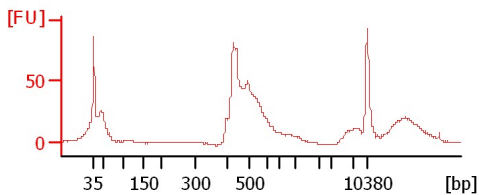
**M104-3-BF-1**



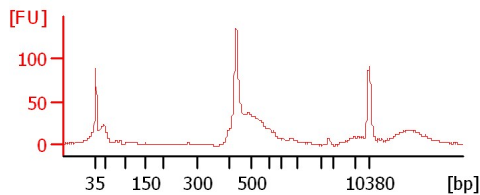
**M104-3-BF-2**



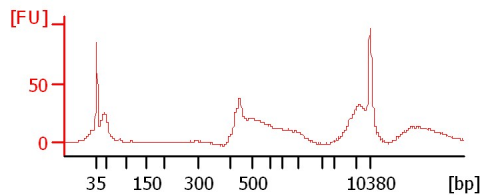
**M104-3-Endo-1**



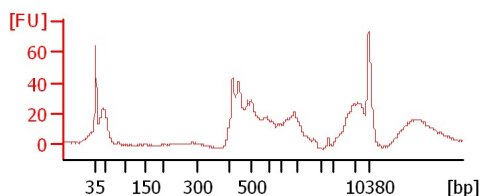
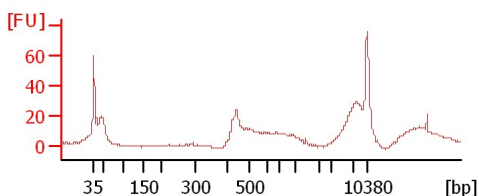
**M104-3-Endo-2**



**Nip-EP-4-1mm-1**



**Nip-EP-4-1mm-2**



Assay Class: High Sensitivity DNA Assay  
 Data Path: C:\...ents and Settings\Bioanalyzer\2012-08-30\2012-08-30\_001.xad

Created: 8/30/2012 11:11:20 AM  
 Modified: 8/30/2012 11:54:36 AM

**Electrophoresis File Run Summary (Chip Summary)**

Sample Name	Sample Comment	Rest. Digest	Status	Observation	Result Label	Result Color
IR50-3-Endo-1		<input type="checkbox"/>	✓			
IR50-3-Endo-2		<input type="checkbox"/>	✓			
M104-3-1mm-1		<input type="checkbox"/>	✓			
M104-3-1mm-2		<input type="checkbox"/>	✓			
M104-3-BF-1		<input type="checkbox"/>	✓			
M104-3-BF-2		<input type="checkbox"/>	✓			
M104-3-Endo-1		<input type="checkbox"/>	✓			
M104-3-Endo-2		<input type="checkbox"/>	✓			
Nip-EP-4-1mm-1		<input type="checkbox"/>	✓			
Nip-EP-4-1mm-2		<input type="checkbox"/>	✓			
Ladder		<input type="checkbox"/>	✓			

**Chip Lot #**

**Reagent Kit Lot #**

**Chip Comments :**

Assay Class: High Sensitivity DNA Assay  
Data Path: C:\...ents and Settings\Bioanalyzer\2012-08-30\2012-08-30\_001.xad

Created: 8/30/2012 11:11:20 AM  
Modified: 8/30/2012 11:54:36 AM

**Electrophoresis Assay Details**

**General Analysis Settings**

Number of Available Sample and Ladder Wells (Max.) : 12  
Minimum Visible Range [s] : 32  
Maximum Visible Range [s] : 138  
Start Analysis Time Range [s] : 33  
End Analysis Time Range [s] : 137.5  
Ladder Concentration [pg/μl] : 1950  
Uses Standard Area for Ladder Fragments  
Lower Marker Concentration [pg/μl] : 125  
Upper Marker Concentration [pg/μl] : 75  
Used Upper Marker for Quantitation  
Standard Curve Fit is Point to Point  
Show Data Aligned to Lower and Upper Marker

**Integrator Settings**

Integration Start Time [s] : 33.05  
Integration End Time [s] : 137  
Slope Threshold : 0.8  
Height Threshold [FU] : 5  
Area Threshold : 0.1  
Width Threshold [s] : 0.6  
Baseline Plateau [s] : 0.5

**Filter Settings**

Filter Width [s] : 0.5  
Polynomial Order : 4

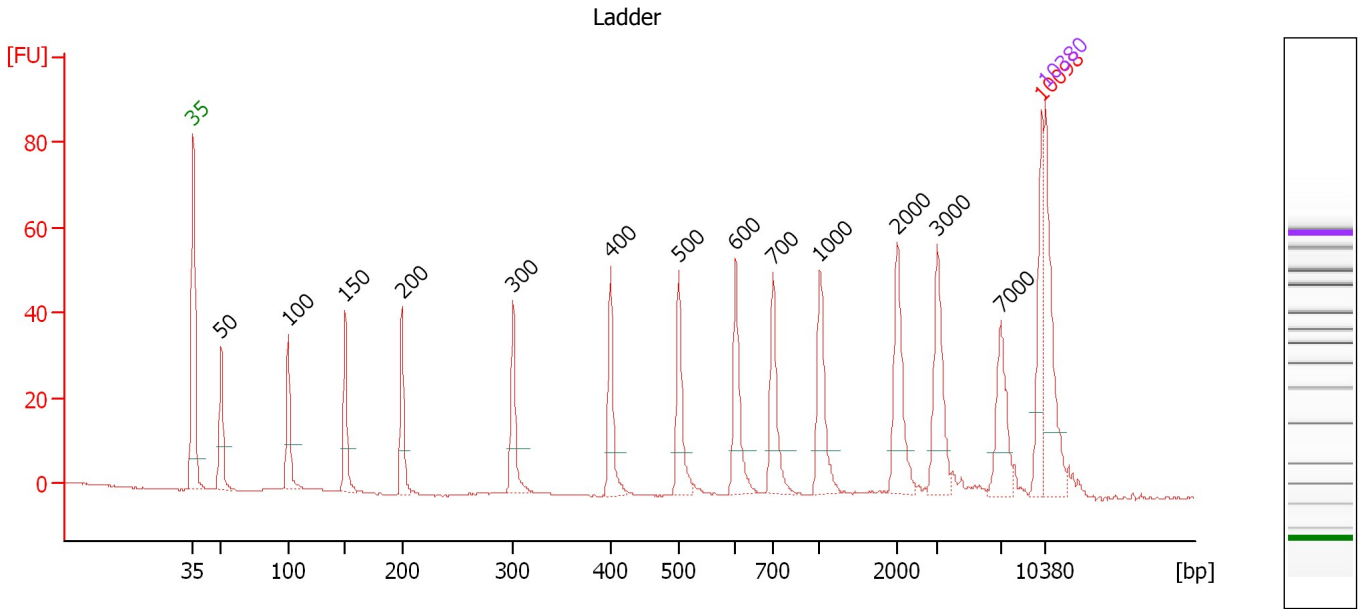
**Ladder**

Ladder Peak	Size	Area
1	35	160
2	50	210
3	100	208
4	150	221
5	200	242
6	300	270
7	400	305
8	500	306
9	600	336
10	700	321
11	1000	366
12	2000	413
13	3000	411
14	7000	400
15	10380	214

Assay Class: High Sensitivity DNA Assay  
 Data Path: C:\...ents and Settings\Bioanalyzer\2012-08-30\2012-08-30\_001.xad

Created: 8/30/2012 11:11:20 AM  
 Modified: 8/30/2012 11:54:36 AM

**Electropherogram Summary**



**Overall Results for Ladder**

Noise: 0.2

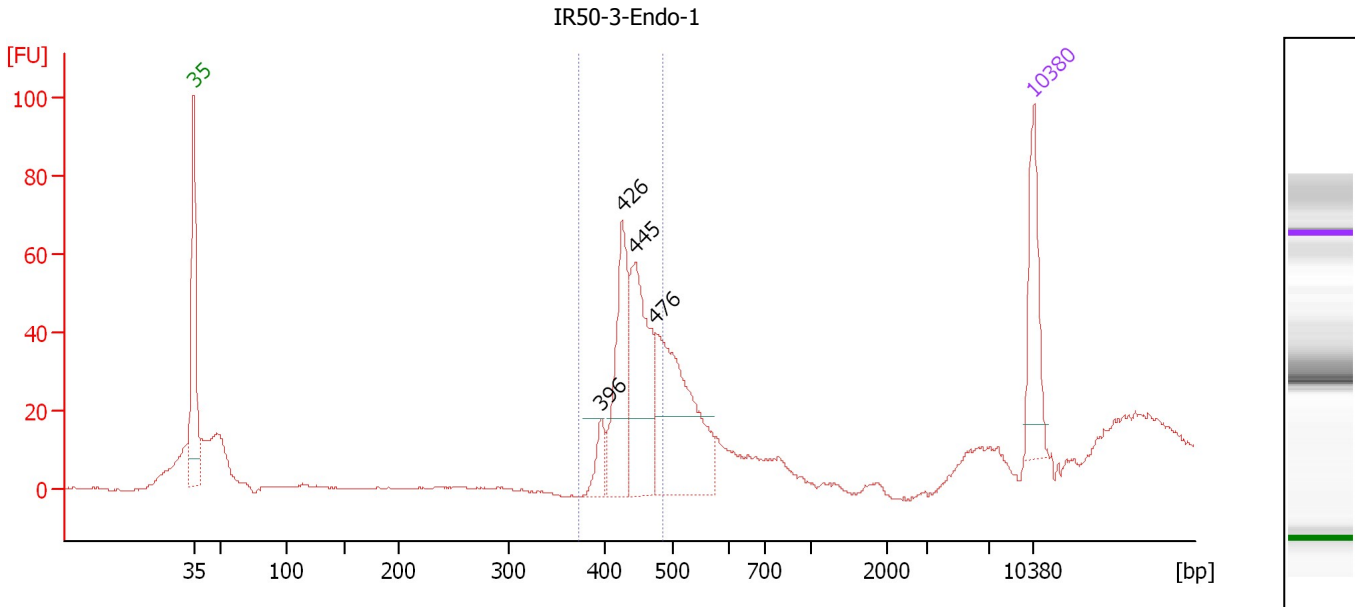
**Peak table for Ladder**

Peak	Size [bp]	Conc. [pg/μl]	Molarity [pmol/l]	Observations
1	35	125.00	5,411.3	Lower Marker
2	50	150.00	4,545.5	Ladder Peak
3	100	150.00	2,272.7	Ladder Peak
4	150	150.00	1,515.2	Ladder Peak
5	200	150.00	1,136.4	Ladder Peak
6	300	150.00	757.6	Ladder Peak
7	400	150.00	568.2	Ladder Peak
8	500	150.00	454.5	Ladder Peak
9	600	150.00	378.8	Ladder Peak
10	700	150.00	324.7	Ladder Peak
11	1,000	150.00	227.3	Ladder Peak
12	2,000	150.00	113.6	Ladder Peak
13	3,000	150.00	75.8	Ladder Peak
14	7,000	150.00	32.5	Ladder Peak
15	10,098	0.00	0.0	excluded peak
16	10,380	75.00	10.9	Upper Marker

Assay Class: High Sensitivity DNA Assay  
 Data Path: C:\...ents and Settings\Bioanalyzer\2012-08-30\2012-08-30\_001.xad

Created: 8/30/2012 11:11:20 AM  
 Modified: 8/30/2012 11:54:36 AM

**Electropherogram Summary Continued ...**



**Setpoint Deviations for sample 1 : IR50-3-Endo-1**

Height Threshold [FU] : 20

**Overall Results for sample 1 : IR50-3-Endo-1**

Number of peaks found: 4                      Corr. Area 1: 246.7  
 Noise: 0.2

**Peak table for sample 1 : IR50-3-Endo-1**

Peak	Size [bp]	Conc. [pg/μl]	Molarity [pmol/l]	Observations
1	35	125.00	5,411.3	Lower Marker
2	396	30.75	117.6	
3	426	150.92	537.3	
4	445	193.00	656.6	
5	476	247.18	787.6	
6	10,380	75.00	10.9	Upper Marker

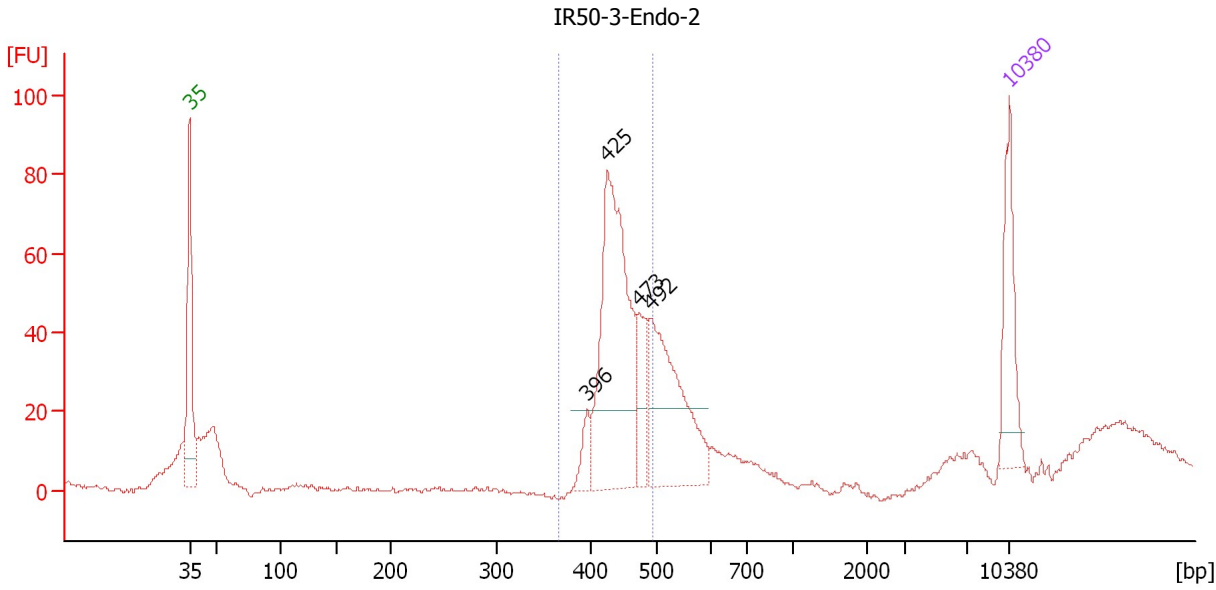
**Region table for sample 1 : IR50-3-Endo-1**

From [bp]	To [bp]	Average Size [bp]	Molarity [pmol/l]	Conc. [pg/μl]	Corr. Area	% of Total	Size distribution in CV [%]	Color
374	486	443	1,132.2	330.76	246.7	51	5.1	Blue

Assay Class: High Sensitivity DNA Assay  
 Data Path: C:\...ents and Settings\Bioanalyzer\2012-08-30\2012-08-30\_001.xad

Created: 8/30/2012 11:11:20 AM  
 Modified: 8/30/2012 11:54:36 AM

**Electropherogram Summary Continued ...**



**Setpoint Deviations for sample 2 : IR50-3-Endo-2**

Height Threshold [FU] : 20

**Overall Results for sample 2 : IR50-3-Endo-2**

Number of peaks found: 4                      Corr. Area 1: 344.0  
 Noise: 0.6

**Peak table for sample 2 : IR50-3-Endo-2**

Peak	Size [bp]	Conc. [pg/μl]	Molarity [pmol/l]	Observations
1	35	125.00	5,411.3	Lower Marker
2	396	29.01	111.0	
3	425	353.14	1,258.8	
4	473	60.91	195.1	
5	492	218.12	671.1	
6	10,380	75.00	10.9	Upper Marker

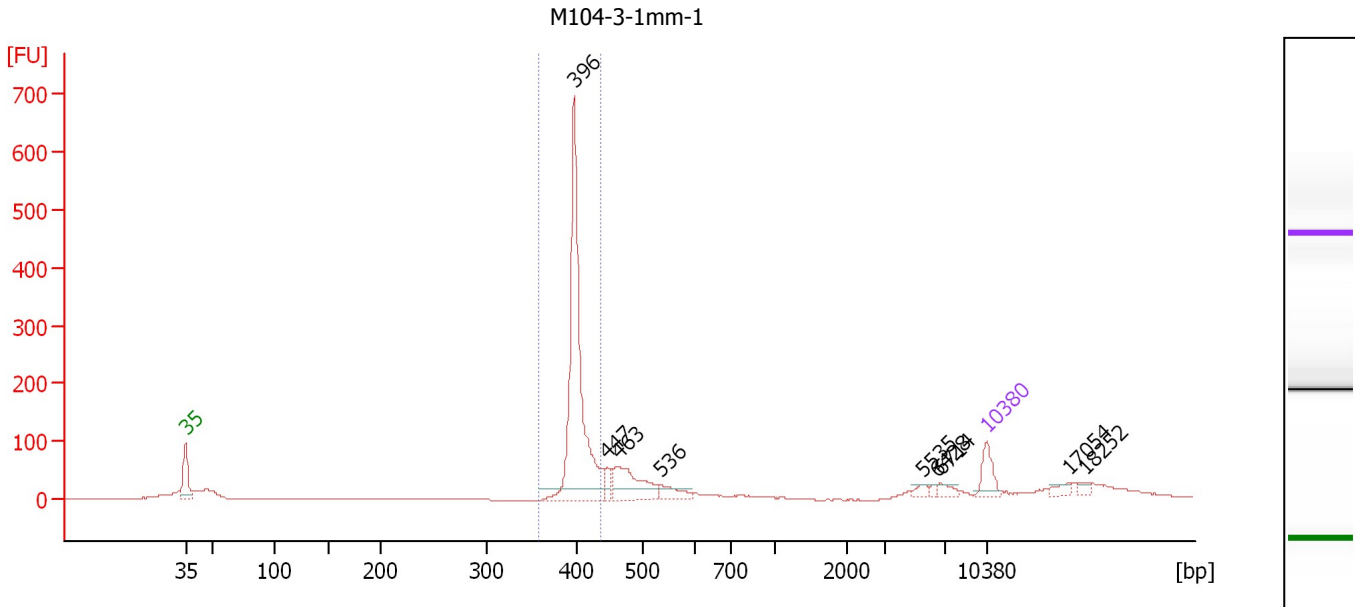
**Region table for sample 2 : IR50-3-Endo-2**

From [bp]	To [bp]	Average Size [bp]	Molarity [pmol/l]	Conc. [pg/μl]	Corr. Area	% of Total	Size distribution in CV [%]	Color
367	495	445	1,493.0	437.76	344.0	53	5.8	Blue

Assay Class: High Sensitivity DNA Assay  
 Data Path: C:\...ents and Settings\Bioanalyzer\2012-08-30\2012-08-30\_001.xad

Created: 8/30/2012 11:11:20 AM  
 Modified: 8/30/2012 11:54:36 AM

**Electropherogram Summary Continued ...**



**Setpoint Deviations for sample 3 : M104-3-1mm-1**

Height Threshold [FU] : 20

**Overall Results for sample 3 : M104-3-1mm-1**

Number of peaks found: 9                      Corr. Area 1: 892.1  
 Noise: 0.4

**Peak table for sample 3 : M104-3-1mm-1**

Peak	Size [bp]	Conc. [pg/µl]	Molarity [pmol/l]	Observations
1	35	125.00	5,411.3	Lower Marker
2	396	1,105.63	4,228.0	
3	447	49.27	167.0	
4	463	247.40	810.1	
5	536	69.49	196.5	
6	5,535	23.75	6.5	
7	6,428	12.00	2.8	
8	6,714	28.39	6.4	
9	10,380	75.00	10.9	Upper Marker
10	17,054	0.00	0.0	
11	18,252	0.00	0.0	

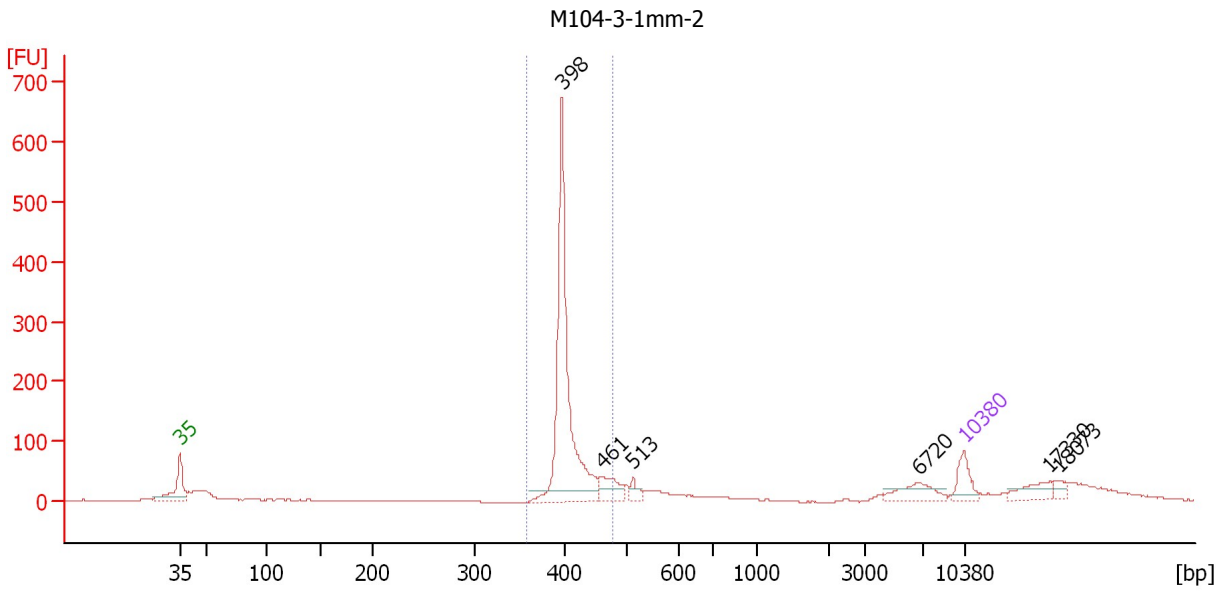
**Region table for sample 3 : M104-3-1mm-1**

From [bp]	To [bp]	Average Size [bp]	Molarity [pmol/l]	Conc. [pg/µl]	Corr. Area	% of Total	Size distribution in CV [%]	Color
357	435	401	3,891.7	1,028.32	892.1	54	2.6	Blue

Assay Class: High Sensitivity DNA Assay  
 Data Path: C:\...ents and Settings\Bioanalyzer\2012-08-30\2012-08-30\_001.xad

Created: 8/30/2012 11:11:20 AM  
 Modified: 8/30/2012 11:54:36 AM

**Electropherogram Summary Continued ...**



**Setpoint Deviations for sample 4 : M104-3-1mm-2**

Height Threshold [FU] : 20

**Overall Results for sample 4 : M104-3-1mm-2**

Number of peaks found: 6                      Corr. Area 1: 984.2  
 Noise: 0.5

**Peak table for sample 4 : M104-3-1mm-2**

Peak	Size [bp]	Conc. [pg/μl]	Molarity [pmol/l]	Observations
1	35	125.00	5,411.3	Lower Marker
2	398	1,098.63	4,185.4	
3	461	112.64	370.0	
4	513	42.30	125.1	
5	6,720	88.17	19.9	
6	10,380	75.00	10.9	Upper Marker
7	17,330	0.00	0.0	
8	18,073	0.00	0.0	

**Region table for sample 4 : M104-3-1mm-2**

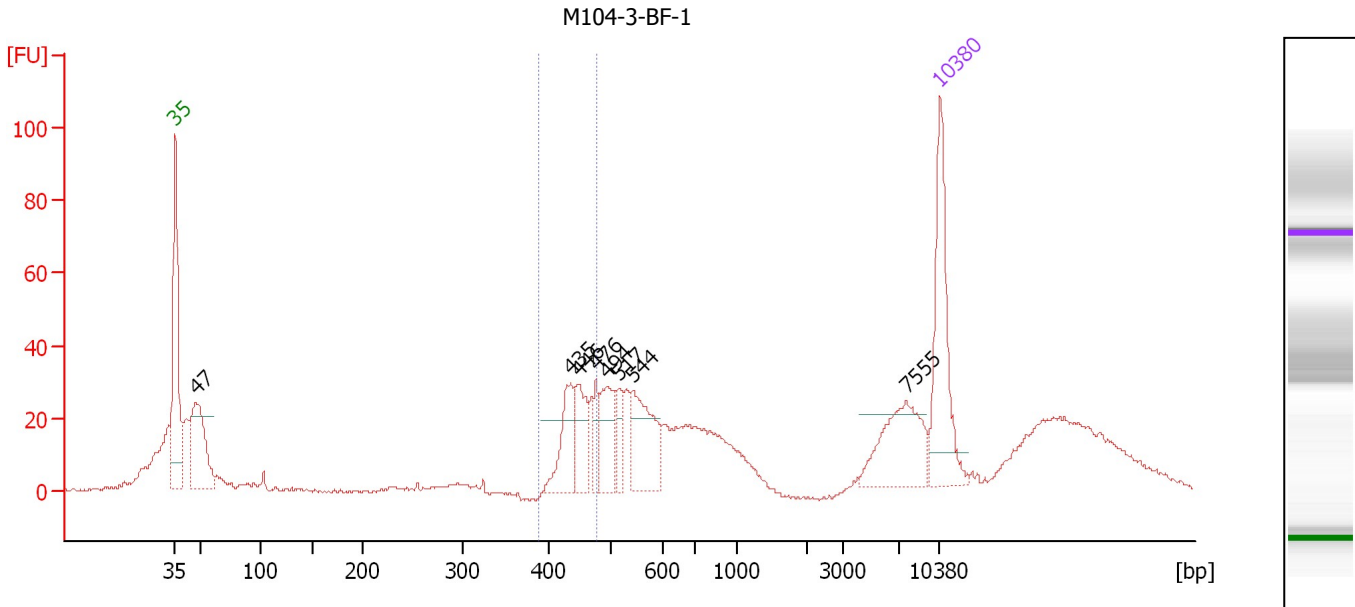
From [bp]	To [bp]	Average Size [bp]	Molarity [pmol/l]	Conc. [pg/μl]	Corr. Area	% of Total	Size distribution in CV [%]	Color
358	477	408	4,184.2	1,124.42	984.2	61	5.0	Blue



Assay Class: High Sensitivity DNA Assay  
 Data Path: C:\...ents and Settings\Bioanalyzer\2012-08-30\2012-08-30\_001.xad

Created: 8/30/2012 11:11:20 AM  
 Modified: 8/30/2012 11:54:36 AM

**Electropherogram Summary Continued ...**



**Setpoint Deviations for sample 5 : M104-3-BF-1**

Height Threshold [FU] : 20

**Overall Results for sample 5 : M104-3-BF-1**

Number of peaks found: 8                      Corr. Area 1: 112.0  
 Noise: 0.5

**Peak table for sample 5 : M104-3-BF-1**

Peak	Size [bp]	Conc. [pg/μl]	Molarity [pmol/l]	Observations
1	35	125.00	5,411.3	Lower Marker
2	47	108.98	3,497.2	
3	435	47.37	165.0	
4	446	39.98	135.7	
5	476	19.77	62.9	
6	494	42.33	129.8	
7	517	18.95	55.5	
8	544	66.72	185.8	
9	7,555	61.40	12.3	
10	10,380	75.00	10.9	Upper Marker

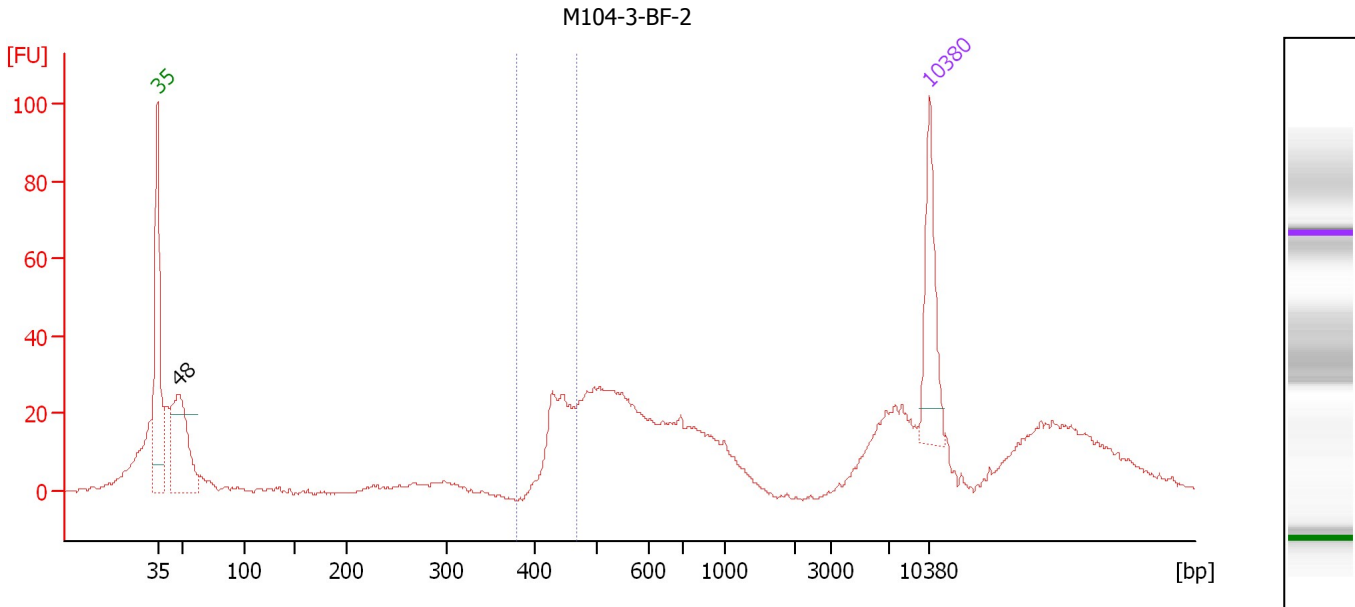
**Region table for sample 5 : M104-3-BF-1**

From [bp]	To [bp]	Average Size [bp]	Molarity [pmol/l]	Conc. [pg/μl]	Corr. Area	% of Total	Size distribution in CV [%]	Color
387	476	445	339.0	99.48	112.0	13	4.1	Blue

Assay Class: High Sensitivity DNA Assay  
 Data Path: C:\...ents and Settings\Bioanalyzer\2012-08-30\2012-08-30\_001.xad

Created: 8/30/2012 11:11:20 AM  
 Modified: 8/30/2012 11:54:36 AM

**Electropherogram Summary Continued ...**



**Setpoint Deviations for sample 6 : M104-3-BF-2**

Height Threshold [FU] : 20

**Overall Results for sample 6 : M104-3-BF-2**

Number of peaks found: 1                      Corr. Area 1: 86.0  
 Noise: 0.5

**Peak table for sample 6 : M104-3-BF-2**

Peak	Size [bp]	Conc. [pg/μl]	Molarity [pmol/l]	Observations
1	35	125.00	5,411.3	Lower Marker
2	48	194.21	6,163.5	
3	10,380	75.00	10.9	Upper Marker

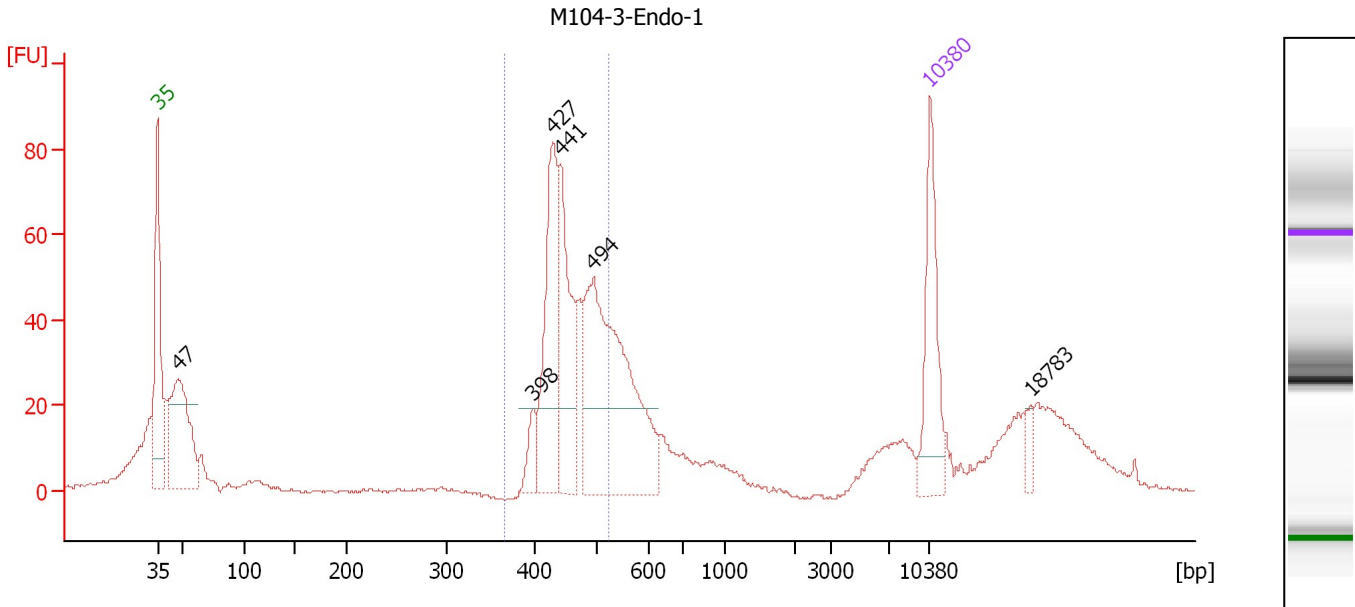
**Region table for sample 6 : M104-3-BF-2**

From [bp]	To [bp]	Average Size [bp]	Molarity [pmol/l]	Conc. [pg/μl]	Corr. Area	% of Total	Size distribution in CV [%]	Color
380	465	438	386.6	111.67	86.0	9	3.7	Blue

Assay Class: High Sensitivity DNA Assay  
 Data Path: C:\...ents and Settings\Bioanalyzer\2012-08-30\2012-08-30\_001.xad

Created: 8/30/2012 11:11:20 AM  
 Modified: 8/30/2012 11:54:36 AM

**Electropherogram Summary Continued ...**



**Setpoint Deviations for sample 7 : M104-3-Endo-1**

Height Threshold [FU] : 20

**Overall Results for sample 7 : M104-3-Endo-1**

Number of peaks found: 6                      Corr. Area 1: 434.5  
 Noise: 0.5

**Peak table for sample 7 : M104-3-Endo-1**

Peak	Size [bp]	Conc. [pg/μl]	Molarity [pmol/l]	Observations
1	35	125.00	5,411.3	Lower Marker
2	47	184.67	5,913.7	
3	398	23.59	89.9	
4	427	149.22	529.2	
5	441	124.30	427.3	
6	494	300.26	921.0	
7	10,380	75.00	10.9	Upper Marker
8	18,783	0.00	0.0	

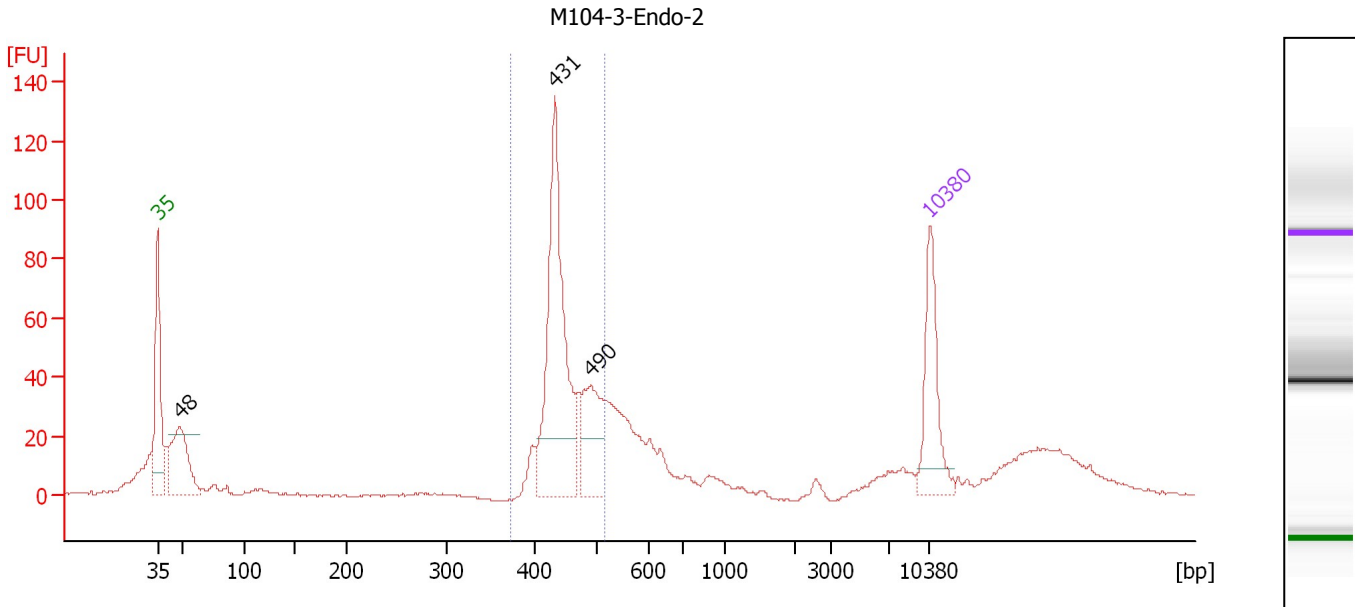
**Region table for sample 7 : M104-3-Endo-1**

From [bp]	To [bp]	Average Size [bp]	Molarity [pmol/l]	Conc. [pg/μl]	Corr. Area	% of Total	Size distribution in CV [%]	Color
365	524	456	1,573.4	471.20	434.5	41	7.5	Blue

Assay Class: High Sensitivity DNA Assay  
 Data Path: C:\...ents and Settings\Bioanalyzer\2012-08-30\2012-08-30\_001.xad

Created: 8/30/2012 11:11:20 AM  
 Modified: 8/30/2012 11:54:36 AM

**Electropherogram Summary Continued ...**



**Setpoint Deviations for sample 8 : M104-3-Endo-2**

Height Threshold [FU] : 20

**Overall Results for sample 8 : M104-3-Endo-2**

Number of peaks found: 3                      Corr. Area 1: 399.9  
 Noise: 0.3

**Peak table for sample 8 : M104-3-Endo-2**

Peak	Size [bp]	Conc. [pg/μl]	Molarity [pmol/l]	Observations
1	35	125.00	5,411.3	Lower Marker
2	48	135.40	4,264.9	
3	431	281.48	988.4	
4	490	97.32	301.1	
5	10,380	75.00	10.9	Upper Marker

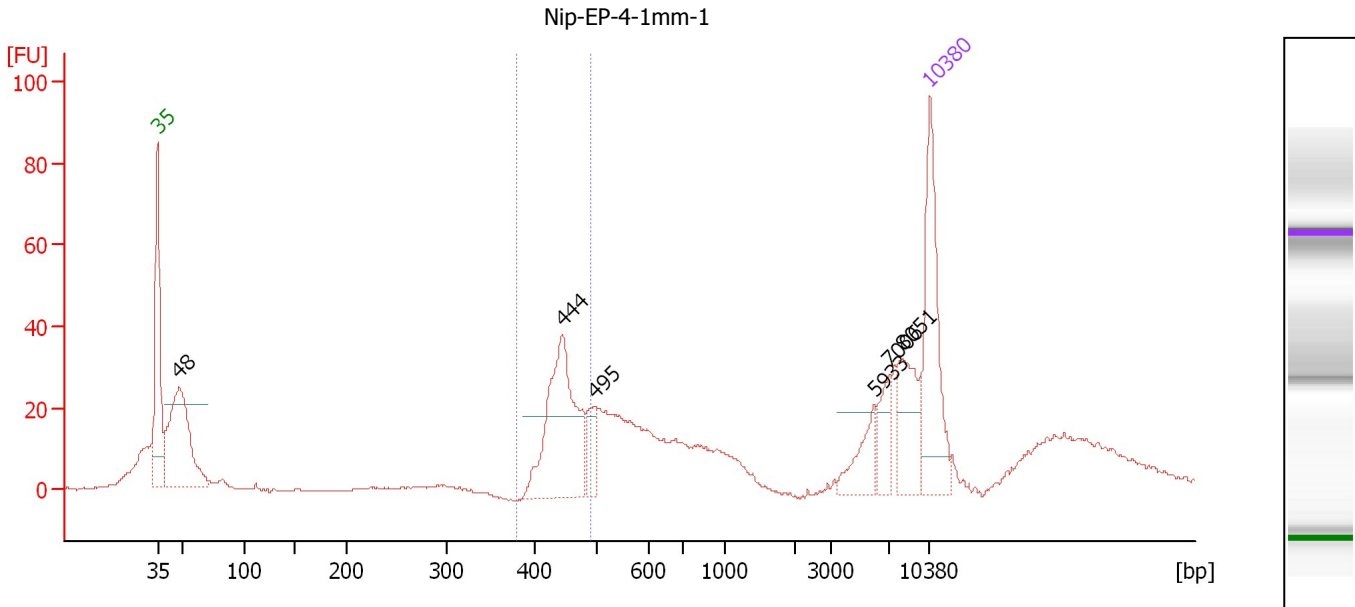
**Region table for sample 8 : M104-3-Endo-2**

From [bp]	To [bp]	Average Size [bp]	Molarity [pmol/l]	Conc. [pg/μl]	Corr. Area	% of Total	Size distribution in CV [%]	Color
372	512	447	1,360.6	400.57	399.9	43	6.6	Blue

Assay Class: High Sensitivity DNA Assay  
 Data Path: C:\...ents and Settings\Bioanalyzer\2012-08-30\2012-08-30\_001.xad

Created: 8/30/2012 11:11:20 AM  
 Modified: 8/30/2012 11:54:36 AM

**Electropherogram Summary Continued ...**



**Setpoint Deviations for sample 9 : Nip-EP-4-1mm-1**

Height Threshold [FU] : 20

**Overall Results for sample 9 : Nip-EP-4-1mm-1**

Number of peaks found: 6                      Corr. Area 1: 139.9  
 Noise: 0.3

**Peak table for sample 9 : Nip-EP-4-1mm-1**

Peak	Size [bp]	Conc. [pg/μl]	Molarity [pmol/l]	Observations
1	35	125.00	5,411.3	Lower Marker
2	48	163.98	5,219.1	
3	444	135.58	462.5	
4	495	26.47	81.0	
5	5,933	24.98	6.4	
6	7,006	19.93	4.3	
7	8,051	41.68	7.8	
8	10,380	75.00	10.9	Upper Marker

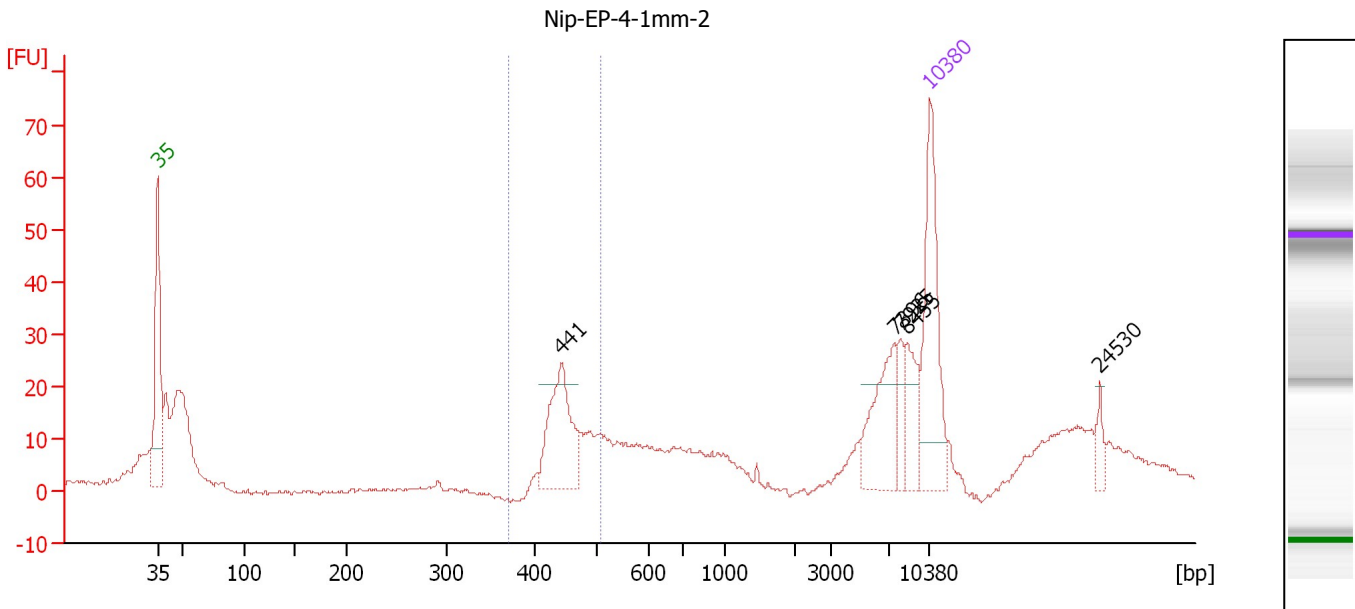
**Region table for sample 9 : Nip-EP-4-1mm-1**

From [bp]	To [bp]	Average Size [bp]	Molarity [pmol/l]	Conc. [pg/μl]	Corr. Area	% of Total	Size distribution in CV [%]	Color
378	489	445	445.2	130.75	139.9	18	5.0	Blue

Assay Class: High Sensitivity DNA Assay  
 Data Path: C:\...ents and Settings\Bioanalyzer\2012-08-30\2012-08-30\_001.xad

Created: 8/30/2012 11:11:20 AM  
 Modified: 8/30/2012 11:54:36 AM

**Electropherogram Summary Continued ...**



**Setpoint Deviations for sample 10 : Nip-EP-4-1mm-2**

Height Threshold [FU] : 20

**Overall Results for sample 10 : Nip-EP-4-1mm-2**

Number of peaks found: 5                      Corr. Area 1: 91.2  
 Noise: 0.3

**Peak table for sample 10 : Nip-EP-4-1mm-2**

Peak	Size [bp]	Conc. [pg/μl]	Molarity [pmol/l]	Observations
1	35	125.00	5,411.3	Lower Marker
2	441	80.09	275.0	
3	7,396	53.34	10.9	
4	7,925	15.36	2.9	
5	8,455	27.90	5.0	
6	10,380	75.00	10.9	Upper Marker
7	24,530	0.00	0.0	

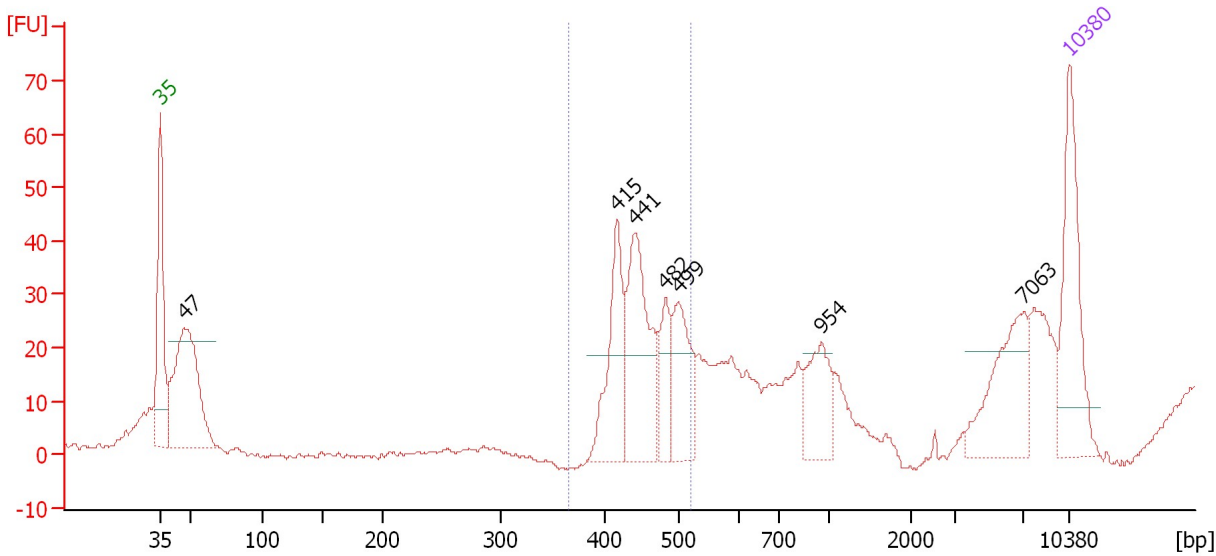
**Region table for sample 10 : Nip-EP-4-1mm-2**

From [bp]	To [bp]	Average Size [bp]	Molarity [pmol/l]	Conc. [pg/μl]	Corr. Area	% of Total	Size distribution in CV [%]	Color
369	508	452	363.1	108.23	91.2	17	5.9	Blue

Assay Class: High Sensitivity DNA Assay  
 Data Path: C:\...ents and Settings\Bioanalyzer\2012-08-30\2012-08-30\_001.xad

Created: 8/30/2012 11:11:20 AM  
 Modified: 8/30/2012 11:54:36 AM

**Electropherogram Summary Continued ...**



**Setpoint Deviations for sample 11 :**

Height Threshold [FU] : 20

**Overall Results for sample 11 :**

Number of peaks found: 7                      Corr. Area 1: 234.3  
 Noise: 0.4

**Peak table for sample 11 :**

Peak	Size [bp]	Conc. [pg/μl]	Molarity [pmol/l]	Observations
1	35	125.00	5,411.3	Lower Marker
2	47	186.53	5,982.7	
3	415	86.60	316.0	
4	441	118.24	406.5	
5	482	39.92	125.4	
6	499	67.84	205.8	
7	954	47.46	75.4	
8	7,063	68.91	14.8	
9	10,380	75.00	10.9	Upper Marker

**Region table for sample 11 :**

From [bp]	To [bp]	Average Size [bp]	Molarity [pmol/l]	Conc. [pg/μl]	Corr. Area	% of Total	Size distribution in CV [%]	Color
365	522	454	939.9	280.61	234.3	29	7.6	Blue

---

Assay Class: High Sensitivity DNA Assay  
Data Path: C:\...ents and Settings\Bioanalyzer\2012-08-30\2012-08-30\_001.xad

Created: 8/30/2012 11:11:20 AM  
Modified: 8/30/2012 11:54:36 AM

**Gel Image**