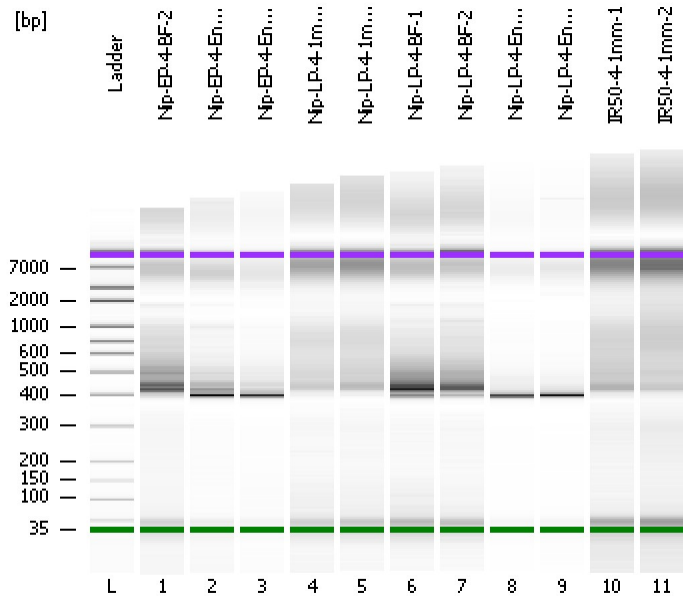


Assay Class: High Sensitivity DNA Assay
Data Path: C:\...ents and Settings\Bioanalyzer\2012-08-30\2012-08-30_002.xad

Created: 8/30/2012 11:56:12 AM
Modified: 8/30/2012 12:38:27 PM

Electrophoresis File Run Summary



Instrument Information:

Instrument Name: DE13701086 Firmware: C.01.069
Serial#: DE13701086 Type: G2938B

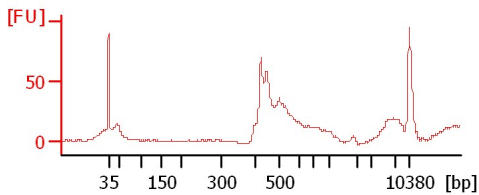
Assay Information:

Assay Origin Path: C:\Program Files\Agilent\2100 bioanalyzer\2100 expert\assays\dsDNA\High Sensitivity DNA.xsy
Assay Class: High Sensitivity DNA Assay
Version: 1.03
Assay Comments: Copyright © 2003-2010 Agilent Technologies

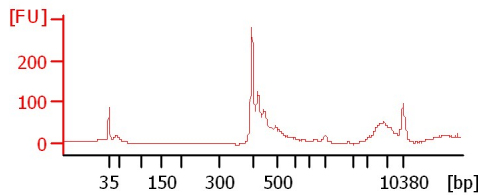
Chip Information:

Chip Lot #:
Reagent Kit Lot #:
Chip Comments:

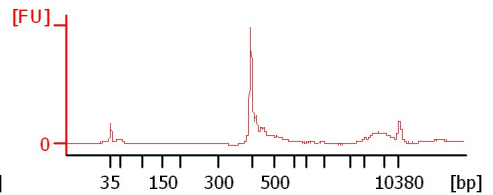
Nip-EP-4-BF-2



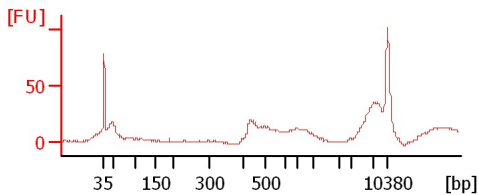
Nip-EP-4-Endo-1



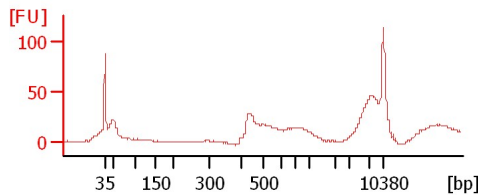
Nip-EP-4-Endo-2



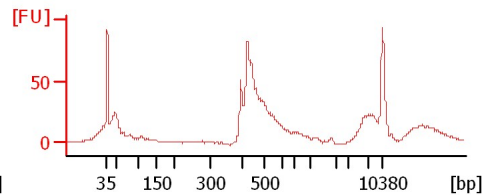
Nip-LP-4-1mm-1



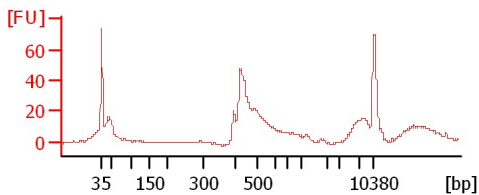
Nip-LP-4-1mm-2



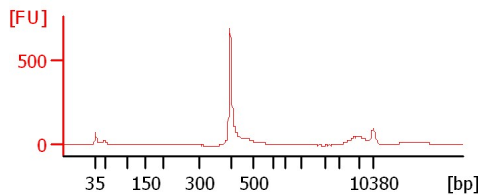
Nip-LP-4-BF-1



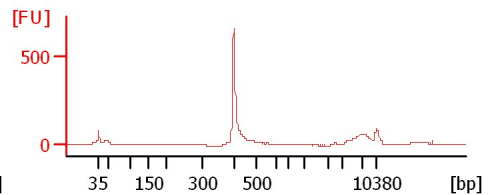
Nip-LP-4-BF-2



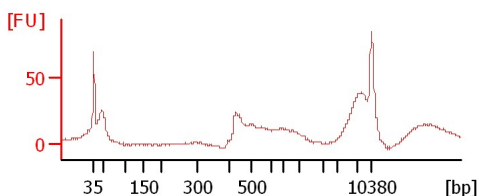
Nip-LP-4-Endo-1



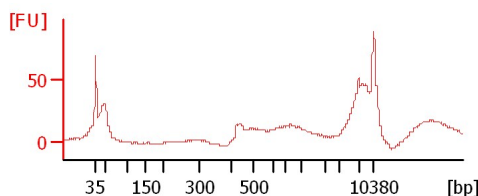
Nip-LP-4-Endo-2



IR50-4-1mm-1



IR50-4-1mm-2



Assay Class: High Sensitivity DNA Assay
Data Path: C:\...ents and Settings\Bioanalyzer\2012-08-30\2012-08-30_002.xad

Created: 8/30/2012 11:56:12 AM
Modified: 8/30/2012 12:38:27 PM

Electrophoresis File Run Summary (Chip Summary)

Sample Name	Sample Comment	Rest. Digest	Status	Observation	Result Label	Result Color
Nip-EP-4-BF-2		<input type="checkbox"/>	✓			
Nip-EP-4-Endo-1		<input type="checkbox"/>	✓			
Nip-EP-4-Endo-2		<input type="checkbox"/>	✓			
Nip-LP-4-1mm-1		<input type="checkbox"/>	✓			
Nip-LP-4-1mm-2		<input type="checkbox"/>	✓			
Nip-LP-4-BF-1		<input type="checkbox"/>	✓			
Nip-LP-4-BF-2		<input type="checkbox"/>	✓			
Nip-LP-4-Endo-1		<input type="checkbox"/>	✓			
Nip-LP-4-Endo-2		<input type="checkbox"/>	✓			
IR50-4-1mm-1		<input type="checkbox"/>	✓			
IR50-4-1mm-2		<input type="checkbox"/>	✓			
Ladder		<input type="checkbox"/>	✓			

Chip Lot #

Reagent Kit Lot #

Chip Comments :

Assay Class: High Sensitivity DNA Assay
Data Path: C:\...ents and Settings\Bioanalyzer\2012-08-30\2012-08-30_002.xad

Created: 8/30/2012 11:56:12 AM
Modified: 8/30/2012 12:38:27 PM

Electrophoresis Assay Details

General Analysis Settings

Number of Available Sample and Ladder Wells (Max.) : 12
Minimum Visible Range [s] : 32
Maximum Visible Range [s] : 138
Start Analysis Time Range [s] : 33
End Analysis Time Range [s] : 137.5
Ladder Concentration [pg/μl] : 1950
Uses Standard Area for Ladder Fragments
Lower Marker Concentration [pg/μl] : 125
Upper Marker Concentration [pg/μl] : 75
Used Upper Marker for Quantitation
Standard Curve Fit is Point to Point
Show Data Aligned to Lower and Upper Marker

Integrator Settings

Integration Start Time [s] : 33.05
Integration End Time [s] : 137
Slope Threshold : 0.8
Height Threshold [FU] : 5
Area Threshold : 0.1
Width Threshold [s] : 0.6
Baseline Plateau [s] : 0.5

Filter Settings

Filter Width [s] : 0.5
Polynomial Order : 4

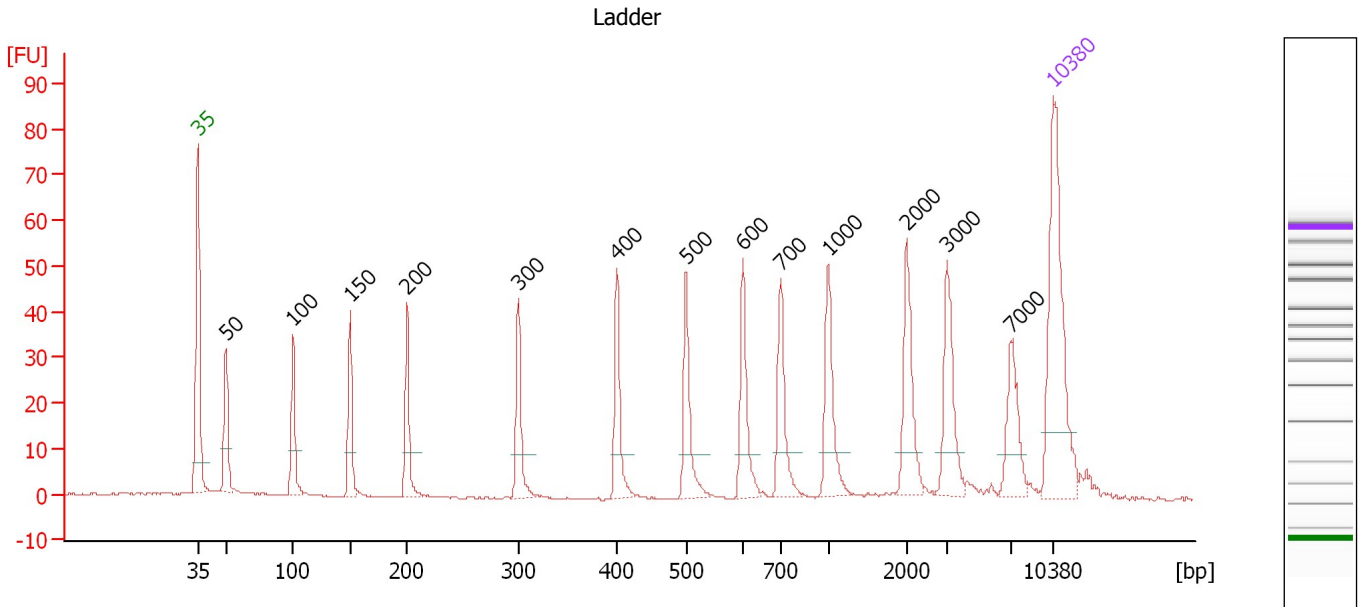
Ladder

Ladder Peak	Size	Area
1	35	160
2	50	210
3	100	208
4	150	221
5	200	242
6	300	270
7	400	305
8	500	306
9	600	336
10	700	321
11	1000	366
12	2000	413
13	3000	411
14	7000	400
15	10380	214

Assay Class: High Sensitivity DNA Assay
 Data Path: C:\...ents and Settings\Bioanalyzer\2012-08-30\2012-08-30_002.xad

Created: 8/30/2012 11:56:12 AM
 Modified: 8/30/2012 12:38:27 PM

Electropherogram Summary



Overall Results for Ladder

Noise: 0.2

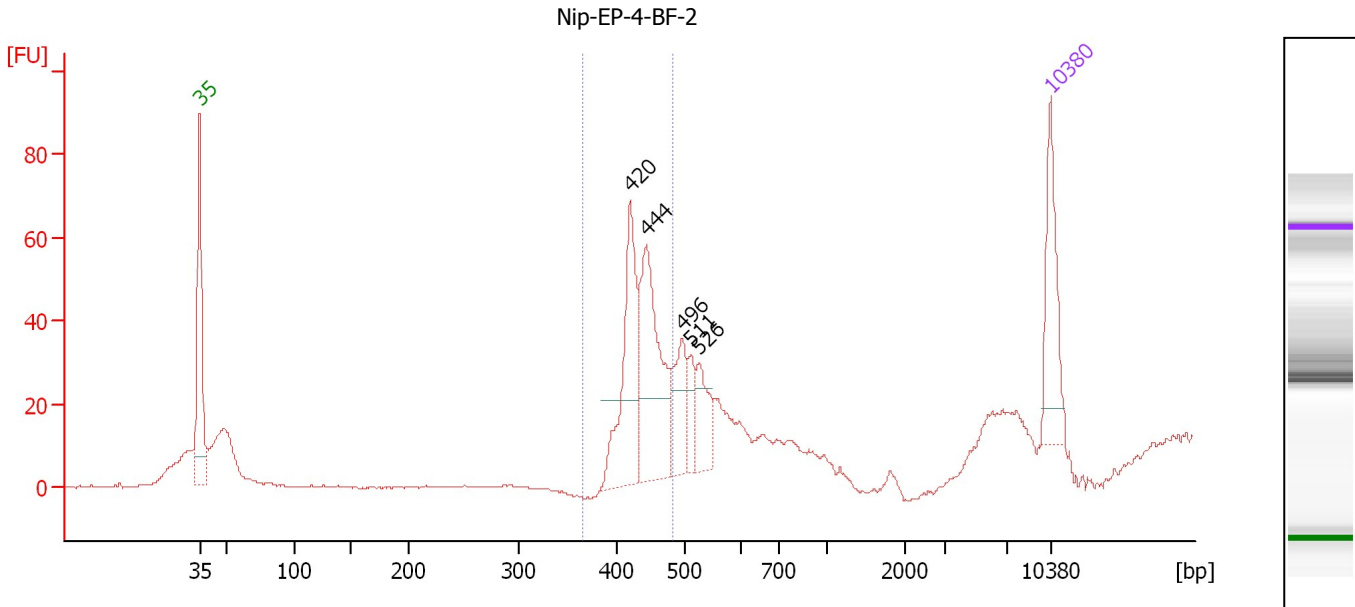
Peak table for Ladder

Peak	Size [bp]	Conc. [pg/μl]	Molarity [pmol/l]	Observations
1	35	125.00	5,411.3	Lower Marker
2	50	150.00	4,545.5	Ladder Peak
3	100	150.00	2,272.7	Ladder Peak
4	150	150.00	1,515.2	Ladder Peak
5	200	150.00	1,136.4	Ladder Peak
6	300	150.00	757.6	Ladder Peak
7	400	150.00	568.2	Ladder Peak
8	500	150.00	454.5	Ladder Peak
9	600	150.00	378.8	Ladder Peak
10	700	150.00	324.7	Ladder Peak
11	1,000	150.00	227.3	Ladder Peak
12	2,000	150.00	113.6	Ladder Peak
13	3,000	150.00	75.8	Ladder Peak
14	7,000	150.00	32.5	Ladder Peak
15	10,380	75.00	10.9	Upper Marker

Assay Class: High Sensitivity DNA Assay
 Data Path: C:\...ents and Settings\Bioanalyzer\2012-08-30\2012-08-30_002.xad

Created: 8/30/2012 11:56:12 AM
 Modified: 8/30/2012 12:38:27 PM

Electropherogram Summary Continued ...



Setpoint Deviations for sample 1 : Nip-EP-4-BF-2

Height Threshold [FU] : 20

Overall Results for sample 1 : Nip-EP-4-BF-2

Number of peaks found: 5 Corr. Area 1: 221.5
 Noise: 0.2

Peak table for sample 1 : Nip-EP-4-BF-2

Peak	Size [bp]	Conc. [pg/μl]	Molarity [pmol/l]	Observations
1	35	125.00	5,411.3	Lower Marker
2	420	173.42	625.0	
3	444	194.96	664.7	
4	496	65.77	200.8	
5	511	31.33	93.0	
6	526	52.89	152.4	
7	10,380	75.00	10.9	Upper Marker

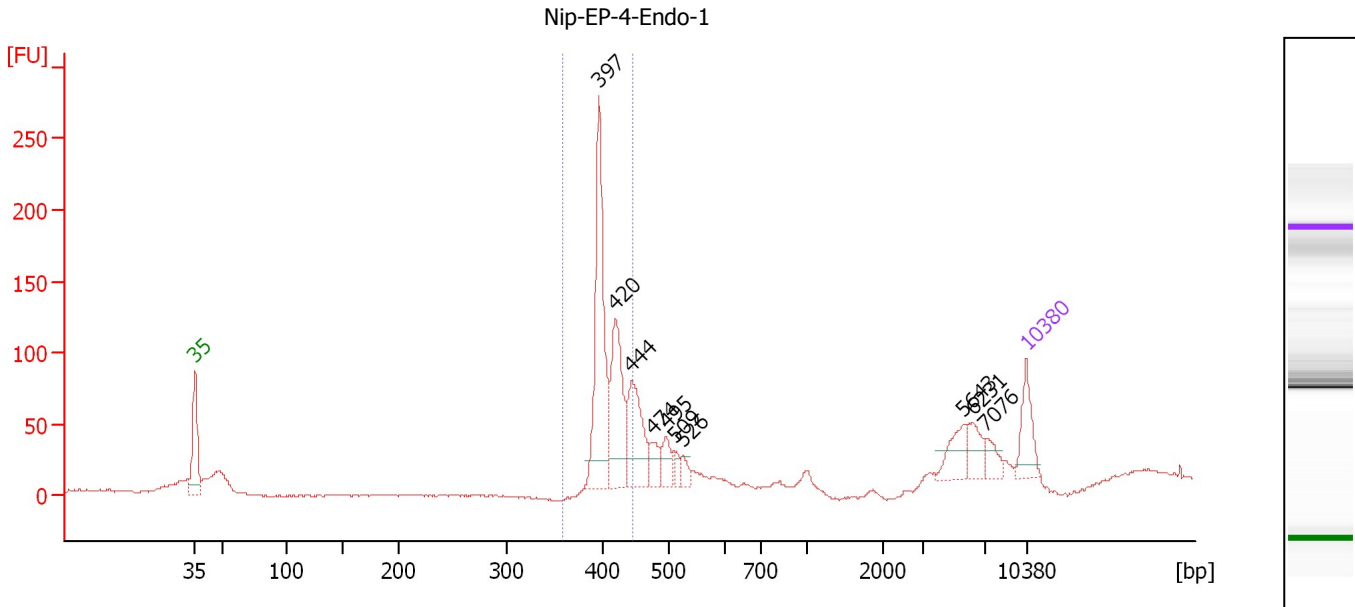
Region table for sample 1 : Nip-EP-4-BF-2

From [bp]	To [bp]	Average Size [bp]	Molarity [pmol/l]	Conc. [pg/μl]	Corr. Area	% of Total	Size distribution in CV [%]	Color
365	481	438	1,090.1	315.10	221.5	45	4.7	Blue

Assay Class: High Sensitivity DNA Assay
 Data Path: C:\...ents and Settings\Bioanalyzer\2012-08-30\2012-08-30_002.xad

Created: 8/30/2012 11:56:12 AM
 Modified: 8/30/2012 12:38:27 PM

Electropherogram Summary Continued ...



Setpoint Deviations for sample 2 : Nip-EP-4-Endo-1

Height Threshold [FU] : 20

Overall Results for sample 2 : Nip-EP-4-Endo-1

Number of peaks found: 10 Corr. Area 1: 497.4
 Noise: 0.7

Peak table for sample 2 : Nip-EP-4-Endo-1

Peak	Size [bp]	Conc. [pg/μl]	Molarity [pmol/l]	Observations
1	35	125.00	5,411.3	Lower Marker
2	397	440.18	1,679.0	
3	420	253.55	915.1	
4	444	200.41	683.4	
5	474	52.43	167.4	
6	495	56.29	172.3	
7	509	24.13	71.8	
8	526	26.31	75.8	
9	5,643	68.16	18.3	
10	6,231	54.17	13.2	
11	7,076	35.37	7.6	
12	10,380	75.00	10.9	Upper Marker

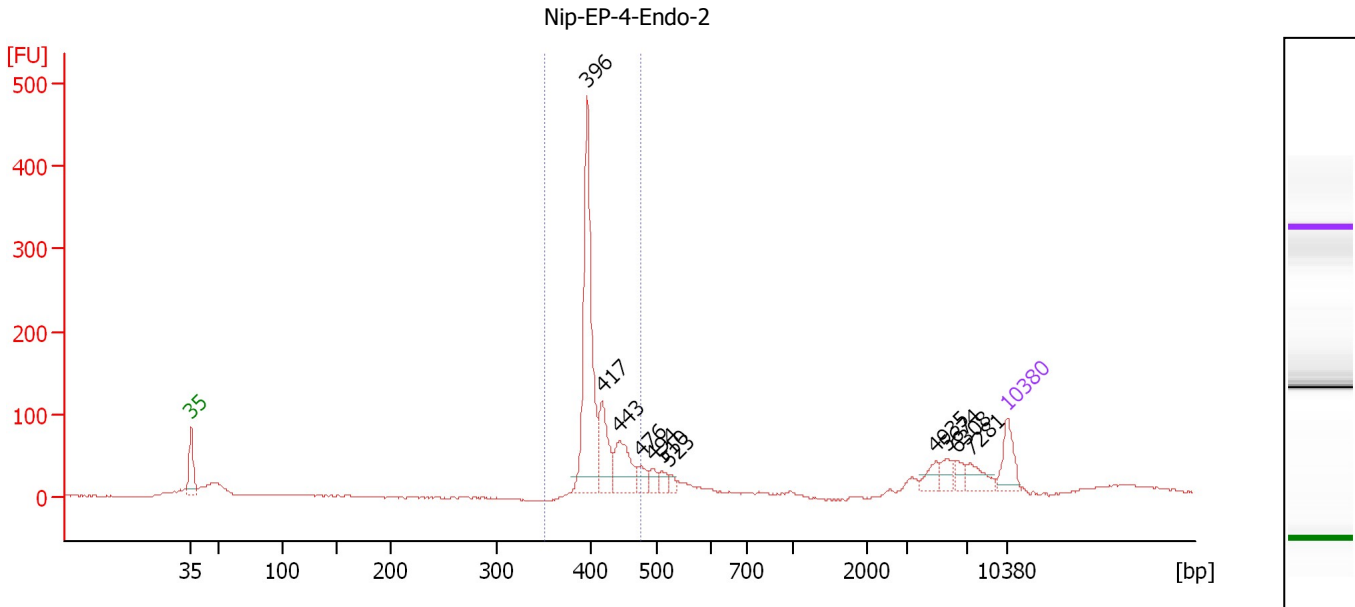
Region table for sample 2 : Nip-EP-4-Endo-1

From [bp]	To [bp]	Average Size [bp]	Molarity [pmol/l]	Conc. [pg/μl]	Corr. Area	% of Total	Size distribution in CV [%]	Color
359	445	410	2,690.1	727.04	497.4	52	3.8	Blue

Assay Class: High Sensitivity DNA Assay
 Data Path: C:\...ents and Settings\Bioanalyzer\2012-08-30\2012-08-30_002.xad

Created: 8/30/2012 11:56:12 AM
 Modified: 8/30/2012 12:38:27 PM

Electropherogram Summary Continued ...



Setpoint Deviations for sample 3 : Nip-EP-4-Endo-2

Height Threshold [FU] : 20

Overall Results for sample 3 : Nip-EP-4-Endo-2

Number of peaks found: 11 Corr. Area 1: 784.2
 Noise: 0.8

Peak table for sample 3 : Nip-EP-4-Endo-2

Peak	Size [bp]	Conc. [pg/μl]	Molarity [pmol/l]	Observations
1	35	125.00	5,411.3	Lower Marker
2	396	617.02	2,361.6	
3	417	159.88	581.3	
4	443	156.96	536.5	
5	476	45.59	145.3	
6	494	31.26	95.9	
7	510	30.23	89.9	
8	523	19.34	56.0	
9	4,935	40.33	12.4	
10	5,674	41.00	10.9	
11	6,308	29.65	7.1	
12	7,281	54.02	11.2	
13	10,380	75.00	10.9	Upper Marker

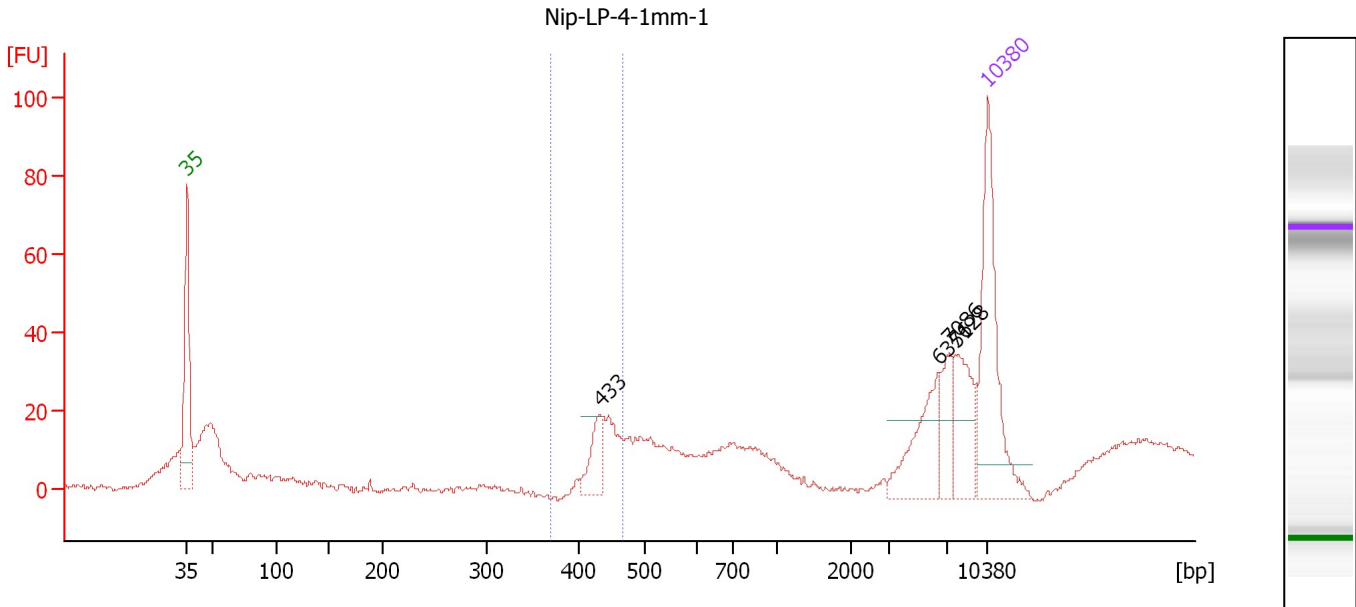
Region table for sample 3 : Nip-EP-4-Endo-2

From [bp]	To [bp]	Average Size [bp]	Molarity [pmol/l]	Conc. [pg/μl]	Corr. Area	% of Total	Size distribution in CV [%]	Color
350	476	412	3,561.6	965.44	784.2	62	5.4	Blue

Assay Class: High Sensitivity DNA Assay
 Data Path: C:\...ents and Settings\Bioanalyzer\2012-08-30\2012-08-30_002.xad

Created: 8/30/2012 11:56:12 AM
 Modified: 8/30/2012 12:38:27 PM

Electropherogram Summary Continued ...



Setpoint Deviations for sample 4 : Nip-LP-4-1mm-1

Height Threshold [FU] : 20

Overall Results for sample 4 : Nip-LP-4-1mm-1

Number of peaks found: 4
 Noise: 0.8
 Corr. Area 1: 41.7

Peak table for sample 4 : Nip-LP-4-1mm-1

Peak	Size [bp]	Conc. [pg/μl]	Molarity [pmol/l]	Observations
1	35	125.00	5,411.3	Lower Marker
2	433	23.09	80.8	
3	6,351	42.01	10.0	
4	7,086	21.75	4.6	
5	7,628	36.31	7.2	
6	10,380	75.00	10.9	Upper Marker

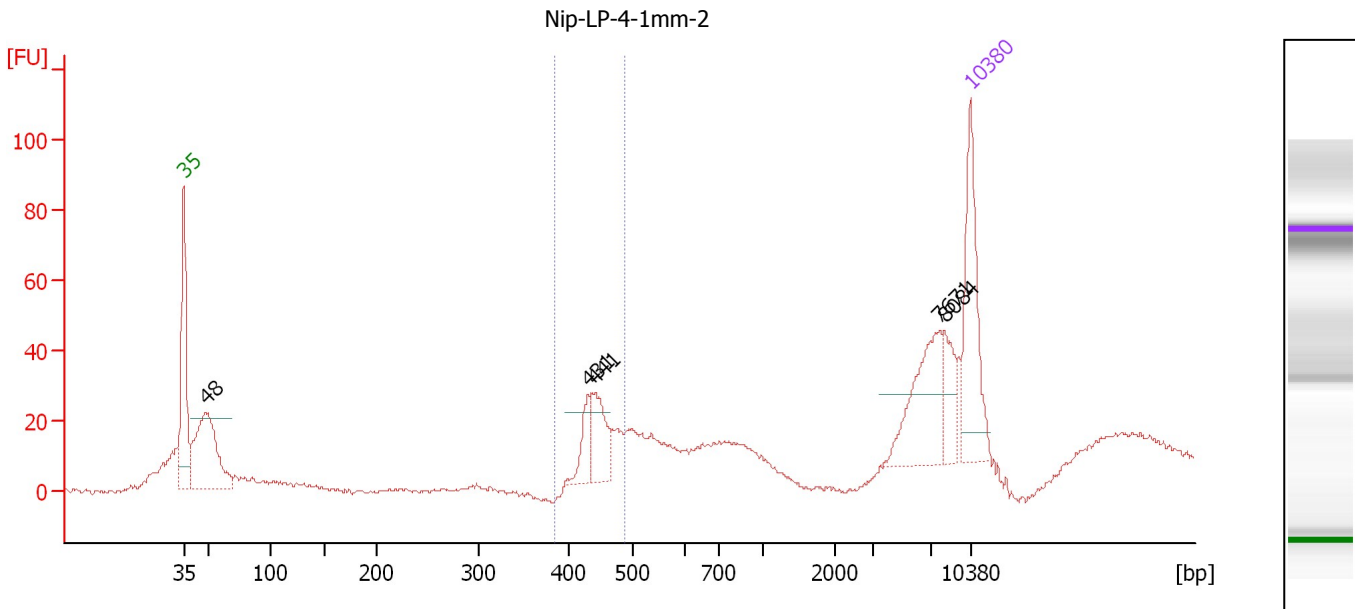
Region table for sample 4 : Nip-LP-4-1mm-1

From [bp]	To [bp]	Average Size [bp]	Molarity [pmol/l]	Conc. [pg/μl]	Corr. Area	% of Total	Size distribution in CV [%]	Color
370	469	442	112.0	32.66	41.7	12	3.1	Blue

Assay Class: High Sensitivity DNA Assay
 Data Path: C:\...ents and Settings\Bioanalyzer\2012-08-30\2012-08-30_002.xad

Created: 8/30/2012 11:56:12 AM
 Modified: 8/30/2012 12:38:27 PM

Electropherogram Summary Continued ...



Setpoint Deviations for sample 5 : Nip-LP-4-1mm-2

Height Threshold [FU] : 20

Overall Results for sample 5 : Nip-LP-4-1mm-2

Number of peaks found: 5 Corr. Area 1: 83.1
 Noise: 0.7

Peak table for sample 5 : Nip-LP-4-1mm-2

Peak	Size [bp]	Conc. [pg/μl]	Molarity [pmol/l]	Observations
1	35	125.00	5,411.3	Lower Marker
2	48	158.88	5,030.6	
3	431	29.85	105.0	
4	441	43.88	150.9	
5	7,671	71.45	14.1	
6	8,084	27.08	5.1	
7	10,380	75.00	10.9	Upper Marker

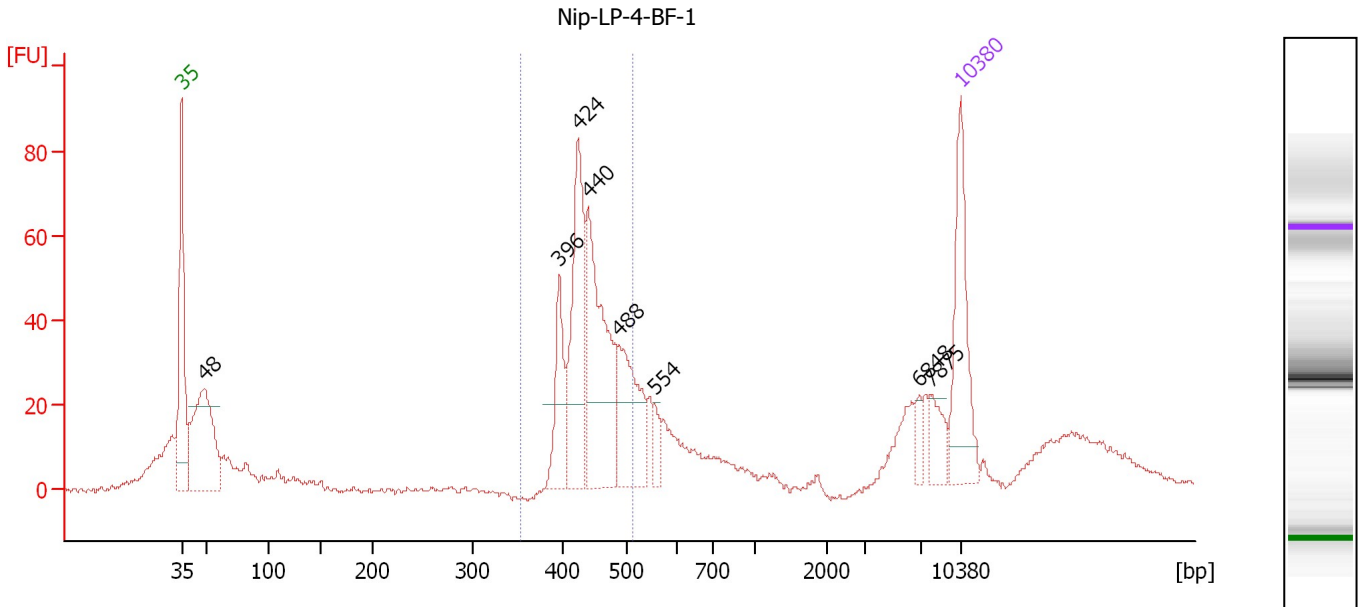
Region table for sample 5 : Nip-LP-4-1mm-2

From [bp]	To [bp]	Average Size [bp]	Molarity [pmol/l]	Conc. [pg/μl]	Corr. Area	% of Total	Size distribution in CV [%]	Color
384	488	449	260.6	77.17	83.1	16	4.2	Blue

Assay Class: High Sensitivity DNA Assay
 Data Path: C:\...ents and Settings\Bioanalyzer\2012-08-30\2012-08-30_002.xad

Created: 8/30/2012 11:56:12 AM
 Modified: 8/30/2012 12:38:27 PM

Electropherogram Summary Continued ...



Setpoint Deviations for sample 6 : Nip-LP-4-BF-1

Height Threshold [FU] : 20

Overall Results for sample 6 : Nip-LP-4-BF-1

Number of peaks found: 8 Corr. Area 1: 402.3
 Noise: 0.7

Peak table for sample 6 : Nip-LP-4-BF-1

Peak	Size [bp]	Conc. [pg/μl]	Molarity [pmol/l]	Observations
1	35	125.00	5,411.3	Lower Marker
2	48	188.51	5,913.3	
3	396	60.74	232.5	
4	424	134.24	480.1	
5	440	166.71	574.5	
6	488	97.90	304.1	
7	554	16.06	43.9	
8	6,848	10.04	2.2	
9	7,875	22.14	4.3	
10	10,380	75.00	10.9	Upper Marker

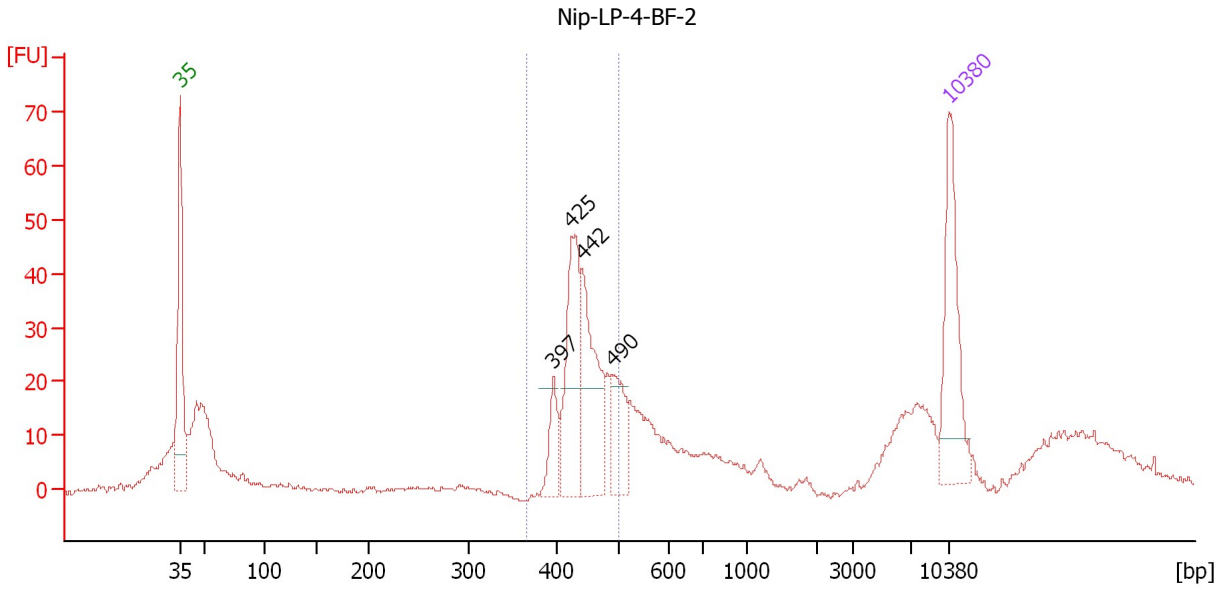
Region table for sample 6 : Nip-LP-4-BF-1

From [bp]	To [bp]	Average Size [bp]	Molarity [pmol/l]	Conc. [pg/μl]	Corr. Area	% of Total	Size distribution in CV [%]	Color
352	514	444	1,438.0	419.63	402.3	42	7.3	Blue

Assay Class: High Sensitivity DNA Assay
 Data Path: C:\...ents and Settings\Bioanalyzer\2012-08-30\2012-08-30_002.xad

Created: 8/30/2012 11:56:12 AM
 Modified: 8/30/2012 12:38:27 PM

Electropherogram Summary Continued ...



Setpoint Deviations for sample 7 : Nip-LP-4-BF-2

Height Threshold [FU] : 20

Overall Results for sample 7 : Nip-LP-4-BF-2

Number of peaks found: 4 Corr. Area 1: 214.6
 Noise: 0.4

Peak table for sample 7 : Nip-LP-4-BF-2

Peak	Size [bp]	Conc. [pg/μl]	Molarity [pmol/l]	Observations
1	35	125.00	5,411.3	Lower Marker
2	397	32.28	123.2	
3	425	108.83	388.3	
4	442	104.62	358.8	
5	490	46.99	145.4	
6	10,380	75.00	10.9	Upper Marker

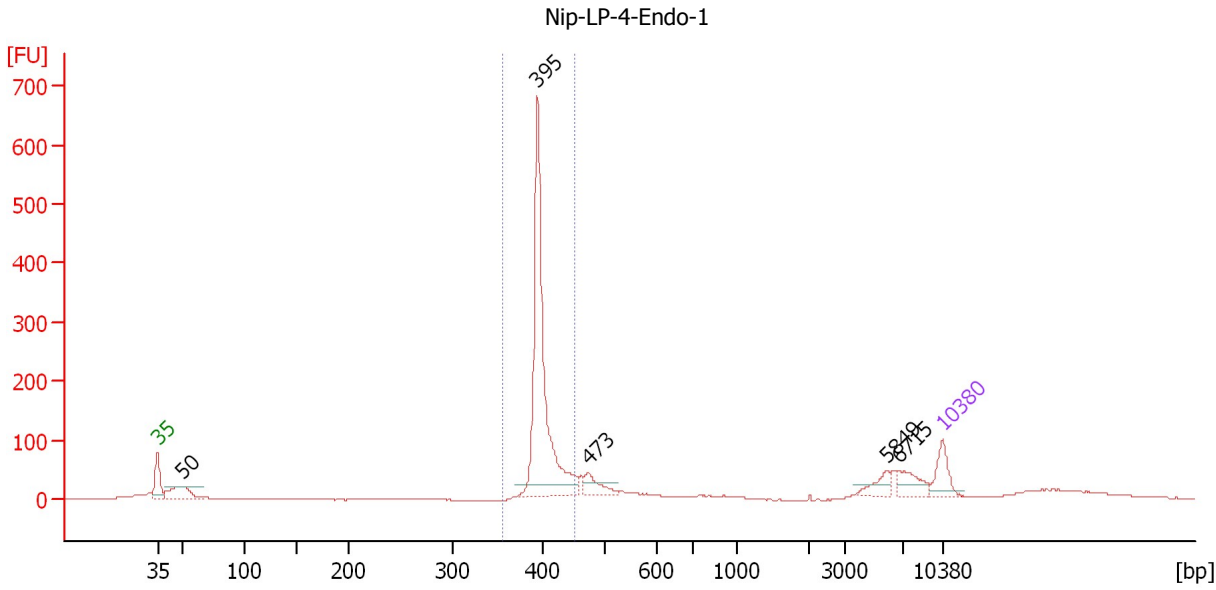
Region table for sample 7 : Nip-LP-4-BF-2

From [bp]	To [bp]	Average Size [bp]	Molarity [pmol/l]	Conc. [pg/μl]	Corr. Area	% of Total	Size distribution in CV [%]	Color
367	502	444	908.9	265.91	214.6	37	6.4	Blue

Assay Class: High Sensitivity DNA Assay
 Data Path: C:\...ents and Settings\Bioanalyzer\2012-08-30\2012-08-30_002.xad

Created: 8/30/2012 11:56:12 AM
 Modified: 8/30/2012 12:38:27 PM

Electropherogram Summary Continued ...



Setpoint Deviations for sample 8 : Nip-LP-4-Endo-1

Height Threshold [FU] : 20

Overall Results for sample 8 : Nip-LP-4-Endo-1

Number of peaks found: 5 Corr. Area 1: 920.6
 Noise: 0.5

Peak table for sample 8 : Nip-LP-4-Endo-1

Peak	Size [bp]	Conc. [pg/μl]	Molarity [pmol/l]	Observations
1	35	125.00	5,411.3	Lower Marker
2	50	173.25	5,298.7	
3	395	944.55	3,620.9	
4	473	77.72	249.2	
5	5,849	49.76	12.9	
6	6,715	74.22	16.7	
7	10,380	75.00	10.9	Upper Marker

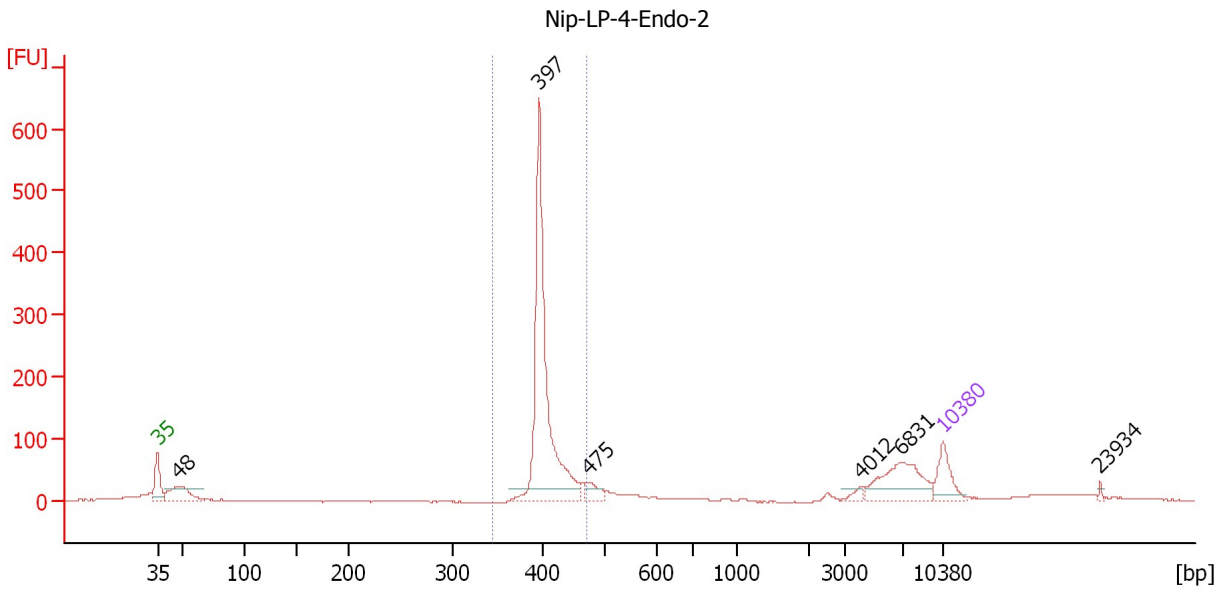
Region table for sample 8 : Nip-LP-4-Endo-1

From [bp]	To [bp]	Average Size [bp]	Molarity [pmol/l]	Conc. [pg/μl]	Corr. Area	% of Total	Size distribution in CV [%]	Color
357	451	402	3,630.8	962.73	920.6	55	3.6	Blue

Assay Class: High Sensitivity DNA Assay
 Data Path: C:\...ents and Settings\Bioanalyzer\2012-08-30\2012-08-30_002.xad

Created: 8/30/2012 11:56:12 AM
 Modified: 8/30/2012 12:38:27 PM

Electropherogram Summary Continued ...



Setpoint Deviations for sample 9 : Nip-LP-4-Endo-2

Height Threshold [FU] : 20

Overall Results for sample 9 : Nip-LP-4-Endo-2

Number of peaks found: 6 Corr. Area 1: 927.3
 Noise: 0.6

Peak table for sample 9 : Nip-LP-4-Endo-2

Peak	Size [bp]	Conc. [pg/μl]	Molarity [pmol/l]	Observations
1	35	125.00	5,411.3	Lower Marker
2	48	168.04	5,331.9	
3	397	876.31	3,347.7	
4	475	51.02	162.9	
5	4,012	16.02	6.0	
6	6,831	177.86	39.4	
7	10,380	75.00	10.9	Upper Marker
8	23,934	0.00	0.0	

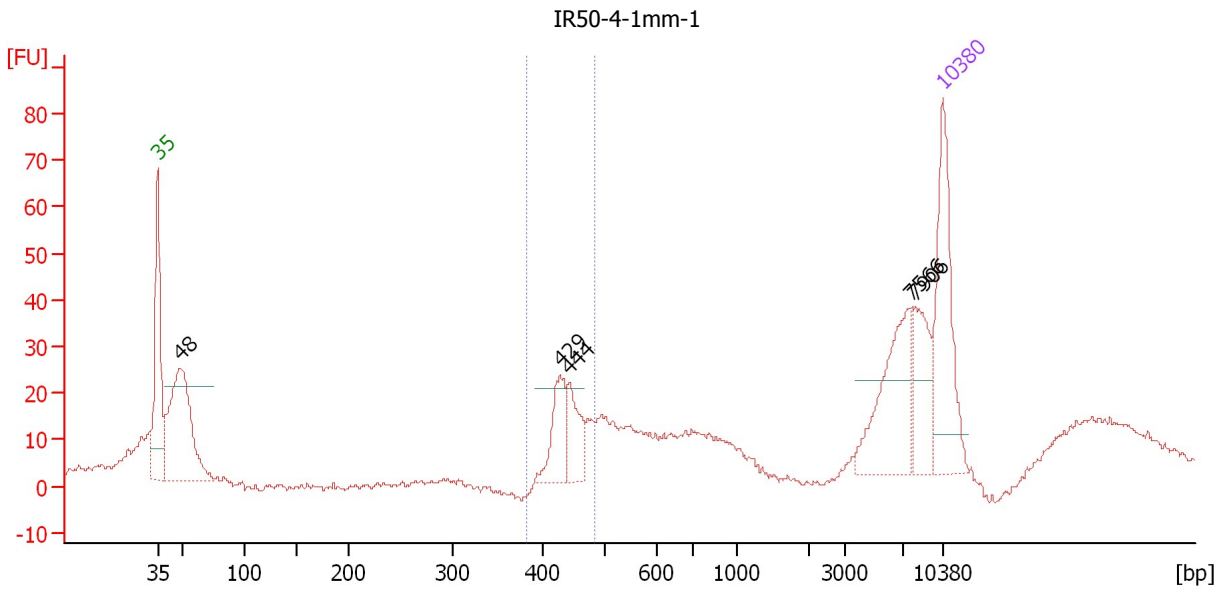
Region table for sample 9 : Nip-LP-4-Endo-2

From [bp]	To [bp]	Average Size [bp]	Molarity [pmol/l]	Conc. [pg/μl]	Corr. Area	% of Total	Size distribution in CV [%]	Color
346	471	407	3,311.5	887.01	927.3	56	4.4	Blue

Assay Class: High Sensitivity DNA Assay
 Data Path: C:\...ents and Settings\Bioanalyzer\2012-08-30\2012-08-30_002.xad

Created: 8/30/2012 11:56:12 AM
 Modified: 8/30/2012 12:38:27 PM

Electropherogram Summary Continued ...



Setpoint Deviations for sample 10 : IR50-4-1mm-1

Height Threshold [FU] : 20

Overall Results for sample 10 : IR50-4-1mm-1

Number of peaks found: 5 Corr. Area 1: 76.1
 Noise: 0.6

Peak table for sample 10 : IR50-4-1mm-1

Peak	Size [bp]	Conc. [pg/μl]	Molarity [pmol/l]	Observations
1	35	125.00	5,411.3	Lower Marker
2	48	181.73	5,746.2	
3	429	42.24	149.4	
4	444	34.01	116.2	
5	7,566	71.82	14.4	
6	7,906	39.18	7.5	
7	10,380	75.00	10.9	Upper Marker

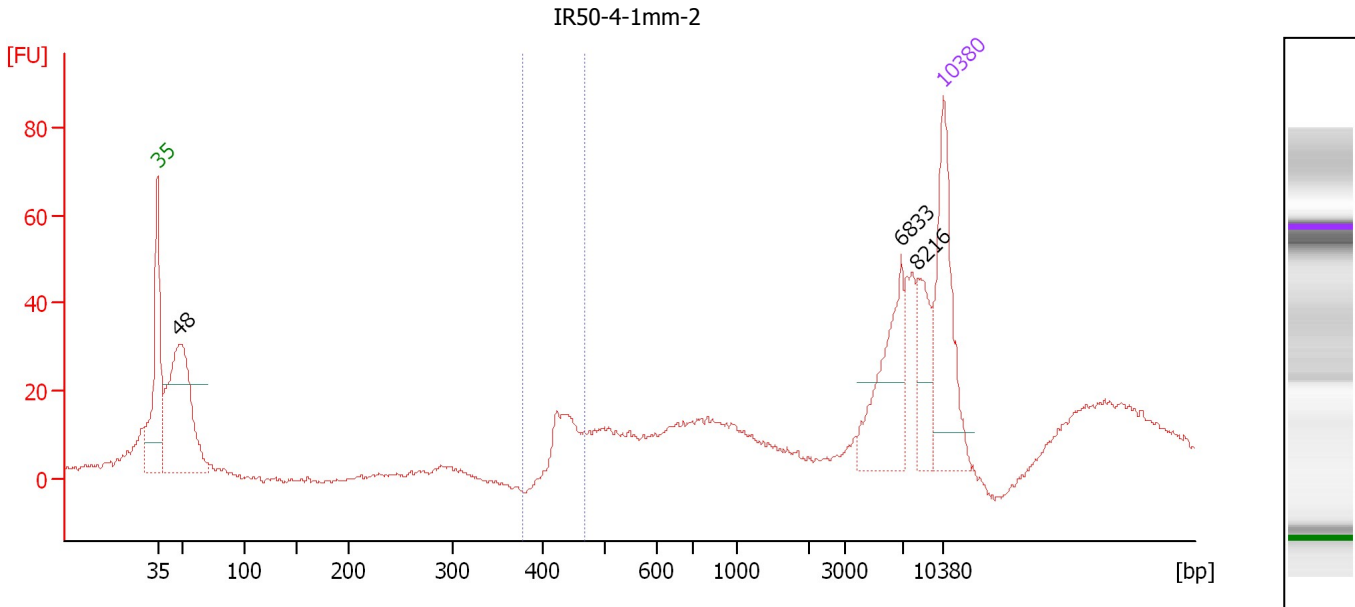
Region table for sample 10 : IR50-4-1mm-1

From [bp]	To [bp]	Average Size [bp]	Molarity [pmol/l]	Conc. [pg/μl]	Corr. Area	% of Total	Size distribution in CV [%]	Color
384	484	444	262.0	76.81	76.1	12	4.4	Blue

Assay Class: High Sensitivity DNA Assay
 Data Path: C:\...ents and Settings\Bioanalyzer\2012-08-30\2012-08-30_002.xad

Created: 8/30/2012 11:56:12 AM
 Modified: 8/30/2012 12:38:27 PM

Electropherogram Summary Continued ...



Setpoint Deviations for sample 11 : IR50-4-1mm-2

Height Threshold [FU] : 20

Overall Results for sample 11 : IR50-4-1mm-2

Number of peaks found: 3 Corr. Area 1: 41.4
 Noise: 0.6

Peak table for sample 11 : IR50-4-1mm-2

Peak	Size [bp]	Conc. [pg/µl]	Molarity [pmol/l]	Observations
1	35	125.00	5,411.3	Lower Marker
2	48	204.89	6,500.2	
3	6,833	66.50	14.7	
4	8,216	33.90	6.3	
5	10,380	75.00	10.9	Upper Marker

Region table for sample 11 : IR50-4-1mm-2

From [bp]	To [bp]	Average Size [bp]	Molarity [pmol/l]	Conc. [pg/µl]	Corr. Area	% of Total	Size distribution in CV [%]	Color
378	468	440	127.5	36.98	41.4	6	3.4	Blue

Assay Class: High Sensitivity DNA Assay
Data Path: C:\...ents and Settings\Bioanalyzer\2012-08-30\2012-08-30_002.xad

Created: 8/30/2012 11:56:12 AM
Modified: 8/30/2012 12:38:27 PM

Gel Image

