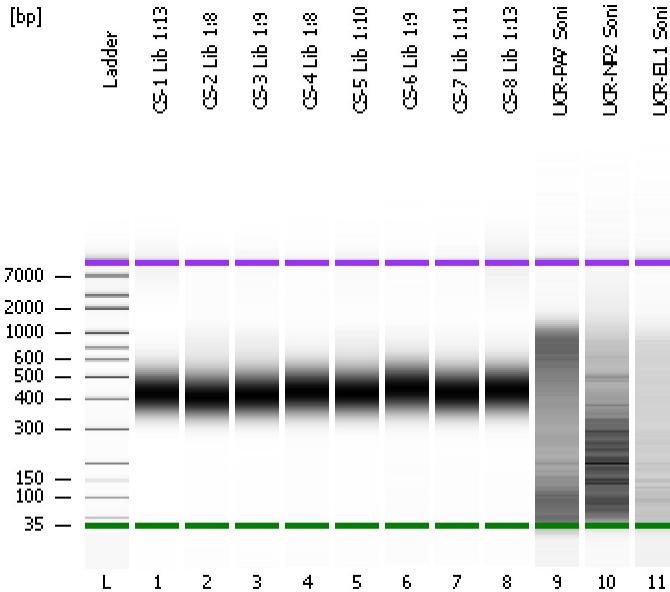


Assay Class: High Sensitivity DNA Assay  
Data Path: C:\...ents and Settings\Bioanalyzer\2012-09-04\2012-09-04\_003.xad

Created: 9/4/2012 12:41:03 PM  
Modified: 9/4/2012 1:25:38 PM

Electrophoresis File Run Summary



Instrument Information:

Instrument Name: DE13701086      Firmware: C.01.069  
Serial#: DE13701086      Type: G2938B

Assay Information:

Assay Origin Path: C:\Program Files\Agilent\2100 bioanalyzer\2100 expert\assays\dsDNA\High Sensitivity DNA.xsy  
Assay Class: High Sensitivity DNA Assay  
Version: 1.03  
Assay Comments: Copyright © 2003-2010 Agilent Technologies

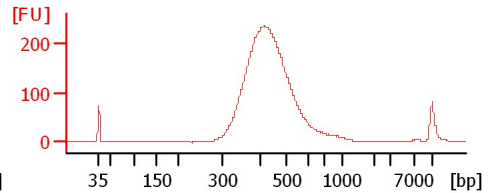
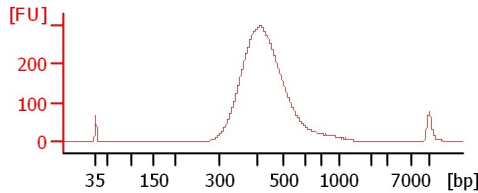
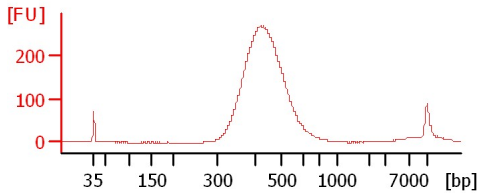
Chip Information:

Chip Lot #:  
Reagent Kit Lot #:  
Chip Comments:

CS-1 Lib 1:13

CS-2 Lib 1:8

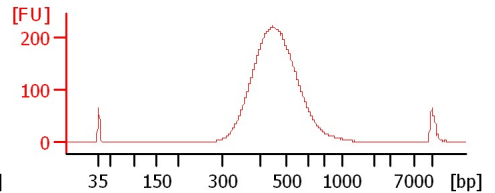
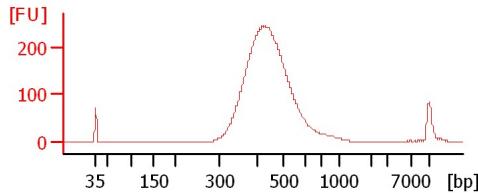
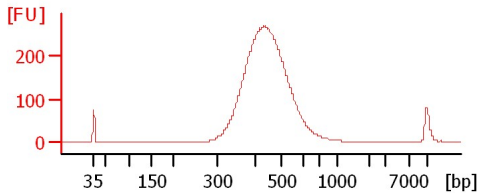
CS-3 Lib 1:9



CS-4 Lib 1:8

CS-5 Lib 1:10

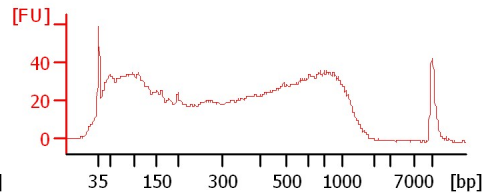
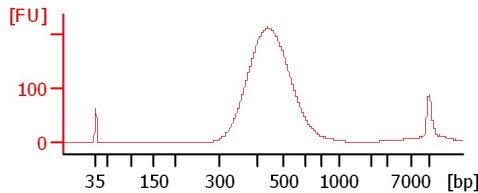
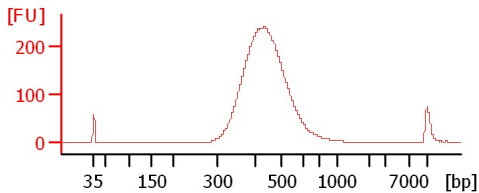
CS-6 Lib 1:9



CS-7 Lib 1:11

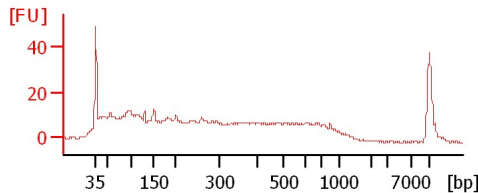
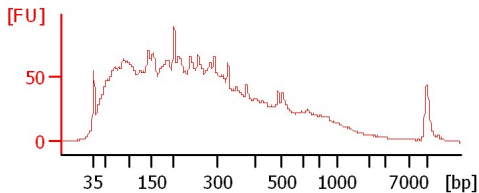
CS-8 Lib 1:13

UCR-PA7 Soni



UCR-NP2 Soni

UCR-EL1 Soni



Assay Class: High Sensitivity DNA Assay  
Data Path: C:\...ents and Settings\Bioanalyzer\2012-09-04\2012-09-04\_003.xad

Created: 9/4/2012 12:41:03 PM  
Modified: 9/4/2012 1:25:38 PM

**Electrophoresis File Run Summary (Chip Summary)**

Sample Name	Sample Comment	Rest. Digest	Status	Observation	Result Label	Result Color
CS-1 Lib 1:13		<input type="checkbox"/>	✓			
CS-2 Lib 1:8		<input type="checkbox"/>	✓			
CS-3 Lib 1:9		<input type="checkbox"/>	✓			
CS-4 Lib 1:8		<input type="checkbox"/>	✓			
CS-5 Lib 1:10		<input type="checkbox"/>	✓			
CS-6 Lib 1:9		<input type="checkbox"/>	✓			
CS-7 Lib 1:11		<input type="checkbox"/>	✓			
CS-8 Lib 1:13		<input type="checkbox"/>	✓			
UCR-PA7 Soni		<input type="checkbox"/>	✓			
UCR-NP2 Soni		<input type="checkbox"/>	✓			
UCR-EL1 Soni		<input type="checkbox"/>	✓			
Ladder		<input type="checkbox"/>	✓			

**Chip Lot #**

**Reagent Kit Lot #**

**Chip Comments :**

Assay Class: High Sensitivity DNA Assay  
Data Path: C:\...ents and Settings\Bioanalyzer\2012-09-04\2012-09-04\_003.xad

Created: 9/4/2012 12:41:03 PM  
Modified: 9/4/2012 1:25:38 PM

**Electrophoresis Assay Details**

**General Analysis Settings**

Number of Available Sample and Ladder Wells (Max.) : 12  
Minimum Visible Range [s] : 32  
Maximum Visible Range [s] : 138  
Start Analysis Time Range [s] : 33  
End Analysis Time Range [s] : 137.5  
Ladder Concentration [pg/ $\mu$ l] : 1950  
Uses Standard Area for Ladder Fragments  
Lower Marker Concentration [pg/ $\mu$ l] : 125  
Upper Marker Concentration [pg/ $\mu$ l] : 75  
Used Upper Marker for Quantitation  
Standard Curve Fit is Point to Point  
Show Data Aligned to Lower and Upper Marker

**Integrator Settings**

Integration Start Time [s] : 33.05  
Integration End Time [s] : 137  
Slope Threshold : 0.8  
Height Threshold [FU] : 5  
Area Threshold : 0.1  
Width Threshold [s] : 0.6  
Baseline Plateau [s] : 0.5

**Filter Settings**

Filter Width [s] : 0.5  
Polynomial Order : 4

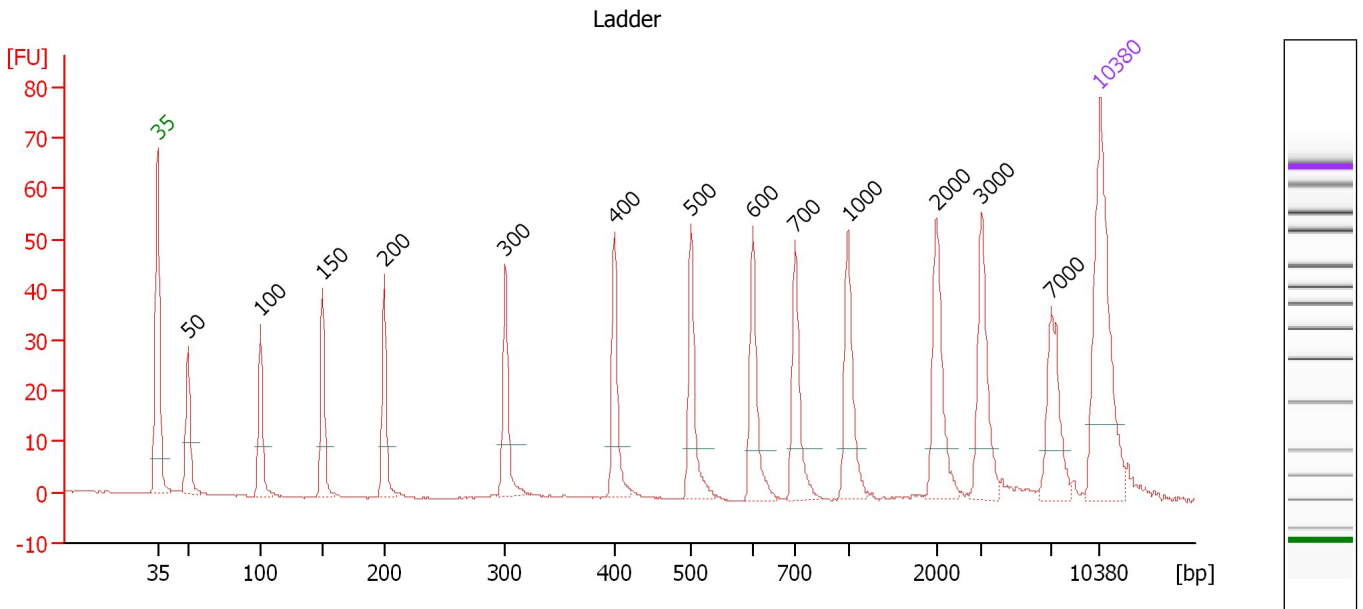
**Ladder**

Ladder Peak	Size	Area
1	35	160
2	50	210
3	100	208
4	150	221
5	200	242
6	300	270
7	400	305
8	500	306
9	600	336
10	700	321
11	1000	366
12	2000	413
13	3000	411
14	7000	400
15	10380	214

Assay Class: High Sensitivity DNA Assay  
 Data Path: C:\...ents and Settings\Bioanalyzer\2012-09-04\2012-09-04\_003.xad

Created: 9/4/2012 12:41:03 PM  
 Modified: 9/4/2012 1:25:38 PM

**Electropherogram Summary**



**Overall Results for Ladder**

Noise: 0.1

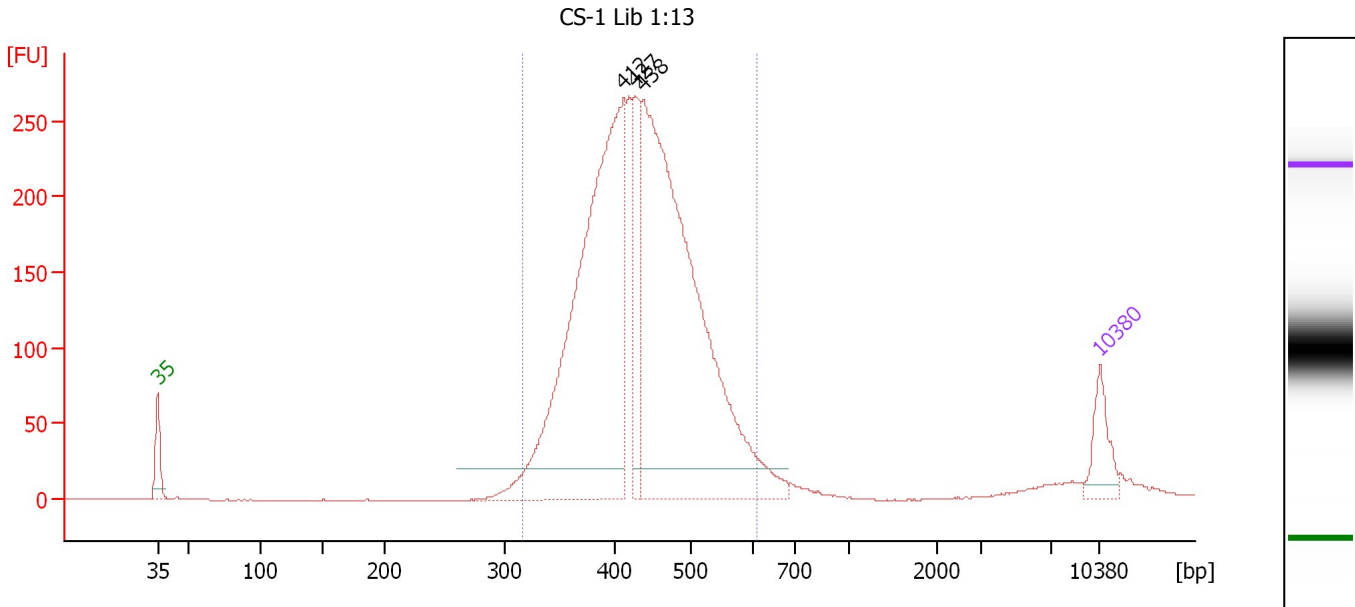
**Peak table for Ladder**

Peak	Size [bp]	Conc. [pg/μl]	Molarity [pmol/l]	Observations
1	35	125.00	5,411.3	Lower Marker
2	50	150.00	4,545.5	Ladder Peak
3	100	150.00	2,272.7	Ladder Peak
4	150	150.00	1,515.2	Ladder Peak
5	200	150.00	1,136.4	Ladder Peak
6	300	150.00	757.6	Ladder Peak
7	400	150.00	568.2	Ladder Peak
8	500	150.00	454.5	Ladder Peak
9	600	150.00	378.8	Ladder Peak
10	700	150.00	324.7	Ladder Peak
11	1,000	150.00	227.3	Ladder Peak
12	2,000	150.00	113.6	Ladder Peak
13	3,000	150.00	75.8	Ladder Peak
14	7,000	150.00	32.5	Ladder Peak
15	10,380	75.00	10.9	Upper Marker

Assay Class: High Sensitivity DNA Assay  
 Data Path: C:\...ents and Settings\Bioanalyzer\2012-09-04\2012-09-04\_003.xad

Created: 9/4/2012 12:41:03 PM  
 Modified: 9/4/2012 1:25:38 PM

**Electropherogram Summary Continued ...**



**Setpoint Deviations for sample 1 : CS-1 Lib 1:13**

Height Threshold [FU] : 20

**Overall Results for sample 1 : CS-1 Lib 1:13**

Number of peaks found: 3                      Corr. Area 1: 3,378.6  
 Noise: 0.2

**Peak table for sample 1 : CS-1 Lib 1:13**

Peak	Size [bp]	Conc. [pg/μl]	Molarity [pmol/l]	Observations
1	35	125.00	5,411.3	Lower Marker
2	412	1,485.04	5,464.5	
3	427	228.29	810.4	
4	438	1,677.77	5,804.6	
5	10,380	75.00	10.9	Upper Marker

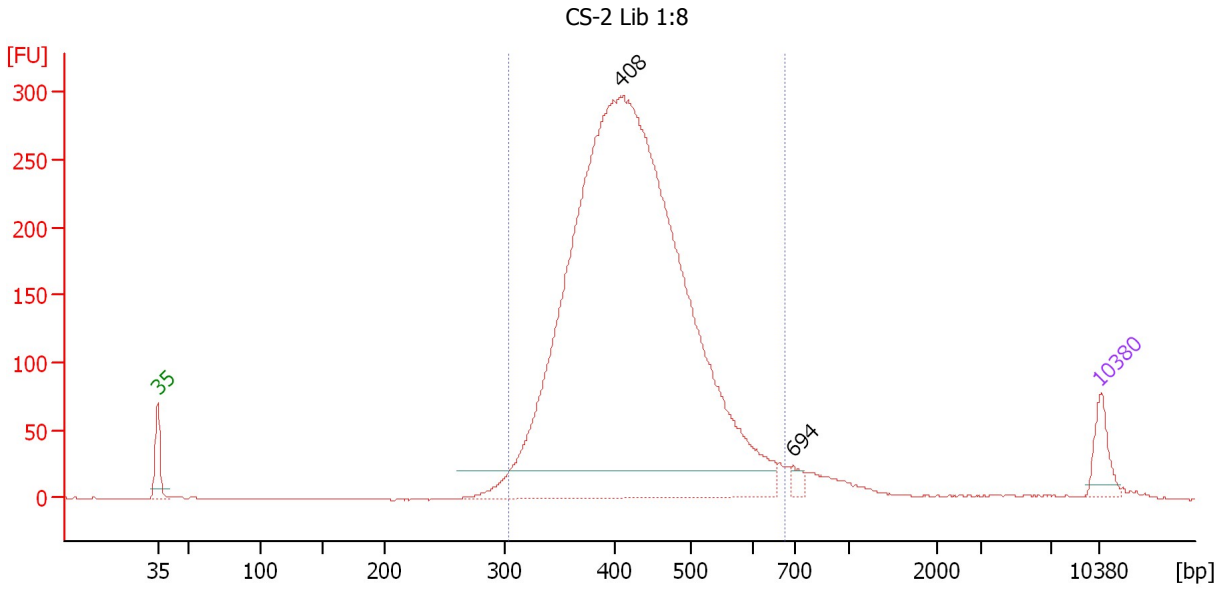
**Region table for sample 1 : CS-1 Lib 1:13**

From [bp]	To [bp]	Average Size [bp]	Molarity [pmol/l]	Conc. [pg/μl]	Corr. Area	% of Total	Size distribution in CV [%]	Color
316	612	436	12,491.7	3,512.98	3,378.6	94	13.9	Blue

Assay Class: High Sensitivity DNA Assay  
 Data Path: C:\...ents and Settings\Bioanalyzer\2012-09-04\2012-09-04\_003.xad

Created: 9/4/2012 12:41:03 PM  
 Modified: 9/4/2012 1:25:38 PM

**Electropherogram Summary Continued ...**



**Setpoint Deviations for sample 2 : CS-2 Lib 1:8**

Height Threshold [FU] : 20

**Overall Results for sample 2 : CS-2 Lib 1:8**

Number of peaks found: 2                      Corr. Area 1: 3,975.2  
 Noise: 0.3

**Peak table for sample 2 : CS-2 Lib 1:8**

Peak	Size [bp]	Conc. [pg/μl]	Molarity [pmol/l]	Observations
1	35	125.00	5,411.3	Lower Marker
2	408	5,101.76	18,932.1	
3	694	30.85	67.4	
4	10,380	75.00	10.9	Upper Marker

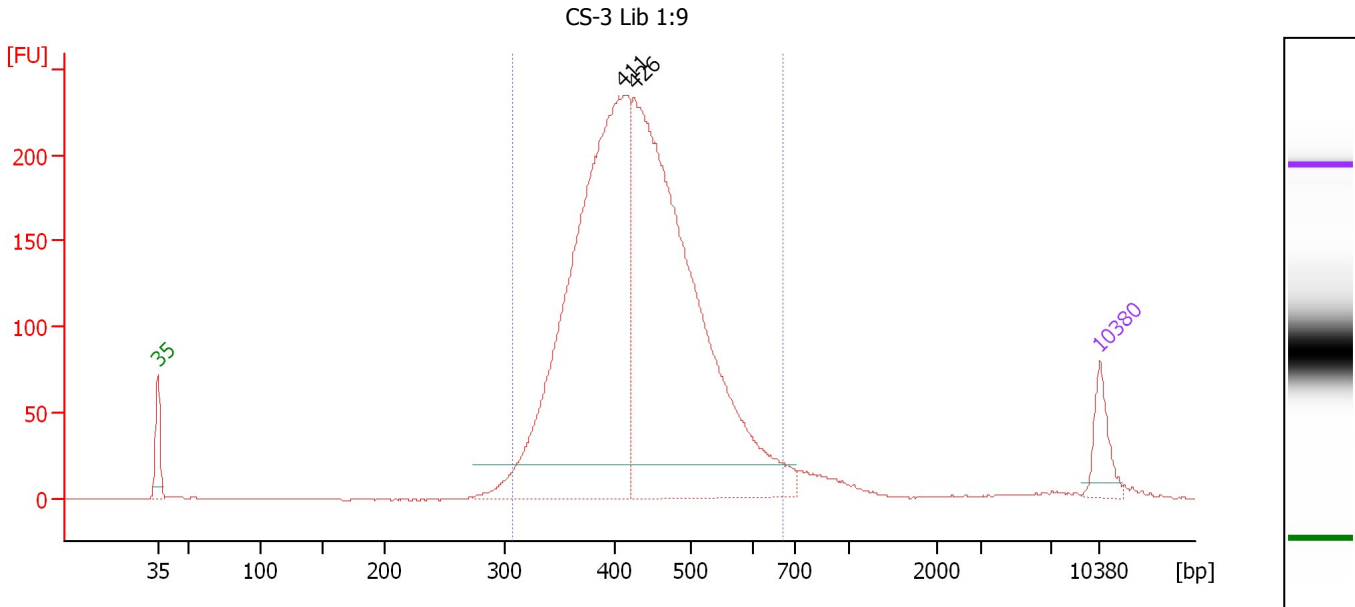
**Region table for sample 2 : CS-2 Lib 1:8**

From [bp]	To [bp]	Average Size [bp]	Molarity [pmol/l]	Conc. [pg/μl]	Corr. Area	% of Total	Size distribution in CV [%]	Color
304	675	430	18,606.1	5,122.15	3,975.2	94	16.0	Blue

Assay Class: High Sensitivity DNA Assay  
 Data Path: C:\...ents and Settings\Bioanalyzer\2012-09-04\2012-09-04\_003.xad

Created: 9/4/2012 12:41:03 PM  
 Modified: 9/4/2012 1:25:38 PM

**Electropherogram Summary Continued ...**



**Setpoint Deviations for sample 3 : CS-3 Lib 1:9**

Height Threshold [FU] : 20

**Overall Results for sample 3 : CS-3 Lib 1:9**

Number of peaks found: 2                      Corr. Area 1: 3,185.6  
 Noise: 0.2

**Peak table for sample 3 : CS-3 Lib 1:9**

Peak	Size [bp]	Conc. [pg/μl]	Molarity [pmol/l]	Observations
1	35	125.00	5,411.3	Lower Marker
2	411	1,947.38	7,172.1	
3	426	2,005.16	7,138.2	
4	10,380	75.00	10.9	Upper Marker

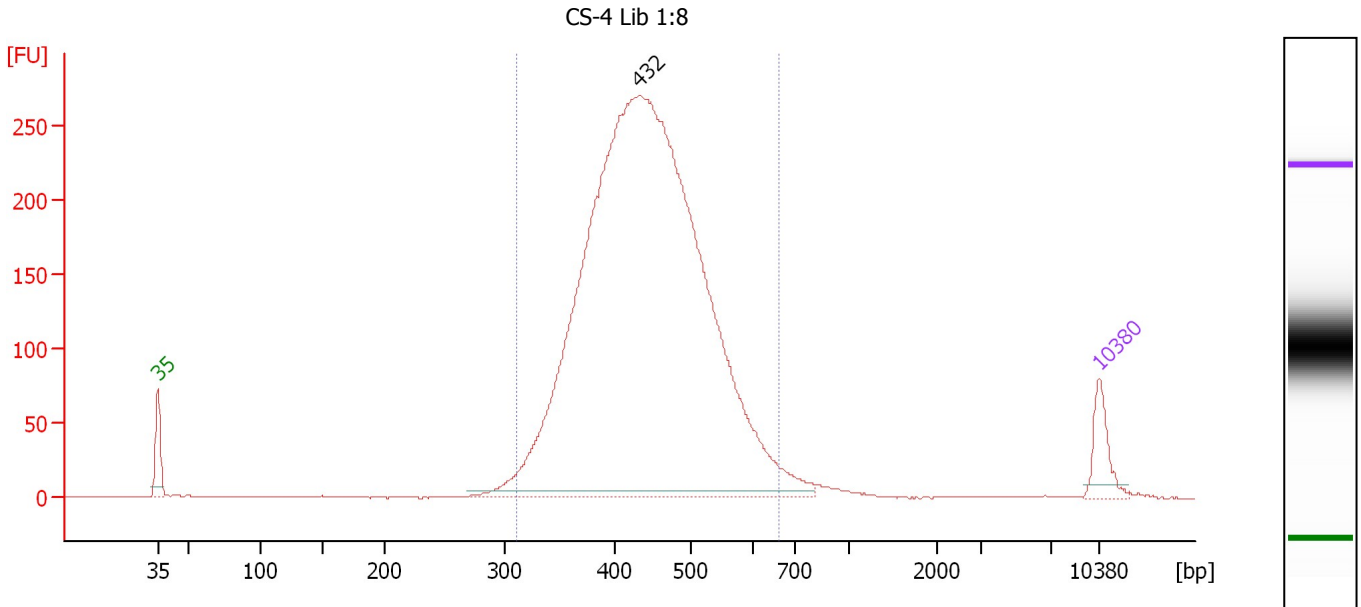
**Region table for sample 3 : CS-3 Lib 1:9**

From [bp]	To [bp]	Average Size [bp]	Molarity [pmol/l]	Conc. [pg/μl]	Corr. Area	% of Total	Size distribution in CV [%]	Color
306	669	435	14,060.5	3,917.74	3,185.6	94	15.9	Blue

Assay Class: High Sensitivity DNA Assay  
 Data Path: C:\...ents and Settings\Bioanalyzer\2012-09-04\2012-09-04\_003.xad

Created: 9/4/2012 12:41:03 PM  
 Modified: 9/4/2012 1:25:38 PM

**Electropherogram Summary Continued ...**



**Overall Results for sample 4 : CS-4 Lib 1:8**

Number of peaks found: 1                      Corr. Area 1: 3,636.3  
 Noise: 0.2

**Peak table for sample 4 : CS-4 Lib 1:8**

Peak	Size [bp]	Conc. [pg/μl]	Molarity [pmol/l]	Observations
1	35	125.00	5,411.3	Lower Marker
2	432	4,358.84	15,280.3	
3	10,380	75.00	10.9	Upper Marker

**Region table for sample 4 : CS-4 Lib 1:8**

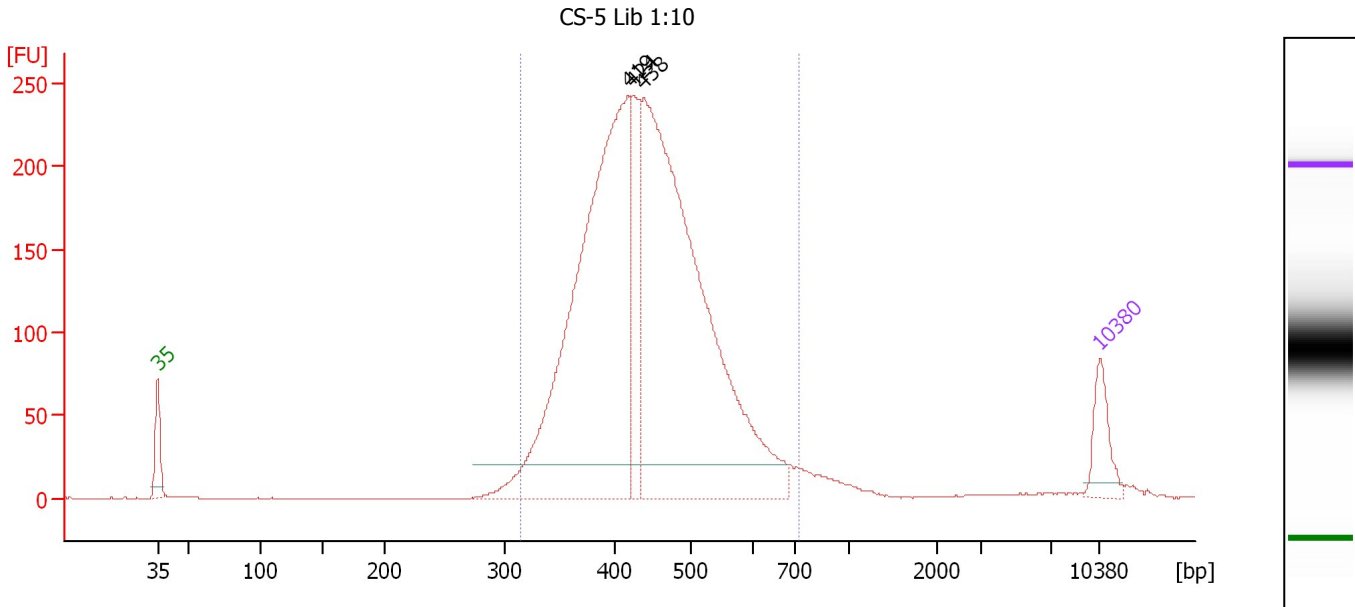
From [bp]	To [bp]	Average Size [bp]	Molarity [pmol/l]	Conc. [pg/μl]	Corr. Area	% of Total	Size distribution in CV [%]	Color
310	660	445	15,041.6	4,293.02	3,636.3	96	15.3	Blue



Assay Class: High Sensitivity DNA Assay  
 Data Path: C:\...ents and Settings\Bioanalyzer\2012-09-04\2012-09-04\_003.xad

Created: 9/4/2012 12:41:03 PM  
 Modified: 9/4/2012 1:25:38 PM

**Electropherogram Summary Continued ...**



**Setpoint Deviations for sample 5 : CS-5 Lib 1:10**

Height Threshold [FU] : 20

**Overall Results for sample 5 : CS-5 Lib 1:10**

Number of peaks found: 3                      Corr. Area 1: 3,255.3  
 Noise: 0.2

**Peak table for sample 5 : CS-5 Lib 1:10**

Peak	Size [bp]	Conc. [pg/μl]	Molarity [pmol/l]	Observations
1	35	125.00	5,411.3	Lower Marker
2	419	1,555.10	5,624.2	
3	424	235.76	842.1	
4	438	1,755.36	6,069.4	
5	10,380	75.00	10.9	Upper Marker

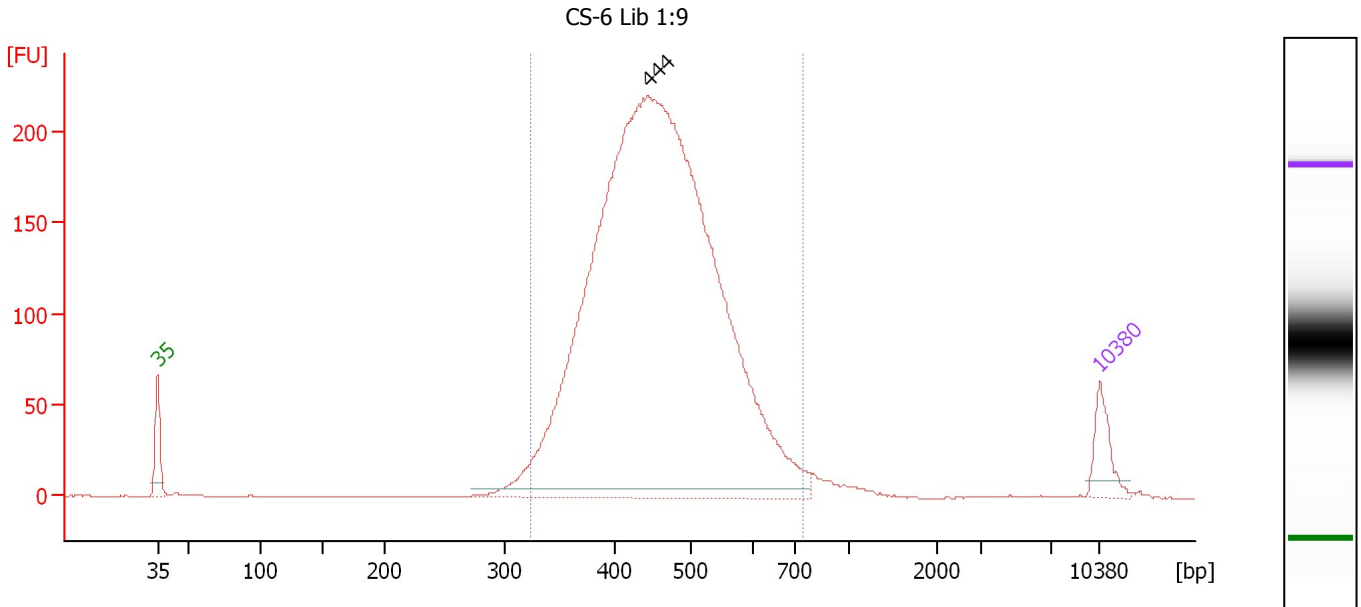
**Region table for sample 5 : CS-5 Lib 1:10**

From [bp]	To [bp]	Average Size [bp]	Molarity [pmol/l]	Conc. [pg/μl]	Corr. Area	% of Total	Size distribution in CV [%]	Color
314	718	446	12,470.3	3,551.96	3,255.3	95	16.4	Blue

Assay Class: High Sensitivity DNA Assay  
 Data Path: C:\...ents and Settings\Bioanalyzer\2012-09-04\2012-09-04\_003.xad

Created: 9/4/2012 12:41:03 PM  
 Modified: 9/4/2012 1:25:38 PM

**Electropherogram Summary Continued ...**



**Overall Results for sample 6 : CS-6 Lib 1:9**

Number of peaks found: 1                      Corr. Area 1: 3,007.1  
 Noise: 0.2

**Peak table for sample 6 : CS-6 Lib 1:9**

Peak	Size [bp]	Conc. [pg/μl]	Molarity [pmol/l]	Observations
1	35	125.00	5,411.3	Lower Marker
2	444	4,412.17	15,062.9	
3	10,380	75.00	10.9	Upper Marker

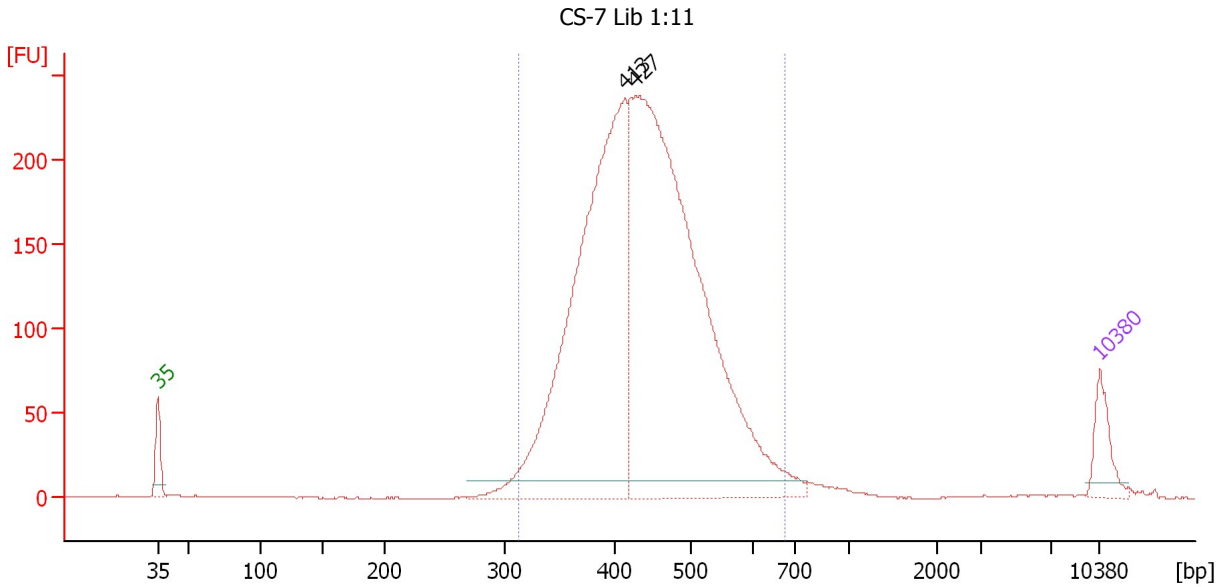
**Region table for sample 6 : CS-6 Lib 1:9**

From [bp]	To [bp]	Average Size [bp]	Molarity [pmol/l]	Conc. [pg/μl]	Corr. Area	% of Total	Size distribution in CV [%]	Color
322	739	462	14,627.2	4,311.02	3,007.1	96	16.4	Blue

Assay Class: High Sensitivity DNA Assay  
 Data Path: C:\...ents and Settings\Bioanalyzer\2012-09-04\2012-09-04\_003.xad

Created: 9/4/2012 12:41:03 PM  
 Modified: 9/4/2012 1:25:38 PM

**Electropherogram Summary Continued ...**



**Setpoint Deviations for sample 7 : CS-7 Lib 1:11**

Height Threshold [FU] : 10

**Overall Results for sample 7 : CS-7 Lib 1:11**

Number of peaks found: 2                      Corr. Area 1: 3,153.2  
 Noise: 0.2

**Peak table for sample 7 : CS-7 Lib 1:11**

Peak	Size [bp]	Conc. [pg/µl]	Molarity [pmol/l]	Observations
1	35	125.00	5,411.3	Lower Marker
2	413	1,671.89	6,131.8	
3	427	2,300.58	8,154.1	
4	10,380	75.00	10.9	Upper Marker

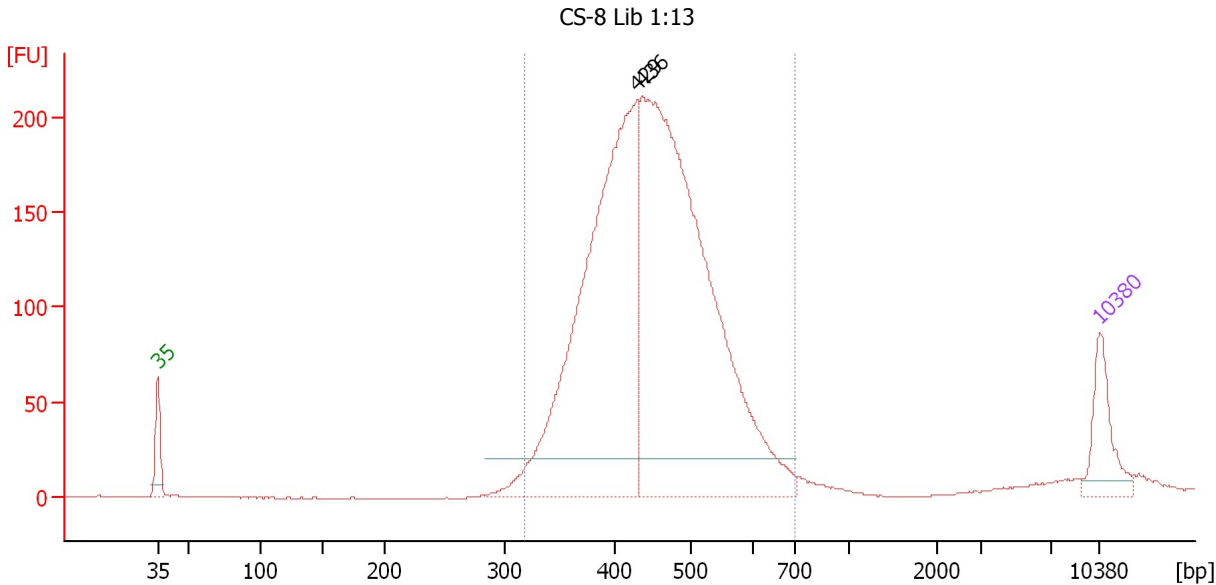
**Region table for sample 7 : CS-7 Lib 1:11**

From [bp]	To [bp]	Average Size [bp]	Molarity [pmol/l]	Conc. [pg/µl]	Corr. Area	% of Total	Size distribution in CV [%]	Color
311	675	442	13,785.3	3,904.70	3,153.2	96	15.5	Blue

Assay Class: High Sensitivity DNA Assay  
 Data Path: C:\...ents and Settings\Bioanalyzer\2012-09-04\2012-09-04\_003.xad

Created: 9/4/2012 12:41:03 PM  
 Modified: 9/4/2012 1:25:38 PM

**Electropherogram Summary Continued ...**



**Setpoint Deviations for sample 8 : CS-8 Lib 1:13**

Height Threshold [FU] : 20

**Overall Results for sample 8 : CS-8 Lib 1:13**

Number of peaks found: 2                      Corr. Area 1: 2,791.4  
 Noise: 0.2

**Peak table for sample 8 : CS-8 Lib 1:13**

Peak	Size [bp]	Conc. [pg/μl]	Molarity [pmol/l]	Observations
1	35	125.00	5,411.3	Lower Marker
2	429	1,067.60	3,771.5	
3	436	1,403.22	4,875.0	
4	10,380	75.00	10.9	Upper Marker

**Region table for sample 8 : CS-8 Lib 1:13**

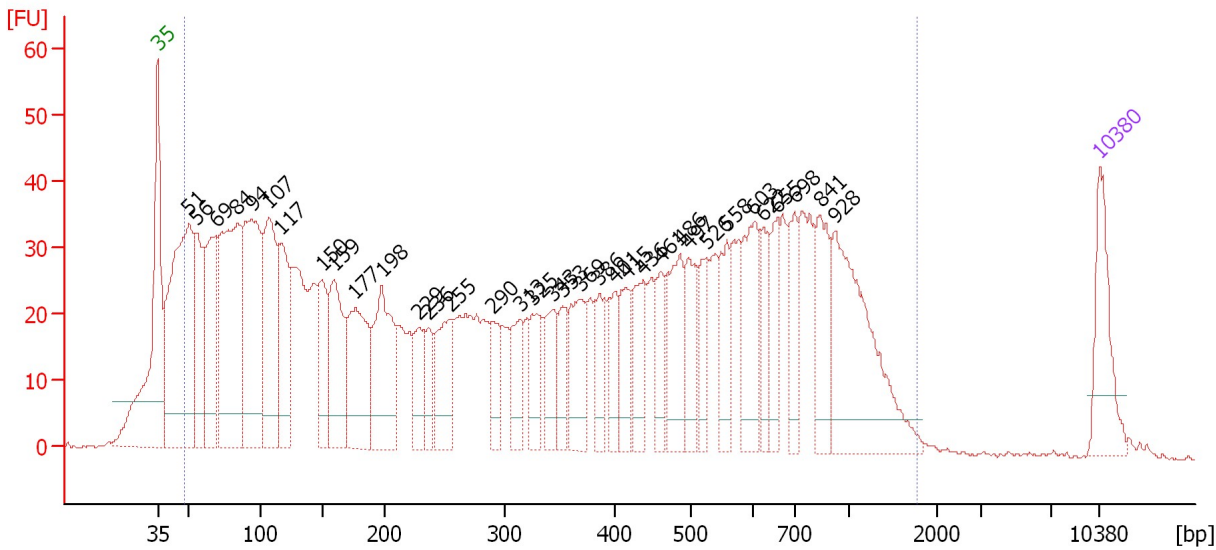
From [bp]	To [bp]	Average Size [bp]	Molarity [pmol/l]	Conc. [pg/μl]	Corr. Area	% of Total	Size distribution in CV [%]	Color
317	699	453	8,468.2	2,453.26	2,791.4	94	15.8	Blue

Assay Class: High Sensitivity DNA Assay  
 Data Path: C:\...ents and Settings\Bioanalyzer\2012-09-04\2012-09-04\_003.xad

Created: 9/4/2012 12:41:03 PM  
 Modified: 9/4/2012 1:25:38 PM

**Electropherogram Summary Continued ...**

UCR-PA7 Soni



**Overall Results for sample 9 : UCR-PA7 Soni**

Number of peaks found: 35                      Corr. Area 1: 1,983.4  
 Noise: 0.3

**Peak table for sample 9 : UCR-PA7 Soni**

Peak	Size [bp]	Conc. [pg/μl]	Molarity [pmol/l]	Observations
1	35	125.00	5,411.3	Lower Marker
2	51	463.62	13,904.2	
3	56	149.02	4,043.3	
4	69	200.02	4,367.4	
5	84	396.64	7,162.6	
6	94	320.21	5,157.9	
7	107	238.34	3,389.3	
8	117	167.65	2,178.6	
9	150	107.17	1,085.9	
10	159	161.07	1,533.8	
11	177	179.18	1,537.4	
12	198	177.94	1,361.6	
13	229	65.27	431.8	
14	236	51.84	332.2	
15	255	99.68	592.6	
16	290	59.72	312.1	
17	313	67.07	324.6	
18	325	65.41	304.8	
19	343	64.24	283.7	
20	353	50.12	215.4	
21	369	93.86	385.2	
22	386	50.52	198.4	
23	401	53.20	201.2	
24	415	61.72	225.2	
25	436	66.38	230.5	
26	461	49.92	164.1	

Assay Class: High Sensitivity DNA Assay  
 Data Path: C:\...ents and Settings\Bioanalyzer\2012-09-04\2012-09-04\_003.xad


Created: 9/4/2012 12:41:03 PM  
 Modified: 9/4/2012 1:25:38 PM

**Electropherogram Summary Continued ...**

**... Peak table for sample 9 : UCR-PA7 Soni**

Peak	Size [bp]	Conc. [pg/µl]	Molarity [pmol/l]	Observations
27	486	103.32	322.3	
28	497	64.14	195.7	
29	526	54.40	156.6	
30	558	66.50	180.6	
31	603	112.67	283.2	
32	622	52.82	128.6	
33	655	54.47	126.0	
34	698	60.45	131.3	
35	841	88.75	160.0	
36	928	231.17	377.6	
37	▶ 10,380	75.00	10.9	Upper Marker

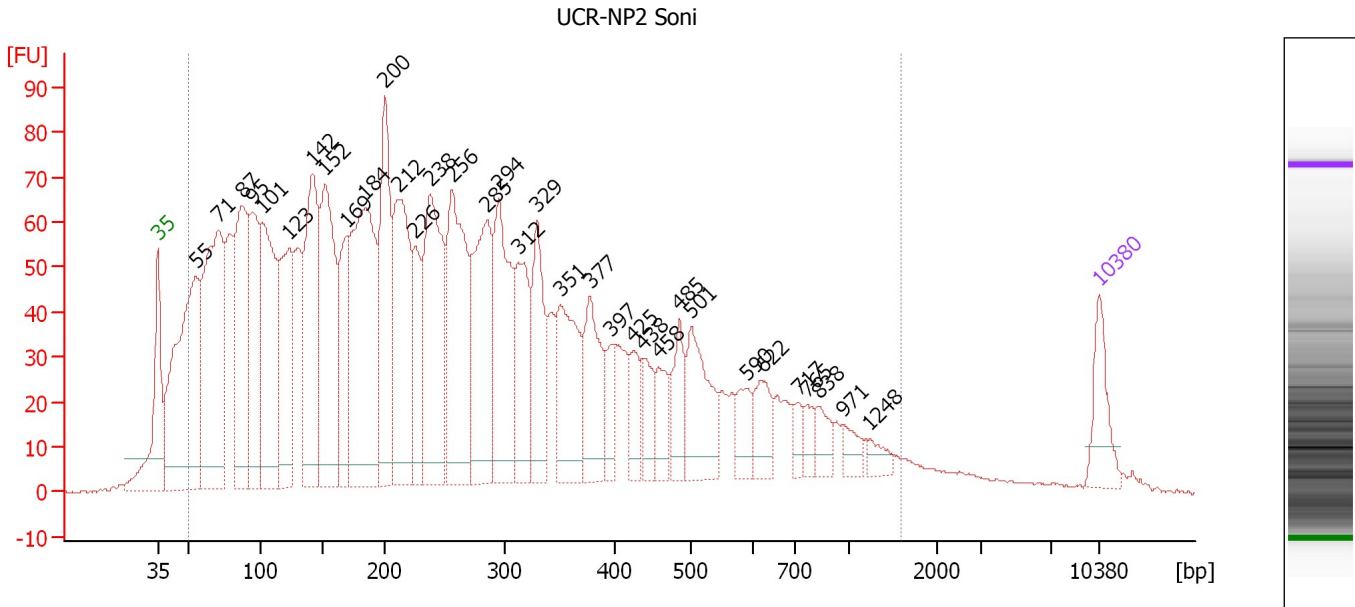
**Region table for sample 9 : UCR-PA7 Soni**

From [bp]	To [bp]	Average Size [bp]	Molarity [pmol/l]	Conc. [pg/µl]	Corr. Area	% of Total	Size distribution in CV [%]	Color
48	1,771	420	50,292.4	5,262.15	1,983.4	95	74.9	

Assay Class: High Sensitivity DNA Assay  
 Data Path: C:\...ents and Settings\Bioanalyzer\2012-09-04\2012-09-04\_003.xad

Created: 9/4/2012 12:41:03 PM  
 Modified: 9/4/2012 1:25:38 PM

**Electropherogram Summary Continued ...**



**Overall Results for sample 10 : UCR-NP2 Soni**

Number of peaks found: 34                      Corr. Area 1: 3,426.6  
 Noise: 0.2

**Peak table for sample 10 : UCR-NP2 Soni**

Peak	Size [bp]	Conc. [pg/μl]	Molarity [pmol/l]	Observations
1	35	125.00	5,411.3	Lower Marker
2	55	718.67	19,659.7	
3	71	680.50	14,486.9	
4	87	462.86	8,019.3	
5	95	325.50	5,199.6	
6	101	486.18	7,260.6	
7	123	345.02	4,247.1	
8	142	473.24	5,054.2	
9	152	477.47	4,755.3	
10	169	200.33	1,792.0	
11	184	655.54	5,388.8	
12	200	380.72	2,878.3	
13	212	422.96	3,020.9	
14	226	163.81	1,100.1	
15	238	449.25	2,860.9	
16	256	440.59	2,606.7	
17	285	357.69	1,902.8	
18	294	333.88	1,719.6	
19	312	216.15	1,050.5	
20	329	199.11	916.1	
21	351	241.72	1,044.1	
22	377	181.55	728.7	
23	397	63.53	242.5	
24	425	75.92	270.9	
25	438	69.22	239.7	
26	458	71.41	236.2	

Assay Class: High Sensitivity DNA Assay  
 Data Path: C:\...ents and Settings\Bioanalyzer\2012-09-04\2012-09-04\_003.xad


Created: 9/4/2012 12:41:03 PM  
 Modified: 9/4/2012 1:25:38 PM

### Electropherogram Summary Continued ...

#### ... Peak table for sample 10 : UCR-NP2 Soni

Peak	Size [bp]	Conc. [pg/μl]	Molarity [pmol/l]	Observations
27	485	92.78	289.8	
28	501	182.49	551.6	
29	590	61.83	158.9	
30	622	76.09	185.4	
31	717	31.77	67.2	
32	765	31.63	62.6	
33	838	42.20	76.3	
34	971	33.21	51.8	
35	1,248	24.57	29.8	
36	▶ 10,380	75.00	10.9	Upper Marker

#### Region table for sample 10 : UCR-NP2 Soni

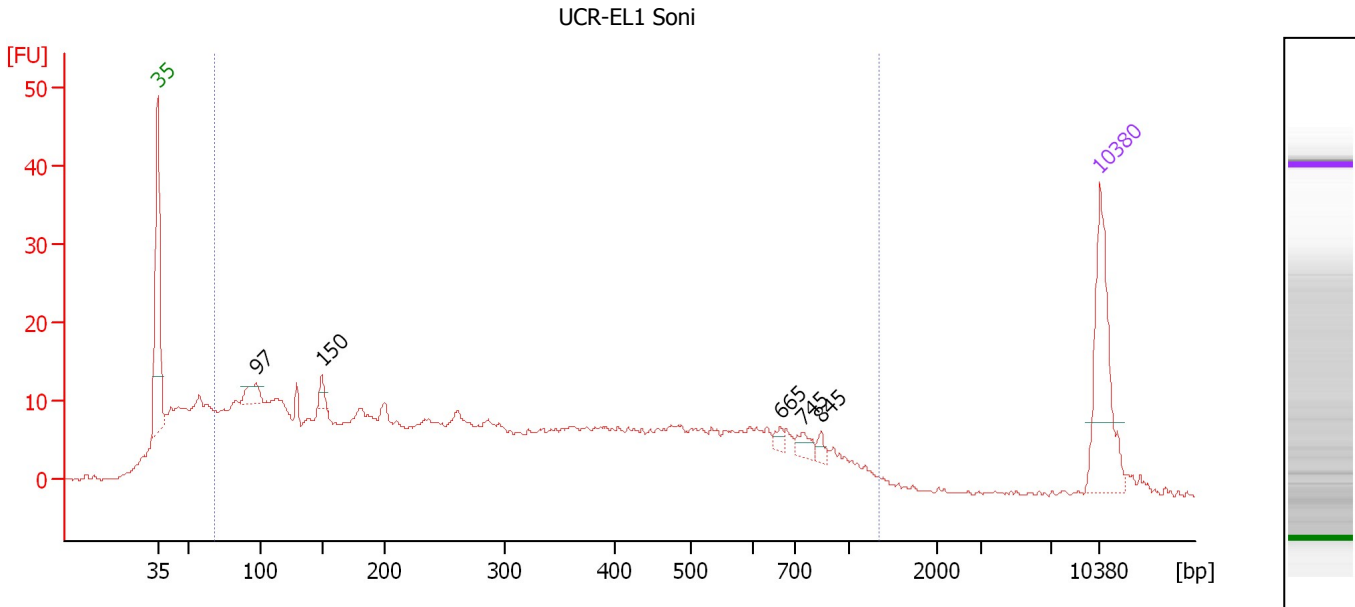
From [bp]	To [bp]	Average Size [bp]	Molarity [pmol/l]	Conc. [pg/μl]	Corr. Area	% of Total	Size distribution in CV [%]	Color
50	1,594	302	97,761.3	10,066.35	3,426.6	94	76.1	



Assay Class: High Sensitivity DNA Assay  
 Data Path: C:\...ents and Settings\Bioanalyzer\2012-09-04\2012-09-04\_003.xad

Created: 9/4/2012 12:41:03 PM  
 Modified: 9/4/2012 1:25:38 PM

**Electropherogram Summary Continued ...**



**Setpoint Deviations for sample 11 : UCR-EL1 Soni**

Height Threshold [FU] : 2

**Overall Results for sample 11 : UCR-EL1 Soni**

Number of peaks found: 5                      Corr. Area 1: 557.9  
 Noise: 0.2

**Peak table for sample 11 : UCR-EL1 Soni**

Peak	Size [bp]	Conc. [pg/μl]	Molarity [pmol/l]	Observations
1	35	125.00	5,411.3	Lower Marker
2	97	19.62	305.9	
3	150	10.62	107.6	
4	665	5.72	13.0	
5	745	10.37	21.1	
6	845	5.85	10.5	
7	10,380	75.00	10.9	Upper Marker

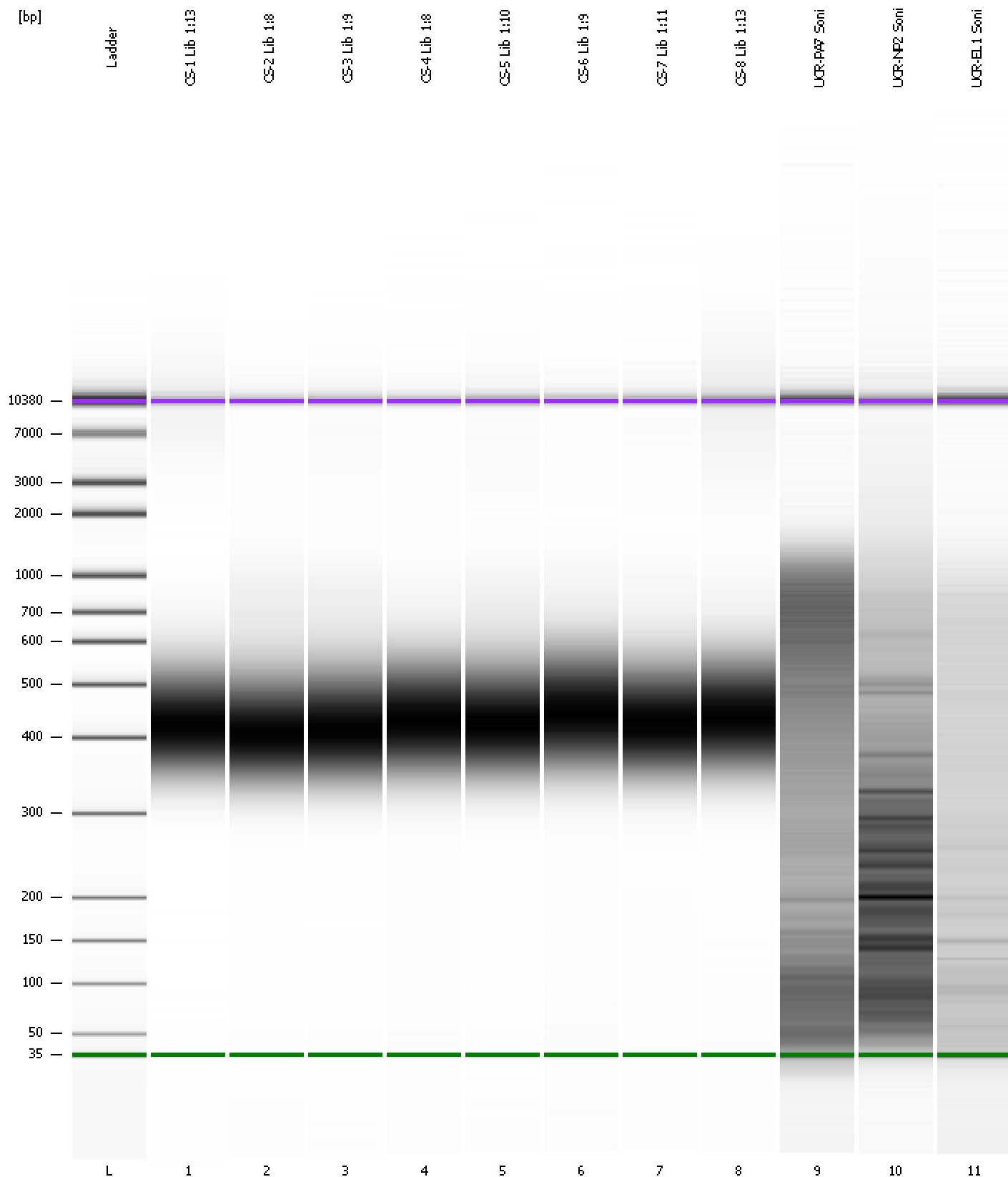
**Region table for sample 11 : UCR-EL1 Soni**

From [bp]	To [bp]	Average Size [bp]	Molarity [pmol/l]	Conc. [pg/μl]	Corr. Area	% of Total	Size distribution in CV [%]	Color
68	1,361	352	14,203.6	1,688.96	557.9	85	66.5	Blue

Assay Class: High Sensitivity DNA Assay  
Data Path: C:\...ents and Settings\Bioanalyzer\2012-09-04\2012-09-04\_003.xad

Created: 9/4/2012 12:41:03 PM  
Modified: 9/4/2012 1:25:38 PM

**Gel Image**

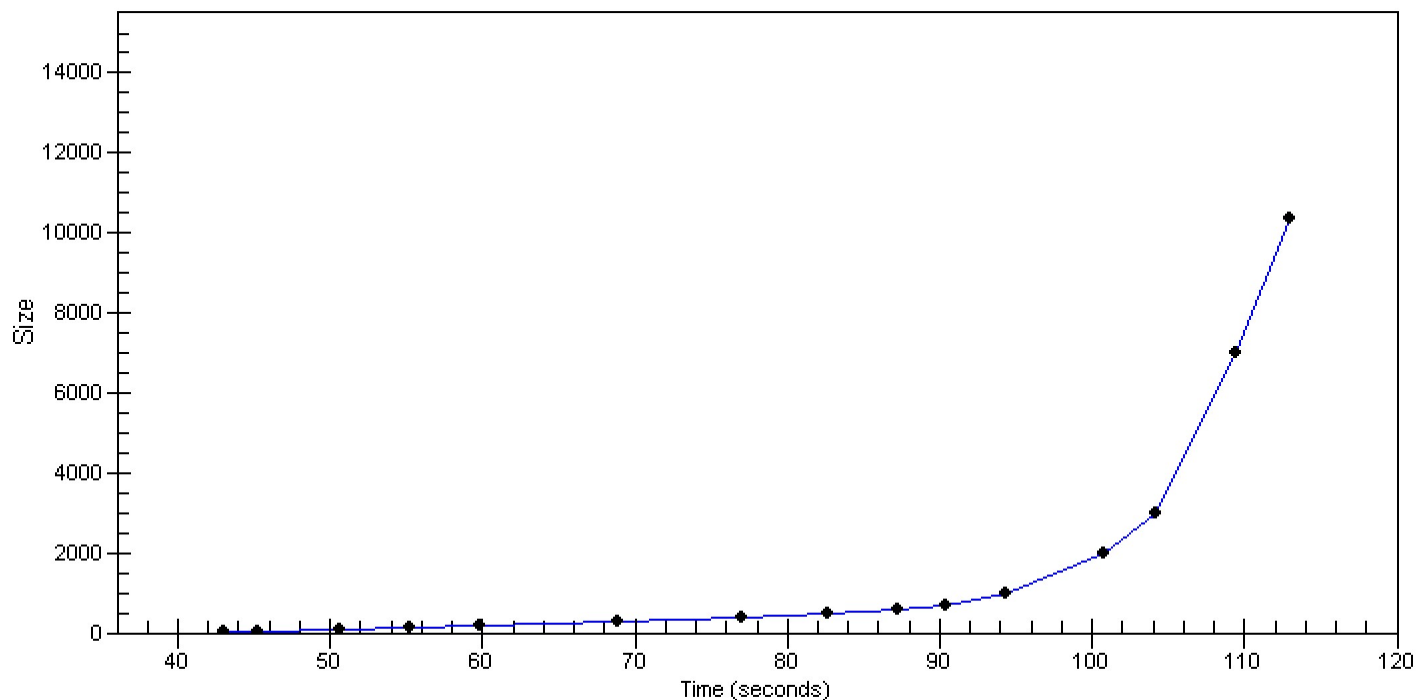


Assay Class: High Sensitivity DNA Assay  
Data Path: C:\...ents and Settings\Bioanalyzer\2012-09-04\2012-09-04\_003.xad

Created: 9/4/2012 12:41:03 PM  
Modified: 9/4/2012 1:25:38 PM

**Curves**

**Standard Curve**



Assay Class: High Sensitivity DNA Assay  
 Data Path: C:\...ents and Settings\Bioanalyzer\2012-09-04\2012-09-04\_003.xad

Created: 9/4/2012 12:41:03 PM  
 Modified: 9/4/2012 1:25:38 PM

**Run Logbook**

Description	Number	Source	Category	Sub Category	Time	Time Zone	User	Host
Run ended on port 1 (Number of wells acquired: 12)		Instrument	Run		9/4/2012 1:22:22 PM	(GMT --07:00) Pacific Standard Time	UC Davis	D8XSMGH1
Run started on port 1 (File: C:\Documents and Settings\Bioanalyzer\2012-09-04\2012-09-04_003.xad)		Instrument	Run		9/4/2012 12:41:09 PM	(GMT --07:00) Pacific Standard Time	UC Davis	D8XSMGH1
Product Number : G2938B		Instrument	Run		9/4/2012 12:41:09 PM	(GMT --07:00) Pacific Standard Time	UC Davis	D8XSMGH1
Name :		Instrument	Run		9/4/2012 12:41:09 PM	(GMT --07:00) Pacific Standard Time	UC Davis	D8XSMGH1
Vendor : Agilent Technologies		Instrument	Run		9/4/2012 12:41:09 PM	(GMT --07:00) Pacific Standard Time	UC Davis	D8XSMGH1
Serial# : DE13701086		Instrument	Run		9/4/2012 12:41:09 PM	(GMT --07:00) Pacific Standard Time	UC Davis	D8XSMGH1
Firmware : C.01.069		Instrument	Run		9/4/2012 12:41:09 PM	(GMT --07:00) Pacific Standard Time	UC Davis	D8XSMGH1
Cartridge : Electrode		Instrument	Run		9/4/2012 12:41:09 PM	(GMT --07:00) Pacific Standard Time	UC Davis	D8XSMGH1