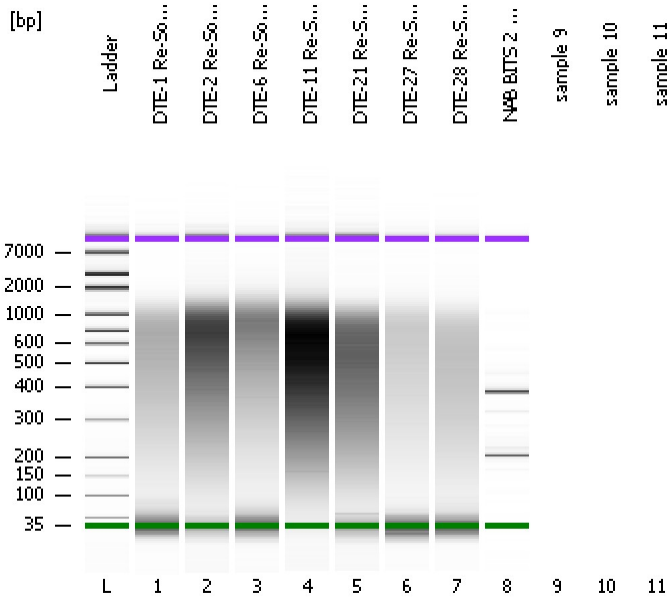


Assay Class: High Sensitivity DNA Assay
Data Path: C:\...ents and Settings\Bioanalyzer\2012-11-08\2012-11-08_003.xad

Created: 11/8/2012 4:19:45 PM
Modified: 11/8/2012 5:01:56 PM

Electrophoresis File Run Summary



Instrument Information:

Instrument Name: DE13701086 Firmware: C.01.069
Serial#: DE13701086 Type: G2938B

Assay Information:

Assay Origin Path: C:\Program Files\Agilent\2100 bioanalyzer\2100 expert\assays\dsDNA\High Sensitivity DNA.xsy
Assay Class: High Sensitivity DNA Assay
Version: 1.03
Assay Comments: Copyright © 2003-2010 Agilent Technologies

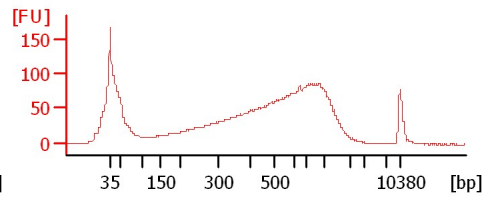
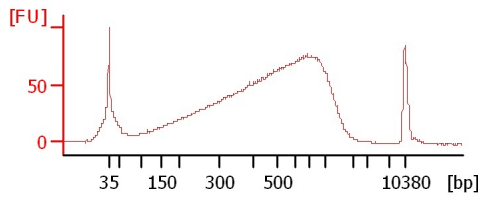
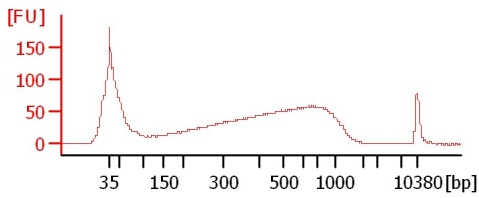
Chip Information:

Chip Lot #:
Reagent Kit Lot #:
Chip Comments:

DTE-1 Re-Soni 1:5

DTE-2 Re-Soni 1:5

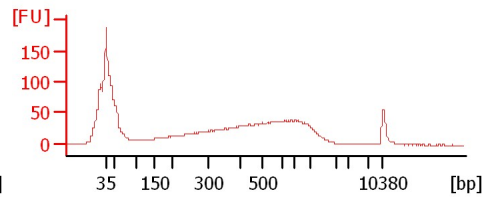
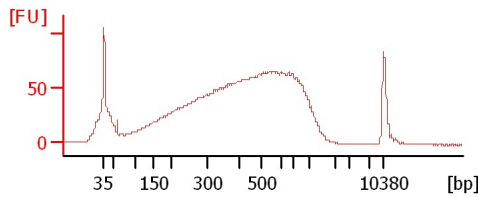
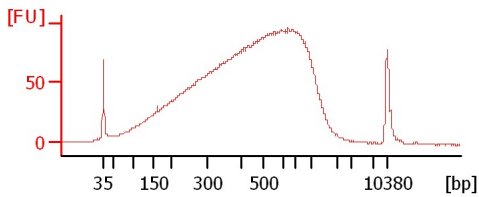
DTE-6 Re-Soni 1:5



DTE-11 Re-Soni 1:5

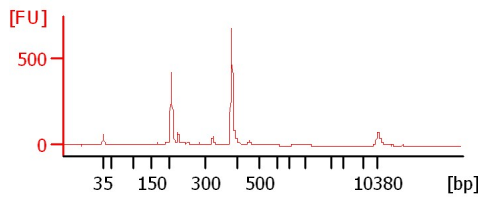
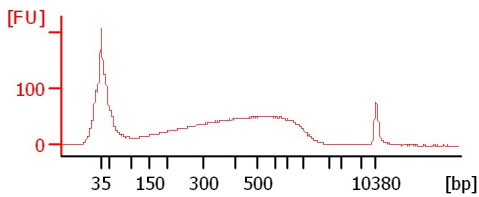
DTE-21 Re-Soni 1:5

DTE-27 Re-Soni 1:3



DTE-28 Re-Soni 1:4

NAB BITS 2 Amplicon 1:10



Assay Class: High Sensitivity DNA Assay
 Data Path: C:\...ents and Settings\Bioanalyzer\2012-11-08\2012-11-08_003.xad

Created: 11/8/2012 4:19:45 PM
 Modified: 11/8/2012 5:01:56 PM

Electrophoresis File Run Summary (Chip Summary)

Sample Name	Sample Comment	Rest. Digest	Status	Observation	Result Label	Result Color
DTE-1 Re-Soni 1:5		<input type="checkbox"/>	✓			
DTE-2 Re-Soni 1:5		<input type="checkbox"/>	✓			
DTE-6 Re-Soni 1:5		<input type="checkbox"/>	✓			
DTE-11 Re-Soni 1:5		<input type="checkbox"/>	✓			
DTE-21 Re-Soni 1:5		<input type="checkbox"/>	✓			
DTE-27 Re-Soni 1:3		<input type="checkbox"/>	✓			
DTE-28 Re-Soni 1:4		<input type="checkbox"/>	✓			
NAB BITS 2 Amplicon 1:10		<input type="checkbox"/>	✓			
sample 9		<input type="checkbox"/>				
sample 10		<input type="checkbox"/>				
sample 11		<input type="checkbox"/>				
Ladder		<input type="checkbox"/>	✓			

Chip Lot #

Reagent Kit Lot #

Chip Comments :

Assay Class: High Sensitivity DNA Assay
Data Path: C:\...ents and Settings\Bioanalyzer\2012-11-08\2012-11-08_003.xad

Created: 11/8/2012 4:19:45 PM
Modified: 11/8/2012 5:01:56 PM

Electrophoresis Assay Details

General Analysis Settings

Number of Available Sample and Ladder Wells (Max.) : 12
Minimum Visible Range [s] : 32
Maximum Visible Range [s] : 138
Start Analysis Time Range [s] : 33
End Analysis Time Range [s] : 137.5
Ladder Concentration [pg/μl] : 1950
Uses Standard Area for Ladder Fragments
Lower Marker Concentration [pg/μl] : 125
Upper Marker Concentration [pg/μl] : 75
Used Upper Marker for Quantitation
Standard Curve Fit is Point to Point
Show Data Aligned to Lower and Upper Marker

Integrator Settings

Integration Start Time [s] : 33.05
Integration End Time [s] : 137
Slope Threshold : 0.8
Height Threshold [FU] : 5
Area Threshold : 0.1
Width Threshold [s] : 0.6
Baseline Plateau [s] : 0.5

Filter Settings

Filter Width [s] : 0.5
Polynomial Order : 4

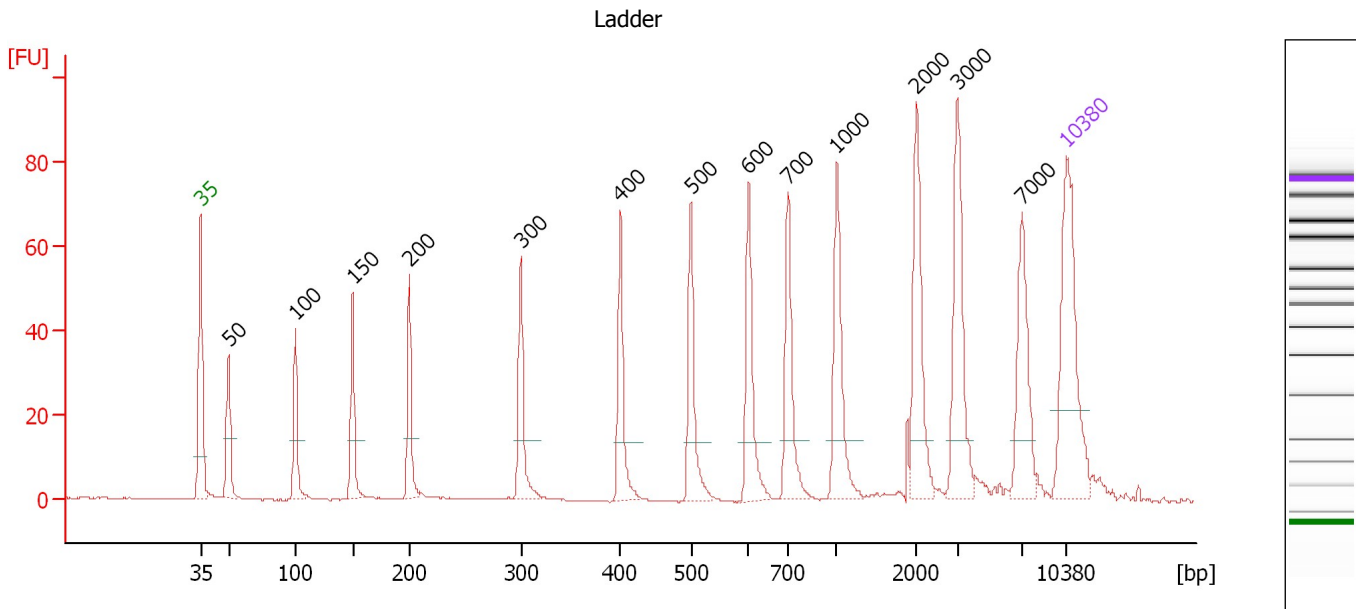
Ladder

Ladder Peak	Size	Area
1	35	160
2	50	210
3	100	208
4	150	221
5	200	242
6	300	270
7	400	305
8	500	306
9	600	336
10	700	321
11	1000	366
12	2000	413
13	3000	411
14	7000	400
15	10380	214

Assay Class: High Sensitivity DNA Assay
 Data Path: C:\...ents and Settings\Bioanalyzer\2012-11-08\2012-11-08_003.xad

Created: 11/8/2012 4:19:45 PM
 Modified: 11/8/2012 5:01:56 PM

Electropherogram Summary



Overall Results for Ladder

Noise: 0.2

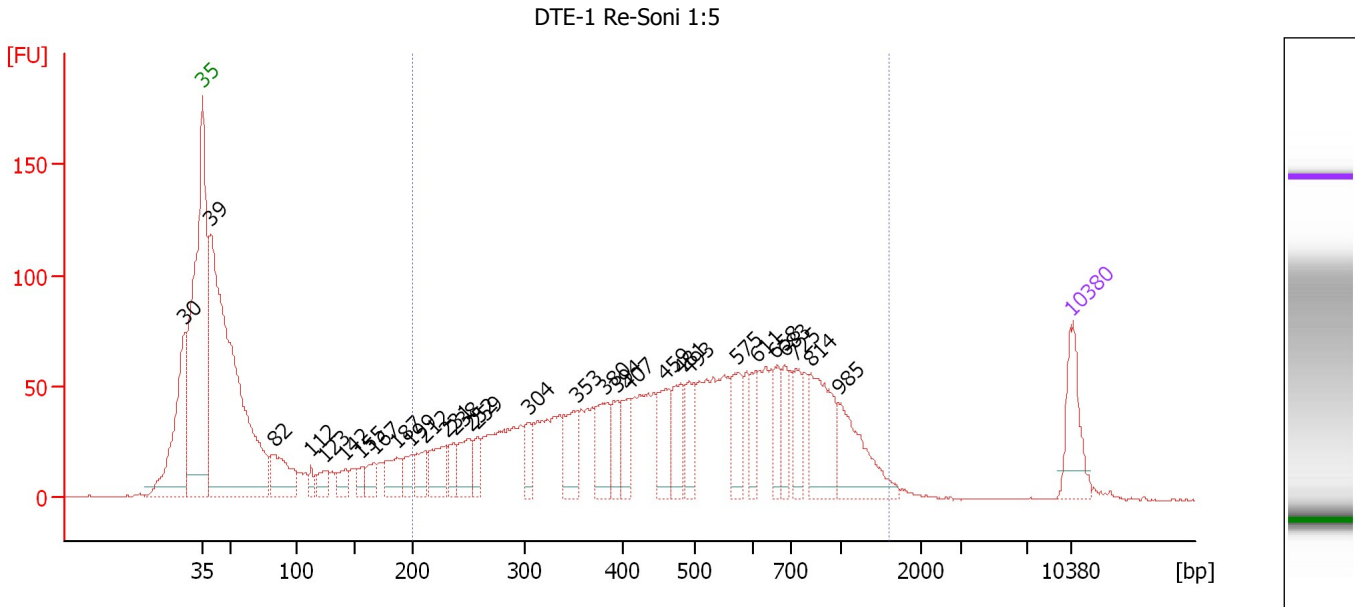
Peak table for Ladder

Peak	Size [bp]	Conc. [pg/μl]	Molarity [pmol/l]	Observations
1	35	125.00	5,411.3	Lower Marker
2	50	150.00	4,545.5	Ladder Peak
3	100	150.00	2,272.7	Ladder Peak
4	150	150.00	1,515.2	Ladder Peak
5	200	150.00	1,136.4	Ladder Peak
6	300	150.00	757.6	Ladder Peak
7	400	150.00	568.2	Ladder Peak
8	500	150.00	454.5	Ladder Peak
9	600	150.00	378.8	Ladder Peak
10	700	150.00	324.7	Ladder Peak
11	1,000	150.00	227.3	Ladder Peak
12	2,000	150.00	113.6	Ladder Peak
13	3,000	150.00	75.8	Ladder Peak
14	7,000	150.00	32.5	Ladder Peak
15	10,380	75.00	10.9	Upper Marker

Assay Class: High Sensitivity DNA Assay
 Data Path: C:\...ents and Settings\Bioanalyzer\2012-11-08\2012-11-08_003.xad

Created: 11/8/2012 4:19:45 PM
 Modified: 11/8/2012 5:01:56 PM

Electropherogram Summary Continued ...



Overall Results for sample 1 : DTE-1 Re-Soni 1:5

Number of peaks found: 30 Corr. Area 1: 2,069.4
 Noise: 0.2

Peak table for sample 1 : DTE-1 Re-Soni 1:5

Peak	Size [bp]	Conc. [pg/μl]	Molarity [pmol/l]	Observations
1	30	0.00	0.0	
2	35	125.00	5,411.3	Lower Marker
3	39	1,308.93	50,746.2	
4	82	134.40	2,478.6	
5	112	22.98	311.9	
6	123	37.97	466.6	
7	142	38.99	417.3	
8	155	31.17	304.2	
9	167	36.58	332.5	
10	187	70.72	573.9	
11	199	39.43	300.8	
12	212	52.12	373.1	
13	231	80.95	532.1	
14	238	40.57	258.5	
15	252	77.96	469.2	
16	259	34.90	204.5	
17	304	48.00	238.9	
18	353	88.02	378.2	
19	380	88.15	351.3	
20	394	53.40	205.6	
21	407	56.54	210.4	
22	459	82.48	272.2	
23	481	77.72	245.1	
24	493	72.12	221.7	
25	575	78.82	207.9	
26	611	48.46	120.2	

Assay Class: High Sensitivity DNA Assay
 Data Path: C:\...ents and Settings\Bioanalyzer\2012-11-08\2012-11-08_003.xad


Created: 11/8/2012 4:19:45 PM
 Modified: 11/8/2012 5:01:56 PM

Electropherogram Summary Continued ...

... Peak table for sample 1 : DTE-1 Re-Soni 1:5

Peak	Size [bp]	Conc. [pg/μl]	Molarity [pmol/l]	Observations
27	658	60.10	138.3	
28	683	43.49	96.5	
29	725	54.92	114.8	
30	814	146.77	273.3	
31	985	123.27	189.6	
32	10,380	75.00	10.9	Upper Marker

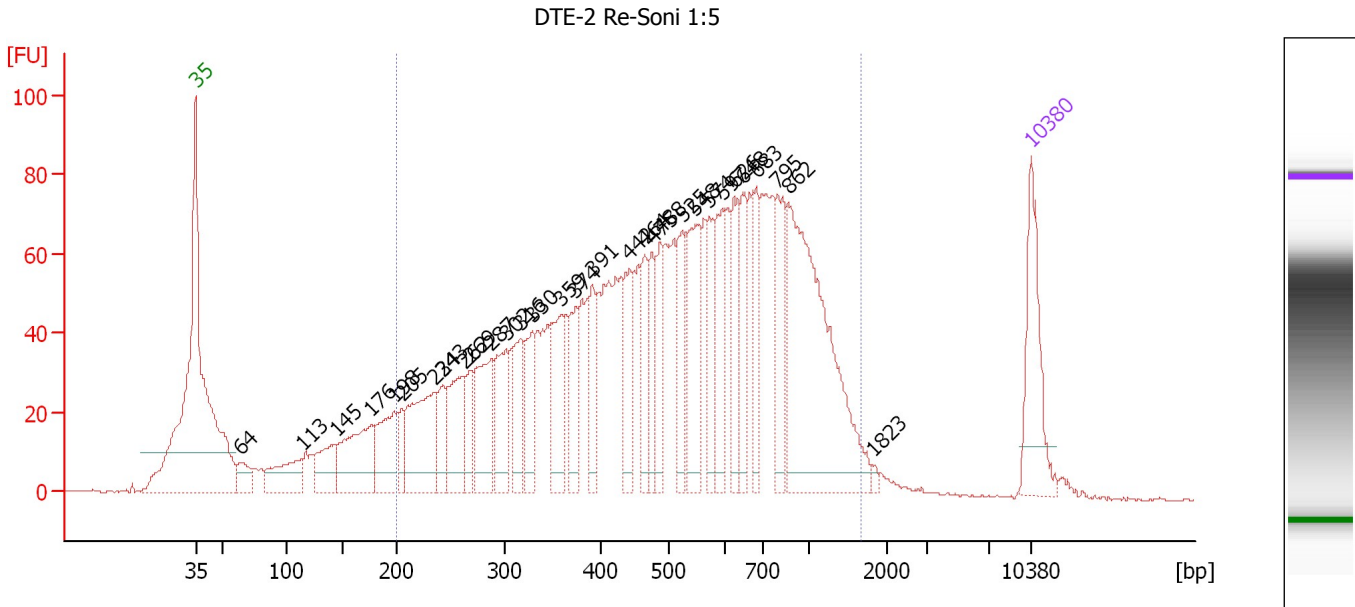
Region table for sample 1 : DTE-1 Re-Soni 1:5

From [bp]	To [bp]	Average Size [bp]	Molarity [pmol/l]	Conc. [pg/μl]	Corr. Area	% of Total	Size distribution in CV [%]	Color
200	1,591	540	9,264.5	2,495.24	2,069.4	62	47.3	

Assay Class: High Sensitivity DNA Assay
 Data Path: C:\...ents and Settings\Bioanalyzer\2012-11-08\2012-11-08_003.xad

Created: 11/8/2012 4:19:45 PM
 Modified: 11/8/2012 5:01:56 PM

Electropherogram Summary Continued ...



Overall Results for sample 2 : DTE-2 Re-Soni 1:5

Number of peaks found: 31 Corr. Area 1: 2,482.8
 Noise: 0.4

Peak table for sample 2 : DTE-2 Re-Soni 1:5

Peak	Size [bp]	Conc. [pg/μl]	Molarity [pmol/l]	Observations
1	35	125.00	5,411.3	Lower Marker
2	64	30.44	720.7	
3	113	70.14	936.4	
4	145	61.10	640.0	
5	176	116.15	998.2	
6	198	82.67	633.3	
7	205	28.65	211.5	
8	234	134.87	871.7	
9	243	43.03	268.4	
10	262	87.73	507.0	
11	269	40.87	230.1	
12	287	102.76	541.6	
13	302	81.22	407.4	
14	316	57.87	277.1	
15	330	64.17	294.9	
16	359	82.13	346.6	
17	374	54.50	220.8	
18	391	47.75	184.9	
19	442	63.35	216.9	
20	464	51.59	168.3	
21	475	48.07	153.2	
22	488	56.90	176.6	
23	525	68.48	197.8	
24	548	105.63	292.2	
25	574	60.03	158.6	
26	597	62.89	159.7	

Assay Class: High Sensitivity DNA Assay
 Data Path: C:\...ents and Settings\Bioanalyzer\2012-11-08\2012-11-08_003.xad

Created: 11/8/2012 4:19:45 PM
 Modified: 11/8/2012 5:01:56 PM

Electropherogram Summary Continued ...

... Peak table for sample 2 : DTE-2 Re-Soni 1:5

Peak	Size [bp]	Conc. [pg/µl]	Molarity [pmol/l]	Observations
27	626	61.53	149.0	
28	648	55.00	128.6	
29	683	55.93	124.0	
30	795	73.84	140.8	
31	862	310.66	546.0	
32	1,823	3.47	2.9	
33	▶ 10,380	75.00	10.9	Upper Marker

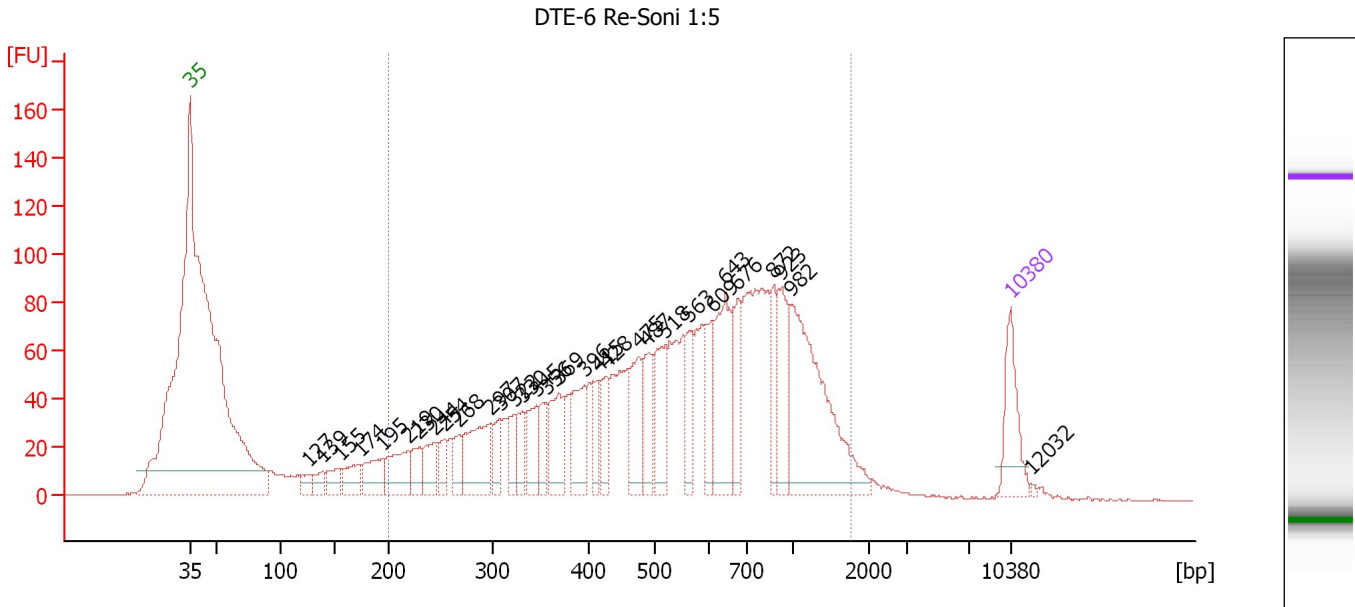
Region table for sample 2 : DTE-2 Re-Soni 1:5

From [bp]	To [bp]	Average Size [bp]	Molarity [pmol/l]	Conc. [pg/µl]	Corr. Area	% of Total	Size distribution in CV [%]	Color
200	1,659	571	9,635.8	2,697.93	2,482.8	88	48.7	

Assay Class: High Sensitivity DNA Assay
 Data Path: C:\...ents and Settings\Bioanalyzer\2012-11-08\2012-11-08_003.xad

Created: 11/8/2012 4:19:45 PM
 Modified: 11/8/2012 5:01:56 PM

Electropherogram Summary Continued ...



Overall Results for sample 3 : DTE-6 Re-Soni 1:5

Number of peaks found: 31 Corr. Area 1: 2,485.3
 Noise: 0.3

Peak table for sample 3 : DTE-6 Re-Soni 1:5

Peak	Size [bp]	Conc. [pg/μl]	Molarity [pmol/l]	Observations
1	35	125.00	5,411.3	Lower Marker
2	127	27.95	333.7	
3	139	32.33	353.3	
4	155	42.26	412.2	
5	174	54.04	471.3	
6	195	72.30	562.8	
7	219	94.09	651.6	
8	230	51.28	338.0	
9	244	63.02	391.3	
10	254	44.13	263.1	
11	268	48.78	276.0	
12	297	145.06	740.0	
13	307	44.01	217.4	
14	322	45.50	214.1	
15	330	49.27	225.9	
16	345	74.89	328.8	
17	356	51.42	218.9	
18	369	102.67	421.8	
19	396	94.96	363.4	
20	415	46.50	169.8	
21	428	58.30	206.5	
22	475	95.98	306.2	
23	487	83.41	259.6	
24	518	96.20	281.3	
25	563	65.54	176.4	
26	609	69.98	174.2	

Assay Class: High Sensitivity DNA Assay
 Data Path: C:\...ents and Settings\Bioanalyzer\2012-11-08\2012-11-08_003.xad


Created: 11/8/2012 4:19:45 PM
 Modified: 11/8/2012 5:01:56 PM

Electropherogram Summary Continued ...

... Peak table for sample 3 : DTE-6 Re-Soni 1:5

Peak	Size [bp]	Conc. [pg/μl]	Molarity [pmol/l]	Observations
27	643	160.11	377.3	
28	676	88.04	197.4	
29	872	61.69	107.2	
30	923	103.16	169.3	
31	982	314.57	485.4	
32	10,380	75.00	10.9	Upper Marker
33	12,032	0.00	0.0	

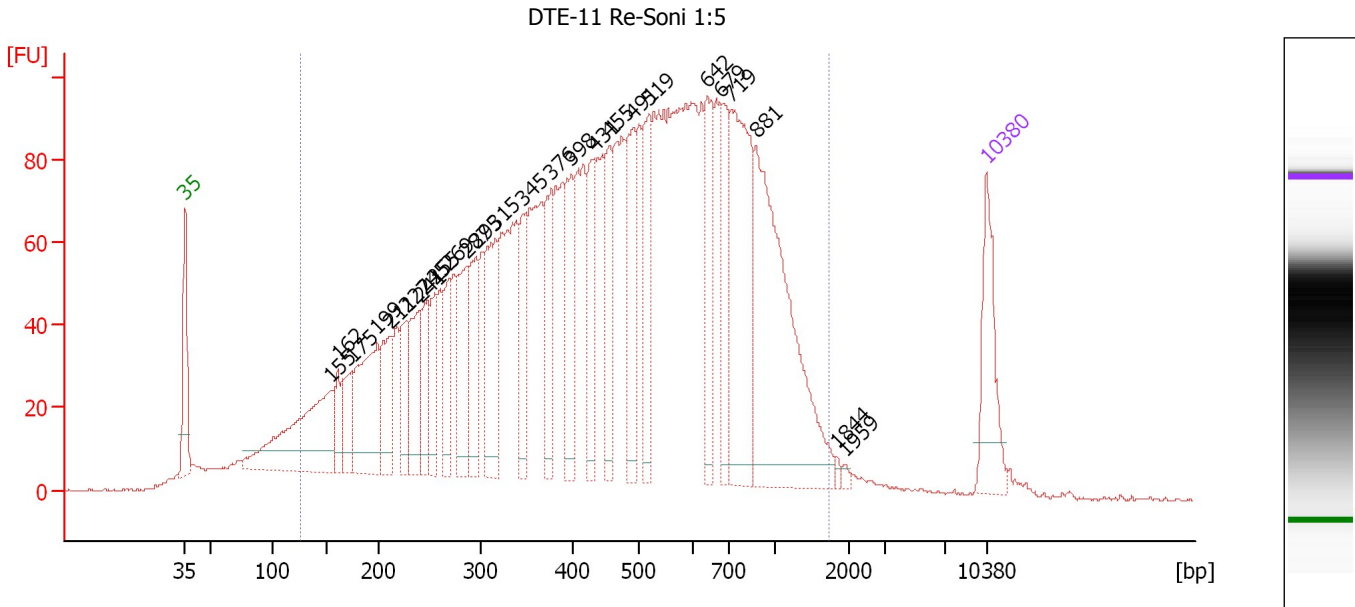
Region table for sample 3 : DTE-6 Re-Soni 1:5

From [bp]	To [bp]	Average Size [bp]	Molarity [pmol/l]	Conc. [pg/μl]	Corr. Area	% of Total	Size distribution in CV [%]	Color
200	1,758	627	10,197.8	3,042.27	2,485.3	90	50.8	

Assay Class: High Sensitivity DNA Assay
 Data Path: C:\...ents and Settings\Bioanalyzer\2012-11-08\2012-11-08_003.xad

Created: 11/8/2012 4:19:45 PM
 Modified: 11/8/2012 5:01:56 PM

Electropherogram Summary Continued ...



Overall Results for sample 4 : DTE-11 Re-Soni 1:5

Number of peaks found: 26 Corr. Area 1: 3,819.8
 Noise: 0.2

Peak table for sample 4 : DTE-11 Re-Soni 1:5

Peak	Size [bp]	Conc. [pg/μl]	Molarity [pmol/l]	Observations
1	35	125.00	5,411.3	Lower Marker
2	155	269.08	2,628.1	
3	162	41.58	389.5	
4	175	63.97	553.9	
5	199	175.34	1,332.0	
6	211	90.41	648.3	
7	227	68.13	454.1	
8	241	99.75	627.8	
9	245	64.33	397.1	
10	255	74.67	443.3	
11	269	63.47	358.0	
12	287	109.89	580.6	
13	295	87.38	448.8	
14	315	131.38	631.5	
15	345	71.76	314.9	
16	376	88.86	358.2	
17	398	95.45	363.6	
18	431	92.25	324.1	
19	455	82.50	274.8	
20	491	114.58	353.6	
21	519	108.68	317.3	
22	642	102.17	241.0	
23	679	95.80	213.9	
24	719	244.79	515.8	
25	881	349.40	600.9	
26	1,844	3.99	3.3	

Assay Class: High Sensitivity DNA Assay
 Data Path: C:\...ents and Settings\Bioanalyzer\2012-11-08\2012-11-08_003.xad

Created: 11/8/2012 4:19:45 PM
 Modified: 11/8/2012 5:01:56 PM

Electropherogram Summary Continued ...

... Peak table for sample 4 : DTE-11 Re-Soni 1:5

Peak	Size [bp]	Conc. [pg/μl]	Molarity [pmol/l]	Observations
27	1,959	3.78	2.9	
28	10,380	75.00	10.9	Upper Marker

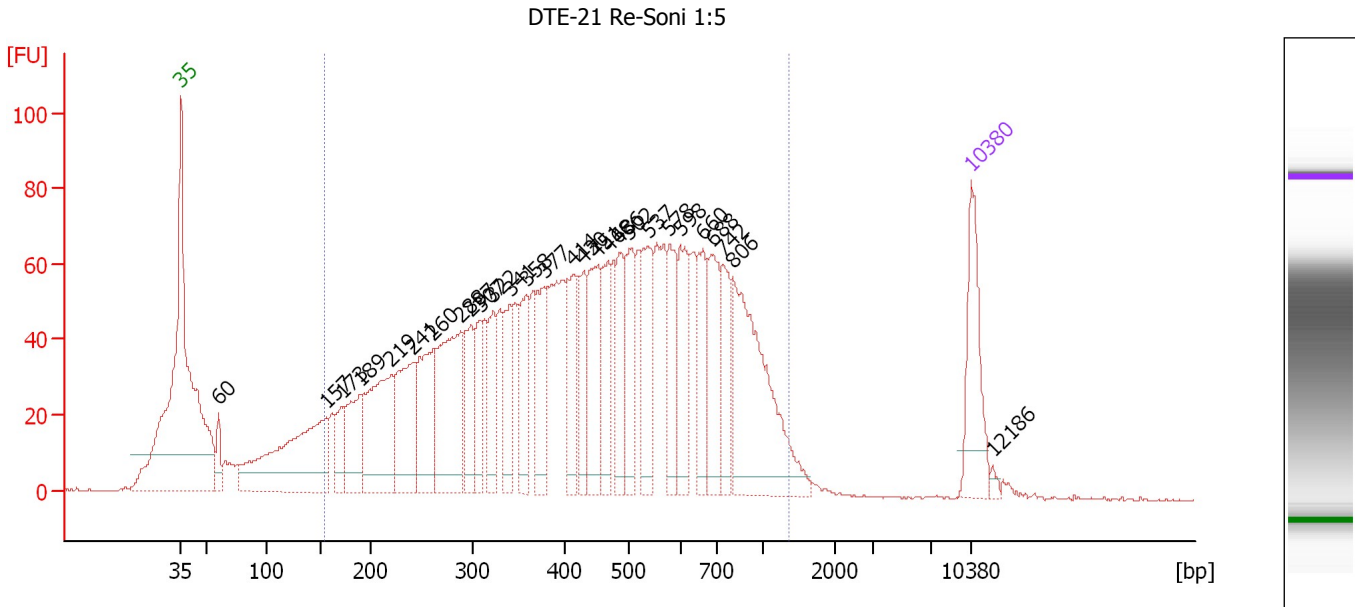
Region table for sample 4 : DTE-11 Re-Soni 1:5

From [bp]	To [bp]	Average Size [bp]	Molarity [pmol/l]	Conc. [pg/μl]	Corr. Area	% of Total	Size distribution in CV [%]	Color
126	1,734	515	21,315.7	4,873.60	3,819.8	94	53.4	

Assay Class: High Sensitivity DNA Assay
 Data Path: C:\...ents and Settings\Bioanalyzer\2012-11-08\2012-11-08_003.xad

Created: 11/8/2012 4:19:45 PM
 Modified: 11/8/2012 5:01:56 PM

Electropherogram Summary Continued ...



Overall Results for sample 5 : DTE-21 Re-Soni 1:5

Number of peaks found: 28 Corr. Area 1: 2,641.1
 Noise: 0.4

Peak table for sample 5 : DTE-21 Re-Soni 1:5

Peak	Size [bp]	Conc. [pg/μl]	Molarity [pmol/l]	Observations
1	35	125.00	5,411.3	Lower Marker
2	60	28.87	730.8	
3	157	281.67	2,725.4	
4	173	43.62	382.9	
5	189	97.68	782.5	
6	219	181.23	1,251.7	
7	241	139.22	875.8	
8	260	128.75	749.6	
9	288	192.69	1,013.7	
10	297	70.03	356.7	
11	307	55.03	271.5	
12	322	66.97	314.8	
13	341	62.93	279.6	
14	358	75.51	319.5	
15	377	91.70	368.2	
16	414	79.64	291.8	
17	430	55.74	196.3	
18	451	104.67	351.7	
19	468	72.66	235.1	
20	486	66.21	206.5	
21	502	78.70	237.6	
22	537	91.67	258.5	
23	578	71.20	186.7	
24	598	79.45	201.2	
25	660	64.43	148.0	
26	688	87.61	193.0	

Assay Class: High Sensitivity DNA Assay
 Data Path: C:\...ents and Settings\Bioanalyzer\2012-11-08\2012-11-08_003.xad


Created: 11/8/2012 4:19:45 PM
 Modified: 11/8/2012 5:01:56 PM

Electropherogram Summary Continued ...

... Peak table for sample 5 : DTE-21 Re-Soni 1:5

Peak	Size [bp]	Conc. [pg/μl]	Molarity [pmol/l]	Observations
27	742	62.13	126.9	
28	806	226.11	425.1	
29	10,380	75.00	10.9	Upper Marker
30	12,186	0.00	0.0	

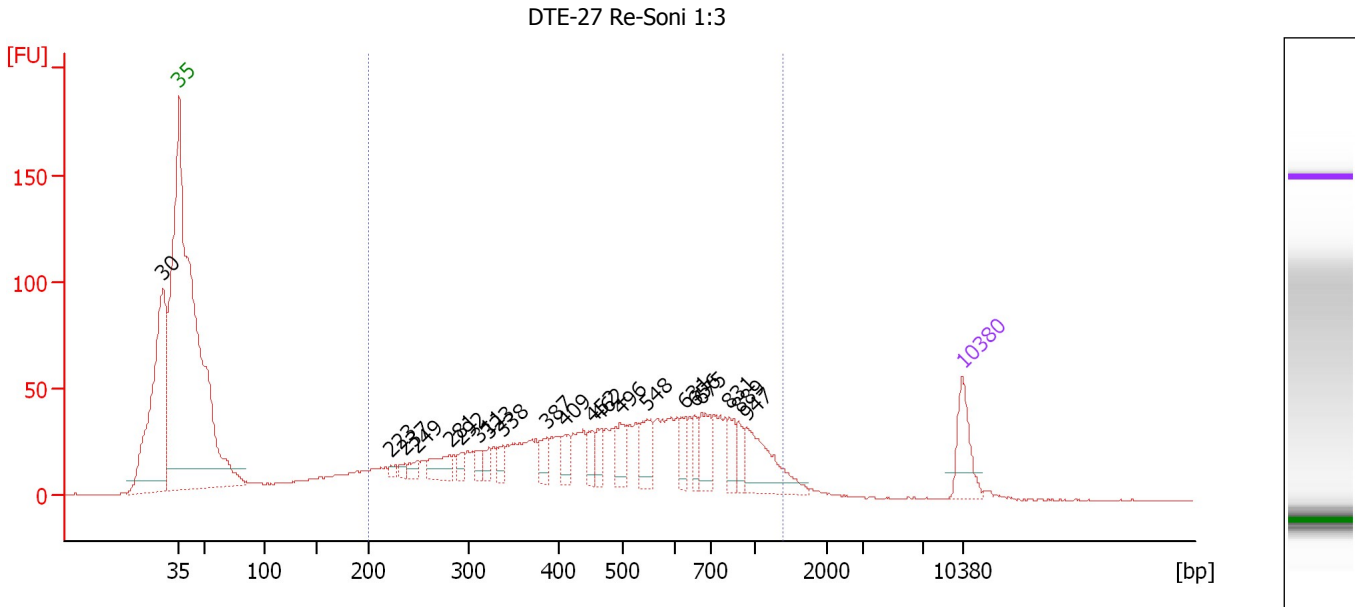
Region table for sample 5 : DTE-21 Re-Soni 1:5

From [bp]	To [bp]	Average Size [bp]	Molarity [pmol/l]	Conc. [pg/μl]	Corr. Area	% of Total	Size distribution in CV [%]	Color
154	1,373	482	13,033.4	3,037.20	2,641.1	91	46.4	

Assay Class: High Sensitivity DNA Assay
 Data Path: C:\...ents and Settings\Bioanalyzer\2012-11-08\2012-11-08_003.xad

Created: 11/8/2012 4:19:45 PM
 Modified: 11/8/2012 5:01:56 PM

Electropherogram Summary Continued ...



Overall Results for sample 6 : DTE-27 Re-Soni 1:3

Number of peaks found: 21 Corr. Area 1: 1,297.6
 Noise: 0.3

Peak table for sample 6 : DTE-27 Re-Soni 1:3

Peak	Size [bp]	Conc. [pg/μl]	Molarity [pmol/l]	Observations
1	30	0.00	0.0	
2	35	125.00	5,411.3	Lower Marker
3	223	13.90	94.3	
4	237	14.06	89.9	
5	249	26.26	159.6	
6	281	69.84	376.0	
7	292	24.52	127.2	
8	311	25.06	122.3	
9	323	23.75	111.4	
10	338	25.31	113.4	
11	387	42.18	165.2	
12	409	42.35	156.9	
13	452	39.72	133.0	
14	462	41.08	134.8	
15	496	57.73	176.4	
16	548	74.24	205.1	
17	631	35.94	86.4	
18	656	36.62	84.6	
19	675	72.13	161.8	
20	831	43.46	79.2	
21	889	30.17	51.4	
22	947	132.93	212.7	
23	10,380	75.00	10.9	Upper Marker

Assay Class: High Sensitivity DNA Assay
Data Path: C:\...ents and Settings\Bioanalyzer\2012-11-08\2012-11-08_003.xad

Created: 11/8/2012 4:19:45 PM
Modified: 11/8/2012 5:01:56 PM

Electropherogram Summary Continued ...

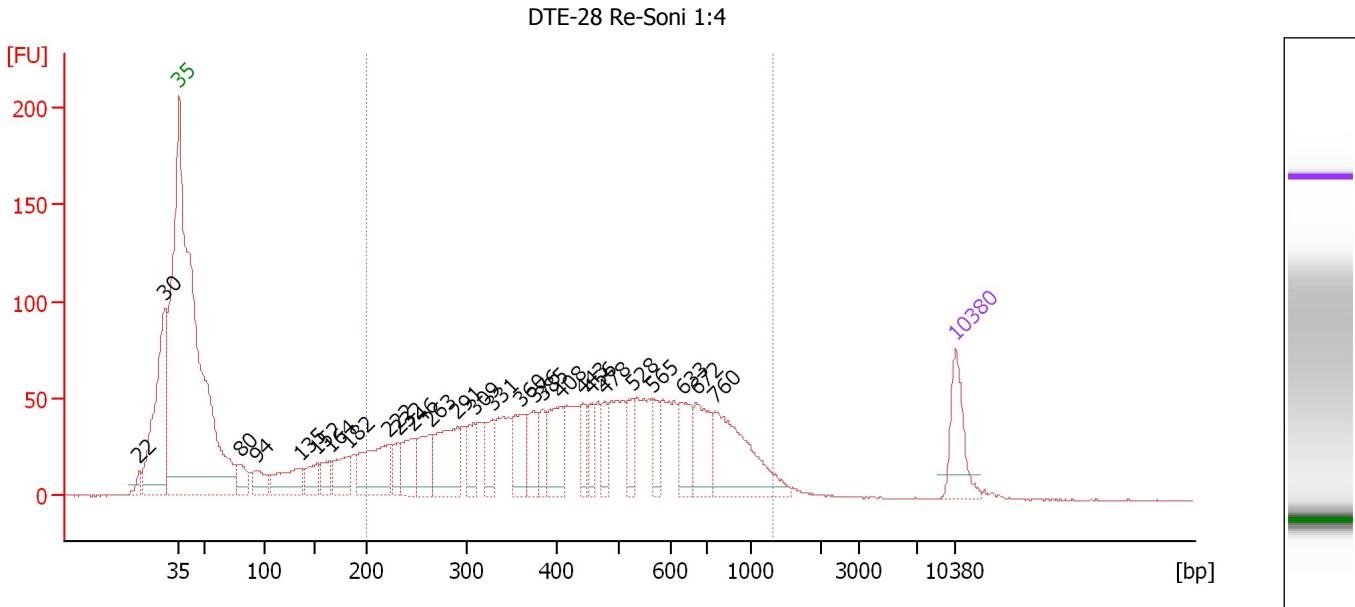
... Region table for sample 6 : DTE-27 Re-Soni 1:3

From [bp]	To [bp]	Average Size [bp]	Molarity [pmol/l]	Conc. [pg/μl]	Corr. Area	% of Total	Size distribution in CV [%]	Color
200	1,393	537	7,751.6	2,097.59	1,297.6	69	45.0	■

Assay Class: High Sensitivity DNA Assay
 Data Path: C:\...ents and Settings\Bioanalyzer\2012-11-08\2012-11-08_003.xad

Created: 11/8/2012 4:19:45 PM
 Modified: 11/8/2012 5:01:56 PM

Electropherogram Summary Continued ...



Overall Results for sample 7 : DTE-28 Re-Soni 1:4

Number of peaks found: 27 Corr. Area 1: 1,931.0
 Noise: 0.3

Peak table for sample 7 : DTE-28 Re-Soni 1:4

Peak	Size [bp]	Conc. [pg/μl]	Molarity [pmol/l]	Observations
1	22	0.00	0.0	
2	30	0.00	0.0	
3	35	125.00	5,411.3	Lower Marker
4	80	57.49	1,089.0	
5	94	59.45	960.2	
6	135	109.20	1,224.5	
7	152	55.96	559.1	
8	164	43.76	403.6	
9	182	82.08	682.8	
10	222	176.07	1,199.6	
11	232	46.80	305.7	
12	246	87.11	535.7	
13	263	86.64	498.3	
14	291	164.24	854.7	
15	309	56.44	277.1	
16	331	59.34	272.0	
17	360	86.65	364.9	
18	376	76.17	306.6	
19	385	43.15	169.6	
20	408	104.79	389.1	
21	443	46.47	158.8	
22	456	42.99	142.8	
23	478	43.04	136.4	
24	528	51.47	147.7	
25	565	45.54	122.1	
26	633	80.61	192.9	

Assay Class: High Sensitivity DNA Assay
 Data Path: C:\...ents and Settings\Bioanalyzer\2012-11-08\2012-11-08_003.xad

Created: 11/8/2012 4:19:45 PM
 Modified: 11/8/2012 5:01:56 PM

Electropherogram Summary Continued ...

... Peak table for sample 7 : DTE-28 Re-Soni 1:4

Peak	Size [bp]	Conc. [pg/μl]	Molarity [pmol/l]	Observations
27	672	95.21	214.6	
28	760	199.19	396.9	
29	10,380	75.00	10.9	Upper Marker

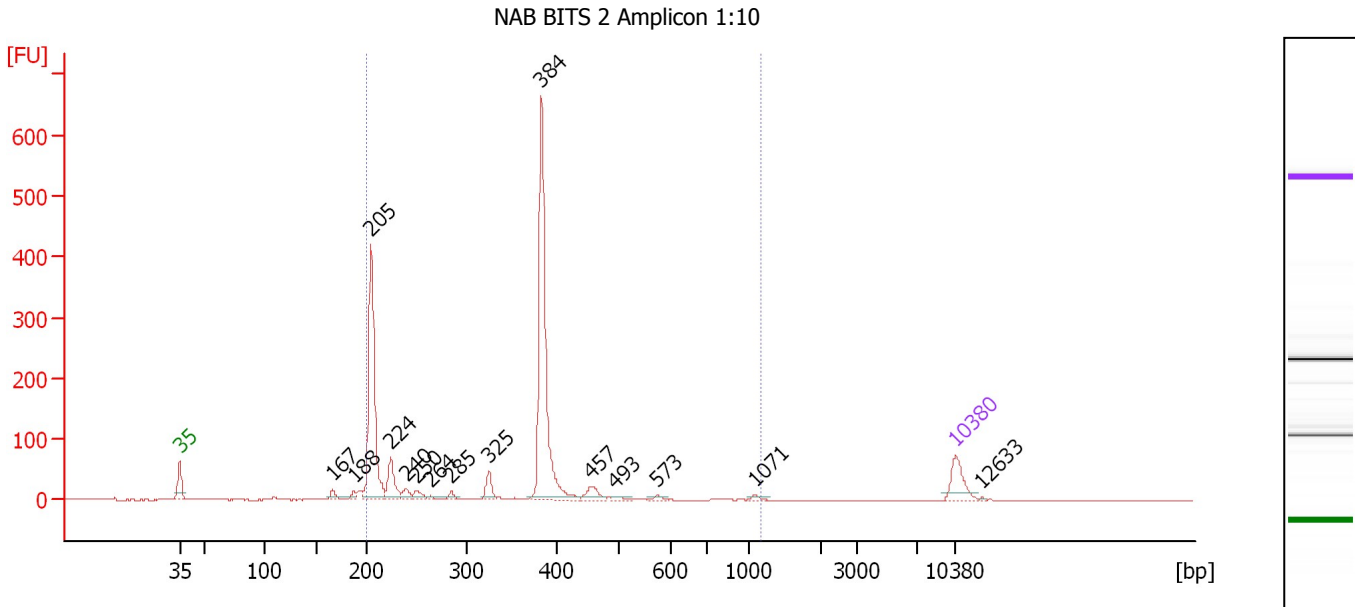
Region table for sample 7 : DTE-28 Re-Soni 1:4

From [bp]	To [bp]	Average Size [bp]	Molarity [pmol/l]	Conc. [pg/μl]	Corr. Area	% of Total	Size distribution in CV [%]	Color
200	1,324	487	8,972.2	2,266.01	1,931.0	73	43.2	

Assay Class: High Sensitivity DNA Assay
 Data Path: C:\...ents and Settings\Bioanalyzer\2012-11-08\2012-11-08_003.xad

Created: 11/8/2012 4:19:45 PM
 Modified: 11/8/2012 5:01:56 PM

Electropherogram Summary Continued ...



Overall Results for sample 8 : NAB BITS 2 Amplicon 1:10

Number of peaks found: 15 Corr. Area 1: 1,375.7
 Noise: 0.2

Peak table for sample 8 : NAB BITS 2 Amplicon 1:10

Peak	Size [bp]	Conc. [pg/μl]	Molarity [pmol/l]	Observations
1	35	125.00	5,411.3	Lower Marker
2	167	25.25	229.7	
3	188	19.73	159.4	
4	205	695.16	5,149.9	
5	224	118.25	798.9	
6	240	32.59	206.0	
7	250	31.18	188.7	
8	264	7.96	45.7	
9	285	17.70	94.1	
10	325	53.31	248.5	
11	384	794.79	3,134.6	
12	457	46.25	153.3	
13	493	12.35	37.9	
14	573	10.00	26.4	
15	1,071	8.96	12.7	
16	10,380	75.00	10.9	Upper Marker
17	12,633	0.00	0.0	

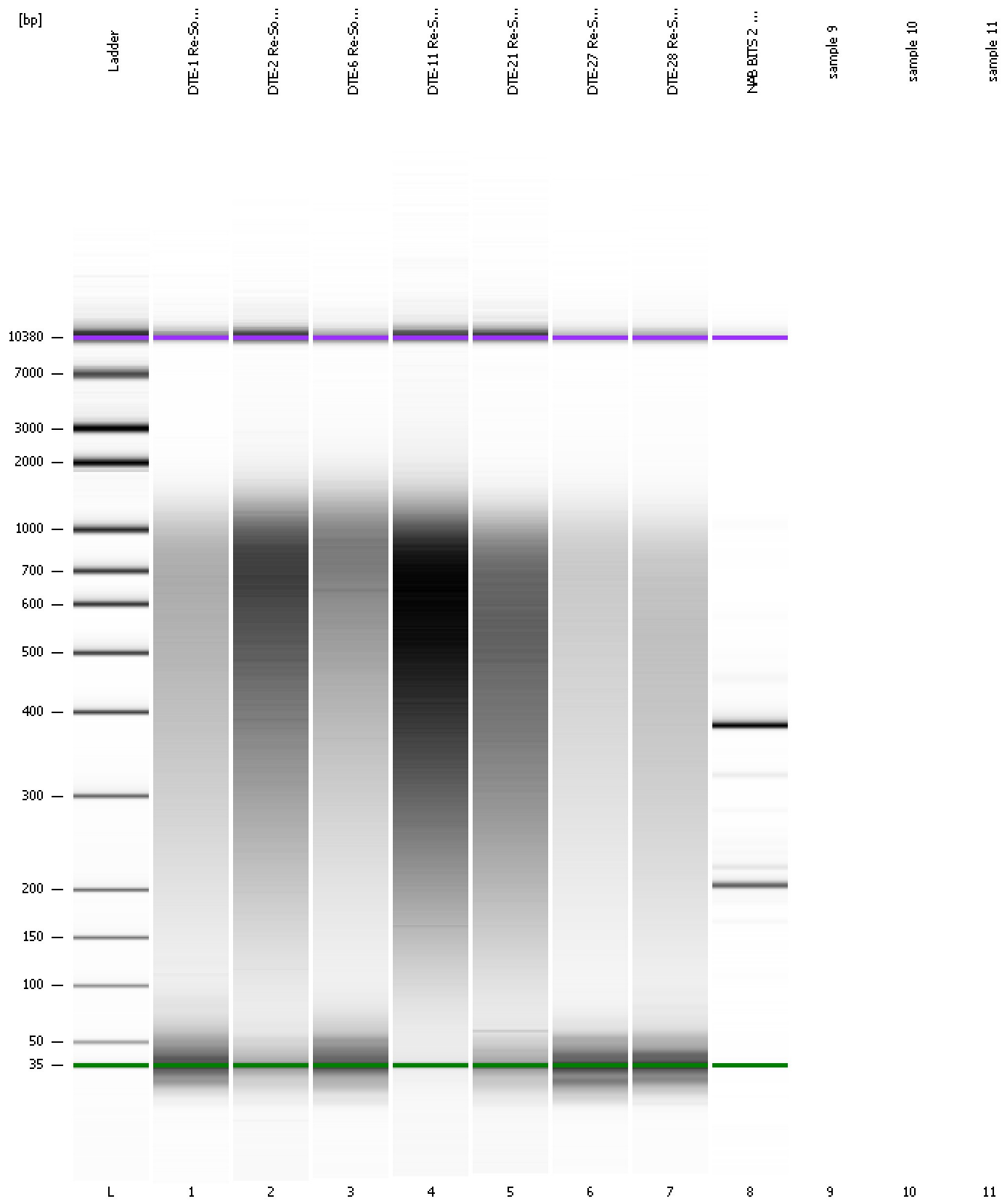
Region table for sample 8 : NAB BITS 2 Amplicon 1:10

From [bp]	To [bp]	Average Size [bp]	Molarity [pmol/l]	Conc. [pg/μl]	Corr. Area	% of Total	Size distribution in CV [%]	Color
200	1,167	334	10,121.1	1,879.00	1,375.7	93	36.1	Blue

Assay Class: High Sensitivity DNA Assay
Data Path: C:\...ents and Settings\Bioanalyzer\2012-11-08\2012-11-08_003.xad

Created: 11/8/2012 4:19:45 PM
Modified: 11/8/2012 5:01:56 PM

Gel Image



Assay Class: High Sensitivity DNA Assay
Data Path: C:\...ents and Settings\Bioanalyzer\2012-11-08\2012-11-08_003.xad

Created: 11/8/2012 4:19:45 PM
Modified: 11/8/2012 5:01:56 PM

Invalid Samples

Sample 9 has not been run, no results available.

Sample 10 has not been run, no results available.

Sample 11 has not been run, no results available.

Assay Class: High Sensitivity DNA Assay
 Data Path: C:\...ents and Settings\Bioanalyzer\2012-11-08\2012-11-08_003.xad

Created: 11/8/2012 4:19:45 PM
 Modified: 11/8/2012 5:01:56 PM

Run Logbook

Description	Number	Source	Category	Sub Category	Time	Time Zone	User	Host
Run ended on port 1 (Number of wells acquired: 9)		Instrument	Run		11/8/2012 4:52:30 PM	(GMT --08:00) Pacific Standard Time	UC Davis	D8XSMGH1
Run started on port 1 (File: C:\Documents and Settings\Bioanalyzer\2012-11-08\2012-11-08_003.xad)		Instrument	Run		11/8/2012 4:19:50 PM	(GMT --08:00) Pacific Standard Time	UC Davis	D8XSMGH1
Product Number : G2938B		Instrument	Run		11/8/2012 4:19:50 PM	(GMT --08:00) Pacific Standard Time	UC Davis	D8XSMGH1
Name :		Instrument	Run		11/8/2012 4:19:50 PM	(GMT --08:00) Pacific Standard Time	UC Davis	D8XSMGH1
Vendor : Agilent Technologies		Instrument	Run		11/8/2012 4:19:50 PM	(GMT --08:00) Pacific Standard Time	UC Davis	D8XSMGH1
Serial# : DE13701086		Instrument	Run		11/8/2012 4:19:50 PM	(GMT --08:00) Pacific Standard Time	UC Davis	D8XSMGH1
Firmware : C.01.069		Instrument	Run		11/8/2012 4:19:50 PM	(GMT --08:00) Pacific Standard Time	UC Davis	D8XSMGH1
Cartridge : Electrode		Instrument	Run		11/8/2012 4:19:50 PM	(GMT --08:00) Pacific Standard Time	UC Davis	D8XSMGH1