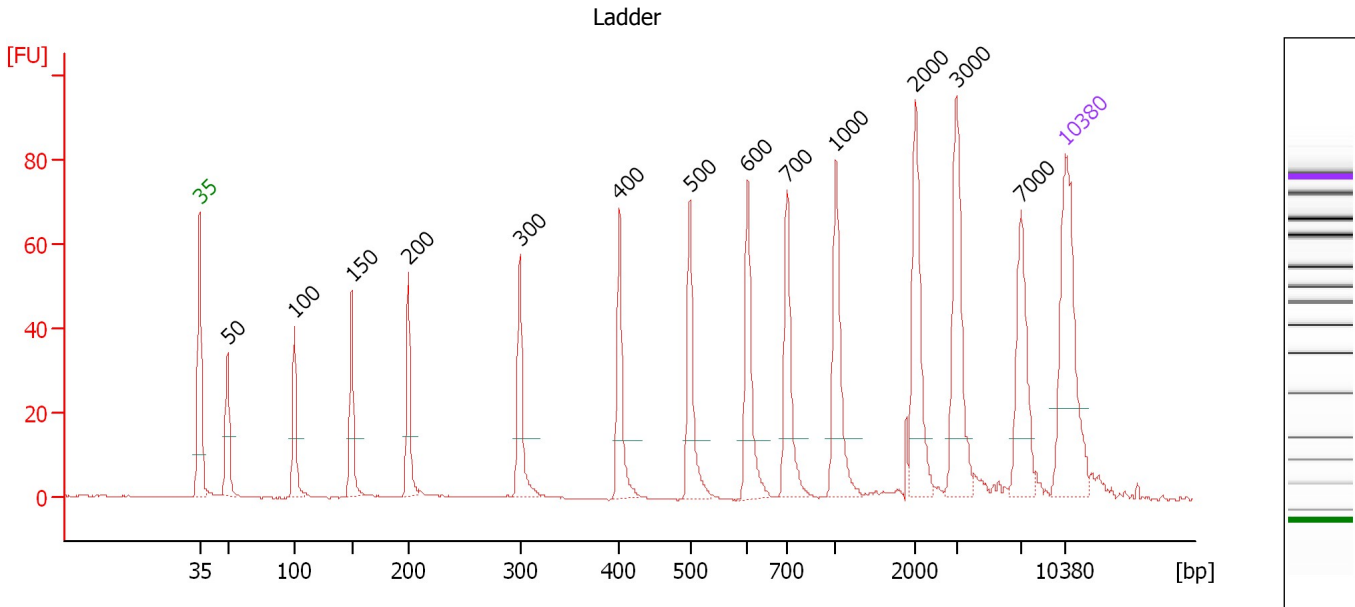


Assay Class: High Sensitivity DNA Assay  
 Data Path: C:\...ents and Settings\Bioanalyzer\2012-11-08\2012-11-08\_003.xad

Created: 11/8/2012 4:19:45 PM  
 Modified: 11/8/2012 5:01:56 PM

**Electropherogram Summary**



**Overall Results for Ladder**

Noise: 0.2

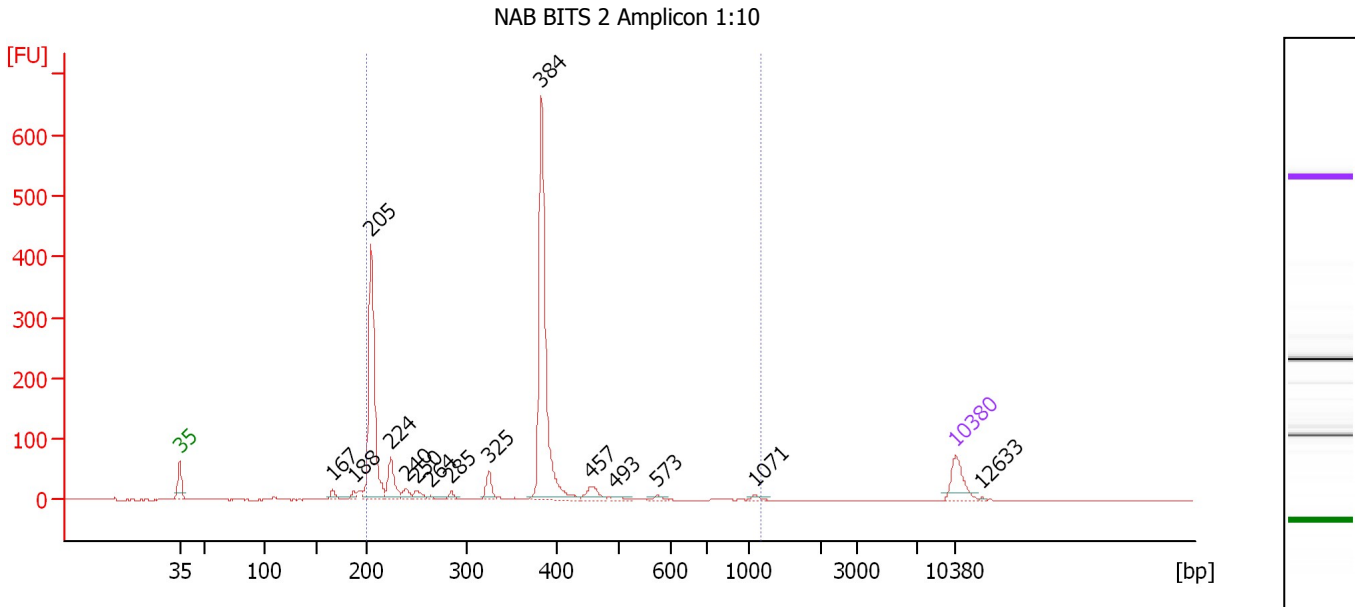
**Peak table for Ladder**

Peak	Size [bp]	Conc. [pg/μl]	Molarity [pmol/l]	Observations
1	35	125.00	5,411.3	Lower Marker
2	50	150.00	4,545.5	Ladder Peak
3	100	150.00	2,272.7	Ladder Peak
4	150	150.00	1,515.2	Ladder Peak
5	200	150.00	1,136.4	Ladder Peak
6	300	150.00	757.6	Ladder Peak
7	400	150.00	568.2	Ladder Peak
8	500	150.00	454.5	Ladder Peak
9	600	150.00	378.8	Ladder Peak
10	700	150.00	324.7	Ladder Peak
11	1,000	150.00	227.3	Ladder Peak
12	2,000	150.00	113.6	Ladder Peak
13	3,000	150.00	75.8	Ladder Peak
14	7,000	150.00	32.5	Ladder Peak
15	10,380	75.00	10.9	Upper Marker

Assay Class: High Sensitivity DNA Assay  
 Data Path: C:\...ents and Settings\Bioanalyzer\2012-11-08\2012-11-08\_003.xad

Created: 11/8/2012 4:19:45 PM  
 Modified: 11/8/2012 5:01:56 PM

**Electropherogram Summary Continued ...**



**Overall Results for sample 8 : NAB BITS 2 Amplicon 1:10**

Number of peaks found: 15                      Corr. Area 1: 1,375.7  
 Noise: 0.2

**Peak table for sample 8 : NAB BITS 2 Amplicon 1:10**

Peak	Size [bp]	Conc. [pg/μl]	Molarity [pmol/l]	Observations
1	35	125.00	5,411.3	Lower Marker
2	167	25.25	229.7	
3	188	19.73	159.4	
4	205	695.16	5,149.9	
5	224	118.25	798.9	
6	240	32.59	206.0	
7	250	31.18	188.7	
8	264	7.96	45.7	
9	285	17.70	94.1	
10	325	53.31	248.5	
11	384	794.79	3,134.6	
12	457	46.25	153.3	
13	493	12.35	37.9	
14	573	10.00	26.4	
15	1,071	8.96	12.7	
16	10,380	75.00	10.9	Upper Marker
17	12,633	0.00	0.0	

**Region table for sample 8 : NAB BITS 2 Amplicon 1:10**

From [bp]	To [bp]	Average Size [bp]	Molarity [pmol/l]	Conc. [pg/μl]	Corr. Area	% of Total	Size distribution in CV [%]	Color
200	1,167	334	10,121.1	1,879.00	1,375.7	93	36.1	Blue