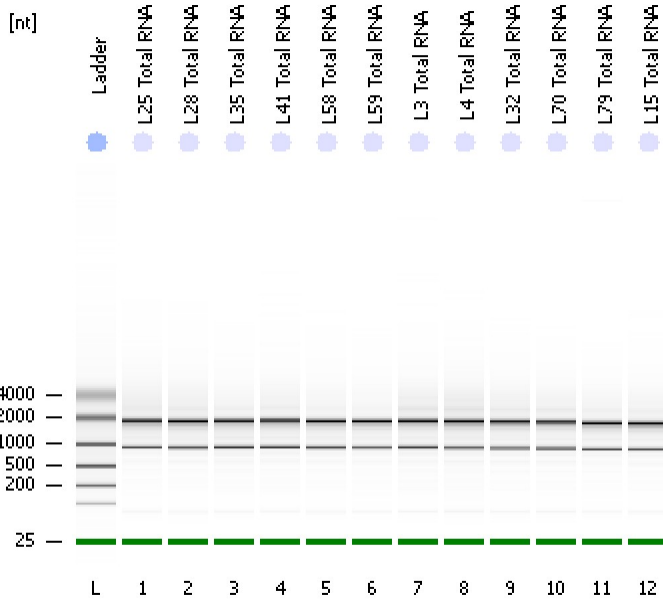


Assay Class: Eukaryote Total RNA Nano
Data Path: C:\...ents and Settings\Bioanalyzer\2012-11-09\2012-11-09_001.xad

Created: 11/9/2012 8:23:56 AM
Modified: 11/9/2012 8:48:40 AM

Electrophoresis File Run Summary



Instrument Information:

Instrument Name: DE13701086 Firmware: C.01.069
Serial#: DE13701086 Type: G2938B

Assay Information:

Assay Origin Path: C:\Program Files\Agilent\2100 bioanalyzer\2100 expert\assays\RNA\Eukaryote Total RNA Nano Series II.xsy

Assay Class: Eukaryote Total RNA Nano

Version: 2.6

Assay Comments: Total RNA Analysis ng sensitivity (Eukaryote)

© Copyright 2003 - 2009 Agilent Technologies, Inc.

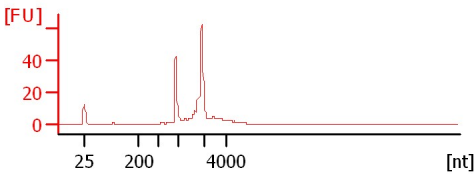
Chip Information:

Chip Lot #:

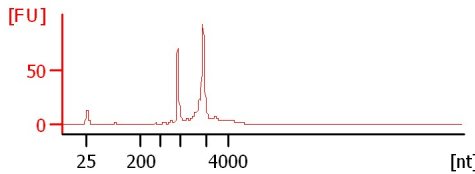
Reagent Kit Lot #:

Chip Comments:

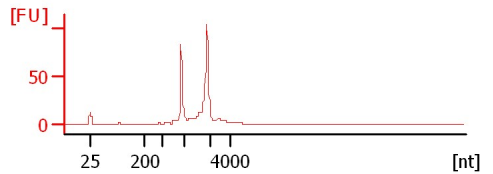
L25 Total RNA
RIN: 7.10



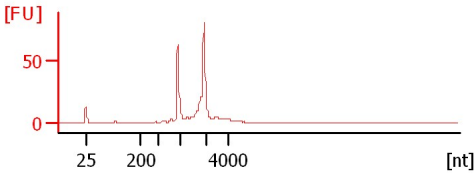
L28 Total RNA
RIN: 6.90



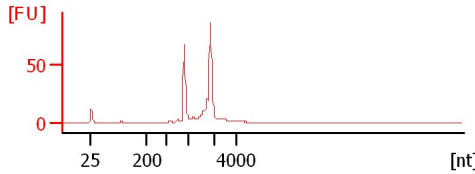
L35 Total RNA
RIN: 6.70



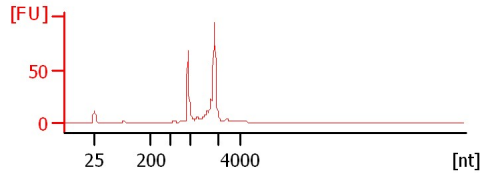
L41 Total RNA
RIN: 6.90



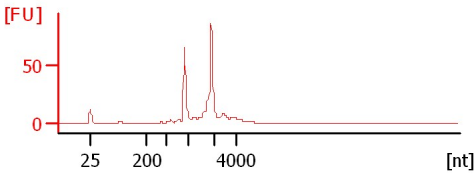
L58 Total RNA
RIN: 6.80



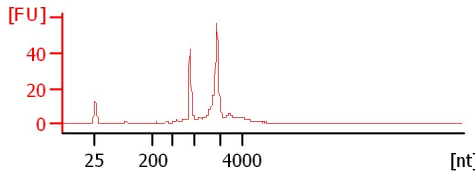
L59 Total RNA
RIN: 6.90



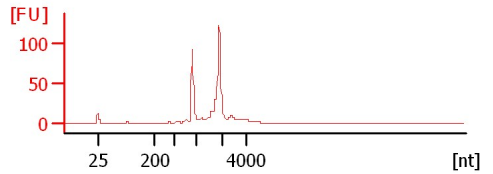
L3 Total RNA
RIN: 6.80



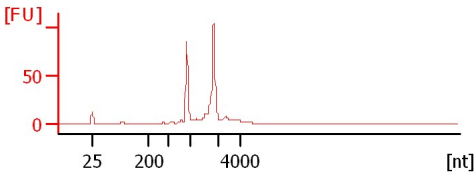
L4 Total RNA
RIN: 6.90



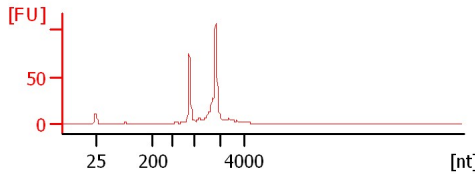
L32 Total RNA
RIN: 6.90



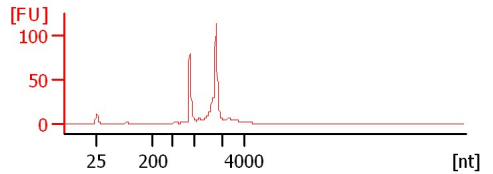
L70 Total RNA
RIN: 6.70



L79 Total RNA
RIN: 7



L15 Total RNA
RIN: 7



Assay Class: Eukaryote Total RNA Nano
Data Path: C:\...ents and Settings\Bioanalyzer\2012-11-09\2012-11-09_001.xad

Created: 11/9/2012 8:23:56 AM
Modified: 11/9/2012 8:48:40 AM

Electrophoresis File Run Summary (Chip Summary)

Sample Name	Sample Comment	Status	Result Label	Result Color
L25 Total RNA		✓	RIN: 7.10	
L28 Total RNA		✓	RIN: 6.90	
L35 Total RNA		✓	RIN: 6.70	
L41 Total RNA		✓	RIN: 6.90	
L58 Total RNA		✓	RIN: 6.80	
L59 Total RNA		✓	RIN: 6.90	
L3 Total RNA		✓	RIN: 6.80	
L4 Total RNA		✓	RIN: 6.90	
L32 Total RNA		✓	RIN: 6.90	
L70 Total RNA		✓	RIN: 6.70	
L79 Total RNA		✓	RIN:7	
L15 Total RNA		✓	RIN:7	
Ladder		✓	All Other Samples	

Chip Lot #

Reagent Kit Lot #

Chip Comments :

Assay Class: Eukaryote Total RNA Nano
Data Path: C:\...ents and Settings\Bioanalyzer\2012-11-09\2012-11-09_001.xad

Created: 11/9/2012 8:23:56 AM
Modified: 11/9/2012 8:48:40 AM

Electrophoresis Assay Details

General Analysis Settings

Number of Available Sample and Ladder Wells (Max.) : 13
Minimum Visible Range [s] : 17
Maximum Visible Range [s] : 70
Start Analysis Time Range [s] : 19
End Analysis Time Range [s] : 69
Ladder Concentration [ng/ μ l] : 150
Lower Marker Concentration [ng/ μ l] : 0
Upper Marker Concentration [ng/ μ l] : 0
Used Lower Marker for Quantitation
Standard Curve Fit is Logarithmic
Show Data Aligned to Lower Marker

Integrator Settings

Integration Start Time [s] : 19
Integration End Time [s] : 69
Slope Threshold : 0.6
Height Threshold [FU] : 0.5
Area Threshold : 0.2
Width Threshold [s] : 0.5
Baseline Plateau [s] : 6

Filter Settings

Filter Width [s] : 0.5
Polynomial Order : 4

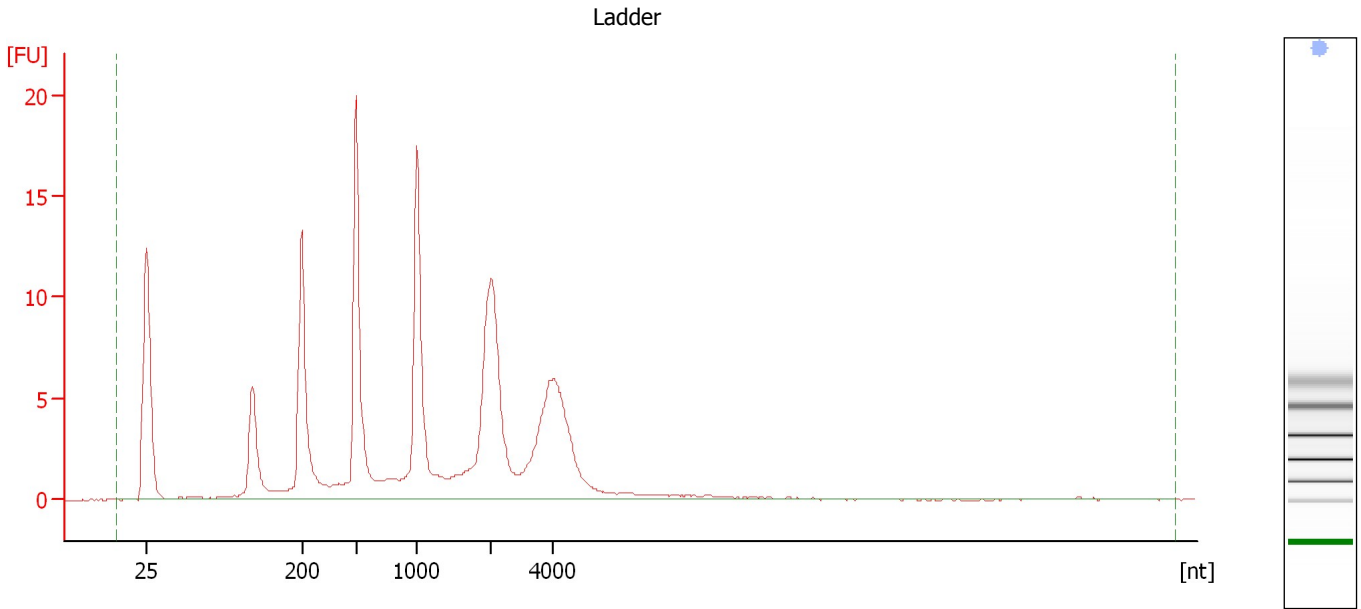
Ladder

Ladder Peak	Size
1	25
2	200
3	500
4	1000
5	2000
6	4000

Assay Class: Eukaryote Total RNA Nano
Data Path: C:\...ents and Settings\Bioanalyzer\2012-11-09\2012-11-09_001.xad

Created: 11/9/2012 8:23:56 AM
Modified: 11/9/2012 8:48:40 AM

Electropherogram Summary



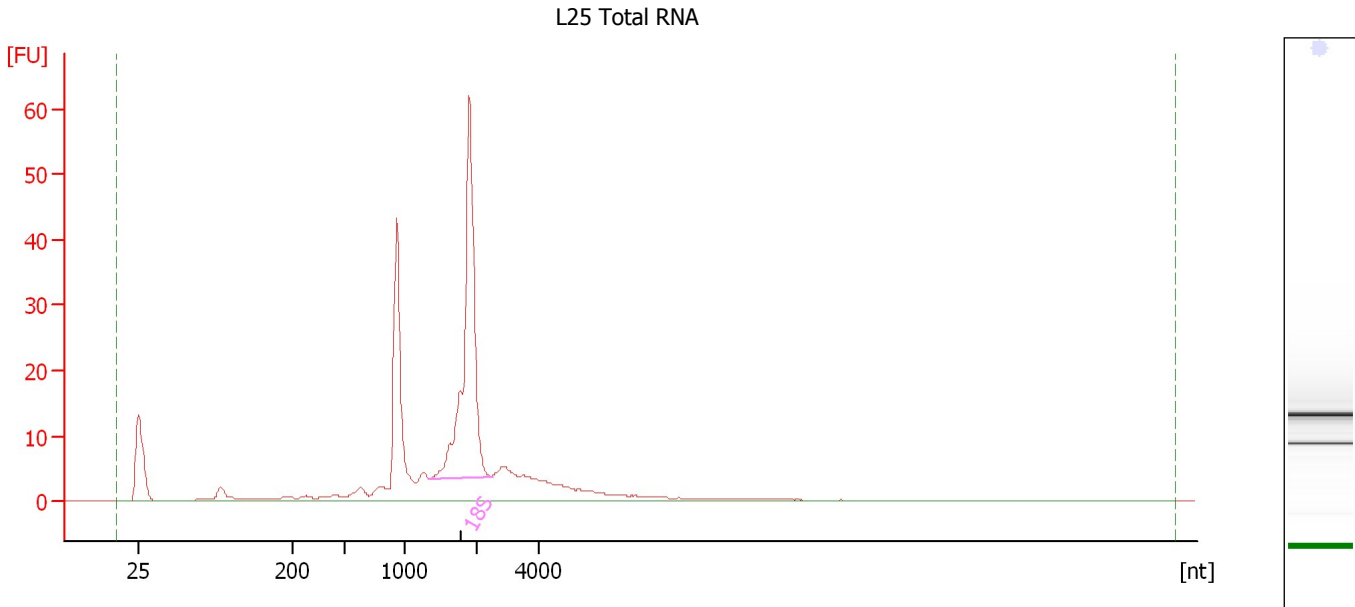
Overall Results for Ladder

RNA Area:	147.8	Result Flagging Color:	
RNA Concentration:	150 ng/μl	Result Flagging Label:	All Other Samples

Assay Class: Eukaryote Total RNA Nano
Data Path: C:\...ents and Settings\Bioanalyzer\2012-11-09\2012-11-09_001.xad

Created: 11/9/2012 8:23:56 AM
Modified: 11/9/2012 8:48:40 AM

Electropherogram Summary Continued ...



Overall Results for sample 1 : L25 Total RNA

RNA Area:	248.0	RNA Integrity Number (RIN):	7.1 (B.02.08, Anomaly Threshold(s) manually adapted)
RNA Concentration:	252 ng/μl		
rRNA Ratio [28s / 18s]:	0.0	Result Flagging Color:	
		Result Flagging Label:	RIN: 7.10

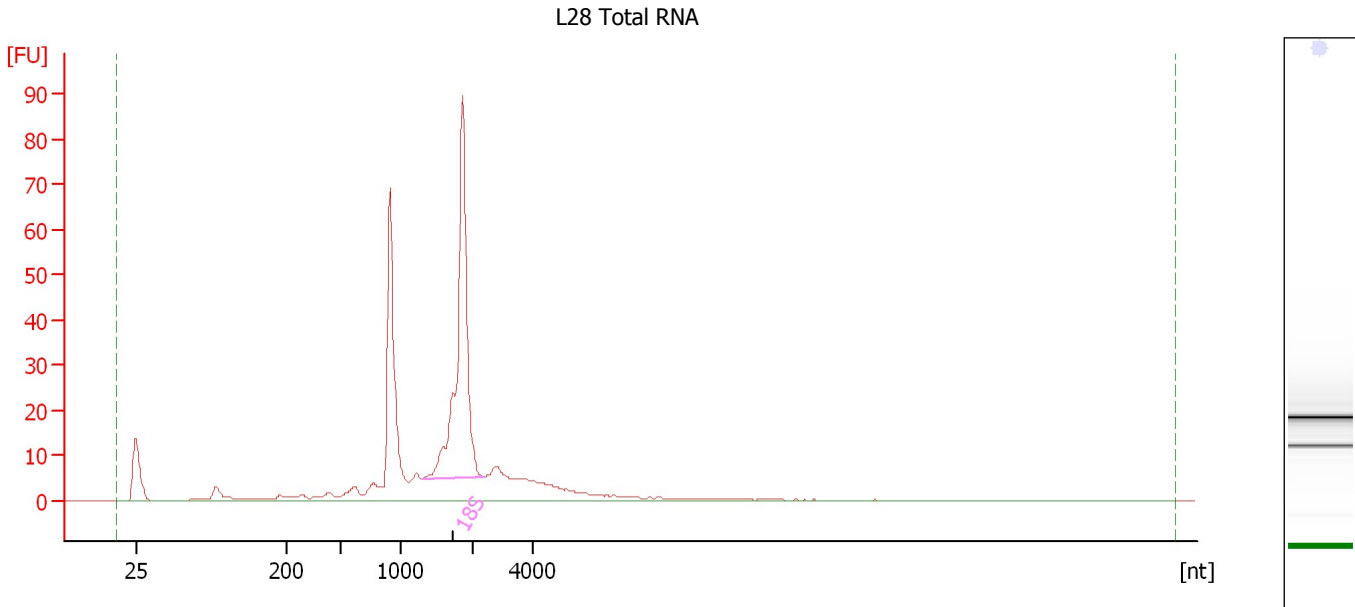
Fragment table for sample 1 : L25 Total RNA

Name	Start Size [nt]	End Size [nt]	Area	% of total Area
18S	1,327	2,469	88.7	35.8

Assay Class: Eukaryote Total RNA Nano
 Data Path: C:\...ents and Settings\Bioanalyzer\2012-11-09\2012-11-09_001.xad

Created: 11/9/2012 8:23:56 AM
 Modified: 11/9/2012 8:48:40 AM

Electropherogram Summary Continued ...



Overall Results for sample 2 : L28 Total RNA

RNA Area:	364.8	RNA Integrity Number (RIN):	6.9 (B.02.08, Anomaly Threshold(s) manually adapted)
RNA Concentration:	370 ng/μl	Result Flagging Color:	
rRNA Ratio [28s / 18s]:	0.0	Result Flagging Label:	RIN: 6.90

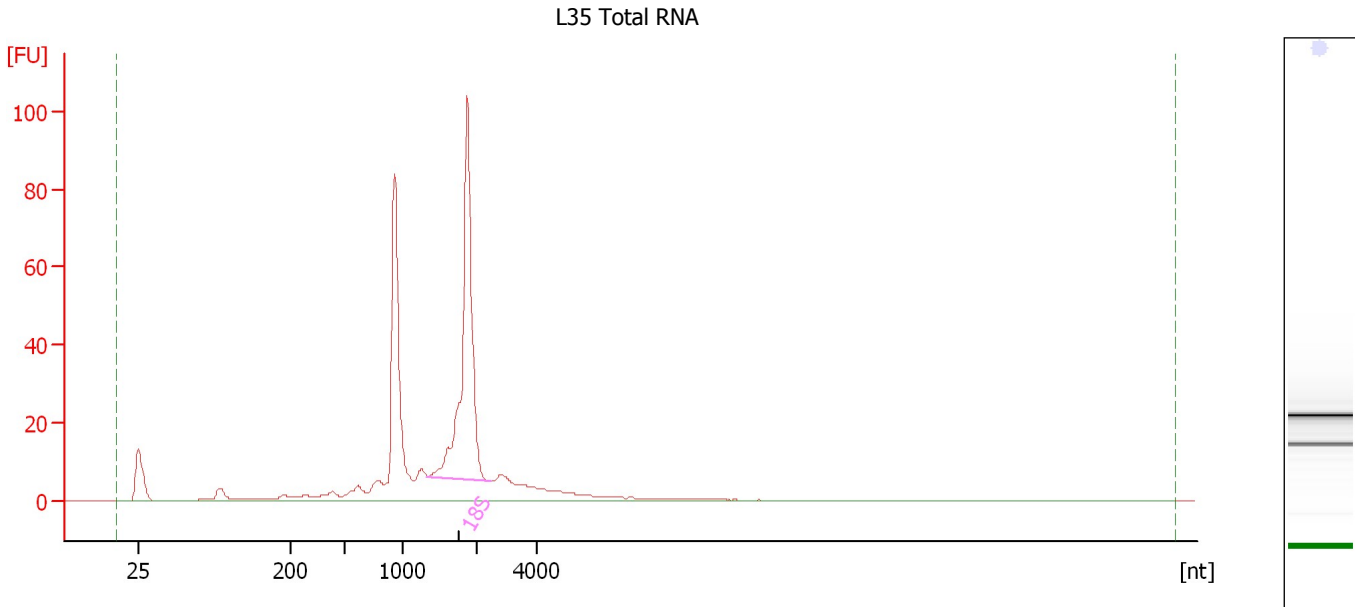
Fragment table for sample 2 : L28 Total RNA

Name	Start Size [nt]	End Size [nt]	Area	% of total Area
18S	1,312	2,413	126.4	34.7

Assay Class: Eukaryote Total RNA Nano
 Data Path: C:\...ents and Settings\Bioanalyzer\2012-11-09\2012-11-09_001.xad

Created: 11/9/2012 8:23:56 AM
 Modified: 11/9/2012 8:48:40 AM

Electropherogram Summary Continued ...



Overall Results for sample 3 : L35 Total RNA

RNA Area:	397.6	RNA Integrity Number (RIN):	6.7 (B.02.08, Anomaly Threshold(s) manually adapted)
RNA Concentration:	403 ng/μl	Result Flagging Color:	
rRNA Ratio [28s / 18s]:	0.0	Result Flagging Label:	RIN: 6.70

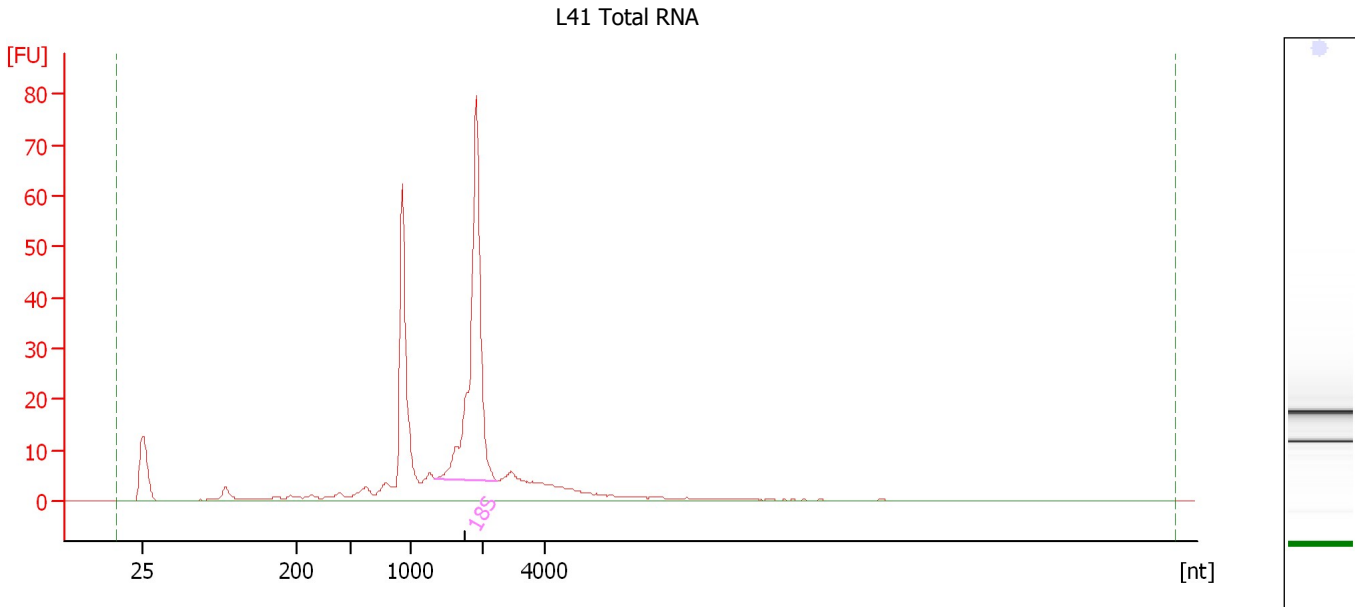
Fragment table for sample 3 : L35 Total RNA

Name	Start Size [nt]	End Size [nt]	Area	% of total Area
18S	1,322	2,497	141.1	35.5

Assay Class: Eukaryote Total RNA Nano
Data Path: C:\...ents and Settings\Bioanalyzer\2012-11-09\2012-11-09_001.xad

Created: 11/9/2012 8:23:56 AM
Modified: 11/9/2012 8:48:40 AM

Electropherogram Summary Continued ...



Overall Results for sample 4 : L41 Total RNA

RNA Area:	305.5	RNA Integrity Number (RIN):	6.9 (B.02.08, Anomaly Threshold(s) manually adapted)
RNA Concentration:	310 ng/μl		
rRNA Ratio [28s / 18s]:	0.0	Result Flagging Color:	
		Result Flagging Label:	RIN: 6.90

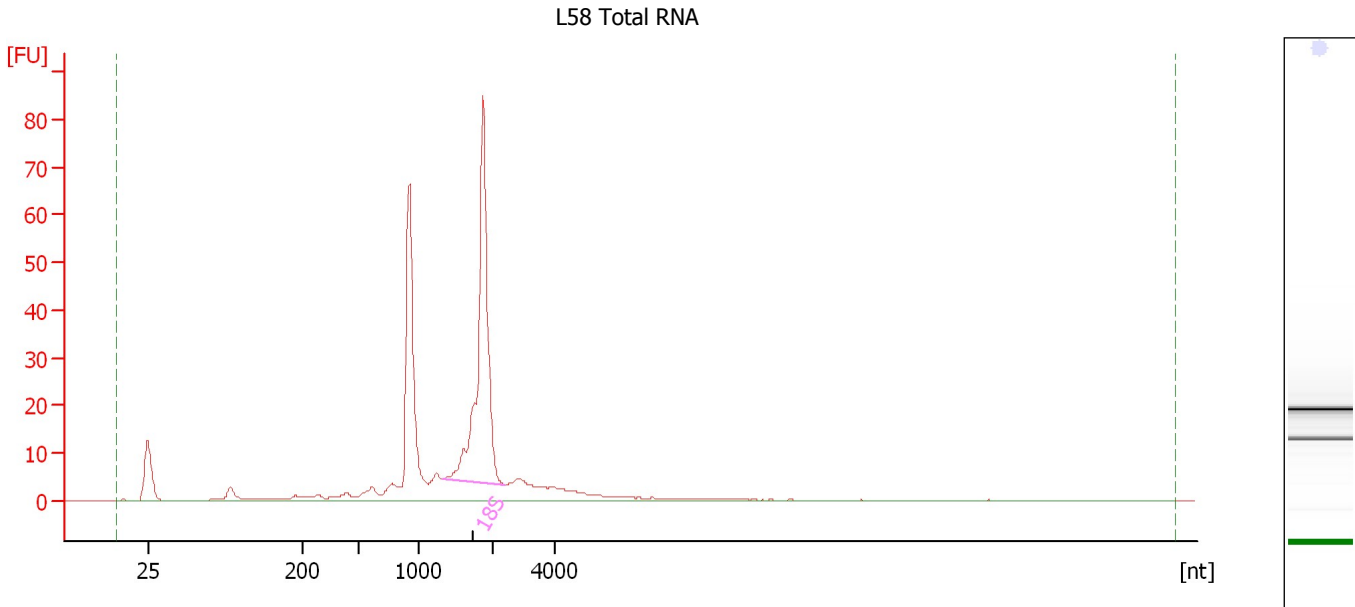
Fragment table for sample 4 : L41 Total RNA

Name	Start Size [nt]	End Size [nt]	Area	% of total Area
18S	1,342	2,455	113.3	37.1

Assay Class: Eukaryote Total RNA Nano
 Data Path: C:\...ents and Settings\Bioanalyzer\2012-11-09\2012-11-09_001.xad

Created: 11/9/2012 8:23:56 AM
 Modified: 11/9/2012 8:48:40 AM

Electropherogram Summary Continued ...



Overall Results for sample 5 : L58 Total RNA

RNA Area:	303.8	RNA Integrity Number (RIN):	6.8 (B.02.08, Anomaly Threshold(s) manually adapted)
RNA Concentration:	308 ng/μl	Result Flagging Color:	
rRNA Ratio [28s / 18s]:	0.0	Result Flagging Label:	RIN: 6.80

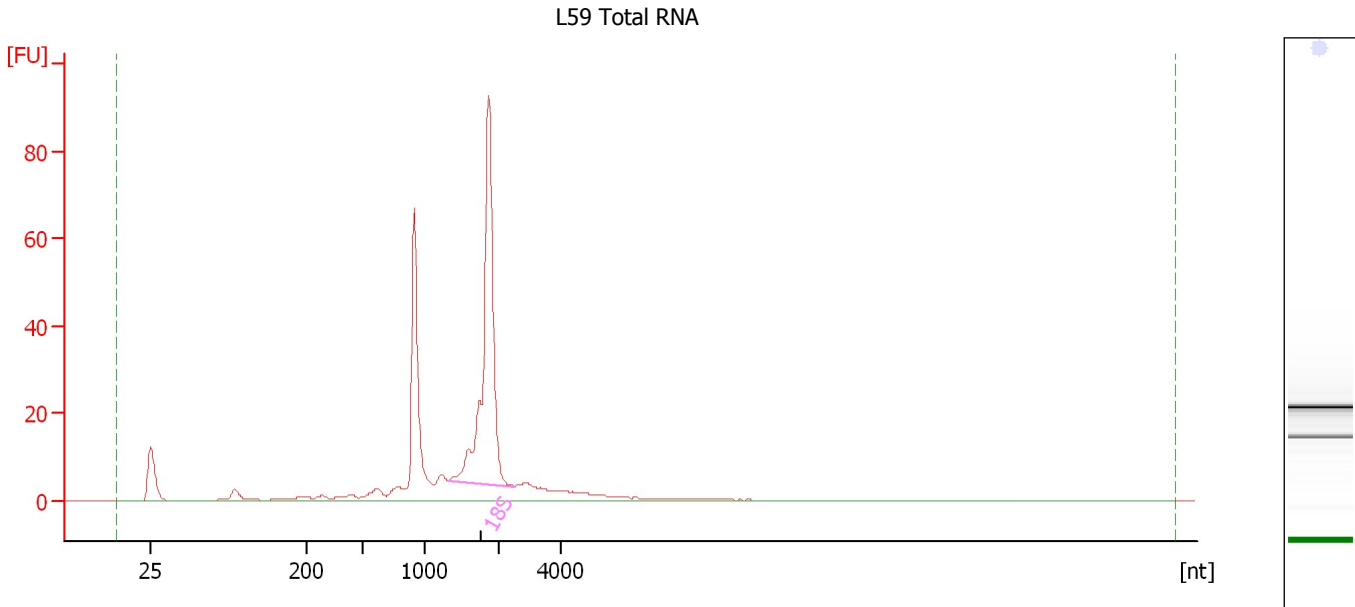
Fragment table for sample 5 : L58 Total RNA

Name	Start Size [nt]	End Size [nt]	Area	% of total Area
18S	1,323	2,386	115.4	38.0

Assay Class: Eukaryote Total RNA Nano
Data Path: C:\...ents and Settings\Bioanalyzer\2012-11-09\2012-11-09_001.xad

Created: 11/9/2012 8:23:56 AM
Modified: 11/9/2012 8:48:40 AM

Electropherogram Summary Continued ...



Overall Results for sample 6 : L59 Total RNA

RNA Area:	315.7	RNA Integrity Number (RIN):	6.9 (B.02.08, Anomaly Threshold(s) manually adapted)
RNA Concentration:	320 ng/μl		
rRNA Ratio [28s / 18s]:	0.0	Result Flagging Color:	
		Result Flagging Label:	RIN: 6.90

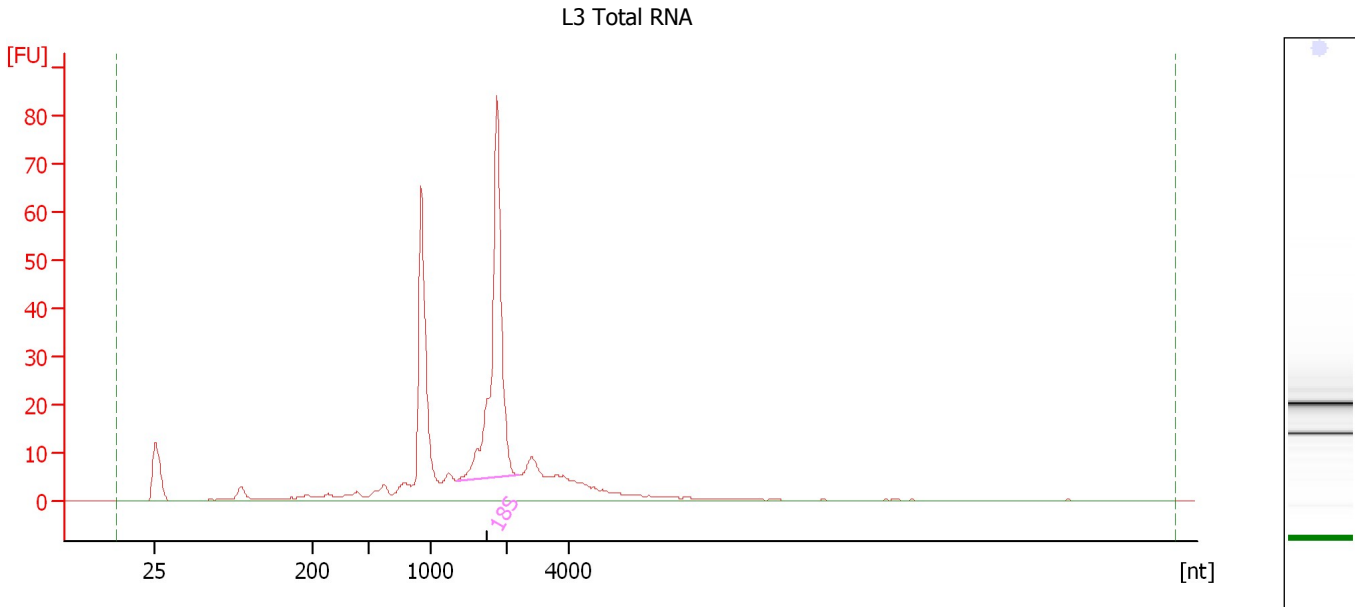
Fragment table for sample 6 : L59 Total RNA

Name	Start Size [nt]	End Size [nt]	Area	% of total Area
18S	1,324	2,509	124.2	39.3

Assay Class: Eukaryote Total RNA Nano
Data Path: C:\...ents and Settings\Bioanalyzer\2012-11-09\2012-11-09_001.xad

Created: 11/9/2012 8:23:56 AM
Modified: 11/9/2012 8:48:40 AM

Electropherogram Summary Continued ...



Overall Results for sample 7 : L3 Total RNA

RNA Area:	338.2	RNA Integrity Number (RIN):	6.8 (B.02.08, Anomaly Threshold(s) manually adapted)
RNA Concentration:	343 ng/μl	Result Flagging Color:	
rRNA Ratio [28s / 18s]:	0.0	Result Flagging Label:	RIN: 6.80

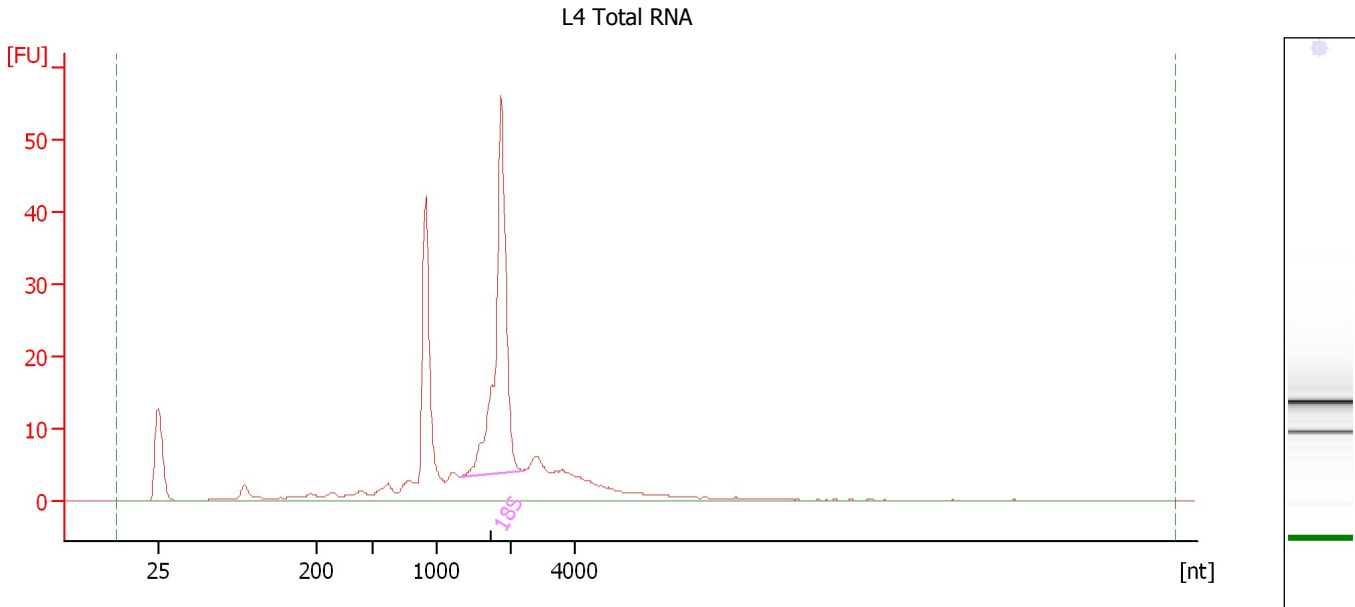
Fragment table for sample 7 : L3 Total RNA

Name	Start Size [nt]	End Size [nt]	Area	% of total Area
18S	1,343	2,400	113.1	33.5

Assay Class: Eukaryote Total RNA Nano
Data Path: C:\...ents and Settings\Bioanalyzer\2012-11-09\2012-11-09_001.xad

Created: 11/9/2012 8:23:56 AM
Modified: 11/9/2012 8:48:40 AM

Electropherogram Summary Continued ...



Overall Results for sample 8 : L4 Total RNA

RNA Area:	244.7	RNA Integrity Number (RIN):	6.9 (B.02.08, Anomaly Threshold(s) manually adapted)
RNA Concentration:	248 ng/μl		
rRNA Ratio [28s / 18s]:	0.0	Result Flagging Color:	
		Result Flagging Label:	RIN: 6.90

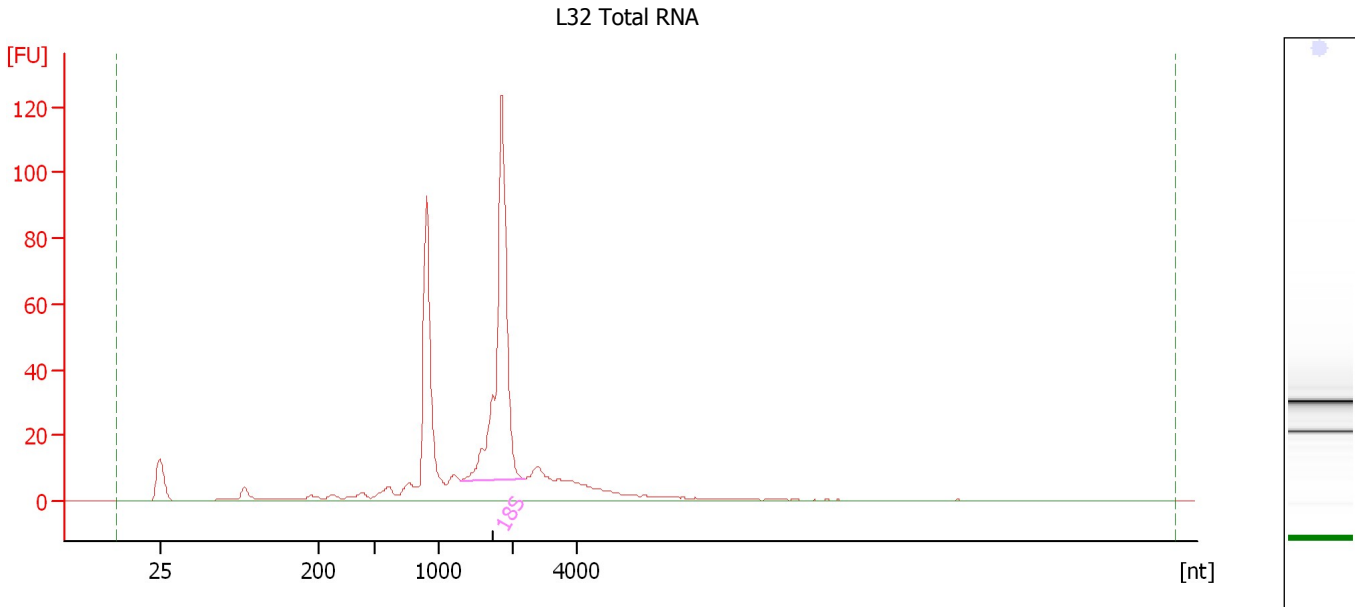
Fragment table for sample 8 : L4 Total RNA

Name	Start Size [nt]	End Size [nt]	Area	% of total Area
18S	1,315	2,320	78.2	31.9

Assay Class: Eukaryote Total RNA Nano
Data Path: C:\...ents and Settings\Bioanalyzer\2012-11-09\2012-11-09_001.xad

Created: 11/9/2012 8:23:56 AM
Modified: 11/9/2012 8:48:40 AM

Electropherogram Summary Continued ...



Overall Results for sample 9 : L32 Total RNA

RNA Area:	479.2	RNA Integrity Number (RIN):	6.9 (B.02.08, Anomaly Threshold(s) manually adapted)
RNA Concentration:	486 ng/μl		
rRNA Ratio [28s / 18s]:	0.0	Result Flagging Color:	
		Result Flagging Label:	RIN: 6.90

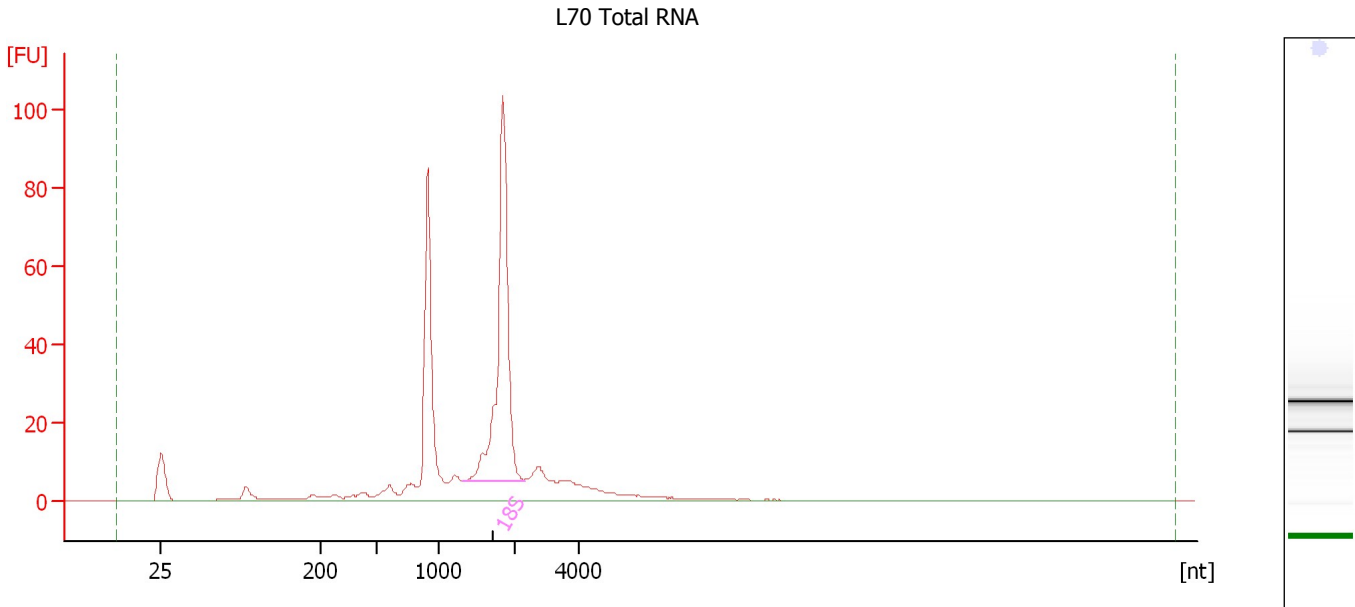
Fragment table for sample 9 : L32 Total RNA

Name	Start Size [nt]	End Size [nt]	Area	% of total Area
18S	1,306	2,360	168.8	35.2

Assay Class: Eukaryote Total RNA Nano
Data Path: C:\...ents and Settings\Bioanalyzer\2012-11-09\2012-11-09_001.xad

Created: 11/9/2012 8:23:56 AM
Modified: 11/9/2012 8:48:40 AM

Electropherogram Summary Continued ...



Overall Results for sample 10 : L70 Total RNA

RNA Area:	393.7	RNA Integrity Number (RIN):	6.7 (B.02.08, Anomaly Threshold(s) manually adapted)
RNA Concentration:	400 ng/μl		
rRNA Ratio [28s / 18s]:	0.0	Result Flagging Color:	
		Result Flagging Label:	RIN: 6.70

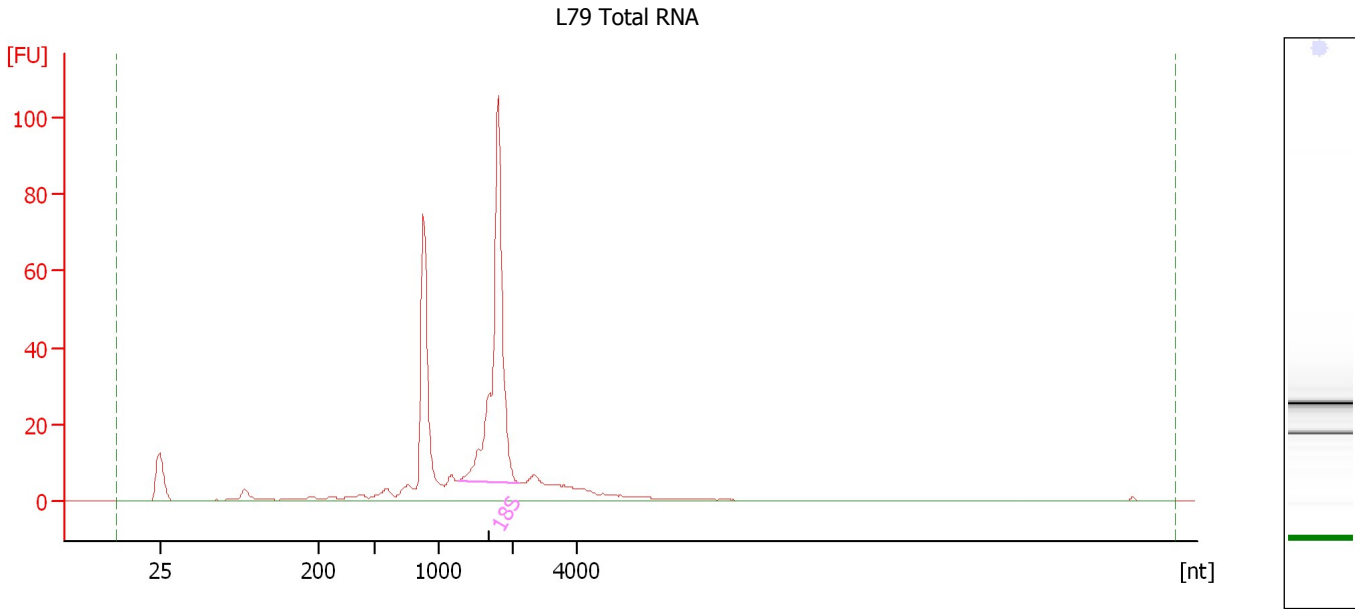
Fragment table for sample 10 : L70 Total RNA

Name	Start Size [nt]	End Size [nt]	Area	% of total Area
18S	1,311	2,267	137.4	34.9

Assay Class: Eukaryote Total RNA Nano
Data Path: C:\...ents and Settings\Bioanalyzer\2012-11-09\2012-11-09_001.xad

Created: 11/9/2012 8:23:56 AM
Modified: 11/9/2012 8:48:40 AM

Electropherogram Summary Continued ...



Overall Results for sample 11 : L79 Total RNA

RNA Area:	360.4	RNA Integrity Number (RIN):	7 (B.02.08, Anomaly Threshold(s) manually adapted)
RNA Concentration:	366 ng/μl	Result Flagging Color:	
rRNA Ratio [28s / 18s]:	0.0	Result Flagging Label:	RIN:7

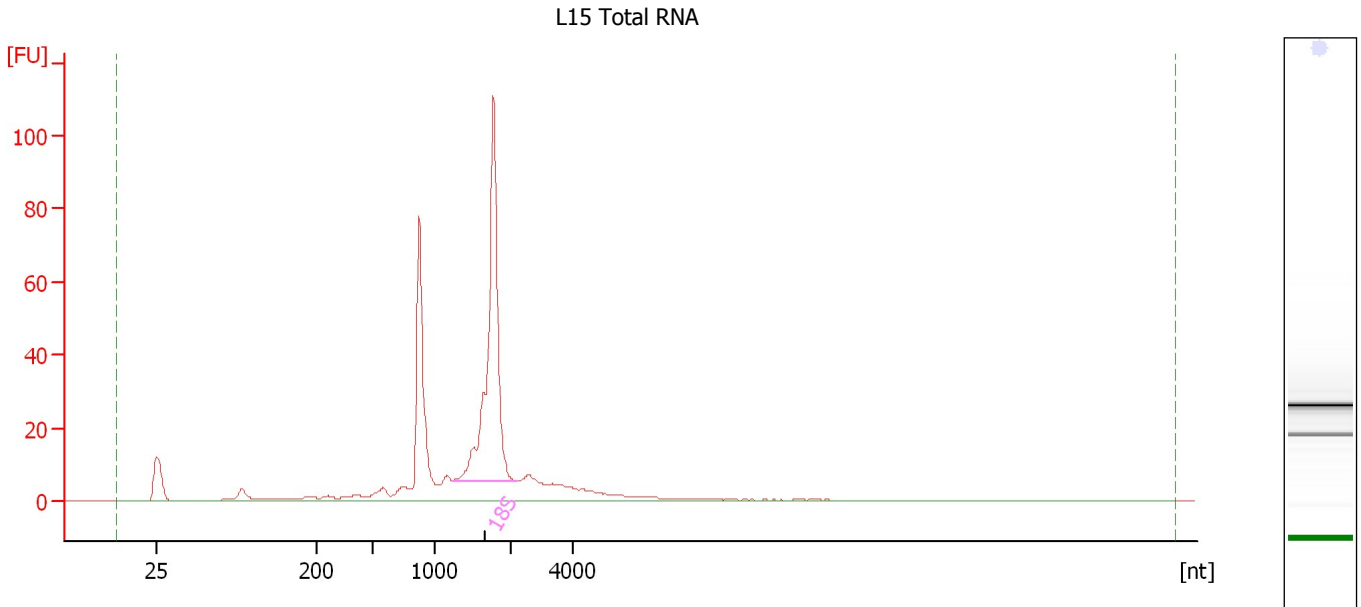
Fragment table for sample 11 : L79 Total RNA

Name	Start Size [nt]	End Size [nt]	Area	% of total Area
18S	1,263	2,159	144.2	40.0

Assay Class: Eukaryote Total RNA Nano
Data Path: C:\...ents and Settings\Bioanalyzer\2012-11-09\2012-11-09_001.xad

Created: 11/9/2012 8:23:56 AM
Modified: 11/9/2012 8:48:40 AM

Electropherogram Summary Continued ...



Overall Results for sample 12 : L15 Total RNA

RNA Area: 393.6 RNA Integrity Number (RIN): 7 (B.02.08, Anomaly Threshold(s) manually adapted)
RNA Concentration: 399 ng/μl
rRNA Ratio [28s / 18s]: 0.0
Result Flagging Color:
Result Flagging Label: RIN:7

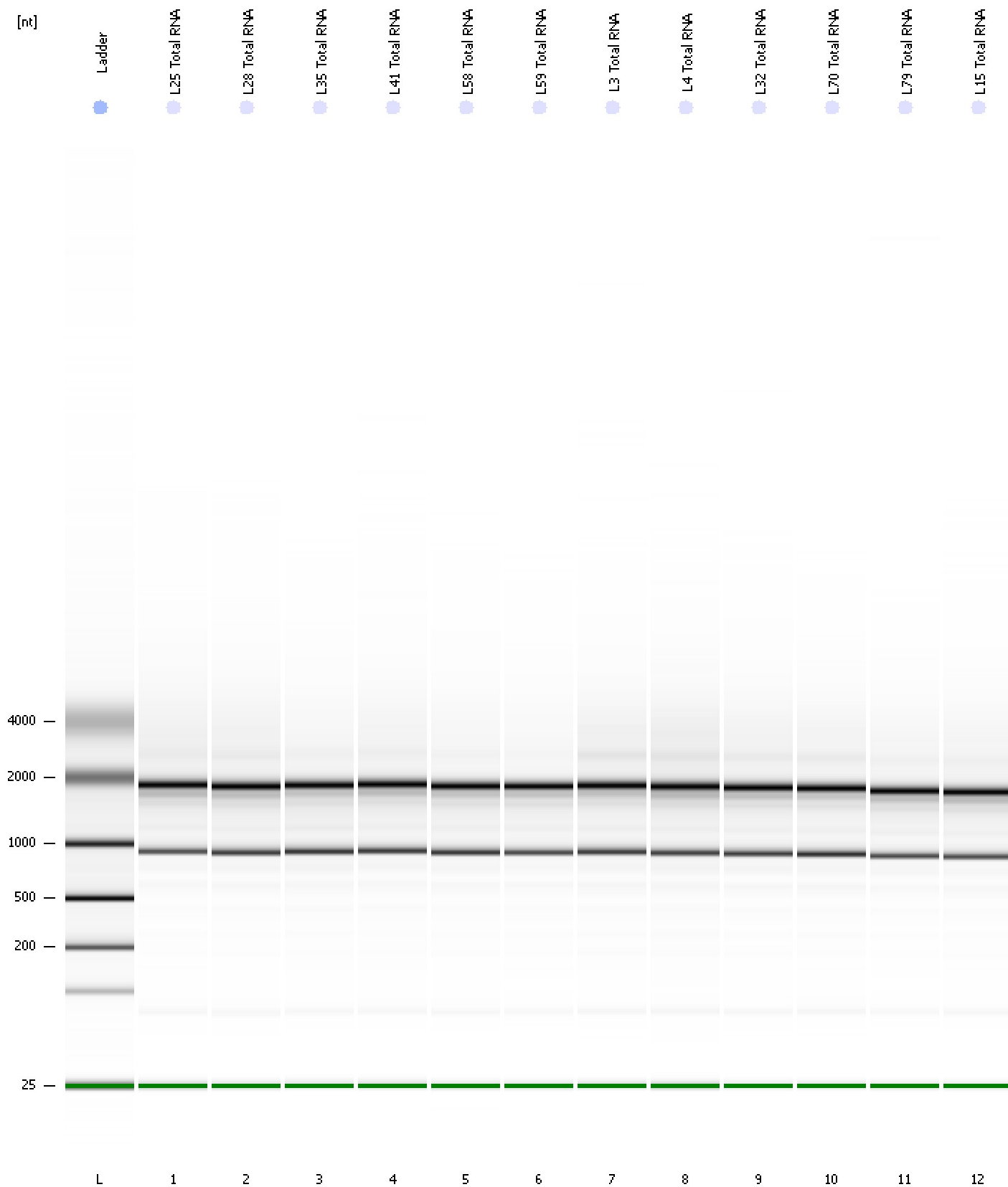
Fragment table for sample 12 : L15 Total RNA

Name	Start Size [nt]	End Size [nt]	Area	% of total Area
18S	1,254	2,212	153.5	39.0

Assay Class: Eukaryote Total RNA Nano
Data Path: C:\...ents and Settings\Bioanalyzer\2012-11-09\2012-11-09_001.xad

Created: 11/9/2012 8:23:56 AM
Modified: 11/9/2012 8:48:40 AM

Gel Image



Assay Class: Eukaryote Total RNA Nano Created: 11/9/2012 8:23:56 AM
 Data Path: C:\...ents and Settings\Bioanalyzer\2012-11-09\2012-11-09_001.xad Modified: 11/9/2012 8:48:40 AM

Run Logbook

Description	Number	Source	Category	Sub Category	Time	Time Zone	User	Host
Run ended on port 1 (Number of wells acquired: 13)		Instrument	Run		11/9/2012 8:47:47 AM	(GMT --08:00) Pacific Standard Time	UC Davis	D8XSMGH1
Run started on port 1 (File: C:\Documents and Settings\Bioanalyzer\2012-11-09\2012-11-09_001.xad)		Instrument	Run		11/9/2012 8:24:02 AM	(GMT --08:00) Pacific Standard Time	UC Davis	D8XSMGH1
Product Number : G2938B		Instrument	Run		11/9/2012 8:24:02 AM	(GMT --08:00) Pacific Standard Time	UC Davis	D8XSMGH1
Name :		Instrument	Run		11/9/2012 8:24:02 AM	(GMT --08:00) Pacific Standard Time	UC Davis	D8XSMGH1
Vendor : Agilent Technologies		Instrument	Run		11/9/2012 8:24:02 AM	(GMT --08:00) Pacific Standard Time	UC Davis	D8XSMGH1
Serial# : DE13701086		Instrument	Run		11/9/2012 8:24:02 AM	(GMT --08:00) Pacific Standard Time	UC Davis	D8XSMGH1
Firmware : C.01.069		Instrument	Run		11/9/2012 8:24:02 AM	(GMT --08:00) Pacific Standard Time	UC Davis	D8XSMGH1
Cartridge : Electrode		Instrument	Run		11/9/2012 8:24:02 AM	(GMT --08:00) Pacific Standard Time	UC Davis	D8XSMGH1