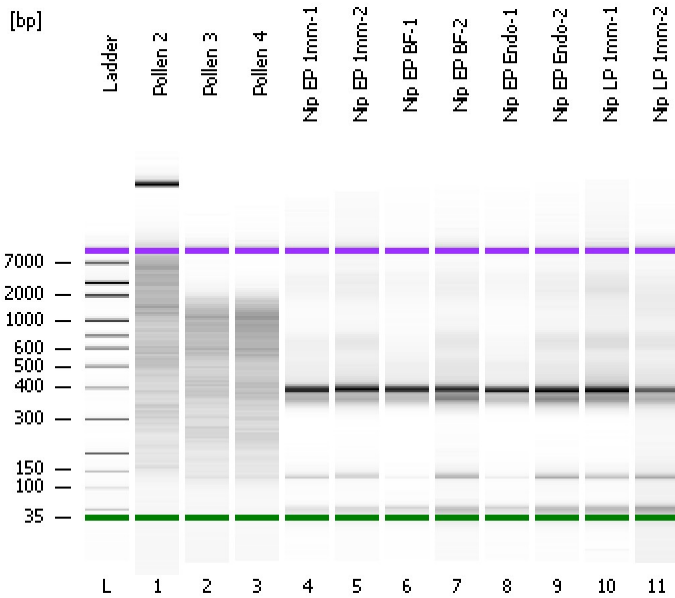


Assay Class: High Sensitivity DNA Assay
Data Path: C:\...ents and Settings\Bioanalyzer\2012-11-09\2012-11-09_002.xad

Created: 11/9/2012 9:01:05 AM
Modified: 11/9/2012 9:48:23 AM

Electrophoresis File Run Summary



Instrument Information:

Instrument Name: DE13701086 Firmware: C.01.069
Serial#: DE13701086 Type: G2938B

Assay Information:

Assay Origin Path: C:\Program Files\Agilent\2100 bioanalyzer\2100 expert\assays\dsDNA\High Sensitivity DNA.xsy
Assay Class: High Sensitivity DNA Assay
Version: 1.03
Assay Comments: Copyright © 2003-2010 Agilent Technologies

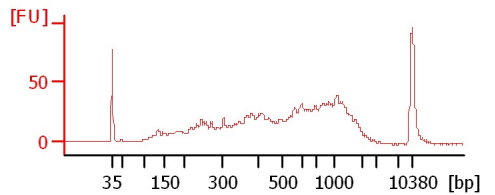
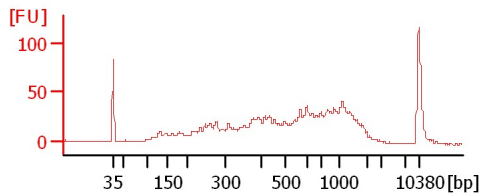
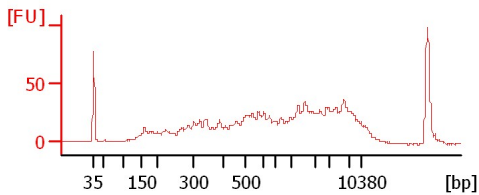
Chip Information:

Chip Lot #:
Reagent Kit Lot #:
Chip Comments:

Pollen 2

Pollen 3

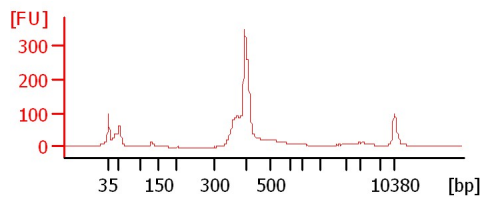
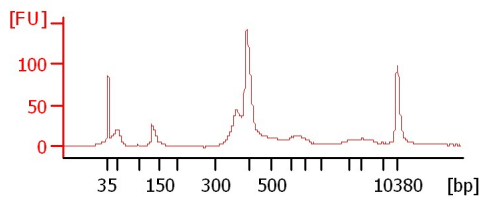
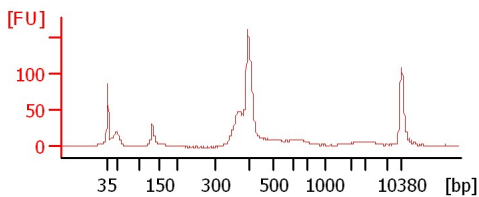
Pollen 4



Nip EP 1mm-1

Nip EP 1mm-2

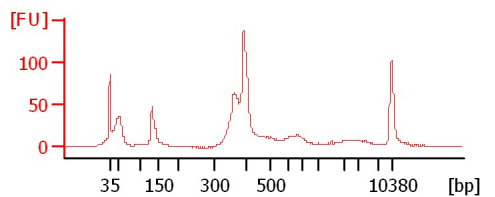
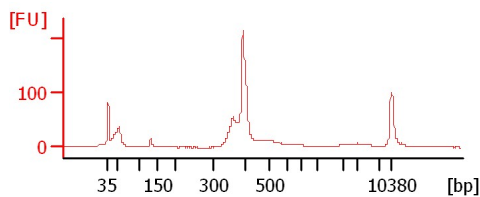
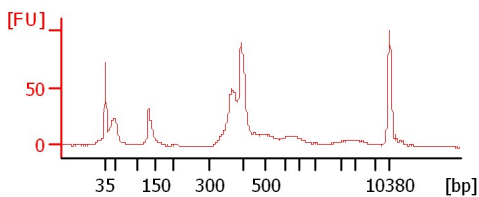
Nip EP BF-1



Nip EP BF-2

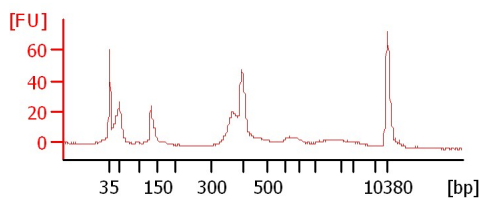
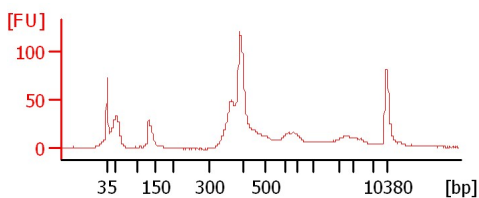
Nip EP Endo-1

Nip EP Endo-2



Nip LP 1mm-1

Nip LP 1mm-2



Assay Class: High Sensitivity DNA Assay
 Data Path: C:\...ents and Settings\Bioanalyzer\2012-11-09\2012-11-09_002.xad

Created: 11/9/2012 9:01:05 AM
 Modified: 11/9/2012 9:48:23 AM

Electrophoresis File Run Summary (Chip Summary)

Sample Name	Sample Comment	Rest. Digest	Status	Observation	Result Label	Result Color
Pollen 2		<input type="checkbox"/>	✓			
Pollen 3		<input type="checkbox"/>	✓			
Pollen 4		<input type="checkbox"/>	✓			
Nip EP 1mm-1		<input type="checkbox"/>	✓			
Nip EP 1mm-2		<input type="checkbox"/>	✓			
Nip EP BF-1		<input type="checkbox"/>	✓			
Nip EP BF-2		<input type="checkbox"/>	✓			
Nip EP Endo-1		<input type="checkbox"/>	✓			
Nip EP Endo-2		<input type="checkbox"/>	✓			
Nip LP 1mm-1		<input type="checkbox"/>	✓			
Nip LP 1mm-2		<input type="checkbox"/>	✓			
Ladder		<input type="checkbox"/>	✓			

Chip Lot #

Reagent Kit Lot #

Chip Comments :

Assay Class: High Sensitivity DNA Assay
Data Path: C:\...ents and Settings\Bioanalyzer\2012-11-09\2012-11-09_002.xad

Created: 11/9/2012 9:01:05 AM
Modified: 11/9/2012 9:48:23 AM

Electrophoresis Assay Details

General Analysis Settings

Number of Available Sample and Ladder Wells (Max.) : 12
Minimum Visible Range [s] : 32
Maximum Visible Range [s] : 138
Start Analysis Time Range [s] : 33
End Analysis Time Range [s] : 137.5
Ladder Concentration [pg/μl] : 1950
Uses Standard Area for Ladder Fragments
Lower Marker Concentration [pg/μl] : 125
Upper Marker Concentration [pg/μl] : 75
Used Upper Marker for Quantitation
Standard Curve Fit is Point to Point
Show Data Aligned to Lower and Upper Marker

Integrator Settings

Integration Start Time [s] : 33.05
Integration End Time [s] : 137
Slope Threshold : 0.8
Height Threshold [FU] : 5
Area Threshold : 0.1
Width Threshold [s] : 0.6
Baseline Plateau [s] : 0.5

Filter Settings

Filter Width [s] : 0.5
Polynomial Order : 4

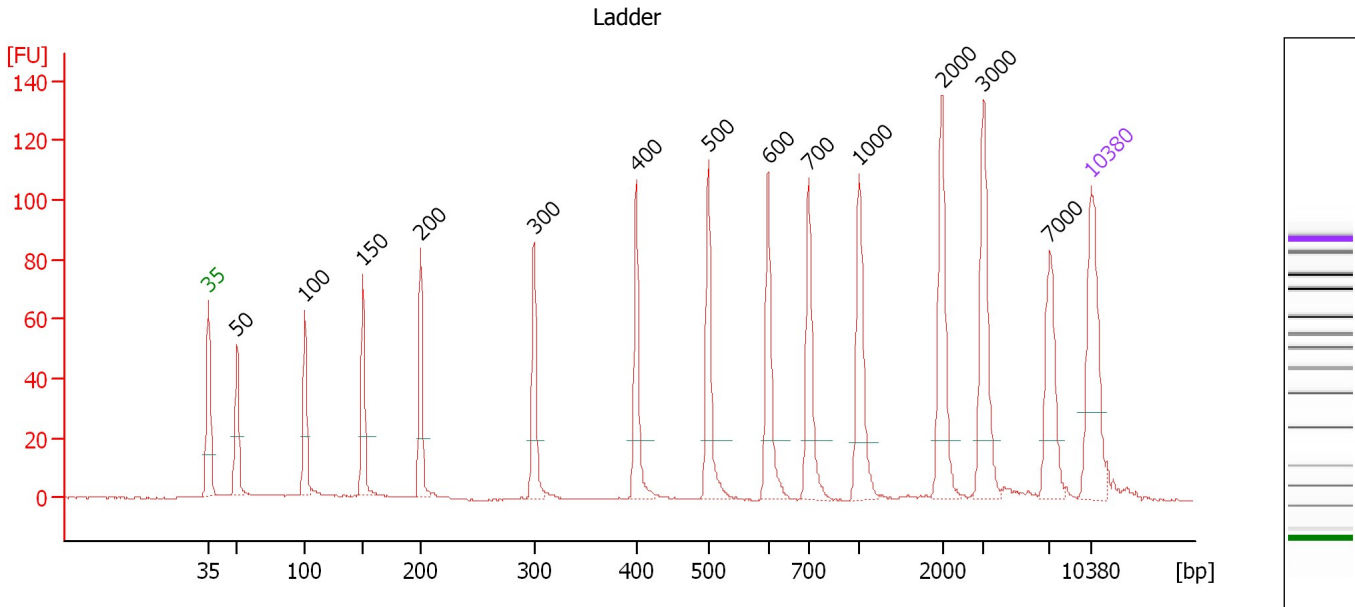
Ladder

Ladder Peak	Size	Area
1	35	160
2	50	210
3	100	208
4	150	221
5	200	242
6	300	270
7	400	305
8	500	306
9	600	336
10	700	321
11	1000	366
12	2000	413
13	3000	411
14	7000	400
15	10380	214

Assay Class: High Sensitivity DNA Assay
 Data Path: C:\...ents and Settings\Bioanalyzer\2012-11-09\2012-11-09_002.xad

Created: 11/9/2012 9:01:05 AM
 Modified: 11/9/2012 9:48:23 AM

Electropherogram Summary



Overall Results for Ladder

Noise: 0.2

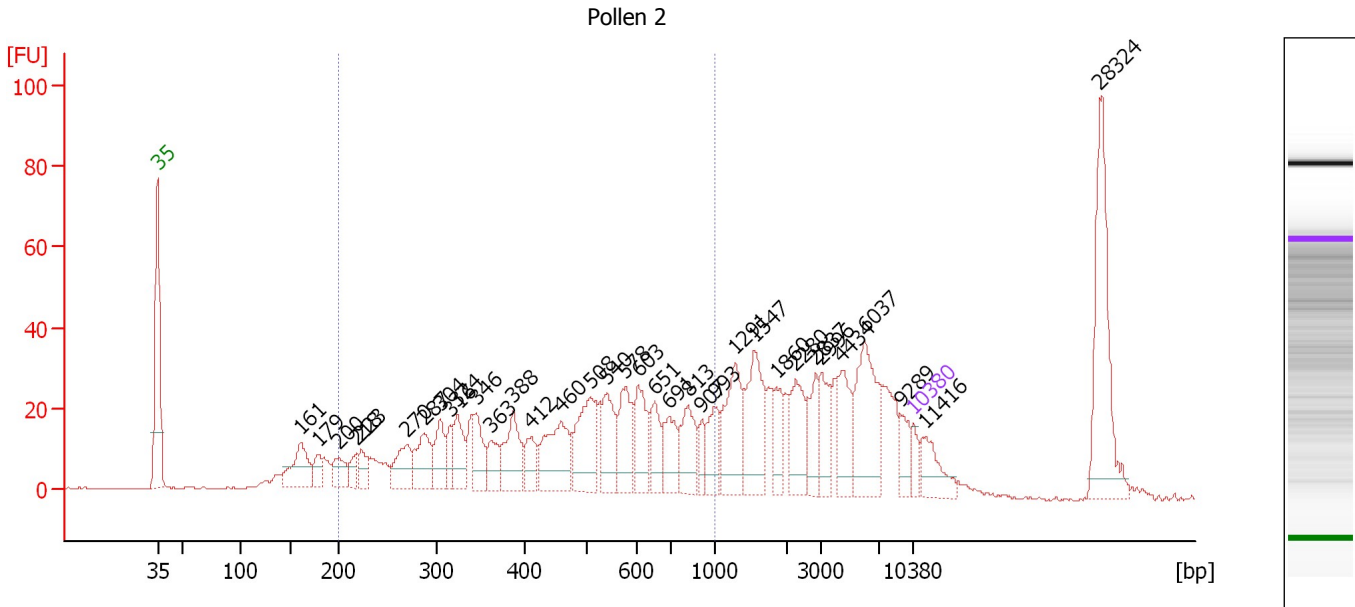
Peak table for Ladder

Peak	Size [bp]	Conc. [pg/μl]	Molarity [pmol/l]	Observations
1	35	125.00	5,411.3	Lower Marker
2	50	150.00	4,545.5	Ladder Peak
3	100	150.00	2,272.7	Ladder Peak
4	150	150.00	1,515.2	Ladder Peak
5	200	150.00	1,136.4	Ladder Peak
6	300	150.00	757.6	Ladder Peak
7	400	150.00	568.2	Ladder Peak
8	500	150.00	454.5	Ladder Peak
9	600	150.00	378.8	Ladder Peak
10	700	150.00	324.7	Ladder Peak
11	1,000	150.00	227.3	Ladder Peak
12	2,000	150.00	113.6	Ladder Peak
13	3,000	150.00	75.8	Ladder Peak
14	7,000	150.00	32.5	Ladder Peak
15	10,380	75.00	10.9	Upper Marker

Assay Class: High Sensitivity DNA Assay
 Data Path: C:\...ents and Settings\Bioanalyzer\2012-11-09\2012-11-09_002.xad

Created: 11/9/2012 9:01:05 AM
 Modified: 11/9/2012 9:48:23 AM

Electropherogram Summary Continued ...



Overall Results for sample 1 : Pollen 2

Number of peaks found: 35 Corr. Area 1: 649.2
 Noise: 0.2

Peak table for sample 1 : Pollen 2

Peak	Size [bp]	Conc. [pg/µl]	Molarity [pmol/l]	Observations
1	35	125.00	5,411.3	Lower Marker
2	161	392.25	3,698.3	
3	179	130.01	1,103.4	
4	200	182.30	1,382.3	
5	218	111.05	772.2	
6	223	127.63	868.8	
7	270	276.46	1,552.5	
8	287	323.07	1,707.2	
9	304	243.13	1,211.5	
10	316	146.16	701.3	
11	324	254.67	1,192.5	
12	346	242.96	1,064.9	
13	363	170.98	714.4	
14	388	364.16	1,422.1	
15	412	174.44	641.0	
16	460	468.53	1,543.7	
17	508	514.98	1,536.4	
18	540	348.66	978.3	
19	578	337.35	884.7	
20	603	302.18	759.1	
21	651	211.43	492.4	
22	691	240.54	527.1	
23	813	300.87	560.8	
24	907	100.84	168.5	
25	993	211.70	322.9	
26	1,291	423.21	496.7	

Assay Class: High Sensitivity DNA Assay
 Data Path: C:\...ents and Settings\Bioanalyzer\2012-11-09\2012-11-09_002.xad


Created: 11/9/2012 9:01:05 AM
 Modified: 11/9/2012 9:48:23 AM

Electropherogram Summary Continued ...

... Peak table for sample 1 : Pollen 2

Peak	Size [bp]	Conc. [pg/μl]	Molarity [pmol/l]	Observations
27	1,547	449.59	440.2	
28	1,860	169.97	138.5	
29	2,280	276.19	183.6	
30	2,837	194.85	104.1	
31	2,996	207.27	104.8	
32	4,434	265.24	90.6	
33	6,037	538.67	135.2	
34	9,289	122.07	19.9	
35	10,380	75.00	10.9	Upper Marker
36	11,416	0.00	0.0	
37	28,324	0.00	0.0	

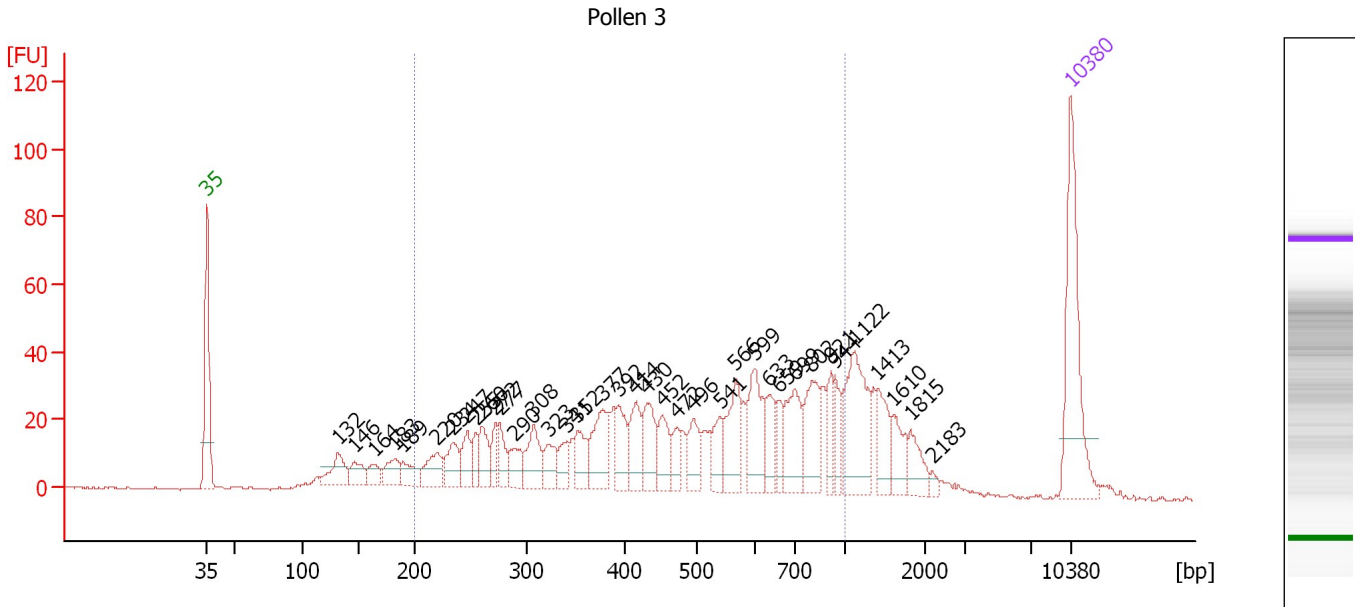
Region table for sample 1 : Pollen 2

From [bp]	To [bp]	Average Size [bp]	Molarity [pmol/l]	Conc. [pg/μl]	Corr. Area	% of Total	Size distribution in CV [%]	Color
200	1,000	496	24,441.3	6,416.03	649.2	49	38.6	

Assay Class: High Sensitivity DNA Assay
 Data Path: C:\...ents and Settings\Bioanalyzer\2012-11-09\2012-11-09_002.xad

Created: 11/9/2012 9:01:05 AM
 Modified: 11/9/2012 9:48:23 AM

Electropherogram Summary Continued ...



Overall Results for sample 2 : Pollen 3

Number of peaks found: 38 Corr. Area 1: 956.5
 Noise: 0.3

Peak table for sample 2 : Pollen 3

Peak	Size [bp]	Conc. [pg/μl]	Molarity [pmol/l]	Observations
1	35	125.00	5,411.3	Lower Marker
2	132	29.99	344.6	
3	146	18.53	191.8	
4	164	13.57	125.5	
5	183	20.99	174.0	
6	189	19.42	155.3	
7	220	27.91	192.2	
8	234	25.93	167.6	
9	247	22.30	136.6	
10	255	14.63	86.9	
11	260	25.07	145.9	
12	272	15.16	84.4	
13	277	20.06	109.9	
14	290	19.80	103.4	
15	308	34.00	167.5	
16	323	19.91	93.3	
17	341	15.83	70.3	
18	352	24.87	107.2	
19	377	41.75	167.7	
20	392	27.79	107.3	
21	414	32.54	119.1	
22	430	32.50	114.4	
23	452	26.01	87.2	
24	472	15.07	48.4	
25	496	24.20	74.0	
26	541	19.66	55.1	

Assay Class: High Sensitivity DNA Assay
 Data Path: C:\...ents and Settings\Bioanalyzer\2012-11-09\2012-11-09_002.xad

Created: 11/9/2012 9:01:05 AM
 Modified: 11/9/2012 9:48:23 AM

Electropherogram Summary Continued ...

... Peak table for sample 2 : Pollen 3

Peak	Size [bp]	Conc. [pg/μl]	Molarity [pmol/l]	Observations
27	566	39.80	106.5	
28	599	45.29	114.6	
29	633	22.24	53.2	
30	659	14.62	33.6	
31	699	41.09	89.0	
32	802	41.33	78.1	
33	921	17.27	28.4	
34	944	15.11	24.3	
35	1,122	64.60	87.2	
36	1,413	24.32	26.1	
37	1,610	19.79	18.6	
38	1,815	16.63	13.9	
39	2,183	3.15	2.2	
40	▶ 10,380	75.00	10.9	Upper Marker

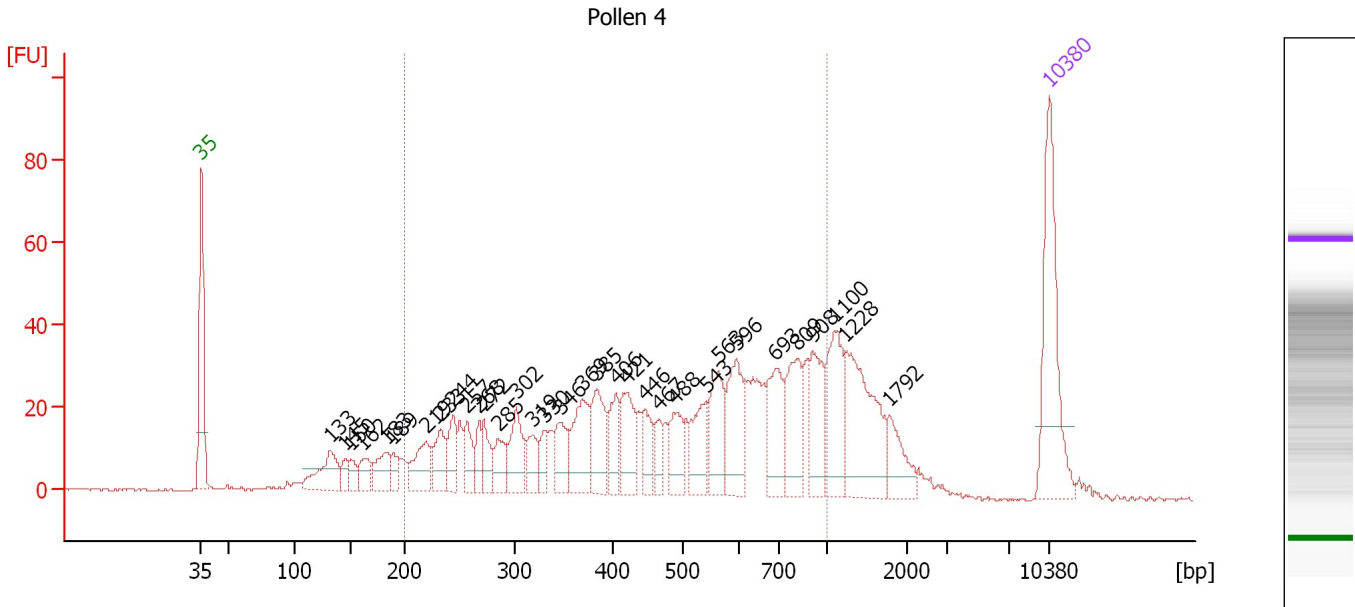
Region table for sample 2 : Pollen 3

From [bp]	To [bp]	Average Size [bp]	Molarity [pmol/l]	Conc. [pg/μl]	Corr. Area	% of Total	Size distribution in CV [%]	Color
200	1,000	510	3,263.4	861.05	956.5	74	39.8	■

Assay Class: High Sensitivity DNA Assay
 Data Path: C:\...ents and Settings\Bioanalyzer\2012-11-09\2012-11-09_002.xad

Created: 11/9/2012 9:01:05 AM
 Modified: 11/9/2012 9:48:23 AM

Electropherogram Summary Continued ...



Overall Results for sample 3 : Pollen 4

Number of peaks found: 33 Corr. Area 1: 940.6
 Noise: 0.4

Peak table for sample 3 : Pollen 4

Peak	Size [bp]	Conc. [pg/μl]	Molarity [pmol/l]	Observations
1	35	125.00	5,411.3	Lower Marker
2	133	46.09	527.0	
3	145	11.24	117.1	
4	150	12.33	124.4	
5	162	19.90	185.8	
6	183	26.83	221.6	
7	189	13.51	108.2	
8	219	35.27	244.2	
9	233	29.35	191.2	
10	244	25.68	159.2	
11	257	23.37	138.0	
12	268	16.09	91.1	
13	272	22.34	124.4	
14	285	21.11	112.3	
15	302	38.82	194.7	
16	319	21.32	101.2	
17	330	12.53	57.5	
18	346	29.57	129.4	
19	369	48.00	197.0	
20	385	43.29	170.3	
21	406	26.75	99.9	
22	421	39.04	140.5	
23	446	22.34	75.8	
24	467	13.54	43.9	
25	488	29.37	91.1	
26	543	35.20	98.3	

Assay Class: High Sensitivity DNA Assay
 Data Path: C:\...ents and Settings\Bioanalyzer\2012-11-09\2012-11-09_002.xad


Created: 11/9/2012 9:01:05 AM
 Modified: 11/9/2012 9:48:23 AM

Electropherogram Summary Continued ...

... Peak table for sample 3 : Pollen 4

Peak	Size [bp]	Conc. [pg/μl]	Molarity [pmol/l]	Observations
27	563	43.01	115.7	
28	596	49.04	124.8	
29	693	45.86	100.2	
30	809	46.30	86.7	
31	908	40.71	67.9	
32	1,100	50.31	69.3	
33	1,228	80.76	99.6	
34	1,792	23.61	20.0	
35	▶ 10,380	75.00	10.9	Upper Marker

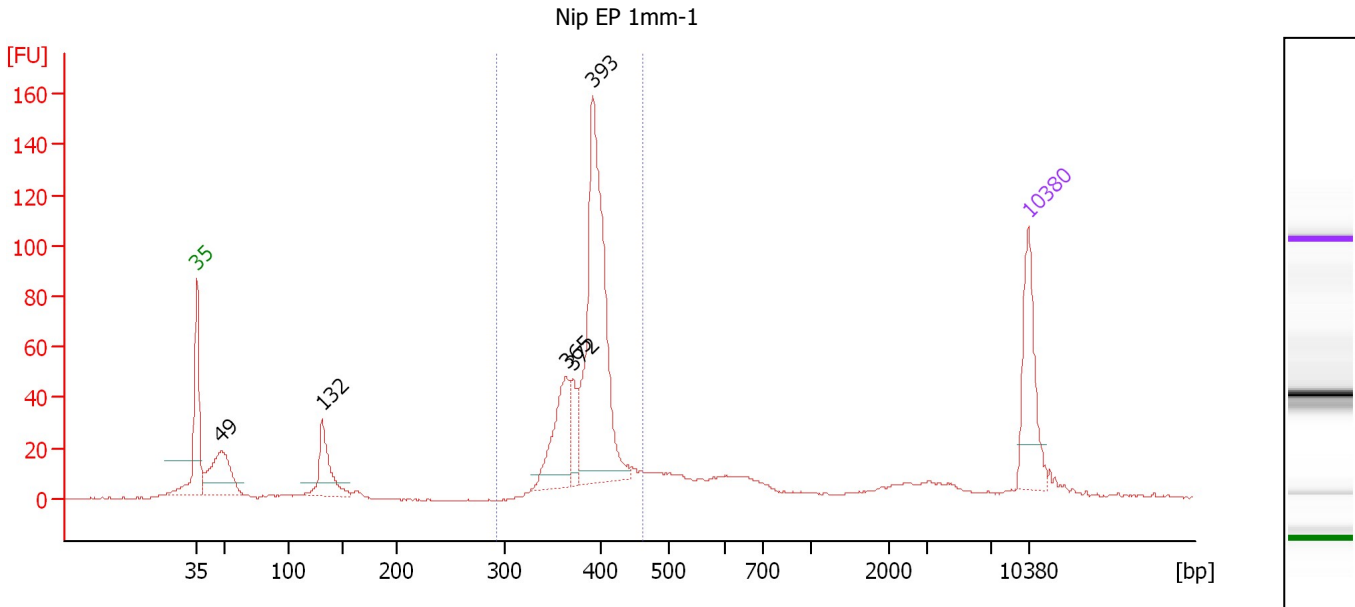
Region table for sample 3 : Pollen 4

From [bp]	To [bp]	Average Size [bp]	Molarity [pmol/l]	Conc. [pg/μl]	Corr. Area	% of Total	Size distribution in CV [%]	Color
200	1,000	512	3,475.9	914.20	940.6	74	40.2	

Assay Class: High Sensitivity DNA Assay
 Data Path: C:\...ents and Settings\Bioanalyzer\2012-11-09\2012-11-09_002.xad

Created: 11/9/2012 9:01:05 AM
 Modified: 11/9/2012 9:48:23 AM

Electropherogram Summary Continued ...



Overall Results for sample 4 : Nip EP 1mm-1

Number of peaks found: 5 Corr. Area 1: 564.5
 Noise: 0.3

Peak table for sample 4 : Nip EP 1mm-1

Peak	Size [bp]	Conc. [pg/μl]	Molarity [pmol/l]	Observations
1	35	125.00	5,411.3	Lower Marker
2	49	120.90	3,773.3	
3	132	86.70	997.1	
4	365	101.20	420.4	
5	372	35.94	146.4	
6	393	347.85	1,342.7	
7	10,380	75.00	10.9	Upper Marker

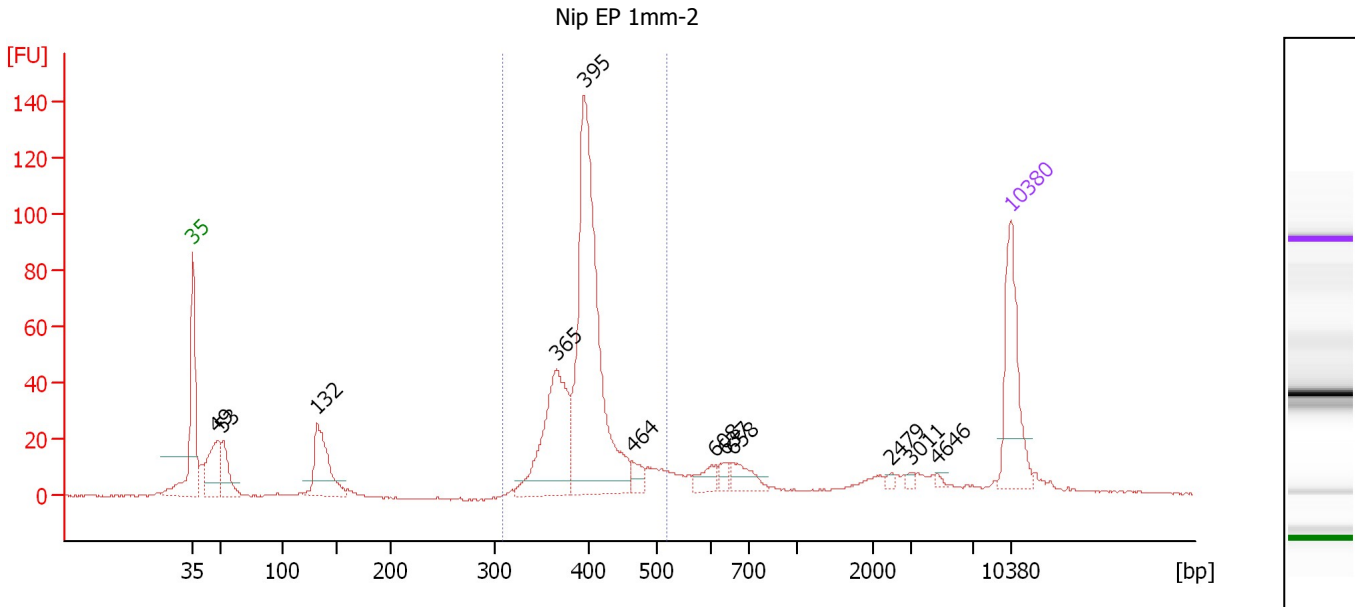
Region table for sample 4 : Nip EP 1mm-1

From [bp]	To [bp]	Average Size [bp]	Molarity [pmol/l]	Conc. [pg/μl]	Corr. Area	% of Total	Size distribution in CV [%]	Color
294	464	390	2,183.9	560.35	564.5	61	6.2	Blue

Assay Class: High Sensitivity DNA Assay
 Data Path: C:\...ents and Settings\Bioanalyzer\2012-11-09\2012-11-09_002.xad

Created: 11/9/2012 9:01:05 AM
 Modified: 11/9/2012 9:48:23 AM

Electropherogram Summary Continued ...



Overall Results for sample 5 : Nip EP 1mm-2

Number of peaks found: 12 Corr. Area 1: 573.4
 Noise: 0.2

Peak table for sample 5 : Nip EP 1mm-2

Peak	Size [bp]	Conc. [pg/μl]	Molarity [pmol/l]	Observations
1	35	125.00	5,411.3	Lower Marker
2	49	79.62	2,472.9	
3	53	46.88	1,341.4	
4	132	95.29	1,091.5	
5	365	160.07	663.8	
6	395	371.02	1,424.2	
7	464	14.51	47.4	
8	608	15.61	38.9	
9	637	9.54	22.7	
10	658	21.76	50.1	
11	2,479	3.10	1.9	
12	3,011	2.88	1.4	
13	4,646	2.55	0.8	
14	10,380	75.00	10.9	Upper Marker

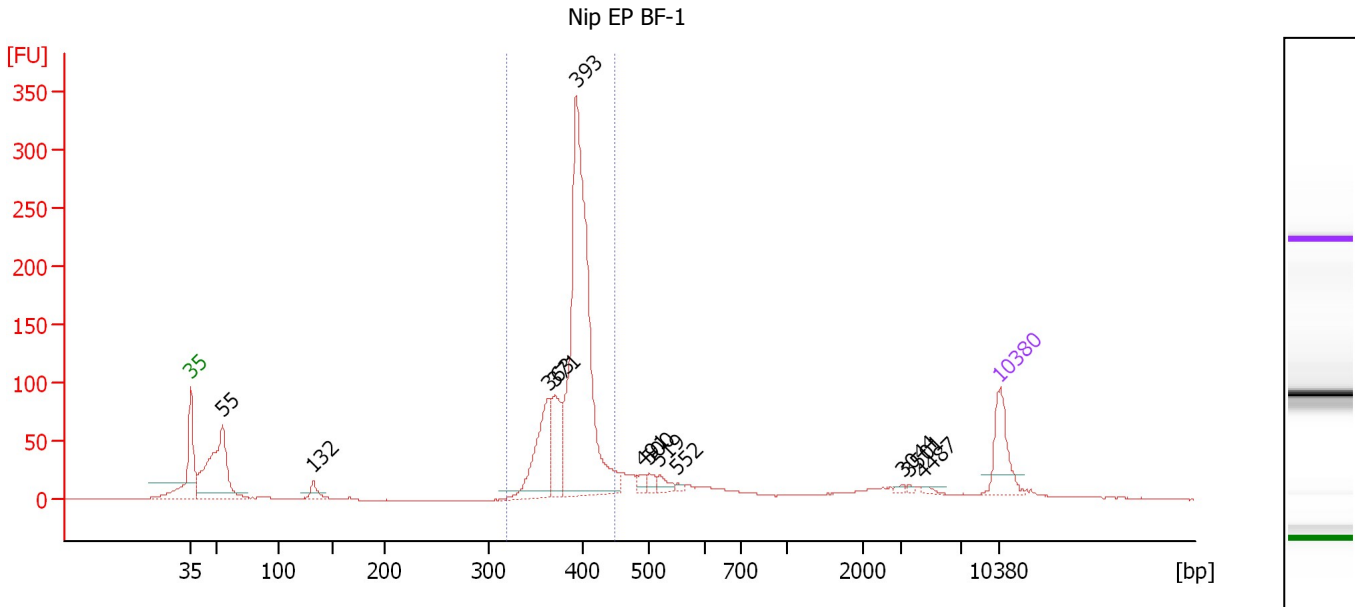
Region table for sample 5 : Nip EP 1mm-2

From [bp]	To [bp]	Average Size [bp]	Molarity [pmol/l]	Conc. [pg/μl]	Corr. Area	% of Total	Size distribution in CV [%]	Color
309	520	399	2,155.8	564.06	573.4	62	8.8	Blue

Assay Class: High Sensitivity DNA Assay
 Data Path: C:\...ents and Settings\Bioanalyzer\2012-11-09\2012-11-09_002.xad

Created: 11/9/2012 9:01:05 AM
 Modified: 11/9/2012 9:48:23 AM

Electropherogram Summary Continued ...



Overall Results for sample 6 : Nip EP BF-1

Number of peaks found: 12 Corr. Area 1: 1,117.2
 Noise: 0.3

Peak table for sample 6 : Nip EP BF-1

Peak	Size [bp]	Conc. [pg/μl]	Molarity [pmol/l]	Observations
1	35	125.00	5,411.3	Lower Marker
2	55	354.69	9,858.6	
3	132	26.73	306.7	
4	363	182.91	762.7	
5	371	113.22	462.6	
6	393	792.77	3,055.8	
7	491	15.42	47.5	
8	500	14.87	45.0	
9	519	17.63	51.5	
10	552	5.42	14.9	
11	3,044	4.31	2.1	
12	3,501	3.11	1.3	
13	4,487	4.91	1.7	
14	10,380	75.00	10.9	Upper Marker

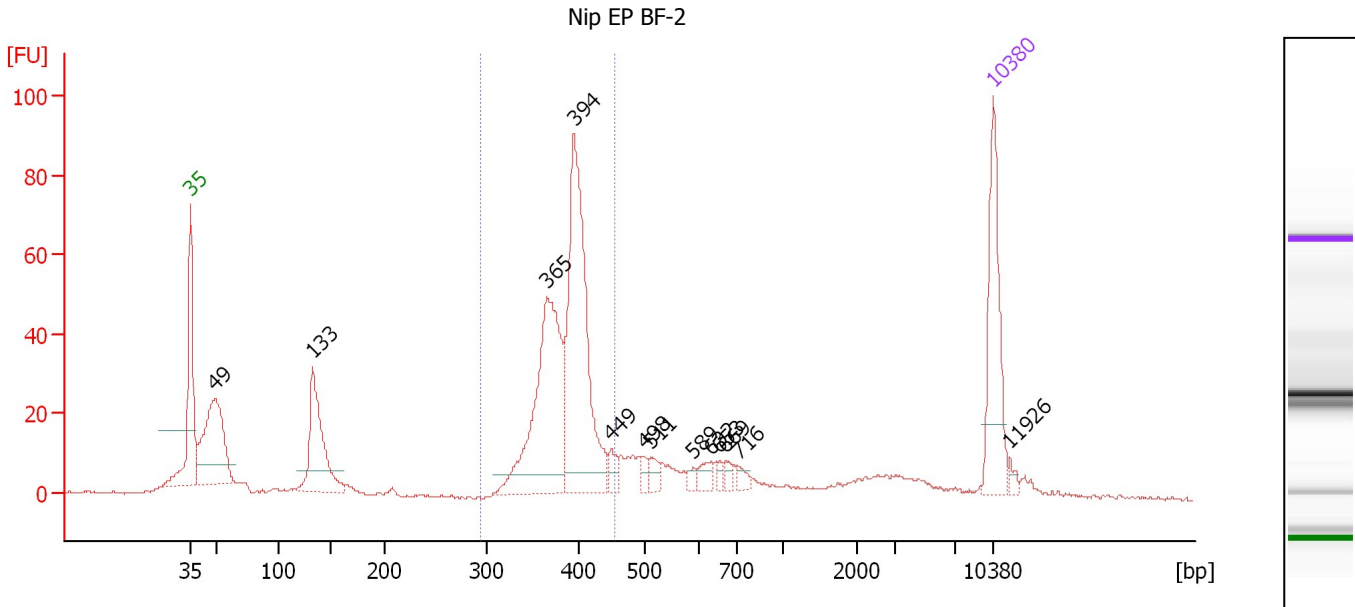
Region table for sample 6 : Nip EP BF-1

From [bp]	To [bp]	Average Size [bp]	Molarity [pmol/l]	Conc. [pg/μl]	Corr. Area	% of Total	Size distribution in CV [%]	Color
319	448	390	4,264.9	1,095.21	1,117.2	63	5.5	Blue

Assay Class: High Sensitivity DNA Assay
 Data Path: C:\...ents and Settings\Bioanalyzer\2012-11-09\2012-11-09_002.xad

Created: 11/9/2012 9:01:05 AM
 Modified: 11/9/2012 9:48:23 AM

Electropherogram Summary Continued ...



Overall Results for sample 7 : Nip EP BF-2

Number of peaks found: 13 Corr. Area 1: 420.5
 Noise: 0.4

Peak table for sample 7 : Nip EP BF-2

Peak	Size [bp]	Conc. [pg/μl]	Molarity [pmol/l]	Observations
1	35	125.00	5,411.3	Lower Marker
2	49	163.43	5,047.4	
3	133	121.33	1,386.8	
4	365	213.91	888.1	
5	394	250.02	960.6	
6	449	12.55	42.4	
7	498	7.26	22.1	
8	511	11.15	33.0	
9	589	5.39	13.9	
10	632	11.07	26.6	
11	653	5.23	12.1	
12	669	6.88	15.6	
13	716	6.72	14.2	
14	10,380	75.00	10.9	Upper Marker
15	11,926	0.00	0.0	

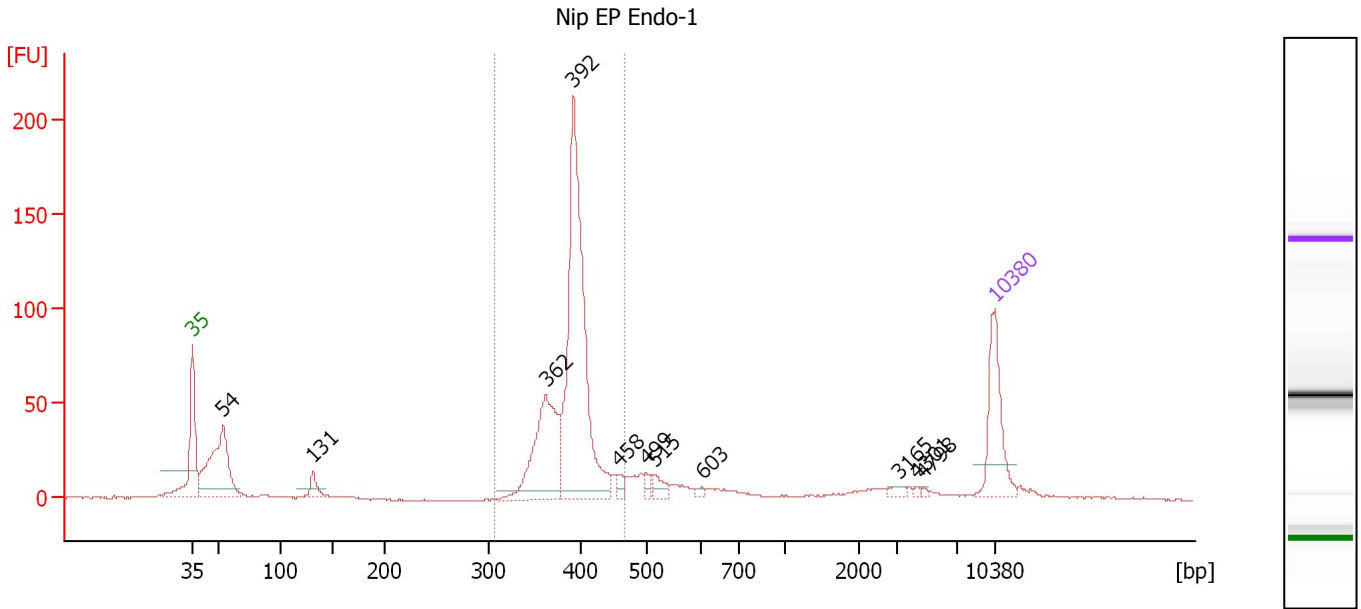
Region table for sample 7 : Nip EP BF-2

From [bp]	To [bp]	Average Size [bp]	Molarity [pmol/l]	Conc. [pg/μl]	Corr. Area	% of Total	Size distribution in CV [%]	Color
295	454	386	1,880.4	476.97	420.5	49	6.7	Blue

Assay Class: High Sensitivity DNA Assay
 Data Path: C:\...ents and Settings\Bioanalyzer\2012-11-09\2012-11-09_002.xad

Created: 11/9/2012 9:01:05 AM
 Modified: 11/9/2012 9:48:23 AM

Electropherogram Summary Continued ...



Overall Results for sample 8 : Nip EP Endo-1

Number of peaks found: 11 Corr. Area 1: 643.8
 Noise: 0.2

Peak table for sample 8 : Nip EP Endo-1

Peak	Size [bp]	Conc. [pg/μl]	Molarity [pmol/l]	Observations
1	35	125.00	5,411.3	Lower Marker
2	54	215.84	6,071.1	
3	131	24.90	287.9	
4	362	183.01	765.8	
5	392	429.81	1,661.2	
6	458	11.31	37.5	
7	499	9.71	29.5	
8	515	16.38	48.2	
9	603	4.51	11.3	
10	3,165	5.87	2.8	
11	4,301	2.23	0.8	
12	4,798	1.85	0.6	
13	10,380	75.00	10.9	Upper Marker

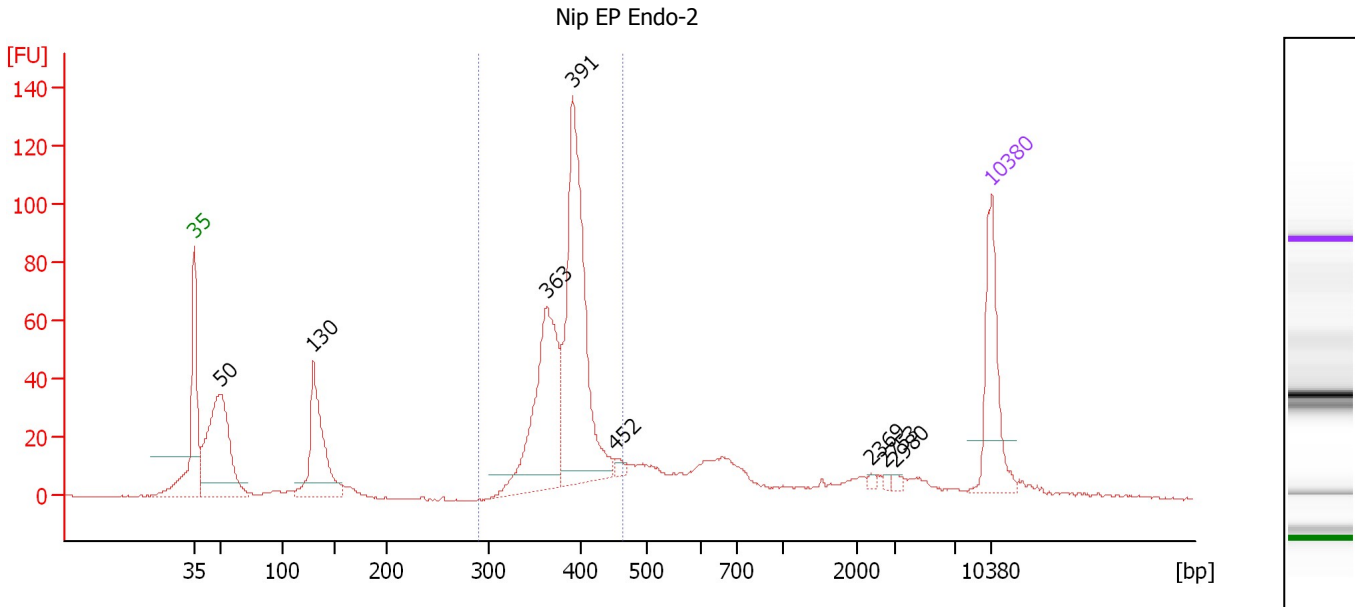
Region table for sample 8 : Nip EP Endo-1

From [bp]	To [bp]	Average Size [bp]	Molarity [pmol/l]	Conc. [pg/μl]	Corr. Area	% of Total	Size distribution in CV [%]	Color
308	465	389	2,416.3	619.30	643.8	62	6.1	Blue

Assay Class: High Sensitivity DNA Assay
 Data Path: C:\...ents and Settings\Bioanalyzer\2012-11-09\2012-11-09_002.xad

Created: 11/9/2012 9:01:05 AM
 Modified: 11/9/2012 9:48:23 AM

Electropherogram Summary Continued ...



Overall Results for sample 9 : Nip EP Endo-2

Number of peaks found: 8 Corr. Area 1: 586.6
 Noise: 0.3

Peak table for sample 9 : Nip EP Endo-2

Peak	Size [bp]	Conc. [pg/μl]	Molarity [pmol/l]	Observations
1	35	125.00	5,411.3	Lower Marker
2	50	251.31	7,652.2	
3	130	154.68	1,799.8	
4	363	204.77	854.2	
5	391	305.85	1,185.1	
6	452	6.54	22.0	
7	2,369	2.99	1.9	
8	2,753	2.54	1.4	
9	2,980	2.95	1.5	
10	10,380	75.00	10.9	Upper Marker

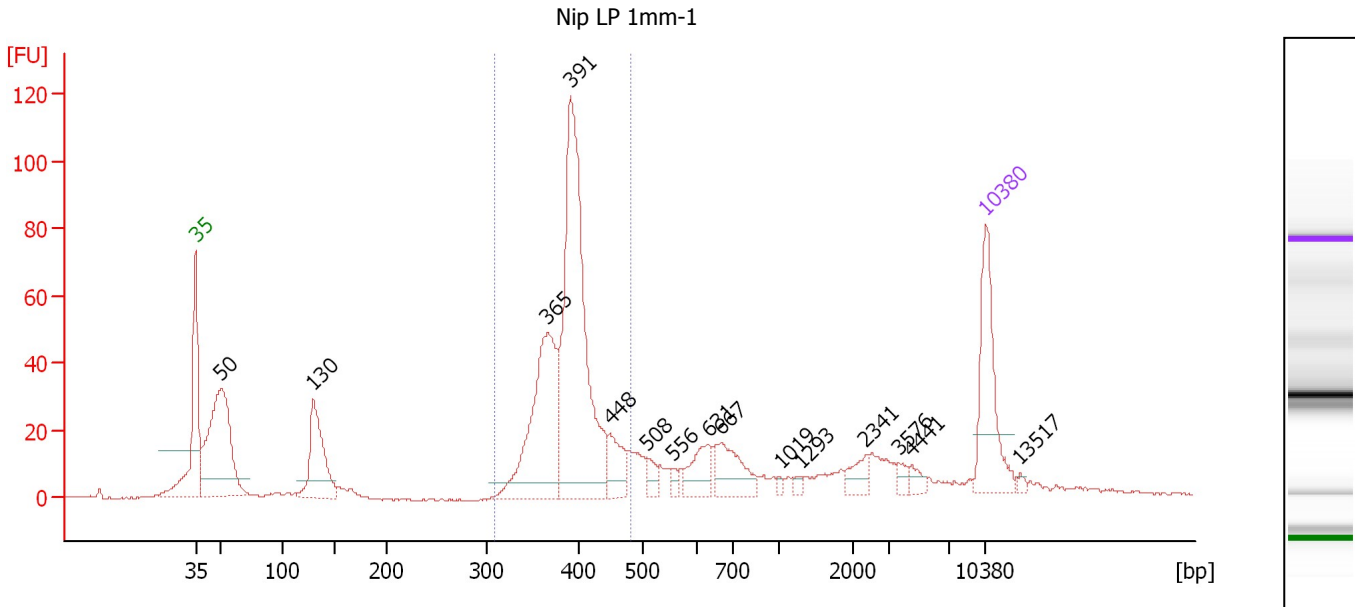
Region table for sample 9 : Nip EP Endo-2

From [bp]	To [bp]	Average Size [bp]	Molarity [pmol/l]	Conc. [pg/μl]	Corr. Area	% of Total	Size distribution in CV [%]	Color
289	463	385	2,210.0	560.27	586.6	51	6.9	Blue

Assay Class: High Sensitivity DNA Assay
 Data Path: C:\...ents and Settings\Bioanalyzer\2012-11-09\2012-11-09_002.xad

Created: 11/9/2012 9:01:05 AM
 Modified: 11/9/2012 9:48:23 AM

Electropherogram Summary Continued ...



Overall Results for sample 10 : Nip LP 1mm-1

Number of peaks found: 15 Corr. Area 1: 542.5
 Noise: 0.3

Peak table for sample 10 : Nip LP 1mm-1

Peak	Size [bp]	Conc. [pg/μl]	Molarity [pmol/l]	Observations
1	35	125.00	5,411.3	Lower Marker
2	50	247.62	7,520.1	
3	130	115.62	1,351.0	
4	365	194.32	805.8	
5	391	358.54	1,388.9	
6	448	35.63	120.4	
7	508	12.88	38.4	
8	556	6.03	16.4	
9	631	34.51	82.9	
10	667	48.78	110.8	
11	1,019	3.12	4.6	
12	1,293	4.56	5.3	
13	2,341	15.38	10.0	
14	3,576	7.15	3.0	
15	4,441	7.99	2.7	
16	10,380	75.00	10.9	Upper Marker
17	13,517	0.00	0.0	

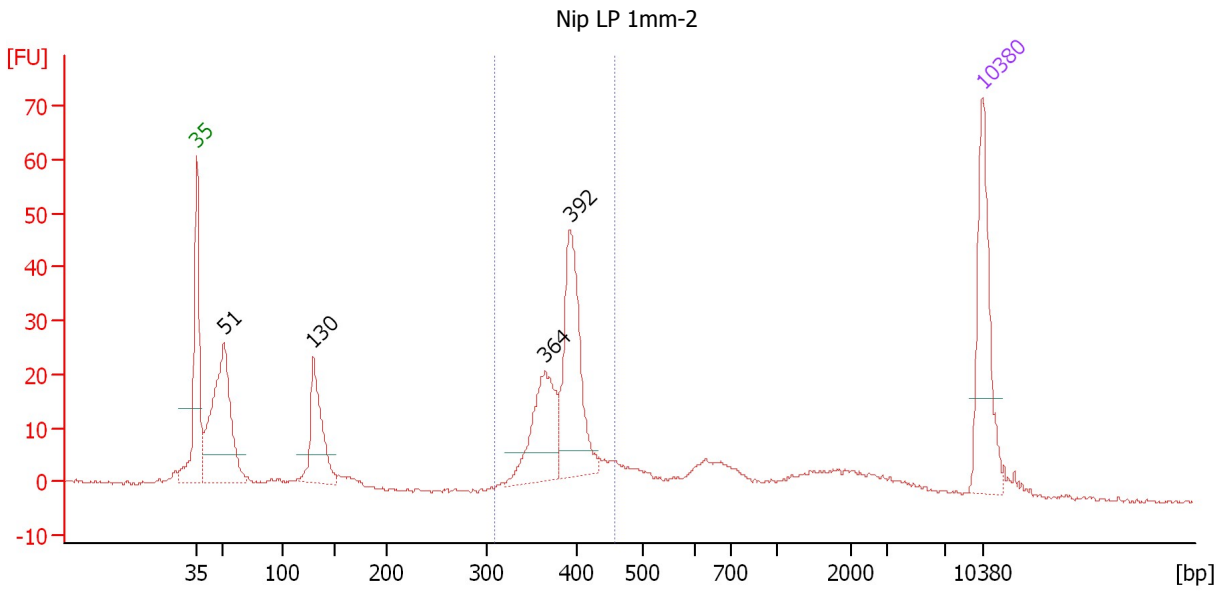
Region table for sample 10 : Nip LP 1mm-1

From [bp]	To [bp]	Average Size [bp]	Molarity [pmol/l]	Conc. [pg/μl]	Corr. Area	% of Total	Size distribution in CV [%]	Color
309	481	392	2,254.6	580.46	542.5	50	7.9	Blue

Assay Class: High Sensitivity DNA Assay
 Data Path: C:\...ents and Settings\Bioanalyzer\2012-11-09\2012-11-09_002.xad

Created: 11/9/2012 9:01:05 AM
 Modified: 11/9/2012 9:48:23 AM

Electropherogram Summary Continued ...



Overall Results for sample 11 : Nip LP 1mm-2

Number of peaks found: 4 Corr. Area 1: 206.6
 Noise: 0.4

Peak table for sample 11 : Nip LP 1mm-2

Peak	Size [bp]	Conc. [pg/μl]	Molarity [pmol/l]	Observations
1	35	125.00	5,411.3	Lower Marker
2	51	207.28	6,123.9	
3	130	94.42	1,102.4	
4	364	92.76	386.2	
5	392	134.08	518.0	
6	10,380	75.00	10.9	Upper Marker

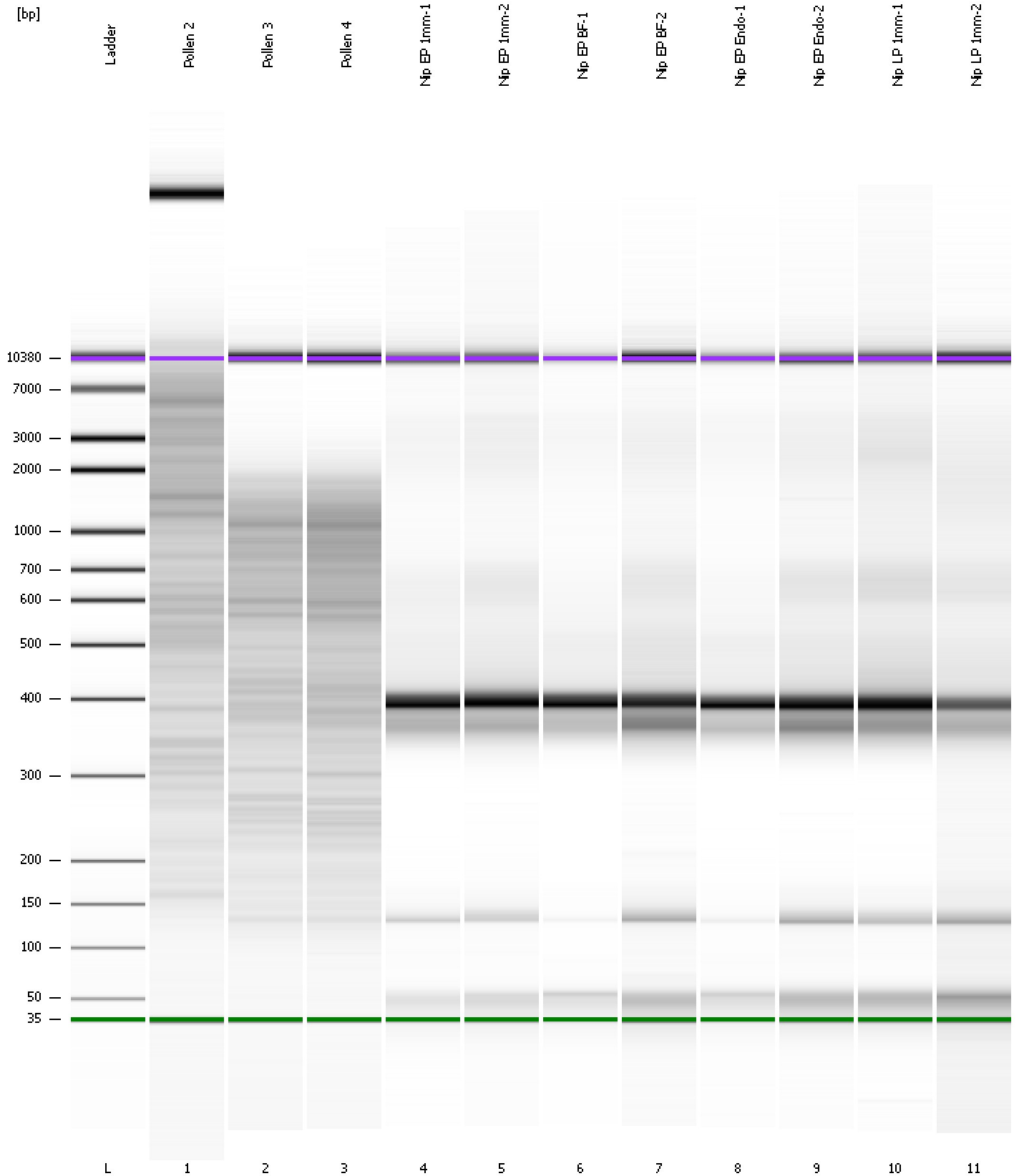
Region table for sample 11 : Nip LP 1mm-2

From [bp]	To [bp]	Average Size [bp]	Molarity [pmol/l]	Conc. [pg/μl]	Corr. Area	% of Total	Size distribution in CV [%]	Color
309	458	385	1,086.4	275.28	206.6	39	6.8	Blue

Assay Class: High Sensitivity DNA Assay
Data Path: C:\...ents and Settings\Bioanalyzer\2012-11-09\2012-11-09_002.xad

Created: 11/9/2012 9:01:05 AM
Modified: 11/9/2012 9:48:23 AM

Gel Image



Assay Class: High Sensitivity DNA Assay
 Data Path: C:\...ents and Settings\Bioanalyzer\2012-11-09\2012-11-09_002.xad

Created: 11/9/2012 9:01:05 AM
 Modified: 11/9/2012 9:48:23 AM

Run Logbook

Description	Number	Source	Category	Sub Category	Time	Time Zone	User	Host
Run ended on port 1 (Number of wells acquired: 12)		Instrument	Run		11/9/2012 9:42:55 AM	(GMT --08:00) Pacific Standard Time	UC Davis	D8XSMGH1
Run started on port 1 (File: C:\Documents and Settings\Bioanalyzer\2012-11-09\2012-11-09_002.xad)		Instrument	Run		11/9/2012 9:01:11 AM	(GMT --08:00) Pacific Standard Time	UC Davis	D8XSMGH1
Product Number : G2938B		Instrument	Run		11/9/2012 9:01:11 AM	(GMT --08:00) Pacific Standard Time	UC Davis	D8XSMGH1
Name :		Instrument	Run		11/9/2012 9:01:11 AM	(GMT --08:00) Pacific Standard Time	UC Davis	D8XSMGH1
Vendor : Agilent Technologies		Instrument	Run		11/9/2012 9:01:11 AM	(GMT --08:00) Pacific Standard Time	UC Davis	D8XSMGH1
Serial# : DE13701086		Instrument	Run		11/9/2012 9:01:11 AM	(GMT --08:00) Pacific Standard Time	UC Davis	D8XSMGH1
Firmware : C.01.069		Instrument	Run		11/9/2012 9:01:11 AM	(GMT --08:00) Pacific Standard Time	UC Davis	D8XSMGH1
Cartridge : Electrode		Instrument	Run		11/9/2012 9:01:11 AM	(GMT --08:00) Pacific Standard Time	UC Davis	D8XSMGH1