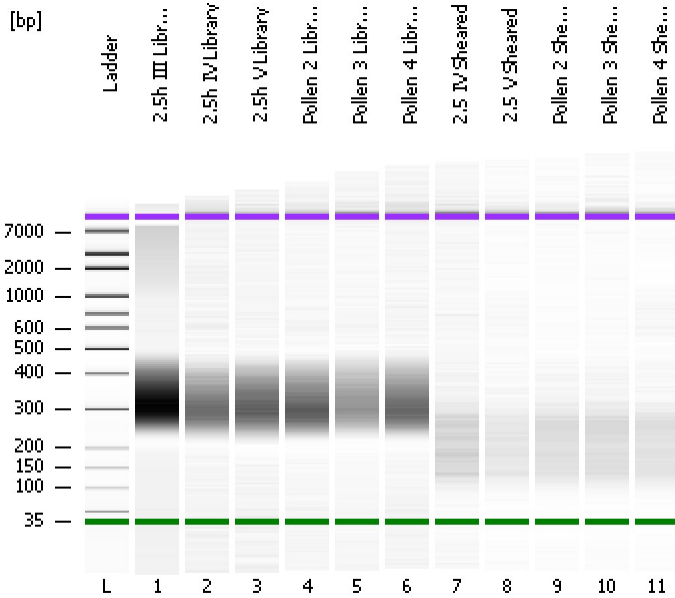


Assay Class: High Sensitivity DNA Assay
Data Path: C:\...ents and Settings\Bioanalyzer\2012-11-13\2012-11-13_001.xad

Created: 11/13/2012 10:12:14 AM
Modified: 11/13/2012 10:54:47 AM

Electrophoresis File Run Summary



Instrument Information:

Instrument Name: DE13701086 Firmware: C.01.069
Serial#: DE13701086 Type: G2938B

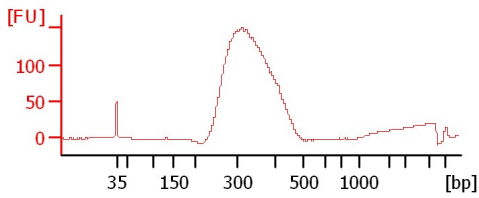
Assay Information:

Assay Origin Path: C:\Program Files\Agilent\2100 bioanalyzer\2100 expert\assays\dsDNA\High Sensitivity DNA.xsy
Assay Class: High Sensitivity DNA Assay
Version: 1.03
Assay Comments: Copyright © 2003-2010 Agilent Technologies

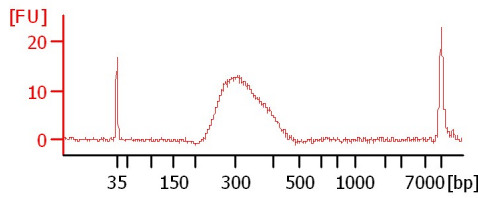
Chip Information:

Chip Lot #:
Reagent Kit Lot #:
Chip Comments:

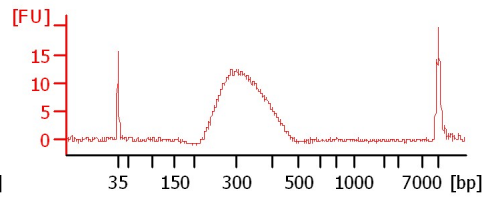
2.5h III Library



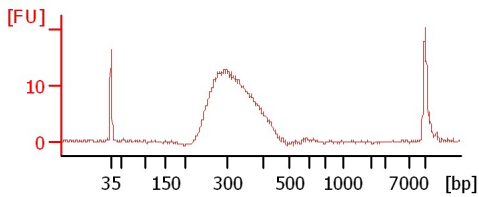
2.5h IV Library



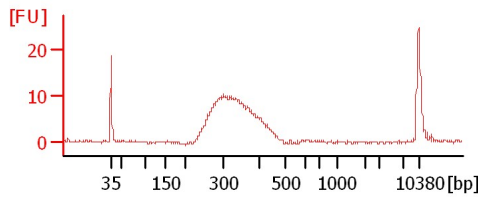
2.5h V Library



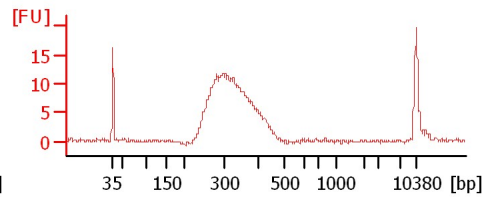
Pollen 2 Library



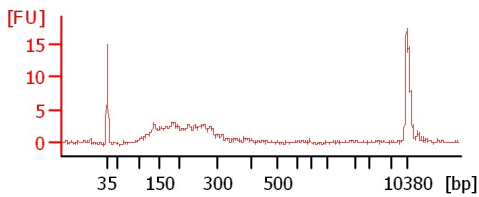
Pollen 3 Library



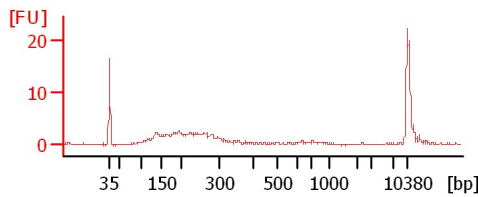
Pollen 4 Library



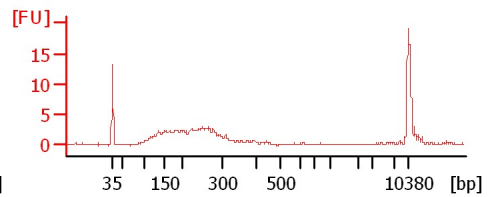
2.5 IV Sheared



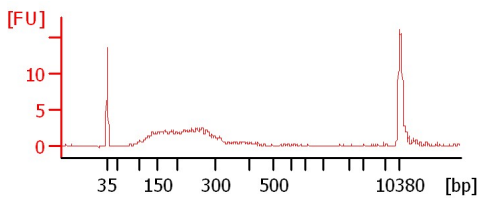
2.5 V Sheared



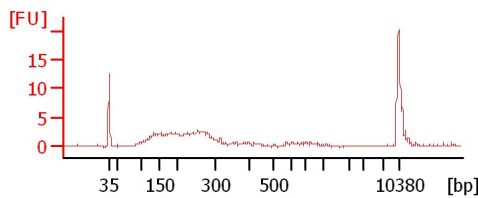
Pollen 2 Sheared



Pollen 3 Sheared



Pollen 4 Sheared



Assay Class: High Sensitivity DNA Assay
 Data Path: C:\...ents and Settings\Bioanalyzer\2012-11-13\2012-11-13_001.xad

Created: 11/13/2012 10:12:14 AM
 Modified: 11/13/2012 10:54:47 AM

Electrophoresis File Run Summary (Chip Summary)

Sample Name	Sample Comment	Rest. Digest	Status	Observation	Result Label	Result Color
2.5h III Library		<input type="checkbox"/>	✓			
2.5h IV Library		<input type="checkbox"/>	✓			
2.5h V Library		<input type="checkbox"/>	✓			
Pollen 2 Library		<input type="checkbox"/>	✓			
Pollen 3 Library		<input type="checkbox"/>	✓			
Pollen 4 Library		<input type="checkbox"/>	✓			
2.5 IV Sheared		<input type="checkbox"/>	✓			
2.5 V Sheared		<input type="checkbox"/>	✓			
Pollen 2 Sheared		<input type="checkbox"/>	✓			
Pollen 3 Sheared		<input type="checkbox"/>	✓			
Pollen 4 Sheared		<input type="checkbox"/>	✓			
Ladder		<input type="checkbox"/>	✓			

Chip Lot #

Reagent Kit Lot #

Chip Comments :

Assay Class: High Sensitivity DNA Assay
Data Path: C:\...ents and Settings\Bioanalyzer\2012-11-13\2012-11-13_001.xad

Created: 11/13/2012 10:12:14 AM
Modified: 11/13/2012 10:54:47 AM

Electrophoresis Assay Details

General Analysis Settings

Number of Available Sample and Ladder Wells (Max.) : 12
Minimum Visible Range [s] : 32
Maximum Visible Range [s] : 138
Start Analysis Time Range [s] : 33
End Analysis Time Range [s] : 137.5
Ladder Concentration [pg/μl] : 1950
Uses Standard Area for Ladder Fragments
Lower Marker Concentration [pg/μl] : 125
Upper Marker Concentration [pg/μl] : 75
Used Upper Marker for Quantitation
Standard Curve Fit is Point to Point
Show Data Aligned to Lower and Upper Marker

Integrator Settings

Integration Start Time [s] : 33.05
Integration End Time [s] : 137
Slope Threshold : 0.8
Height Threshold [FU] : 5
Area Threshold : 0.1
Width Threshold [s] : 0.6
Baseline Plateau [s] : 0.5

Filter Settings

Filter Width [s] : 0.5
Polynomial Order : 4

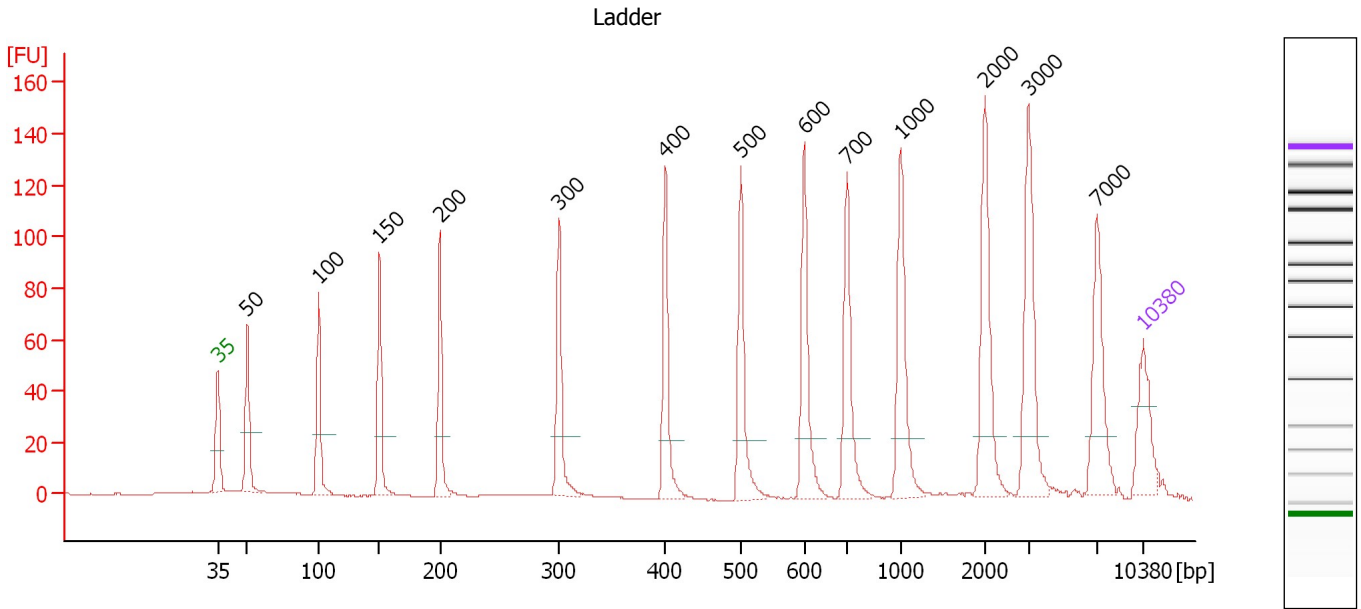
Ladder

Ladder Peak	Size	Area
1	35	160
2	50	210
3	100	208
4	150	221
5	200	242
6	300	270
7	400	305
8	500	306
9	600	336
10	700	321
11	1000	366
12	2000	413
13	3000	411
14	7000	400
15	10380	214

Assay Class: High Sensitivity DNA Assay
 Data Path: C:\...ents and Settings\Bioanalyzer\2012-11-13\2012-11-13_001.xad

Created: 11/13/2012 10:12:14 AM
 Modified: 11/13/2012 10:54:47 AM

Electropherogram Summary



Overall Results for Ladder

Noise: 0.2

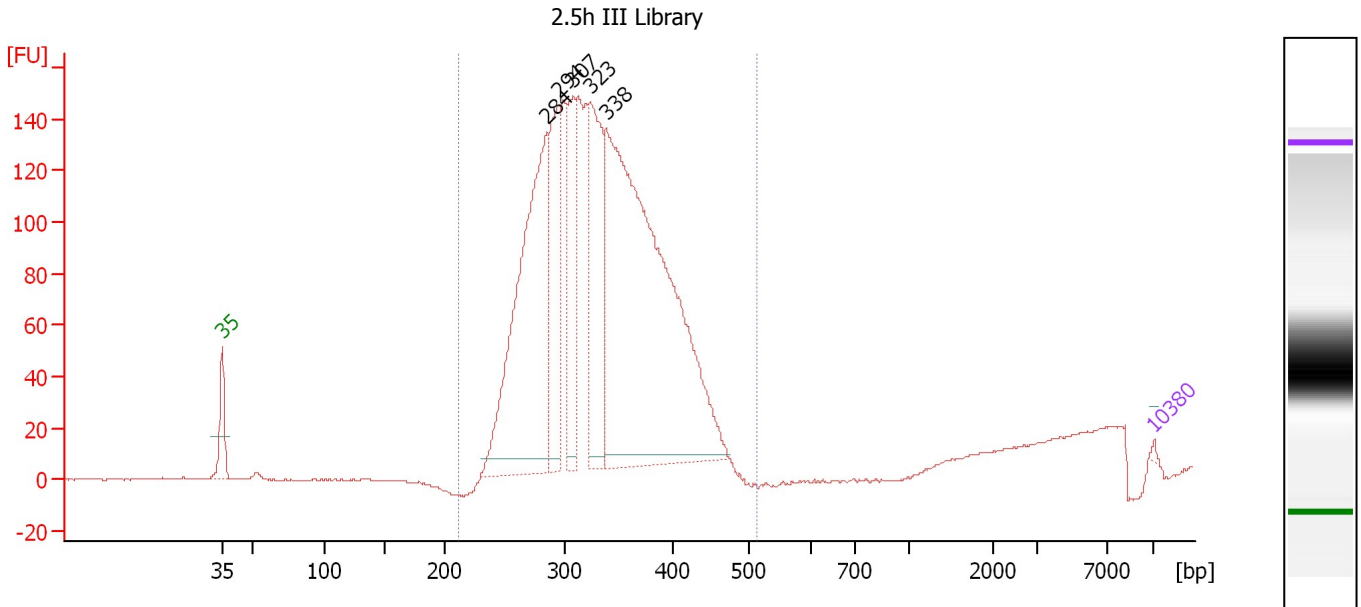
Peak table for Ladder

Peak	Size [bp]	Conc. [pg/μl]	Molarity [pmol/l]	Observations
1	35	125.00	5,411.3	Lower Marker
2	50	150.00	4,545.5	Ladder Peak
3	100	150.00	2,272.7	Ladder Peak
4	150	150.00	1,515.2	Ladder Peak
5	200	150.00	1,136.4	Ladder Peak
6	300	150.00	757.6	Ladder Peak
7	400	150.00	568.2	Ladder Peak
8	500	150.00	454.5	Ladder Peak
9	600	150.00	378.8	Ladder Peak
10	700	150.00	324.7	Ladder Peak
11	1,000	150.00	227.3	Ladder Peak
12	2,000	150.00	113.6	Ladder Peak
13	3,000	150.00	75.8	Ladder Peak
14	7,000	150.00	32.5	Ladder Peak
15	10,380	75.00	10.9	Upper Marker

Assay Class: High Sensitivity DNA Assay
 Data Path: C:\...ents and Settings\Bioanalyzer\2012-11-13\2012-11-13_001.xad

Created: 11/13/2012 10:12:14 AM
 Modified: 11/13/2012 10:54:47 AM

Electropherogram Summary Continued ...



Overall Results for sample 1 : 2.5h III Library

Number of peaks found: 5 Corr. Area 1: 2,515.7
 Noise: 0.2

Peak table for sample 1 : 2.5h III Library

Peak	Size [bp]	Conc. [pg/μl]	Molarity [pmol/l]	Observations
1	35	125.00	5,411.3	Lower Marker
2	284	21,753.66	115,873.4	
3	294	7,303.06	37,667.0	
4	307	5,973.02	29,482.4	
5	323	9,631.69	45,119.2	
6	338	38,074.00	170,713.0	
7	10,380	75.00	10.9	Upper Marker

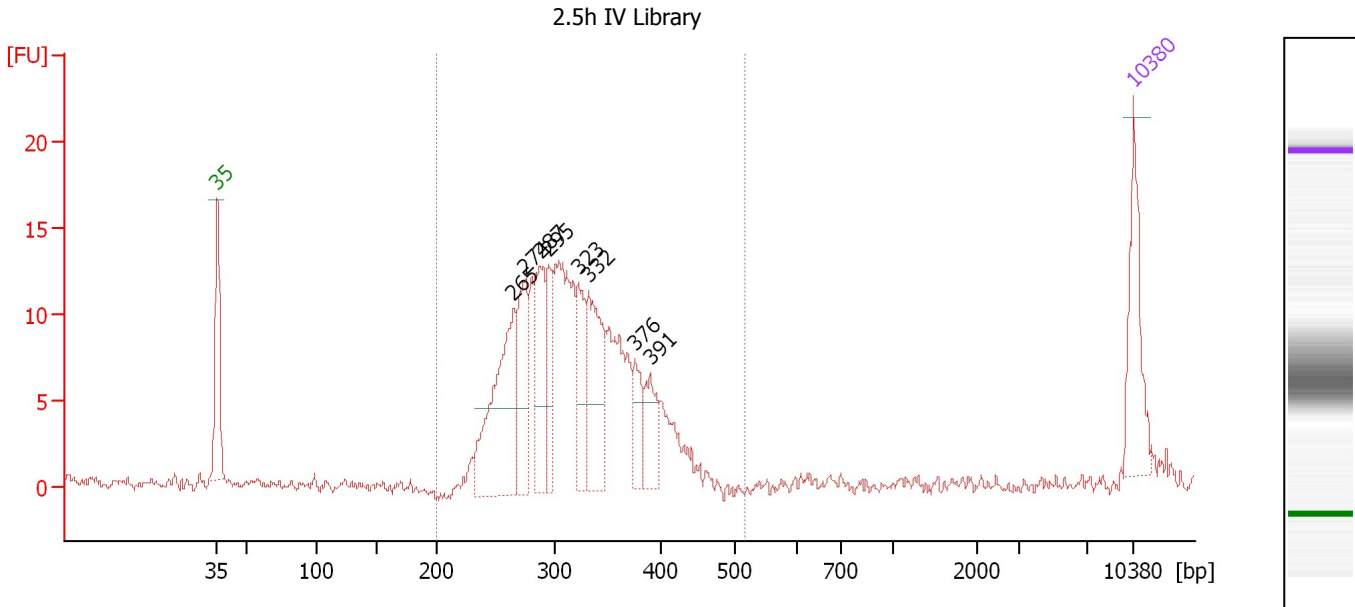
Region table for sample 1 : 2.5h III Library

From [bp]	To [bp]	Average Size [bp]	Molarity [pmol/l]	Conc. [pg/μl]	Corr. Area	% of Total	Size distribution in CV [%]	Color
210	513	332	450,671.3	95,685.50	2,515.7	94	15.2	Blue

Assay Class: High Sensitivity DNA Assay
 Data Path: C:\...ents and Settings\Bioanalyzer\2012-11-13\2012-11-13_001.xad

Created: 11/13/2012 10:12:14 AM
 Modified: 11/13/2012 10:54:47 AM

Electropherogram Summary Continued ...



Overall Results for sample 2 : 2.5h IV Library

Number of peaks found: 8 Corr. Area 1: 204.6
 Noise: 0.3

Peak table for sample 2 : 2.5h IV Library

Peak	Size [bp]	Conc. [pg/μl]	Molarity [pmol/l]	Observations
1	35	125.00	5,411.3	Lower Marker
2	265	237.69	1,360.8	
3	274	115.42	639.0	
4	287	115.96	611.7	
5	295	71.19	365.8	
6	323	81.93	384.7	
7	332	147.45	673.3	
8	376	46.89	189.0	
9	391	54.60	211.7	
10	10,380	75.00	10.9	Upper Marker

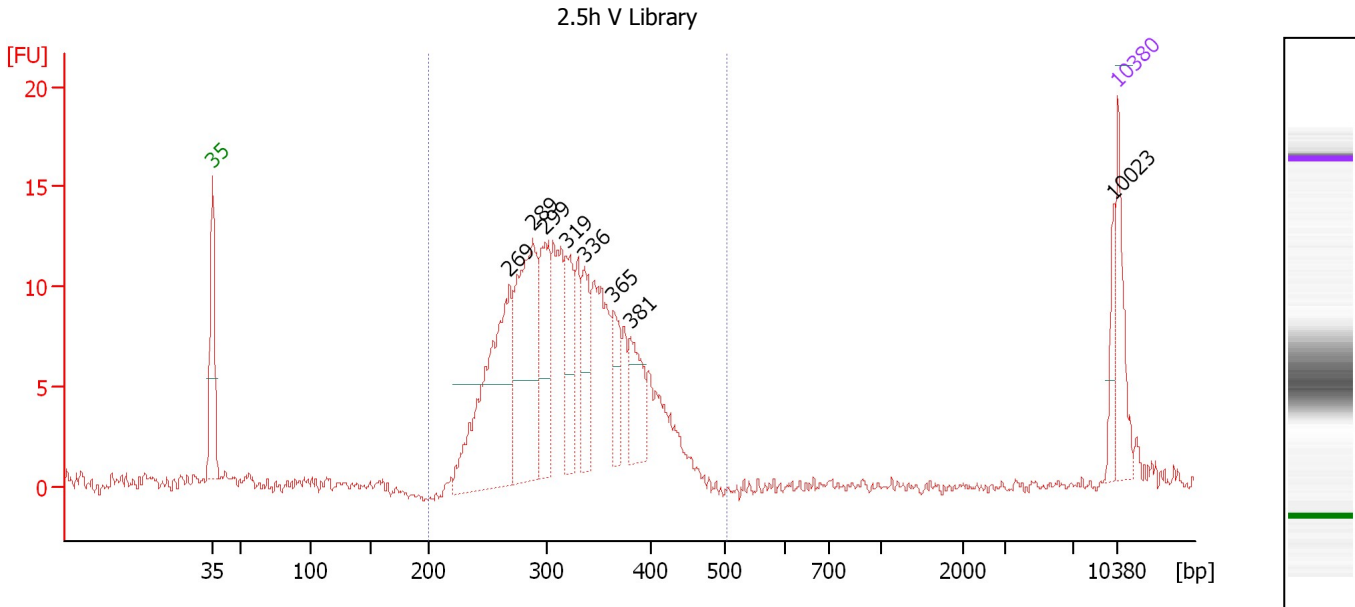
Region table for sample 2 : 2.5h IV Library

From [bp]	To [bp]	Average Size [bp]	Molarity [pmol/l]	Conc. [pg/μl]	Corr. Area	% of Total	Size distribution in CV [%]	Color
200	515	319	6,386.1	1,305.56	204.6	97	15.2	Blue

Assay Class: High Sensitivity DNA Assay
 Data Path: C:\...ents and Settings\Bioanalyzer\2012-11-13\2012-11-13_001.xad

Created: 11/13/2012 10:12:14 AM
 Modified: 11/13/2012 10:54:47 AM

Electropherogram Summary Continued ...



Overall Results for sample 3 : 2.5h V Library

Number of peaks found: 8 Corr. Area 1: 215.6
 Noise: 0.3

Peak table for sample 3 : 2.5h V Library

Peak	Size [bp]	Conc. [pg/μl]	Molarity [pmol/l]	Observations
1	35	125.00	5,411.3	Lower Marker
2	269	421.53	2,378.6	
3	289	335.54	1,761.6	
4	299	150.85	764.2	
5	319	126.07	598.8	
6	336	103.00	463.8	
7	365	68.52	284.6	
8	381	98.91	393.2	
9	10,023	32.47	4.9	
10	10,380	75.00	10.9	Upper Marker

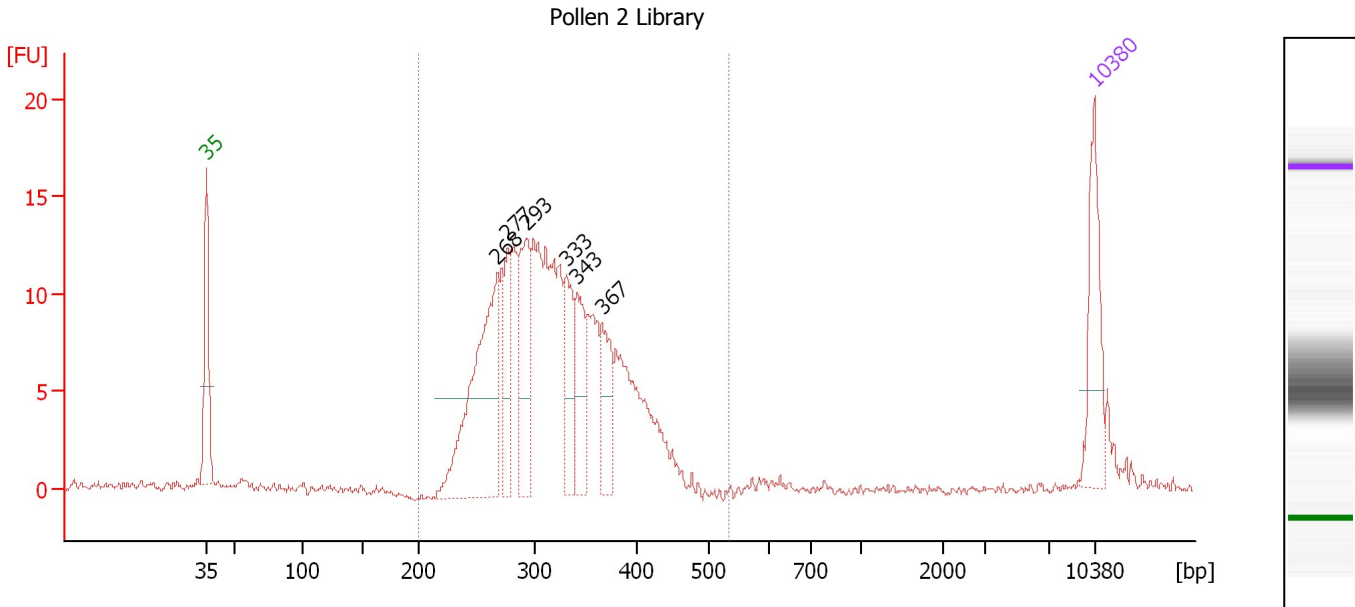
Region table for sample 3 : 2.5h V Library

From [bp]	To [bp]	Average Size [bp]	Molarity [pmol/l]	Conc. [pg/μl]	Corr. Area	% of Total	Size distribution in CV [%]	Color
200	506	323	10,290.8	2,117.94	215.6	89	16.1	Blue

Assay Class: High Sensitivity DNA Assay
 Data Path: C:\...ents and Settings\Bioanalyzer\2012-11-13\2012-11-13_001.xad

Created: 11/13/2012 10:12:14 AM
 Modified: 11/13/2012 10:54:47 AM

Electropherogram Summary Continued ...



Overall Results for sample 4 : Pollen 2 Library

Number of peaks found: 6 Corr. Area 1: 210.0
 Noise: 0.2

Peak table for sample 4 : Pollen 2 Library

Peak	Size [bp]	Conc. [pg/μl]	Molarity [pmol/l]	Observations
1	35	125.00	5,411.3	Lower Marker
2	268	295.35	1,670.0	
3	277	84.92	464.8	
4	293	126.84	655.7	
5	333	83.57	380.7	
6	343	82.33	364.2	
7	367	66.08	273.1	
8	10,380	75.00	10.9	Upper Marker

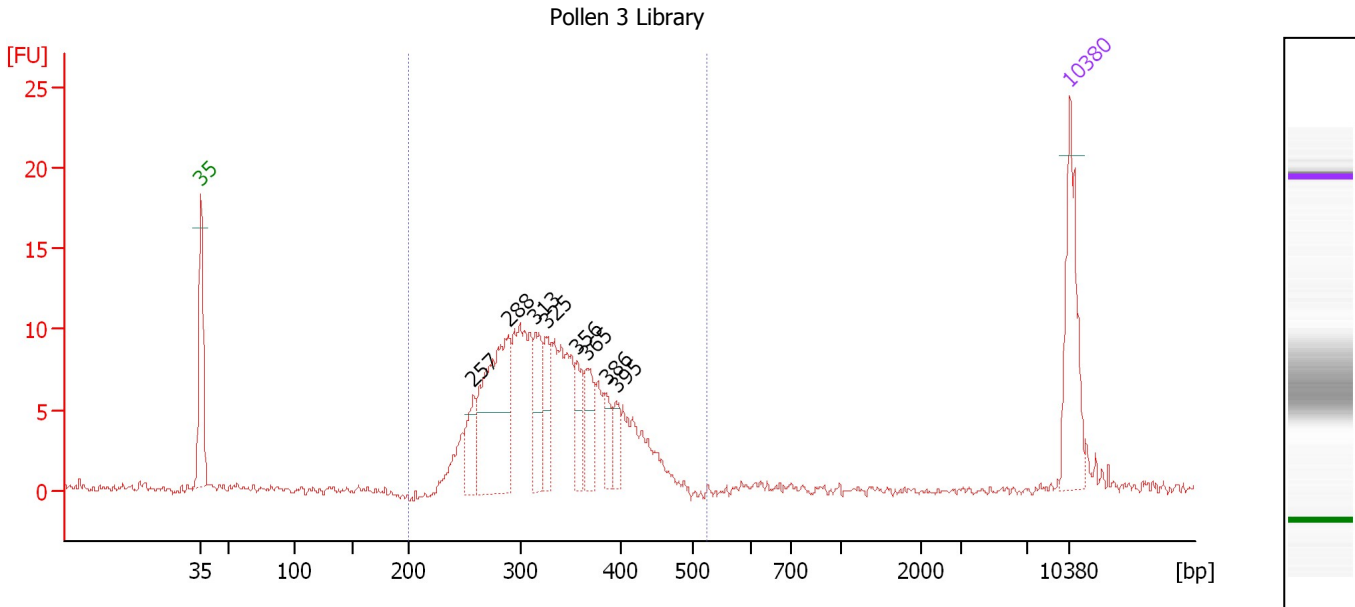
Region table for sample 4 : Pollen 2 Library

From [bp]	To [bp]	Average Size [bp]	Molarity [pmol/l]	Conc. [pg/μl]	Corr. Area	% of Total	Size distribution in CV [%]	Color
200	535	321	6,741.8	1,382.02	210.0	97	15.8	Blue

Assay Class: High Sensitivity DNA Assay
 Data Path: C:\...ents and Settings\Bioanalyzer\2012-11-13\2012-11-13_001.xad

Created: 11/13/2012 10:12:14 AM
 Modified: 11/13/2012 10:54:47 AM

Electropherogram Summary Continued ...



Overall Results for sample 5 : Pollen 3 Library

Number of peaks found: 8 Corr. Area 1: 171.1
 Noise: 0.3

Peak table for sample 5 : Pollen 3 Library

Peak	Size [bp]	Conc. [pg/μl]	Molarity [pmol/l]	Observations
1	35	125.00	5,411.3	Lower Marker
2	257	45.05	265.3	
3	288	193.41	1,017.0	
4	313	56.65	273.8	
5	325	47.36	221.0	
6	356	33.41	142.3	
7	365	42.16	175.1	
8	386	24.53	96.4	
9	395	20.76	79.6	
10	10,380	75.00	10.9	Upper Marker

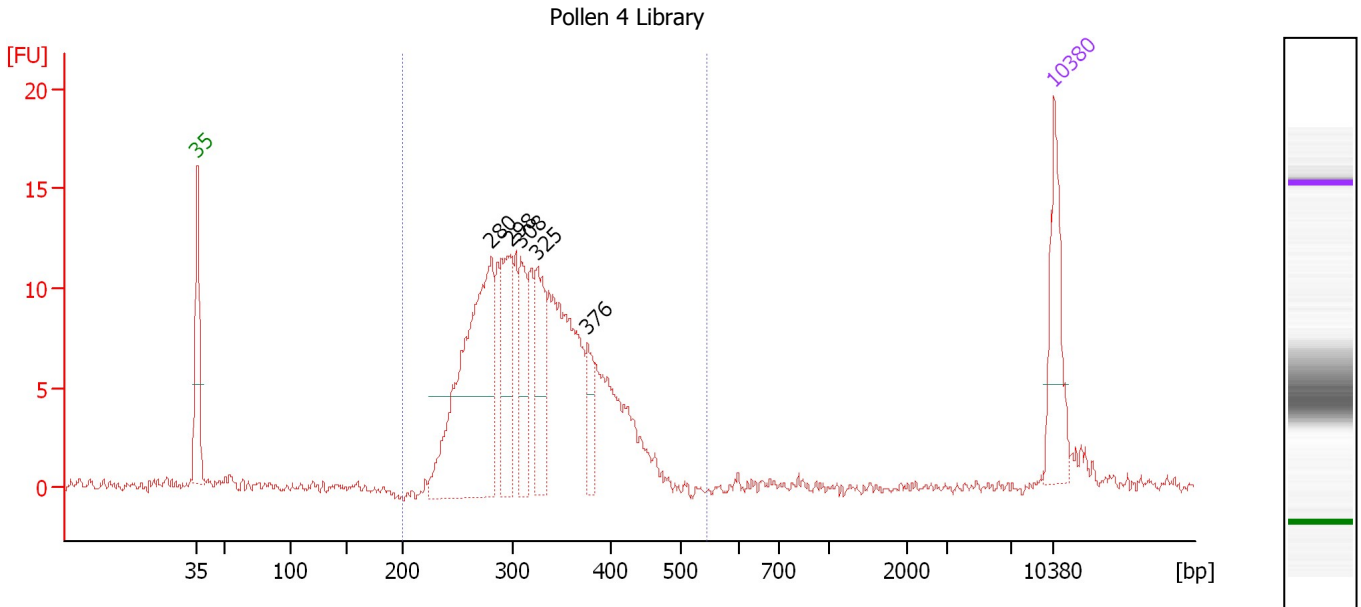
Region table for sample 5 : Pollen 3 Library

From [bp]	To [bp]	Average Size [bp]	Molarity [pmol/l]	Conc. [pg/μl]	Corr. Area	% of Total	Size distribution in CV [%]	Color
200	526	330	4,202.3	884.57	171.1	95	16.1	Blue

Assay Class: High Sensitivity DNA Assay
 Data Path: C:\...ents and Settings\Bioanalyzer\2012-11-13\2012-11-13_001.xad

Created: 11/13/2012 10:12:14 AM
 Modified: 11/13/2012 10:54:47 AM

Electropherogram Summary Continued ...



Overall Results for sample 6 : Pollen 4 Library

Number of peaks found: 5 Corr. Area 1: 198.9
 Noise: 0.3

Peak table for sample 6 : Pollen 4 Library

Peak	Size [bp]	Conc. [pg/μl]	Molarity [pmol/l]	Observations
1	35	125.00	5,411.3	Lower Marker
2	280	393.46	2,125.3	
3	298	128.70	654.7	
4	308	80.58	396.5	
5	325	91.59	427.3	
6	376	42.23	170.3	
7	10,380	75.00	10.9	Upper Marker

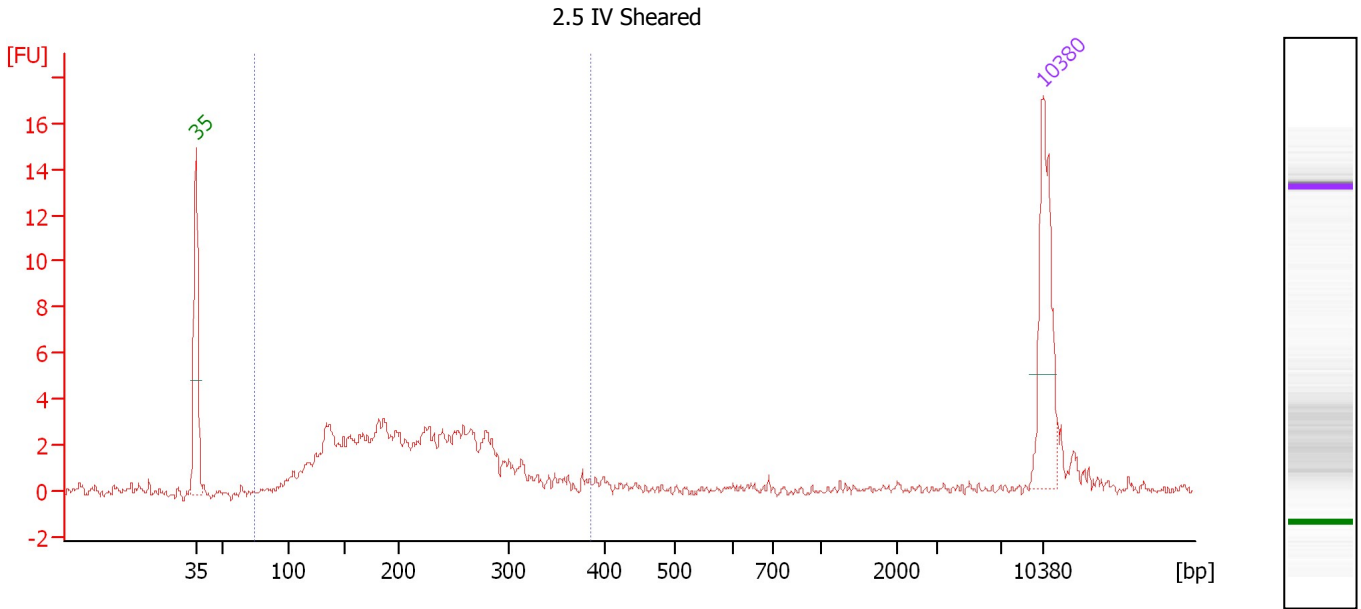
Region table for sample 6 : Pollen 4 Library

From [bp]	To [bp]	Average Size [bp]	Molarity [pmol/l]	Conc. [pg/μl]	Corr. Area	% of Total	Size distribution in CV [%]	Color
200	543	324	6,209.9	1,284.24	198.9	94	16.3	Blue

Assay Class: High Sensitivity DNA Assay
 Data Path: C:\...ents and Settings\Bioanalyzer\2012-11-13\2012-11-13_001.xad

Created: 11/13/2012 10:12:14 AM
 Modified: 11/13/2012 10:54:47 AM

Electropherogram Summary Continued ...



Overall Results for sample 7 : 2.5 IV Sheared

Number of peaks found: 0 Corr. Area 1: 72.9
 Noise: 0.2

Peak table for sample 7 : 2.5 IV Sheared

Peak	Size [bp]	Conc. [pg/μl]	Molarity [pmol/l]	Observations
1	35	125.00	5,411.3	Lower Marker
2	10,380	75.00	10.9	Upper Marker

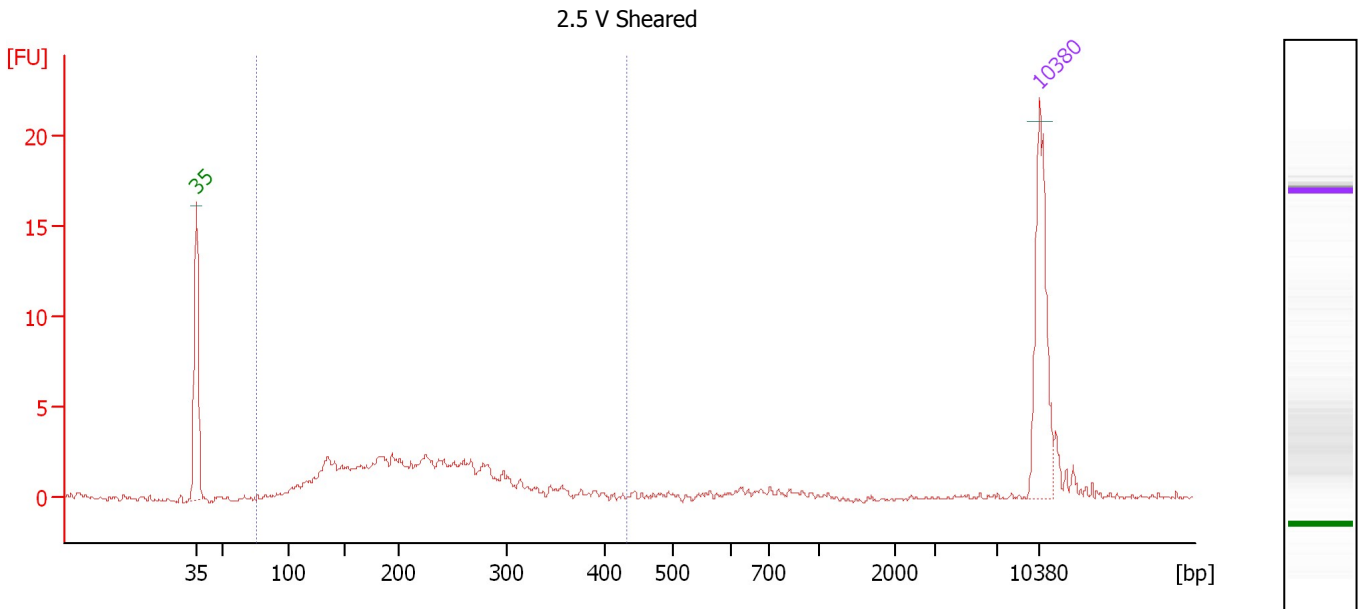
Region table for sample 7 : 2.5 IV Sheared

From [bp]	To [bp]	Average Size [bp]	Molarity [pmol/l]	Conc. [pg/μl]	Corr. Area	% of Total	Size distribution in CV [%]	Color
74	385	215	4,349.0	541.64	72.9	89	29.0	Blue

Assay Class: High Sensitivity DNA Assay
 Data Path: C:\...ents and Settings\Bioanalyzer\2012-11-13\2012-11-13_001.xad

Created: 11/13/2012 10:12:14 AM
 Modified: 11/13/2012 10:54:47 AM

Electropherogram Summary Continued ...



Overall Results for sample 8 : 2.5 V Sheared

Number of peaks found: 0 Corr. Area 1: 59.9
 Noise: 0.1

Peak table for sample 8 : 2.5 V Sheared

Peak	Size [bp]	Conc. [pg/μl]	Molarity [pmol/l]	Observations
1	35	125.00	5,411.3	Lower Marker
2	10,380	75.00	10.9	Upper Marker

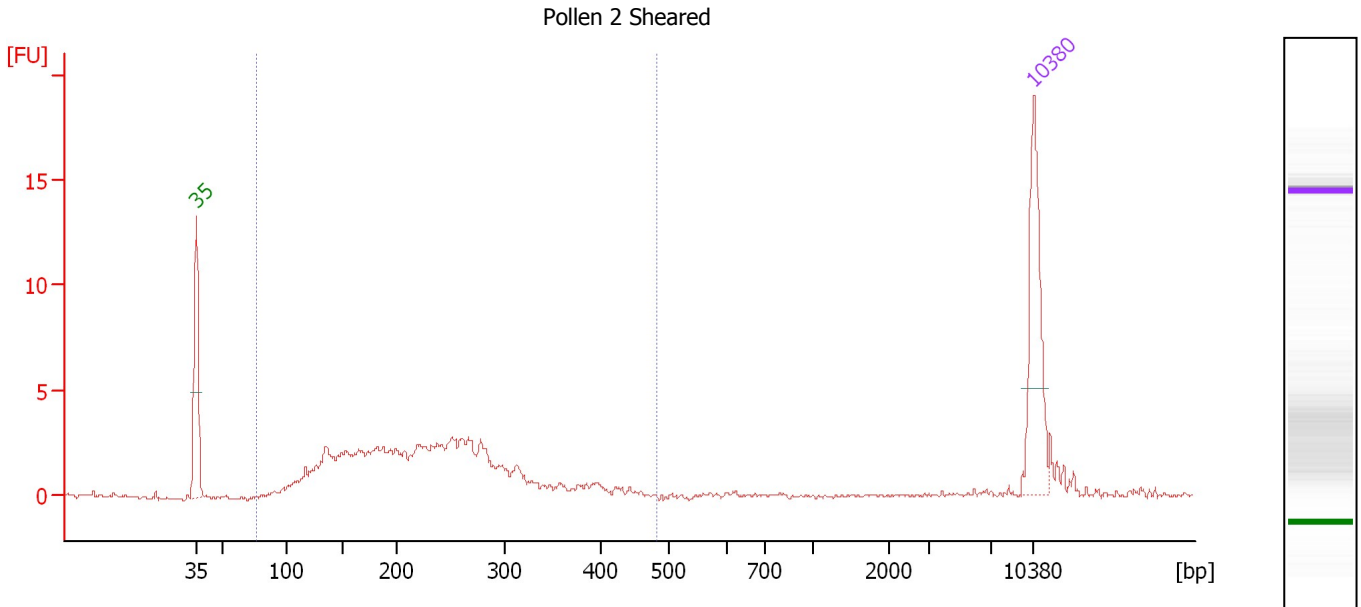
Region table for sample 8 : 2.5 V Sheared

From [bp]	To [bp]	Average Size [bp]	Molarity [pmol/l]	Conc. [pg/μl]	Corr. Area	% of Total	Size distribution in CV [%]	Color
75	432	217	3,087.0	384.03	59.9	87	30.4	Blue

Assay Class: High Sensitivity DNA Assay
 Data Path: C:\...ents and Settings\Bioanalyzer\2012-11-13\2012-11-13_001.xad

Created: 11/13/2012 10:12:14 AM
 Modified: 11/13/2012 10:54:47 AM

Electropherogram Summary Continued ...



Overall Results for sample 9 : Pollen 2 Sheared

Number of peaks found: 0 Corr. Area 1: 69.5
 Noise: 0.1

Peak table for sample 9 : Pollen 2 Sheared

Peak	Size [bp]	Conc. [pg/μl]	Molarity [pmol/l]	Observations
1	35	125.00	5,411.3	Lower Marker
2	10,380	75.00	10.9	Upper Marker

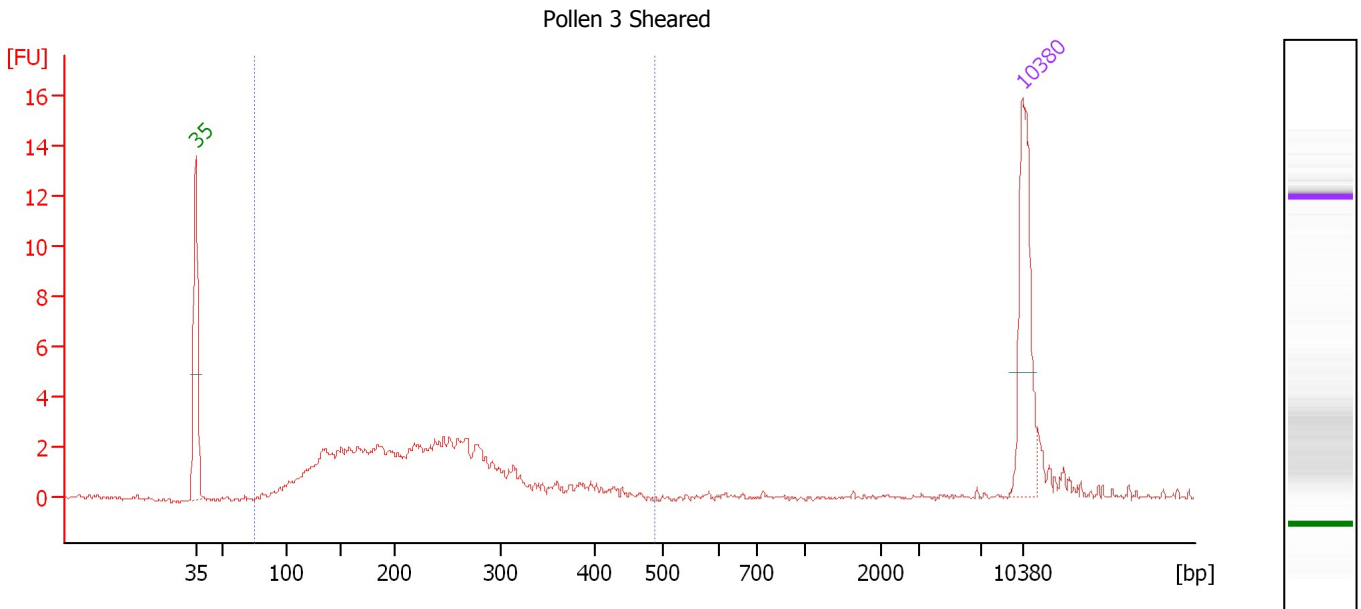
Region table for sample 9 : Pollen 2 Sheared

From [bp]	To [bp]	Average Size [bp]	Molarity [pmol/l]	Conc. [pg/μl]	Corr. Area	% of Total	Size distribution in CV [%]	Color
76	481	227	3,999.3	515.07	69.5	95	31.4	Blue

Assay Class: High Sensitivity DNA Assay
 Data Path: C:\...ents and Settings\Bioanalyzer\2012-11-13\2012-11-13_001.xad

Created: 11/13/2012 10:12:14 AM
 Modified: 11/13/2012 10:54:47 AM

Electropherogram Summary Continued ...



Overall Results for sample 10 : Pollen 3 Sheared

Number of peaks found: 0 Corr. Area 1: 62.4
 Noise: 0.1

Peak table for sample 10 : Pollen 3 Sheared

Peak	Size [bp]	Conc. [pg/μl]	Molarity [pmol/l]	Observations
1	35	125.00	5,411.3	Lower Marker
2	10,380	75.00	10.9	Upper Marker

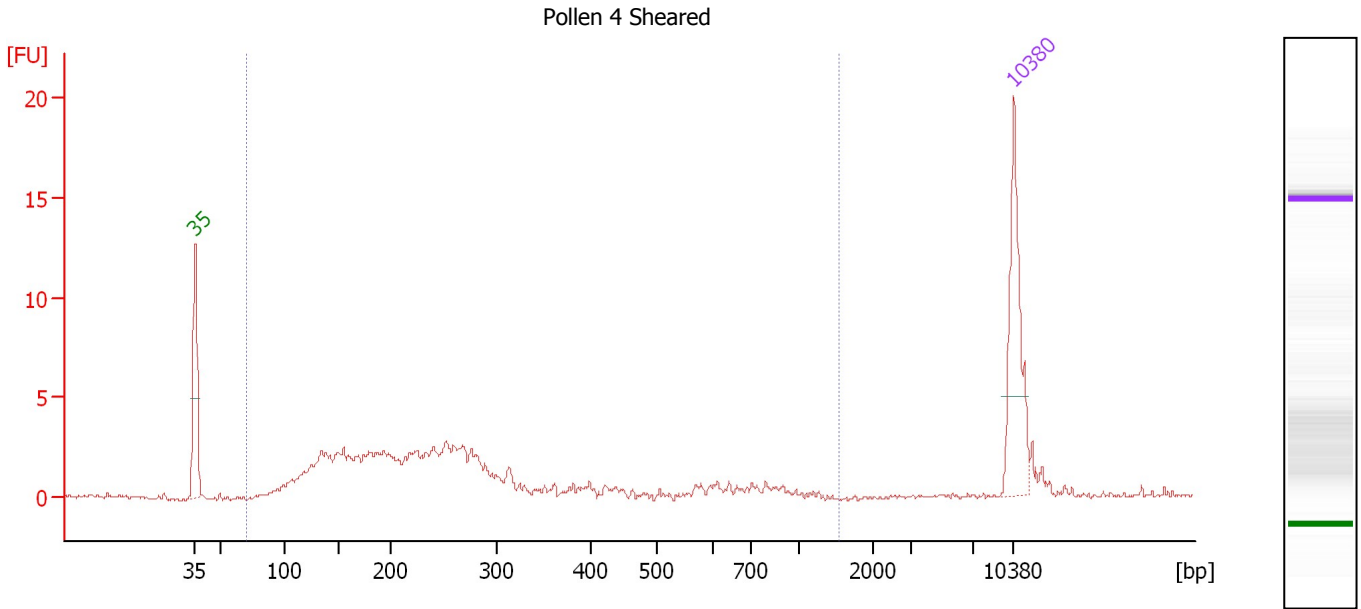
Region table for sample 10 : Pollen 3 Sheared

From [bp]	To [bp]	Average Size [bp]	Molarity [pmol/l]	Conc. [pg/μl]	Corr. Area	% of Total	Size distribution in CV [%]	Color
75	487	226	3,896.2	494.93	62.4	94	32.5	Blue

Assay Class: High Sensitivity DNA Assay
 Data Path: C:\...ents and Settings\Bioanalyzer\2012-11-13\2012-11-13_001.xad

Created: 11/13/2012 10:12:14 AM
 Modified: 11/13/2012 10:54:47 AM

Electropherogram Summary Continued ...



Overall Results for sample 11 : Pollen 4 Sheared

Number of peaks found: 0 Corr. Area 1: 71.2
 Noise: 0.1

Peak table for sample 11 : Pollen 4 Sheared

Peak	Size [bp]	Conc. [pg/μl]	Molarity [pmol/l]	Observations
1	35	125.00	5,411.3	Lower Marker
2	10,380	75.00	10.9	Upper Marker

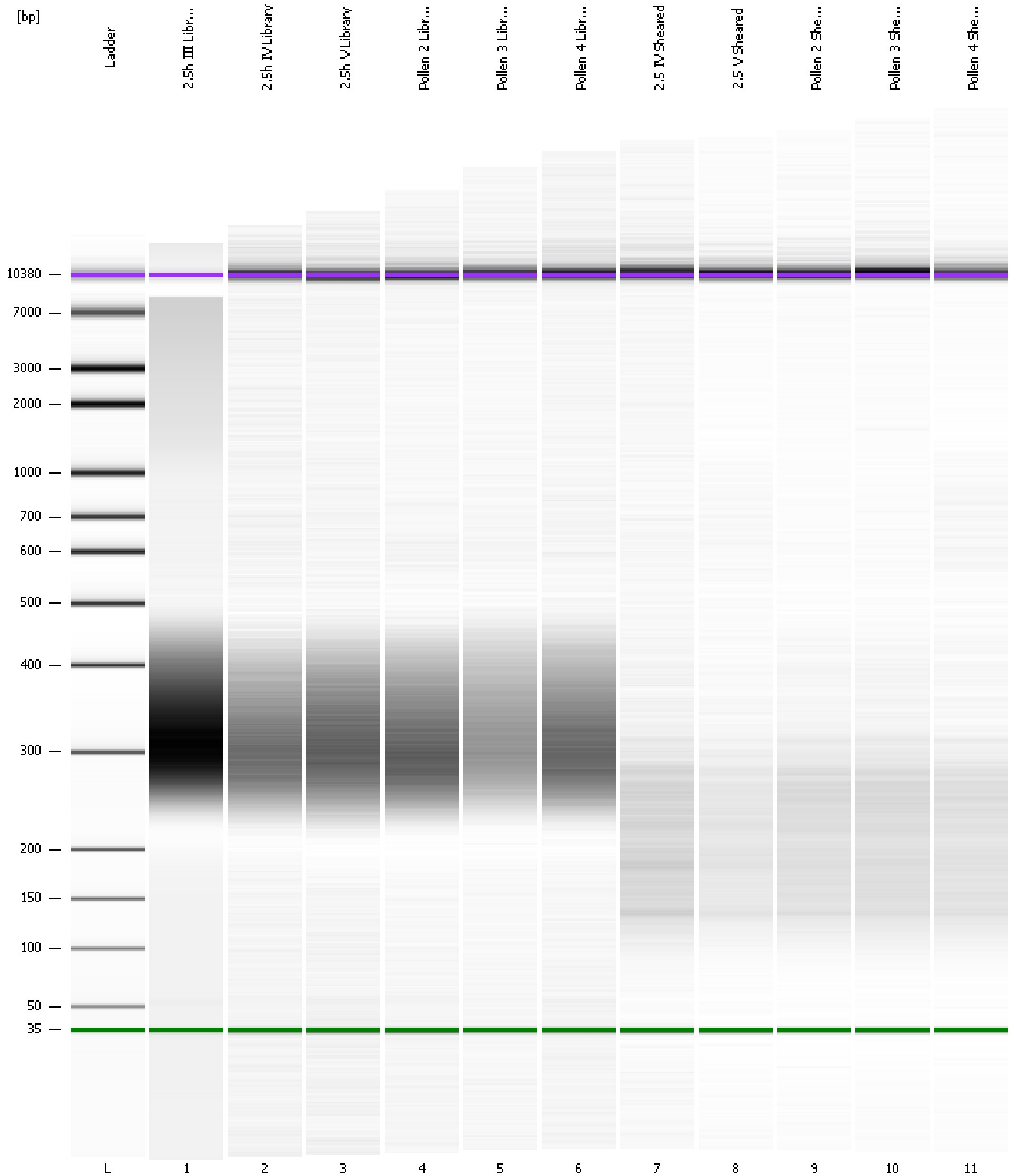
Region table for sample 11 : Pollen 4 Sheared

From [bp]	To [bp]	Average Size [bp]	Molarity [pmol/l]	Conc. [pg/μl]	Corr. Area	% of Total	Size distribution in CV [%]	Color
70	1,547	263	4,012.2	516.11	71.2	96	60.9	Blue

Assay Class: High Sensitivity DNA Assay
Data Path: C:\...ents and Settings\Bioanalyzer\2012-11-13\2012-11-13_001.xad

Created: 11/13/2012 10:12:14 AM
Modified: 11/13/2012 10:54:47 AM

Gel Image



Assay Class: High Sensitivity DNA Assay
 Data Path: C:\...ents and Settings\Bioanalyzer\2012-11-13\2012-11-13_001.xad

Created: 11/13/2012 10:12:14 AM
 Modified: 11/13/2012 10:54:47 AM

Run Logbook

Description	Number	Source	Category	Sub Category	Time	Time Zone	User	Host
Run ended on port 1 (Number of wells acquired: 12)		Instrument	Run		11/13/2012 10:53:32 AM	(GMT --08:00) Pacific Standard Time	UC Davis	D8XSMGH1
Run started on port 1 (File: C:\Documents and Settings\Bioanalyzer\2012-11-13\2012-11-13_001.xad)		Instrument	Run		11/13/2012 10:12:19 AM	(GMT --08:00) Pacific Standard Time	UC Davis	D8XSMGH1
Product Number : G2938B		Instrument	Run		11/13/2012 10:12:19 AM	(GMT --08:00) Pacific Standard Time	UC Davis	D8XSMGH1
Name :		Instrument	Run		11/13/2012 10:12:19 AM	(GMT --08:00) Pacific Standard Time	UC Davis	D8XSMGH1
Vendor : Agilent Technologies		Instrument	Run		11/13/2012 10:12:19 AM	(GMT --08:00) Pacific Standard Time	UC Davis	D8XSMGH1
Serial# : DE13701086		Instrument	Run		11/13/2012 10:12:19 AM	(GMT --08:00) Pacific Standard Time	UC Davis	D8XSMGH1
Firmware : C.01.069		Instrument	Run		11/13/2012 10:12:19 AM	(GMT --08:00) Pacific Standard Time	UC Davis	D8XSMGH1
Cartridge : Electrode		Instrument	Run		11/13/2012 10:12:19 AM	(GMT --08:00) Pacific Standard Time	UC Davis	D8XSMGH1