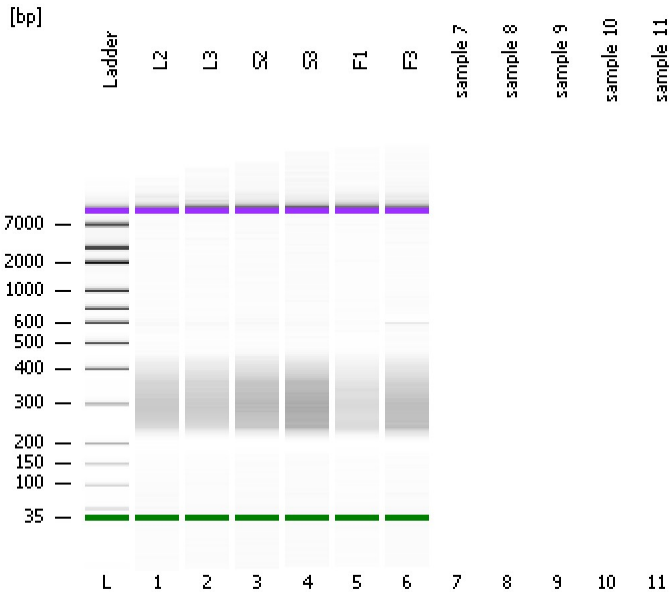


Assay Class: High Sensitivity DNA Assay
Data Path: C:\...ents and Settings\Bioanalyzer\2012-11-13\2012-11-13_002.xad

Created: 11/13/2012 11:19:40 AM
Modified: 11/13/2012 11:48:25 AM

Electrophoresis File Run Summary



Instrument Information:

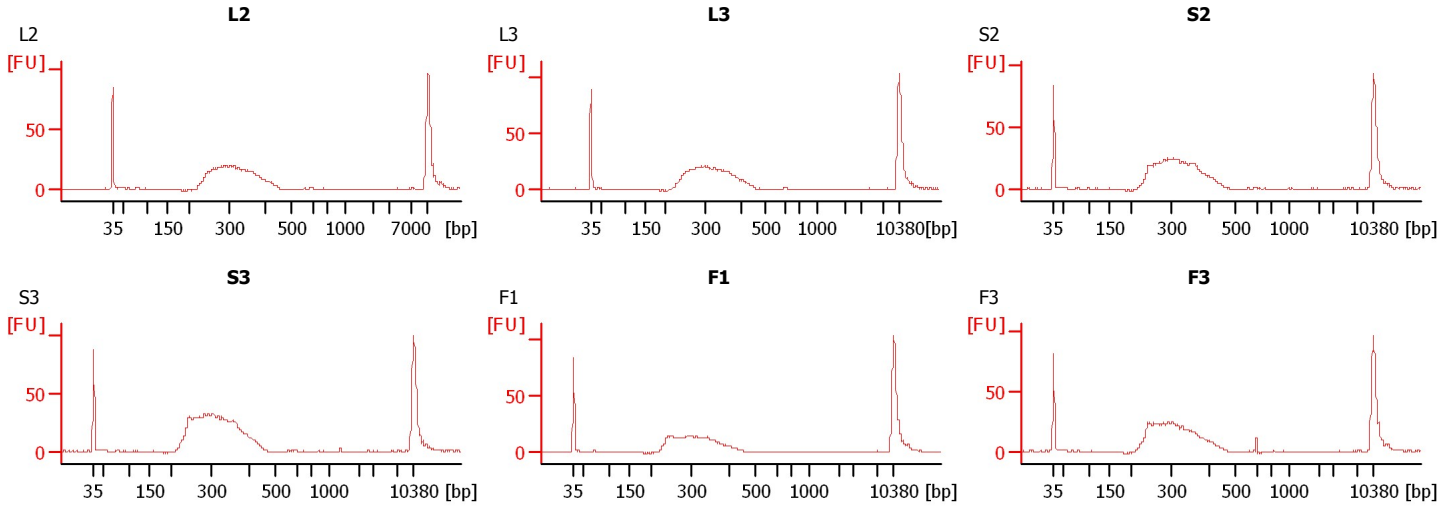
Instrument Name: DE13701086 Firmware: C.01.069
Serial#: DE13701086 Type: G2938B

Assay Information:

Assay Origin Path: C:\Program Files\Agilent\2100 bioanalyzer\2100 expert\assays\dsDNA\High Sensitivity DNA.xsy
Assay Class: High Sensitivity DNA Assay
Version: 1.03
Assay Comments: Copyright © 2003-2010 Agilent Technologies

Chip Information:

Chip Lot #: Reagent Kit Lot #: Chip Comments:



Assay Class: High Sensitivity DNA Assay
 Data Path: C:\...ents and Settings\Bioanalyzer\2012-11-13\2012-11-13_002.xad

Created: 11/13/2012 11:19:40 AM
 Modified: 11/13/2012 11:48:25 AM

Electrophoresis File Run Summary (Chip Summary)

Sample Name	Sample Comment	Rest. Digest	Status	Observation	Result Label	Result Color
L2	L2	<input type="checkbox"/>	✓			
L3	L3	<input type="checkbox"/>	✓			
S2	S2	<input type="checkbox"/>	✓			
S3	S3	<input type="checkbox"/>	✓			
F1	F1	<input type="checkbox"/>	✓			
F3	F3	<input type="checkbox"/>	✓			
sample 7		<input type="checkbox"/>				
sample 8		<input type="checkbox"/>				
sample 9		<input type="checkbox"/>				
sample 10		<input type="checkbox"/>				
sample 11		<input type="checkbox"/>				
Ladder		<input type="checkbox"/>	✓			

Chip Lot #

Reagent Kit Lot #

Chip Comments :

Assay Class: High Sensitivity DNA Assay
Data Path: C:\...ents and Settings\Bioanalyzer\2012-11-13\2012-11-13_002.xad

Created: 11/13/2012 11:19:40 AM
Modified: 11/13/2012 11:48:25 AM

Electrophoresis Assay Details

General Analysis Settings

Number of Available Sample and Ladder Wells (Max.) : 12
Minimum Visible Range [s] : 32
Maximum Visible Range [s] : 138
Start Analysis Time Range [s] : 33
End Analysis Time Range [s] : 137.5
Ladder Concentration [pg/μl] : 1950
Uses Standard Area for Ladder Fragments
Lower Marker Concentration [pg/μl] : 125
Upper Marker Concentration [pg/μl] : 75
Used Upper Marker for Quantitation
Standard Curve Fit is Point to Point
Show Data Aligned to Lower and Upper Marker

Integrator Settings

Integration Start Time [s] : 33.05
Integration End Time [s] : 137
Slope Threshold : 0.8
Height Threshold [FU] : 5
Area Threshold : 0.1
Width Threshold [s] : 0.6
Baseline Plateau [s] : 0.5

Filter Settings

Filter Width [s] : 0.5
Polynomial Order : 4

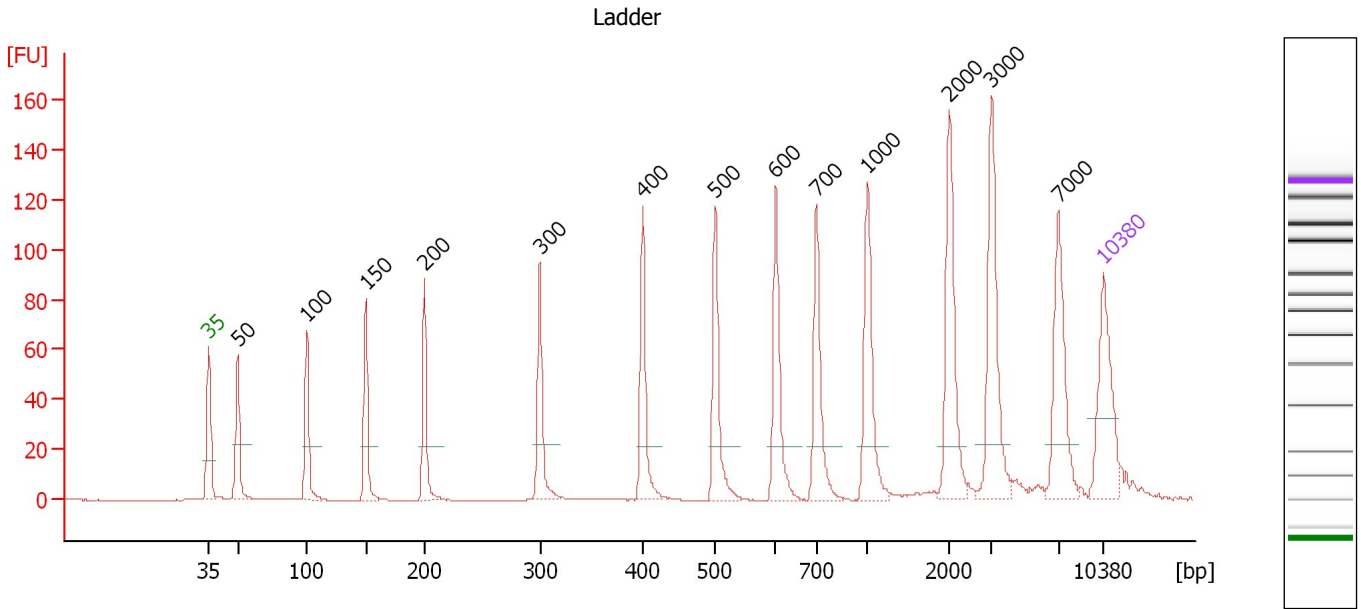
Ladder

Ladder Peak	Size	Area
1	35	160
2	50	210
3	100	208
4	150	221
5	200	242
6	300	270
7	400	305
8	500	306
9	600	336
10	700	321
11	1000	366
12	2000	413
13	3000	411
14	7000	400
15	10380	214

Assay Class: High Sensitivity DNA Assay
 Data Path: C:\...ents and Settings\Bioanalyzer\2012-11-13\2012-11-13_002.xad

Created: 11/13/2012 11:19:40 AM
 Modified: 11/13/2012 11:48:25 AM

Electropherogram Summary



Overall Results for Ladder

Noise: 0.1

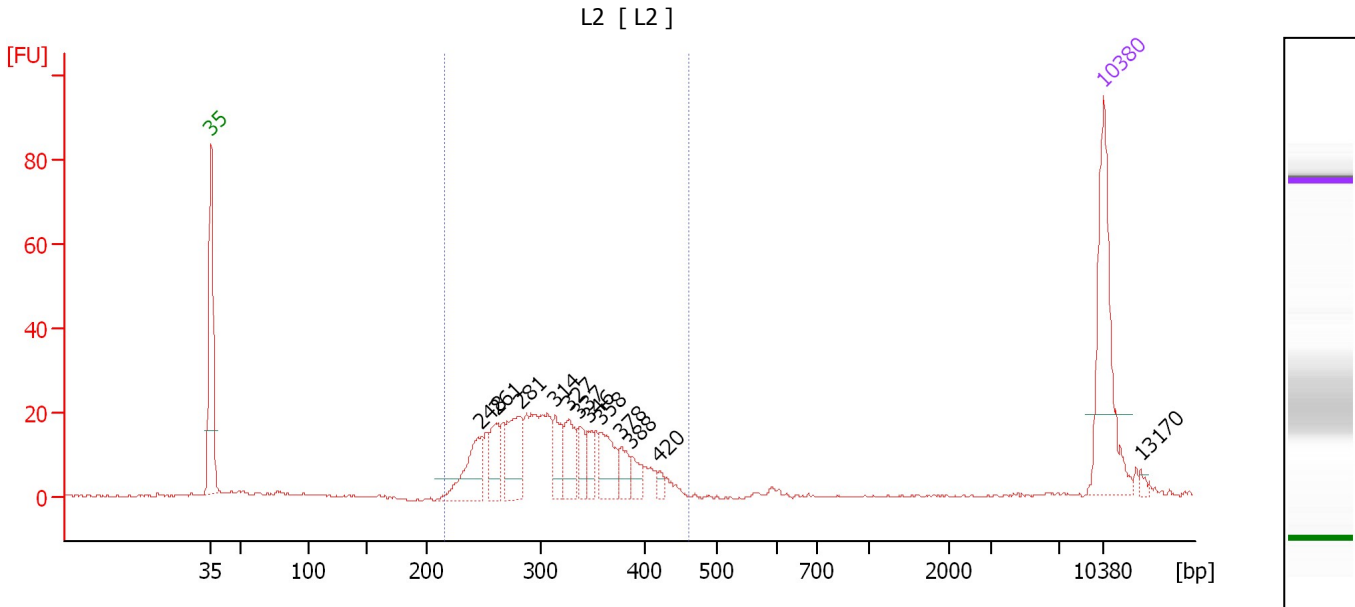
Peak table for Ladder

Peak	Size [bp]	Conc. [pg/μl]	Molarity [pmol/l]	Observations
1	35	125.00	5,411.3	Lower Marker
2	50	150.00	4,545.5	Ladder Peak
3	100	150.00	2,272.7	Ladder Peak
4	150	150.00	1,515.2	Ladder Peak
5	200	150.00	1,136.4	Ladder Peak
6	300	150.00	757.6	Ladder Peak
7	400	150.00	568.2	Ladder Peak
8	500	150.00	454.5	Ladder Peak
9	600	150.00	378.8	Ladder Peak
10	700	150.00	324.7	Ladder Peak
11	1,000	150.00	227.3	Ladder Peak
12	2,000	150.00	113.6	Ladder Peak
13	3,000	150.00	75.8	Ladder Peak
14	7,000	150.00	32.5	Ladder Peak
15	10,380	75.00	10.9	Upper Marker

Assay Class: High Sensitivity DNA Assay
 Data Path: C:\...ents and Settings\Bioanalyzer\2012-11-13\2012-11-13_002.xad

Created: 11/13/2012 11:19:40 AM
 Modified: 11/13/2012 11:48:25 AM

Electropherogram Summary Continued ...



Overall Results for sample 1 : L2

Number of peaks found: 12 Corr. Area 1: 345.8
 Noise: 0.3

Peak table for sample 1 : L2

Peak	Size [bp]	Conc. [pg/μl]	Molarity [pmol/l]	Observations
1	35	125.00	5,411.3	Lower Marker
2	248	50.92	311.1	
3	261	29.76	172.8	
4	281	52.28	281.6	
5	314	28.99	140.0	
6	327	30.86	142.9	
7	337	17.64	79.3	
8	346	15.49	67.8	
9	358	33.70	142.7	
10	378	15.82	63.4	
11	388	12.26	47.9	
12	420	5.36	19.3	
13	10,380	75.00	10.9	Upper Marker
14	13,170	0.00	0.0	

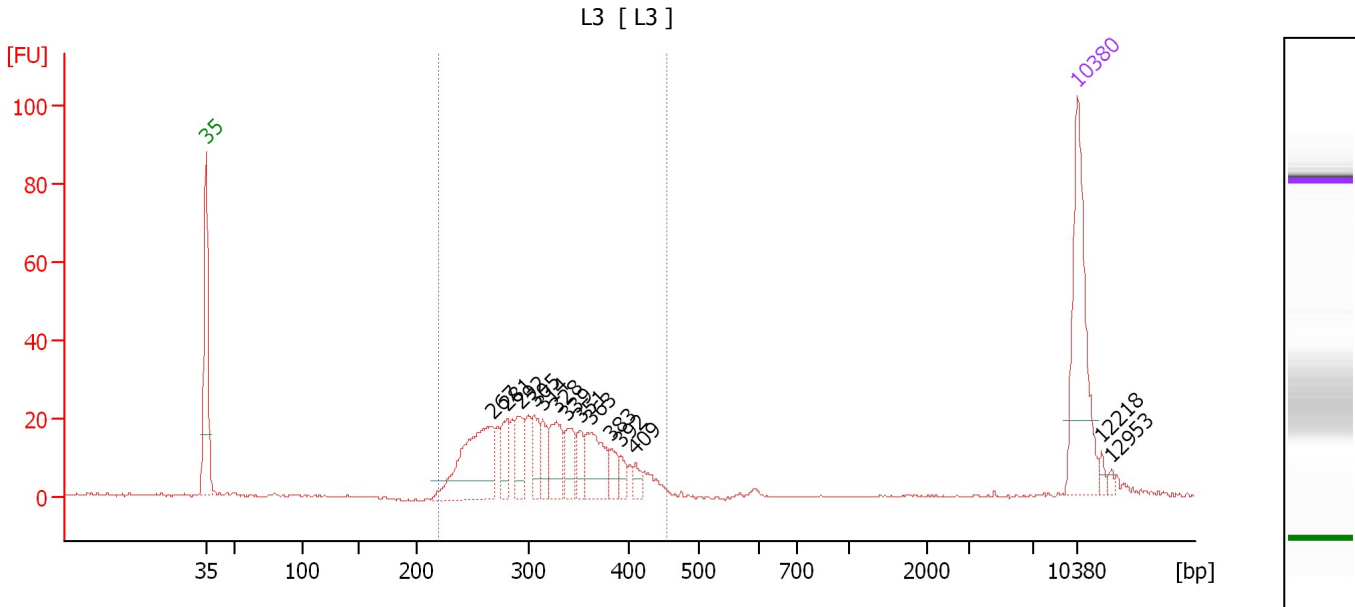
Region table for sample 1 : L2

From [bp]	To [bp]	Average Size [bp]	Molarity [pmol/l]	Conc. [pg/μl]	Corr. Area	% of Total	Size distribution in CV [%]	Color
216	461	314	2,002.6	401.99	345.8	95	15.9	Blue

Assay Class: High Sensitivity DNA Assay
 Data Path: C:\...ents and Settings\Bioanalyzer\2012-11-13\2012-11-13_002.xad

Created: 11/13/2012 11:19:40 AM
 Modified: 11/13/2012 11:48:25 AM

Electropherogram Summary Continued ...



Overall Results for sample 2 : L3

Number of peaks found: 14 Corr. Area 1: 358.9
 Noise: 0.2

Peak table for sample 2 : L3

Peak	Size [bp]	Conc. [pg/μl]	Molarity [pmol/l]	Observations
1	35	125.00	5,411.3	Lower Marker
2	267	104.47	591.8	
3	281	25.32	136.6	
4	292	25.88	134.3	
5	305	23.24	115.3	
6	314	19.88	95.9	
7	328	32.66	151.0	
8	339	24.10	107.7	
9	351	16.05	69.2	
10	363	41.55	173.5	
11	383	13.41	53.1	
12	392	8.49	32.8	
13	409	8.00	29.6	
14	10,380	75.00	10.9	Upper Marker
15	12,218	0.00	0.0	
16	12,953	0.00	0.0	

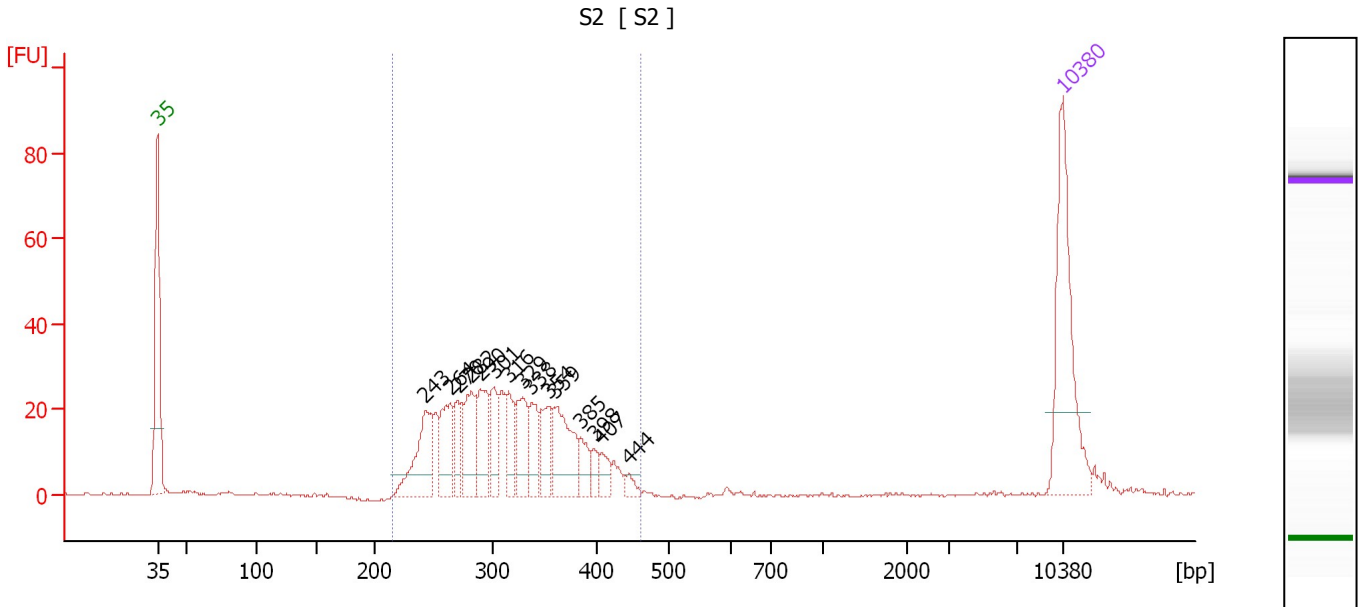
Region table for sample 2 : L3

From [bp]	To [bp]	Average Size [bp]	Molarity [pmol/l]	Conc. [pg/μl]	Corr. Area	% of Total	Size distribution in CV [%]	Color
219	455	317	1,892.1	382.21	358.9	95	16.1	Blue

Assay Class: High Sensitivity DNA Assay
 Data Path: C:\...ents and Settings\Bioanalyzer\2012-11-13\2012-11-13_002.xad

Created: 11/13/2012 11:19:40 AM
 Modified: 11/13/2012 11:48:25 AM

Electropherogram Summary Continued ...



Overall Results for sample 3 : S2

Number of peaks found: 15 Corr. Area 1: 450.9
 Noise: 0.3

Peak table for sample 3 : S2

Peak	Size [bp]	Conc. [pg/μl]	Molarity [pmol/l]	Observations
1	35	125.00	5,411.3	Lower Marker
2	243	57.39	358.5	
3	264	41.44	237.7	
4	270	22.34	125.1	
5	282	41.16	221.1	
6	290	40.37	211.2	
7	301	27.00	135.7	
8	316	26.05	124.9	
9	329	34.82	160.1	
10	338	25.23	113.2	
11	354	27.69	118.4	
12	359	49.05	206.9	
13	385	15.52	61.1	
14	398	9.16	34.9	
15	407	11.02	41.0	
16	444	5.97	20.4	
17	10,380	75.00	10.9	Upper Marker

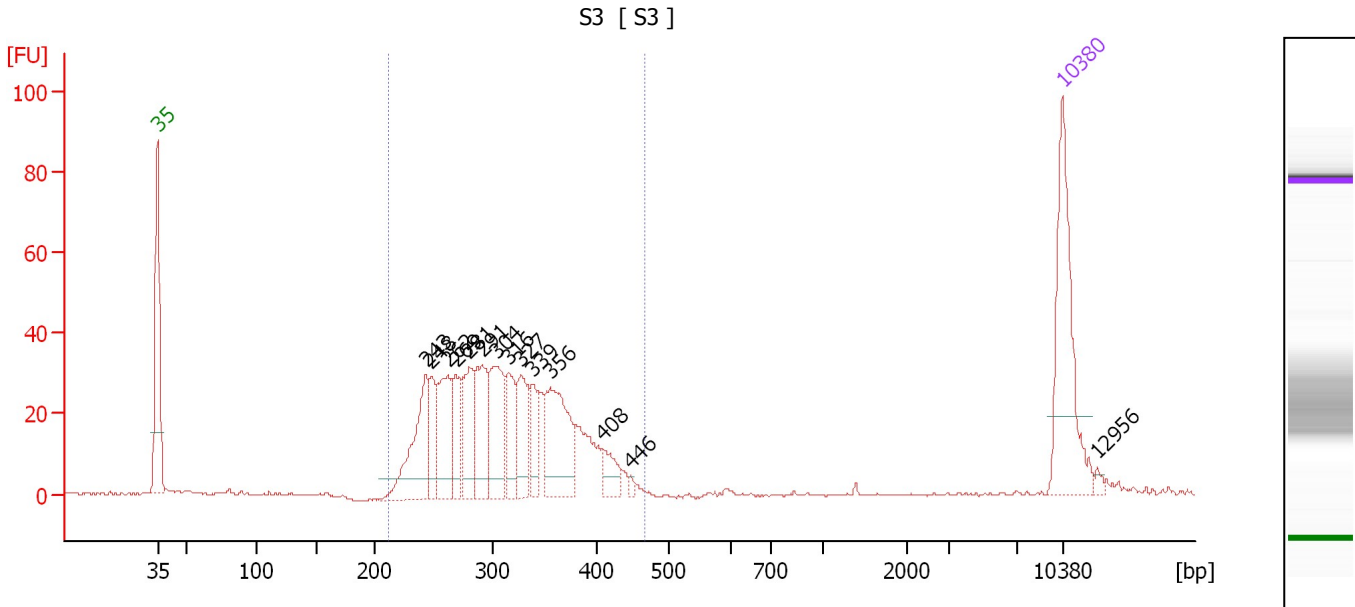
Region table for sample 3 : S2

From [bp]	To [bp]	Average Size [bp]	Molarity [pmol/l]	Conc. [pg/μl]	Corr. Area	% of Total	Size distribution in CV [%]	Color
216	461	317	2,394.2	482.66	450.9	97	16.4	Blue

Assay Class: High Sensitivity DNA Assay
 Data Path: C:\...ents and Settings\Bioanalyzer\2012-11-13\2012-11-13_002.xad

Created: 11/13/2012 11:19:40 AM
 Modified: 11/13/2012 11:48:25 AM

Electropherogram Summary Continued ...



Overall Results for sample 4 : S3

Number of peaks found: 14 Corr. Area 1: 601.2
 Noise: 0.2

Peak table for sample 4 : S3

Peak	Size [bp]	Conc. [pg/μl]	Molarity [pmol/l]	Observations
1	35	125.00	5,411.3	Lower Marker
2	243	78.11	486.3	
3	248	30.47	186.4	
4	262	56.80	328.5	
5	269	29.36	165.5	
6	281	47.99	259.2	
7	291	57.12	297.1	
8	304	61.45	306.3	
9	316	36.01	172.6	
10	327	37.78	175.0	
11	339	22.38	100.0	
12	356	76.35	325.2	
13	408	17.89	66.4	
14	446	2.97	10.1	
15	10,380	75.00	10.9	Upper Marker
16	12,956	0.00	0.0	

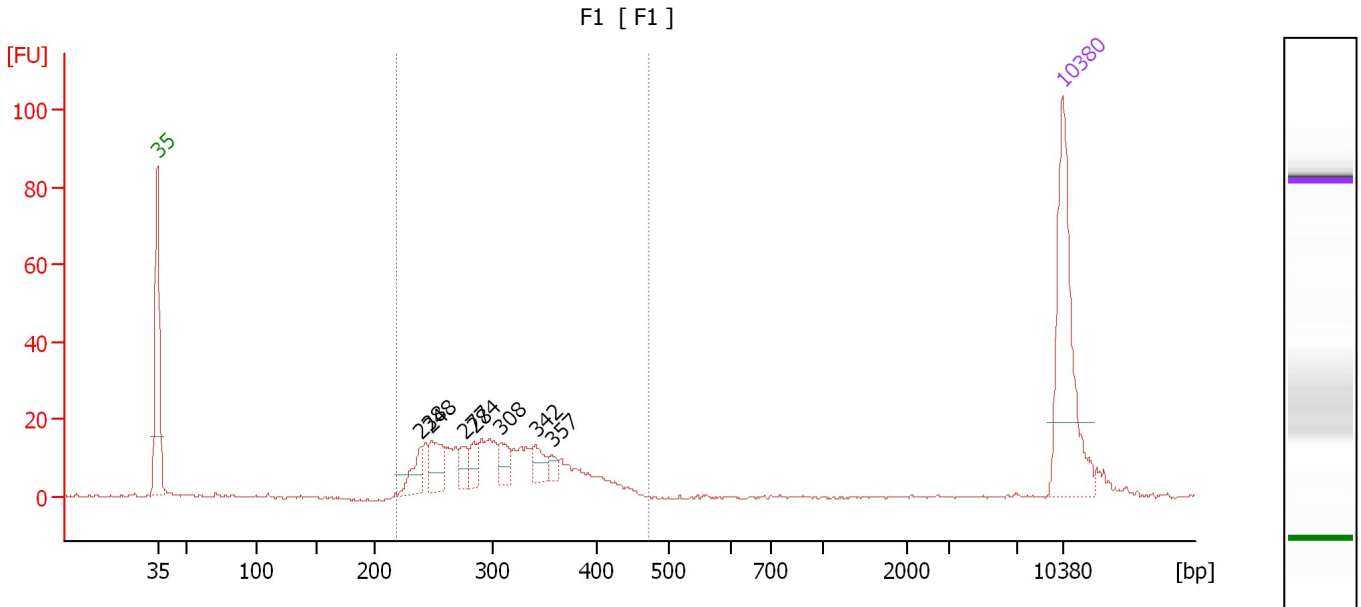
Region table for sample 4 : S3

From [bp]	To [bp]	Average Size [bp]	Molarity [pmol/l]	Conc. [pg/μl]	Corr. Area	% of Total	Size distribution in CV [%]	Color
211	467	312	3,062.6	608.64	601.2	97	16.8	Blue

Assay Class: High Sensitivity DNA Assay
 Data Path: C:\...ents and Settings\Bioanalyzer\2012-11-13\2012-11-13_002.xad

Created: 11/13/2012 11:19:40 AM
 Modified: 11/13/2012 11:48:25 AM

Electropherogram Summary Continued ...



Overall Results for sample 5 : F1

Number of peaks found: 7 Corr. Area 1: 264.0
 Noise: 0.2

Peak table for sample 5 : F1

Peak	Size [bp]	Conc. [pg/μl]	Molarity [pmol/l]	Observations
1	35	125.00	5,411.3	Lower Marker
2	238	19.91	126.7	
3	248	27.38	167.3	
4	277	12.22	66.9	
5	284	11.95	63.7	
6	308	14.96	73.7	
7	342	13.00	57.6	
8	357	5.60	23.8	
9	10,380	75.00	10.9	Upper Marker

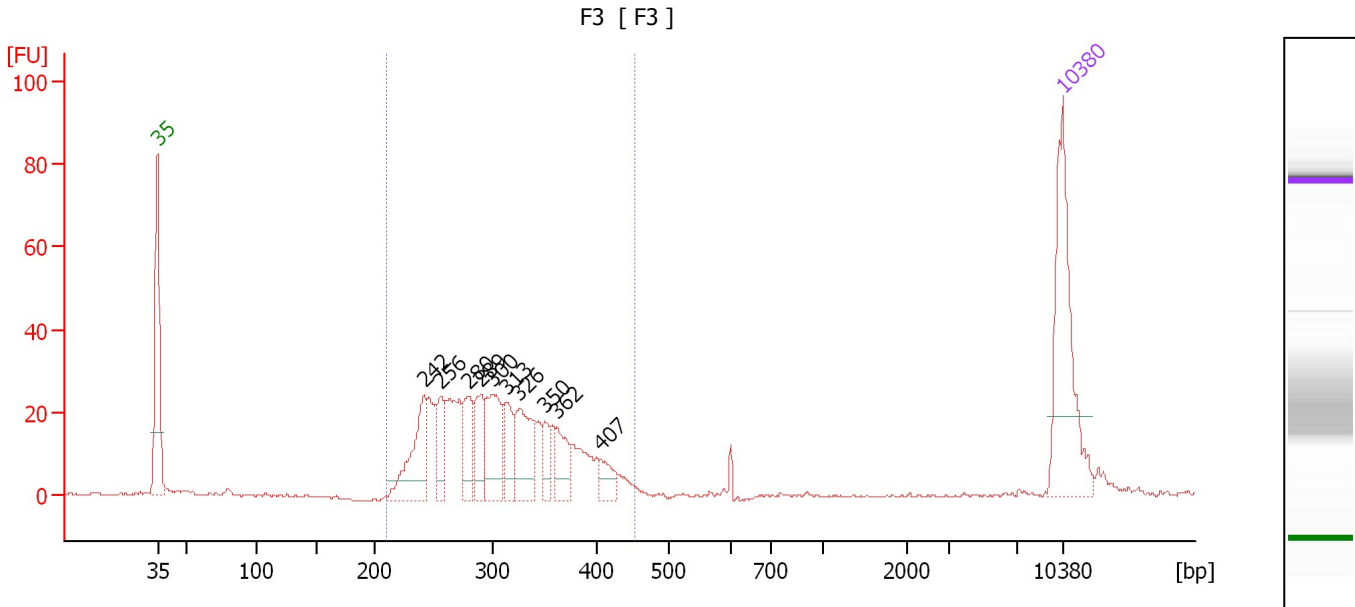
Region table for sample 5 : F1

From [bp]	To [bp]	Average Size [bp]	Molarity [pmol/l]	Conc. [pg/μl]	Corr. Area	% of Total	Size distribution in CV [%]	Color
218	471	310	1,303.1	257.17	264.0	95	16.8	Blue

Assay Class: High Sensitivity DNA Assay
 Data Path: C:\...ents and Settings\Bioanalyzer\2012-11-13\2012-11-13_002.xad

Created: 11/13/2012 11:19:40 AM
 Modified: 11/13/2012 11:48:25 AM

Electropherogram Summary Continued ...



Overall Results for sample 6 : F3

Number of peaks found: 10 Corr. Area 1: 450.4
 Noise: 0.2

Peak table for sample 6 : F3

Peak	Size [bp]	Conc. [pg/μl]	Molarity [pmol/l]	Observations
1	35	125.00	5,411.3	Lower Marker
2	242	58.58	367.2	
3	256	28.73	169.9	
4	280	34.59	187.5	
5	289	32.52	170.2	
6	300	56.00	282.9	
7	313	26.06	126.0	
8	326	47.58	221.0	
9	350	16.18	70.0	
10	362	24.62	103.0	
11	407	14.43	53.7	
12	10,380	75.00	10.9	Upper Marker

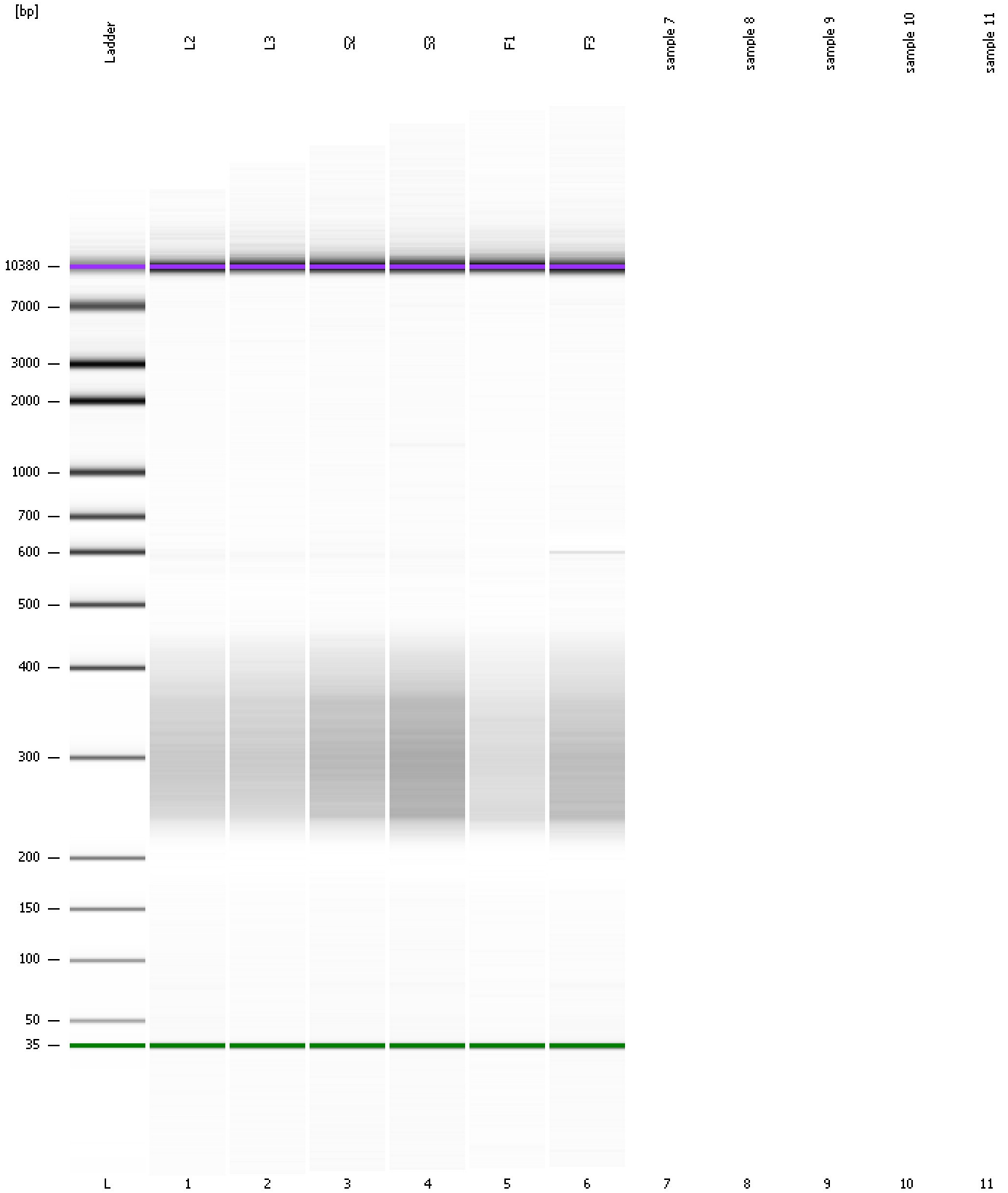
Region table for sample 6 : F3

From [bp]	To [bp]	Average Size [bp]	Molarity [pmol/l]	Conc. [pg/μl]	Corr. Area	% of Total	Size distribution in CV [%]	Color
210	454	308	2,348.0	460.63	450.4	93	17.1	Blue

Assay Class: High Sensitivity DNA Assay
Data Path: C:\...ents and Settings\Bioanalyzer\2012-11-13\2012-11-13_002.xad

Created: 11/13/2012 11:19:40 AM
Modified: 11/13/2012 11:48:25 AM

Gel Image



Assay Class: High Sensitivity DNA Assay
Data Path: C:\...ents and Settings\Bioanalyzer\2012-11-13\2012-11-13_002.xad

Created: 11/13/2012 11:19:40 AM
Modified: 11/13/2012 11:48:25 AM

Invalid Samples

Sample 7 has not been run, no results available.

Sample 8 has not been run, no results available.

Sample 9 has not been run, no results available.

Sample 10 has not been run, no results available.

Sample 11 has not been run, no results available.

Assay Class: High Sensitivity DNA Assay
 Data Path: C:\...ents and Settings\Bioanalyzer\2012-11-13\2012-11-13_002.xad

Created: 11/13/2012 11:19:40 AM
 Modified: 11/13/2012 11:48:25 AM

Run Logbook

Description	Number	Source	Category	Sub Category	Time	Time Zone	User	Host
Run ended on port 1 (Number of wells acquired: 7)		Instrument	Run		11/13/2012 11:46:40 AM	(GMT --08:00) Pacific Standard Time	UC Davis	D8XSMGH1
Run started on port 1 (File: C:\Documents and Settings\Bioanalyzer\2012-11-13\2012-11-13_002.xad)		Instrument	Run		11/13/2012 11:19:45 AM	(GMT --08:00) Pacific Standard Time	UC Davis	D8XSMGH1
Product Number : G2938B		Instrument	Run		11/13/2012 11:19:45 AM	(GMT --08:00) Pacific Standard Time	UC Davis	D8XSMGH1
Name :		Instrument	Run		11/13/2012 11:19:45 AM	(GMT --08:00) Pacific Standard Time	UC Davis	D8XSMGH1
Vendor : Agilent Technologies		Instrument	Run		11/13/2012 11:19:45 AM	(GMT --08:00) Pacific Standard Time	UC Davis	D8XSMGH1
Serial# : DE13701086		Instrument	Run		11/13/2012 11:19:45 AM	(GMT --08:00) Pacific Standard Time	UC Davis	D8XSMGH1
Firmware : C.01.069		Instrument	Run		11/13/2012 11:19:45 AM	(GMT --08:00) Pacific Standard Time	UC Davis	D8XSMGH1
Cartridge : Electrode		Instrument	Run		11/13/2012 11:19:45 AM	(GMT --08:00) Pacific Standard Time	UC Davis	D8XSMGH1