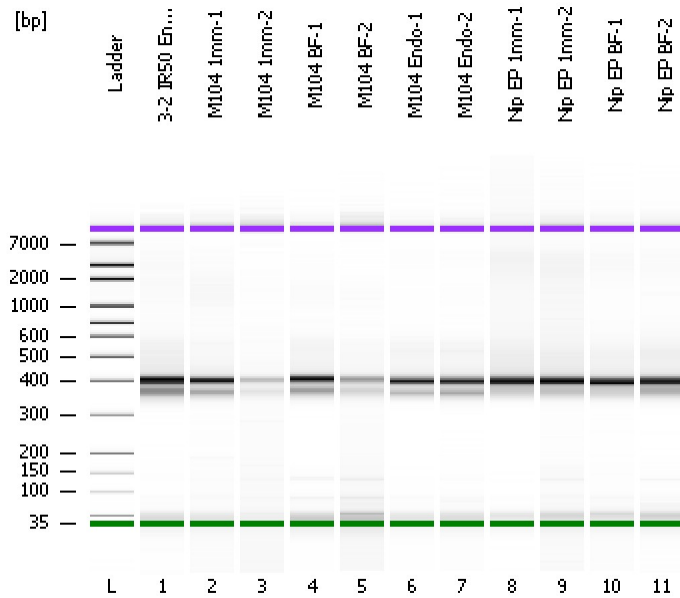


Assay Class: High Sensitivity DNA Assay  
Data Path: C:\...ents and Settings\Bioanalyzer\2012-11-13\2012-11-13\_005.xad

Created: 11/13/2012 2:01:05 PM  
Modified: 11/13/2012 2:43:03 PM

Electrophoresis File Run Summary



Instrument Information:

Instrument Name: DE13701086      Firmware: C.01.069  
Serial#: DE13701086      Type: G2938B

Assay Information:

Assay Origin Path: C:\Program Files\Agilent\2100 bioanalyzer\2100 expert\assays\dsDNA\High Sensitivity DNA.xsy  
Assay Class: High Sensitivity DNA Assay  
Version: 1.03  
Assay Comments: Copyright © 2003-2010 Agilent Technologies

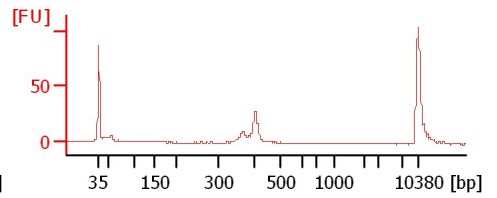
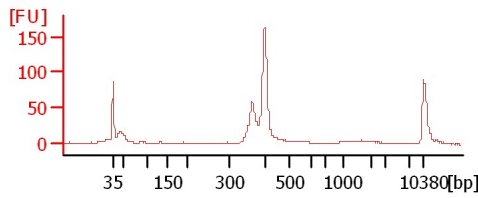
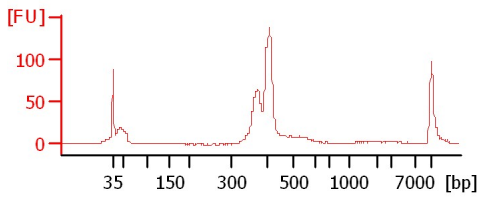
Chip Information:

Chip Lot #:  
Reagent Kit Lot #:  
Chip Comments:

3-2 IR50 Endo-2

M104 1mm-1

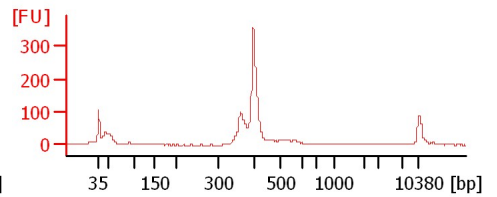
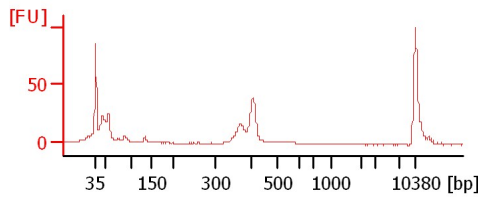
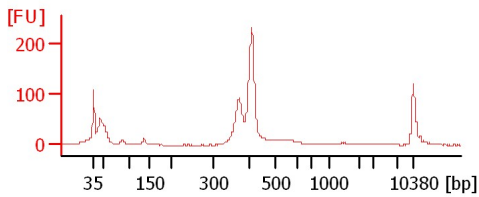
M104 1mm-2



M104 BF-1

M104 BF-2

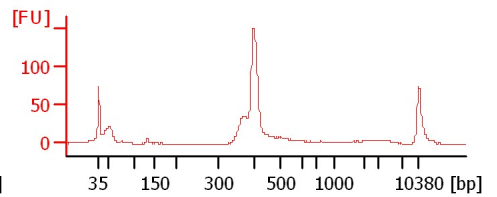
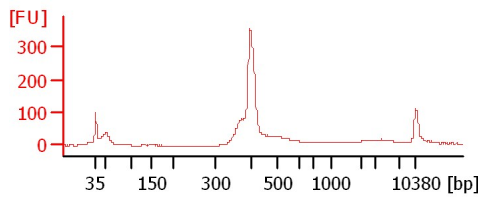
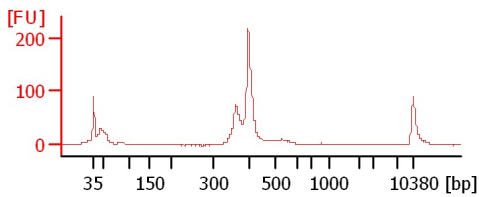
M104 Endo-1



M104 Endo-2

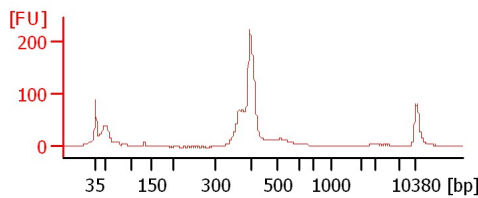
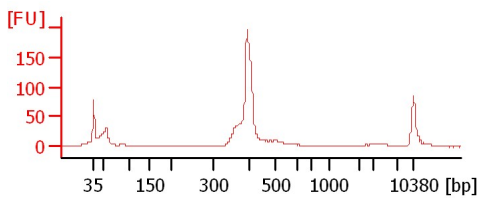
Nip EP 1mm-1

Nip EP 1mm-2



Nip EP BF-1

Nip EP BF-2



Assay Class: High Sensitivity DNA Assay  
Data Path: C:\...ents and Settings\Bioanalyzer\2012-11-13\2012-11-13\_005.xad

Created: 11/13/2012 2:01:05 PM  
Modified: 11/13/2012 2:43:03 PM

**Electrophoresis File Run Summary (Chip Summary)**

Sample Name	Sample Comment	Rest. Digest	Status	Observation	Result Label	Result Color
3-2 IR50 Endo-2		<input type="checkbox"/>	✓			
M104 1mm-1		<input type="checkbox"/>	✓			
M104 1mm-2		<input type="checkbox"/>	✓			
M104 BF-1		<input type="checkbox"/>	✓			
M104 BF-2		<input type="checkbox"/>	✓			
M104 Endo-1		<input type="checkbox"/>	✓			
M104 Endo-2		<input type="checkbox"/>	✓			
Nip EP 1mm-1		<input type="checkbox"/>	✓			
Nip EP 1mm-2		<input type="checkbox"/>	✓			
Nip EP BF-1		<input type="checkbox"/>	✓			
Nip EP BF-2		<input type="checkbox"/>	✓			
Ladder		<input type="checkbox"/>	✓			

**Chip Lot #**

**Reagent Kit Lot #**

**Chip Comments :**

Assay Class: High Sensitivity DNA Assay  
Data Path: C:\...ents and Settings\Bioanalyzer\2012-11-13\2012-11-13\_005.xad

Created: 11/13/2012 2:01:05 PM  
Modified: 11/13/2012 2:43:03 PM

**Electrophoresis Assay Details**

**General Analysis Settings**

Number of Available Sample and Ladder Wells (Max.) : 12  
Minimum Visible Range [s] : 32  
Maximum Visible Range [s] : 138  
Start Analysis Time Range [s] : 33  
End Analysis Time Range [s] : 137.5  
Ladder Concentration [pg/μl] : 1950  
Uses Standard Area for Ladder Fragments  
Lower Marker Concentration [pg/μl] : 125  
Upper Marker Concentration [pg/μl] : 75  
Used Upper Marker for Quantitation  
Standard Curve Fit is Point to Point  
Show Data Aligned to Lower and Upper Marker

**Integrator Settings**

Integration Start Time [s] : 33.05  
Integration End Time [s] : 137  
Slope Threshold : 0.8  
Height Threshold [FU] : 5  
Area Threshold : 0.1  
Width Threshold [s] : 0.6  
Baseline Plateau [s] : 0.5

**Filter Settings**

Filter Width [s] : 0.5  
Polynomial Order : 4

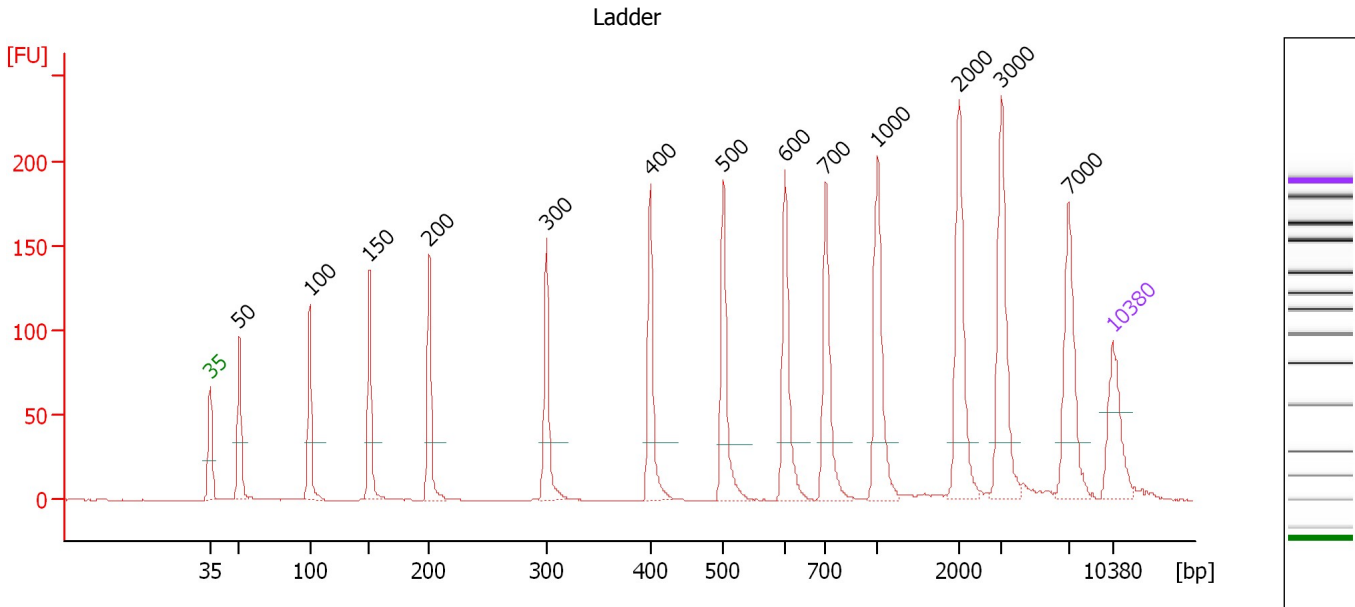
**Ladder**

Ladder Peak	Size	Area
1	35	160
2	50	210
3	100	208
4	150	221
5	200	242
6	300	270
7	400	305
8	500	306
9	600	336
10	700	321
11	1000	366
12	2000	413
13	3000	411
14	7000	400
15	10380	214

Assay Class: High Sensitivity DNA Assay  
 Data Path: C:\...ents and Settings\Bioanalyzer\2012-11-13\2012-11-13\_005.xad

Created: 11/13/2012 2:01:05 PM  
 Modified: 11/13/2012 2:43:03 PM

**Electropherogram Summary**



**Overall Results for Ladder**

Noise: 0.2

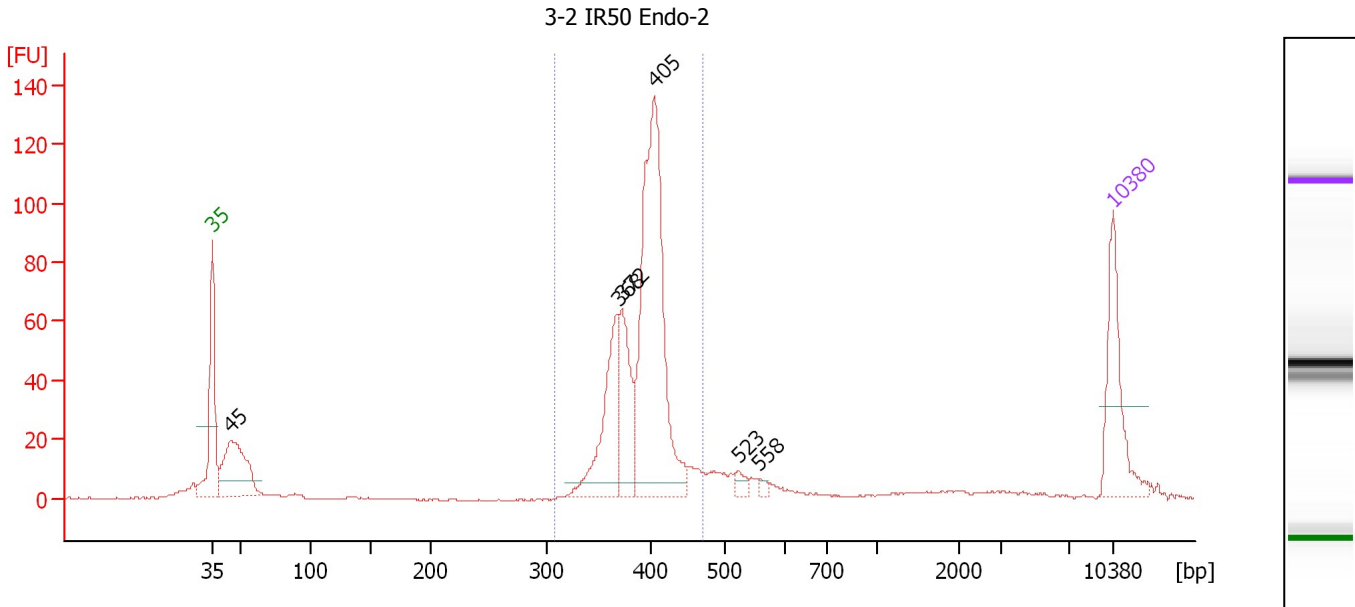
**Peak table for Ladder**

Peak	Size [bp]	Conc. [pg/μl]	Molarity [pmol/l]	Observations
1	35	125.00	5,411.3	Lower Marker
2	50	150.00	4,545.5	Ladder Peak
3	100	150.00	2,272.7	Ladder Peak
4	150	150.00	1,515.2	Ladder Peak
5	200	150.00	1,136.4	Ladder Peak
6	300	150.00	757.6	Ladder Peak
7	400	150.00	568.2	Ladder Peak
8	500	150.00	454.5	Ladder Peak
9	600	150.00	378.8	Ladder Peak
10	700	150.00	324.7	Ladder Peak
11	1,000	150.00	227.3	Ladder Peak
12	2,000	150.00	113.6	Ladder Peak
13	3,000	150.00	75.8	Ladder Peak
14	7,000	150.00	32.5	Ladder Peak
15	10,380	75.00	10.9	Upper Marker

Assay Class: High Sensitivity DNA Assay  
 Data Path: C:\...ents and Settings\Bioanalyzer\2012-11-13\2012-11-13\_005.xad

Created: 11/13/2012 2:01:05 PM  
 Modified: 11/13/2012 2:43:03 PM

**Electropherogram Summary Continued ...**



**Overall Results for sample 1 : 3-2 IR50 Endo-2**

Number of peaks found: 6                      Corr. Area 1: 597.1  
 Noise: 0.3

**Peak table for sample 1 : 3-2 IR50 Endo-2**

Peak	Size [bp]	Conc. [pg/μl]	Molarity [pmol/l]	Observations
1	35	125.00	5,411.3	Lower Marker
2	45	152.72	5,171.9	
3	368	130.84	538.9	
4	372	92.72	377.7	
5	405	372.71	1,395.3	
6	523	10.19	29.5	
7	558	4.75	12.9	
8	10,380	75.00	10.9	Upper Marker

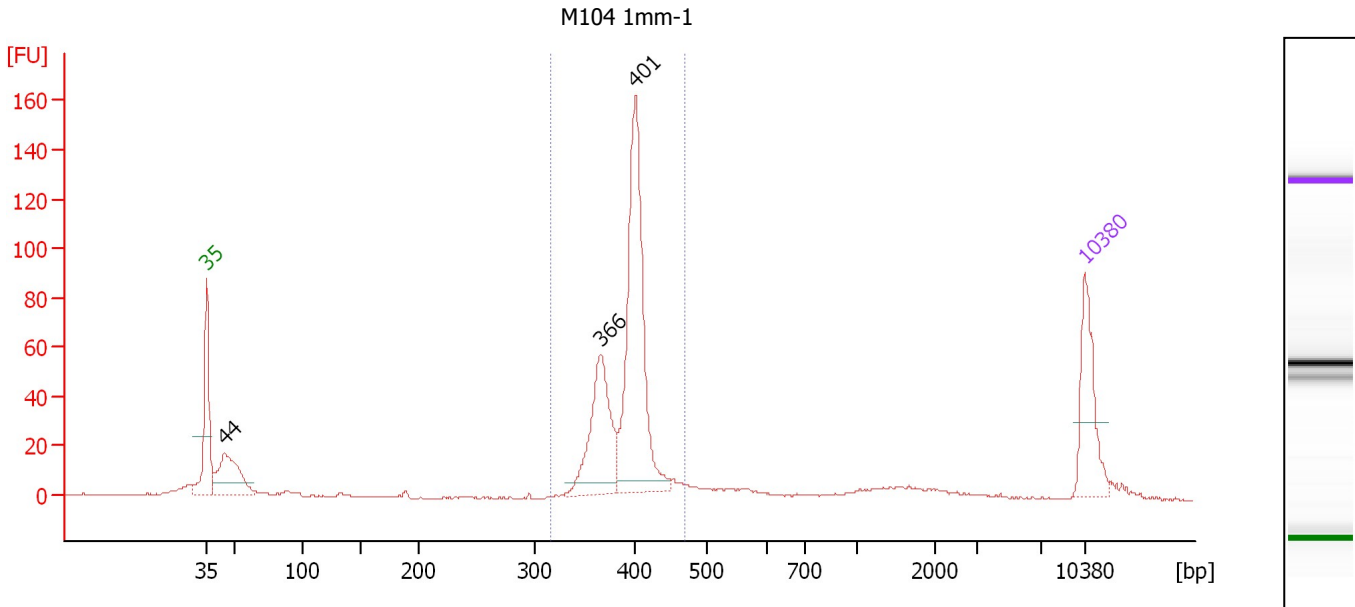
**Region table for sample 1 : 3-2 IR50 Endo-2**

From [bp]	To [bp]	Average Size [bp]	Molarity [pmol/l]	Conc. [pg/μl]	Corr. Area	% of Total	Size distribution in CV [%]	Color
307	471	392	2,443.7	630.02	597.1	71	6.6	Blue

Assay Class: High Sensitivity DNA Assay  
 Data Path: C:\...ents and Settings\Bioanalyzer\2012-11-13\2012-11-13\_005.xad

Created: 11/13/2012 2:01:05 PM  
 Modified: 11/13/2012 2:43:03 PM

**Electropherogram Summary Continued ...**



**Overall Results for sample 2 : M104 1mm-1**

Number of peaks found: 3                      Corr. Area 1: 501.4  
 Noise: 0.2

**Peak table for sample 2 : M104 1mm-1**

Peak	Size [bp]	Conc. [pg/μl]	Molarity [pmol/l]	Observations
1	35	125.00	5,411.3	Lower Marker
2	44	132.06	4,504.9	
3	366	163.40	676.9	
4	401	333.50	1,261.0	
5	10,380	75.00	10.9	Upper Marker

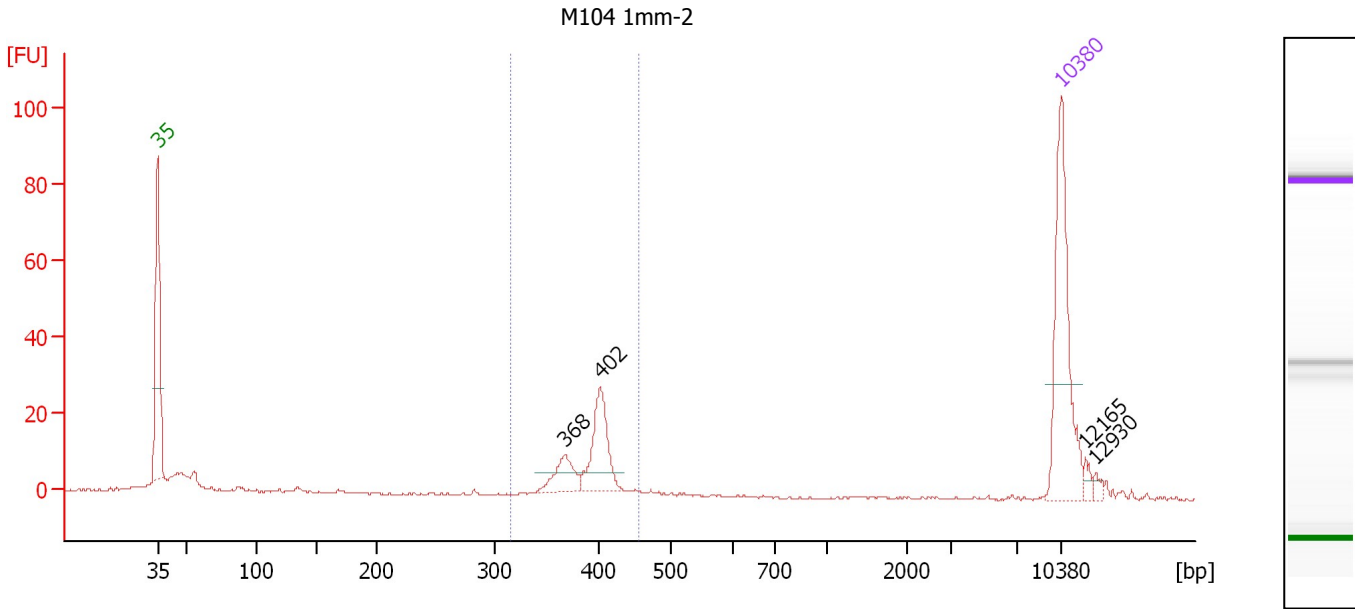
**Region table for sample 2 : M104 1mm-1**

From [bp]	To [bp]	Average Size [bp]	Molarity [pmol/l]	Conc. [pg/μl]	Corr. Area	% of Total	Size distribution in CV [%]	Color
317	471	392	2,065.5	533.43	501.4	69	6.0	Blue

Assay Class: High Sensitivity DNA Assay  
 Data Path: C:\...ents and Settings\Bioanalyzer\2012-11-13\2012-11-13\_005.xad

Created: 11/13/2012 2:01:05 PM  
 Modified: 11/13/2012 2:43:03 PM

**Electropherogram Summary Continued ...**



**Overall Results for sample 3 : M104 1mm-2**

Number of peaks found: 4                      Corr. Area 1: 86.6  
 Noise: 0.2

**Peak table for sample 3 : M104 1mm-2**

Peak	Size [bp]	Conc. [pg/μl]	Molarity [pmol/l]	Observations
1	35	125.00	5,411.3	Lower Marker
2	368	23.53	96.8	
3	402	47.32	178.4	
4	10,380	75.00	10.9	Upper Marker
5	12,165	0.00	0.0	
6	12,930	0.00	0.0	

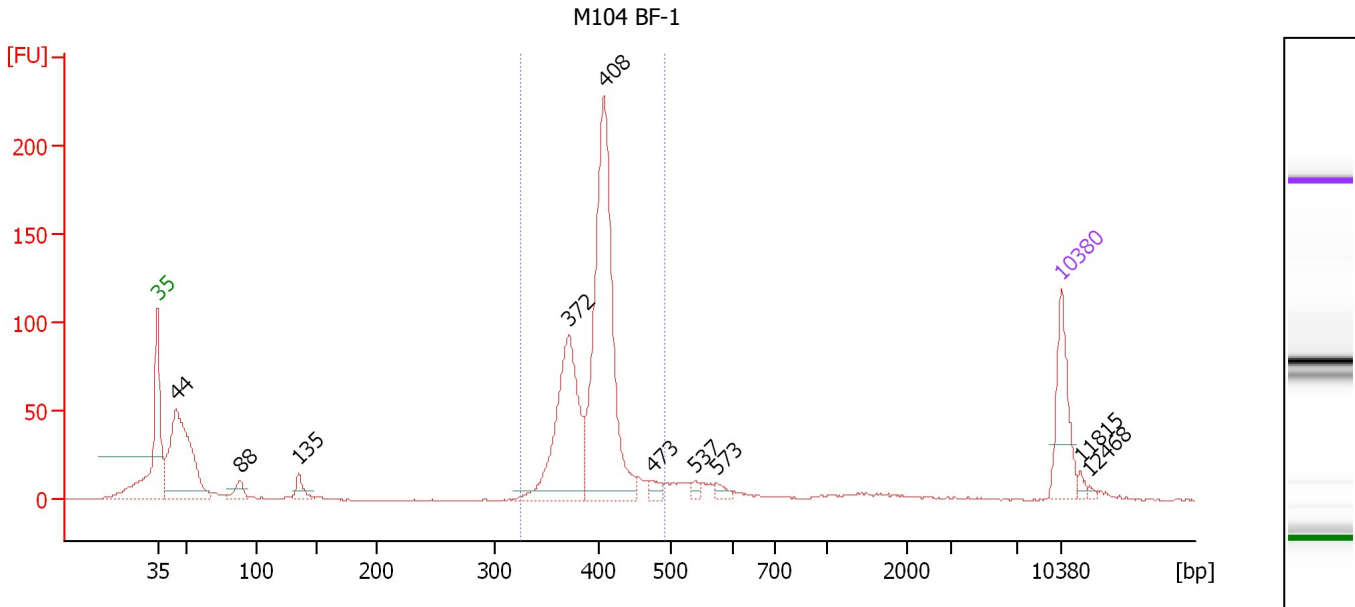
**Region table for sample 3 : M104 1mm-2**

From [bp]	To [bp]	Average Size [bp]	Molarity [pmol/l]	Conc. [pg/μl]	Corr. Area	% of Total	Size distribution in CV [%]	Color
316	455	392	319.8	82.41	86.6	53	5.7	Blue

Assay Class: High Sensitivity DNA Assay  
 Data Path: C:\...ents and Settings\Bioanalyzer\2012-11-13\2012-11-13\_005.xad

Created: 11/13/2012 2:01:05 PM  
 Modified: 11/13/2012 2:43:03 PM

**Electropherogram Summary Continued ...**



**Overall Results for sample 4 : M104 BF-1**

Number of peaks found: 10      Corr. Area 1: 796.5  
 Noise: 0.2

**Peak table for sample 4 : M104 BF-1**

Peak	Size [bp]	Conc. [pg/μl]	Molarity [pmol/l]	Observations
1	35	125.00	5,411.3	Lower Marker
2	44	343.45	11,695.3	
3	88	25.38	438.0	
4	135	24.65	277.2	
5	372	266.74	1,086.8	
6	408	474.95	1,765.8	
7	473	12.95	41.5	
8	537	7.42	20.9	
9	573	10.98	29.0	
10	10,380	75.00	10.9	Upper Marker
11	11,815	0.00	0.0	
12	12,468	0.00	0.0	

**Region table for sample 4 : M104 BF-1**

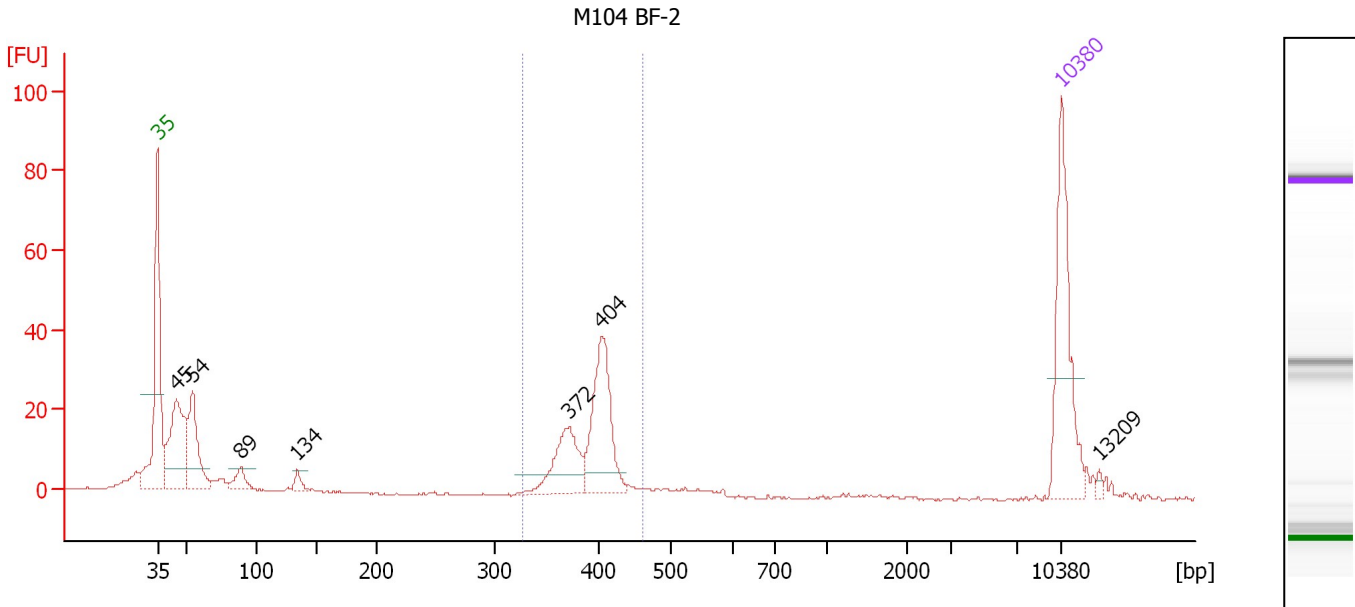
From [bp]	To [bp]	Average Size [bp]	Molarity [pmol/l]	Conc. [pg/μl]	Corr. Area	% of Total	Size distribution in CV [%]	Color
326	491	398	2,957.1	773.18	796.5	64	6.8	Blue



Assay Class: High Sensitivity DNA Assay  
 Data Path: C:\...ents and Settings\Bioanalyzer\2012-11-13\2012-11-13\_005.xad

Created: 11/13/2012 2:01:05 PM  
 Modified: 11/13/2012 2:43:03 PM

**Electropherogram Summary Continued ...**



**Overall Results for sample 5 : M104 BF-2**

Number of peaks found: 7                      Corr. Area 1: 143.0  
 Noise: 0.2

**Peak table for sample 5 : M104 BF-2**

Peak	Size [bp]	Conc. [pg/μl]	Molarity [pmol/l]	Observations
1	35	125.00	5,411.3	Lower Marker
2	45	114.71	3,892.9	
3	54	72.95	2,038.9	
4	89	17.22	294.0	
5	134	8.78	99.5	
6	372	55.63	226.9	
7	404	88.08	330.5	
8	10,380	75.00	10.9	Upper Marker
9	13,209	0.00	0.0	

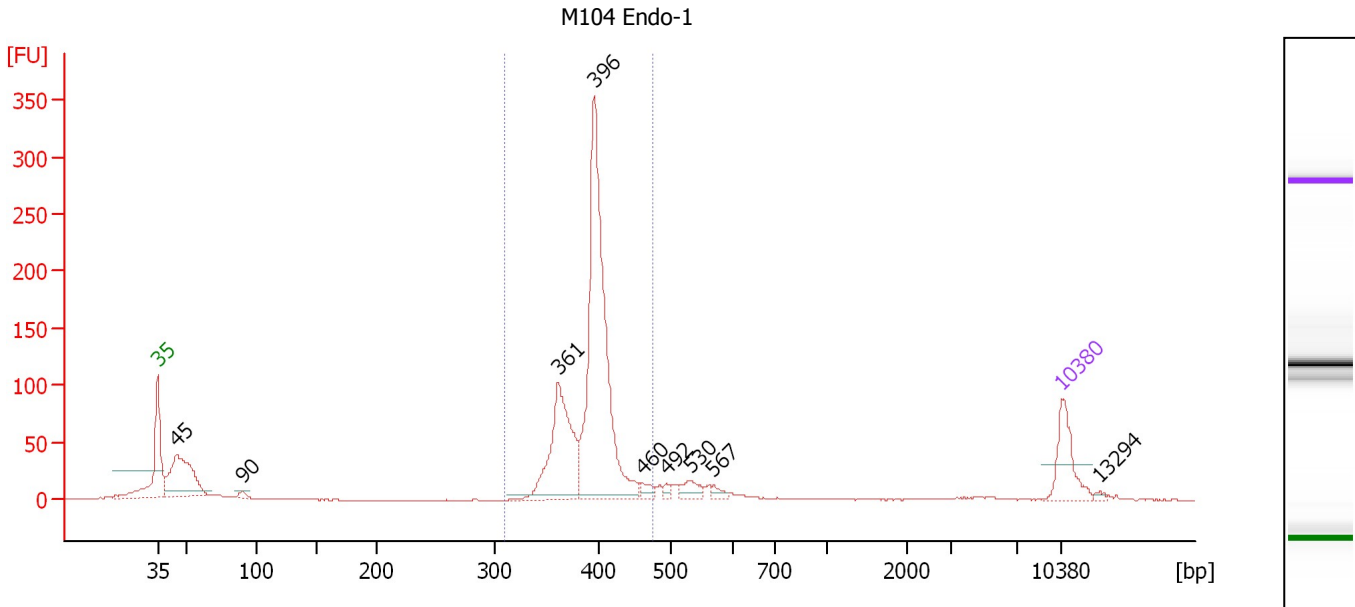
**Region table for sample 5 : M104 BF-2**

From [bp]	To [bp]	Average Size [bp]	Molarity [pmol/l]	Conc. [pg/μl]	Corr. Area	% of Total	Size distribution in CV [%]	Color
327	460	393	570.6	147.50	143.0	41	5.8	Blue

Assay Class: High Sensitivity DNA Assay  
 Data Path: C:\...ents and Settings\Bioanalyzer\2012-11-13\2012-11-13\_005.xad

Created: 11/13/2012 2:01:05 PM  
 Modified: 11/13/2012 2:43:03 PM

**Electropherogram Summary Continued ...**



**Overall Results for sample 6 : M104 Endo-1**

Number of peaks found: 9                      Corr. Area 1: 971.6  
 Noise: 0.3

**Peak table for sample 6 : M104 Endo-1**

Peak	Size [bp]	Conc. [pg/μl]	Molarity [pmol/l]	Observations
1	35	125.00	5,411.3	Lower Marker
2	45	259.26	8,771.3	
3	90	9.83	166.2	
4	361	278.06	1,165.8	
5	396	674.41	2,578.0	
6	460	18.29	60.3	
7	492	9.67	29.8	
8	530	30.14	86.1	
9	567	12.36	33.1	
10	10,380	75.00	10.9	Upper Marker
11	13,294	0.00	0.0	

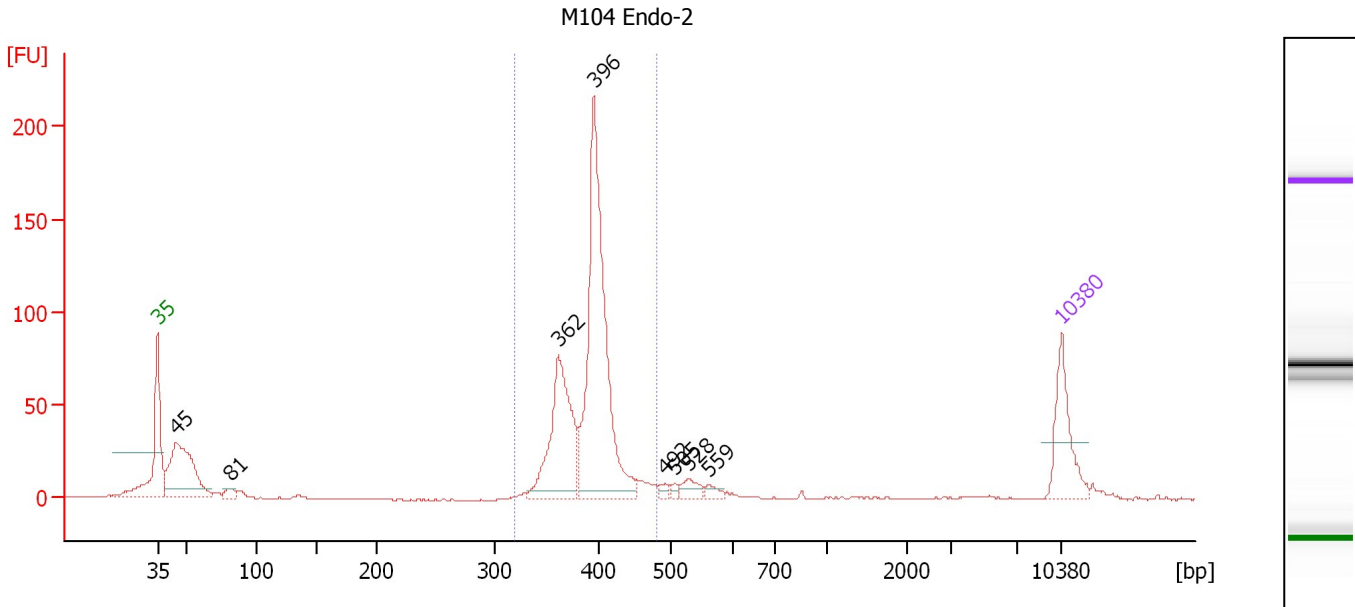
**Region table for sample 6 : M104 Endo-1**

From [bp]	To [bp]	Average Size [bp]	Molarity [pmol/l]	Conc. [pg/μl]	Corr. Area	% of Total	Size distribution in CV [%]	Color
310	474	393	3,730.2	965.41	971.6	73	6.0	Blue

Assay Class: High Sensitivity DNA Assay  
 Data Path: C:\...ents and Settings\Bioanalyzer\2012-11-13\2012-11-13\_005.xad

Created: 11/13/2012 2:01:05 PM  
 Modified: 11/13/2012 2:43:03 PM

**Electropherogram Summary Continued ...**



**Overall Results for sample 7 : M104 Endo-2**

Number of peaks found: 8                      Corr. Area 1: 657.0  
 Noise: 0.3

**Peak table for sample 7 : M104 Endo-2**

Peak	Size [bp]	Conc. [pg/μl]	Molarity [pmol/l]	Observations
1	35	125.00	5,411.3	Lower Marker
2	45	241.02	8,142.4	
3	81	15.61	291.3	
4	362	221.72	929.0	
5	396	459.58	1,759.7	
6	492	9.58	29.5	
7	505	6.26	18.8	
8	528	20.49	58.7	
9	559	10.59	28.7	
10	10,380	75.00	10.9	Upper Marker

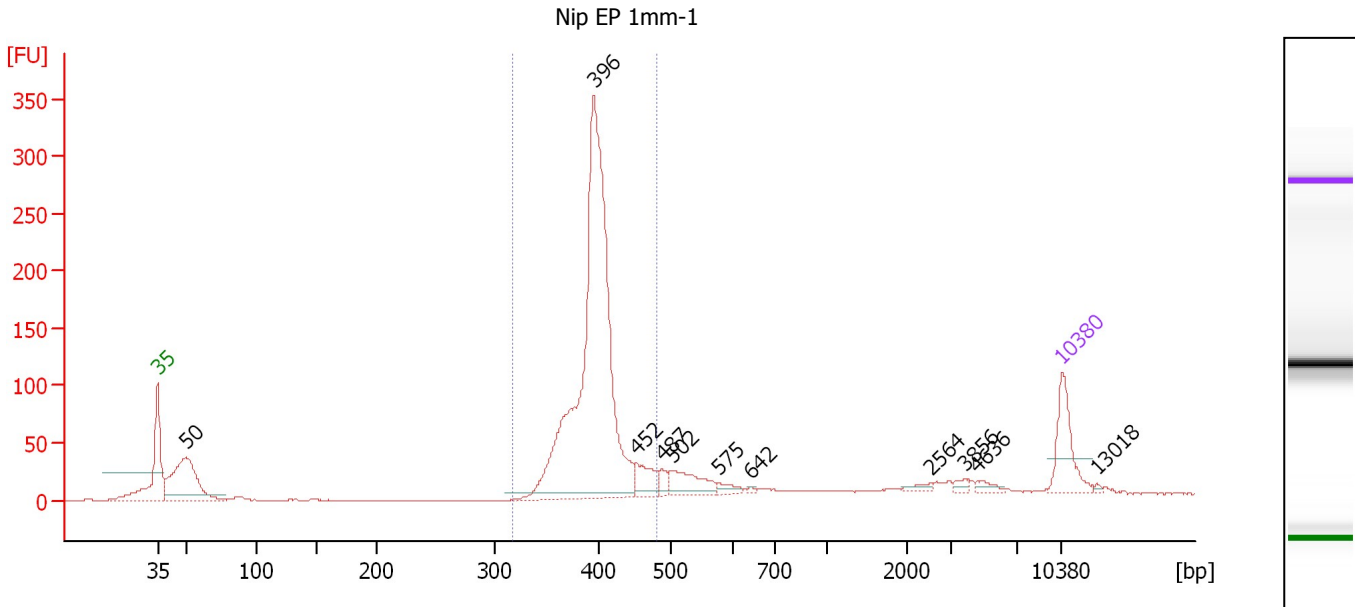
**Region table for sample 7 : M104 Endo-2**

From [bp]	To [bp]	Average Size [bp]	Molarity [pmol/l]	Conc. [pg/μl]	Corr. Area	% of Total	Size distribution in CV [%]	Color
320	480	392	2,712.0	699.14	657.0	71	6.5	Blue

Assay Class: High Sensitivity DNA Assay  
 Data Path: C:\...ents and Settings\Bioanalyzer\2012-11-13\2012-11-13\_005.xad

Created: 11/13/2012 2:01:05 PM  
 Modified: 11/13/2012 2:43:03 PM

**Electropherogram Summary Continued ...**



**Overall Results for sample 8 : Nip EP 1mm-1**

Number of peaks found: 11                      Corr. Area 1: 1,183.3  
 Noise: 0.1

**Peak table for sample 8 : Nip EP 1mm-1**

Peak	Size [bp]	Conc. [pg/μl]	Molarity [pmol/l]	Observations
1	35	125.00	5,411.3	Lower Marker
2	50	253.17	7,688.6	
3	396	986.69	3,779.1	
4	452	52.74	176.9	
5	487	16.82	52.4	
6	502	67.68	204.4	
7	575	14.18	37.4	
8	642	3.35	7.9	
9	2,564	8.36	4.9	
10	3,856	8.49	3.3	
11	4,636	10.02	3.3	
12	10,380	75.00	10.9	Upper Marker
13	13,018	0.00	0.0	

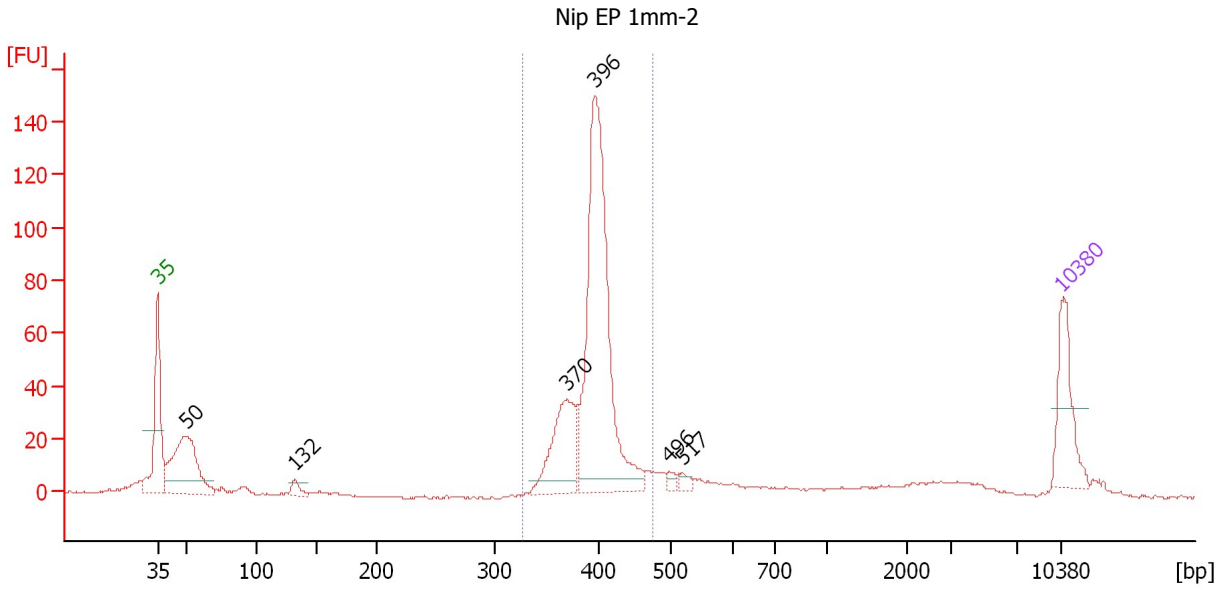
**Region table for sample 8 : Nip EP 1mm-1**

From [bp]	To [bp]	Average Size [bp]	Molarity [pmol/l]	Conc. [pg/μl]	Corr. Area	% of Total	Size distribution in CV [%]	Color
319	480	399	3,984.9	1,045.63	1,183.3	67	6.3	Blue

Assay Class: High Sensitivity DNA Assay  
 Data Path: C:\...ents and Settings\Bioanalyzer\2012-11-13\2012-11-13\_005.xad

Created: 11/13/2012 2:01:05 PM  
 Modified: 11/13/2012 2:43:03 PM

**Electropherogram Summary Continued ...**



**Overall Results for sample 9 : Nip EP 1mm-2**

Number of peaks found: 6      Corr. Area 1: 505.3  
 Noise: 0.4

**Peak table for sample 9 : Nip EP 1mm-2**

Peak	Size [bp]	Conc. [pg/μl]	Molarity [pmol/l]	Observations
1	35	125.00	5,411.3	Lower Marker
2	50	218.12	6,656.4	
3	132	17.85	205.4	
4	370	135.20	553.8	
5	396	490.94	1,876.6	
6	496	8.73	26.6	
7	517	10.41	30.5	
8	10,380	75.00	10.9	Upper Marker

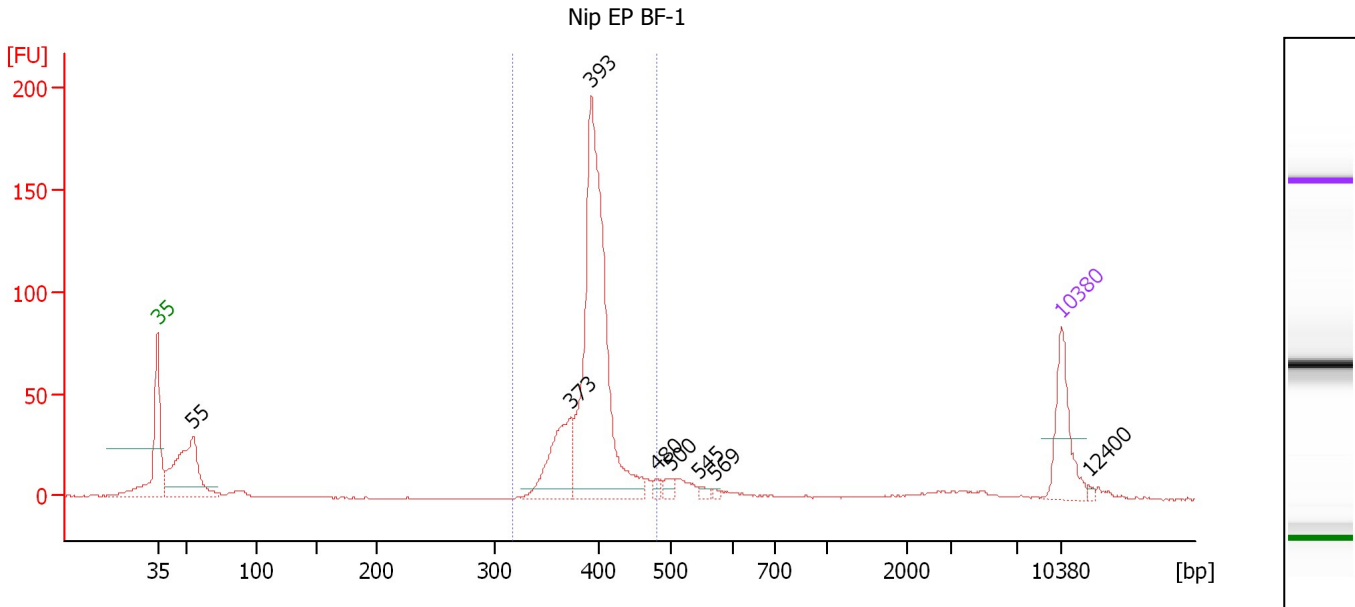
**Region table for sample 9 : Nip EP 1mm-2**

From [bp]	To [bp]	Average Size [bp]	Molarity [pmol/l]	Conc. [pg/μl]	Corr. Area	% of Total	Size distribution in CV [%]	Color
327	474	397	2,526.9	659.65	505.3	62	5.9	Blue

Assay Class: High Sensitivity DNA Assay  
 Data Path: C:\...ents and Settings\Bioanalyzer\2012-11-13\2012-11-13\_005.xad

Created: 11/13/2012 2:01:05 PM  
 Modified: 11/13/2012 2:43:03 PM

**Electropherogram Summary Continued ...**



**Overall Results for sample 10 : Nip EP BF-1**

Number of peaks found: 8                      Corr. Area 1: 602.0  
 Noise: 0.3

**Peak table for sample 10 : Nip EP BF-1**

Peak	Size [bp]	Conc. [pg/μl]	Molarity [pmol/l]	Observations
1	35	125.00	5,411.3	Lower Marker
2	55	229.88	6,363.2	
3	373	130.89	531.0	
4	393	565.70	2,180.2	
5	480	8.39	26.5	
6	500	13.95	42.3	
7	545	7.38	20.5	
8	569	3.92	10.4	
9	10,380	75.00	10.9	Upper Marker
10	12,400	0.00	0.0	

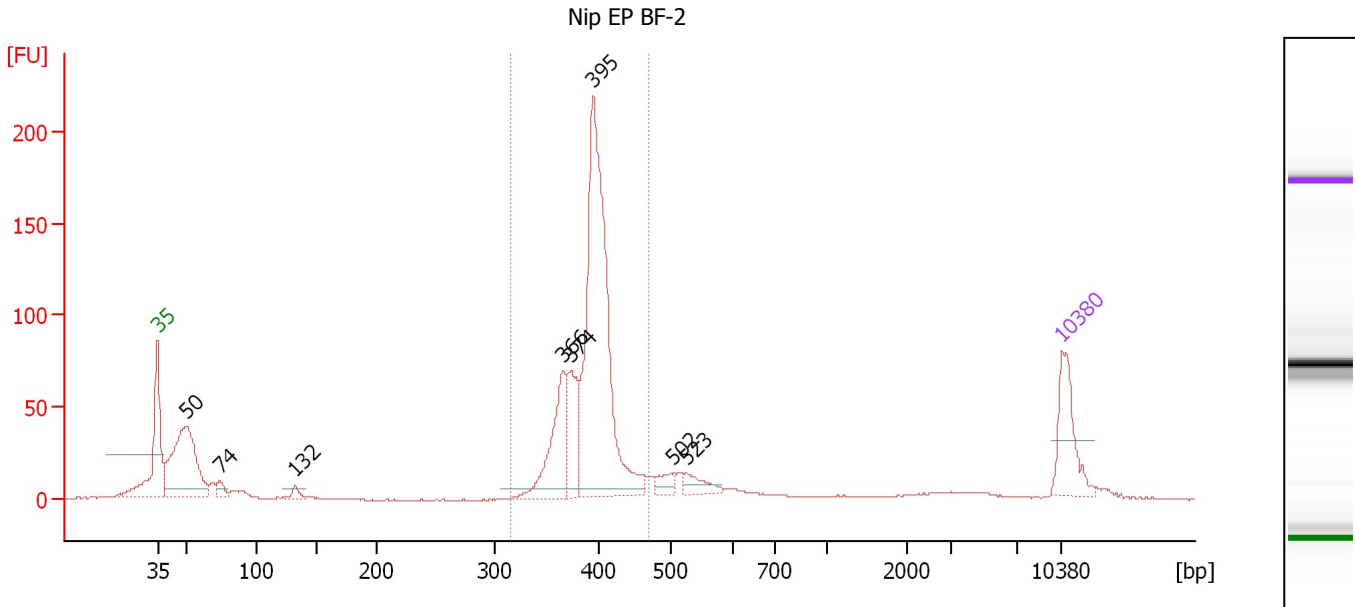
**Region table for sample 10 : Nip EP BF-1**

From [bp]	To [bp]	Average Size [bp]	Molarity [pmol/l]	Conc. [pg/μl]	Corr. Area	% of Total	Size distribution in CV [%]	Color
319	479	395	2,681.9	697.33	602.0	69	5.9	Blue

Assay Class: High Sensitivity DNA Assay  
 Data Path: C:\...ents and Settings\Bioanalyzer\2012-11-13\2012-11-13\_005.xad

Created: 11/13/2012 2:01:05 PM  
 Modified: 11/13/2012 2:43:03 PM

**Electropherogram Summary Continued ...**



**Overall Results for sample 11 : Nip EP BF-2**

Number of peaks found: 8                      Corr. Area 1: 758.2  
 Noise: 0.3

**Peak table for sample 11 : Nip EP BF-2**

Peak	Size [bp]	Conc. [pg/μl]	Molarity [pmol/l]	Observations
1	35	125.00	5,411.3	Lower Marker
2	50	303.92	9,286.2	
3	74	21.51	442.5	
4	132	12.76	146.9	
5	366	146.25	606.0	
6	374	94.81	384.2	
7	395	566.39	2,172.8	
8	502	22.50	67.9	
9	523	27.90	80.8	
10	10,380	75.00	10.9	Upper Marker

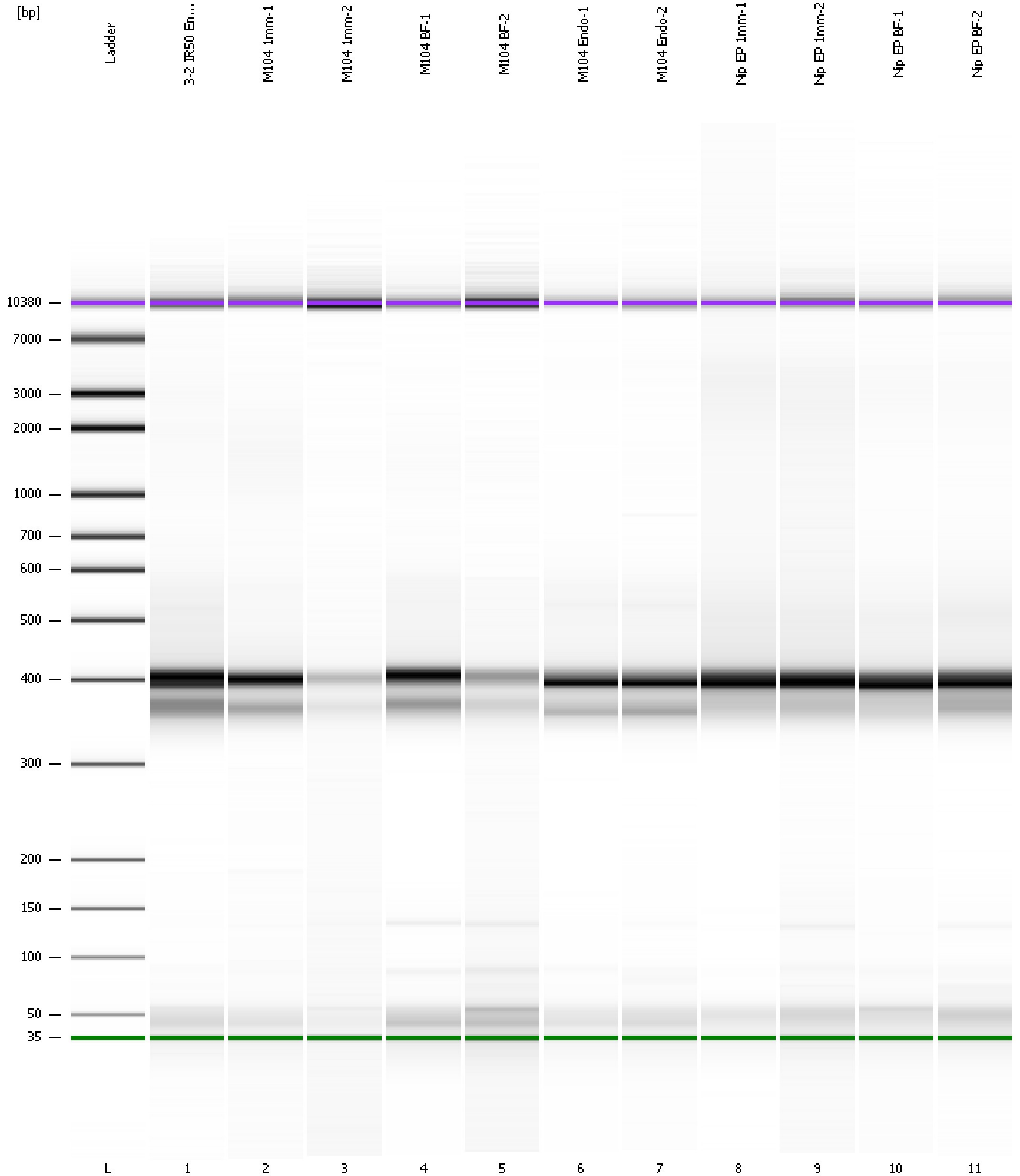
**Region table for sample 11 : Nip EP BF-2**

From [bp]	To [bp]	Average Size [bp]	Molarity [pmol/l]	Conc. [pg/μl]	Corr. Area	% of Total	Size distribution in CV [%]	Color
316	468	393	3,179.6	822.25	758.2	64	5.9	Blue

Assay Class: High Sensitivity DNA Assay  
Data Path: C:\...ents and Settings\Bioanalyzer\2012-11-13\2012-11-13\_005.xad

Created: 11/13/2012 2:01:05 PM  
Modified: 11/13/2012 2:43:03 PM

**Gel Image**





Assay Class: High Sensitivity DNA Assay  
 Data Path: C:\...ents and Settings\Bioanalyzer\2012-11-13\2012-11-13\_005.xad

Created: 11/13/2012 2:01:05 PM  
 Modified: 11/13/2012 2:43:03 PM

**Run Logbook**

Description	Number	Source	Category	Sub Category	Time	Time Zone	User	Host
Run ended on port 1 (Number of wells acquired: 12)		Instrument	Run		11/13/2012 2:42:23 PM	(GMT --08:00) Pacific Standard Time	UC Davis	D8XSMGH1
Run started on port 1 (File: C:\Documents and Settings\Bioanalyzer\2012-11-13\2012-11-13_005.xad)		Instrument	Run		11/13/2012 2:01:10 PM	(GMT --08:00) Pacific Standard Time	UC Davis	D8XSMGH1
Product Number : G2938B		Instrument	Run		11/13/2012 2:01:10 PM	(GMT --08:00) Pacific Standard Time	UC Davis	D8XSMGH1
Name :		Instrument	Run		11/13/2012 2:01:10 PM	(GMT --08:00) Pacific Standard Time	UC Davis	D8XSMGH1
Vendor : Agilent Technologies		Instrument	Run		11/13/2012 2:01:10 PM	(GMT --08:00) Pacific Standard Time	UC Davis	D8XSMGH1
Serial# : DE13701086		Instrument	Run		11/13/2012 2:01:10 PM	(GMT --08:00) Pacific Standard Time	UC Davis	D8XSMGH1
Firmware : C.01.069		Instrument	Run		11/13/2012 2:01:10 PM	(GMT --08:00) Pacific Standard Time	UC Davis	D8XSMGH1
Cartridge : Electrode		Instrument	Run		11/13/2012 2:01:10 PM	(GMT --08:00) Pacific Standard Time	UC Davis	D8XSMGH1