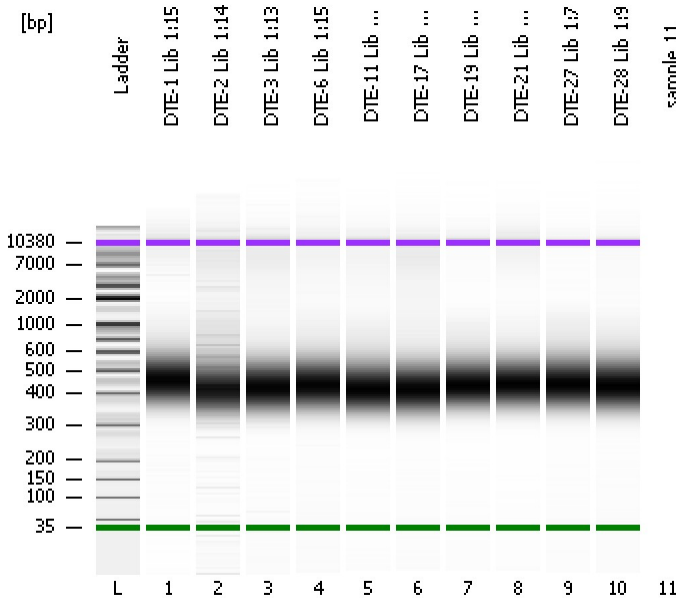


Assay Class: High Sensitivity DNA Assay  
Data Path: C:\...ents and Settings\Bioanalyzer\2012-11-13\2012-11-13\_007.xad

Created: 11/13/2012 4:06:51 PM  
Modified: 11/13/2012 4:51:46 PM

Electrophoresis File Run Summary



Instrument Information:

Instrument Name: DE13701086      Firmware: C.01.069  
Serial#: DE13701086      Type: G2938B

Assay Information:

Assay Origin Path: C:\Program Files\Agilent\2100 bioanalyzer\2100 expert\assays\dsDNA\High Sensitivity DNA.xsy  
Assay Class: High Sensitivity DNA Assay  
Version: 1.03  
Assay Comments: Copyright © 2003-2010 Agilent Technologies

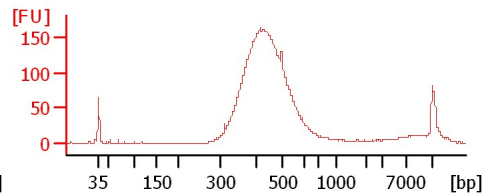
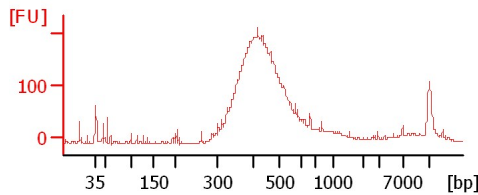
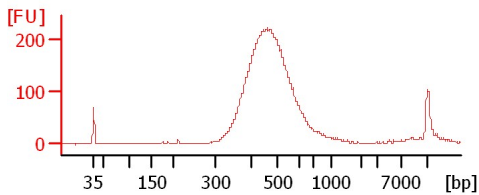
Chip Information:

Chip Lot #:   
Reagent Kit Lot #:   
Chip Comments:

DTE-1 Lib 1:15

DTE-2 Lib 1:14

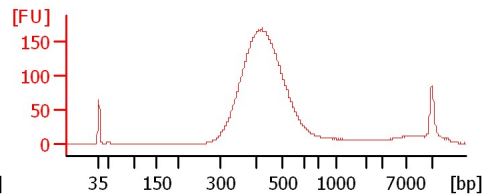
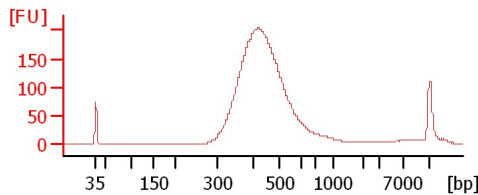
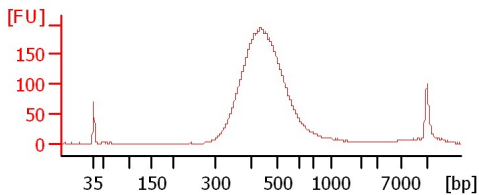
DTE-3 Lib 1:13



DTE-6 Lib 1:15

DTE-11 Lib 1:15

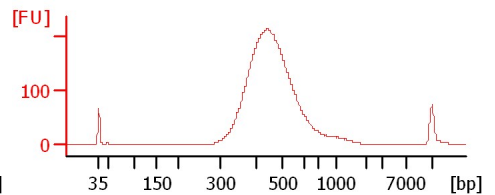
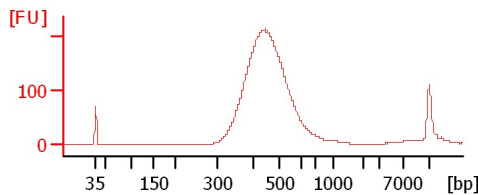
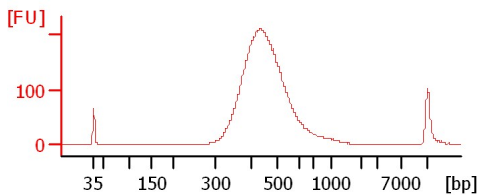
DTE-17 Lib 1:12



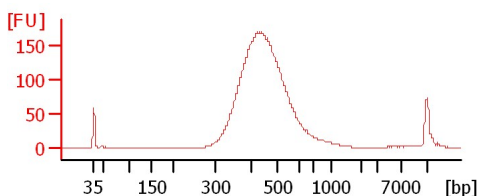
DTE-19 Lib 1:10

DTE-21 Lib 1:14

DTE-27 Lib 1:7



DTE-28 Lib 1:9



Assay Class: High Sensitivity DNA Assay  
 Data Path: C:\...ents and Settings\Bioanalyzer\2012-11-13\2012-11-13\_007.xad

Created: 11/13/2012 4:06:51 PM  
 Modified: 11/13/2012 4:51:46 PM

**Electrophoresis File Run Summary (Chip Summary)**

Sample Name	Sample Comment	Rest. Digest	Status	Observation	Result Label	Result Color
DTE-1 Lib 1:15		<input type="checkbox"/>	✓			
DTE-2 Lib 1:14		<input type="checkbox"/>	✓			
DTE-3 Lib 1:13		<input type="checkbox"/>	✓			
DTE-6 Lib 1:15		<input type="checkbox"/>	✓			
DTE-11 Lib 1:15		<input type="checkbox"/>	✓			
DTE-17 Lib 1:12		<input type="checkbox"/>	✓			
DTE-19 Lib 1:10		<input type="checkbox"/>	✓			
DTE-21 Lib 1:14		<input type="checkbox"/>	✓			
DTE-27 Lib 1:7		<input type="checkbox"/>	✓			
DTE-28 Lib 1:9		<input type="checkbox"/>	✓			
sample 11		<input type="checkbox"/>				
Ladder		<input type="checkbox"/>	✓			

**Chip Lot #**

**Reagent Kit Lot #**

**Chip Comments :**

Assay Class: High Sensitivity DNA Assay  
Data Path: C:\...ents and Settings\Bioanalyzer\2012-11-13\2012-11-13\_007.xad

Created: 11/13/2012 4:06:51 PM  
Modified: 11/13/2012 4:51:46 PM

**Electrophoresis Assay Details**

**General Analysis Settings**

Number of Available Sample and Ladder Wells (Max.) : 12  
Minimum Visible Range [s] : 32  
Maximum Visible Range [s] : 138  
Start Analysis Time Range [s] : 33  
End Analysis Time Range [s] : 137.5  
Ladder Concentration [pg/μl] : 1950  
Uses Standard Area for Ladder Fragments  
Lower Marker Concentration [pg/μl] : 125  
Upper Marker Concentration [pg/μl] : 75  
Used Upper Marker for Quantitation  
Standard Curve Fit is Point to Point  
Show Data Aligned to Lower and Upper Marker

**Integrator Settings**

Integration Start Time [s] : 33.05  
Integration End Time [s] : 137  
Slope Threshold : 0.8  
Height Threshold [FU] : 5  
Area Threshold : 0.1  
Width Threshold [s] : 0.6  
Baseline Plateau [s] : 0.5

**Filter Settings**

Filter Width [s] : 0.5  
Polynomial Order : 4

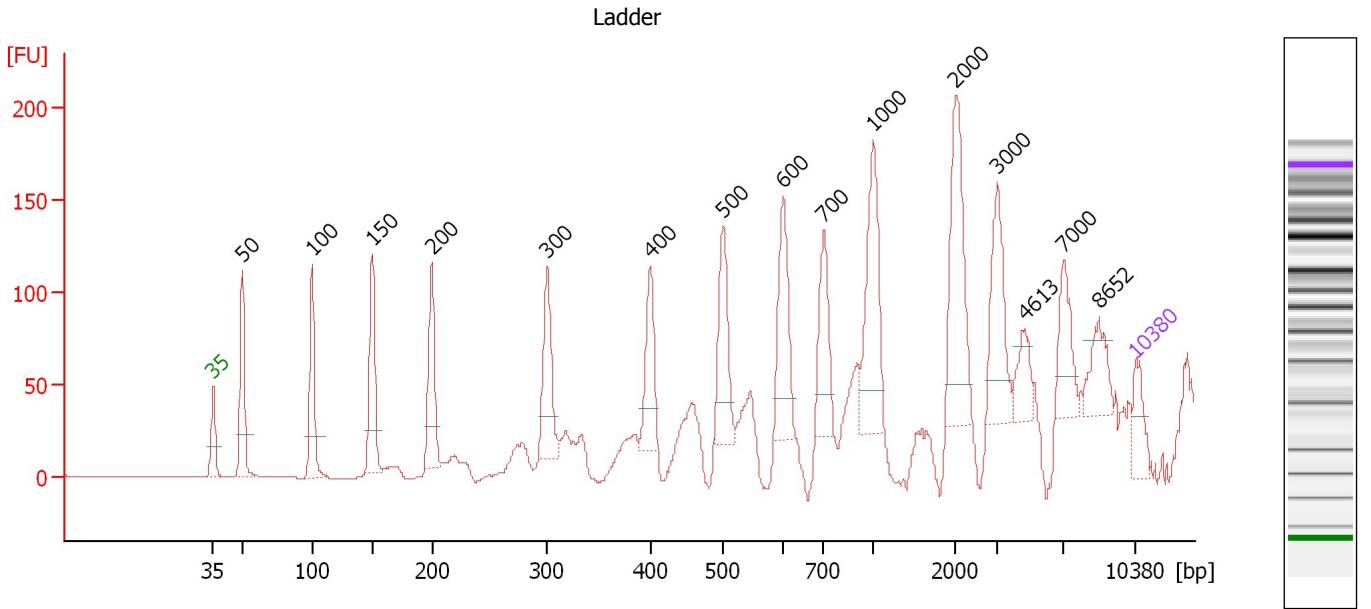
**Ladder**

Ladder Peak	Size	Area
1	35	160
2	50	210
3	100	208
4	150	221
5	200	242
6	300	270
7	400	305
8	500	306
9	600	336
10	700	321
11	1000	366
12	2000	413
13	3000	411
14	7000	400
15	10380	214

Assay Class: High Sensitivity DNA Assay  
 Data Path: C:\...ents and Settings\Bioanalyzer\2012-11-13\2012-11-13\_007.xad

Created: 11/13/2012 4:06:51 PM  
 Modified: 11/13/2012 4:51:46 PM

**Electropherogram Summary**



**Overall Results for Ladder**

Noise: 0.2

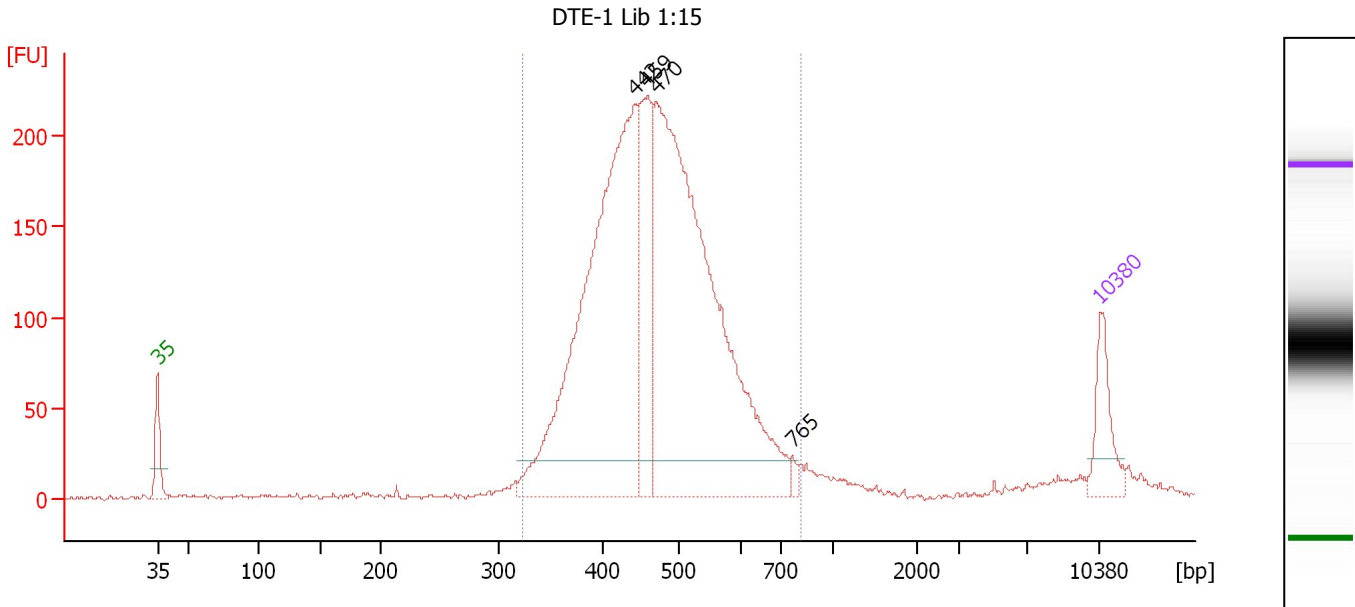
**Peak table for Ladder**

Peak	Size [bp]	Conc. [pg/μl]	Molarity [pmol/l]	Observations
1	35	125.00	5,411.3	Lower Marker
2	50	150.00	4,545.5	Ladder Peak
3	100	150.00	2,272.7	Ladder Peak
4	150	150.00	1,515.2	Ladder Peak
5	200	150.00	1,136.4	Ladder Peak
6	300	150.00	757.6	Ladder Peak
7	400	150.00	568.2	Ladder Peak
8	500	150.00	454.5	Ladder Peak
9	600	150.00	378.8	Ladder Peak
10	700	150.00	324.7	Ladder Peak
11	1,000	150.00	227.3	Ladder Peak
12	2,000	150.00	113.6	Ladder Peak
13	3,000	150.00	75.8	Ladder Peak
14	4,613	0.00	0.0	
15	7,000	150.00	32.5	Ladder Peak
16	8,652	0.00	0.0	
17	10,380	75.00	10.9	Upper Marker

Assay Class: High Sensitivity DNA Assay  
 Data Path: C:\...ents and Settings\Bioanalyzer\2012-11-13\2012-11-13\_007.xad

Created: 11/13/2012 4:06:51 PM  
 Modified: 11/13/2012 4:51:46 PM

**Electropherogram Summary Continued ...**



**Setpoint Deviations for sample 1 : DTE-1 Lib 1:15**

Height Threshold [FU] : 20

**Overall Results for sample 1 : DTE-1 Lib 1:15**

Number of peaks found: 4                      Corr. Area 1: 3,056.7  
 Noise: 1.1

**Peak table for sample 1 : DTE-1 Lib 1:15**

Peak	Size [bp]	Conc. [pg/μl]	Molarity [pmol/l]	Observations
1	35	125.00	5,411.3	Lower Marker
2	442	1,118.96	3,838.1	
3	459	285.54	943.5	
4	470	1,300.07	4,191.2	
5	765	12.84	25.4	
6	10,380	75.00	10.9	Upper Marker

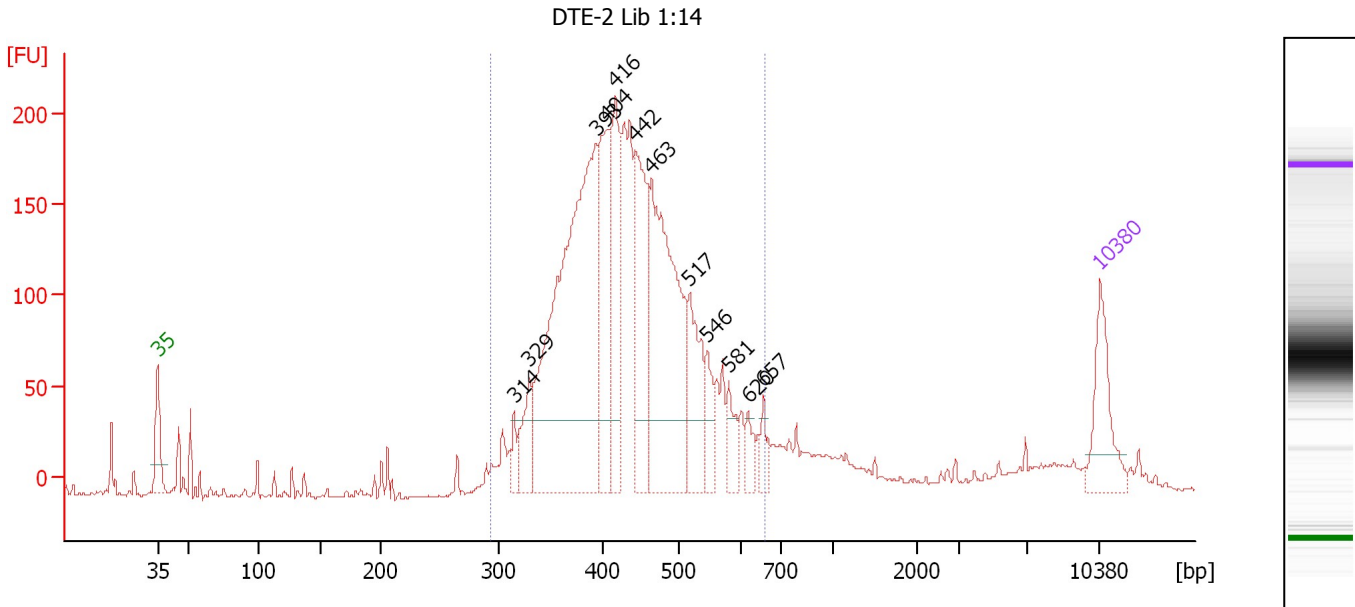
**Region table for sample 1 : DTE-1 Lib 1:15**

From [bp]	To [bp]	Average Size [bp]	Molarity [pmol/l]	Conc. [pg/μl]	Corr. Area	% of Total	Size distribution in CV [%]	Color
322	812	474	8,948.7	2,699.97	3,056.7	92	17.1	Blue

Assay Class: High Sensitivity DNA Assay  
 Data Path: C:\...ents and Settings\Bioanalyzer\2012-11-13\2012-11-13\_007.xad

Created: 11/13/2012 4:06:51 PM  
 Modified: 11/13/2012 4:51:46 PM

**Electropherogram Summary Continued ...**



**Setpoint Deviations for sample 2 : DTE-2 Lib 1:14**

Height Threshold [FU] : 40

**Overall Results for sample 2 : DTE-2 Lib 1:14**

Number of peaks found: 12      Corr. Area 1: 2,936.9  
 Noise: 0.8

**Peak table for sample 2 : DTE-2 Lib 1:14**

Peak	Size [bp]	Conc. [pg/μl]	Molarity [pmol/l]	Observations
1	35	125.00	5,411.3	Lower Marker
2	314	24.43	117.8	
3	329	67.22	310.0	
4	393	698.07	2,694.6	
5	404	207.34	778.0	
6	416	145.92	532.0	
7	442	207.47	711.8	
8	463	398.14	1,303.2	
9	517	121.94	357.1	
10	546	45.53	126.2	
11	581	37.41	97.5	
12	620	24.55	60.0	
13	657	21.32	49.2	
14	10,380	75.00	10.9	Upper Marker

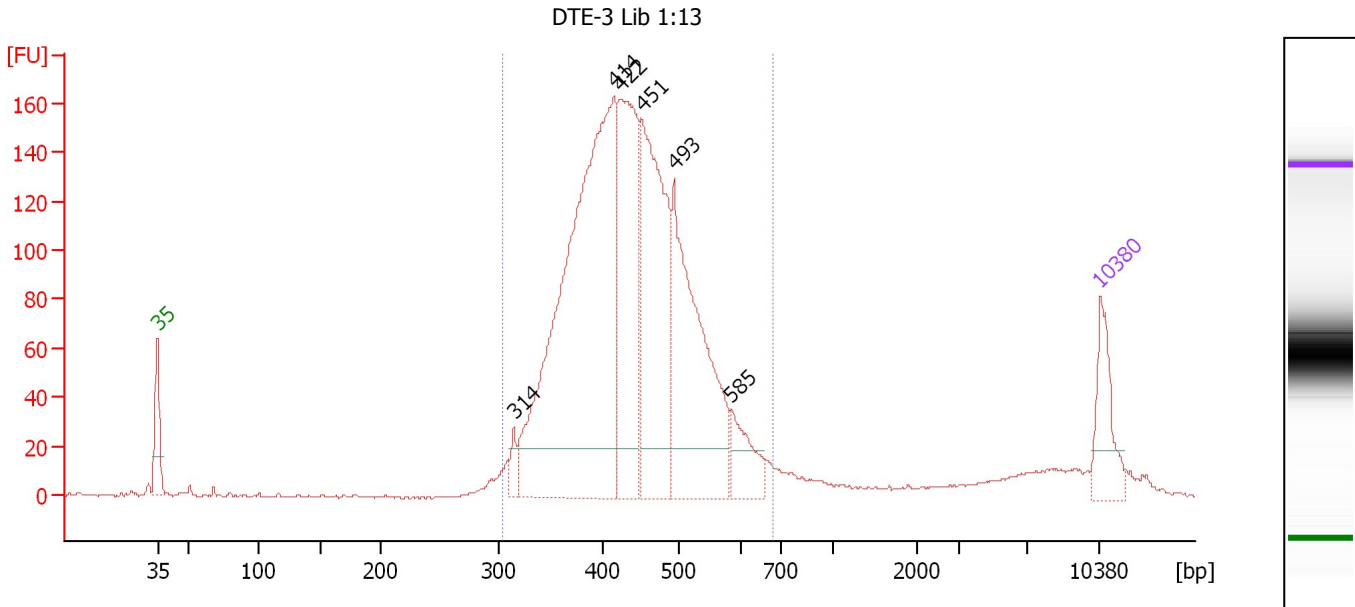
**Region table for sample 2 : DTE-2 Lib 1:14**

From [bp]	To [bp]	Average Size [bp]	Molarity [pmol/l]	Conc. [pg/μl]	Corr. Area	% of Total	Size distribution in CV [%]	Color
292	659	436	8,436.5	2,342.28	2,936.9	85	17.0	Blue

Assay Class: High Sensitivity DNA Assay  
 Data Path: C:\...ents and Settings\Bioanalyzer\2012-11-13\2012-11-13\_007.xad

Created: 11/13/2012 4:06:51 PM  
 Modified: 11/13/2012 4:51:46 PM

**Electropherogram Summary Continued ...**



**Setpoint Deviations for sample 3 : DTE-3 Lib 1:13**

Height Threshold [FU] : 20

**Overall Results for sample 3 : DTE-3 Lib 1:13**

Number of peaks found: 6                      Corr. Area 1: 2,294.8  
 Noise: 0.6

**Peak table for sample 3 : DTE-3 Lib 1:13**

Peak	Size [bp]	Conc. [pg/μl]	Molarity [pmol/l]	Observations
1	35	125.00	5,411.3	Lower Marker
2	314	27.29	131.7	
3	414	1,064.16	3,898.8	
4	422	382.85	1,375.8	
5	451	443.03	1,489.4	
6	493	448.40	1,376.8	
7	585	77.24	199.9	
8	10,380	75.00	10.9	Upper Marker

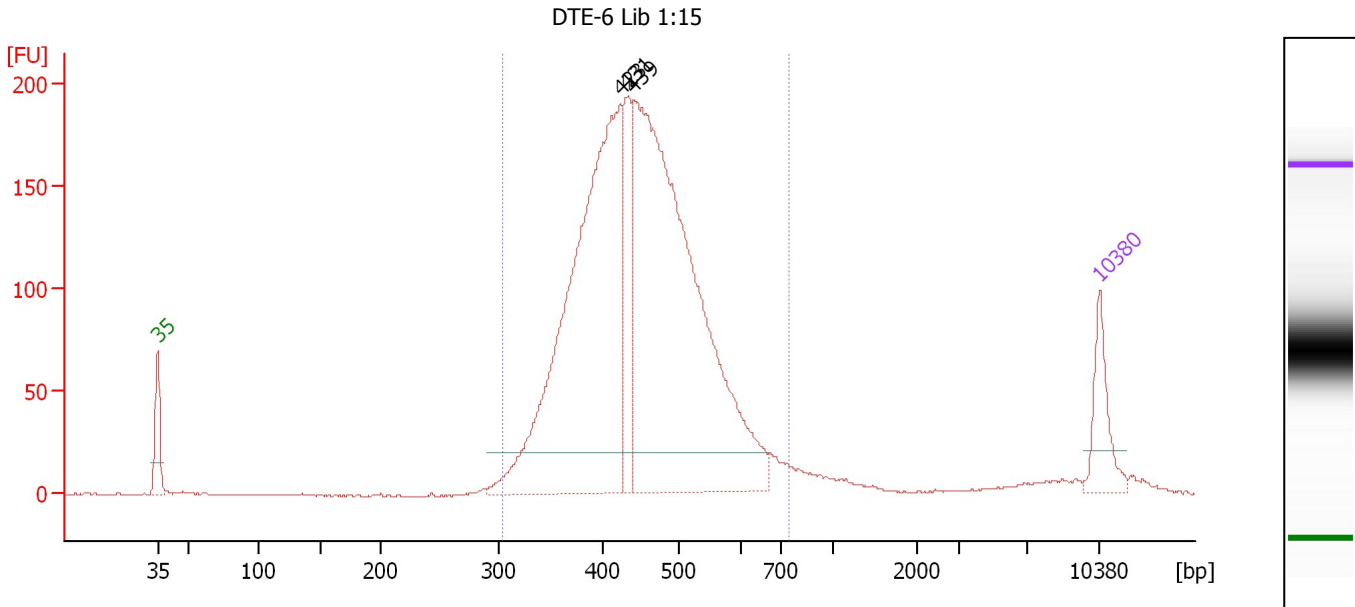
**Region table for sample 3 : DTE-3 Lib 1:13**

From [bp]	To [bp]	Average Size [bp]	Molarity [pmol/l]	Conc. [pg/μl]	Corr. Area	% of Total	Size distribution in CV [%]	Color
303	678	441	8,943.7	2,519.95	2,294.8	90	16.2	Blue

Assay Class: High Sensitivity DNA Assay  
 Data Path: C:\...ents and Settings\Bioanalyzer\2012-11-13\2012-11-13\_007.xad

Created: 11/13/2012 4:06:51 PM  
 Modified: 11/13/2012 4:51:46 PM

**Electropherogram Summary Continued ...**



**Setpoint Deviations for sample 4 : DTE-6 Lib 1:15**

Height Threshold [FU] : 20

**Overall Results for sample 4 : DTE-6 Lib 1:15**

Number of peaks found: 3                      Corr. Area 1: 2,700.9  
 Noise: 0.4

**Peak table for sample 4 : DTE-6 Lib 1:15**

Peak	Size [bp]	Conc. [pg/μl]	Molarity [pmol/l]	Observations
1	35	125.00	5,411.3	Lower Marker
2	423	1,136.86	4,075.7	
3	431	204.84	720.3	
4	439	1,379.70	4,760.8	
5	10,380	75.00	10.9	Upper Marker

**Region table for sample 4 : DTE-6 Lib 1:15**

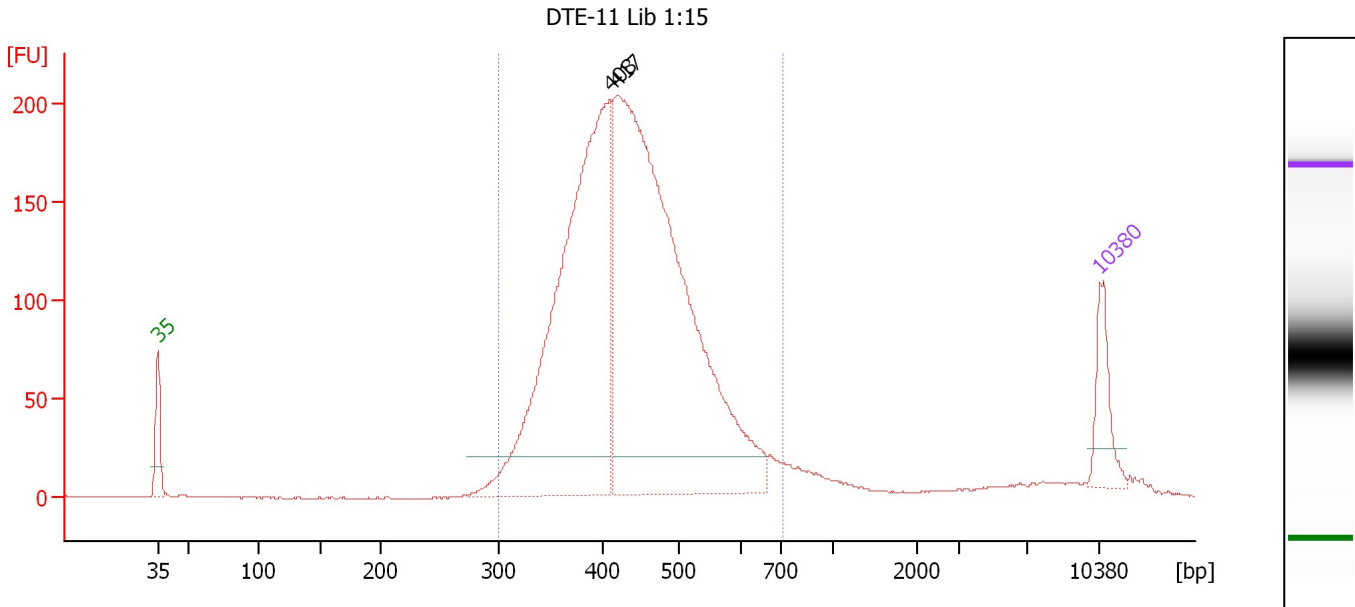
From [bp]	To [bp]	Average Size [bp]	Molarity [pmol/l]	Conc. [pg/μl]	Corr. Area	% of Total	Size distribution in CV [%]	Color
304	746	452	9,588.6	2,765.16	2,700.9	93	16.9	Blue



Assay Class: High Sensitivity DNA Assay  
 Data Path: C:\...ents and Settings\Bioanalyzer\2012-11-13\2012-11-13\_007.xad

Created: 11/13/2012 4:06:51 PM  
 Modified: 11/13/2012 4:51:46 PM

**Electropherogram Summary Continued ...**



**Setpoint Deviations for sample 5 : DTE-11 Lib 1:15**

Height Threshold [FU] : 20

**Overall Results for sample 5 : DTE-11 Lib 1:15**

Number of peaks found: 2                      Corr. Area 1: 2,860.8  
 Noise: 0.3

**Peak table for sample 5 : DTE-11 Lib 1:15**

Peak	Size [bp]	Conc. [pg/µl]	Molarity [pmol/l]	Observations
1	35	125.00	5,411.3	Lower Marker
2	408	1,163.82	4,321.0	
3	417	1,566.68	5,687.7	
4	10,380	75.00	10.9	Upper Marker

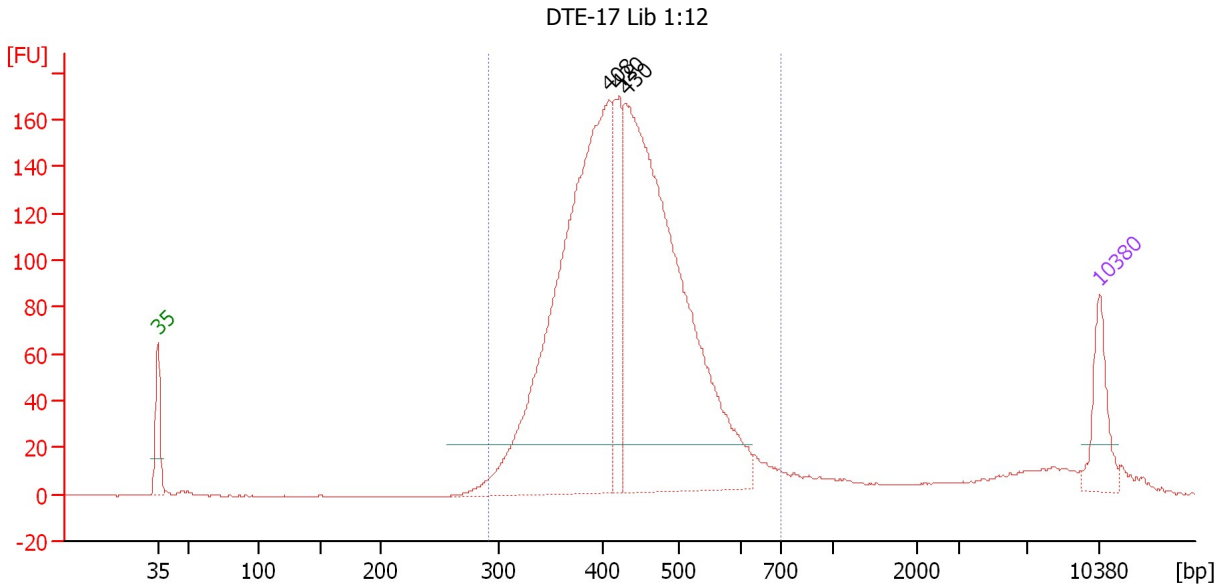
**Region table for sample 5 : DTE-11 Lib 1:15**

From [bp]	To [bp]	Average Size [bp]	Molarity [pmol/l]	Conc. [pg/µl]	Corr. Area	% of Total	Size distribution in CV [%]	Color
299	710	440	9,961.6	2,791.87	2,860.8	93	17.1	Blue

Assay Class: High Sensitivity DNA Assay  
 Data Path: C:\...ents and Settings\Bioanalyzer\2012-11-13\2012-11-13\_007.xad

Created: 11/13/2012 4:06:51 PM  
 Modified: 11/13/2012 4:51:46 PM

**Electropherogram Summary Continued ...**



**Setpoint Deviations for sample 6 : DTE-17 Lib 1:12**

Height Threshold [FU] : 20

**Overall Results for sample 6 : DTE-17 Lib 1:12**

Number of peaks found: 3                                      Corr. Area 1: 2,384.8  
 Noise: 0.3

**Peak table for sample 6 : DTE-17 Lib 1:12**

Peak	Size [bp]	Conc. [pg/µl]	Molarity [pmol/l]	Observations
1	35	125.00	5,411.3	Lower Marker
2	408	1,205.78	4,479.8	
3	420	207.30	748.3	
4	430	1,239.90	4,369.6	
5	10,380	75.00	10.9	Upper Marker

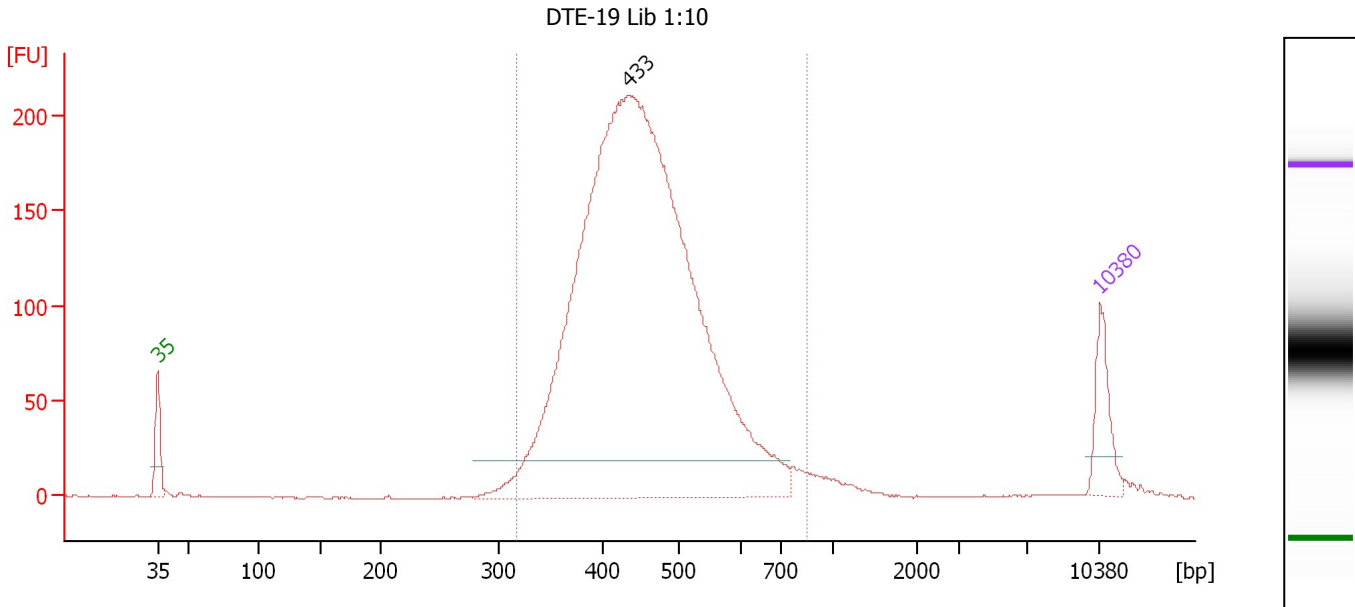
**Region table for sample 6 : DTE-17 Lib 1:12**

From [bp]	To [bp]	Average Size [bp]	Molarity [pmol/l]	Conc. [pg/µl]	Corr. Area	% of Total	Size distribution in CV [%]	Color
291	699	435	10,004.2	2,774.92	2,384.8	90	16.8	Blue

Assay Class: High Sensitivity DNA Assay  
 Data Path: C:\...ents and Settings\Bioanalyzer\2012-11-13\2012-11-13\_007.xad

Created: 11/13/2012 4:06:51 PM  
 Modified: 11/13/2012 4:51:46 PM

**Electropherogram Summary Continued ...**



**Setpoint Deviations for sample 7 : DTE-19 Lib 1:10**

Height Threshold [FU] : 20

**Overall Results for sample 7 : DTE-19 Lib 1:10**

Number of peaks found: 1                      Corr. Area 1: 2,787.8  
 Noise: 0.4

**Peak table for sample 7 : DTE-19 Lib 1:10**

Peak	Size [bp]	Conc. [pg/μl]	Molarity [pmol/l]	Observations
1	35	125.00	5,411.3	Lower Marker
2	433	2,773.87	9,698.8	
3	10,380	75.00	10.9	Upper Marker

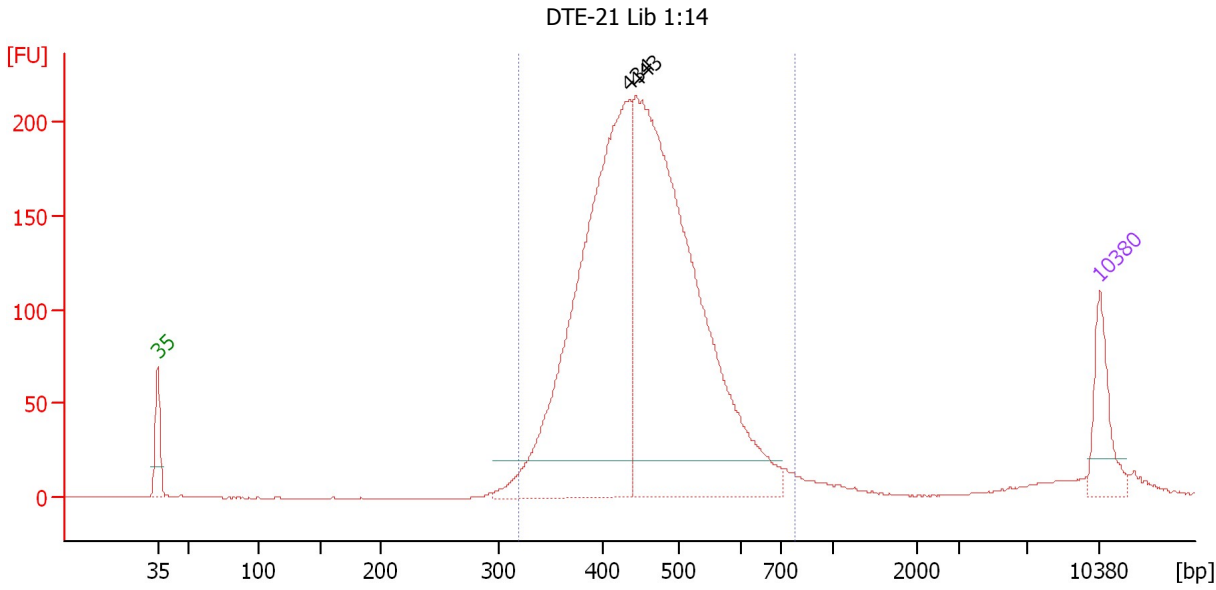
**Region table for sample 7 : DTE-19 Lib 1:10**

From [bp]	To [bp]	Average Size [bp]	Molarity [pmol/l]	Conc. [pg/μl]	Corr. Area	% of Total	Size distribution in CV [%]	Color
316	857	458	9,438.8	2,749.39	2,787.8	96	17.9	Blue

Assay Class: High Sensitivity DNA Assay  
Data Path: C:\...ents and Settings\Bioanalyzer\2012-11-13\2012-11-13\_007.xad

Created: 11/13/2012 4:06:51 PM  
Modified: 11/13/2012 4:51:46 PM

Electropherogram Summary Continued ...



Setpoint Deviations for sample 8 : DTE-21 Lib 1:14

Height Threshold [FU] : 20

Overall Results for sample 8 : DTE-21 Lib 1:14

Number of peaks found: 2                                      Corr. Area 1: 2,761.9  
Noise: 0.2

Peak table for sample 8 : DTE-21 Lib 1:14

Peak	Size [bp]	Conc. [pg/ $\mu$ l]	Molarity [pmol/l]	Observations
1	35	125.00	5,411.3	Lower Marker
2	434	1,055.91	3,688.3	
3	443	1,246.49	4,260.8	
4	10,380	75.00	10.9	Upper Marker

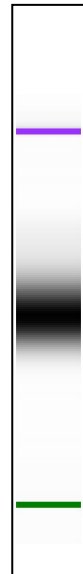
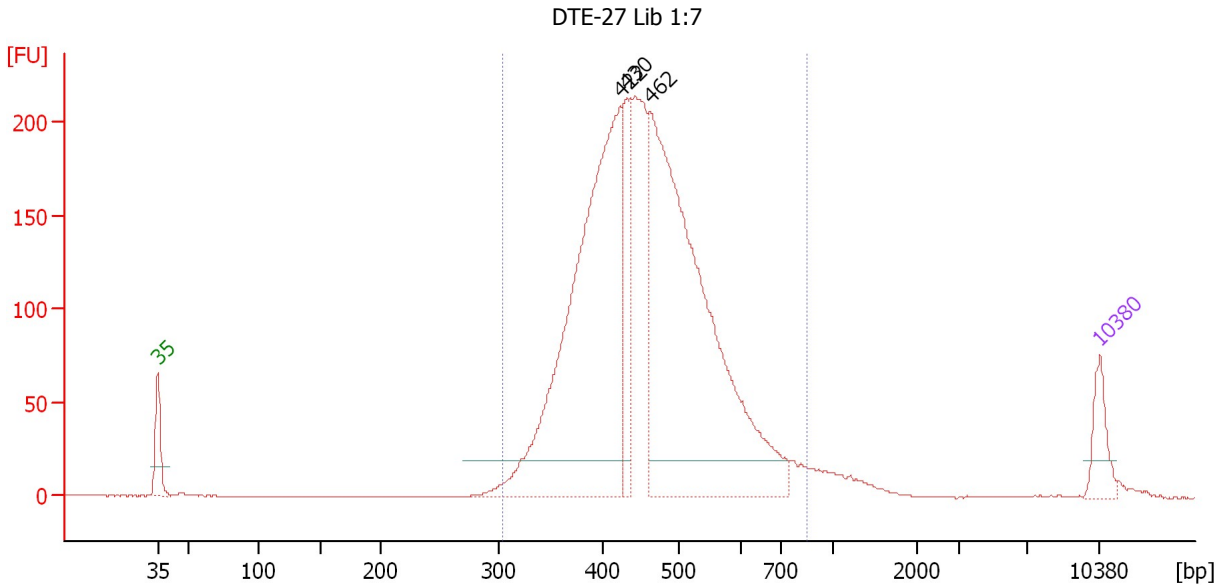
Region table for sample 8 : DTE-21 Lib 1:14

From [bp]	To [bp]	Average Size [bp]	Molarity [pmol/l]	Conc. [pg/ $\mu$ l]	Corr. Area	% of Total	Size distribution in CV [%]	Color
319	778	458	7,881.6	2,305.25	2,761.9	94	16.4	Blue

Assay Class: High Sensitivity DNA Assay  
 Data Path: C:\...ents and Settings\Bioanalyzer\2012-11-13\2012-11-13\_007.xad

Created: 11/13/2012 4:06:51 PM  
 Modified: 11/13/2012 4:51:46 PM

**Electropherogram Summary Continued ...**



**Setpoint Deviations for sample 9 : DTE-27 Lib 1:7**

Height Threshold [FU] : 20

**Overall Results for sample 9 : DTE-27 Lib 1:7**

Number of peaks found: 3                      Corr. Area 1: 2,962.0  
 Noise: 0.3

**Peak table for sample 9 : DTE-27 Lib 1:7**

Peak	Size [bp]	Conc. [pg/µl]	Molarity [pmol/l]	Observations
1	35	125.00	5,411.3	Lower Marker
2	422	1,564.12	5,620.9	
3	430	241.60	850.7	
4	462	1,771.34	5,815.1	
5	10,380	75.00	10.9	Upper Marker

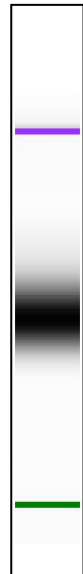
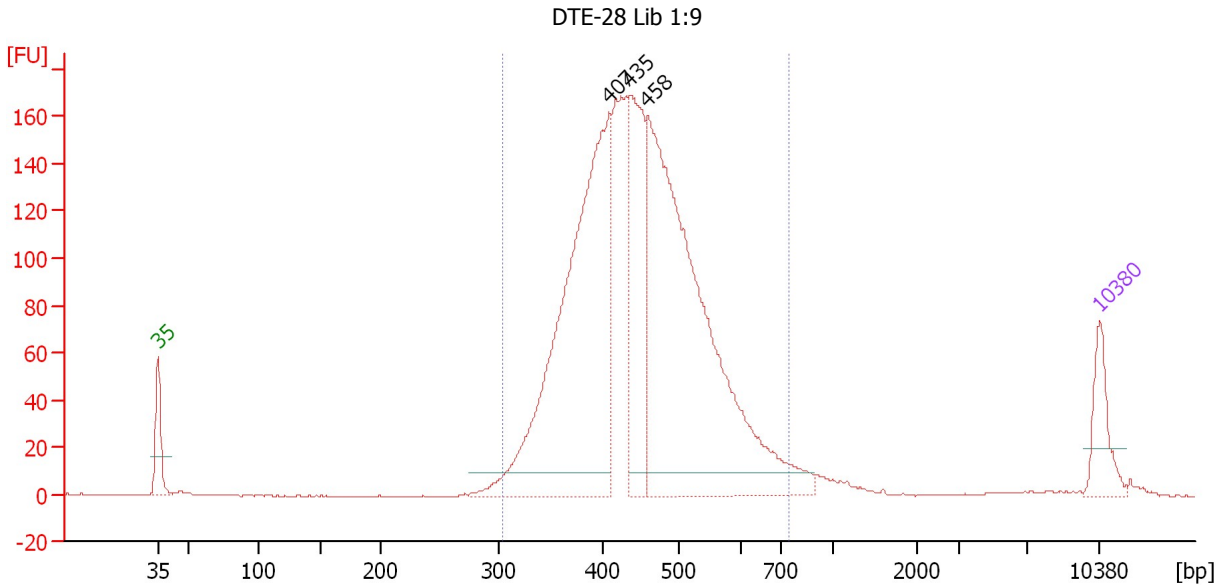
**Region table for sample 9 : DTE-27 Lib 1:7**

From [bp]	To [bp]	Average Size [bp]	Molarity [pmol/l]	Conc. [pg/µl]	Corr. Area	% of Total	Size distribution in CV [%]	Color
304	855	462	13,905.3	4,077.69	2,962.0	96	18.4	Blue

Assay Class: High Sensitivity DNA Assay  
 Data Path: C:\...ents and Settings\Bioanalyzer\2012-11-13\2012-11-13\_007.xad

Created: 11/13/2012 4:06:51 PM  
 Modified: 11/13/2012 4:51:46 PM

**Electropherogram Summary Continued ...**



**Setpoint Deviations for sample 10 : DTE-28 Lib 1:9**

Height Threshold [FU] : 10

**Overall Results for sample 10 : DTE-28 Lib 1:9**

Number of peaks found: 3                      Corr. Area 1: 2,363.8  
 Noise: 0.2

**Peak table for sample 10 : DTE-28 Lib 1:9**

Peak	Size [bp]	Conc. [pg/µl]	Molarity [pmol/l]	Observations
1	35	125.00	5,411.3	Lower Marker
2	407	1,103.58	4,111.5	
3	435	355.02	1,237.6	
4	458	1,294.53	4,280.4	
5	10,380	75.00	10.9	Upper Marker

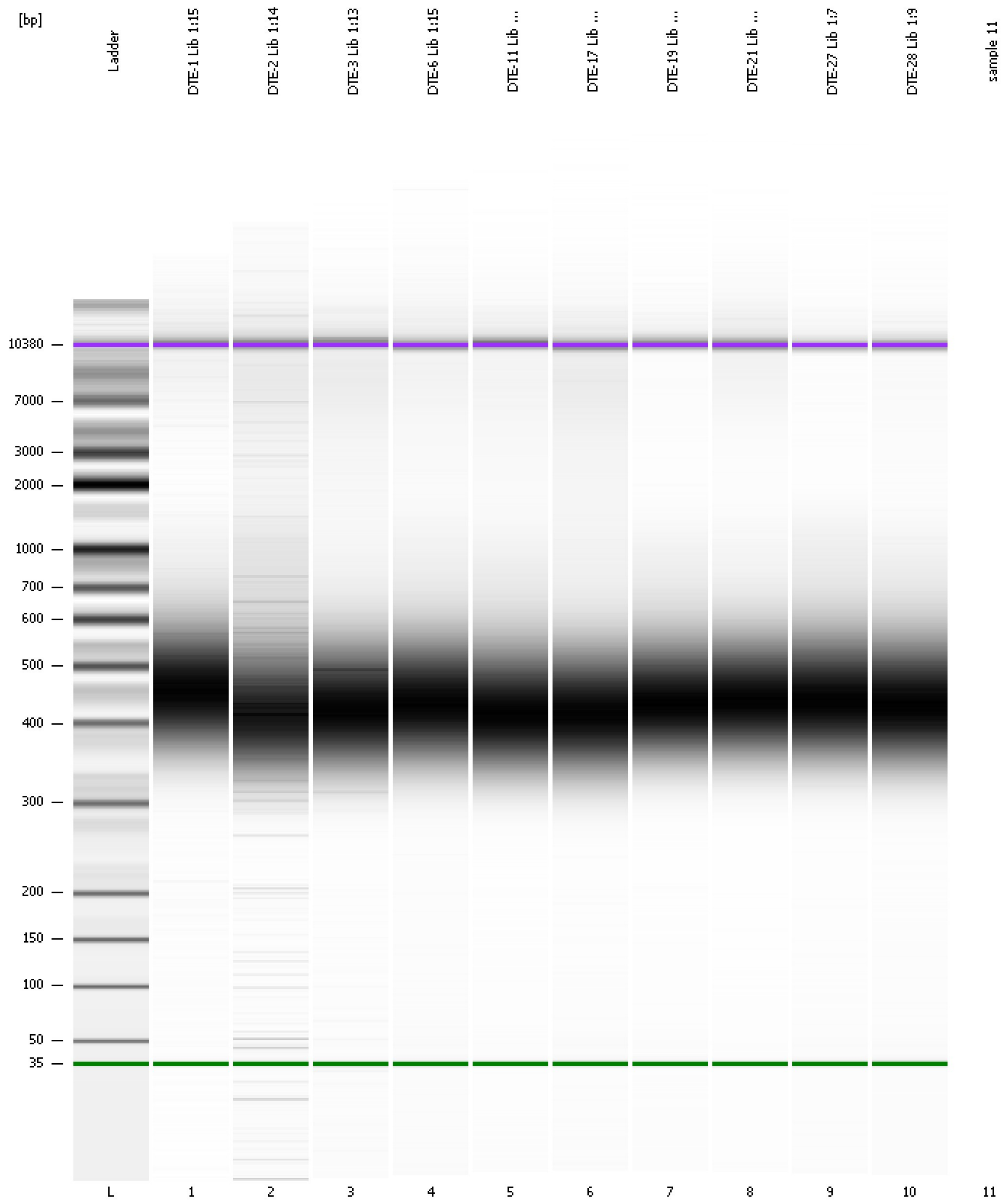
**Region table for sample 10 : DTE-28 Lib 1:9**

From [bp]	To [bp]	Average Size [bp]	Molarity [pmol/l]	Conc. [pg/µl]	Corr. Area	% of Total	Size distribution in CV [%]	Color
303	748	451	10,742.7	3,086.97	2,363.8	95	17.2	Blue

Assay Class: High Sensitivity DNA Assay  
Data Path: C:\...ents and Settings\Bioanalyzer\2012-11-13\2012-11-13\_007.xad

Created: 11/13/2012 4:06:51 PM  
Modified: 11/13/2012 4:51:46 PM

**Gel Image**



Assay Class: High Sensitivity DNA Assay  
Data Path: C:\...ents and Settings\Bioanalyzer\2012-11-13\2012-11-13\_007.xad

Created: 11/13/2012 4:06:51 PM  
Modified: 11/13/2012 4:51:46 PM

**Invalid Samples**

Sample 11 has not been run, no results available.



Assay Class: High Sensitivity DNA Assay  
 Data Path: C:\...ents and Settings\Bioanalyzer\2012-11-13\2012-11-13\_007.xad

Created: 11/13/2012 4:06:51 PM  
 Modified: 11/13/2012 4:51:46 PM

**Run Logbook**

Description	Number	Source	Category	Sub Category	Time	Time Zone	User	Host
Run ended on port 1 (Number of wells acquired: 11)		Instrument	Run		11/13/2012 4:45:17 PM	(GMT --08:00) Pacific Standard Time	UC Davis	D8XSMGH1
Run started on port 1 (File: C:\Documents and Settings\Bioanalyzer\2012-11-13\2012-11-13_007.xad)		Instrument	Run		11/13/2012 4:06:56 PM	(GMT --08:00) Pacific Standard Time	UC Davis	D8XSMGH1
Product Number : G2938B		Instrument	Run		11/13/2012 4:06:56 PM	(GMT --08:00) Pacific Standard Time	UC Davis	D8XSMGH1
Name :		Instrument	Run		11/13/2012 4:06:56 PM	(GMT --08:00) Pacific Standard Time	UC Davis	D8XSMGH1
Vendor : Agilent Technologies		Instrument	Run		11/13/2012 4:06:56 PM	(GMT --08:00) Pacific Standard Time	UC Davis	D8XSMGH1
Serial# : DE13701086		Instrument	Run		11/13/2012 4:06:56 PM	(GMT --08:00) Pacific Standard Time	UC Davis	D8XSMGH1
Firmware : C.01.069		Instrument	Run		11/13/2012 4:06:56 PM	(GMT --08:00) Pacific Standard Time	UC Davis	D8XSMGH1
Cartridge : Electrode		Instrument	Run		11/13/2012 4:06:56 PM	(GMT --08:00) Pacific Standard Time	UC Davis	D8XSMGH1