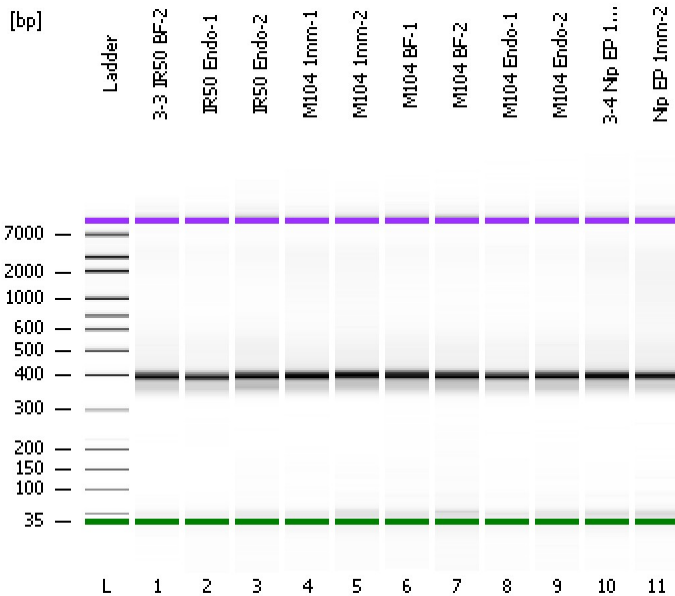


Assay Class: High Sensitivity DNA Assay
Data Path: C:\...ents and Settings\Bioanalyzer\2012-11-14\2012-11-14_001.xad

Created: 11/14/2012 9:17:04 AM
Modified: 11/14/2012 9:59:48 AM

Electrophoresis File Run Summary



Instrument Information:

Instrument Name: DE13701086 Firmware: C.01.069
Serial#: DE13701086 Type: G2938B

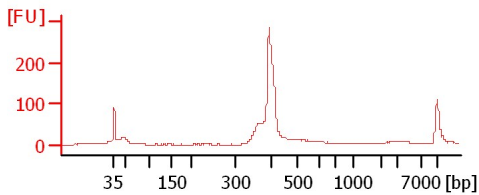
Assay Information:

Assay Origin Path: C:\Program Files\Agilent\2100 bioanalyzer\2100 expert\assays\dsDNA\High Sensitivity DNA.xsy
Assay Class: High Sensitivity DNA Assay
Version: 1.03
Assay Comments: Copyright © 2003-2010 Agilent Technologies

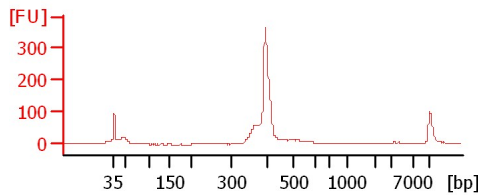
Chip Information:

Chip Lot #:
Reagent Kit Lot #:
Chip Comments:

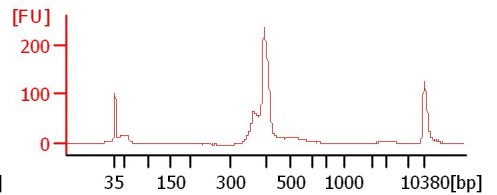
3-3 IR50 BF-2



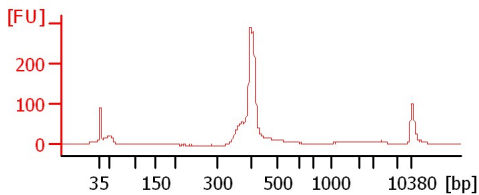
IR50 Endo-1



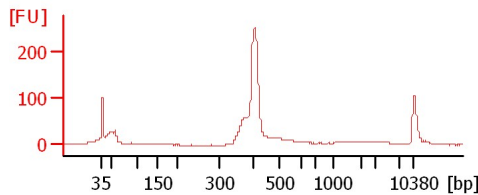
IR50 Endo-2



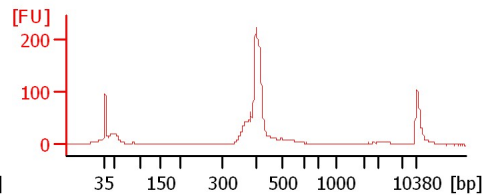
M104 1mm-1



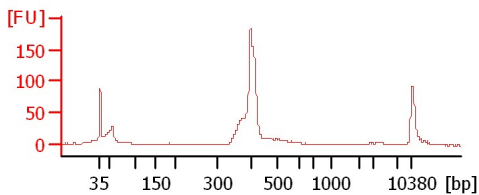
M104 1mm-2



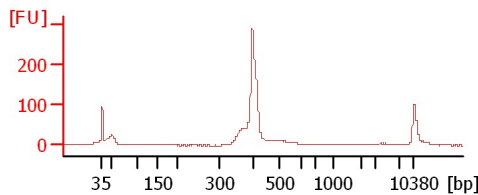
M104 BF-1



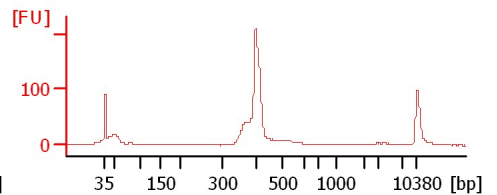
M104 BF-2



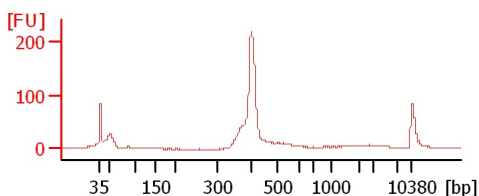
M104 Endo-1



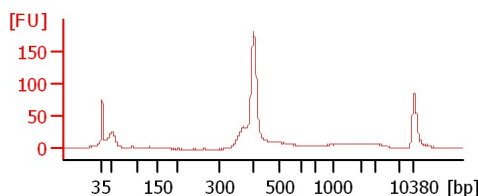
M104 Endo-2



3-4 Nip EP 1mm-1



Nip EP 1mm-2



Assay Class: High Sensitivity DNA Assay
 Data Path: C:\...ents and Settings\Bioanalyzer\2012-11-14\2012-11-14_001.xad

Created: 11/14/2012 9:17:04 AM
 Modified: 11/14/2012 9:59:48 AM

Electrophoresis File Run Summary (Chip Summary)

Sample Name	Sample Comment	Rest. Digest	Status	Observation	Result Label	Result Color
3-3 IR50 BF-2		<input type="checkbox"/>	✓			
IR50 Endo-1		<input type="checkbox"/>	✓			
IR50 Endo-2		<input type="checkbox"/>	✓			
M104 1mm-1		<input type="checkbox"/>	✓			
M104 1mm-2		<input type="checkbox"/>	✓			
M104 BF-1		<input type="checkbox"/>	✓			
M104 BF-2		<input type="checkbox"/>	✓			
M104 Endo-1		<input type="checkbox"/>	✓			
M104 Endo-2		<input type="checkbox"/>	✓			
3-4 Nip EP 1mm-1		<input type="checkbox"/>	✓			
Nip EP 1mm-2		<input type="checkbox"/>	✓			
Ladder		<input type="checkbox"/>	✓			

Chip Lot #

Reagent Kit Lot #

Chip Comments :

Assay Class: High Sensitivity DNA Assay
Data Path: C:\...ents and Settings\Bioanalyzer\2012-11-14\2012-11-14_001.xad

Created: 11/14/2012 9:17:04 AM
Modified: 11/14/2012 9:59:48 AM

Electrophoresis Assay Details

General Analysis Settings

Number of Available Sample and Ladder Wells (Max.) : 12
Minimum Visible Range [s] : 32
Maximum Visible Range [s] : 138
Start Analysis Time Range [s] : 33
End Analysis Time Range [s] : 137.5
Ladder Concentration [pg/μl] : 1950
Uses Standard Area for Ladder Fragments
Lower Marker Concentration [pg/μl] : 125
Upper Marker Concentration [pg/μl] : 75
Used Upper Marker for Quantitation
Standard Curve Fit is Point to Point
Show Data Aligned to Lower and Upper Marker

Integrator Settings

Integration Start Time [s] : 33.05
Integration End Time [s] : 137
Slope Threshold : 0.8
Height Threshold [FU] : 5
Area Threshold : 0.1
Width Threshold [s] : 0.6
Baseline Plateau [s] : 0.5

Filter Settings

Filter Width [s] : 0.5
Polynomial Order : 4

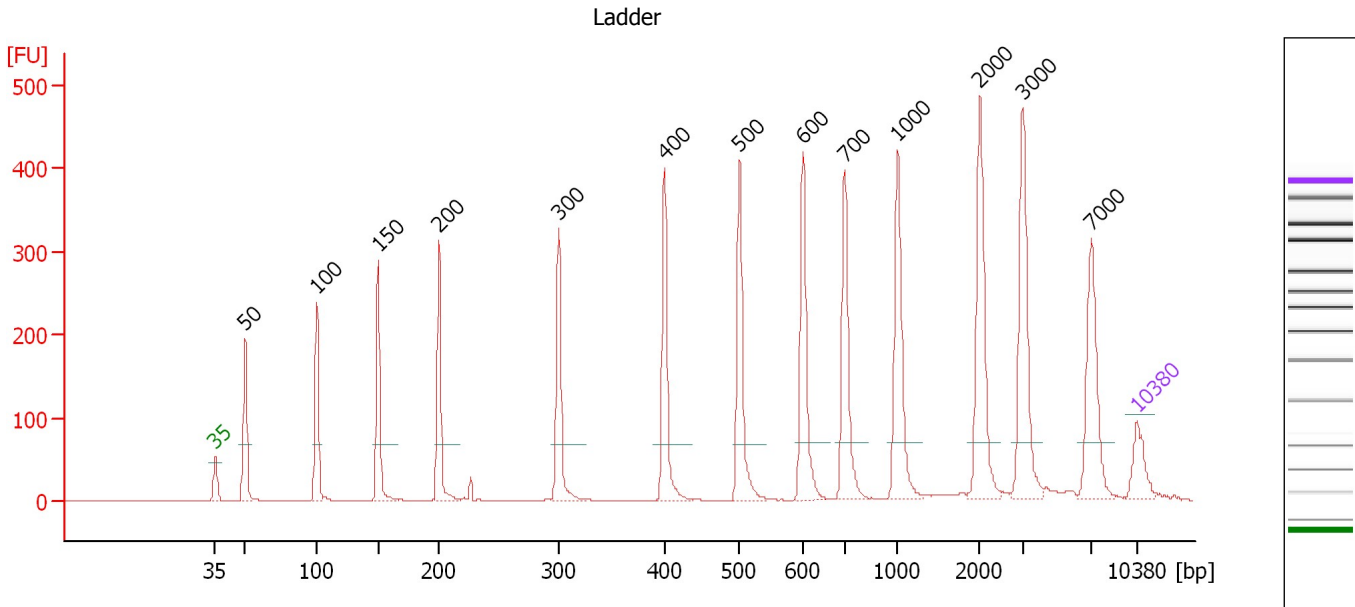
Ladder

Ladder Peak	Size	Area
1	35	160
2	50	210
3	100	208
4	150	221
5	200	242
6	300	270
7	400	305
8	500	306
9	600	336
10	700	321
11	1000	366
12	2000	413
13	3000	411
14	7000	400
15	10380	214

Assay Class: High Sensitivity DNA Assay
 Data Path: C:\...ents and Settings\Bioanalyzer\2012-11-14\2012-11-14_001.xad

Created: 11/14/2012 9:17:04 AM
 Modified: 11/14/2012 9:59:48 AM

Electropherogram Summary



Overall Results for Ladder

Noise: 0.1

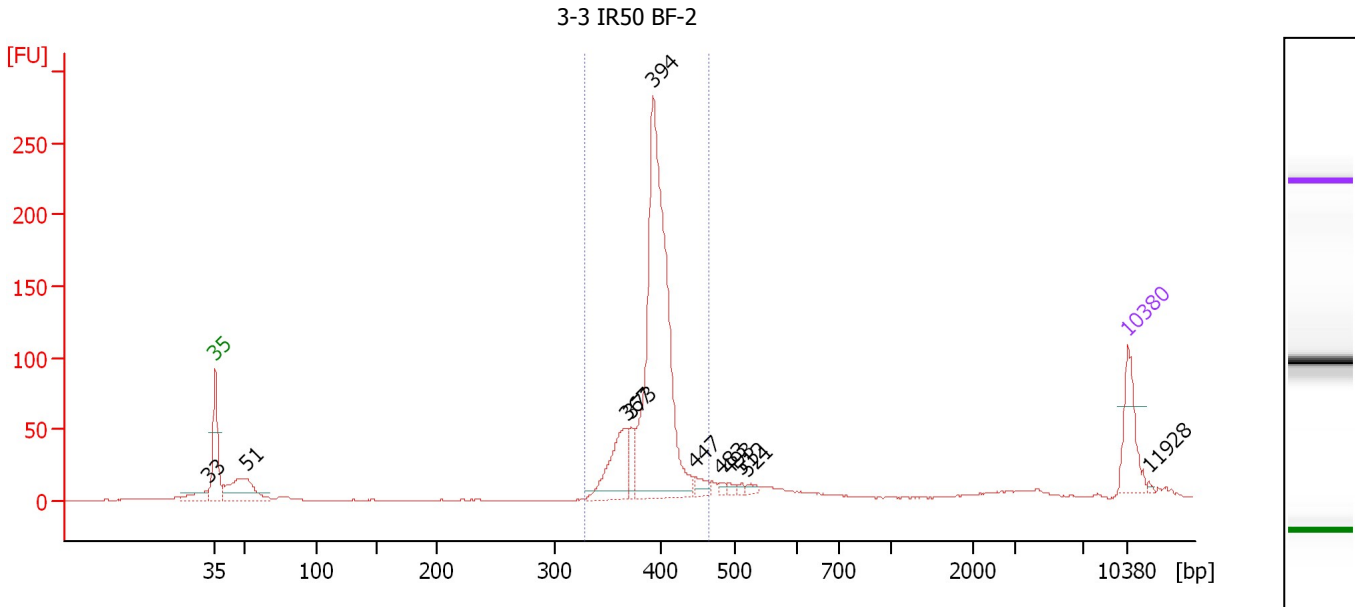
Peak table for Ladder

Peak	Size [bp]	Conc. [pg/μl]	Molarity [pmol/l]	Observations
1	35	125.00	5,411.3	Lower Marker
2	50	150.00	4,545.5	Ladder Peak
3	100	150.00	2,272.7	Ladder Peak
4	150	150.00	1,515.2	Ladder Peak
5	200	150.00	1,136.4	Ladder Peak
6	300	150.00	757.6	Ladder Peak
7	400	150.00	568.2	Ladder Peak
8	500	150.00	454.5	Ladder Peak
9	600	150.00	378.8	Ladder Peak
10	700	150.00	324.7	Ladder Peak
11	1,000	150.00	227.3	Ladder Peak
12	2,000	150.00	113.6	Ladder Peak
13	3,000	150.00	75.8	Ladder Peak
14	7,000	150.00	32.5	Ladder Peak
15	10,380	75.00	10.9	Upper Marker

Assay Class: High Sensitivity DNA Assay
 Data Path: C:\...ents and Settings\Bioanalyzer\2012-11-14\2012-11-14_001.xad

Created: 11/14/2012 9:17:04 AM
 Modified: 11/14/2012 9:59:48 AM

Electropherogram Summary Continued ...



Overall Results for sample 1 : 3-3 IR50 BF-2

Number of peaks found: 11 Corr. Area 1: 856.2
 Noise: 0.3

Peak table for sample 1 : 3-3 IR50 BF-2

Peak	Size [bp]	Conc. [pg/μl]	Molarity [pmol/l]	Observations
1	33	0.00	0.0	
2	35	125.00	5,411.3	Lower Marker
3	51	150.19	4,499.1	
4	367	135.18	557.3	
5	373	43.77	178.0	
6	394	775.38	2,985.5	
7	447	22.97	77.9	
8	483	7.37	23.1	
9	493	7.85	24.1	
10	512	5.90	17.5	
11	521	7.82	22.7	
12	10,380	75.00	10.9	Upper Marker
13	11,928	0.00	0.0	

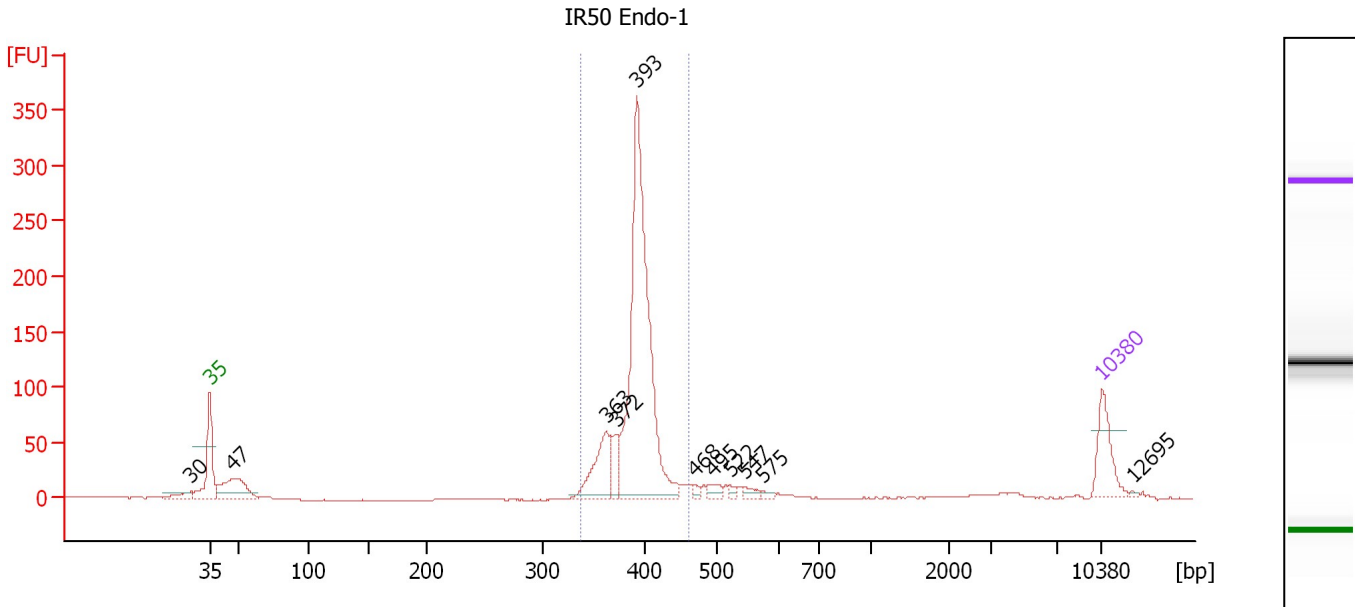
Region table for sample 1 : 3-3 IR50 BF-2

From [bp]	To [bp]	Average Size [bp]	Molarity [pmol/l]	Conc. [pg/μl]	Corr. Area	% of Total	Size distribution in CV [%]	Color
328	466	395	3,783.2	983.73	856.2	76	5.4	Blue

Assay Class: High Sensitivity DNA Assay
 Data Path: C:\...ents and Settings\Bioanalyzer\2012-11-14\2012-11-14_001.xad

Created: 11/14/2012 9:17:04 AM
 Modified: 11/14/2012 9:59:48 AM

Electropherogram Summary Continued ...



Overall Results for sample 2 : IR50 Endo-1

Number of peaks found: 11 Corr. Area 1: 959.5
 Noise: 0.2

Peak table for sample 2 : IR50 Endo-1

Peak	Size [bp]	Conc. [pg/μl]	Molarity [pmol/l]	Observations
1	30	0.00	0.0	
2	35	125.00	5,411.3	Lower Marker
3	47	150.78	4,842.2	
4	363	141.76	591.5	
5	372	50.22	204.3	
6	393	785.70	3,030.4	
7	468	10.94	35.4	
8	495	20.55	62.9	
9	522	8.46	24.6	
10	547	15.35	42.5	
11	575	7.55	19.9	
12	10,380	75.00	10.9	Upper Marker
13	12,695	0.00	0.0	

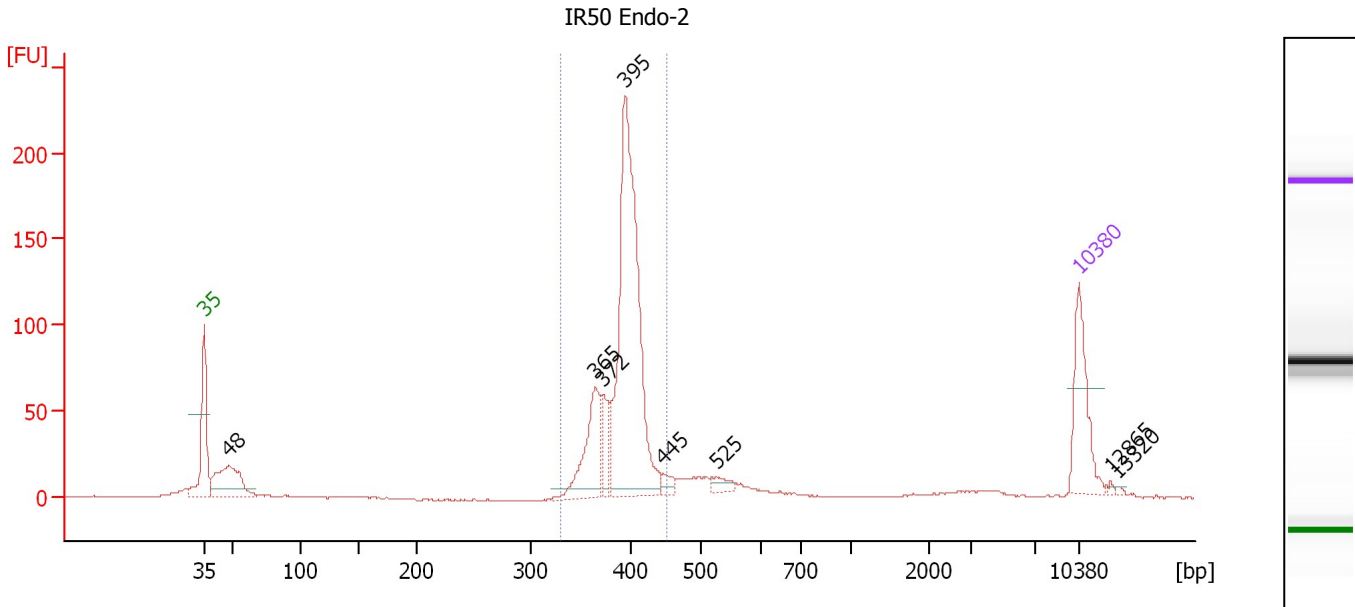
Region table for sample 2 : IR50 Endo-1

From [bp]	To [bp]	Average Size [bp]	Molarity [pmol/l]	Conc. [pg/μl]	Corr. Area	% of Total	Size distribution in CV [%]	Color
337	462	392	3,755.0	970.35	959.5	79	5.0	Blue

Assay Class: High Sensitivity DNA Assay
 Data Path: C:\...ents and Settings\Bioanalyzer\2012-11-14\2012-11-14_001.xad

Created: 11/14/2012 9:17:04 AM
 Modified: 11/14/2012 9:59:48 AM

Electropherogram Summary Continued ...



Overall Results for sample 3 : IR50 Endo-2

Number of peaks found: 8 Corr. Area 1: 757.3
 Noise: 0.3

Peak table for sample 3 : IR50 Endo-2

Peak	Size [bp]	Conc. [pg/μl]	Molarity [pmol/l]	Observations
1	35	125.00	5,411.3	Lower Marker
2	48	123.88	3,888.9	
3	365	112.94	469.1	
4	372	41.14	167.4	
5	395	456.82	1,751.7	
6	445	12.43	42.3	
7	525	14.08	40.6	
8	10,380	75.00	10.9	Upper Marker
9	12,865	0.00	0.0	
10	13,320	0.00	0.0	

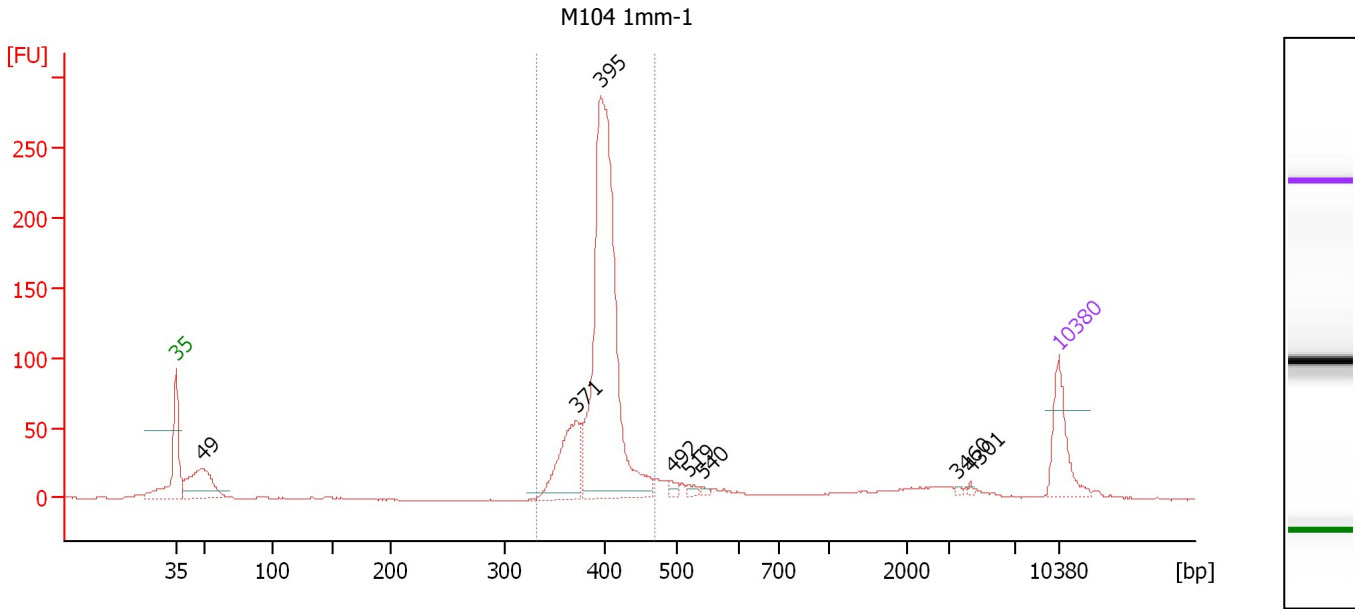
Region table for sample 3 : IR50 Endo-2

From [bp]	To [bp]	Average Size [bp]	Molarity [pmol/l]	Conc. [pg/μl]	Corr. Area	% of Total	Size distribution in CV [%]	Color
330	452	393	2,406.3	623.18	757.3	74	5.1	Blue

Assay Class: High Sensitivity DNA Assay
 Data Path: C:\...ents and Settings\Bioanalyzer\2012-11-14\2012-11-14_001.xad

Created: 11/14/2012 9:17:04 AM
 Modified: 11/14/2012 9:59:48 AM

Electropherogram Summary Continued ...



Overall Results for sample 4 : M104 1mm-1

Number of peaks found: 8 Corr. Area 1: 953.3
 Noise: 0.3

Peak table for sample 4 : M104 1mm-1

Peak	Size [bp]	Conc. [pg/μl]	Molarity [pmol/l]	Observations
1	35	125.00	5,411.3	Lower Marker
2	49	156.73	4,889.9	
3	371	148.30	605.9	
4	395	770.82	2,958.5	
5	492	10.31	31.8	
6	519	8.51	24.9	
7	540	4.91	13.8	
8	3,460	2.39	1.0	
9	4,301	2.32	0.8	
10	10,380	75.00	10.9	Upper Marker

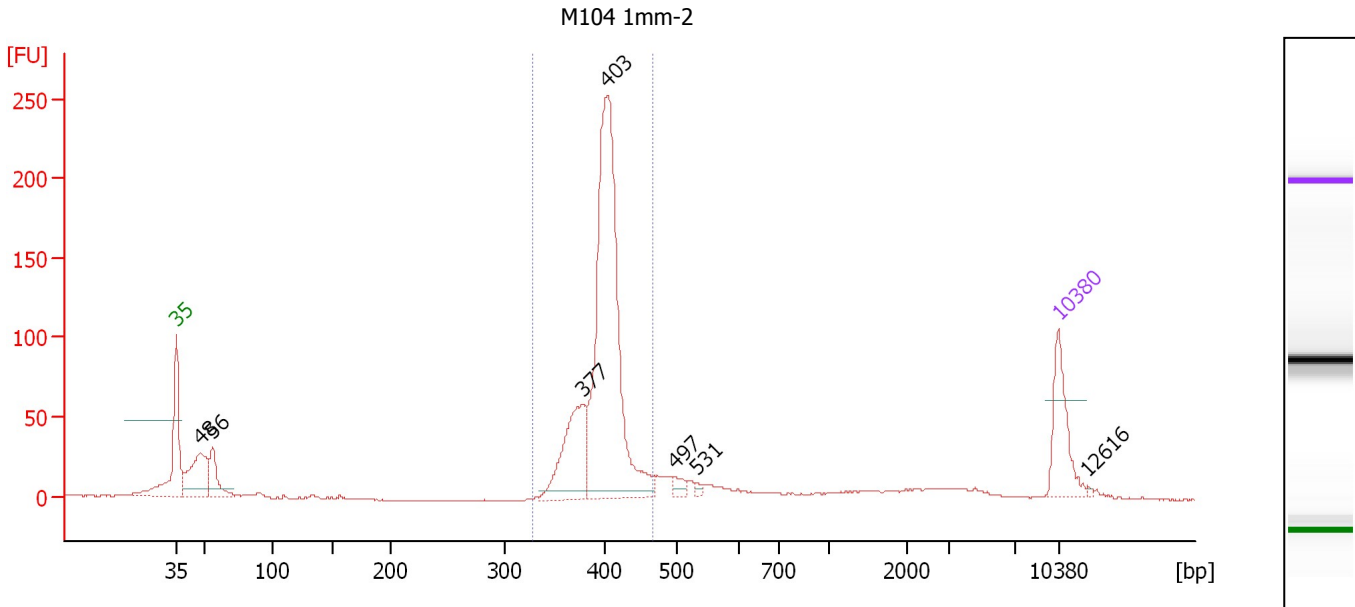
Region table for sample 4 : M104 1mm-1

From [bp]	To [bp]	Average Size [bp]	Molarity [pmol/l]	Conc. [pg/μl]	Corr. Area	% of Total	Size distribution in CV [%]	Color
332	469	397	3,563.3	930.79	953.3	74	5.4	Blue

Assay Class: High Sensitivity DNA Assay
 Data Path: C:\...ents and Settings\Bioanalyzer\2012-11-14\2012-11-14_001.xad

Created: 11/14/2012 9:17:04 AM
 Modified: 11/14/2012 9:59:48 AM

Electropherogram Summary Continued ...



Overall Results for sample 5 : M104 1mm-2

Number of peaks found: 7 Corr. Area 1: 851.5
 Noise: 0.4

Peak table for sample 5 : M104 1mm-2

Peak	Size [bp]	Conc. [pg/μl]	Molarity [pmol/l]	Observations
1	35	125.00	5,411.3	Lower Marker
2	48	144.36	4,594.8	
3	56	74.12	2,005.0	
4	377	162.99	655.8	
5	403	628.36	2,363.8	
6	497	15.31	46.7	
7	531	4.95	14.1	
8	10,380	75.00	10.9	Upper Marker
9	12,616	0.00	0.0	

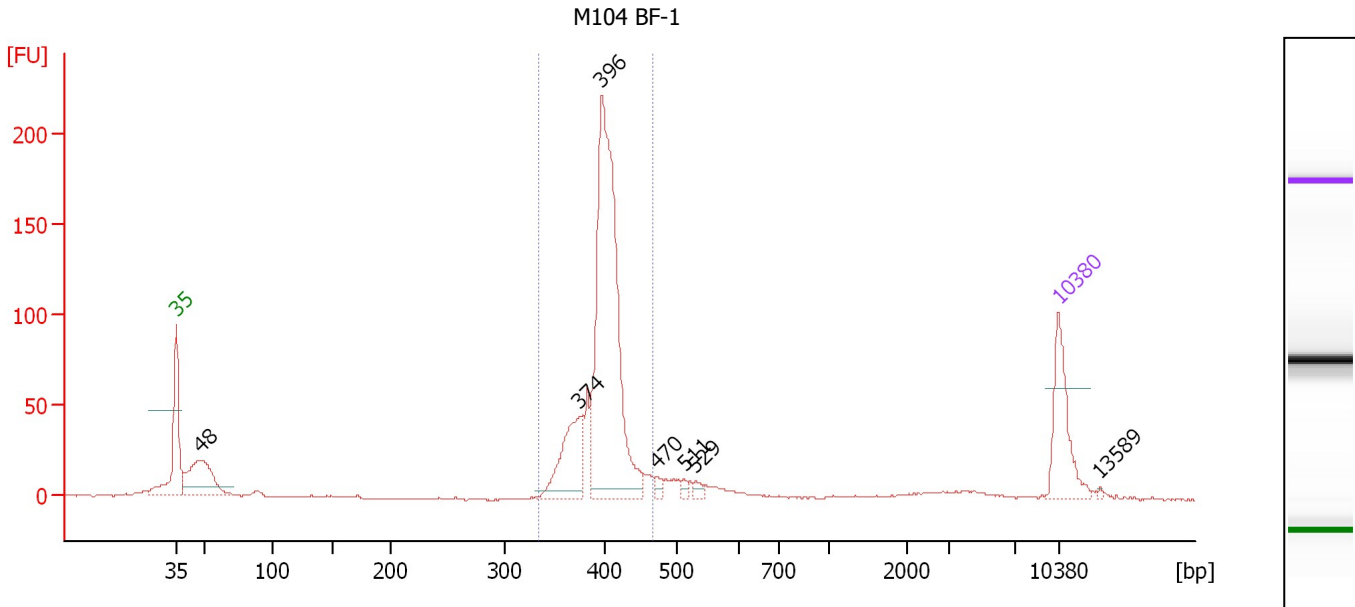
Region table for sample 5 : M104 1mm-2

From [bp]	To [bp]	Average Size [bp]	Molarity [pmol/l]	Conc. [pg/μl]	Corr. Area	% of Total	Size distribution in CV [%]	Color
328	466	398	3,002.9	787.36	851.5	70	5.3	Blue

Assay Class: High Sensitivity DNA Assay
 Data Path: C:\...ents and Settings\Bioanalyzer\2012-11-14\2012-11-14_001.xad

Created: 11/14/2012 9:17:04 AM
 Modified: 11/14/2012 9:59:48 AM

Electropherogram Summary Continued ...



Overall Results for sample 6 : M104 BF-1

Number of peaks found: 7 Corr. Area 1: 736.6
 Noise: 0.3

Peak table for sample 6 : M104 BF-1

Peak	Size [bp]	Conc. [pg/μl]	Molarity [pmol/l]	Observations
1	35	125.00	5,411.3	Lower Marker
2	48	146.76	4,632.2	
3	374	120.36	487.2	
4	396	524.25	2,005.7	
5	470	8.74	28.2	
6	511	6.43	19.1	
7	529	7.82	22.4	
8	10,380	75.00	10.9	Upper Marker
9	13,589	0.00	0.0	

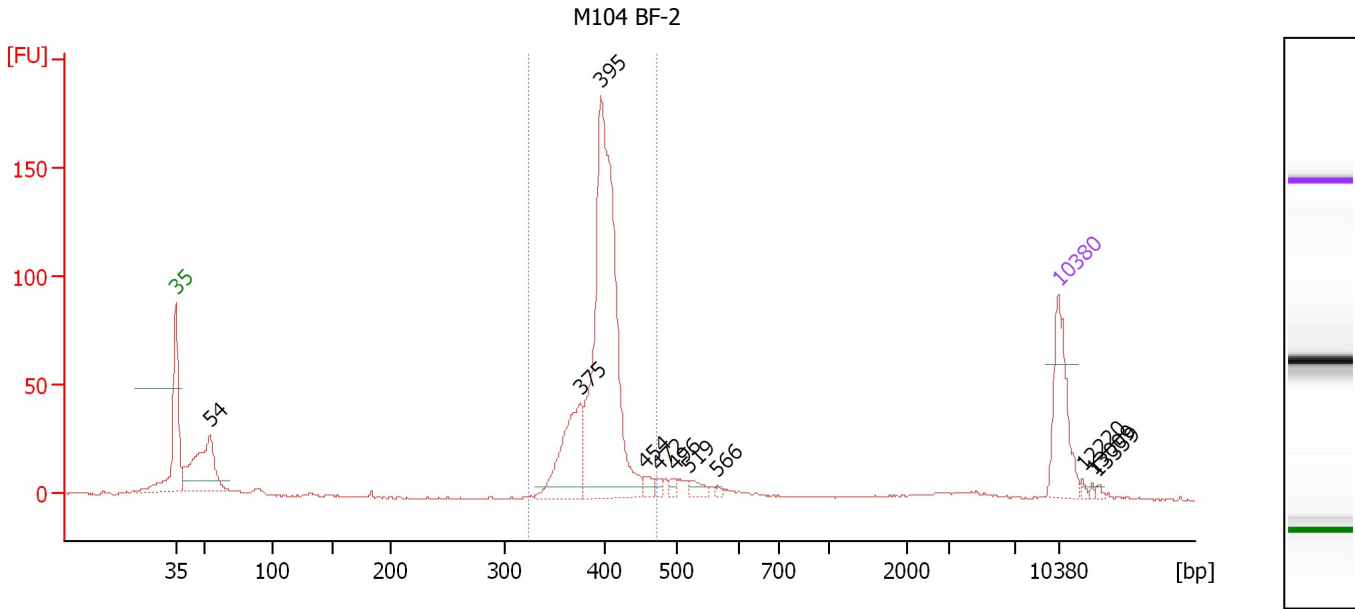
Region table for sample 6 : M104 BF-1

From [bp]	To [bp]	Average Size [bp]	Molarity [pmol/l]	Conc. [pg/μl]	Corr. Area	% of Total	Size distribution in CV [%]	Color
333	466	398	2,604.7	683.12	736.6	74	5.3	Blue

Assay Class: High Sensitivity DNA Assay
 Data Path: C:\...ents and Settings\Bioanalyzer\2012-11-14\2012-11-14_001.xad

Created: 11/14/2012 9:17:04 AM
 Modified: 11/14/2012 9:59:48 AM

Electropherogram Summary Continued ...



Overall Results for sample 7 : M104 BF-2

Number of peaks found: 11 Corr. Area 1: 603.3
 Noise: 0.3

Peak table for sample 7 : M104 BF-2

Peak	Size [bp]	Conc. [pg/μl]	Molarity [pmol/l]	Observations
1	35	125.00	5,411.3	Lower Marker
2	54	167.24	4,689.8	
3	375	125.13	505.5	
4	395	503.87	1,931.2	
5	454	11.90	39.8	
6	472	7.24	23.2	
7	496	6.85	20.9	
8	519	12.42	36.3	
9	566	3.05	8.2	
10	10,380	75.00	10.9	Upper Marker
11	12,220	0.00	0.0	
12	13,009	0.00	0.0	
13	13,359	0.00	0.0	

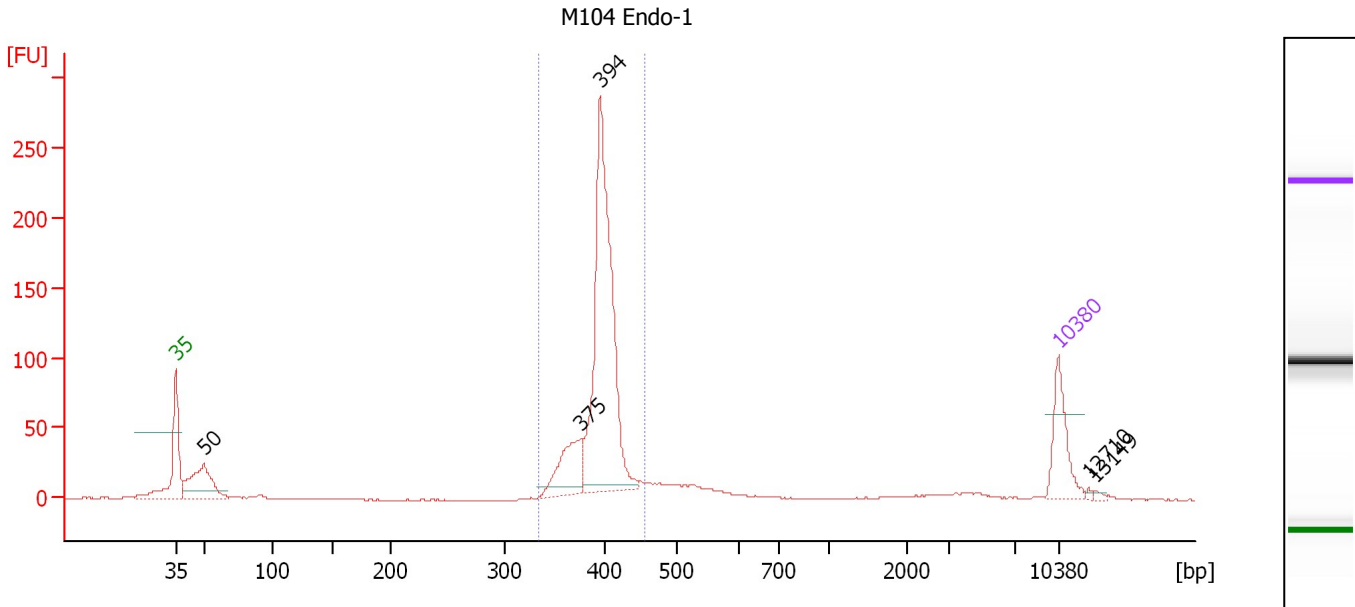
Region table for sample 7 : M104 BF-2

From [bp]	To [bp]	Average Size [bp]	Molarity [pmol/l]	Conc. [pg/μl]	Corr. Area	% of Total	Size distribution in CV [%]	Color
325	470	396	2,425.0	632.77	603.3	72	5.5	Blue

Assay Class: High Sensitivity DNA Assay
 Data Path: C:\...ents and Settings\Bioanalyzer\2012-11-14\2012-11-14_001.xad

Created: 11/14/2012 9:17:04 AM
 Modified: 11/14/2012 9:59:48 AM

Electropherogram Summary Continued ...



Overall Results for sample 8 : M104 Endo-1

Number of peaks found: 5 Corr. Area 1: 759.1
 Noise: 0.3

Peak table for sample 8 : M104 Endo-1

Peak	Size [bp]	Conc. [pg/μl]	Molarity [pmol/l]	Observations
1	35	125.00	5,411.3	Lower Marker
2	50	159.49	4,864.2	
3	375	116.26	469.5	
4	394	571.10	2,193.9	
5	10,380	75.00	10.9	Upper Marker
6	12,710	0.00	0.0	
7	13,149	0.00	0.0	

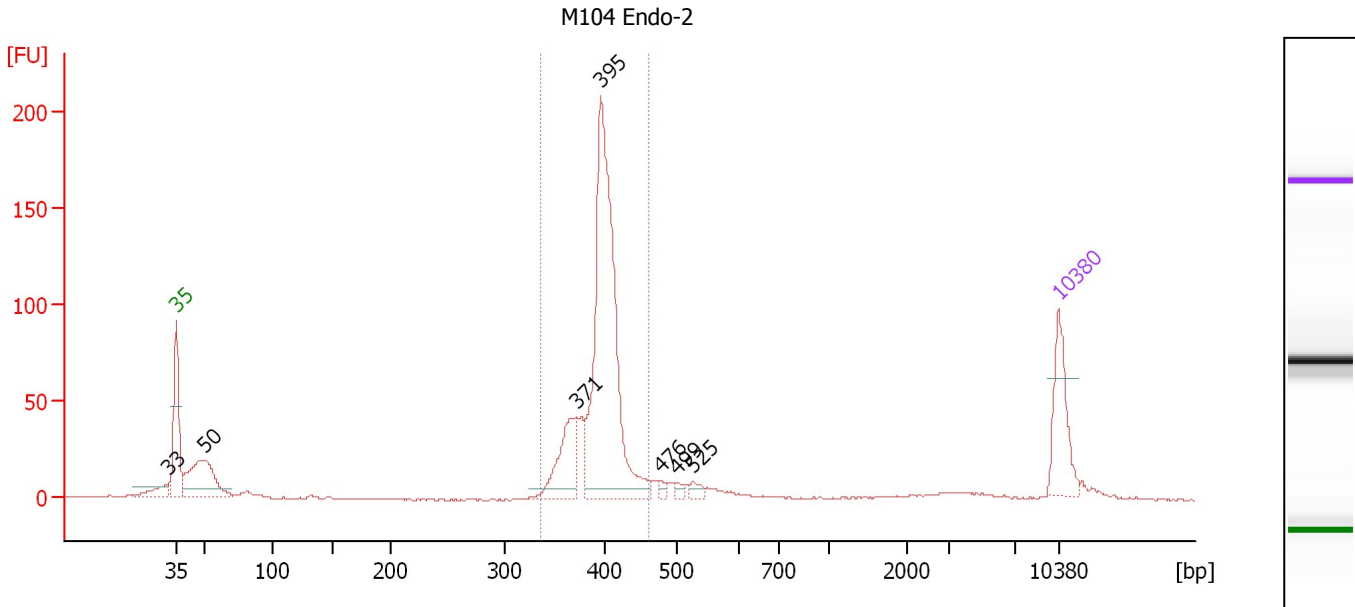
Region table for sample 8 : M104 Endo-1

From [bp]	To [bp]	Average Size [bp]	Molarity [pmol/l]	Conc. [pg/μl]	Corr. Area	% of Total	Size distribution in CV [%]	Color
334	454	395	2,844.5	739.78	759.1	73	4.8	Blue

Assay Class: High Sensitivity DNA Assay
 Data Path: C:\...ents and Settings\Bioanalyzer\2012-11-14\2012-11-14_001.xad

Created: 11/14/2012 9:17:04 AM
 Modified: 11/14/2012 9:59:48 AM

Electropherogram Summary Continued ...



Overall Results for sample 9 : M104 Endo-2

Number of peaks found: 7 Corr. Area 1: 631.3
 Noise: 0.2

Peak table for sample 9 : M104 Endo-2

Peak	Size [bp]	Conc. [pg/μl]	Molarity [pmol/l]	Observations
1	33	0.00	0.0	
2	35	125.00	5,411.3	Lower Marker
3	50	170.11	5,182.2	
4	371	111.02	454.0	
5	395	535.94	2,053.2	
6	476	7.93	25.3	
7	499	8.39	25.5	
8	525	11.73	33.9	
9	10,380	75.00	10.9	Upper Marker

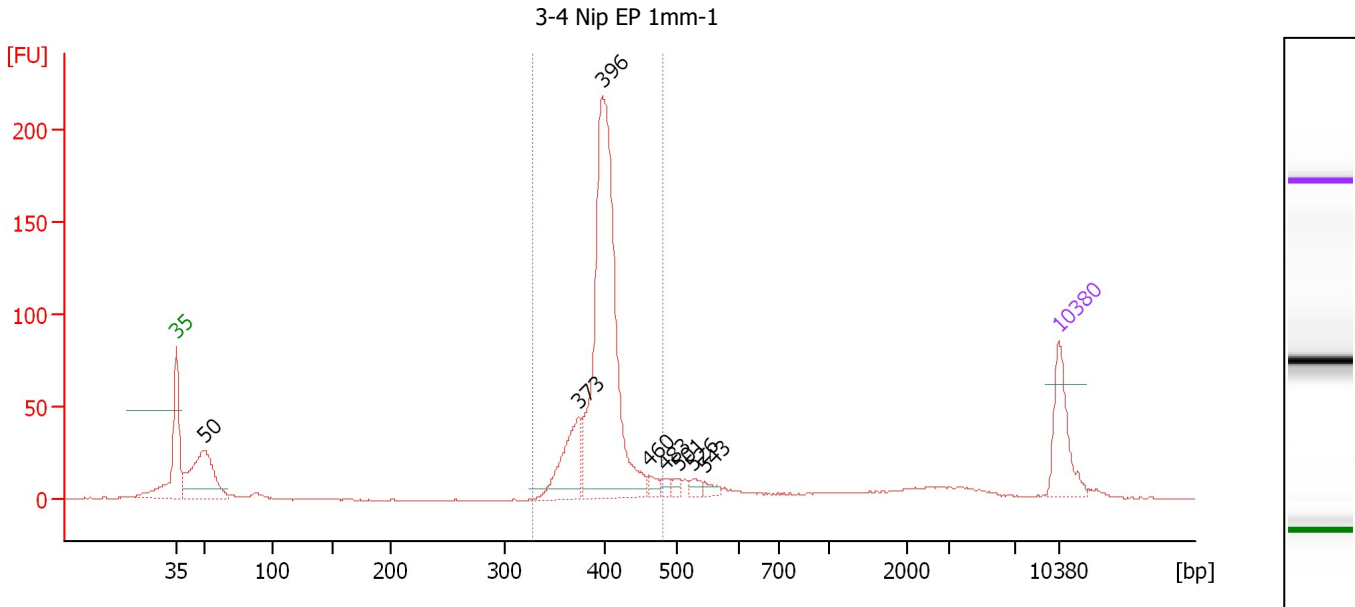
Region table for sample 9 : M104 Endo-2

From [bp]	To [bp]	Average Size [bp]	Molarity [pmol/l]	Conc. [pg/μl]	Corr. Area	% of Total	Size distribution in CV [%]	Color
335	459	395	2,593.4	674.77	631.3	70	5.2	Blue

Assay Class: High Sensitivity DNA Assay
 Data Path: C:\...ents and Settings\Bioanalyzer\2012-11-14\2012-11-14_001.xad

Created: 11/14/2012 9:17:04 AM
 Modified: 11/14/2012 9:59:48 AM

Electropherogram Summary Continued ...



Overall Results for sample 10 : 3-4 Nip EP 1mm-1

Number of peaks found: 8 Corr. Area 1: 705.3
 Noise: 0.3

Peak table for sample 10 : 3-4 Nip EP 1mm-1

Peak	Size [bp]	Conc. [pg/μl]	Molarity [pmol/l]	Observations
1	35	125.00	5,411.3	Lower Marker
2	50	211.23	6,421.3	
3	373	121.66	493.7	
4	396	646.60	2,472.6	
5	460	14.66	48.2	
6	483	10.61	33.3	
7	501	10.14	30.7	
8	526	11.81	34.0	
9	543	10.98	30.6	
10	10,380	75.00	10.9	Upper Marker

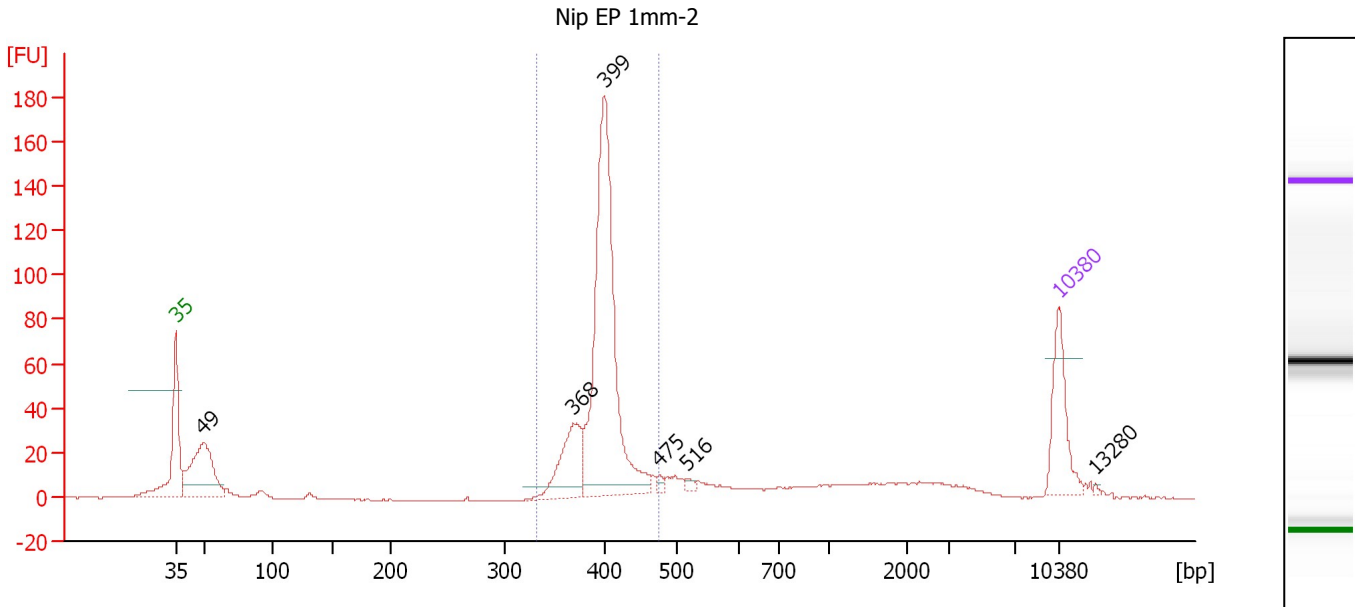
Region table for sample 10 : 3-4 Nip EP 1mm-1

From [bp]	To [bp]	Average Size [bp]	Molarity [pmol/l]	Conc. [pg/μl]	Corr. Area	% of Total	Size distribution in CV [%]	Color
327	481	399	3,032.2	795.77	705.3	68	5.8	Blue

Assay Class: High Sensitivity DNA Assay
 Data Path: C:\...ents and Settings\Bioanalyzer\2012-11-14\2012-11-14_001.xad

Created: 11/14/2012 9:17:04 AM
 Modified: 11/14/2012 9:59:48 AM

Electropherogram Summary Continued ...



Overall Results for sample 11 : Nip EP 1mm-2

Number of peaks found: 6 Corr. Area 1: 529.3
 Noise: 0.3

Peak table for sample 11 : Nip EP 1mm-2

Peak	Size [bp]	Conc. [pg/μl]	Molarity [pmol/l]	Observations
1	35	125.00	5,411.3	Lower Marker
2	49	196.01	6,024.9	
3	368	105.99	436.3	
4	399	494.64	1,878.1	
5	475	6.35	20.2	
6	516	6.79	19.9	
7	10,380	75.00	10.9	Upper Marker
8	13,280	0.00	0.0	

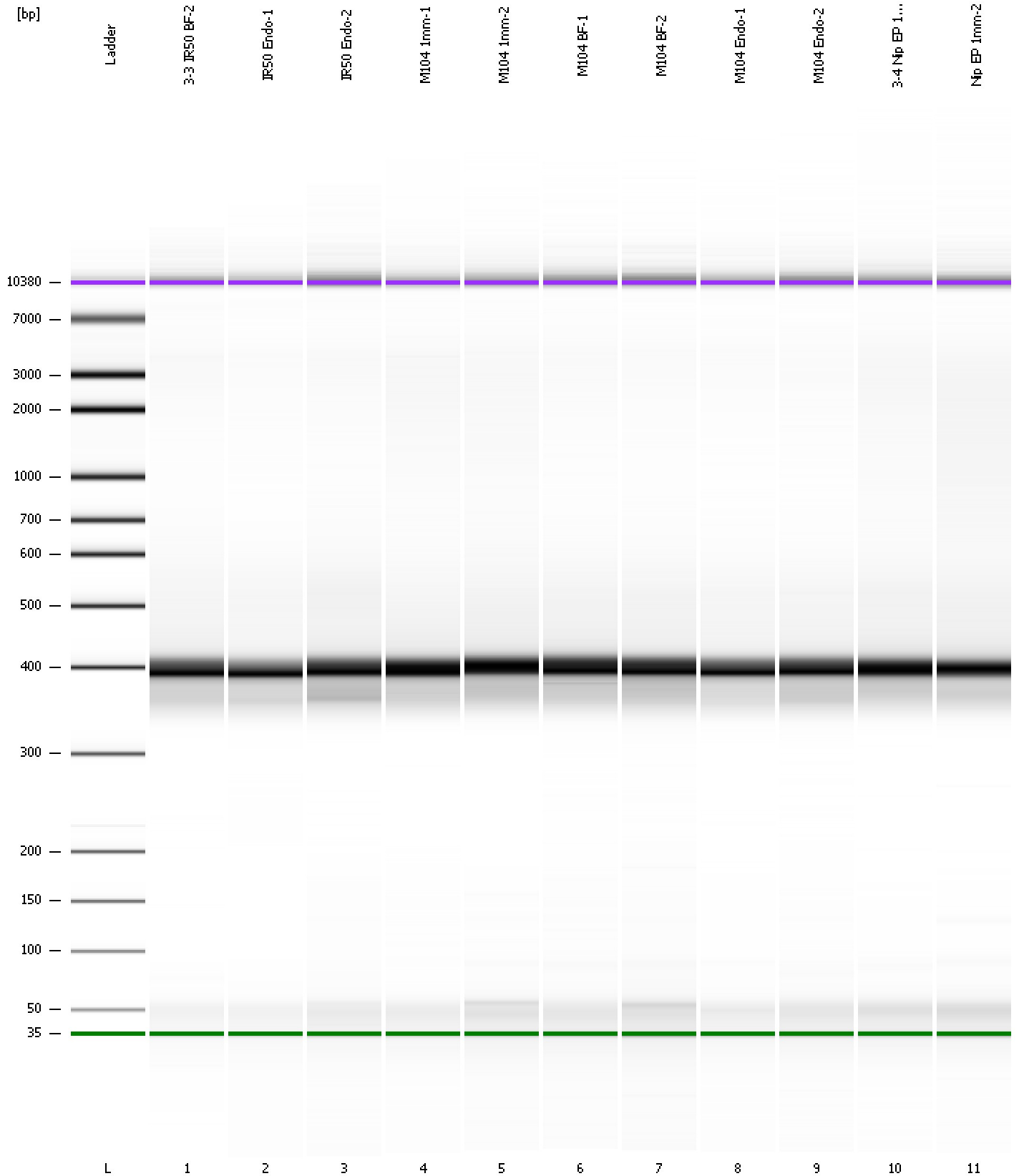
Region table for sample 11 : Nip EP 1mm-2

From [bp]	To [bp]	Average Size [bp]	Molarity [pmol/l]	Conc. [pg/μl]	Corr. Area	% of Total	Size distribution in CV [%]	Color
332	473	398	2,362.6	618.52	529.3	62	5.6	Blue

Assay Class: High Sensitivity DNA Assay
Data Path: C:\...ents and Settings\Bioanalyzer\2012-11-14\2012-11-14_001.xad

Created: 11/14/2012 9:17:04 AM
Modified: 11/14/2012 9:59:48 AM

Gel Image



Assay Class: High Sensitivity DNA Assay
 Data Path: C:\...ents and Settings\Bioanalyzer\2012-11-14\2012-11-14_001.xad

Created: 11/14/2012 9:17:04 AM
 Modified: 11/14/2012 9:59:48 AM

Run Logbook

Description	Number	Source	Category	Sub Category	Time	Time Zone	User	Host
Run ended on port 1 (Number of wells acquired: 12)		Instrument	Run		11/14/2012 9:58:23 AM	(GMT --08:00) Pacific Standard Time	UC Davis	D8XSMGH1
Run started on port 1 (File: C:\Documents and Settings\Bioanalyzer\2012-11-14\2012-11-14_001.xad)		Instrument	Run		11/14/2012 9:17:09 AM	(GMT --08:00) Pacific Standard Time	UC Davis	D8XSMGH1
Product Number : G2938B		Instrument	Run		11/14/2012 9:17:09 AM	(GMT --08:00) Pacific Standard Time	UC Davis	D8XSMGH1
Name :		Instrument	Run		11/14/2012 9:17:09 AM	(GMT --08:00) Pacific Standard Time	UC Davis	D8XSMGH1
Vendor : Agilent Technologies		Instrument	Run		11/14/2012 9:17:09 AM	(GMT --08:00) Pacific Standard Time	UC Davis	D8XSMGH1
Serial# : DE13701086		Instrument	Run		11/14/2012 9:17:09 AM	(GMT --08:00) Pacific Standard Time	UC Davis	D8XSMGH1
Firmware : C.01.069		Instrument	Run		11/14/2012 9:17:09 AM	(GMT --08:00) Pacific Standard Time	UC Davis	D8XSMGH1
Cartridge : Electrode		Instrument	Run		11/14/2012 9:17:09 AM	(GMT --08:00) Pacific Standard Time	UC Davis	D8XSMGH1