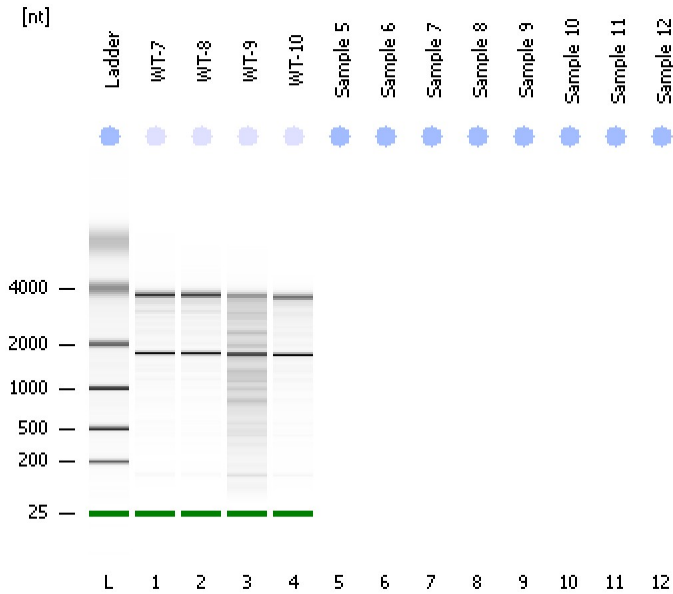


Assay Class: Eukaryote Total RNA Nano  
Data Path: C:\...ents and Settings\Bioanalyzer\2012-11-14\2012-11-14\_007.xad

Created: 11/14/2012 5:21:18 PM  
Modified: 11/14/2012 5:33:53 PM

### Electrophoresis File Run Summary



#### Instrument Information:

Instrument Name: DE13701086      Firmware: C.01.069  
Serial#: DE13701086      Type: G2938B

#### Assay Information:

Assay Origin Path: C:\Program Files\Agilent\2100 bioanalyzer\2100 expert\assays\RNA\Eukaryote Total RNA Nano Series II.xsy

Assay Class: Eukaryote Total RNA Nano

Version: 2.6

Assay Comments: Total RNA Analysis ng sensitivity (Eukaryote)

© Copyright 2003 - 2009 Agilent Technologies, Inc.

#### Chip Information:

Chip Lot #:

Reagent Kit Lot #:

Chip Comments:



Assay Class: Eukaryote Total RNA Nano  
Data Path: C:\...ents and Settings\Bioanalyzer\2012-11-14\2012-11-14\_007.xad

Created: 11/14/2012 5:21:18 PM  
Modified: 11/14/2012 5:33:53 PM

**Electrophoresis File Run Summary (Chip Summary)**

Sample Name	Sample Comment	Status	Result Label	Result Color
WT-7		✓	RIN: 8.90	
WT-8		✓	RIN:9	
WT-9		✓	RIN: 5.60	
WT-10		✓	RIN: 8.60	
Sample 5				
Sample 6				
Sample 7				
Sample 8				
Sample 9				
Sample 10				
Sample 11				
Sample 12				
Ladder		✓	All Other Samples	

**Chip Lot #**

**Reagent Kit Lot #**

**Chip Comments :**

Assay Class: Eukaryote Total RNA Nano  
Data Path: C:\...ents and Settings\Bioanalyzer\2012-11-14\2012-11-14\_007.xad

Created: 11/14/2012 5:21:18 PM  
Modified: 11/14/2012 5:33:53 PM

## Electrophoresis Assay Details

### General Analysis Settings

Number of Available Sample and Ladder Wells (Max.) : 13  
Minimum Visible Range [s] : 17  
Maximum Visible Range [s] : 70  
Start Analysis Time Range [s] : 19  
End Analysis Time Range [s] : 69  
Ladder Concentration [ng/ $\mu$ l] : 150  
Lower Marker Concentration [ng/ $\mu$ l] : 0  
Upper Marker Concentration [ng/ $\mu$ l] : 0  
Used Lower Marker for Quantitation  
Standard Curve Fit is Logarithmic  
Show Data Aligned to Lower Marker

### Integrator Settings

Integration Start Time [s] : 19  
Integration End Time [s] : 69  
Slope Threshold : 0.6  
Height Threshold [FU] : 0.5  
Area Threshold : 0.2  
Width Threshold [s] : 0.5  
Baseline Plateau [s] : 6

### Filter Settings

Filter Width [s] : 0.5  
Polynomial Order : 4

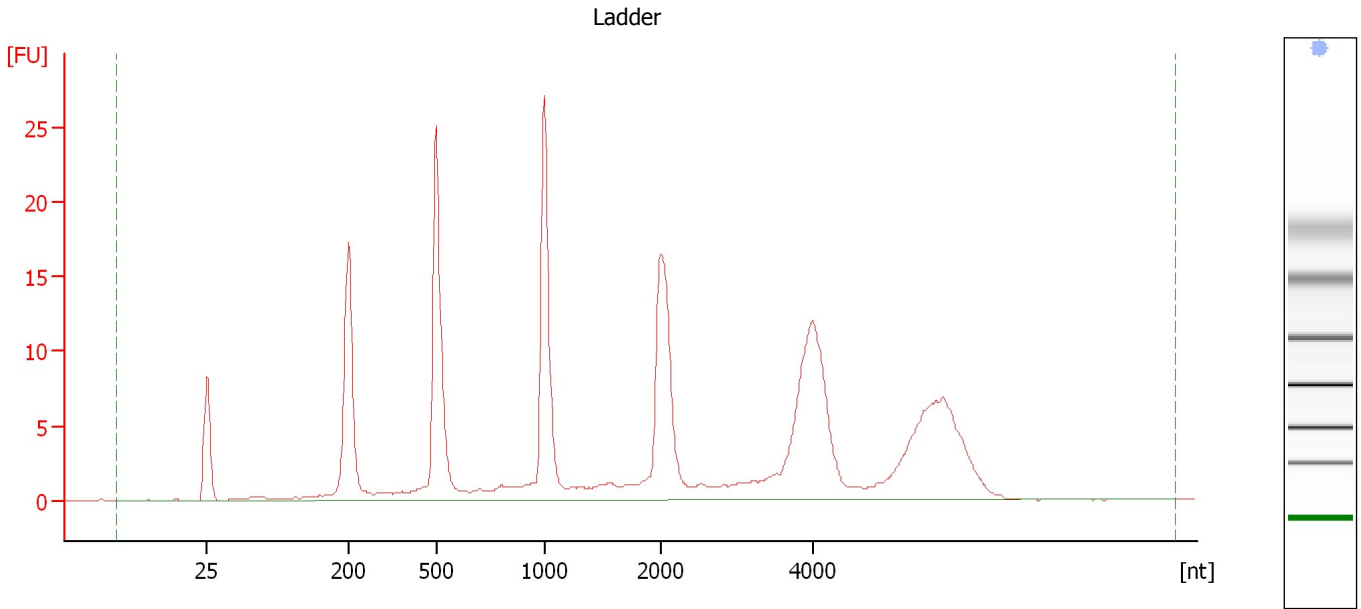
### Ladder

Ladder Peak	Size
1	25
2	200
3	500
4	1000
5	2000
6	4000

Assay Class: Eukaryote Total RNA Nano  
Data Path: C:\...ents and Settings\Bioanalyzer\2012-11-14\2012-11-14\_007.xad

Created: 11/14/2012 5:21:18 PM  
Modified: 11/14/2012 5:33:53 PM

**Electropherogram Summary**



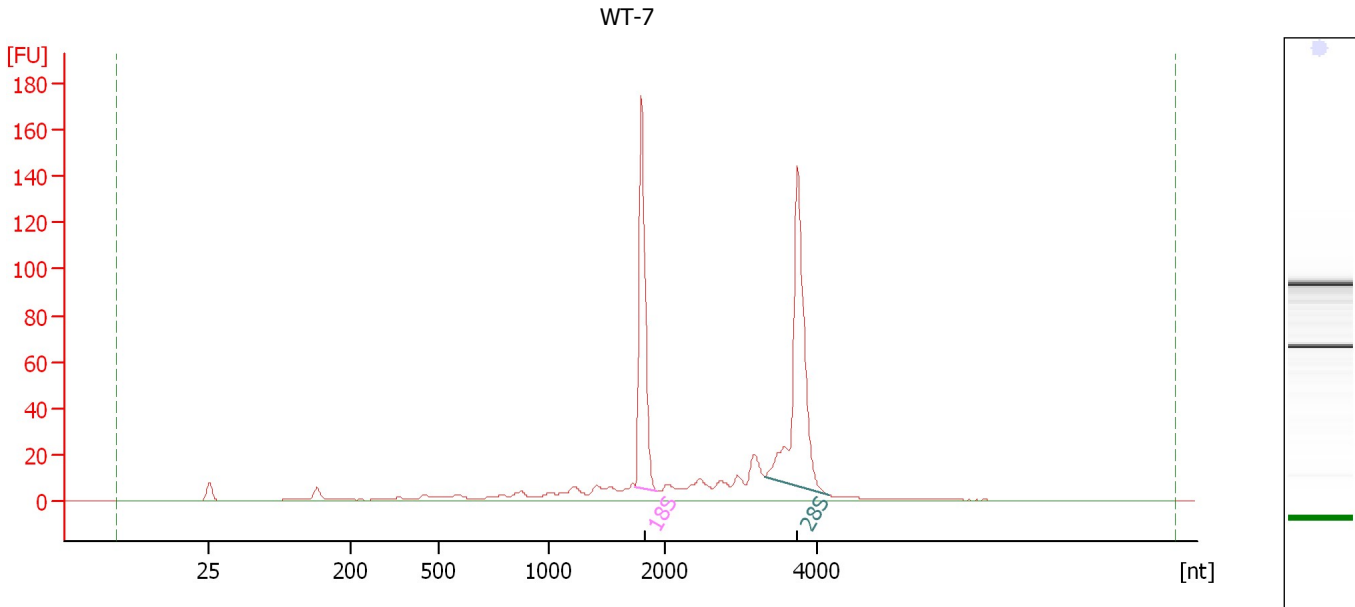
**Overall Results for Ladder**

RNA Area:	225.8	Result Flagging Color:	<span style="background-color: #add8e6; border: 1px solid black; display: inline-block; width: 20px; height: 10px;"></span>
RNA Concentration:	150 ng/ $\mu$ l	Result Flagging Label:	All Other Samples

Assay Class: Eukaryote Total RNA Nano  
 Data Path: C:\...ents and Settings\Bioanalyzer\2012-11-14\2012-11-14\_007.xad

Created: 11/14/2012 5:21:18 PM  
 Modified: 11/14/2012 5:33:53 PM

**Electropherogram Summary Continued ...**



**Overall Results for sample 1 : WT-7**

RNA Area:	536.5	RNA Integrity Number (RIN):	8.9 (B.02.08)
RNA Concentration:	356 ng/μl	Result Flagging Color:	<span style="background-color: #ccccff; border: 1px solid black; display: inline-block; width: 20px; height: 10px;"></span>
rRNA Ratio [28s / 18s]:	1.3	Result Flagging Label:	RIN: 8.90

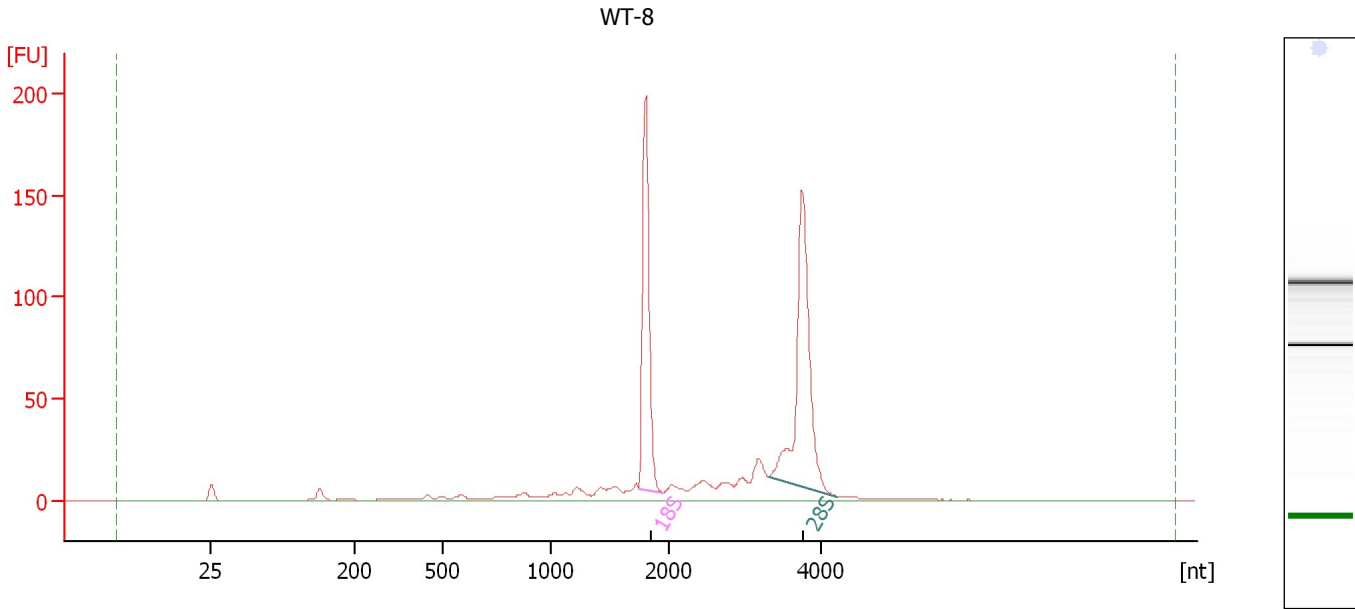
**Fragment table for sample 1 : WT-7**

Name	Start Size [nt]	End Size [nt]	Area	% of total Area
18S	1,746	1,937	124.0	23.1
28S	3,307	4,148	165.0	30.8

Assay Class: Eukaryote Total RNA Nano  
Data Path: C:\...ents and Settings\Bioanalyzer\2012-11-14\2012-11-14\_007.xad

Created: 11/14/2012 5:21:18 PM  
Modified: 11/14/2012 5:33:53 PM

**Electropherogram Summary Continued ...**



**Overall Results for sample 2 : WT-8**

RNA Area:	594.2	RNA Integrity Number (RIN):	9 (B.02.08)
RNA Concentration:	395 ng/μl	Result Flagging Color:	<span style="background-color: #ccccff; border: 1px solid black; display: inline-block; width: 20px; height: 10px;"></span>
rRNA Ratio [28s / 18s]:	1.3	Result Flagging Label:	RIN:9

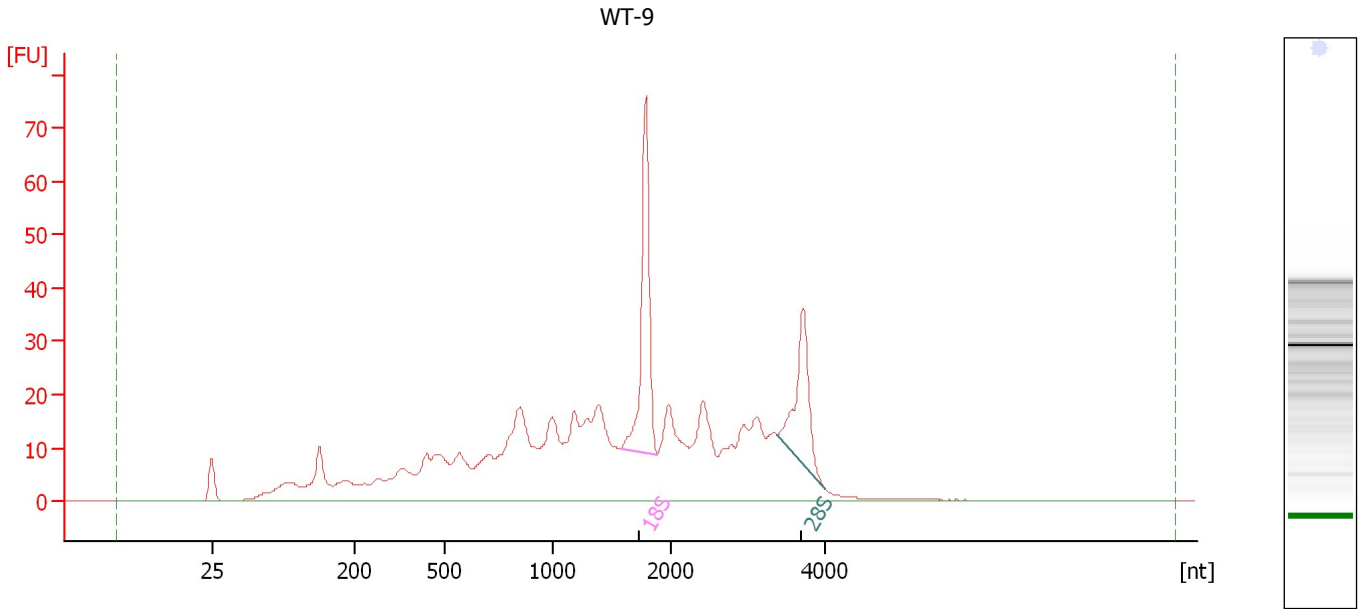
**Fragment table for sample 2 : WT-8**

Name	Start Size [nt]	End Size [nt]	Area	% of total Area
18S	1,739	1,949	144.7	24.3
28S	3,304	4,184	189.6	31.9

Assay Class: Eukaryote Total RNA Nano  
Data Path: C:\...ents and Settings\Bioanalyzer\2012-11-14\2012-11-14\_007.xad

Created: 11/14/2012 5:21:18 PM  
Modified: 11/14/2012 5:33:53 PM

**Electropherogram Summary Continued ...**



**Overall Results for sample 3 : WT-9**

RNA Area:	679.4	RNA Integrity Number (RIN):	5.6 (B.02.08)
RNA Concentration:	451 ng/μl	Result Flagging Color:	<span style="background-color: #ccccff; border: 1px solid black; display: inline-block; width: 20px; height: 10px;"></span>
rRNA Ratio [28s / 18s]:	0.6	Result Flagging Label:	RIN: 5.60

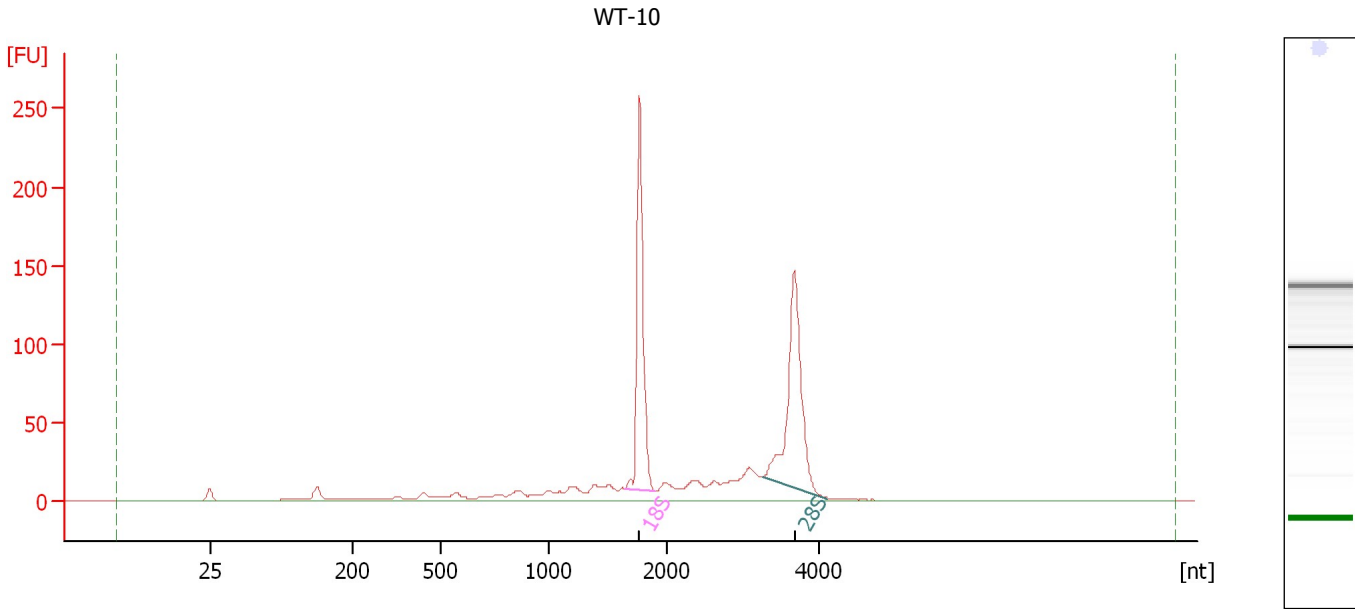
**Fragment table for sample 3 : WT-9**

Name	Start Size [nt]	End Size [nt]	Area	% of total Area
18S	1,568	1,886	60.5	8.9
28S	3,387	4,000	38.1	5.6

Assay Class: Eukaryote Total RNA Nano  
Data Path: C:\...ents and Settings\Bioanalyzer\2012-11-14\2012-11-14\_007.xad

Created: 11/14/2012 5:21:18 PM  
Modified: 11/14/2012 5:33:53 PM

**Electropherogram Summary Continued ...**



**Overall Results for sample 4 : WT-10**

RNA Area:	769.1	RNA Integrity Number (RIN):	8.6 (B.02.08)
RNA Concentration:	511 ng/μl	Result Flagging Color:	<span style="background-color: #ccccff; border: 1px solid black; display: inline-block; width: 20px; height: 10px;"></span>
rRNA Ratio [28s / 18s]:	1.0	Result Flagging Label:	RIN: 8.60

**Fragment table for sample 4 : WT-10**

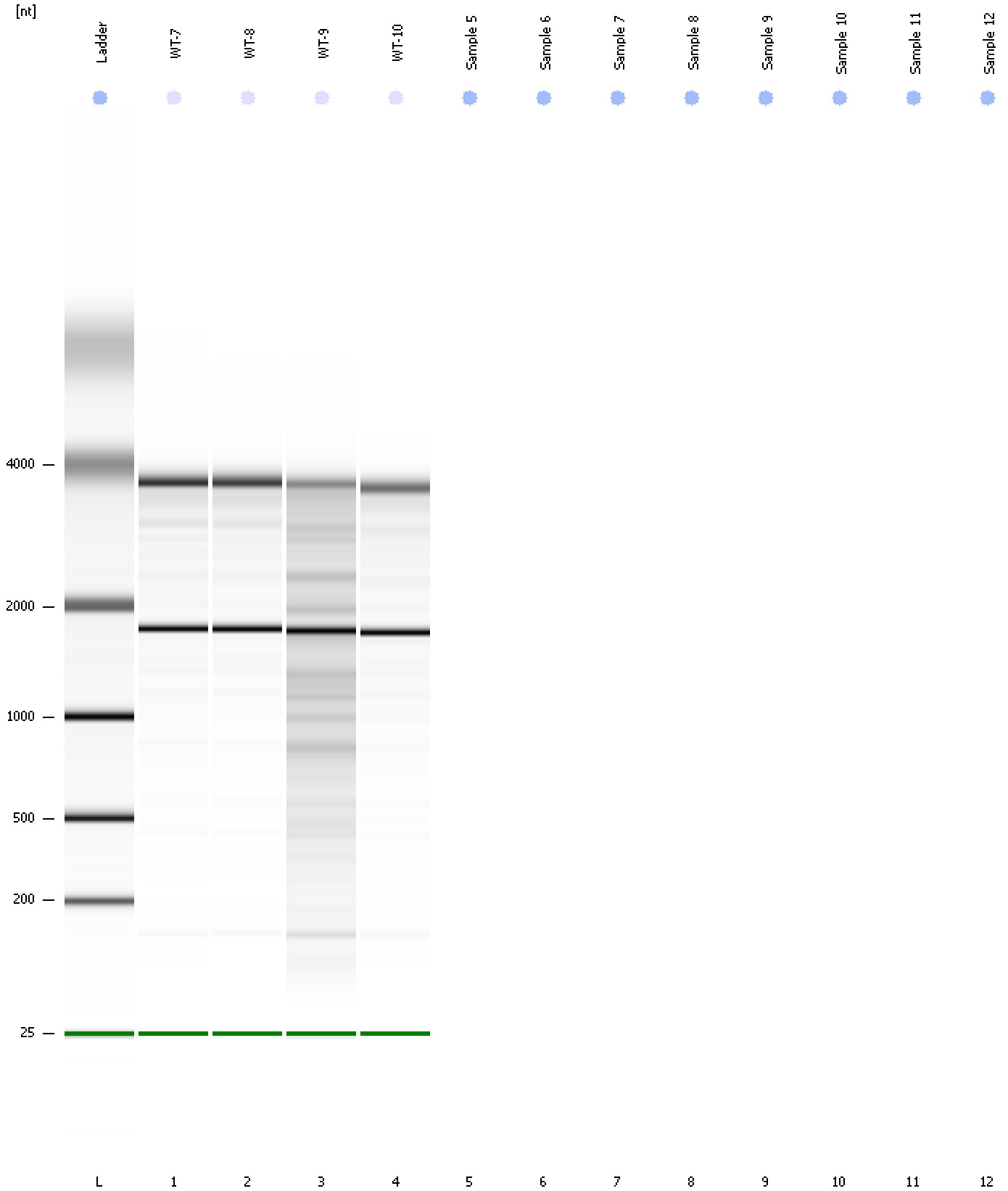
Name	Start Size [nt]	End Size [nt]	Area	% of total Area
18S	1,638	1,902	191.4	24.9
28S	3,249	4,103	199.5	25.9



Assay Class: Eukaryote Total RNA Nano  
Data Path: C:\...ents and Settings\Bioanalyzer\2012-11-14\2012-11-14\_007.xad

Created: 11/14/2012 5:21:18 PM  
Modified: 11/14/2012 5:33:53 PM

**Gel Image**



Assay Class: Eukaryote Total RNA Nano  
Data Path: C:\...ents and Settings\Bioanalyzer\2012-11-14\2012-11-14\_007.xad

Created: 11/14/2012 5:21:18 PM  
Modified: 11/14/2012 5:33:53 PM

**Invalid Samples**

- Sample 5 has not been run, no results available.
- Sample 6 has not been run, no results available.
- Sample 7 has not been run, no results available.
- Sample 8 has not been run, no results available.
- Sample 9 has not been run, no results available.
- Sample 10 has not been run, no results available.
- Sample 11 has not been run, no results available.
- Sample 12 has not been run, no results available.

Assay Class: Eukaryote Total RNA Nano  
 Data Path: C:\...ents and Settings\Bioanalyzer\2012-11-14\2012-11-14\_007.xad

Created: 11/14/2012 5:21:18 PM  
 Modified: 11/14/2012 5:33:53 PM

**Run Logbook**

Description	Number	Source	Category	Sub Category	Time	Time Zone	User	Host
Run ended on port 1 (Number of wells acquired: 5)		Instrument	Run		11/14/2012 5:33:50 PM	(GMT --08:00) Pacific Standard Time	UC Davis	D8XSMGH1
Run started on port 1 (File: C:\Documents and Settings\Bioanalyzer\2012-11-14\2012-11-14_007.xad)		Instrument	Run		11/14/2012 5:21:23 PM	(GMT --08:00) Pacific Standard Time	UC Davis	D8XSMGH1
Product Number : G2938B		Instrument	Run		11/14/2012 5:21:23 PM	(GMT --08:00) Pacific Standard Time	UC Davis	D8XSMGH1
Name :		Instrument	Run		11/14/2012 5:21:23 PM	(GMT --08:00) Pacific Standard Time	UC Davis	D8XSMGH1
Vendor : Agilent Technologies		Instrument	Run		11/14/2012 5:21:23 PM	(GMT --08:00) Pacific Standard Time	UC Davis	D8XSMGH1
Serial# : DE13701086		Instrument	Run		11/14/2012 5:21:23 PM	(GMT --08:00) Pacific Standard Time	UC Davis	D8XSMGH1
Firmware : C.01.069		Instrument	Run		11/14/2012 5:21:23 PM	(GMT --08:00) Pacific Standard Time	UC Davis	D8XSMGH1
Cartridge : Electrode		Instrument	Run		11/14/2012 5:21:23 PM	(GMT --08:00) Pacific Standard Time	UC Davis	D8XSMGH1