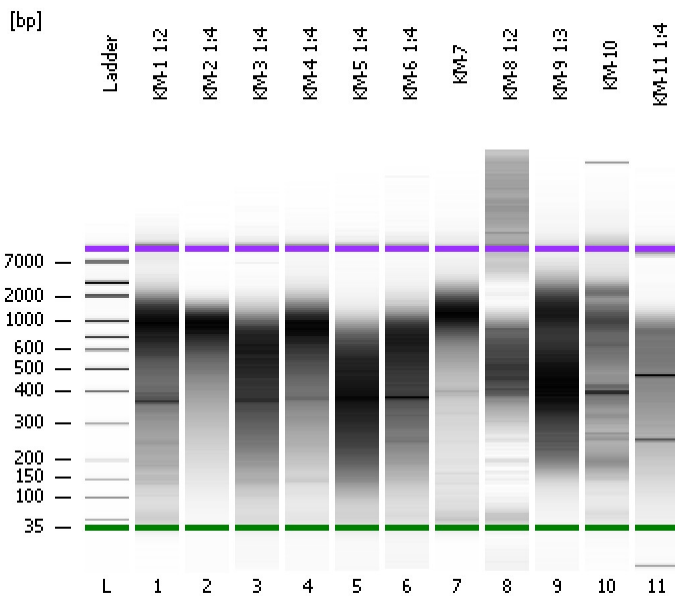


Assay Class: High Sensitivity DNA Assay
Data Path: C:\...ents and Settings\Bioanalyzer\2012-11-15\2012-11-15_002.xad

Created: 11/15/2012 10:04:13 AM
Modified: 11/15/2012 11:16:09 AM

Electrophoresis File Run Summary



Instrument Information:

Instrument Name: DE13701086 Firmware: C.01.069
Serial#: DE13701086 Type: G2938B

Assay Information:

Assay Origin Path: C:\Program Files\Agilent\2100 bioanalyzer\2100 expert\assays\dsDNA\High Sensitivity DNA.xsy
Assay Class: High Sensitivity DNA Assay
Version: 1.03
Assay Comments: Copyright © 2003-2010 Agilent Technologies

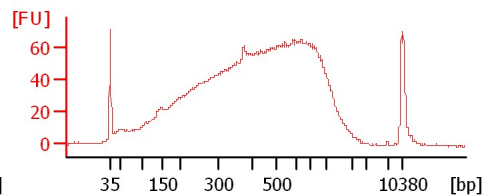
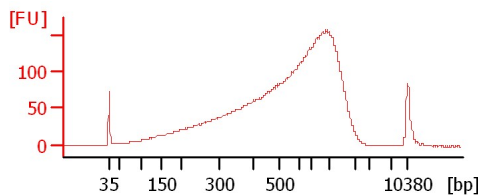
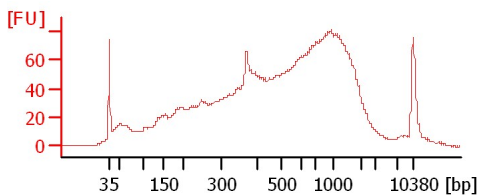
Chip Information:

Chip Lot #:
Reagent Kit Lot #:
Chip Comments:

KM-1 1:2

KM-2 1:4

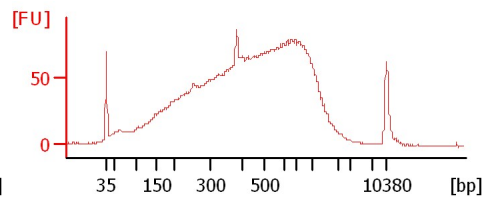
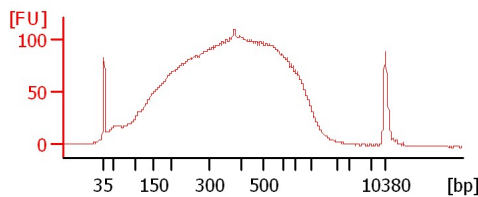
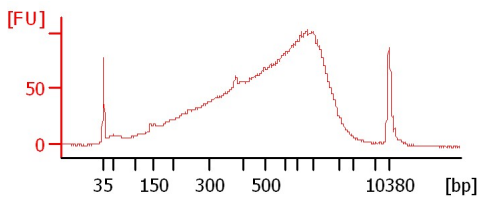
KM-3 1:4



KM-4 1:4

KM-5 1:4

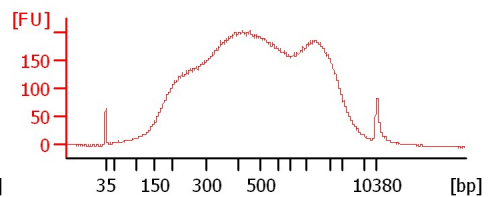
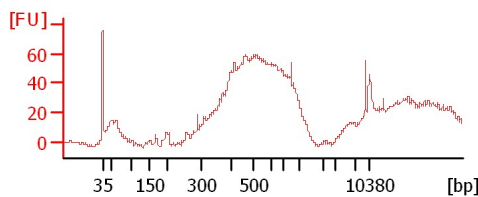
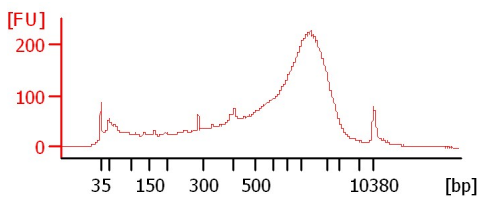
KM-6 1:4



KM-7

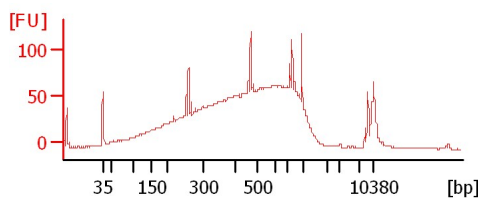
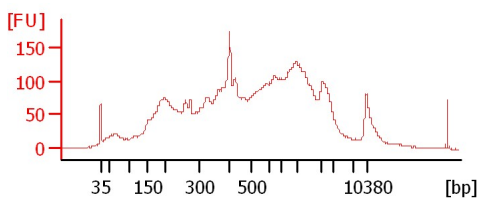
KM-8 1:2

KM-9 1:3



KM-10

KM-11 1:4



Assay Class: High Sensitivity DNA Assay
 Data Path: C:\...ents and Settings\Bioanalyzer\2012-11-15\2012-11-15_002.xad

Created: 11/15/2012 10:04:13 AM
 Modified: 11/15/2012 11:16:09 AM

Electrophoresis File Run Summary (Chip Summary)

Sample Name	Sample Comment	Rest. Digest	Status	Observation	Result Label	Result Color
KM-1 1:2		<input type="checkbox"/>	✓			
KM-2 1:4		<input type="checkbox"/>	✓			
KM-3 1:4		<input type="checkbox"/>	✓			
KM-4 1:4		<input type="checkbox"/>	✓			
KM-5 1:4		<input type="checkbox"/>	✓			
KM-6 1:4		<input type="checkbox"/>	✓			
KM-7		<input type="checkbox"/>	✓			
KM-8 1:2		<input type="checkbox"/>	✓			
KM-9 1:3		<input type="checkbox"/>	✓			
KM-10		<input type="checkbox"/>	✓			
KM-11 1:4		<input type="checkbox"/>	✓			
Ladder		<input type="checkbox"/>	✓			

Chip Lot #

Reagent Kit Lot #

Chip Comments :

Assay Class: High Sensitivity DNA Assay
Data Path: C:\...ents and Settings\Bioanalyzer\2012-11-15\2012-11-15_002.xad

Created: 11/15/2012 10:04:13 AM
Modified: 11/15/2012 11:16:09 AM

Electrophoresis Assay Details

General Analysis Settings

Number of Available Sample and Ladder Wells (Max.) : 12
Minimum Visible Range [s] : 32
Maximum Visible Range [s] : 138
Start Analysis Time Range [s] : 33
End Analysis Time Range [s] : 137.5
Ladder Concentration [pg/μl] : 1950
Uses Standard Area for Ladder Fragments
Lower Marker Concentration [pg/μl] : 125
Upper Marker Concentration [pg/μl] : 75
Used Upper Marker for Quantitation
Standard Curve Fit is Point to Point
Show Data Aligned to Lower and Upper Marker

Integrator Settings

Integration Start Time [s] : 33.05
Integration End Time [s] : 137
Slope Threshold : 0.8
Height Threshold [FU] : 5
Area Threshold : 0.1
Width Threshold [s] : 0.6
Baseline Plateau [s] : 0.5

Filter Settings

Filter Width [s] : 0.5
Polynomial Order : 4

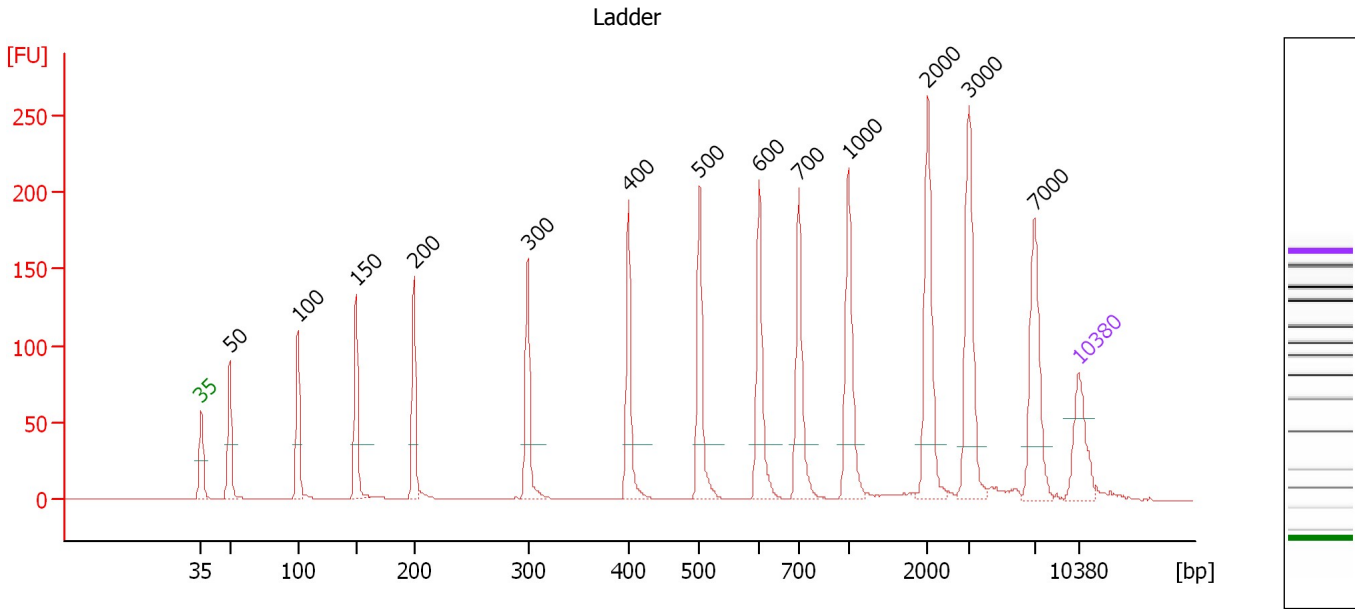
Ladder

Ladder Peak	Size	Area
1	35	160
2	50	210
3	100	208
4	150	221
5	200	242
6	300	270
7	400	305
8	500	306
9	600	336
10	700	321
11	1000	366
12	2000	413
13	3000	411
14	7000	400
15	10380	214

Assay Class: High Sensitivity DNA Assay
 Data Path: C:\...ents and Settings\Bioanalyzer\2012-11-15\2012-11-15_002.xad

Created: 11/15/2012 10:04:13 AM
 Modified: 11/15/2012 11:16:09 AM

Electropherogram Summary



Overall Results for Ladder

Noise: 0.2

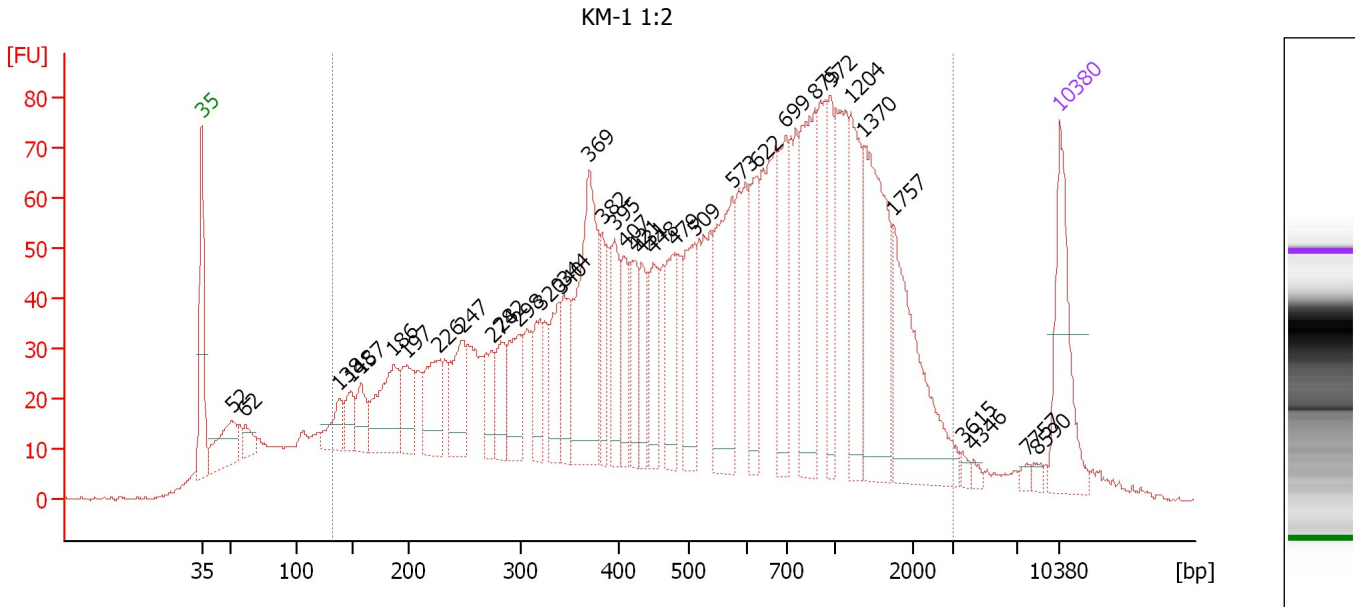
Peak table for Ladder

Peak	Size [bp]	Conc. [pg/μl]	Molarity [pmol/l]	Observations
1	35	125.00	5,411.3	Lower Marker
2	50	150.00	4,545.5	Ladder Peak
3	100	150.00	2,272.7	Ladder Peak
4	150	150.00	1,515.2	Ladder Peak
5	200	150.00	1,136.4	Ladder Peak
6	300	150.00	757.6	Ladder Peak
7	400	150.00	568.2	Ladder Peak
8	500	150.00	454.5	Ladder Peak
9	600	150.00	378.8	Ladder Peak
10	700	150.00	324.7	Ladder Peak
11	1,000	150.00	227.3	Ladder Peak
12	2,000	150.00	113.6	Ladder Peak
13	3,000	150.00	75.8	Ladder Peak
14	7,000	150.00	32.5	Ladder Peak
15	10,380	75.00	10.9	Upper Marker

Assay Class: High Sensitivity DNA Assay
 Data Path: C:\...ents and Settings\Bioanalyzer\2012-11-15\2012-11-15_002.xad

Created: 11/15/2012 10:04:13 AM
 Modified: 11/15/2012 11:16:09 AM

Electropherogram Summary Continued ...



Overall Results for sample 1 : KM-1 1:2

Number of peaks found: 36 Corr. Area 1: 2,969.8
 Noise: 0.4

Peak table for sample 1 : KM-1 1:2

Peak	Size [bp]	Conc. [pg/μl]	Molarity [pmol/l]	Observations
1	35	125.00	5,411.3	Lower Marker
2	52	70.73	2,074.4	
3	62	21.21	521.3	
4	138	37.87	417.3	
5	148	30.47	312.3	
6	157	37.75	364.8	
7	186	98.31	802.3	
8	197	56.29	432.9	
9	226	70.92	476.2	
10	247	72.91	447.0	
11	274	38.19	211.3	
12	282	46.82	251.6	
13	298	58.91	299.3	
14	320	44.53	210.7	
15	340	51.54	229.9	
16	344	50.25	221.3	
17	369	180.18	740.0	
18	382	46.40	184.1	
19	395	65.03	249.5	
20	407	43.55	162.3	
21	421	39.72	142.9	
22	431	41.22	144.8	
23	448	51.83	175.3	
24	479	64.61	204.5	
25	509	68.52	204.1	
26	573	122.66	324.1	

Assay Class: High Sensitivity DNA Assay
 Data Path: C:\...ents and Settings\Bioanalyzer\2012-11-15\2012-11-15_002.xad


Created: 11/15/2012 10:04:13 AM
 Modified: 11/15/2012 11:16:09 AM

Electropherogram Summary Continued ...

... Peak table for sample 1 : KM-1 1:2

Peak	Size [bp]	Conc. [pg/μl]	Molarity [pmol/l]	Observations
27	622	65.80	160.3	
28	699	75.01	162.5	
29	875	123.07	213.2	
30	972	47.01	73.2	
31	1,204	79.54	100.1	
32	1,370	141.62	156.6	
33	1,757	121.47	104.8	
34	3,615	4.80	2.0	
35	4,346	3.70	1.3	
36	7,757	3.82	0.7	
37	8,590	4.14	0.7	
38	10,380	75.00	10.9	Upper Marker

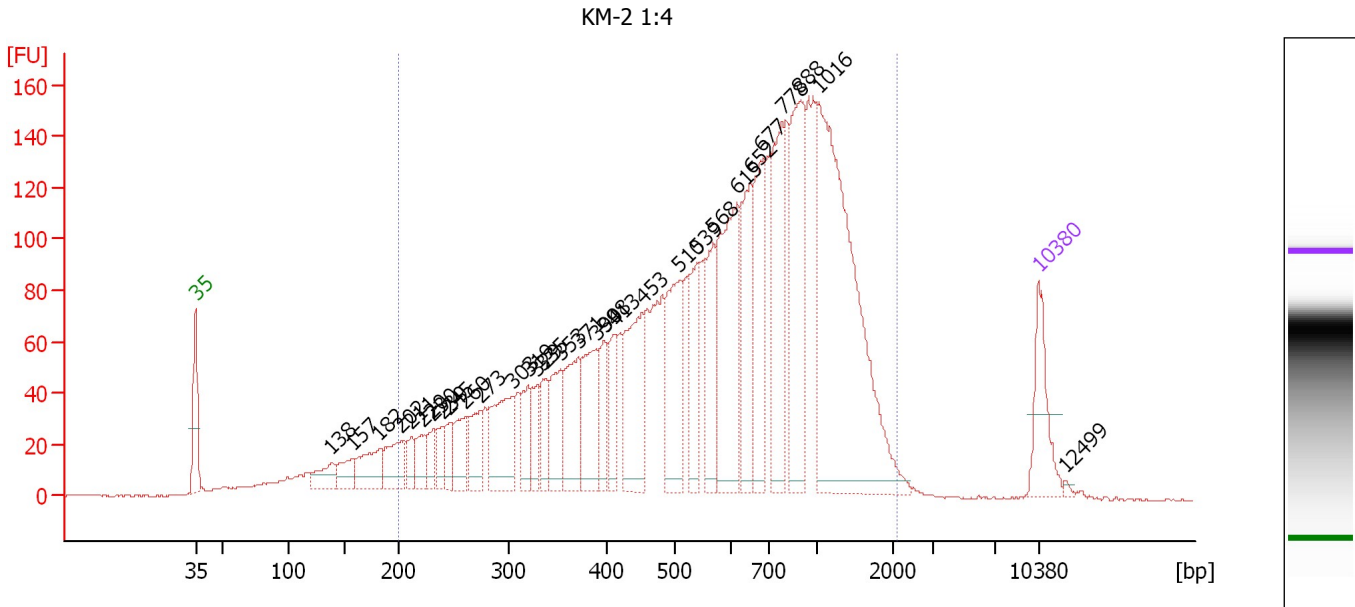
Region table for sample 1 : KM-1 1:2

From [bp]	To [bp]	Average Size [bp]	Molarity [pmol/l]	Conc. [pg/μl]	Corr. Area	% of Total	Size distribution in CV [%]	Color
132	3,039	713	14,366.1	3,543.96	2,969.8	89	73.7	

Assay Class: High Sensitivity DNA Assay
 Data Path: C:\...ents and Settings\Bioanalyzer\2012-11-15\2012-11-15_002.xad

Created: 11/15/2012 10:04:13 AM
 Modified: 11/15/2012 11:16:09 AM

Electropherogram Summary Continued ...



Overall Results for sample 2 : KM-2 1:4

Number of peaks found: 31 Corr. Area 1: 3,779.3
 Noise: 0.2

Peak table for sample 2 : KM-2 1:4

Peak	Size [bp]	Conc. [pg/μl]	Molarity [pmol/l]	Observations
1	35	125.00	5,411.3	Lower Marker
2	138	54.09	593.0	
3	157	47.38	456.2	
4	182	85.52	712.2	
5	202	79.66	598.4	
6	211	37.06	266.2	
7	220	45.14	310.7	
8	230	42.84	281.7	
9	239	37.72	239.0	
10	245	36.73	226.7	
11	260	73.04	426.4	
12	273	73.52	407.8	
13	303	146.33	732.6	
14	319	63.24	300.2	
15	329	50.50	232.5	
16	335	56.12	253.7	
17	353	85.77	368.4	
18	371	130.58	532.6	
19	390	128.24	498.7	
20	398	65.02	247.3	
21	413	66.92	245.7	
22	453	176.37	589.5	
23	510	174.61	519.2	
24	539	95.96	269.6	
25	568	104.86	279.6	
26	615	245.88	605.7	

Assay Class: High Sensitivity DNA Assay
 Data Path: C:\...ents and Settings\Bioanalyzer\2012-11-15\2012-11-15_002.xad


Created: 11/15/2012 10:04:13 AM
 Modified: 11/15/2012 11:16:09 AM

Electropherogram Summary Continued ...

... Peak table for sample 2 : KM-2 1:4

Peak	Size [bp]	Conc. [pg/μl]	Molarity [pmol/l]	Observations
27	652	150.81	350.7	
28	677	148.28	331.9	
29	778	193.12	376.0	
30	888	234.00	399.3	
31	1,016	588.77	878.3	
32	10,380	75.00	10.9	Upper Marker
33	12,499	0.00	0.0	

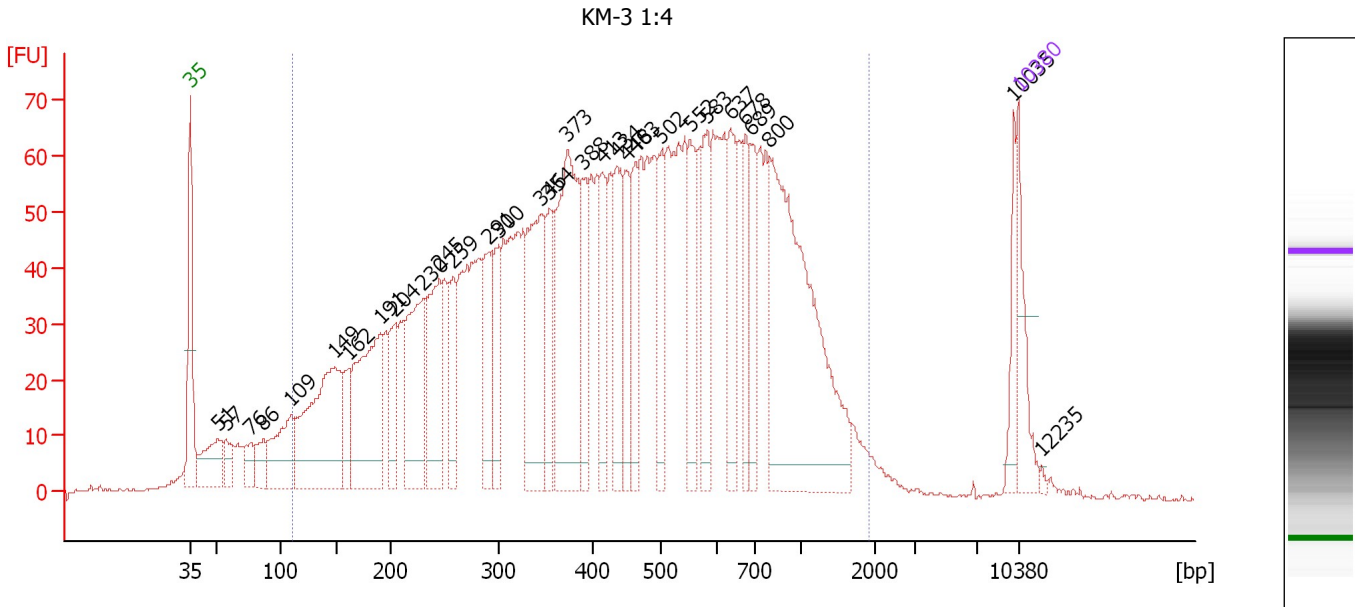
Region table for sample 2 : KM-2 1:4

From [bp]	To [bp]	Average Size [bp]	Molarity [pmol/l]	Conc. [pg/μl]	Corr. Area	% of Total	Size distribution in CV [%]	Color
200	2,087	702	13,246.4	4,238.15	3,779.3	92	53.0	

Assay Class: High Sensitivity DNA Assay
 Data Path: C:\...ents and Settings\Bioanalyzer\2012-11-15\2012-11-15_002.xad

Created: 11/15/2012 10:04:13 AM
 Modified: 11/15/2012 11:16:09 AM

Electropherogram Summary Continued ...



Overall Results for sample 3 : KM-3 1:4

Number of peaks found: 31 Corr. Area 1: 2,919.8
 Noise: 0.3

Peak table for sample 3 : KM-3 1:4

Peak	Size [bp]	Conc. [pg/μl]	Molarity [pmol/l]	Observations
1	35	125.00	5,411.3	Lower Marker
2	51	121.42	3,620.6	
3	57	42.58	1,131.5	
4	76	41.38	824.5	
5	86	52.90	932.2	
6	109	155.35	2,163.3	
7	149	395.39	4,017.0	
8	162	73.27	685.8	
9	191	316.32	2,511.8	
10	204	99.18	738.1	
11	230	243.69	1,603.1	
12	245	199.61	1,236.1	
13	259	89.96	527.2	
14	291	136.67	712.3	
15	300	100.59	507.8	
16	346	264.46	1,159.7	
17	354	102.12	437.2	
18	373	379.61	1,542.1	
19	388	97.71	381.4	
20	413	102.67	376.3	
21	434	139.22	485.9	
22	448	93.78	316.9	
23	463	94.36	308.9	
24	502	102.32	308.8	
25	552	124.83	342.5	
26	583	128.41	334.0	

Assay Class: High Sensitivity DNA Assay
 Data Path: C:\...ents and Settings\Bioanalyzer\2012-11-15\2012-11-15_002.xad


Created: 11/15/2012 10:04:13 AM
 Modified: 11/15/2012 11:16:09 AM

Electropherogram Summary Continued ...

... Peak table for sample 3 : KM-3 1:4

Peak	Size [bp]	Conc. [pg/μl]	Molarity [pmol/l]	Observations
27	637	113.63	270.5	
28	678	85.83	191.8	
29	689	97.50	214.3	
30	800	546.45	1,034.7	
31	10,035	45.88	6.9	
32	10,380	75.00	10.9	Upper Marker
33	12,235	0.00	0.0	

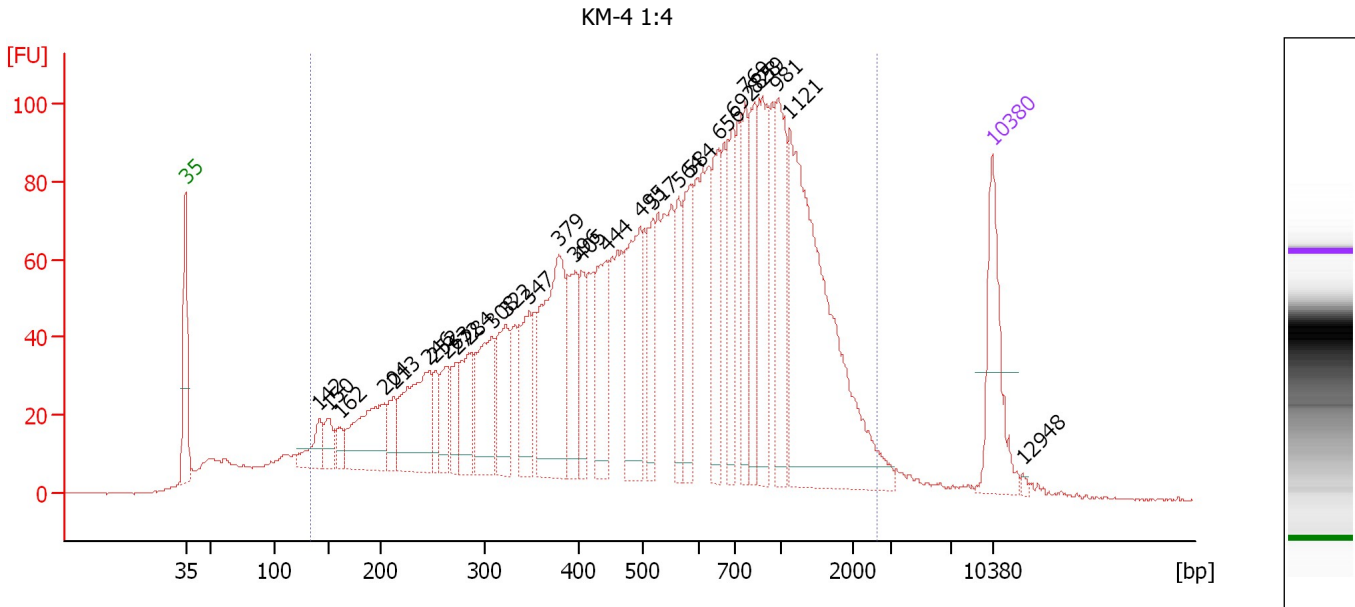
Region table for sample 3 : KM-3 1:4

From [bp]	To [bp]	Average Size [bp]	Molarity [pmol/l]	Conc. [pg/μl]	Corr. Area	% of Total	Size distribution in CV [%]	Color
110	1,906	502	31,541.5	6,650.21	2,919.8	92	58.3	

Assay Class: High Sensitivity DNA Assay
 Data Path: C:\...ents and Settings\Bioanalyzer\2012-11-15\2012-11-15_002.xad

Created: 11/15/2012 10:04:13 AM
 Modified: 11/15/2012 11:16:09 AM

Electropherogram Summary Continued ...



Overall Results for sample 4 : KM-4 1:4

Number of peaks found: 29 Corr. Area 1: 3,333.9
 Noise: 0.2

Peak table for sample 4 : KM-4 1:4

Peak	Size [bp]	Conc. [pg/μl]	Molarity [pmol/l]	Observations
1	35	125.00	5,411.3	Lower Marker
2	142	43.87	467.6	
3	150	29.80	300.7	
4	162	17.62	165.0	
5	204	116.01	861.5	
6	213	31.92	227.4	
7	246	140.29	865.1	
8	252	30.96	185.9	
9	263	45.66	262.6	
10	272	34.51	192.5	
11	284	66.52	355.1	
12	308	107.68	530.5	
13	322	78.21	368.1	
14	347	76.81	335.7	
15	379	194.30	777.0	
16	396	75.48	288.7	
17	405	44.18	165.2	
18	444	92.96	317.6	
19	495	134.24	410.8	
20	517	57.72	169.0	
21	564	54.56	146.6	
22	584	74.95	194.3	
23	656	74.31	171.7	
24	692	79.02	172.9	
25	769	61.98	122.1	
26	828	69.93	128.0	

Assay Class: High Sensitivity DNA Assay
 Data Path: C:\...ents and Settings\Bioanalyzer\2012-11-15\2012-11-15_002.xad


Created: 11/15/2012 10:04:13 AM
 Modified: 11/15/2012 11:16:09 AM

Electropherogram Summary Continued ...

... Peak table for sample 4 : KM-4 1:4

Peak	Size [bp]	Conc. [pg/μl]	Molarity [pmol/l]	Observations
27	859	111.19	196.1	
28	981	97.29	150.3	
29	1,121	342.09	462.5	
30	10,380	75.00	10.9	Upper Marker
31	12,948	0.00	0.0	

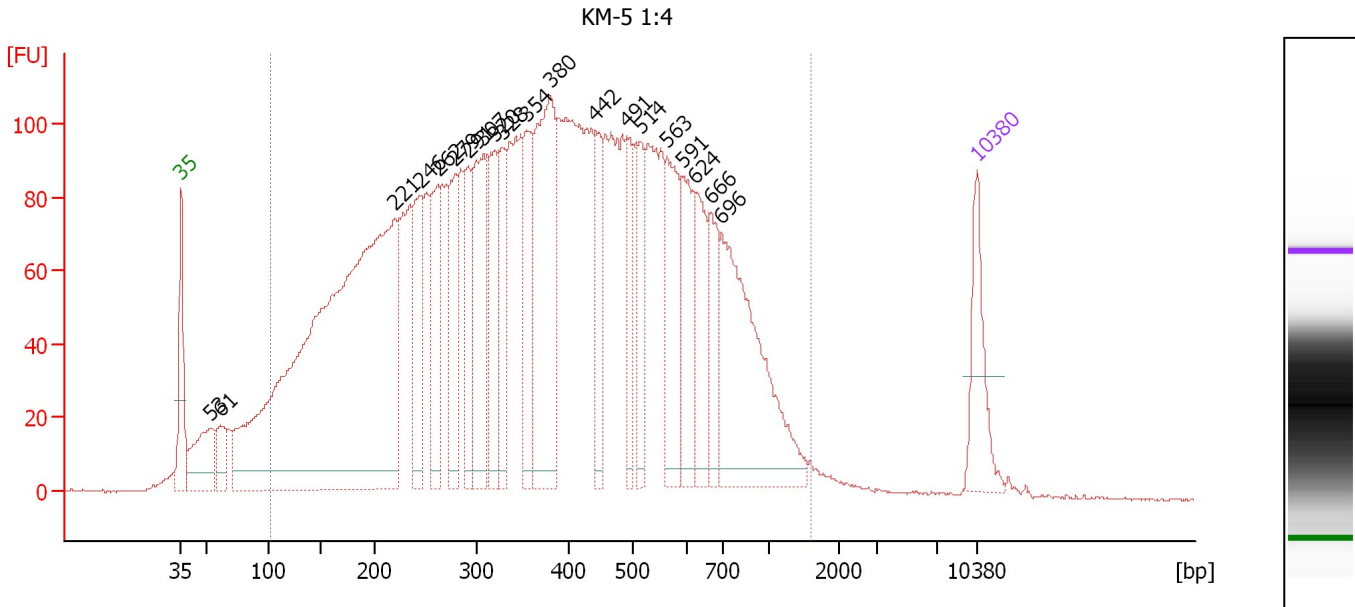
Region table for sample 4 : KM-4 1:4

From [bp]	To [bp]	Average Size [bp]	Molarity [pmol/l]	Conc. [pg/μl]	Corr. Area	% of Total	Size distribution in CV [%]	Color
134	2,622	672	13,214.1	3,458.10	3,333.9	93	65.1	

Assay Class: High Sensitivity DNA Assay
 Data Path: C:\...ents and Settings\Bioanalyzer\2012-11-15\2012-11-15_002.xad

Created: 11/15/2012 10:04:13 AM
 Modified: 11/15/2012 11:16:09 AM

Electropherogram Summary Continued ...



Overall Results for sample 5 : KM-5 1:4

Number of peaks found: 20 Corr. Area 1: 4,982.1
 Noise: 0.3

Peak table for sample 5 : KM-5 1:4

Peak	Size [bp]	Conc. [pg/μl]	Molarity [pmol/l]	Observations
1	35	125.00	5,411.3	Lower Marker
2	53	125.20	3,551.3	
3	61	54.78	1,356.9	
4	221	1,463.17	10,048.7	
5	246	148.02	912.2	
6	262	138.87	803.6	
7	279	137.51	747.2	
8	291	107.28	558.2	
9	307	211.87	1,045.8	
10	320	142.13	673.4	
11	328	111.35	514.4	
12	354	124.57	532.9	
13	380	318.83	1,271.7	
14	442	88.72	304.2	
15	491	83.94	259.1	
16	514	86.31	254.6	
17	563	144.27	388.3	
18	591	117.49	301.0	
19	624	100.48	243.9	
20	666	86.71	197.3	
21	696	327.38	712.9	
22	10,380	75.00	10.9	Upper Marker

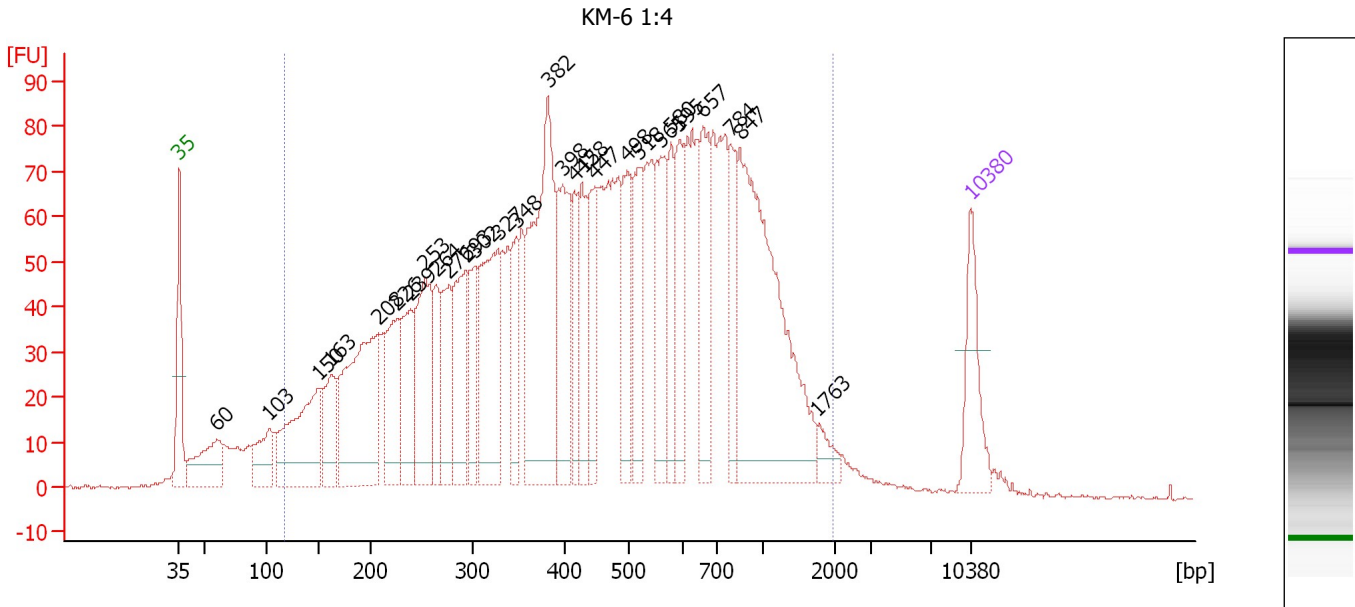
Region table for sample 5 : KM-5 1:4

From [bp]	To [bp]	Average Size [bp]	Molarity [pmol/l]	Conc. [pg/μl]	Corr. Area	% of Total	Size distribution in CV [%]	Color
101	1,591	414	31,913.0	5,899.51	4,982.1	93	52.1	Blue

Assay Class: High Sensitivity DNA Assay
 Data Path: C:\...ents and Settings\Bioanalyzer\2012-11-15\2012-11-15_002.xad

Created: 11/15/2012 10:04:13 AM
 Modified: 11/15/2012 11:16:09 AM

Electropherogram Summary Continued ...



Overall Results for sample 6 : KM-6 1:4

Number of peaks found: 28 Corr. Area 1: 3,350.4
 Noise: 0.4

Peak table for sample 6 : KM-6 1:4

Peak	Size [bp]	Conc. [pg/μl]	Molarity [pmol/l]	Observations
1	35	125.00	5,411.3	Lower Marker
2	60	130.72	3,275.1	
3	103	89.11	1,312.0	
4	150	249.81	2,520.0	
5	163	108.50	1,011.6	
6	208	340.78	2,485.4	
7	226	151.12	1,013.7	
8	239	130.32	825.0	
9	253	198.59	1,190.2	
10	264	84.01	482.7	
11	276	119.05	653.3	
12	293	153.68	795.5	
13	302	89.82	450.2	
14	327	237.12	1,098.9	
15	348	84.62	368.4	
16	382	369.69	1,466.1	
17	398	169.81	645.7	
18	415	76.73	279.9	
19	428	99.47	352.3	
20	447	105.02	356.0	
21	498	111.65	339.8	
22	518	115.61	338.0	
23	561	134.71	364.0	
24	580	72.70	190.1	
25	595	100.09	254.7	
26	657	126.02	290.4	

Assay Class: High Sensitivity DNA Assay
 Data Path: C:\...ents and Settings\Bioanalyzer\2012-11-15\2012-11-15_002.xad


Created: 11/15/2012 10:04:13 AM
 Modified: 11/15/2012 11:16:09 AM

Electropherogram Summary Continued ...

... Peak table for sample 6 : KM-6 1:4

Peak	Size [bp]	Conc. [pg/μl]	Molarity [pmol/l]	Observations
27	784	78.75	152.3	
28	847	443.71	793.5	
29	1,763	22.13	19.0	
30	10,380	75.00	10.9	Upper Marker

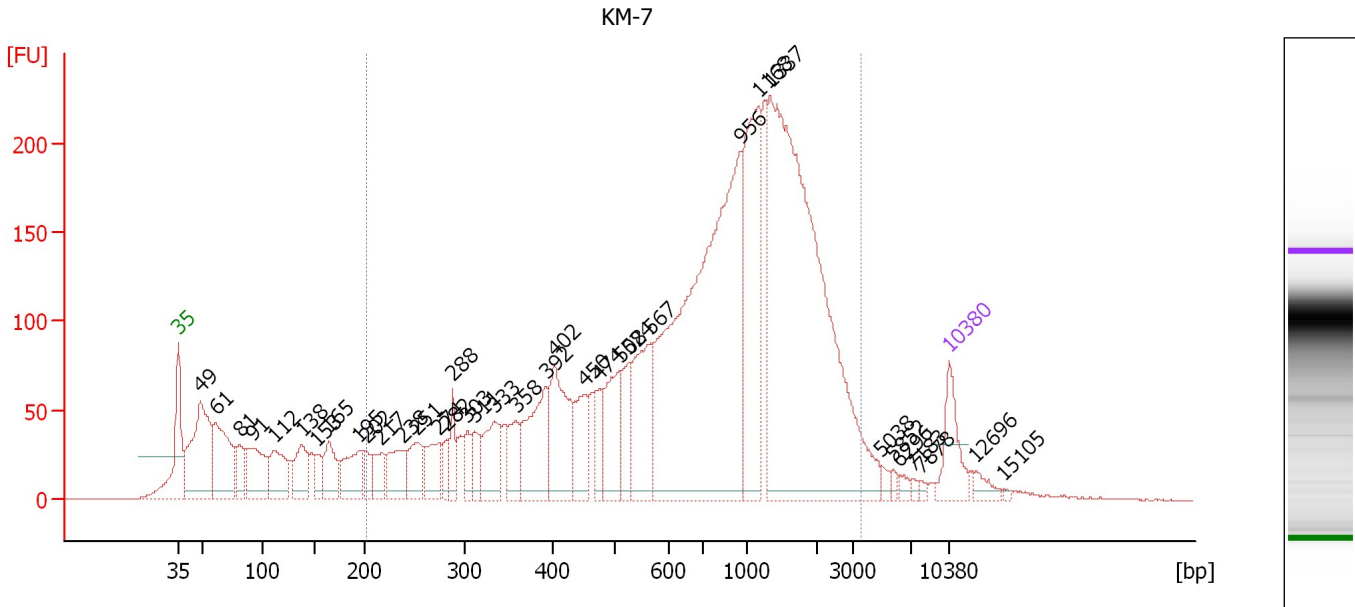
Region table for sample 6 : KM-6 1:4

From [bp]	To [bp]	Average Size [bp]	Molarity [pmol/l]	Conc. [pg/μl]	Corr. Area	% of Total	Size distribution in CV [%]	Color
117	1,990	529	23,059.3	5,133.22	3,350.4	93	59.4	

Assay Class: High Sensitivity DNA Assay
 Data Path: C:\...ents and Settings\Bioanalyzer\2012-11-15\2012-11-15_002.xad

Created: 11/15/2012 10:04:13 AM
 Modified: 11/15/2012 11:16:09 AM

Electropherogram Summary Continued ...



Overall Results for sample 7 : KM-7

Number of peaks found: 37 Corr. Area 1: 4,658.7
 Noise: 0.4

Peak table for sample 7 : KM-7

Peak	Size [bp]	Conc. [pg/μl]	Molarity [pmol/l]	Observations
1	35	125.00	5,411.3	Lower Marker
2	49	376.51	11,679.1	
3	61	254.48	6,336.6	
4	81	80.70	1,512.4	
5	91	164.84	2,756.0	
6	112	141.32	1,912.7	
7	138	107.70	1,182.1	
8	153	45.85	453.4	
9	165	101.79	935.9	
10	195	115.64	899.4	
11	202	43.91	329.9	
12	217	62.77	439.2	
13	238	100.76	642.0	
14	251	94.87	572.4	
15	274	87.55	484.2	
16	282	41.46	222.8	
17	288	53.67	282.0	
18	303	47.60	238.0	
19	311	56.15	273.2	
20	333	119.71	544.5	
21	358	80.64	341.5	
22	392	190.74	738.2	
23	402	199.44	752.4	
24	450	105.97	357.2	
25	474	59.61	190.4	
26	508	144.67	431.4	

Assay Class: High Sensitivity DNA Assay
 Data Path: C:\...ents and Settings\Bioanalyzer\2012-11-15\2012-11-15_002.xad

Created: 11/15/2012 10:04:13 AM
 Modified: 11/15/2012 11:16:09 AM

Electropherogram Summary Continued ...

... Peak table for sample 7 : KM-7

Peak	Size [bp]	Conc. [pg/μl]	Molarity [pmol/l]	Observations
27	524	87.28	252.2	
28	567	195.74	523.0	
29	956	1,042.88	1,653.0	
30	1,168	341.94	443.6	
31	1,337	1,127.83	1,278.0	
32	5,038	12.40	3.7	
33	5,852	7.62	2.0	
34	6,296	11.11	2.7	
35	7,183	5.45	1.1	
36	7,878	5.93	1.1	
37	10,380	75.00	10.9	Upper Marker
38	12,696	0.00	0.0	
39	15,105	0.00	0.0	

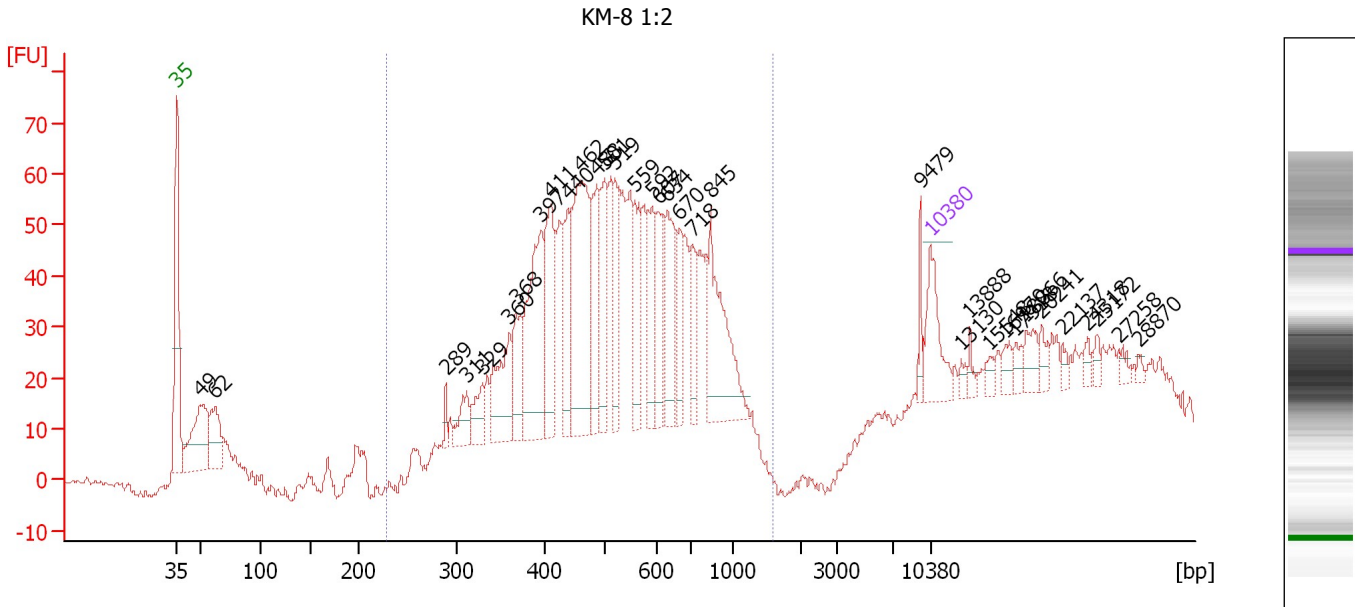
Region table for sample 7 : KM-7

From [bp]	To [bp]	Average Size [bp]	Molarity [pmol/l]	Conc. [pg/μl]	Corr. Area	% of Total	Size distribution in CV [%]	Color
203	3,655	1,025	12,001.2	4,535.63	4,658.7	80	64.8	

Assay Class: High Sensitivity DNA Assay
 Data Path: C:\...ents and Settings\Bioanalyzer\2012-11-15\2012-11-15_002.xad

Created: 11/15/2012 10:04:13 AM
 Modified: 11/15/2012 11:16:09 AM

Electropherogram Summary Continued ...



Overall Results for sample 8 : KM-8 1:2

Number of peaks found: 34 Corr. Area 1: 1,164.2
 Noise: 0.8

Peak table for sample 8 : KM-8 1:2

Peak	Size [bp]	Conc. [pg/μl]	Molarity [pmol/l]	Observations
1	35	125.00	5,411.3	Lower Marker
2	49	212.91	6,561.1	
3	62	115.31	2,837.0	
4	289	16.04	84.2	
5	311	51.27	249.6	
6	329	53.96	248.4	
7	360	134.70	567.0	
8	368	99.26	408.7	
9	397	246.69	941.7	
10	411	173.17	637.8	
11	440	109.75	377.7	
12	462	304.45	998.2	
13	488	147.65	458.9	
14	501	125.86	380.8	
15	519	105.50	307.7	
16	559	103.26	279.9	
17	592	89.80	229.8	
18	607	99.69	248.8	
19	634	115.67	276.5	
20	670	73.87	167.0	
21	718	66.46	140.2	
22	845	191.44	343.4	
23	9,479	21.64	3.5	
24	10,380	75.00	10.9	Upper Marker
25	13,130	0.00	0.0	
26	13,888	0.00	0.0	

Assay Class: High Sensitivity DNA Assay
 Data Path: C:\...ents and Settings\Bioanalyzer\2012-11-15\2012-11-15_002.xad


Created: 11/15/2012 10:04:13 AM
 Modified: 11/15/2012 11:16:09 AM

Electropherogram Summary Continued ...

... Peak table for sample 8 : KM-8 1:2

Peak	Size [bp]	Conc. [pg/μl]	Molarity [pmol/l]	Observations
27	15,548	0.00	0.0	
28	16,970	0.00	0.0	
29	17,918	0.00	0.0	
30	18,866	0.00	0.0	
31	20,241	0.00	0.0	
32	22,137	0.00	0.0	
33	24,318	0.00	0.0	
34	25,172	0.00	0.0	
35	27,258	0.00	0.0	
36	28,870	0.00	0.0	

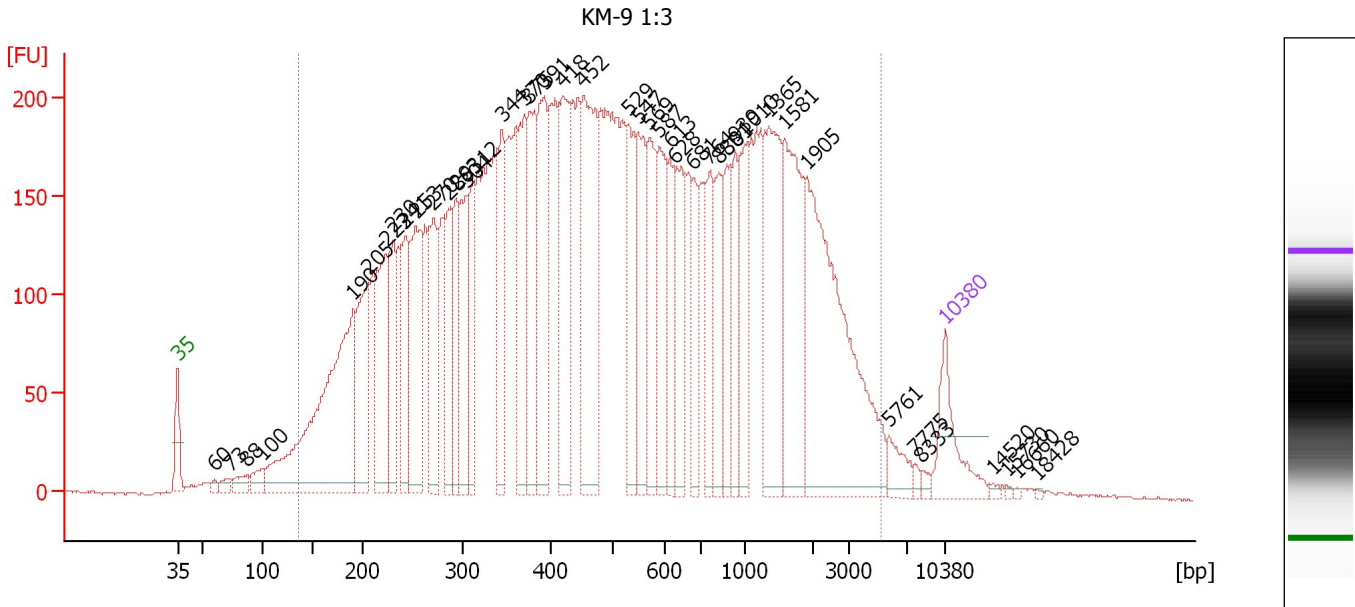
Region table for sample 8 : KM-8 1:2

From [bp]	To [bp]	Average Size [bp]	Molarity [pmol/l]	Conc. [pg/μl]	Corr. Area	% of Total	Size distribution in CV [%]	Color
227	1,598	547	10,111.0	3,252.66	1,164.2	79	31.1	

Assay Class: High Sensitivity DNA Assay
 Data Path: C:\...ents and Settings\Bioanalyzer\2012-11-15\2012-11-15_002.xad

Created: 11/15/2012 10:04:13 AM
 Modified: 11/15/2012 11:16:09 AM

Electropherogram Summary Continued ...



Overall Results for sample 9 : KM-9 1:3

Number of peaks found: 43 Corr. Area 1: 9,964.4
 Noise: 0.8

Peak table for sample 9 : KM-9 1:3

Peak	Size [bp]	Conc. [pg/μl]	Molarity [pmol/l]	Observations
1	35	125.00	5,411.3	Lower Marker
2	60	10.42	262.8	
3	73	17.75	368.2	
4	88	30.20	521.4	
5	100	32.16	485.8	
6	190	632.25	5,048.8	
7	205	218.58	1,614.5	
8	223	223.71	1,521.7	
9	230	155.97	1,026.5	
10	241	146.80	921.3	
11	253	245.17	1,470.4	
12	270	174.12	976.2	
13	286	136.94	726.2	
14	293	128.49	664.0	
15	304	166.09	828.4	
16	312	129.25	627.2	
17	344	159.33	701.2	
18	370	189.69	776.2	
19	375	192.16	776.2	
20	391	221.52	857.5	
21	418	216.38	784.5	
22	452	325.82	1,091.6	
23	529	145.32	416.3	
24	547	146.97	406.8	
25	569	139.87	372.6	
26	587	154.85	399.6	

Assay Class: High Sensitivity DNA Assay
 Data Path: C:\...ents and Settings\Bioanalyzer\2012-11-15\2012-11-15_002.xad


Created: 11/15/2012 10:04:13 AM
 Modified: 11/15/2012 11:16:09 AM

Electropherogram Summary Continued ...

... Peak table for sample 9 : KM-9 1:3

Peak	Size [bp]	Conc. [pg/μl]	Molarity [pmol/l]	Observations
27	613	91.35	225.8	
28	628	130.88	315.6	
29	681	86.98	193.6	
30	764	110.98	220.1	
31	830	107.42	196.2	
32	881	87.95	151.3	
33	939	87.55	141.3	
34	1,010	105.62	158.5	
35	1,365	212.22	235.6	
36	1,581	222.53	213.2	
37	1,905	423.98	337.2	
38	5,761	32.72	8.6	
39	7,775	5.62	1.1	
40	8,333	6.60	1.2	
41	10,380	75.00	10.9	Upper Marker
42	14,520	0.00	0.0	
43	15,730	0.00	0.0	
44	16,660	0.00	0.0	
45	18,428	0.00	0.0	

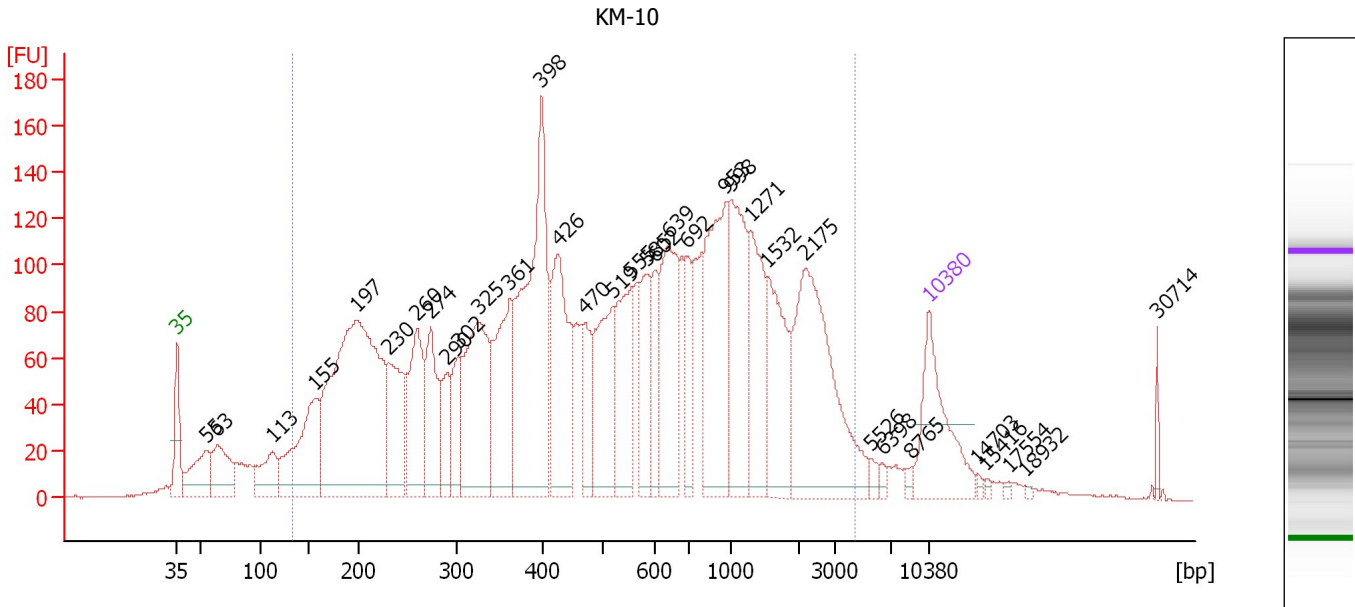
Region table for sample 9 : KM-9 1:3

From [bp]	To [bp]	Average Size [bp]	Molarity [pmol/l]	Conc. [pg/μl]	Corr. Area	% of Total	Size distribution in CV [%]	Color
137	5,192	767	33,096.5	8,169.49	9,964.4	97	97.5	

Assay Class: High Sensitivity DNA Assay
 Data Path: C:\...ents and Settings\Bioanalyzer\2012-11-15\2012-11-15_002.xad

Created: 11/15/2012 10:04:13 AM
 Modified: 11/15/2012 11:16:09 AM

Electropherogram Summary Continued ...



Overall Results for sample 10 : KM-10

Number of peaks found: 34 Corr. Area 1: 5,275.9
 Noise: 0.5

Peak table for sample 10 : KM-10

Peak	Size [bp]	Conc. [pg/μl]	Molarity [pmol/l]	Observations
1	35	125.00	5,411.3	Lower Marker
2	55	73.08	2,019.9	
3	63	75.46	1,801.3	
4	113	58.66	784.4	
5	155	156.55	1,529.4	
6	197	495.29	3,805.0	
7	230	111.56	733.5	
8	260	114.37	666.8	
9	274	90.67	502.3	
10	290	43.95	229.3	
11	302	49.93	250.4	
12	325	169.48	790.2	
13	361	131.67	552.1	
14	398	285.43	1,085.5	
15	426	147.72	525.6	
16	470	45.09	145.5	
17	519	111.31	324.8	
18	555	96.39	263.3	
19	585	62.36	161.6	
20	602	41.45	104.3	
21	639	121.16	287.5	
22	692	44.43	97.3	
23	953	153.60	244.1	
24	998	121.22	184.1	
25	1,271	88.89	105.9	
26	1,532	83.59	82.7	

Assay Class: High Sensitivity DNA Assay
 Data Path: C:\...ents and Settings\Bioanalyzer\2012-11-15\2012-11-15_002.xad


Created: 11/15/2012 10:04:13 AM
 Modified: 11/15/2012 11:16:09 AM

Electropherogram Summary Continued ...

... Peak table for sample 10 : KM-10

Peak	Size [bp]	Conc. [pg/μl]	Molarity [pmol/l]	Observations
27	2,175	180.46	125.7	
28	5,526	6.20	1.7	
29	6,398	3.91	0.9	
30	8,765	4.01	0.7	
31	10,380	75.00	10.9	Upper Marker
32	14,703	0.00	0.0	
33	15,416	0.00	0.0	
34	17,554	0.00	0.0	
35	18,932	0.00	0.0	
36	30,714	0.00	0.0	

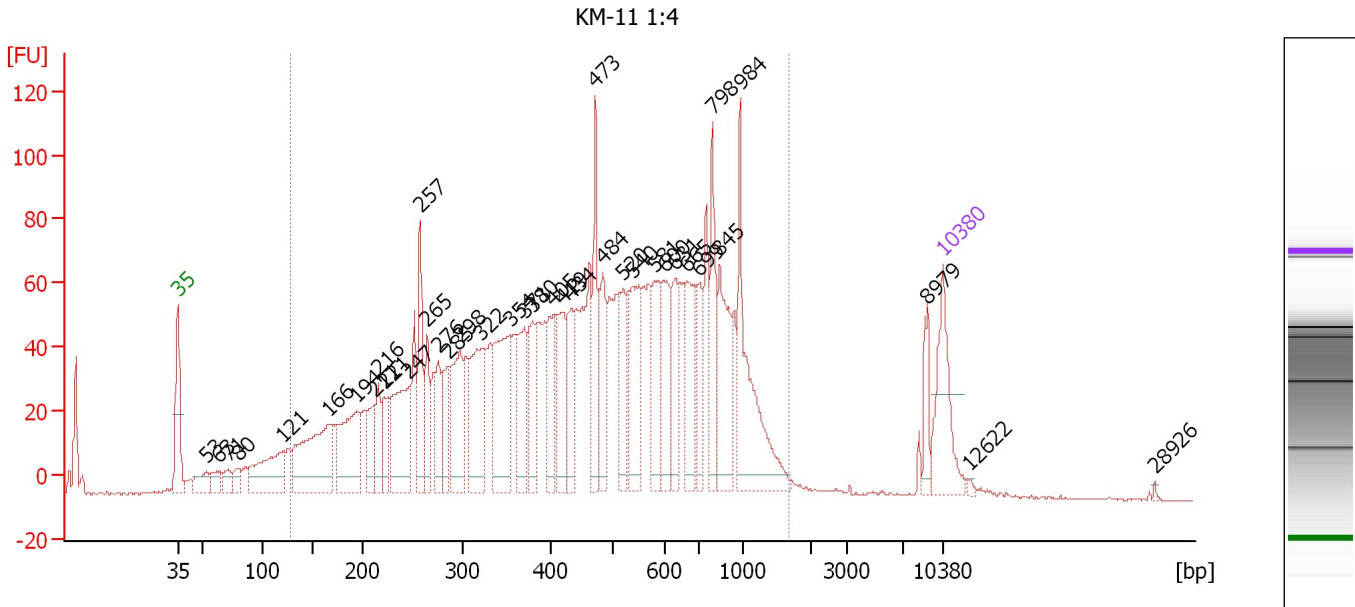
Region table for sample 10 : KM-10

From [bp]	To [bp]	Average Size [bp]	Molarity [pmol/l]	Conc. [pg/μl]	Corr. Area	% of Total	Size distribution in CV [%]	Color
134	4,424	787	13,177.1	3,142.98	5,275.9	91	90.8	

Assay Class: High Sensitivity DNA Assay
 Data Path: C:\...ents and Settings\Bioanalyzer\2012-11-15\2012-11-15_002.xad

Created: 11/15/2012 10:04:13 AM
 Modified: 11/15/2012 11:16:09 AM

Electropherogram Summary Continued ...



Overall Results for sample 11 : KM-11 1:4

Number of peaks found: 38 Corr. Area 1: 2,033.1
 Noise: 0.3

Peak table for sample 11 : KM-11 1:4

Peak	Size [bp]	Conc. [pg/μl]	Molarity [pmol/l]	Observations
1	35	125.00	5,411.3	Lower Marker
2	53	35.28	999.1	
3	63	25.42	612.2	
4	71	21.31	455.0	
5	80	21.96	416.3	
6	121	126.21	1,585.2	
7	166	205.70	1,877.1	
8	194	139.07	1,085.1	
9	211	55.20	396.8	
10	216	50.17	352.6	
11	221	48.87	334.4	
12	247	142.16	873.3	
13	257	90.04	530.0	
14	265	59.50	340.3	
15	276	55.62	305.8	
16	285	58.30	309.7	
17	298	108.87	554.3	
18	322	121.47	572.4	
19	354	148.42	634.7	
20	371	79.64	325.5	
21	380	67.74	270.2	
22	405	72.03	269.5	
23	419	86.07	311.4	
24	434	68.16	237.8	
25	473	92.05	294.8	
26	484	73.99	231.5	

Assay Class: High Sensitivity DNA Assay
 Data Path: C:\...ents and Settings\Bioanalyzer\2012-11-15\2012-11-15_002.xad

Created: 11/15/2012 10:04:13 AM
 Modified: 11/15/2012 11:16:09 AM

Electropherogram Summary Continued ...

... Peak table for sample 11 : KM-11 1:4

Peak	Size [bp]	Conc. [pg/μl]	Molarity [pmol/l]	Observations
27	520	60.31	175.6	
28	540	96.41	270.6	
29	581	75.48	196.9	
30	600	77.50	195.6	
31	631	69.26	166.2	
32	665	94.72	215.7	
33	699	55.84	120.9	
34	798	75.08	142.6	
35	845	103.43	185.4	
36	984	152.52	234.8	
37	8,979	27.47	4.6	
38	▶ 10,380	75.00	10.9	Upper Marker
39	12,622	0.00	0.0	
40	28,926	0.00	0.0	

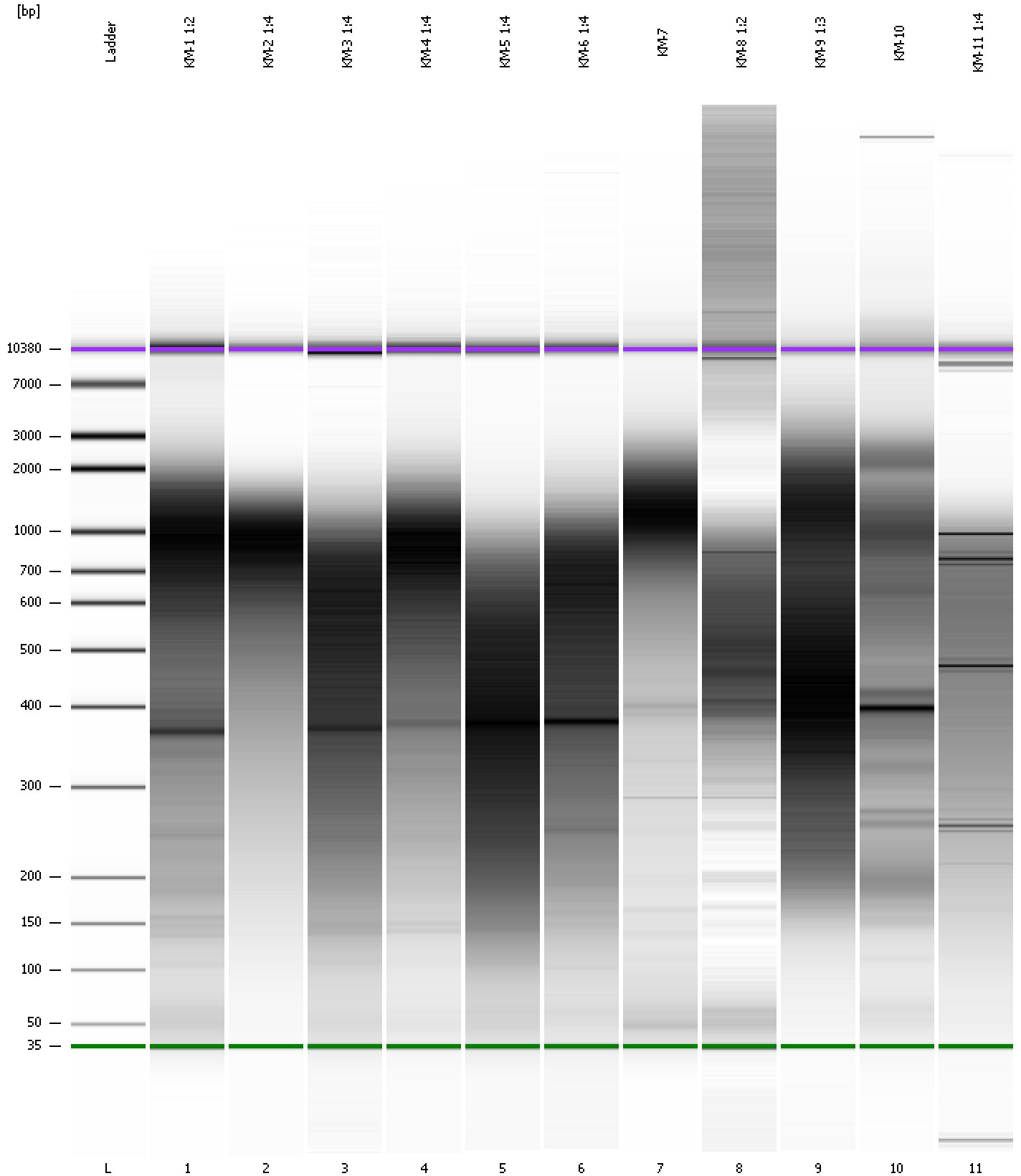
Region table for sample 11 : KM-11 1:4

From [bp]	To [bp]	Average Size [bp]	Molarity [pmol/l]	Conc. [pg/μl]	Corr. Area	% of Total	Size distribution in CV [%]	Color
129	1,674	534	10,021.4	2,647.93	2,033.1	98	44.9	■

Assay Class: High Sensitivity DNA Assay
Data Path: C:\...ents and Settings\Bioanalyzer\2012-11-15\2012-11-15_002.xad

Created: 11/15/2012 10:04:13 AM
Modified: 11/15/2012 11:16:09 AM

Gel Image



Assay Class: High Sensitivity DNA Assay
 Data Path: C:\...ents and Settings\Bioanalyzer\2012-11-15\2012-11-15_002.xad

Created: 11/15/2012 10:04:13 AM
 Modified: 11/15/2012 11:16:09 AM

Run Logbook

Description	Number	Source	Category	Sub Category	Time	Time Zone	User	Host
Run ended on port 1 (Number of wells acquired: 12)		Instrument	Run		11/15/2012 10:45:32 AM	(GMT --08:00) Pacific Standard Time	UC Davis	D8XSMGH1
Run started on port 1 (File: C:\Documents and Settings\Bioanalyzer\2012-11-15\2012-11-15_002.xad)		Instrument	Run		11/15/2012 10:04:18 AM	(GMT --08:00) Pacific Standard Time	UC Davis	D8XSMGH1
Product Number : G2938B		Instrument	Run		11/15/2012 10:04:18 AM	(GMT --08:00) Pacific Standard Time	UC Davis	D8XSMGH1
Name :		Instrument	Run		11/15/2012 10:04:18 AM	(GMT --08:00) Pacific Standard Time	UC Davis	D8XSMGH1
Vendor : Agilent Technologies		Instrument	Run		11/15/2012 10:04:18 AM	(GMT --08:00) Pacific Standard Time	UC Davis	D8XSMGH1
Serial# : DE13701086		Instrument	Run		11/15/2012 10:04:18 AM	(GMT --08:00) Pacific Standard Time	UC Davis	D8XSMGH1
Firmware : C.01.069		Instrument	Run		11/15/2012 10:04:18 AM	(GMT --08:00) Pacific Standard Time	UC Davis	D8XSMGH1
Cartridge : Electrode		Instrument	Run		11/15/2012 10:04:18 AM	(GMT --08:00) Pacific Standard Time	UC Davis	D8XSMGH1