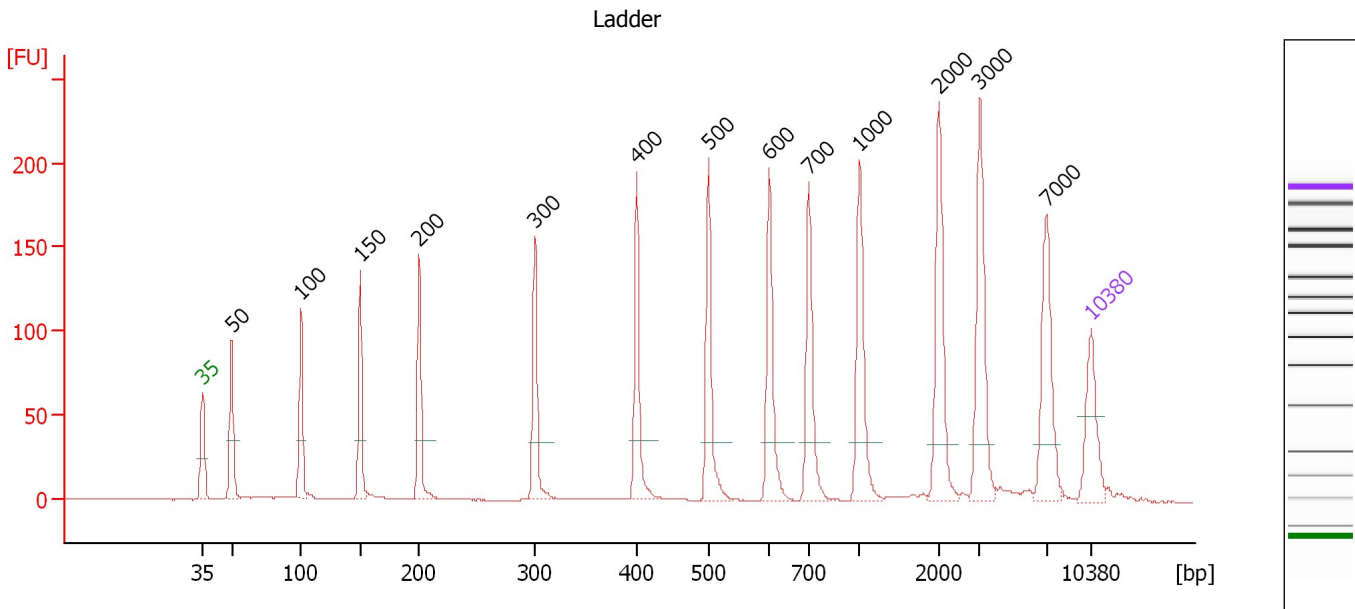


Assay Class: High Sensitivity DNA Assay
 Data Path: C:\...ents and Settings\Bioanalyzer\2012-11-19\2012-11-19_001.xad

Created: 11/19/2012 9:51:08 AM
 Modified: 11/19/2012 10:30:31 AM

Electropherogram Summary



Overall Results for Ladder

Noise: 0.1

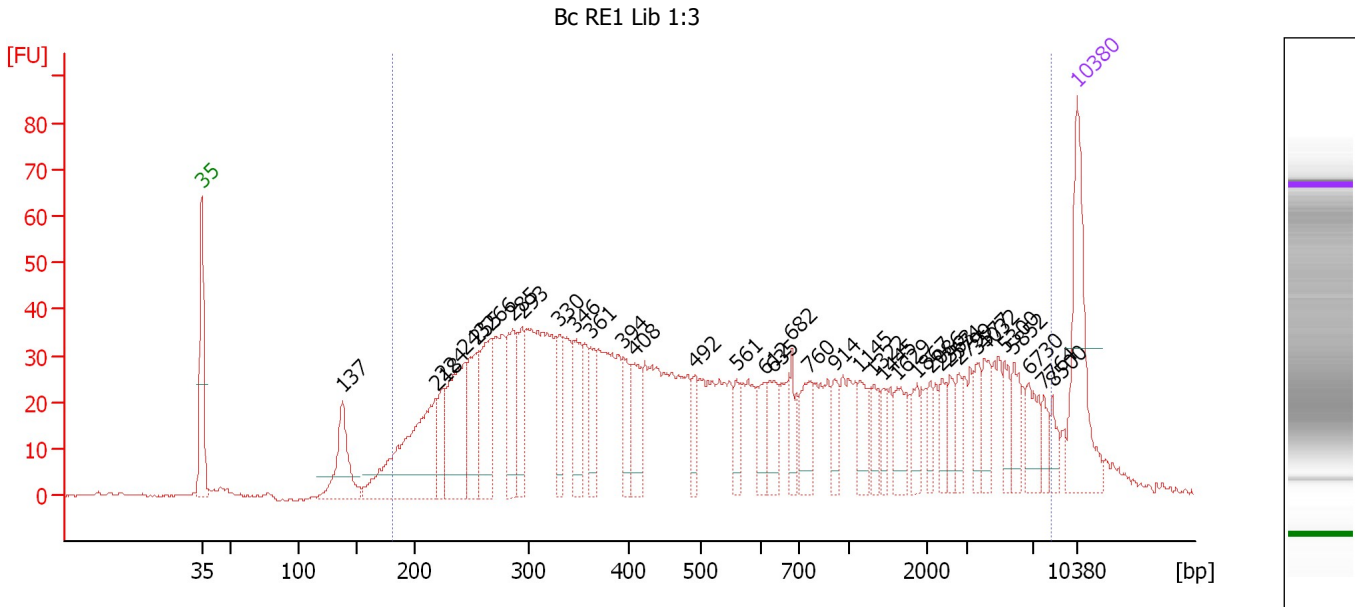
Peak table for Ladder

Peak	Size [bp]	Conc. [pg/μl]	Molarity [pmol/l]	Observations
1	35	125.00	5,411.3	Lower Marker
2	50	150.00	4,545.5	Ladder Peak
3	100	150.00	2,272.7	Ladder Peak
4	150	150.00	1,515.2	Ladder Peak
5	200	150.00	1,136.4	Ladder Peak
6	300	150.00	757.6	Ladder Peak
7	400	150.00	568.2	Ladder Peak
8	500	150.00	454.5	Ladder Peak
9	600	150.00	378.8	Ladder Peak
10	700	150.00	324.7	Ladder Peak
11	1,000	150.00	227.3	Ladder Peak
12	2,000	150.00	113.6	Ladder Peak
13	3,000	150.00	75.8	Ladder Peak
14	7,000	150.00	32.5	Ladder Peak
15	10,380	75.00	10.9	Upper Marker

Assay Class: High Sensitivity DNA Assay
 Data Path: C:\...ents and Settings\Bioanalyzer\2012-11-19\2012-11-19_001.xad

Created: 11/19/2012 9:51:08 AM
 Modified: 11/19/2012 10:30:31 AM

Electropherogram Summary Continued ...



Overall Results for sample 1 : Bc RE1 Lib 1:3

Number of peaks found: 36 Corr. Area 1: 1,753.7
 Noise: 0.3

Peak table for sample 1 : Bc RE1 Lib 1:3

Peak	Size [bp]	Conc. [pg/μl]	Molarity [pmol/l]	Observations
1	35	125.00	5,411.3	Lower Marker
2	137	78.04	863.0	
3	218	172.67	1,198.3	
4	224	37.02	250.5	
5	243	112.17	698.0	
6	255	66.69	396.8	
7	266	86.17	490.3	
8	285	61.90	329.1	
9	293	42.05	217.2	
10	330	36.94	169.7	
11	346	50.09	219.5	
12	361	34.14	143.1	
13	394	28.93	111.1	
14	408	39.14	145.3	
15	492	21.47	66.2	
16	561	18.50	49.9	
17	612	23.82	59.0	
18	635	29.72	70.9	
19	682	19.94	44.3	
20	760	34.14	68.0	
21	914	17.74	29.4	
22	1,145	23.61	31.3	
23	1,322	16.11	18.5	
24	1,445	12.59	13.2	
25	1,629	24.75	23.0	
26	1,867	16.72	13.6	

Assay Class: High Sensitivity DNA Assay
 Data Path: C:\...ents and Settings\Bioanalyzer\2012-11-19\2012-11-19_001.xad

Created: 11/19/2012 9:51:08 AM
 Modified: 11/19/2012 10:30:31 AM

Electropherogram Summary Continued ...

... Peak table for sample 1 : Bc RE1 Lib 1:3

Peak	Size [bp]	Conc. [pg/µl]	Molarity [pmol/l]	Observations
27	2,086	11.64	8.5	
28	2,363	12.84	8.2	
29	2,574	15.75	9.3	
30	2,799	12.25	6.6	
31	3,577	15.32	6.5	
32	4,032	18.85	7.1	
33	5,300	15.92	4.6	
34	5,852	17.89	4.6	
35	6,730	22.71	5.1	
36	7,764	10.19	2.0	
37	8,500	11.14	2.0	
38	10,380	75.00	10.9	Upper Marker

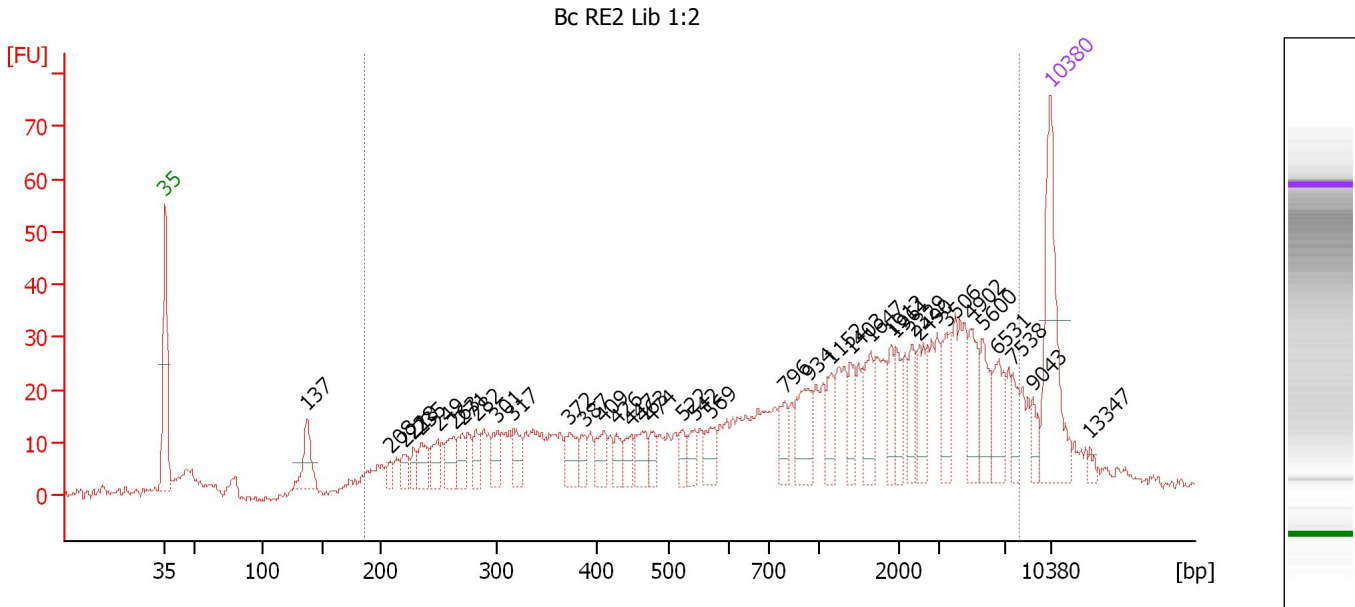
Region table for sample 1 : Bc RE1 Lib 1:3

From [bp]	To [bp]	Average Size [bp]	Molarity [pmol/l]	Conc. [pg/µl]	Corr. Area	% of Total	Size distribution in CV [%]	Color
181	8,420	1,269	7,908.0	2,080.35	1,753.7	94	100.0	

Assay Class: High Sensitivity DNA Assay
 Data Path: C:\...ents and Settings\Bioanalyzer\2012-11-19\2012-11-19_001.xad

Created: 11/19/2012 9:51:08 AM
 Modified: 11/19/2012 10:30:31 AM

Electropherogram Summary Continued ...



Overall Results for sample 2 : Bc RE2 Lib 1:2

Number of peaks found: 37 Corr. Area 1: 942.3
 Noise: 0.8

Peak table for sample 2 : Bc RE2 Lib 1:2

Peak	Size [bp]	Conc. [pg/μl]	Molarity [pmol/l]	Observations
1	35	125.00	5,411.3	Lower Marker
2	137	41.46	458.8	
3	208	8.77	63.8	
4	221	15.20	104.5	
5	228	12.13	80.5	
6	235	21.82	140.8	
7	249	21.25	129.2	
8	263	22.74	131.0	
9	271	19.14	107.2	
10	282	16.80	90.3	
11	301	20.92	105.4	
12	317	21.04	100.7	
13	372	23.89	97.2	
14	387	13.08	51.2	
15	409	19.63	72.8	
16	426	12.75	45.3	
17	447	14.87	50.4	
18	463	20.08	65.8	
19	474	12.61	40.3	
20	522	11.96	34.7	
21	542	12.53	35.0	
22	569	18.82	50.2	
23	796	18.31	34.8	
24	934	35.52	57.6	
25	1,152	18.75	24.7	
26	1,403	18.34	19.8	

Assay Class: High Sensitivity DNA Assay
 Data Path: C:\...ents and Settings\Bioanalyzer\2012-11-19\2012-11-19_001.xad

Created: 11/19/2012 9:51:08 AM
 Modified: 11/19/2012 10:30:31 AM

Electropherogram Summary Continued ...

... Peak table for sample 2 : Bc RE2 Lib 1:2

Peak	Size [bp]	Conc. [pg/μl]	Molarity [pmol/l]	Observations
27	1,647	27.14	25.0	
28	1,912	16.20	12.8	
29	1,961	17.16	13.3	
30	2,329	18.54	12.1	
31	2,490	25.01	15.2	
32	3,506	25.36	11.0	
33	4,902	27.67	8.6	
34	5,600	25.07	6.8	
35	6,531	25.55	5.9	
36	7,538	12.37	2.5	
37	9,043	10.31	1.7	
38	10,380	75.00	10.9	Upper Marker
39	13,347	0.00	0.0	

Region table for sample 2 : Bc RE2 Lib 1:2

From [bp]	To [bp]	Average Size [bp]	Molarity [pmol/l]	Conc. [pg/μl]	Corr. Area	% of Total	Size distribution in CV [%]	Color
187	8,007	1,870	3,694.4	1,289.50	942.3	88	100.0	