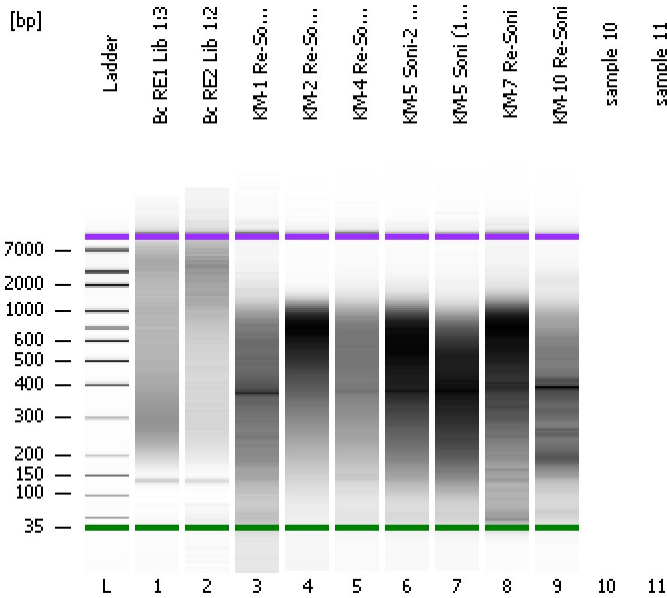


Assay Class: High Sensitivity DNA Assay  
Data Path: C:\...ents and Settings\Bioanalyzer\2012-11-19\2012-11-19\_001.xad

Created: 11/19/2012 9:51:08 AM  
Modified: 11/19/2012 10:30:31 AM

**Electrophoresis File Run Summary**



Instrument Information:

Instrument Name: DE13701086      Firmware: C.01.069  
Serial#: DE13701086      Type: G2938B

Assay Information:

Assay Origin Path: C:\Program Files\Agilent\2100 bioanalyzer\2100 expert\assays\dsDNA\High Sensitivity DNA.xsy  
Assay Class: High Sensitivity DNA Assay  
Version: 1.03  
Assay Comments: Copyright © 2003-2010 Agilent Technologies

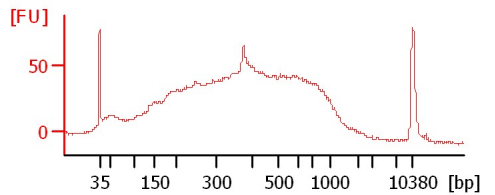
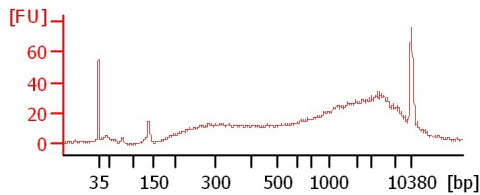
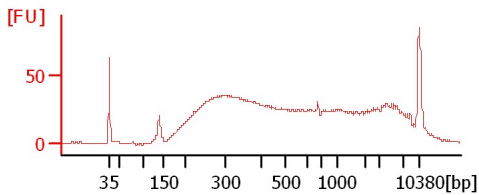
Chip Information:

Chip Lot #:   
Reagent Kit Lot #:   
Chip Comments:

**Bc RE1 Lib 1:3**

**Bc RE2 Lib 1:2**

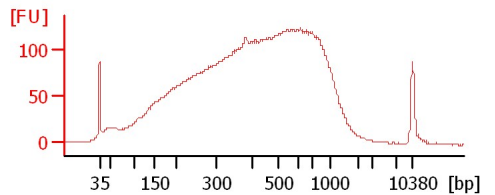
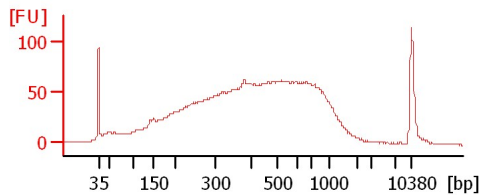
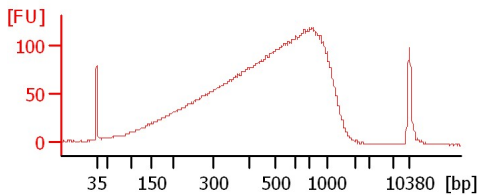
**KM-1 Re-Soni 1:2**



**KM-2 Re-Soni 1:4**

**KM-4 Re-Soni 1:4**

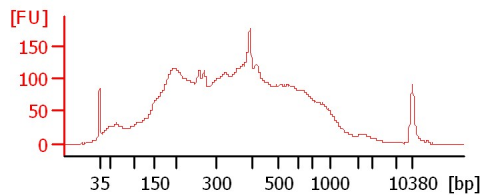
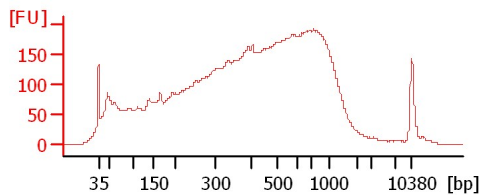
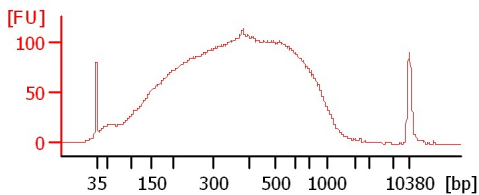
**KM-5 Soni-2 1:4**



**KM-5 Soni (11/14/12)1:4**

**KM-7 Re-Soni**

**KM-10 Re-Soni**



Assay Class: High Sensitivity DNA Assay  
 Data Path: C:\...ents and Settings\Bioanalyzer\2012-11-19\2012-11-19\_001.xad

Created: 11/19/2012 9:51:08 AM  
 Modified: 11/19/2012 10:30:31 AM

**Electrophoresis File Run Summary (Chip Summary)**

Sample Name	Sample Comment	Rest. Digest	Status	Observation	Result Label	Result Color
Bc RE1 Lib 1:3		<input type="checkbox"/>	✓			
Bc RE2 Lib 1:2		<input type="checkbox"/>	✓			
KM-1 Re-Soni 1:2		<input type="checkbox"/>	✓			
KM-2 Re-Soni 1:4		<input type="checkbox"/>	✓			
KM-4 Re-Soni 1:4		<input type="checkbox"/>	✓			
KM-5 Soni-2 1:4		<input type="checkbox"/>	✓			
KM-5 Soni (11/14/12)1:4		<input type="checkbox"/>	✓			
KM-7 Re-Soni		<input type="checkbox"/>	✓			
KM-10 Re-Soni		<input type="checkbox"/>	✓			
sample 10		<input type="checkbox"/>				
sample 11		<input type="checkbox"/>				
Ladder		<input type="checkbox"/>	✓			

**Chip Lot #**

**Reagent Kit Lot #**

**Chip Comments :**

Assay Class: High Sensitivity DNA Assay  
 Data Path: C:\...ents and Settings\Bioanalyzer\2012-11-19\2012-11-19\_001.xad

Created: 11/19/2012 9:51:08 AM  
 Modified: 11/19/2012 10:30:31 AM

**Electrophoresis Assay Details**

**General Analysis Settings**

Number of Available Sample and Ladder Wells (Max.) : 12  
 Minimum Visible Range [s] : 32  
 Maximum Visible Range [s] : 138  
 Start Analysis Time Range [s] : 33  
 End Analysis Time Range [s] : 137.5  
 Ladder Concentration [pg/μl] : 1950  
 Uses Standard Area for Ladder Fragments  
 Lower Marker Concentration [pg/μl] : 125  
 Upper Marker Concentration [pg/μl] : 75  
 Used Upper Marker for Quantitation  
 Standard Curve Fit is Point to Point  
 Show Data Aligned to Lower and Upper Marker

**Integrator Settings**

Integration Start Time [s] : 33.05  
 Integration End Time [s] : 137  
 Slope Threshold : 0.8  
 Height Threshold [FU] : 5  
 Area Threshold : 0.1  
 Width Threshold [s] : 0.6  
 Baseline Plateau [s] : 0.5

**Filter Settings**

Filter Width [s] : 0.5  
 Polynomial Order : 4

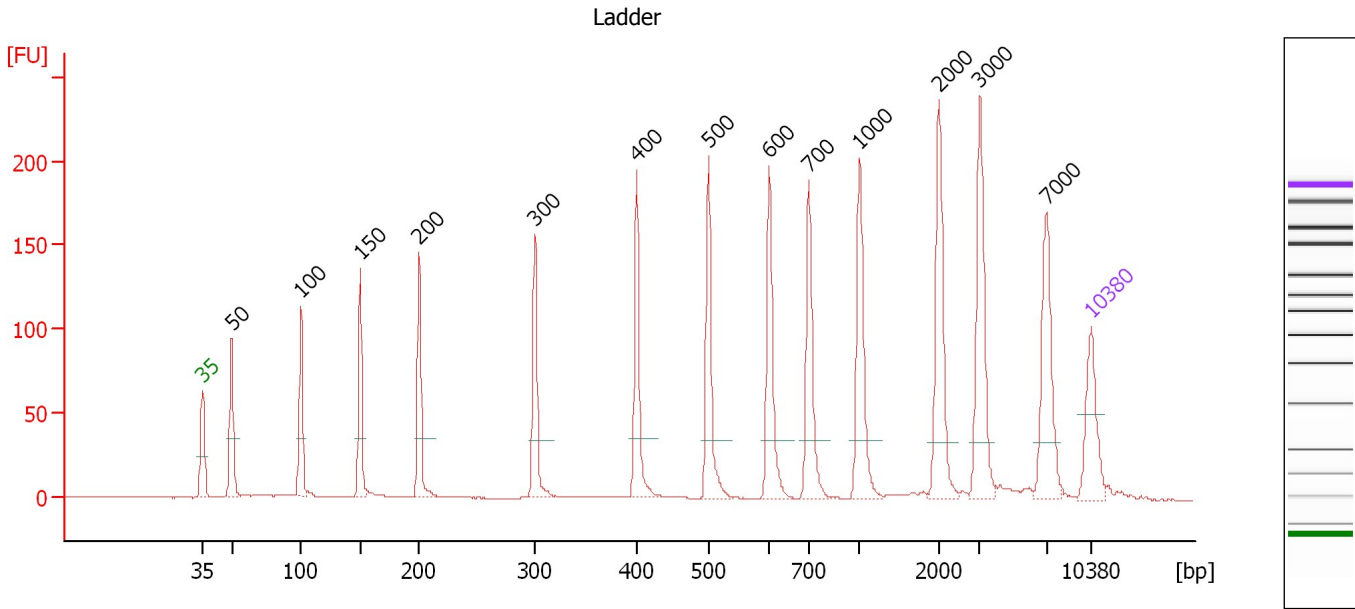
**Ladder**

Ladder Peak	Size	Area
1	35	160
2	50	210
3	100	208
4	150	221
5	200	242
6	300	270
7	400	305
8	500	306
9	600	336
10	700	321
11	1000	366
12	2000	413
13	3000	411
14	7000	400
15	10380	214

Assay Class: High Sensitivity DNA Assay  
 Data Path: C:\...ents and Settings\Bioanalyzer\2012-11-19\2012-11-19\_001.xad

Created: 11/19/2012 9:51:08 AM  
 Modified: 11/19/2012 10:30:31 AM

**Electropherogram Summary**



**Overall Results for Ladder**

Noise: 0.1

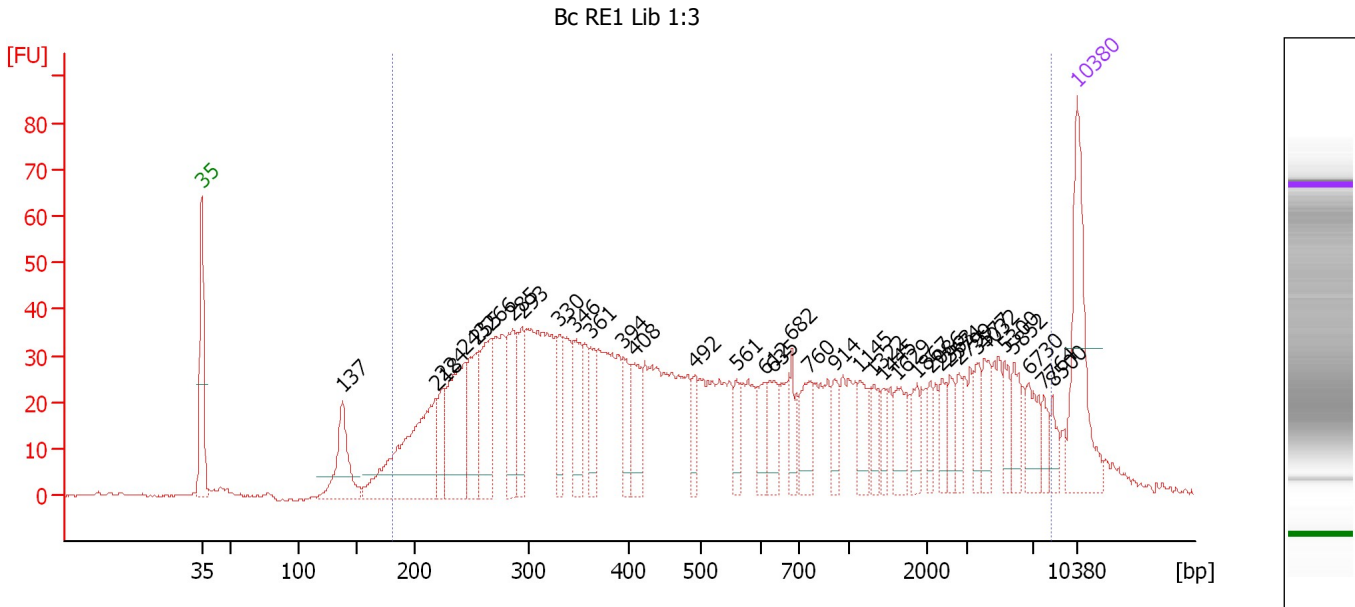
**Peak table for Ladder**

Peak	Size [bp]	Conc. [pg/μl]	Molarity [pmol/l]	Observations
1	35	125.00	5,411.3	Lower Marker
2	50	150.00	4,545.5	Ladder Peak
3	100	150.00	2,272.7	Ladder Peak
4	150	150.00	1,515.2	Ladder Peak
5	200	150.00	1,136.4	Ladder Peak
6	300	150.00	757.6	Ladder Peak
7	400	150.00	568.2	Ladder Peak
8	500	150.00	454.5	Ladder Peak
9	600	150.00	378.8	Ladder Peak
10	700	150.00	324.7	Ladder Peak
11	1,000	150.00	227.3	Ladder Peak
12	2,000	150.00	113.6	Ladder Peak
13	3,000	150.00	75.8	Ladder Peak
14	7,000	150.00	32.5	Ladder Peak
15	10,380	75.00	10.9	Upper Marker

Assay Class: High Sensitivity DNA Assay  
 Data Path: C:\...ents and Settings\Bioanalyzer\2012-11-19\2012-11-19\_001.xad

Created: 11/19/2012 9:51:08 AM  
 Modified: 11/19/2012 10:30:31 AM

**Electropherogram Summary Continued ...**



**Overall Results for sample 1 : Bc RE1 Lib 1:3**

Number of peaks found: 36                      Corr. Area 1: 1,753.7  
 Noise: 0.3

**Peak table for sample 1 : Bc RE1 Lib 1:3**

Peak	Size [bp]	Conc. [pg/μl]	Molarity [pmol/l]	Observations
1	35	125.00	5,411.3	Lower Marker
2	137	78.04	863.0	
3	218	172.67	1,198.3	
4	224	37.02	250.5	
5	243	112.17	698.0	
6	255	66.69	396.8	
7	266	86.17	490.3	
8	285	61.90	329.1	
9	293	42.05	217.2	
10	330	36.94	169.7	
11	346	50.09	219.5	
12	361	34.14	143.1	
13	394	28.93	111.1	
14	408	39.14	145.3	
15	492	21.47	66.2	
16	561	18.50	49.9	
17	612	23.82	59.0	
18	635	29.72	70.9	
19	682	19.94	44.3	
20	760	34.14	68.0	
21	914	17.74	29.4	
22	1,145	23.61	31.3	
23	1,322	16.11	18.5	
24	1,445	12.59	13.2	
25	1,629	24.75	23.0	
26	1,867	16.72	13.6	

Assay Class: High Sensitivity DNA Assay  
 Data Path: C:\...ents and Settings\Bioanalyzer\2012-11-19\2012-11-19\_001.xad

Created: 11/19/2012 9:51:08 AM  
 Modified: 11/19/2012 10:30:31 AM

**Electropherogram Summary Continued ...**

**... Peak table for sample 1 : Bc RE1 Lib 1:3**

Peak	Size [bp]	Conc. [pg/µl]	Molarity [pmol/l]	Observations
27	2,086	11.64	8.5	
28	2,363	12.84	8.2	
29	2,574	15.75	9.3	
30	2,799	12.25	6.6	
31	3,577	15.32	6.5	
32	4,032	18.85	7.1	
33	5,300	15.92	4.6	
34	5,852	17.89	4.6	
35	6,730	22.71	5.1	
36	7,764	10.19	2.0	
37	8,500	11.14	2.0	
38	10,380	75.00	10.9	Upper Marker

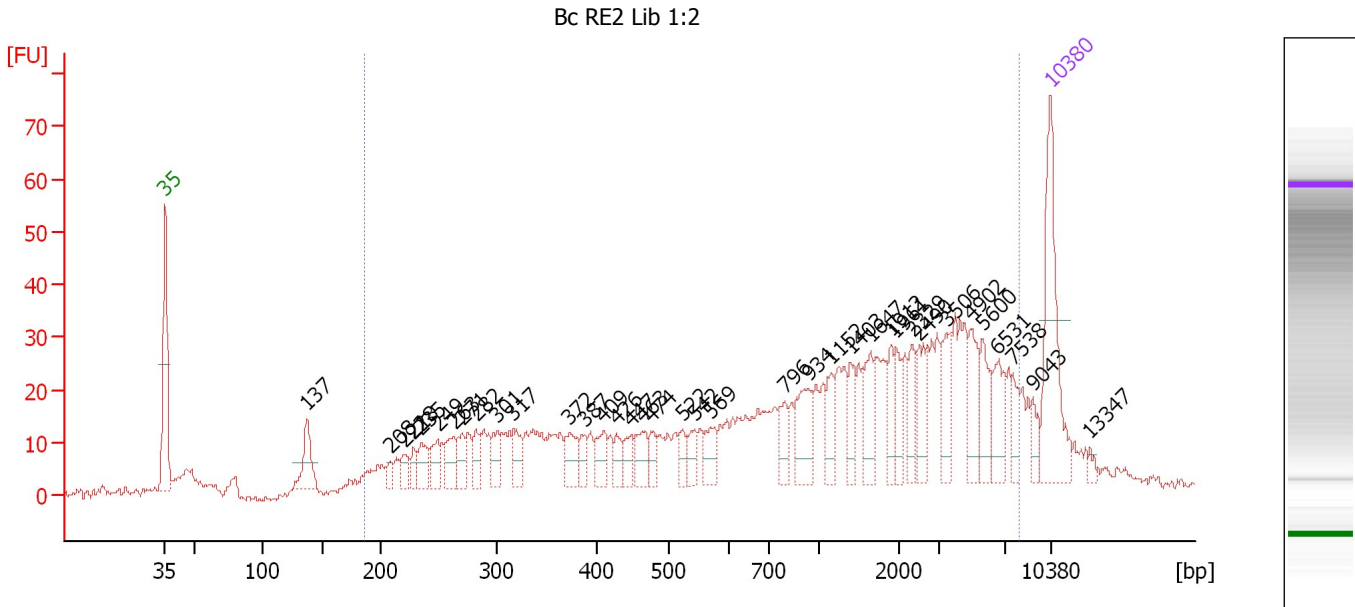
**Region table for sample 1 : Bc RE1 Lib 1:3**

From [bp]	To [bp]	Average Size [bp]	Molarity [pmol/l]	Conc. [pg/µl]	Corr. Area	% of Total	Size distribution in CV [%]	Color
181	8,420	1,269	7,908.0	2,080.35	1,753.7	94	100.0	

Assay Class: High Sensitivity DNA Assay  
 Data Path: C:\...ents and Settings\Bioanalyzer\2012-11-19\2012-11-19\_001.xad

Created: 11/19/2012 9:51:08 AM  
 Modified: 11/19/2012 10:30:31 AM

**Electropherogram Summary Continued ...**



**Overall Results for sample 2 : Bc RE2 Lib 1:2**

Number of peaks found: 37                      Corr. Area 1: 942.3  
 Noise: 0.8

**Peak table for sample 2 : Bc RE2 Lib 1:2**

Peak	Size [bp]	Conc. [pg/μl]	Molarity [pmol/l]	Observations
1	35	125.00	5,411.3	Lower Marker
2	137	41.46	458.8	
3	208	8.77	63.8	
4	221	15.20	104.5	
5	228	12.13	80.5	
6	235	21.82	140.8	
7	249	21.25	129.2	
8	263	22.74	131.0	
9	271	19.14	107.2	
10	282	16.80	90.3	
11	301	20.92	105.4	
12	317	21.04	100.7	
13	372	23.89	97.2	
14	387	13.08	51.2	
15	409	19.63	72.8	
16	426	12.75	45.3	
17	447	14.87	50.4	
18	463	20.08	65.8	
19	474	12.61	40.3	
20	522	11.96	34.7	
21	542	12.53	35.0	
22	569	18.82	50.2	
23	796	18.31	34.8	
24	934	35.52	57.6	
25	1,152	18.75	24.7	
26	1,403	18.34	19.8	

Assay Class: High Sensitivity DNA Assay  
 Data Path: C:\...ents and Settings\Bioanalyzer\2012-11-19\2012-11-19\_001.xad

Created: 11/19/2012 9:51:08 AM  
 Modified: 11/19/2012 10:30:31 AM

**Electropherogram Summary Continued ...**

**... Peak table for sample 2 : Bc RE2 Lib 1:2**

Peak	Size [bp]	Conc. [pg/μl]	Molarity [pmol/l]	Observations
27	1,647	27.14	25.0	
28	1,912	16.20	12.8	
29	1,961	17.16	13.3	
30	2,329	18.54	12.1	
31	2,490	25.01	15.2	
32	3,506	25.36	11.0	
33	4,902	27.67	8.6	
34	5,600	25.07	6.8	
35	6,531	25.55	5.9	
36	7,538	12.37	2.5	
37	9,043	10.31	1.7	
38	10,380	75.00	10.9	Upper Marker
39	13,347	0.00	0.0	

**Region table for sample 2 : Bc RE2 Lib 1:2**

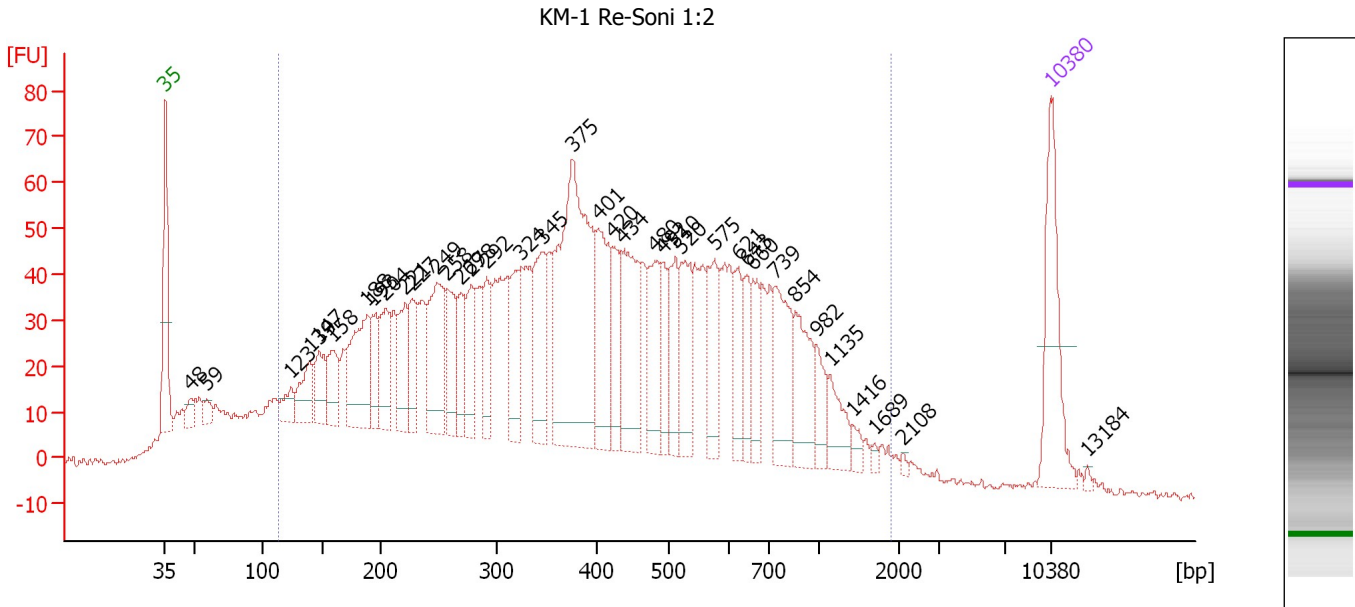
From [bp]	To [bp]	Average Size [bp]	Molarity [pmol/l]	Conc. [pg/μl]	Corr. Area	% of Total	Size distribution in CV [%]	Color
187	8,007	1,870	3,694.4	1,289.50	942.3	88	100.0	



Assay Class: High Sensitivity DNA Assay  
 Data Path: C:\...ents and Settings\Bioanalyzer\2012-11-19\2012-11-19\_001.xad

Created: 11/19/2012 9:51:08 AM  
 Modified: 11/19/2012 10:30:31 AM

**Electropherogram Summary Continued ...**



**Overall Results for sample 3 : KM-1 Re-Soni 1:2**

Number of peaks found: 38                      Corr. Area 1: 2,558.3  
 Noise: 0.8

**Peak table for sample 3 : KM-1 Re-Soni 1:2**

Peak	Size [bp]	Conc. [pg/μl]	Molarity [pmol/l]	Observations
1	35	125.00	5,411.3	Lower Marker
2	48	18.16	574.8	
3	59	13.66	351.1	
4	123	23.22	286.3	
5	139	45.57	495.6	
6	147	43.53	448.5	
7	158	46.18	442.2	
8	188	108.50	872.4	
9	193	41.39	325.2	
10	204	59.04	438.4	
11	221	56.03	384.5	
12	227	46.39	309.4	
13	249	102.94	626.8	
14	258	53.19	312.8	
15	269	39.15	220.5	
16	278	55.24	300.7	
17	292	44.18	229.6	
18	324	69.14	323.1	
19	345	78.96	346.7	
20	375	288.00	1,163.6	
21	401	92.26	349.0	
22	420	52.54	189.3	
23	434	100.50	350.9	
24	480	61.06	192.8	
25	492	35.72	110.0	
26	510	51.38	152.6	

Assay Class: High Sensitivity DNA Assay  
 Data Path: C:\...ents and Settings\Bioanalyzer\2012-11-19\2012-11-19\_001.xad

Created: 11/19/2012 9:51:08 AM  
 Modified: 11/19/2012 10:30:31 AM

### Electropherogram Summary Continued ...

#### ... Peak table for sample 3 : KM-1 Re-Soni 1:2

Peak	Size [bp]	Conc. [pg/μl]	Molarity [pmol/l]	Observations
27	520	61.90	180.5	
28	575	54.68	144.1	
29	621	37.47	91.4	
30	643	29.72	70.1	
31	660	38.15	87.6	
32	739	71.05	145.8	
33	854	58.47	103.8	
34	982	25.30	39.0	
35	1,135	28.58	38.1	
36	1,416	7.87	8.4	
37	1,689	3.54	3.2	
38	2,108	2.19	1.6	
39	10,380	75.00	10.9	Upper Marker
40	13,184	0.00	0.0	

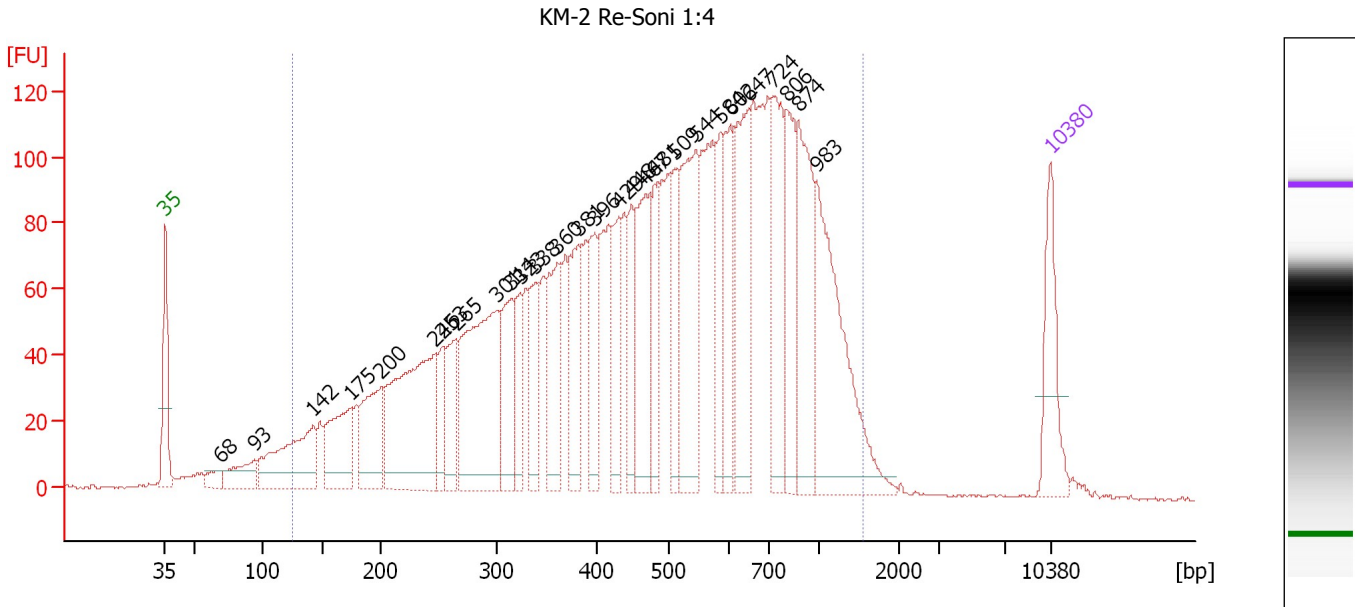
#### Region table for sample 3 : KM-1 Re-Soni 1:2

From [bp]	To [bp]	Average Size [bp]	Molarity [pmol/l]	Conc. [pg/μl]	Corr. Area	% of Total	Size distribution in CV [%]	Color
114	1,902	459	16,460.1	3,239.93	2,558.3	90	60.0	

Assay Class: High Sensitivity DNA Assay  
 Data Path: C:\...ents and Settings\Bioanalyzer\2012-11-19\2012-11-19\_001.xad

Created: 11/19/2012 9:51:08 AM  
 Modified: 11/19/2012 10:30:31 AM

**Electropherogram Summary Continued ...**



**Overall Results for sample 4 : KM-2 Re-Soni 1:4**

Number of peaks found: 28                      Corr. Area 1: 4,047.8  
 Noise: 0.4

**Peak table for sample 4 : KM-2 Re-Soni 1:4**

Peak	Size [bp]	Conc. [pg/μl]	Molarity [pmol/l]	Observations
1	35	125.00	5,411.3	Lower Marker
2	68	23.36	517.7	
3	93	61.07	991.4	
4	142	182.66	1,943.7	
5	175	131.53	1,140.3	
6	200	131.21	992.3	
7	246	322.15	1,984.2	
8	253	60.61	362.3	
9	265	82.33	470.1	
10	301	304.34	1,533.7	
11	314	102.23	492.8	
12	323	61.27	287.0	
13	338	81.76	366.2	
14	360	132.81	559.1	
15	381	111.97	445.3	
16	396	78.23	299.1	
17	429	85.64	302.3	
18	448	71.62	242.4	
19	467	145.79	473.1	
20	481	75.21	237.1	
21	509	77.27	229.9	
22	544	215.04	598.5	
23	584	76.30	197.9	
24	602	105.07	264.5	
25	647	169.58	396.9	
26	724	144.03	301.5	

Assay Class: High Sensitivity DNA Assay  
 Data Path: C:\...ents and Settings\Bioanalyzer\2012-11-19\2012-11-19\_001.xad

Created: 11/19/2012 9:51:08 AM  
 Modified: 11/19/2012 10:30:31 AM

### Electropherogram Summary Continued ...

#### ... Peak table for sample 4 : KM-2 Re-Soni 1:4

Peak	Size [bp]	Conc. [pg/μl]	Molarity [pmol/l]	Observations
27	806	115.01	216.3	
28	874	156.71	271.7	
29	983	241.70	372.4	
30	10,380	75.00	10.9	Upper Marker

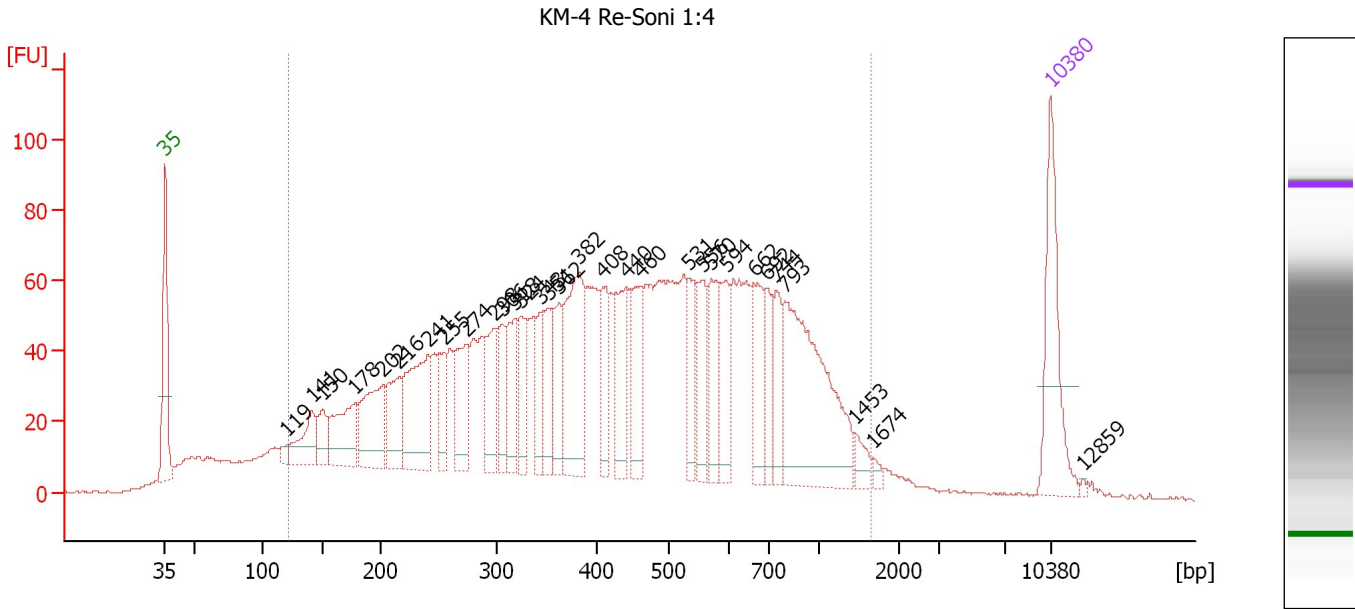
#### Region table for sample 4 : KM-2 Re-Soni 1:4

From [bp]	To [bp]	Average Size [bp]	Molarity [pmol/l]	Conc. [pg/μl]	Corr. Area	% of Total	Size distribution in CV [%]	Color
124	1,545	537	18,616.5	4,499.53	4,047.8	95	49.3	

Assay Class: High Sensitivity DNA Assay  
 Data Path: C:\...ents and Settings\Bioanalyzer\2012-11-19\2012-11-19\_001.xad

Created: 11/19/2012 9:51:08 AM  
 Modified: 11/19/2012 10:30:31 AM

**Electropherogram Summary Continued ...**



**Overall Results for sample 5 : KM-4 Re-Soni 1:4**

Number of peaks found: 31                      Corr. Area 1: 2,838.7  
 Noise: 0.4

**Peak table for sample 5 : KM-4 Re-Soni 1:4**

Peak	Size [bp]	Conc. [pg/μl]	Molarity [pmol/l]	Observations
1	35	125.00	5,411.3	Lower Marker
2	119	8.54	108.5	
3	141	50.63	543.8	
4	150	31.19	315.1	
5	178	77.27	657.7	
6	202	88.59	664.4	
7	216	60.61	425.9	
8	241	118.89	747.8	
9	255	37.89	225.5	
10	274	68.11	376.4	
11	298	58.43	296.7	
12	306	41.98	208.1	
13	318	56.96	271.5	
14	324	48.65	227.3	
15	343	41.61	183.6	
16	351	48.46	209.2	
17	362	48.27	202.1	
18	382	122.04	483.8	
19	408	48.81	181.5	
20	440	64.93	223.5	
21	460	65.67	216.5	
22	531	40.45	115.3	
23	556	52.56	143.4	
24	570	51.57	137.1	
25	594	47.12	120.2	
26	662	49.23	112.6	

Assay Class: High Sensitivity DNA Assay  
 Data Path: C:\...ents and Settings\Bioanalyzer\2012-11-19\2012-11-19\_001.xad


Created: 11/19/2012 9:51:08 AM  
 Modified: 11/19/2012 10:30:31 AM

### Electropherogram Summary Continued ...

#### ... Peak table for sample 5 : KM-4 Re-Soni 1:4

Peak	Size [bp]	Conc. [pg/μl]	Molarity [pmol/l]	Observations
27	692	35.47	77.7	
28	744	38.55	78.5	
29	793	190.26	363.7	
30	1,453	12.61	13.1	
31	1,674	4.66	4.2	
32	10,380	75.00	10.9	Upper Marker
33	12,859	0.00	0.0	

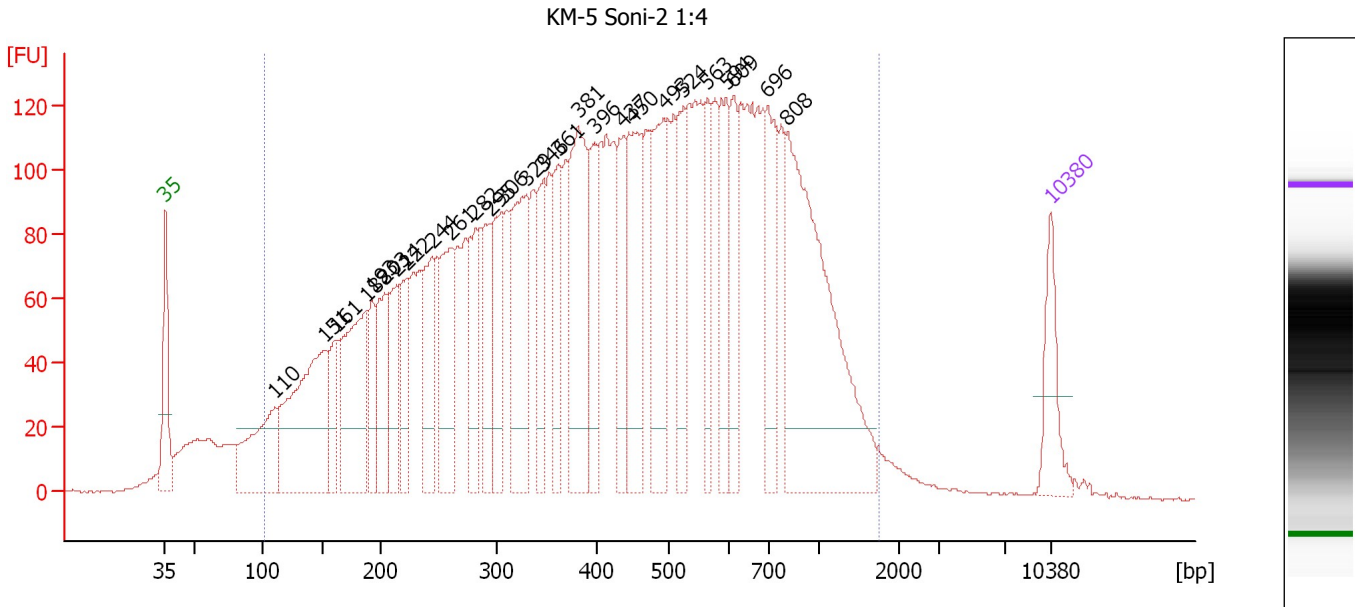
#### Region table for sample 5 : KM-4 Re-Soni 1:4

From [bp]	To [bp]	Average Size [bp]	Molarity [pmol/l]	Conc. [pg/μl]	Corr. Area	% of Total	Size distribution in CV [%]	Color
122	1,659	483	13,013.4	2,780.03	2,838.7	91	54.4	

Assay Class: High Sensitivity DNA Assay  
 Data Path: C:\...ents and Settings\Bioanalyzer\2012-11-19\2012-11-19\_001.xad

Created: 11/19/2012 9:51:08 AM  
 Modified: 11/19/2012 10:30:31 AM

**Electropherogram Summary Continued ...**



**Setpoint Deviations for sample 6 : KM-5 Soni-2 1:4**

Height Threshold [FU] : 20

**Overall Results for sample 6 : KM-5 Soni-2 1:4**

Number of peaks found: 27                      Corr. Area 1: 5,567.9  
 Noise: 0.2

**Peak table for sample 6 : KM-5 Soni-2 1:4**

Peak	Size [bp]	Conc. [pg/μl]	Molarity [pmol/l]	Observations
1	35	125.00	5,411.3	Lower Marker
2	110	232.51	3,212.6	
3	151	440.88	4,410.9	
4	161	91.96	862.9	
5	188	317.60	2,565.5	
6	193	104.52	822.3	
7	203	157.41	1,174.0	
8	214	129.78	919.7	
9	222	123.95	844.5	
10	244	165.83	1,029.0	
11	261	199.06	1,156.0	
12	282	145.85	784.6	
13	295	129.98	666.8	
14	306	155.16	769.1	
15	329	260.50	1,197.9	
16	346	132.21	578.4	
17	361	134.34	563.1	
18	381	303.96	1,208.1	
19	396	124.74	476.9	
20	437	130.67	453.6	
21	450	212.93	716.3	
22	493	219.03	673.2	

Assay Class: High Sensitivity DNA Assay  
 Data Path: C:\...ents and Settings\Bioanalyzer\2012-11-19\2012-11-19\_001.xad

Created: 11/19/2012 9:51:08 AM  
 Modified: 11/19/2012 10:30:31 AM

### Electropherogram Summary Continued ...

#### ... Peak table for sample 6 : KM-5 Soni-2 1:4

Peak	Size [bp]	Conc. [pg/μl]	Molarity [pmol/l]	Observations
23	524	137.43	397.7	
24	563	101.31	272.5	
25	594	133.59	340.6	
26	609	110.84	275.7	
27	696	157.48	343.0	
28	808	548.62	1,028.3	
29	▶ 10,380	75.00	10.9	Upper Marker

#### Region table for sample 6 : KM-5 Soni-2 1:4

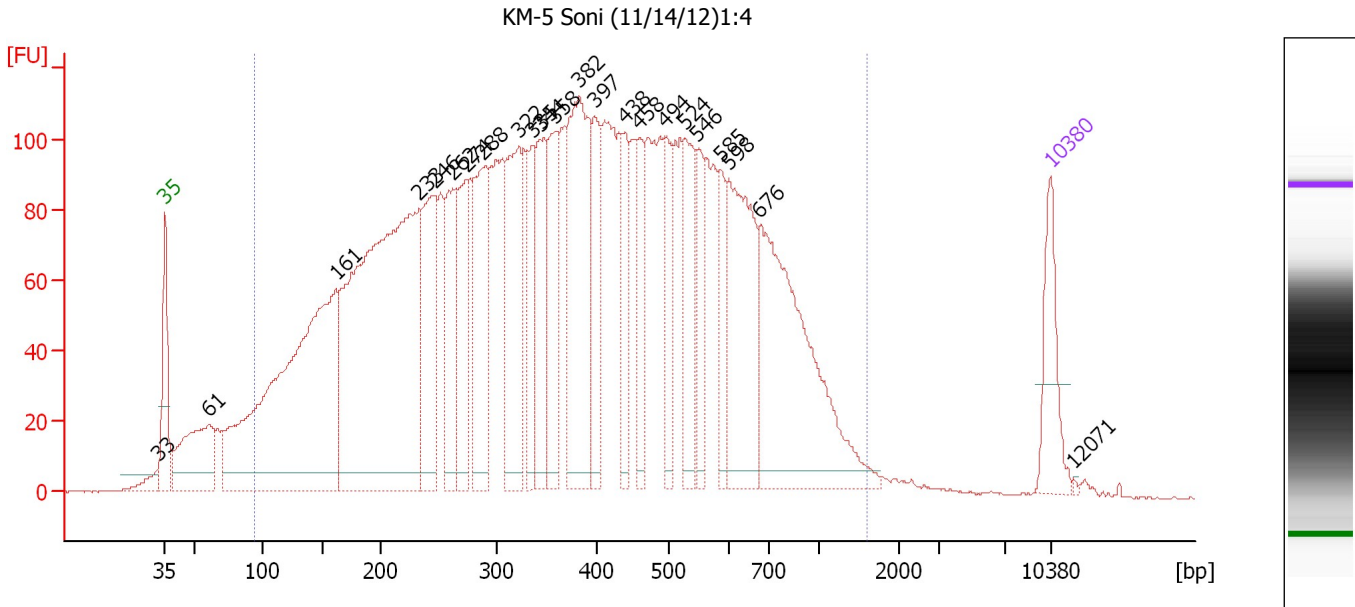
From [bp]	To [bp]	Average Size [bp]	Molarity [pmol/l]	Conc. [pg/μl]	Corr. Area	% of Total	Size distribution in CV [%]	Color
101	1,757	483	35,769.7	7,279.47	5,567.9	94	55.7	■



Assay Class: High Sensitivity DNA Assay  
 Data Path: C:\...ents and Settings\Bioanalyzer\2012-11-19\2012-11-19\_001.xad

Created: 11/19/2012 9:51:08 AM  
 Modified: 11/19/2012 10:30:31 AM

**Electropherogram Summary Continued ...**



**Overall Results for sample 7 : KM-5 Soni (11/14/12)1:4**

Number of peaks found: 23                      Corr. Area 1: 5,235.8  
 Noise: 0.3

**Peak table for sample 7 : KM-5 Soni (11/14/12)1:4**

Peak	Size [bp]	Conc. [pg/μl]	Molarity [pmol/l]	Observations
1	33	0.00	0.0	
2	35	125.00	5,411.3	Lower Marker
3	61	200.99	5,012.4	
4	161	891.97	8,380.3	
5	233	1,013.38	6,576.4	
6	246	223.01	1,372.7	
7	262	155.13	895.7	
8	274	170.32	941.6	
9	288	204.19	1,075.1	
10	322	238.06	1,120.0	
11	335	101.74	459.5	
12	344	156.19	687.6	
13	358	146.40	619.3	
14	382	333.22	1,321.6	
15	397	117.15	447.6	
16	438	88.06	304.8	
17	458	85.53	282.8	
18	494	89.62	275.1	
19	524	127.30	367.8	
20	546	80.10	222.4	
21	585	65.62	170.1	
22	598	245.65	622.3	
23	676	412.82	924.9	
24	10,380	75.00	10.9	Upper Marker
25	12,071	0.00	0.0	

Assay Class: High Sensitivity DNA Assay  
Data Path: C:\...ents and Settings\Bioanalyzer\2012-11-19\2012-11-19\_001.xad

Created: 11/19/2012 9:51:08 AM  
Modified: 11/19/2012 10:30:31 AM

**Electropherogram Summary Continued ...**

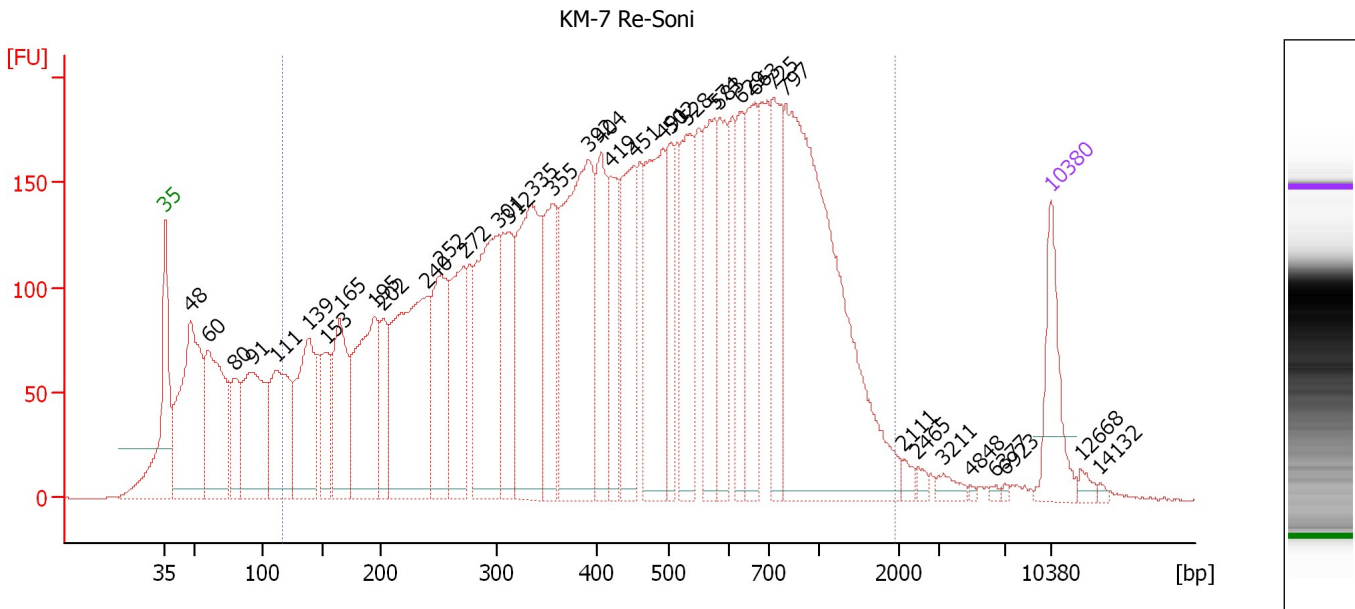
... Region table for sample 7 : KM-5 Soni (11/14/12)1:4

From [bp]	To [bp]	Average Size [bp]	Molarity [pmol/l]	Conc. [pg/μl]	Corr. Area	% of Total	Size distribution in CV [%]	Color
94	1,601	412	35,656.1	6,434.95	5,235.8	94	52.7	■

Assay Class: High Sensitivity DNA Assay  
 Data Path: C:\...ents and Settings\Bioanalyzer\2012-11-19\2012-11-19\_001.xad

Created: 11/19/2012 9:51:08 AM  
 Modified: 11/19/2012 10:30:31 AM

**Electropherogram Summary Continued ...**



**Overall Results for sample 8 : KM-7 Re-Soni**

Number of peaks found: 38                      Corr. Area 1: 8,127.4  
 Noise: 0.2

**Peak table for sample 8 : KM-7 Re-Soni**

Peak	Size [bp]	Conc. [pg/μl]	Molarity [pmol/l]	Observations
1	35	125.00	5,411.3	Lower Marker
2	48	369.06	11,643.6	
3	60	277.02	7,007.3	
4	80	100.58	1,914.9	
5	91	245.12	4,064.0	
6	111	210.15	2,870.8	
7	139	214.69	2,347.4	
8	153	100.64	997.1	
9	165	176.94	1,626.5	
10	195	266.41	2,072.0	
11	202	87.01	652.4	
12	240	382.26	2,417.1	
13	252	193.02	1,162.3	
14	272	178.43	994.1	
15	301	279.92	1,407.5	
16	312	150.72	731.7	
17	335	302.70	1,369.6	
18	355	168.24	717.6	
19	392	389.52	1,506.7	
20	404	147.42	552.4	
21	419	95.92	347.1	
22	451	171.48	576.5	
23	491	237.67	733.3	
24	502	85.81	258.8	
25	528	161.69	463.7	
26	574	156.97	414.2	

Assay Class: High Sensitivity DNA Assay  
 Data Path: C:\...ents and Settings\Bioanalyzer\2012-11-19\2012-11-19\_001.xad

Created: 11/19/2012 9:51:08 AM  
 Modified: 11/19/2012 10:30:31 AM

**Electropherogram Summary Continued ...**

**... Peak table for sample 8 : KM-7 Re-Soni**

Peak	Size [bp]	Conc. [pg/µl]	Molarity [pmol/l]	Observations
27	583	118.39	307.6	
28	629	87.01	209.4	
29	663	139.72	319.2	
30	725	133.49	278.8	
31	797	646.72	1,229.0	
32	2,111	9.33	6.7	
33	2,465	7.17	4.4	
34	3,211	12.82	6.1	
35	4,848	2.14	0.7	
36	6,377	2.87	0.7	
37	6,923	2.43	0.5	
38	10,380	75.00	10.9	Upper Marker
39	12,668	0.00	0.0	
40	14,132	0.00	0.0	

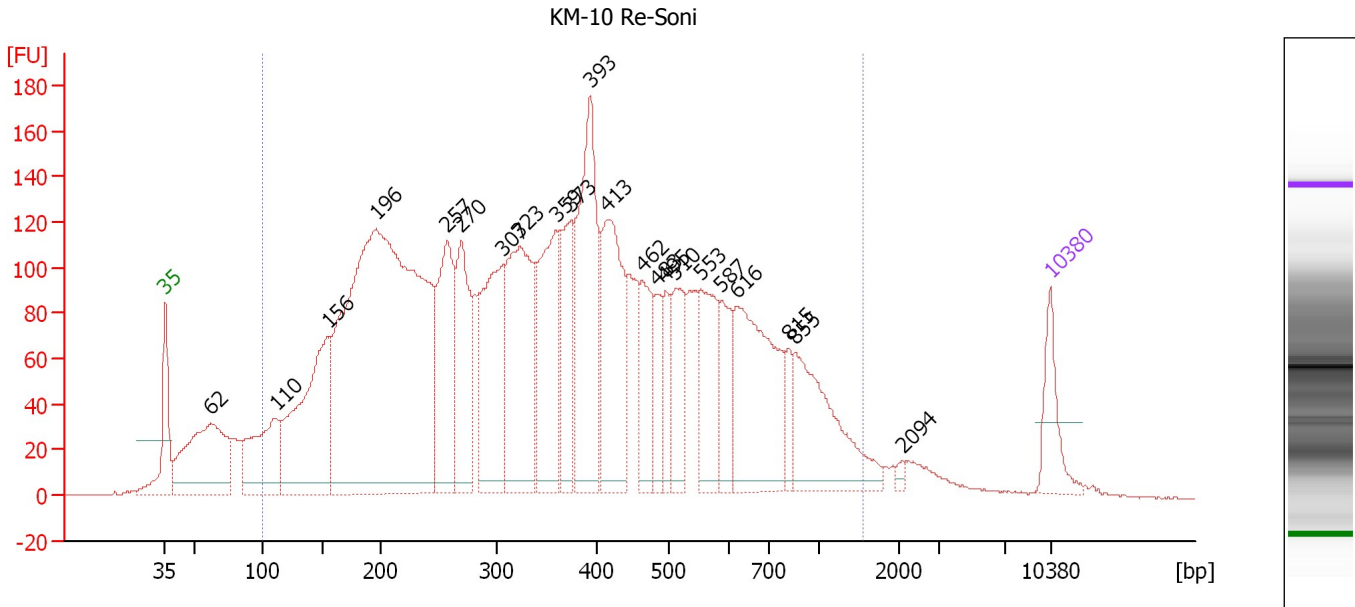
**Region table for sample 8 : KM-7 Re-Soni**

From [bp]	To [bp]	Average Size [bp]	Molarity [pmol/l]	Conc. [pg/µl]	Corr. Area	% of Total	Size distribution in CV [%]	Color
115	1,967	520	27,203.8	5,738.92	8,127.4	86	60.2	<span style="color: blue;">■</span>

Assay Class: High Sensitivity DNA Assay  
 Data Path: C:\...ents and Settings\Bioanalyzer\2012-11-19\2012-11-19\_001.xad

Created: 11/19/2012 9:51:08 AM  
 Modified: 11/19/2012 10:30:31 AM

**Electropherogram Summary Continued ...**



**Overall Results for sample 9 : KM-10 Re-Soni**

Number of peaks found: 22                      Corr. Area 1: 5,787.1  
 Noise: 0.2

**Peak table for sample 9 : KM-10 Re-Soni**


Peak	Size [bp]	Conc. [pg/μl]	Molarity [pmol/l]	Observations
1	35	125.00	5,411.3	Lower Marker
2	62	423.11	10,299.4	
3	110	266.09	3,654.0	
4	156	531.33	5,171.2	
5	196	1,957.63	15,118.7	
6	257	335.12	1,972.1	
7	270	277.97	1,562.6	
8	307	367.29	1,815.5	
9	323	443.94	2,084.0	
10	359	304.41	1,285.3	
11	373	177.66	721.1	
12	393	425.00	1,640.5	
13	413	344.56	1,263.5	
14	462	140.88	461.7	
15	483	81.39	255.5	
16	495	75.14	229.9	
17	510	138.14	410.0	
18	553	184.97	507.2	
19	587	104.11	268.9	
20	616	341.43	839.2	
21	815	43.01	80.0	
22	855	260.15	461.2	
23	2,094	7.40	5.4	
24	10,380	75.00	10.9	Upper Marker

Assay Class: High Sensitivity DNA Assay  
Data Path: C:\...ents and Settings\Bioanalyzer\2012-11-19\2012-11-19\_001.xad

Created: 11/19/2012 9:51:08 AM  
Modified: 11/19/2012 10:30:31 AM

**Electropherogram Summary Continued ...**

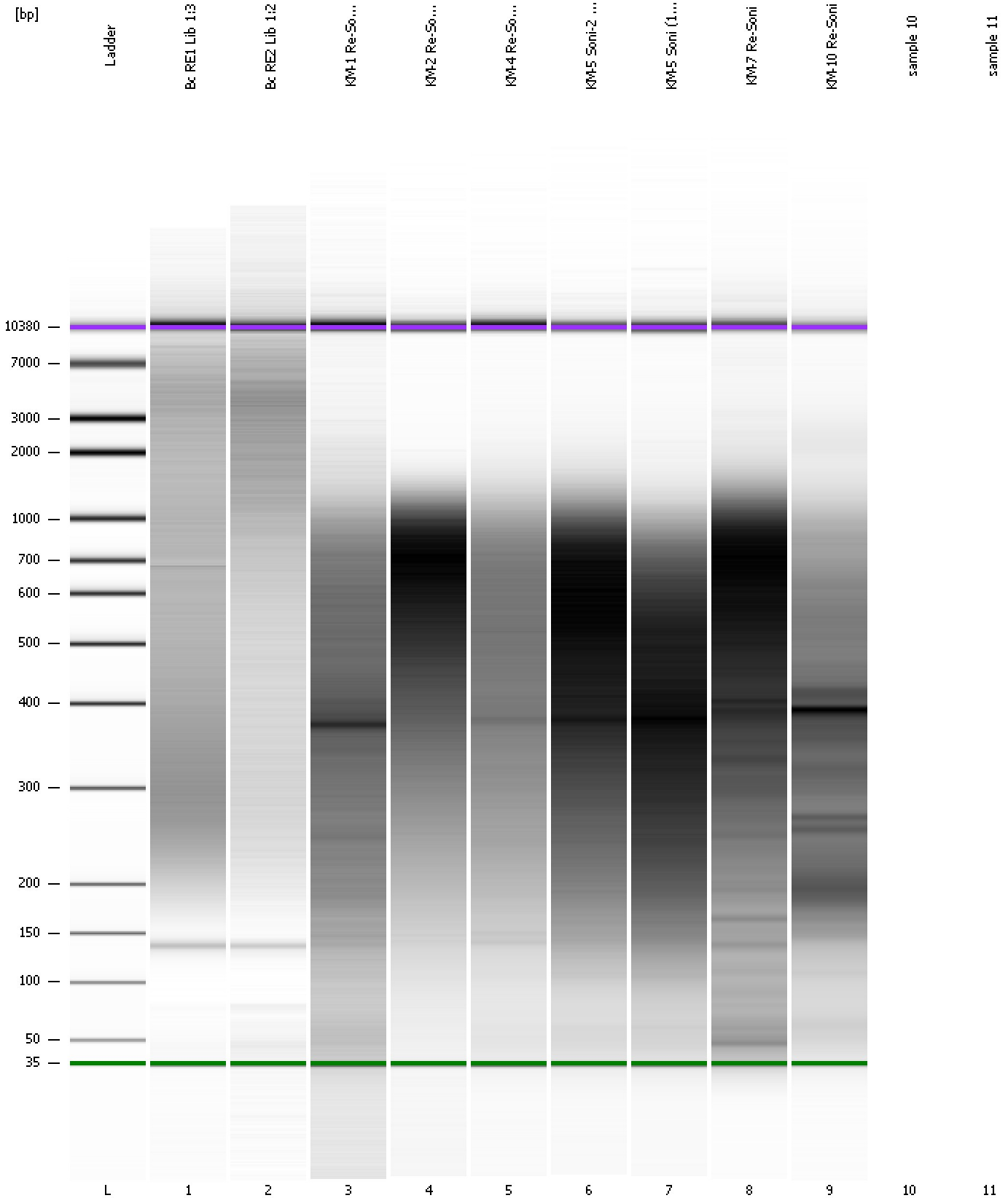
... Region table for sample 9 : KM-10 Re-Soni

From [bp]	To [bp]	Average Size [bp]	Molarity [pmol/l]	Conc. [pg/μl]	Corr. Area	% of Total	Size distribution in CV [%]	Color
99	1,549	405	40,763.8	7,251.30	5,787.1	91	56.9	

Assay Class: High Sensitivity DNA Assay  
Data Path: C:\...ents and Settings\Bioanalyzer\2012-11-19\2012-11-19\_001.xad

Created: 11/19/2012 9:51:08 AM  
Modified: 11/19/2012 10:30:31 AM

**Gel Image**



Assay Class: High Sensitivity DNA Assay  
Data Path: C:\...ents and Settings\Bioanalyzer\2012-11-19\2012-11-19\_001.xad

Created: 11/19/2012 9:51:08 AM  
Modified: 11/19/2012 10:30:31 AM

**Invalid Samples**

Sample 10 has not been run, no results available.

Sample 11 has not been run, no results available.



Assay Class: High Sensitivity DNA Assay  
 Data Path: C:\...ents and Settings\Bioanalyzer\2012-11-19\2012-11-19\_001.xad

Created: 11/19/2012 9:51:08 AM  
 Modified: 11/19/2012 10:30:31 AM

**Run Logbook**

Description	Number	Source	Category	Sub Category	Time	Time Zone	User	Host
Run ended on port 1 (Number of wells acquired: 10)		Instrument	Run		11/19/2012 10:26:44 AM	(GMT --08:00) Pacific Standard Time	UC Davis	D8XSMGH1
Run started on port 1 (File: C:\Documents and Settings\Bioanalyzer\2012-11-19\2012-11-19_001.xad)		Instrument	Run		11/19/2012 9:51:13 AM	(GMT --08:00) Pacific Standard Time	UC Davis	D8XSMGH1
Product Number : G2938B		Instrument	Run		11/19/2012 9:51:13 AM	(GMT --08:00) Pacific Standard Time	UC Davis	D8XSMGH1
Name :		Instrument	Run		11/19/2012 9:51:13 AM	(GMT --08:00) Pacific Standard Time	UC Davis	D8XSMGH1
Vendor : Agilent Technologies		Instrument	Run		11/19/2012 9:51:13 AM	(GMT --08:00) Pacific Standard Time	UC Davis	D8XSMGH1
Serial# : DE13701086		Instrument	Run		11/19/2012 9:51:13 AM	(GMT --08:00) Pacific Standard Time	UC Davis	D8XSMGH1
Firmware : C.01.069		Instrument	Run		11/19/2012 9:51:13 AM	(GMT --08:00) Pacific Standard Time	UC Davis	D8XSMGH1
Cartridge : Electrode		Instrument	Run		11/19/2012 9:51:13 AM	(GMT --08:00) Pacific Standard Time	UC Davis	D8XSMGH1