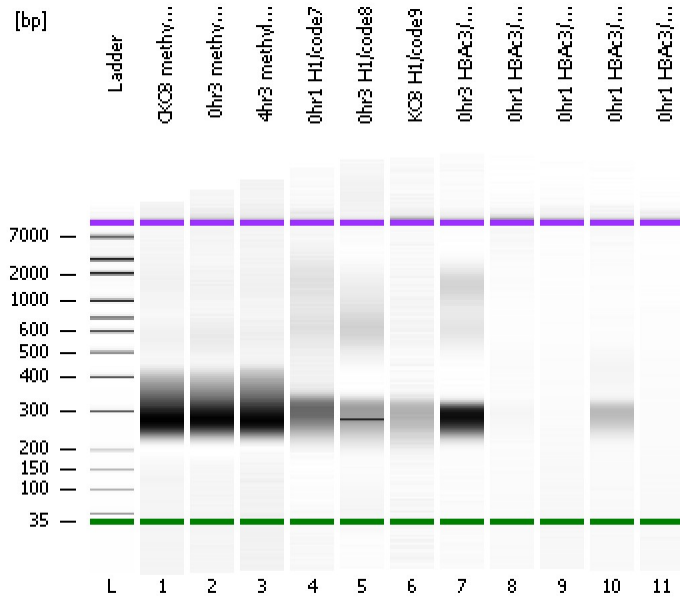


Assay Class: High Sensitivity DNA Assay  
Data Path: C:\...ents and Settings\Bioanalyzer\2012-11-19\2012-11-19\_003.xad

Created: 11/19/2012 11:58:06 AM  
Modified: 11/19/2012 12:37:30 PM

Electrophoresis File Run Summary



Instrument Information:

Instrument Name: DE13701086      Firmware: C.01.069  
Serial#: DE13701086      Type: G2938B

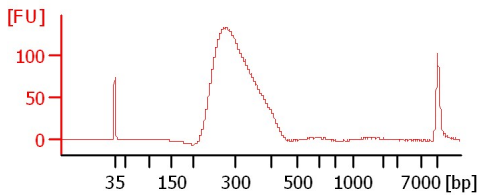
Assay Information:

Assay Origin Path: C:\Program Files\Agilent\2100 bioanalyzer\2100 expert\assays\dsDNA\High Sensitivity DNA.xsy  
Assay Class: High Sensitivity DNA Assay  
Version: 1.03  
Assay Comments: Copyright © 2003-2010 Agilent Technologies

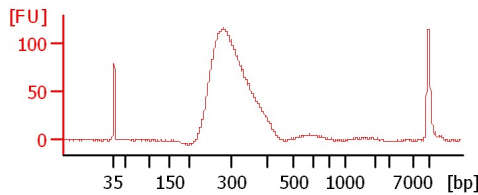
Chip Information:

Chip Lot #:   
Reagent Kit Lot #:   
Chip Comments:

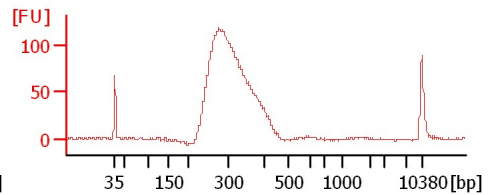
CKO3 methyl/code4



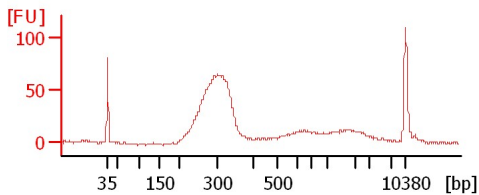
0hr3 methyl/code5



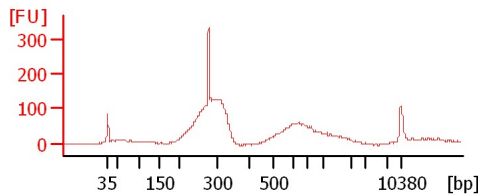
4hr3 methyl/code6



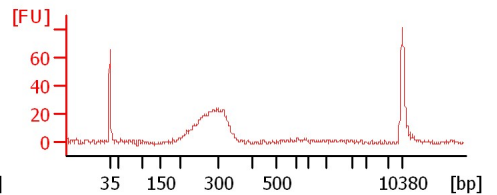
0hr1 H1/code7



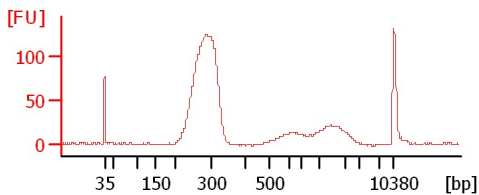
0hr3 H1/code8



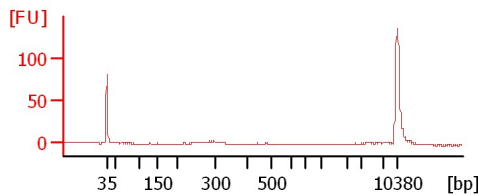
KO3 H1/code9



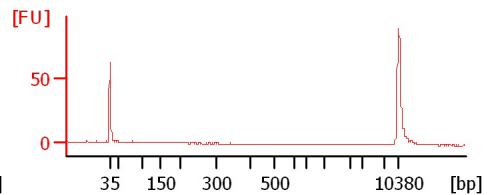
0hr3 H3Ac3/code12



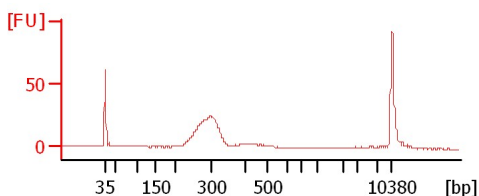
0hr1 H3Ac3/code11-1



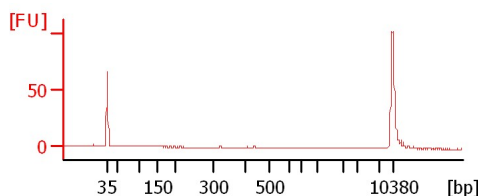
0hr1 H3Ac3/code11-2



0hr1 H3Ac3/code11-3



0hr1 H3Ac3/code11-4



Assay Class: High Sensitivity DNA Assay  
 Data Path: C:\...ents and Settings\Bioanalyzer\2012-11-19\2012-11-19\_003.xad

Created: 11/19/2012 11:58:06 AM  
 Modified: 11/19/2012 12:37:30 PM

**Electrophoresis File Run Summary (Chip Summary)**

Sample Name	Sample Comment	Rest. Digest	Status	Observation	Result Label	Result Color
CKO3 methyl/code4		<input type="checkbox"/>	✓			
0hr3 methyl/code5		<input type="checkbox"/>	✓			
4hr3 methyl/code6		<input type="checkbox"/>	✓			
0hr1 H1/code7		<input type="checkbox"/>	✓			
0hr3 H1/code8		<input type="checkbox"/>	✓			
KO3 H1/code9		<input type="checkbox"/>	✓			
0hr3 H3Ac3/code12		<input type="checkbox"/>	✓			
0hr1 H3Ac3/code11-1		<input type="checkbox"/>	✓			
0hr1 H3Ac3/code11-2		<input type="checkbox"/>	✓			
0hr1 H3Ac3/code11-3		<input type="checkbox"/>	✓			
0hr1 H3Ac3/code11-4		<input type="checkbox"/>	✓			
Ladder		<input type="checkbox"/>	✓			

**Chip Lot #**

**Reagent Kit Lot #**

**Chip Comments :**

Assay Class: High Sensitivity DNA Assay  
Data Path: C:\...ents and Settings\Bioanalyzer\2012-11-19\2012-11-19\_003.xad

Created: 11/19/2012 11:58:06 AM  
Modified: 11/19/2012 12:37:30 PM

**Electrophoresis Assay Details**

**General Analysis Settings**

Number of Available Sample and Ladder Wells (Max.) : 12  
Minimum Visible Range [s] : 32  
Maximum Visible Range [s] : 138  
Start Analysis Time Range [s] : 33  
End Analysis Time Range [s] : 137.5  
Ladder Concentration [pg/ $\mu$ l] : 1950  
Uses Standard Area for Ladder Fragments  
Lower Marker Concentration [pg/ $\mu$ l] : 125  
Upper Marker Concentration [pg/ $\mu$ l] : 75  
Used Upper Marker for Quantitation  
Standard Curve Fit is Point to Point  
Show Data Aligned to Lower and Upper Marker

**Integrator Settings**

Integration Start Time [s] : 33.05  
Integration End Time [s] : 137  
Slope Threshold : 0.8  
Height Threshold [FU] : 5  
Area Threshold : 0.1  
Width Threshold [s] : 0.6  
Baseline Plateau [s] : 0.5

**Filter Settings**

Filter Width [s] : 0.5  
Polynomial Order : 4

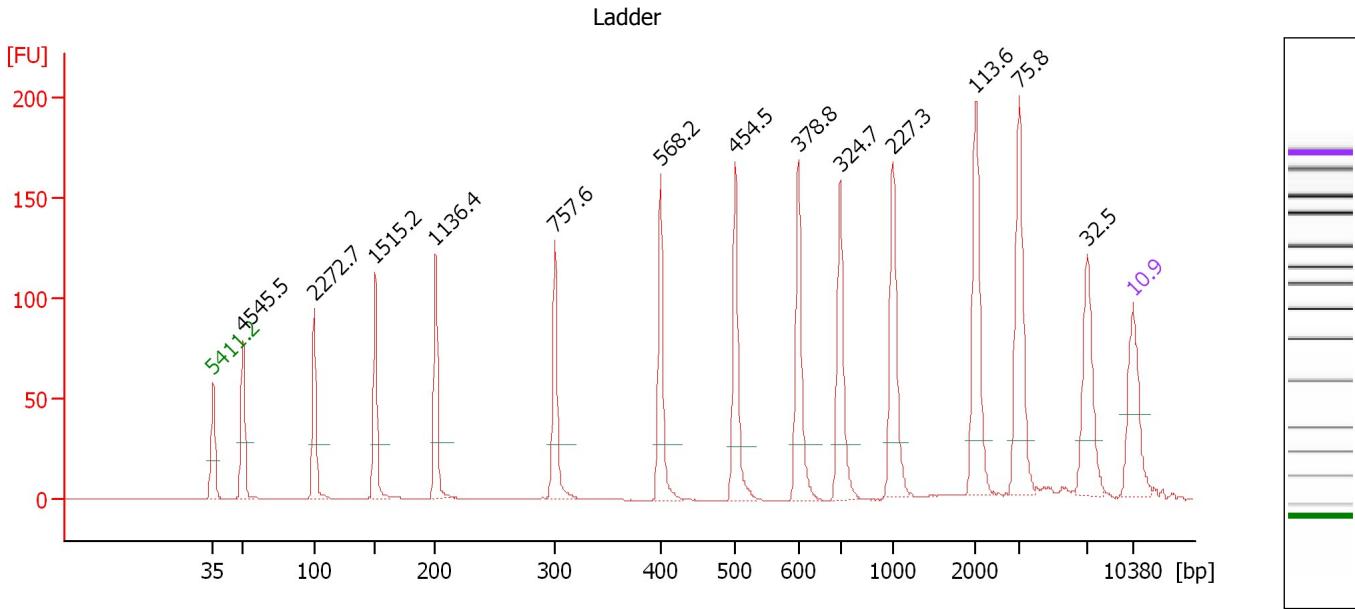
**Ladder**

Ladder Peak	Size	Area
1	35	160
2	50	210
3	100	208
4	150	221
5	200	242
6	300	270
7	400	305
8	500	306
9	600	336
10	700	321
11	1000	366
12	2000	413
13	3000	411
14	7000	400
15	10380	214

Assay Class: High Sensitivity DNA Assay  
 Data Path: C:\...ents and Settings\Bioanalyzer\2012-11-19\2012-11-19\_003.xad

Created: 11/19/2012 11:58:06 AM  
 Modified: 11/19/2012 12:37:30 PM

**Electropherogram Summary**



**Overall Results for Ladder**

Noise: 0.2

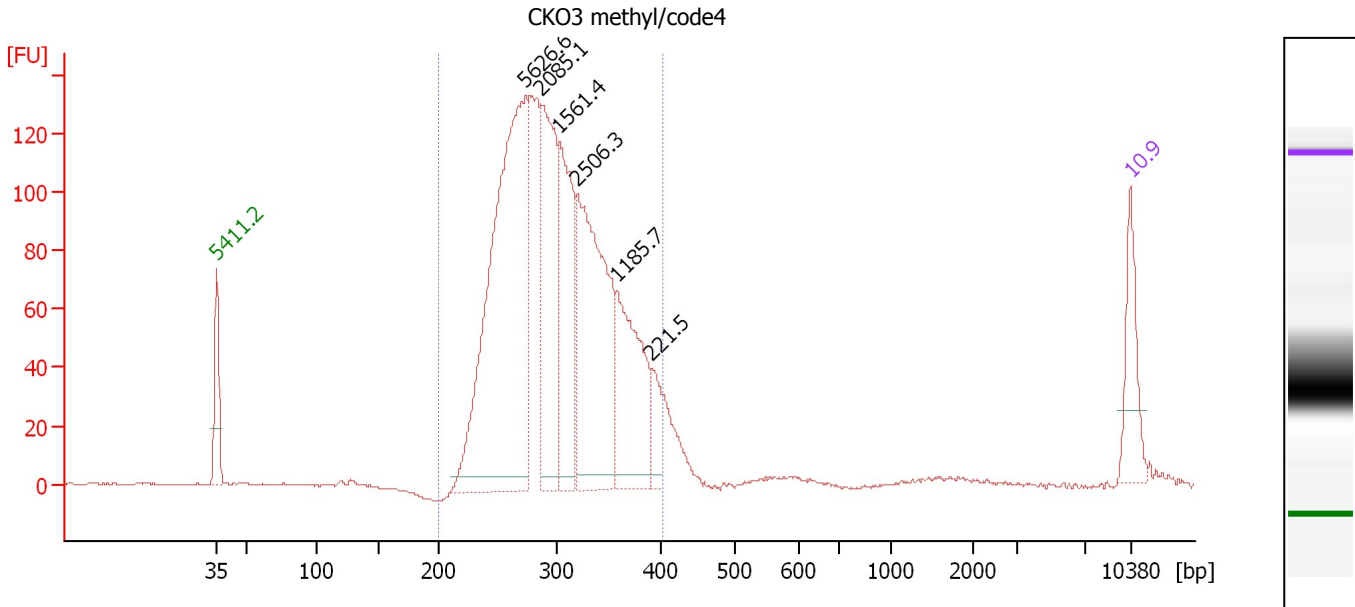
**Peak table for Ladder**

Peak	Size [bp]	Conc. [pg/μl]	Molarity [pmol/l]	Observations
1	35	125.00	5,411.3	Lower Marker
2	50	150.00	4,545.5	Ladder Peak
3	100	150.00	2,272.7	Ladder Peak
4	150	150.00	1,515.2	Ladder Peak
5	200	150.00	1,136.4	Ladder Peak
6	300	150.00	757.6	Ladder Peak
7	400	150.00	568.2	Ladder Peak
8	500	150.00	454.5	Ladder Peak
9	600	150.00	378.8	Ladder Peak
10	700	150.00	324.7	Ladder Peak
11	1,000	150.00	227.3	Ladder Peak
12	2,000	150.00	113.6	Ladder Peak
13	3,000	150.00	75.8	Ladder Peak
14	7,000	150.00	32.5	Ladder Peak
15	10,380	75.00	10.9	Upper Marker

Assay Class: High Sensitivity DNA Assay  
 Data Path: C:\...ents and Settings\Bioanalyzer\2012-11-19\2012-11-19\_003.xad

Created: 11/19/2012 11:58:06 AM  
 Modified: 11/19/2012 12:37:30 PM

**Electropherogram Summary Continued ...**



**Overall Results for sample 1 : CKO3 methyl/code4**

Number of peaks found: 6                      Corr. Area 1: 2,005.4  
 Noise: 0.2

**Peak table for sample 1 : CKO3 methyl/code4**

Peak	Size [bp]	Conc. [pg/μl]	Molarity [pmol/l]	Observations
1	35	125.00	5,411.3	Lower Marker
2	274	1,018.01	5,626.6	
3	287	395.19	2,085.1	
4	303	312.01	1,561.4	
5	320	528.60	2,506.3	
6	358	279.92	1,185.7	
7	391	57.11	221.5	
8	10,380	75.00	10.9	Upper Marker

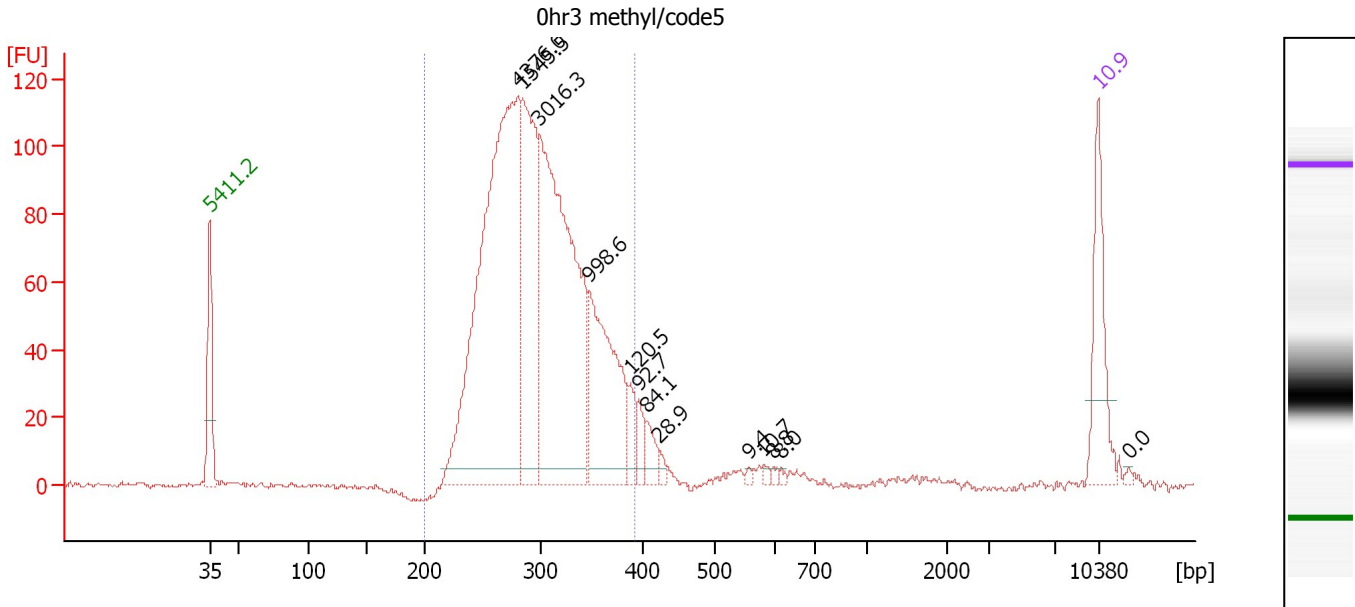
**Region table for sample 1 : CKO3 methyl/code4**

From [bp]	To [bp]	Average Size [bp]	Molarity [pmol/l]	Conc. [pg/μl]	Corr. Area	% of Total	Size distribution in CV [%]	Color
200	402	302	14,368.2	2,795.29	2,005.4	96	14.2	Blue

Assay Class: High Sensitivity DNA Assay  
 Data Path: C:\...ents and Settings\Bioanalyzer\2012-11-19\2012-11-19\_003.xad

Created: 11/19/2012 11:58:06 AM  
 Modified: 11/19/2012 12:37:30 PM

**Electropherogram Summary Continued ...**



**Overall Results for sample 2 : 0hr3 methyl/code5**

Number of peaks found: 13                      Corr. Area 1: 1,588.7  
 Noise: 0.7

**Peak table for sample 2 : 0hr3 methyl/code5**

Peak	Size [bp]	Conc. [pg/μl]	Molarity [pmol/l]	Observations
1	35	125.00	5,411.3	Lower Marker
2	281	811.61	4,376.0	
3	285	290.88	1,545.5	
4	300	596.23	3,016.3	
5	348	229.39	998.6	
6	389	30.93	120.5	
7	397	24.28	92.7	
8	406	22.53	84.1	
9	424	8.09	28.9	
10	557	3.47	9.4	
11	580	4.11	10.7	
12	596	3.45	8.8	
13	613	3.25	8.0	
14	10,380	75.00	10.9	Upper Marker
15	12,727	0.00	0.0	

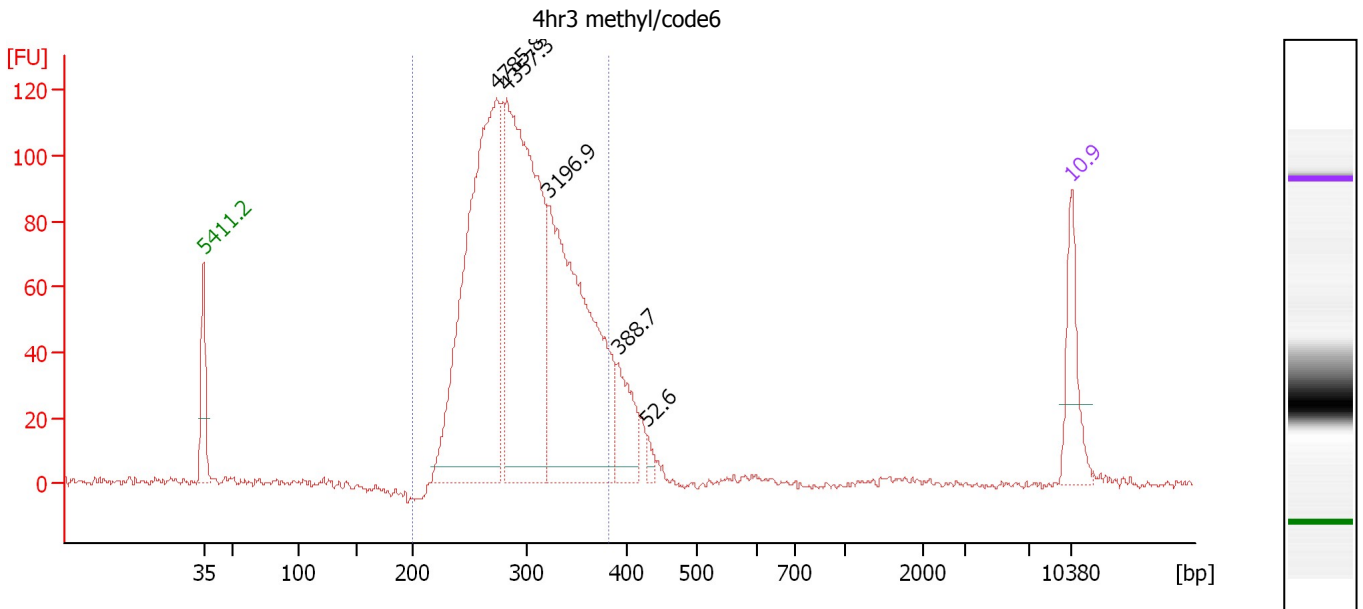
**Region table for sample 2 : 0hr3 methyl/code5**

From [bp]	To [bp]	Average Size [bp]	Molarity [pmol/l]	Conc. [pg/μl]	Corr. Area	% of Total	Size distribution in CV [%]	Color
200	393	299	10,131.8	1,960.91	1,588.7	93	13.3	Blue

Assay Class: High Sensitivity DNA Assay  
 Data Path: C:\...ents and Settings\Bioanalyzer\2012-11-19\2012-11-19\_003.xad

Created: 11/19/2012 11:58:06 AM  
 Modified: 11/19/2012 12:37:30 PM

**Electropherogram Summary Continued ...**



**Overall Results for sample 3 : 4hr3 methyl/code6**

Number of peaks found: 5                      Corr. Area 1: 1,638.3  
 Noise: 1.2

**Peak table for sample 3 : 4hr3 methyl/code6**

Peak	Size [bp]	Conc. [pg/μl]	Molarity [pmol/l]	Observations
1	35	125.00	5,411.3	Lower Marker
2	274	864.98	4,785.8	
3	282	812.00	4,357.3	
4	322	680.02	3,196.9	
5	392	100.67	388.7	
6	429	14.91	52.6	
7	10,380	75.00	10.9	Upper Marker

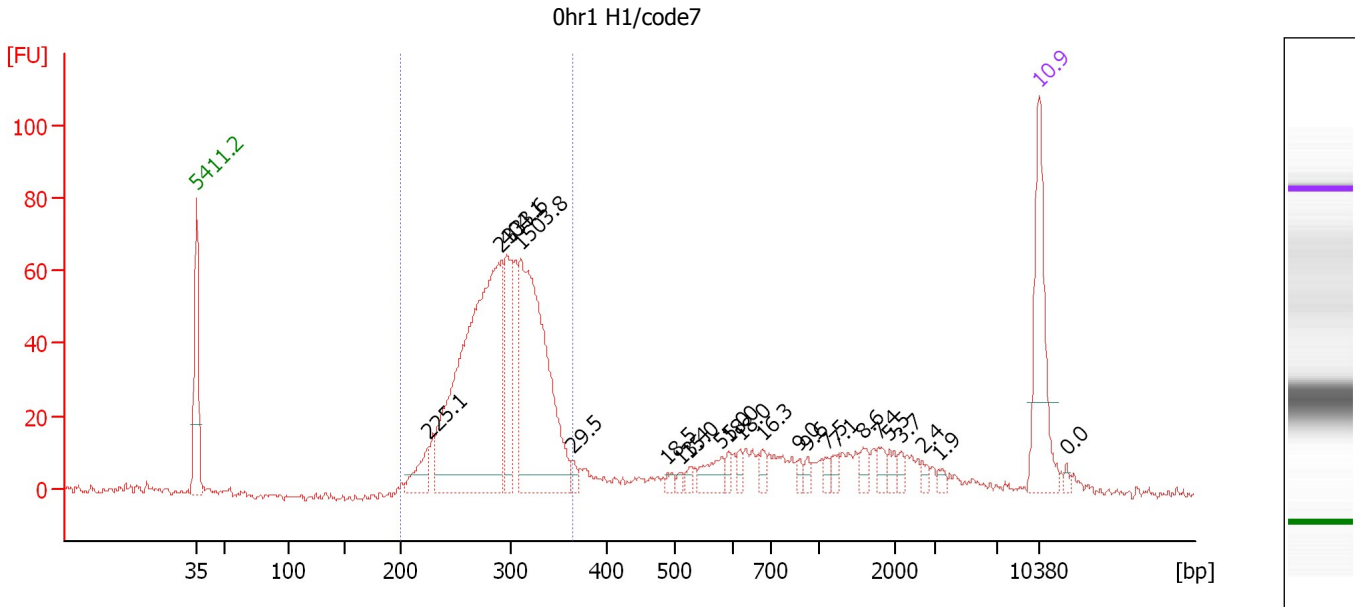
**Region table for sample 3 : 4hr3 methyl/code6**

From [bp]	To [bp]	Average Size [bp]	Molarity [pmol/l]	Conc. [pg/μl]	Corr. Area	% of Total	Size distribution in CV [%]	Color
200	383	298	12,267.0	2,361.70	1,638.3	91	13.1	Blue

Assay Class: High Sensitivity DNA Assay  
 Data Path: C:\...ents and Settings\Bioanalyzer\2012-11-19\2012-11-19\_003.xad

Created: 11/19/2012 11:58:06 AM  
 Modified: 11/19/2012 12:37:30 PM

**Electropherogram Summary Continued ...**



**Overall Results for sample 4 : Ohr1 H1/code7**

Number of peaks found: 23                      Corr. Area 1: 805.6  
 Noise: 1.0

**Peak table for sample 4 : Ohr1 H1/code7**

Peak	Size [bp]	Conc. [pg/μl]	Molarity [pmol/l]	Observations
1	35	125.00	5,411.3	Lower Marker
2	225	33.46	225.1	
3	292	450.42	2,333.6	
4	297	79.16	404.1	
5	311	308.41	1,503.8	
6	364	7.10	29.5	
7	489	5.96	18.5	
8	509	4.50	13.4	
9	525	5.20	15.0	
10	580	21.06	55.0	
11	591	7.04	18.0	
12	618	7.33	18.0	
13	678	7.29	16.3	
14	874	5.20	9.0	
15	924	5.87	9.6	
16	1,107	5.50	7.5	
17	1,240	5.85	7.1	
18	1,569	8.93	8.6	
19	1,779	8.69	7.4	
20	1,926	6.98	5.5	
21	2,151	5.26	3.7	
22	2,670	4.23	2.4	
23	3,178	3.90	1.9	
24	10,380	75.00	10.9	Upper Marker
25	12,549	0.00	0.0	



Assay Class: High Sensitivity DNA Assay  
Data Path: C:\...ents and Settings\Bioanalyzer\2012-11-19\2012-11-19\_003.xad

Created: 11/19/2012 11:58:06 AM  
Modified: 11/19/2012 12:37:30 PM

**Electropherogram Summary Continued ...**

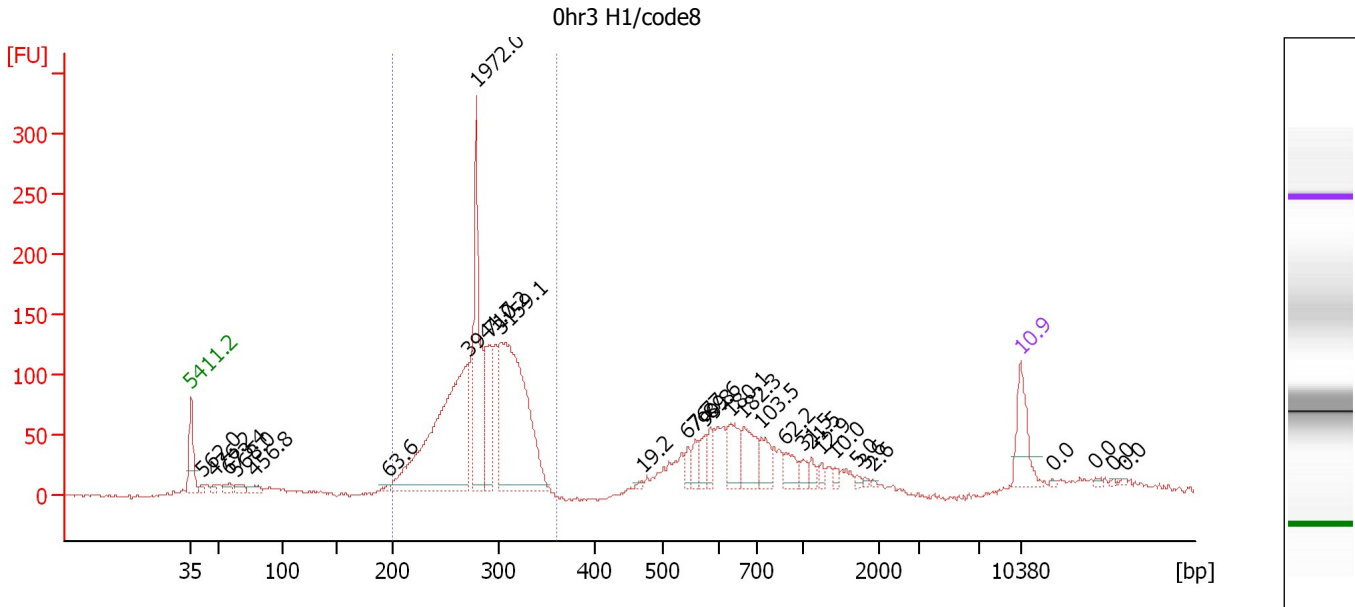
... Region table for sample 4 : 0hr1 H1/code7

From [bp]	To [bp]	Average Size [bp]	Molarity [pmol/l]	Conc. [pg/μl]	Corr. Area	% of Total	Size distribution in CV [%]	Color
200	365	292	5,128.9	973.61	805.6	71	11.5	■

Assay Class: High Sensitivity DNA Assay  
 Data Path: C:\...ents and Settings\Bioanalyzer\2012-11-19\2012-11-19\_003.xad

Created: 11/19/2012 11:58:06 AM  
 Modified: 11/19/2012 12:37:30 PM

**Electropherogram Summary Continued ...**



**Overall Results for sample 5 : Ohr3 H1/code8**

Number of peaks found: 30                      Corr. Area 1: 1,635.7  
 Noise: 1.2

**Peak table for sample 5 : Ohr3 H1/code8**

Peak	Size [bp]	Conc. [pg/μl]	Molarity [pmol/l]	Observations
1	35	125.00	5,411.3	Lower Marker
2	41	15.30	562.0	
3	48	15.01	476.2	
4	58	26.00	673.4	
5	64	23.95	568.0	
6	79	23.75	456.8	
7	198	8.29	63.6	
8	271	704.67	3,941.7	
9	279	362.84	1,972.0	
10	292	136.72	710.2	
11	302	629.20	3,159.1	
12	470	5.96	19.2	
13	545	24.34	67.7	
14	559	28.30	76.7	
15	576	37.95	99.8	
16	585	34.62	89.6	
17	630	74.91	180.1	
18	666	80.12	182.3	
19	734	50.13	103.5	
20	886	36.41	62.2	
21	995	20.66	31.5	
22	1,103	15.69	21.5	
23	1,239	10.52	12.9	
24	1,423	9.39	10.0	
25	1,708	5.64	5.0	
26	1,815	4.25	3.6	

Assay Class: High Sensitivity DNA Assay  
 Data Path: C:\...ents and Settings\Bioanalyzer\2012-11-19\2012-11-19\_003.xad

Created: 11/19/2012 11:58:06 AM  
 Modified: 11/19/2012 12:37:30 PM

### Electropherogram Summary Continued ...

#### ... Peak table for sample 5 : 0hr3 H1/code8

Peak	Size [bp]	Conc. [pg/μl]	Molarity [pmol/l]	Observations
27	1,914	3.31	2.6	
28	10,380	75.00	10.9	Upper Marker
29	13,115	0.00	0.0	
30	16,556	0.00	0.0	
31	18,100	0.00	0.0	
32	18,982	0.00	0.0	

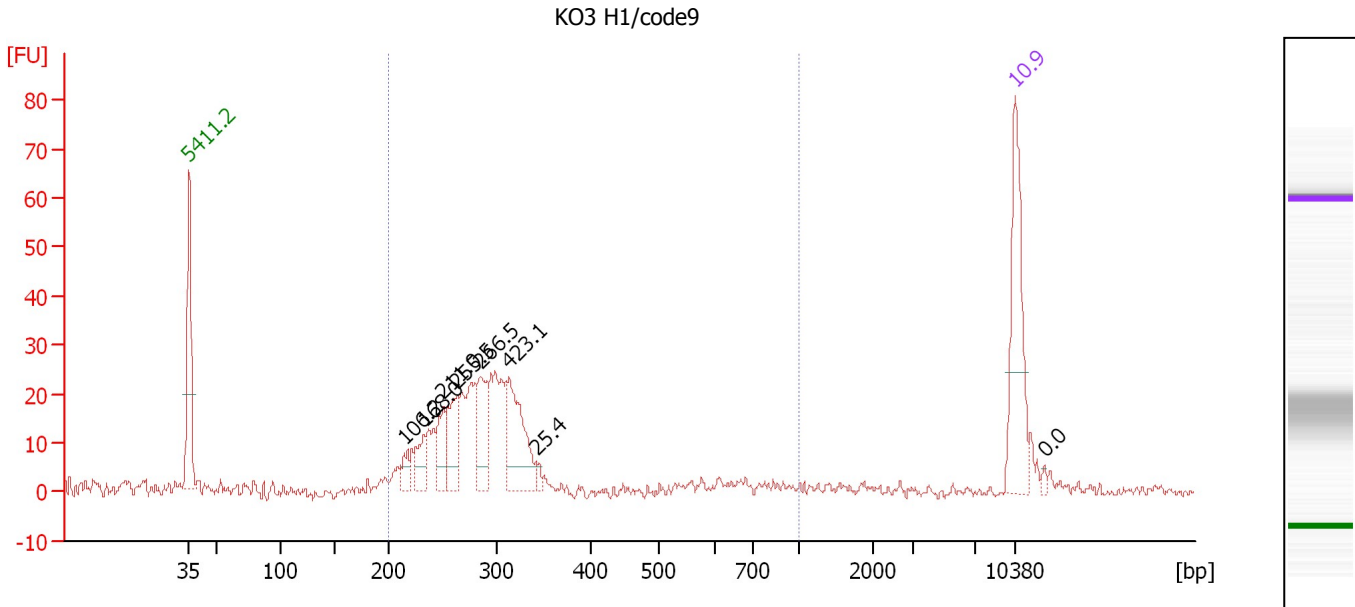
#### Region table for sample 5 : 0hr3 H1/code8

From [bp]	To [bp]	Average Size [bp]	Molarity [pmol/l]	Conc. [pg/μl]	Corr. Area	% of Total	Size distribution in CV [%]	Color
200	361	283	11,265.8	2,078.81	1,635.7	65	11.2	

Assay Class: High Sensitivity DNA Assay  
 Data Path: C:\...ents and Settings\Bioanalyzer\2012-11-19\2012-11-19\_003.xad

Created: 11/19/2012 11:58:06 AM  
 Modified: 11/19/2012 12:37:30 PM

**Electropherogram Summary Continued ...**



**Overall Results for sample 6 : KO3 H1/code9**

Number of peaks found: 8                      Corr. Area 1: 360.2  
 Noise: 1.5

**Peak table for sample 6 : KO3 H1/code9**

Peak	Size [bp]	Conc. [pg/μl]	Molarity [pmol/l]	Observations
1	35	125.00	5,411.3	Lower Marker
2	215	15.05	106.2	
3	233	25.85	168.0	
4	251	34.96	211.0	
5	263	44.34	255.5	
6	286	50.27	266.5	
7	314	87.62	423.1	
8	343	5.74	25.4	
9	10,380	75.00	10.9	Upper Marker
10	12,816	0.00	0.0	

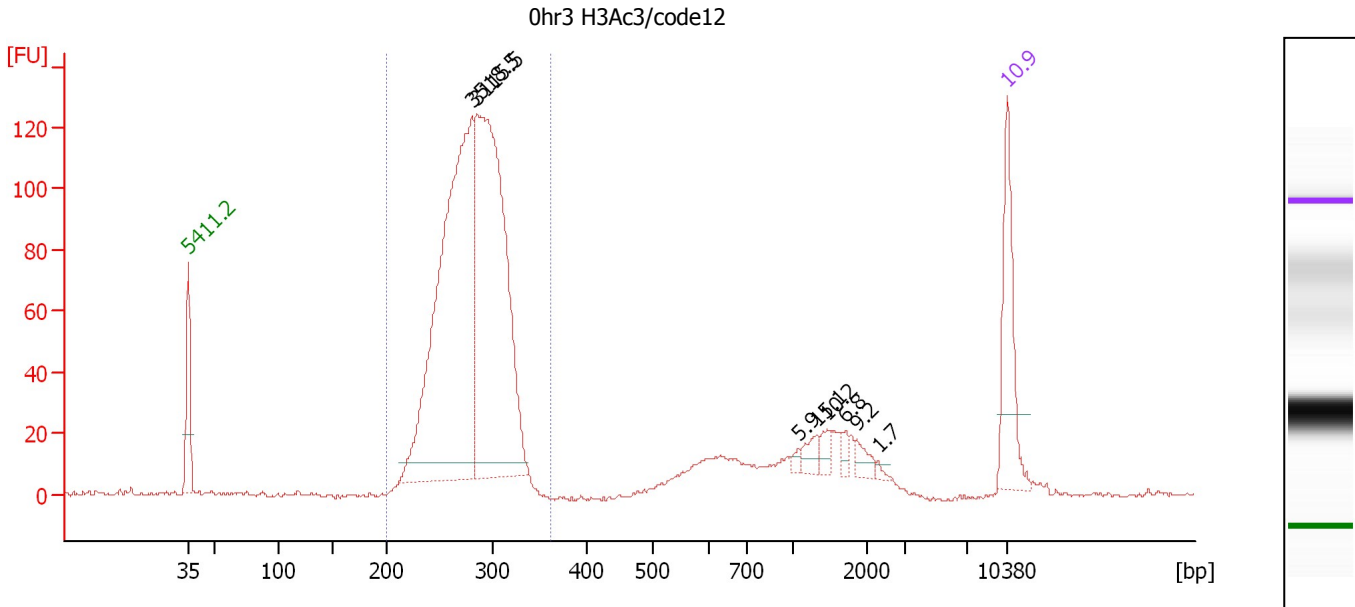
**Region table for sample 6 : KO3 H1/code9**

From [bp]	To [bp]	Average Size [bp]	Molarity [pmol/l]	Conc. [pg/μl]	Corr. Area	% of Total	Size distribution in CV [%]	Color
200	1,000	323	2,955.7	563.52	360.2	75	39.8	Blue

Assay Class: High Sensitivity DNA Assay  
 Data Path: C:\...ents and Settings\Bioanalyzer\2012-11-19\2012-11-19\_003.xad

Created: 11/19/2012 11:58:06 AM  
 Modified: 11/19/2012 12:37:30 PM

**Electropherogram Summary Continued ...**



**Overall Results for sample 7 : 0hr3 H3Ac3/code12**

Number of peaks found: 8                      Corr. Area 1: 1,252.2  
 Noise: 0.7

**Peak table for sample 7 : 0hr3 H3Ac3/code12**

Peak	Size [bp]	Conc. [pg/μl]	Molarity [pmol/l]	Observations
1	35	125.00	5,411.3	Lower Marker
2	281	652.70	3,518.5	
3	286	587.21	3,115.5	
4	1,076	4.18	5.9	
5	1,321	13.12	15.1	
6	1,465	9.82	10.2	
7	1,710	7.67	6.8	
8	1,861	11.31	9.2	
9	2,283	2.59	1.7	
10	10,380	75.00	10.9	Upper Marker

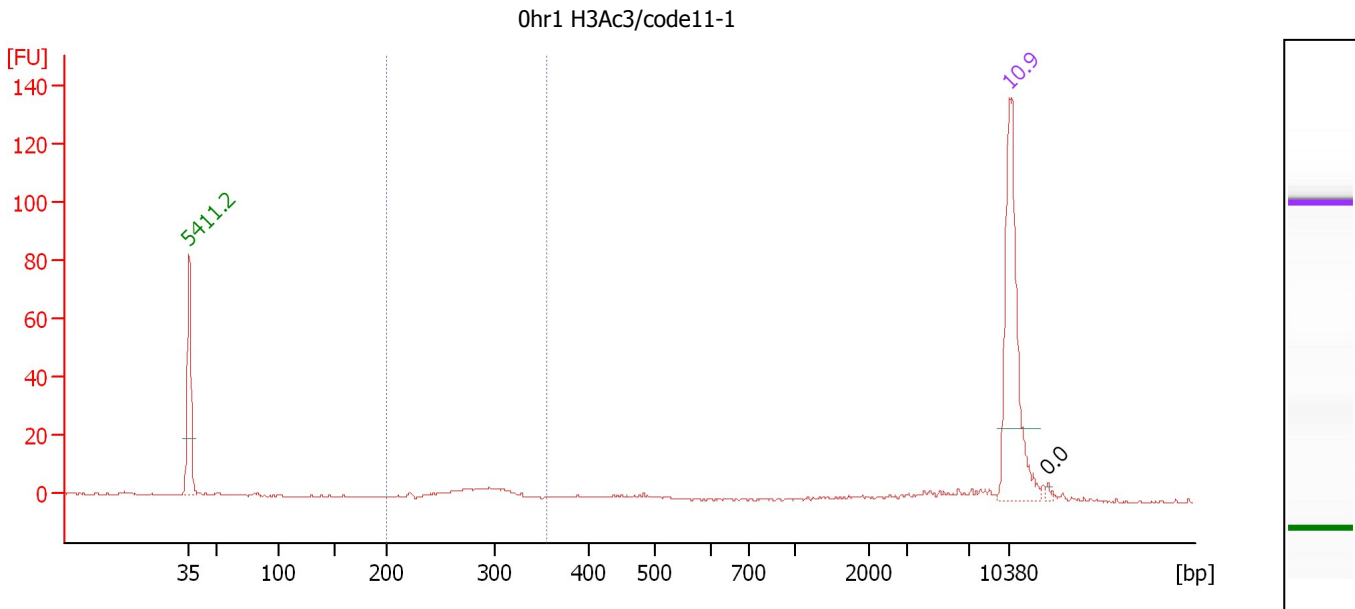
**Region table for sample 7 : 0hr3 H3Ac3/code12**

From [bp]	To [bp]	Average Size [bp]	Molarity [pmol/l]	Conc. [pg/μl]	Corr. Area	% of Total	Size distribution in CV [%]	Color
200	361	280	7,267.0	1,336.22	1,252.2	82	9.2	Blue

Assay Class: High Sensitivity DNA Assay  
 Data Path: C:\...ents and Settings\Bioanalyzer\2012-11-19\2012-11-19\_003.xad

Created: 11/19/2012 11:58:06 AM  
 Modified: 11/19/2012 12:37:30 PM

**Electropherogram Summary Continued ...**



**Overall Results for sample 8 : 0hr1 H3Ac3/code11-1**

Number of peaks found: 1                      Corr. Area 1: 24.2  
 Noise: 0.3

**Peak table for sample 8 : 0hr1 H3Ac3/code11-1**

Peak	Size [bp]	Conc. [pg/μl]	Molarity [pmol/l]	Observations
1	35	125.00	5,411.3	Lower Marker
2	10,380	75.00	10.9	Upper Marker
3	13,591	0.00	0.0	

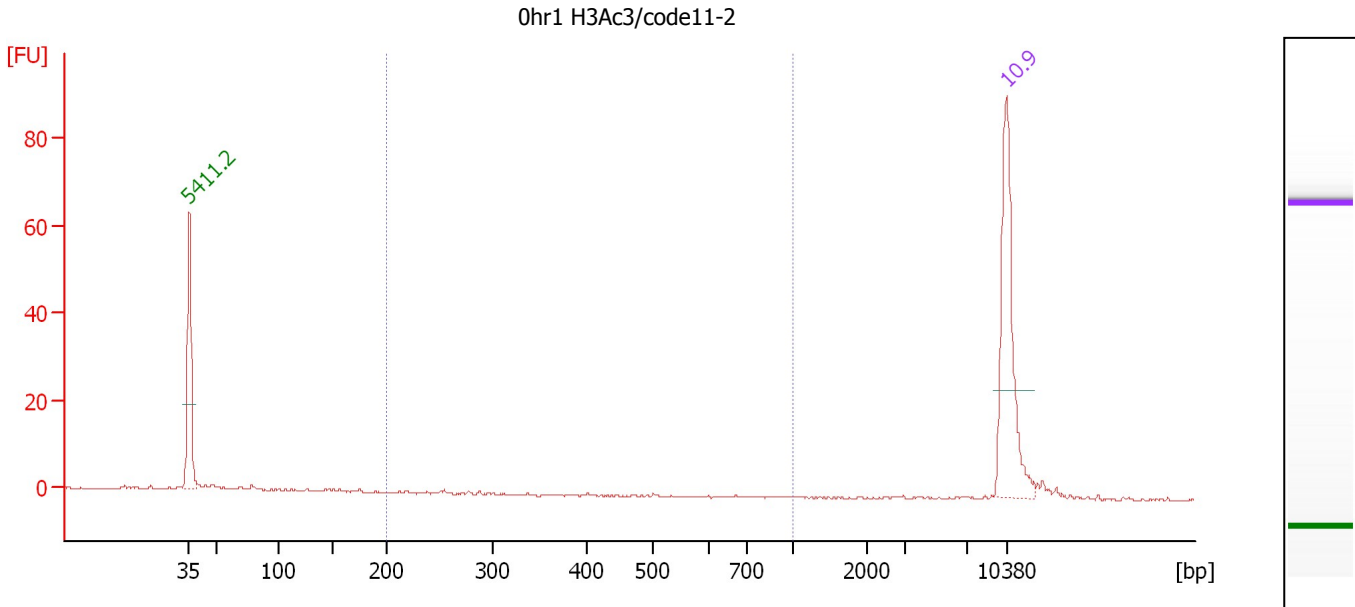
**Region table for sample 8 : 0hr1 H3Ac3/code11-1**

From [bp]	To [bp]	Average Size [bp]	Molarity [pmol/l]	Conc. [pg/μl]	Corr. Area	% of Total	Size distribution in CV [%]	Color
200	356	284	104.6	19.53	24.2	43	8.5	Blue

Assay Class: High Sensitivity DNA Assay  
 Data Path: C:\...ents and Settings\Bioanalyzer\2012-11-19\2012-11-19\_003.xad

Created: 11/19/2012 11:58:06 AM  
 Modified: 11/19/2012 12:37:30 PM

**Electropherogram Summary Continued ...**



**Overall Results for sample 9 : 0hr1 H3Ac3/code11-2**

Number of peaks found: 0                      Corr. Area 1: 1.2  
 Noise: 0.2

**Peak table for sample 9 : 0hr1 H3Ac3/code11-2**

Peak	Size [bp]	Conc. [pg/μl]	Molarity [pmol/l]	Observations
1	35	125.00	5,411.3	Lower Marker
2	10,380	75.00	10.9	Upper Marker

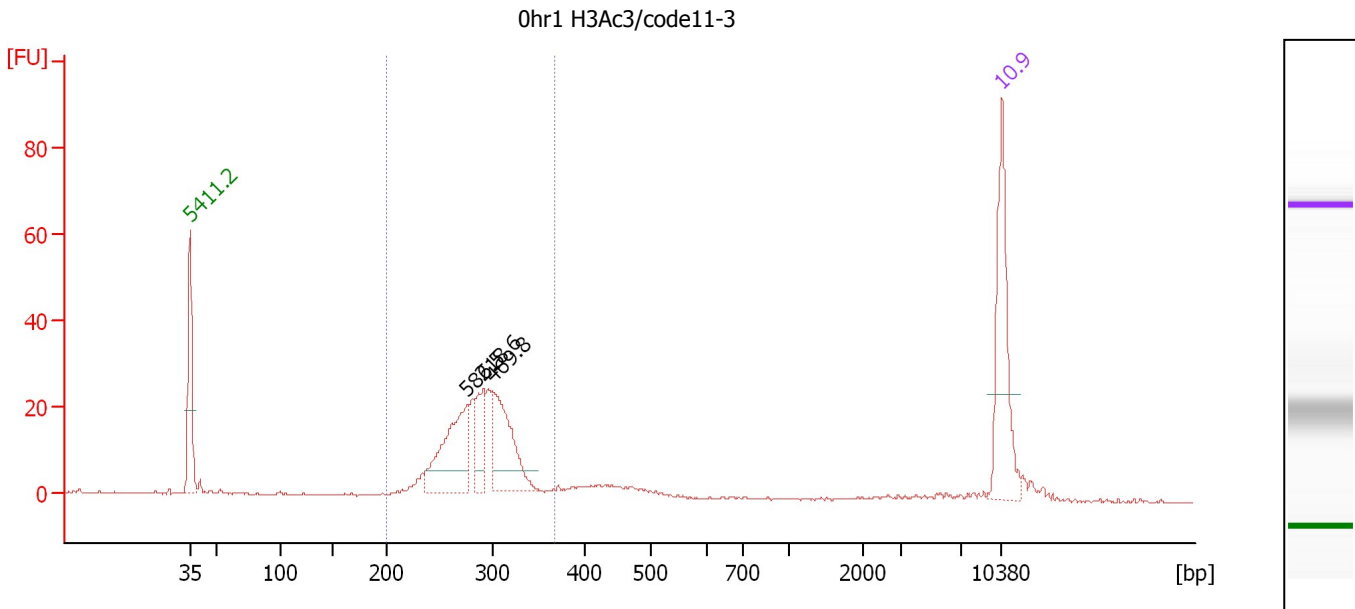
**Region table for sample 9 : 0hr1 H3Ac3/code11-2**

From [bp]	To [bp]	Average Size [bp]	Molarity [pmol/l]	Conc. [pg/μl]	Corr. Area	% of Total	Size distribution in CV [%]	Color
200	1,000	314	8.5	1.54	1.2	4	39.1	Blue

Assay Class: High Sensitivity DNA Assay  
 Data Path: C:\...ents and Settings\Bioanalyzer\2012-11-19\2012-11-19\_003.xad

Created: 11/19/2012 11:58:06 AM  
 Modified: 11/19/2012 12:37:30 PM

**Electropherogram Summary Continued ...**



**Overall Results for sample 10 : 0hr1 H3Ac3/code11-3**

Number of peaks found: 3                      Corr. Area 1: 237.3  
 Noise: 0.1

**Peak table for sample 10 : 0hr1 H3Ac3/code11-3**

Peak	Size [bp]	Conc. [pg/μl]	Molarity [pmol/l]	Observations
1	35	125.00	5,411.3	Lower Marker
2	276	107.00	586.5	
3	292	42.15	218.6	
4	301	93.28	469.8	
5	10,380	75.00	10.9	Upper Marker

**Region table for sample 10 : 0hr1 H3Ac3/code11-3**

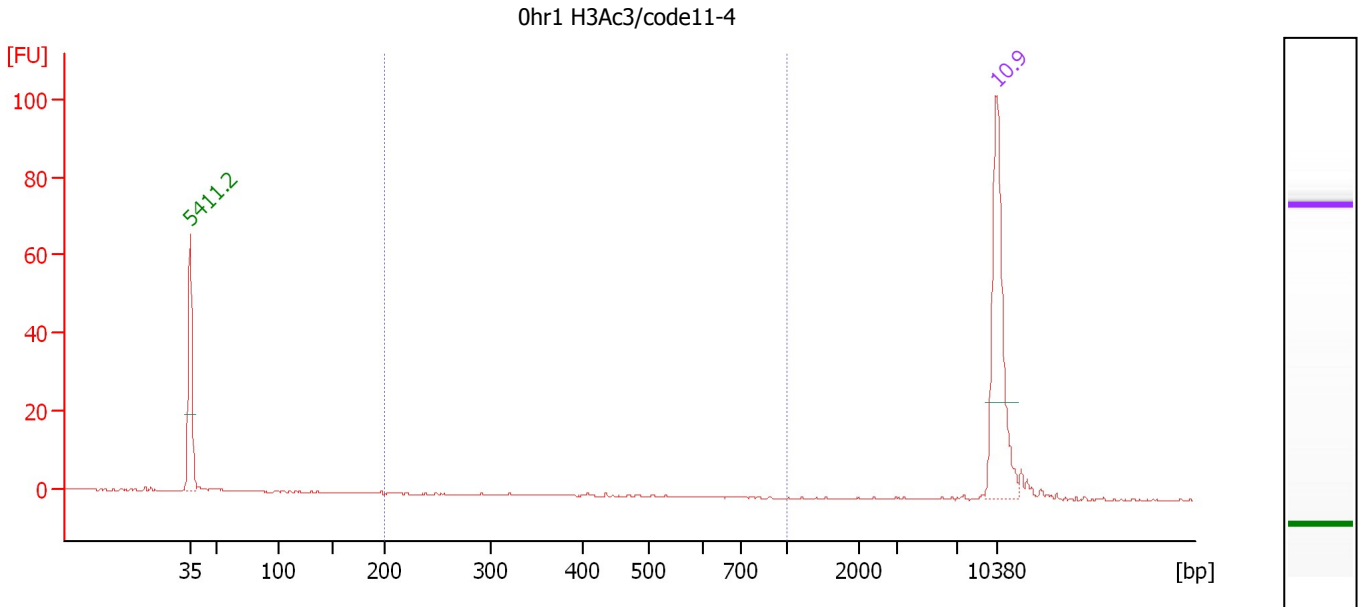
From [bp]	To [bp]	Average Size [bp]	Molarity [pmol/l]	Conc. [pg/μl]	Corr. Area	% of Total	Size distribution in CV [%]	Color
200	368	287	1,757.8	330.43	237.3	83	9.7	Blue



Assay Class: High Sensitivity DNA Assay  
 Data Path: C:\...ents and Settings\Bioanalyzer\2012-11-19\2012-11-19\_003.xad

Created: 11/19/2012 11:58:06 AM  
 Modified: 11/19/2012 12:37:30 PM

**Electropherogram Summary Continued ...**



**Overall Results for sample 11 : 0hr1 H3Ac3/code11-4**

Number of peaks found: 0                      Corr. Area 1: 0.6  
 Noise: 0.2

**Peak table for sample 11 : 0hr1 H3Ac3/code11-4**

Peak	Size [bp]	Conc. [pg/μl]	Molarity [pmol/l]	Observations
1	35	125.00	5,411.3	Lower Marker
2	10,380	75.00	10.9	Upper Marker

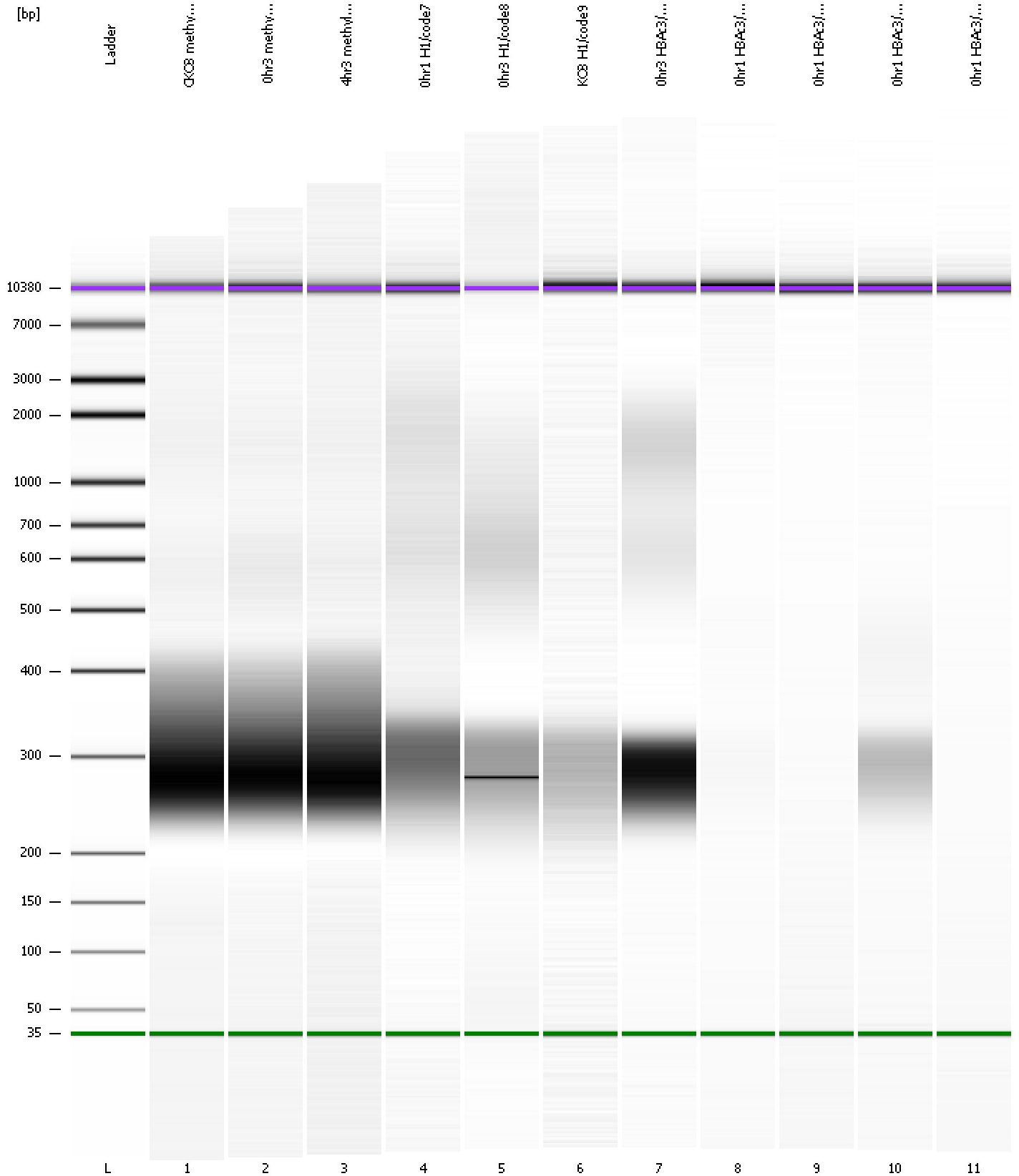
**Region table for sample 11 : 0hr1 H3Ac3/code11-4**

From [bp]	To [bp]	Average Size [bp]	Molarity [pmol/l]	Conc. [pg/μl]	Corr. Area	% of Total	Size distribution in CV [%]	Color
200	1,000	438	2.7	0.69	0.6	3	28.9	Blue

Assay Class: High Sensitivity DNA Assay  
Data Path: C:\...ents and Settings\Bioanalyzer\2012-11-19\2012-11-19\_003.xad

Created: 11/19/2012 11:58:06 AM  
Modified: 11/19/2012 12:37:30 PM

**Gel Image**



Assay Class: High Sensitivity DNA Assay  
 Data Path: C:\...ents and Settings\Bioanalyzer\2012-11-19\2012-11-19\_003.xad

Created: 11/19/2012 11:58:06 AM  
 Modified: 11/19/2012 12:37:30 PM

**Run Logbook**

Description	Number	Source	Category	Sub Category	Time	Time Zone	User	Host
Run ended on port 1 (Number of wells acquired: 12)		Instrument	Run		11/19/2012 12:39:25 PM	(GMT --08:00) Pacific Standard Time	UC Davis	D8XSMGH1
Run started on port 1 (File: C:\Documents and Settings\Bioanalyzer\2012-11-19\2012-11-19_003.xad)		Instrument	Run		11/19/2012 11:58:12 AM	(GMT --08:00) Pacific Standard Time	UC Davis	D8XSMGH1
Product Number : G2938B		Instrument	Run		11/19/2012 11:58:12 AM	(GMT --08:00) Pacific Standard Time	UC Davis	D8XSMGH1
Name :		Instrument	Run		11/19/2012 11:58:12 AM	(GMT --08:00) Pacific Standard Time	UC Davis	D8XSMGH1
Vendor : Agilent Technologies		Instrument	Run		11/19/2012 11:58:12 AM	(GMT --08:00) Pacific Standard Time	UC Davis	D8XSMGH1
Serial# : DE13701086		Instrument	Run		11/19/2012 11:58:12 AM	(GMT --08:00) Pacific Standard Time	UC Davis	D8XSMGH1
Firmware : C.01.069		Instrument	Run		11/19/2012 11:58:12 AM	(GMT --08:00) Pacific Standard Time	UC Davis	D8XSMGH1
Cartridge : Electrode		Instrument	Run		11/19/2012 11:58:12 AM	(GMT --08:00) Pacific Standard Time	UC Davis	D8XSMGH1