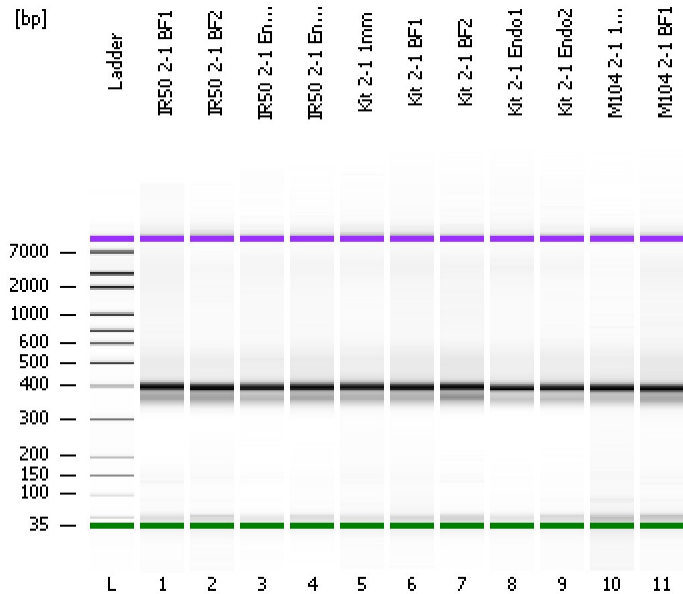


Assay Class: High Sensitivity DNA Assay  
Data Path: C:\...ents and Settings\Bioanalyzer\2012-11-20\2012-11-20\_001.xad

Created: 11/20/2012 12:04:14 PM  
Modified: 11/20/2012 12:47:33 PM

### Electrophoresis File Run Summary



#### Instrument Information:

Instrument Name: DE13701086      Firmware: C.01.069  
Serial#: DE13701086      Type: G2938B

#### Assay Information:

Assay Origin Path: C:\Program Files\Agilent\2100 bioanalyzer\2100 expert\assays\dsDNA\High Sensitivity DNA.xsy  
Assay Class: High Sensitivity DNA Assay  
Version: 1.03  
Assay Comments: Copyright © 2003-2010 Agilent Technologies

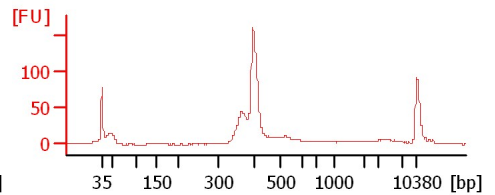
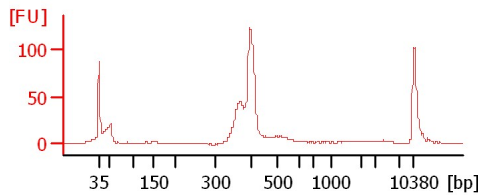
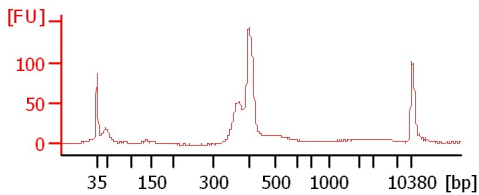
#### Chip Information:

Chip Lot #:  
Reagent Kit Lot #:  
Chip Comments:

IR50 2-1 BF1

IR50 2-1 BF2

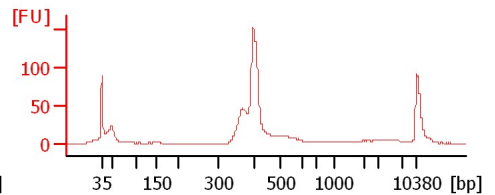
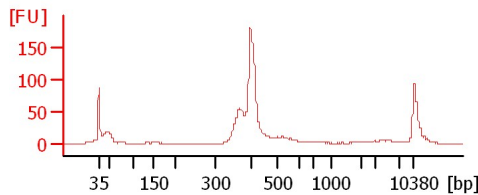
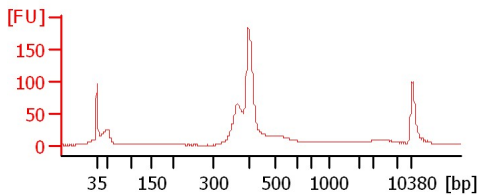
IR50 2-1 Endo1



IR50 2-1 Endo2

Kit 2-1 1mm

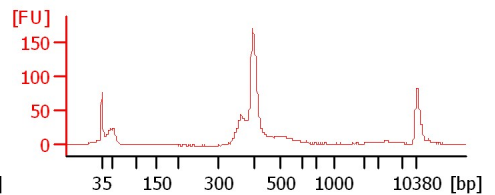
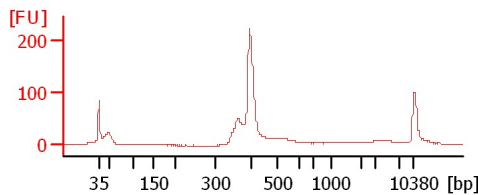
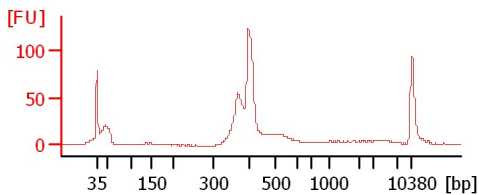
Kit 2-1 BF1



Kit 2-1 BF2

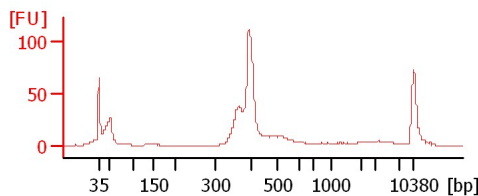
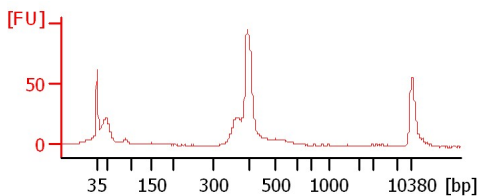
Kit 2-1 Endo1

Kit 2-1 Endo2



M104 2-1 1mm

M104 2-1 BF1



Assay Class: High Sensitivity DNA Assay  
Data Path: C:\...ents and Settings\Bioanalyzer\2012-11-20\2012-11-20\_001.xad

Created: 11/20/2012 12:04:14 PM  
Modified: 11/20/2012 12:47:33 PM

**Electrophoresis File Run Summary (Chip Summary)**

Sample Name	Sample Comment	Rest. Digest	Status	Observation	Result Label	Result Color
IR50 2-1 BF1		<input type="checkbox"/>	✓			
IR50 2-1 BF2		<input type="checkbox"/>	✓			
IR50 2-1 Endo1		<input type="checkbox"/>	✓			
IR50 2-1 Endo2		<input type="checkbox"/>	✓			
Kit 2-1 1mm		<input type="checkbox"/>	✓			
Kit 2-1 BF1		<input type="checkbox"/>	✓			
Kit 2-1 BF2		<input type="checkbox"/>	✓			
Kit 2-1 Endo1		<input type="checkbox"/>	✓			
Kit 2-1 Endo2		<input type="checkbox"/>	✓			
M104 2-1 1mm		<input type="checkbox"/>	✓			
M104 2-1 BF1		<input type="checkbox"/>	✓			
Ladder		<input type="checkbox"/>	✓			

**Chip Lot #**

**Reagent Kit Lot #**

**Chip Comments :**

Assay Class: High Sensitivity DNA Assay  
Data Path: C:\...ents and Settings\Bioanalyzer\2012-11-20\2012-11-20\_001.xad

Created: 11/20/2012 12:04:14 PM  
Modified: 11/20/2012 12:47:33 PM

**Electrophoresis Assay Details**

**General Analysis Settings**

Number of Available Sample and Ladder Wells (Max.) : 12  
Minimum Visible Range [s] : 32  
Maximum Visible Range [s] : 138  
Start Analysis Time Range [s] : 33  
End Analysis Time Range [s] : 137.5  
Ladder Concentration [pg/ $\mu$ l] : 1950  
Uses Standard Area for Ladder Fragments  
Lower Marker Concentration [pg/ $\mu$ l] : 125  
Upper Marker Concentration [pg/ $\mu$ l] : 75  
Used Upper Marker for Quantitation  
Standard Curve Fit is Point to Point  
Show Data Aligned to Lower and Upper Marker

**Integrator Settings**

Integration Start Time [s] : 33.05  
Integration End Time [s] : 137  
Slope Threshold : 0.8  
Height Threshold [FU] : 5  
Area Threshold : 0.1  
Width Threshold [s] : 0.6  
Baseline Plateau [s] : 0.5

**Filter Settings**

Filter Width [s] : 0.5  
Polynomial Order : 4

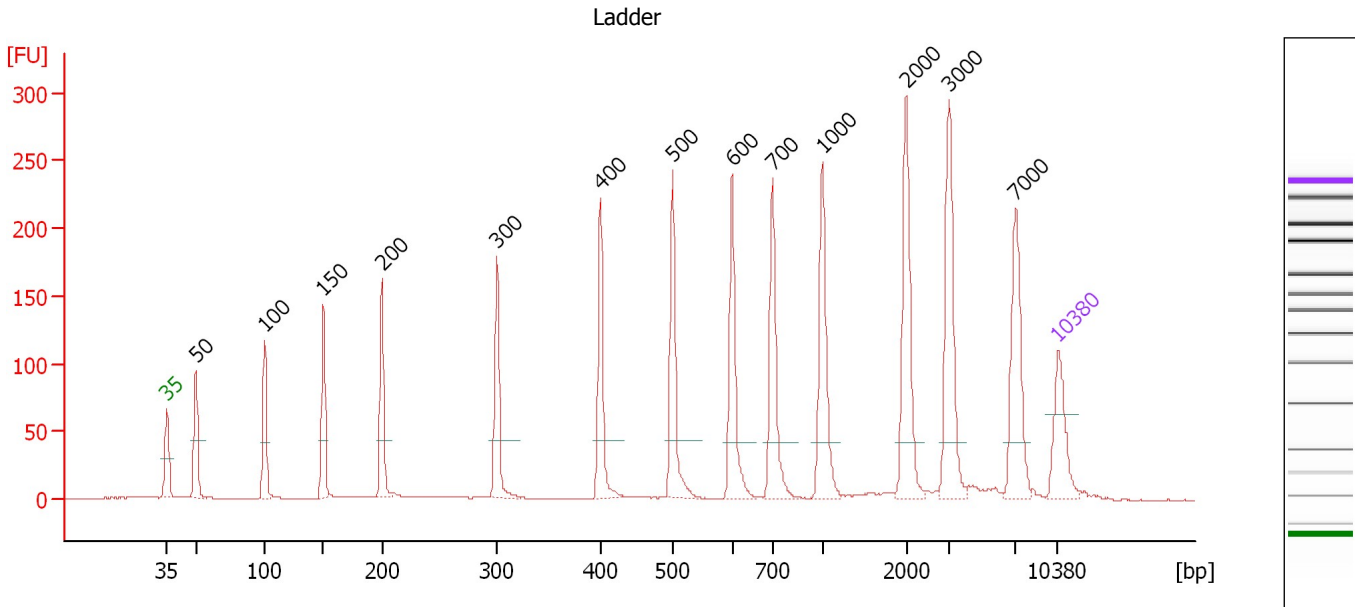
**Ladder**

Ladder Peak	Size	Area
1	35	160
2	50	210
3	100	208
4	150	221
5	200	242
6	300	270
7	400	305
8	500	306
9	600	336
10	700	321
11	1000	366
12	2000	413
13	3000	411
14	7000	400
15	10380	214

Assay Class: High Sensitivity DNA Assay  
 Data Path: C:\...ents and Settings\Bioanalyzer\2012-11-20\2012-11-20\_001.xad

Created: 11/20/2012 12:04:14 PM  
 Modified: 11/20/2012 12:47:33 PM

**Electropherogram Summary**



**Overall Results for Ladder**

Noise: 0.2

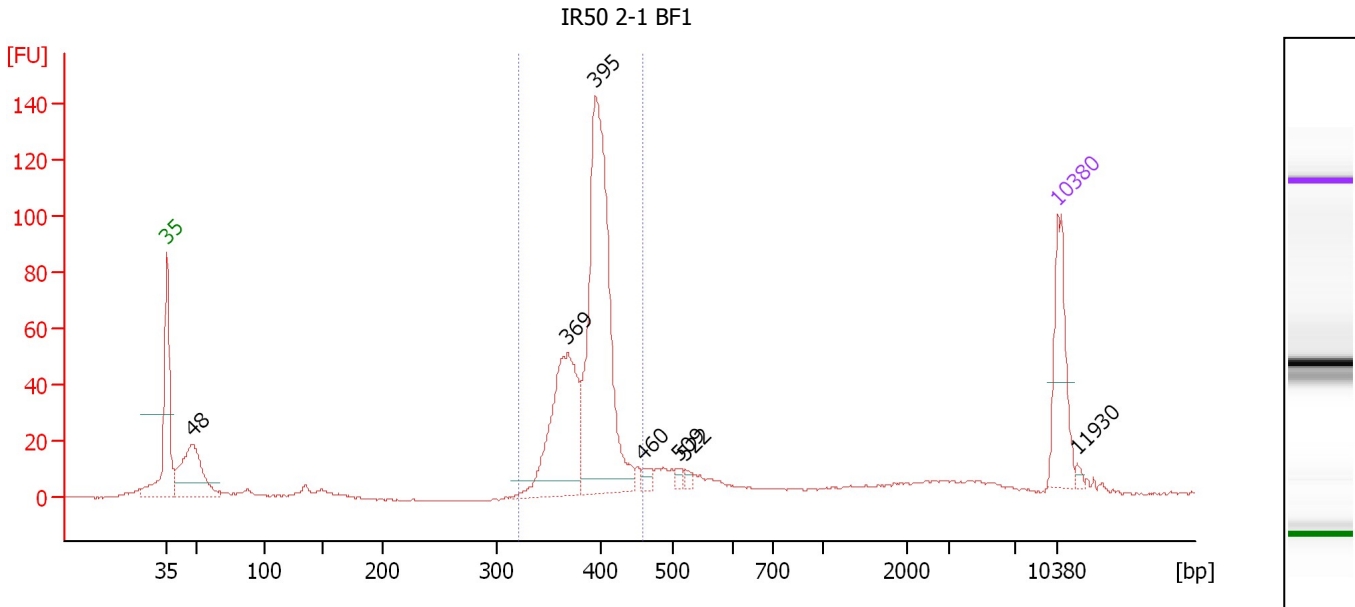
**Peak table for Ladder**

Peak	Size [bp]	Conc. [pg/μl]	Molarity [pmol/l]	Observations
1	35	125.00	5,411.3	Lower Marker
2	50	150.00	4,545.5	Ladder Peak
3	100	150.00	2,272.7	Ladder Peak
4	150	150.00	1,515.2	Ladder Peak
5	200	150.00	1,136.4	Ladder Peak
6	300	150.00	757.6	Ladder Peak
7	400	150.00	568.2	Ladder Peak
8	500	150.00	454.5	Ladder Peak
9	600	150.00	378.8	Ladder Peak
10	700	150.00	324.7	Ladder Peak
11	1,000	150.00	227.3	Ladder Peak
12	2,000	150.00	113.6	Ladder Peak
13	3,000	150.00	75.8	Ladder Peak
14	7,000	150.00	32.5	Ladder Peak
15	10,380	75.00	10.9	Upper Marker

Assay Class: High Sensitivity DNA Assay  
 Data Path: C:\...ents and Settings\Bioanalyzer\2012-11-20\2012-11-20\_001.xad

Created: 11/20/2012 12:04:14 PM  
 Modified: 11/20/2012 12:47:33 PM

**Electropherogram Summary Continued ...**



**Overall Results for sample 1 : IR50 2-1 BF1**

Number of peaks found: 7      Corr. Area 1: 547.7  
 Noise: 0.3

**Peak table for sample 1 : IR50 2-1 BF1**

Peak	Size [bp]	Conc. [pg/μl]	Molarity [pmol/l]	Observations
1	35	125.00	5,411.3	Lower Marker
2	48	148.47	4,702.3	
3	369	209.75	862.4	
4	395	418.14	1,602.0	
5	460	9.65	31.8	
6	509	5.66	16.9	
7	522	5.49	15.9	
8	10,380	75.00	10.9	Upper Marker
9	11,930	0.00	0.0	

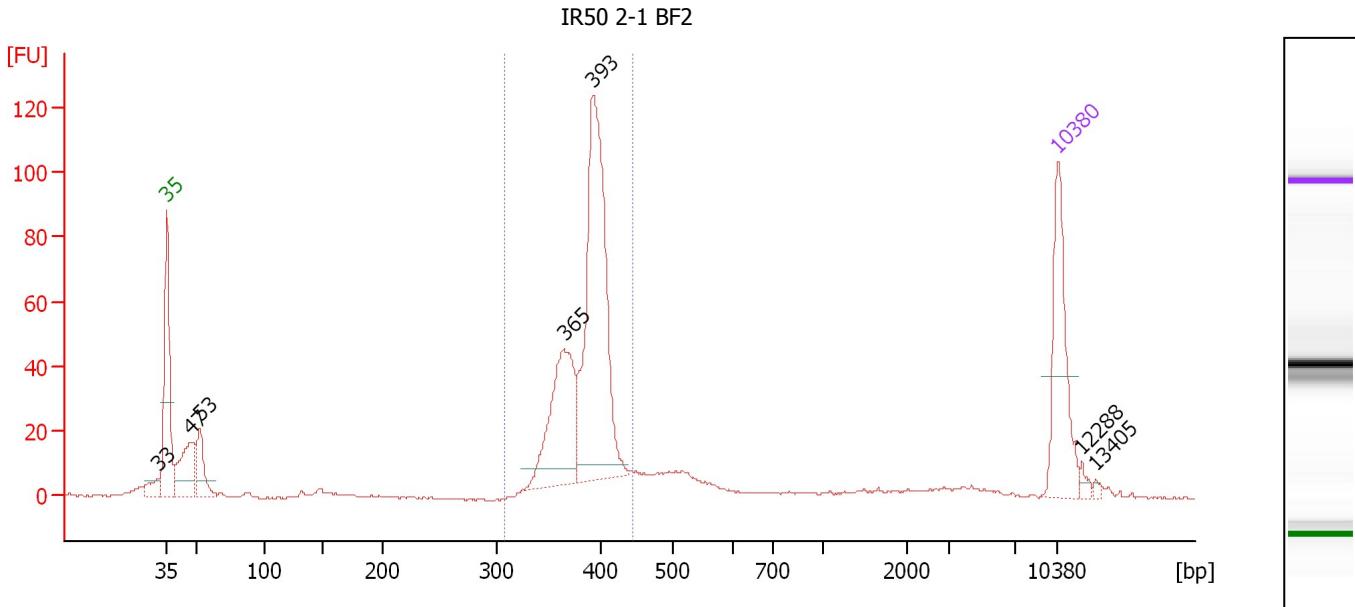
**Region table for sample 1 : IR50 2-1 BF1**

From [bp]	To [bp]	Average Size [bp]	Molarity [pmol/l]	Conc. [pg/μl]	Corr. Area	% of Total	Size distribution in CV [%]	Color
321	458	391	2,460.6	632.55	547.7	68	5.8	Blue

Assay Class: High Sensitivity DNA Assay  
 Data Path: C:\...ents and Settings\Bioanalyzer\2012-11-20\2012-11-20\_001.xad

Created: 11/20/2012 12:04:14 PM  
 Modified: 11/20/2012 12:47:33 PM

**Electropherogram Summary Continued ...**



**Overall Results for sample 2 : IR50 2-1 BF2**

Number of peaks found: 7                      Corr. Area 1: 478.3  
 Noise: 0.3

**Peak table for sample 2 : IR50 2-1 BF2**

Peak	Size [bp]	Conc. [pg/μl]	Molarity [pmol/l]	Observations
1	33	0.00	0.0	
2	35	125.00	5,411.3	Lower Marker
3	47	78.31	2,513.2	
4	53	47.44	1,361.2	
5	365	133.37	553.9	
6	393	280.82	1,083.0	
7	10,380	75.00	10.9	Upper Marker
8	12,288	0.00	0.0	
9	13,405	0.00	0.0	

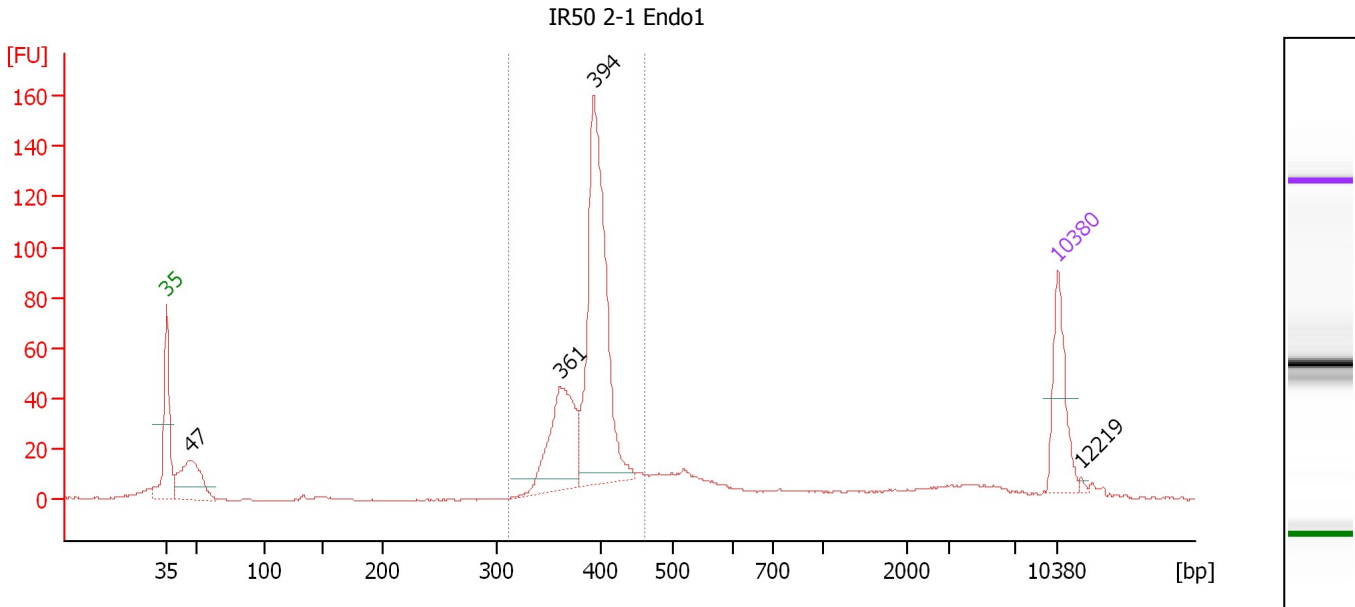
**Region table for sample 2 : IR50 2-1 BF2**

From [bp]	To [bp]	Average Size [bp]	Molarity [pmol/l]	Conc. [pg/μl]	Corr. Area	% of Total	Size distribution in CV [%]	Color
308	445	387	1,836.7	467.62	478.3	66	5.6	Blue

Assay Class: High Sensitivity DNA Assay  
 Data Path: C:\...ents and Settings\Bioanalyzer\2012-11-20\2012-11-20\_001.xad

Created: 11/20/2012 12:04:14 PM  
 Modified: 11/20/2012 12:47:33 PM

**Electropherogram Summary Continued ...**



**Overall Results for sample 3 : IR50 2-1 Endo1**

Number of peaks found: 4                      Corr. Area 1: 546.3  
 Noise: 0.3

**Peak table for sample 3 : IR50 2-1 Endo1**

Peak	Size [bp]	Conc. [pg/μl]	Molarity [pmol/l]	Observations
1	35	125.00	5,411.3	Lower Marker
2	47	135.07	4,319.9	
3	361	172.98	725.3	
4	394	416.56	1,602.8	
5	10,380	75.00	10.9	Upper Marker
6	12,219	0.00	0.0	

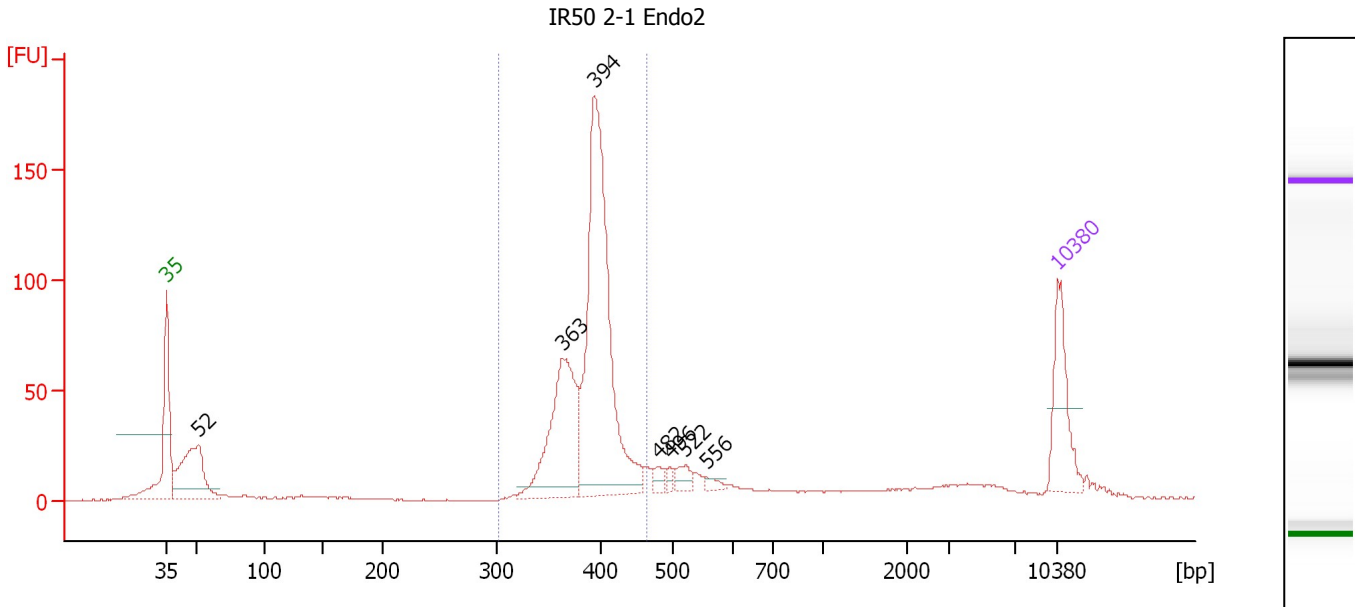
**Region table for sample 3 : IR50 2-1 Endo1**

From [bp]	To [bp]	Average Size [bp]	Molarity [pmol/l]	Conc. [pg/μl]	Corr. Area	% of Total	Size distribution in CV [%]	Color
312	463	391	2,588.2	665.58	546.3	67	6.1	Blue

Assay Class: High Sensitivity DNA Assay  
 Data Path: C:\...ents and Settings\Bioanalyzer\2012-11-20\2012-11-20\_001.xad

Created: 11/20/2012 12:04:14 PM  
 Modified: 11/20/2012 12:47:33 PM

**Electropherogram Summary Continued ...**



**Overall Results for sample 4 : IR50 2-1 Endo2**

Number of peaks found: 7                      Corr. Area 1: 722.9  
 Noise: 0.2

**Peak table for sample 4 : IR50 2-1 Endo2**

Peak	Size [bp]	Conc. [pg/μl]	Molarity [pmol/l]	Observations
1	35	125.00	5,411.3	Lower Marker
2	52	172.35	5,037.4	
3	363	223.99	934.1	
4	394	490.15	1,884.8	
5	482	12.60	39.7	
6	496	8.32	25.4	
7	522	18.68	54.2	
8	556	8.62	23.5	
9	10,380	75.00	10.9	Upper Marker

**Region table for sample 4 : IR50 2-1 Endo2**

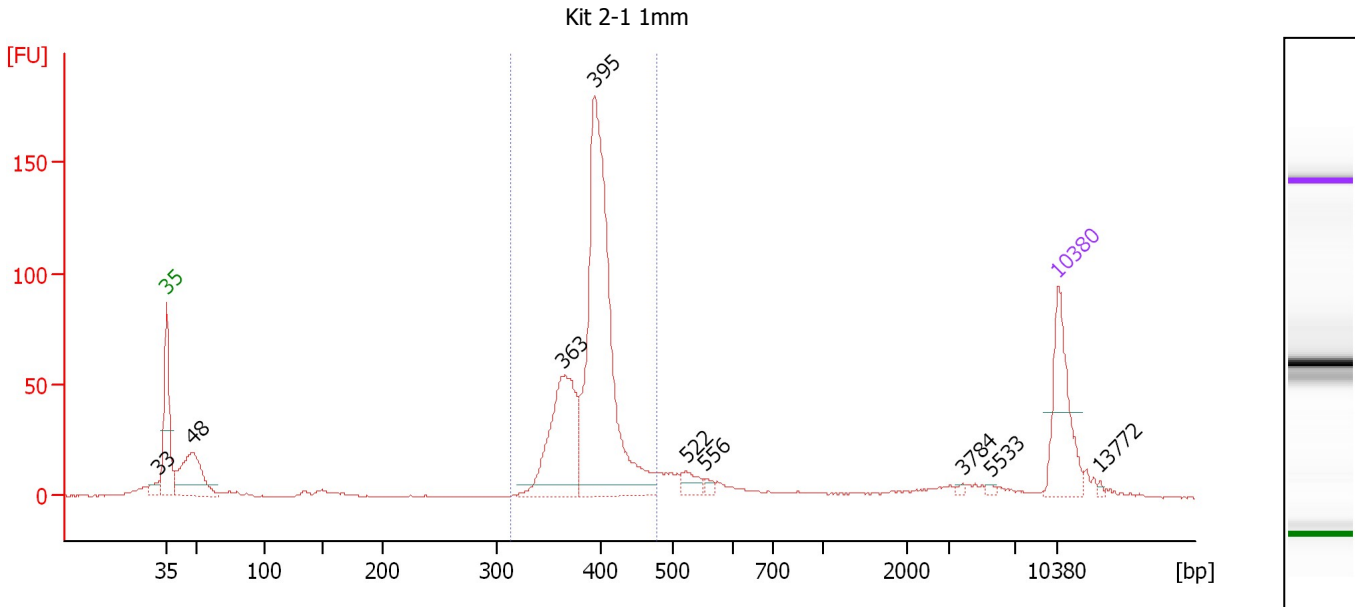
From [bp]	To [bp]	Average Size [bp]	Molarity [pmol/l]	Conc. [pg/μl]	Corr. Area	% of Total	Size distribution in CV [%]	Color
301	465	391	2,890.2	743.33	722.9	64	6.6	Blue



Assay Class: High Sensitivity DNA Assay  
 Data Path: C:\...ents and Settings\Bioanalyzer\2012-11-20\2012-11-20\_001.xad

Created: 11/20/2012 12:04:14 PM  
 Modified: 11/20/2012 12:47:33 PM

**Electropherogram Summary Continued ...**



**Overall Results for sample 5 : Kit 2-1 1mm**

Number of peaks found: 9                      Corr. Area 1: 687.6  
 Noise: 0.3

**Peak table for sample 5 : Kit 2-1 1mm**

Peak	Size [bp]	Conc. [pg/µl]	Molarity [pmol/l]	Observations
1	33	0.00	0.0	
2	35	125.00	5,411.3	Lower Marker
3	48	122.87	3,901.5	
4	363	178.90	746.4	
5	395	440.76	1,691.8	
6	522	16.41	47.6	
7	556	5.88	16.0	
8	3,784	2.51	1.0	
9	5,533	2.37	0.6	
10	10,380	75.00	10.9	Upper Marker
11	13,772	0.00	0.0	

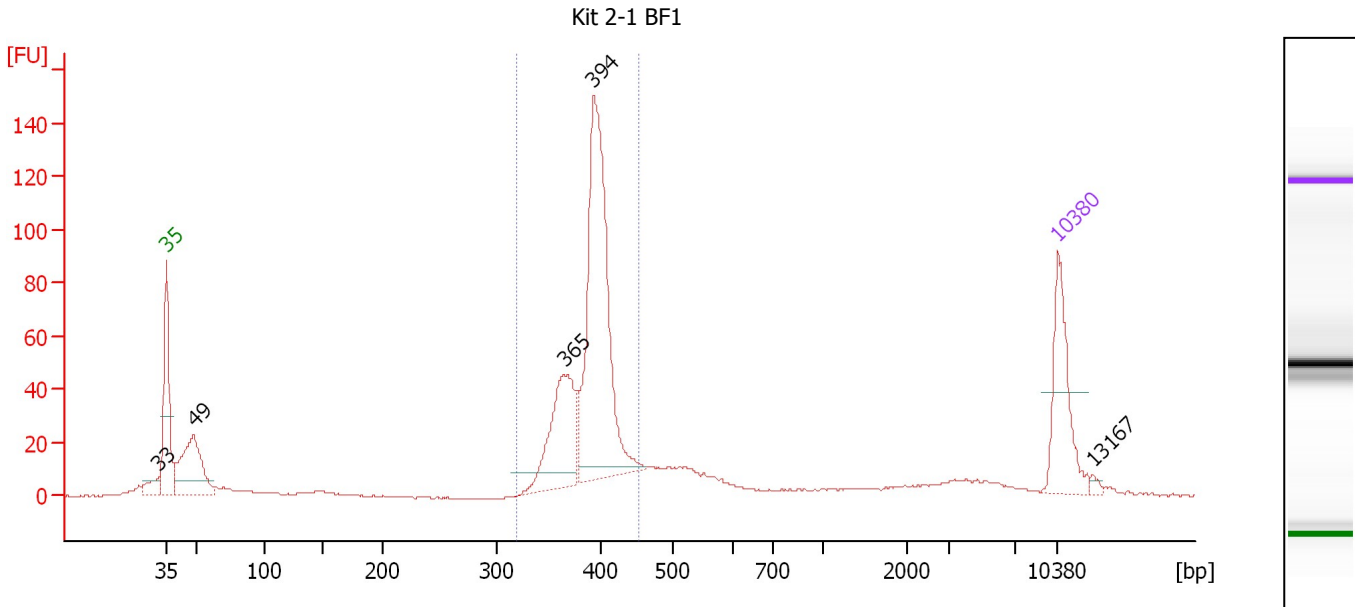
**Region table for sample 5 : Kit 2-1 1mm**

From [bp]	To [bp]	Average Size [bp]	Molarity [pmol/l]	Conc. [pg/µl]	Corr. Area	% of Total	Size distribution in CV [%]	Color
314	478	394	2,432.0	629.57	687.6	65	6.8	Blue

Assay Class: High Sensitivity DNA Assay  
 Data Path: C:\...ents and Settings\Bioanalyzer\2012-11-20\2012-11-20\_001.xad

Created: 11/20/2012 12:04:14 PM  
 Modified: 11/20/2012 12:47:33 PM

**Electropherogram Summary Continued ...**



**Overall Results for sample 6 : Kit 2-1 BF1**

Number of peaks found: 5                      Corr. Area 1: 546.4  
 Noise: 0.3

**Peak table for sample 6 : Kit 2-1 BF1**

Peak	Size [bp]	Conc. [pg/μl]	Molarity [pmol/l]	Observations
1	33	0.00	0.0	
2	35	125.00	5,411.3	Lower Marker
3	49	138.56	4,304.8	
4	365	133.89	556.1	
5	394	348.35	1,340.6	
6	10,380	75.00	10.9	Upper Marker
7	13,167	0.00	0.0	

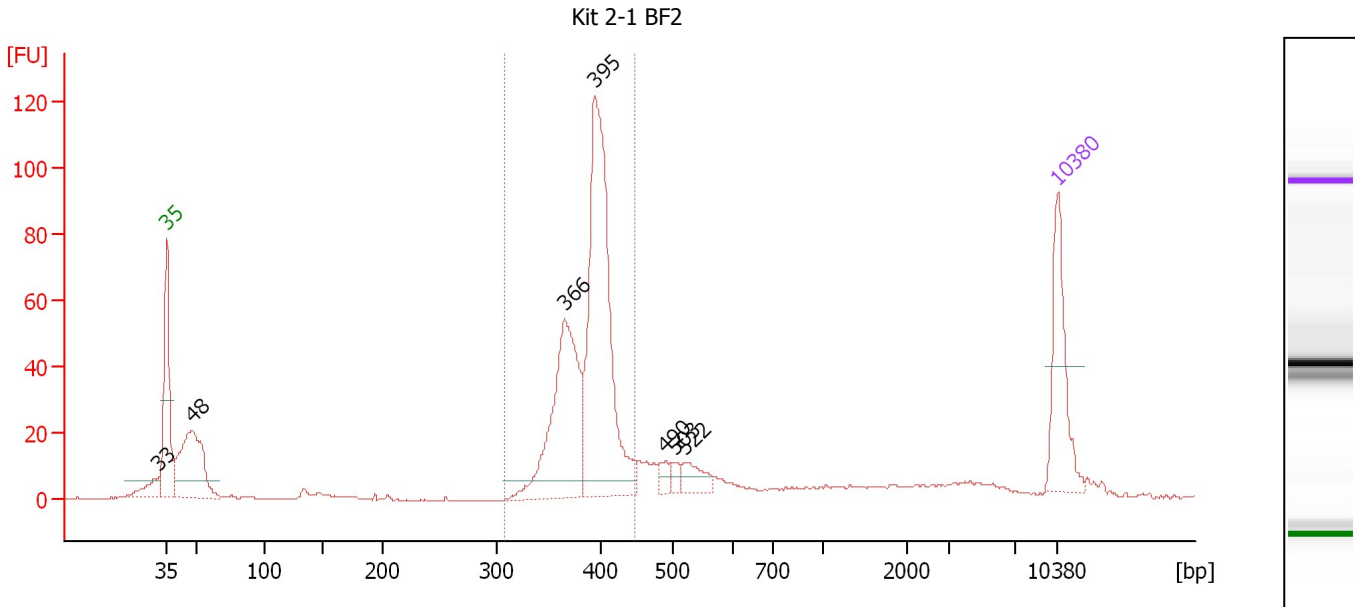
**Region table for sample 6 : Kit 2-1 BF1**

From [bp]	To [bp]	Average Size [bp]	Molarity [pmol/l]	Conc. [pg/μl]	Corr. Area	% of Total	Size distribution in CV [%]	Color
319	453	391	2,097.9	539.93	546.4	62	5.7	Blue

Assay Class: High Sensitivity DNA Assay  
 Data Path: C:\...ents and Settings\Bioanalyzer\2012-11-20\2012-11-20\_001.xad

Created: 11/20/2012 12:04:14 PM  
 Modified: 11/20/2012 12:47:33 PM

**Electropherogram Summary Continued ...**



**Overall Results for sample 7 : Kit 2-1 BF2**

Number of peaks found: 7                      Corr. Area 1: 486.9  
 Noise: 0.2

**Peak table for sample 7 : Kit 2-1 BF2**

Peak	Size [bp]	Conc. [pg/μl]	Molarity [pmol/l]	Observations
1	33	0.00	0.0	
2	35	125.00	5,411.3	Lower Marker
3	48	172.54	5,457.7	
4	366	216.37	896.3	
5	395	355.36	1,363.8	
6	490	12.99	40.2	
7	503	10.59	31.9	
8	522	24.64	71.6	
9	10,380	75.00	10.9	Upper Marker

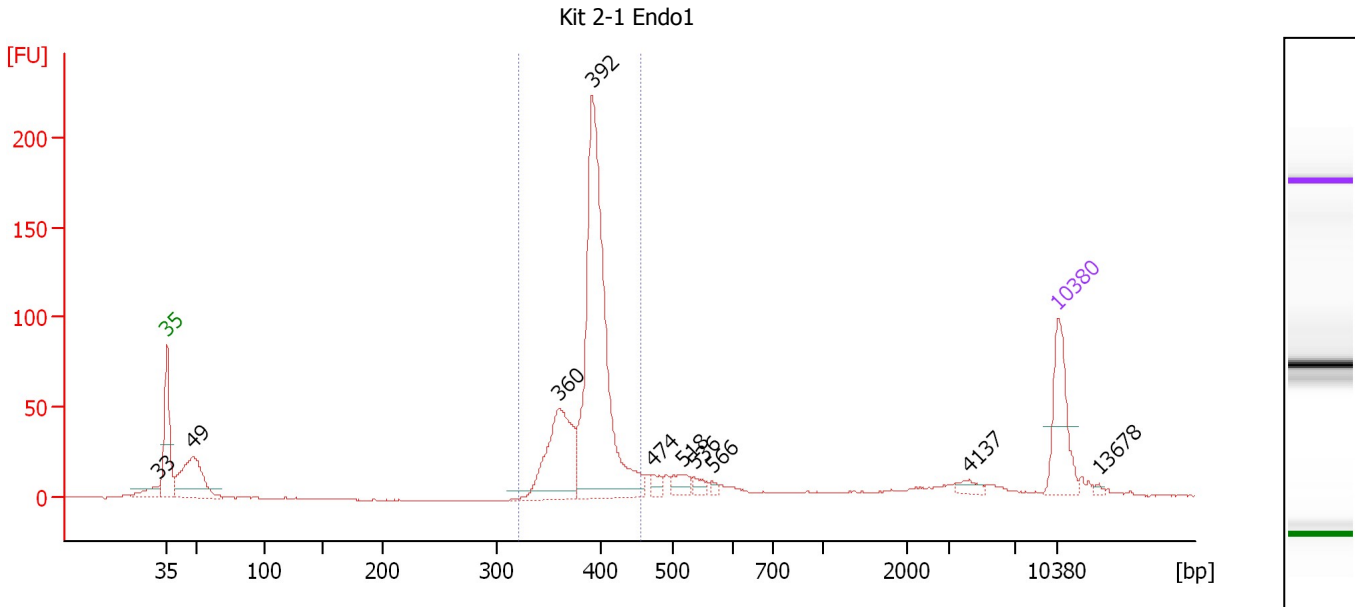
**Region table for sample 7 : Kit 2-1 BF2**

From [bp]	To [bp]	Average Size [bp]	Molarity [pmol/l]	Conc. [pg/μl]	Corr. Area	% of Total	Size distribution in CV [%]	Color
308	447	388	2,237.2	571.96	486.9	59	5.9	Blue

Assay Class: High Sensitivity DNA Assay  
 Data Path: C:\...ents and Settings\Bioanalyzer\2012-11-20\2012-11-20\_001.xad

Created: 11/20/2012 12:04:14 PM  
 Modified: 11/20/2012 12:47:33 PM

**Electropherogram Summary Continued ...**



**Overall Results for sample 8 : Kit 2-1 Endo1**

Number of peaks found: 10      Corr. Area 1: 666.2  
 Noise: 0.4

**Peak table for sample 8 : Kit 2-1 Endo1**

Peak	Size [bp]	Conc. [pg/μl]	Molarity [pmol/l]	Observations
1	33	0.00	0.0	
2	35	125.00	5,411.3	Lower Marker
3	49	155.54	4,854.3	
4	360	172.93	728.3	
5	392	519.41	2,005.6	
6	474	13.86	44.3	
7	518	21.07	61.7	
8	536	10.36	29.3	
9	566	4.82	12.9	
10	4,137	9.92	3.6	
11	10,380	75.00	10.9	Upper Marker
12	13,678	0.00	0.0	

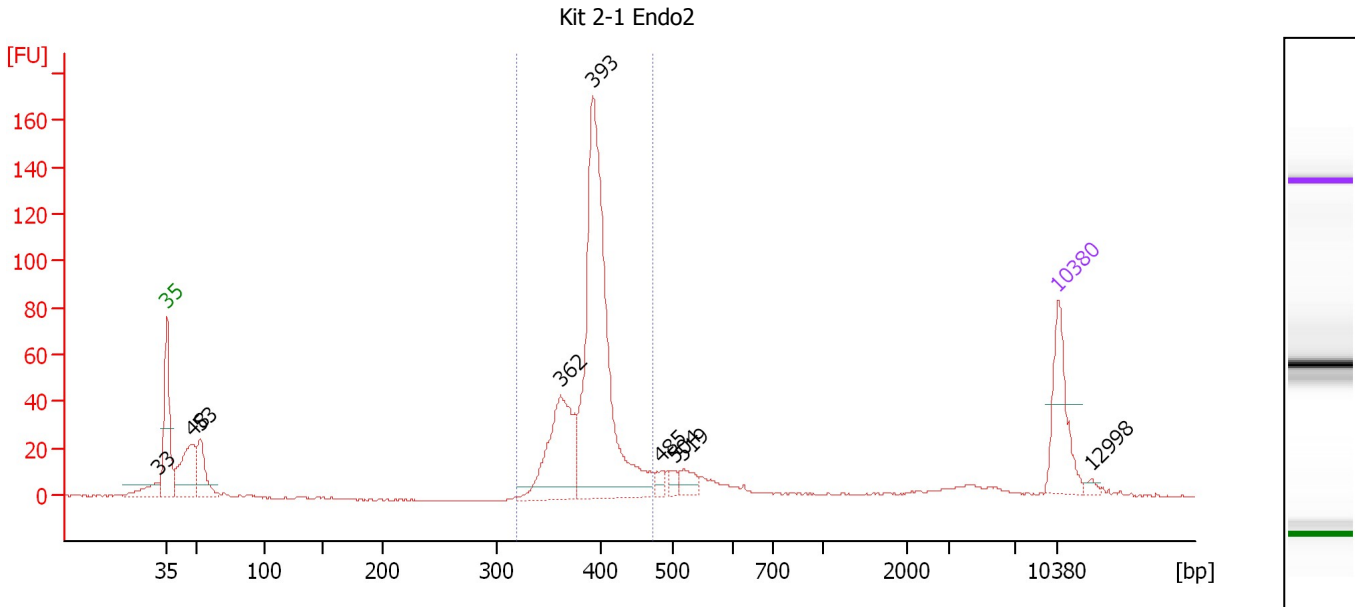
**Region table for sample 8 : Kit 2-1 Endo1**

From [bp]	To [bp]	Average Size [bp]	Molarity [pmol/l]	Conc. [pg/μl]	Corr. Area	% of Total	Size distribution in CV [%]	Color
321	456	390	2,631.0	676.23	666.2	64	5.6	Blue

Assay Class: High Sensitivity DNA Assay  
 Data Path: C:\...ents and Settings\Bioanalyzer\2012-11-20\2012-11-20\_001.xad

Created: 11/20/2012 12:04:14 PM  
 Modified: 11/20/2012 12:47:33 PM

**Electropherogram Summary Continued ...**



**Overall Results for sample 9 : Kit 2-1 Endo2**

Number of peaks found: 9                      Corr. Area 1: 563.4  
 Noise: 0.4

**Peak table for sample 9 : Kit 2-1 Endo2**

Peak	Size [bp]	Conc. [pg/μl]	Molarity [pmol/l]	Observations
1	33	0.00	0.0	
2	35	125.00	5,411.3	Lower Marker
3	48	125.63	3,968.7	
4	53	74.59	2,116.7	
5	362	170.52	714.4	
6	393	506.51	1,954.6	
7	485	14.00	43.8	
8	504	12.93	38.9	
9	519	21.73	63.5	
10	10,380	75.00	10.9	Upper Marker
11	12,998	0.00	0.0	

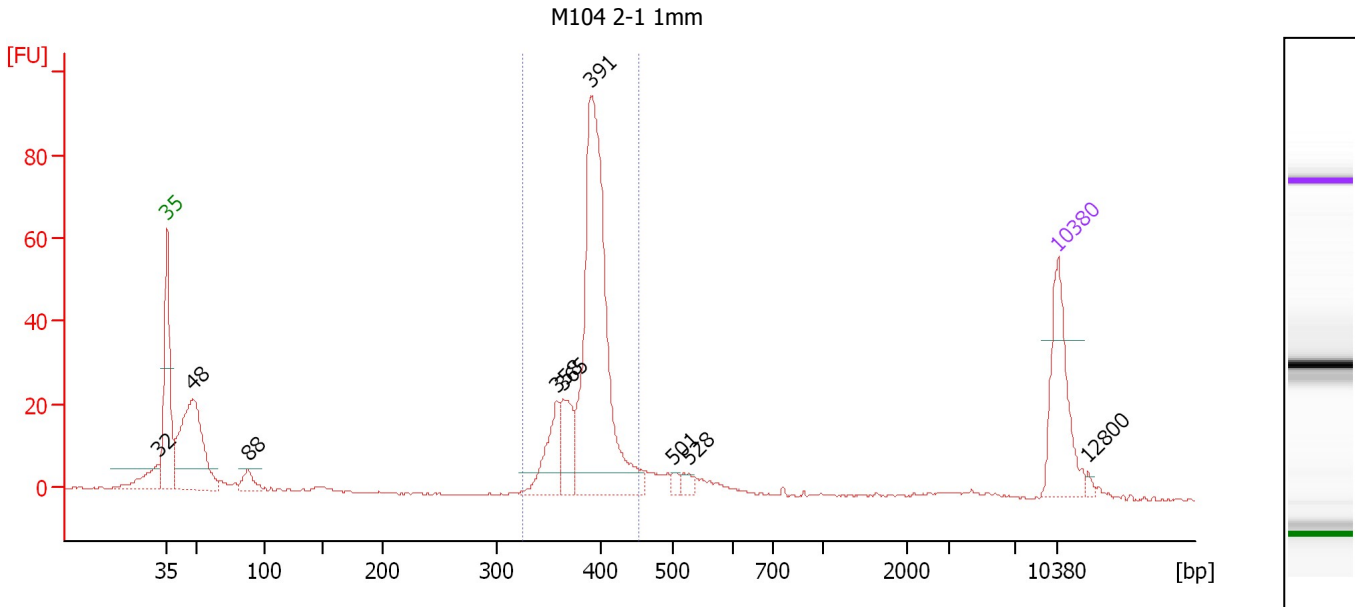
**Region table for sample 9 : Kit 2-1 Endo2**

From [bp]	To [bp]	Average Size [bp]	Molarity [pmol/l]	Conc. [pg/μl]	Corr. Area	% of Total	Size distribution in CV [%]	Color
318	472	393	2,589.2	668.93	563.4	65	6.4	Blue

Assay Class: High Sensitivity DNA Assay  
 Data Path: C:\...ents and Settings\Bioanalyzer\2012-11-20\2012-11-20\_001.xad

Created: 11/20/2012 12:04:14 PM  
 Modified: 11/20/2012 12:47:33 PM

**Electropherogram Summary Continued ...**



**Overall Results for sample 10 : M104 2-1 1mm**

Number of peaks found: 9                      Corr. Area 1: 320.1  
 Noise: 0.2

**Peak table for sample 10 : M104 2-1 1mm**

Peak	Size [bp]	Conc. [pg/μl]	Molarity [pmol/l]	Observations
1	32	0.00	0.0	
2	35	125.00	5,411.3	Lower Marker
3	48	213.69	6,706.4	
4	88	20.85	359.1	
5	358	58.40	247.1	
6	365	49.11	204.1	
7	391	365.73	1,417.8	
8	501	5.89	17.8	
9	528	8.11	23.3	
10	10,380	75.00	10.9	Upper Marker
11	12,800	0.00	0.0	

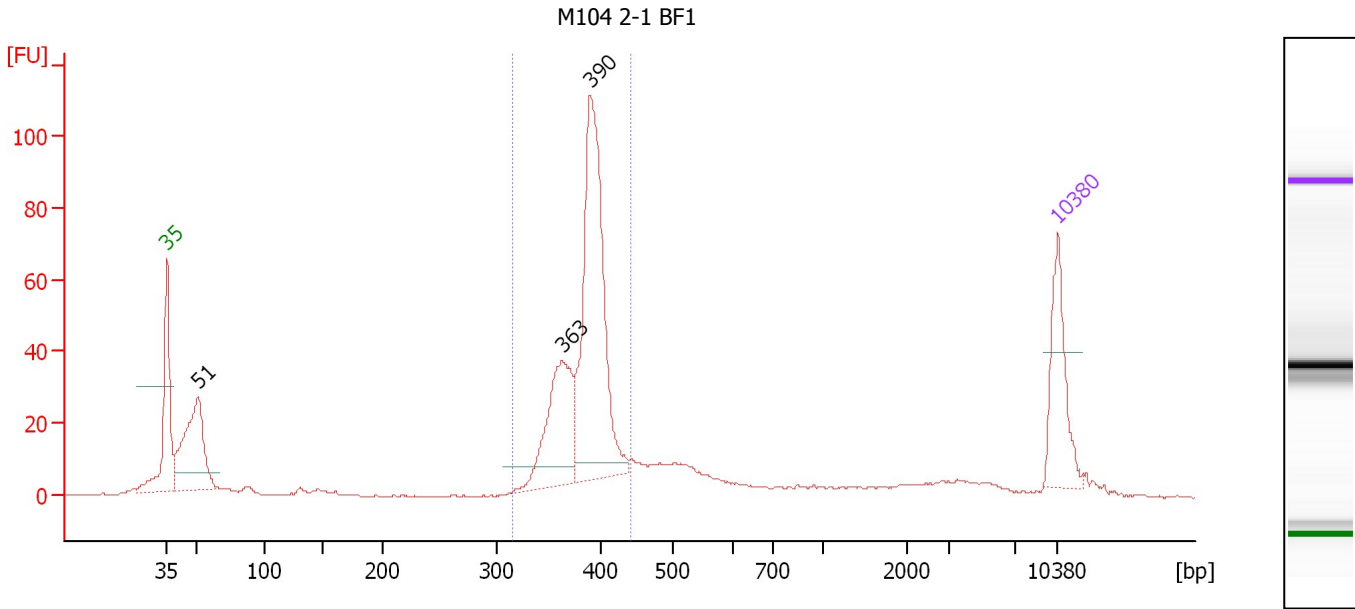
**Region table for sample 10 : M104 2-1 1mm**

From [bp]	To [bp]	Average Size [bp]	Molarity [pmol/l]	Conc. [pg/μl]	Corr. Area	% of Total	Size distribution in CV [%]	Color
324	452	390	1,779.5	457.38	320.1	62	5.4	Blue

Assay Class: High Sensitivity DNA Assay  
 Data Path: C:\...ents and Settings\Bioanalyzer\2012-11-20\2012-11-20\_001.xad

Created: 11/20/2012 12:04:14 PM  
 Modified: 11/20/2012 12:47:33 PM

**Electropherogram Summary Continued ...**



**Overall Results for sample 11 : M104 2-1 BF1**

Number of peaks found: 3                      Corr. Area 1: 421.3  
 Noise: 0.1

**Peak table for sample 11 : M104 2-1 BF1**

Peak	Size [bp]	Conc. [pg/μl]	Molarity [pmol/l]	Observations
1	35	125.00	5,411.3	Lower Marker
2	51	198.64	5,863.0	
3	363	156.27	652.2	
4	390	354.72	1,377.9	
5	10,380	75.00	10.9	Upper Marker

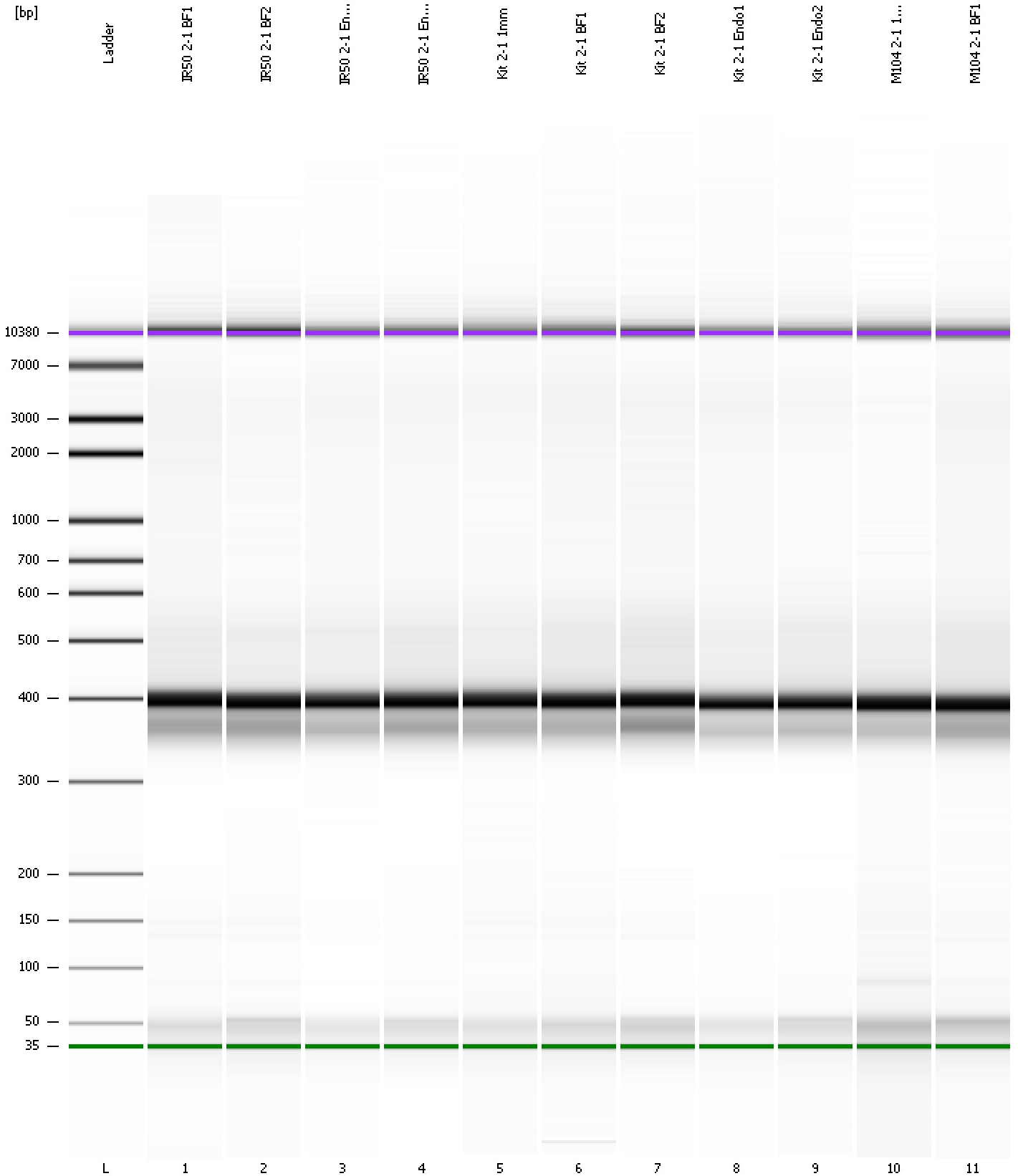
**Region table for sample 11 : M104 2-1 BF1**

From [bp]	To [bp]	Average Size [bp]	Molarity [pmol/l]	Conc. [pg/μl]	Corr. Area	% of Total	Size distribution in CV [%]	Color
315	443	385	2,271.1	575.81	421.3	56	5.8	Blue

Assay Class: High Sensitivity DNA Assay  
Data Path: C:\...ents and Settings\Bioanalyzer\2012-11-20\2012-11-20\_001.xad

Created: 11/20/2012 12:04:14 PM  
Modified: 11/20/2012 12:47:33 PM

**Gel Image**





Assay Class: High Sensitivity DNA Assay  
 Data Path: C:\...ents and Settings\Bioanalyzer\2012-11-20\2012-11-20\_001.xad

Created: 11/20/2012 12:04:14 PM  
 Modified: 11/20/2012 12:47:33 PM

**Run Logbook**

Description	Number	Source	Category	Sub Category	Time	Time Zone	User	Host
Run ended on port 1 (Number of wells acquired: 12)		Instrument	Run		11/20/2012 12:45:34 PM	(GMT --08:00) Pacific Standard Time	UC Davis	D8XSMGH1
Run started on port 1 (File: C:\Documents and Settings\Bioanalyzer\2012-11-20\2012-11-20_001.xad)		Instrument	Run		11/20/2012 12:04:20 PM	(GMT --08:00) Pacific Standard Time	UC Davis	D8XSMGH1
Product Number : G2938B		Instrument	Run		11/20/2012 12:04:20 PM	(GMT --08:00) Pacific Standard Time	UC Davis	D8XSMGH1
Name :		Instrument	Run		11/20/2012 12:04:20 PM	(GMT --08:00) Pacific Standard Time	UC Davis	D8XSMGH1
Vendor : Agilent Technologies		Instrument	Run		11/20/2012 12:04:20 PM	(GMT --08:00) Pacific Standard Time	UC Davis	D8XSMGH1
Serial# : DE13701086		Instrument	Run		11/20/2012 12:04:20 PM	(GMT --08:00) Pacific Standard Time	UC Davis	D8XSMGH1
Firmware : C.01.069		Instrument	Run		11/20/2012 12:04:20 PM	(GMT --08:00) Pacific Standard Time	UC Davis	D8XSMGH1
Cartridge : Electrode		Instrument	Run		11/20/2012 12:04:20 PM	(GMT --08:00) Pacific Standard Time	UC Davis	D8XSMGH1