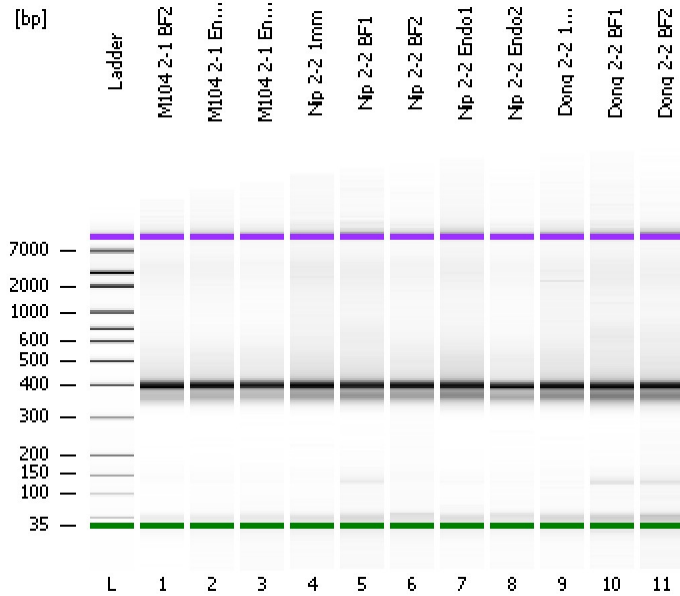


Assay Class: High Sensitivity DNA Assay  
Data Path: C:\...ents and Settings\Bioanalyzer\2012-11-20\2012-11-20\_002.xad

Created: 11/20/2012 12:58:24 PM  
Modified: 11/20/2012 1:55:33 PM

**Electrophoresis File Run Summary**



Instrument Information:

Instrument Name: DE13701086      Firmware: C.01.069  
Serial#: DE13701086      Type: G2938B

Assay Information:

Assay Origin Path: C:\Program Files\Agilent\2100 bioanalyzer\2100 expert\assays\dsDNA\High Sensitivity DNA.xsy  
Assay Class: High Sensitivity DNA Assay  
Version: 1.03  
Assay Comments: Copyright © 2003-2010 Agilent Technologies

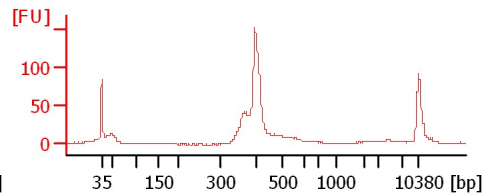
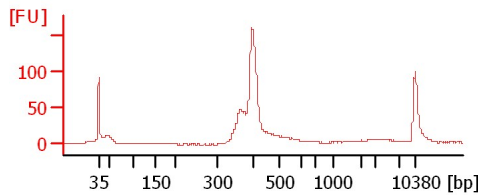
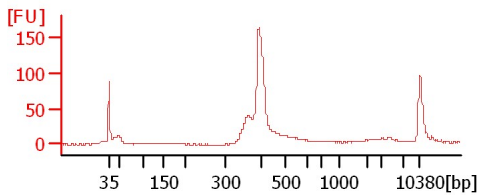
Chip Information:

Chip Lot #:   
Reagent Kit Lot #:   
Chip Comments:

**M104 2-1 BF2**

**M104 2-1 Endo1**

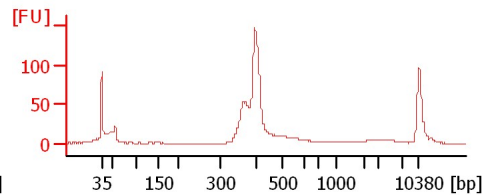
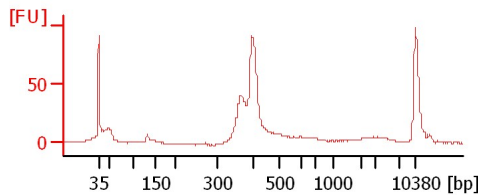
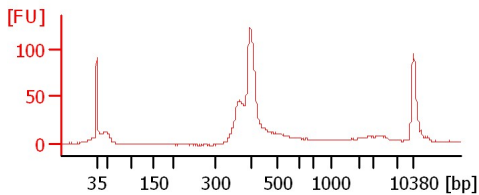
**M104 2-1 Endo2**



**Nip 2-2 1mm**

**Nip 2-2 BF1**

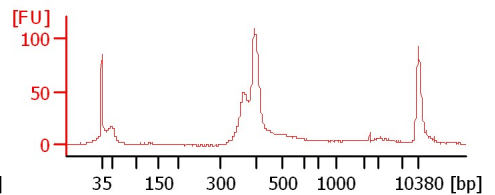
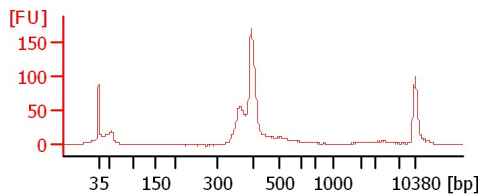
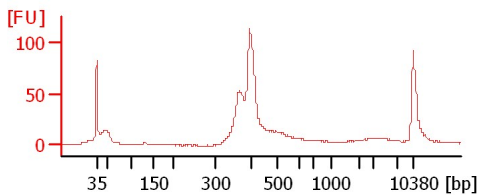
**Nip 2-2 BF2**



**Nip 2-2 Endo1**

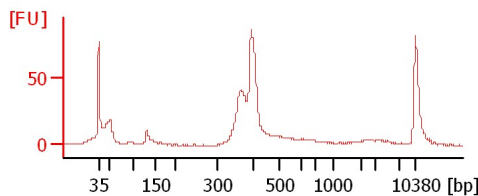
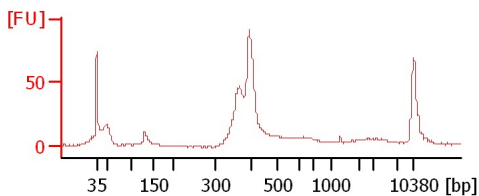
**Nip 2-2 Endo2**

**Dong 2-2 1mm**



**Dong 2-2 BF1**

**Dong 2-2 BF2**



Assay Class: High Sensitivity DNA Assay  
Data Path: C:\...ents and Settings\Bioanalyzer\2012-11-20\2012-11-20\_002.xad

Created: 11/20/2012 12:58:24 PM  
Modified: 11/20/2012 1:55:33 PM

**Electrophoresis File Run Summary (Chip Summary)**

Sample Name	Sample Comment	Rest. Digest	Status	Observation	Result Label	Result Color
M104 2-1 BF2		<input type="checkbox"/>	✓			
M104 2-1 Endo1		<input type="checkbox"/>	✓			
M104 2-1 Endo2		<input type="checkbox"/>	✓			
Nip 2-2 1mm		<input type="checkbox"/>	✓			
Nip 2-2 BF1		<input type="checkbox"/>	✓			
Nip 2-2 BF2		<input type="checkbox"/>	✓			
Nip 2-2 Endo1		<input type="checkbox"/>	✓			
Nip 2-2 Endo2		<input type="checkbox"/>	✓			
Dong 2-2 1mm		<input type="checkbox"/>	✓			
Dong 2-2 BF1		<input type="checkbox"/>	✓			
Dong 2-2 BF2		<input type="checkbox"/>	✓			
Ladder		<input type="checkbox"/>	✓			

**Chip Lot #****Reagent Kit Lot #****Chip Comments :**

Assay Class: High Sensitivity DNA Assay  
Data Path: C:\...ents and Settings\Bioanalyzer\2012-11-20\2012-11-20\_002.xad

Created: 11/20/2012 12:58:24 PM  
Modified: 11/20/2012 1:55:33 PM

**Electrophoresis Assay Details**

**General Analysis Settings**

Number of Available Sample and Ladder Wells (Max.) : 12  
Minimum Visible Range [s] : 32  
Maximum Visible Range [s] : 138  
Start Analysis Time Range [s] : 33  
End Analysis Time Range [s] : 137.5  
Ladder Concentration [pg/μl] : 1950  
Uses Standard Area for Ladder Fragments  
Lower Marker Concentration [pg/μl] : 125  
Upper Marker Concentration [pg/μl] : 75  
Used Upper Marker for Quantitation  
Standard Curve Fit is Point to Point  
Show Data Aligned to Lower and Upper Marker

**Integrator Settings**

Integration Start Time [s] : 33.05  
Integration End Time [s] : 137  
Slope Threshold : 0.8  
Height Threshold [FU] : 5  
Area Threshold : 0.1  
Width Threshold [s] : 0.6  
Baseline Plateau [s] : 0.5

**Filter Settings**

Filter Width [s] : 0.5  
Polynomial Order : 4

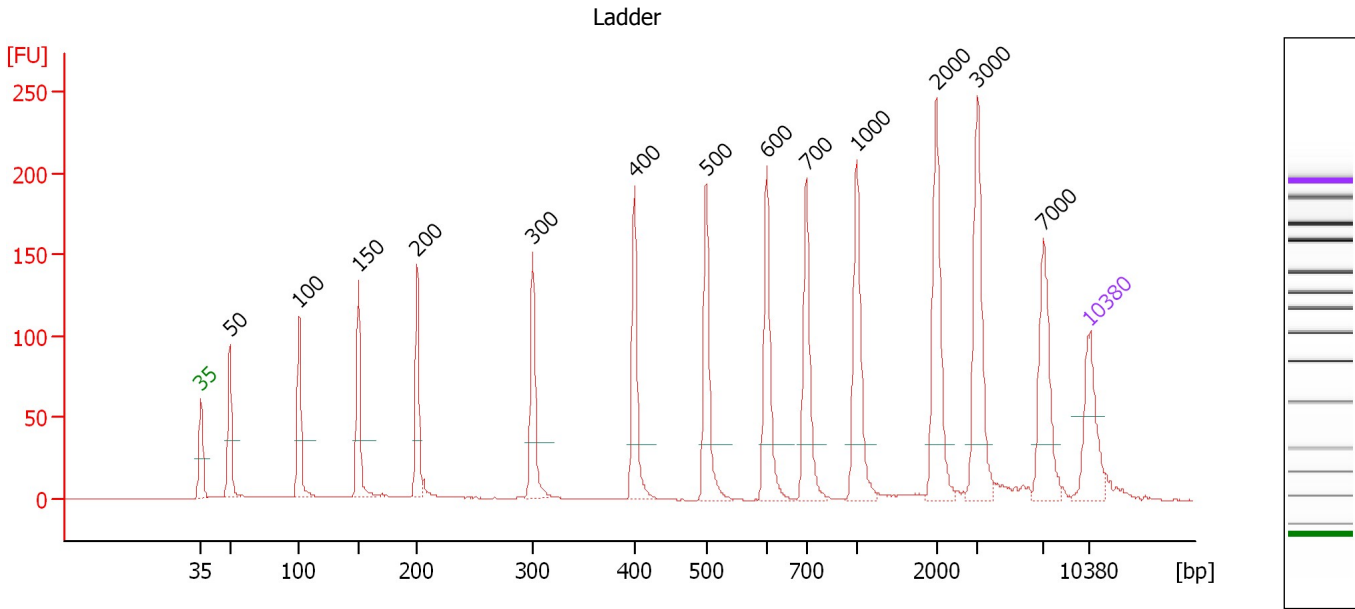
**Ladder**

Ladder Peak	Size	Area
1	35	160
2	50	210
3	100	208
4	150	221
5	200	242
6	300	270
7	400	305
8	500	306
9	600	336
10	700	321
11	1000	366
12	2000	413
13	3000	411
14	7000	400
15	10380	214

Assay Class: High Sensitivity DNA Assay  
 Data Path: C:\...ents and Settings\Bioanalyzer\2012-11-20\2012-11-20\_002.xad

Created: 11/20/2012 12:58:24 PM  
 Modified: 11/20/2012 1:55:33 PM

**Electropherogram Summary**



**Overall Results for Ladder**

Noise: 0.1

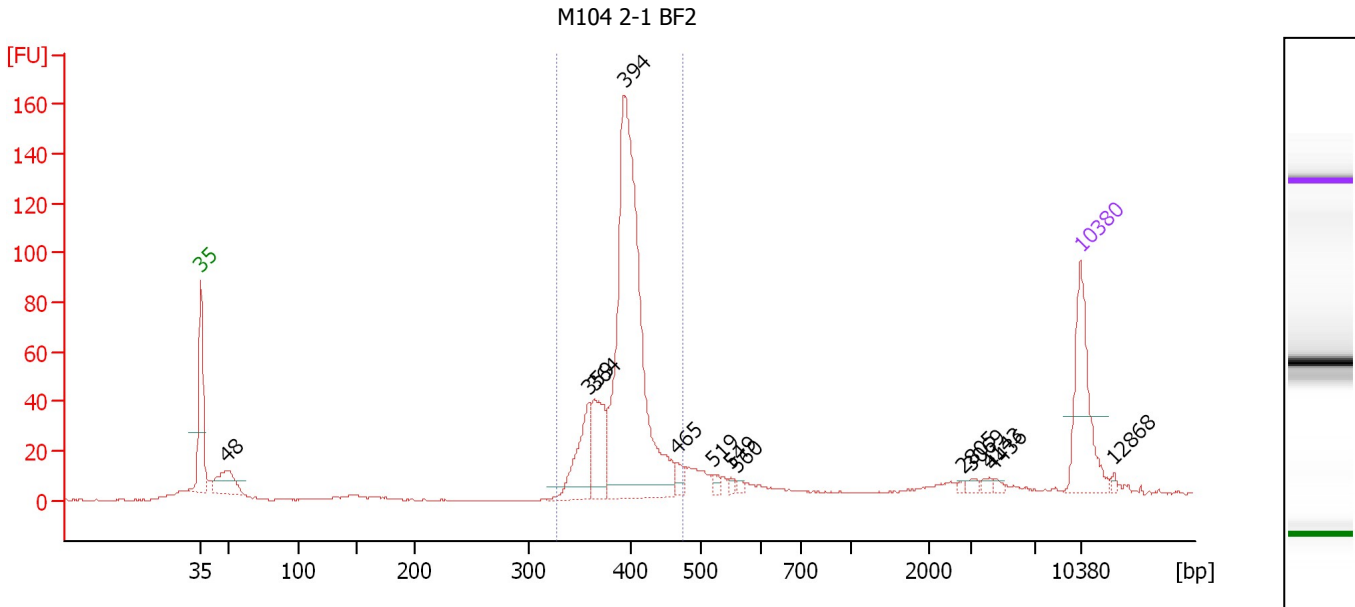
**Peak table for Ladder**

Peak	Size [bp]	Conc. [pg/μl]	Molarity [pmol/l]	Observations
1	35	125.00	5,411.3	Lower Marker
2	50	150.00	4,545.5	Ladder Peak
3	100	150.00	2,272.7	Ladder Peak
4	150	150.00	1,515.2	Ladder Peak
5	200	150.00	1,136.4	Ladder Peak
6	300	150.00	757.6	Ladder Peak
7	400	150.00	568.2	Ladder Peak
8	500	150.00	454.5	Ladder Peak
9	600	150.00	378.8	Ladder Peak
10	700	150.00	324.7	Ladder Peak
11	1,000	150.00	227.3	Ladder Peak
12	2,000	150.00	113.6	Ladder Peak
13	3,000	150.00	75.8	Ladder Peak
14	7,000	150.00	32.5	Ladder Peak
15	10,380	75.00	10.9	Upper Marker

Assay Class: High Sensitivity DNA Assay  
 Data Path: C:\...ents and Settings\Bioanalyzer\2012-11-20\2012-11-20\_002.xad

Created: 11/20/2012 12:58:24 PM  
 Modified: 11/20/2012 1:55:33 PM

**Electropherogram Summary Continued ...**



**Overall Results for sample 1 : M104 2-1 BF2**

Number of peaks found: 13      Corr. Area 1: 624.4  
 Noise: 0.2

**Peak table for sample 1 : M104 2-1 BF2**

Peak	Size [bp]	Conc. [pg/μl]	Molarity [pmol/l]	Observations
1	35	125.00	5,411.3	Lower Marker
2	48	55.37	1,741.5	
3	359	70.52	297.6	
4	364	71.18	296.1	
5	394	471.70	1,814.7	
6	465	10.96	35.7	
7	519	6.13	17.9	
8	549	3.82	10.6	
9	560	3.83	10.3	
10	2,805	2.15	1.2	
11	3,069	4.13	2.0	
12	4,143	4.05	1.5	
13	4,436	3.26	1.1	
14	10,380	75.00	10.9	Upper Marker
15	12,868	0.00	0.0	

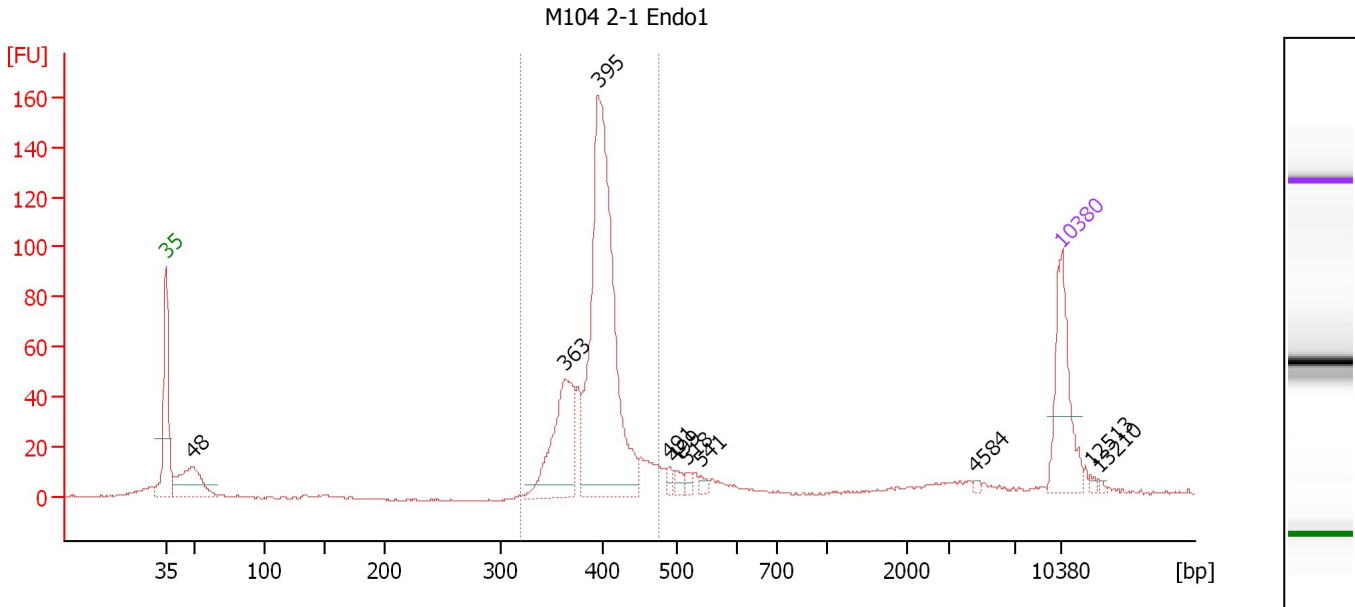
**Region table for sample 1 : M104 2-1 BF2**

From [bp]	To [bp]	Average Size [bp]	Molarity [pmol/l]	Conc. [pg/μl]	Corr. Area	% of Total	Size distribution in CV [%]	Color
326	474	396	2,357.0	613.36	624.4	74	6.5	Blue

Assay Class: High Sensitivity DNA Assay  
 Data Path: C:\...ents and Settings\Bioanalyzer\2012-11-20\2012-11-20\_002.xad

Created: 11/20/2012 12:58:24 PM  
 Modified: 11/20/2012 1:55:33 PM

**Electropherogram Summary Continued ...**



**Overall Results for sample 2 : M104 2-1 Endo1**

Number of peaks found: 10      Corr. Area 1: 629.0  
 Noise: 0.3

**Peak table for sample 2 : M104 2-1 Endo1**

Peak	Size [bp]	Conc. [pg/μl]	Molarity [pmol/l]	Observations
1	35	125.00	5,411.3	Lower Marker
2	48	93.31	2,934.3	
3	363	135.85	566.7	
4	395	429.98	1,649.0	
5	491	7.16	22.1	
6	499	8.58	26.0	
7	518	6.06	17.7	
8	541	5.49	15.4	
9	4,584	2.17	0.7	
10	10,380	75.00	10.9	Upper Marker
11	12,513	0.00	0.0	
12	13,210	0.00	0.0	

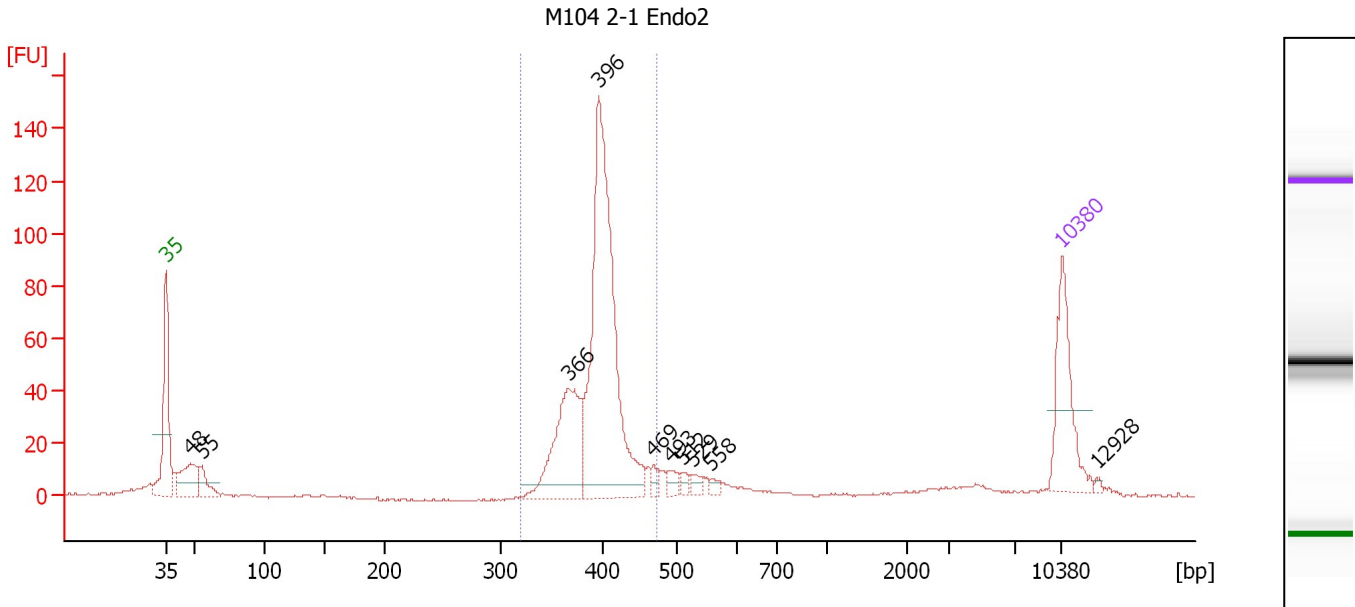
**Region table for sample 2 : M104 2-1 Endo1**

From [bp]	To [bp]	Average Size [bp]	Molarity [pmol/l]	Conc. [pg/μl]	Corr. Area	% of Total	Size distribution in CV [%]	Color
319	476	395	2,328.0	605.33	629.0	75	6.6	Blue

Assay Class: High Sensitivity DNA Assay  
 Data Path: C:\...ents and Settings\Bioanalyzer\2012-11-20\2012-11-20\_002.xad

Created: 11/20/2012 12:58:24 PM  
 Modified: 11/20/2012 1:55:33 PM

**Electropherogram Summary Continued ...**



**Overall Results for sample 3 : M104 2-1 Endo2**

Number of peaks found: 10      Corr. Area 1: 543.9  
 Noise: 0.4

**Peak table for sample 3 : M104 2-1 Endo2**

Peak	Size [bp]	Conc. [pg/μl]	Molarity [pmol/l]	Observations
1	35	125.00	5,411.3	Lower Marker
2	48	67.70	2,157.3	
3	55	29.63	821.0	
4	366	148.22	613.7	
5	396	409.64	1,568.8	
6	469	8.72	28.2	
7	493	11.56	35.5	
8	512	6.48	19.2	
9	529	9.25	26.5	
10	558	6.08	16.5	
11	10,380	75.00	10.9	Upper Marker
12	12,928	0.00	0.0	

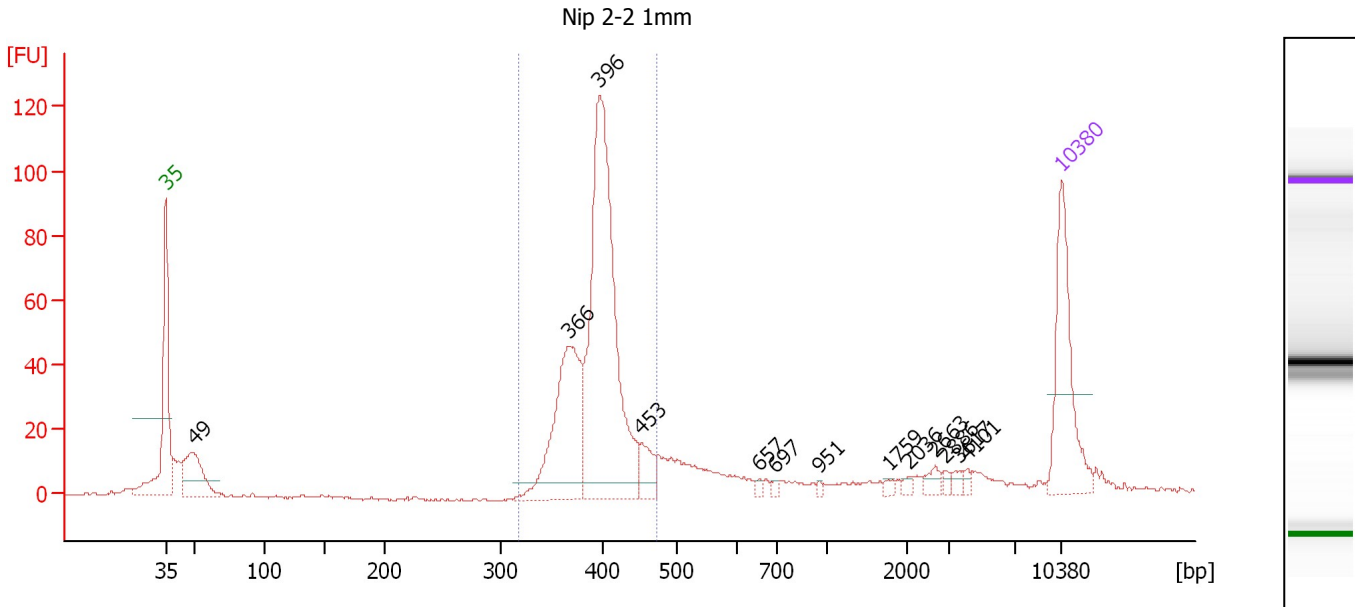
**Region table for sample 3 : M104 2-1 Endo2**

From [bp]	To [bp]	Average Size [bp]	Molarity [pmol/l]	Conc. [pg/μl]	Corr. Area	% of Total	Size distribution in CV [%]	Color
320	474	396	2,115.4	550.86	543.9	76	6.3	Blue

Assay Class: High Sensitivity DNA Assay  
 Data Path: C:\...ents and Settings\Bioanalyzer\2012-11-20\2012-11-20\_002.xad

Created: 11/20/2012 12:58:24 PM  
 Modified: 11/20/2012 1:55:33 PM

**Electropherogram Summary Continued ...**



**Overall Results for sample 4 : Nip 2-2 1mm**

Number of peaks found: 13                      Corr. Area 1: 539.1  
 Noise: 0.3

**Peak table for sample 4 : Nip 2-2 1mm**

Peak	Size [bp]	Conc. [pg/μl]	Molarity [pmol/l]	Observations
1	35	125.00	5,411.3	Lower Marker
2	49	71.72	2,204.0	
3	366	154.23	638.7	
4	396	330.69	1,264.7	
5	453	22.27	74.5	
6	657	3.48	8.0	
7	697	2.77	6.0	
8	951	2.15	3.4	
9	1,759	3.12	2.7	
10	2,036	3.17	2.4	
11	2,663	7.15	4.1	
12	2,886	3.04	1.6	
13	3,617	3.87	1.6	
14	4,101	3.10	1.1	
15	10,380	75.00	10.9	Upper Marker

**Region table for sample 4 : Nip 2-2 1mm**

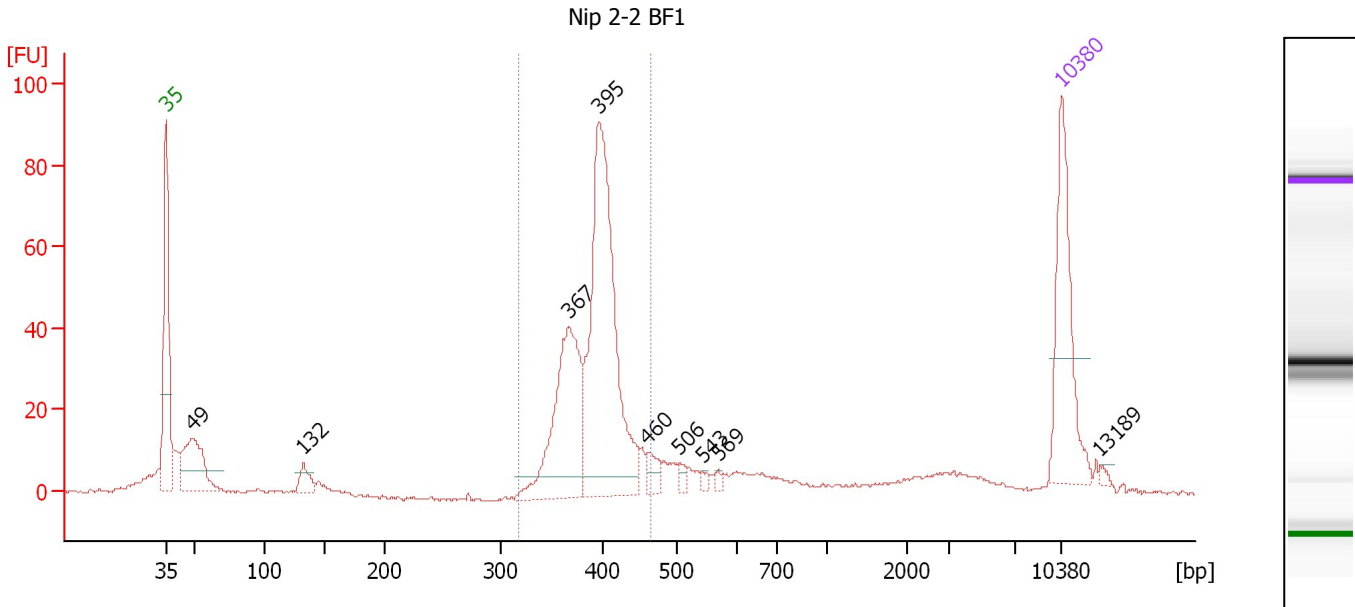
From [bp]	To [bp]	Average Size [bp]	Molarity [pmol/l]	Conc. [pg/μl]	Corr. Area	% of Total	Size distribution in CV [%]	Color
317	475	395	1,861.2	483.76	539.1	68	6.8	Blue



Assay Class: High Sensitivity DNA Assay  
 Data Path: C:\...ents and Settings\Bioanalyzer\2012-11-20\2012-11-20\_002.xad

Created: 11/20/2012 12:58:24 PM  
 Modified: 11/20/2012 1:55:33 PM

**Electropherogram Summary Continued ...**



**Overall Results for sample 5 : Nip 2-2 BF1**

Number of peaks found: 9                      Corr. Area 1: 411.0  
 Noise: 0.5

**Peak table for sample 5 : Nip 2-2 BF1**

Peak	Size [bp]	Conc. [pg/μl]	Molarity [pmol/l]	Observations
1	35	125.00	5,411.3	Lower Marker
2	49	78.39	2,444.5	
3	132	17.10	196.0	
4	367	141.13	582.7	
5	395	257.80	987.8	
6	460	13.24	43.6	
7	506	5.47	16.4	
8	543	3.53	9.8	
9	569	2.83	7.5	
10	10,380	75.00	10.9	Upper Marker
11	13,189	0.00	0.0	

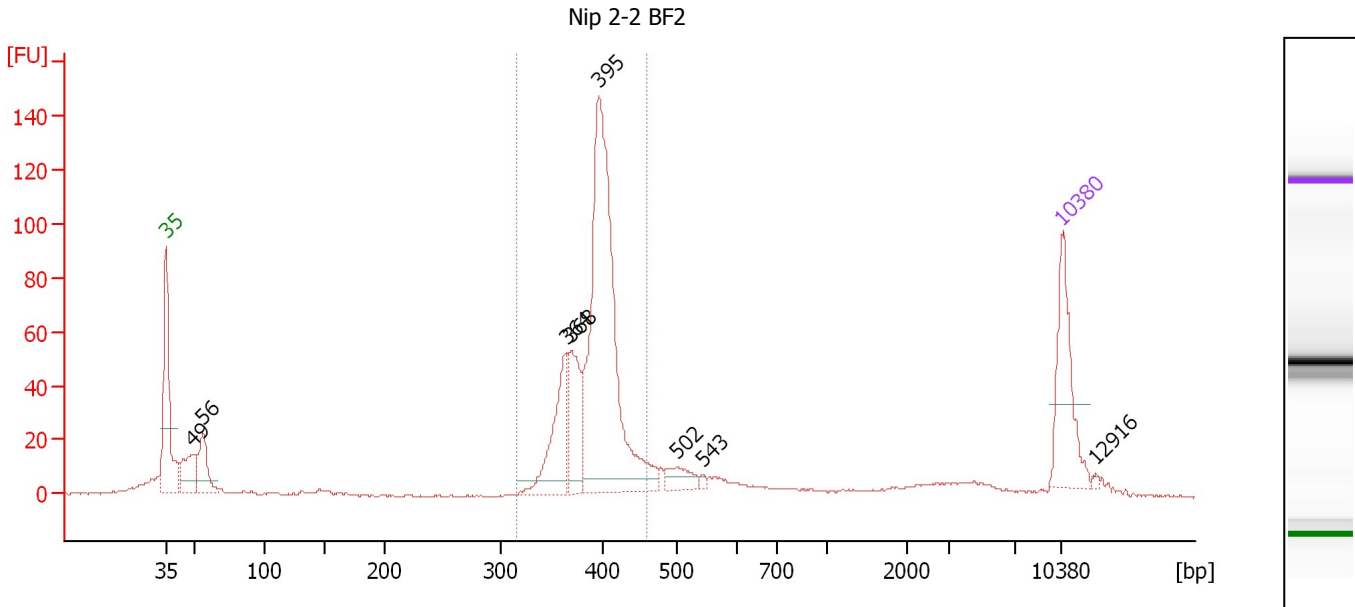
**Region table for sample 5 : Nip 2-2 BF1**

From [bp]	To [bp]	Average Size [bp]	Molarity [pmol/l]	Conc. [pg/μl]	Corr. Area	% of Total	Size distribution in CV [%]	Color
317	465	393	1,526.7	394.07	411.0	62	6.6	Blue

Assay Class: High Sensitivity DNA Assay  
 Data Path: C:\...ents and Settings\Bioanalyzer\2012-11-20\2012-11-20\_002.xad

Created: 11/20/2012 12:58:24 PM  
 Modified: 11/20/2012 1:55:33 PM

**Electropherogram Summary Continued ...**



**Overall Results for sample 6 : Nip 2-2 BF2**

Number of peaks found: 8                      Corr. Area 1: 596.0  
 Noise: 0.4

**Peak table for sample 6 : Nip 2-2 BF2**

Peak	Size [bp]	Conc. [pg/μl]	Molarity [pmol/l]	Observations
1	35	125.00	5,411.3	Lower Marker
2	49	61.37	1,907.4	
3	56	58.32	1,581.4	
4	364	98.16	409.1	
5	368	76.17	313.5	
6	395	418.36	1,603.8	
7	502	23.00	69.4	
8	543	3.41	9.5	
9	10,380	75.00	10.9	Upper Marker
10	12,916	0.00	0.0	

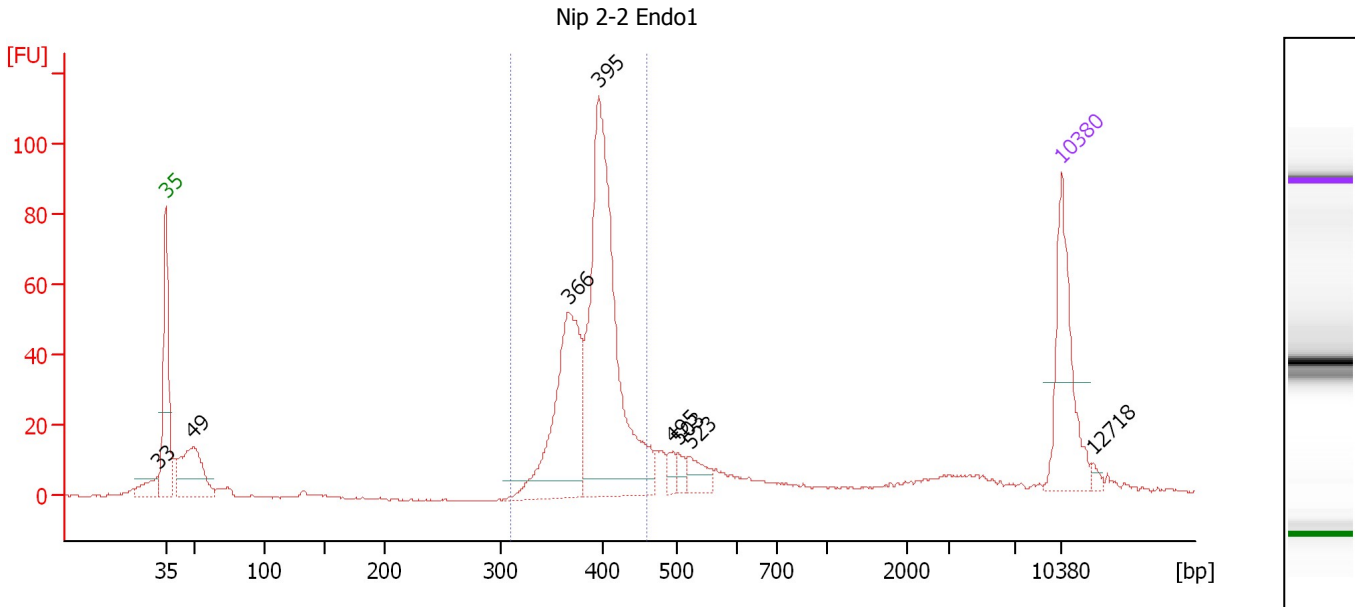
**Region table for sample 6 : Nip 2-2 BF2**

From [bp]	To [bp]	Average Size [bp]	Molarity [pmol/l]	Conc. [pg/μl]	Corr. Area	% of Total	Size distribution in CV [%]	Color
315	461	392	2,307.5	594.82	596.0	66	6.2	Blue

Assay Class: High Sensitivity DNA Assay  
 Data Path: C:\...ents and Settings\Bioanalyzer\2012-11-20\2012-11-20\_002.xad

Created: 11/20/2012 12:58:24 PM  
 Modified: 11/20/2012 1:55:33 PM

**Electropherogram Summary Continued ...**



**Overall Results for sample 7 : Nip 2-2 Endo1**

Number of peaks found: 8                      Corr. Area 1: 515.8  
 Noise: 0.2

**Peak table for sample 7 : Nip 2-2 Endo1**

Peak	Size [bp]	Conc. [pg/μl]	Molarity [pmol/l]	Observations
1	33	0.00	0.0	
2	35	125.00	5,411.3	Lower Marker
3	49	94.23	2,903.4	
4	366	184.45	762.8	
5	395	344.87	1,321.5	
6	495	10.57	32.3	
7	503	9.60	28.9	
8	523	19.74	57.2	
9	10,380	75.00	10.9	Upper Marker
10	12,718	0.00	0.0	

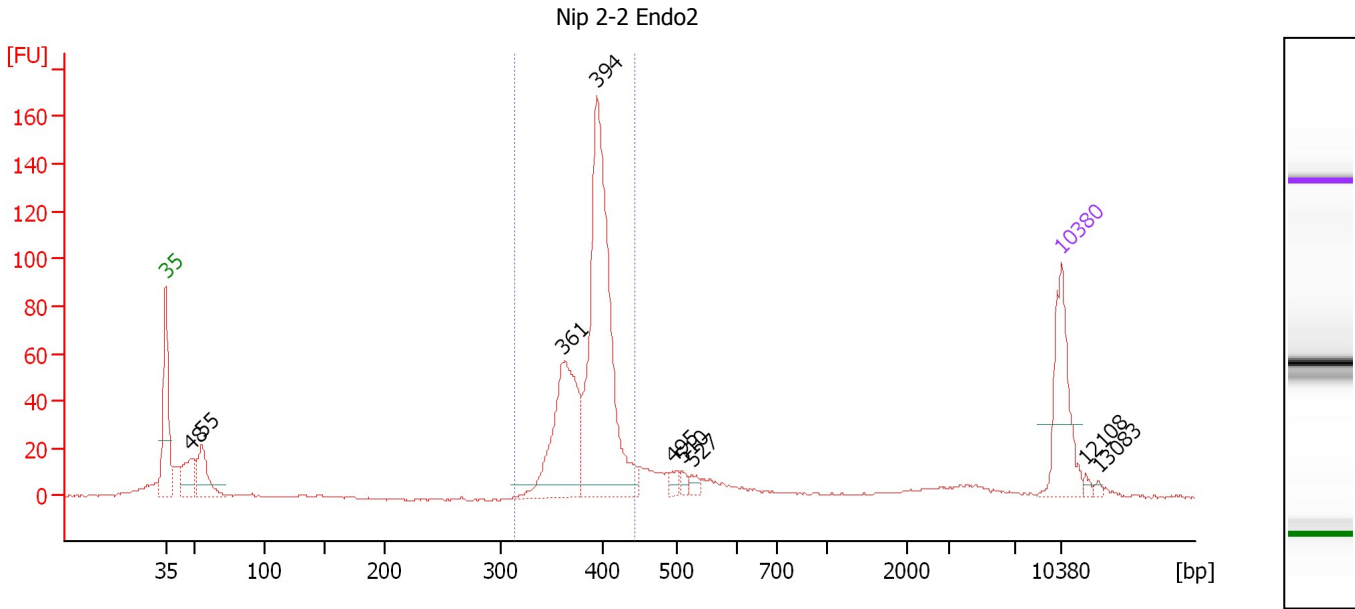
**Region table for sample 7 : Nip 2-2 Endo1**

From [bp]	To [bp]	Average Size [bp]	Molarity [pmol/l]	Conc. [pg/μl]	Corr. Area	% of Total	Size distribution in CV [%]	Color
310	459	391	1,984.9	510.13	515.8	63	6.6	Blue

Assay Class: High Sensitivity DNA Assay  
 Data Path: C:\...ents and Settings\Bioanalyzer\2012-11-20\2012-11-20\_002.xad

Created: 11/20/2012 12:58:24 PM  
 Modified: 11/20/2012 1:55:33 PM

**Electropherogram Summary Continued ...**



**Overall Results for sample 8 : Nip 2-2 Endo2**

Number of peaks found: 9                      Corr. Area 1: 584.8  
 Noise: 0.4

**Peak table for sample 8 : Nip 2-2 Endo2**

Peak	Size [bp]	Conc. [pg/μl]	Molarity [pmol/l]	Observations
1	35	125.00	5,411.3	Lower Marker
2	48	53.31	1,682.6	
3	55	62.12	1,712.8	
4	361	182.27	764.6	
5	394	380.53	1,463.8	
6	495	9.34	28.6	
7	510	6.50	19.3	
8	527	8.26	23.8	
9	10,380	75.00	10.9	Upper Marker
10	12,108	0.00	0.0	
11	13,083	0.00	0.0	

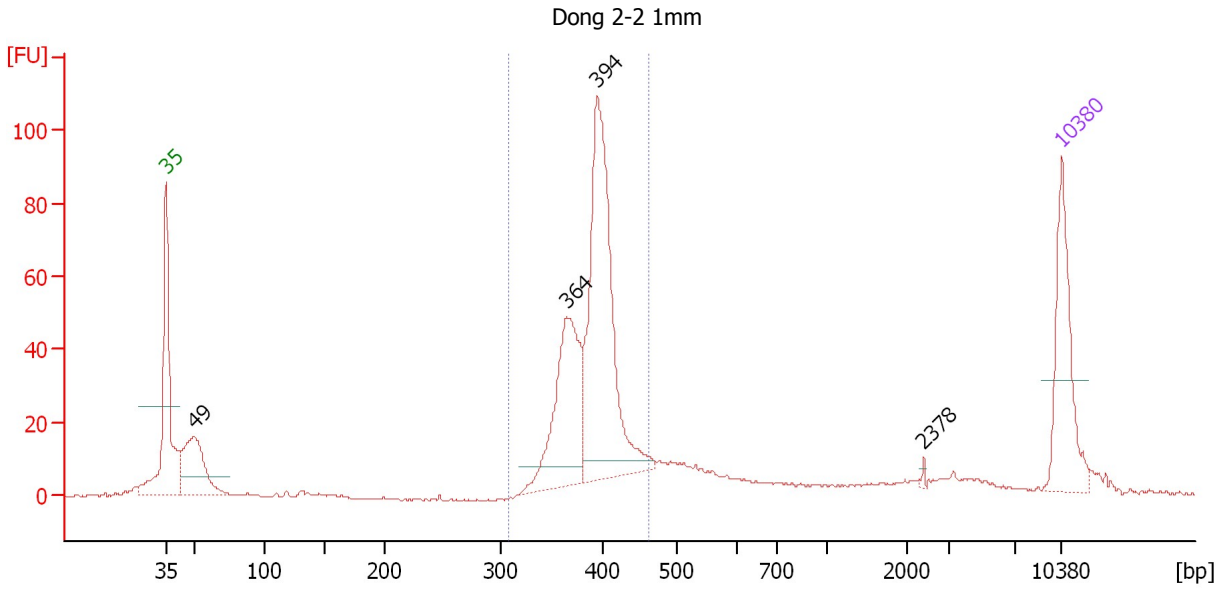
**Region table for sample 8 : Nip 2-2 Endo2**

From [bp]	To [bp]	Average Size [bp]	Molarity [pmol/l]	Conc. [pg/μl]	Corr. Area	% of Total	Size distribution in CV [%]	Color
314	443	388	2,175.1	555.45	584.8	64	5.6	Blue

Assay Class: High Sensitivity DNA Assay  
 Data Path: C:\...ents and Settings\Bioanalyzer\2012-11-20\2012-11-20\_002.xad

Created: 11/20/2012 12:58:24 PM  
 Modified: 11/20/2012 1:55:33 PM

**Electropherogram Summary Continued ...**



**Overall Results for sample 9 : Dong 2-2 1mm**

Number of peaks found: 4                      Corr. Area 1: 482.7  
 Noise: 0.3

**Peak table for sample 9 : Dong 2-2 1mm**

Peak	Size [bp]	Conc. [pg/μl]	Molarity [pmol/l]	Observations
1	35	125.00	5,411.3	Lower Marker
2	49	101.49	3,117.0	
3	364	152.93	635.9	
4	394	285.37	1,098.1	
5	2,378	1.61	1.0	
6	10,380	75.00	10.9	Upper Marker

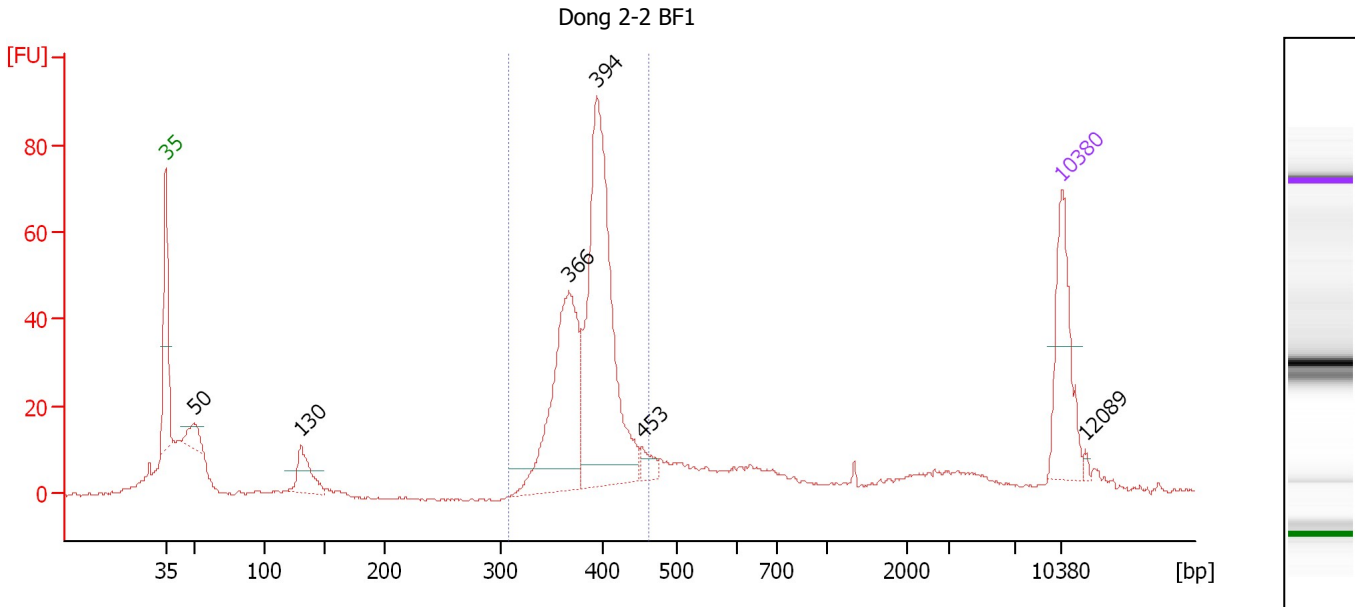
**Region table for sample 9 : Dong 2-2 1mm**

From [bp]	To [bp]	Average Size [bp]	Molarity [pmol/l]	Conc. [pg/μl]	Corr. Area	% of Total	Size distribution in CV [%]	Color
308	464	390	1,925.4	493.97	482.7	63	6.6	Blue

Assay Class: High Sensitivity DNA Assay  
 Data Path: C:\...ents and Settings\Bioanalyzer\2012-11-20\2012-11-20\_002.xad

Created: 11/20/2012 12:58:24 PM  
 Modified: 11/20/2012 1:55:33 PM

**Electropherogram Summary Continued ...**



**Overall Results for sample 10 : Dong 2-2 BF1**

Number of peaks found: 6                      Corr. Area 1: 430.6  
 Noise: 0.3

**Peak table for sample 10 : Dong 2-2 BF1**

Peak	Size [bp]	Conc. [pg/μl]	Molarity [pmol/l]	Observations
1	35	125.00	5,411.3	Lower Marker
2	50	27.00	822.1	
3	130	48.24	561.3	
4	366	213.12	881.3	
5	394	338.00	1,301.0	
6	453	14.33	47.9	
7	10,380	75.00	10.9	Upper Marker
8	12,089	0.00	0.0	

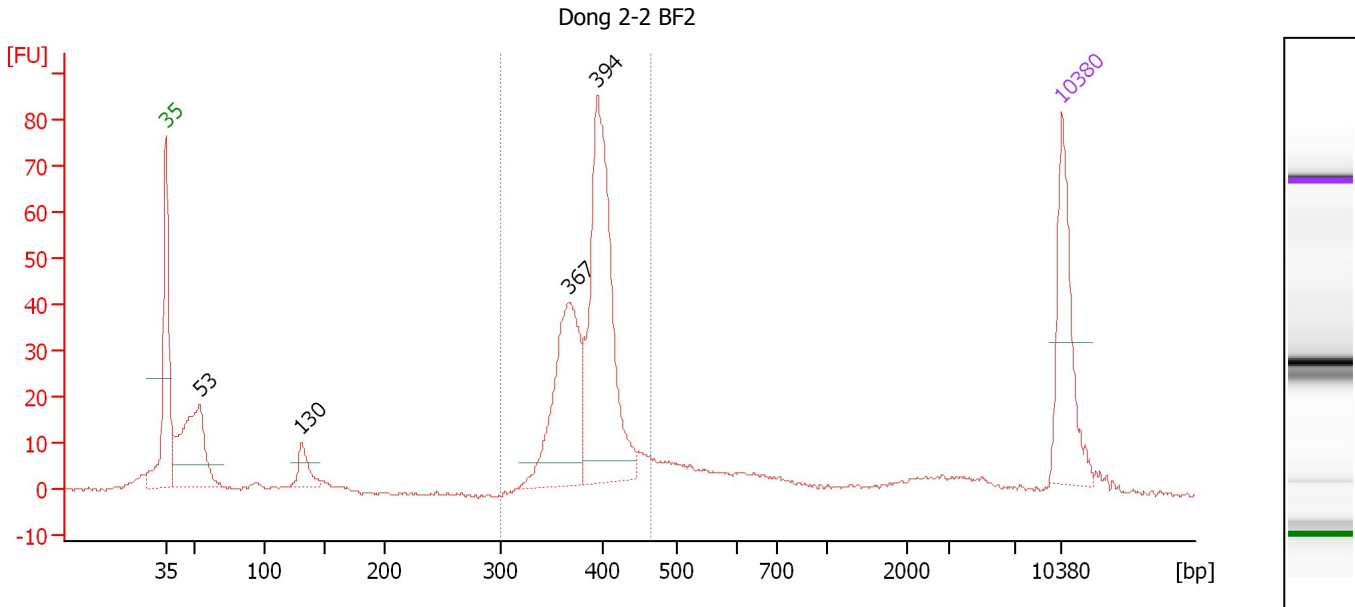
**Region table for sample 10 : Dong 2-2 BF1**

From [bp]	To [bp]	Average Size [bp]	Molarity [pmol/l]	Conc. [pg/μl]	Corr. Area	% of Total	Size distribution in CV [%]	Color
308	463	388	2,305.7	588.09	430.6	58	6.8	Blue

Assay Class: High Sensitivity DNA Assay  
 Data Path: C:\...ents and Settings\Bioanalyzer\2012-11-20\2012-11-20\_002.xad

Created: 11/20/2012 12:58:24 PM  
 Modified: 11/20/2012 1:55:33 PM

**Electropherogram Summary Continued ...**



**Overall Results for sample 11 : Dong 2-2 BF2**

Number of peaks found: 4                      Corr. Area 1: 386.2  
 Noise: 0.4

**Peak table for sample 11 : Dong 2-2 BF2**

Peak	Size [bp]	Conc. [pg/μl]	Molarity [pmol/l]	Observations
1	35	125.00	5,411.3	Lower Marker
2	53	146.79	4,163.2	
3	130	28.16	327.1	
4	367	158.04	653.3	
5	394	255.22	981.3	
6	10,380	75.00	10.9	Upper Marker

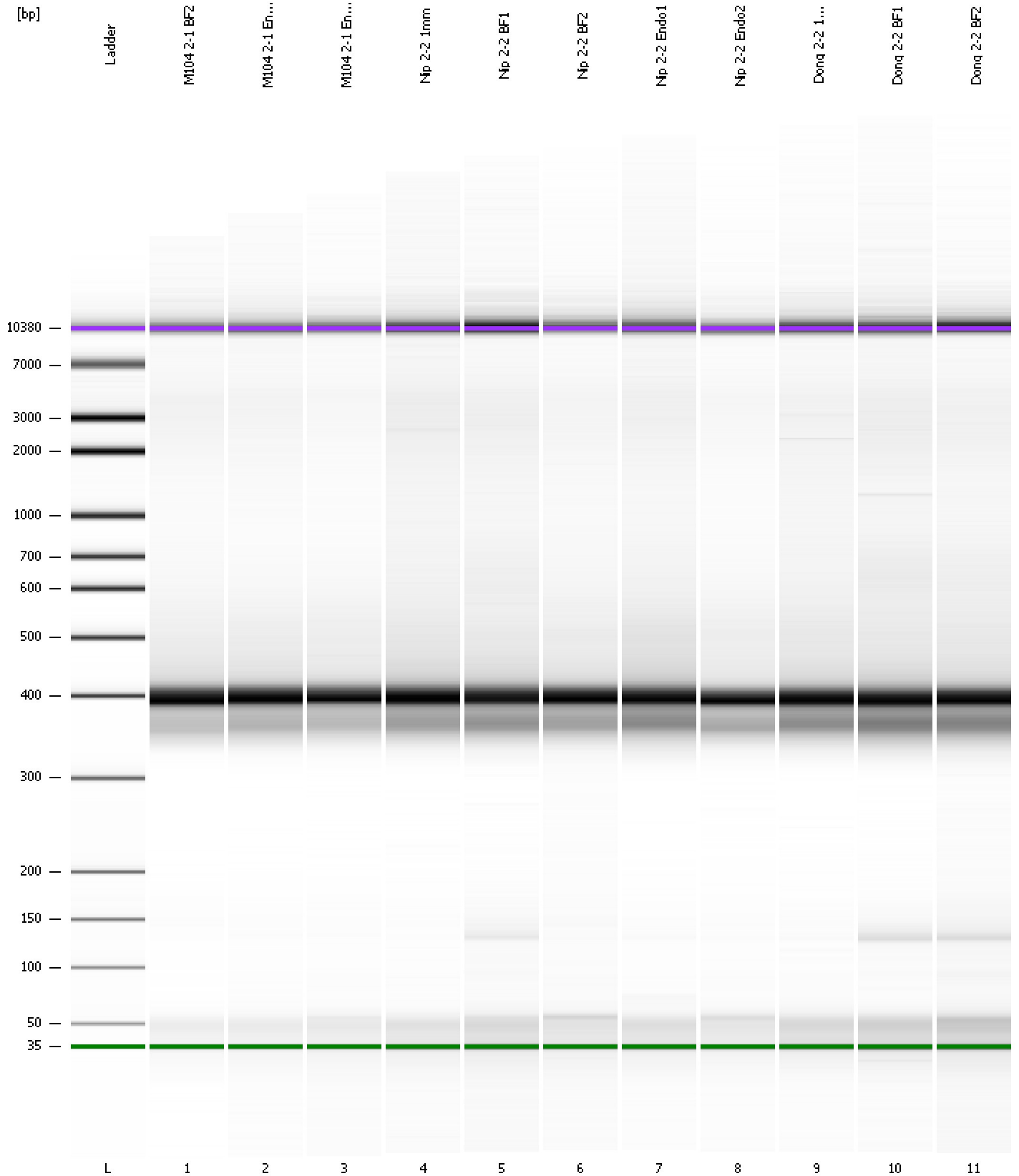
**Region table for sample 11 : Dong 2-2 BF2**

From [bp]	To [bp]	Average Size [bp]	Molarity [pmol/l]	Conc. [pg/μl]	Corr. Area	% of Total	Size distribution in CV [%]	Color
301	464	389	1,789.2	457.21	386.2	58	6.8	Blue

Assay Class: High Sensitivity DNA Assay  
Data Path: C:\...ents and Settings\Bioanalyzer\2012-11-20\2012-11-20\_002.xad

Created: 11/20/2012 12:58:24 PM  
Modified: 11/20/2012 1:55:33 PM

**Gel Image**





Assay Class: High Sensitivity DNA Assay  
 Data Path: C:\...ents and Settings\Bioanalyzer\2012-11-20\2012-11-20\_002.xad

Created: 11/20/2012 12:58:24 PM  
 Modified: 11/20/2012 1:55:33 PM

**Run Logbook**

Description	Number	Source	Category	Sub Category	Time	Time Zone	User	Host
Run ended on port 1 (Number of wells acquired: 12)		Instrument	Run		11/20/2012 1:39:42 PM	(GMT --08:00) Pacific Standard Time	UC Davis	D8XSMGH1
Run started on port 1 (File: C:\Documents and Settings\Bioanalyzer\2012-11-20\2012-11-20_002.xad)		Instrument	Run		11/20/2012 12:58:29 PM	(GMT --08:00) Pacific Standard Time	UC Davis	D8XSMGH1
Product Number : G2938B		Instrument	Run		11/20/2012 12:58:29 PM	(GMT --08:00) Pacific Standard Time	UC Davis	D8XSMGH1
Name :		Instrument	Run		11/20/2012 12:58:29 PM	(GMT --08:00) Pacific Standard Time	UC Davis	D8XSMGH1
Vendor : Agilent Technologies		Instrument	Run		11/20/2012 12:58:29 PM	(GMT --08:00) Pacific Standard Time	UC Davis	D8XSMGH1
Serial# : DE13701086		Instrument	Run		11/20/2012 12:58:29 PM	(GMT --08:00) Pacific Standard Time	UC Davis	D8XSMGH1
Firmware : C.01.069		Instrument	Run		11/20/2012 12:58:29 PM	(GMT --08:00) Pacific Standard Time	UC Davis	D8XSMGH1
Cartridge : Electrode		Instrument	Run		11/20/2012 12:58:29 PM	(GMT --08:00) Pacific Standard Time	UC Davis	D8XSMGH1