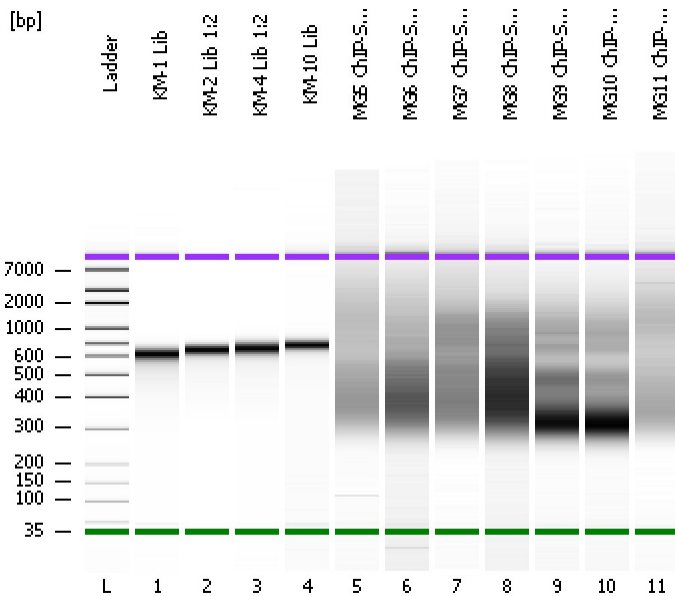


Assay Class: High Sensitivity DNA Assay
Data Path: C:\...ents and Settings\Bioanalyzer\2012-11-20\2012-11-20_003.xad

Created: 11/20/2012 2:46:25 PM
Modified: 11/20/2012 3:33:34 PM

Electrophoresis File Run Summary



Instrument Information:

Instrument Name: DE13701086 Firmware: C.01.069
Serial#: DE13701086 Type: G2938B

Assay Information:

Assay Origin Path: C:\Program Files\Agilent\2100 bioanalyzer\2100 expert\assays\dsDNA\High Sensitivity DNA.xsy
Assay Class: High Sensitivity DNA Assay
Version: 1.03
Assay Comments: Copyright © 2003-2010 Agilent Technologies

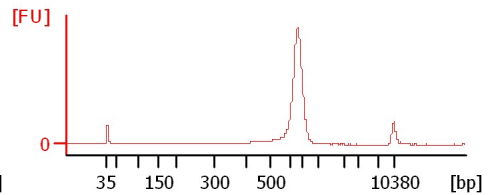
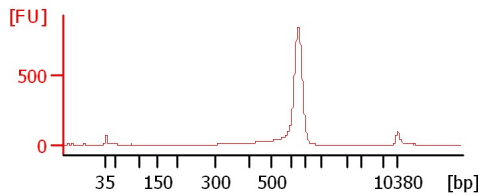
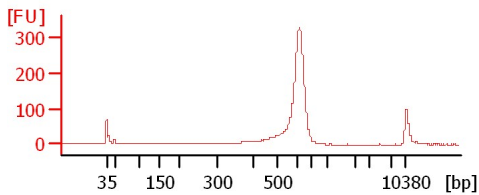
Chip Information:

Chip Lot #:
Reagent Kit Lot #:
Chip Comments:

KM-1 Lib

KM-2 Lib 1:2

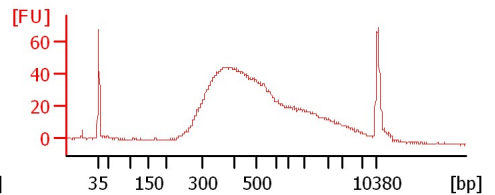
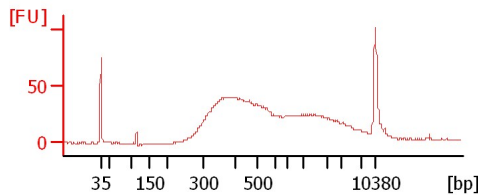
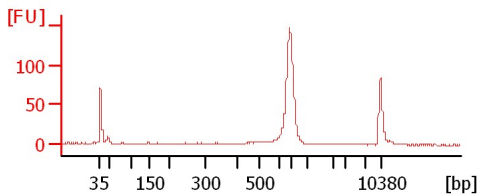
KM-4 Lib 1:2



KM-10 Lib

MG5 ChIP-Seq Lib

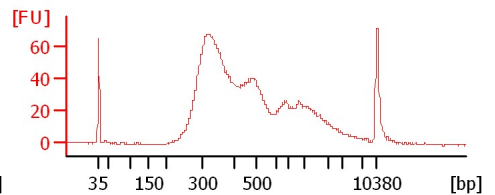
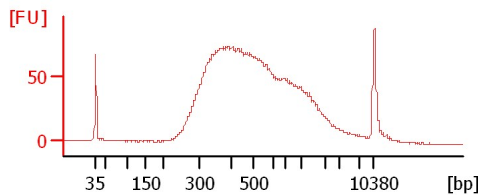
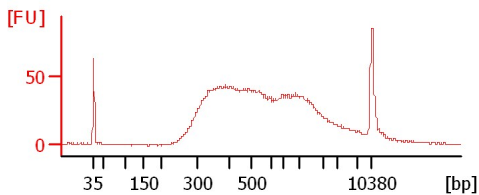
MG6 ChIP-Seq Lib



MG7 ChIP-Seq Lib

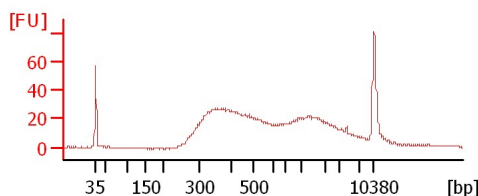
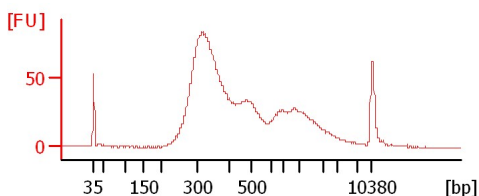
MG8 ChIP-Seq Lib

MG9 ChIP-Seq Lib



MG10 ChIP-Seq Lib

MG11 ChIP-Seq Lib



Assay Class: High Sensitivity DNA Assay
 Data Path: C:\...ents and Settings\Bioanalyzer\2012-11-20\2012-11-20_003.xad

Created: 11/20/2012 2:46:25 PM
 Modified: 11/20/2012 3:33:34 PM

Electrophoresis File Run Summary (Chip Summary)

Sample Name	Sample Comment	Rest. Digest	Status	Observation	Result Label	Result Color
KM-1 Lib		<input type="checkbox"/>	✓			
KM-2 Lib 1:2		<input type="checkbox"/>	✓			
KM-4 Lib 1:2		<input type="checkbox"/>	✓			
KM-10 Lib		<input type="checkbox"/>	✓			
MG5 ChIP-Seq Lib		<input type="checkbox"/>	✓			
MG6 ChIP-Seq Lib		<input type="checkbox"/>	✓			
MG7 ChIP-Seq Lib		<input type="checkbox"/>	✓			
MG8 ChIP-Seq Lib		<input type="checkbox"/>	✓			
MG9 ChIP-Seq Lib		<input type="checkbox"/>	✓			
MG10 ChIP-Seq Lib		<input type="checkbox"/>	✓			
MG11 ChIP-Seq Lib		<input type="checkbox"/>	✓			
Ladder		<input type="checkbox"/>	✓			

Chip Lot #

Reagent Kit Lot #

Chip Comments :

Assay Class: High Sensitivity DNA Assay
Data Path: C:\...ents and Settings\Bioanalyzer\2012-11-20\2012-11-20_003.xad

Created: 11/20/2012 2:46:25 PM
Modified: 11/20/2012 3:33:34 PM

Electrophoresis Assay Details

General Analysis Settings

Number of Available Sample and Ladder Wells (Max.) : 12
Minimum Visible Range [s] : 32
Maximum Visible Range [s] : 138
Start Analysis Time Range [s] : 33
End Analysis Time Range [s] : 137.5
Ladder Concentration [pg/μl] : 1950
Uses Standard Area for Ladder Fragments
Lower Marker Concentration [pg/μl] : 125
Upper Marker Concentration [pg/μl] : 75
Used Upper Marker for Quantitation
Standard Curve Fit is Point to Point
Show Data Aligned to Lower and Upper Marker

Integrator Settings

Integration Start Time [s] : 33.05
Integration End Time [s] : 137
Slope Threshold : 0.8
Height Threshold [FU] : 5
Area Threshold : 0.1
Width Threshold [s] : 0.6
Baseline Plateau [s] : 0.5

Filter Settings

Filter Width [s] : 0.5
Polynomial Order : 4

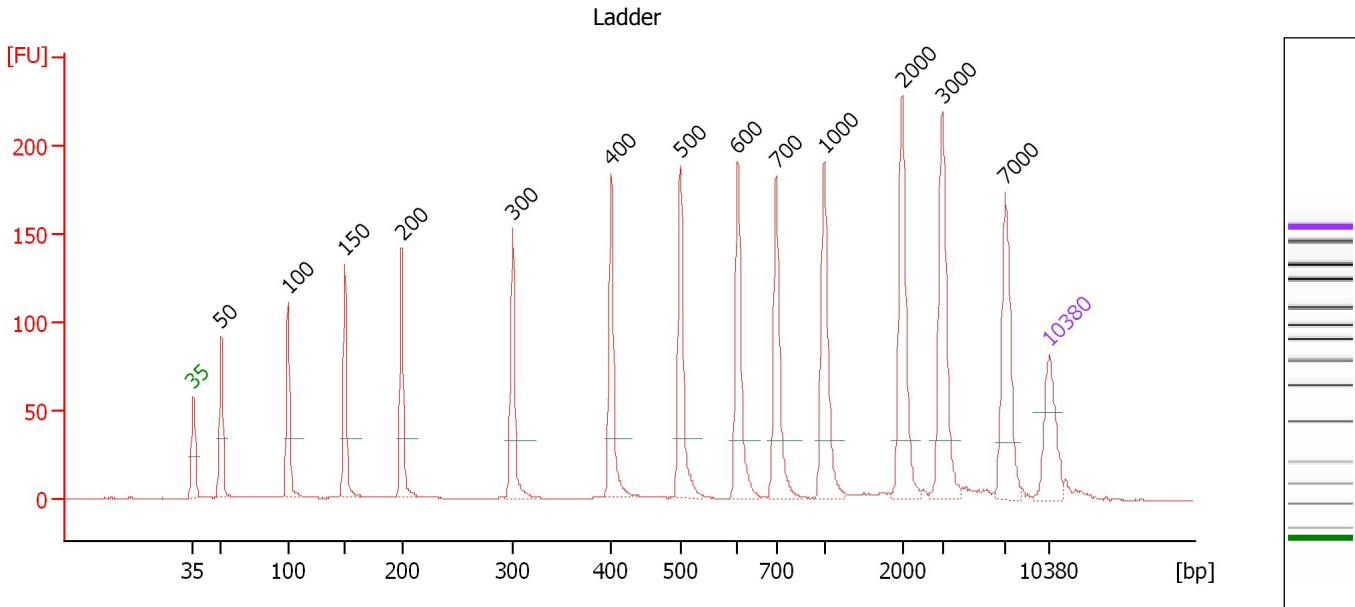
Ladder

Ladder Peak	Size	Area
1	35	160
2	50	210
3	100	208
4	150	221
5	200	242
6	300	270
7	400	305
8	500	306
9	600	336
10	700	321
11	1000	366
12	2000	413
13	3000	411
14	7000	400
15	10380	214

Assay Class: High Sensitivity DNA Assay
 Data Path: C:\...ents and Settings\Bioanalyzer\2012-11-20\2012-11-20_003.xad

Created: 11/20/2012 2:46:25 PM
 Modified: 11/20/2012 3:33:34 PM

Electropherogram Summary



Overall Results for Ladder

Noise: 0.2

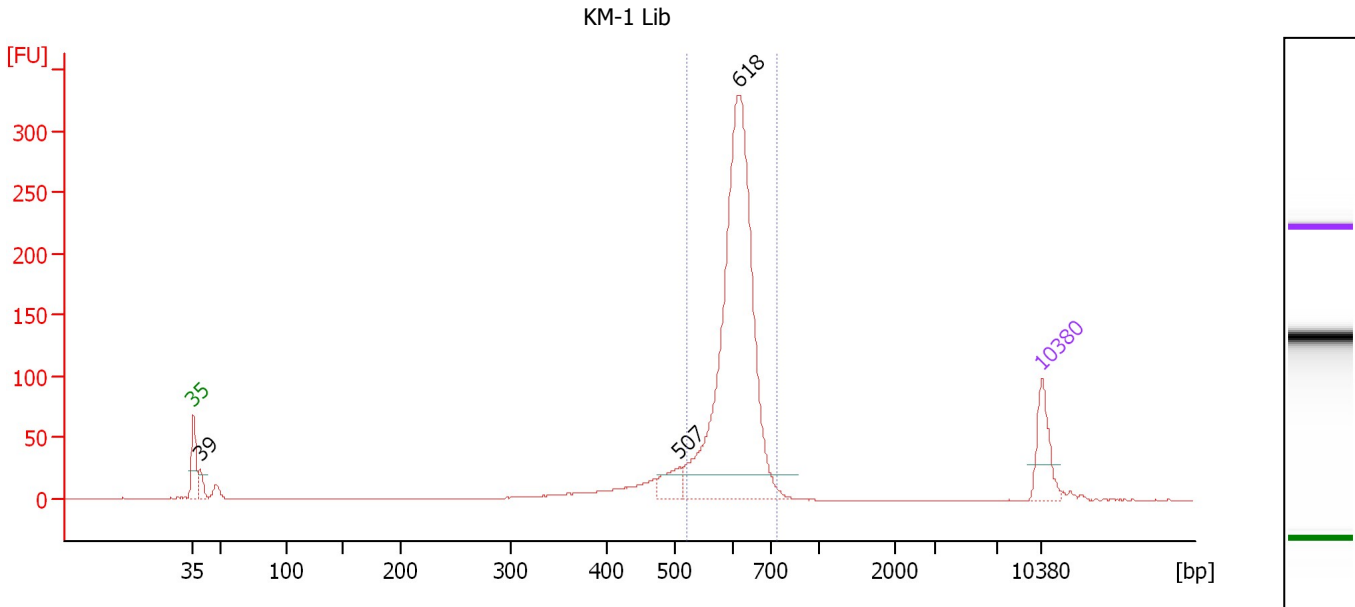
Peak table for Ladder

Peak	Size [bp]	Conc. [pg/μl]	Molarity [pmol/l]	Observations
1	35	125.00	5,411.3	Lower Marker
2	50	150.00	4,545.5	Ladder Peak
3	100	150.00	2,272.7	Ladder Peak
4	150	150.00	1,515.2	Ladder Peak
5	200	150.00	1,136.4	Ladder Peak
6	300	150.00	757.6	Ladder Peak
7	400	150.00	568.2	Ladder Peak
8	500	150.00	454.5	Ladder Peak
9	600	150.00	378.8	Ladder Peak
10	700	150.00	324.7	Ladder Peak
11	1,000	150.00	227.3	Ladder Peak
12	2,000	150.00	113.6	Ladder Peak
13	3,000	150.00	75.8	Ladder Peak
14	7,000	150.00	32.5	Ladder Peak
15	10,380	75.00	10.9	Upper Marker

Assay Class: High Sensitivity DNA Assay
 Data Path: C:\...ents and Settings\Bioanalyzer\2012-11-20\2012-11-20_003.xad

Created: 11/20/2012 2:46:25 PM
 Modified: 11/20/2012 3:33:34 PM

Electropherogram Summary Continued ...



Setpoint Deviations for sample 1 : KM-1 Lib

Height Threshold [FU] : 20

Overall Results for sample 1 : KM-1 Lib

Number of peaks found: 3 Corr. Area 1: 1,138.2
 Noise: 0.2

Peak table for sample 1 : KM-1 Lib

Peak	Size [bp]	Conc. [pg/μl]	Molarity [pmol/l]	Observations
1	35	125.00	5,411.3	Lower Marker
2	39	43.75	1,709.3	
3	507	57.01	170.4	
4	618	1,056.69	2,592.4	
5	10,380	75.00	10.9	Upper Marker

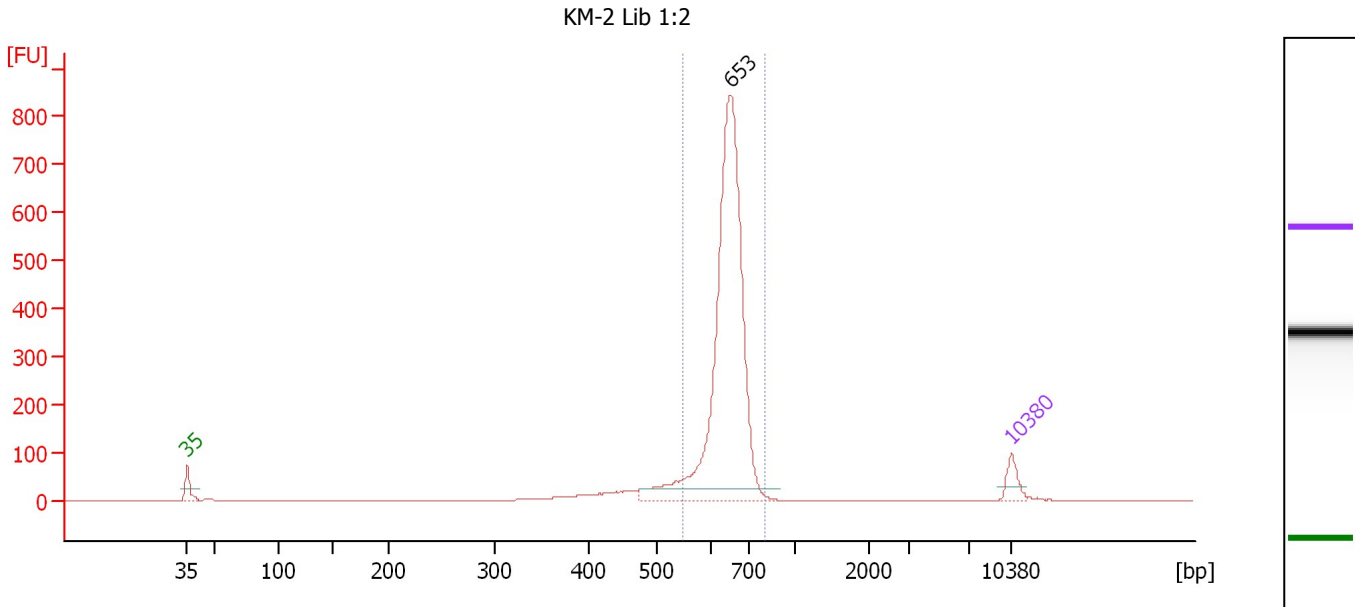
Region table for sample 1 : KM-1 Lib

From [bp]	To [bp]	Average Size [bp]	Molarity [pmol/l]	Conc. [pg/μl]	Corr. Area	% of Total	Size distribution in CV [%]	Color
519	738	611	2,635.2	1,060.20	1,138.2	81	5.9	Blue

Assay Class: High Sensitivity DNA Assay
 Data Path: C:\...ents and Settings\Bioanalyzer\2012-11-20\2012-11-20_003.xad

Created: 11/20/2012 2:46:25 PM
 Modified: 11/20/2012 3:33:34 PM

Electropherogram Summary Continued ...



Setpoint Deviations for sample 2 : KM-2 Lib 1:2

Height Threshold [FU] : 25

Overall Results for sample 2 : KM-2 Lib 1:2

Number of peaks found: 1 Corr. Area 1: 2,421.2
 Noise: 0.2

Peak table for sample 2 : KM-2 Lib 1:2

Peak	Size [bp]	Conc. [pg/μl]	Molarity [pmol/l]	Observations
1	35	125.00	5,411.3	Lower Marker
2	653	2,575.93	5,979.9	
3	10,380	75.00	10.9	Upper Marker

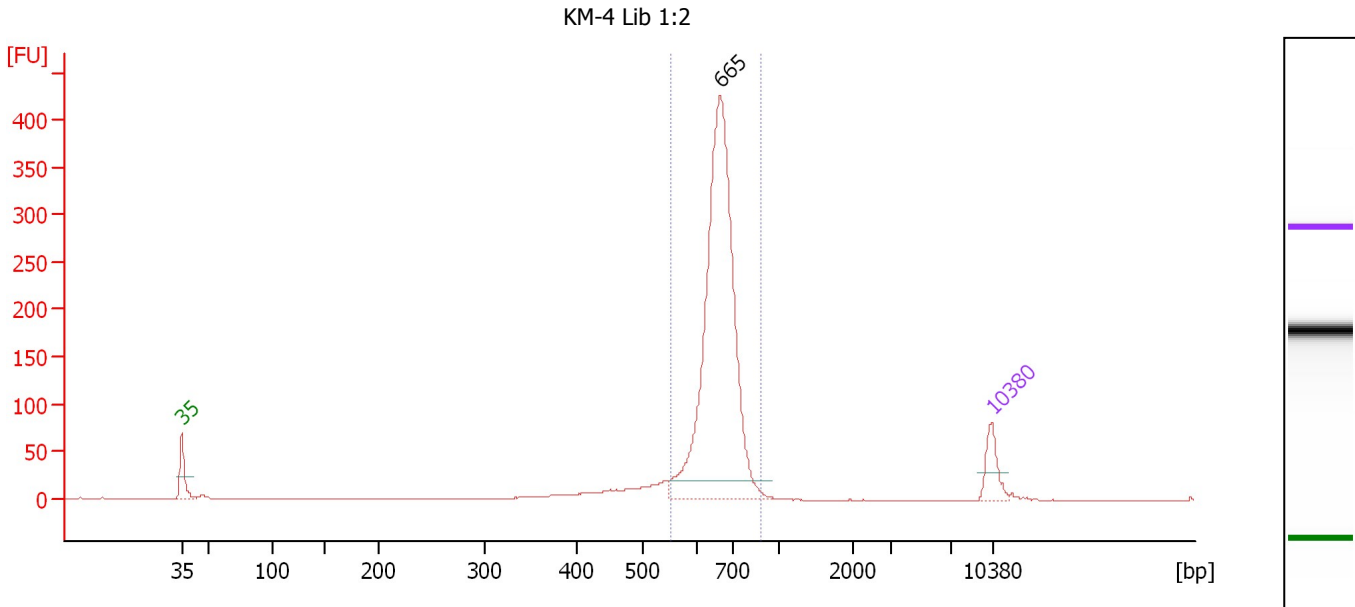
Region table for sample 2 : KM-2 Lib 1:2

From [bp]	To [bp]	Average Size [bp]	Molarity [pmol/l]	Conc. [pg/μl]	Corr. Area	% of Total	Size distribution in CV [%]	Color
550	802	647	5,710.7	2,433.25	2,421.2	88	5.5	Blue

Assay Class: High Sensitivity DNA Assay
 Data Path: C:\...ents and Settings\Bioanalyzer\2012-11-20\2012-11-20_003.xad

Created: 11/20/2012 2:46:25 PM
 Modified: 11/20/2012 3:33:34 PM

Electropherogram Summary Continued ...



Setpoint Deviations for sample 3 : KM-4 Lib 1:2

Height Threshold [FU] : 20

Overall Results for sample 3 : KM-4 Lib 1:2

Number of peaks found: 1 Corr. Area 1: 1,385.5
 Noise: 0.2

Peak table for sample 3 : KM-4 Lib 1:2

Peak	Size [bp]	Conc. [pg/μl]	Molarity [pmol/l]	Observations
1	35	125.00	5,411.3	Lower Marker
2	665	1,595.80	3,637.9	
3	10,380	75.00	10.9	Upper Marker

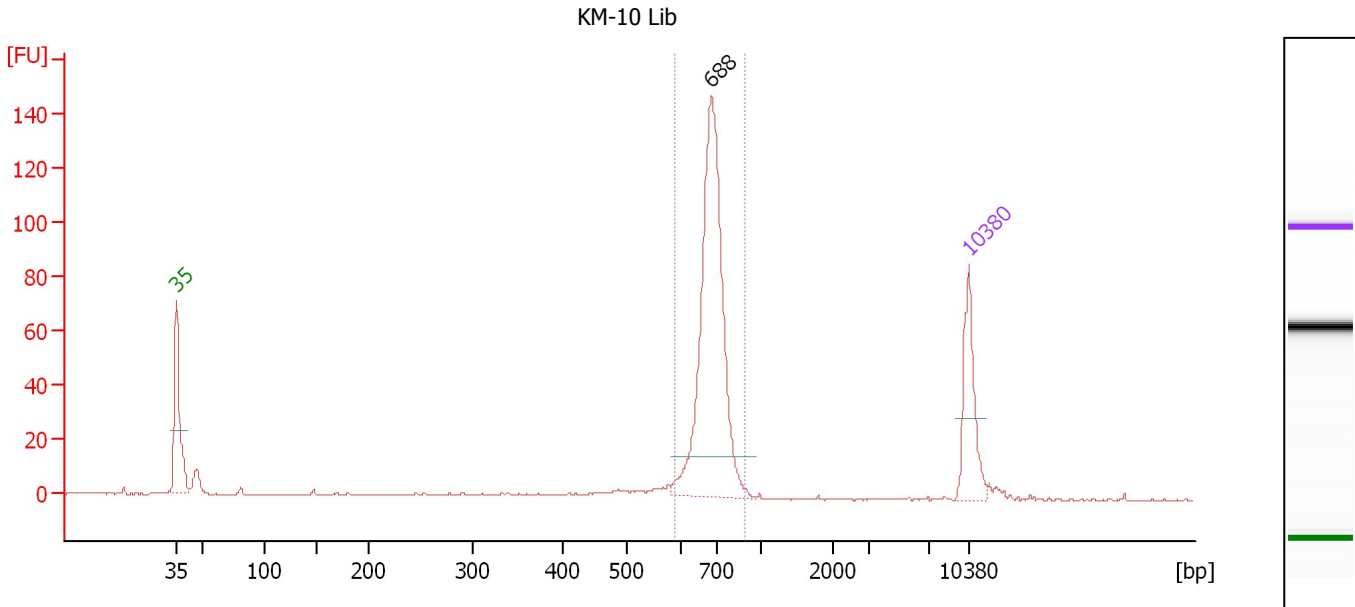
Region table for sample 3 : KM-4 Lib 1:2

From [bp]	To [bp]	Average Size [bp]	Molarity [pmol/l]	Conc. [pg/μl]	Corr. Area	% of Total	Size distribution in CV [%]	Color
553	881	663	3,635.7	1,584.54	1,385.5	88	7.1	Blue

Assay Class: High Sensitivity DNA Assay
 Data Path: C:\...ents and Settings\Bioanalyzer\2012-11-20\2012-11-20_003.xad

Created: 11/20/2012 2:46:25 PM
 Modified: 11/20/2012 3:33:34 PM

Electropherogram Summary Continued ...



Setpoint Deviations for sample 4 : KM-10 Lib

Height Threshold [FU] : 15

Overall Results for sample 4 : KM-10 Lib

Number of peaks found: 1 Corr. Area 1: 368.3
 Noise: 0.2

Peak table for sample 4 : KM-10 Lib

Peak	Size [bp]	Conc. [pg/μl]	Molarity [pmol/l]	Observations
1	35	125.00	5,411.3	Lower Marker
2	688	444.74	979.4	
3	10,380	75.00	10.9	Upper Marker

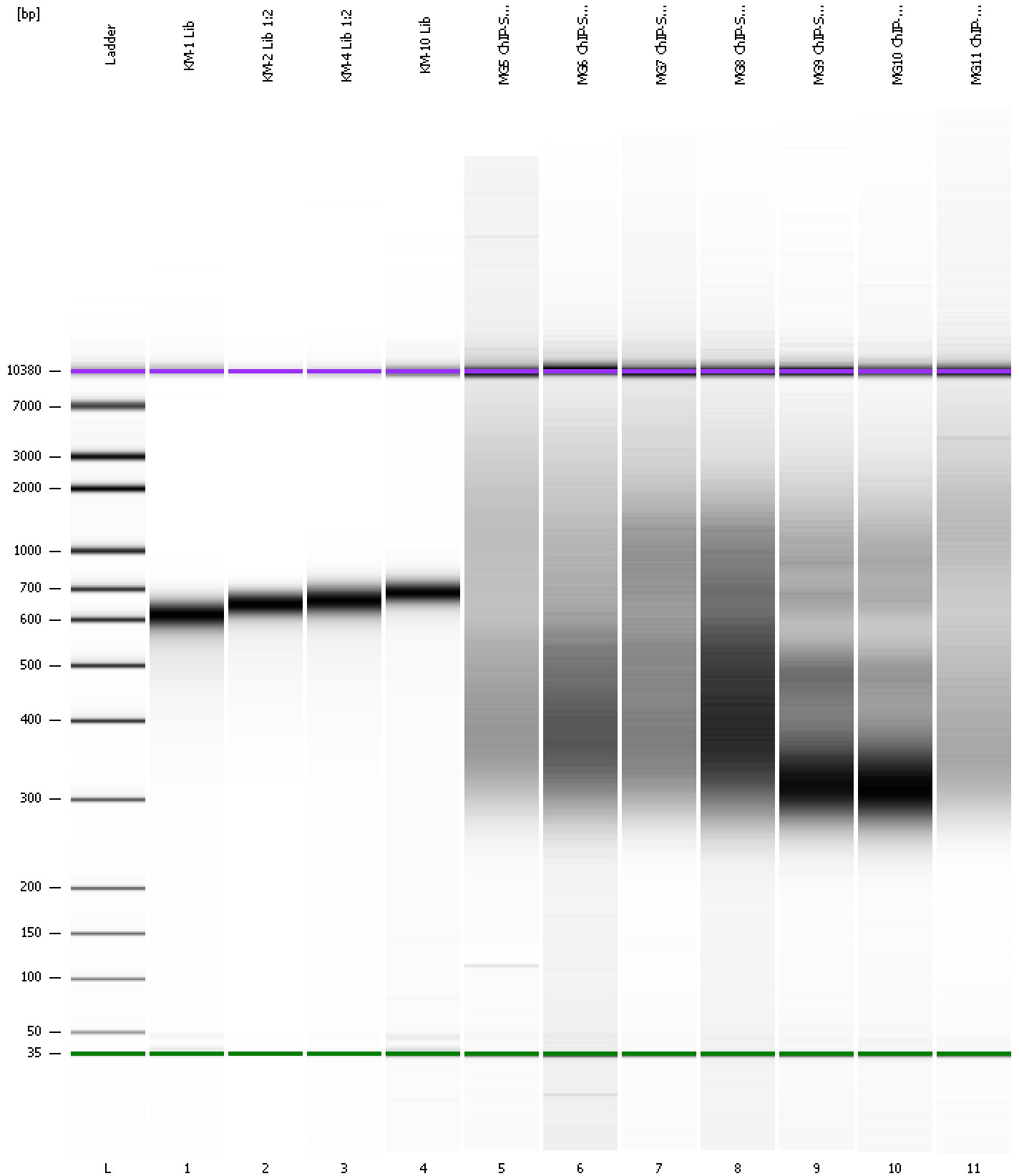
Region table for sample 4 : KM-10 Lib

From [bp]	To [bp]	Average Size [bp]	Molarity [pmol/l]	Conc. [pg/μl]	Corr. Area	% of Total	Size distribution in CV [%]	Color
589	892	697	952.4	436.32	368.3	82	6.8	Blue

Assay Class: High Sensitivity DNA Assay
Data Path: C:\...ents and Settings\Bioanalyzer\2012-11-20\2012-11-20_003.xad

Created: 11/20/2012 2:46:25 PM
Modified: 11/20/2012 3:33:34 PM

Gel Image



Assay Class: High Sensitivity DNA Assay
 Data Path: C:\...ents and Settings\Bioanalyzer\2012-11-20\2012-11-20_003.xad

Created: 11/20/2012 2:46:25 PM
 Modified: 11/20/2012 3:33:34 PM

Run Logbook

Description	Number	Source	Category	Sub Category	Time	Time Zone	User	Host
Run ended on port 1 (Number of wells acquired: 12)		Instrument	Run		11/20/2012 3:27:44 PM	(GMT --08:00) Pacific Standard Time	UC Davis	D8XSMGH1
Run started on port 1 (File: C:\Documents and Settings\Bioanalyzer\2012-11-20\2012-11-20_003.xad)		Instrument	Run		11/20/2012 2:46:30 PM	(GMT --08:00) Pacific Standard Time	UC Davis	D8XSMGH1
Product Number : G2938B		Instrument	Run		11/20/2012 2:46:30 PM	(GMT --08:00) Pacific Standard Time	UC Davis	D8XSMGH1
Name :		Instrument	Run		11/20/2012 2:46:30 PM	(GMT --08:00) Pacific Standard Time	UC Davis	D8XSMGH1
Vendor : Agilent Technologies		Instrument	Run		11/20/2012 2:46:30 PM	(GMT --08:00) Pacific Standard Time	UC Davis	D8XSMGH1
Serial# : DE13701086		Instrument	Run		11/20/2012 2:46:30 PM	(GMT --08:00) Pacific Standard Time	UC Davis	D8XSMGH1
Firmware : C.01.069		Instrument	Run		11/20/2012 2:46:30 PM	(GMT --08:00) Pacific Standard Time	UC Davis	D8XSMGH1
Cartridge : Electrode		Instrument	Run		11/20/2012 2:46:30 PM	(GMT --08:00) Pacific Standard Time	UC Davis	D8XSMGH1