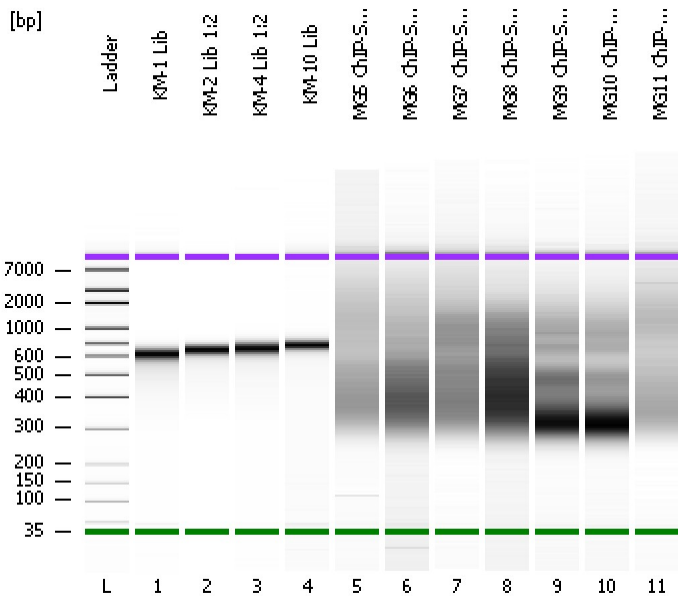


Assay Class: High Sensitivity DNA Assay  
Data Path: C:\...ents and Settings\Bioanalyzer\2012-11-20\2012-11-20\_003.xad

Created: 11/20/2012 2:46:25 PM  
Modified: 11/20/2012 3:33:34 PM

**Electrophoresis File Run Summary**



Instrument Information:

Instrument Name: DE13701086      Firmware: C.01.069  
Serial#: DE13701086      Type: G2938B

Assay Information:

Assay Origin Path: C:\Program Files\Agilent\2100 bioanalyzer\2100 expert\assays\dsDNA\High Sensitivity DNA.xsy  
Assay Class: High Sensitivity DNA Assay  
Version: 1.03  
Assay Comments: Copyright © 2003-2010 Agilent Technologies

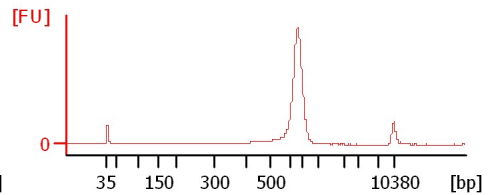
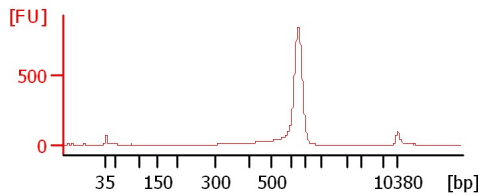
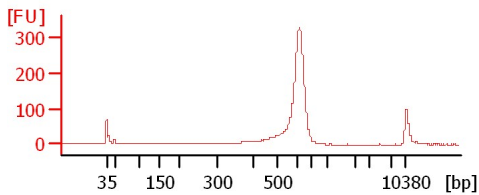
Chip Information:

Chip Lot #:      Reagent Kit Lot #:      Chip Comments:

**KM-1 Lib**

**KM-2 Lib 1:2**

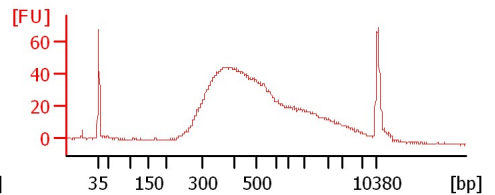
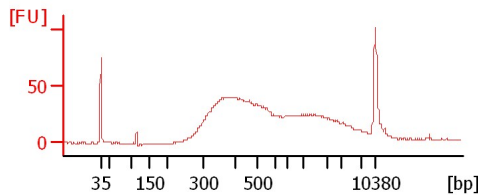
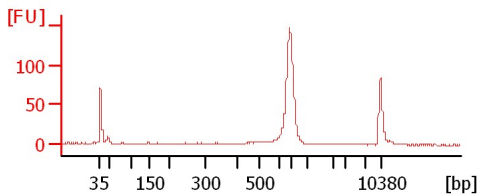
**KM-4 Lib 1:2**



**KM-10 Lib**

**MG5 ChIP-Seq Lib**

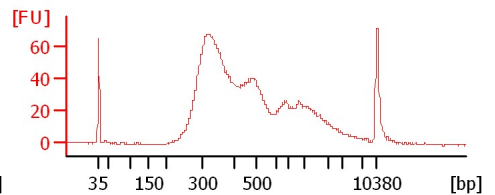
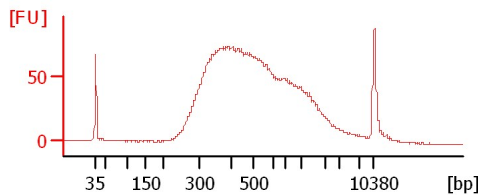
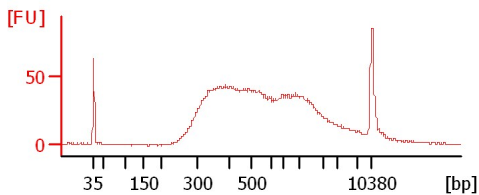
**MG6 ChIP-Seq Lib**



**MG7 ChIP-Seq Lib**

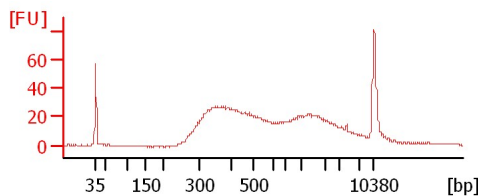
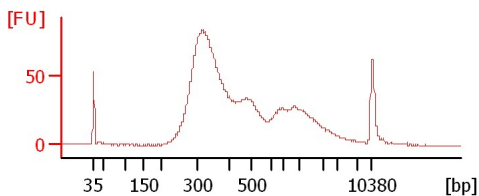
**MG8 ChIP-Seq Lib**

**MG9 ChIP-Seq Lib**



**MG10 ChIP-Seq Lib**

**MG11 ChIP-Seq Lib**



Assay Class: High Sensitivity DNA Assay  
 Data Path: C:\...ents and Settings\Bioanalyzer\2012-11-20\2012-11-20\_003.xad

Created: 11/20/2012 2:46:25 PM  
 Modified: 11/20/2012 3:33:34 PM

**Electrophoresis File Run Summary (Chip Summary)**

Sample Name	Sample Comment	Rest. Digest	Status	Observation	Result Label	Result Color
KM-1 Lib		<input type="checkbox"/>	✓			
KM-2 Lib 1:2		<input type="checkbox"/>	✓			
KM-4 Lib 1:2		<input type="checkbox"/>	✓			
KM-10 Lib		<input type="checkbox"/>	✓			
MG5 ChIP-Seq Lib		<input type="checkbox"/>	✓			
MG6 ChIP-Seq Lib		<input type="checkbox"/>	✓			
MG7 ChIP-Seq Lib		<input type="checkbox"/>	✓			
MG8 ChIP-Seq Lib		<input type="checkbox"/>	✓			
MG9 ChIP-Seq Lib		<input type="checkbox"/>	✓			
MG10 ChIP-Seq Lib		<input type="checkbox"/>	✓			
MG11 ChIP-Seq Lib		<input type="checkbox"/>	✓			
Ladder		<input type="checkbox"/>	✓			

**Chip Lot #**

**Reagent Kit Lot #**

**Chip Comments :**

Assay Class: High Sensitivity DNA Assay  
Data Path: C:\...ents and Settings\Bioanalyzer\2012-11-20\2012-11-20\_003.xad

Created: 11/20/2012 2:46:25 PM  
Modified: 11/20/2012 3:33:34 PM

**Electrophoresis Assay Details**

**General Analysis Settings**

Number of Available Sample and Ladder Wells (Max.) : 12  
Minimum Visible Range [s] : 32  
Maximum Visible Range [s] : 138  
Start Analysis Time Range [s] : 33  
End Analysis Time Range [s] : 137.5  
Ladder Concentration [pg/μl] : 1950  
Uses Standard Area for Ladder Fragments  
Lower Marker Concentration [pg/μl] : 125  
Upper Marker Concentration [pg/μl] : 75  
Used Upper Marker for Quantitation  
Standard Curve Fit is Point to Point  
Show Data Aligned to Lower and Upper Marker

**Integrator Settings**

Integration Start Time [s] : 33.05  
Integration End Time [s] : 137  
Slope Threshold : 0.8  
Height Threshold [FU] : 5  
Area Threshold : 0.1  
Width Threshold [s] : 0.6  
Baseline Plateau [s] : 0.5

**Filter Settings**

Filter Width [s] : 0.5  
Polynomial Order : 4

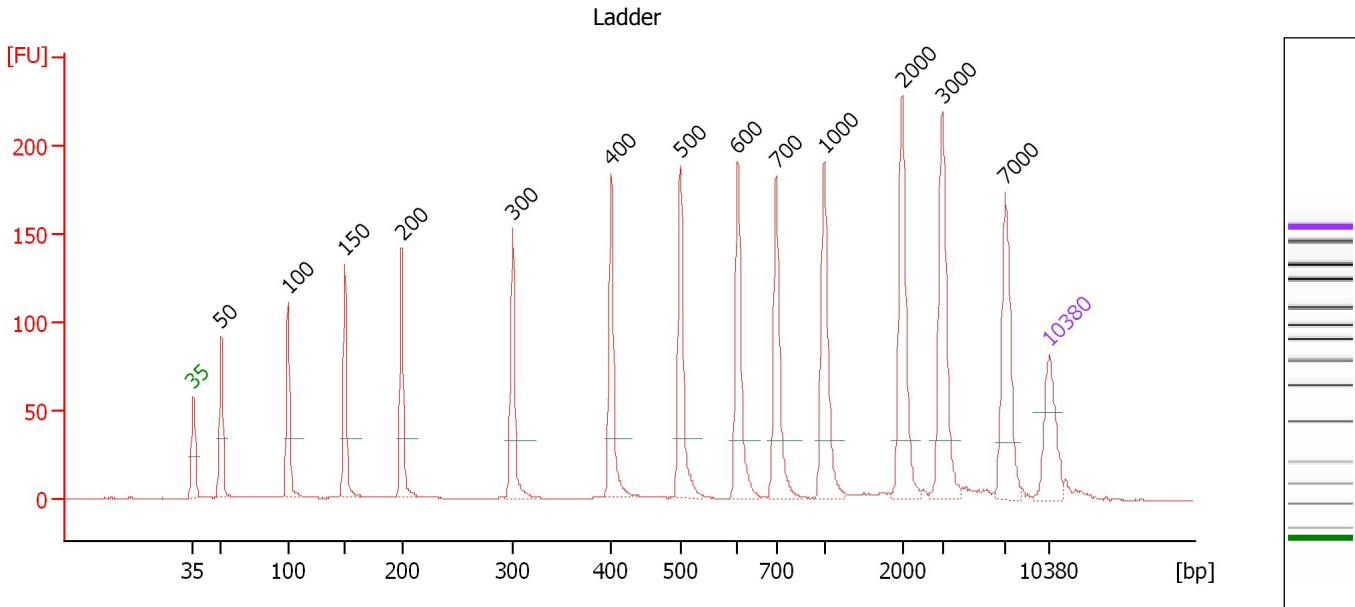
**Ladder**

Ladder Peak	Size	Area
1	35	160
2	50	210
3	100	208
4	150	221
5	200	242
6	300	270
7	400	305
8	500	306
9	600	336
10	700	321
11	1000	366
12	2000	413
13	3000	411
14	7000	400
15	10380	214

Assay Class: High Sensitivity DNA Assay  
 Data Path: C:\...ents and Settings\Bioanalyzer\2012-11-20\2012-11-20\_003.xad

Created: 11/20/2012 2:46:25 PM  
 Modified: 11/20/2012 3:33:34 PM

**Electropherogram Summary**



**Overall Results for Ladder**

Noise: 0.2

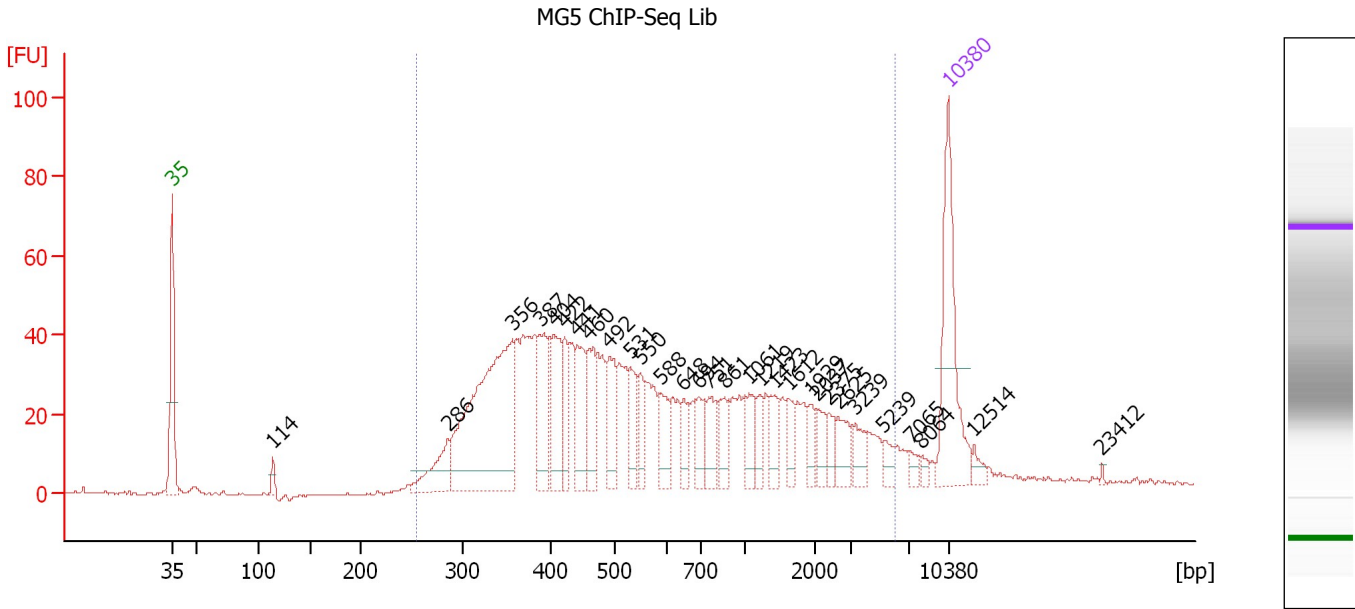
**Peak table for Ladder**

Peak	Size [bp]	Conc. [pg/μl]	Molarity [pmol/l]	Observations
1	35	125.00	5,411.3	Lower Marker
2	50	150.00	4,545.5	Ladder Peak
3	100	150.00	2,272.7	Ladder Peak
4	150	150.00	1,515.2	Ladder Peak
5	200	150.00	1,136.4	Ladder Peak
6	300	150.00	757.6	Ladder Peak
7	400	150.00	568.2	Ladder Peak
8	500	150.00	454.5	Ladder Peak
9	600	150.00	378.8	Ladder Peak
10	700	150.00	324.7	Ladder Peak
11	1,000	150.00	227.3	Ladder Peak
12	2,000	150.00	113.6	Ladder Peak
13	3,000	150.00	75.8	Ladder Peak
14	7,000	150.00	32.5	Ladder Peak
15	10,380	75.00	10.9	Upper Marker

Assay Class: High Sensitivity DNA Assay  
 Data Path: C:\...ents and Settings\Bioanalyzer\2012-11-20\2012-11-20\_003.xad

Created: 11/20/2012 2:46:25 PM  
 Modified: 11/20/2012 3:33:34 PM

**Electropherogram Summary Continued ...**



**Overall Results for sample 5 : MG5 ChIP-Seq Lib**

Number of peaks found: 30                      Corr. Area 1: 1,261.5  
 Noise: 0.2

**Peak table for sample 5 : MG5 ChIP-Seq Lib**

Peak	Size [bp]	Conc. [pg/μl]	Molarity [pmol/l]	Observations
1	35	125.00	5,411.3	Lower Marker
2	114	8.80	116.8	
3	286	38.13	202.1	
4	356	226.64	964.3	
5	387	55.24	216.2	
6	404	50.31	188.8	
7	422	30.03	107.9	
8	441	41.03	140.9	
9	460	37.76	124.4	
10	492	35.96	110.6	
11	531	26.37	75.3	
12	550	21.23	58.5	
13	588	26.02	67.0	
14	648	17.50	40.9	
15	694	20.40	44.6	
16	751	24.08	48.6	
17	861	19.45	34.2	
18	1,061	16.47	23.5	
19	1,219	14.03	17.4	
20	1,423	16.09	17.1	
21	1,612	13.22	12.4	
22	1,929	10.86	8.5	
23	2,037	12.79	9.5	
24	2,375	9.40	6.0	
25	2,625	17.06	9.8	
26	3,239	12.95	6.1	

Assay Class: High Sensitivity DNA Assay  
 Data Path: C:\...ents and Settings\Bioanalyzer\2012-11-20\2012-11-20\_003.xad


Created: 11/20/2012 2:46:25 PM  
 Modified: 11/20/2012 3:33:34 PM

### Electropherogram Summary Continued ...

#### ... Peak table for sample 5 : MG5 ChIP-Seq Lib

Peak	Size [bp]	Conc. [pg/μl]	Molarity [pmol/l]	Observations
27	5,239	7.67	2.2	
28	7,065	4.86	1.0	
29	8,064	4.07	0.8	
30	10,380	75.00	10.9	Upper Marker
31	12,514	0.00	0.0	
32	23,412	0.00	0.0	

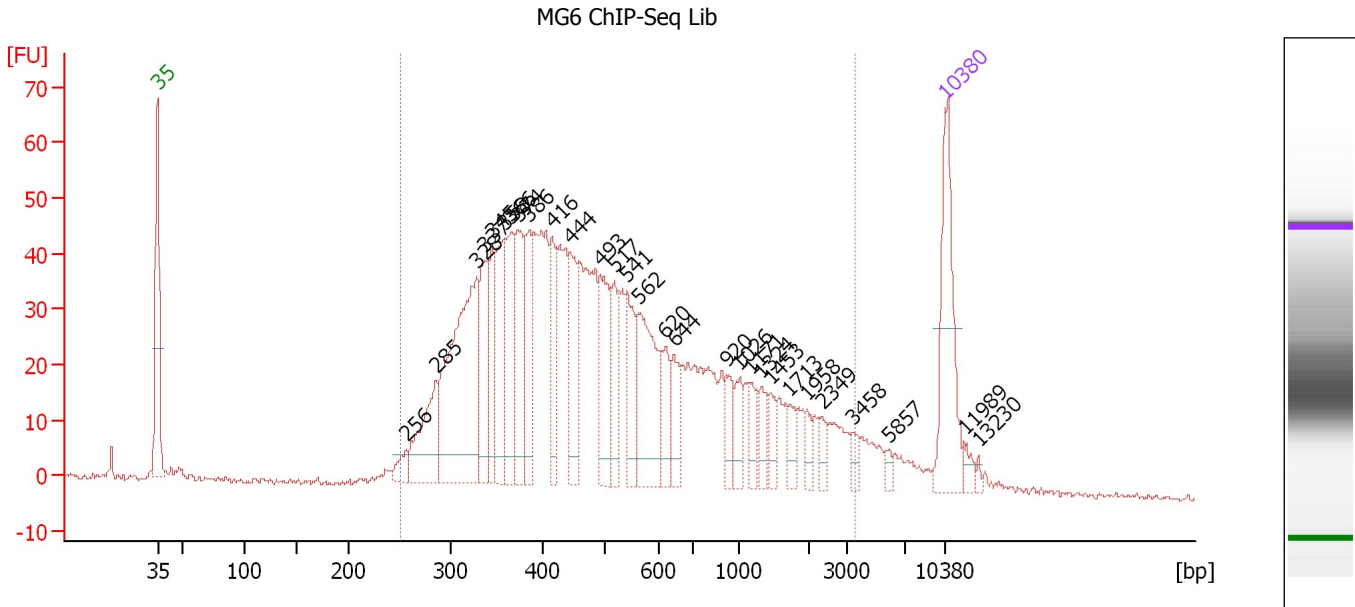
#### Region table for sample 5 : MG5 ChIP-Seq Lib

From [bp]	To [bp]	Average Size [bp]	Molarity [pmol/l]	Conc. [pg/μl]	Corr. Area	% of Total	Size distribution in CV [%]	Color
256	5,967	916	3,639.3	1,170.82	1,261.5	96	100.0	

Assay Class: High Sensitivity DNA Assay  
 Data Path: C:\...ents and Settings\Bioanalyzer\2012-11-20\2012-11-20\_003.xad

Created: 11/20/2012 2:46:25 PM  
 Modified: 11/20/2012 3:33:34 PM

**Electropherogram Summary Continued ...**



**Overall Results for sample 6 : MG6 ChIP-Seq Lib**

Number of peaks found: 29                      Corr. Area 1: 1,369.0  
 Noise: 0.5

**Peak table for sample 6 : MG6 ChIP-Seq Lib**

Peak	Size [bp]	Conc. [pg/μl]	Molarity [pmol/l]	Observations
1	35	125.00	5,411.3	Lower Marker
2	256	14.27	84.5	
3	285	71.48	379.4	
4	328	211.69	976.9	
5	337	62.61	281.7	
6	345	52.91	232.7	
7	358	77.82	329.5	
8	366	71.02	293.8	
9	374	70.53	286.1	
10	386	56.54	222.2	
11	416	48.39	176.4	
12	444	54.75	186.7	
13	493	65.15	200.4	
14	517	36.25	106.2	
15	541	46.68	130.8	
16	562	89.31	240.6	
17	620	30.08	73.6	
18	644	28.24	66.4	
19	920	18.14	29.9	
20	1,026	18.81	27.8	
21	1,171	14.60	18.9	
22	1,324	15.57	17.8	
23	1,453	14.35	15.0	
24	1,713	12.22	10.8	
25	1,958	9.38	7.3	
26	2,349	8.47	5.5	

Assay Class: High Sensitivity DNA Assay  
 Data Path: C:\...ents and Settings\Bioanalyzer\2012-11-20\2012-11-20\_003.xad


Created: 11/20/2012 2:46:25 PM  
 Modified: 11/20/2012 3:33:34 PM

### Electropherogram Summary Continued ...

#### ... Peak table for sample 6 : MG6 ChIP-Seq Lib

Peak	Size [bp]	Conc. [pg/μl]	Molarity [pmol/l]	Observations
27	3,458	7.14	3.1	
28	5,857	4.29	1.1	
29	10,380	75.00	10.9	Upper Marker
30	11,989	0.00	0.0	
31	13,230	0.00	0.0	

#### Region table for sample 6 : MG6 ChIP-Seq Lib

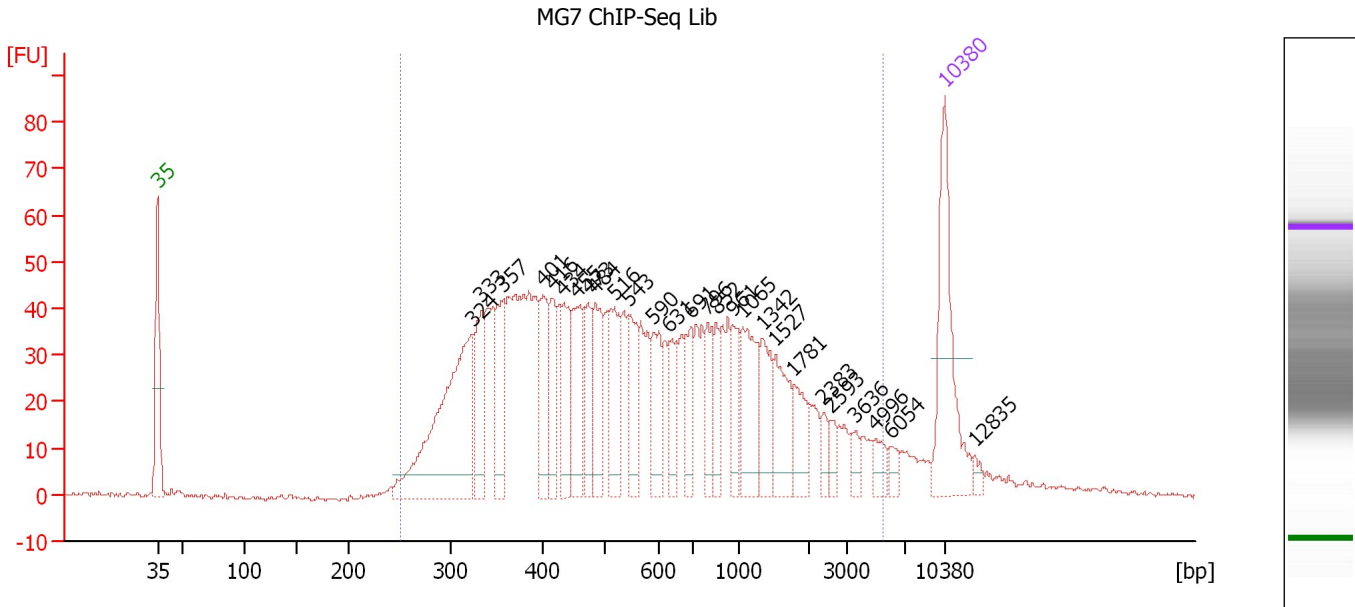
From [bp]	To [bp]	Average Size [bp]	Molarity [pmol/l]	Conc. [pg/μl]	Corr. Area	% of Total	Size distribution in CV [%]	Color
251	3,632	671	6,074.4	1,790.15	1,369.0	94	83.2	



Assay Class: High Sensitivity DNA Assay  
 Data Path: C:\...ents and Settings\Bioanalyzer\2012-11-20\2012-11-20\_003.xad

Created: 11/20/2012 2:46:25 PM  
 Modified: 11/20/2012 3:33:34 PM

**Electropherogram Summary Continued ...**



**Overall Results for sample 7 : MG7 ChIP-Seq Lib**

Number of peaks found: 27                      Corr. Area 1: 1,585.9  
 Noise: 0.5

**Peak table for sample 7 : MG7 ChIP-Seq Lib**

Peak	Size [bp]	Conc. [pg/μl]	Molarity [pmol/l]	Observations
1	35	125.00	5,411.3	Lower Marker
2	324	197.16	922.8	
3	333	55.59	253.0	
4	357	57.44	243.7	
5	401	47.64	179.9	
6	416	38.34	139.6	
7	434	47.08	164.5	
8	455	48.73	162.2	
9	473	35.63	114.2	
10	484	49.74	155.7	
11	516	56.71	166.4	
12	543	41.08	114.5	
13	590	38.47	98.8	
14	631	26.35	63.3	
15	691	28.05	61.5	
16	796	23.52	44.8	
17	852	22.76	40.5	
18	961	26.43	41.7	
19	1,065	52.98	75.4	
20	1,342	33.07	37.3	
21	1,527	36.52	36.2	
22	1,781	26.07	22.2	
23	2,383	8.80	5.6	
24	2,593	8.66	5.1	
25	3,636	8.17	3.4	
26	4,996	10.98	3.3	

Assay Class: High Sensitivity DNA Assay  
 Data Path: C:\...ents and Settings\Bioanalyzer\2012-11-20\2012-11-20\_003.xad

Created: 11/20/2012 2:46:25 PM  
 Modified: 11/20/2012 3:33:34 PM

### Electropherogram Summary Continued ...

#### ... Peak table for sample 7 : MG7 ChIP-Seq Lib

Peak	Size [bp]	Conc. [pg/μl]	Molarity [pmol/l]	Observations
27	6,054	6.82	1.7	
28	10,380	75.00	10.9	Upper Marker
29	12,835	0.00	0.0	

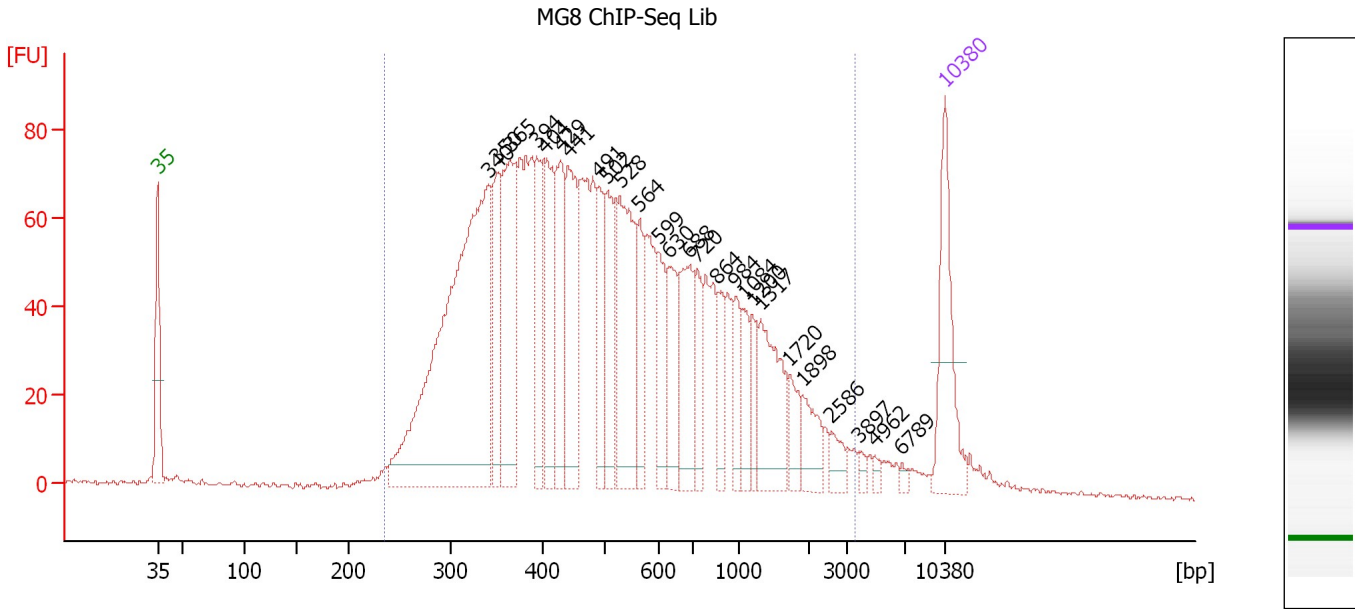
#### Region table for sample 7 : MG7 ChIP-Seq Lib

From [bp]	To [bp]	Average Size [bp]	Molarity [pmol/l]	Conc. [pg/μl]	Corr. Area	% of Total	Size distribution in CV [%]	Color
250	5,502	836	4,771.0	1,531.89	1,585.9	95	97.1	■

Assay Class: High Sensitivity DNA Assay  
 Data Path: C:\...ents and Settings\Bioanalyzer\2012-11-20\2012-11-20\_003.xad

Created: 11/20/2012 2:46:25 PM  
 Modified: 11/20/2012 3:33:34 PM

**Electropherogram Summary Continued ...**



**Overall Results for sample 8 : MG8 ChIP-Seq Lib**

Number of peaks found: 26                      Corr. Area 1: 2,436.6  
 Noise: 0.5

**Peak table for sample 8 : MG8 ChIP-Seq Lib**

Peak	Size [bp]	Conc. [pg/μl]	Molarity [pmol/l]	Observations
1	35	125.00	5,411.3	Lower Marker
2	340	534.15	2,378.6	
3	350	77.44	335.2	
4	365	155.05	644.1	
5	394	79.06	304.0	
6	404	102.24	383.6	
7	429	89.61	316.3	
8	441	115.85	398.3	
9	491	62.10	191.8	
10	502	73.19	220.7	
11	528	141.48	406.3	
12	564	45.64	122.5	
13	599	46.57	117.8	
14	630	56.06	134.9	
15	688	81.86	180.3	
16	720	40.75	85.7	
17	864	29.84	52.4	
18	984	34.85	53.6	
19	1,084	28.33	39.6	
20	1,200	24.89	31.4	
21	1,317	77.59	89.3	
22	1,720	21.66	19.1	
23	1,898	28.76	23.0	
24	2,586	14.79	8.7	
25	3,897	5.05	2.0	
26	4,962	4.38	1.3	

Assay Class: High Sensitivity DNA Assay  
 Data Path: C:\...ents and Settings\Bioanalyzer\2012-11-20\2012-11-20\_003.xad


Created: 11/20/2012 2:46:25 PM  
 Modified: 11/20/2012 3:33:34 PM

### Electropherogram Summary Continued ...

#### ... Peak table for sample 8 : MG8 ChIP-Seq Lib

Peak	Size [bp]	Conc. [pg/μl]	Molarity [pmol/l]	Observations
27	6,789	3.25	0.7	
28	10,380	75.00	10.9	Upper Marker

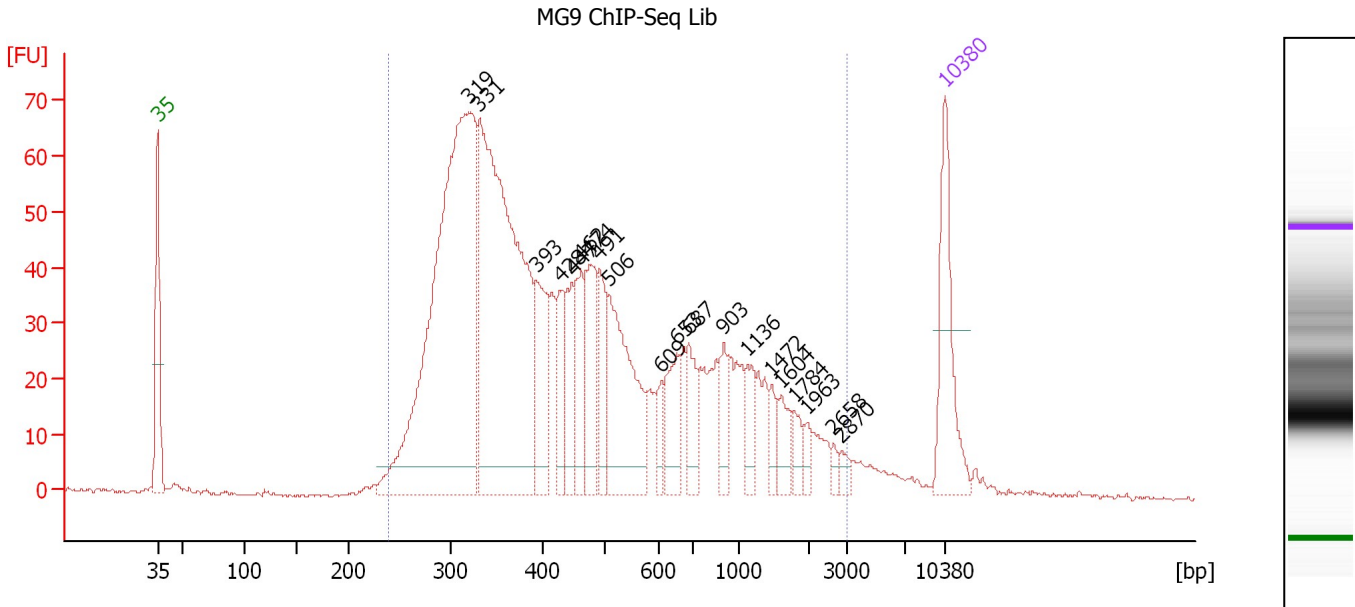
#### Region table for sample 8 : MG8 ChIP-Seq Lib

From [bp]	To [bp]	Average Size [bp]	Molarity [pmol/l]	Conc. [pg/μl]	Corr. Area	% of Total	Size distribution in CV [%]	Color
235	3,555	640	8,708.1	2,574.31	2,436.6	97	73.8	

Assay Class: High Sensitivity DNA Assay  
 Data Path: C:\...ents and Settings\Bioanalyzer\2012-11-20\2012-11-20\_003.xad

Created: 11/20/2012 2:46:25 PM  
 Modified: 11/20/2012 3:33:34 PM

**Electropherogram Summary Continued ...**



**Overall Results for sample 9 : MG9 ChIP-Seq Lib**

Number of peaks found: 20                      Corr. Area 1: 1,581.0  
 Noise: 0.3

**Peak table for sample 9 : MG9 ChIP-Seq Lib**

Peak	Size [bp]	Conc. [pg/μl]	Molarity [pmol/l]	Observations
1	35	125.00	5,411.3	Lower Marker
2	319	646.12	3,067.2	
3	331	546.84	2,504.1	
4	393	83.68	322.6	
5	428	43.95	155.6	
6	447	50.89	172.3	
7	462	56.22	184.5	
8	474	74.98	239.7	
9	491	47.91	147.9	
10	506	148.17	443.8	
11	609	17.96	44.7	
12	653	47.60	110.4	
13	687	37.43	82.6	
14	903	24.46	41.0	
15	1,136	25.41	33.9	
16	1,472	13.32	13.7	
17	1,604	23.64	22.3	
18	1,784	13.83	11.7	
19	1,963	8.69	6.7	
20	2,658	5.79	3.3	
21	2,870	6.62	3.5	
22	10,380	75.00	10.9	Upper Marker

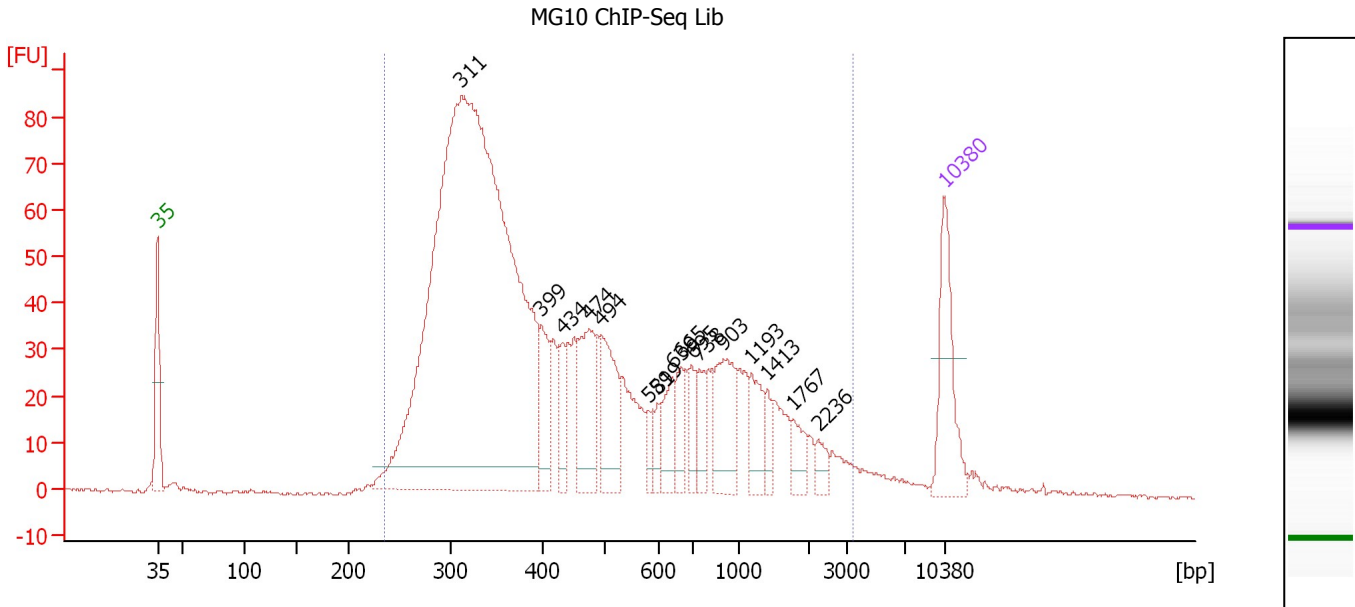
**Region table for sample 9 : MG9 ChIP-Seq Lib**

From [bp]	To [bp]	Average Size [bp]	Molarity [pmol/l]	Conc. [pg/μl]	Corr. Area	% of Total	Size distribution in CV [%]	Color
238	2,997	588	8,085.9	2,161.66	1,581.0	97	77.5	Blue

Assay Class: High Sensitivity DNA Assay  
 Data Path: C:\...ents and Settings\Bioanalyzer\2012-11-20\2012-11-20\_003.xad

Created: 11/20/2012 2:46:25 PM  
 Modified: 11/20/2012 3:33:34 PM

**Electropherogram Summary Continued ...**



**Overall Results for sample 10 : MG10 ChIP-Seq Lib**

Number of peaks found: 16      Corr. Area 1: 1,752.7  
 Noise: 0.5

**Peak table for sample 10 : MG10 ChIP-Seq Lib**

Peak	Size [bp]	Conc. [pg/μl]	Molarity [pmol/l]	Observations
1	35	125.00	5,411.3	Lower Marker
2	311	1,513.79	7,381.9	
3	399	60.51	229.5	
4	434	38.23	133.5	
5	474	93.68	299.5	
6	494	85.74	263.2	
7	581	16.57	43.3	
8	599	17.08	43.2	
9	639	39.44	93.5	
10	665	33.48	76.3	
11	695	26.84	58.5	
12	738	29.31	60.2	
13	903	75.92	127.4	
14	1,193	37.35	47.4	
15	1,413	15.46	16.6	
16	1,767	20.98	18.0	
17	2,236	12.96	8.8	
18	10,380	75.00	10.9	Upper Marker

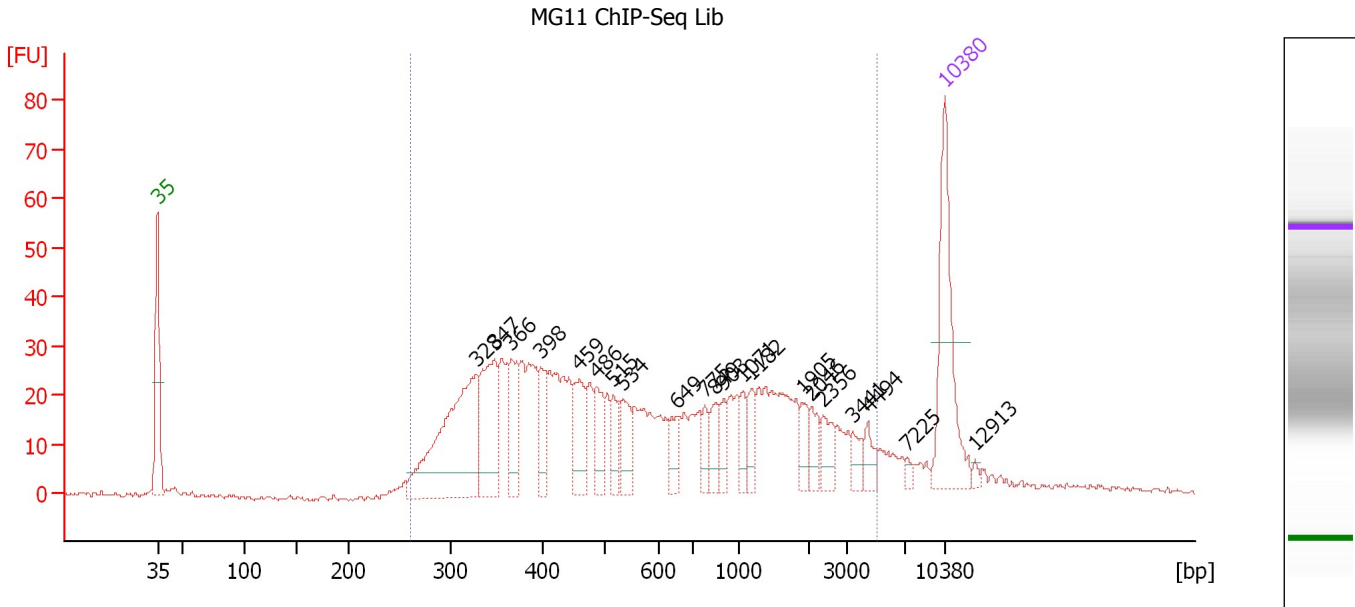
**Region table for sample 10 : MG10 ChIP-Seq Lib**

From [bp]	To [bp]	Average Size [bp]	Molarity [pmol/l]	Conc. [pg/μl]	Corr. Area	% of Total	Size distribution in CV [%]	Color
235	3,419	585	9,267.3	2,402.46	1,752.7	97	81.4	Blue

Assay Class: High Sensitivity DNA Assay  
 Data Path: C:\...ents and Settings\Bioanalyzer\2012-11-20\2012-11-20\_003.xad

Created: 11/20/2012 2:46:25 PM  
 Modified: 11/20/2012 3:33:34 PM

**Electropherogram Summary Continued ...**



**Overall Results for sample 11 : MG11 ChIP-Seq Lib**

Number of peaks found: 21                      Corr. Area 1: 930.3  
 Noise: 0.6

**Peak table for sample 11 : MG11 ChIP-Seq Lib**

Peak	Size [bp]	Conc. [pg/μl]	Molarity [pmol/l]	Observations
1	35	125.00	5,411.3	Lower Marker
2	328	170.15	786.3	
3	347	80.25	350.1	
4	366	39.65	164.1	
5	398	28.46	108.3	
6	459	37.78	124.6	
7	486	26.43	82.3	
8	515	18.13	53.4	
9	534	27.03	76.7	
10	649	18.58	43.4	
11	775	13.39	26.2	
12	849	17.52	31.3	
13	903	13.56	22.8	
14	1,071	13.63	19.3	
15	1,182	15.76	20.2	
16	1,905	12.68	10.1	
17	2,046	12.63	9.4	
18	2,356	15.62	10.0	
19	3,441	10.33	4.5	
20	4,494	10.80	3.6	
21	7,225	3.13	0.7	
22	10,380	75.00	10.9	Upper Marker
23	12,913	0.00	0.0	

Assay Class: High Sensitivity DNA Assay  
Data Path: C:\...ents and Settings\Bioanalyzer\2012-11-20\2012-11-20\_003.xad

Created: 11/20/2012 2:46:25 PM  
Modified: 11/20/2012 3:33:34 PM

**Electropherogram Summary Continued ...****... Region table for sample 11 : MG11 ChIP-Seq Lib**

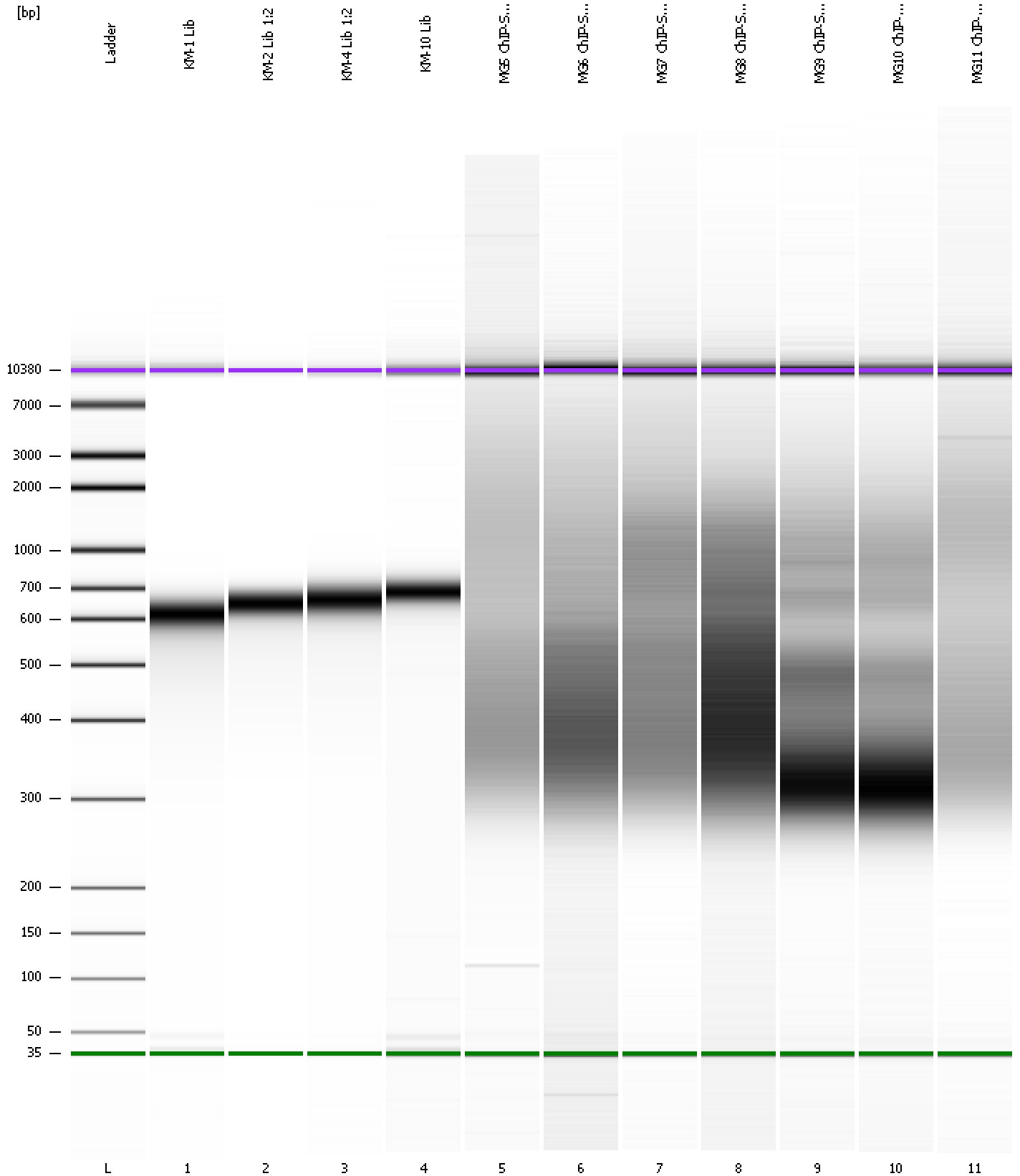
<b>From [bp]</b>	<b>To [bp]</b>	<b>Average Size [bp]</b>	<b>Molarity [pmol/l]</b>	<b>Conc. [pg/μl]</b>	<b>Corr. Area</b>	<b>% of Total</b>	<b>Size distribution in CV [%]</b>	<b>Color</b>
260	5,088	917	3,285.8	1,058.15	930.3	93	96.1	■



Assay Class: High Sensitivity DNA Assay  
Data Path: C:\...ents and Settings\Bioanalyzer\2012-11-20\2012-11-20\_003.xad

Created: 11/20/2012 2:46:25 PM  
Modified: 11/20/2012 3:33:34 PM

**Gel Image**



Assay Class: High Sensitivity DNA Assay  
 Data Path: C:\...ents and Settings\Bioanalyzer\2012-11-20\2012-11-20\_003.xad

Created: 11/20/2012 2:46:25 PM  
 Modified: 11/20/2012 3:33:34 PM

**Run Logbook**

Description	Number	Source	Category	Sub Category	Time	Time Zone	User	Host
Run ended on port 1 (Number of wells acquired: 12)		Instrument	Run		11/20/2012 3:27:44 PM	(GMT --08:00) Pacific Standard Time	UC Davis	D8XSMGH1
Run started on port 1 (File: C:\Documents and Settings\Bioanalyzer\2012-11-20\2012-11-20_003.xad)		Instrument	Run		11/20/2012 2:46:30 PM	(GMT --08:00) Pacific Standard Time	UC Davis	D8XSMGH1
Product Number : G2938B		Instrument	Run		11/20/2012 2:46:30 PM	(GMT --08:00) Pacific Standard Time	UC Davis	D8XSMGH1
Name :		Instrument	Run		11/20/2012 2:46:30 PM	(GMT --08:00) Pacific Standard Time	UC Davis	D8XSMGH1
Vendor : Agilent Technologies		Instrument	Run		11/20/2012 2:46:30 PM	(GMT --08:00) Pacific Standard Time	UC Davis	D8XSMGH1
Serial# : DE13701086		Instrument	Run		11/20/2012 2:46:30 PM	(GMT --08:00) Pacific Standard Time	UC Davis	D8XSMGH1
Firmware : C.01.069		Instrument	Run		11/20/2012 2:46:30 PM	(GMT --08:00) Pacific Standard Time	UC Davis	D8XSMGH1
Cartridge : Electrode		Instrument	Run		11/20/2012 2:46:30 PM	(GMT --08:00) Pacific Standard Time	UC Davis	D8XSMGH1