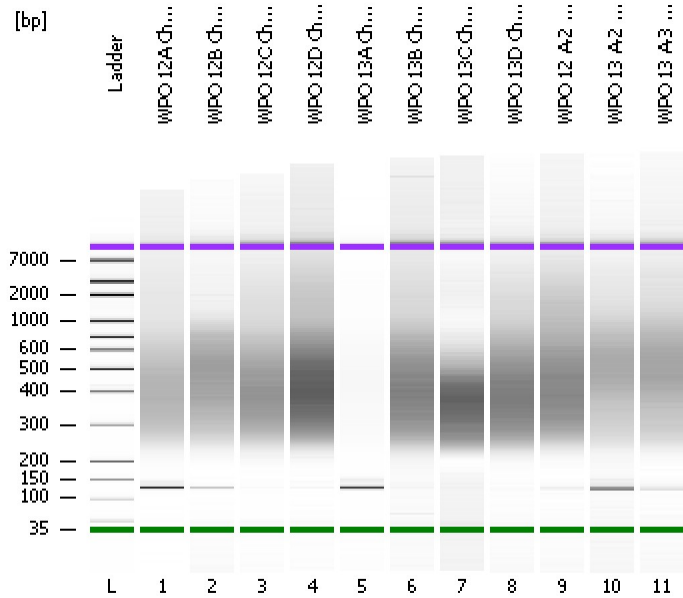


Assay Class: High Sensitivity DNA Assay
Data Path: C:\...ents and Settings\Bioanalyzer\2012-11-20\2012-11-20_004.xad

Created: 11/20/2012 3:52:16 PM
Modified: 11/20/2012 4:45:57 PM

Electrophoresis File Run Summary



Instrument Information:

Instrument Name: DE13701086 Firmware: C.01.069
Serial#: DE13701086 Type: G2938B

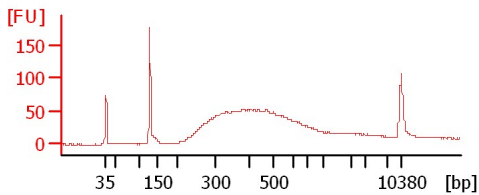
Assay Information:

Assay Origin Path: C:\Program Files\Agilent\2100 bioanalyzer\2100 expert\assays\dsDNA\High Sensitivity DNA.xsy
Assay Class: High Sensitivity DNA Assay
Version: 1.03
Assay Comments: Copyright © 2003-2010 Agilent Technologies

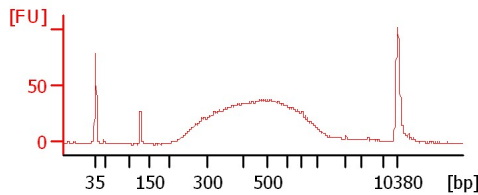
Chip Information:

Chip Lot #:
Reagent Kit Lot #:
Chip Comments:

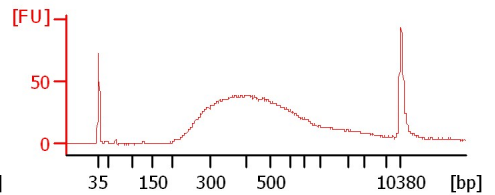
WPO 12A ChIP-Seq Lib



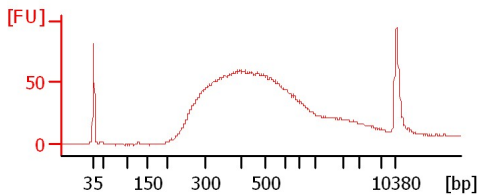
WPO 12B ChIP-Seq Lib



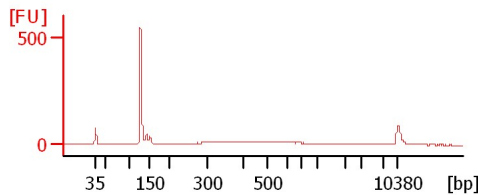
WPO 12C ChIP-Seq Lib



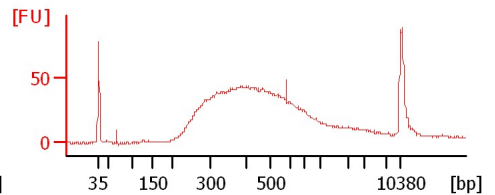
WPO 12D ChIP-Seq Lib



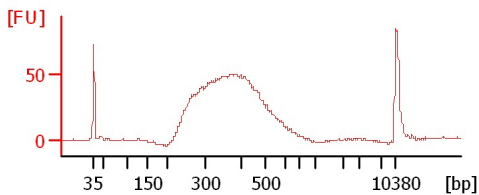
WPO 13A ChIP-Seq Lib



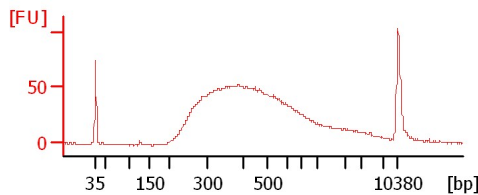
WPO 13B ChIP-Seq Lib



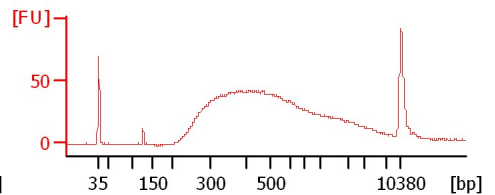
WPO 13C ChIP-Seq Lib



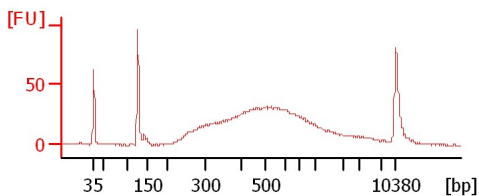
WPO 13D ChIP-Seq Lib



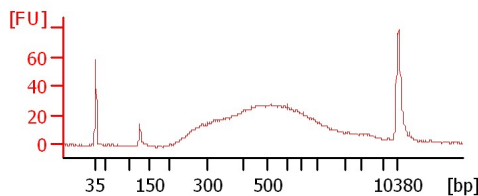
WPO 12 A-2 ChIP-Seq Lib



WPO 13 A-2 ChIP-Seq Lib



WPO 13 A-3 ChIP-Seq Lib



Assay Class: High Sensitivity DNA Assay
Data Path: C:\...ents and Settings\Bioanalyzer\2012-11-20\2012-11-20_004.xad

Created: 11/20/2012 3:52:16 PM
Modified: 11/20/2012 4:45:57 PM

Electrophoresis File Run Summary (Chip Summary)

Sample Name	Sample Comment	Rest. Digest	Status	Observation	Result Label	Result Color
WPO 12A ChIP-Seq Lib		<input type="checkbox"/>	✓			
WPO 12B ChIP-Seq Lib		<input type="checkbox"/>	✓			
WPO 12C ChIP-Seq Lib		<input type="checkbox"/>	✓			
WPO 12D ChIP-Seq Lib		<input type="checkbox"/>	✓			
WPO 13A ChIP-Seq Lib		<input type="checkbox"/>	✓			
WPO 13B ChIP-Seq Lib		<input type="checkbox"/>	✓			
WPO 13C ChIP-Seq Lib		<input type="checkbox"/>	✓			
WPO 13D ChIP-Seq Lib		<input type="checkbox"/>	✓			
WPO 12 A-2 ChIP-Seq Lib		<input type="checkbox"/>	✓			
WPO 13 A-2 ChIP-Seq Lib		<input type="checkbox"/>	✓			
WPO 13 A-3 ChIP-Seq Lib		<input type="checkbox"/>	✓			
Ladder		<input type="checkbox"/>	✓			

Chip Lot #

Reagent Kit Lot #

Chip Comments :

Assay Class: High Sensitivity DNA Assay
Data Path: C:\...ents and Settings\Bioanalyzer\2012-11-20\2012-11-20_004.xad

Created: 11/20/2012 3:52:16 PM
Modified: 11/20/2012 4:45:57 PM

Electrophoresis Assay Details

General Analysis Settings

Number of Available Sample and Ladder Wells (Max.) : 12
Minimum Visible Range [s] : 32
Maximum Visible Range [s] : 138
Start Analysis Time Range [s] : 33
End Analysis Time Range [s] : 137.5
Ladder Concentration [pg/μl] : 1950
Uses Standard Area for Ladder Fragments
Lower Marker Concentration [pg/μl] : 125
Upper Marker Concentration [pg/μl] : 75
Used Upper Marker for Quantitation
Standard Curve Fit is Point to Point
Show Data Aligned to Lower and Upper Marker

Integrator Settings

Integration Start Time [s] : 33.05
Integration End Time [s] : 137
Slope Threshold : 0.8
Height Threshold [FU] : 5
Area Threshold : 0.1
Width Threshold [s] : 0.6
Baseline Plateau [s] : 0.5

Filter Settings

Filter Width [s] : 0.5
Polynomial Order : 4

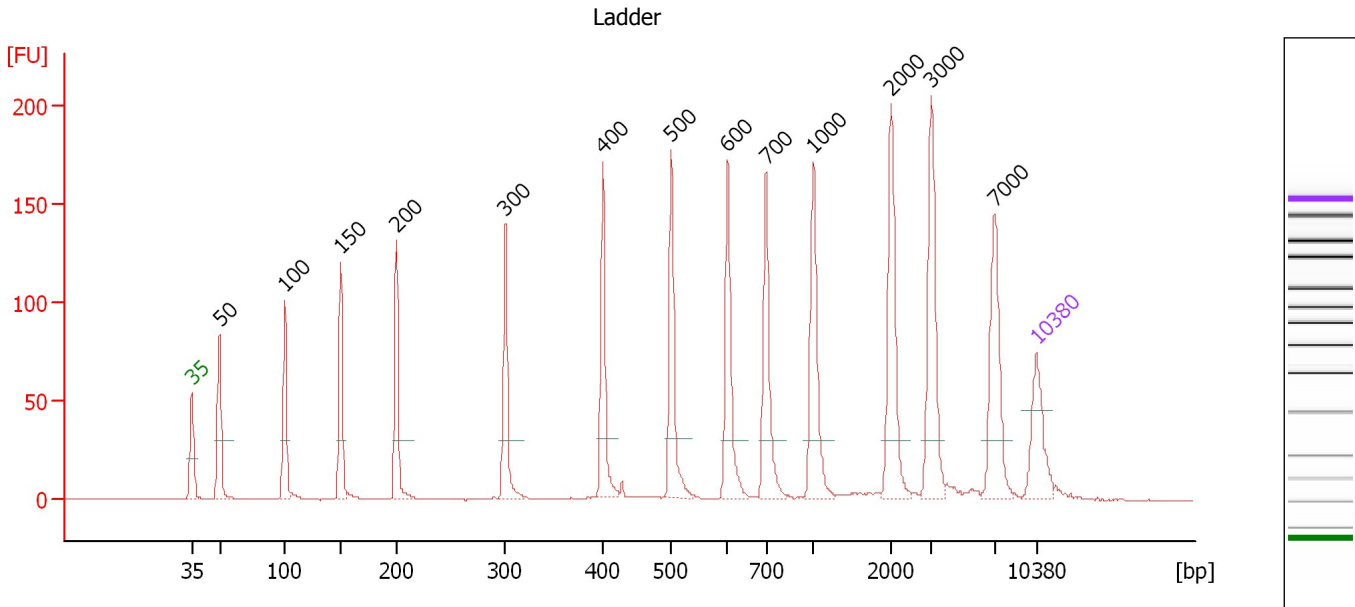
Ladder

Ladder Peak	Size	Area
1	35	160
2	50	210
3	100	208
4	150	221
5	200	242
6	300	270
7	400	305
8	500	306
9	600	336
10	700	321
11	1000	366
12	2000	413
13	3000	411
14	7000	400
15	10380	214

Assay Class: High Sensitivity DNA Assay
 Data Path: C:\...ents and Settings\Bioanalyzer\2012-11-20\2012-11-20_004.xad

Created: 11/20/2012 3:52:16 PM
 Modified: 11/20/2012 4:45:57 PM

Electropherogram Summary



Overall Results for Ladder

Noise: 0.2

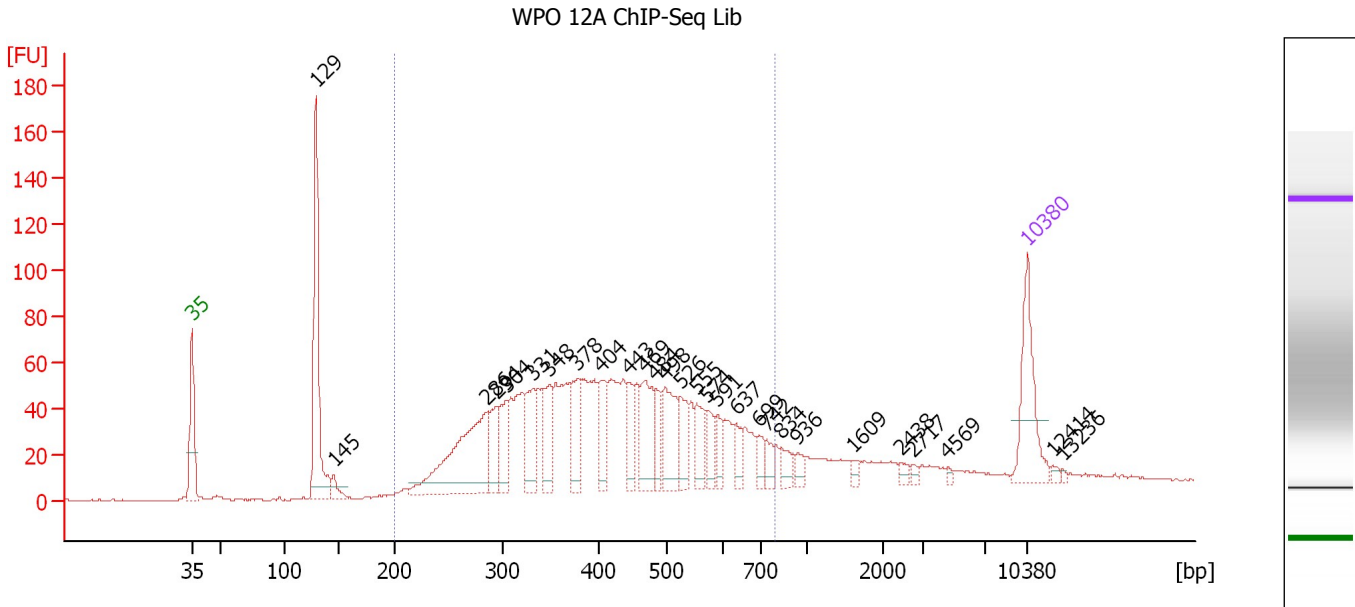
Peak table for Ladder

Peak	Size [bp]	Conc. [pg/μl]	Molarity [pmol/l]	Observations
1	35	125.00	5,411.3	Lower Marker
2	50	150.00	4,545.5	Ladder Peak
3	100	150.00	2,272.7	Ladder Peak
4	150	150.00	1,515.2	Ladder Peak
5	200	150.00	1,136.4	Ladder Peak
6	300	150.00	757.6	Ladder Peak
7	400	150.00	568.2	Ladder Peak
8	500	150.00	454.5	Ladder Peak
9	600	150.00	378.8	Ladder Peak
10	700	150.00	324.7	Ladder Peak
11	1,000	150.00	227.3	Ladder Peak
12	2,000	150.00	113.6	Ladder Peak
13	3,000	150.00	75.8	Ladder Peak
14	7,000	150.00	32.5	Ladder Peak
15	10,380	75.00	10.9	Upper Marker

Assay Class: High Sensitivity DNA Assay
 Data Path: C:\...ents and Settings\Bioanalyzer\2012-11-20\2012-11-20_004.xad

Created: 11/20/2012 3:52:16 PM
 Modified: 11/20/2012 4:45:57 PM

Electropherogram Summary Continued ...



Overall Results for sample 1 : WPO 12A ChIP-Seq Lib

Number of peaks found: 28 Corr. Area 1: 1,456.9
 Noise: 0.2

Peak table for sample 1 : WPO 12A ChIP-Seq Lib

Peak	Size [bp]	Conc. [pg/μl]	Molarity [pmol/l]	Observations
1	35	125.00	5,411.3	Lower Marker
2	129	240.10	2,822.5	
3	145	17.47	182.8	
4	286	218.98	1,160.2	
5	294	47.61	245.5	
6	304	55.60	276.9	
7	331	65.54	299.7	
8	348	61.70	268.3	
9	378	70.61	283.2	
10	404	51.18	192.0	
11	443	37.03	126.6	
12	469	76.52	247.4	
13	484	33.33	104.4	
14	498	73.54	223.8	
15	526	43.91	126.5	
16	555	40.11	109.6	
17	574	27.71	73.2	
18	591	20.59	52.8	
19	637	21.78	51.8	
20	699	16.92	36.7	
21	742	15.53	31.7	
22	834	19.44	35.3	
23	936	10.73	17.4	
24	1,609	7.11	6.7	
25	2,438	6.78	4.2	
26	2,717	4.16	2.3	

Assay Class: High Sensitivity DNA Assay
 Data Path: C:\...ents and Settings\Bioanalyzer\2012-11-20\2012-11-20_004.xad

Created: 11/20/2012 3:52:16 PM
 Modified: 11/20/2012 4:45:57 PM

Electropherogram Summary Continued ...

... Peak table for sample 1 : WPO 12A ChIP-Seq Lib

Peak	Size [bp]	Conc. [pg/μl]	Molarity [pmol/l]	Observations
27	4,569	3.02	1.0	
28	10,380	75.00	10.9	Upper Marker
29	12,414	0.00	0.0	
30	13,236	0.00	0.0	

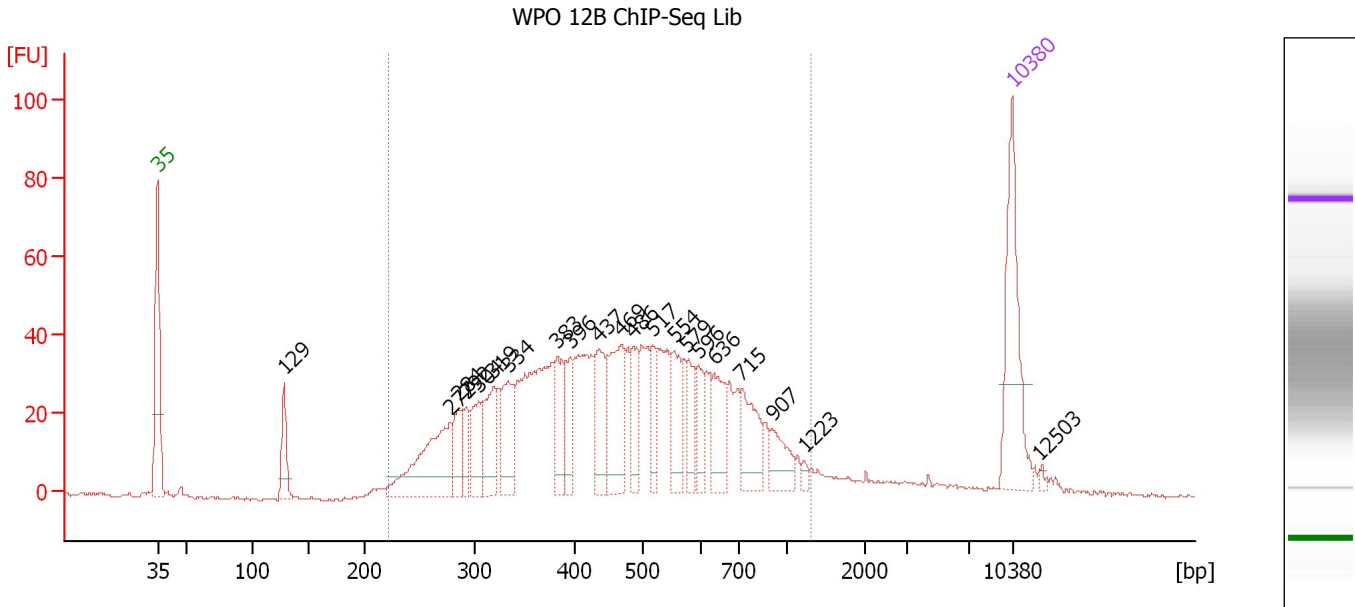
Region table for sample 1 : WPO 12A ChIP-Seq Lib

From [bp]	To [bp]	Average Size [bp]	Molarity [pmol/l]	Conc. [pg/μl]	Corr. Area	% of Total	Size distribution in CV [%]	Color
200	794	427	6,256.9	1,567.26	1,456.9	79	28.6	■

Assay Class: High Sensitivity DNA Assay
 Data Path: C:\...ents and Settings\Bioanalyzer\2012-11-20\2012-11-20_004.xad

Created: 11/20/2012 3:52:16 PM
 Modified: 11/20/2012 4:45:57 PM

Electropherogram Summary Continued ...



Overall Results for sample 2 : WPO 12B ChIP-Seq Lib

Number of peaks found: 21 Corr. Area 1: 1,168.4
 Noise: 0.5

Peak table for sample 2 : WPO 12B ChIP-Seq Lib

Peak	Size [bp]	Conc. [pg/μl]	Molarity [pmol/l]	Observations
1	35	125.00	5,411.3	Lower Marker
2	129	36.07	423.9	
3	277	108.32	591.7	
4	284	31.11	165.7	
5	292	26.58	138.2	
6	304	38.23	190.4	
7	319	51.36	244.1	
8	334	50.20	228.1	
9	383	42.12	166.5	
10	396	29.75	113.8	
11	437	50.68	175.9	
12	469	75.09	242.6	
13	486	31.99	99.8	
14	517	30.91	90.6	
15	554	39.37	107.7	
16	579	28.40	74.4	
17	596	23.33	59.3	
18	636	39.35	93.8	
19	715	44.60	94.5	
20	907	25.85	43.2	
21	1,223	3.78	4.7	
22	10,380	75.00	10.9	Upper Marker
23	12,503	0.00	0.0	

Assay Class: High Sensitivity DNA Assay
Data Path: C:\...ents and Settings\Bioanalyzer\2012-11-20\2012-11-20_004.xad

Created: 11/20/2012 3:52:16 PM
Modified: 11/20/2012 4:45:57 PM

Electropherogram Summary Continued ...

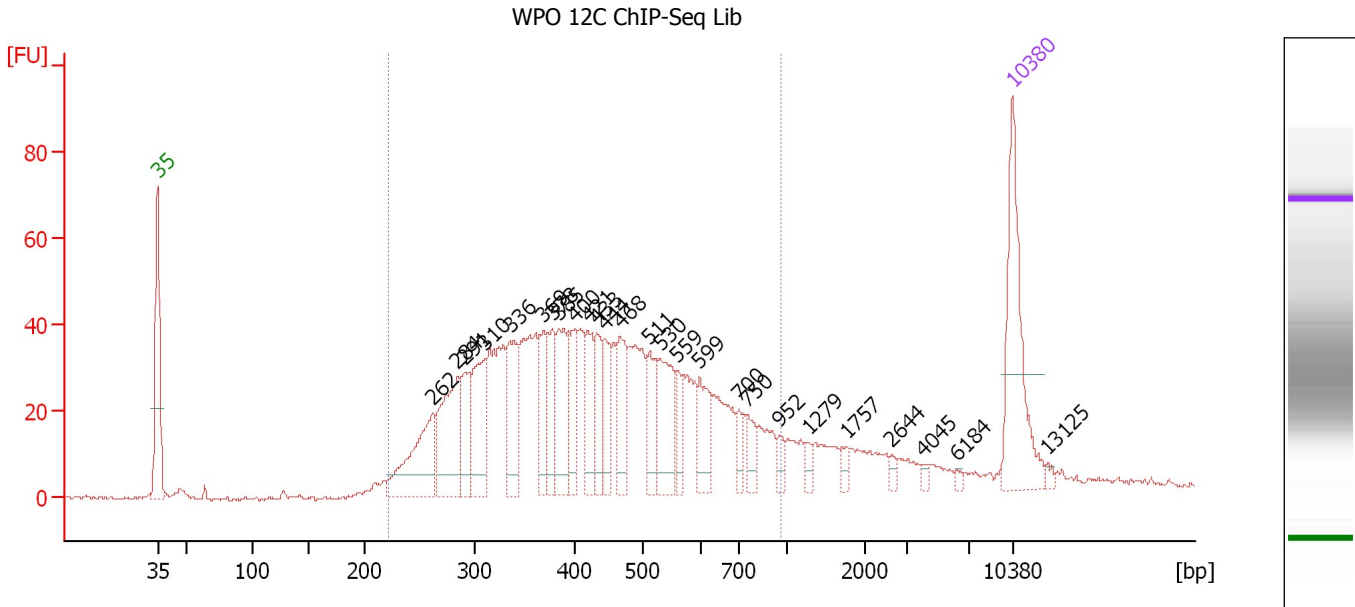
... Region table for sample 2 : WPO 12B ChIP-Seq Lib

From [bp]	To [bp]	Average Size [bp]	Molarity [pmol/l]	Conc. [pg/μl]	Corr. Area	% of Total	Size distribution in CV [%]	Color
222	1,297	490	4,600.7	1,260.27	1,168.4	93	36.9	■

Assay Class: High Sensitivity DNA Assay
 Data Path: C:\...ents and Settings\Bioanalyzer\2012-11-20\2012-11-20_004.xad

Created: 11/20/2012 3:52:16 PM
 Modified: 11/20/2012 4:45:57 PM

Electropherogram Summary Continued ...



Overall Results for sample 3 : WPO 12C ChIP-Seq Lib

Number of peaks found: 26 Corr. Area 1: 1,152.9
 Noise: 0.5

Peak table for sample 3 : WPO 12C ChIP-Seq Lib

Peak	Size [bp]	Conc. [pg/μl]	Molarity [pmol/l]	Observations
1	35	125.00	5,411.3	Lower Marker
2	262	81.45	471.3	
3	284	86.15	459.6	
4	291	34.56	180.1	
5	310	61.11	298.4	
6	336	53.97	243.3	
7	369	32.81	134.8	
8	378	34.87	139.7	
9	385	54.20	213.3	
10	400	38.16	144.6	
11	421	34.44	124.1	
12	433	31.41	110.0	
13	444	28.04	95.8	
14	468	42.10	136.2	
15	511	34.43	102.1	
16	530	51.75	147.9	
17	559	19.28	52.3	
18	599	30.79	77.8	
19	700	12.24	26.5	
20	750	15.56	31.4	
21	952	7.80	12.4	
22	1,279	5.88	7.0	
23	1,757	5.97	5.1	
24	2,644	4.06	2.3	
25	4,045	2.70	1.0	
26	6,184	2.32	0.6	


Assay Class: High Sensitivity DNA Assay
Data Path: C:\...ents and Settings\Bioanalyzer\2012-11-20\2012-11-20_004.xad

Created: 11/20/2012 3:52:16 PM
Modified: 11/20/2012 4:45:57 PM

Electropherogram Summary Continued ...**... Peak table for sample 3 : WPO 12C ChIP-Seq Lib**

Peak	Size [bp]	Conc. [pg/ μ l]	Molarity [pmol/l]	Observations
27	10,380	75.00	10.9	Upper Marker
28	13,125	0.00	0.0	

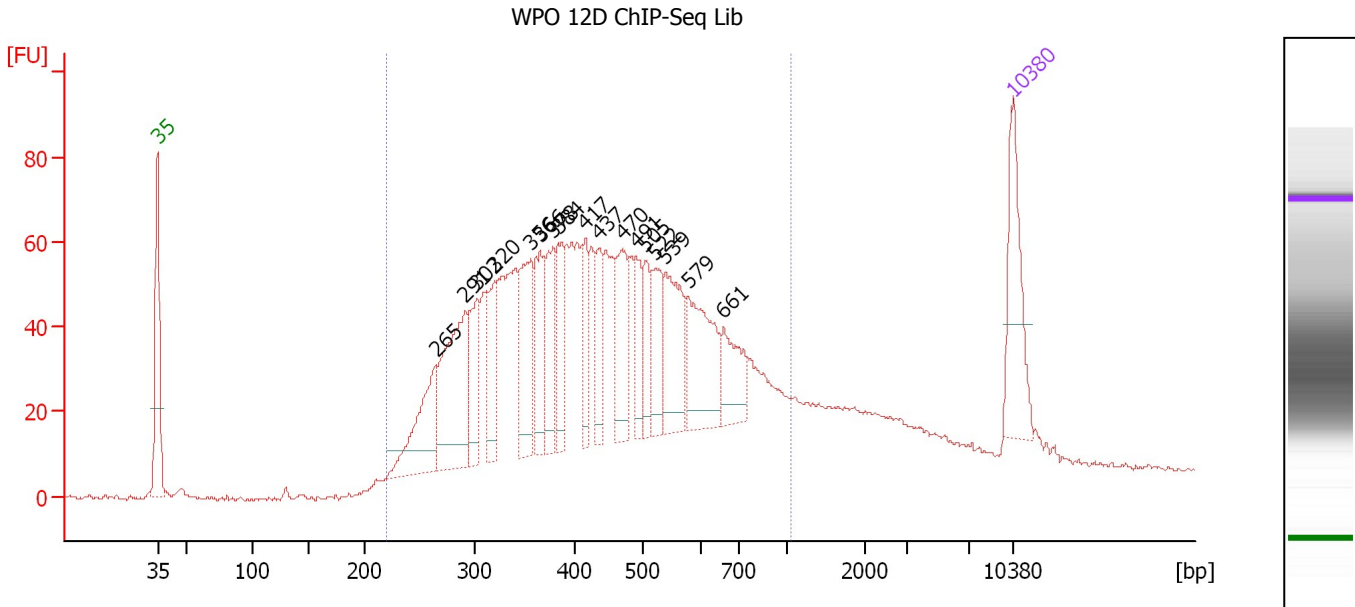
Region table for sample 3 : WPO 12C ChIP-Seq Lib

From [bp]	To [bp]	Average Size [bp]	Molarity [pmol/l]	Conc. [pg/ μ l]	Corr. Area	% of Total	Size distribution in CV [%]	Color
222	959	445	4,639.8	1,186.65	1,152.9	87	32.9	

Assay Class: High Sensitivity DNA Assay
 Data Path: C:\...ents and Settings\Bioanalyzer\2012-11-20\2012-11-20_004.xad

Created: 11/20/2012 3:52:16 PM
 Modified: 11/20/2012 4:45:57 PM

Electropherogram Summary Continued ...



Overall Results for sample 4 : WPO 12D ChIP-Seq Lib

Number of peaks found: 17 Corr. Area 1: 1,801.4
 Noise: 0.5

Peak table for sample 4 : WPO 12D ChIP-Seq Lib

Peak	Size [bp]	Conc. [pg/μl]	Molarity [pmol/l]	Observations
1	35	125.00	5,411.3	Lower Marker
2	265	108.76	622.7	
3	291	172.29	895.7	
4	302	67.64	339.1	
5	320	71.29	337.8	
6	356	99.52	423.4	
7	366	71.73	296.9	
8	378	75.02	300.4	
9	384	63.67	251.1	
10	417	48.37	175.8	
11	437	49.42	171.4	
12	470	73.04	235.2	
13	491	40.35	124.6	
14	505	38.45	115.4	
15	522	55.41	160.8	
16	539	92.78	260.7	
17	579	103.78	271.7	
18	661	55.82	128.0	
19	10,380	75.00	10.9	Upper Marker

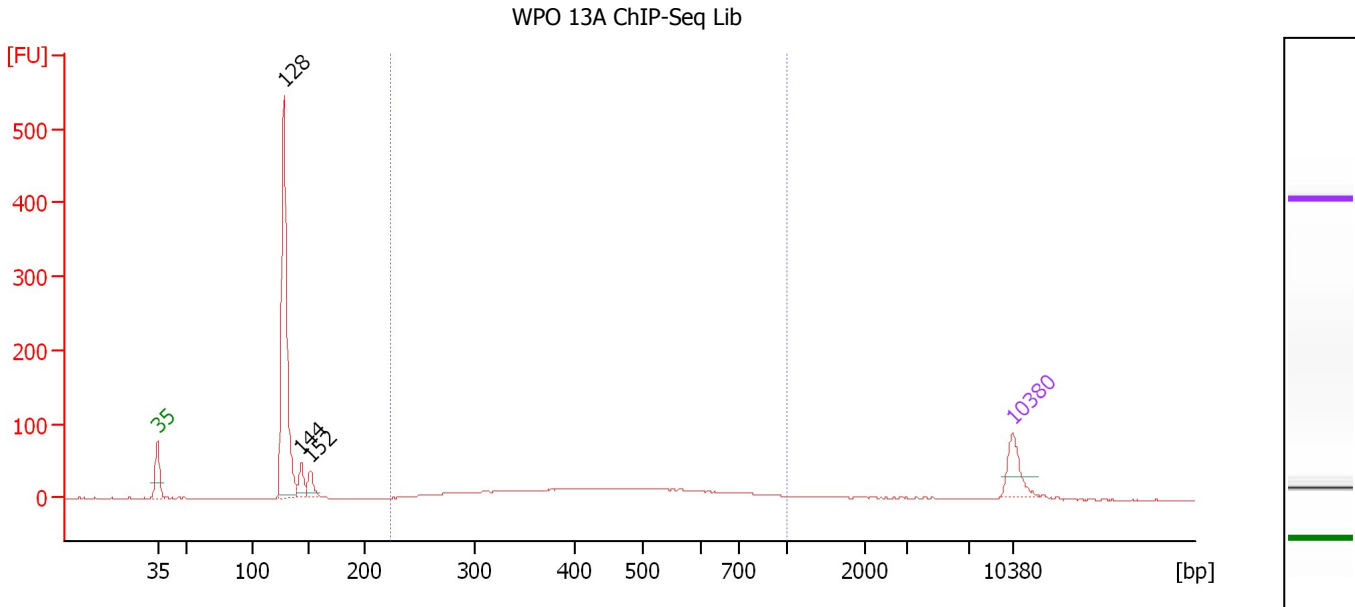
Region table for sample 4 : WPO 12D ChIP-Seq Lib

From [bp]	To [bp]	Average Size [bp]	Molarity [pmol/l]	Conc. [pg/μl]	Corr. Area	% of Total	Size distribution in CV [%]	Color
219	1,040	461	8,823.9	2,305.91	1,801.4	86	34.8	Blue

Assay Class: High Sensitivity DNA Assay
 Data Path: C:\...ents and Settings\Bioanalyzer\2012-11-20\2012-11-20_004.xad

Created: 11/20/2012 3:52:16 PM
 Modified: 11/20/2012 4:45:57 PM

Electropherogram Summary Continued ...



Overall Results for sample 5 : WPO 13A ChIP-Seq Lib

Number of peaks found: 3 Corr. Area 1: 427.6
 Noise: 0.6

Peak table for sample 5 : WPO 13A ChIP-Seq Lib

Peak	Size [bp]	Conc. [pg/μl]	Molarity [pmol/l]	Observations
1	35	125.00	5,411.3	Lower Marker
2	128	914.22	10,798.2	
3	144	69.64	734.2	
4	152	58.70	585.3	
5	10,380	75.00	10.9	Upper Marker

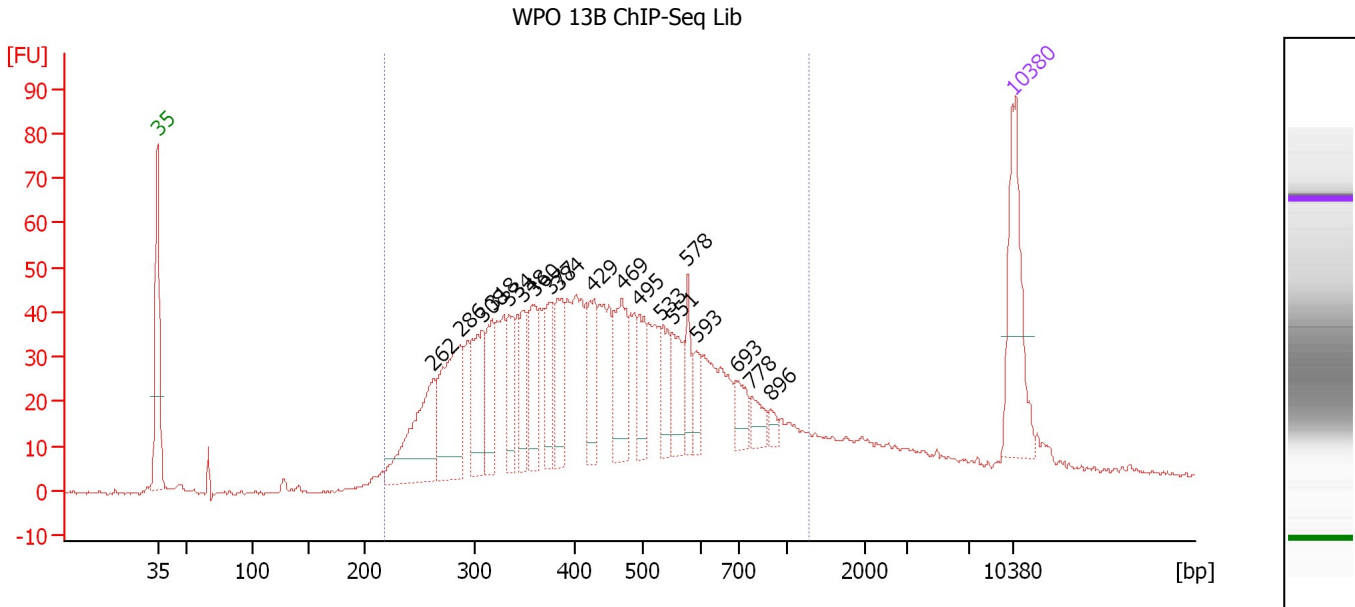
Region table for sample 5 : WPO 13A ChIP-Seq Lib

From [bp]	To [bp]	Average Size [bp]	Molarity [pmol/l]	Conc. [pg/μl]	Corr. Area	% of Total	Size distribution in CV [%]	Color
223	1,000	472	1,914.3	516.14	427.6	38	33.1	Blue

Assay Class: High Sensitivity DNA Assay
 Data Path: C:\...ents and Settings\Bioanalyzer\2012-11-20\2012-11-20_004.xad

Created: 11/20/2012 3:52:16 PM
 Modified: 11/20/2012 4:45:57 PM

Electropherogram Summary Continued ...



Overall Results for sample 6 : WPO 13B ChIP-Seq Lib

Number of peaks found: 19 Corr. Area 1: 1,374.5
 Noise: 0.4

Peak table for sample 6 : WPO 13B ChIP-Seq Lib

Peak	Size [bp]	Conc. [pg/μl]	Molarity [pmol/l]	Observations
1	35	125.00	5,411.3	Lower Marker
2	262	113.72	657.1	
3	286	120.48	637.8	
4	308	70.39	346.5	
5	318	52.08	248.2	
6	334	39.88	180.9	
7	348	39.31	171.0	
8	360	56.97	239.7	
9	377	46.66	187.4	
10	384	46.95	185.3	
11	429	50.36	178.0	
12	469	68.26	220.3	
13	495	37.26	114.1	
14	533	32.09	91.2	
15	551	37.54	103.2	
16	578	25.22	66.1	
17	593	19.19	49.0	
18	693	21.31	46.6	
19	778	16.54	32.2	
20	896	7.16	12.1	
21	10,380	75.00	10.9	Upper Marker

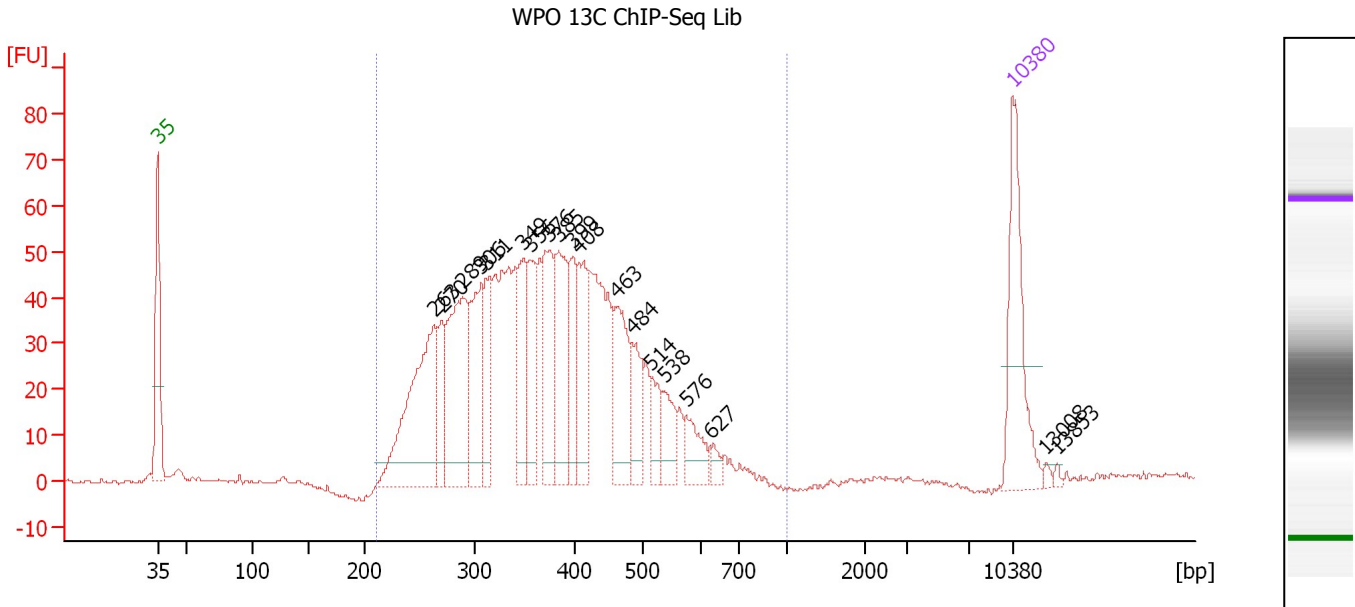
Region table for sample 6 : WPO 13B ChIP-Seq Lib

From [bp]	To [bp]	Average Size [bp]	Molarity [pmol/l]	Conc. [pg/μl]	Corr. Area	% of Total	Size distribution in CV [%]	Color
217	1,288	466	6,414.6	1,652.69	1,374.5	88	39.8	Blue

Assay Class: High Sensitivity DNA Assay
 Data Path: C:\...ents and Settings\Bioanalyzer\2012-11-20\2012-11-20_004.xad

Created: 11/20/2012 3:52:16 PM
 Modified: 11/20/2012 4:45:57 PM

Electropherogram Summary Continued ...



Overall Results for sample 7 : WPO 13C ChIP-Seq Lib

Number of peaks found: 19 Corr. Area 1: 1,247.6
 Noise: 0.4

Peak table for sample 7 : WPO 13C ChIP-Seq Lib

Peak	Size [bp]	Conc. [pg/μl]	Molarity [pmol/l]	Observations
1	35	125.00	5,411.3	Lower Marker
2	263	177.91	1,025.4	
3	270	43.73	245.5	
4	289	141.08	740.4	
5	306	83.74	414.7	
6	311	53.97	262.6	
7	349	65.04	282.3	
8	356	56.63	241.2	
9	376	78.29	315.9	
10	385	83.10	327.4	
11	399	48.16	182.9	
12	408	63.35	235.3	
13	463	74.71	244.7	
14	484	38.19	119.5	
15	514	26.50	78.1	
16	538	29.61	83.4	
17	576	28.23	74.3	
18	627	8.11	19.6	
19	10,380	75.00	10.9	Upper Marker
20	13,008	0.00	0.0	
21	13,853	0.00	0.0	

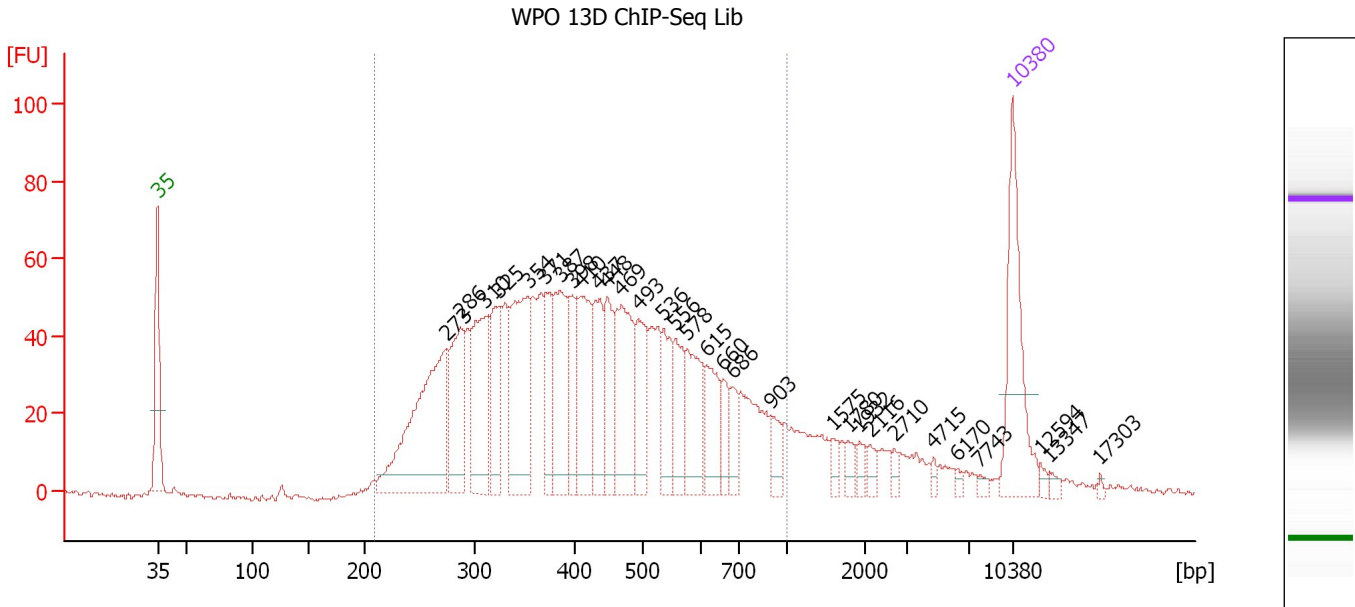
Region table for sample 7 : WPO 13C ChIP-Seq Lib

From [bp]	To [bp]	Average Size [bp]	Molarity [pmol/l]	Conc. [pg/μl]	Corr. Area	% of Total	Size distribution in CV [%]	Color
211	999	381	6,227.4	1,437.21	1,247.6	98	25.2	Blue

Assay Class: High Sensitivity DNA Assay
 Data Path: C:\...ents and Settings\Bioanalyzer\2012-11-20\2012-11-20_004.xad

Created: 11/20/2012 3:52:16 PM
 Modified: 11/20/2012 4:45:57 PM

Electropherogram Summary Continued ...



Overall Results for sample 8 : WPO 13D ChIP-Seq Lib

Number of peaks found: 31 Corr. Area 1: 1,667.0
 Noise: 0.7

Peak table for sample 8 : WPO 13D ChIP-Seq Lib

Peak	Size [bp]	Conc. [pg/μl]	Molarity [pmol/l]	Observations
1	35	125.00	5,411.3	Lower Marker
2	273	195.18	1,081.4	
3	286	83.09	439.5	
4	310	103.64	506.4	
5	325	65.57	306.1	
6	354	120.61	516.2	
7	371	46.85	191.1	
8	387	87.14	341.0	
9	398	43.52	165.7	
10	410	75.77	280.1	
11	437	55.53	192.7	
12	448	51.37	173.8	
13	469	86.68	279.9	
14	493	52.45	161.1	
15	536	41.57	117.6	
16	556	41.93	114.2	
17	578	53.55	140.3	
18	615	40.25	99.1	
19	660	21.25	48.8	
20	686	20.13	44.5	
21	903	16.13	27.1	
22	1,575	8.02	7.7	
23	1,780	8.35	7.1	
24	1,932	7.44	5.8	
25	2,116	7.74	5.5	
26	2,710	5.43	3.0	

Assay Class: High Sensitivity DNA Assay
 Data Path: C:\...ents and Settings\Bioanalyzer\2012-11-20\2012-11-20_004.xad


Created: 11/20/2012 3:52:16 PM
 Modified: 11/20/2012 4:45:57 PM

Electropherogram Summary Continued ...

... Peak table for sample 8 : WPO 13D ChIP-Seq Lib

Peak	Size [bp]	Conc. [pg/μl]	Molarity [pmol/l]	Observations
27	4,715	3.82	1.2	
28	6,170	3.37	0.8	
29	7,743	3.39	0.7	
30	10,380	75.00	10.9	Upper Marker
31	12,594	0.00	0.0	
32	13,347	0.00	0.0	
33	17,303	0.00	0.0	

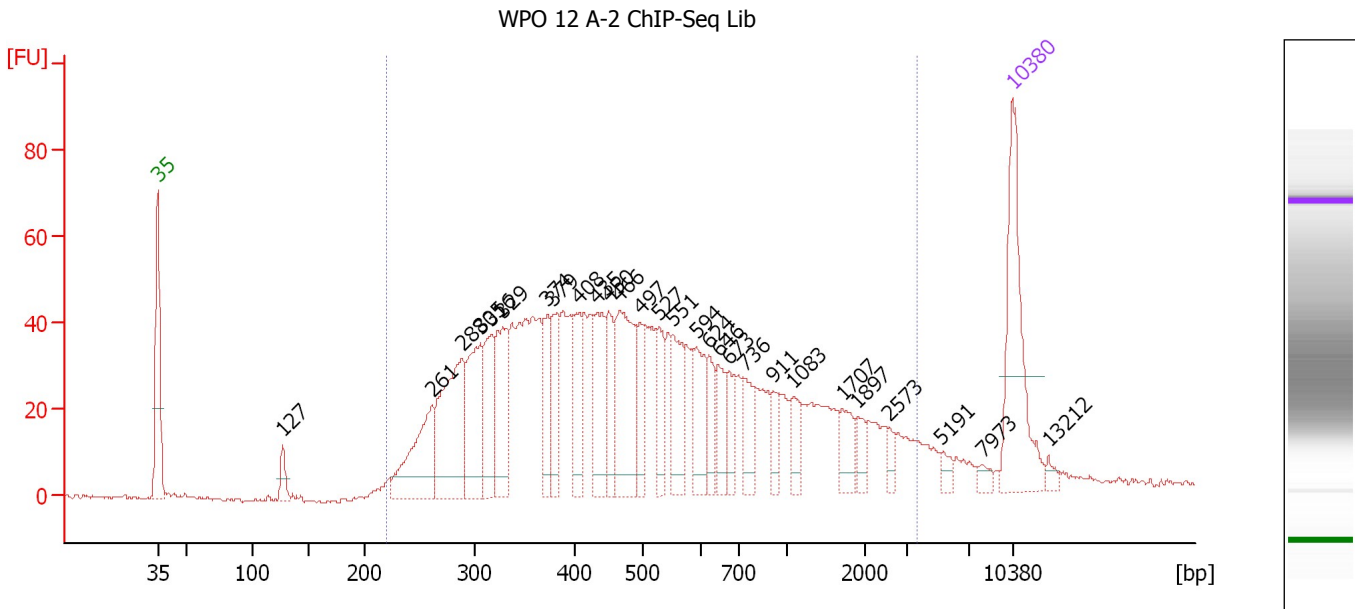
Region table for sample 8 : WPO 13D ChIP-Seq Lib

From [bp]	To [bp]	Average Size [bp]	Molarity [pmol/l]	Conc. [pg/μl]	Corr. Area	% of Total	Size distribution in CV [%]	Color
209	1,000	444	6,469.9	1,623.03	1,667.0	88	35.3	

Assay Class: High Sensitivity DNA Assay
 Data Path: C:\...ents and Settings\Bioanalyzer\2012-11-20\2012-11-20_004.xad

Created: 11/20/2012 3:52:16 PM
 Modified: 11/20/2012 4:45:57 PM

Electropherogram Summary Continued ...



Overall Results for sample 9 : WPO 12 A-2 ChIP-Seq Lib

Number of peaks found: 28 Corr. Area 1: 1,515.2
 Noise: 0.4

Peak table for sample 9 : WPO 12 A-2 ChIP-Seq Lib

Peak	Size [bp]	Conc. [pg/μl]	Molarity [pmol/l]	Observations
1	35	125.00	5,411.3	Lower Marker
2	127	14.60	173.6	
3	261	75.35	437.4	
4	288	113.55	597.2	
5	305	77.35	383.8	
6	316	49.17	235.6	
7	329	63.86	294.2	
8	374	35.13	142.5	
9	379	37.85	151.3	
10	408	38.45	142.9	
11	435	52.59	183.4	
12	450	34.24	115.3	
13	466	88.28	286.8	
14	497	29.25	89.2	
15	527	30.99	89.1	
16	551	39.38	108.3	
17	594	39.16	99.9	
18	624	21.28	51.6	
19	646	24.31	57.0	
20	673	19.33	43.5	
21	736	23.92	49.3	
22	911	13.35	22.2	
23	1,083	16.92	23.7	
24	1,707	16.99	15.1	
25	1,897	10.86	8.7	
26	2,573	6.40	3.8	

Assay Class: High Sensitivity DNA Assay
 Data Path: C:\...ents and Settings\Bioanalyzer\2012-11-20\2012-11-20_004.xad


Created: 11/20/2012 3:52:16 PM
 Modified: 11/20/2012 4:45:57 PM

Electropherogram Summary Continued ...

... Peak table for sample 9 : WPO 12 A-2 ChIP-Seq Lib

Peak	Size [bp]	Conc. [pg/μl]	Molarity [pmol/l]	Observations
27	5,191	5.95	1.7	
28	7,973	4.68	0.9	
29	10,380	75.00	10.9	Upper Marker
30	13,212	0.00	0.0	

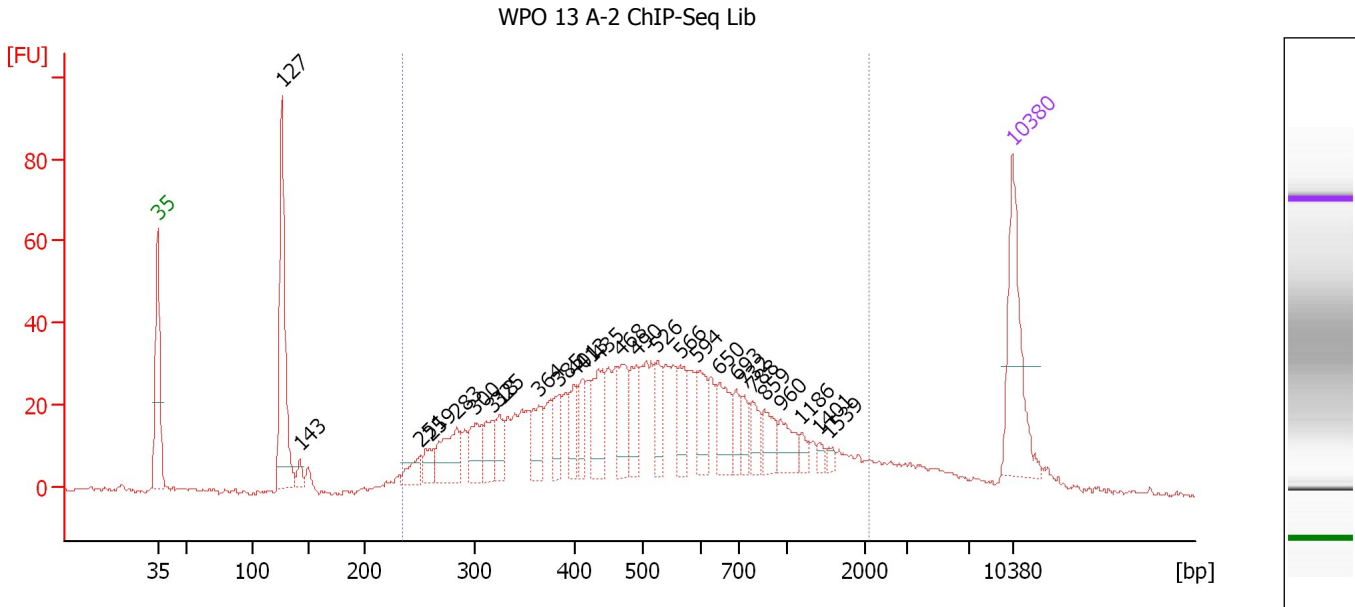
Region table for sample 9 : WPO 12 A-2 ChIP-Seq Lib

From [bp]	To [bp]	Average Size [bp]	Molarity [pmol/l]	Conc. [pg/μl]	Corr. Area	% of Total	Size distribution in CV [%]	Color
220	3,653	668	5,038.2	1,424.07	1,515.2	95	84.3	

Assay Class: High Sensitivity DNA Assay
 Data Path: C:\...ents and Settings\Bioanalyzer\2012-11-20\2012-11-20_004.xad

Created: 11/20/2012 3:52:16 PM
 Modified: 11/20/2012 4:45:57 PM

Electropherogram Summary Continued ...



Overall Results for sample 10 : WPO 13 A-2 ChIP-Seq Lib

Number of peaks found: 27 Corr. Area 1: 991.2
 Noise: 0.5

Peak table for sample 10 : WPO 13 A-2 ChIP-Seq Lib

Peak	Size [bp]	Conc. [pg/μl]	Molarity [pmol/l]	Observations
1	35	125.00	5,411.3	Lower Marker
2	127	174.28	2,085.2	
3	143	11.19	119.0	
4	251	19.10	115.4	
5	259	18.85	110.3	
6	283	54.54	291.5	
7	300	33.31	168.0	
8	318	28.13	134.0	
9	325	23.14	108.0	
10	364	31.95	133.0	
11	385	26.53	104.3	
12	401	24.32	91.9	
13	413	25.59	93.9	
14	435	49.73	173.0	
15	468	39.09	126.4	
16	490	33.59	103.8	
17	526	26.75	77.1	
18	566	33.47	89.6	
19	594	33.47	85.4	
20	650	38.40	89.5	
21	693	18.75	41.0	
22	732	15.87	32.9	
23	788	20.02	38.5	
24	859	22.57	39.8	
25	960	22.48	35.5	
26	1,186	8.00	10.2	

Assay Class: High Sensitivity DNA Assay
 Data Path: C:\...ents and Settings\Bioanalyzer\2012-11-20\2012-11-20_004.xad

Created: 11/20/2012 3:52:16 PM
 Modified: 11/20/2012 4:45:57 PM

Electropherogram Summary Continued ...

... Peak table for sample 10 : WPO 13 A-2 ChIP-Seq Lib

Peak	Size [bp]	Conc. [pg/μl]	Molarity [pmol/l]	Observations
27	1,401	4.75	5.1	
28	1,539	4.43	4.4	
29	10,380	75.00	10.9	Upper Marker

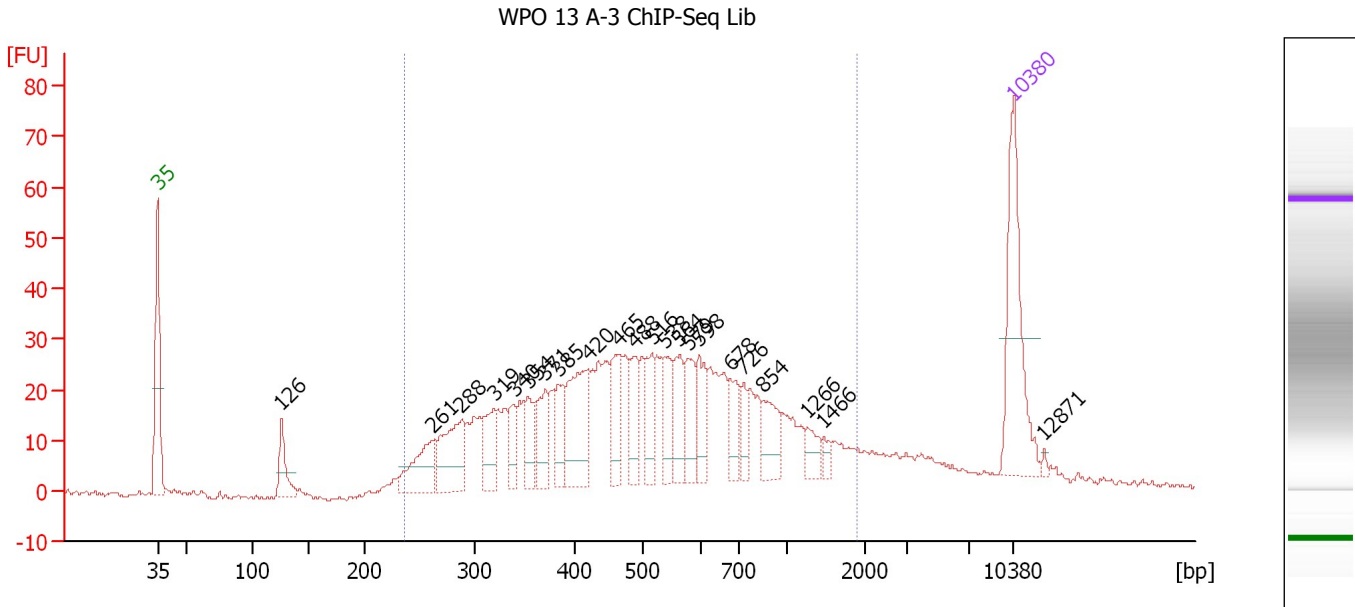
Region table for sample 10 : WPO 13 A-2 ChIP-Seq Lib

From [bp]	To [bp]	Average Size [bp]	Molarity [pmol/l]	Conc. [pg/μl]	Corr. Area	% of Total	Size distribution in CV [%]	Color
235	2,083	598	4,297.3	1,271.14	991.2	81	57.8	■

Assay Class: High Sensitivity DNA Assay
 Data Path: C:\...ents and Settings\Bioanalyzer\2012-11-20\2012-11-20_004.xad

Created: 11/20/2012 3:52:16 PM
 Modified: 11/20/2012 4:45:57 PM

Electropherogram Summary Continued ...



Overall Results for sample 11 : WPO 13 A-3 ChIP-Seq Lib

Number of peaks found: 22 Corr. Area 1: 839.6
 Noise: 0.6


Peak table for sample 11 : WPO 13 A-3 ChIP-Seq Lib

Peak	Size [bp]	Conc. [pg/μl]	Molarity [pmol/l]	Observations
1	35	125.00	5,411.3	Lower Marker
2	126	32.83	393.5	
3	261	49.49	287.4	
4	288	61.59	324.3	
5	319	31.81	150.9	
6	340	21.69	96.8	
7	354	30.32	129.9	
8	371	32.00	130.6	
9	385	27.41	107.9	
10	420	71.62	258.1	
11	465	37.99	123.8	
12	488	29.06	90.3	
13	516	32.02	94.1	
14	538	30.56	86.1	
15	564	32.58	87.5	
16	579	31.18	81.6	
17	598	27.97	70.8	
18	678	23.55	52.6	
19	726	15.98	33.4	
20	854	27.89	49.5	
21	1,266	12.56	15.0	
22	1,466	5.76	6.0	
23	10,380	75.00	10.9	Upper Marker
24	12,871	0.00	0.0	

Assay Class: High Sensitivity DNA Assay
Data Path: C:\...ents and Settings\Bioanalyzer\2012-11-20\2012-11-20_004.xad

Created: 11/20/2012 3:52:16 PM
Modified: 11/20/2012 4:45:57 PM

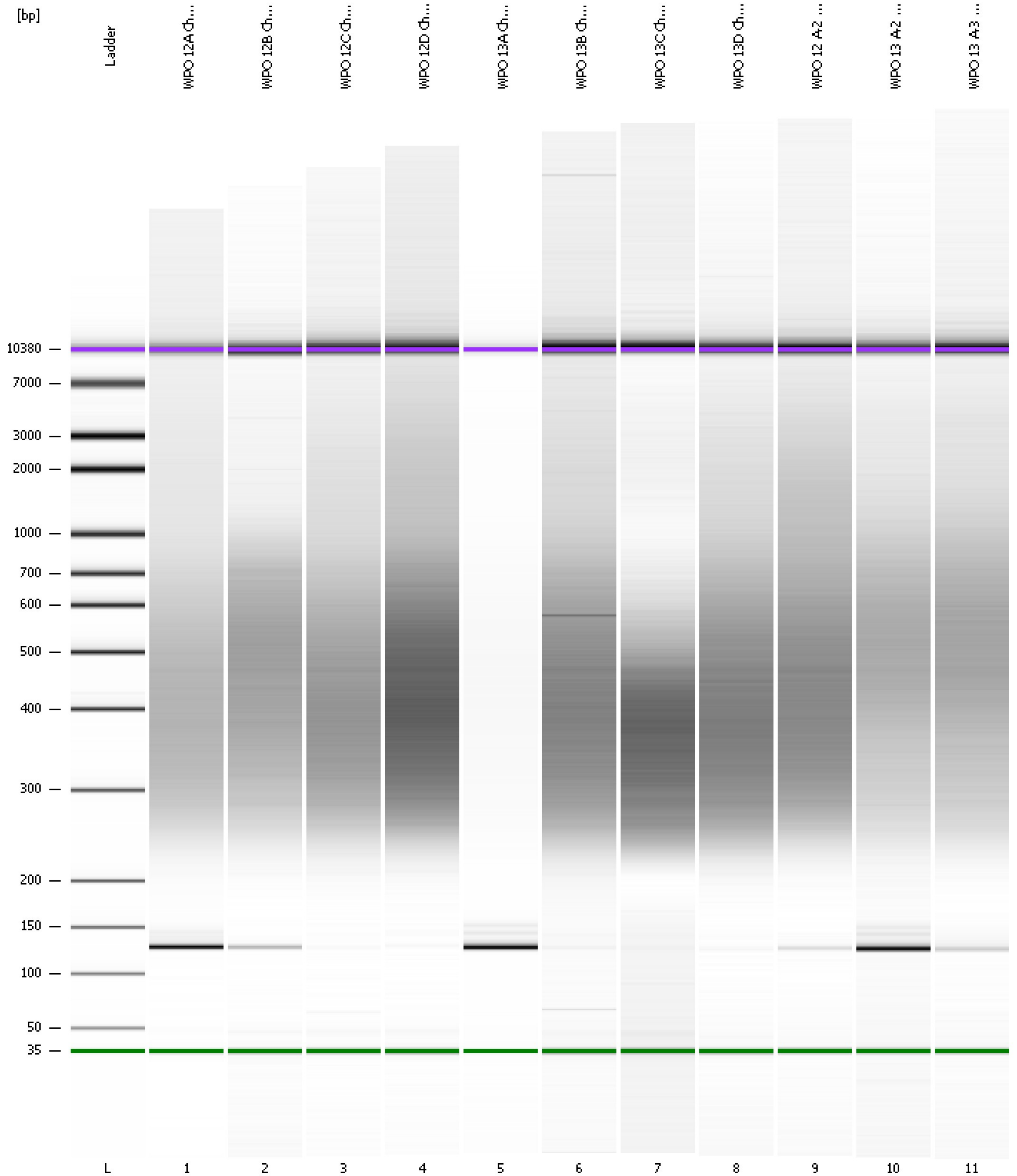
Electropherogram Summary Continued ...**... Region table for sample 11 : WPO 13 A-3 ChIP-Seq Lib**

From [bp]	To [bp]	Average Size [bp]	Molarity [pmol/l]	Conc. [pg/μl]	Corr. Area	% of Total	Size distribution in CV [%]	Co lor
236	1,899	582	3,611.1	1,060.11	839.6	88	54.4	

Assay Class: High Sensitivity DNA Assay
Data Path: C:\...ents and Settings\Bioanalyzer\2012-11-20\2012-11-20_004.xad

Created: 11/20/2012 3:52:16 PM
Modified: 11/20/2012 4:45:57 PM

Gel Image



Assay Class: High Sensitivity DNA Assay
 Data Path: C:\...ents and Settings\Bioanalyzer\2012-11-20\2012-11-20_004.xad

Created: 11/20/2012 3:52:16 PM
 Modified: 11/20/2012 4:45:57 PM

Run Logbook

Description	Number	Source	Category	Sub Category	Time	Time Zone	User	Host
Run ended on port 1 (Number of wells acquired: 12)		Instrument	Run		11/20/2012 4:33:34 PM	(GMT --08:00) Pacific Standard Time	UC Davis	D8XSMGH1
Run started on port 1 (File: C:\Documents and Settings\Bioanalyzer\2012-11-20\2012-11-20_004.xad)		Instrument	Run		11/20/2012 3:52:22 PM	(GMT --08:00) Pacific Standard Time	UC Davis	D8XSMGH1
Product Number : G2938B		Instrument	Run		11/20/2012 3:52:22 PM	(GMT --08:00) Pacific Standard Time	UC Davis	D8XSMGH1
Name :		Instrument	Run		11/20/2012 3:52:22 PM	(GMT --08:00) Pacific Standard Time	UC Davis	D8XSMGH1
Vendor : Agilent Technologies		Instrument	Run		11/20/2012 3:52:22 PM	(GMT --08:00) Pacific Standard Time	UC Davis	D8XSMGH1
Serial# : DE13701086		Instrument	Run		11/20/2012 3:52:22 PM	(GMT --08:00) Pacific Standard Time	UC Davis	D8XSMGH1
Firmware : C.01.069		Instrument	Run		11/20/2012 3:52:22 PM	(GMT --08:00) Pacific Standard Time	UC Davis	D8XSMGH1
Cartridge : Electrode		Instrument	Run		11/20/2012 3:52:22 PM	(GMT --08:00) Pacific Standard Time	UC Davis	D8XSMGH1