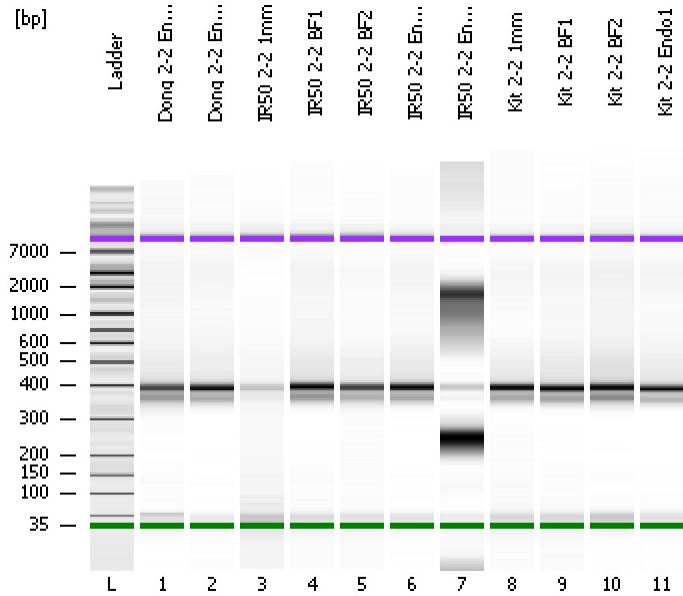


Assay Class: High Sensitivity DNA Assay  
Data Path: C:\...ents and Settings\Bioanalyzer\2012-11-21\2012-11-21\_001.xad

Created: 11/21/2012 10:14:04 AM  
Modified: 11/21/2012 10:59:27 AM

**Electrophoresis File Run Summary**



Instrument Information:

Instrument Name: DE13701086      Firmware: C.01.069  
Serial#: DE13701086      Type: G2938B

Assay Information:

Assay Origin Path: C:\Program Files\Agilent\2100 bioanalyzer\2100 expert\assays\dsDNA\High Sensitivity DNA.xsy  
Assay Class: High Sensitivity DNA Assay  
Version: 1.03  
Assay Comments: Copyright © 2003-2010 Agilent Technologies

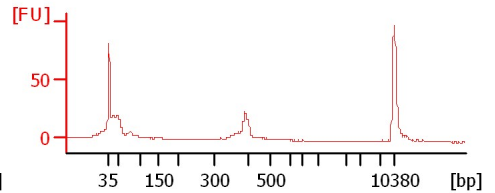
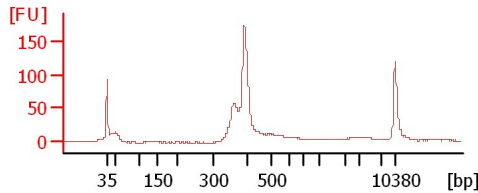
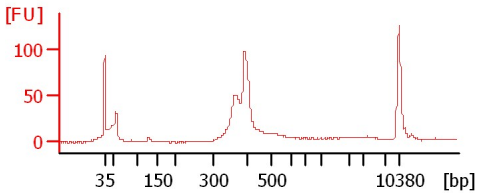
Chip Information:

Chip Lot #:   
Reagent Kit Lot #:   
Chip Comments:

**Dong 2-2 Endo1**

**Dong 2-2 Endo2**

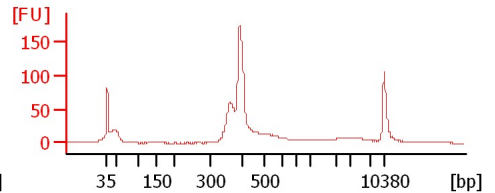
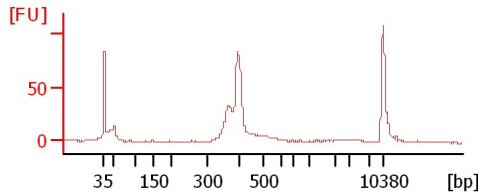
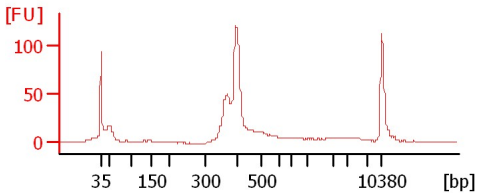
**IR50 2-2 1mm**



**IR50 2-2 BF1**

**IR50 2-2 BF2**

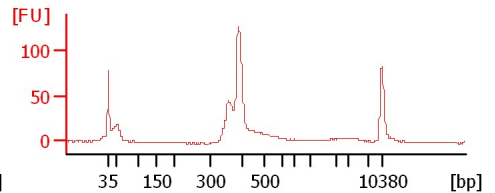
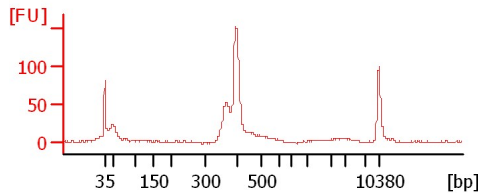
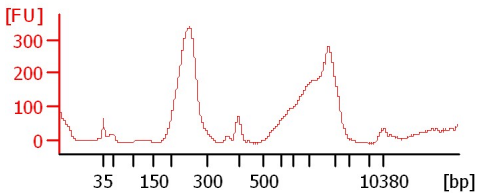
**IR50 2-2 Endo1**



**IR50 2-2 Endo2**

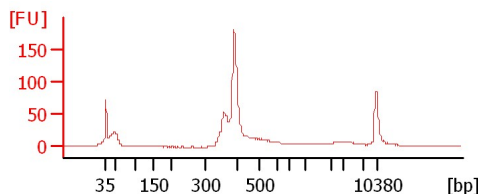
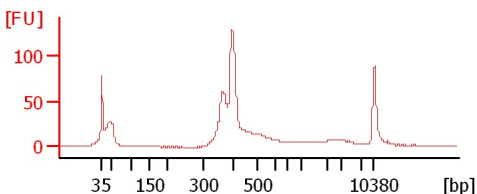
**Kit 2-2 1mm**

**Kit 2-2 BF1**



**Kit 2-2 BF2**

**Kit 2-2 Endo1**



Assay Class: High Sensitivity DNA Assay  
 Data Path: C:\...ents and Settings\Bioanalyzer\2012-11-21\2012-11-21\_001.xad

Created: 11/21/2012 10:14:04 AM  
 Modified: 11/21/2012 10:59:27 AM

**Electrophoresis File Run Summary (Chip Summary)**

Sample Name	Sample Comment	Rest. Digest	Status	Observation	Result Label	Result Color
Dong 2-2 Endo1		<input type="checkbox"/>	✓			
Dong 2-2 Endo2		<input type="checkbox"/>	✓			
IR50 2-2 1mm		<input type="checkbox"/>	✓			
IR50 2-2 BF1		<input type="checkbox"/>	✓			
IR50 2-2 BF2		<input type="checkbox"/>	✓			
IR50 2-2 Endo1		<input type="checkbox"/>	✓			
IR50 2-2 Endo2		<input type="checkbox"/>	✓			
Kit 2-2 1mm		<input type="checkbox"/>	✓			
Kit 2-2 BF1		<input type="checkbox"/>	✓			
Kit 2-2 BF2		<input type="checkbox"/>	✓			
Kit 2-2 Endo1		<input type="checkbox"/>	✓			
Ladder		<input type="checkbox"/>	✓			

**Chip Lot #**

**Reagent Kit Lot #**

**Chip Comments :**

Assay Class: High Sensitivity DNA Assay  
Data Path: C:\...ents and Settings\Bioanalyzer\2012-11-21\2012-11-21\_001.xad

Created: 11/21/2012 10:14:04 AM  
Modified: 11/21/2012 10:59:27 AM

**Electrophoresis Assay Details**

**General Analysis Settings**

Number of Available Sample and Ladder Wells (Max.) : 12  
Minimum Visible Range [s] : 32  
Maximum Visible Range [s] : 138  
Start Analysis Time Range [s] : 33  
End Analysis Time Range [s] : 137.5  
Ladder Concentration [pg/μl] : 1950  
Uses Standard Area for Ladder Fragments  
Lower Marker Concentration [pg/μl] : 125  
Upper Marker Concentration [pg/μl] : 75  
Used Upper Marker for Quantitation  
Standard Curve Fit is Point to Point  
Show Data Aligned to Lower and Upper Marker

**Integrator Settings**

Integration Start Time [s] : 33.05  
Integration End Time [s] : 137  
Slope Threshold : 0.8  
Height Threshold [FU] : 5  
Area Threshold : 0.1  
Width Threshold [s] : 0.6  
Baseline Plateau [s] : 0.5

**Filter Settings**

Filter Width [s] : 0.5  
Polynomial Order : 4

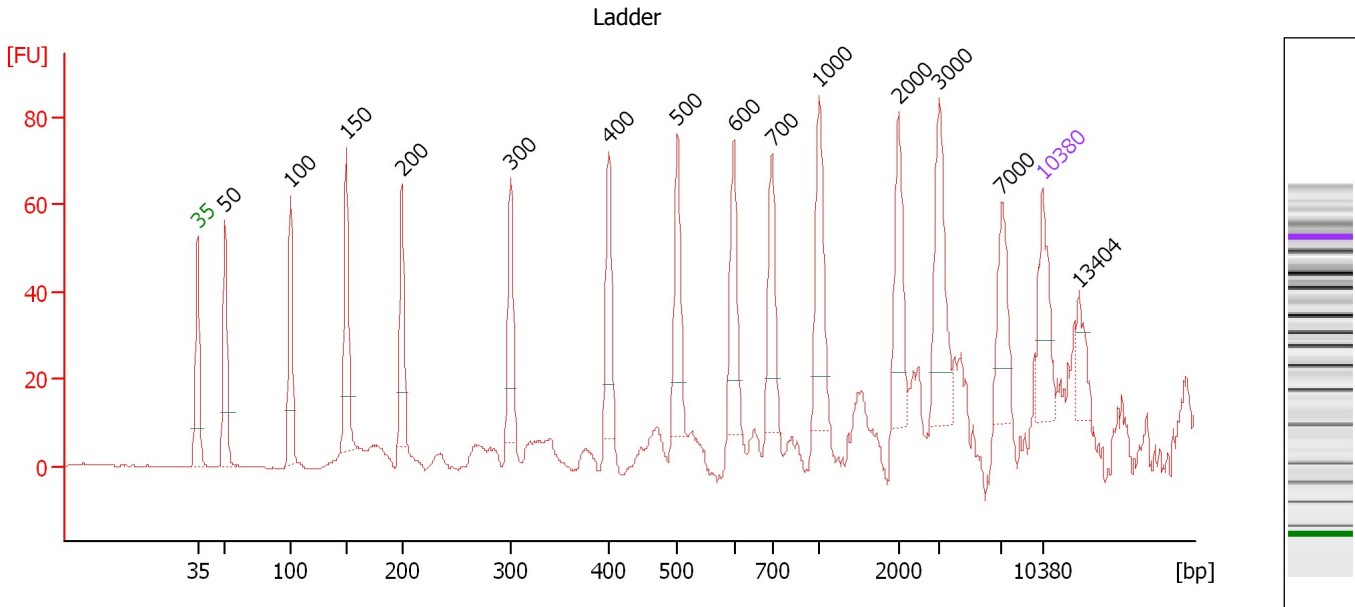
**Ladder**

Ladder Peak	Size	Area
1	35	160
2	50	210
3	100	208
4	150	221
5	200	242
6	300	270
7	400	305
8	500	306
9	600	336
10	700	321
11	1000	366
12	2000	413
13	3000	411
14	7000	400
15	10380	214

Assay Class: High Sensitivity DNA Assay  
 Data Path: C:\...ents and Settings\Bioanalyzer\2012-11-21\2012-11-21\_001.xad

Created: 11/21/2012 10:14:04 AM  
 Modified: 11/21/2012 10:59:27 AM

**Electropherogram Summary**



**Overall Results for Ladder**

Noise: 0.2

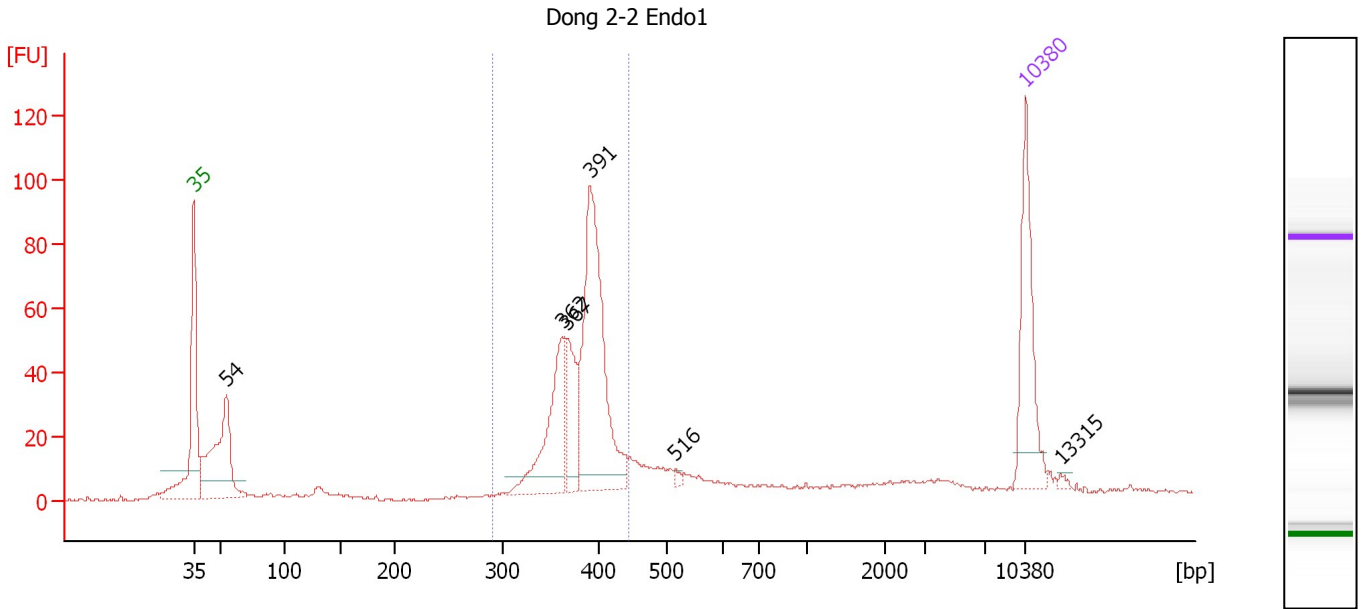
**Peak table for Ladder**

Peak	Size [bp]	Conc. [pg/μl]	Molarity [pmol/l]	Observations
1	35	125.00	5,411.3	Lower Marker
2	50	150.00	4,545.5	Ladder Peak
3	100	150.00	2,272.7	Ladder Peak
4	150	150.00	1,515.2	Ladder Peak
5	200	150.00	1,136.4	Ladder Peak
6	300	150.00	757.6	Ladder Peak
7	400	150.00	568.2	Ladder Peak
8	500	150.00	454.5	Ladder Peak
9	600	150.00	378.8	Ladder Peak
10	700	150.00	324.7	Ladder Peak
11	1,000	150.00	227.3	Ladder Peak
12	2,000	150.00	113.6	Ladder Peak
13	3,000	150.00	75.8	Ladder Peak
14	7,000	150.00	32.5	Ladder Peak
15	10,380	75.00	10.9	Upper Marker
16	13,404	0.00	0.0	

Assay Class: High Sensitivity DNA Assay  
 Data Path: C:\...ents and Settings\Bioanalyzer\2012-11-21\2012-11-21\_001.xad

Created: 11/21/2012 10:14:04 AM  
 Modified: 11/21/2012 10:59:27 AM

**Electropherogram Summary Continued ...**



**Overall Results for sample 1 : Dong 2-2 Endo1**

Number of peaks found: 6                      Corr. Area 1: 459.7  
 Noise: 0.4

**Peak table for sample 1 : Dong 2-2 Endo1**

Peak	Size [bp]	Conc. [pg/μl]	Molarity [pmol/l]	Observations
1	35	125.00	5,411.3	Lower Marker
2	54	155.89	4,338.3	
3	362	102.76	429.7	
4	367	54.92	226.6	
5	391	235.76	913.6	
6	516	3.31	9.7	
7	10,380	75.00	10.9	Upper Marker
8	13,315	0.00	0.0	

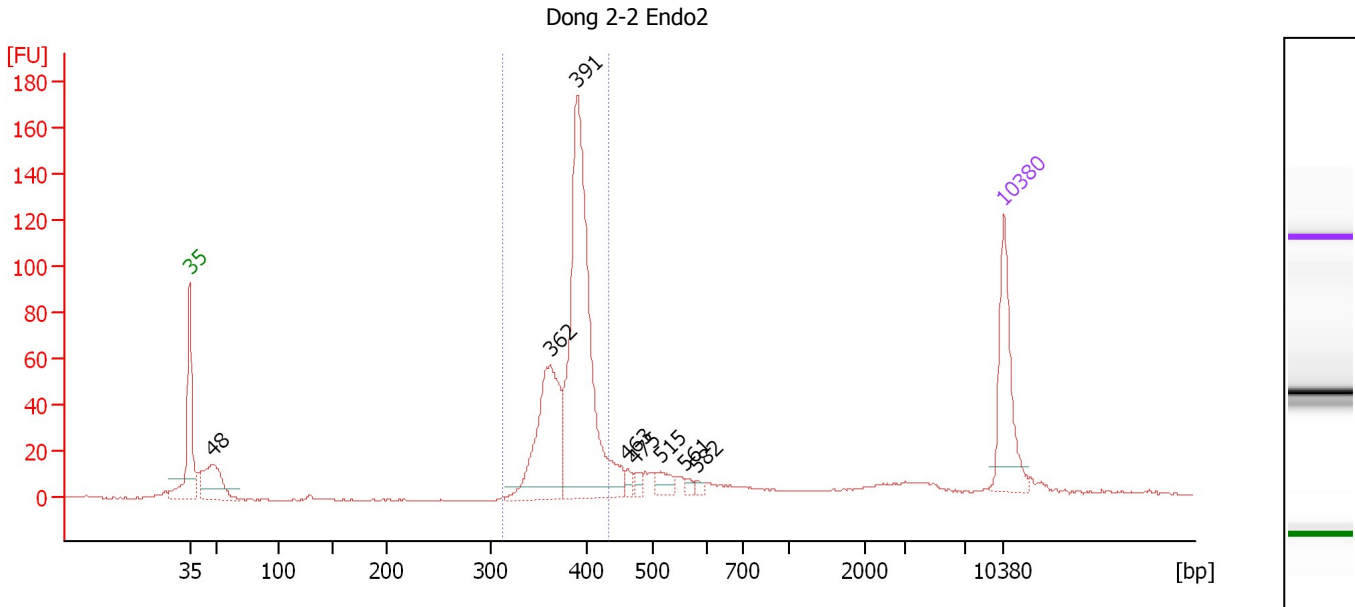
**Region table for sample 1 : Dong 2-2 Endo1**

From [bp]	To [bp]	Average Size [bp]	Molarity [pmol/l]	Conc. [pg/μl]	Corr. Area	% of Total	Size distribution in CV [%]	Color
290	446	382	1,704.8	428.36	459.7	60	6.7	Blue

Assay Class: High Sensitivity DNA Assay  
 Data Path: C:\...ents and Settings\Bioanalyzer\2012-11-21\2012-11-21\_001.xad

Created: 11/21/2012 10:14:04 AM  
 Modified: 11/21/2012 10:59:27 AM

**Electropherogram Summary Continued ...**



**Overall Results for sample 2 : Dong 2-2 Endo2**

Number of peaks found: 8                      Corr. Area 1: 606.9  
 Noise: 0.3

**Peak table for sample 2 : Dong 2-2 Endo2**

Peak	Size [bp]	Conc. [pg/μl]	Molarity [pmol/l]	Observations
1	35	125.00	5,411.3	Lower Marker
2	48	86.25	2,698.7	
3	362	171.29	716.8	
4	391	396.47	1,537.0	
5	463	7.34	24.0	
6	475	7.63	24.4	
7	515	16.19	47.6	
8	561	4.91	13.3	
9	582	4.45	11.6	
10	10,380	75.00	10.9	Upper Marker

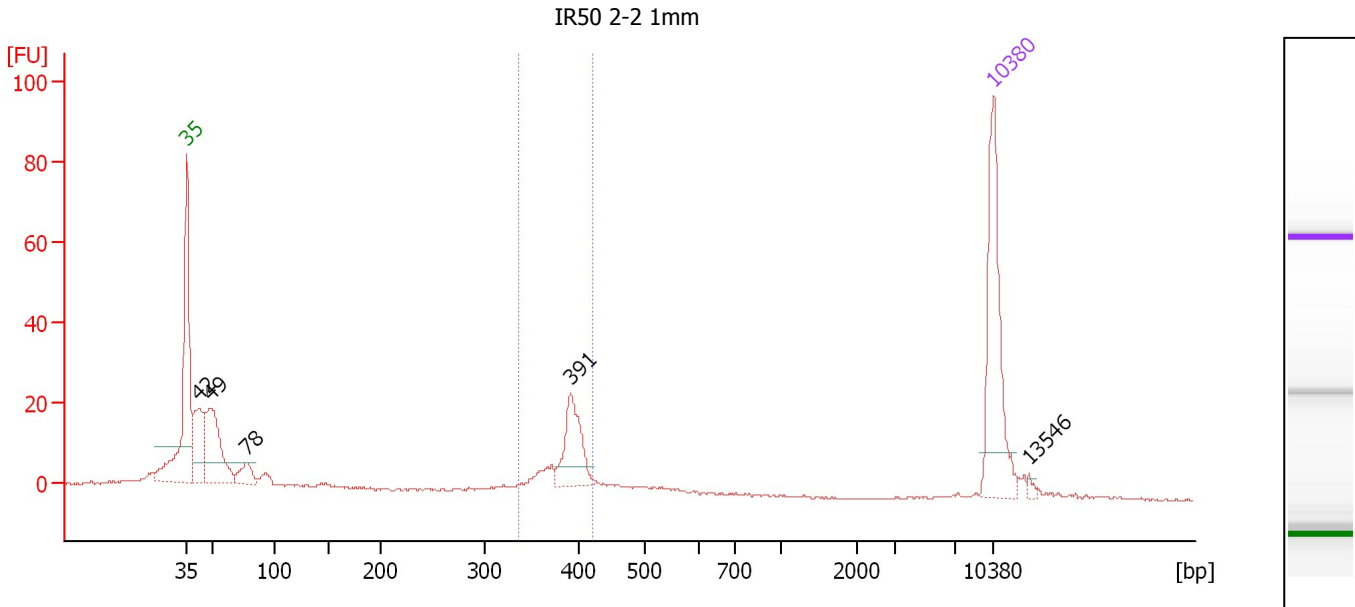
**Region table for sample 2 : Dong 2-2 Endo2**

From [bp]	To [bp]	Average Size [bp]	Molarity [pmol/l]	Conc. [pg/μl]	Corr. Area	% of Total	Size distribution in CV [%]	Color
313	434	385	2,087.2	529.01	606.9	68	5.3	Blue

Assay Class: High Sensitivity DNA Assay  
 Data Path: C:\...ents and Settings\Bioanalyzer\2012-11-21\2012-11-21\_001.xad

Created: 11/21/2012 10:14:04 AM  
 Modified: 11/21/2012 10:59:27 AM

**Electropherogram Summary Continued ...**



**Overall Results for sample 3 : IR50 2-2 1mm**

Number of peaks found: 5                      Corr. Area 1: 73.2  
 Noise: 0.3

**Peak table for sample 3 : IR50 2-2 1mm**

Peak	Size [bp]	Conc. [pg/μl]	Molarity [pmol/l]	Observations
1	35	125.00	5,411.3	Lower Marker
2	42	64.35	2,317.0	
3	49	91.81	2,865.4	
4	78	20.13	392.1	
5	391	50.33	194.9	
6	10,380	75.00	10.9	Upper Marker
7	13,546	0.00	0.0	

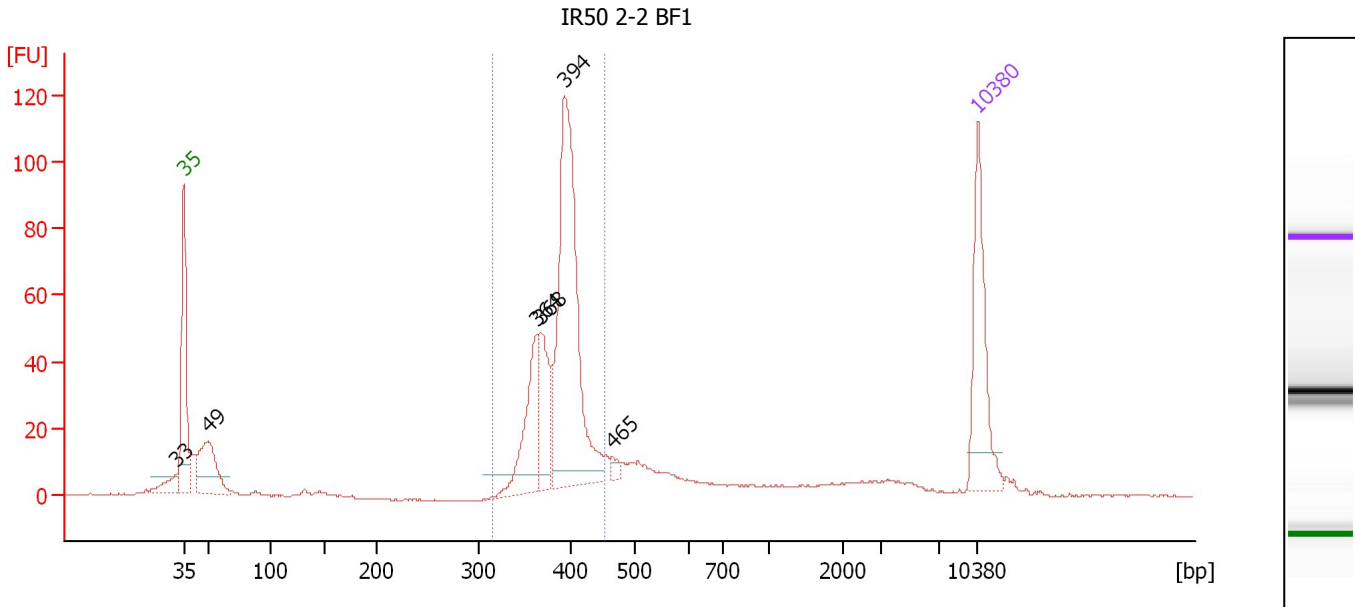
**Region table for sample 3 : IR50 2-2 1mm**

From [bp]	To [bp]	Average Size [bp]	Molarity [pmol/l]	Conc. [pg/μl]	Corr. Area	% of Total	Size distribution in CV [%]	Color
336	421	386	285.2	72.64	73.2	27	4.5	Blue

Assay Class: High Sensitivity DNA Assay  
 Data Path: C:\...ents and Settings\Bioanalyzer\2012-11-21\2012-11-21\_001.xad

Created: 11/21/2012 10:14:04 AM  
 Modified: 11/21/2012 10:59:27 AM

**Electropherogram Summary Continued ...**



**Overall Results for sample 4 : IR50 2-2 BF1**

Number of peaks found: 6                      Corr. Area 1: 485.5  
 Noise: 0.2

**Peak table for sample 4 : IR50 2-2 BF1**

Peak	Size [bp]	Conc. [pg/μl]	Molarity [pmol/l]	Observations
1	33	0.00	0.0	
2	35	125.00	5,411.3	Lower Marker
3	49	91.51	2,825.1	
4	364	81.73	340.4	
5	368	65.24	268.3	
6	394	288.26	1,109.1	
7	465	7.20	23.4	
8	10,380	75.00	10.9	Upper Marker

**Region table for sample 4 : IR50 2-2 BF1**

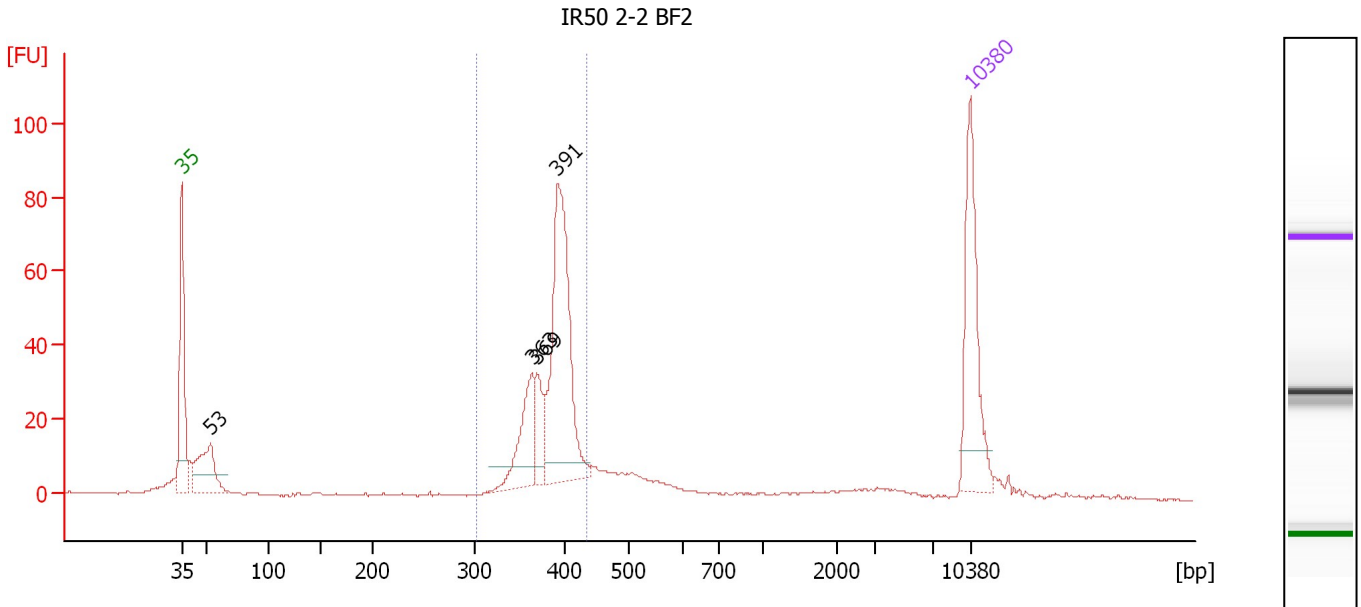
From [bp]	To [bp]	Average Size [bp]	Molarity [pmol/l]	Conc. [pg/μl]	Corr. Area	% of Total	Size distribution in CV [%]	Color
315	453	389	1,797.9	460.74	485.5	62	5.9	Blue



Assay Class: High Sensitivity DNA Assay  
 Data Path: C:\...ents and Settings\Bioanalyzer\2012-11-21\2012-11-21\_001.xad

Created: 11/21/2012 10:14:04 AM  
 Modified: 11/21/2012 10:59:27 AM

**Electropherogram Summary Continued ...**



**Overall Results for sample 5 : IR50 2-2 BF2**

Number of peaks found: 4                      Corr. Area 1: 327.1  
 Noise: 0.2

**Peak table for sample 5 : IR50 2-2 BF2**

Peak	Size [bp]	Conc. [pg/μl]	Molarity [pmol/l]	Observations
1	35	125.00	5,411.3	Lower Marker
2	53	70.11	2,012.8	
3	363	59.53	248.2	
4	369	27.78	114.2	
5	391	186.23	721.0	
6	10,380	75.00	10.9	Upper Marker

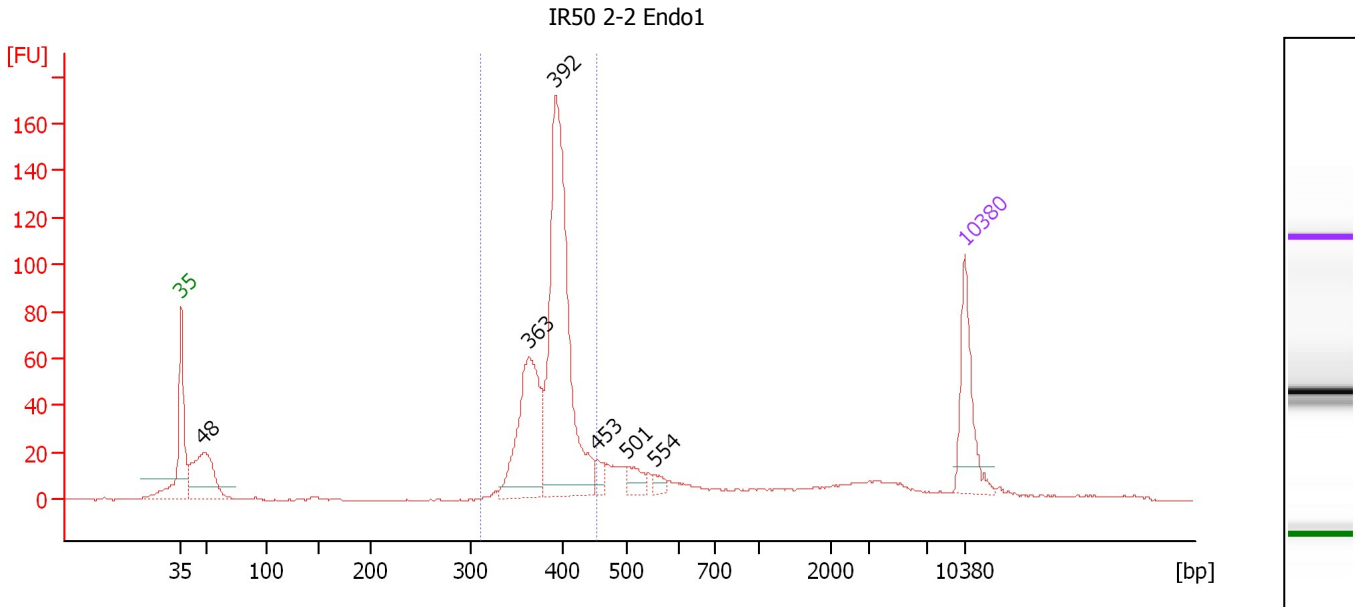
**Region table for sample 5 : IR50 2-2 BF2**

From [bp]	To [bp]	Average Size [bp]	Molarity [pmol/l]	Conc. [pg/μl]	Corr. Area	% of Total	Size distribution in CV [%]	Color
303	434	385	1,209.9	306.60	327.1	63	5.5	Blue

Assay Class: High Sensitivity DNA Assay  
 Data Path: C:\...ents and Settings\Bioanalyzer\2012-11-21\2012-11-21\_001.xad

Created: 11/21/2012 10:14:04 AM  
 Modified: 11/21/2012 10:59:27 AM

**Electropherogram Summary Continued ...**



**Overall Results for sample 6 : IR50 2-2 Endo1**

Number of peaks found: 6                      Corr. Area 1: 654.3  
 Noise: 0.2

**Peak table for sample 6 : IR50 2-2 Endo1**

Peak	Size [bp]	Conc. [pg/μl]	Molarity [pmol/l]	Observations
1	35	125.00	5,411.3	Lower Marker
2	48	158.59	5,006.6	
3	363	202.64	846.3	
4	392	455.72	1,761.1	
5	453	15.30	51.2	
6	501	23.33	70.6	
7	554	9.43	25.8	
8	10,380	75.00	10.9	Upper Marker

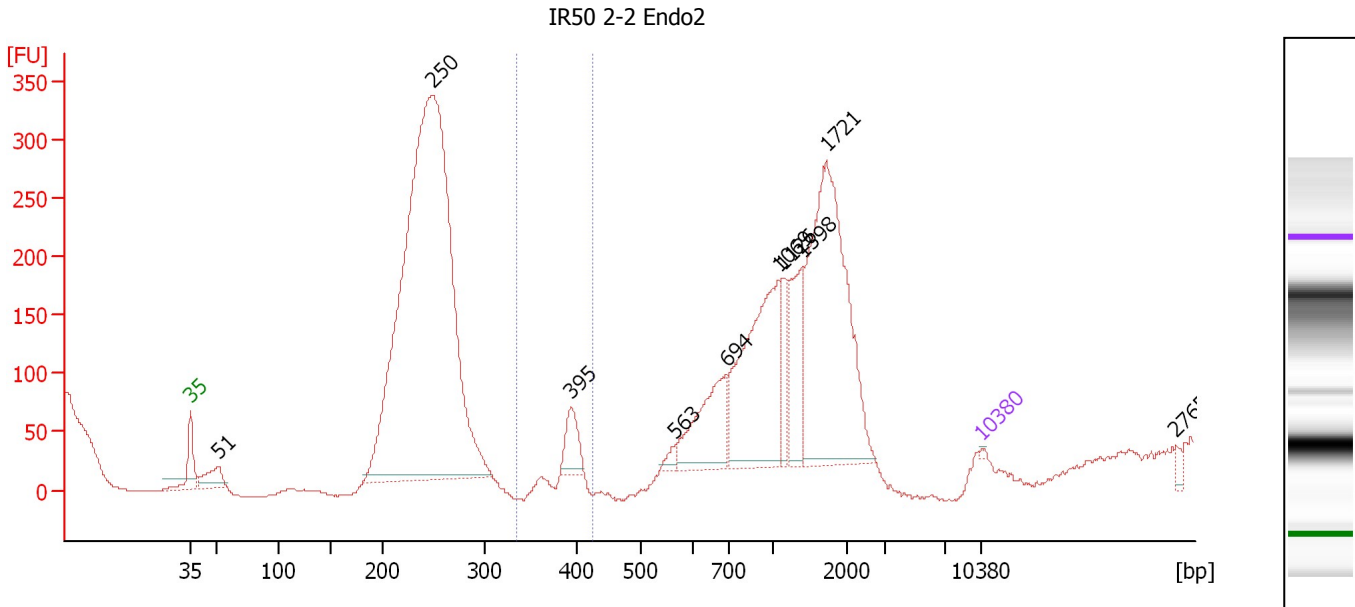
**Region table for sample 6 : IR50 2-2 Endo1**

From [bp]	To [bp]	Average Size [bp]	Molarity [pmol/l]	Conc. [pg/μl]	Corr. Area	% of Total	Size distribution in CV [%]	Color
310	453	389	2,637.7	674.80	654.3	63	6.0	Blue

Assay Class: High Sensitivity DNA Assay  
 Data Path: C:\...ents and Settings\Bioanalyzer\2012-11-21\2012-11-21\_001.xad

Created: 11/21/2012 10:14:04 AM  
 Modified: 11/21/2012 10:59:27 AM

**Electropherogram Summary Continued ...**



**Overall Results for sample 7 : IR50 2-2 Endo2**

Number of peaks found: 10                      Corr. Area 1: 12.6  
 Noise: 0.5

**Peak table for sample 7 : IR50 2-2 Endo2**

Peak	Size [bp]	Conc. [pg/μl]	Molarity [pmol/l]	Observations
1	35	125.00	5,411.3	Lower Marker
2	51	2,140.12	63,089.4	
3	250	64,526.75	391,383.2	
4	395	2,009.20	7,703.6	
5	563	501.07	1,347.9	
6	694	5,238.93	11,438.1	
7	1,069	10,086.77	14,298.5	
8	1,126	1,895.46	2,550.2	
9	1,398	3,414.76	3,699.9	
10	1,721	15,738.66	13,858.2	
11	10,380	75.00	10.9	Upper Marker
12	27,659	0.00	0.0	

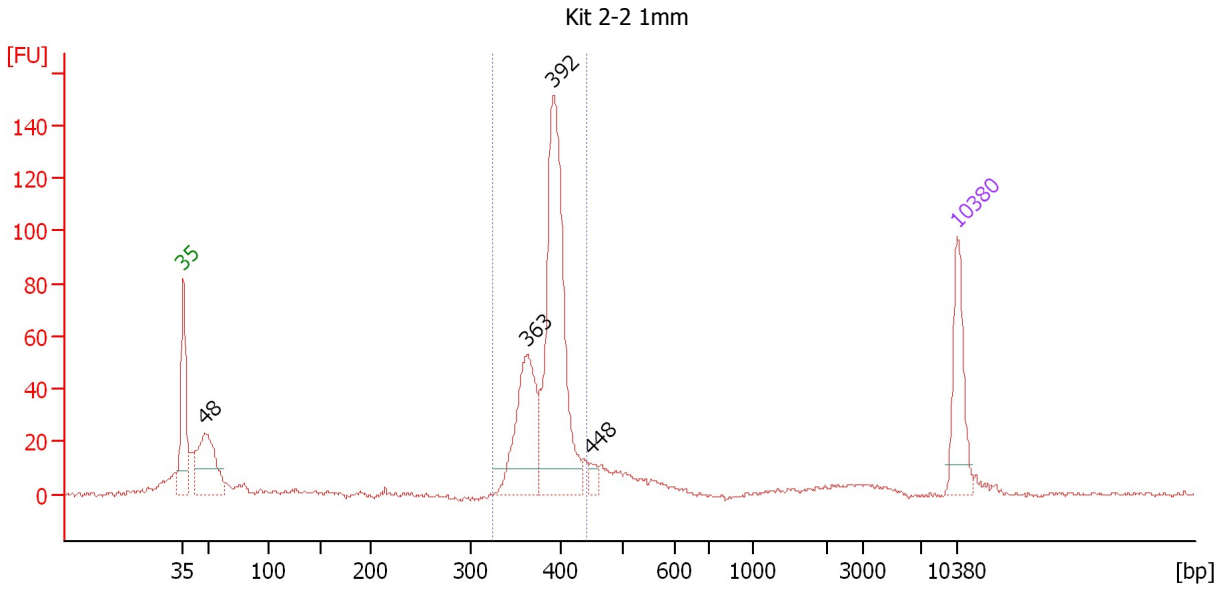
**Region table for sample 7 : IR50 2-2 Endo2**

From [bp]	To [bp]	Average Size [bp]	Molarity [pmol/l]	Conc. [pg/μl]	Corr. Area	% of Total	Size distribution in CV [%]	Color
336	426	395	989.1	258.10	12.6	0	0.6	Blue

Assay Class: High Sensitivity DNA Assay  
 Data Path: C:\...ents and Settings\Bioanalyzer\2012-11-21\2012-11-21\_001.xad

Created: 11/21/2012 10:14:04 AM  
 Modified: 11/21/2012 10:59:27 AM

**Electropherogram Summary Continued ...**



**Setpoint Deviations for sample 8 : Kit 2-2 1mm**

Height Threshold [FU] : 10

**Overall Results for sample 8 : Kit 2-2 1mm**

Number of peaks found: 4      Corr. Area 1: 531.6  
 Noise: 0.4

**Peak table for sample 8 : Kit 2-2 1mm**

Peak	Size [bp]	Conc. [pg/μl]	Molarity [pmol/l]	Observations
1	35	125.00	5,411.3	Lower Marker
2	48	165.09	5,194.3	
3	363	175.44	732.7	
4	392	410.37	1,584.4	
5	448	12.21	41.3	
6	10,380	75.00	10.9	Upper Marker

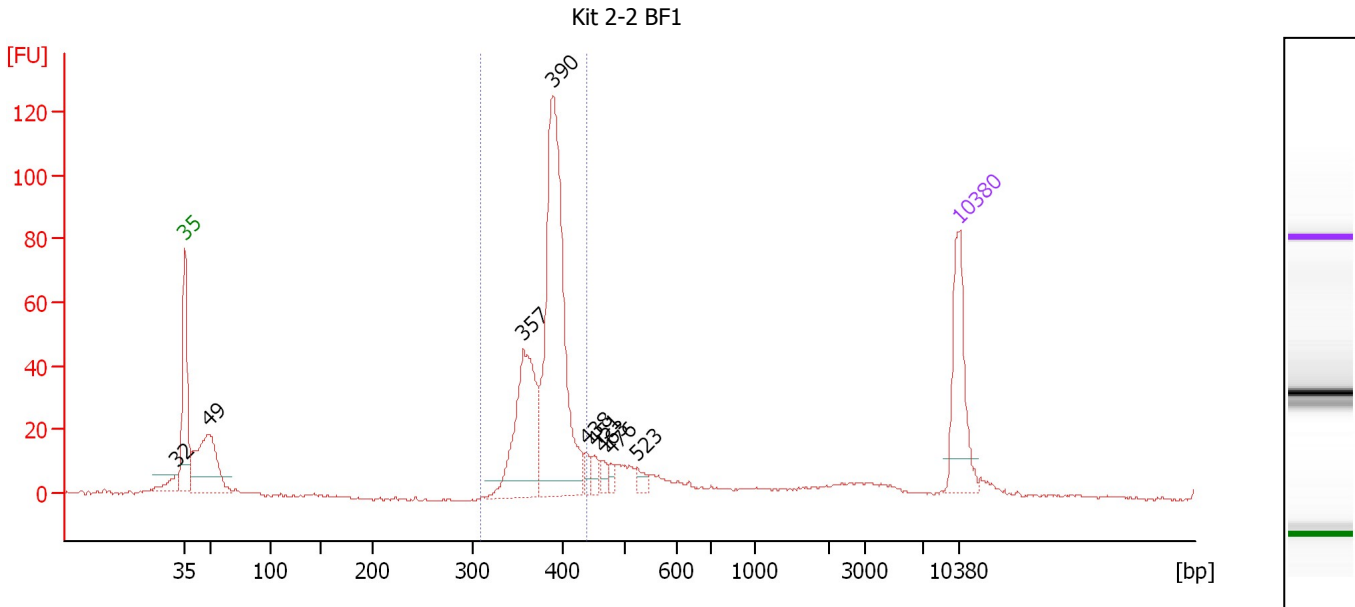
**Region table for sample 8 : Kit 2-2 1mm**

From [bp]	To [bp]	Average Size [bp]	Molarity [pmol/l]	Conc. [pg/μl]	Corr. Area	% of Total	Size distribution in CV [%]	Color
324	443	387	2,350.1	598.76	531.6	61	5.3	Blue

Assay Class: High Sensitivity DNA Assay  
 Data Path: C:\...ents and Settings\Bioanalyzer\2012-11-21\2012-11-21\_001.xad

Created: 11/21/2012 10:14:04 AM  
 Modified: 11/21/2012 10:59:27 AM

**Electropherogram Summary Continued ...**



**Overall Results for sample 9 : Kit 2-2 BF1**

Number of peaks found: 9                      Corr. Area 1: 457.4  
 Noise: 0.4

**Peak table for sample 9 : Kit 2-2 BF1**

Peak	Size [bp]	Conc. [pg/μl]	Molarity [pmol/l]	Observations
1	32	0.00	0.0	
2	35	125.00	5,411.3	Lower Marker
3	49	153.41	4,764.2	
4	357	170.03	721.2	
5	390	360.77	1,402.4	
6	438	11.52	39.9	
7	451	11.20	37.6	
8	463	8.80	28.8	
9	476	8.11	25.8	
10	523	9.67	28.0	
11	10,380	75.00	10.9	Upper Marker

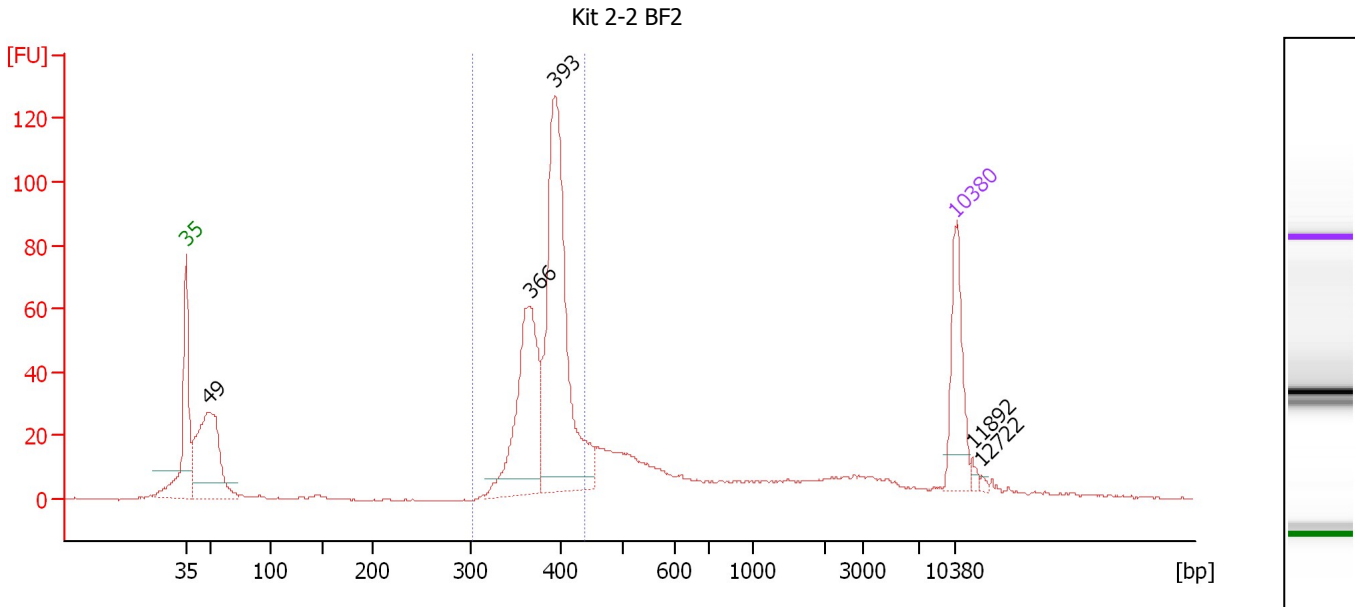
**Region table for sample 9 : Kit 2-2 BF1**

From [bp]	To [bp]	Average Size [bp]	Molarity [pmol/l]	Conc. [pg/μl]	Corr. Area	% of Total	Size distribution in CV [%]	Color
309	440	384	2,097.3	530.97	457.4	60	5.4	Blue

Assay Class: High Sensitivity DNA Assay  
 Data Path: C:\...ents and Settings\Bioanalyzer\2012-11-21\2012-11-21\_001.xad

Created: 11/21/2012 10:14:04 AM  
 Modified: 11/21/2012 10:59:27 AM

**Electropherogram Summary Continued ...**



**Overall Results for sample 10 : Kit 2-2 BF2**

Number of peaks found: 5                      Corr. Area 1: 529.0  
 Noise: 0.3

**Peak table for sample 10 : Kit 2-2 BF2**

Peak	Size [bp]	Conc. [pg/μl]	Molarity [pmol/l]	Observations
1	35	125.00	5,411.3	Lower Marker
2	49	262.89	8,096.7	
3	366	234.49	972.0	
4	393	415.00	1,600.2	
5	10,380	75.00	10.9	Upper Marker
6	11,892	0.00	0.0	
7	12,722	0.00	0.0	

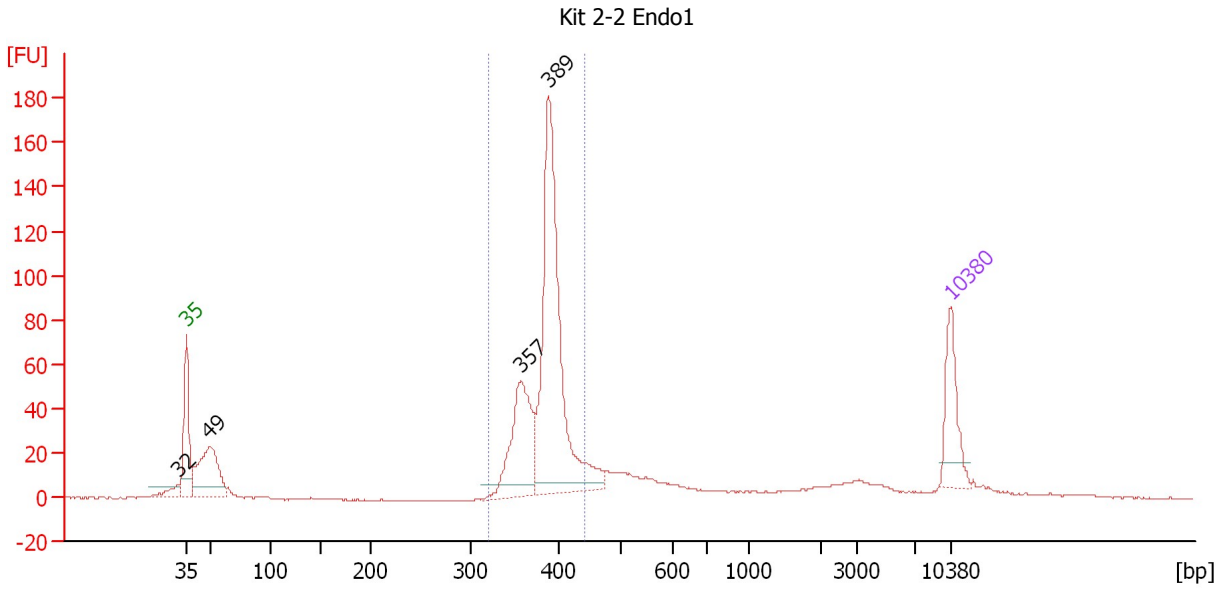
**Region table for sample 10 : Kit 2-2 BF2**

From [bp]	To [bp]	Average Size [bp]	Molarity [pmol/l]	Conc. [pg/μl]	Corr. Area	% of Total	Size distribution in CV [%]	Color
301	439	385	2,569.8	650.67	529.0	54	5.9	Blue

Assay Class: High Sensitivity DNA Assay  
 Data Path: C:\...ents and Settings\Bioanalyzer\2012-11-21\2012-11-21\_001.xad

Created: 11/21/2012 10:14:04 AM  
 Modified: 11/21/2012 10:59:27 AM

**Electropherogram Summary Continued ...**



**Overall Results for sample 11 : Kit 2-2 Endo1**

Number of peaks found: 4                      Corr. Area 1: 571.9  
 Noise: 0.3

**Peak table for sample 11 : Kit 2-2 Endo1**

Peak	Size [bp]	Conc. [pg/μl]	Molarity [pmol/l]	Observations
1	32	0.00	0.0	
2	35	125.00	5,411.3	Lower Marker
3	49	195.68	6,054.3	
4	357	196.28	832.1	
5	389	523.27	2,040.2	
6	10,380	75.00	10.9	Upper Marker

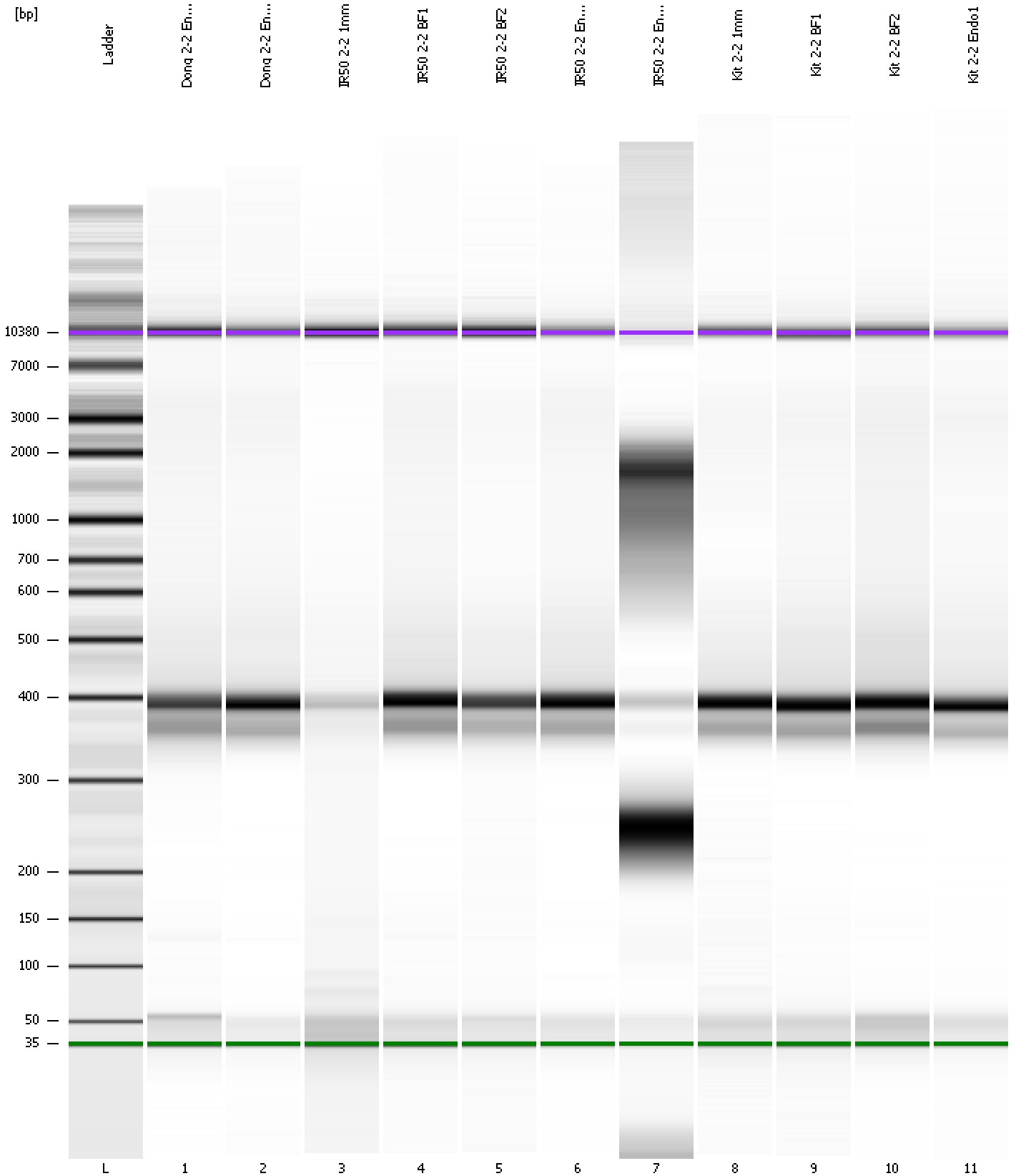
**Region table for sample 11 : Kit 2-2 Endo1**

From [bp]	To [bp]	Average Size [bp]	Molarity [pmol/l]	Conc. [pg/μl]	Corr. Area	% of Total	Size distribution in CV [%]	Color
320	440	384	2,764.4	700.12	571.9	61	5.4	Blue

Assay Class: High Sensitivity DNA Assay  
Data Path: C:\...ents and Settings\Bioanalyzer\2012-11-21\2012-11-21\_001.xad

Created: 11/21/2012 10:14:04 AM  
Modified: 11/21/2012 10:59:27 AM

**Gel Image**





Assay Class: High Sensitivity DNA Assay  
 Data Path: C:\...ents and Settings\Bioanalyzer\2012-11-21\2012-11-21\_001.xad

Created: 11/21/2012 10:14:04 AM  
 Modified: 11/21/2012 10:59:27 AM

**Run Logbook**

Description	Number	Source	Category	Sub Category	Time	Time Zone	User	Host
Run ended on port 1 (Number of wells acquired: 12)		Instrument	Run		11/21/2012 10:55:23 AM	(GMT --08:00) Pacific Standard Time	UC Davis	D8XSMGH1
Run started on port 1 (File: C:\Documents and Settings\Bioanalyzer\2012-11-21\2012-11-21_001.xad)		Instrument	Run		11/21/2012 10:14:09 AM	(GMT --08:00) Pacific Standard Time	UC Davis	D8XSMGH1
Product Number : G2938B		Instrument	Run		11/21/2012 10:14:09 AM	(GMT --08:00) Pacific Standard Time	UC Davis	D8XSMGH1
Name :		Instrument	Run		11/21/2012 10:14:09 AM	(GMT --08:00) Pacific Standard Time	UC Davis	D8XSMGH1
Vendor : Agilent Technologies		Instrument	Run		11/21/2012 10:14:09 AM	(GMT --08:00) Pacific Standard Time	UC Davis	D8XSMGH1
Serial# : DE13701086		Instrument	Run		11/21/2012 10:14:09 AM	(GMT --08:00) Pacific Standard Time	UC Davis	D8XSMGH1
Firmware : C.01.069		Instrument	Run		11/21/2012 10:14:09 AM	(GMT --08:00) Pacific Standard Time	UC Davis	D8XSMGH1
Cartridge : Electrode		Instrument	Run		11/21/2012 10:14:09 AM	(GMT --08:00) Pacific Standard Time	UC Davis	D8XSMGH1