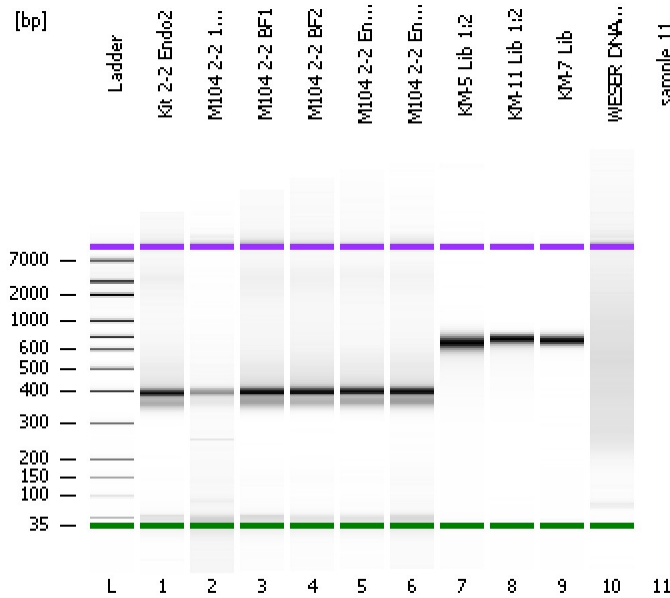


Assay Class: High Sensitivity DNA Assay
Data Path: C:\...ents and Settings\Bioanalyzer\2012-11-21\2012-11-21_003.xad

Created: 11/21/2012 11:07:33 AM
Modified: 11/21/2012 11:48:30 AM

Electrophoresis File Run Summary



Instrument Information:

Instrument Name: DE13701086 Firmware: C.01.069
Serial#: DE13701086 Type: G2938B

Assay Information:

Assay Origin Path: C:\Program Files\Agilent\2100 bioanalyzer\2100 expert\assays\dsDNA\High Sensitivity DNA.xsy
Assay Class: High Sensitivity DNA Assay
Version: 1.03
Assay Comments: Copyright © 2003-2010 Agilent Technologies

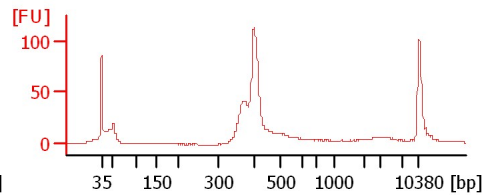
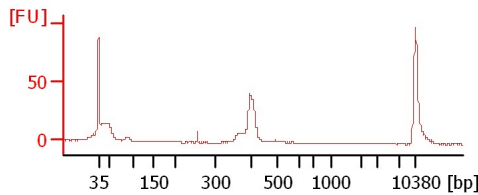
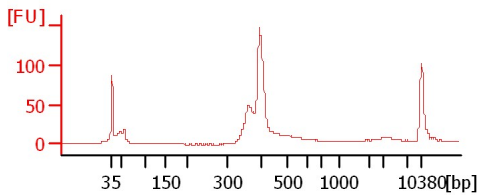
Chip Information:

Chip Lot #:
Reagent Kit Lot #:
Chip Comments:

Kit 2-2 Endo2

M104 2-2 1mm

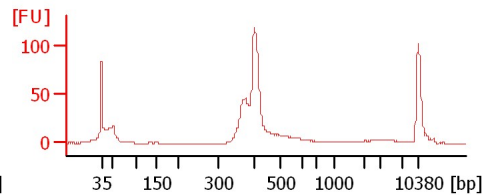
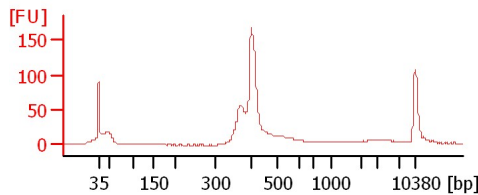
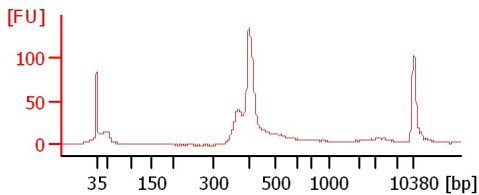
M104 2-2 BF1



M104 2-2 BF2

M104 2-2 Endo1

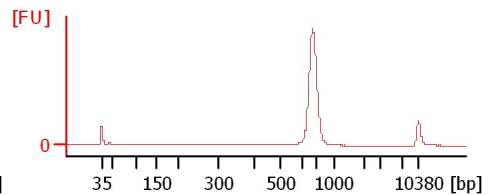
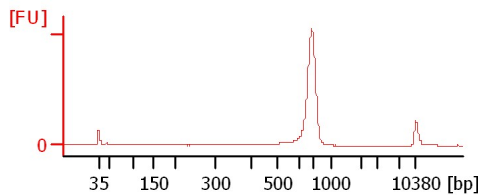
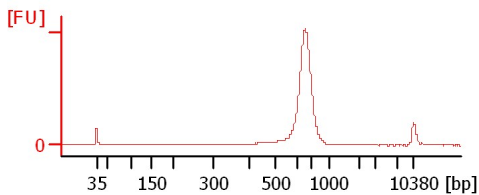
M104 2-2 Endo2



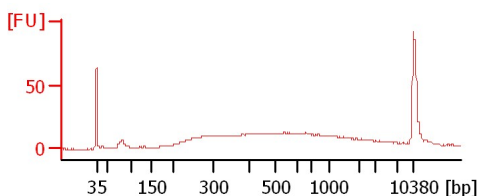
KM-5 Lib 1:2

KM-11 Lib 1:2

KM-7 Lib



WESER DNA 1:5



Assay Class: High Sensitivity DNA Assay
 Data Path: C:\...ents and Settings\Bioanalyzer\2012-11-21\2012-11-21_003.xad

Created: 11/21/2012 11:07:33 AM
 Modified: 11/21/2012 11:48:30 AM

Electrophoresis File Run Summary (Chip Summary)

Sample Name	Sample Comment	Rest. Digest	Status	Observation	Result Label	Result Color
Kit 2-2 Endo2		<input type="checkbox"/>	✓			
M104 2-2 1mm		<input type="checkbox"/>	✓			
M104 2-2 BF1		<input type="checkbox"/>	✓			
M104 2-2 BF2		<input type="checkbox"/>	✓			
M104 2-2 Endo1		<input type="checkbox"/>	✓			
M104 2-2 Endo2		<input type="checkbox"/>	✓			
KM-5 Lib 1:2		<input type="checkbox"/>	✓			
KM-11 Lib 1:2		<input type="checkbox"/>	✓			
KM-7 Lib		<input type="checkbox"/>	✓			
WESER DNA 1:5		<input type="checkbox"/>	✓			
sample 11		<input type="checkbox"/>				
Ladder		<input type="checkbox"/>	✓			

Chip Lot #

Reagent Kit Lot #

Chip Comments :

Assay Class: High Sensitivity DNA Assay
Data Path: C:\...ents and Settings\Bioanalyzer\2012-11-21\2012-11-21_003.xad

Created: 11/21/2012 11:07:33 AM
Modified: 11/21/2012 11:48:30 AM

Electrophoresis Assay Details

General Analysis Settings

Number of Available Sample and Ladder Wells (Max.) : 12
Minimum Visible Range [s] : 32
Maximum Visible Range [s] : 138
Start Analysis Time Range [s] : 33
End Analysis Time Range [s] : 137.5
Ladder Concentration [pg/μl] : 1950
Uses Standard Area for Ladder Fragments
Lower Marker Concentration [pg/μl] : 125
Upper Marker Concentration [pg/μl] : 75
Used Upper Marker for Quantitation
Standard Curve Fit is Point to Point
Show Data Aligned to Lower and Upper Marker

Integrator Settings

Integration Start Time [s] : 33.05
Integration End Time [s] : 137
Slope Threshold : 0.8
Height Threshold [FU] : 5
Area Threshold : 0.1
Width Threshold [s] : 0.6
Baseline Plateau [s] : 0.5

Filter Settings

Filter Width [s] : 0.5
Polynomial Order : 4

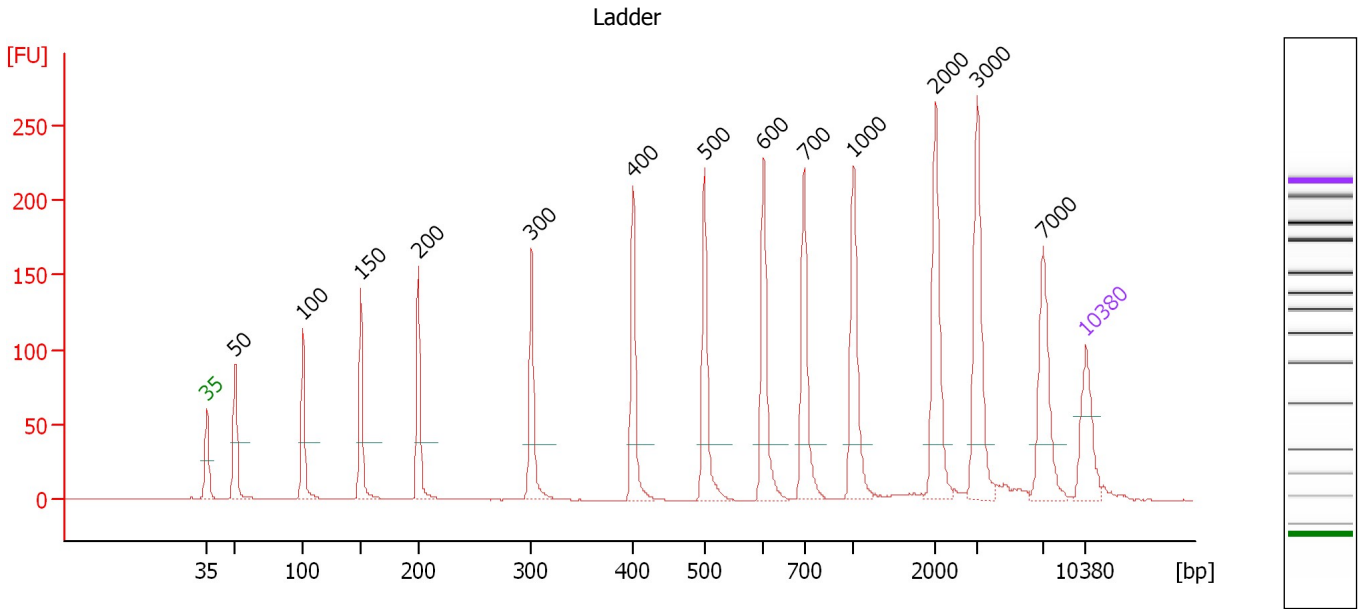
Ladder

Ladder Peak	Size	Area
1	35	160
2	50	210
3	100	208
4	150	221
5	200	242
6	300	270
7	400	305
8	500	306
9	600	336
10	700	321
11	1000	366
12	2000	413
13	3000	411
14	7000	400
15	10380	214

Assay Class: High Sensitivity DNA Assay
 Data Path: C:\...ents and Settings\Bioanalyzer\2012-11-21\2012-11-21_003.xad

Created: 11/21/2012 11:07:33 AM
 Modified: 11/21/2012 11:48:30 AM

Electropherogram Summary



Overall Results for Ladder

Noise: 0.2

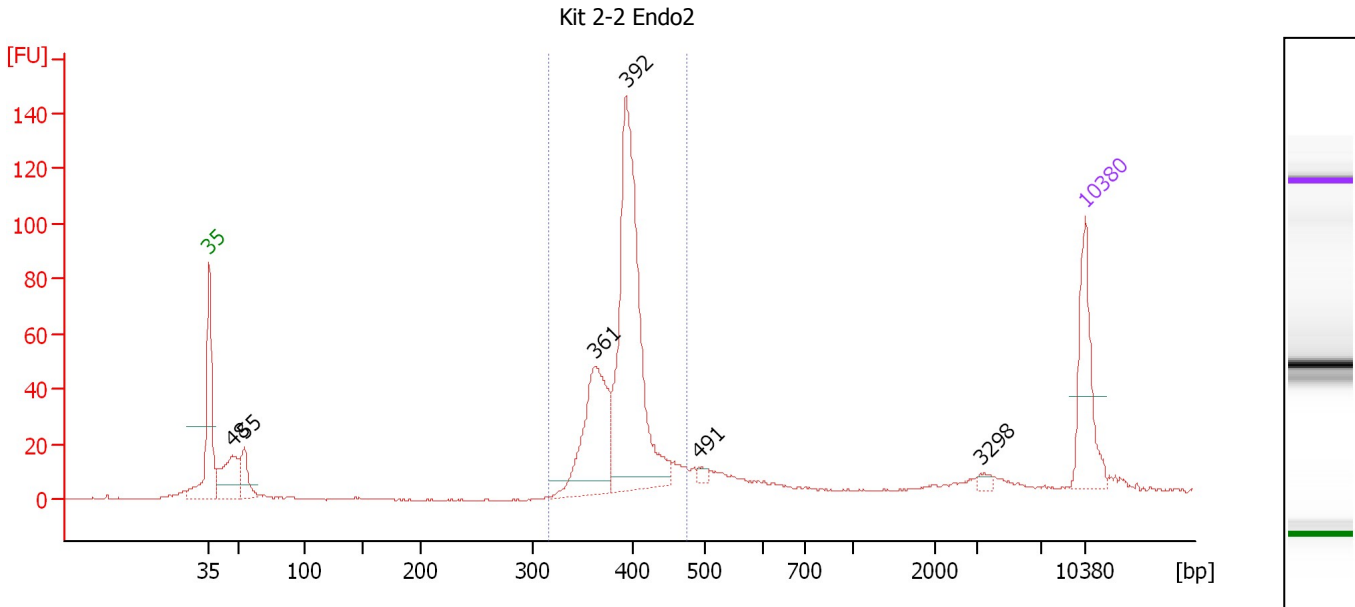
Peak table for Ladder

Peak	Size [bp]	Conc. [pg/μl]	Molarity [pmol/l]	Observations
1	35	125.00	5,411.3	Lower Marker
2	50	150.00	4,545.5	Ladder Peak
3	100	150.00	2,272.7	Ladder Peak
4	150	150.00	1,515.2	Ladder Peak
5	200	150.00	1,136.4	Ladder Peak
6	300	150.00	757.6	Ladder Peak
7	400	150.00	568.2	Ladder Peak
8	500	150.00	454.5	Ladder Peak
9	600	150.00	378.8	Ladder Peak
10	700	150.00	324.7	Ladder Peak
11	1,000	150.00	227.3	Ladder Peak
12	2,000	150.00	113.6	Ladder Peak
13	3,000	150.00	75.8	Ladder Peak
14	7,000	150.00	32.5	Ladder Peak
15	10,380	75.00	10.9	Upper Marker

Assay Class: High Sensitivity DNA Assay
 Data Path: C:\...ents and Settings\Bioanalyzer\2012-11-21\2012-11-21_003.xad

Created: 11/21/2012 11:07:33 AM
 Modified: 11/21/2012 11:48:30 AM

Electropherogram Summary Continued ...



Overall Results for sample 1 : Kit 2-2 Endo2

Number of peaks found: 6 Corr. Area 1: 546.4
 Noise: 0.2

Peak table for sample 1 : Kit 2-2 Endo2

Peak	Size [bp]	Conc. [pg/μl]	Molarity [pmol/l]	Observations
1	35	125.00	5,411.3	Lower Marker
2	48	94.71	3,020.6	
3	55	46.66	1,289.3	
4	361	169.32	710.5	
5	392	386.88	1,494.3	
6	491	6.25	19.3	
7	3,298	5.68	2.6	
8	10,380	75.00	10.9	Upper Marker

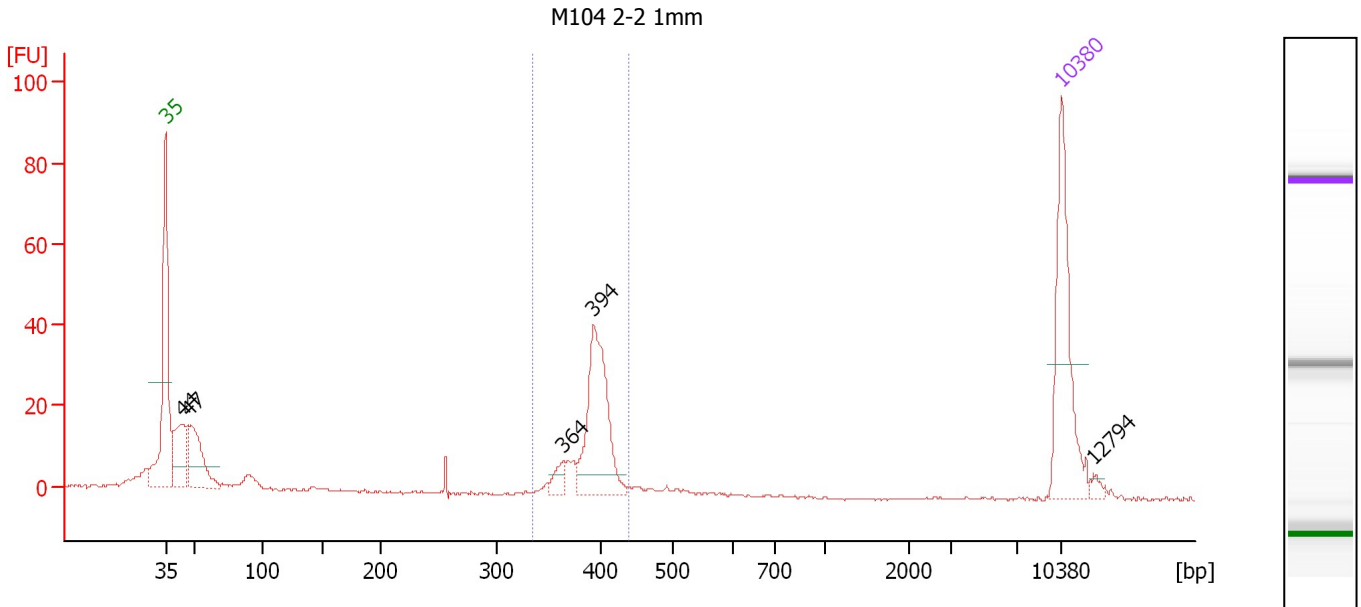
Region table for sample 1 : Kit 2-2 Endo2

From [bp]	To [bp]	Average Size [bp]	Molarity [pmol/l]	Conc. [pg/μl]	Corr. Area	% of Total	Size distribution in CV [%]	Color
316	475	392	2,279.5	587.07	546.4	70	6.7	Blue

Assay Class: High Sensitivity DNA Assay
 Data Path: C:\...ents and Settings\Bioanalyzer\2012-11-21\2012-11-21_003.xad

Created: 11/21/2012 11:07:33 AM
 Modified: 11/21/2012 11:48:30 AM

Electropherogram Summary Continued ...



Overall Results for sample 2 : M104 2-2 1mm

Number of peaks found: 5 Corr. Area 1: 122.8
 Noise: 0.3

Peak table for sample 2 : M104 2-2 1mm

Peak	Size [bp]	Conc. [pg/μl]	Molarity [pmol/l]	Observations
1	35	125.00	5,411.3	Lower Marker
2	44	60.03	2,064.1	
3	47	70.19	2,263.3	
4	364	11.26	46.8	
5	394	105.72	406.7	
6	10,380	75.00	10.9	Upper Marker
7	12,794	0.00	0.0	

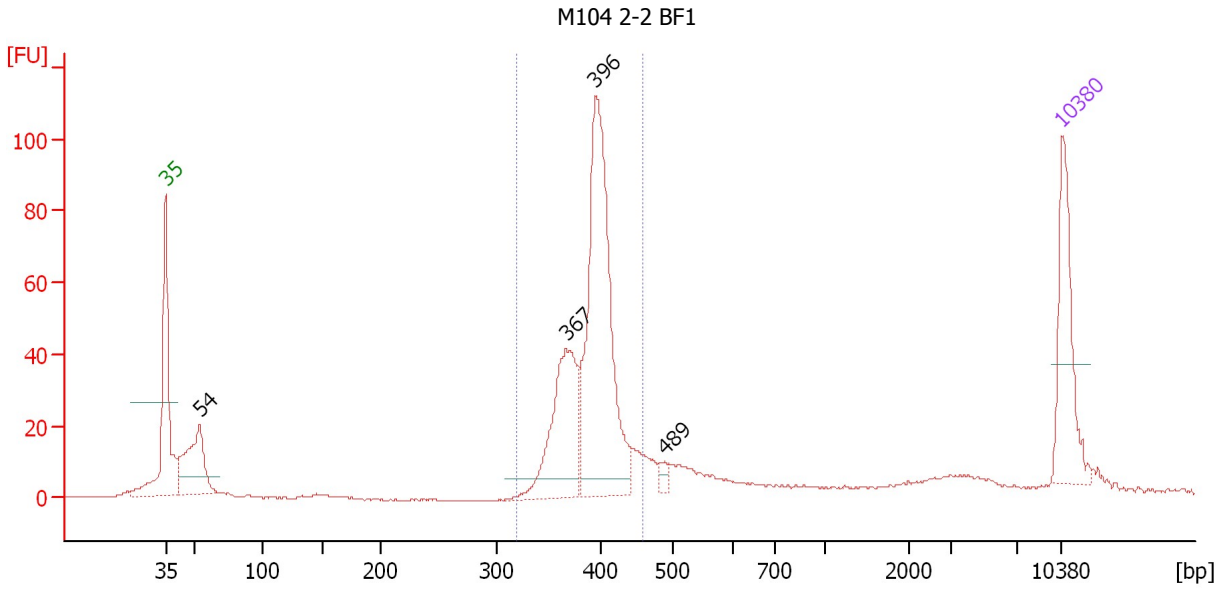
Region table for sample 2 : M104 2-2 1mm

From [bp]	To [bp]	Average Size [bp]	Molarity [pmol/l]	Conc. [pg/μl]	Corr. Area	% of Total	Size distribution in CV [%]	Color
335	440	393	481.6	124.87	122.8	45	4.3	Blue

Assay Class: High Sensitivity DNA Assay
 Data Path: C:\...ents and Settings\Bioanalyzer\2012-11-21\2012-11-21_003.xad

Created: 11/21/2012 11:07:33 AM
 Modified: 11/21/2012 11:48:30 AM

Electropherogram Summary Continued ...



Overall Results for sample 3 : M104 2-2 BF1

Number of peaks found: 4 Corr. Area 1: 449.4
 Noise: 0.2

Peak table for sample 3 : M104 2-2 BF1

Peak	Size [bp]	Conc. [pg/μl]	Molarity [pmol/l]	Observations
1	35	125.00	5,411.3	Lower Marker
2	54	107.95	3,040.2	
3	367	144.82	597.4	
4	396	317.57	1,215.6	
5	489	10.12	31.4	
6	10,380	75.00	10.9	Upper Marker

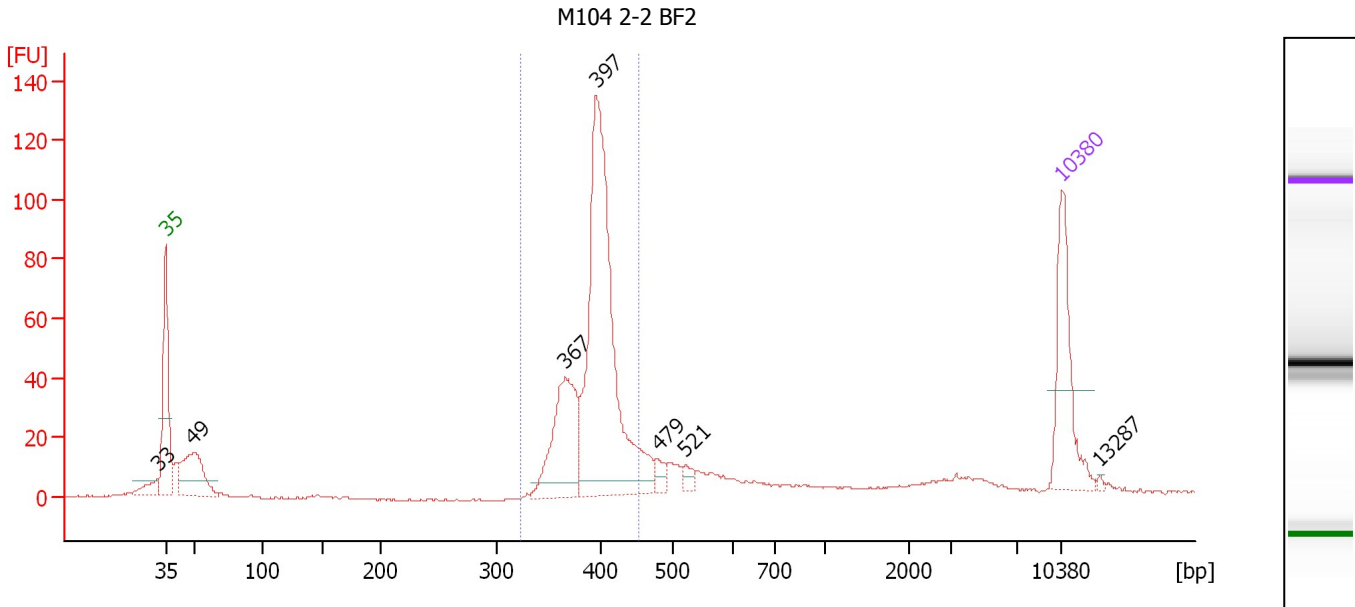
Region table for sample 3 : M104 2-2 BF1

From [bp]	To [bp]	Average Size [bp]	Molarity [pmol/l]	Conc. [pg/μl]	Corr. Area	% of Total	Size distribution in CV [%]	Color
320	458	393	1,822.9	471.43	449.4	66	6.0	Blue

Assay Class: High Sensitivity DNA Assay
 Data Path: C:\...ents and Settings\Bioanalyzer\2012-11-21\2012-11-21_003.xad

Created: 11/21/2012 11:07:33 AM
 Modified: 11/21/2012 11:48:30 AM

Electropherogram Summary Continued ...



Overall Results for sample 4 : M104 2-2 BF2

Number of peaks found: 7 Corr. Area 1: 493.7
 Noise: 0.3

Peak table for sample 4 : M104 2-2 BF2

Peak	Size [bp]	Conc. [pg/μl]	Molarity [pmol/l]	Observations
1	33	0.00	0.0	
2	35	125.00	5,411.3	Lower Marker
3	49	93.81	2,872.6	
4	367	123.12	508.7	
5	397	380.45	1,453.8	
6	479	11.05	35.0	
7	521	8.67	25.2	
8	10,380	75.00	10.9	Upper Marker
9	13,287	0.00	0.0	

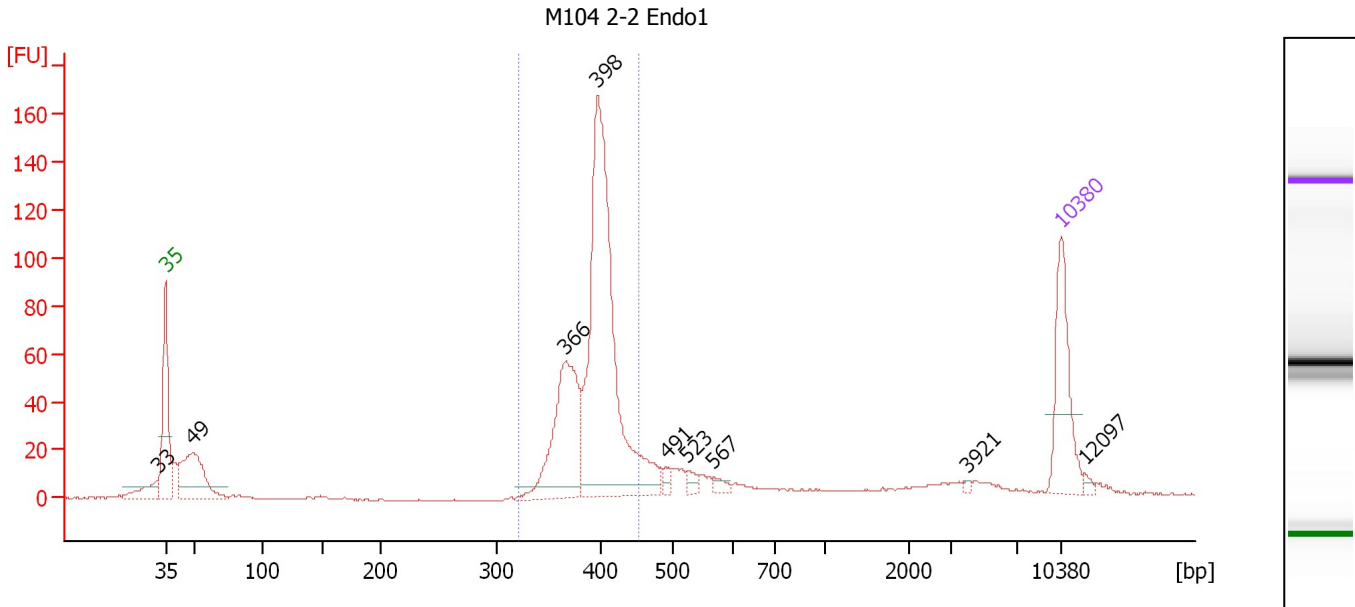
Region table for sample 4 : M104 2-2 BF2

From [bp]	To [bp]	Average Size [bp]	Molarity [pmol/l]	Conc. [pg/μl]	Corr. Area	% of Total	Size distribution in CV [%]	Color
324	452	395	1,841.1	478.88	493.7	62	5.7	Blue

Assay Class: High Sensitivity DNA Assay
 Data Path: C:\...ents and Settings\Bioanalyzer\2012-11-21\2012-11-21_003.xad

Created: 11/21/2012 11:07:33 AM
 Modified: 11/21/2012 11:48:30 AM

Electropherogram Summary Continued ...



Overall Results for sample 5 : M104 2-2 Endo1

Number of peaks found: 9 Corr. Area 1: 619.0
 Noise: 0.4

Peak table for sample 5 : M104 2-2 Endo1

Peak	Size [bp]	Conc. [pg/μl]	Molarity [pmol/l]	Observations
1	33	0.00	0.0	
2	35	125.00	5,411.3	Lower Marker
3	49	121.35	3,716.2	
4	366	175.70	727.9	
5	398	437.59	1,666.2	
6	491	7.76	23.9	
7	523	9.47	27.4	
8	567	7.89	21.1	
9	3,921	2.08	0.8	
10	10,380	75.00	10.9	Upper Marker
11	12,097	0.00	0.0	

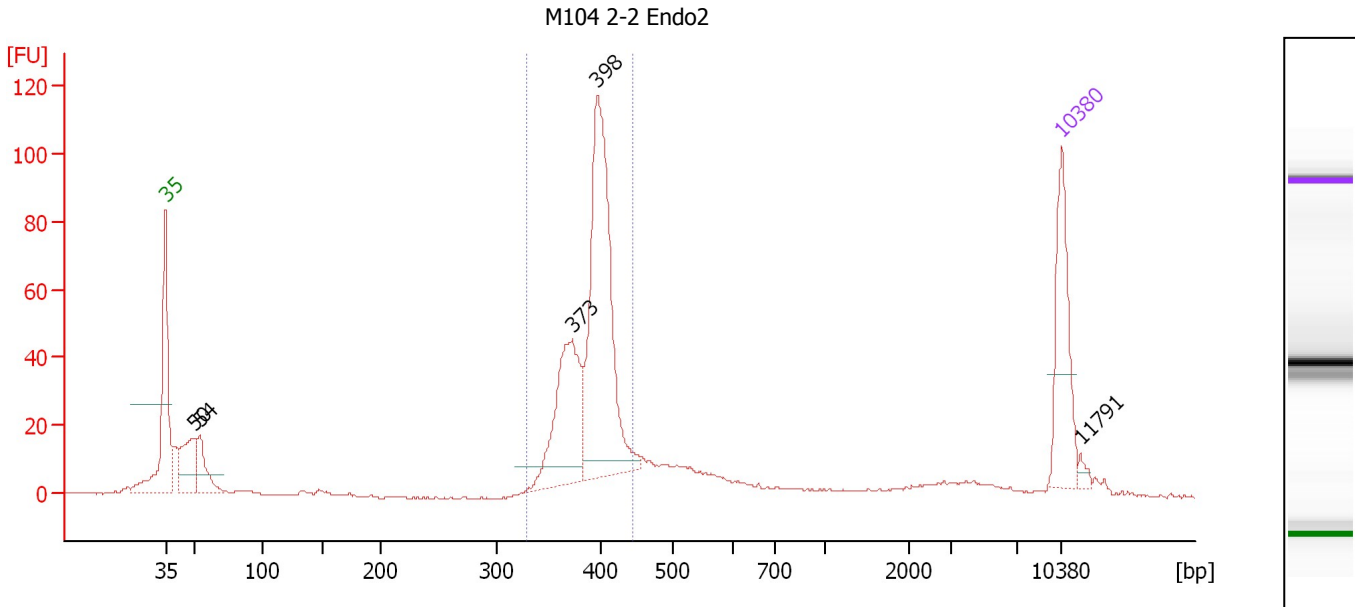
Region table for sample 5 : M104 2-2 Endo1

From [bp]	To [bp]	Average Size [bp]	Molarity [pmol/l]	Conc. [pg/μl]	Corr. Area	% of Total	Size distribution in CV [%]	Color
322	453	395	2,214.1	574.92	619.0	64	5.8	Blue

Assay Class: High Sensitivity DNA Assay
 Data Path: C:\...ents and Settings\Bioanalyzer\2012-11-21\2012-11-21_003.xad

Created: 11/21/2012 11:07:33 AM
 Modified: 11/21/2012 11:48:30 AM

Electropherogram Summary Continued ...



Overall Results for sample 6 : M104 2-2 Endo2

Number of peaks found: 5 Corr. Area 1: 455.5
 Noise: 0.3

Peak table for sample 6 : M104 2-2 Endo2

Peak	Size [bp]	Conc. [pg/μl]	Molarity [pmol/l]	Observations
1	35	125.00	5,411.3	Lower Marker
2	50	68.99	2,091.0	
3	54	47.34	1,328.7	
4	373	145.11	589.8	
5	398	293.13	1,116.8	
6	10,380	75.00	10.9	Upper Marker
7	11,791	0.00	0.0	

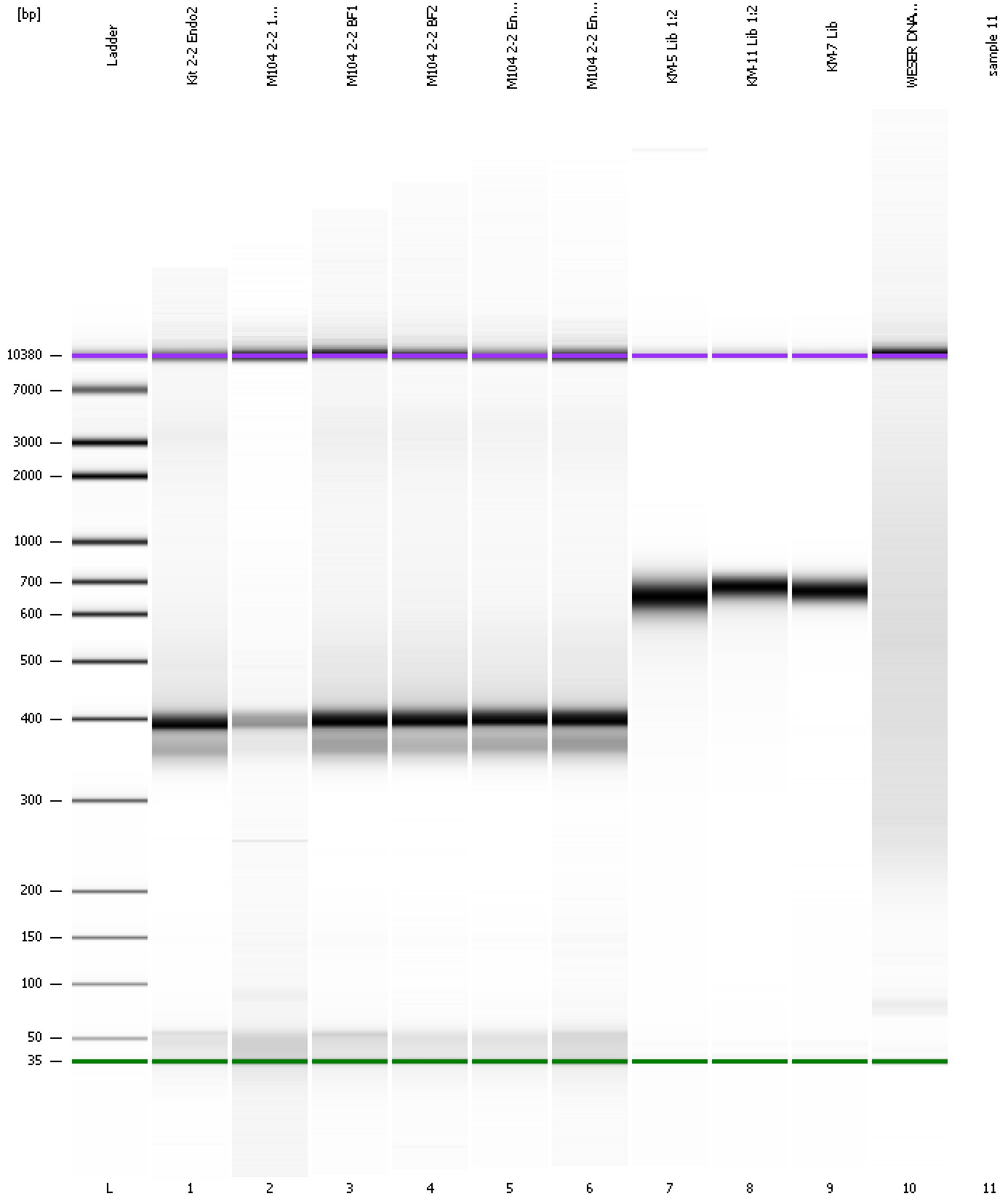
Region table for sample 6 : M104 2-2 Endo2

From [bp]	To [bp]	Average Size [bp]	Molarity [pmol/l]	Conc. [pg/μl]	Corr. Area	% of Total	Size distribution in CV [%]	Color
329	446	392	1,863.4	481.15	455.5	62	5.6	Blue

Assay Class: High Sensitivity DNA Assay
Data Path: C:\...ents and Settings\Bioanalyzer\2012-11-21\2012-11-21_003.xad

Created: 11/21/2012 11:07:33 AM
Modified: 11/21/2012 11:48:30 AM

Gel Image



Assay Class: High Sensitivity DNA Assay
 Data Path: C:\...ents and Settings\Bioanalyzer\2012-11-21\2012-11-21_003.xad

Created: 11/21/2012 11:07:33 AM
 Modified: 11/21/2012 11:48:30 AM

Run Logbook

Description	Number	Source	Category	Sub Category	Time	Time Zone	User	Host
Run ended on port 1 (Number of wells acquired: 11)		Instrument	Run		11/21/2012 11:45:53 AM	(GMT --08:00) Pacific Standard Time	UC Davis	D8XSMGH1
Run started on port 1 (File: C:\Documents and Settings\Bioanalyzer\2012-11-21\2012-11-21_003.xad)		Instrument	Run		11/21/2012 11:07:34 AM	(GMT --08:00) Pacific Standard Time	UC Davis	D8XSMGH1
Product Number : G2938B		Instrument	Run		11/21/2012 11:07:34 AM	(GMT --08:00) Pacific Standard Time	UC Davis	D8XSMGH1
Name :		Instrument	Run		11/21/2012 11:07:34 AM	(GMT --08:00) Pacific Standard Time	UC Davis	D8XSMGH1
Vendor : Agilent Technologies		Instrument	Run		11/21/2012 11:07:34 AM	(GMT --08:00) Pacific Standard Time	UC Davis	D8XSMGH1
Serial# : DE13701086		Instrument	Run		11/21/2012 11:07:34 AM	(GMT --08:00) Pacific Standard Time	UC Davis	D8XSMGH1
Firmware : C.01.069		Instrument	Run		11/21/2012 11:07:34 AM	(GMT --08:00) Pacific Standard Time	UC Davis	D8XSMGH1
Cartridge : Electrode		Instrument	Run		11/21/2012 11:07:34 AM	(GMT --08:00) Pacific Standard Time	UC Davis	D8XSMGH1