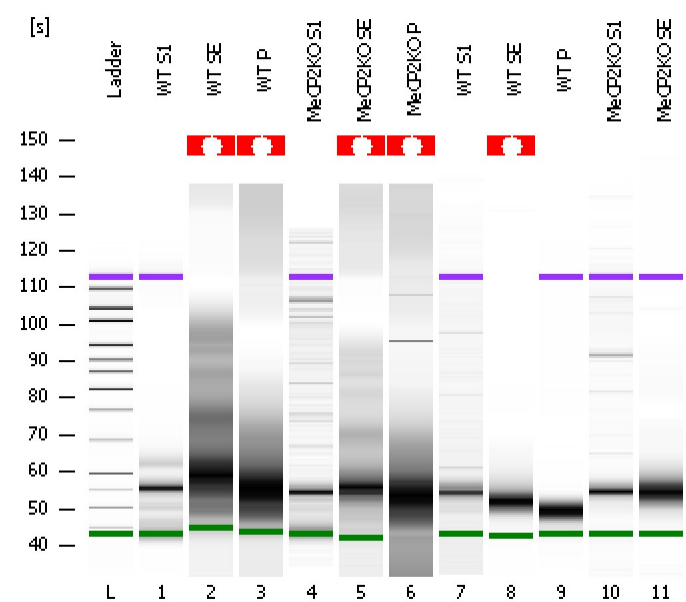


Assay Class: High Sensitivity DNA Assay
Data Path: C:\...ents and Settings\Bioanalyzer\2012-11-26\2012-11-26_002.xad

Created: 11/26/2012 1:11:51 PM
Modified: 11/26/2012 1:50:37 PM

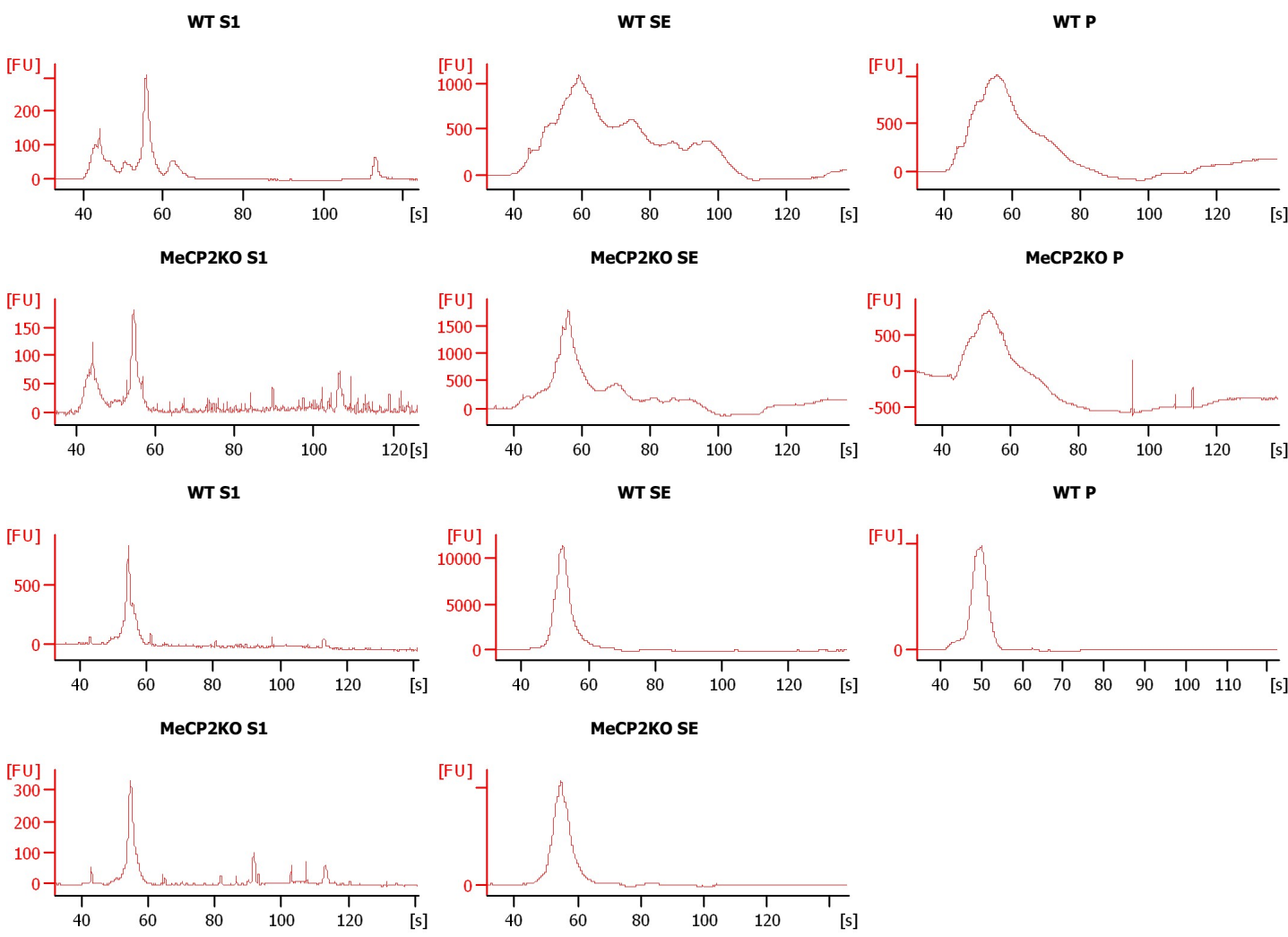
Electrophoresis File Run Summary



Instrument Information:
Instrument Name: DE13701086 Firmware: C.01.069
Serial#: DE13701086 Type: G2938B

Assay Information:
Assay Origin Path: C:\Program Files\Agilent\2100 bioanalyzer\2100 expert\assays\dsDNA\High Sensitivity DNA.xsy
Assay Class: High Sensitivity DNA Assay
Version: 1.03
Assay Comments: Copyright © 2003-2010 Agilent Technologies

Chip Information:
Chip Lot #: Reagent Kit Lot #: Chip Comments:



Assay Class: High Sensitivity DNA Assay
Data Path: C:\...ents and Settings\Bioanalyzer\2012-11-26\2012-11-26_002.xad

Created: 11/26/2012 1:11:51 PM
Modified: 11/26/2012 1:50:37 PM

Electrophoresis File Run Summary (Chip Summary)

Sample Name	Sample Comment	Rest. Digest	Status	Observation	Result Label	Result Color
WT S1		<input type="checkbox"/>	✓			
WT SE		<input type="checkbox"/>	✓			
WT P		<input type="checkbox"/>	✓			
MeCP2KO S1		<input type="checkbox"/>	✓			
MeCP2KO SE		<input type="checkbox"/>	✓			
MeCP2KO P		<input type="checkbox"/>	✓			
WT S1		<input type="checkbox"/>	✓			
WT SE		<input type="checkbox"/>	✓			
WT P		<input type="checkbox"/>	✓			
MeCP2KO S1		<input type="checkbox"/>	✓			
MeCP2KO SE		<input type="checkbox"/>	✓			
Ladder		<input type="checkbox"/>	✓			

Chip Lot #

Reagent Kit Lot #

Chip Comments :

Assay Class: High Sensitivity DNA Assay
Data Path: C:\...ents and Settings\Bioanalyzer\2012-11-26\2012-11-26_002.xad

Created: 11/26/2012 1:11:51 PM
Modified: 11/26/2012 1:50:37 PM

Electrophoresis Assay Details

General Analysis Settings

Number of Available Sample and Ladder Wells (Max.) : 12
Minimum Visible Range [s] : 32
Maximum Visible Range [s] : 138
Start Analysis Time Range [s] : 33
End Analysis Time Range [s] : 137.5
Ladder Concentration [pg/ μ l] : 1950
Uses Standard Area for Ladder Fragments
Lower Marker Concentration [pg/ μ l] : 125
Upper Marker Concentration [pg/ μ l] : 75
Used Upper Marker for Quantitation
Standard Curve Fit is Point to Point
Show Data Aligned to Lower and Upper Marker

Integrator Settings

Integration Start Time [s] : 33.05
Integration End Time [s] : 137
Slope Threshold : 0.8
Height Threshold [FU] : 5
Area Threshold : 0.1
Width Threshold [s] : 0.6
Baseline Plateau [s] : 0.5

Filter Settings

Filter Width [s] : 0.5
Polynomial Order : 4

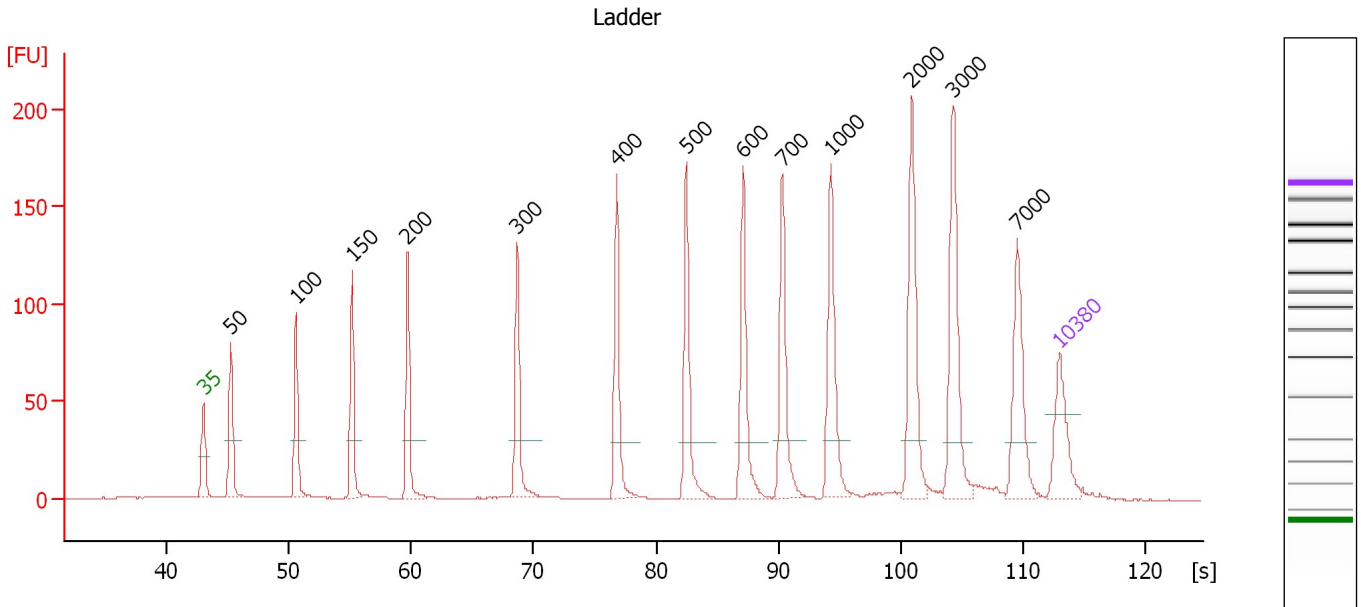
Ladder

Ladder Peak	Size	Area
1	35	160
2	50	210
3	100	208
4	150	221
5	200	242
6	300	270
7	400	305
8	500	306
9	600	336
10	700	321
11	1000	366
12	2000	413
13	3000	411
14	7000	400
15	10380	214

Assay Class: High Sensitivity DNA Assay
 Data Path: C:\...ents and Settings\Bioanalyzer\2012-11-26\2012-11-26_002.xad

Created: 11/26/2012 1:11:51 PM
 Modified: 11/26/2012 1:50:37 PM

Electropherogram Summary



Overall Results for Ladder

Noise: 0.2

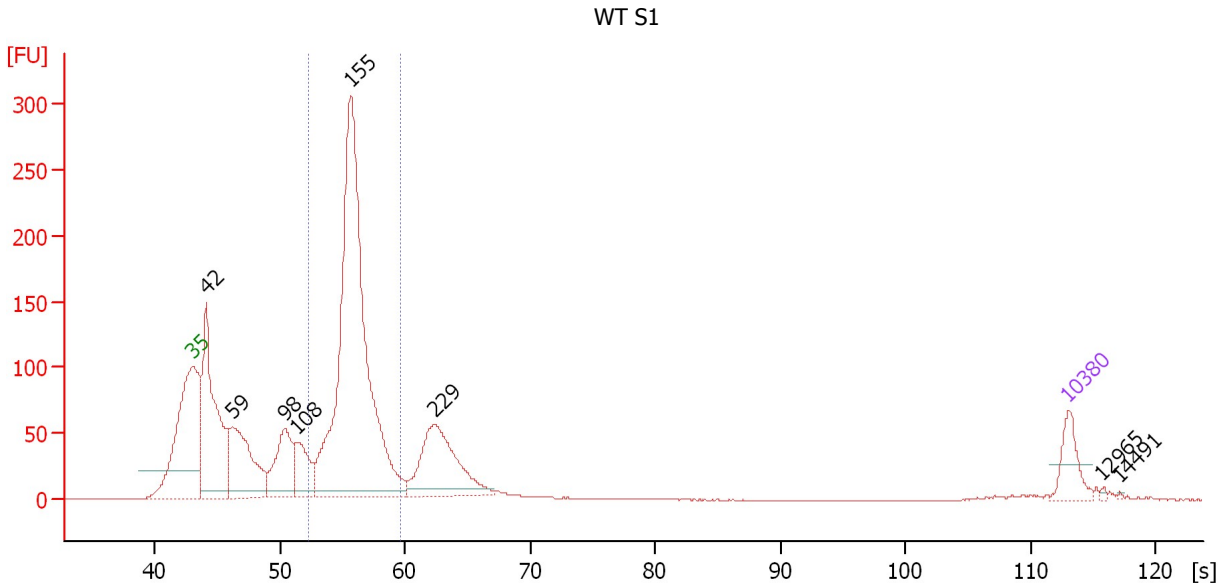
Peak table for Ladder

Peak	Size [bp]	Conc. [pg/µl]	Molarity [pmol/l]	Observations
1	35	125.00	5,411.3	Lower Marker
2	50	150.00	4,545.5	Ladder Peak
3	100	150.00	2,272.7	Ladder Peak
4	150	150.00	1,515.2	Ladder Peak
5	200	150.00	1,136.4	Ladder Peak
6	300	150.00	757.6	Ladder Peak
7	400	150.00	568.2	Ladder Peak
8	500	150.00	454.5	Ladder Peak
9	600	150.00	378.8	Ladder Peak
10	700	150.00	324.7	Ladder Peak
11	1,000	150.00	227.3	Ladder Peak
12	2,000	150.00	113.6	Ladder Peak
13	3,000	150.00	75.8	Ladder Peak
14	7,000	150.00	32.5	Ladder Peak
15	10,380	75.00	10.9	Upper Marker

Assay Class: High Sensitivity DNA Assay
 Data Path: C:\...ents and Settings\Bioanalyzer\2012-11-26\2012-11-26_002.xad

Created: 11/26/2012 1:11:51 PM
 Modified: 11/26/2012 1:50:37 PM

Electropherogram Summary Continued ...



Overall Results for sample 1 : WT S1

Number of peaks found: 8 Corr. Area 1: 1,414.0
 Noise: 0.2

Peak table for sample 1 : WT S1

Peak	Size [bp]	Conc. [pg/μl]	Molarity [pmol/l]	Observations
1	35	125.00	5,411.3	Lower Marker
2	42	818.75	29,402.8	
3	59	460.05	11,848.6	
4	98	295.42	4,547.4	
5	108	197.34	2,757.4	
6	155	2,160.38	21,104.4	
7	229	445.47	2,943.6	
8	10,380	75.00	10.9	Upper Marker
9	12,965	0.00	0.0	
10	14,491	0.00	0.0	

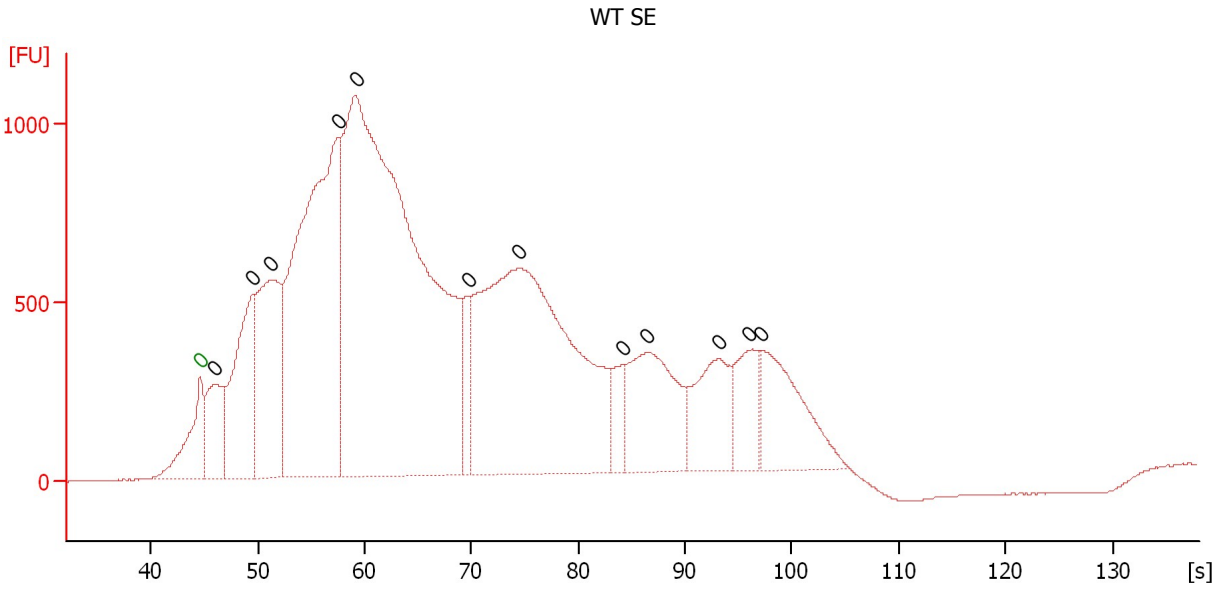
Region table for sample 1 : WT S1

From [s]	To [s]	Average Size [bp]	Molarity [pmol/l]	Conc. [pg/μl]	Corr. Area % of Total	Size distribution in CV [%]	Color
52.26	59.55	157	21,402.2	2,205.36	1,414.0 49	9.5	Blue

Assay Class: High Sensitivity DNA Assay
 Data Path: C:\...ents and Settings\Bioanalyzer\2012-11-26\2012-11-26_002.xad

Created: 11/26/2012 1:11:51 PM
 Modified: 11/26/2012 1:50:37 PM

Electropherogram Summary Continued ...



Overall Results for sample 2 : WT SE

Number of peaks found: 12 Noise: 0.8

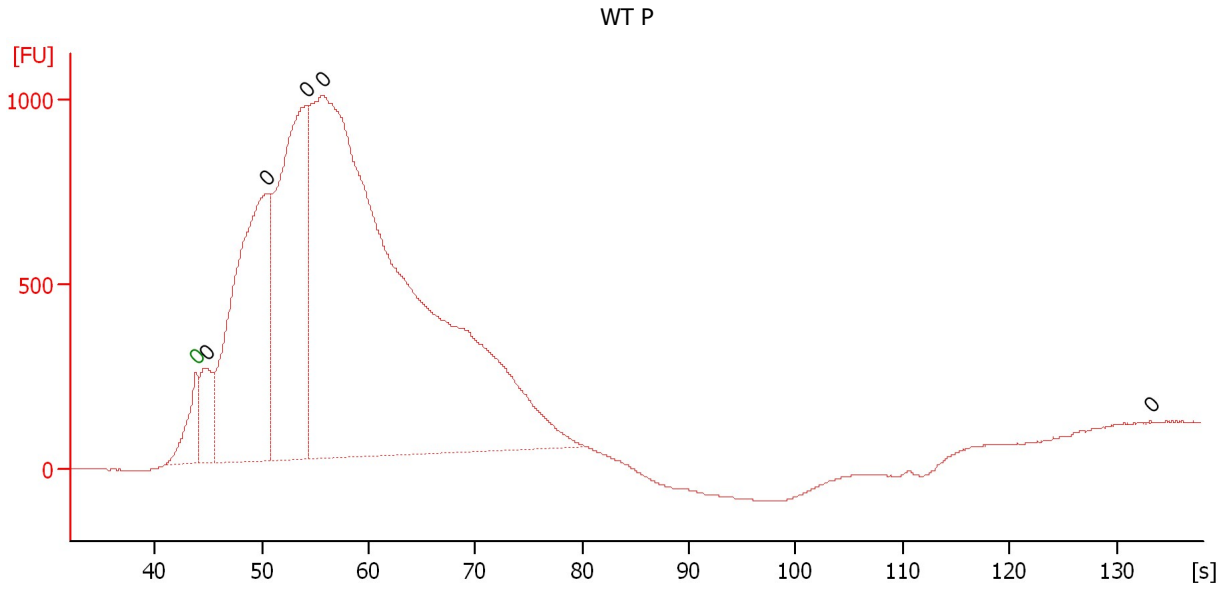
Peak table for sample 2 : WT SE

Peak	Size [bp]	Conc. [pg/μl]	Molarity [pmol/l]	Observations
1	0	0.00	0.0	Lower Marker
2	0	0.00	0.0	
3	0	0.00	0.0	
4	0	0.00	0.0	
5	0	0.00	0.0	
6	0	0.00	0.0	
7	0	0.00	0.0	
8	0	0.00	0.0	
9	0	0.00	0.0	
10	0	0.00	0.0	
11	0	0.00	0.0	
12	0	0.00	0.0	
13	0	0.00	0.0	

Assay Class: High Sensitivity DNA Assay
Data Path: C:\...ents and Settings\Bioanalyzer\2012-11-26\2012-11-26_002.xad

Created: 11/26/2012 1:11:51 PM
Modified: 11/26/2012 1:50:37 PM

Electropherogram Summary Continued ...



Overall Results for sample 3 : WT P

Number of peaks found: 5 Noise: 1.6

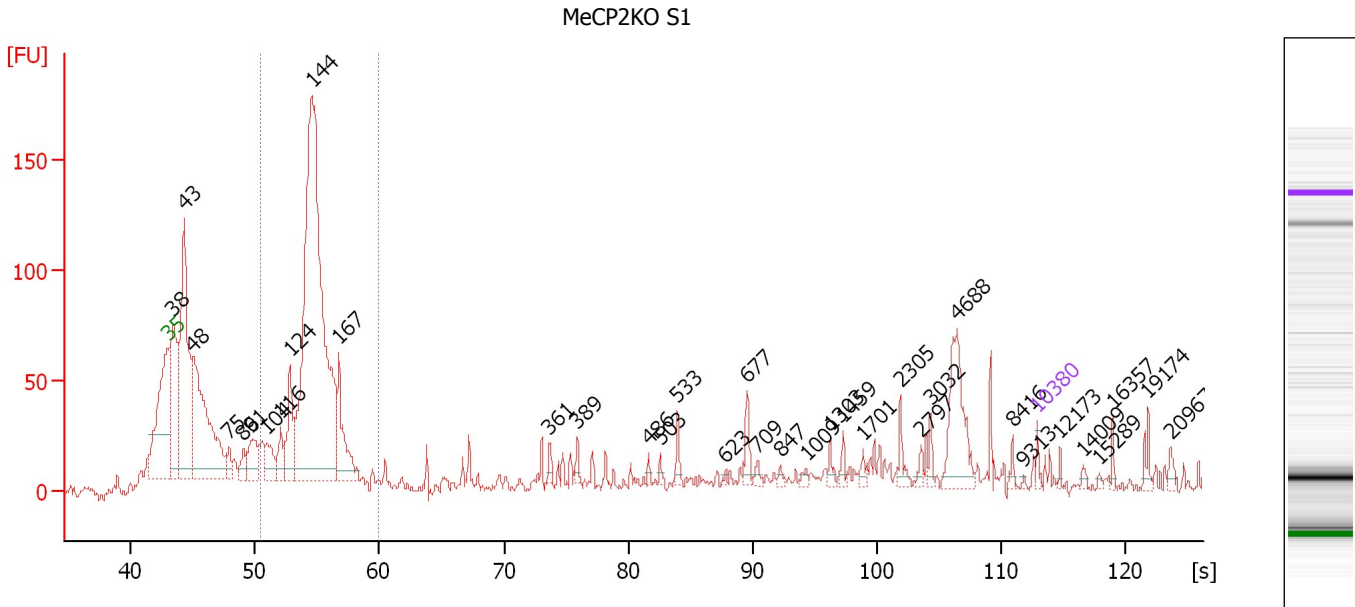
Peak table for sample 3 : WT P

Peak	Size [bp]	Conc. [pg/μl]	Molarity [pmol/l]	Observations
1	0	0.00	0.0	Lower Marker
2	0	0.00	0.0	
3	0	0.00	0.0	
4	0	0.00	0.0	
5	0	0.00	0.0	
6	0	0.00	0.0	

Assay Class: High Sensitivity DNA Assay
 Data Path: C:\...ents and Settings\Bioanalyzer\2012-11-26\2012-11-26_002.xad

Created: 11/26/2012 1:11:51 PM
 Modified: 11/26/2012 1:50:37 PM

Electropherogram Summary Continued ...



Overall Results for sample 4 : MeCP2KO S1

Number of peaks found: 36 Corr. Area 1: 862.0
 Noise: 3.6

Peak table for sample 4 : MeCP2KO S1

Peak	Size [bp]	Conc. [pg/μl]	Molarity [pmol/l]	Observations
1	35	125.00	5,411.3	Lower Marker
2	38	2,985.89	120,296.1	
3	43	4,884.02	170,496.3	
4	48	4,704.89	149,292.7	
5	75	330.48	6,682.9	
6	86	326.32	5,782.0	
7	91	822.55	13,663.9	
8	104	639.42	9,320.4	
9	116	460.17	6,003.2	
10	124	1,084.86	13,243.3	
11	144	12,788.63	134,727.6	
12	167	1,414.95	12,827.1	
13	361	119.49	501.0	
14	389	111.34	433.6	
15	486	57.74	180.1	
16	503	66.65	200.7	
17	533	175.36	498.5	
18	623	32.17	78.3	
19	677	252.04	564.3	
20	709	86.87	185.6	
21	847	60.93	109.0	
22	1,009	61.49	92.3	
23	1,303	103.12	119.9	
24	1,459	82.80	86.0	
25	1,701	81.33	72.5	
26	2,305	160.83	105.7	

Assay Class: High Sensitivity DNA Assay
 Data Path: C:\...ents and Settings\Bioanalyzer\2012-11-26\2012-11-26_002.xad


Created: 11/26/2012 1:11:51 PM
 Modified: 11/26/2012 1:50:37 PM

Electropherogram Summary Continued ...

... Peak table for sample 4 : MeCP2KO S1

Peak	Size [bp]	Conc. [pg/µl]	Molarity [pmol/l]	Observations
27	2,797	93.47	50.6	
28	3,032	103.36	51.6	
29	4,688	1,019.67	329.6	
30	8,416	72.46	13.0	
31	9,313	16.06	2.6	
32	10,380	75.00	10.9	Upper Marker
33	12,173	0.00	0.0	
34	14,009	0.00	0.0	
35	15,289	0.00	0.0	
36	16,357	0.00	0.0	
37	19,174	0.00	0.0	
38	20,967	0.00	0.0	

Region table for sample 4 : MeCP2KO S1

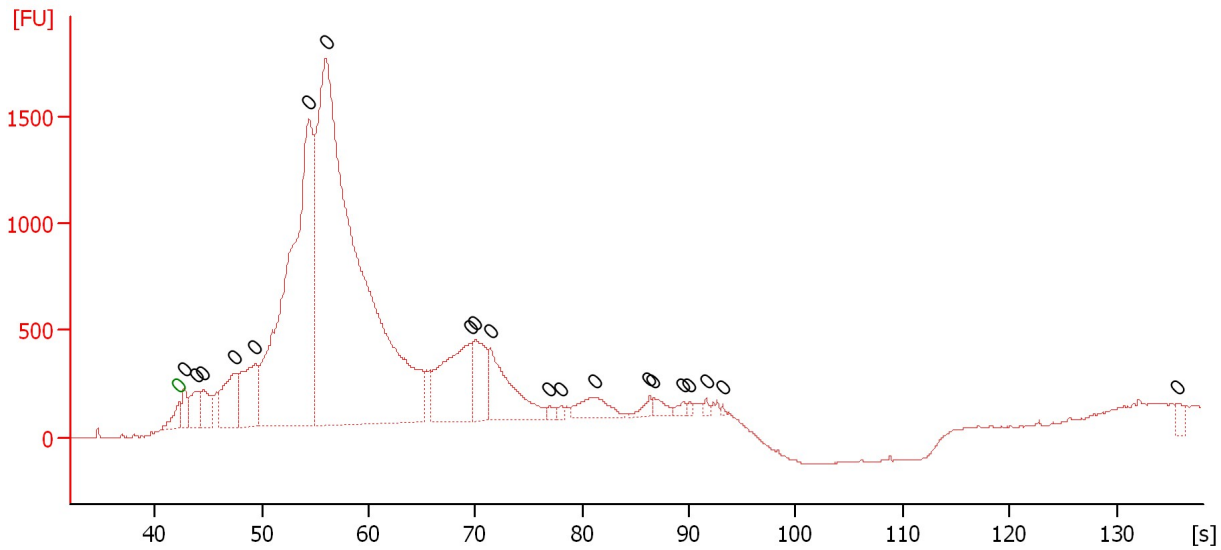
From [s]	To [s]	Average Size [bp]	Molarity [pmol/l]	Conc. [pg/µl]	Corr. Area % of Total	Size distribution in CV [%]	Color	
50.36	59.99	144	189,455.5	17,792.34	862.0	42	12.1	

Assay Class: High Sensitivity DNA Assay
 Data Path: C:\...ents and Settings\Bioanalyzer\2012-11-26\2012-11-26_002.xad

Created: 11/26/2012 1:11:51 PM
 Modified: 11/26/2012 1:50:37 PM

Electropherogram Summary Continued ...

MeCP2KO SE



Overall Results for sample 5 : MeCP2KO SE

Number of peaks found: 20 Noise: 1.5

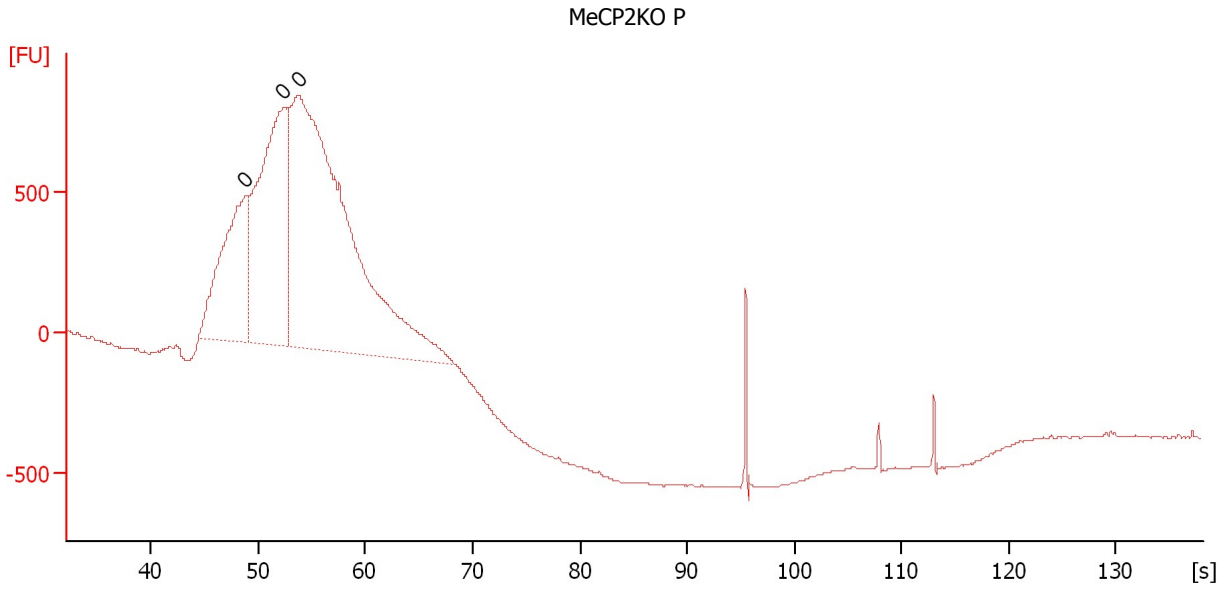
Peak table for sample 5 : MeCP2KO SE

Peak	Size [bp]	Conc. [pg/μl]	Molarity [pmol/l]	Observations
1	0	0.00	0.0	Lower Marker
2	0	0.00	0.0	
3	0	0.00	0.0	
4	0	0.00	0.0	
5	0	0.00	0.0	
6	0	0.00	0.0	
7	0	0.00	0.0	
8	0	0.00	0.0	
9	0	0.00	0.0	
10	0	0.00	0.0	
11	0	0.00	0.0	
12	0	0.00	0.0	
13	0	0.00	0.0	
14	0	0.00	0.0	
15	0	0.00	0.0	
16	0	0.00	0.0	
17	0	0.00	0.0	
18	0	0.00	0.0	
19	0	0.00	0.0	
20	0	0.00	0.0	
21	0	0.00	0.0	

Assay Class: High Sensitivity DNA Assay
Data Path: C:\...ents and Settings\Bioanalyzer\2012-11-26\2012-11-26_002.xad

Created: 11/26/2012 1:11:51 PM
Modified: 11/26/2012 1:50:37 PM

Electropherogram Summary Continued ...



Overall Results for sample 6 : MeCP2KO P

Number of peaks found: 0 Noise: 1.2

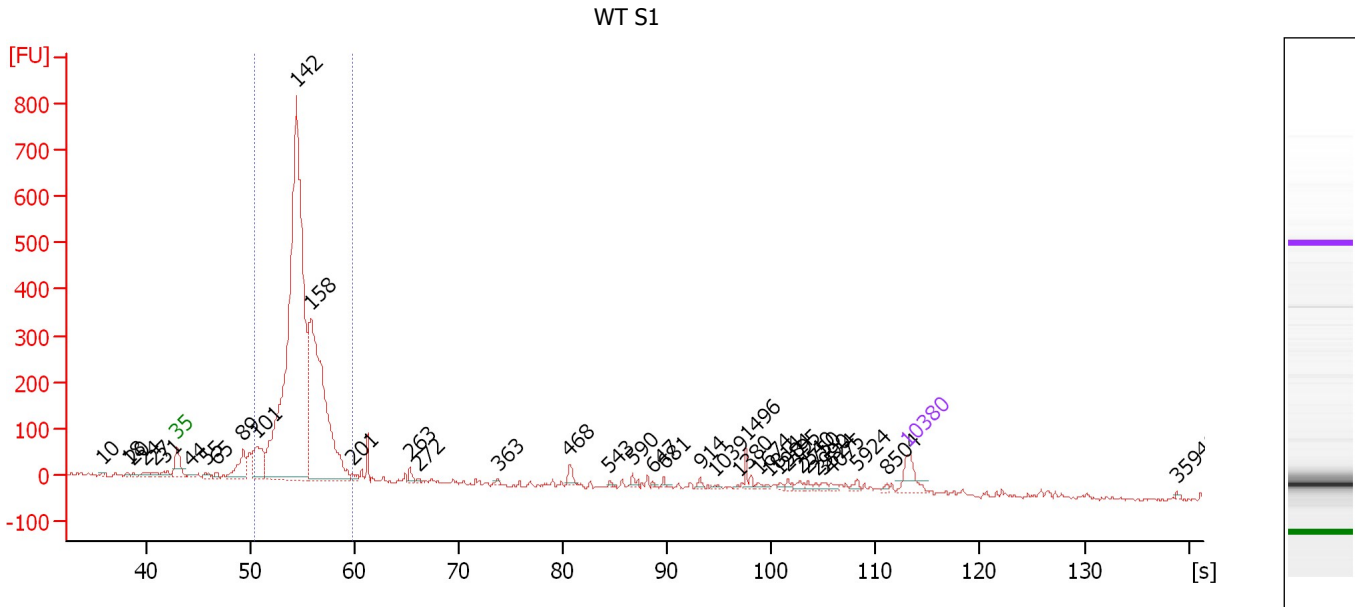
Peak table for sample 6 : MeCP2KO P

Peak	Size [bp]	Conc. [pg/µl]	Molarity [pmol/l]	Observations
1	0	0.00	0.0	
2	0	0.00	0.0	
3	0	0.00	0.0	

Assay Class: High Sensitivity DNA Assay
 Data Path: C:\...ents and Settings\Bioanalyzer\2012-11-26\2012-11-26_002.xad

Created: 11/26/2012 1:11:51 PM
 Modified: 11/26/2012 1:50:37 PM

Electropherogram Summary Continued ...



Overall Results for sample 7 : WT S1

Number of peaks found: 38 Corr. Area 1: 3,650.1
 Noise: 4.9

Peak table for sample 7 : WT S1

Peak	Size [bp]	Conc. [pg/μl]	Molarity [pmol/l]	Observations
1	10	0.00	0.0	
2	18	0.00	0.0	
3	20	0.00	0.0	
4	24	0.00	0.0	
5	27	0.00	0.0	
6	31	0.00	0.0	
7	35	125.00	5,411.3	Lower Marker
8	44	20.74	709.5	
9	55	25.40	699.2	
10	65	21.43	501.8	
11	89	189.32	3,226.8	
12	101	266.27	3,989.2	
13	142	3,825.78	40,714.1	
14	158	1,774.10	17,059.8	
15	201	24.77	186.4	
16	263	24.14	139.1	
17	272	6.81	38.0	
18	363	7.56	31.6	
19	468	33.86	109.6	
20	543	6.08	17.0	
21	590	16.86	43.3	
22	647	4.77	11.2	
23	681	9.62	21.4	
24	914	11.28	18.7	
25	1,039	4.85	7.1	
26	1,380	3.10	3.4	

Assay Class: High Sensitivity DNA Assay
 Data Path: C:\...ents and Settings\Bioanalyzer\2012-11-26\2012-11-26_002.xad


Created: 11/26/2012 1:11:51 PM
 Modified: 11/26/2012 1:50:37 PM

Electropherogram Summary Continued ...

... Peak table for sample 7 : WT S1

Peak	Size [bp]	Conc. [pg/μl]	Molarity [pmol/l]	Observations
27	1,496	31.92	32.3	
28	1,674	8.38	7.6	
29	1,814	5.35	4.5	
30	1,984	7.08	5.4	
31	2,195	11.47	7.9	
32	2,540	13.67	8.2	
33	2,750	8.50	4.7	
34	2,990	6.97	3.5	
35	3,524	11.97	5.1	
36	4,075	9.51	3.5	
37	5,924	14.88	3.8	
38	8,504	7.05	1.3	
39	10,380	75.00	10.9	Upper Marker
40	35,940	0.00	0.0	

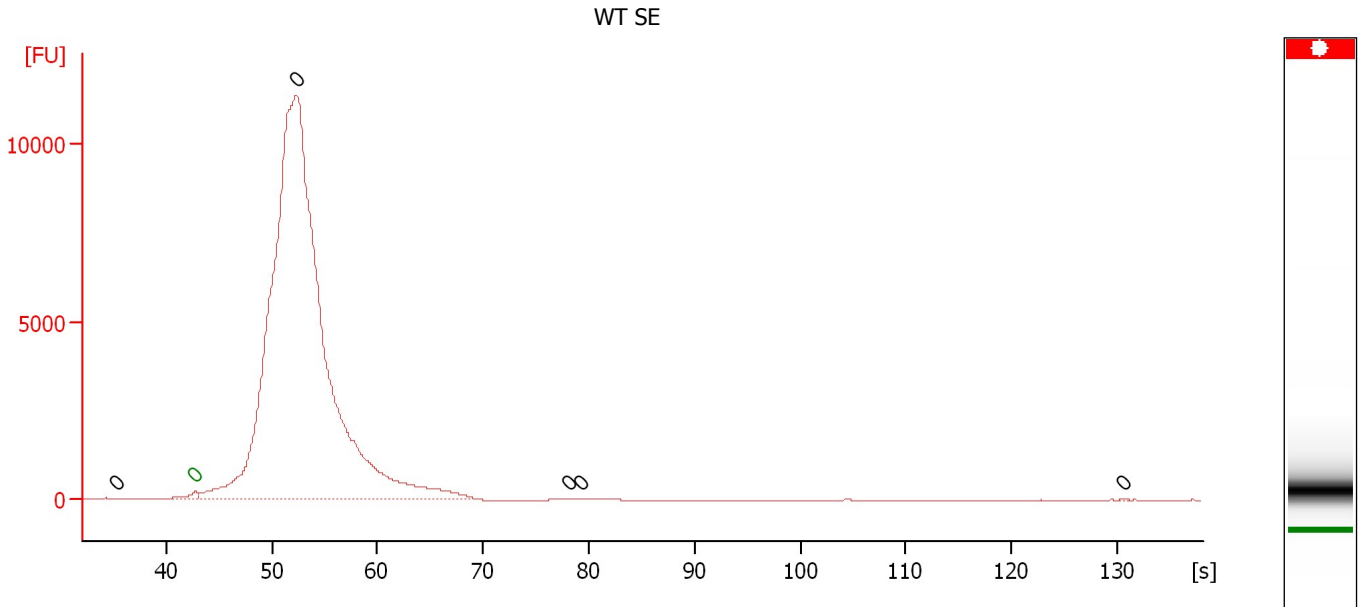
Region table for sample 7 : WT S1

From [s]	To [s]	Average Size [bp]	Molarity [pmol/l]	Conc. [pg/μl]	Corr. Area % of Total	Size distribution in CV [%]	Color	
50.38	59.90	147	59,958.2	5,733.96	3,650.1	85	12.4	

Assay Class: High Sensitivity DNA Assay
Data Path: C:\...ents and Settings\Bioanalyzer\2012-11-26\2012-11-26_002.xad

Created: 11/26/2012 1:11:51 PM
Modified: 11/26/2012 1:50:37 PM

Electropherogram Summary Continued ...



Overall Results for sample 8 : WT SE

Number of peaks found: 5 Noise: 1.9

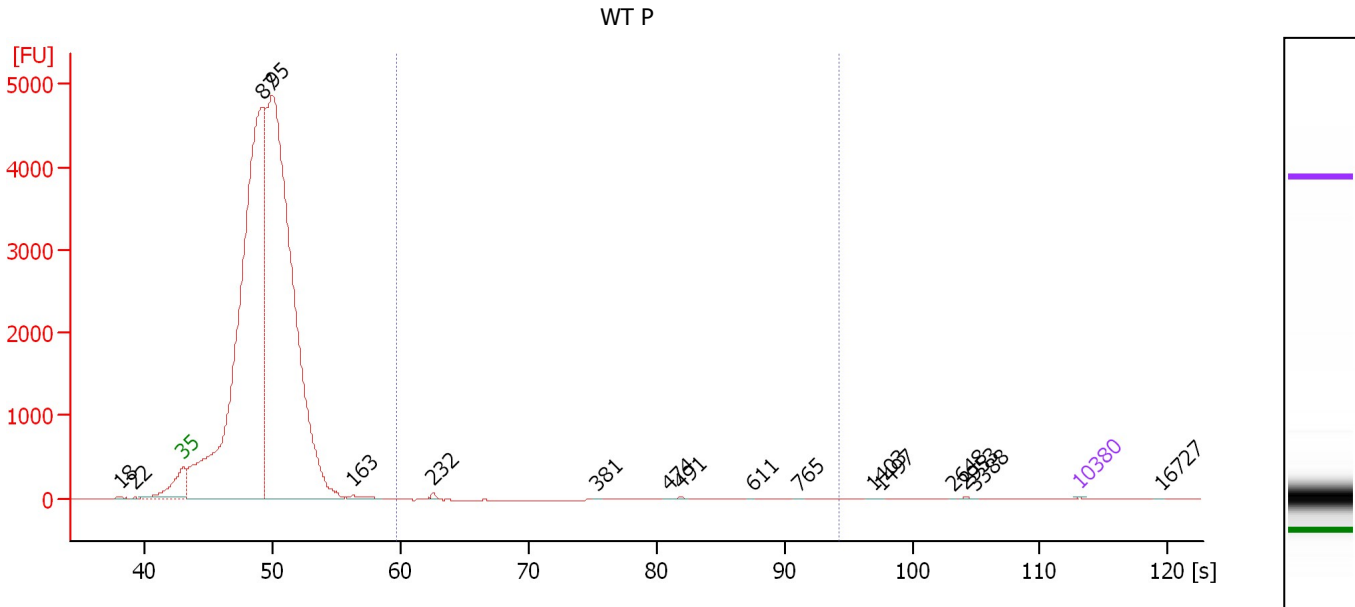
Peak table for sample 8 : WT SE

Peak	Size [bp]	Conc. [pg/μl]	Molarity [pmol/l]	Observations
1	0	0.00	0.0	
2	0	0.00	0.0	Lower Marker
3	0	0.00	0.0	
4	0	0.00	0.0	
5	0	0.00	0.0	
6	0	0.00	0.0	

Assay Class: High Sensitivity DNA Assay
 Data Path: C:\...ents and Settings\Bioanalyzer\2012-11-26\2012-11-26_002.xad

Created: 11/26/2012 1:11:51 PM
 Modified: 11/26/2012 1:50:37 PM

Electropherogram Summary Continued ...



Overall Results for sample 9 : WT P

Number of peaks found: 17 Corr. Area 1: 76.6
 Noise: 1.5

Peak table for sample 9 : WT P

Peak	Size [bp]	Conc. [pg/μl]	Molarity [pmol/l]	Observations
1	18	0.00	0.0	
2	22	0.00	0.0	
3	35	125.00	5,411.3	Lower Marker
4	87	396,842.47	6,904,040.0	
5	95	411,789.63	6,598,342.0	
6	163	1,397.77	13,007.8	
7	232	619.54	4,050.3	
8	381	54.93	218.3	
9	474	27.13	86.7	
10	491	185.08	571.2	
11	611	19.36	48.0	
12	765	34.29	67.9	
13	1,403	34.94	37.7	
14	1,497	28.74	29.1	
15	2,648	18.72	10.7	
16	2,953	126.96	65.1	
17	3,388	14.34	6.4	
18	10,380	75.00	10.9	Upper Marker
19	16,727	0.00	0.0	

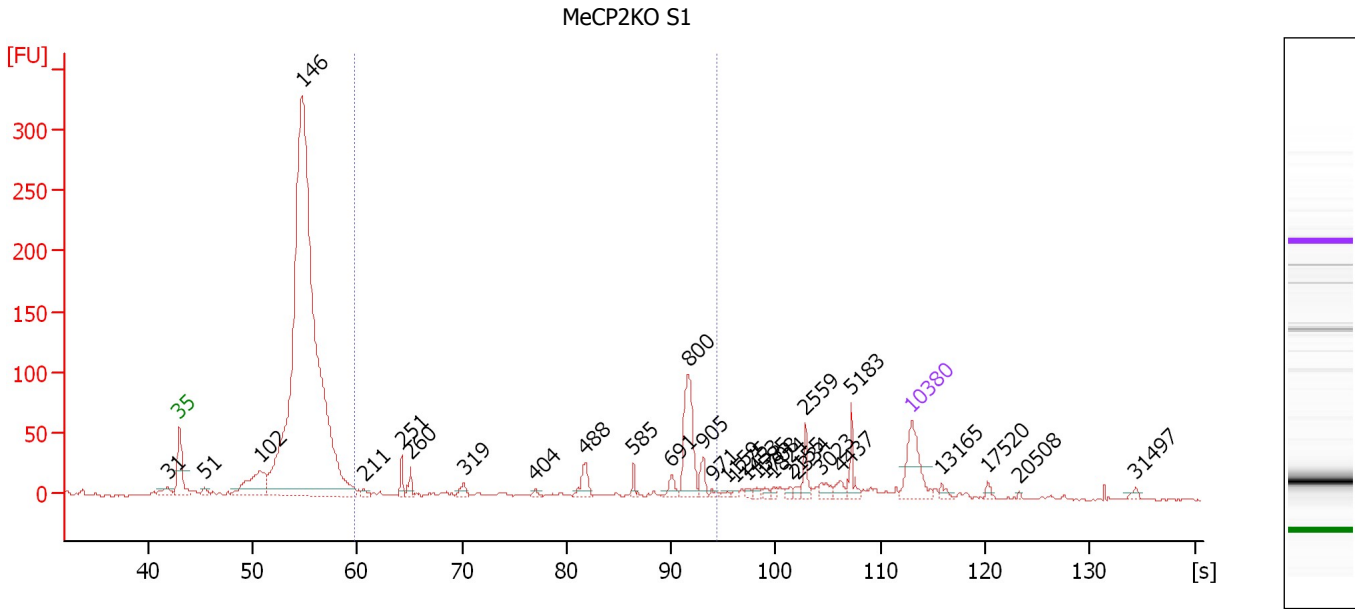
Region table for sample 9 : WT P

From [s]	To [s]	Average Size [bp]	Molarity [pmol/l]	Conc. [pg/μl]	Corr. Area % of Total	Size distribution in CV [%]	Color
59.69	94.29	351	4,844.3	883.37	76.6	0	43.5

Assay Class: High Sensitivity DNA Assay
 Data Path: C:\...ents and Settings\Bioanalyzer\2012-11-26\2012-11-26_002.xad

Created: 11/26/2012 1:11:51 PM
 Modified: 11/26/2012 1:50:37 PM

Electropherogram Summary Continued ...



Overall Results for sample 10 : MeCP2KO S1

Number of peaks found: 31 Corr. Area 1: 291.7
 Noise: 0.5

Peak table for sample 10 : MeCP2KO S1

Peak	Size [bp]	Conc. [pg/μl]	Molarity [pmol/l]	Observations
1	31	0.00	0.0	
2	35	125.00	5,411.3	Lower Marker
3	51	14.70	435.6	
4	102	159.55	2,367.2	
5	146	2,675.39	27,854.1	
6	211	9.18	66.0	
7	251	22.53	136.2	
8	260	18.94	110.5	
9	319	15.80	75.1	
10	404	6.50	24.4	
11	488	36.57	113.6	
12	585	11.84	30.7	
13	691	19.54	42.8	
14	800	131.78	249.7	
15	905	23.40	39.2	
16	971	5.81	9.1	
17	1,159	5.10	6.7	
18	1,275	4.49	5.3	
19	1,453	5.13	5.3	
20	1,585	6.60	6.3	
21	1,708	5.51	4.9	
22	1,824	5.82	4.8	
23	2,155	6.03	4.2	
24	2,334	6.63	4.3	
25	2,559	21.95	13.0	
26	3,023	14.47	7.3	

Assay Class: High Sensitivity DNA Assay
 Data Path: C:\...ents and Settings\Bioanalyzer\2012-11-26\2012-11-26_002.xad


Created: 11/26/2012 1:11:51 PM
 Modified: 11/26/2012 1:50:37 PM

Electropherogram Summary Continued ...

... Peak table for sample 10 : MeCP2KO S1

Peak	Size [bp]	Conc. [pg/μl]	Molarity [pmol/l]	Observations
27	4,437	14.43	4.9	
28	5,183	25.57	7.5	
29	10,380	75.00	10.9	Upper Marker
30	13,165	0.00	0.0	
31	17,520	0.00	0.0	
32	20,508	0.00	0.0	
33	31,497	0.00	0.0	

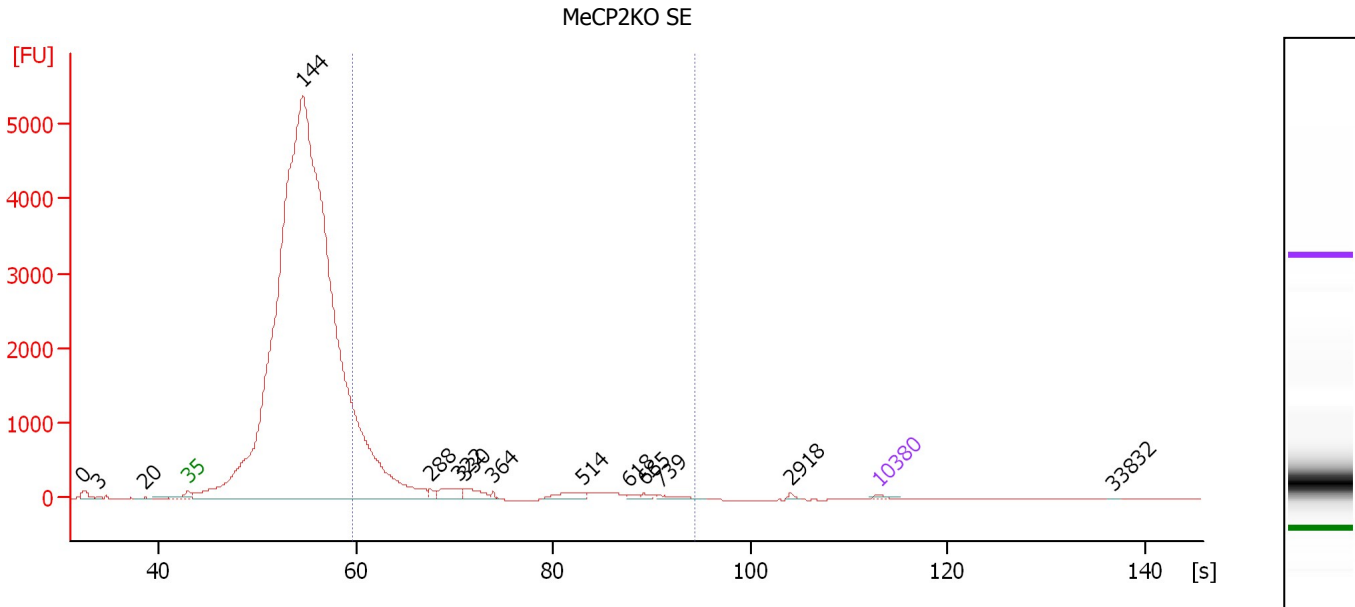
Region table for sample 10 : MeCP2KO S1

From [s]	To [s]	Average Size [bp]	Molarity [pmol/l]	Conc. [pg/μl]	Corr. Area % of Total	Size distribution in CV [%]	Color	
59.69	94.29	626	1,277.3	383.49	291.7	14	36.3	

Assay Class: High Sensitivity DNA Assay
 Data Path: C:\...ents and Settings\Bioanalyzer\2012-11-26\2012-11-26_002.xad

Created: 11/26/2012 1:11:51 PM
 Modified: 11/26/2012 1:50:37 PM

Electropherogram Summary Continued ...



Overall Results for sample 11 : MeCP2KO SE

Number of peaks found: 14 Corr. Area 1: 6,293.0
 Noise: 0.6

Peak table for sample 11 : MeCP2KO SE

Peak	Size [bp]	Conc. [pg/μl]	Molarity [pmol/l]	Observations
1	0	0.00	0.0	
2	3	0.00	0.0	
3	20	0.00	0.0	
4	35	125.00	5,411.3	Lower Marker
5	144	131,253.05	1,378,064.9	
6	288	254.51	1,337.8	
7	322	744.75	3,501.1	
8	330	650.65	2,990.7	
9	364	82.50	343.2	
10	514	494.85	1,459.6	
11	618	114.31	280.2	
12	665	97.39	221.7	
13	739	177.02	362.8	
14	2,918	54.77	28.4	
15	10,380	75.00	10.9	Upper Marker
16	33,832	0.00	0.0	

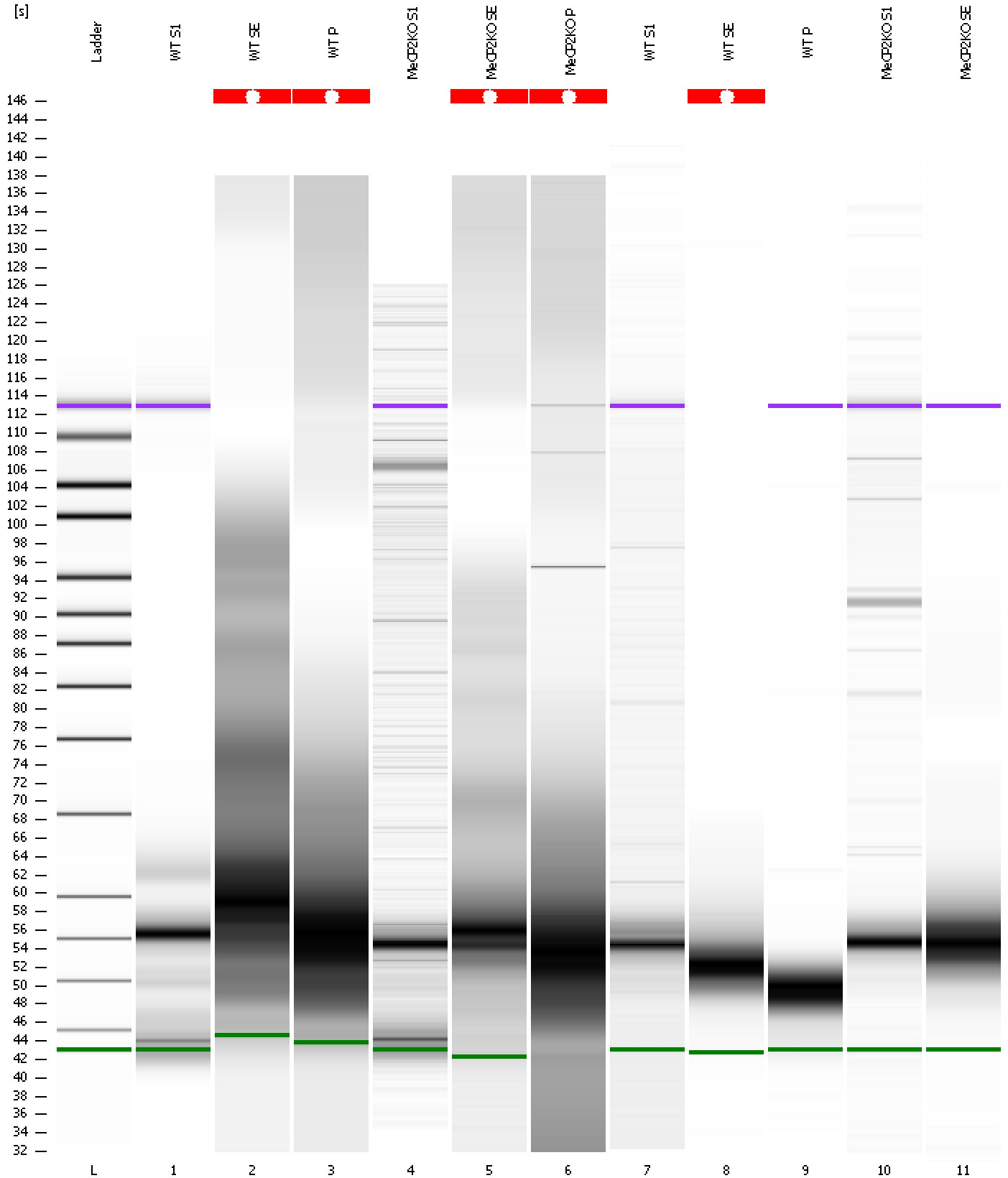
Region table for sample 11 : MeCP2KO SE

From [s]	To [s]	Average Size [bp]	Molarity [pmol/l]	Conc. [pg/μl]	Corr. Area % of Total	Size distribution in CV [%]	Color
59.69	94.29	284	70,027.4	11,368.54	6,293.0 10	43.6	Blue

Assay Class: High Sensitivity DNA Assay
Data Path: C:\...ents and Settings\Bioanalyzer\2012-11-26\2012-11-26_002.xad

Created: 11/26/2012 1:11:51 PM
Modified: 11/26/2012 1:50:37 PM

Gel Image



Assay Class: High Sensitivity DNA Assay
 Data Path: C:\...ents and Settings\Bioanalyzer\2012-11-26\2012-11-26_002.xad

Created: 11/26/2012 1:11:51 PM
 Modified: 11/26/2012 1:50:37 PM

Run Logbook

Description	Number	Source	Category	Sub Category	Time	Time Zone	User	Host
Run ended on port 1 (Number of wells acquired: 12)		Instrument	Run		11/26/2012 1:53:10 PM	(GMT --08:00) Pacific Standard Time	UC Davis	D8XSMGH1
Run started on port 1 (File: C:\Documents and Settings\Bioanalyzer\2012-11-26\2012-11-26_002.xad)		Instrument	Run		11/26/2012 1:11:56 PM	(GMT --08:00) Pacific Standard Time	UC Davis	D8XSMGH1
Product Number : G2938B		Instrument	Run		11/26/2012 1:11:56 PM	(GMT --08:00) Pacific Standard Time	UC Davis	D8XSMGH1
Name :		Instrument	Run		11/26/2012 1:11:56 PM	(GMT --08:00) Pacific Standard Time	UC Davis	D8XSMGH1
Vendor : Agilent Technologies		Instrument	Run		11/26/2012 1:11:56 PM	(GMT --08:00) Pacific Standard Time	UC Davis	D8XSMGH1
Serial# : DE13701086		Instrument	Run		11/26/2012 1:11:56 PM	(GMT --08:00) Pacific Standard Time	UC Davis	D8XSMGH1
Firmware : C.01.069		Instrument	Run		11/26/2012 1:11:56 PM	(GMT --08:00) Pacific Standard Time	UC Davis	D8XSMGH1
Cartridge : Electrode		Instrument	Run		11/26/2012 1:11:56 PM	(GMT --08:00) Pacific Standard Time	UC Davis	D8XSMGH1