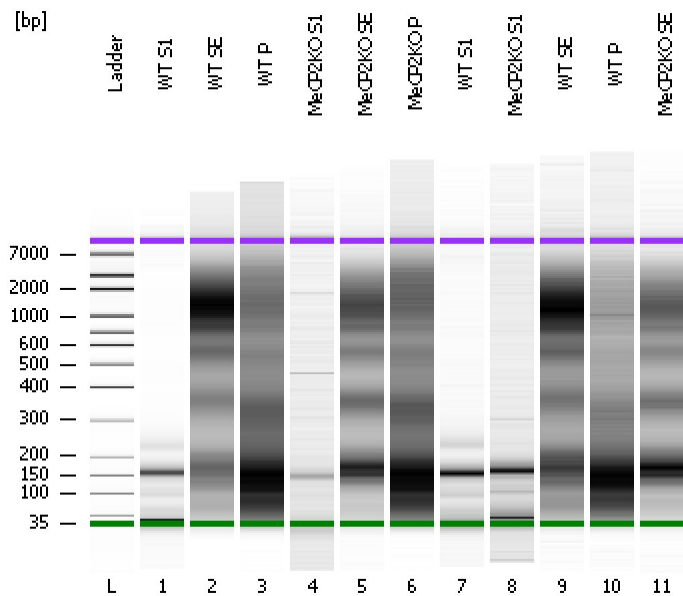


Assay Class: High Sensitivity DNA Assay  
Data Path: C:\...ents and Settings\Bioanalyzer\2012-11-26\2012-11-26\_004.xad

Created: 11/26/2012 4:02:00 PM  
Modified: 11/26/2012 4:43:26 PM

### Electrophoresis File Run Summary



#### Instrument Information:

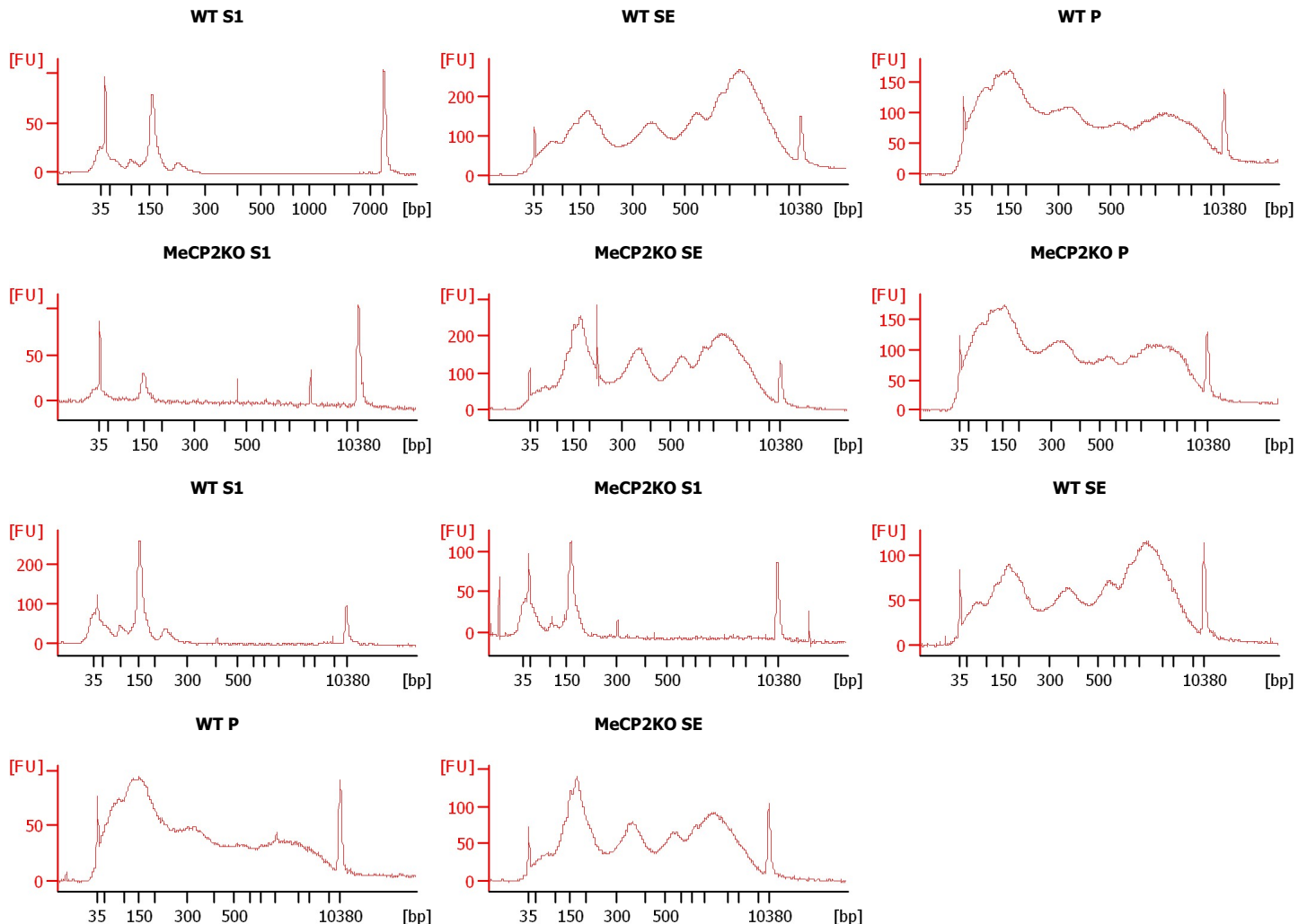
Instrument Name: DE13701086      Firmware: C.01.069  
Serial#: DE13701086      Type: G2938B

#### Assay Information:

Assay Origin Path: C:\Program Files\Agilent\2100 bioanalyzer\2100 expert\assays\dsDNA\High Sensitivity DNA.xsy  
Assay Class: High Sensitivity DNA Assay  
Version: 1.03  
Assay Comments: Copyright © 2003-2010 Agilent Technologies

#### Chip Information:

Chip Lot #:      Reagent Kit Lot #:      Chip Comments:



Assay Class: High Sensitivity DNA Assay  
 Data Path: C:\...ents and Settings\Bioanalyzer\2012-11-26\2012-11-26\_004.xad

Created: 11/26/2012 4:02:00 PM  
 Modified: 11/26/2012 4:43:26 PM

**Electrophoresis File Run Summary (Chip Summary)**

Sample Name	Sample Comment	Rest. Digest	Status	Observation	Result Label	Result Color
WT S1		<input type="checkbox"/>	✓			
WT SE		<input type="checkbox"/>	✓			
WT P		<input type="checkbox"/>	✓			
MeCP2KO S1		<input type="checkbox"/>	✓			
MeCP2KO SE		<input type="checkbox"/>	✓			
MeCP2KO P		<input type="checkbox"/>	✓			
WT S1		<input type="checkbox"/>	✓			
MeCP2KO S1		<input type="checkbox"/>	✓			
WT SE		<input type="checkbox"/>	✓			
WT P		<input type="checkbox"/>	✓			
MeCP2KO SE		<input type="checkbox"/>	✓			
Ladder		<input type="checkbox"/>	✓			

Chip Lot #

Reagent Kit Lot #

Chip Comments :

Assay Class: High Sensitivity DNA Assay  
Data Path: C:\...ents and Settings\Bioanalyzer\2012-11-26\2012-11-26\_004.xad

Created: 11/26/2012 4:02:00 PM  
Modified: 11/26/2012 4:43:26 PM

**Electrophoresis Assay Details**

**General Analysis Settings**

Number of Available Sample and Ladder Wells (Max.) : 12  
Minimum Visible Range [s] : 32  
Maximum Visible Range [s] : 138  
Start Analysis Time Range [s] : 33  
End Analysis Time Range [s] : 137.5  
Ladder Concentration [pg/μl] : 1950  
Uses Standard Area for Ladder Fragments  
Lower Marker Concentration [pg/μl] : 125  
Upper Marker Concentration [pg/μl] : 75  
Used Upper Marker for Quantitation  
Standard Curve Fit is Point to Point  
Show Data Aligned to Lower and Upper Marker

**Integrator Settings**

Integration Start Time [s] : 33.05  
Integration End Time [s] : 137  
Slope Threshold : 0.8  
Height Threshold [FU] : 5  
Area Threshold : 0.1  
Width Threshold [s] : 0.6  
Baseline Plateau [s] : 0.5

**Filter Settings**

Filter Width [s] : 0.5  
Polynomial Order : 4

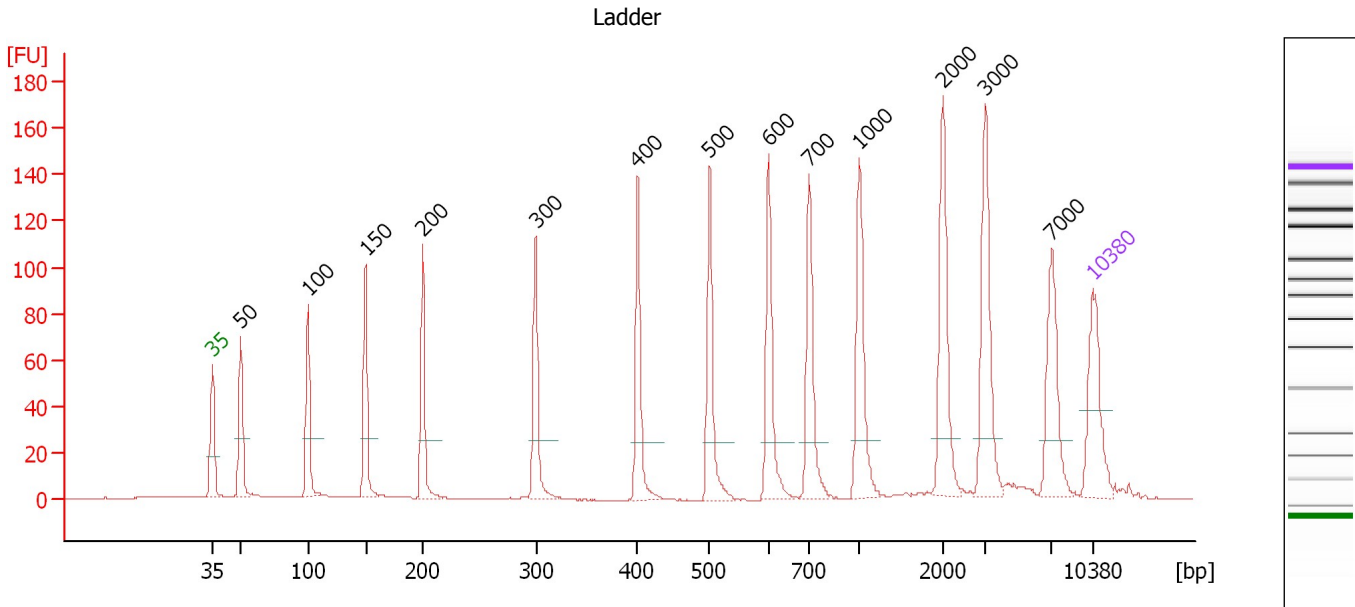
**Ladder**

Ladder Peak	Size	Area
1	35	160
2	50	210
3	100	208
4	150	221
5	200	242
6	300	270
7	400	305
8	500	306
9	600	336
10	700	321
11	1000	366
12	2000	413
13	3000	411
14	7000	400
15	10380	214

Assay Class: High Sensitivity DNA Assay  
 Data Path: C:\...ents and Settings\Bioanalyzer\2012-11-26\2012-11-26\_004.xad

Created: 11/26/2012 4:02:00 PM  
 Modified: 11/26/2012 4:43:26 PM

**Electropherogram Summary**



**Overall Results for Ladder**

Noise: 0.1

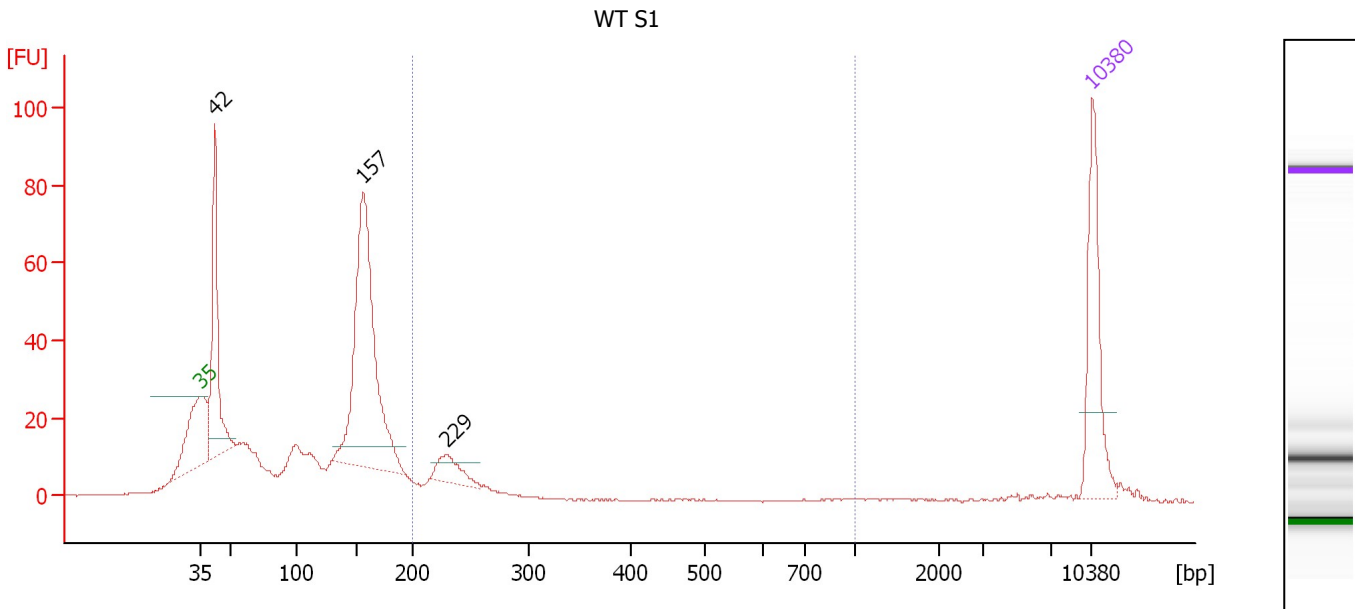
**Peak table for Ladder**

Peak	Size [bp]	Conc. [pg/μl]	Molarity [pmol/l]	Observations
1	35	125.00	5,411.3	Lower Marker
2	50	150.00	4,545.5	Ladder Peak
3	100	150.00	2,272.7	Ladder Peak
4	150	150.00	1,515.2	Ladder Peak
5	200	150.00	1,136.4	Ladder Peak
6	300	150.00	757.6	Ladder Peak
7	400	150.00	568.2	Ladder Peak
8	500	150.00	454.5	Ladder Peak
9	600	150.00	378.8	Ladder Peak
10	700	150.00	324.7	Ladder Peak
11	1,000	150.00	227.3	Ladder Peak
12	2,000	150.00	113.6	Ladder Peak
13	3,000	150.00	75.8	Ladder Peak
14	7,000	150.00	32.5	Ladder Peak
15	10,380	75.00	10.9	Upper Marker

Assay Class: High Sensitivity DNA Assay  
 Data Path: C:\...ents and Settings\Bioanalyzer\2012-11-26\2012-11-26\_004.xad

Created: 11/26/2012 4:02:00 PM  
 Modified: 11/26/2012 4:43:26 PM

**Electropherogram Summary Continued ...**



**Overall Results for sample 1 : WT S1**

Number of peaks found: 3                      Corr. Area 1: 69.6  
 Noise: 0.2

**Peak table for sample 1 : WT S1**

Peak	Size [bp]	Conc. [pg/μl]	Molarity [pmol/l]	Observations
1	35	125.00	5,411.3	Lower Marker
2	42	190.04	6,811.8	
3	157	368.34	3,561.4	
4	229	36.50	241.0	
5	10,380	75.00	10.9	Upper Marker

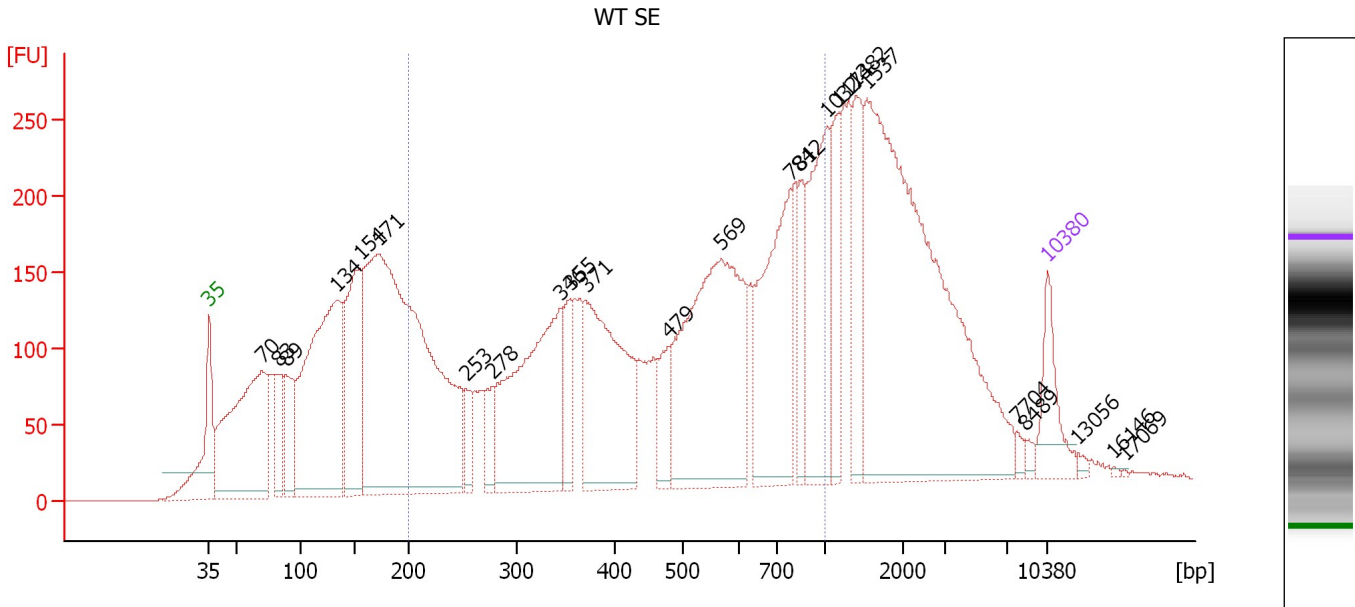
**Region table for sample 1 : WT S1**

From [bp]	To [bp]	Average Size [bp]	Molarity [pmol/l]	Conc. [pg/μl]	Corr. Area	% of Total	Size distribution in CV [%]	Color
200	1,000	241	576.7	89.93	69.6	9	26.2	Blue

Assay Class: High Sensitivity DNA Assay  
 Data Path: C:\...ents and Settings\Bioanalyzer\2012-11-26\2012-11-26\_004.xad

Created: 11/26/2012 4:02:00 PM  
 Modified: 11/26/2012 4:43:26 PM

**Electropherogram Summary Continued ...**



**Overall Results for sample 2 : WT SE**

Number of peaks found: 24                      Corr. Area 1: 5,216.5  
 Noise: 0.3

**Peak table for sample 2 : WT SE**

Peak	Size [bp]	Conc. [pg/μl]	Molarity [pmol/l]	Observations
1	35	125.00	5,411.3	Lower Marker
2	70	590.65	12,814.3	
3	83	113.56	2,078.8	
4	89	136.44	2,322.1	
5	134	741.33	8,388.7	
6	154	342.79	3,364.4	
7	171	1,476.18	13,074.3	
8	253	57.59	345.4	
9	278	64.90	353.3	
10	346	494.43	2,166.0	
11	355	87.32	373.0	
12	371	416.57	1,700.4	
13	479	81.91	259.0	
14	569	580.35	1,544.6	
15	781	328.17	636.5	
16	842	76.86	138.4	
17	1,032	254.49	373.6	
18	1,174	105.55	136.3	
19	1,382	123.95	135.8	
20	1,537	912.23	899.0	
21	7,704	9.38	1.8	
22	8,489	9.00	1.6	
23	10,380	75.00	10.9	Upper Marker
24	13,056	0.00	0.0	
25	16,146	0.00	0.0	
26	17,069	0.00	0.0	

Assay Class: High Sensitivity DNA Assay  
Data Path: C:\...ents and Settings\Bioanalyzer\2012-11-26\2012-11-26\_004.xad

Created: 11/26/2012 4:02:00 PM  
Modified: 11/26/2012 4:43:26 PM

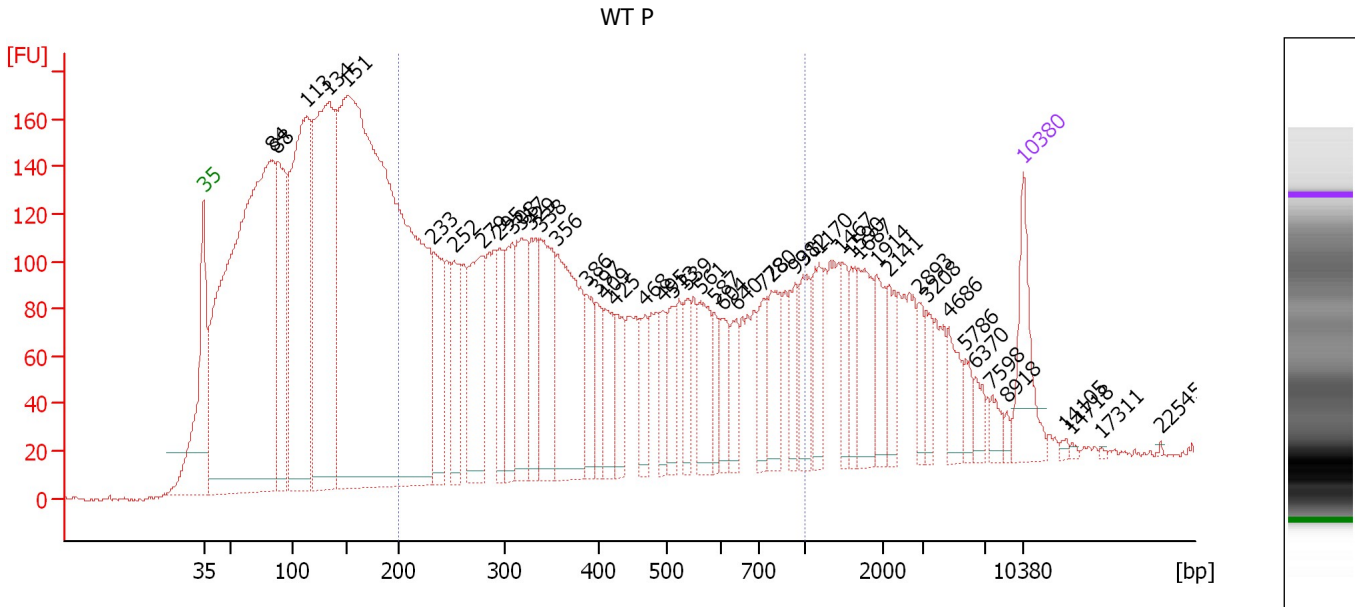
**Electropherogram Summary Continued ...****... Region table for sample 2 :      WT SE**

<b>From [bp]</b>	<b>To [bp]</b>	<b>Average Size [bp]</b>	<b>Molarity [pmol/l]</b>	<b>Conc. [pg/μl]</b>	<b>Corr. Area</b>	<b>% of Total</b>	<b>Size distribution in CV [%]</b>	<b>Co lor</b>
200	1,000	510	13,216.2	3,365.97	5,216.5	46	42.4	

Assay Class: High Sensitivity DNA Assay  
 Data Path: C:\...ents and Settings\Bioanalyzer\2012-11-26\2012-11-26\_004.xad

Created: 11/26/2012 4:02:00 PM  
 Modified: 11/26/2012 4:43:26 PM

**Electropherogram Summary Continued ...**



**Overall Results for sample 3 : WT P**

Number of peaks found: 47                      Corr. Area 1: 3,906.7  
 Noise: 1.0

**Peak table for sample 3 : WT P**

Peak	Size [bp]	Conc. [pg/μl]	Molarity [pmol/l]	Observations
1	35	125.00	5,411.3	Lower Marker
2	84	1,656.39	29,892.9	
3	88	331.62	5,723.2	
4	113	705.39	9,449.1	
5	134	747.00	8,446.6	
6	151	2,289.95	22,914.7	
7	233	158.58	1,033.3	
8	252	112.78	677.3	
9	279	206.84	1,124.7	
10	295	81.88	420.1	
11	308	111.17	547.3	
12	317	160.32	765.5	
13	329	102.05	470.6	
14	338	183.14	821.9	
15	356	264.83	1,128.5	
16	386	74.89	294.0	
17	397	51.71	197.2	
18	409	73.35	271.9	
19	425	70.06	249.9	
20	468	51.03	165.0	
21	495	41.91	128.3	
22	513	57.63	170.2	
23	539	51.27	144.1	
24	561	83.60	225.7	
25	587	37.95	97.9	
26	604	48.78	122.3	



Assay Class: High Sensitivity DNA Assay  
 Data Path: C:\...ents and Settings\Bioanalyzer\2012-11-26\2012-11-26\_004.xad


Created: 11/26/2012 4:02:00 PM  
 Modified: 11/26/2012 4:43:26 PM

**Electropherogram Summary Continued ...**

**... Peak table for sample 3 : WT P**

Peak	Size [bp]	Conc. [pg/µl]	Molarity [pmol/l]	Observations
27	640	45.73	108.3	
28	728	53.40	111.1	
29	780	74.74	145.2	
30	931	42.95	69.9	
31	982	63.28	97.6	
32	1,170	55.15	71.4	
33	1,467	36.94	38.2	
34	1,590	40.38	38.5	
35	1,687	75.34	67.7	
36	1,914	48.65	38.5	
37	2,141	39.36	27.8	
38	2,893	27.25	14.3	
39	3,208	27.36	12.9	
40	4,686	42.35	13.7	
41	5,786	18.60	4.9	
42	6,370	19.96	4.7	
43	7,598	16.78	3.3	
44	8,918	6.72	1.1	
45	10,380	75.00	10.9	Upper Marker
46	14,105	0.00	0.0	
47	14,718	0.00	0.0	
48	17,311	0.00	0.0	
49	22,545	0.00	0.0	

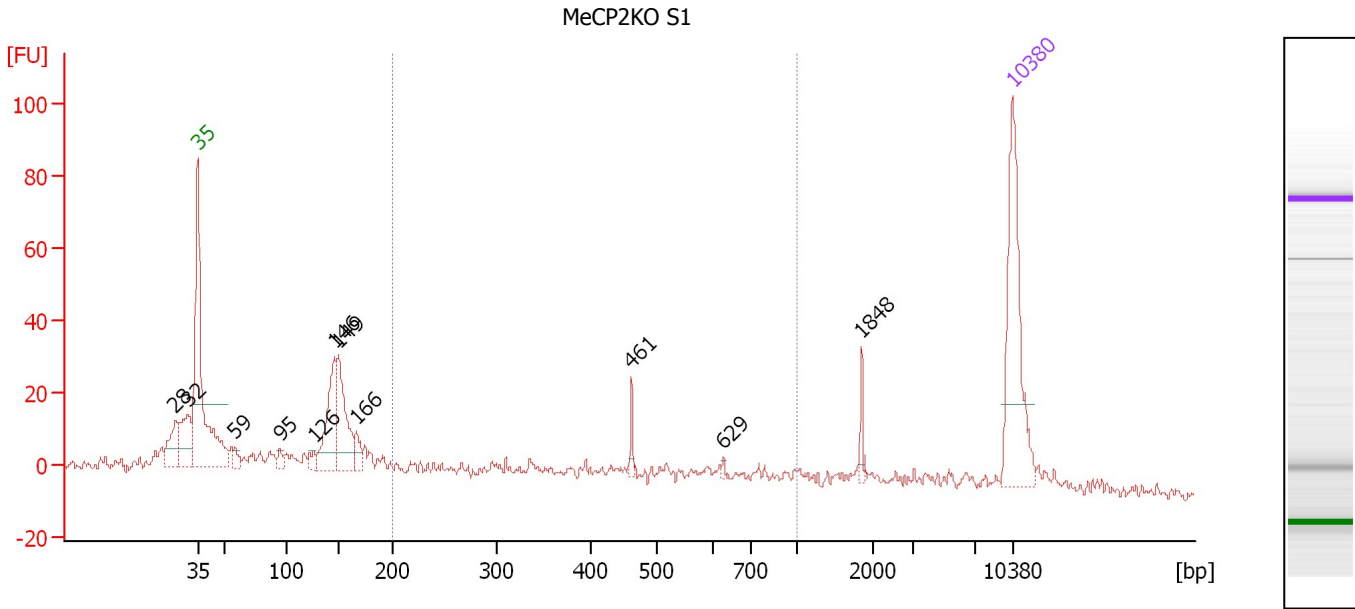
**Region table for sample 3 : WT P**

From [bp]	To [bp]	Average Size [bp]	Molarity [pmol/l]	Conc. [pg/µl]	Corr. Area	% of Total	Size distribution in CV [%]	Color
200	1,000	428	15,523.7	3,433.33	3,906.7	41	45.1	

Assay Class: High Sensitivity DNA Assay  
 Data Path: C:\...ents and Settings\Bioanalyzer\2012-11-26\2012-11-26\_004.xad

Created: 11/26/2012 4:02:00 PM  
 Modified: 11/26/2012 4:43:26 PM

**Electropherogram Summary Continued ...**



**Overall Results for sample 4 : MeCP2KO S1**

Number of peaks found: 11                      Corr. Area 1: 95.8  
 Noise: 1.5

**Peak table for sample 4 : MeCP2KO S1**

Peak	Size [bp]	Conc. [pg/μl]	Molarity [pmol/l]	Observations
1	28	0.00	0.0	
2	32	0.00	0.0	
3	35	125.00	5,411.3	Lower Marker
4	59	8.22	212.6	
5	95	7.18	114.1	
6	126	8.42	101.1	
7	146	66.61	692.7	
8	149	65.76	667.8	
9	166	13.99	127.8	
10	461	7.65	25.1	
11	629	2.01	4.9	
12	1,848	6.47	5.3	
13	10,380	75.00	10.9	Upper Marker

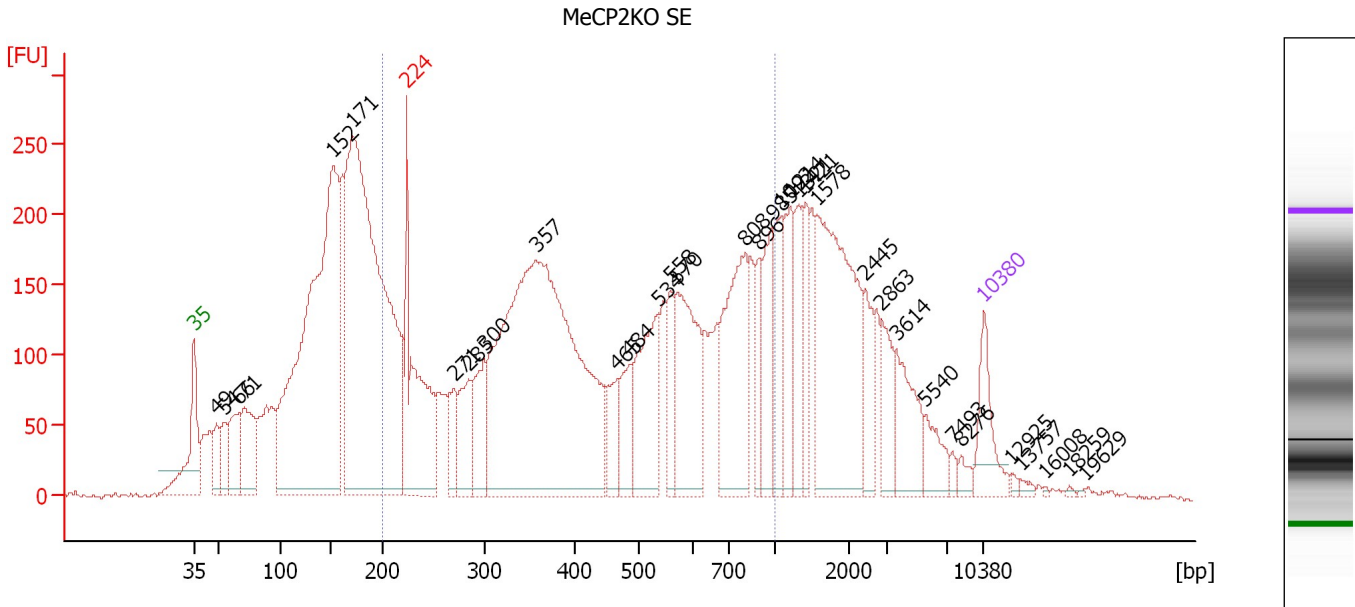
**Region table for sample 4 : MeCP2KO S1**

From [bp]	To [bp]	Average Size [bp]	Molarity [pmol/l]	Conc. [pg/μl]	Corr. Area	% of Total	Size distribution in CV [%]	Color
200	1,000	474	359.2	90.11	95.8	22	39.3	Blue

Assay Class: High Sensitivity DNA Assay  
 Data Path: C:\...ents and Settings\Bioanalyzer\2012-11-26\2012-11-26\_004.xad

Created: 11/26/2012 4:02:00 PM  
 Modified: 11/26/2012 4:43:26 PM

**Electropherogram Summary Continued ...**



**Overall Results for sample 5 : MeCP2KO SE**

Number of peaks found: 34                      Corr. Area 1: 5,515.8  
 Noise: 1.6

**Peak table for sample 5 : MeCP2KO SE**

Peak	Size [bp]	Conc. [pg/μl]	Molarity [pmol/l]	Observations
1	35	125.00	5,411.3	Lower Marker
2	49	72.45	2,260.2	
3	54	68.82	1,924.3	
4	66	137.49	3,150.2	
5	71	177.17	3,781.1	
6	152	1,352.91	13,499.3	
7	171	1,568.43	13,887.0	
8	224	381.81	2,583.0	excluded peak
9	271	76.32	427.1	
10	285	117.47	623.5	
11	300	128.80	650.0	
12	357	1,312.83	5,574.2	
13	465	81.25	264.6	
14	484	85.68	268.1	
15	534	214.15	607.5	
16	558	82.42	223.7	
17	570	244.89	650.7	
18	808	264.49	496.3	
19	896	66.43	112.3	
20	985	109.79	168.8	
21	1,092	99.65	138.2	
22	1,214	105.83	132.1	
23	1,321	88.72	101.8	
24	1,421	76.44	81.5	
25	1,578	407.04	390.8	
26	2,445	64.99	40.3	

Assay Class: High Sensitivity DNA Assay  
 Data Path: C:\...ents and Settings\Bioanalyzer\2012-11-26\2012-11-26\_004.xad

Created: 11/26/2012 4:02:00 PM  
 Modified: 11/26/2012 4:43:26 PM

**Electropherogram Summary Continued ...**

**... Peak table for sample 5 : MeCP2KO SE**

Peak	Size [bp]	Conc. [pg/μl]	Molarity [pmol/l]	Observations
27	2,863	67.00	35.5	
28	3,614	103.26	43.3	
29	5,540	48.27	13.2	
30	7,493	10.32	2.1	
31	8,276	14.36	2.6	
32	10,380	75.00	10.9	Upper Marker
33	12,925	0.00	0.0	
34	13,757	0.00	0.0	
35	16,008	0.00	0.0	
36	18,259	0.00	0.0	
37	19,629	0.00	0.0	

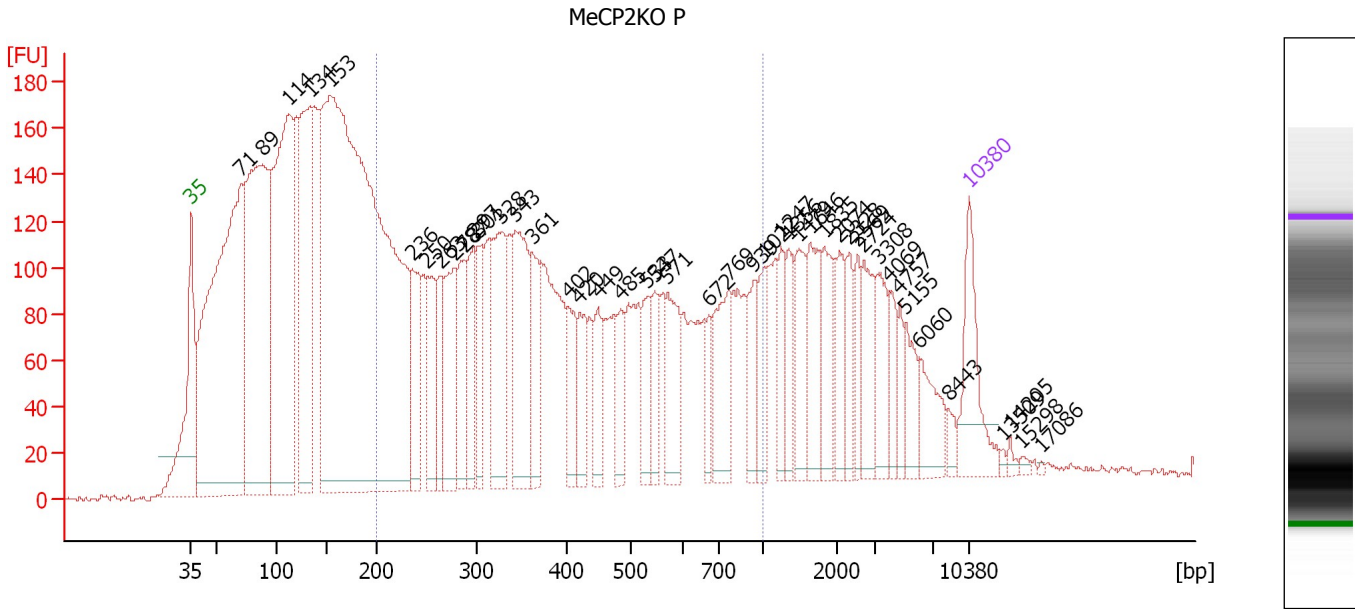
**Region table for sample 5 : MeCP2KO SE**

From [bp]	To [bp]	Average Size [bp]	Molarity [pmol/l]	Conc. [pg/μl]	Corr. Area	% of Total	Size distribution in CV [%]	Color
200	1,000	480	16,036.4	3,877.93	5,515.8	48	43.7	

Assay Class: High Sensitivity DNA Assay  
 Data Path: C:\...ents and Settings\Bioanalyzer\2012-11-26\2012-11-26\_004.xad

Created: 11/26/2012 4:02:00 PM  
 Modified: 11/26/2012 4:43:26 PM

**Electropherogram Summary Continued ...**



**Overall Results for sample 6 : MeCP2KO P**

Number of peaks found: 45                      Corr. Area 1: 4,169.9  
 Noise: 1.9

**Peak table for sample 6 : MeCP2KO P**

Peak	Size [bp]	Conc. [pg/μl]	Molarity [pmol/l]	Observations
1	35	125.00	5,411.3	Lower Marker
2	71	923.58	19,784.6	
3	89	673.10	11,498.9	
4	114	619.69	8,270.7	
5	134	372.41	4,212.3	
6	153	1,889.48	18,666.1	
7	236	107.76	692.8	
8	250	101.41	614.4	
9	263	76.35	440.1	
10	278	134.07	731.1	
11	287	98.86	522.1	
12	297	89.13	454.6	
13	301	79.34	398.8	
14	328	160.86	744.1	
15	343	174.08	769.1	
16	361	88.58	371.4	
17	402	65.08	245.1	
18	420	59.17	213.5	
19	449	55.01	185.5	
20	485	54.14	169.1	
21	533	54.59	155.2	
22	547	42.74	118.3	
23	571	84.01	223.0	
24	672	32.08	72.3	
25	769	93.18	183.6	
26	939	53.29	86.0	

Assay Class: High Sensitivity DNA Assay  
 Data Path: C:\...ents and Settings\Bioanalyzer\2012-11-26\2012-11-26\_004.xad


Created: 11/26/2012 4:02:00 PM  
 Modified: 11/26/2012 4:43:26 PM

**Electropherogram Summary Continued ...**

**... Peak table for sample 6 : MeCP2KO P**

Peak	Size [bp]	Conc. [pg/μl]	Molarity [pmol/l]	Observations
27	1,022	47.21	70.0	
28	1,247	40.96	49.8	
29	1,356	40.06	44.8	
30	1,479	57.57	59.0	
31	1,646	69.15	63.7	
32	1,835	53.55	44.2	
33	2,074	41.88	30.6	
34	2,328	34.03	22.1	
35	2,569	31.02	18.3	
36	2,724	55.21	30.7	
37	3,308	49.74	22.8	
38	4,069	28.85	10.7	
39	4,757	21.13	6.7	
40	5,155	36.62	10.8	
41	6,060	47.32	11.8	
42	8,443	10.55	1.9	
43	10,380	75.00	10.9	Upper Marker
44	13,509	0.00	0.0	
45	14,205	0.00	0.0	
46	15,298	0.00	0.0	
47	17,086	0.00	0.0	

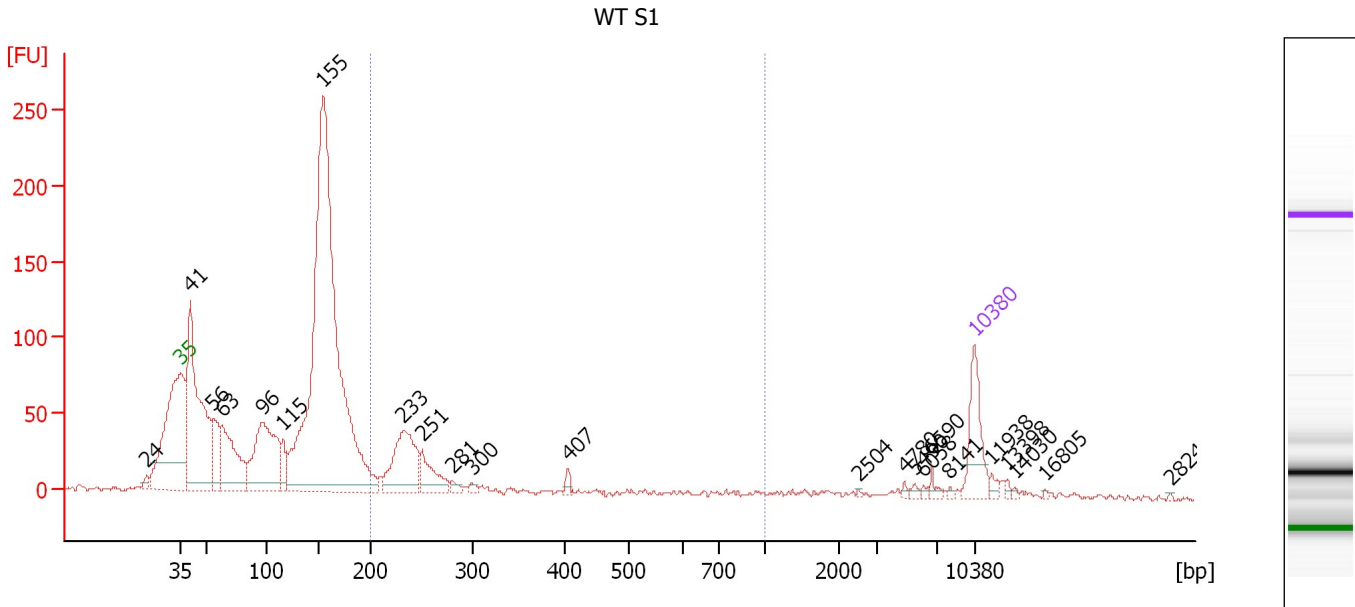
**Region table for sample 6 : MeCP2KO P**

From [bp]	To [bp]	Average Size [bp]	Molarity [pmol/l]	Conc. [pg/μl]	Corr. Area	% of Total	Size distribution in CV [%]	Color
200	1,000	434	13,424.3	3,015.91	4,169.9	41	44.6	

Assay Class: High Sensitivity DNA Assay  
 Data Path: C:\...ents and Settings\Bioanalyzer\2012-11-26\2012-11-26\_004.xad

Created: 11/26/2012 4:02:00 PM  
 Modified: 11/26/2012 4:43:26 PM

**Electropherogram Summary Continued ...**



**Overall Results for sample 7 : WT S1**

Number of peaks found: 23                      Corr. Area 1: 293.0  
 Noise: 1.3


**Peak table for sample 7 : WT S1**

Peak	Size [bp]	Conc. [pg/μl]	Molarity [pmol/l]	Observations
1	24	0.00	0.0	
2	35	125.00	5,411.3	Lower Marker
3	41	608.29	22,673.4	
4	56	116.80	3,171.0	
5	63	229.67	5,498.4	
6	96	318.82	5,039.9	
7	115	53.18	699.5	
8	155	1,651.49	16,170.1	
9	233	190.76	1,241.7	
10	251	76.00	458.6	
11	281	12.15	65.6	
12	300	8.26	41.7	
13	407	10.11	37.7	
14	2,504	1.67	1.0	
15	4,780	3.46	1.1	
16	5,490	5.20	1.4	
17	6,058	3.61	0.9	
18	6,590	8.28	1.9	
19	8,141	2.58	0.5	
20	10,380	75.00	10.9	Upper Marker
21	11,938	0.00	0.0	
22	13,398	0.00	0.0	
23	14,030	0.00	0.0	
24	16,805	0.00	0.0	
25	28,243	0.00	0.0	

Assay Class: High Sensitivity DNA Assay  
Data Path: C:\...ents and Settings\Bioanalyzer\2012-11-26\2012-11-26\_004.xad

Created: 11/26/2012 4:02:00 PM  
Modified: 11/26/2012 4:43:26 PM

**Electropherogram Summary Continued ...****... Region table for sample 7 : WT S1**

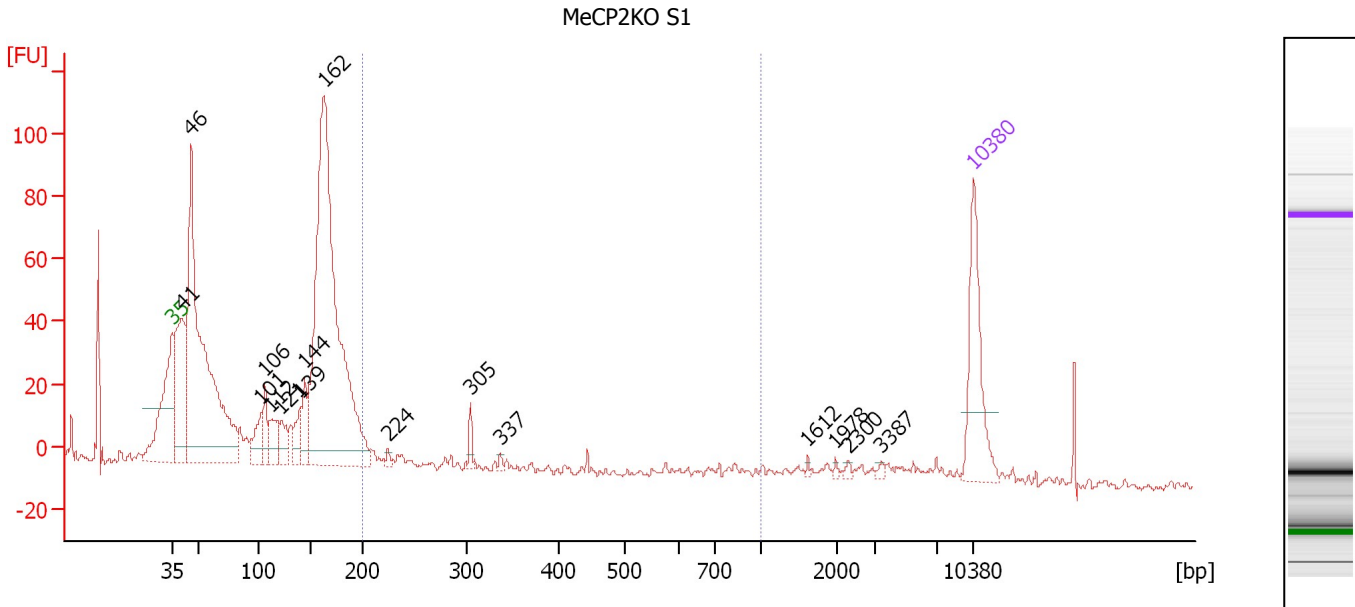
<b>From [bp]</b>	<b>To [bp]</b>	<b>Average Size [bp]</b>	<b>Molarity [pmol/l]</b>	<b>Conc. [pg/μl]</b>	<b>Corr. Area</b>	<b>% of Total</b>	<b>Size distribution in CV [%]</b>	<b>Color</b>
200	1,000	279	2,090.0	350.18	293.0	12	39.6	



Assay Class: High Sensitivity DNA Assay  
 Data Path: C:\...ents and Settings\Bioanalyzer\2012-11-26\2012-11-26\_004.xad

Created: 11/26/2012 4:02:00 PM  
 Modified: 11/26/2012 4:43:26 PM

**Electropherogram Summary Continued ...**



**Overall Results for sample 8 : MeCP2KO S1**

Number of peaks found: 16                      Corr. Area 1: 72.8  
 Noise: 1.5

**Peak table for sample 8 : MeCP2KO S1**

Peak	Size [bp]	Conc. [pg/μl]	Molarity [pmol/l]	Observations
1	35	125.00	5,411.3	Lower Marker
2	41	181.83	6,735.3	
3	46	579.46	19,009.9	
4	101	37.43	558.8	
5	106	38.10	544.3	
6	112	39.64	537.9	
7	121	30.97	388.4	
8	139	30.77	335.2	
9	144	40.06	422.4	
10	162	680.98	6,365.9	
11	224	5.15	34.8	
12	305	9.95	49.5	
13	337	3.32	14.9	
14	1,612	1.87	1.8	
15	1,978	1.99	1.5	
16	2,300	2.71	1.8	
17	3,387	2.76	1.2	
18	10,380	75.00	10.9	Upper Marker

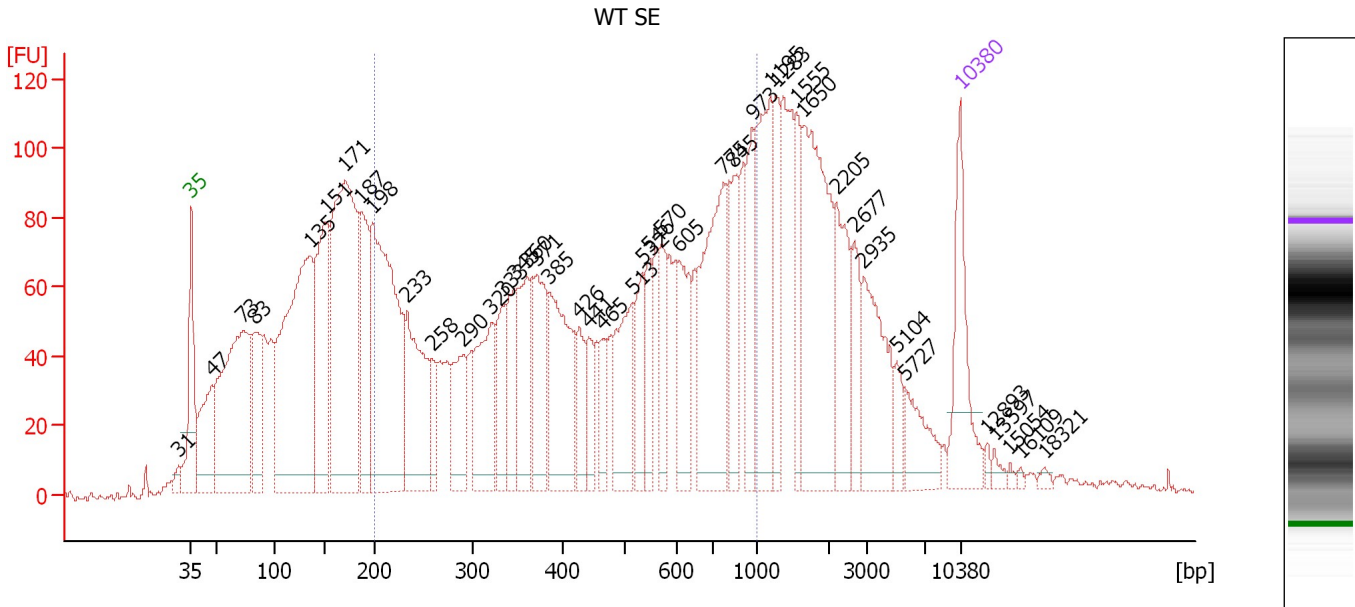
**Region table for sample 8 : MeCP2KO S1**

From [bp]	To [bp]	Average Size [bp]	Molarity [pmol/l]	Conc. [pg/μl]	Corr. Area	% of Total	Size distribution in CV [%]	Color
200	1,000	372	455.2	85.94	72.8	6	53.3	Blue

Assay Class: High Sensitivity DNA Assay  
 Data Path: C:\...ents and Settings\Bioanalyzer\2012-11-26\2012-11-26\_004.xad

Created: 11/26/2012 4:02:00 PM  
 Modified: 11/26/2012 4:43:26 PM

**Electropherogram Summary Continued ...**



**Overall Results for sample 9 : WT SE**

Number of peaks found: 43                      Corr. Area 1: 2,645.9  
 Noise: 1.0

**Peak table for sample 9 : WT SE**

Peak	Size [bp]	Conc. [pg/μl]	Molarity [pmol/l]	Observations
1	31	0.00	0.0	
2	35	125.00	5,411.3	Lower Marker
3	47	115.79	3,708.1	
4	73	362.34	7,516.5	
5	83	110.78	2,021.4	
6	135	462.92	5,182.7	
7	151	225.29	2,264.9	
8	171	452.18	4,018.1	
9	187	140.28	1,139.3	
10	198	382.04	2,926.5	
11	233	162.28	1,055.8	
12	258	38.12	223.6	
13	290	81.95	428.8	
14	320	117.81	557.5	
15	333	63.51	289.1	
16	345	74.59	327.2	
17	360	83.70	352.5	
18	371	92.58	377.9	
19	385	152.05	598.5	
20	426	44.03	156.5	
21	441	37.25	127.8	
22	465	34.44	112.2	
23	513	94.37	278.5	
24	532	54.38	154.9	
25	546	43.64	121.0	
26	570	54.65	145.3	

Assay Class: High Sensitivity DNA Assay  
 Data Path: C:\...ents and Settings\Bioanalyzer\2012-11-26\2012-11-26\_004.xad


Created: 11/26/2012 4:02:00 PM  
 Modified: 11/26/2012 4:43:26 PM

**Electropherogram Summary Continued ...**

**... Peak table for sample 9 : WT SE**

Peak	Size [bp]	Conc. [pg/μl]	Molarity [pmol/l]	Observations
27	605	73.10	183.2	
28	775	181.03	353.7	
29	845	66.51	119.3	
30	973	72.06	112.2	
31	1,195	133.17	168.9	
32	1,283	52.03	61.4	
33	1,555	46.90	45.7	
34	1,650	192.46	176.7	
35	2,205	73.10	50.2	
36	2,677	38.85	22.0	
37	2,935	90.53	46.7	
38	5,104	19.23	5.7	
39	5,727	40.51	10.7	
40	10,380	75.00	10.9	Upper Marker
41	12,893	0.00	0.0	
42	13,597	0.00	0.0	
43	15,054	0.00	0.0	
44	16,109	0.00	0.0	
45	18,321	0.00	0.0	

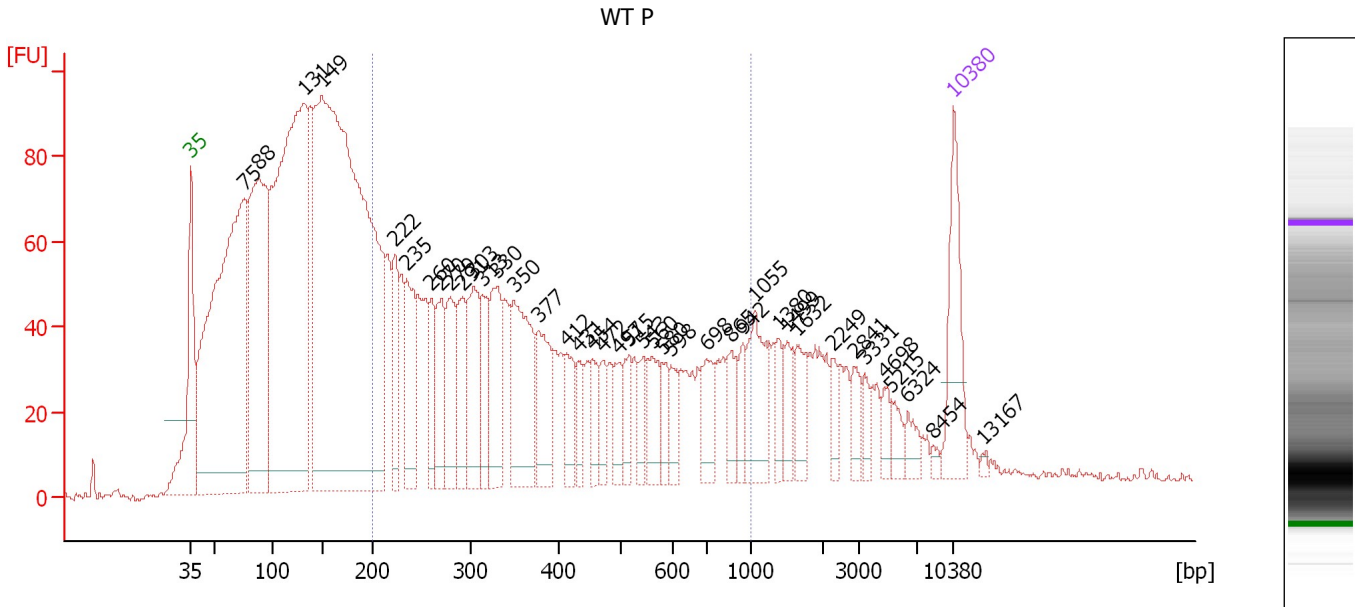
**Region table for sample 9 : WT SE**

From [bp]	To [bp]	Average Size [bp]	Molarity [pmol/l]	Conc. [pg/μl]	Corr. Area	% of Total	Size distribution in CV [%]	Color
200	1,000	492	9,769.9	2,385.07	2,645.9	46	43.8	

Assay Class: High Sensitivity DNA Assay  
 Data Path: C:\...ents and Settings\Bioanalyzer\2012-11-26\2012-11-26\_004.xad

Created: 11/26/2012 4:02:00 PM  
 Modified: 11/26/2012 4:43:26 PM

**Electropherogram Summary Continued ...**



**Overall Results for sample 10 : WT P**

Number of peaks found: 40                      Corr. Area 1: 1,779.7  
 Noise: 1.0

**Peak table for sample 10 : WT P**

Peak	Size [bp]	Conc. [pg/μl]	Molarity [pmol/l]	Observations
1	35	125.00	5,411.3	Lower Marker
2	75	867.09	17,460.6	
3	88	459.71	7,950.1	
4	131	912.30	10,553.3	
5	149	1,480.98	15,098.3	
6	222	84.06	573.2	
7	235	103.89	670.7	
8	260	58.69	342.3	
9	270	78.69	442.3	
10	279	81.97	445.4	
11	291	75.66	393.5	
12	303	106.01	529.9	
13	313	60.93	294.6	
14	330	107.24	491.9	
15	350	153.77	666.4	
16	377	86.63	348.3	
17	412	46.49	171.1	
18	431	27.14	95.3	
19	454	34.78	116.0	
20	472	30.26	97.2	
21	497	31.40	95.7	
22	515	33.61	98.8	
23	543	28.30	78.9	
24	560	42.06	113.8	
25	580	27.29	71.3	
26	598	27.26	69.1	

Assay Class: High Sensitivity DNA Assay  
 Data Path: C:\...ents and Settings\Bioanalyzer\2012-11-26\2012-11-26\_004.xad


Created: 11/26/2012 4:02:00 PM  
 Modified: 11/26/2012 4:43:26 PM

**Electropherogram Summary Continued ...**

**... Peak table for sample 10 : WT P**

Peak	Size [bp]	Conc. [pg/μl]	Molarity [pmol/l]	Observations
27	698	45.48	98.7	
28	865	35.54	62.3	
29	942	24.20	38.9	
30	1,055	73.27	105.3	
31	1,380	21.29	23.4	
32	1,499	28.93	29.3	
33	1,632	31.39	29.1	
34	2,249	18.42	12.4	
35	2,841	20.49	10.9	
36	3,331	14.20	6.5	
37	4,698	15.32	4.9	
38	5,215	15.42	4.5	
39	6,324	15.16	3.6	
40	8,454	4.97	0.9	
41	10,380	75.00	10.9	Upper Marker
42	13,167	0.00	0.0	

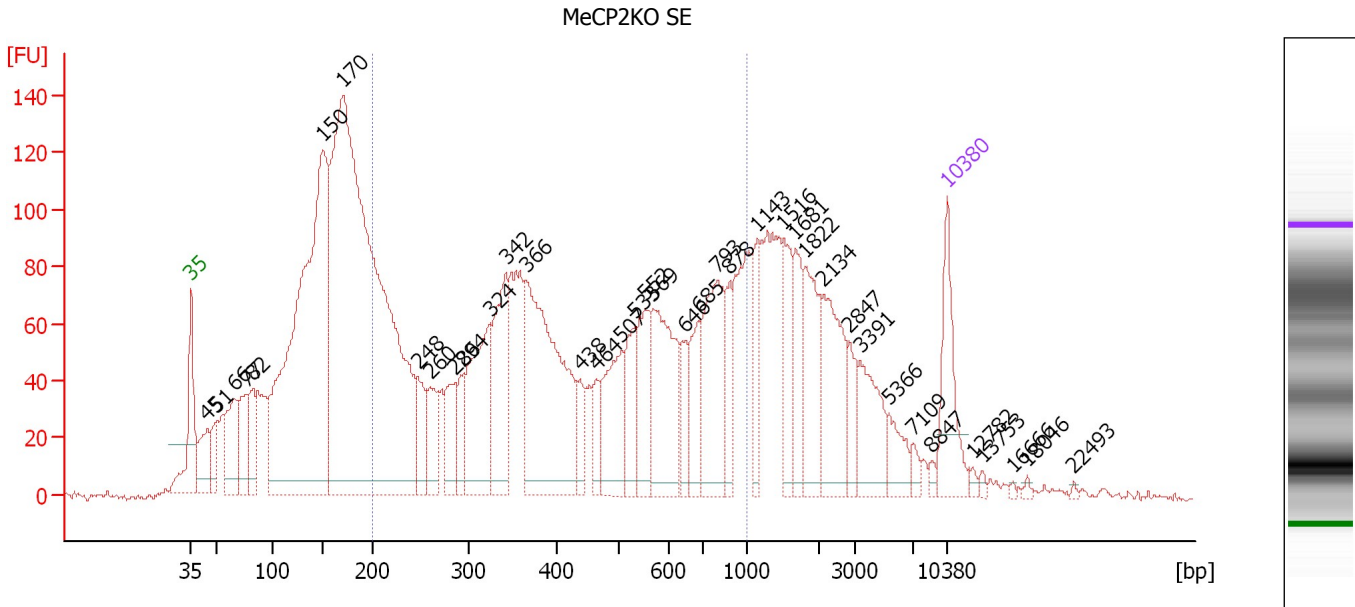
**Region table for sample 10 : WT P**

From [bp]	To [bp]	Average Size [bp]	Molarity [pmol/l]	Conc. [pg/μl]	Corr. Area	% of Total	Size distribution in CV [%]	Color
200	1,000	416	10,309.1	2,224.23	1,779.7	39	45.7	

Assay Class: High Sensitivity DNA Assay  
 Data Path: C:\...ents and Settings\Bioanalyzer\2012-11-26\2012-11-26\_004.xad

Created: 11/26/2012 4:02:00 PM  
 Modified: 11/26/2012 4:43:26 PM

**Electropherogram Summary Continued ...**



**Overall Results for sample 11 : MeCP2KO SE**

Number of peaks found: 39                      Corr. Area 1: 2,557.1  
 Noise: 1.4

**Peak table for sample 11 : MeCP2KO SE**

Peak	Size [bp]	Conc. [pg/μl]	Molarity [pmol/l]	Observations
1	35	125.00	5,411.3	Lower Marker
2	45	73.75	2,489.3	
3	51	44.69	1,324.0	
4	66	107.39	2,467.8	
5	77	88.15	1,744.6	
6	82	62.67	1,156.5	
7	150	914.82	9,223.7	
8	170	1,487.28	13,224.1	
9	248	59.29	362.9	
10	260	63.05	367.1	
11	286	70.23	372.1	
12	294	40.08	206.4	
13	324	174.82	817.3	
14	342	148.07	655.3	
15	366	355.13	1,472.0	
16	438	31.52	108.9	
17	464	33.49	109.3	
18	507	110.95	331.7	
19	533	66.85	190.0	
20	552	85.90	235.8	
21	569	153.14	408.0	
22	646	38.14	89.4	
23	685	62.90	139.2	
24	793	138.97	265.7	
25	878	40.82	70.4	
26	1,143	44.29	58.7	

Assay Class: High Sensitivity DNA Assay  
 Data Path: C:\...ents and Settings\Bioanalyzer\2012-11-26\2012-11-26\_004.xad


Created: 11/26/2012 4:02:00 PM  
 Modified: 11/26/2012 4:43:26 PM

**Electropherogram Summary Continued ...**

**... Peak table for sample 11 : MeCP2KO SE**

Peak	Size [bp]	Conc. [pg/µl]	Molarity [pmol/l]	Observations
27	1,516	63.36	63.3	
28	1,681	58.63	52.9	
29	1,822	87.47	72.7	
30	2,134	102.54	72.8	
31	2,847	30.86	16.4	
32	3,391	69.02	30.8	
33	5,366	32.28	9.1	
34	7,109	10.26	2.2	
35	8,847	5.32	0.9	
36	10,380	75.00	10.9	Upper Marker
37	12,782	0.00	0.0	
38	13,753	0.00	0.0	
39	16,666	0.00	0.0	
40	18,046	0.00	0.0	
41	22,493	0.00	0.0	

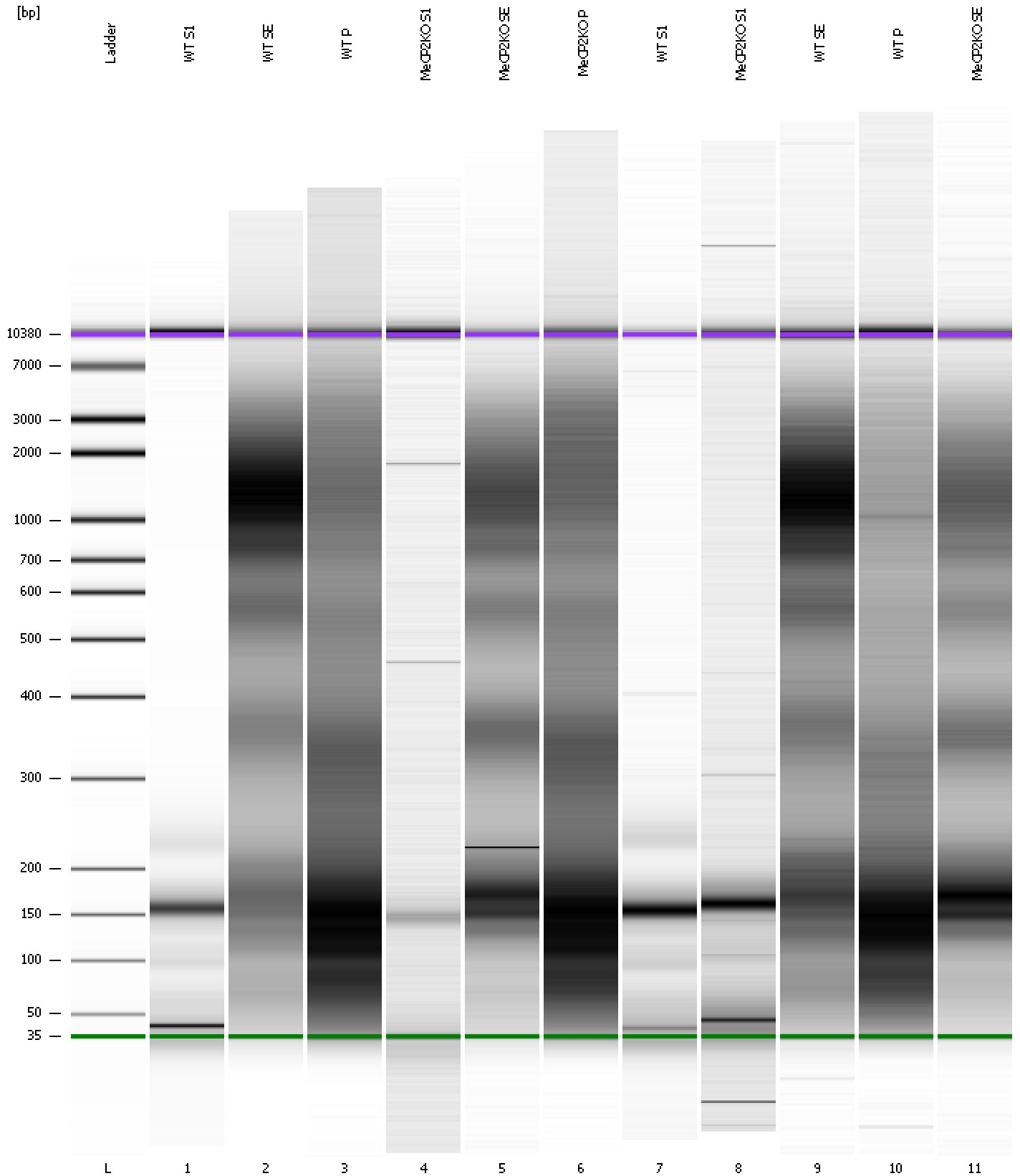
**Region table for sample 11 : MeCP2KO SE**

From [bp]	To [bp]	Average Size [bp]	Molarity [pmol/l]	Conc. [pg/µl]	Corr. Area	% of Total	Size distribution in CV [%]	Color
200	1,000	471	10,332.9	2,450.67	2,557.1	46	44.3	

Assay Class: High Sensitivity DNA Assay  
Data Path: C:\...ents and Settings\Bioanalyzer\2012-11-26\2012-11-26\_004.xad

Created: 11/26/2012 4:02:00 PM  
Modified: 11/26/2012 4:43:26 PM

**Gel Image**





Assay Class: High Sensitivity DNA Assay  
 Data Path: C:\...ents and Settings\Bioanalyzer\2012-11-26\2012-11-26\_004.xad

Created: 11/26/2012 4:02:00 PM  
 Modified: 11/26/2012 4:43:26 PM

**Run Logbook**

Description	Number	Source	Category	Sub Category	Time	Time Zone	User	Host
Run ended on port 1 (Number of wells acquired: 12)		Instrument	Run		11/26/2012 4:43:21 PM	(GMT --08:00) Pacific Standard Time	UC Davis	D8XSMGH1
Run started on port 1 (File: C:\Documents and Settings\Bioanalyzer\2012-11-26\2012-11-26_004.xad)		Instrument	Run		11/26/2012 4:02:06 PM	(GMT --08:00) Pacific Standard Time	UC Davis	D8XSMGH1
Product Number : G2938B		Instrument	Run		11/26/2012 4:02:06 PM	(GMT --08:00) Pacific Standard Time	UC Davis	D8XSMGH1
Name :		Instrument	Run		11/26/2012 4:02:06 PM	(GMT --08:00) Pacific Standard Time	UC Davis	D8XSMGH1
Vendor : Agilent Technologies		Instrument	Run		11/26/2012 4:02:06 PM	(GMT --08:00) Pacific Standard Time	UC Davis	D8XSMGH1
Serial# : DE13701086		Instrument	Run		11/26/2012 4:02:06 PM	(GMT --08:00) Pacific Standard Time	UC Davis	D8XSMGH1
Firmware : C.01.069		Instrument	Run		11/26/2012 4:02:06 PM	(GMT --08:00) Pacific Standard Time	UC Davis	D8XSMGH1
Cartridge : Electrode		Instrument	Run		11/26/2012 4:02:06 PM	(GMT --08:00) Pacific Standard Time	UC Davis	D8XSMGH1