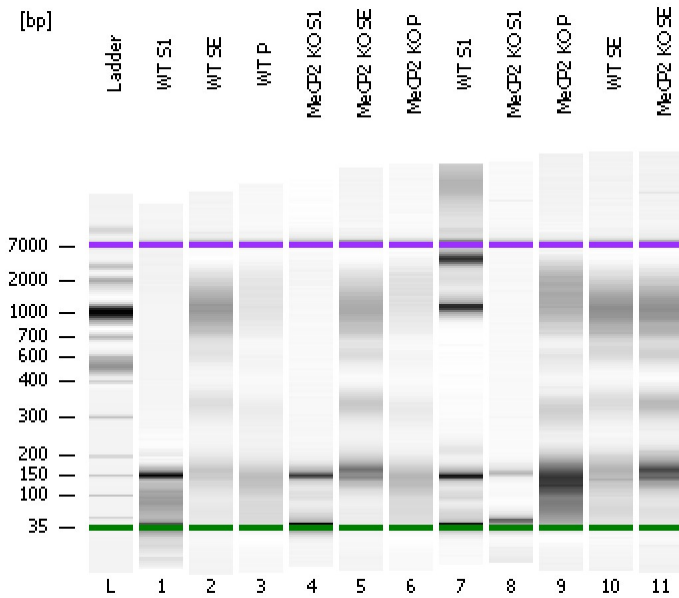


Assay Class: High Sensitivity DNA Assay
Data Path: C:\...ents and Settings\Bioanalyzer\2012-11-27\2012-11-27_001.xad

Created: 11/27/2012 1:18:18 PM
Modified: 11/27/2012 2:12:51 PM

Electrophoresis File Run Summary



Instrument Information:

Instrument Name: DE13701086 Firmware: C.01.069
Serial#: DE13701086 Type: G2938B

Assay Information:

Assay Origin Path: C:\Program Files\Agilent\2100 bioanalyzer\2100 expert\assays\dsDNA\High Sensitivity DNA.xsy
Assay Class: High Sensitivity DNA Assay
Version: 1.03
Assay Comments: Copyright © 2003-2010 Agilent Technologies

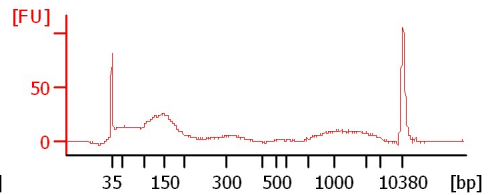
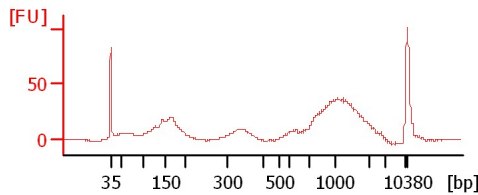
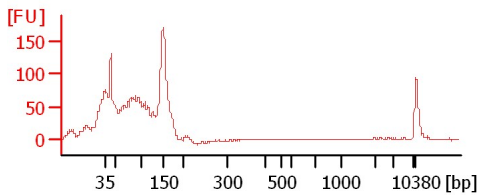
Chip Information:

Chip Lot #: Reagent Kit Lot #: Chip Comments:

WT S1

WT SE

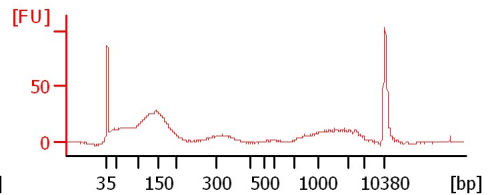
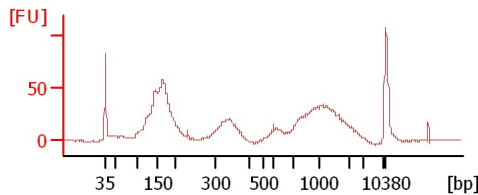
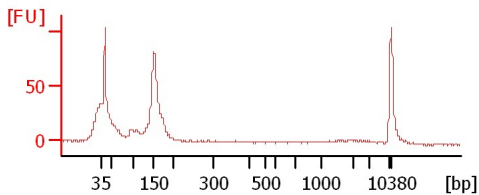
WT P



MeCP2 KO S1

MeCP2 KO SE

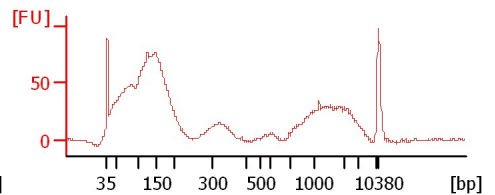
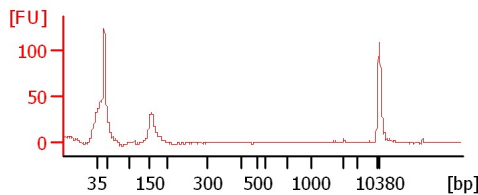
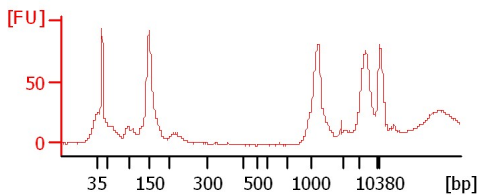
MeCP2 KO P



WT S1

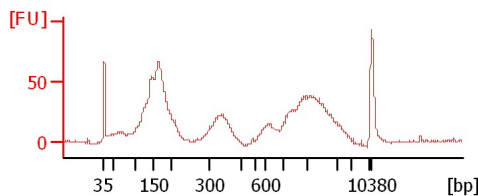
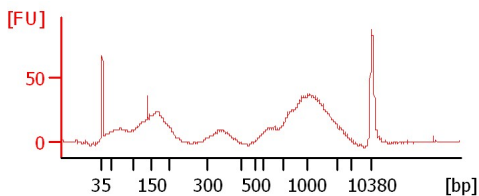
MeCP2 KO S1

MeCP2 KO P



WT SE

MeCP2 KO SE



Assay Class: High Sensitivity DNA Assay
 Data Path: C:\...ents and Settings\Bioanalyzer\2012-11-27\2012-11-27_001.xad

Created: 11/27/2012 1:18:18 PM
 Modified: 11/27/2012 2:12:51 PM

Electrophoresis File Run Summary (Chip Summary)

Sample Name	Sample Comment	Rest. Digest	Status	Observation	Result Label	Result Color
WT S1		<input type="checkbox"/>	✓			
WT SE		<input type="checkbox"/>	✓			
WT P		<input type="checkbox"/>	✓			
MeCP2 KO S1		<input type="checkbox"/>	✓			
MeCP2 KO SE		<input type="checkbox"/>	✓			
MeCP2 KO P		<input type="checkbox"/>	✓			
WT S1		<input type="checkbox"/>	✓			
MeCP2 KO S1		<input type="checkbox"/>	✓			
MeCP2 KO P		<input type="checkbox"/>	✓			
WT SE		<input type="checkbox"/>	✓			
MeCP2 KO SE		<input type="checkbox"/>	✓			
Ladder		<input type="checkbox"/>	✓			

Chip Lot #

Reagent Kit Lot #

Chip Comments :

Assay Class: High Sensitivity DNA Assay
Data Path: C:\...ents and Settings\Bioanalyzer\2012-11-27\2012-11-27_001.xad

Created: 11/27/2012 1:18:18 PM
Modified: 11/27/2012 2:12:51 PM

Electrophoresis Assay Details

General Analysis Settings

Number of Available Sample and Ladder Wells (Max.) : 12
Minimum Visible Range [s] : 32
Maximum Visible Range [s] : 138
Start Analysis Time Range [s] : 33
End Analysis Time Range [s] : 137.5
Ladder Concentration [pg/μl] : 1950
Uses Standard Area for Ladder Fragments
Lower Marker Concentration [pg/μl] : 125
Upper Marker Concentration [pg/μl] : 75
Used Upper Marker for Quantitation
Standard Curve Fit is Point to Point
Show Data Aligned to Lower and Upper Marker

Integrator Settings

Integration Start Time [s] : 33.05
Integration End Time [s] : 137
Slope Threshold : 0.8
Height Threshold [FU] : 5
Area Threshold : 0.1
Width Threshold [s] : 0.6
Baseline Plateau [s] : 0.5

Filter Settings

Filter Width [s] : 0.5
Polynomial Order : 4

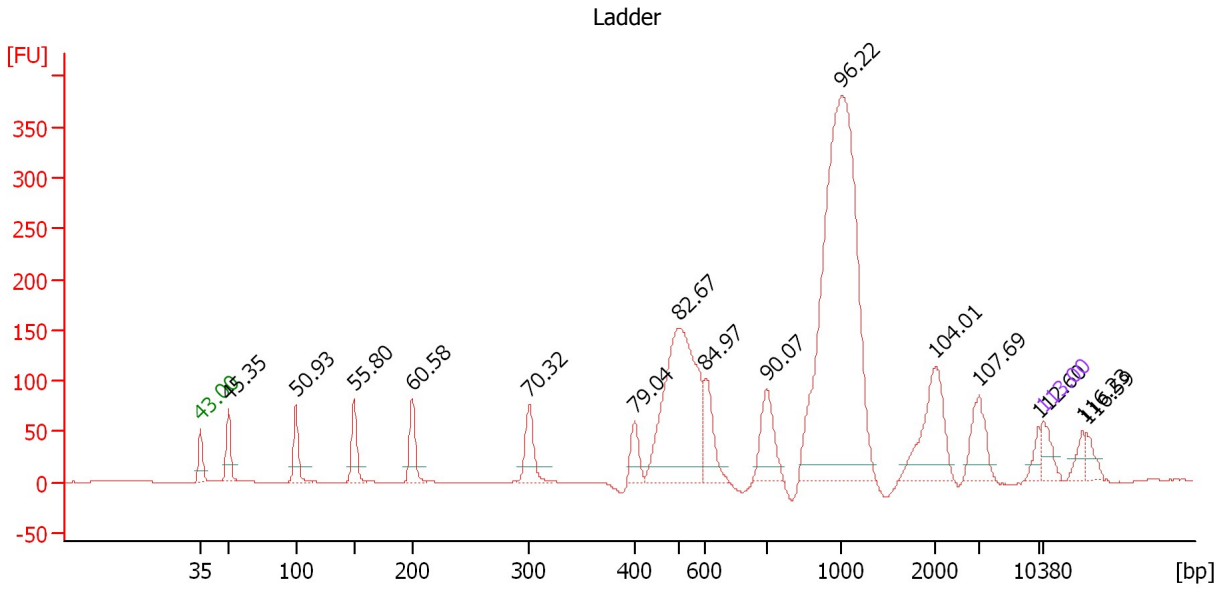
Ladder

Ladder Peak	Size	Area
1	35	160
2	50	210
3	100	208
4	150	221
5	200	242
6	300	270
7	400	305
8	500	306
9	600	336
10	700	321
11	1000	366
12	2000	413
13	3000	411
14	7000	400
15	10380	214

Assay Class: High Sensitivity DNA Assay
 Data Path: C:\...ents and Settings\Bioanalyzer\2012-11-27\2012-11-27_001.xad

Created: 11/27/2012 1:18:18 PM
 Modified: 11/27/2012 2:12:51 PM

Electropherogram Summary



Overall Results for Ladder

Noise: 0.1

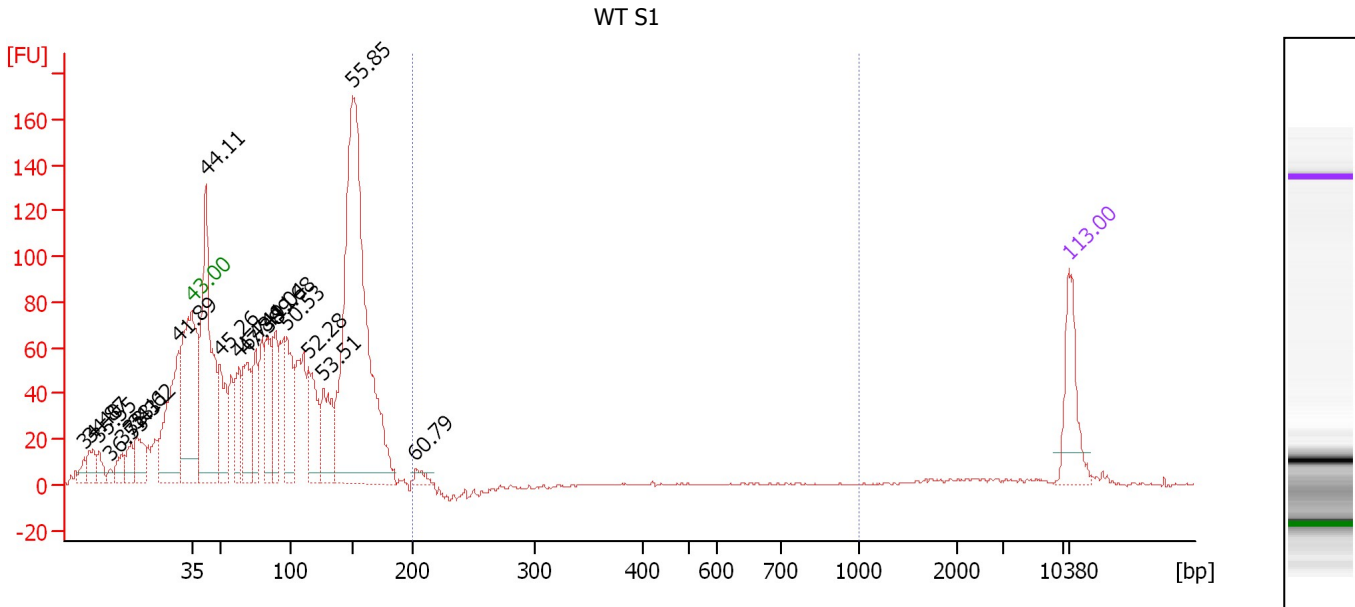
Peak table for Ladder

Peak	Size [bp]	Conc. [pg/μl]	Molarity [pmol/l]	Observations
1	35	125.00	5,411.3	Lower Marker
2	50	150.00	4,545.5	Ladder Peak
3	100	150.00	2,272.7	Ladder Peak
4	150	150.00	1,515.2	Ladder Peak
5	200	150.00	1,136.4	Ladder Peak
6	300	150.00	757.6	Ladder Peak
7	400	150.00	568.2	Ladder Peak
8	500	150.00	454.5	Ladder Peak
9	600	150.00	378.8	Ladder Peak
10	700	150.00	324.7	Ladder Peak
11	1,000	150.00	227.3	Ladder Peak
12	2,000	150.00	113.6	Ladder Peak
13	3,000	150.00	75.8	Ladder Peak
14	7,000	150.00	32.5	Ladder Peak
15	10,380	75.00	10.9	Upper Marker
16	37,796	0.00	0.0	
17	40,801	0.00	0.0	

Assay Class: High Sensitivity DNA Assay
 Data Path: C:\...ents and Settings\Bioanalyzer\2012-11-27\2012-11-27_001.xad

Created: 11/27/2012 1:18:18 PM
 Modified: 11/27/2012 2:12:51 PM

Electropherogram Summary Continued ...



Overall Results for sample 1 : WT S1

Number of peaks found: 20 Corr. Area 1: 4.4
 Noise: 0.5

Peak table for sample 1 : WT S1

Peak	Size [bp]	Conc. [pg/μl]	Molarity [pmol/l]	Observations
1	5	0.00	0.0	
2	7	0.00	0.0	
3	9	0.00	0.0	
4	12	0.00	0.0	
5	15	0.00	0.0	
6	18	0.00	0.0	
7	20	0.00	0.0	
8	31	0.00	0.0	
9	35	125.00	5,411.3	Lower Marker
10	42	509.44	18,346.6	
11	49	152.28	4,669.0	
12	63	106.10	2,571.0	
13	68	162.22	3,601.2	
14	75	114.81	2,327.6	
15	83	140.00	2,551.9	
16	89	130.49	2,225.4	
17	96	191.16	3,002.1	
18	114	154.09	2,050.3	
19	127	131.49	1,574.5	
20	151	1,055.93	10,624.9	
21	202	16.72	125.3	
22	10,380	75.00	10.9	Upper Marker

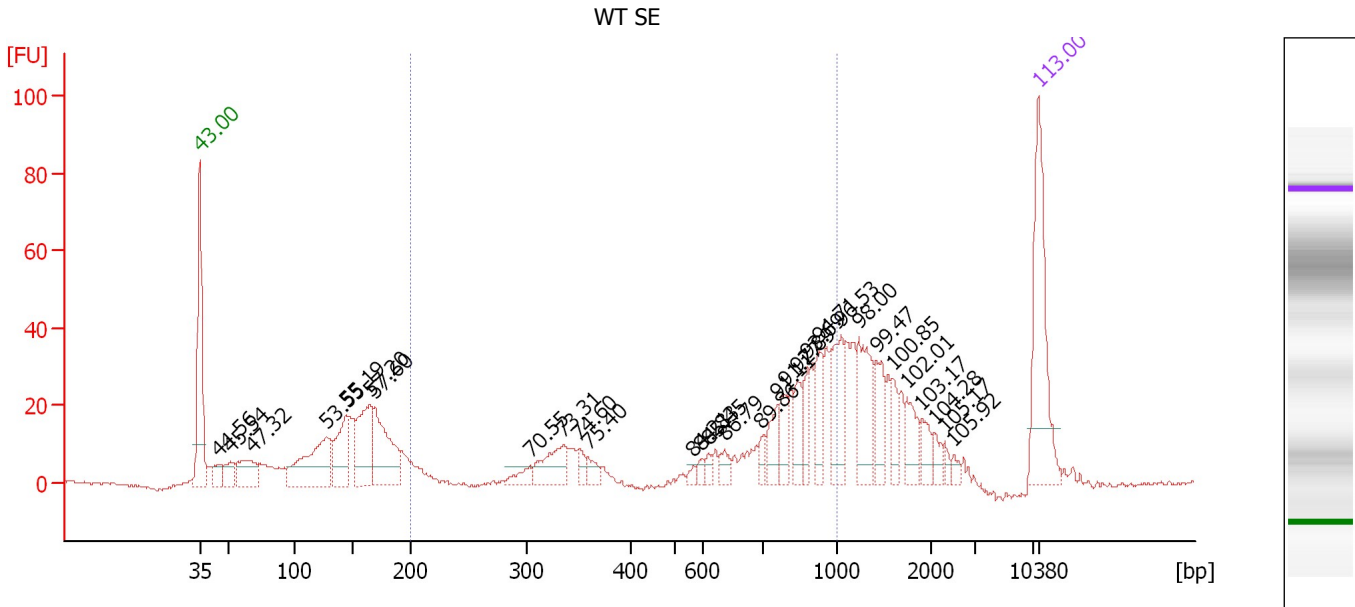
Region table for sample 1 : WT S1

From [bp]	To [bp]	Average Size [bp]	Molarity [pmol/l]	Conc. [pg/μl]	Corr. Area	% of Total	Size distribution in CV [%]	Color
200	1,000	206	46.1	6.27	4.4	0	1.4	Blue

Assay Class: High Sensitivity DNA Assay
 Data Path: C:\...ents and Settings\Bioanalyzer\2012-11-27\2012-11-27_001.xad

Created: 11/27/2012 1:18:18 PM
 Modified: 11/27/2012 2:12:51 PM

Electropherogram Summary Continued ...



Overall Results for sample 2 : WT SE

Number of peaks found: 30 Corr. Area 1: 309.7
 Noise: 0.4

Peak table for sample 2 : WT SE

Peak	Size [bp]	Conc. [pg/μl]	Molarity [pmol/l]	Observations
1	35	125.00	5,411.3	Lower Marker
2	45	17.03	574.0	
3	52	19.54	572.8	
4	68	41.43	927.8	
5	127	93.02	1,110.6	
6	144	57.41	604.9	
7	165	70.94	652.8	
8	169	80.17	719.5	
9	303	12.44	62.3	
10	334	37.36	169.4	
11	349	8.93	38.8	
12	358	11.14	47.1	
13	567	4.01	10.7	
14	594	5.05	12.9	
15	609	5.48	13.6	
16	636	9.27	22.1	
17	696	7.88	17.2	
18	751	19.36	39.1	
19	783	19.44	37.6	
20	837	20.41	36.9	
21	877	16.75	28.9	
22	926	23.15	37.9	
23	1,040	42.09	61.3	
24	1,229	45.19	55.7	
25	1,417	22.06	23.6	
26	1,594	14.17	13.5	

Assay Class: High Sensitivity DNA Assay
 Data Path: C:\...ents and Settings\Bioanalyzer\2012-11-27\2012-11-27_001.xad


Created: 11/27/2012 1:18:18 PM
 Modified: 11/27/2012 2:12:51 PM

Electropherogram Summary Continued ...

... Peak table for sample 2 : WT SE

Peak	Size [bp]	Conc. [pg/μl]	Molarity [pmol/l]	Observations
27	1,743	18.89	16.4	
28	1,891	12.26	9.8	
29	2,072	7.15	5.2	
30	2,315	3.72	2.4	
31	2,520	3.82	2.3	
32	10,380	75.00	10.9	Upper Marker

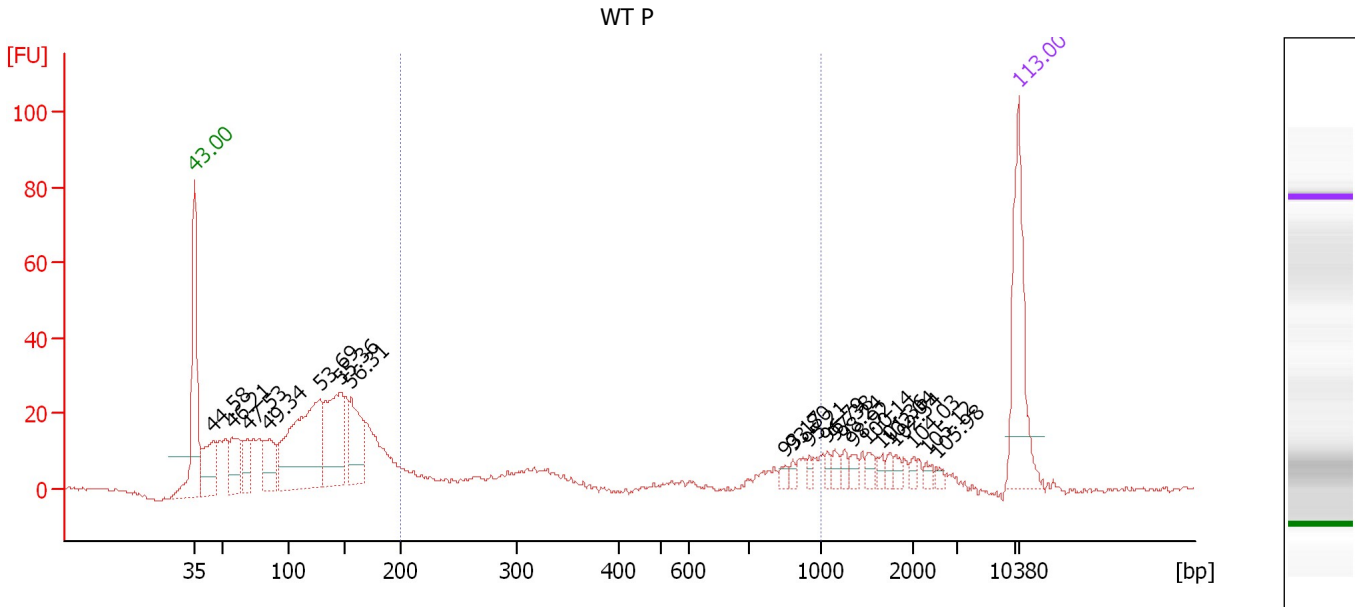
Region table for sample 2 : WT SE

From [bp]	To [bp]	Average Size [bp]	Molarity [pmol/l]	Conc. [pg/μl]	Corr. Area	% of Total	Size distribution in CV [%]	Color
200	1,000	715	853.4	306.09	309.7	36	32.4	

Assay Class: High Sensitivity DNA Assay
 Data Path: C:\...ents and Settings\Bioanalyzer\2012-11-27\2012-11-27_001.xad

Created: 11/27/2012 1:18:18 PM
 Modified: 11/27/2012 2:12:51 PM

Electropherogram Summary Continued ...



Assay Class: High Sensitivity DNA Assay
Data Path: C:\...ents and Settings\Bioanalyzer\2012-11-27\2012-11-27_001.xad

Created: 11/27/2012 1:18:18 PM
Modified: 11/27/2012 2:12:51 PM

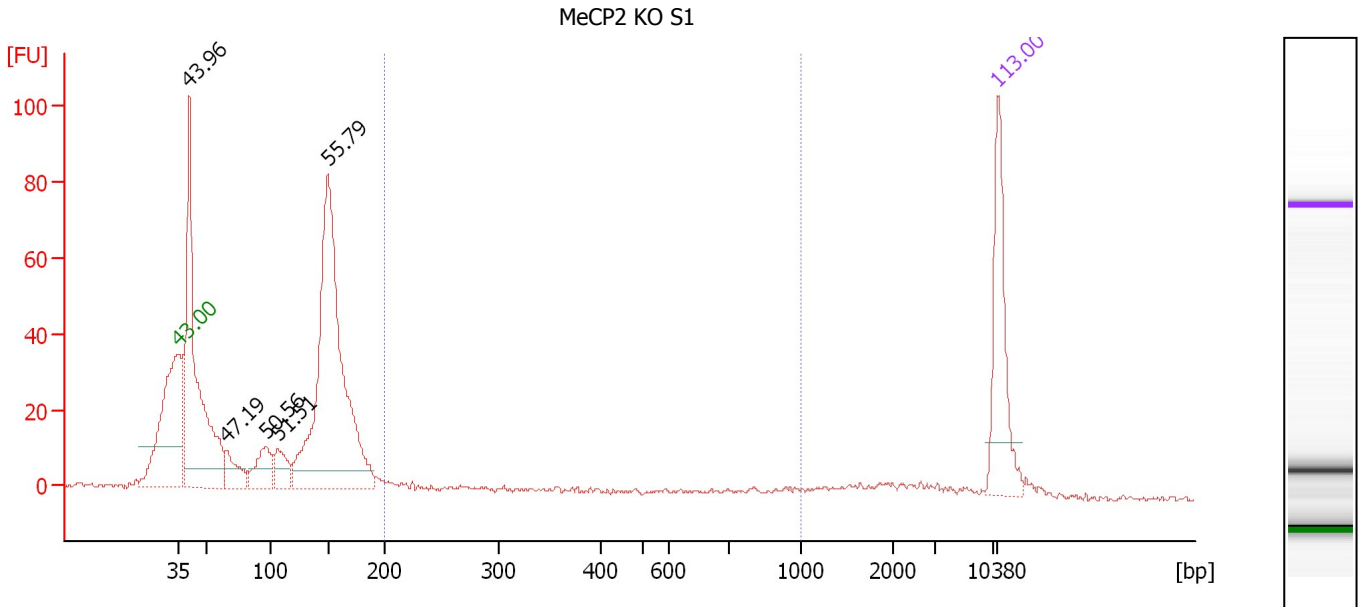
Electropherogram Summary Continued ...**... Region table for sample 3 : WT P**

From [bp]	To [bp]	Average Size [bp]	Molarity [pmol/l]	Conc. [pg/μl]	Corr. Area	% of Total	Size distribution in CV [%]	Co lor
200	1,000	533	564.5	128.43	114.9	16	54.9	

Assay Class: High Sensitivity DNA Assay
 Data Path: C:\...ents and Settings\Bioanalyzer\2012-11-27\2012-11-27_001.xad

Created: 11/27/2012 1:18:18 PM
 Modified: 11/27/2012 2:12:51 PM

Electropherogram Summary Continued ...



Overall Results for sample 4 : MeCP2 KO S1

Number of peaks found: 5 Corr. Area 1: 26.0
 Noise: 0.6

Peak table for sample 4 : MeCP2 KO S1

Peak	Size [bp]	Conc. [pg/μl]	Molarity [pmol/l]	Observations
1	35	125.00	5,411.3	Lower Marker
2	41	390.64	14,397.6	
3	66	40.25	917.1	
4	97	47.97	751.7	
5	106	37.67	538.3	
6	150	501.21	5,064.9	
7	10,380	75.00	10.9	Upper Marker

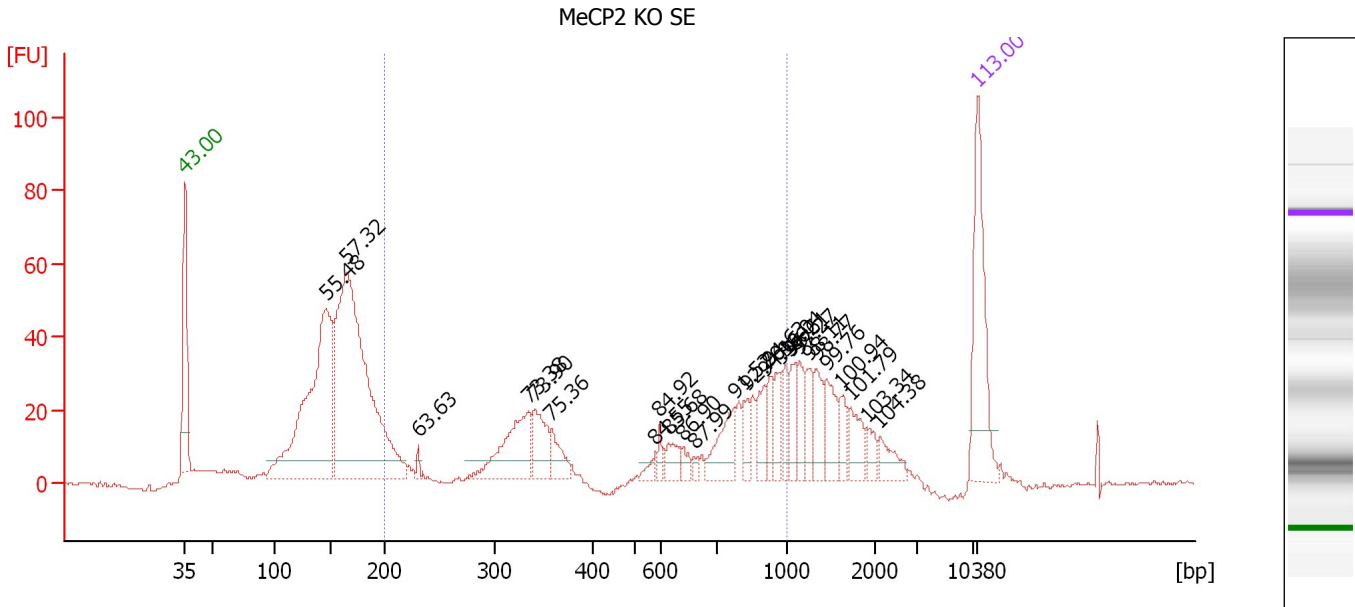
Region table for sample 4 : MeCP2 KO S1

From [bp]	To [bp]	Average Size [bp]	Molarity [pmol/l]	Conc. [pg/μl]	Corr. Area	% of Total	Size distribution in CV [%]	Color
200	1,000	521	120.2	26.92	26.0	3	52.3	Blue

Assay Class: High Sensitivity DNA Assay
 Data Path: C:\...ents and Settings\Bioanalyzer\2012-11-27\2012-11-27_001.xad

Created: 11/27/2012 1:18:18 PM
 Modified: 11/27/2012 2:12:51 PM

Electropherogram Summary Continued ...



Overall Results for sample 5 : MeCP2 KO SE

Number of peaks found: 26 Corr. Area 1: 423.2
 Noise: 0.4

Peak table for sample 5 : MeCP2 KO SE

Peak	Size [bp]	Conc. [pg/μl]	Molarity [pmol/l]	Observations
1	35	125.00	5,411.3	Lower Marker
2	147	308.35	3,182.8	
3	166	442.36	4,039.0	
4	231	4.99	32.7	
5	335	78.29	353.9	
6	341	40.16	178.4	
7	358	21.82	92.4	
8	582	6.26	16.3	
9	598	7.71	19.5	
10	614	15.05	37.2	
11	638	7.33	17.4	
12	659	4.23	9.7	
13	771	36.02	70.8	
14	828	15.46	28.3	
15	899	19.89	33.5	
16	922	16.03	26.3	
17	971	20.07	31.3	
18	991	16.78	25.6	
19	1,050	19.75	28.5	
20	1,134	19.24	25.7	
21	1,243	17.13	20.9	
22	1,328	22.87	26.1	
23	1,455	26.41	27.5	
24	1,606	13.22	12.5	
25	1,715	19.75	17.5	
26	1,914	8.87	7.0	

Assay Class: High Sensitivity DNA Assay
Data Path: C:\...ents and Settings\Bioanalyzer\2012-11-27\2012-11-27_001.xad

Created: 11/27/2012 1:18:18 PM
Modified: 11/27/2012 2:12:51 PM

Electropherogram Summary Continued ...**... Peak table for sample 5 : MeCP2 KO SE**

Peak	Size [bp]	Conc. [pg/ μ l]	Molarity [pmol/l]	Observations
27	2,100	15.15	10.9	
28	▶ 10,380	75.00	10.9	Upper Marker

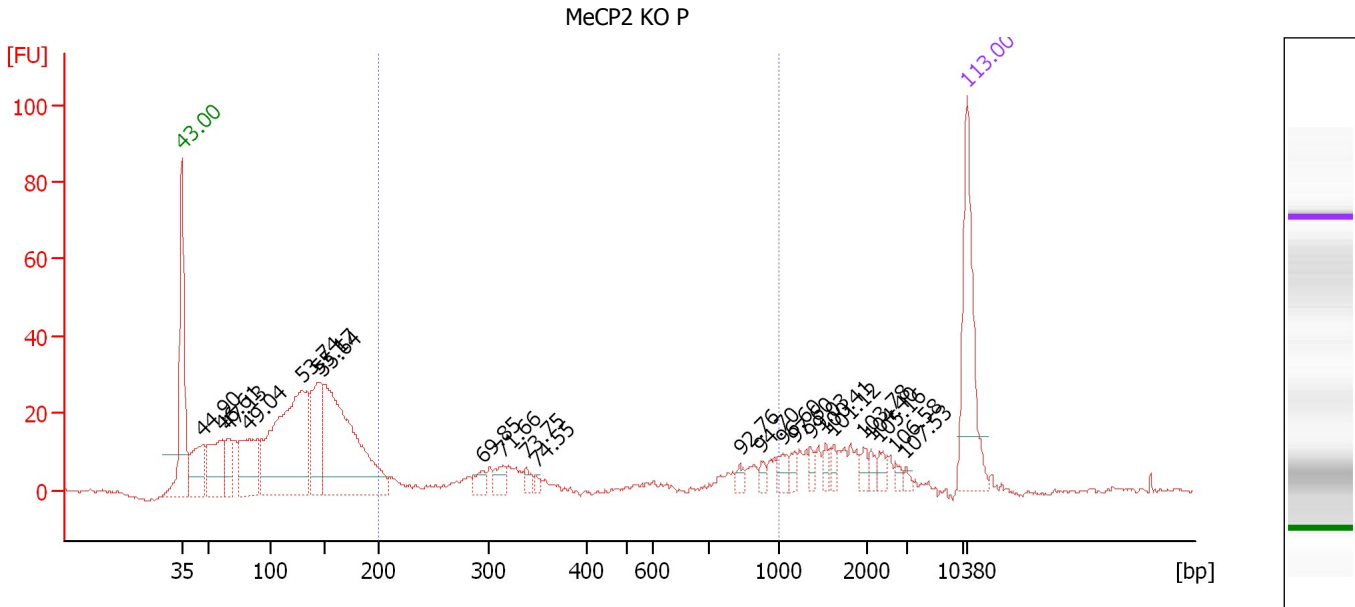
Region table for sample 5 : MeCP2 KO SE

From [bp]	To [bp]	Average Size [bp]	Molarity [pmol/l]	Conc. [pg/ μ l]	Corr. Area	% of Total	Size distribution in CV [%]	Color
200	1,000	601	1,562.2	429.63	423.2	34	43.9	■

Assay Class: High Sensitivity DNA Assay
 Data Path: C:\...ents and Settings\Bioanalyzer\2012-11-27\2012-11-27_001.xad

Created: 11/27/2012 1:18:18 PM
 Modified: 11/27/2012 2:12:51 PM

Electropherogram Summary Continued ...



Overall Results for sample 6 : MeCP2 KO P

Number of peaks found: 23 Corr. Area 1: 121.9
 Noise: 0.5

Peak table for sample 6 : MeCP2 KO P


Peak	Size [bp]	Conc. [pg/μl]	Molarity [pmol/l]	Observations
1	35	125.00	5,411.3	Lower Marker
2	47	71.68	2,303.5	
3	61	85.13	2,103.0	
4	66	32.38	743.0	
5	83	90.27	1,646.6	
6	129	276.53	3,250.6	
7	144	89.93	949.3	
8	148	268.08	2,736.9	
9	295	12.77	65.6	
10	315	13.25	63.7	
11	339	7.89	35.2	
12	349	4.65	20.2	
13	831	6.06	11.0	
14	926	5.27	8.6	
15	1,049	9.10	13.1	
16	1,178	7.57	9.7	
17	1,360	6.03	6.7	
18	1,537	6.12	6.0	
19	1,629	6.50	6.0	
20	1,970	6.37	4.9	
21	2,105	5.58	4.0	
22	2,312	6.53	4.3	
23	2,700	4.02	2.3	
24	2,959	2.93	1.5	
25	10,380	75.00	10.9	Upper Marker

Assay Class: High Sensitivity DNA Assay
Data Path: C:\...ents and Settings\Bioanalyzer\2012-11-27\2012-11-27_001.xad

Created: 11/27/2012 1:18:18 PM
Modified: 11/27/2012 2:12:51 PM

Electropherogram Summary Continued ...

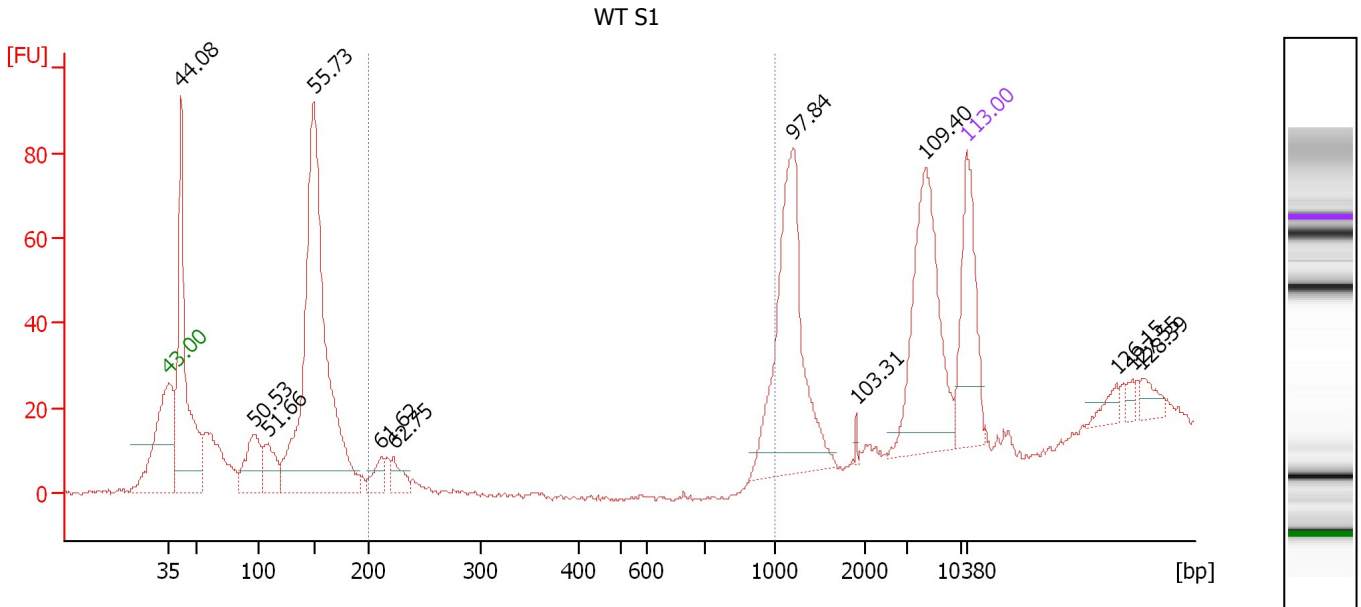
... Region table for sample 6 : MeCP2 KO P

From [bp]	To [bp]	Average Size [bp]	Molarity [pmol/l]	Conc. [pg/ μ l]	Corr. Area	% of Total	Size distribution in CV [%]	Color
200	1,000	529	597.4	141.65	121.9	15	52.9	

Assay Class: High Sensitivity DNA Assay
 Data Path: C:\...ents and Settings\Bioanalyzer\2012-11-27\2012-11-27_001.xad

Created: 11/27/2012 1:18:18 PM
 Modified: 11/27/2012 2:12:51 PM

Electropherogram Summary Continued ...



Overall Results for sample 7 : WT S1

Number of peaks found: 12 Corr. Area 1: 24.1
 Noise: 0.5

Peak table for sample 7 : WT S1

Peak	Size [bp]	Conc. [pg/μl]	Molarity [pmol/l]	Observations
1	35	125.00	5,411.3	Lower Marker
2	42	322.32	11,661.4	
3	96	74.39	1,168.2	
4	108	50.09	706.0	
5	149	597.23	6,061.0	
6	211	23.50	169.0	
7	222	21.79	148.5	
8	1,208	200.66	251.7	
9	1,910	2.48	2.0	
10	4,392	144.37	49.8	
11	10,380	75.00	10.9	Upper Marker
12	121,909	0.00	0.0	
13	133,816	0.00	0.0	
14	140,960	0.00	0.0	

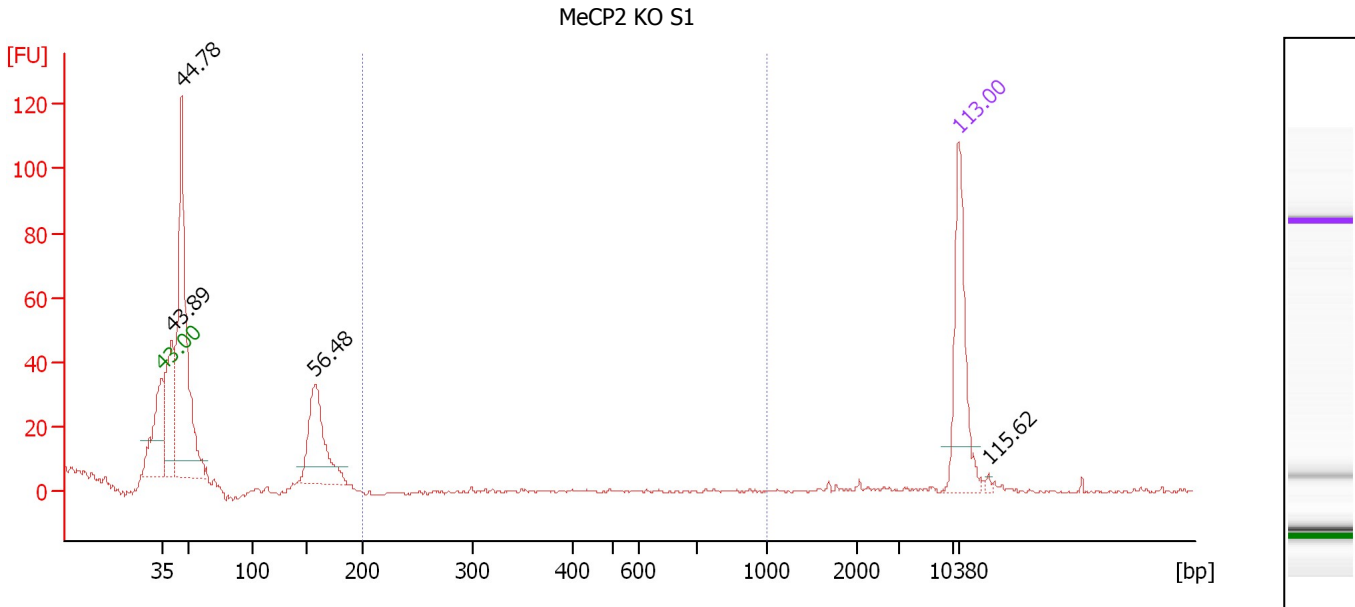
Region table for sample 7 : WT S1

From [bp]	To [bp]	Average Size [bp]	Molarity [pmol/l]	Conc. [pg/μl]	Corr. Area	% of Total	Size distribution in CV [%]	Color
200	1,000	785	107.5	26.99	24.1	2	41.9	Blue

Assay Class: High Sensitivity DNA Assay
 Data Path: C:\...ents and Settings\Bioanalyzer\2012-11-27\2012-11-27_001.xad

Created: 11/27/2012 1:18:18 PM
 Modified: 11/27/2012 2:12:51 PM

Electropherogram Summary Continued ...



Overall Results for sample 8 : MeCP2 KO S1

Number of peaks found: 4 Corr. Area 1: 0.0
 Noise: 0.5

Peak table for sample 8 : MeCP2 KO S1

Peak	Size [bp]	Conc. [pg/μl]	Molarity [pmol/l]	Observations
1	35	125.00	5,411.3	Lower Marker
2	41	147.07	5,476.8	
3	46	358.12	11,700.7	
4	157	131.89	1,271.1	
5	10,380	75.00	10.9	Upper Marker
6	32,621	0.00	0.0	

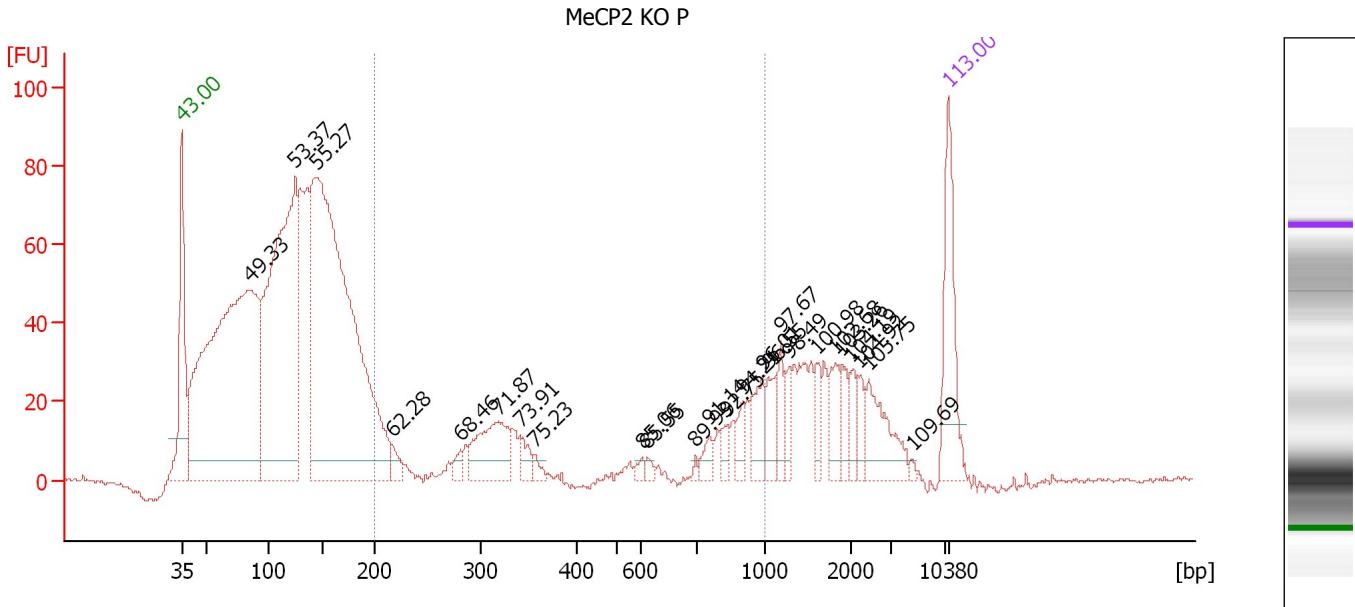
Region table for sample 8 : MeCP2 KO S1

From [bp]	To [bp]	Average Size [bp]	Molarity [pmol/l]	Conc. [pg/μl]	Corr. Area	% of Total	Size distribution in CV [%]	Color
200	1,000	0	0.0	0.00	0.0	0	0.0	Blue

Assay Class: High Sensitivity DNA Assay
 Data Path: C:\...ents and Settings\Bioanalyzer\2012-11-27\2012-11-27_001.xad

Created: 11/27/2012 1:18:18 PM
 Modified: 11/27/2012 2:12:51 PM

Electropherogram Summary Continued ...



Overall Results for sample 9 : MeCP2 KO P

Number of peaks found: 25 Corr. Area 1: 298.5
 Noise: 0.6

Peak table for sample 9 : MeCP2 KO P

Peak	Size [bp]	Conc. [pg/μl]	Molarity [pmol/l]	Observations
1	35	125.00	5,411.3	Lower Marker
2	86	911.57	16,119.0	
3	125	668.38	8,096.2	
4	145	985.67	10,330.1	
5	217	18.65	130.0	
6	281	12.24	66.0	
7	318	86.93	414.5	
8	341	18.24	81.0	
9	356	8.33	35.4	
10	602	5.73	14.4	
11	611	5.06	12.5	
12	697	3.52	7.6	
13	753	13.76	27.7	
14	831	12.06	22.0	
15	902	15.77	26.5	
16	990	33.13	50.7	
17	1,042	26.28	38.2	
18	1,186	19.81	25.3	
19	1,292	16.92	19.8	
20	1,610	17.61	16.6	
21	1,829	27.43	22.7	
22	1,904	16.00	12.7	
23	2,048	16.31	12.1	
24	2,247	14.14	9.5	
25	2,472	48.71	29.9	
26	4,630	2.33	0.8	

Assay Class: High Sensitivity DNA Assay
Data Path: C:\...ents and Settings\Bioanalyzer\2012-11-27\2012-11-27_001.xad

Created: 11/27/2012 1:18:18 PM
Modified: 11/27/2012 2:12:51 PM

Electropherogram Summary Continued ...**... Peak table for sample 9 : MeCP2 KO P**

Peak	Size [bp]	Conc. [pg/ μ l]	Molarity [pmol/l]	Observations
27	10,380	75.00	10.9	Upper Marker

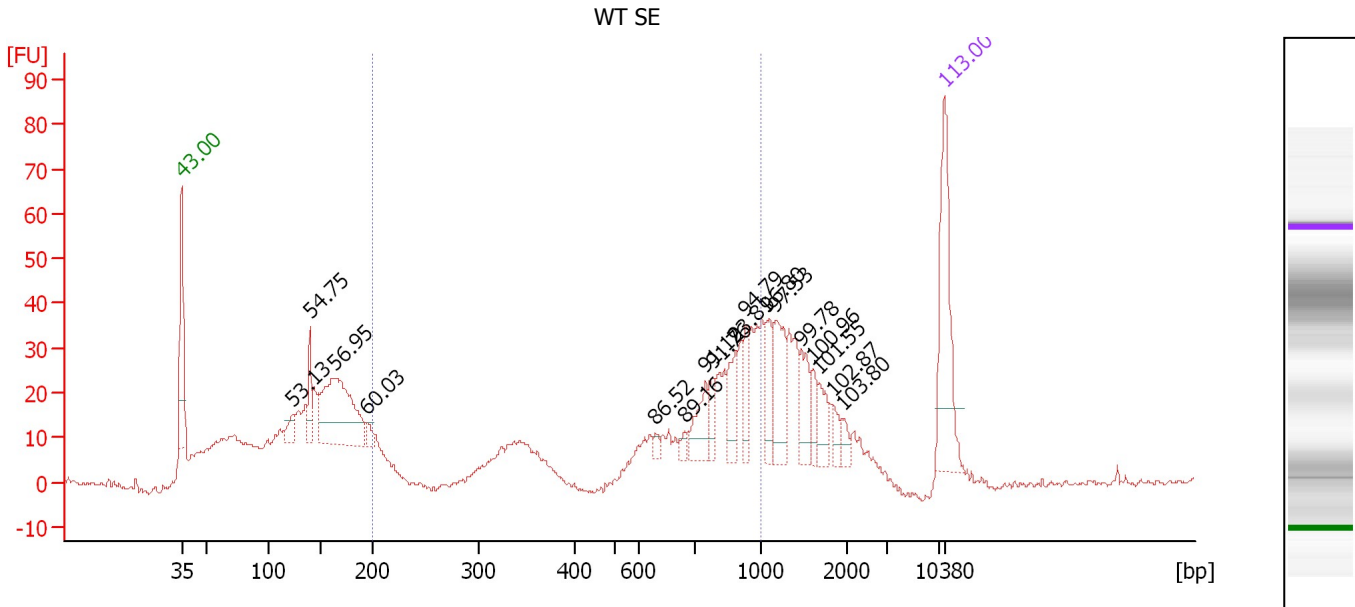
Region table for sample 9 : MeCP2 KO P

From [bp]	To [bp]	Average Size [bp]	Molarity [pmol/l]	Conc. [pg/ μ l]	Corr. Area	% of Total	Size distribution in CV [%]	Color
200	1,000	547	1,520.7	358.12	298.5	13	52.9	

Assay Class: High Sensitivity DNA Assay
 Data Path: C:\...ents and Settings\Bioanalyzer\2012-11-27\2012-11-27_001.xad

Created: 11/27/2012 1:18:18 PM
 Modified: 11/27/2012 2:12:51 PM

Electropherogram Summary Continued ...



Overall Results for sample 10 : WT SE

Number of peaks found: 17 Corr. Area 1: 330.2
 Noise: 0.6

Peak table for sample 10 : WT SE

Peak	Size [bp]	Conc. [pg/µl]	Molarity [pmol/l]	Observations
1	35	125.00	5,411.3	Lower Marker
2	123	16.82	207.7	
3	139	31.74	345.3	
4	162	152.79	1,428.3	
5	194	7.90	61.6	
6	630	4.62	11.1	
7	682	5.64	12.5	
8	751	29.33	59.2	
9	782	15.39	29.8	
10	883	27.67	47.5	
11	930	22.51	36.7	
12	1,074	26.46	37.3	
13	1,168	43.70	56.7	
14	1,457	27.03	28.1	
15	1,608	13.14	12.4	
16	1,683	17.26	15.5	
17	1,853	9.33	7.6	
18	1,972	7.18	5.5	
19	10,380	75.00	10.9	Upper Marker

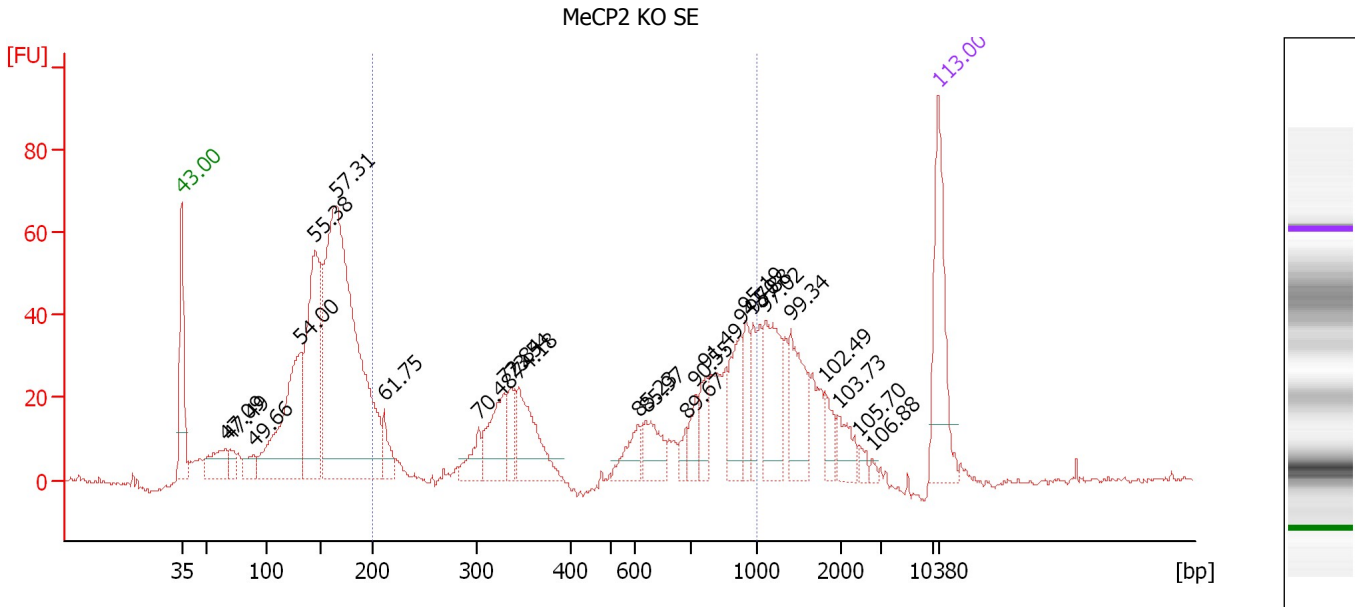
Region table for sample 10 : WT SE

From [bp]	To [bp]	Average Size [bp]	Molarity [pmol/l]	Conc. [pg/µl]	Corr. Area	% of Total	Size distribution in CV [%]	Color
200	1,000	700	1,237.1	417.02	330.2	33	33.6	Blue

Assay Class: High Sensitivity DNA Assay
 Data Path: C:\...ents and Settings\Bioanalyzer\2012-11-27\2012-11-27_001.xad

Created: 11/27/2012 1:18:18 PM
 Modified: 11/27/2012 2:12:51 PM

Electropherogram Summary Continued ...



Overall Results for sample 11 : MeCP2 KO SE

Number of peaks found: 25 Corr. Area 1: 487.7
 Noise: 0.6

Peak table for sample 11 : MeCP2 KO SE

Peak	Size [bp]	Conc. [pg/μl]	Molarity [pmol/l]	Observations
1	35	125.00	5,411.3	Lower Marker
2	66	47.95	1,106.4	
3	69	15.91	348.3	
4	89	23.09	394.6	
5	132	205.76	2,369.5	
6	146	205.48	2,136.1	
7	166	588.47	5,378.0	
8	212	27.97	199.9	
9	302	25.53	128.2	
10	329	60.58	279.0	
11	337	28.36	127.6	
12	344	77.45	340.9	
13	605	25.01	62.6	
14	620	32.21	78.8	
15	692	9.63	21.1	
16	724	20.04	42.0	
17	770	26.75	52.7	
18	926	45.44	74.4	
19	950	25.65	40.9	
20	984	23.17	35.7	
21	1,102	66.00	90.7	
22	1,400	52.86	57.2	
23	1,805	15.93	13.4	
24	1,963	19.25	14.9	
25	2,459	5.79	3.6	
26	2,781	2.66	1.5	


Assay Class: High Sensitivity DNA Assay
Data Path: C:\...ents and Settings\Bioanalyzer\2012-11-27\2012-11-27_001.xad

Created: 11/27/2012 1:18:18 PM
Modified: 11/27/2012 2:12:51 PM

Electropherogram Summary Continued ...**... Peak table for sample 11 : MeCP2 KO SE**

Peak	Size [bp]	Conc. [pg/ μ l]	Molarity [pmol/l]	Observations
27	10,380	75.00	10.9	Upper Marker

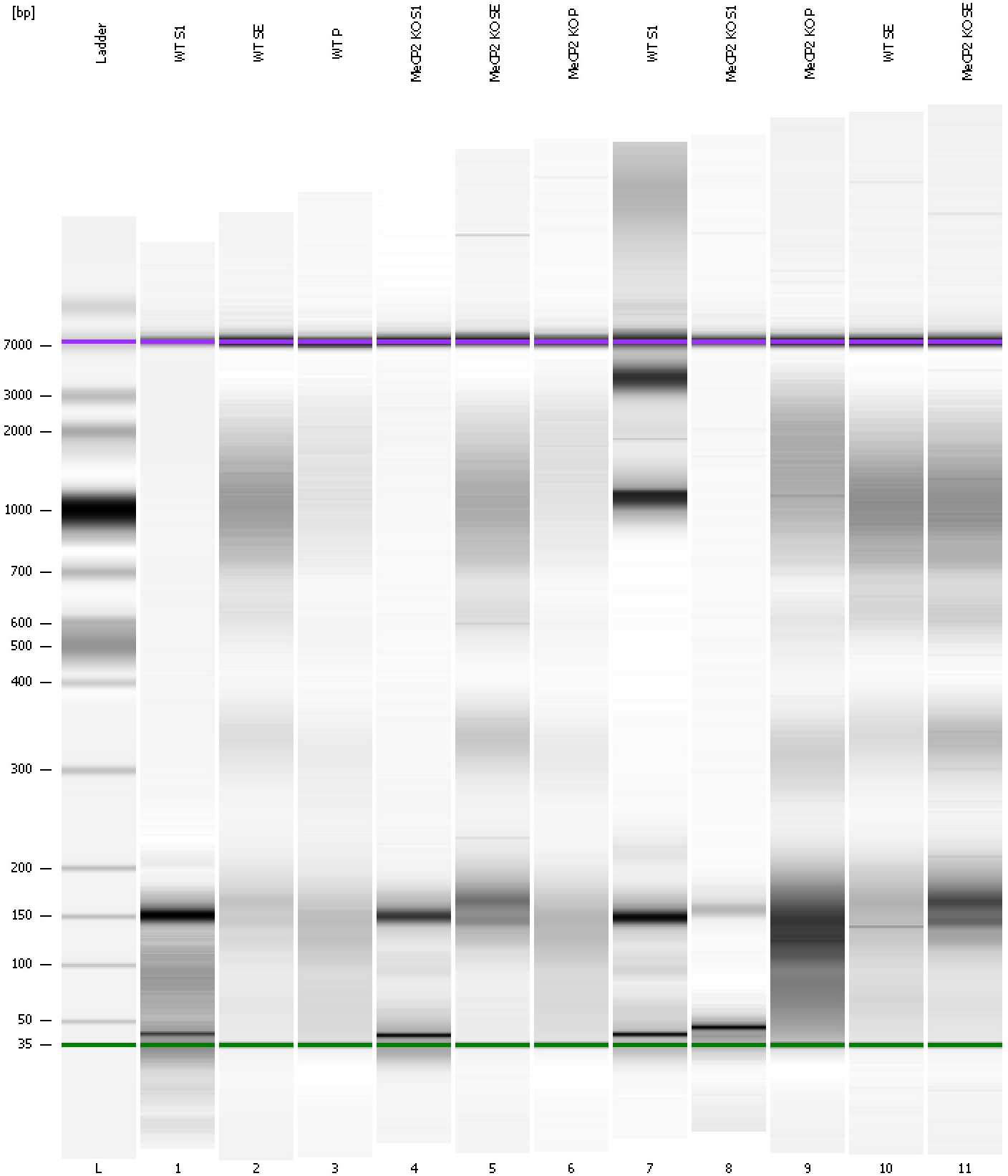
Region table for sample 11 : MeCP2 KO SE

From [bp]	To [bp]	Average Size [bp]	Molarity [pmol/l]	Conc. [pg/ μ l]	Corr. Area	% of Total	Size distribution in CV [%]	Color
200	1,000	608	1,960.8	543.05	487.7	33	43.2	

Assay Class: High Sensitivity DNA Assay
Data Path: C:\...ents and Settings\Bioanalyzer\2012-11-27\2012-11-27_001.xad

Created: 11/27/2012 1:18:18 PM
Modified: 11/27/2012 2:12:51 PM

Gel Image



Assay Class: High Sensitivity DNA Assay
 Data Path: C:\...ents and Settings\Bioanalyzer\2012-11-27\2012-11-27_001.xad

Created: 11/27/2012 1:18:18 PM
 Modified: 11/27/2012 2:12:51 PM

Run Logbook

Description	Number	Source	Category	Sub Category	Time	Time Zone	User	Host
Run ended on port 1 (Number of wells acquired: 12)		Instrument	Run		11/27/2012 1:59:39 PM	(GMT --08:00) Pacific Standard Time	UC Davis	D8XSMGH1
Run started on port 1 (File: C:\Documents and Settings\Bioanalyzer\2012-11-27\2012-11-27_001.xad)		Instrument	Run		11/27/2012 1:18:24 PM	(GMT --08:00) Pacific Standard Time	UC Davis	D8XSMGH1
Product Number : G2938B		Instrument	Run		11/27/2012 1:18:24 PM	(GMT --08:00) Pacific Standard Time	UC Davis	D8XSMGH1
Name :		Instrument	Run		11/27/2012 1:18:24 PM	(GMT --08:00) Pacific Standard Time	UC Davis	D8XSMGH1
Vendor : Agilent Technologies		Instrument	Run		11/27/2012 1:18:24 PM	(GMT --08:00) Pacific Standard Time	UC Davis	D8XSMGH1
Serial# : DE13701086		Instrument	Run		11/27/2012 1:18:24 PM	(GMT --08:00) Pacific Standard Time	UC Davis	D8XSMGH1
Firmware : C.01.069		Instrument	Run		11/27/2012 1:18:24 PM	(GMT --08:00) Pacific Standard Time	UC Davis	D8XSMGH1
Cartridge : Electrode		Instrument	Run		11/27/2012 1:18:24 PM	(GMT --08:00) Pacific Standard Time	UC Davis	D8XSMGH1