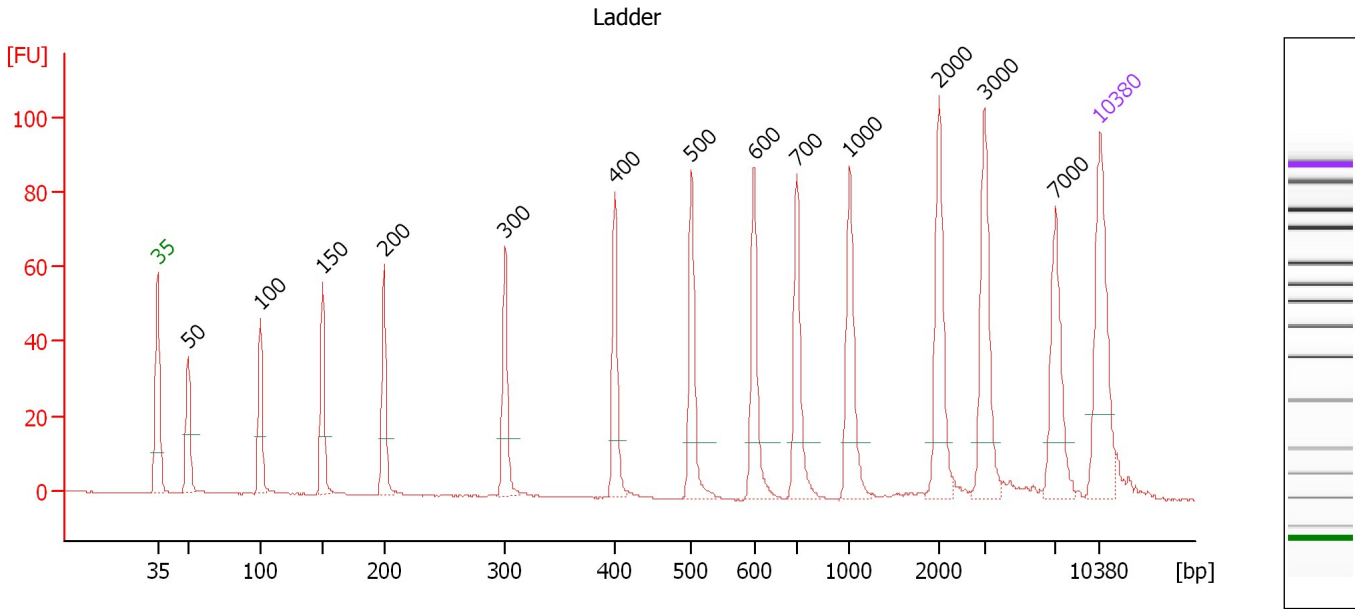


Assay Class: High Sensitivity DNA Assay  
 Data Path: C:\...ents and Settings\Bioanalyzer\2012-11-28\2012-11-28\_002.xad

Created: 11/28/2012 1:32:10 PM  
 Modified: 11/28/2012 2:15:55 PM

**Electropherogram Summary**



**Overall Results for Ladder**

Noise: 0.1

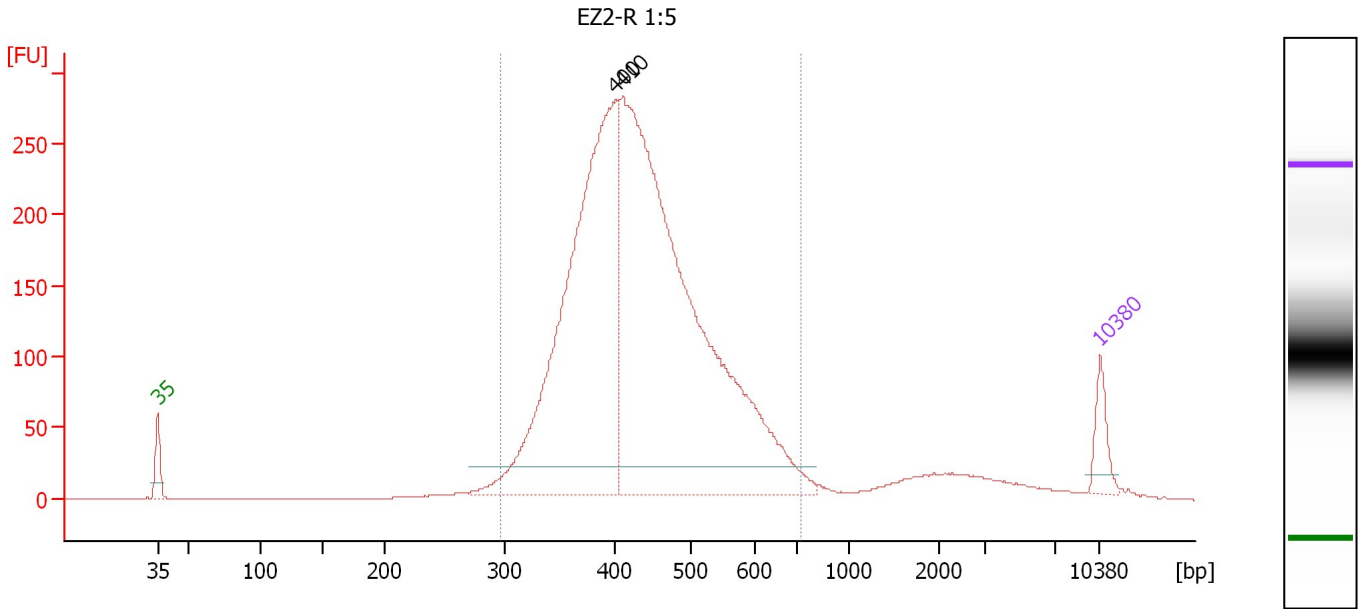
**Peak table for Ladder**

Peak	Size [bp]	Conc. [pg/µl]	Molarity [pmol/l]	Observations
1	35	125.00	5,411.3	Lower Marker
2	50	150.00	4,545.5	Ladder Peak
3	100	150.00	2,272.7	Ladder Peak
4	150	150.00	1,515.2	Ladder Peak
5	200	150.00	1,136.4	Ladder Peak
6	300	150.00	757.6	Ladder Peak
7	400	150.00	568.2	Ladder Peak
8	500	150.00	454.5	Ladder Peak
9	600	150.00	378.8	Ladder Peak
10	700	150.00	324.7	Ladder Peak
11	1,000	150.00	227.3	Ladder Peak
12	2,000	150.00	113.6	Ladder Peak
13	3,000	150.00	75.8	Ladder Peak
14	7,000	150.00	32.5	Ladder Peak
15	10,380	75.00	10.9	Upper Marker

Assay Class: High Sensitivity DNA Assay  
 Data Path: C:\...ents and Settings\Bioanalyzer\2012-11-28\2012-11-28\_002.xad

Created: 11/28/2012 1:32:10 PM  
 Modified: 11/28/2012 2:15:55 PM

**Electropherogram Summary Continued ...**



**Overall Results for sample 1 : EZ2-R 1:5**

Number of peaks found: 2                      Corr. Area 1: 3,990.0  
 Noise: 0.2

**Peak table for sample 1 : EZ2-R 1:5**

Peak	Size [bp]	Conc. [pg/μl]	Molarity [pmol/l]	Observations
1	35	125.00	5,411.3	Lower Marker
2	400	2,050.03	7,767.5	
3	410	2,904.47	10,731.3	
4	10,380	75.00	10.9	Upper Marker

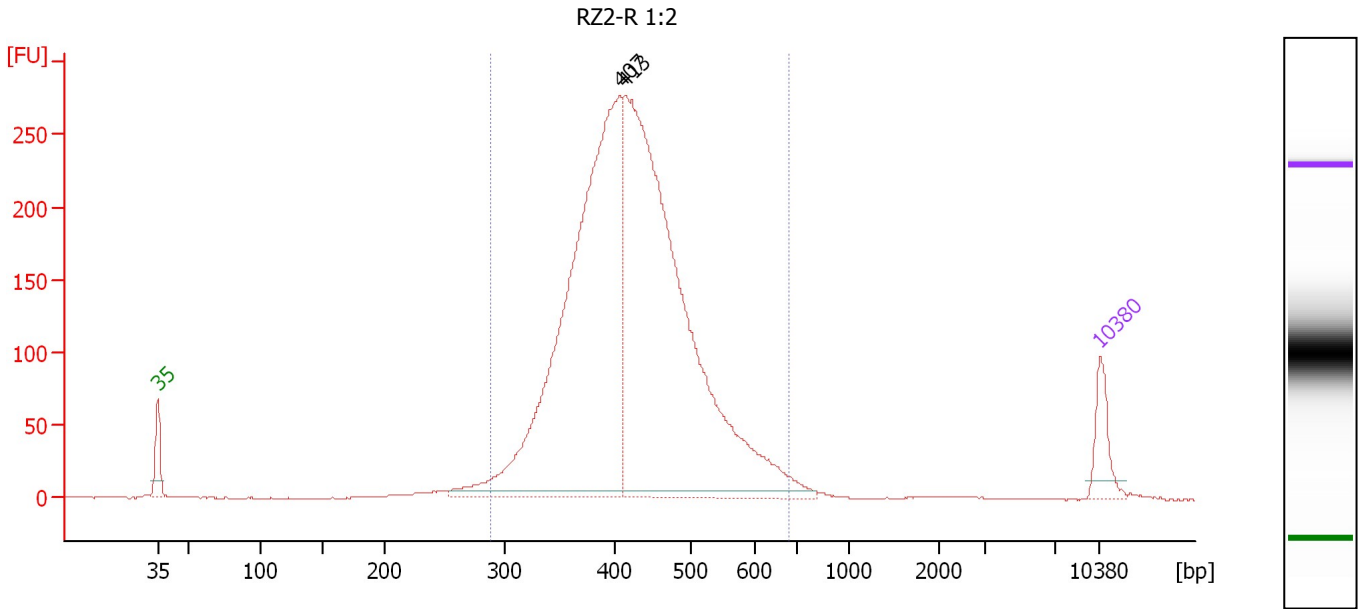
**Region table for sample 1 : EZ2-R 1:5**

From [bp]	To [bp]	Average Size [bp]	Molarity [pmol/l]	Conc. [pg/μl]	Corr. Area	% of Total	Size distribution in CV [%]	Color
295	719	439	17,928.2	5,000.62	3,990.0	92	18.0	Blue

Assay Class: High Sensitivity DNA Assay  
 Data Path: C:\...ents and Settings\Bioanalyzer\2012-11-28\2012-11-28\_002.xad

Created: 11/28/2012 1:32:10 PM  
 Modified: 11/28/2012 2:15:55 PM

**Electropherogram Summary Continued ...**



**Overall Results for sample 2 : RZ2-R 1:2**

Number of peaks found: 2                      Corr. Area 1: 3,568.1  
 Noise: 0.2

**Peak table for sample 2 : RZ2-R 1:2**

Peak	Size [bp]	Conc. [pg/μl]	Molarity [pmol/l]	Observations
1	35	125.00	5,411.3	Lower Marker
2	407	1,825.62	6,795.4	
3	413	2,076.87	7,624.7	
4	10,380	75.00	10.9	Upper Marker

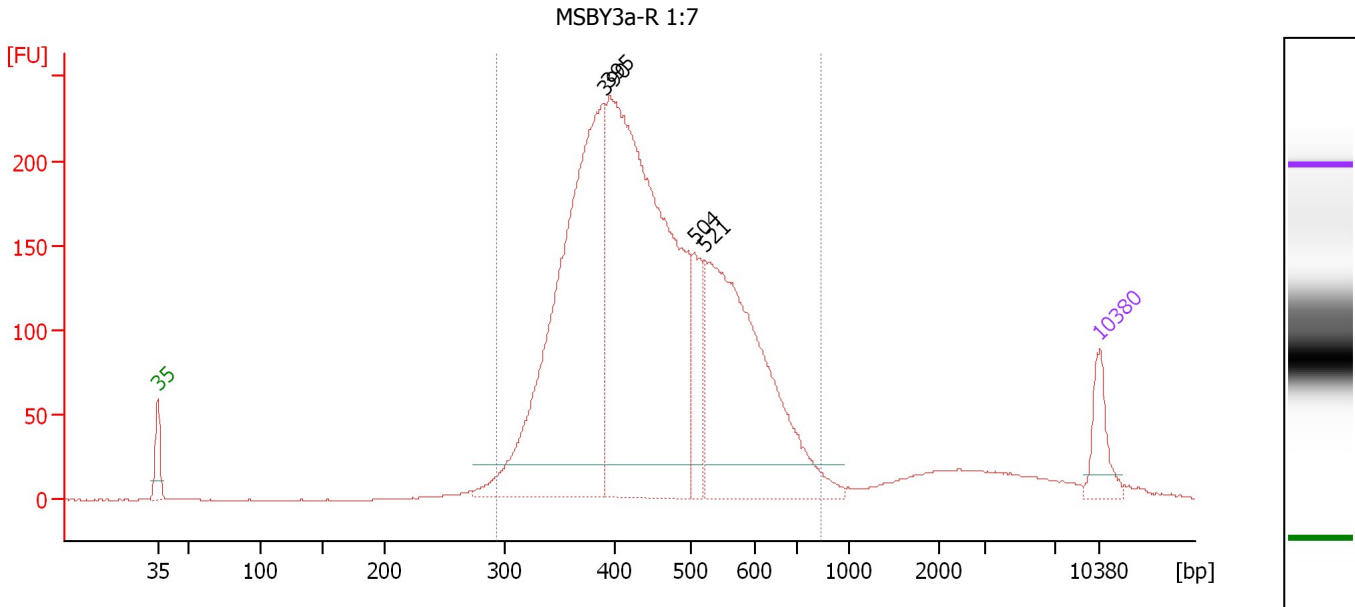
**Region table for sample 2 : RZ2-R 1:2**

From [bp]	To [bp]	Average Size [bp]	Molarity [pmol/l]	Conc. [pg/μl]	Corr. Area	% of Total	Size distribution in CV [%]	Color
288	681	427	14,288.1	3,906.67	3,568.1	96	16.1	Blue

Assay Class: High Sensitivity DNA Assay  
 Data Path: C:\...ents and Settings\Bioanalyzer\2012-11-28\2012-11-28\_002.xad

Created: 11/28/2012 1:32:10 PM  
 Modified: 11/28/2012 2:15:55 PM

**Electropherogram Summary Continued ...**



**Overall Results for sample 3 : MSBY3a-R 1:7**

Number of peaks found: 4                      Corr. Area 1: 3,931.4  
 Noise: 0.2

**Peak table for sample 3 : MSBY3a-R 1:7**

Peak	Size [bp]	Conc. [pg/μl]	Molarity [pmol/l]	Observations
1	35	125.00	5,411.3	Lower Marker
2	390	1,403.26	5,450.7	
3	395	1,742.44	6,679.0	
4	504	150.43	452.0	
5	521	947.03	2,751.7	
6	10,380	75.00	10.9	Upper Marker

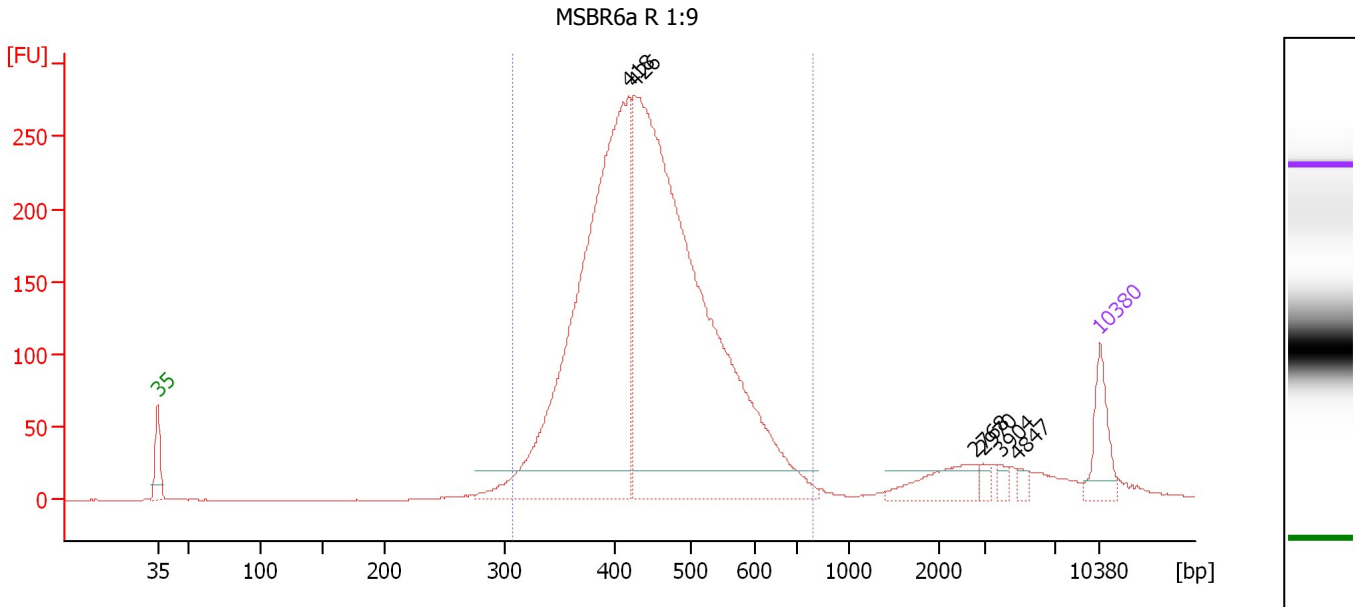
**Region table for sample 3 : MSBY3a-R 1:7**

From [bp]	To [bp]	Average Size [bp]	Molarity [pmol/l]	Conc. [pg/μl]	Corr. Area	% of Total	Size distribution in CV [%]	Color
293	836	455	14,930.7	4,244.55	3,931.3	92	21.2	Blue

Assay Class: High Sensitivity DNA Assay  
 Data Path: C:\...ents and Settings\Bioanalyzer\2012-11-28\2012-11-28\_002.xad

Created: 11/28/2012 1:32:10 PM  
 Modified: 11/28/2012 2:15:55 PM

**Electropherogram Summary Continued ...**



**Overall Results for sample 4 : MSBR6a R 1:9**

Number of peaks found: 6                      Corr. Area 1: 3,731.1  
 Noise: 0.2

**Peak table for sample 4 : MSBR6a R 1:9**

Peak	Size [bp]	Conc. [pg/μl]	Molarity [pmol/l]	Observations
1	35	125.00	5,411.3	Lower Marker
2	418	1,536.08	5,563.1	
3	426	2,084.51	7,414.9	
4	2,768	81.83	44.8	
5	2,970	14.78	7.5	
6	3,904	13.98	5.4	
7	4,847	12.98	4.1	
8	10,380	75.00	10.9	Upper Marker

**Region table for sample 4 : MSBR6a R 1:9**

From [bp]	To [bp]	Average Size [bp]	Molarity [pmol/l]	Conc. [pg/μl]	Corr. Area	% of Total	Size distribution in CV [%]	Color
307	793	451	12,467.2	3,575.60	3,731.1	91	17.5	Blue