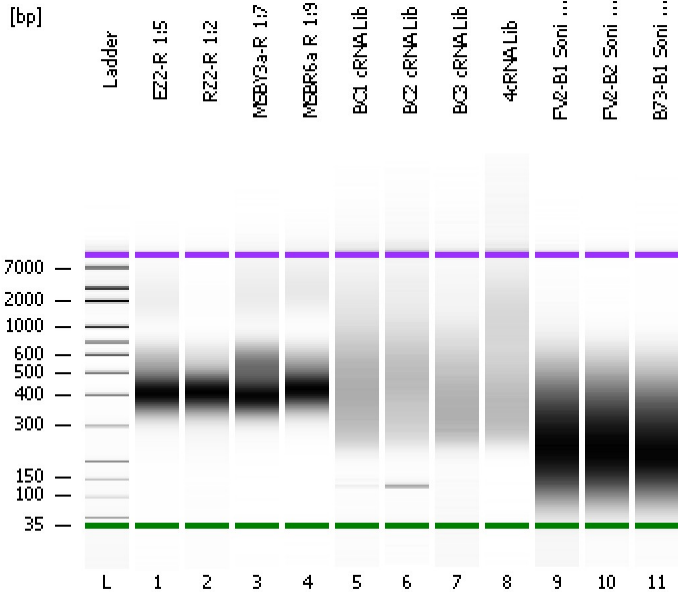


Assay Class: High Sensitivity DNA Assay
Data Path: C:\...ents and Settings\Bioanalyzer\2012-11-28\2012-11-28_002.xad

Created: 11/28/2012 1:32:10 PM
Modified: 11/28/2012 2:15:55 PM

Electrophoresis File Run Summary



Instrument Information:

Instrument Name: DE13701086 Firmware: C.01.069
Serial#: DE13701086 Type: G2938B

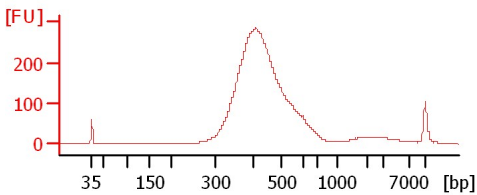
Assay Information:

Assay Origin Path: C:\Program Files\Agilent\2100 bioanalyzer\2100 expert\assays\dsDNA\High Sensitivity DNA.xsy
Assay Class: High Sensitivity DNA Assay
Version: 1.03
Assay Comments: Copyright © 2003-2010 Agilent Technologies

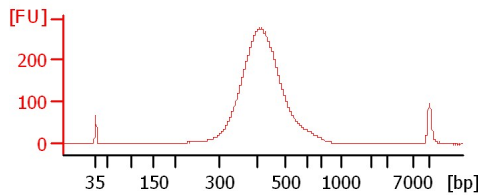
Chip Information:

Chip Lot #:
Reagent Kit Lot #:
Chip Comments:

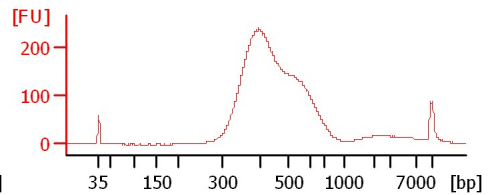
EZ2-R 1:5



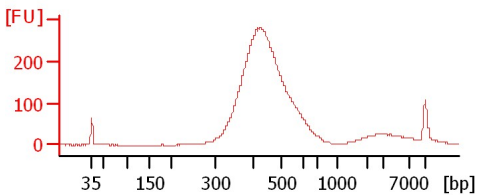
RZ2-R 1:2



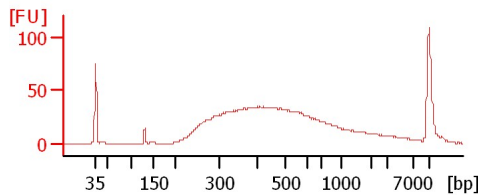
MSBY3a-R 1:7



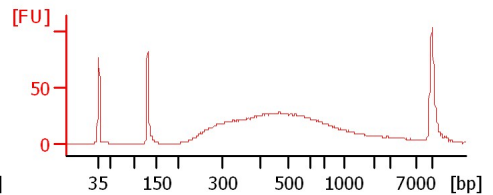
MSBR6a R 1:9



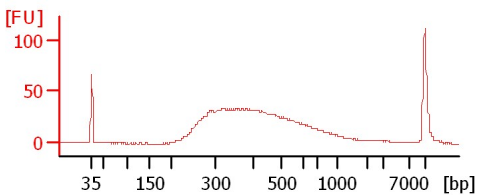
BC1 cRNA Lib



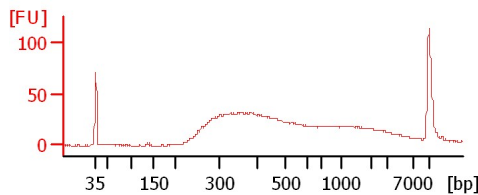
BC2 cRNA Lib



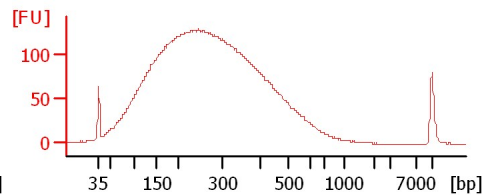
BC3 cRNA Lib



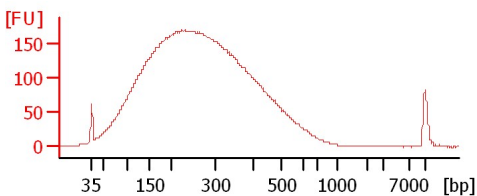
4cRNA Lib



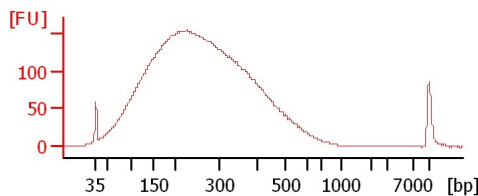
FV2-B1 Soni 1:6



FV2-B2 Soni 1:5



B73-B1 Soni 1:7



Assay Class: High Sensitivity DNA Assay
 Data Path: C:\...ents and Settings\Bioanalyzer\2012-11-28\2012-11-28_002.xad

Created: 11/28/2012 1:32:10 PM
 Modified: 11/28/2012 2:15:55 PM

Electrophoresis File Run Summary (Chip Summary)

Sample Name	Sample Comment	Rest. Digest	Status	Observation	Result Label	Result Color
EZ2-R 1:5		<input type="checkbox"/>	✓			
RZ2-R 1:2		<input type="checkbox"/>	✓			
MSBY3a-R 1:7		<input type="checkbox"/>	✓			
MSBR6a R 1:9		<input type="checkbox"/>	✓			
BC1 cRNA Lib		<input type="checkbox"/>	✓			
BC2 cRNA Lib		<input type="checkbox"/>	✓			
BC3 cRNA Lib		<input type="checkbox"/>	✓			
4cRNA Lib		<input type="checkbox"/>	✓			
FV2-B1 Soni 1:6		<input type="checkbox"/>	✓			
FV2-B2 Soni 1:5		<input type="checkbox"/>	✓			
B73-B1 Soni 1:7		<input type="checkbox"/>	✓			
Ladder		<input type="checkbox"/>	✓			

Chip Lot #

Reagent Kit Lot #

Chip Comments :

Assay Class: High Sensitivity DNA Assay
Data Path: C:\...ents and Settings\Bioanalyzer\2012-11-28\2012-11-28_002.xad

Created: 11/28/2012 1:32:10 PM
Modified: 11/28/2012 2:15:55 PM

Electrophoresis Assay Details

General Analysis Settings

Number of Available Sample and Ladder Wells (Max.) : 12
Minimum Visible Range [s] : 32
Maximum Visible Range [s] : 138
Start Analysis Time Range [s] : 33
End Analysis Time Range [s] : 137.5
Ladder Concentration [pg/μl] : 1950
Uses Standard Area for Ladder Fragments
Lower Marker Concentration [pg/μl] : 125
Upper Marker Concentration [pg/μl] : 75
Used Upper Marker for Quantitation
Standard Curve Fit is Point to Point
Show Data Aligned to Lower and Upper Marker

Integrator Settings

Integration Start Time [s] : 33.05
Integration End Time [s] : 137
Slope Threshold : 0.8
Height Threshold [FU] : 5
Area Threshold : 0.1
Width Threshold [s] : 0.6
Baseline Plateau [s] : 0.5

Filter Settings

Filter Width [s] : 0.5
Polynomial Order : 4

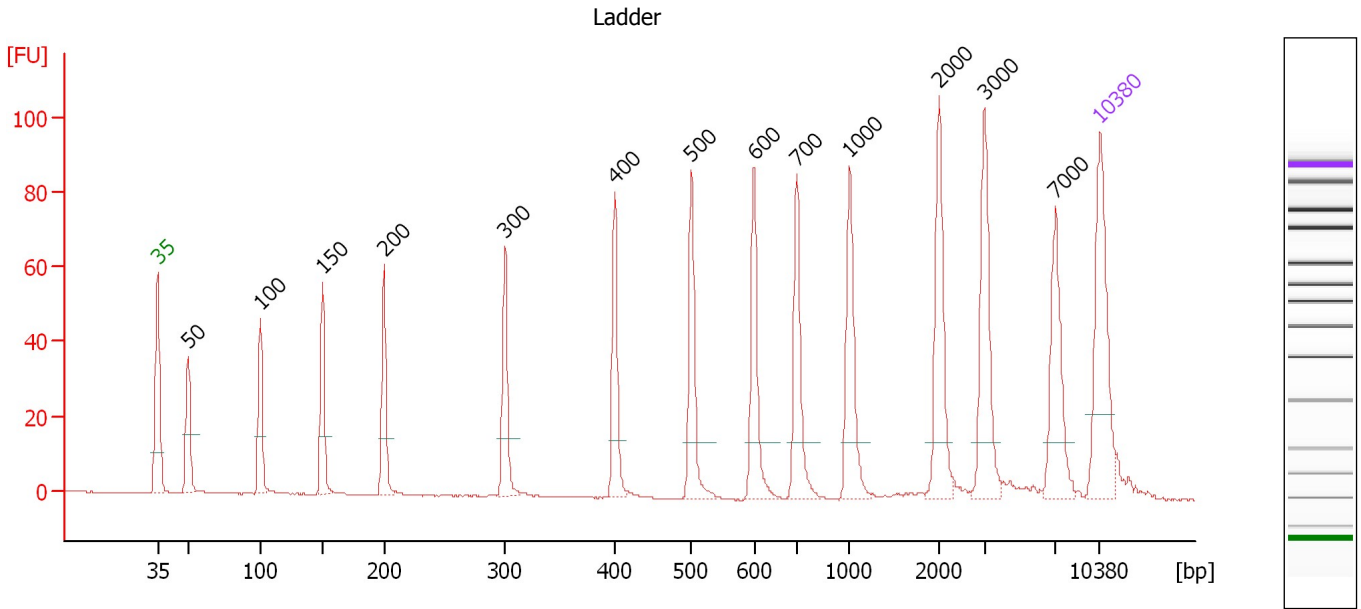
Ladder

Ladder Peak	Size	Area
1	35	160
2	50	210
3	100	208
4	150	221
5	200	242
6	300	270
7	400	305
8	500	306
9	600	336
10	700	321
11	1000	366
12	2000	413
13	3000	411
14	7000	400
15	10380	214

Assay Class: High Sensitivity DNA Assay
 Data Path: C:\...ents and Settings\Bioanalyzer\2012-11-28\2012-11-28_002.xad

Created: 11/28/2012 1:32:10 PM
 Modified: 11/28/2012 2:15:55 PM

Electropherogram Summary



Overall Results for Ladder

Noise: 0.1

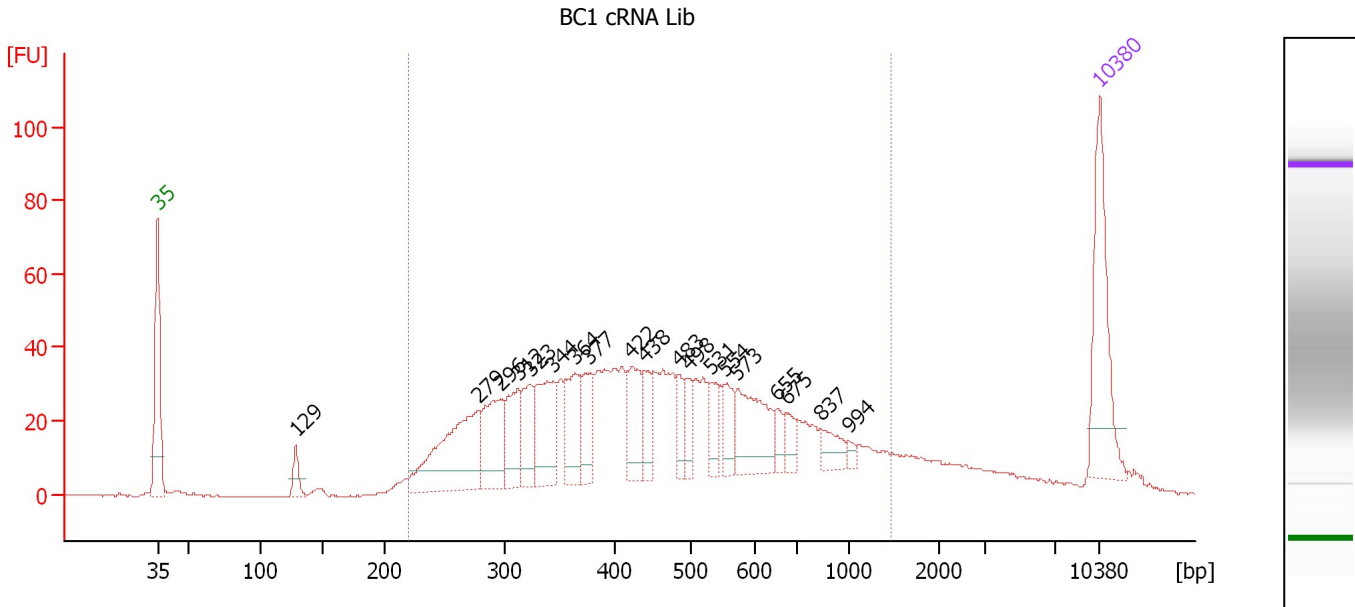
Peak table for Ladder

Peak	Size [bp]	Conc. [pg/μl]	Molarity [pmol/l]	Observations
1	35	125.00	5,411.3	Lower Marker
2	50	150.00	4,545.5	Ladder Peak
3	100	150.00	2,272.7	Ladder Peak
4	150	150.00	1,515.2	Ladder Peak
5	200	150.00	1,136.4	Ladder Peak
6	300	150.00	757.6	Ladder Peak
7	400	150.00	568.2	Ladder Peak
8	500	150.00	454.5	Ladder Peak
9	600	150.00	378.8	Ladder Peak
10	700	150.00	324.7	Ladder Peak
11	1,000	150.00	227.3	Ladder Peak
12	2,000	150.00	113.6	Ladder Peak
13	3,000	150.00	75.8	Ladder Peak
14	7,000	150.00	32.5	Ladder Peak
15	10,380	75.00	10.9	Upper Marker

Assay Class: High Sensitivity DNA Assay
 Data Path: C:\...ents and Settings\Bioanalyzer\2012-11-28\2012-11-28_002.xad

Created: 11/28/2012 1:32:10 PM
 Modified: 11/28/2012 2:15:55 PM

Electropherogram Summary Continued ...



Overall Results for sample 5 : BC1 cRNA Lib

Number of peaks found: 19 Corr. Area 1: 1,185.2
 Noise: 0.3

Peak table for sample 5 : BC1 cRNA Lib

Peak	Size [bp]	Conc. [pg/μl]	Molarity [pmol/l]	Observations
1	35	125.00	5,411.3	Lower Marker
2	129	18.17	213.8	
3	279	134.06	728.9	
4	296	69.28	354.5	
5	312	51.85	251.8	
6	323	41.14	193.1	
7	344	67.45	297.2	
8	364	52.79	219.5	
9	377	37.58	151.0	
10	422	47.45	170.3	
11	438	26.71	92.3	
12	483	22.50	70.6	
13	498	21.61	65.8	
14	531	25.36	72.4	
15	554	26.19	71.6	
16	573	65.82	174.1	
17	655	12.60	29.2	
18	675	14.90	33.5	
19	837	18.56	33.6	
20	994	5.23	8.0	
21	10,380	75.00	10.9	Upper Marker

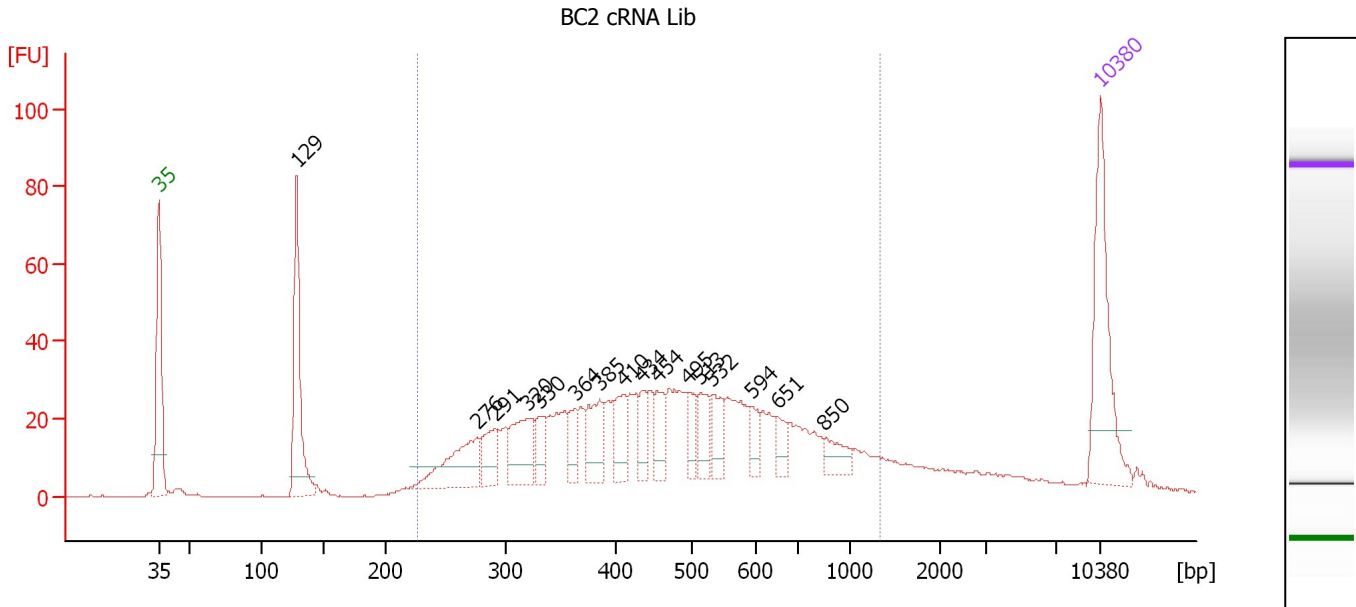
Region table for sample 5 : BC1 cRNA Lib

From [bp]	To [bp]	Average Size [bp]	Molarity [pmol/l]	Conc. [pg/μl]	Corr. Area	% of Total	Size distribution in CV [%]	Color
220	1,468	494	4,686.4	1,233.48	1,185.1	88	46.0	Blue

Assay Class: High Sensitivity DNA Assay
 Data Path: C:\...ents and Settings\Bioanalyzer\2012-11-28\2012-11-28_002.xad

Created: 11/28/2012 1:32:10 PM
 Modified: 11/28/2012 2:15:55 PM

Electropherogram Summary Continued ...



Overall Results for sample 6 : BC2 cRNA Lib

Number of peaks found: 16 Corr. Area 1: 877.0
 Noise: 0.3

Peak table for sample 6 : BC2 cRNA Lib

Peak	Size [bp]	Conc. [pg/μl]	Molarity [pmol/l]	Observations
1	35	125.00	5,411.3	Lower Marker
2	129	122.39	1,441.5	
3	276	64.01	351.5	
4	291	31.40	163.3	
5	320	50.60	239.9	
6	330	23.54	108.1	
7	364	19.41	80.8	
8	385	39.33	154.7	
9	410	31.01	114.6	
10	434	19.81	69.1	
11	454	23.58	78.6	
12	495	19.60	60.0	
13	513	24.21	71.5	
14	532	23.91	68.1	
15	594	15.50	39.6	
16	651	14.42	33.6	
17	850	16.84	30.0	
18	10,380	75.00	10.9	Upper Marker

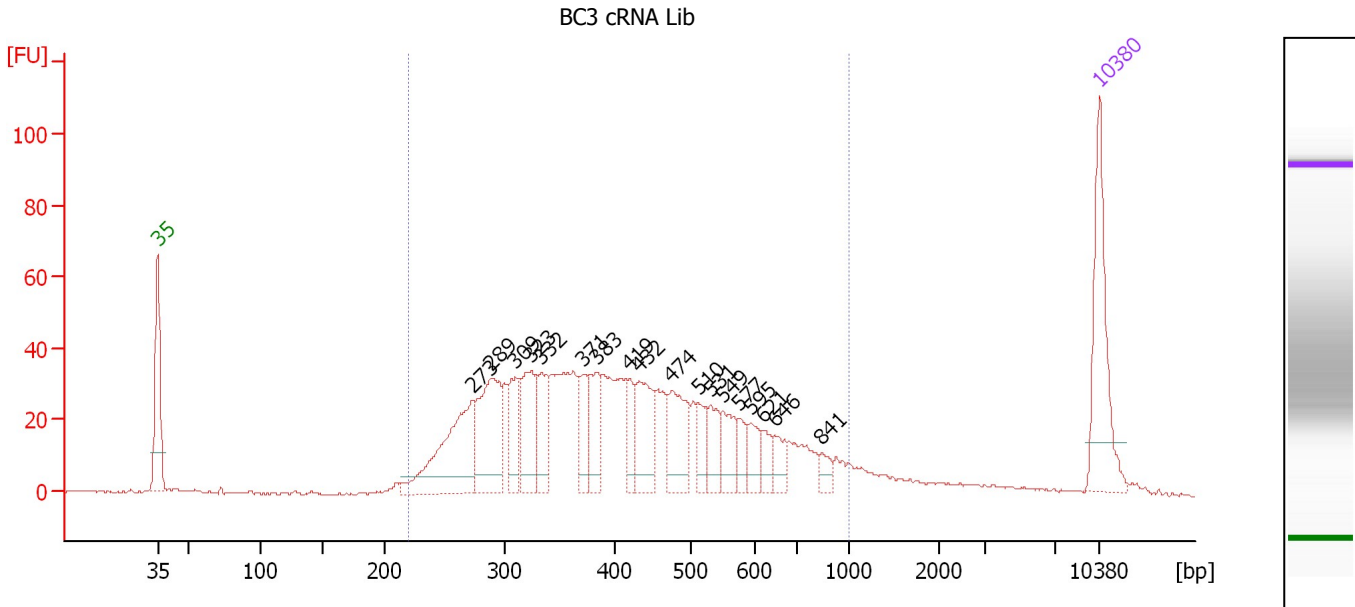
Region table for sample 6 : BC2 cRNA Lib

From [bp]	To [bp]	Average Size [bp]	Molarity [pmol/l]	Conc. [pg/μl]	Corr. Area	% of Total	Size distribution in CV [%]	Color
227	1,332	502	3,370.5	919.46	877.0	79	41.4	Blue

Assay Class: High Sensitivity DNA Assay
 Data Path: C:\...ents and Settings\Bioanalyzer\2012-11-28\2012-11-28_002.xad

Created: 11/28/2012 1:32:10 PM
 Modified: 11/28/2012 2:15:55 PM

Electropherogram Summary Continued ...



Overall Results for sample 7 : BC3 cRNA Lib

Number of peaks found: 18 Corr. Area 1: 1,038.8
 Noise: 0.3

Peak table for sample 7 : BC3 cRNA Lib

Peak	Size [bp]	Conc. [pg/μl]	Molarity [pmol/l]	Observations
1	35	125.00	5,411.3	Lower Marker
2	273	130.47	723.5	
3	289	108.30	568.2	
4	309	45.92	225.1	
5	323	68.47	320.9	
6	332	45.44	207.1	
7	371	31.55	128.8	
8	383	42.76	169.0	
9	419	27.61	99.8	
10	432	58.73	205.8	
11	474	55.79	178.2	
12	510	21.37	63.5	
13	531	27.06	77.3	
14	549	31.83	87.8	
15	577	15.98	42.0	
16	595	20.49	52.2	
17	621	15.38	37.5	
18	646	15.84	37.1	
19	841	9.67	17.4	
20	10,380	75.00	10.9	Upper Marker

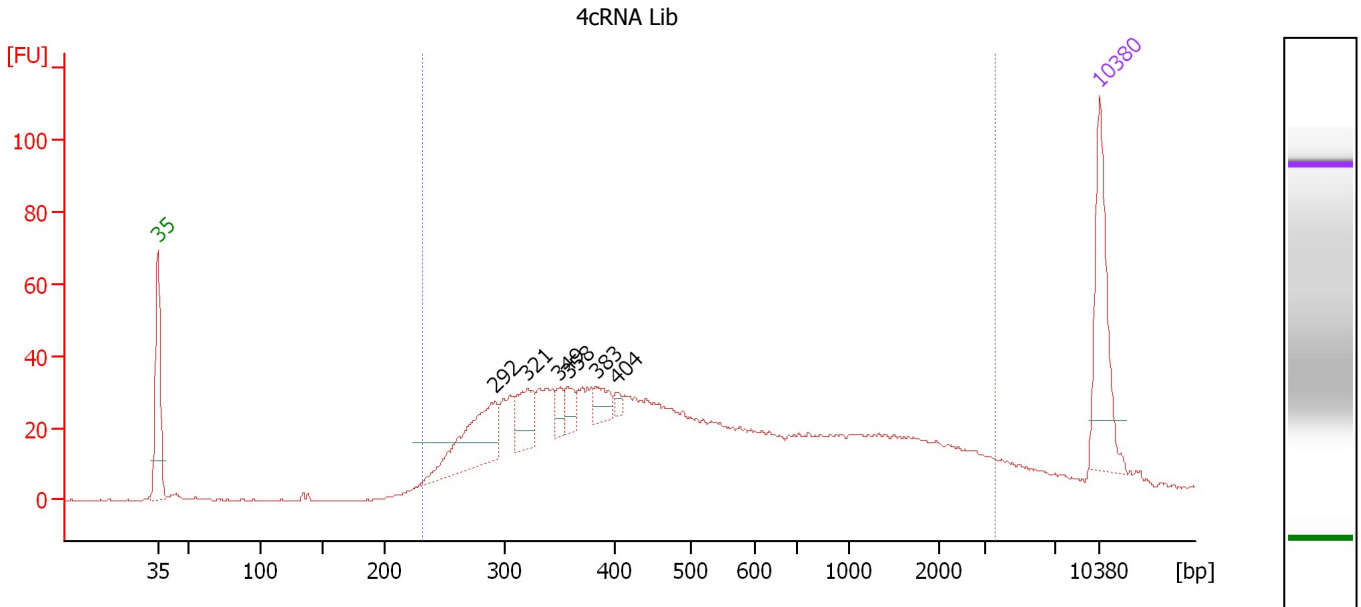
Region table for sample 7 : BC3 cRNA Lib

From [bp]	To [bp]	Average Size [bp]	Molarity [pmol/l]	Conc. [pg/μl]	Corr. Area	% of Total	Size distribution in CV [%]	Color
220	1,000	433	4,561.7	1,129.48	1,038.8	92	34.6	Blue

Assay Class: High Sensitivity DNA Assay
 Data Path: C:\...ents and Settings\Bioanalyzer\2012-11-28\2012-11-28_002.xad

Created: 11/28/2012 1:32:10 PM
 Modified: 11/28/2012 2:15:55 PM

Electropherogram Summary Continued ...



Overall Results for sample 8 : 4cRNA Lib

Number of peaks found: 6 Corr. Area 1: 1,082.6
 Noise: 0.2

Peak table for sample 8 : 4cRNA Lib

Peak	Size [bp]	Conc. [pg/μl]	Molarity [pmol/l]	Observations
1	35	125.00	5,411.3	Lower Marker
2	292	102.03	530.0	
3	321	39.19	185.3	
4	349	14.44	62.7	
5	358	18.06	76.5	
6	383	21.05	83.3	
7	404	5.82	21.8	
8	10,380	75.00	10.9	Upper Marker

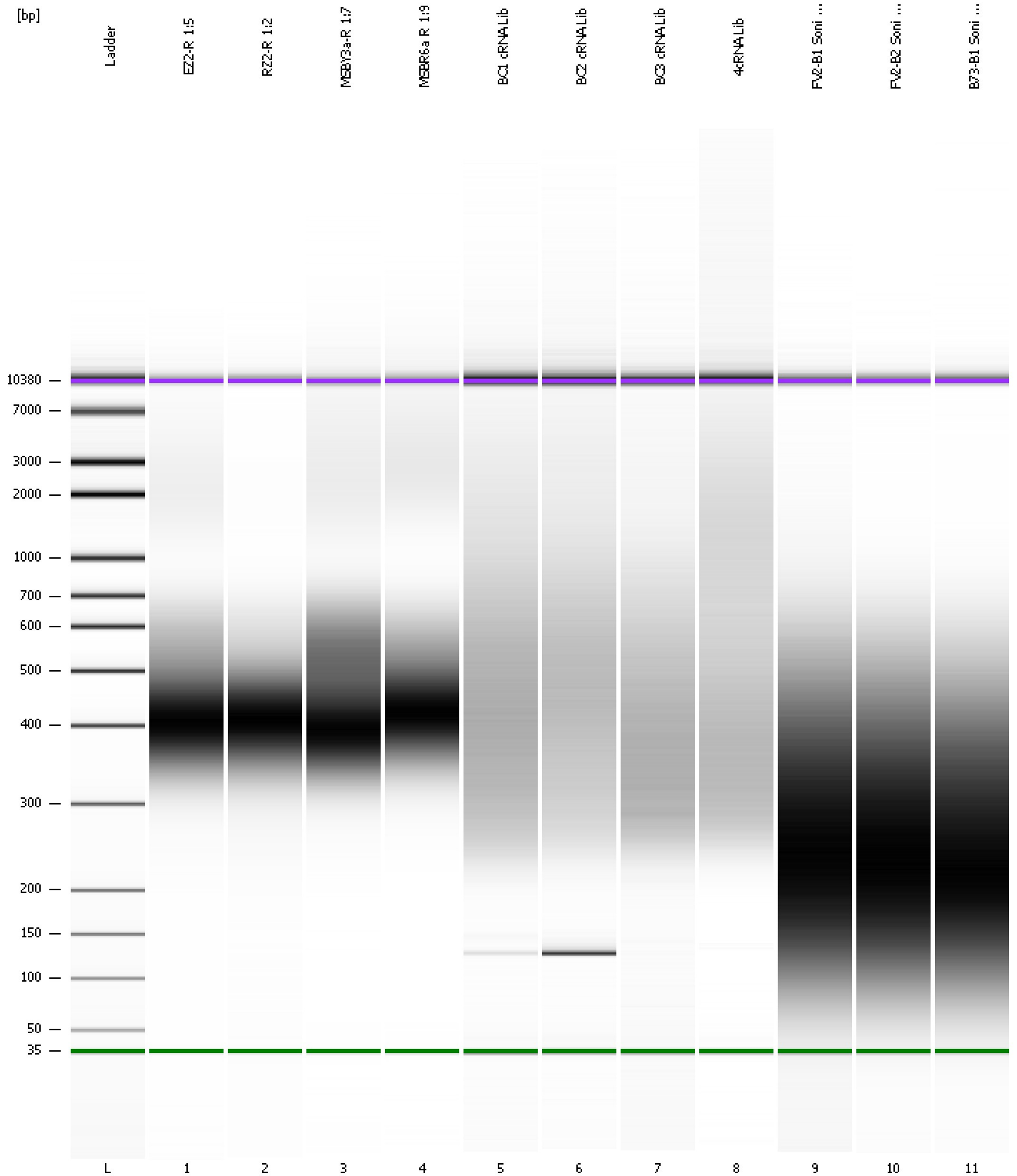
Region table for sample 8 : 4cRNA Lib

From [bp]	To [bp]	Average Size [bp]	Molarity [pmol/l]	Conc. [pg/μl]	Corr. Area	% of Total	Size distribution in CV [%]	Color
232	3,643	715	4,288.1	1,204.73	1,082.6	92	87.6	Blue

Assay Class: High Sensitivity DNA Assay
Data Path: C:\...ents and Settings\Bioanalyzer\2012-11-28\2012-11-28_002.xad

Created: 11/28/2012 1:32:10 PM
Modified: 11/28/2012 2:15:55 PM

Gel Image



Assay Class: High Sensitivity DNA Assay
 Data Path: C:\...ents and Settings\Bioanalyzer\2012-11-28\2012-11-28_002.xad

Created: 11/28/2012 1:32:10 PM
 Modified: 11/28/2012 2:15:55 PM

Run Logbook

Description	Number	Source	Category	Sub Category	Time	Time Zone	User	Host
Run ended on port 1 (Number of wells acquired: 12)		Instrument	Run		11/28/2012 2:13:29 PM	(GMT --08:00) Pacific Standard Time	UC Davis	D8XSMGH1
Run started on port 1 (File: C:\Documents and Settings\Bioanalyzer\2012-11-28\2012-11-28_002.xad)		Instrument	Run		11/28/2012 1:32:16 PM	(GMT --08:00) Pacific Standard Time	UC Davis	D8XSMGH1
Product Number : G2938B		Instrument	Run		11/28/2012 1:32:16 PM	(GMT --08:00) Pacific Standard Time	UC Davis	D8XSMGH1
Name :		Instrument	Run		11/28/2012 1:32:16 PM	(GMT --08:00) Pacific Standard Time	UC Davis	D8XSMGH1
Vendor : Agilent Technologies		Instrument	Run		11/28/2012 1:32:16 PM	(GMT --08:00) Pacific Standard Time	UC Davis	D8XSMGH1
Serial# : DE13701086		Instrument	Run		11/28/2012 1:32:16 PM	(GMT --08:00) Pacific Standard Time	UC Davis	D8XSMGH1
Firmware : C.01.069		Instrument	Run		11/28/2012 1:32:16 PM	(GMT --08:00) Pacific Standard Time	UC Davis	D8XSMGH1
Cartridge : Electrode		Instrument	Run		11/28/2012 1:32:16 PM	(GMT --08:00) Pacific Standard Time	UC Davis	D8XSMGH1