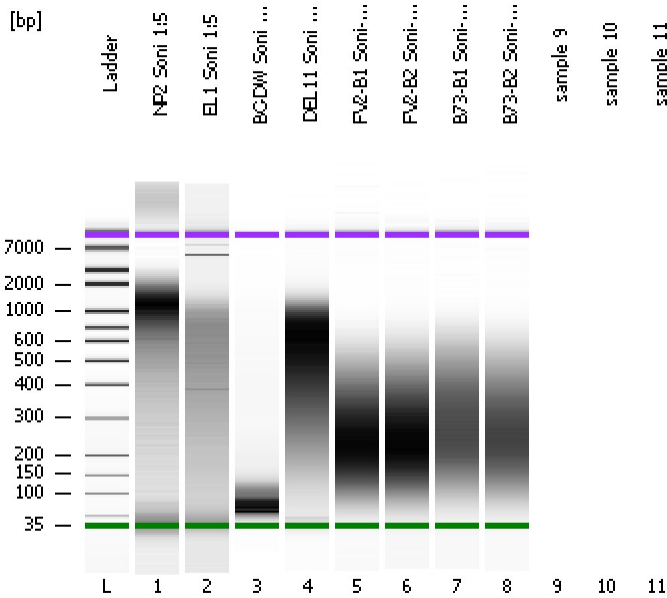


Assay Class: High Sensitivity DNA Assay  
Data Path: C:\...ents and Settings\Bioanalyzer\2012-11-30\2012-11-30\_003.xad

Created: 11/30/2012 12:45:56 PM  
Modified: 11/30/2012 1:25:55 PM

**Electrophoresis File Run Summary**



Instrument Information:

Instrument Name: DE13701086      Firmware: C.01.069  
Serial#: DE13701086      Type: G2938B

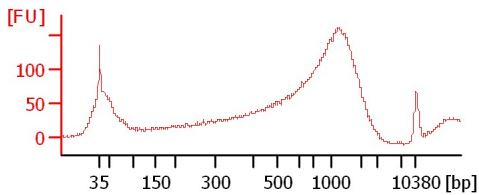
Assay Information:

Assay Origin Path: C:\Program Files\Agilent\2100 bioanalyzer\2100 expert\assays\dsDNA\High Sensitivity DNA.xsy  
Assay Class: High Sensitivity DNA Assay  
Version: 1.03  
Assay Comments: Copyright © 2003-2010 Agilent Technologies

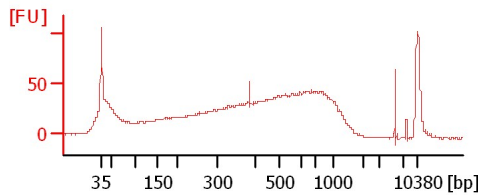
Chip Information:

Chip Lot #:   
Reagent Kit Lot #:   
Chip Comments:

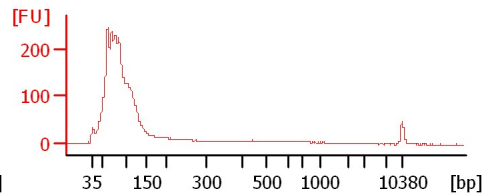
**NP2 Soni 1:5**



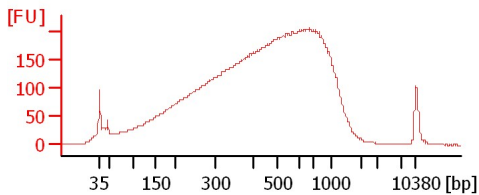
**EL1 Soni 1:5**



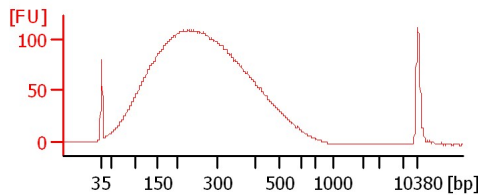
**BC-DW Soni 1:2**



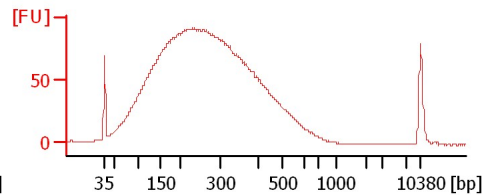
**DEL11 Soni 1:5**



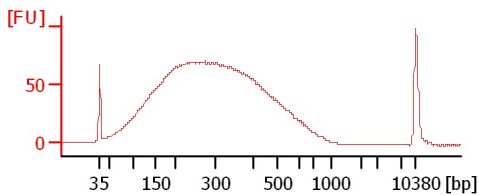
**FV2-B1 Soni-2 1:10**



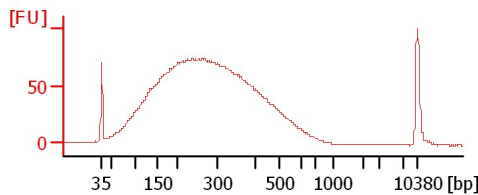
**FV2-B2 Soni-2 1:10**



**B73-B1 Soni-2 1:10**



**B73-B2 Soni-2 1:10**



Assay Class: High Sensitivity DNA Assay  
 Data Path: C:\...ents and Settings\Bioanalyzer\2012-11-30\2012-11-30\_003.xad

Created: 11/30/2012 12:45:56 PM  
 Modified: 11/30/2012 1:25:55 PM

**Electrophoresis File Run Summary (Chip Summary)**

Sample Name	Sample Comment	Rest. Digest	Status	Observation	Result Label	Result Color
NP2 Soni 1:5		<input type="checkbox"/>	✓			
EL1 Soni 1:5		<input type="checkbox"/>	✓			
BC-DW Soni 1:2		<input type="checkbox"/>	✓			
DEL11 Soni 1:5		<input type="checkbox"/>	✓			
FV2-B1 Soni-2 1:10		<input type="checkbox"/>	✓			
FV2-B2 Soni-2 1:10		<input type="checkbox"/>	✓			
B73-B1 Soni-2 1:10		<input type="checkbox"/>	✓			
B73-B2 Soni-2 1:10		<input type="checkbox"/>	✓			
sample 9		<input type="checkbox"/>				
sample 10		<input type="checkbox"/>				
sample 11		<input type="checkbox"/>				
Ladder		<input type="checkbox"/>	✓			

**Chip Lot #**

**Reagent Kit Lot #**

**Chip Comments :**

Assay Class: High Sensitivity DNA Assay  
Data Path: C:\...ents and Settings\Bioanalyzer\2012-11-30\2012-11-30\_003.xad

Created: 11/30/2012 12:45:56 PM  
Modified: 11/30/2012 1:25:55 PM

**Electrophoresis Assay Details**

**General Analysis Settings**

Number of Available Sample and Ladder Wells (Max.) : 12  
Minimum Visible Range [s] : 32  
Maximum Visible Range [s] : 138  
Start Analysis Time Range [s] : 33  
End Analysis Time Range [s] : 137.5  
Ladder Concentration [pg/ $\mu$ l] : 1950  
Uses Standard Area for Ladder Fragments  
Lower Marker Concentration [pg/ $\mu$ l] : 125  
Upper Marker Concentration [pg/ $\mu$ l] : 75  
Used Upper Marker for Quantitation  
Standard Curve Fit is Point to Point  
Show Data Aligned to Lower and Upper Marker

**Integrator Settings**

Integration Start Time [s] : 33.05  
Integration End Time [s] : 137  
Slope Threshold : 0.8  
Height Threshold [FU] : 5  
Area Threshold : 0.1  
Width Threshold [s] : 0.6  
Baseline Plateau [s] : 0.5

**Filter Settings**

Filter Width [s] : 0.5  
Polynomial Order : 4

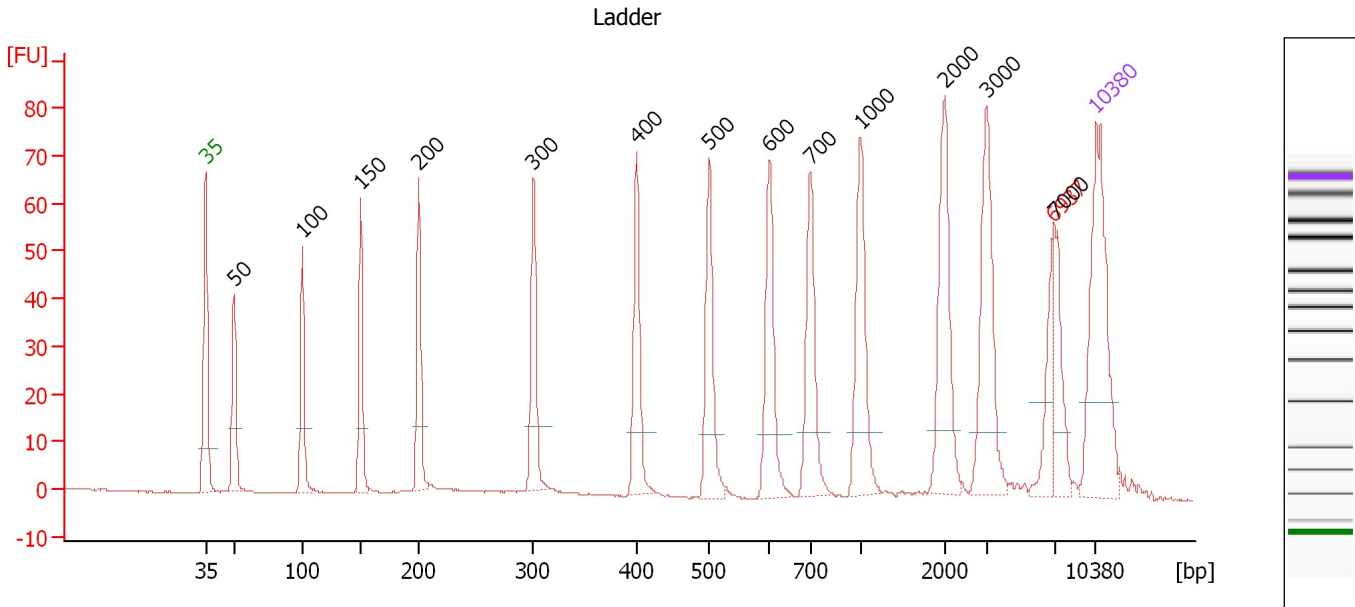
**Ladder**

Ladder Peak	Size	Area
1	35	160
2	50	210
3	100	208
4	150	221
5	200	242
6	300	270
7	400	305
8	500	306
9	600	336
10	700	321
11	1000	366
12	2000	413
13	3000	411
14	7000	400
15	10380	214

Assay Class: High Sensitivity DNA Assay  
 Data Path: C:\...ents and Settings\Bioanalyzer\2012-11-30\2012-11-30\_003.xad

Created: 11/30/2012 12:45:56 PM  
 Modified: 11/30/2012 1:25:55 PM

**Electropherogram Summary**



**Overall Results for Ladder**

Noise: 0.1

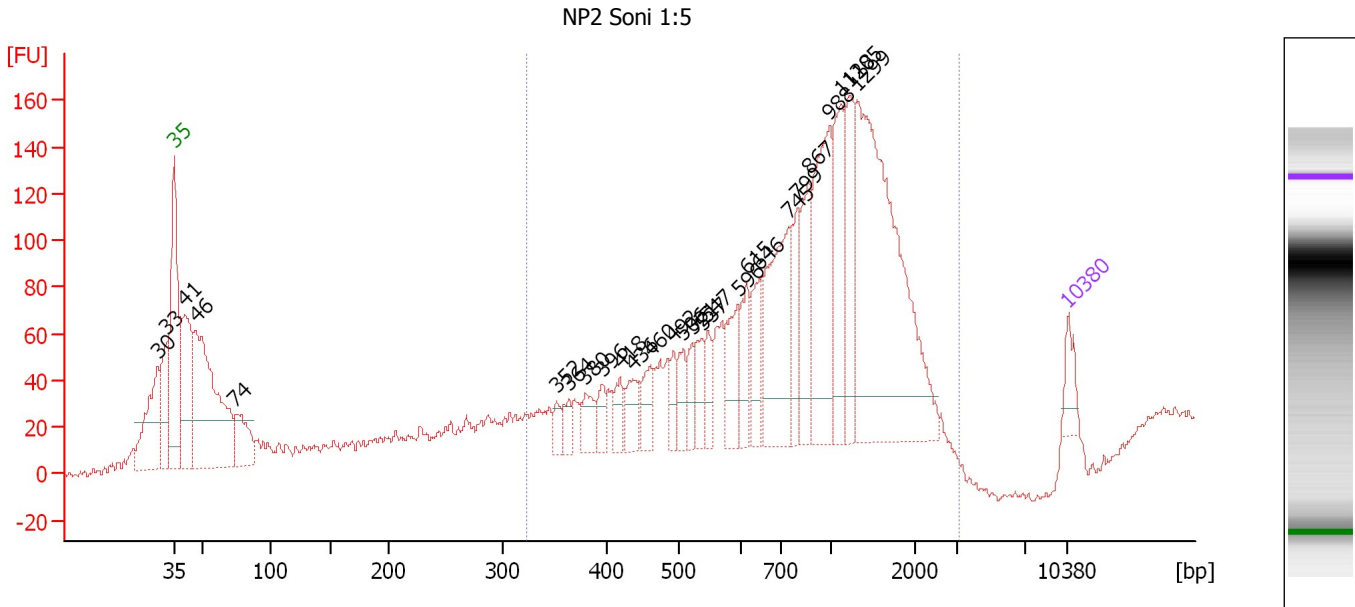
**Peak table for Ladder**

Peak	Size [bp]	Conc. [pg/μl]	Molarity [pmol/l]	Observations
1	35	125.00	5,411.3	Lower Marker
2	50	150.00	4,545.5	Ladder Peak
3	100	150.00	2,272.7	Ladder Peak
4	150	150.00	1,515.2	Ladder Peak
5	200	150.00	1,136.4	Ladder Peak
6	300	150.00	757.6	Ladder Peak
7	400	150.00	568.2	Ladder Peak
8	500	150.00	454.5	Ladder Peak
9	600	150.00	378.8	Ladder Peak
10	700	150.00	324.7	Ladder Peak
11	1,000	150.00	227.3	Ladder Peak
12	2,000	150.00	113.6	Ladder Peak
13	3,000	150.00	75.8	Ladder Peak
14	6,937	0.00	0.0	excluded peak
15	7,000	150.00	32.5	Ladder Peak
16	10,380	75.00	10.9	Upper Marker

Assay Class: High Sensitivity DNA Assay  
 Data Path: C:\...ents and Settings\Bioanalyzer\2012-11-30\2012-11-30\_003.xad

Created: 11/30/2012 12:45:56 PM  
 Modified: 11/30/2012 1:25:55 PM

**Electropherogram Summary Continued ...**



**Setpoint Deviations for sample 1 : NP2 Soni 1:5**

Height Threshold [FU] : 20

**Overall Results for sample 1 : NP2 Soni 1:5**

Number of peaks found: 27                      Corr. Area 1: 2,386.7  
 Noise: 2.3

**Peak table for sample 1 : NP2 Soni 1:5**

Peak	Size [bp]	Conc. [pg/μl]	Molarity [pmol/l]	Observations
1	30	0.00	0.0	
2	33	0.00	0.0	
3	35	125.00	5,411.3	Lower Marker
4	41	637.03	23,538.3	
5	46	1,147.64	37,466.6	
6	74	253.41	5,213.7	
7	352	58.91	253.7	
8	364	66.30	276.0	
9	380	109.81	437.9	
10	396	76.14	291.0	
11	418	85.42	309.4	
12	436	119.44	414.9	
13	460	108.87	358.3	
14	492	77.30	237.9	
15	506	101.64	304.5	
16	521	80.45	234.1	
17	537	122.54	345.4	
18	547	85.76	237.6	
19	596	174.12	442.6	
20	615	155.21	382.3	
21	646	176.55	414.2	
22	745	542.15	1,103.1	

Assay Class: High Sensitivity DNA Assay  
 Data Path: C:\...ents and Settings\Bioanalyzer\2012-11-30\2012-11-30\_003.xad

Created: 11/30/2012 12:45:56 PM  
 Modified: 11/30/2012 1:25:55 PM

### Electropherogram Summary Continued ...

#### ... Peak table for sample 1 : NP2 Soni 1:5

Peak	Size [bp]	Conc. [pg/μl]	Molarity [pmol/l]	Observations
23	799	166.26	315.3	
24	867	261.39	457.0	
25	988	504.23	772.9	
26	1,118	296.54	401.8	
27	1,205	288.06	362.1	
28	1,299	1,266.44	1,476.7	
29	10,380	75.00	10.9	Upper Marker

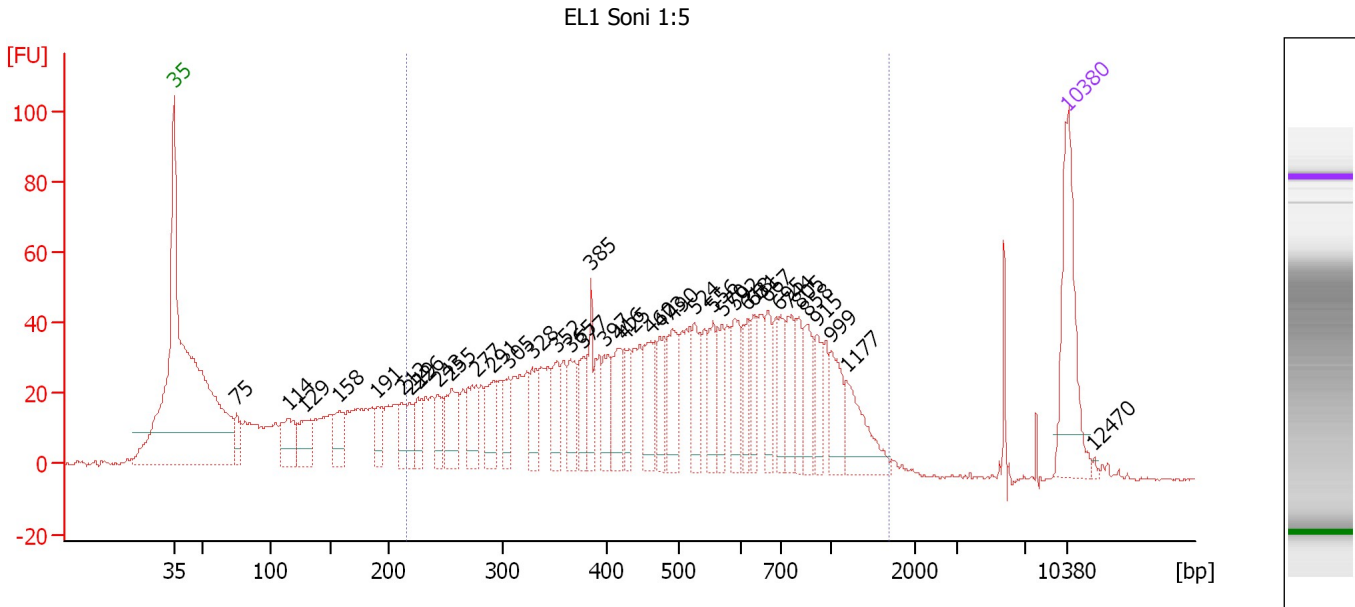
#### Region table for sample 1 : NP2 Soni 1:5

From [bp]	To [bp]	Average Size [bp]	Molarity [pmol/l]	Conc. [pg/μl]	Corr. Area	% of Total	Size distribution in CV [%]	Color
324	3,071	987	11,904.9	5,598.90	2,386.7	67	49.6	

Assay Class: High Sensitivity DNA Assay  
 Data Path: C:\...ents and Settings\Bioanalyzer\2012-11-30\2012-11-30\_003.xad

Created: 11/30/2012 12:45:56 PM  
 Modified: 11/30/2012 1:25:55 PM

**Electropherogram Summary Continued ...**



**Overall Results for sample 2 : EL1 Soni 1:5**

Number of peaks found: 39      Corr. Area 1: 1,576.0  
 Noise: 0.5

**Peak table for sample 2 : EL1 Soni 1:5**

Peak	Size [bp]	Conc. [pg/μl]	Molarity [pmol/l]	Observations
1	35	125.00	5,411.3	Lower Marker
2	75	23.68	477.4	
3	114	48.48	641.7	
4	129	42.37	496.8	
5	158	31.52	302.5	
6	191	22.93	182.3	
7	212	21.05	150.5	
8	219	20.88	144.6	
9	226	23.38	156.7	
10	243	26.77	166.8	
11	255	46.23	274.9	
12	277	38.56	211.1	
13	291	37.32	194.0	
14	305	25.37	126.0	
15	328	30.39	140.4	
16	352	28.38	122.2	
17	365	33.88	140.7	
18	377	32.15	129.1	
19	385	29.39	115.7	
20	397	33.30	126.9	
21	416	34.04	123.9	
22	425	24.87	88.7	
23	460	43.16	142.3	
24	473	32.09	102.7	
25	490	45.34	140.1	
26	524	36.86	106.5	

Assay Class: High Sensitivity DNA Assay  
 Data Path: C:\...ents and Settings\Bioanalyzer\2012-11-30\2012-11-30\_003.xad

Created: 11/30/2012 12:45:56 PM  
 Modified: 11/30/2012 1:25:55 PM

**Electropherogram Summary Continued ...**

**... Peak table for sample 2 : EL1 Soni 1:5**

Peak	Size [bp]	Conc. [pg/μl]	Molarity [pmol/l]	Observations
27	556	33.43	91.2	
28	570	24.97	66.3	
29	592	40.48	103.7	
30	618	24.94	61.2	
31	631	25.90	62.1	
32	667	30.13	68.4	
33	695	25.93	56.5	
34	744	32.98	67.1	
35	805	27.53	51.8	
36	858	30.40	53.7	
37	915	22.89	37.9	
38	999	32.29	49.0	
39	1,177	43.83	56.4	
40	10,380	75.00	10.9	Upper Marker
41	12,470	0.00	0.0	

**Region table for sample 2 : EL1 Soni 1:5**

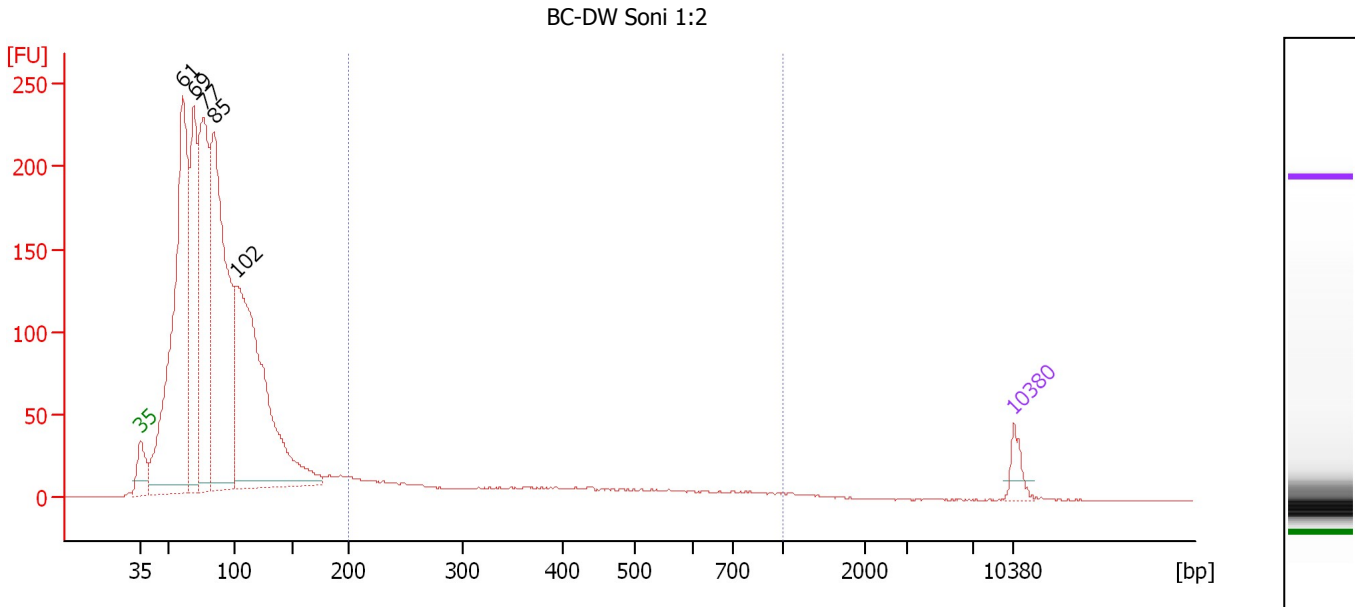
From [bp]	To [bp]	Average Size [bp]	Molarity [pmol/l]	Conc. [pg/μl]	Corr. Area	% of Total	Size distribution in CV [%]	Color
216	1,678	552	5,418.7	1,489.92	1,576.0	78	48.5	



Assay Class: High Sensitivity DNA Assay  
 Data Path: C:\...ents and Settings\Bioanalyzer\2012-11-30\2012-11-30\_003.xad

Created: 11/30/2012 12:45:56 PM  
 Modified: 11/30/2012 1:25:55 PM

**Electropherogram Summary Continued ...**



**Overall Results for sample 3 : BC-DW Soni 1:2**

Number of peaks found: 5                      Corr. Area 1: 339.9  
 Noise: 0.2

**Peak table for sample 3 : BC-DW Soni 1:2**

Peak	Size [bp]	Conc. [pg/μl]	Molarity [pmol/l]	Observations
1	35	125.00	5,411.3	Lower Marker
2	61	3,452.74	85,567.3	
3	69	1,439.25	31,378.4	
4	77	2,043.54	40,389.4	
5	85	2,984.78	53,443.1	
6	102	3,096.39	46,196.0	
7	10,380	75.00	10.9	Upper Marker

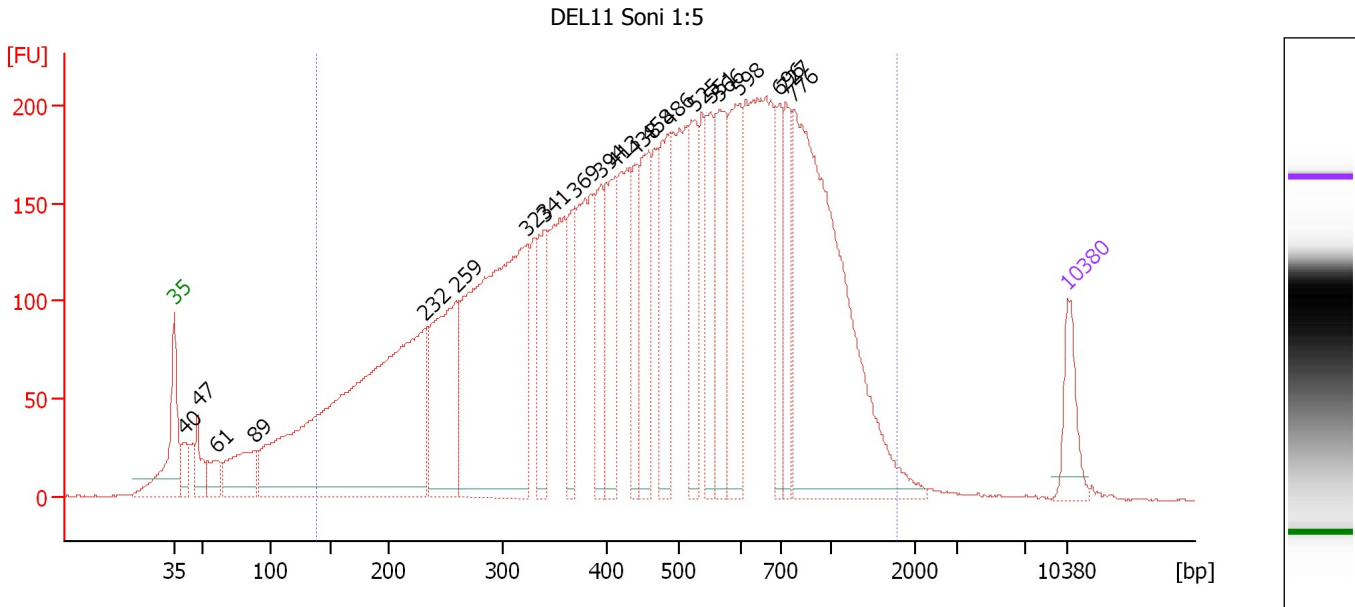
**Region table for sample 3 : BC-DW Soni 1:2**

From [bp]	To [bp]	Average Size [bp]	Molarity [pmol/l]	Conc. [pg/μl]	Corr. Area	% of Total	Size distribution in CV [%]	Color
200	1,000	406	4,405.3	929.56	339.9	8	43.9	Blue

Assay Class: High Sensitivity DNA Assay  
 Data Path: C:\...ents and Settings\Bioanalyzer\2012-11-30\2012-11-30\_003.xad

Created: 11/30/2012 12:45:56 PM  
 Modified: 11/30/2012 1:25:55 PM

**Electropherogram Summary Continued ...**



**Overall Results for sample 4 : DEL11 Soni 1:5**

Number of peaks found: 21                      Corr. Area 1: 7,927.4  
 Noise: 0.3

**Peak table for sample 4 : DEL11 Soni 1:5**

Peak	Size [bp]	Conc. [pg/μl]	Molarity [pmol/l]	Observations
1	35	125.00	5,411.3	Lower Marker
2	40	70.48	2,650.0	
3	47	84.20	2,687.6	
4	61	66.72	1,665.2	
5	89	182.15	3,112.3	
6	232	1,439.14	9,389.8	
7	259	429.31	2,512.8	
8	323	1,039.79	4,882.6	
9	341	184.45	819.7	
10	369	138.54	569.0	
11	394	160.94	618.9	
12	413	221.80	814.6	
13	438	144.80	500.4	
14	458	220.22	728.7	
15	486	214.79	669.2	
16	525	193.31	557.7	
17	551	158.03	434.3	
18	566	218.04	583.9	
19	598	250.35	634.7	
20	696	131.57	286.2	
21	727	148.82	310.3	
22	776	957.33	1,869.6	
23	10,380	75.00	10.9	Upper Marker

Assay Class: High Sensitivity DNA Assay  
Data Path: C:\...ents and Settings\Bioanalyzer\2012-11-30\2012-11-30\_003.xad

Created: 11/30/2012 12:45:56 PM  
Modified: 11/30/2012 1:25:55 PM

**Electropherogram Summary Continued ...**

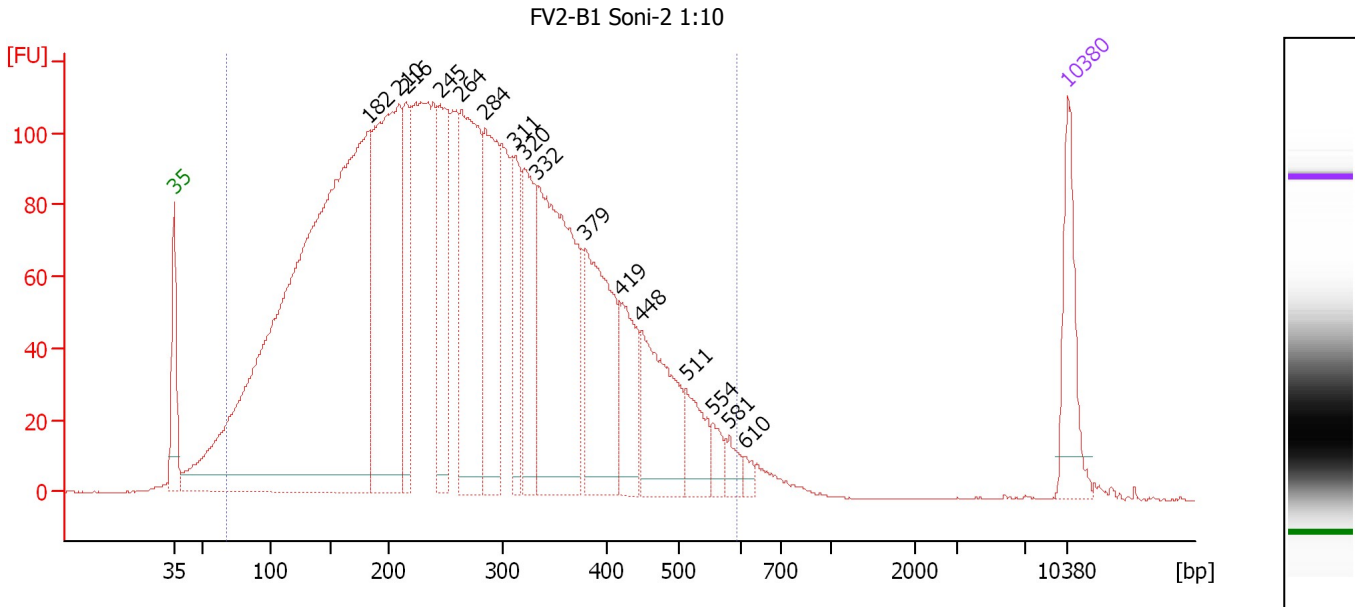
... Region table for sample 4 : DEL11 Soni 1:5

From [bp]	To [bp]	Average Size [bp]	Molarity [pmol/l]	Conc. [pg/μl]	Corr. Area	% of Total	Size distribution in CV [%]	Color
139	1,784	523	34,759.2	8,261.49	7,927.4	92	52.3	■

Assay Class: High Sensitivity DNA Assay  
 Data Path: C:\...ents and Settings\Bioanalyzer\2012-11-30\2012-11-30\_003.xad

Created: 11/30/2012 12:45:56 PM  
 Modified: 11/30/2012 1:25:55 PM

**Electropherogram Summary Continued ...**



**Overall Results for sample 5 : FV2-B1 Soni-2 1:10**

Number of peaks found: 16                      Corr. Area 1: 4,550.2  
 Noise: 0.2

**Peak table for sample 5 : FV2-B1 Soni-2 1:10**

Peak	Size [bp]	Conc. [pg/μl]	Molarity [pmol/l]	Observations
1	35	125.00	5,411.3	Lower Marker
2	182	1,687.86	14,013.6	
3	210	538.80	3,893.1	
4	216	134.27	942.3	
5	245	190.24	1,176.9	
6	264	351.44	2,020.5	
7	284	247.23	1,317.8	
8	311	111.50	542.7	
9	320	143.46	679.4	
10	332	426.94	1,948.0	
11	379	227.65	909.2	
12	419	99.05	358.1	
13	448	159.05	538.3	
14	511	58.97	174.9	
15	554	23.80	65.1	
16	581	19.15	49.9	
17	610	8.99	22.3	
18	10,380	75.00	10.9	Upper Marker

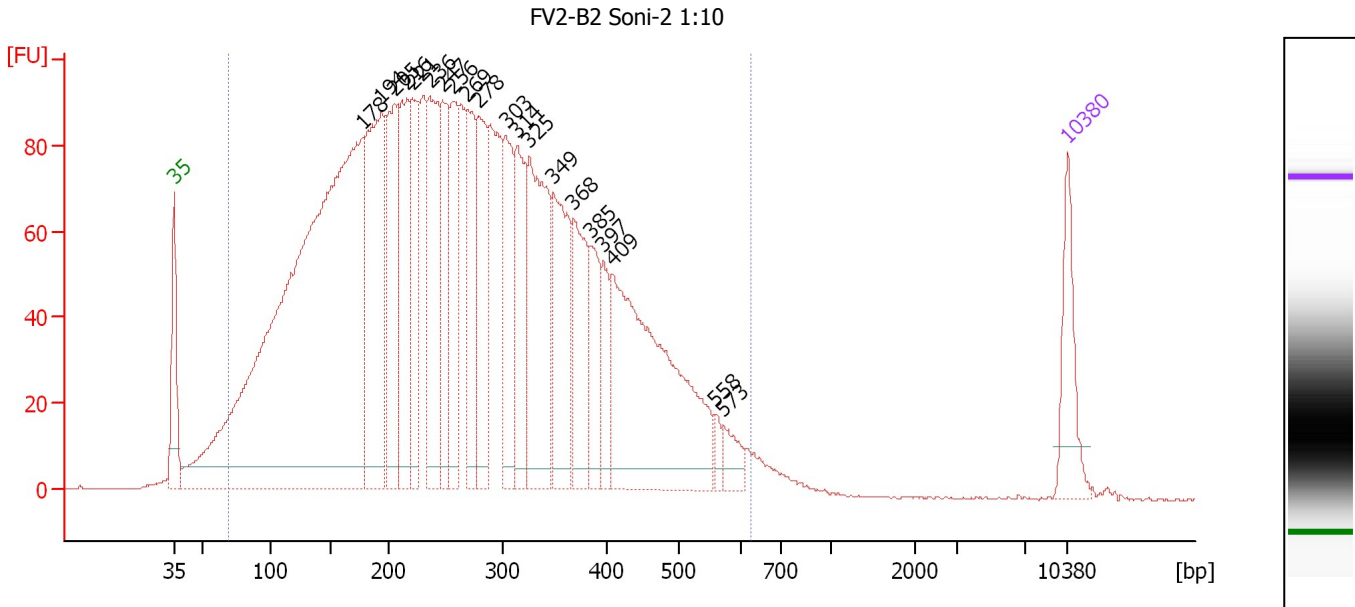
**Region table for sample 5 : FV2-B1 Soni-2 1:10**

From [bp]	To [bp]	Average Size [bp]	Molarity [pmol/l]	Conc. [pg/μl]	Corr. Area	% of Total	Size distribution in CV [%]	Color
67	594	268	41,122.0	5,359.31	4,550.2	97	41.5	Blue

Assay Class: High Sensitivity DNA Assay  
 Data Path: C:\...ents and Settings\Bioanalyzer\2012-11-30\2012-11-30\_003.xad

Created: 11/30/2012 12:45:56 PM  
 Modified: 11/30/2012 1:25:55 PM

**Electropherogram Summary Continued ...**



**Overall Results for sample 6 : FV2-B2 Soni-2 1:10**

Number of peaks found: 20                      Corr. Area 1: 3,877.3  
 Noise: 0.1

**Peak table for sample 6 : FV2-B2 Soni-2 1:10**

Peak	Size [bp]	Conc. [pg/µl]	Molarity [pmol/l]	Observations
1	35	125.00	5,411.3	Lower Marker
2	178	1,922.58	16,329.8	
3	194	439.78	3,428.2	
4	205	265.56	1,960.2	
5	216	225.47	1,579.8	
6	221	186.26	1,274.2	
7	236	262.54	1,684.8	
8	247	161.41	989.8	
9	256	169.06	1,000.7	
10	269	169.95	957.1	
11	278	183.59	1,000.9	
12	303	171.22	856.8	
13	314	160.76	776.1	
14	325	321.02	1,494.4	
15	349	210.08	912.6	
16	368	159.54	656.9	
17	385	96.38	379.4	
18	397	68.99	263.2	
19	409	496.47	1,838.7	
20	558	16.09	43.7	
21	573	32.65	86.4	
22	10,380	75.00	10.9	Upper Marker

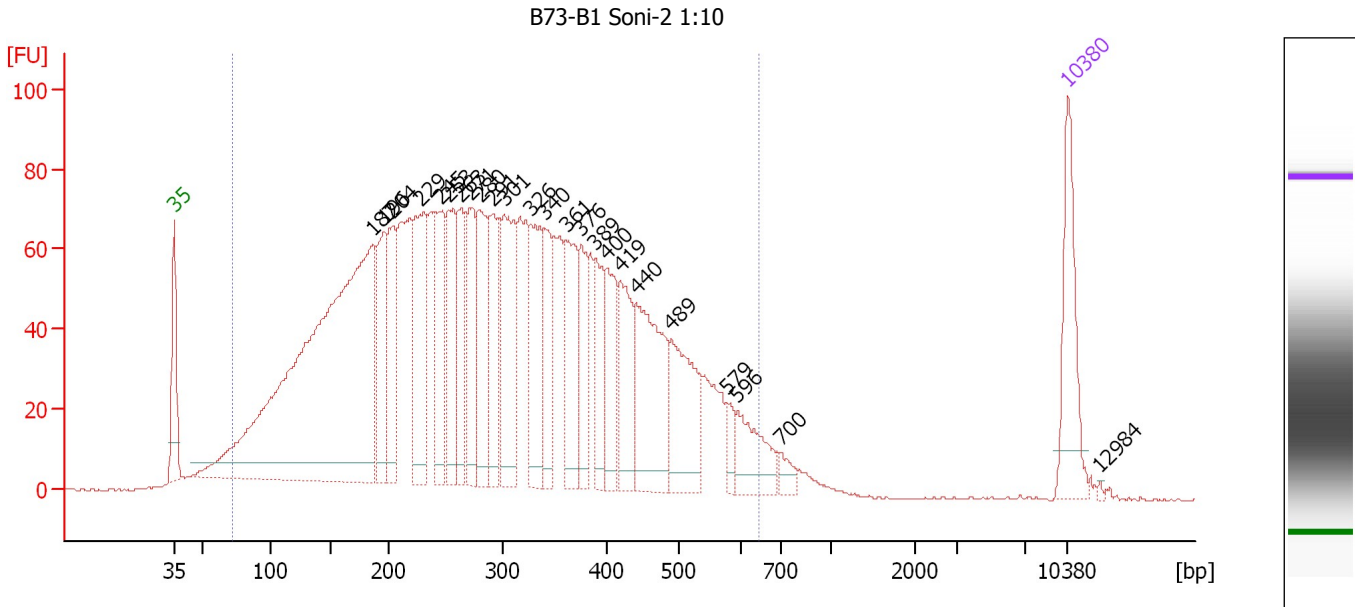
**Region table for sample 6 : FV2-B2 Soni-2 1:10**

From [bp]	To [bp]	Average Size [bp]	Molarity [pmol/l]	Conc. [pg/µl]	Corr. Area	% of Total	Size distribution in CV [%]	Color
69	625	273	49,867.5	6,583.51	3,877.3	97	42.1	Blue

Assay Class: High Sensitivity DNA Assay  
 Data Path: C:\...ents and Settings\Bioanalyzer\2012-11-30\2012-11-30\_003.xad

Created: 11/30/2012 12:45:56 PM  
 Modified: 11/30/2012 1:25:55 PM

**Electropherogram Summary Continued ...**



**Overall Results for sample 7 : B73-B1 Soni-2 1:10**

Number of peaks found: 24      Corr. Area 1: 3,141.2  
 Noise: 0.1

**Peak table for sample 7 : B73-B1 Soni-2 1:10**

Peak	Size [bp]	Conc. [pg/μl]	Molarity [pmol/l]	Observations
1	35	125.00	5,411.3	Lower Marker
2	187	939.29	7,606.7	
3	196	117.90	909.3	
4	204	105.78	786.4	
5	229	160.33	1,062.8	
6	245	115.21	712.7	
7	253	113.44	679.8	
8	263	91.38	526.7	
9	271	102.36	571.7	
10	280	117.94	638.8	
11	291	95.92	499.8	
12	301	150.51	757.8	
13	326	116.59	541.6	
14	340	75.79	338.1	
15	361	96.37	404.7	
16	376	64.95	262.1	
17	389	63.23	246.2	
18	400	81.38	308.6	
19	419	87.52	316.8	
20	440	163.20	561.6	
21	489	114.39	354.1	
22	579	17.11	44.8	
23	596	58.96	149.9	
24	700	13.60	29.4	
25	10,380	75.00	10.9	Upper Marker
26	12,984	0.00	0.0	

Assay Class: High Sensitivity DNA Assay  
Data Path: C:\...ents and Settings\Bioanalyzer\2012-11-30\2012-11-30\_003.xad

Created: 11/30/2012 12:45:56 PM  
Modified: 11/30/2012 1:25:55 PM

**Electropherogram Summary Continued ...**

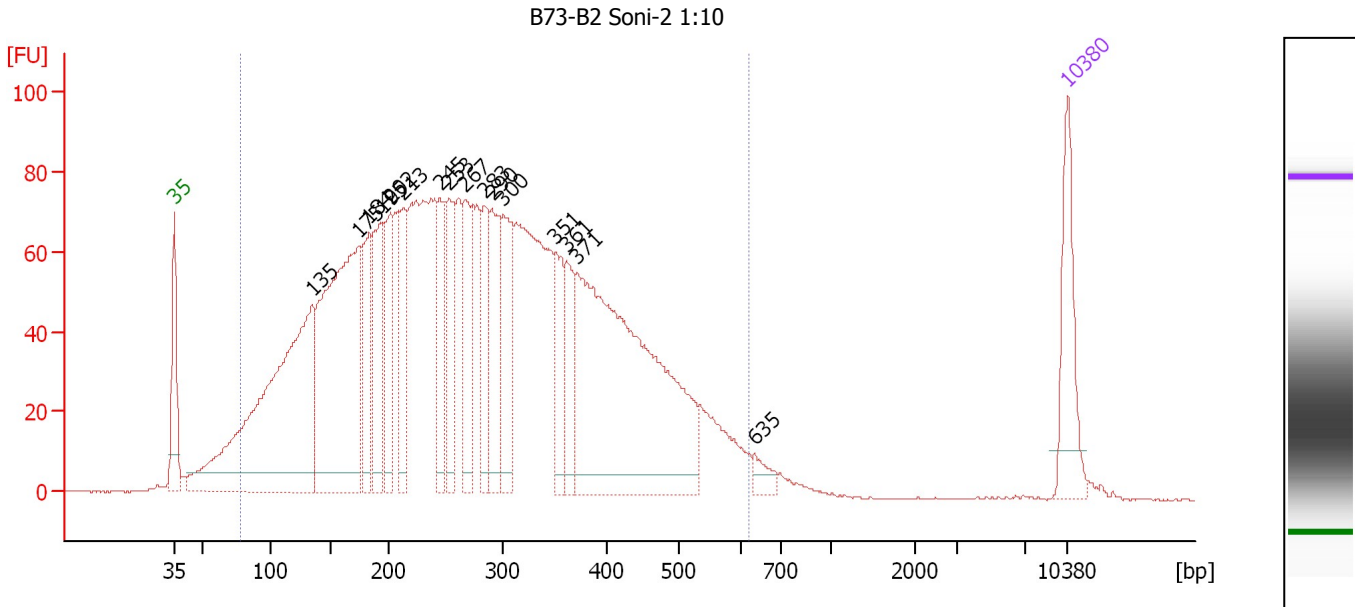
... Region table for sample 7 : B73-B1 Soni-2 1:10

From [bp]	To [bp]	Average Size [bp]	Molarity [pmol/l]	Conc. [pg/μl]	Corr. Area	% of Total	Size distribution in CV [%]	Color
72	646	301	27,486.4	3,995.75	3,141.2	96	41.2	■

Assay Class: High Sensitivity DNA Assay  
 Data Path: C:\...ents and Settings\Bioanalyzer\2012-11-30\2012-11-30\_003.xad

Created: 11/30/2012 12:45:56 PM  
 Modified: 11/30/2012 1:25:55 PM

**Electropherogram Summary Continued ...**



**Overall Results for sample 8 : B73-B2 Soni-2 1:10**

Number of peaks found: 16                      Corr. Area 1: 3,105.2  
 Noise: 0.2

**Peak table for sample 8 : B73-B2 Soni-2 1:10**

Peak	Size [bp]	Conc. [pg/μl]	Molarity [pmol/l]	Observations
1	35	125.00	5,411.3	Lower Marker
2	135	648.61	7,297.4	
3	175	510.79	4,429.0	
4	184	122.60	1,011.7	
5	195	138.87	1,081.3	
6	202	117.53	879.6	
7	213	101.69	723.2	
8	245	104.03	643.9	
9	253	94.61	565.9	
10	267	118.65	673.2	
11	283	85.64	457.7	
12	290	108.21	564.7	
13	300	115.82	584.1	
14	351	78.98	341.3	
15	361	69.88	293.1	
16	371	590.19	2,408.8	
17	635	17.89	42.7	
18	10,380	75.00	10.9	Upper Marker

**Region table for sample 8 : B73-B2 Soni-2 1:10**

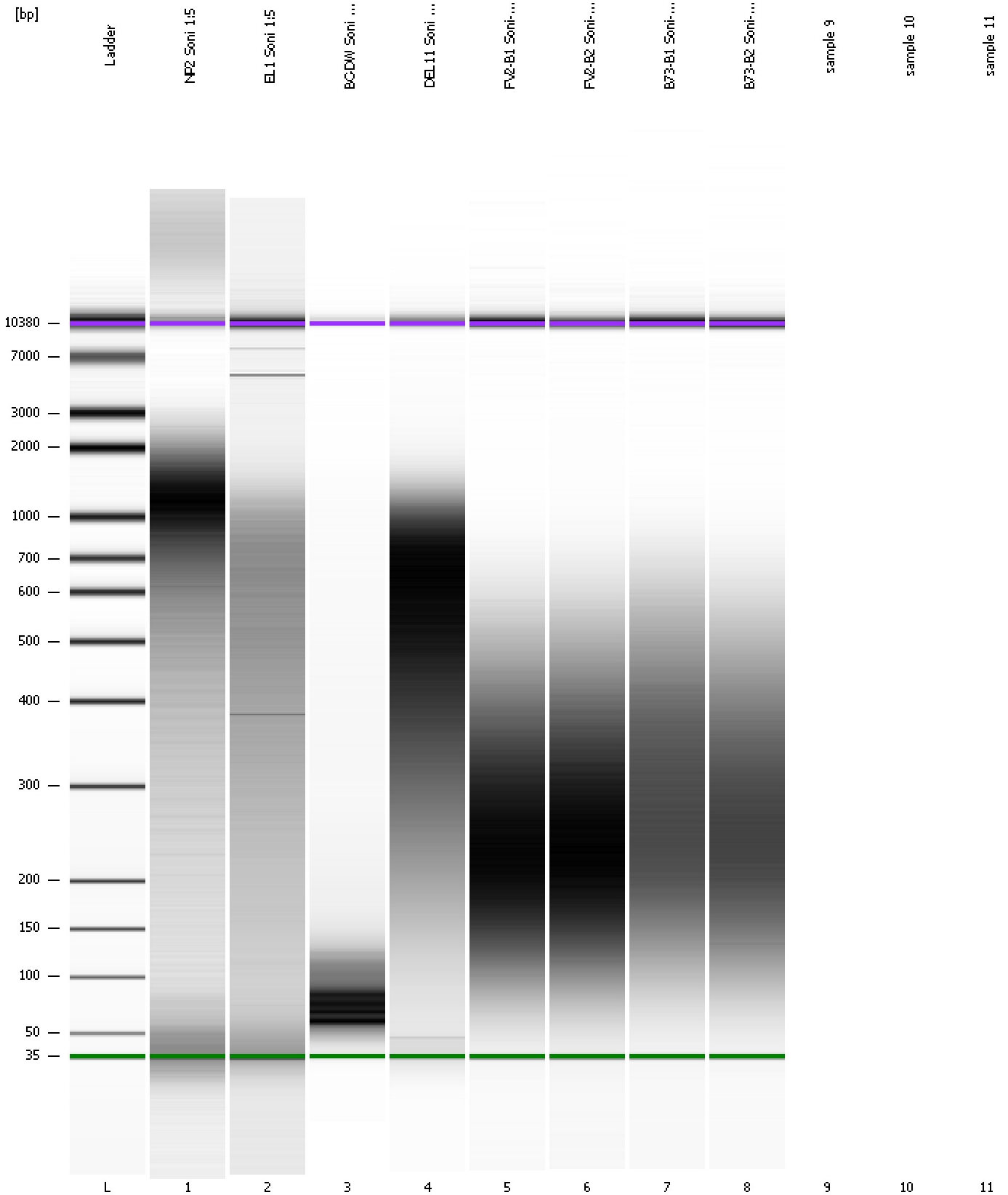
From [bp]	To [bp]	Average Size [bp]	Molarity [pmol/l]	Conc. [pg/μl]	Corr. Area	% of Total	Size distribution in CV [%]	Color
77	623	284	29,216.1	4,080.84	3,105.2	96	40.9	Blue



Assay Class: High Sensitivity DNA Assay  
Data Path: C:\...ents and Settings\Bioanalyzer\2012-11-30\2012-11-30\_003.xad

Created: 11/30/2012 12:45:56 PM  
Modified: 11/30/2012 1:25:55 PM

**Gel Image**



Assay Class: High Sensitivity DNA Assay  
Data Path: C:\...ents and Settings\Bioanalyzer\2012-11-30\2012-11-30\_003.xad

Created: 11/30/2012 12:45:56 PM  
Modified: 11/30/2012 1:25:55 PM

**Invalid Samples**

Sample 9 has not been run, no results available.

Sample 10 has not been run, no results available.

Sample 11 has not been run, no results available.

Assay Class: High Sensitivity DNA Assay  
 Data Path: C:\...ents and Settings\Bioanalyzer\2012-11-30\2012-11-30\_003.xad

Created: 11/30/2012 12:45:56 PM  
 Modified: 11/30/2012 1:25:55 PM

**Run Logbook**

Description	Number	Source	Category	Sub Category	Time	Time Zone	User	Host
Run ended on port 1 (Number of wells acquired: 9)		Instrument	Run		11/30/2012 1:18:40 PM	(GMT --08:00) Pacific Standard Time	UC Davis	D8XSMGH1
Run started on port 1 (File: C:\Documents and Settings\Bioanalyzer\2012-11-30\2012-11-30_003.xad)		Instrument	Run		11/30/2012 12:46:02 PM	(GMT --08:00) Pacific Standard Time	UC Davis	D8XSMGH1
Product Number : G2938B		Instrument	Run		11/30/2012 12:46:02 PM	(GMT --08:00) Pacific Standard Time	UC Davis	D8XSMGH1
Name :		Instrument	Run		11/30/2012 12:46:02 PM	(GMT --08:00) Pacific Standard Time	UC Davis	D8XSMGH1
Vendor : Agilent Technologies		Instrument	Run		11/30/2012 12:46:02 PM	(GMT --08:00) Pacific Standard Time	UC Davis	D8XSMGH1
Serial# : DE13701086		Instrument	Run		11/30/2012 12:46:02 PM	(GMT --08:00) Pacific Standard Time	UC Davis	D8XSMGH1
Firmware : C.01.069		Instrument	Run		11/30/2012 12:46:02 PM	(GMT --08:00) Pacific Standard Time	UC Davis	D8XSMGH1
Cartridge : Electrode		Instrument	Run		11/30/2012 12:46:02 PM	(GMT --08:00) Pacific Standard Time	UC Davis	D8XSMGH1