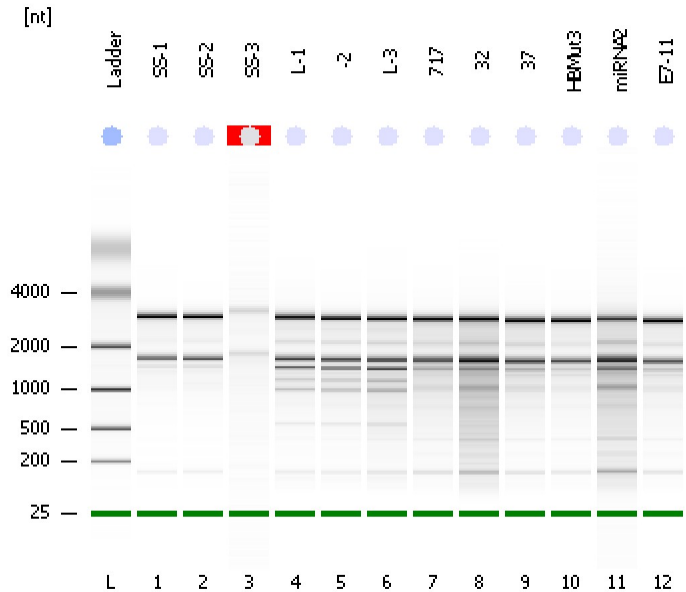


Assay Class: Plant RNA Nano
Data Path: C:\...ents and Settings\Bioanalyzer\2012-11-30\2012-11-30_005.xad

Created: 11/30/2012 4:24:29 PM
Modified: 11/30/2012 4:48:37 PM

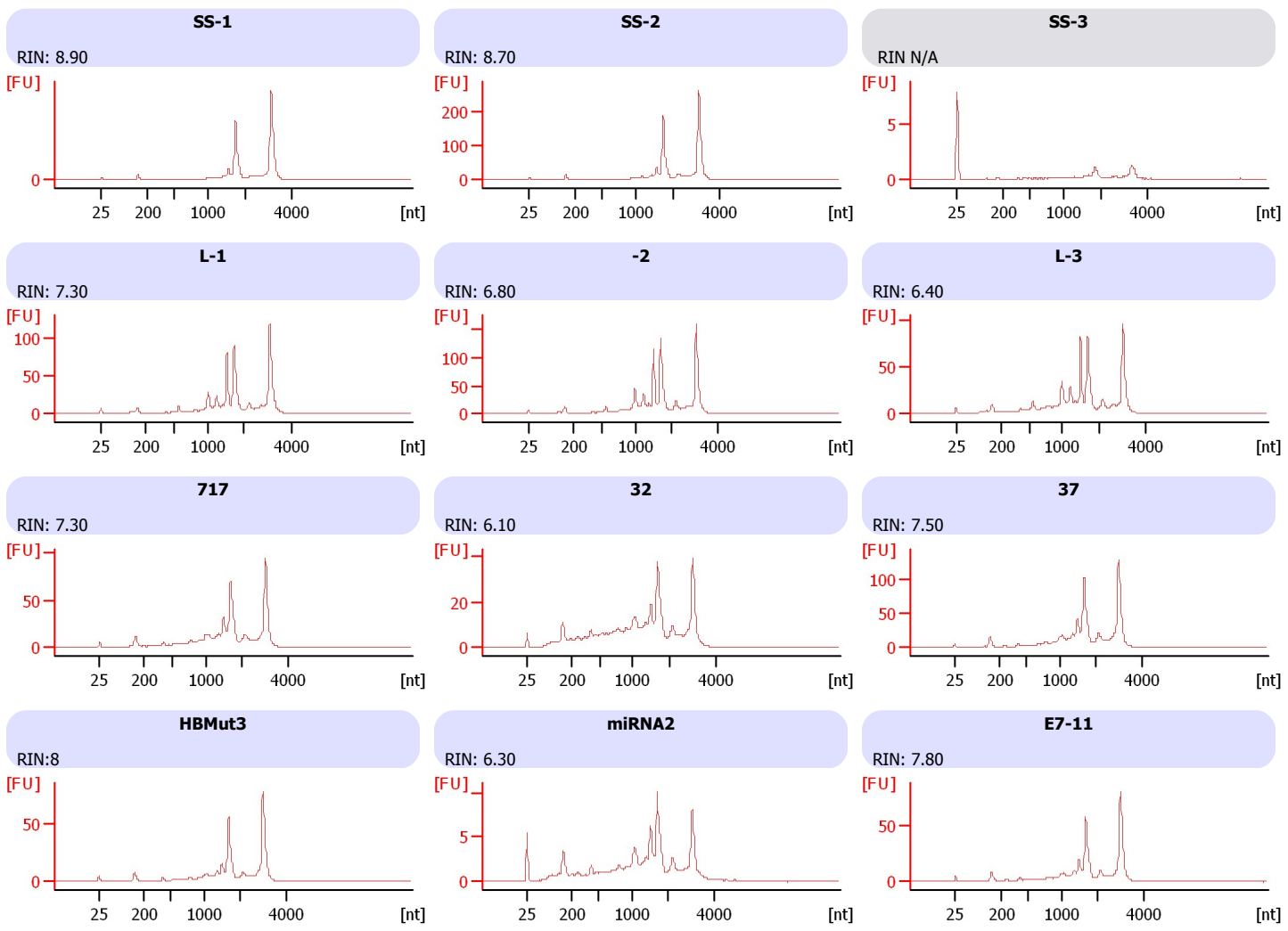
Electrophoresis File Run Summary



Instrument Information:
 Instrument Name: DE13701086 Firmware: C.01.069
 Serial#: DE13701086 Type: G2938B

Assay Information:
 Assay Origin Path: C:\Program Files\Agilent\2100 bioanalyzer\2100 expert\assays\RNA\Plant RNA Nano.xsy
 Assay Class: Plant RNA Nano
 Version: 1.3
 Assay Comments: Total RNA Analysis ng sensitivity (Plant)
 © Copyright 2003 - 2009 Agilent Technologies, Inc.

Chip Information:
 Chip Lot #:
 Reagent Kit Lot #:
 Chip Comments:



Assay Class: Plant RNA Nano
 Data Path: C:\...ents and Settings\Bioanalyzer\2012-11-30\2012-11-30_005.xad

Created: 11/30/2012 4:24:29 PM
 Modified: 11/30/2012 4:48:37 PM

Electrophoresis File Run Summary (Chip Summary)

Sample Name	Sample Comment	Status	Result Label	Result Color
SS-1		✓	RIN: 8.90	
SS-2		✓	RIN: 8.70	
SS-3		✓	RIN N/A	
L-1		✓	RIN: 7.30	
-2		✓	RIN: 6.80	
L-3		✓	RIN: 6.40	
717		✓	RIN: 7.30	
32		✓	RIN: 6.10	
37		✓	RIN: 7.50	
HBMut3		✓	RIN:8	
miRNA2		✓	RIN: 6.30	
E7-11		✓	RIN: 7.80	
Ladder		✓	All Other Samples	

Chip Lot #

Reagent Kit Lot #

Chip Comments :

Assay Class: Plant RNA Nano
Data Path: C:\...ents and Settings\Bioanalyzer\2012-11-30\2012-11-30_005.xad

Created: 11/30/2012 4:24:29 PM
Modified: 11/30/2012 4:48:37 PM

Electrophoresis Assay Details

General Analysis Settings

Number of Available Sample and Ladder Wells (Max.) : 13
Minimum Visible Range [s] : 17
Maximum Visible Range [s] : 70
Start Analysis Time Range [s] : 19
End Analysis Time Range [s] : 69
Ladder Concentration [ng/μl] : 150
Lower Marker Concentration [ng/μl] : 0
Upper Marker Concentration [ng/μl] : 0
Used Lower Marker for Quantitation
Standard Curve Fit is Logarithmic
Show Data Aligned to Lower Marker

Integrator Settings

Integration Start Time [s] : 19
Integration End Time [s] : 69
Slope Threshold : 0.6
Height Threshold [FU] : 0.2
Area Threshold : 0.1
Width Threshold [s] : 0.2
Baseline Plateau [s] : 6

Filter Settings

Filter Width [s] : 0.5
Polynomial Order : 4

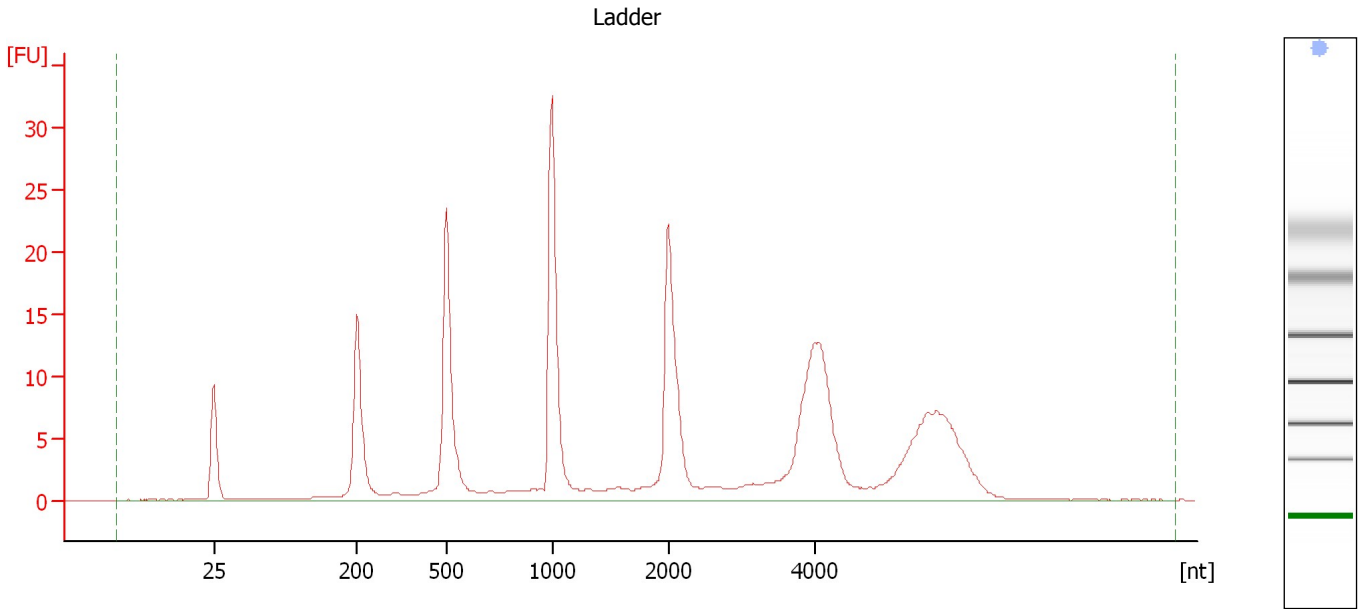
Ladder

Ladder Peak	Size
1	25
2	200
3	500
4	1000
5	2000
6	4000

Assay Class: Plant RNA Nano
Data Path: C:\...ents and Settings\Bioanalyzer\2012-11-30\2012-11-30_005.xad

Created: 11/30/2012 4:24:29 PM
Modified: 11/30/2012 4:48:37 PM

Electropherogram Summary



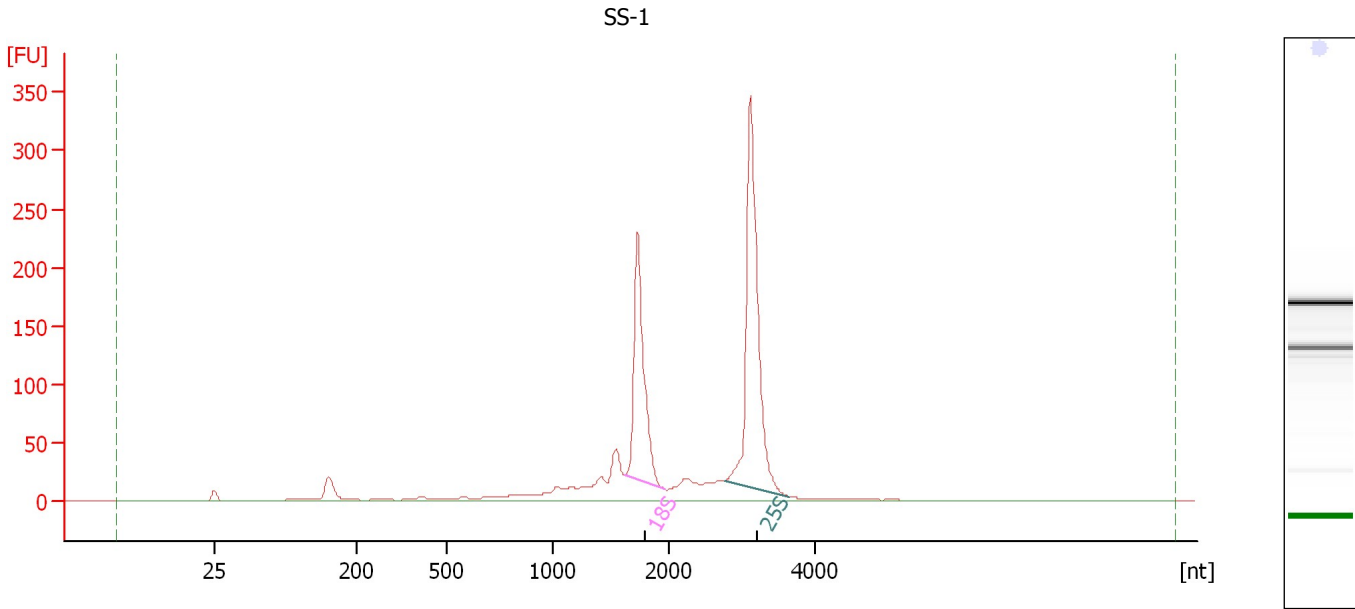
Overall Results for Ladder

RNA Area:	234.9	Result Flagging Color:	
RNA Concentration:	150 ng/ μ l	Result Flagging Label:	All Other Samples

Assay Class: Plant RNA Nano
Data Path: C:\...ents and Settings\Bioanalyzer\2012-11-30\2012-11-30_005.xad

Created: 11/30/2012 4:24:29 PM
Modified: 11/30/2012 4:48:37 PM

Electropherogram Summary Continued ...



Overall Results for sample 1 : SS-1

RNA Area:	1,183.4	RNA Integrity Number (RIN):	8.9 (B.02.08)
RNA Concentration:	756 ng/μl	Result Flagging Color:	
rRNA Ratio [25s / 18s]:	1.6	Result Flagging Label:	RIN: 8.90

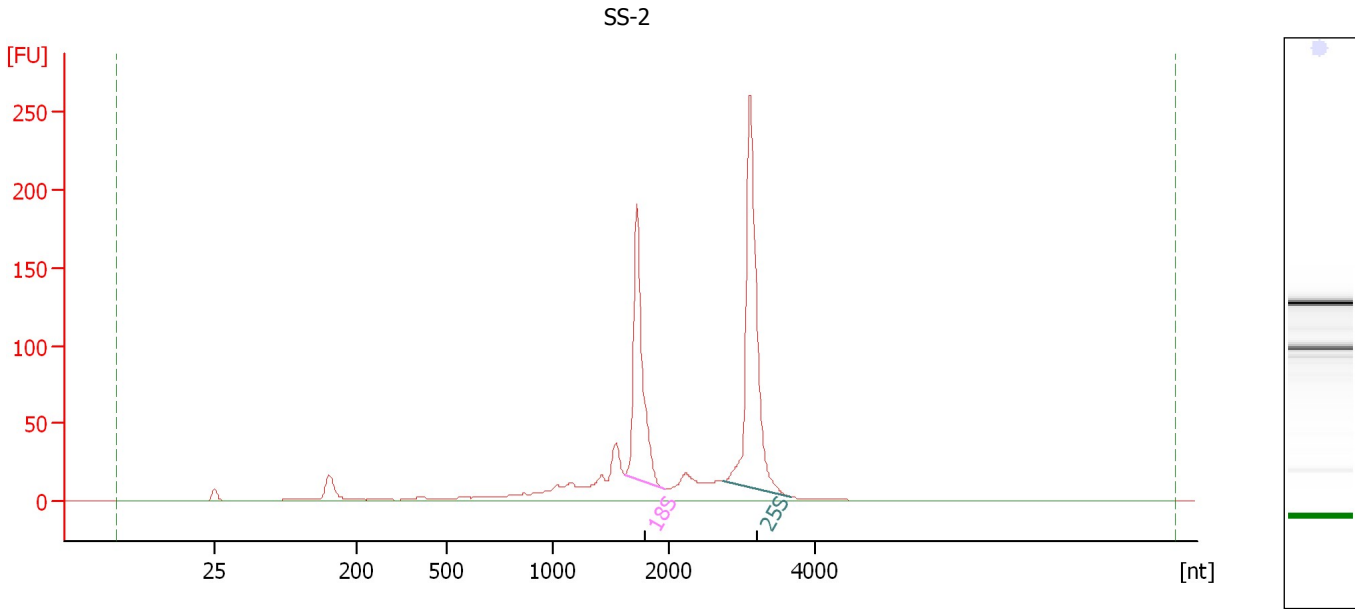
Fragment table for sample 1 : SS-1

Name	Start Size [nt]	End Size [nt]	Area	% of total Area
18S	1,623	1,972	258.5	21.8
25S	2,768	3,637	412.9	34.9

Assay Class: Plant RNA Nano
Data Path: C:\...ents and Settings\Bioanalyzer\2012-11-30\2012-11-30_005.xad

Created: 11/30/2012 4:24:29 PM
Modified: 11/30/2012 4:48:37 PM

Electropherogram Summary Continued ...



Overall Results for sample 2 : SS-2

RNA Area: 899.6 RNA Integrity Number (RIN): 8.7 (B.02.08)
RNA Concentration: 575 ng/μl Result Flagging Color:
rRNA Ratio [25s / 18s]: 1.5 Result Flagging Label: RIN: 8.70

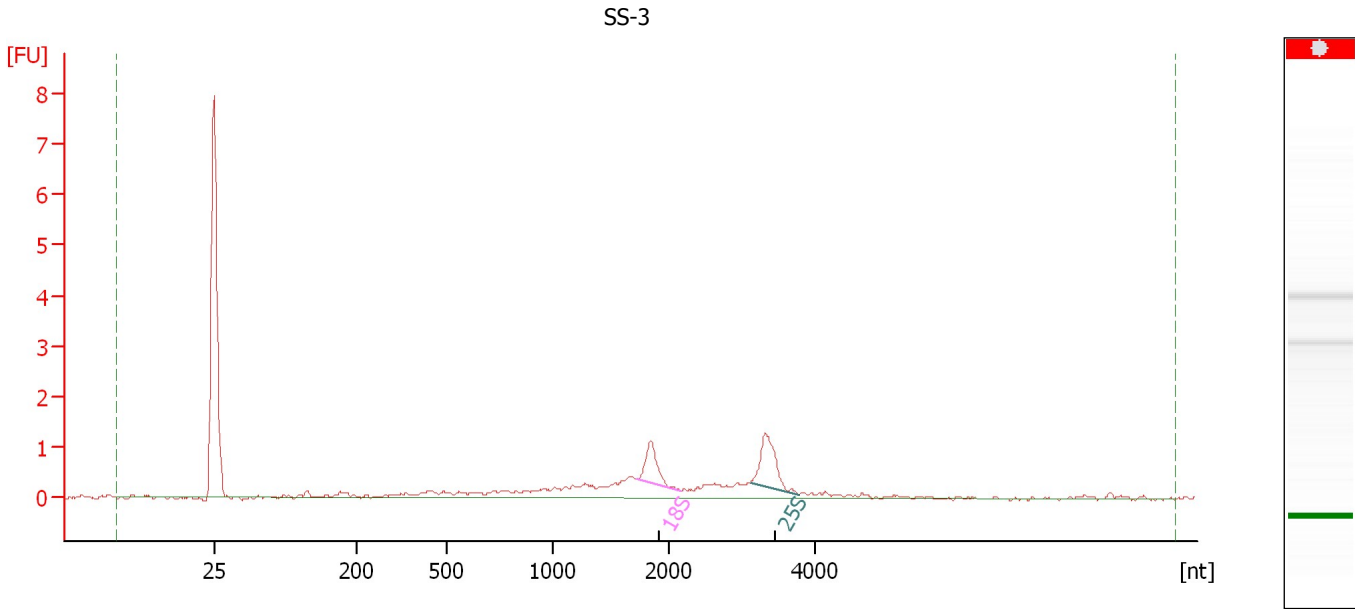
Fragment table for sample 2 : SS-2

Name	Start Size [nt]	End Size [nt]	Area	% of total Area
18S	1,623	1,963	194.7	21.6
25S	2,753	3,652	292.3	32.5

Assay Class: Plant RNA Nano
Data Path: C:\...ents and Settings\Bioanalyzer\2012-11-30\2012-11-30_005.xad

Created: 11/30/2012 4:24:29 PM
Modified: 11/30/2012 4:48:37 PM

Electropherogram Summary Continued ...



Overall Results for sample 3 : SS-3

RNA Area: 14.2 RNA Integrity Number (RIN): N/A (B.02.08)
RNA Concentration: 9 ng/μl Result Flagging Color:
rRNA Ratio [25s / 18s]: 1.4 Result Flagging Label: RIN N/A

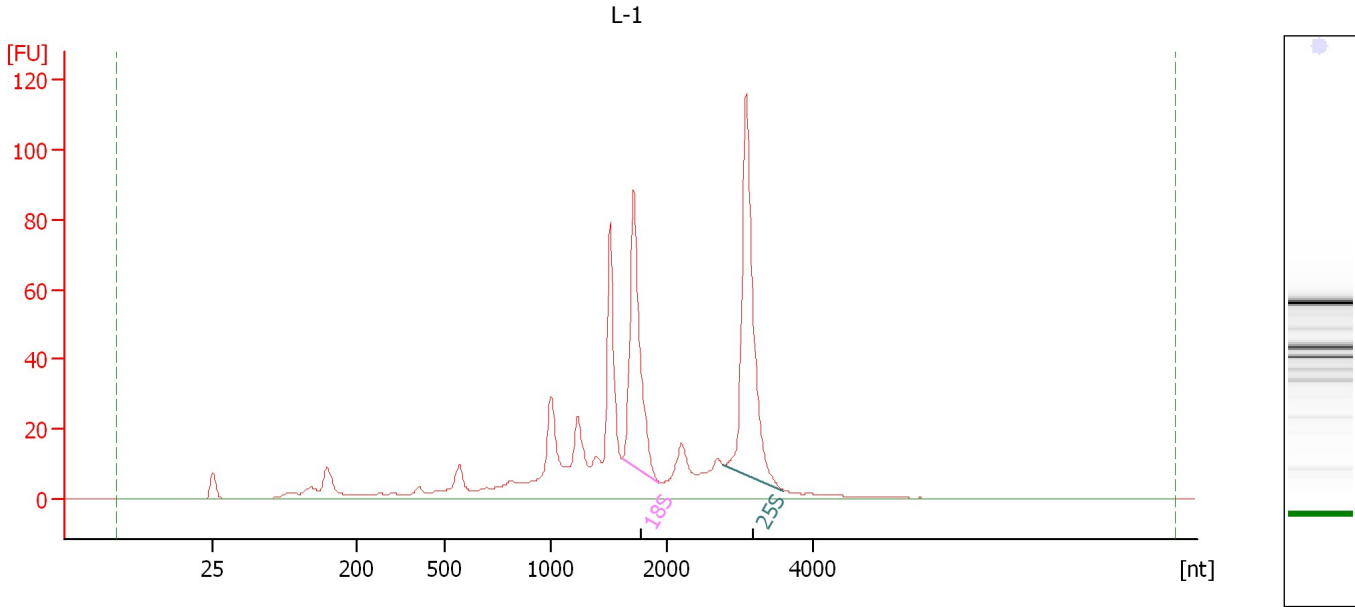
Fragment table for sample 3 : SS-3

Name	Start Size [nt]	End Size [nt]	Area	% of total Area
18S	1,724	2,159	1.2	8.6
25S	3,115	3,768	1.7	11.8

Assay Class: Plant RNA Nano
Data Path: C:\...ents and Settings\Bioanalyzer\2012-11-30\2012-11-30_005.xad

Created: 11/30/2012 4:24:29 PM
Modified: 11/30/2012 4:48:37 PM

Electropherogram Summary Continued ...



Overall Results for sample 4 : L-1

RNA Area:	644.3	RNA Integrity Number (RIN):	7.3 (B.02.08)
RNA Concentration:	412 ng/μl	Result Flagging Color:	
rRNA Ratio [25s / 18s]:	1.4	Result Flagging Label:	RIN: 7.30

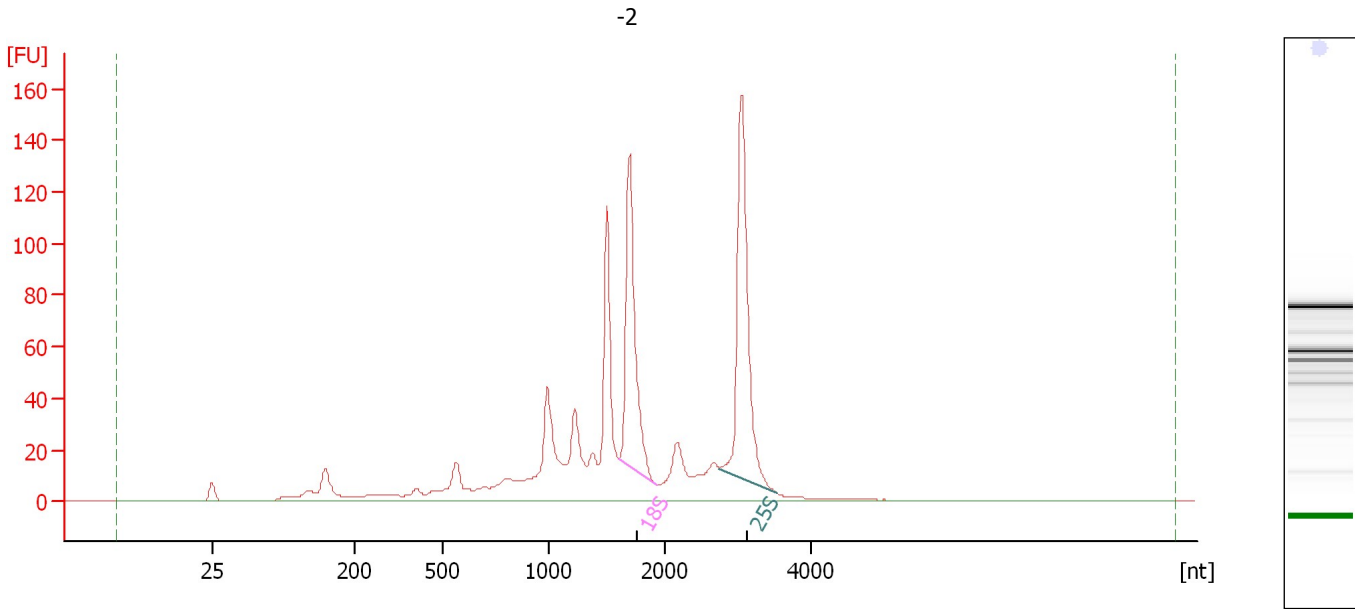
Fragment table for sample 4 : L-1

Name	Start Size [nt]	End Size [nt]	Area	% of total Area
18S	1,621	1,943	95.6	14.8
25S	2,782	3,595	134.0	20.8

Assay Class: Plant RNA Nano
Data Path: C:\...ents and Settings\Bioanalyzer\2012-11-30\2012-11-30_005.xad

Created: 11/30/2012 4:24:29 PM
Modified: 11/30/2012 4:48:37 PM

Electropherogram Summary Continued ...



Overall Results for sample 5 : -2

RNA Area:	898.8	RNA Integrity Number (RIN):	6.8 (B.02.08)
RNA Concentration:	574 ng/μl	Result Flagging Color:	
rRNA Ratio [25s / 18s]:	1.3	Result Flagging Label:	RIN: 6.80

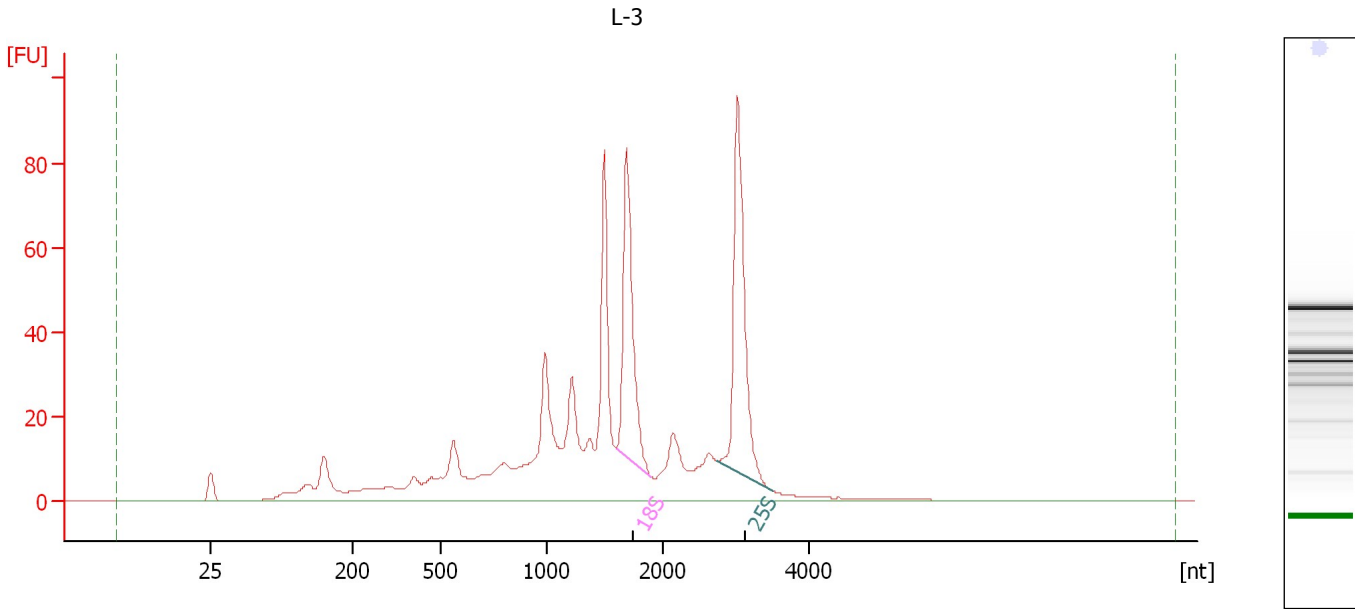
Fragment table for sample 5 : -2

Name	Start Size [nt]	End Size [nt]	Area	% of total Area
18S	1,601	1,933	130.6	14.5
25S	2,753	3,524	167.2	18.6

Assay Class: Plant RNA Nano
Data Path: C:\...ents and Settings\Bioanalyzer\2012-11-30\2012-11-30_005.xad

Created: 11/30/2012 4:24:29 PM
Modified: 11/30/2012 4:48:37 PM

Electropherogram Summary Continued ...



Overall Results for sample 6 : L-3

RNA Area:	709.6	RNA Integrity Number (RIN):	6.4 (B.02.08)
RNA Concentration:	453 ng/μl	Result Flagging Color:	
rRNA Ratio [25s / 18s]:	1.2	Result Flagging Label:	RIN: 6.40

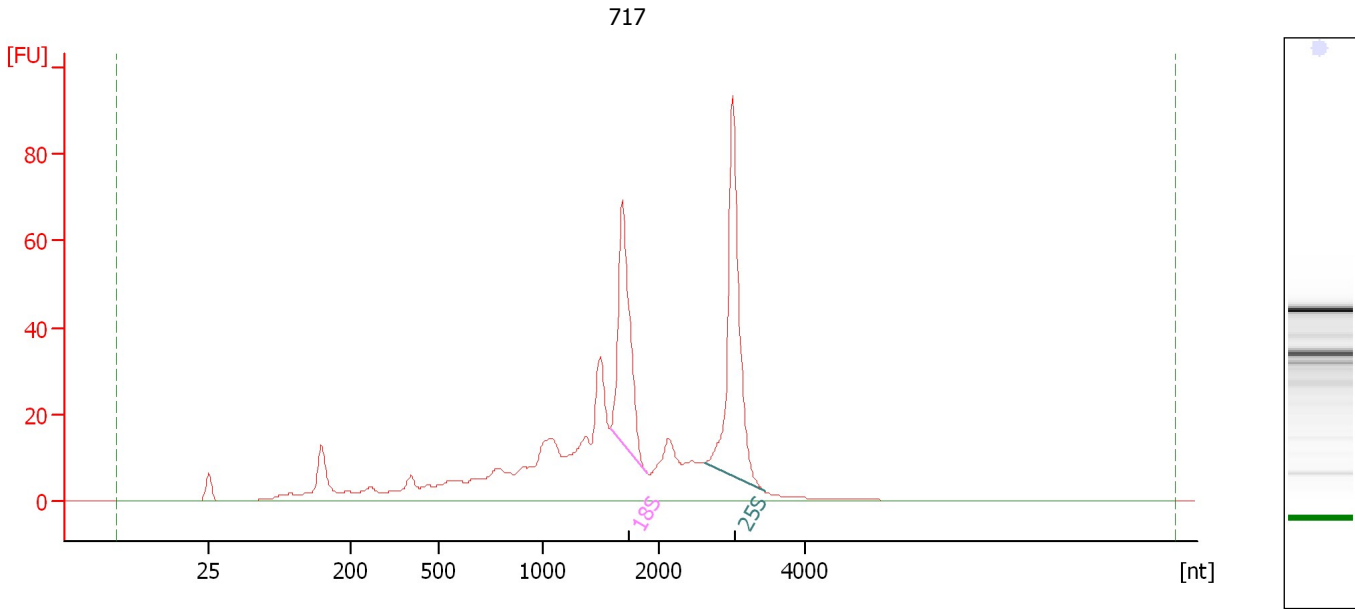
Fragment table for sample 6 : L-3

Name	Start Size [nt]	End Size [nt]	Area	% of total Area
18S	1,599	1,904	82.6	11.6
25S	2,753	3,511	102.8	14.5

Assay Class: Plant RNA Nano
Data Path: C:\...ents and Settings\Bioanalyzer\2012-11-30\2012-11-30_005.xad

Created: 11/30/2012 4:24:29 PM
Modified: 11/30/2012 4:48:37 PM

Electropherogram Summary Continued ...



Overall Results for sample 7 : 717

RNA Area:	613.4	RNA Integrity Number (RIN):	7.3 (B.02.08)
RNA Concentration:	392 ng/μl	Result Flagging Color:	
rRNA Ratio [25s / 18s]:	1.4	Result Flagging Label:	RIN: 7.30

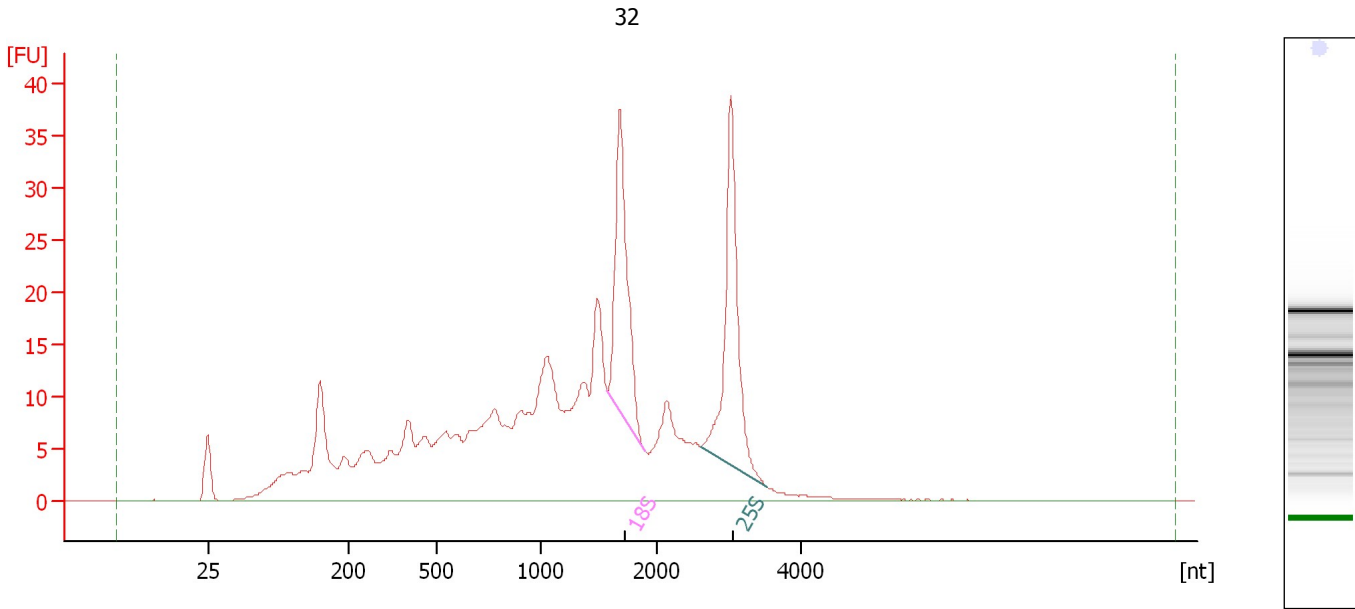
Fragment table for sample 7 : 717

Name	Start Size [nt]	End Size [nt]	Area	% of total Area
18S	1,586	1,901	80.4	13.1
25S	2,635	3,455	111.5	18.2

Assay Class: Plant RNA Nano
Data Path: C:\...ents and Settings\Bioanalyzer\2012-11-30\2012-11-30_005.xad

Created: 11/30/2012 4:24:29 PM
Modified: 11/30/2012 4:48:37 PM

Electropherogram Summary Continued ...



Overall Results for sample 8 : 32

RNA Area: 481.2 RNA Integrity Number (RIN): 6.1 (B.02.08)
RNA Concentration: 307 ng/μl Result Flagging Color:
rRNA Ratio [25s / 18s]: 1.2 Result Flagging Label: RIN: 6.10

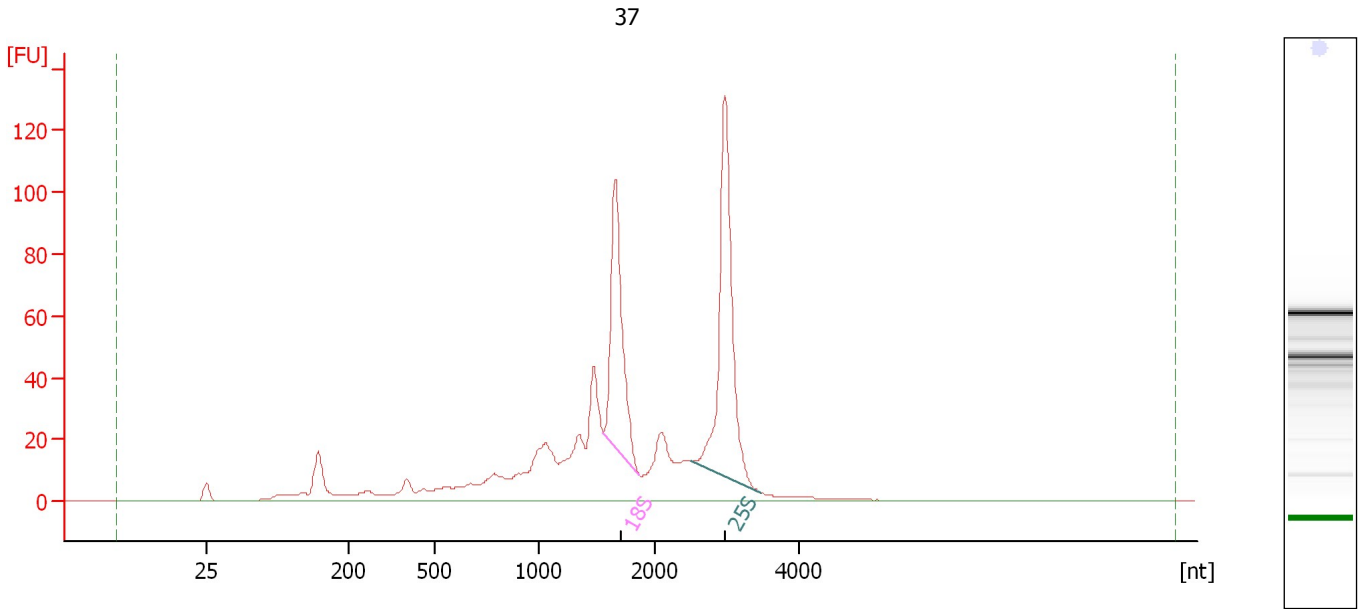
Fragment table for sample 8 : 32

Name	Start Size [nt]	End Size [nt]	Area	% of total Area
18S	1,575	1,900	42.2	8.8
25S	2,606	3,530	49.0	10.2

Assay Class: Plant RNA Nano
Data Path: C:\...ents and Settings\Bioanalyzer\2012-11-30\2012-11-30_005.xad

Created: 11/30/2012 4:24:29 PM
Modified: 11/30/2012 4:48:37 PM

Electropherogram Summary Continued ...



Overall Results for sample 9 : 37

RNA Area: 811.1 RNA Integrity Number (RIN): 7.5 (B.02.08)
RNA Concentration: 518 ng/μl Result Flagging Color:
rRNA Ratio [25s / 18s]: 1.5 Result Flagging Label: RIN: 7.50

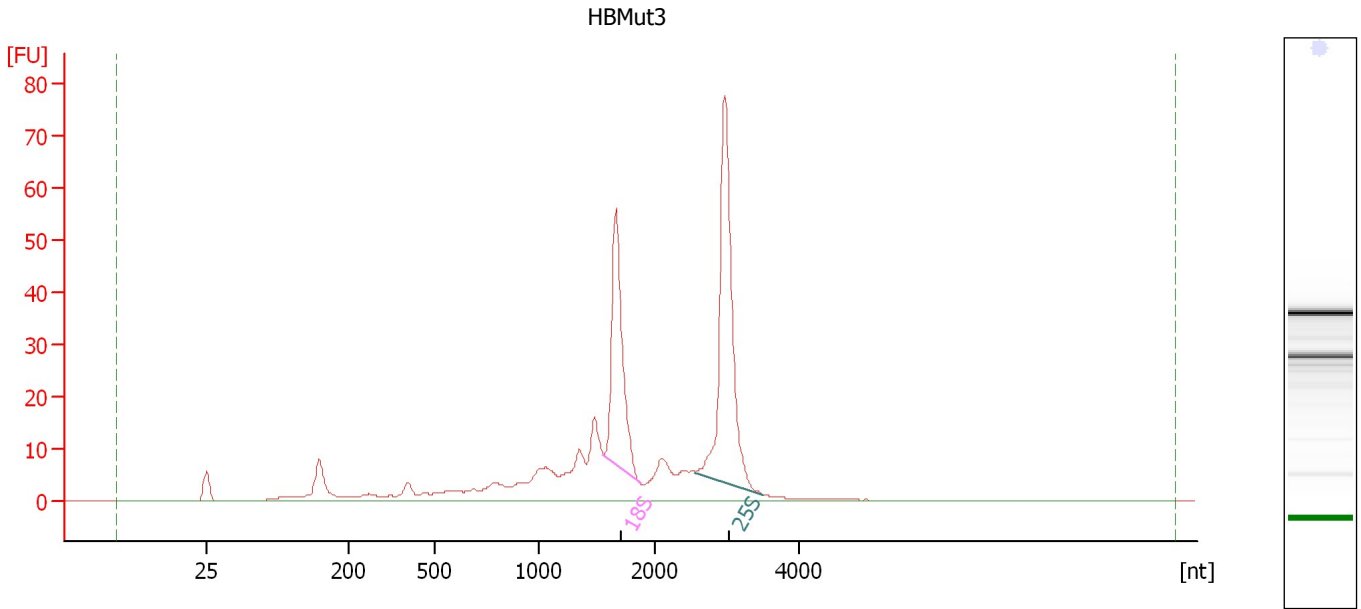
Fragment table for sample 9 : 37

Name	Start Size [nt]	End Size [nt]	Area	% of total Area
18S	1,554	1,871	117.4	14.5
25S	2,502	3,458	171.8	21.2

Assay Class: Plant RNA Nano
Data Path: C:\...ents and Settings\Bioanalyzer\2012-11-30\2012-11-30_005.xad

Created: 11/30/2012 4:24:29 PM
Modified: 11/30/2012 4:48:37 PM

Electropherogram Summary Continued ...



Overall Results for sample 10 : HBMut3

RNA Area:	375.5	RNA Integrity Number (RIN):	8 (B.02.08)
RNA Concentration:	240 ng/μl	Result Flagging Color:	
rRNA Ratio [25s / 18s]:	1.6	Result Flagging Label:	RIN:8

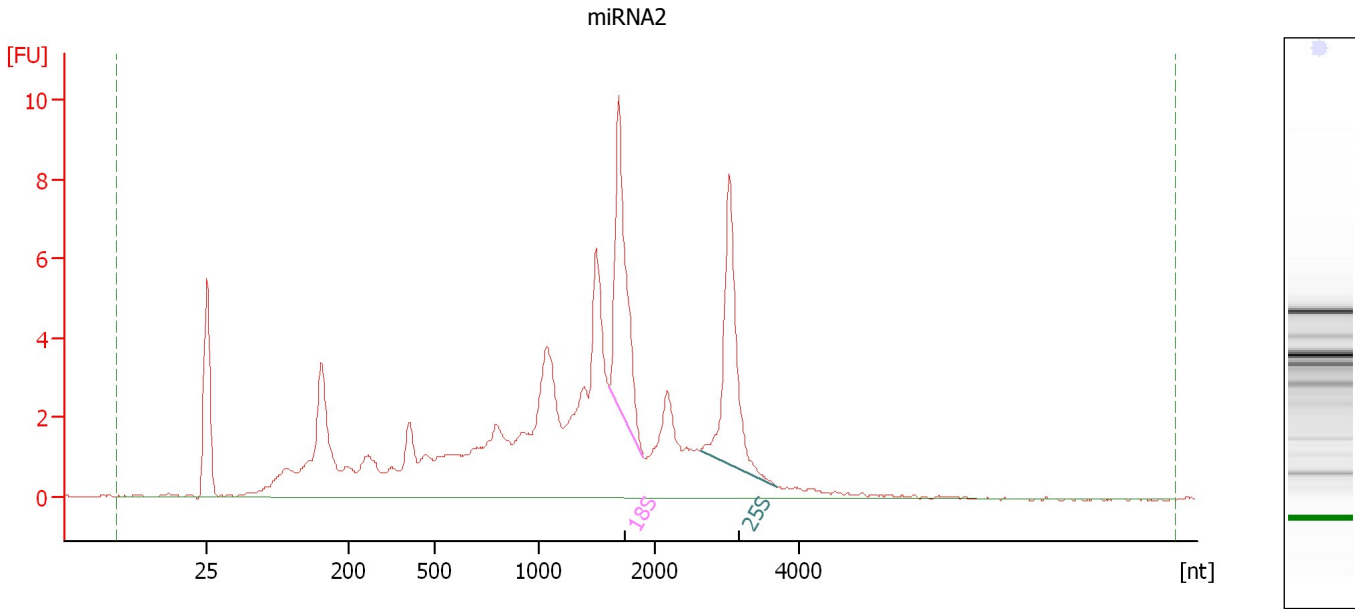
Fragment table for sample 10 : HBMut3

Name	Start Size [nt]	End Size [nt]	Area	% of total Area
18S	1,554	1,880	62.5	16.6
25S	2,561	3,488	99.1	26.4

Assay Class: Plant RNA Nano
Data Path: C:\...ents and Settings\Bioanalyzer\2012-11-30\2012-11-30_005.xad

Created: 11/30/2012 4:24:29 PM
Modified: 11/30/2012 4:48:37 PM

Electropherogram Summary Continued ...



Overall Results for sample 11 : miRNA2

RNA Area: 112.1 RNA Integrity Number (RIN): 6.3 (B.02.08)
RNA Concentration: 72 ng/μl Result Flagging Color:
rRNA Ratio [25s / 18s]: 1.0 Result Flagging Label: RIN: 6.30

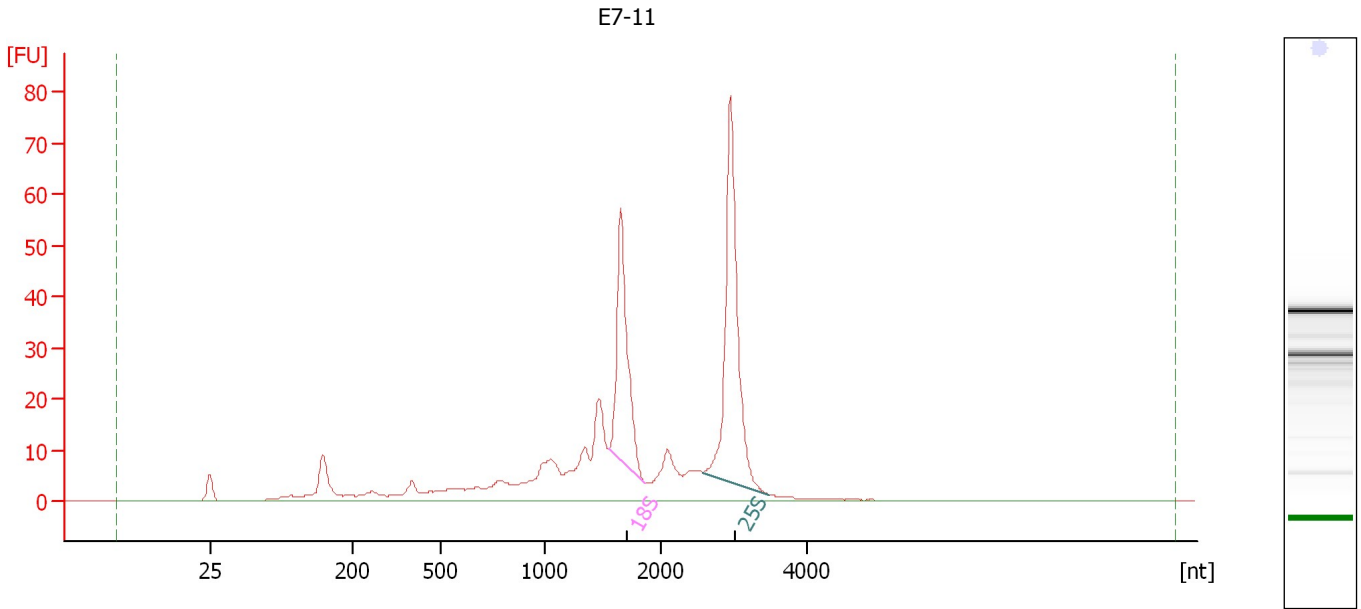
Fragment table for sample 11 : miRNA2

Name	Start Size [nt]	End Size [nt]	Area	% of total Area
18S	1,610	1,908	10.3	9.2
25S	2,635	3,694	10.2	9.1

Assay Class: Plant RNA Nano
Data Path: C:\...ents and Settings\Bioanalyzer\2012-11-30\2012-11-30_005.xad

Created: 11/30/2012 4:24:29 PM
Modified: 11/30/2012 4:48:37 PM

Electropherogram Summary Continued ...



Overall Results for sample 12 : E7-11

RNA Area: 408.7 RNA Integrity Number (RIN): 7.8 (B.02.08)
RNA Concentration: 261 ng/μl Result Flagging Color:
rRNA Ratio [25s / 18s]: 1.6 Result Flagging Label: RIN: 7.80

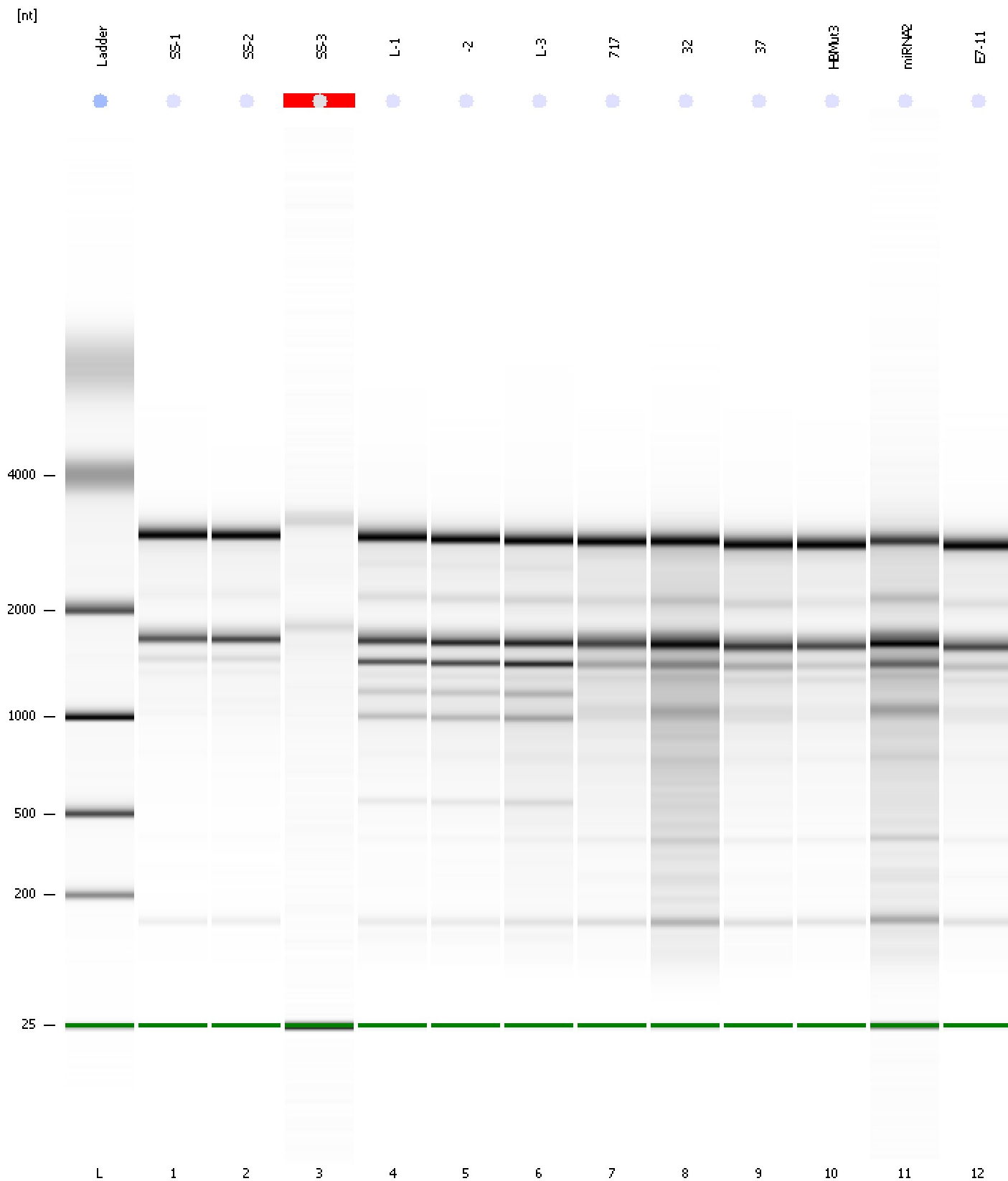
Fragment table for sample 12 : E7-11

Name	Start Size [nt]	End Size [nt]	Area	% of total Area
18S	1,551	1,866	63.5	15.5
25S	2,577	3,498	99.4	24.3

Assay Class: Plant RNA Nano
Data Path: C:\...ents and Settings\Bioanalyzer\2012-11-30\2012-11-30_005.xad

Created: 11/30/2012 4:24:29 PM
Modified: 11/30/2012 4:48:37 PM

Gel Image



Assay Class: Plant RNA Nano
 Data Path: C:\...ents and Settings\Bioanalyzer\2012-11-30\2012-11-30_005.xad

Created: 11/30/2012 4:24:29 PM
 Modified: 11/30/2012 4:48:37 PM

Run Logbook

Description	Number	Source	Category	Sub Category	Time	Time Zone	User	Host
Run ended on port 1 (Number of wells acquired: 13)		Instrument	Run		11/30/2012 4:48:18 PM	(GMT --08:00) Pacific Standard Time	UC Davis	D8XSMGH1
Run started on port 1 (File: C:\Documents and Settings\Bioanalyzer\2012-11-30\2012-11-30_005.xad)		Instrument	Run		11/30/2012 4:24:35 PM	(GMT --08:00) Pacific Standard Time	UC Davis	D8XSMGH1
Product Number : G2938B		Instrument	Run		11/30/2012 4:24:35 PM	(GMT --08:00) Pacific Standard Time	UC Davis	D8XSMGH1
Name :		Instrument	Run		11/30/2012 4:24:35 PM	(GMT --08:00) Pacific Standard Time	UC Davis	D8XSMGH1
Vendor : Agilent Technologies		Instrument	Run		11/30/2012 4:24:35 PM	(GMT --08:00) Pacific Standard Time	UC Davis	D8XSMGH1
Serial# : DE13701086		Instrument	Run		11/30/2012 4:24:35 PM	(GMT --08:00) Pacific Standard Time	UC Davis	D8XSMGH1
Firmware : C.01.069		Instrument	Run		11/30/2012 4:24:35 PM	(GMT --08:00) Pacific Standard Time	UC Davis	D8XSMGH1
Cartridge : Electrode		Instrument	Run		11/30/2012 4:24:35 PM	(GMT --08:00) Pacific Standard Time	UC Davis	D8XSMGH1