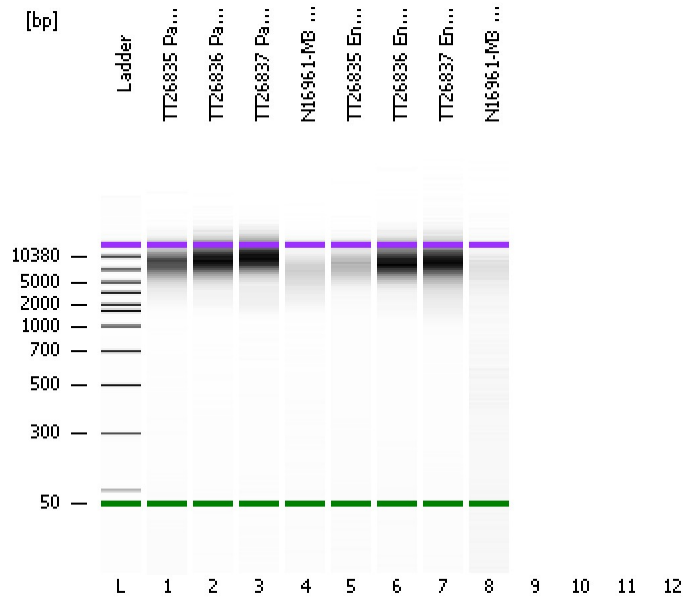


Assay Class: DNA 12000
Data Path: C:\...ents and Settings\Bioanalyzer\2012-12-03\2012-12-03_001.xad

Created: 12/3/2012 2:28:20 PM
Modified: 12/3/2012 3:00:12 PM

Electrophoresis File Run Summary



Instrument Information:

Instrument Name: DE13701086 Firmware: C.01.069
Serial#: DE13701086 Type: G2938B

Assay Information:

Assay Origin Path: C:\Program Files\Agilent\2100 bioanalyzer\2100 expert\assays\dsDNA\DNA 12000 Series II.xsy

Assay Class: DNA 12000

Version: 2.4

Assay Comments: DNA Analysis 100 -12000 bp

© Copyright 2003-2009 Agilent Technologies, Inc.

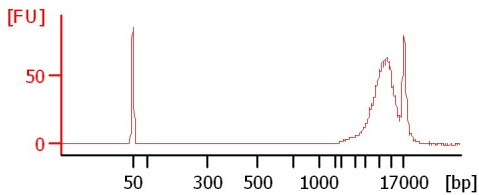
Chip Information:

Chip Lot #:

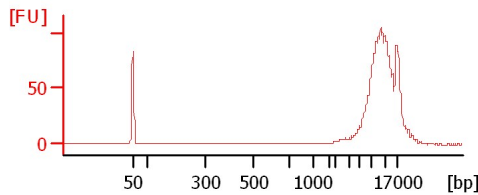
Reagent Kit Lot #:

Chip Comments:

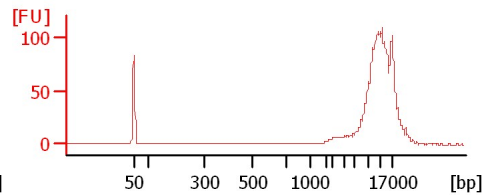
TT26835 PacB 10kb lib



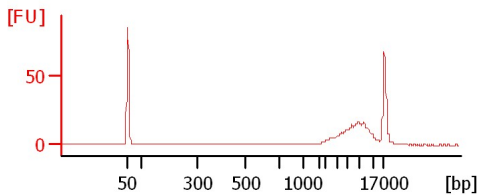
TT26836 PacB 10kb lib 1:2



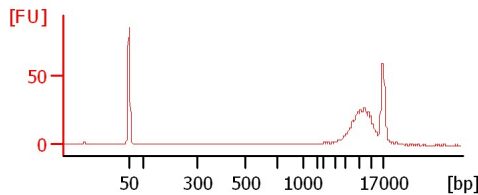
TT26837 PacB 10kb lib 1:4



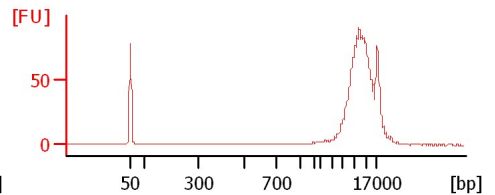
N16961-M3 PacB 10kb lib



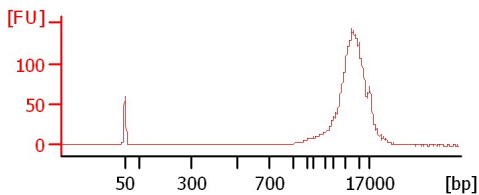
TT26835 End Repair 1:3



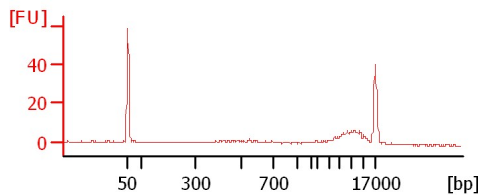
TT26836 End Repair 1:3



TT26837 End Repair 1:3



N16961-M3 End Repair 1:2



Assay Class: DNA 12000
 Data Path: C:\...ents and Settings\Bioanalyzer\2012-12-03\2012-12-03_001.xad

Created: 12/3/2012 2:28:20 PM
 Modified: 12/3/2012 3:00:12 PM

Electrophoresis File Run Summary (Chip Summary)

Sample Name	Sample Comment	Rest. Digest	Status	Observation	Result Label	Result Color
TT26835 PacB 10kb lib		<input type="checkbox"/>	✓			
TT26836 PacB 10kb lib 1:2		<input type="checkbox"/>	✓			
TT26837 PacB 10kb lib 1:4		<input type="checkbox"/>	✓			
N16961-M3 PacB 10kb lib		<input type="checkbox"/>	✓			
TT26835 End Repair 1:3		<input type="checkbox"/>	✓			
TT26836 End Repair 1:3		<input type="checkbox"/>	✓			
TT26837 End Repair 1:3		<input type="checkbox"/>	✓			
N16961-M3 End Repair 1:2		<input type="checkbox"/>	✓			
		<input type="checkbox"/>				
		<input type="checkbox"/>				
		<input type="checkbox"/>				
Ladder		<input type="checkbox"/>	✓			

Chip Lot #

Reagent Kit Lot #

Chip Comments :

Assay Class: DNA 12000
Data Path: C:\...ents and Settings\Bioanalyzer\2012-12-03\2012-12-03_001.xad

Created: 12/3/2012 2:28:20 PM
Modified: 12/3/2012 3:00:12 PM

Electrophoresis Assay Details

General Analysis Settings

Number of Available Sample and Ladder Wells (Max.) : 13
Minimum Visible Range [s] : 20
Maximum Visible Range [s] : 99
Start Analysis Time Range [s] : 20
End Analysis Time Range [s] : 98.95
Ladder Concentration [ng/μl] : 44
Uses Standard Area for Ladder Fragments
Lower Marker Concentration [ng/μl] : 8.3
Upper Marker Concentration [ng/μl] : 4.2
Used Upper Marker for Quantitation
This is a Qualitative Assay Only
Standard Curve Fit is Point to Point
Show Data Aligned to Lower and Upper Marker

Integrator Settings

Integration Start Time [s] : 20
Integration End Time [s] : 98.95
Slope Threshold : 0.8
Height Threshold [FU] : 20
Area Threshold : 0.1
Width Threshold [s] : 0.5
Baseline Plateau [s] : 0.5

Filter Settings

Filter Width [s] : 0.5
Polynomial Order : 4

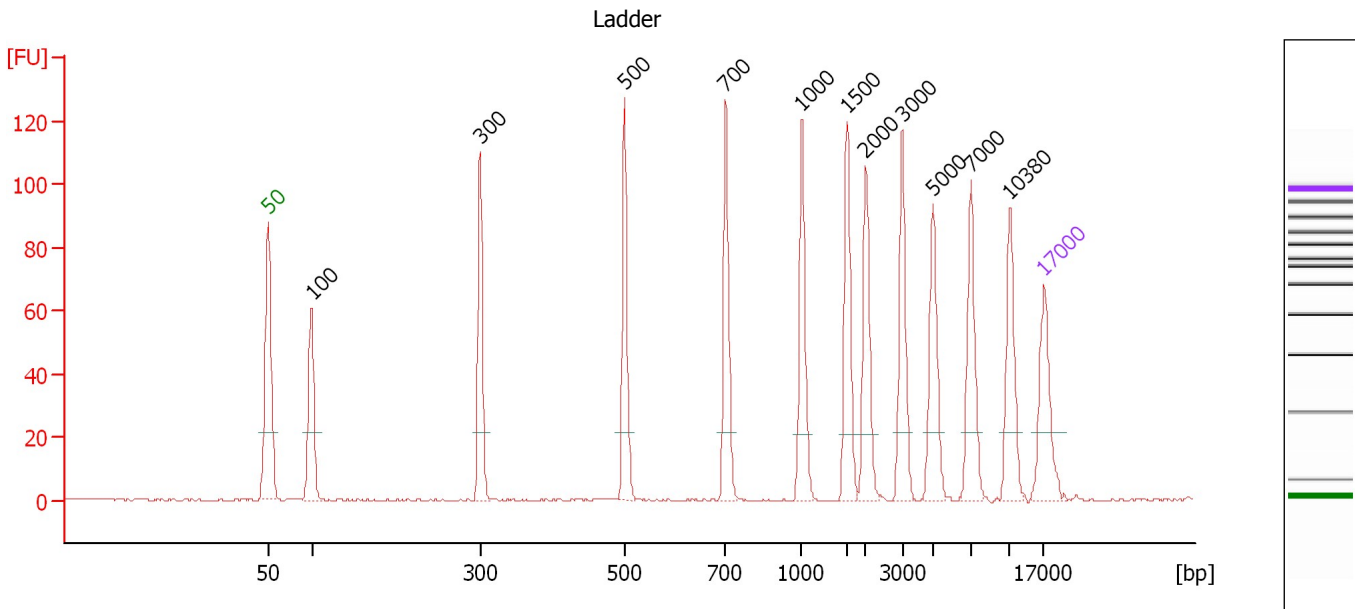
Ladder

Ladder Peak	Size	Area
1	50	120
2	100	48
3	300	61
4	500	77
5	700	81
6	1000	86
7	1500	92
8	2000	92
9	3000	96
10	5000	100
11	7000	98
12	10380	102
13	17000	110

Assay Class: DNA 12000
 Data Path: C:\...ents and Settings\Bioanalyzer\2012-12-03\2012-12-03_001.xad

Created: 12/3/2012 2:28:20 PM
 Modified: 12/3/2012 3:00:12 PM

Electropherogram Summary



Peak table for Ladder

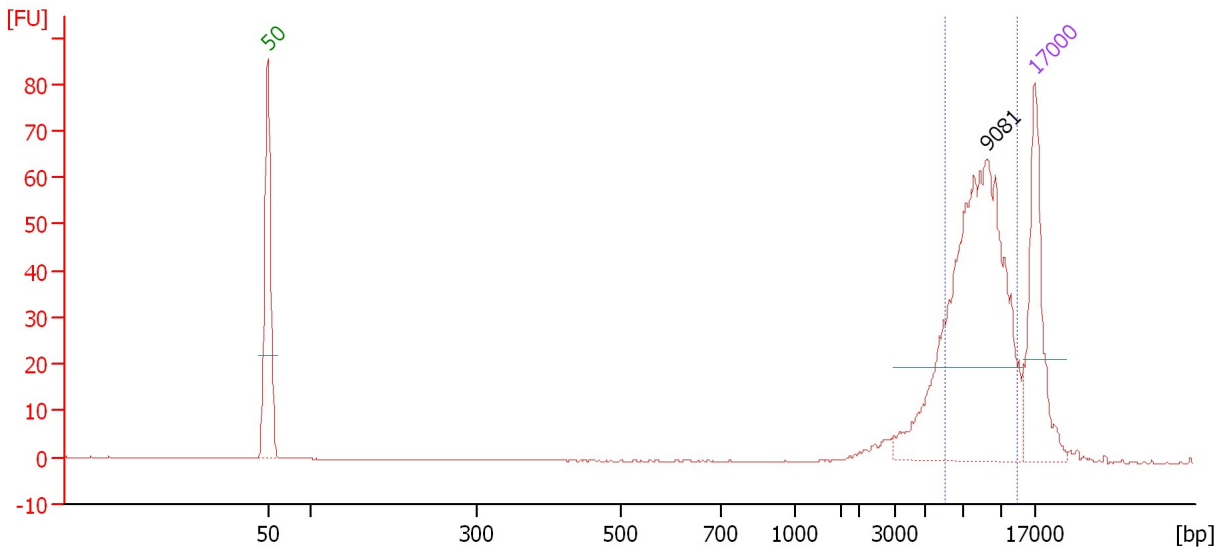
Peak	Size [bp]	Conc. [ng/μl]	Molarity [nmol/l]	Observations
1	50	8.30	251.5	Lower Marker
2	100	4.00	60.6	Ladder Peak
3	300	4.00	20.2	Ladder Peak
4	500	4.00	12.1	Ladder Peak
5	700	4.00	8.7	Ladder Peak
6	1,000	4.00	6.1	Ladder Peak
7	1,500	4.00	4.0	Ladder Peak
8	2,000	4.00	3.0	Ladder Peak
9	3,000	4.00	2.0	Ladder Peak
10	5,000	4.00	1.2	Ladder Peak
11	7,000	4.00	0.9	Ladder Peak
12	10,380	4.00	0.6	Ladder Peak
13	17,000	4.20	0.4	Upper Marker

Assay Class: DNA 12000
 Data Path: C:\...ents and Settings\Bioanalyzer\2012-12-03\2012-12-03_001.xad

Created: 12/3/2012 2:28:20 PM
 Modified: 12/3/2012 3:00:12 PM

Electropherogram Summary Continued ...

TT26835 PacB 10kb lib



Overall Results for sample 1 : TT26835 PacB 10kb lib

Number of peaks found: 1 Area 1: 241.7

Peak table for sample 1 : TT26835 PacB 10kb lib

Peak	Size [bp]	Conc. [ng/μl]	Molarity [nmol/l]	Observations
1	50	8.30	251.5	Lower Marker
2	9,081	15.15	2.5	
3	17,000	4.20	0.4	Upper Marker

Region table for sample 1 : TT26835 PacB 10kb lib

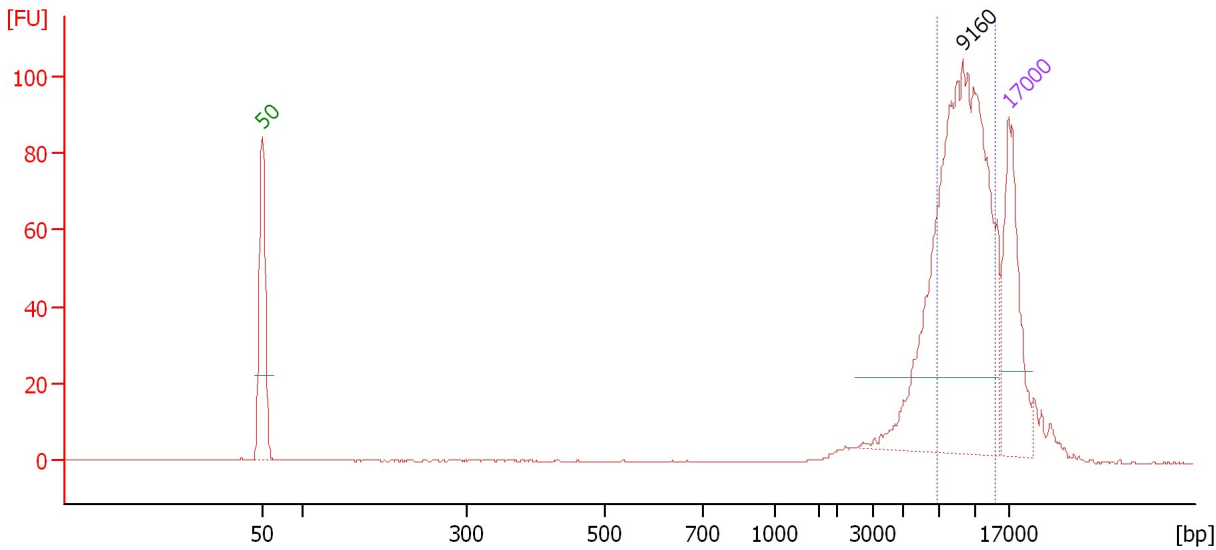
From [bp]	To [bp]	Average Size [bp]	Conc. [ng/μl]	Area	% of Total	Size distribution in CV [%]	Color
6,062	13,561	8,745	12.36	241.7	79	20.2	Blue

Assay Class: DNA 12000
 Data Path: C:\...ents and Settings\Bioanalyzer\2012-12-03\2012-12-03_001.xad

Created: 12/3/2012 2:28:20 PM
 Modified: 12/3/2012 3:00:12 PM

Electropherogram Summary Continued ...

TT26836 PacB 10kb lib 1:2



Overall Results for sample 2 : TT26836 PacB 10kb lib 1:2

Number of peaks found: 1 Area: 355.1

Peak table for sample 2 : TT26836 PacB 10kb lib 1:2

Peak	Size [bp]	Conc. [ng/μl]	Molarity [nmol/l]	Observations
1	50	8.30	251.5	Lower Marker
2	9,160	17.52	2.9	
3	17,000	4.20	0.4	Upper Marker

Region table for sample 2 : TT26836 PacB 10kb lib 1:2

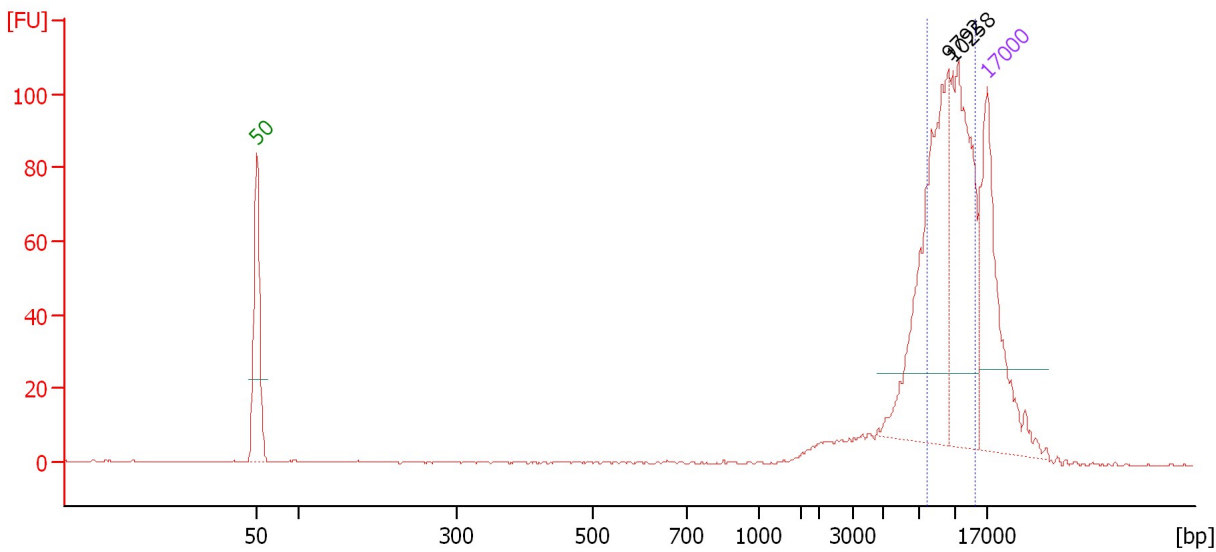
From [bp]	To [bp]	Average Size [bp]	Conc. [ng/μl]	Area	% of Total	Size distribution in CV [%]	Color
6,893	14,087	9,654	13.69	355.1	69	19.3	Blue

Assay Class: DNA 12000
 Data Path: C:\...ents and Settings\Bioanalyzer\2012-12-03\2012-12-03_001.xad

Created: 12/3/2012 2:28:20 PM
 Modified: 12/3/2012 3:00:12 PM

Electropherogram Summary Continued ...

TT26837 PacB 10kb lib 1:4



Overall Results for sample 3 : TT26837 PacB 10kb lib 1:4

Number of peaks found: 2 Area 1: 330.4

Peak table for sample 3 : TT26837 PacB 10kb lib 1:4

Peak	Size [bp]	Conc. [ng/μl]	Molarity [nmol/l]	Observations
1	50	8.30	251.5	Lower Marker
2	9,792	6.57	1.0	
3	10,258	5.28	0.8	
4	17,000	4.20	0.4	Upper Marker

Region table for sample 3 : TT26837 PacB 10kb lib 1:4

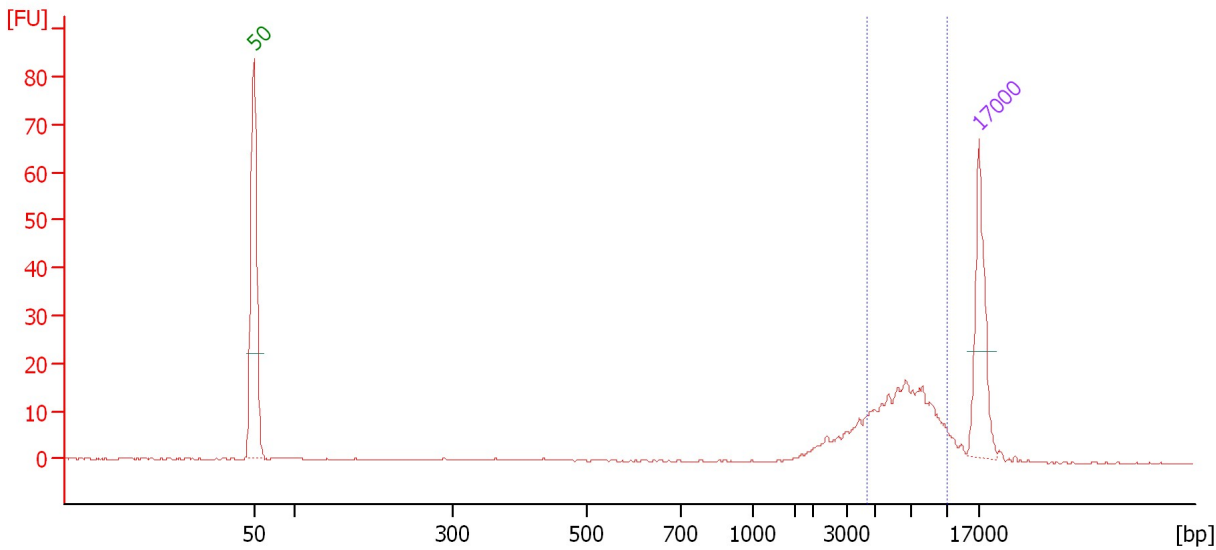
From [bp]	To [bp]	Average Size [bp]	Conc. [ng/μl]	Area	% of Total	Size distribution in CV [%]	Color
7,772	14,764	10,520	9.72	330.4	67	18.3	Blue

Assay Class: DNA 12000
Data Path: C:\...ents and Settings\Bioanalyzer\2012-12-03\2012-12-03_001.xad

Created: 12/3/2012 2:28:20 PM
Modified: 12/3/2012 3:00:12 PM

Electropherogram Summary Continued ...

N16961-M3 PacB 10kb lib



Overall Results for sample 4 : N16961-M3 PacB 10kb lib

Number of peaks found: 0 Area 1: 71.7

Peak table for sample 4 : N16961-M3 PacB 10kb lib

Peak	Size [bp]	Conc. [ng/μl]	Molarity [nmol/l]	Observations
1	50	8.30	251.5	Lower Marker
2	17,000	4.20	0.4	Upper Marker

Region table for sample 4 : N16961-M3 PacB 10kb lib

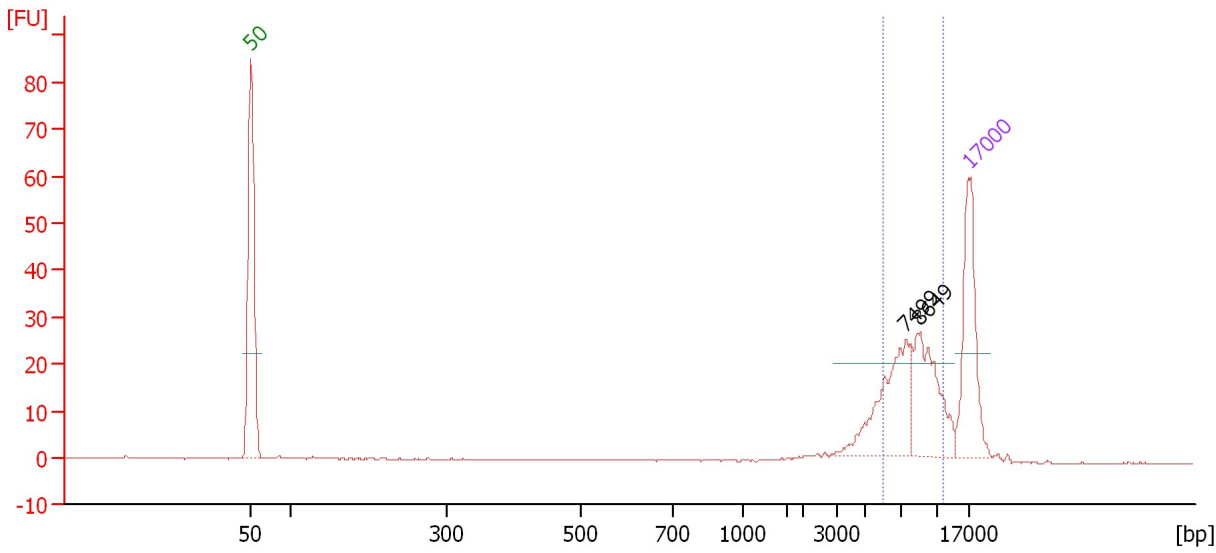
From [bp]	To [bp]	Average Size [bp]	Conc. [ng/μl]	Area	% of Total	Size distribution in CV [%]	Color
4,409	10,482	6,969	6.39	71.7	64	22.3	Blue

Assay Class: DNA 12000
 Data Path: C:\...ents and Settings\Bioanalyzer\2012-12-03\2012-12-03_001.xad

Created: 12/3/2012 2:28:20 PM
 Modified: 12/3/2012 3:00:12 PM

Electropherogram Summary Continued ...

TT26835 End Repair 1:3



Overall Results for sample 5 : TT26835 End Repair 1:3

Number of peaks found: 2 Area 1: 91.9

Peak table for sample 5 : TT26835 End Repair 1:3

Peak	Size [bp]	Conc. [ng/μl]	Molarity [nmol/l]	Observations
1	50	8.30	251.5	Lower Marker
2	7,499	4.34	0.9	
3	8,649	4.10	0.7	
4	17,000	4.20	0.4	Upper Marker

Region table for sample 5 : TT26835 End Repair 1:3

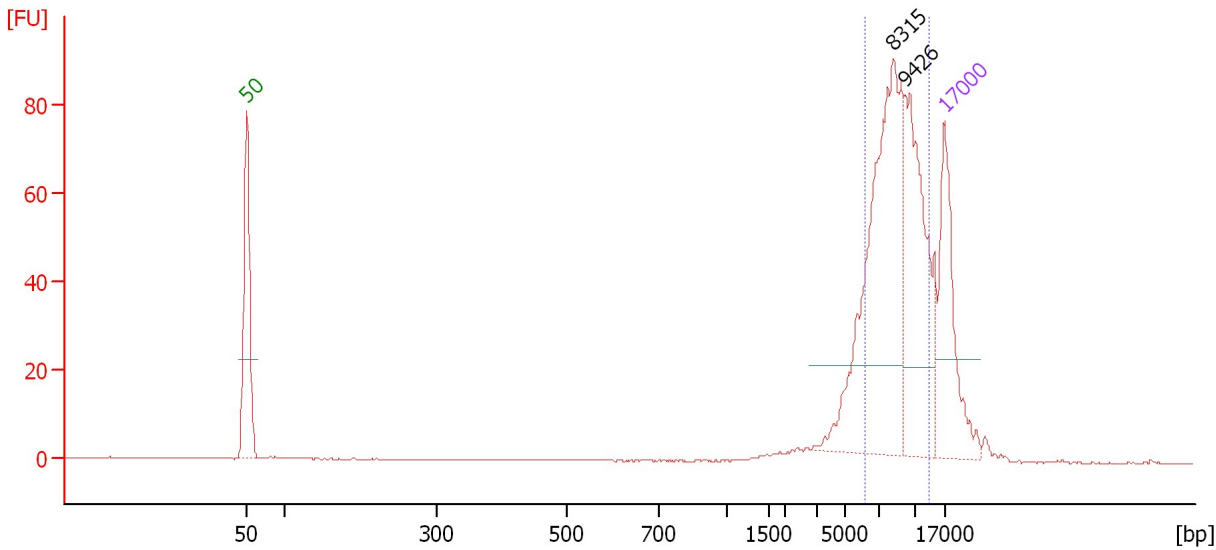
From [bp]	To [bp]	Average Size [bp]	Conc. [ng/μl]	Area	% of Total	Size distribution in CV [%]	Color
5,990	11,781	8,226	6.87	91.9	68	17.8	Blue

Assay Class: DNA 12000
 Data Path: C:\...ents and Settings\Bioanalyzer\2012-12-03\2012-12-03_001.xad

Created: 12/3/2012 2:28:20 PM
 Modified: 12/3/2012 3:00:12 PM

Electropherogram Summary Continued ...

TT26836 End Repair 1:3



Overall Results for sample 6 : TT26836 End Repair 1:3

Number of peaks found: 2 Area 1: 322.3

Peak table for sample 6 : TT26836 End Repair 1:3

Peak	Size [bp]	Conc. [ng/μl]	Molarity [nmol/l]	Observations
1	50	8.30	251.5	Lower Marker
2	8,315	11.44	2.1	
3	9,426	6.55	1.1	
4	17,000	4.20	0.4	Upper Marker

Region table for sample 6 : TT26836 End Repair 1:3

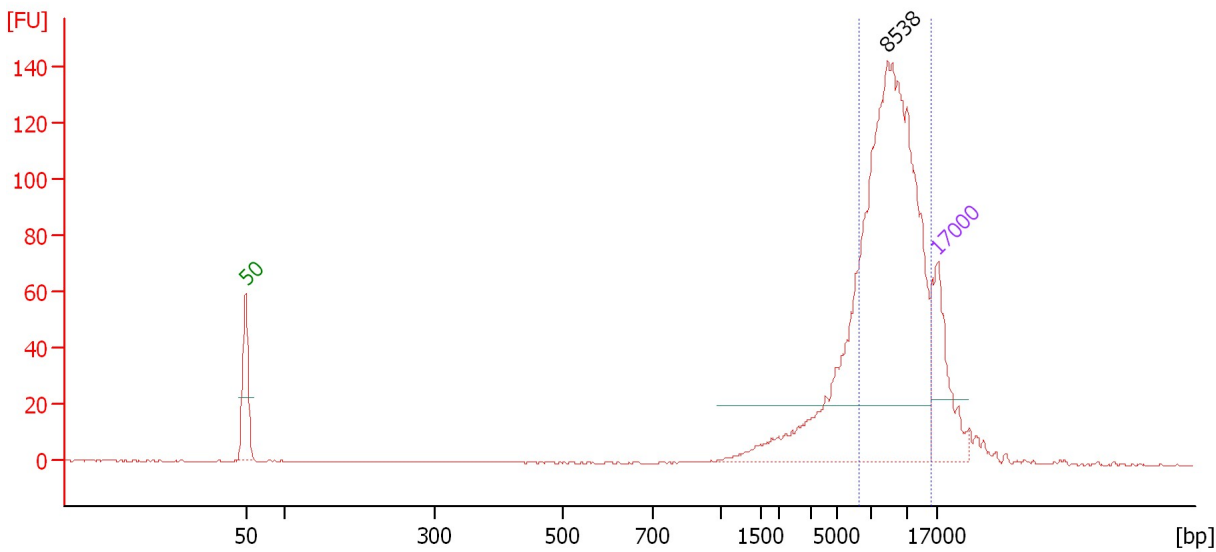
From [bp]	To [bp]	Average Size [bp]	Conc. [ng/μl]	Area	% of Total	Size distribution in CV [%]	Color
6,108	13,432	8,852	15.37	322.3	77	20.7	Blue

Assay Class: DNA 12000
 Data Path: C:\...ents and Settings\Bioanalyzer\2012-12-03\2012-12-03_001.xad

Created: 12/3/2012 2:28:20 PM
 Modified: 12/3/2012 3:00:12 PM

Electropherogram Summary Continued ...

TT26837 End Repair 1:3



Overall Results for sample 7 : TT26837 End Repair 1:3

Number of peaks found: 1 Area: 555.2

Peak table for sample 7 : TT26837 End Repair 1:3

Peak	Size [bp]	Conc. [ng/μl]	Molarity [nmol/l]	Observations
1	50	8.30	251.5	Lower Marker
2	8,538	32.08	5.7	
3	17,000	4.20	0.4	Upper Marker

Region table for sample 7 : TT26837 End Repair 1:3

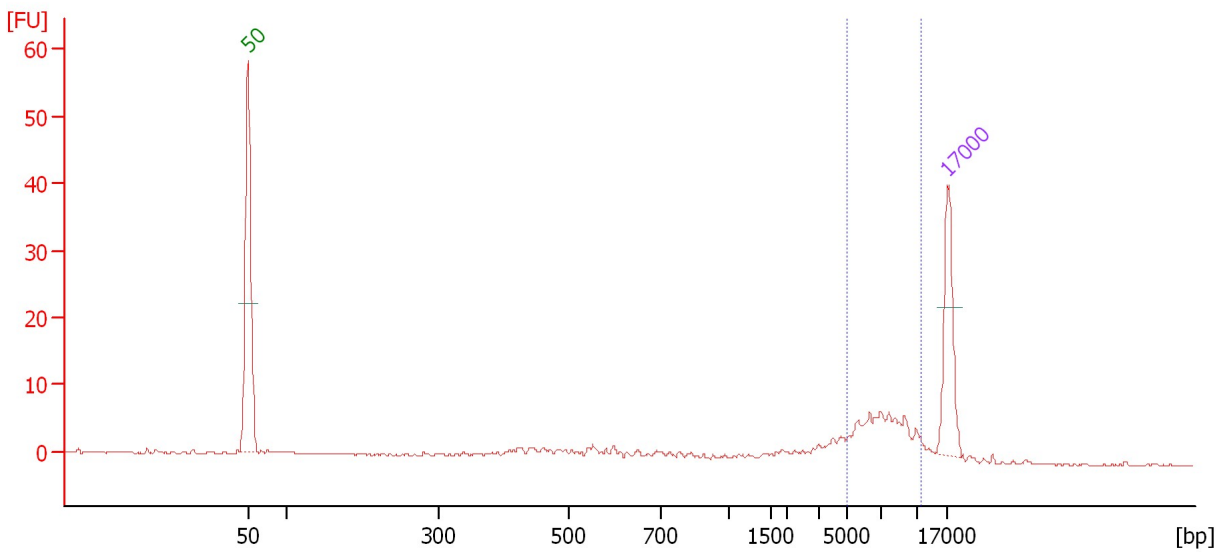
From [bp]	To [bp]	Average Size [bp]	Conc. [ng/μl]	Area	% of Total	Size distribution in CV [%]	Color
6,193	15,697	9,501	25.33	555.2	75	25.1	Blue

Assay Class: DNA 12000
 Data Path: C:\...ents and Settings\Bioanalyzer\2012-12-03\2012-12-03_001.xad

Created: 12/3/2012 2:28:20 PM
 Modified: 12/3/2012 3:00:12 PM

Electropherogram Summary Continued ...

N16961-M3 End Repair 1:2



Overall Results for sample 8 : N16961-M3 End Repair 1:2

Number of peaks found: 0 Area 1: 29.1

Peak table for sample 8 : N16961-M3 End Repair 1:2

Peak	Size [bp]	Conc. [ng/μl]	Molarity [nmol/l]	Observations
1	50	8.30	251.5	Lower Marker
2	17,000	4.20	0.4	Upper Marker

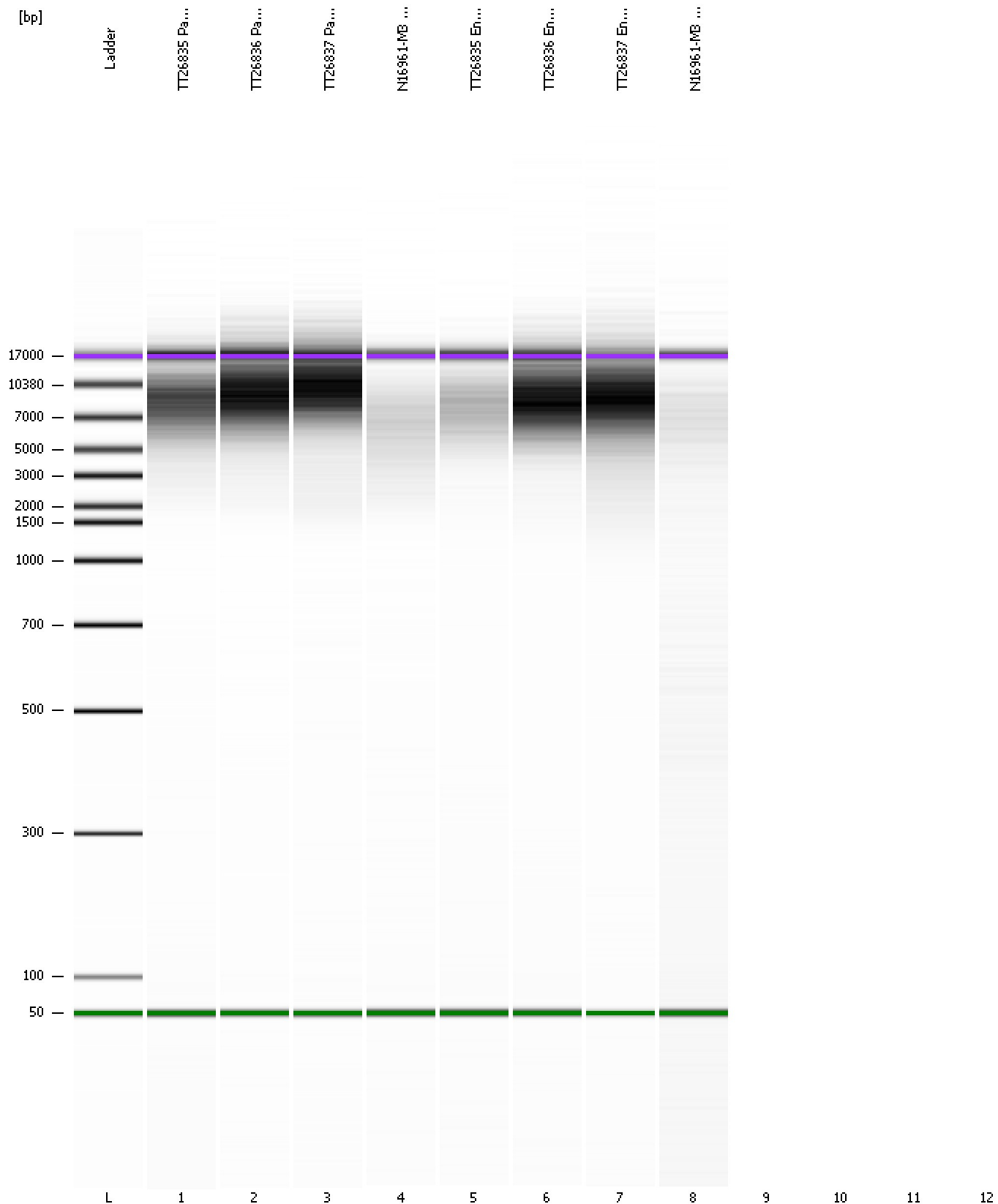
Region table for sample 8 : N16961-M3 End Repair 1:2

From [bp]	To [bp]	Average Size [bp]	Conc. [ng/μl]	Area	% of Total	Size distribution in CV [%]	Color
5,016	11,203	7,451	4.49	29.1	42	20.9	Blue

Assay Class: DNA 12000
Data Path: C:\...ents and Settings\Bioanalyzer\2012-12-03\2012-12-03_001.xad

Created: 12/3/2012 2:28:20 PM
Modified: 12/3/2012 3:00:12 PM

Gel Image



Assay Class: DNA 12000
Data Path: C:\...ents and Settings\Bioanalyzer\2012-12-03\2012-12-03_001.xad

Created: 12/3/2012 2:28:20 PM
Modified: 12/3/2012 3:00:12 PM

Invalid Samples

Sample 9 has not been run, no results available.

Sample 10 has not been run, no results available.

Sample 11 has not been run, no results available.

Sample 12 has not been run, no results available.

Assay Class: DNA 12000
 Data Path: C:\...ents and Settings\Bioanalyzer\2012-12-03\2012-12-03_001.xad

Created: 12/3/2012 2:28:20 PM
 Modified: 12/3/2012 3:00:12 PM

Run Logbook

Description	Number	Source	Category	Sub Category	Time	Time Zone	User	Host
Run ended on port 1 (Number of wells acquired: 9)		Instrument	Run		12/3/2012 2:54:51 PM	(GMT --08:00) Pacific Standard Time	UC Davis	D8XSMGH1
Run started on port 1 (File: C:\Documents and Settings\Bioanalyzer\2012-12-03\2012-12-03_001.xad)		Instrument	Run		12/3/2012 2:28:26 PM	(GMT --08:00) Pacific Standard Time	UC Davis	D8XSMGH1
Product Number : G2938B		Instrument	Run		12/3/2012 2:28:26 PM	(GMT --08:00) Pacific Standard Time	UC Davis	D8XSMGH1
Name :		Instrument	Run		12/3/2012 2:28:26 PM	(GMT --08:00) Pacific Standard Time	UC Davis	D8XSMGH1
Vendor : Agilent Technologies		Instrument	Run		12/3/2012 2:28:26 PM	(GMT --08:00) Pacific Standard Time	UC Davis	D8XSMGH1
Serial# : DE13701086		Instrument	Run		12/3/2012 2:28:26 PM	(GMT --08:00) Pacific Standard Time	UC Davis	D8XSMGH1
Firmware : C.01.069		Instrument	Run		12/3/2012 2:28:26 PM	(GMT --08:00) Pacific Standard Time	UC Davis	D8XSMGH1
Cartridge : Electrode		Instrument	Run		12/3/2012 2:28:26 PM	(GMT --08:00) Pacific Standard Time	UC Davis	D8XSMGH1