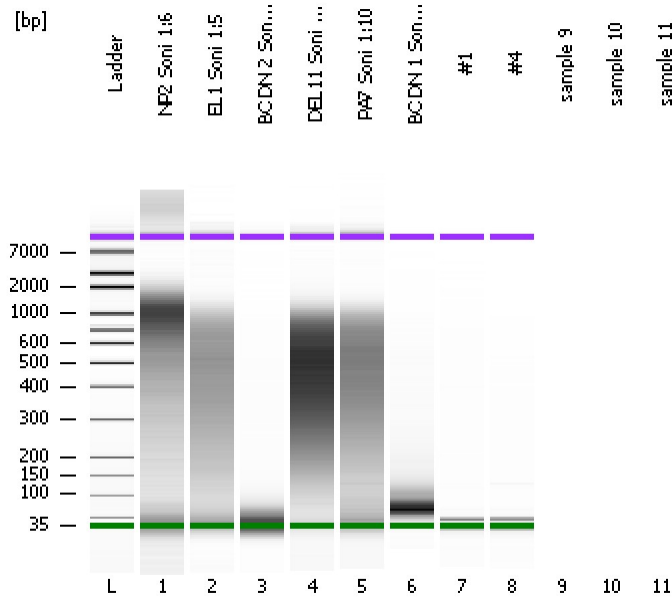


Assay Class: High Sensitivity DNA Assay
Data Path: C:\...ents and Settings\Bioanalyzer\2012-12-03\2012-12-03_002.xad

Created: 12/3/2012 5:06:14 PM
Modified: 12/3/2012 5:38:59 PM

Electrophoresis File Run Summary



Instrument Information:

Instrument Name: DE13701086 Firmware: C.01.069
Serial#: DE13701086 Type: G2938B

Assay Information:

Assay Origin Path: C:\Program Files\Agilent\2100 bioanalyzer\2100 expert\assays\dsDNA\High Sensitivity DNA.xsy
Assay Class: High Sensitivity DNA Assay
Version: 1.03
Assay Comments: Copyright © 2003-2010 Agilent Technologies

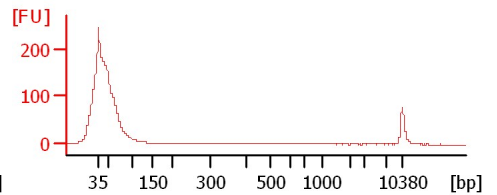
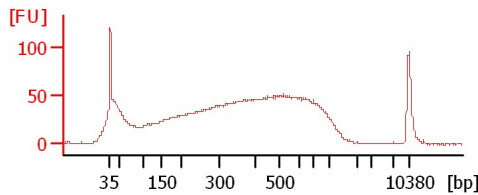
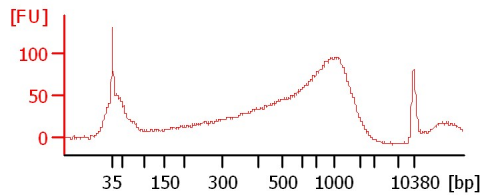
Chip Information:

Chip Lot #:
Reagent Kit Lot #:
Chip Comments:

NP2 Soni 1:6

EL1 Soni 1:5

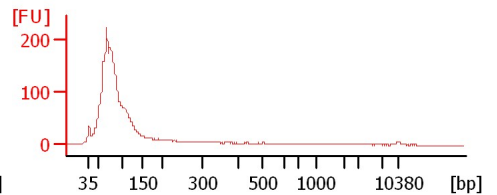
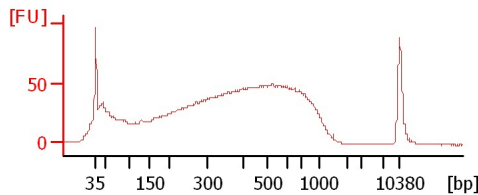
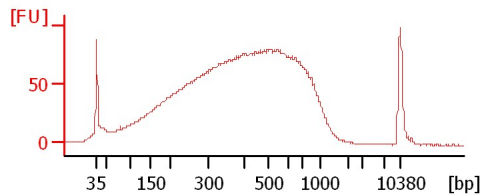
BC DN 2 Soni 1:8



DEL11 Soni 1:12

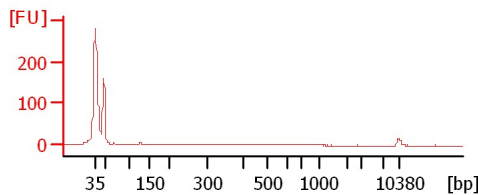
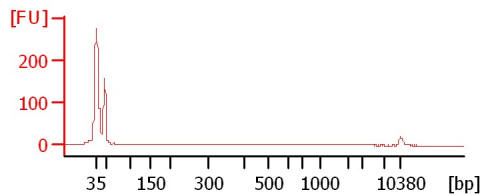
PA7 Soni 1:10

BC DN 1 Soni 1:3



#1

#4



Assay Class: High Sensitivity DNA Assay
 Data Path: C:\...ents and Settings\Bioanalyzer\2012-12-03\2012-12-03_002.xad

Created: 12/3/2012 5:06:14 PM
 Modified: 12/3/2012 5:38:59 PM

Electrophoresis File Run Summary (Chip Summary)

Sample Name	Sample Comment	Rest. Digest	Status	Observation	Result Label	Result Color
NP2 Soni 1:6		<input type="checkbox"/>	✓			
EL1 Soni 1:5		<input type="checkbox"/>	✓			
BC DN 2 Soni 1:8		<input type="checkbox"/>	✓			
DEL11 Soni 1:12		<input type="checkbox"/>	✓			
PA7 Soni 1:10		<input type="checkbox"/>	✓			
BC DN 1 Soni 1:3		<input type="checkbox"/>	✓			
#1		<input type="checkbox"/>	✓			
#4		<input type="checkbox"/>	✓			
sample 9		<input type="checkbox"/>				
sample 10		<input type="checkbox"/>				
sample 11		<input type="checkbox"/>				
Ladder		<input type="checkbox"/>	✓			
Chip Lot #				Reagent Kit Lot #		

Chip Comments :

Assay Class: High Sensitivity DNA Assay
Data Path: C:\...ents and Settings\Bioanalyzer\2012-12-03\2012-12-03_002.xad

Created: 12/3/2012 5:06:14 PM
Modified: 12/3/2012 5:38:59 PM

Electrophoresis Assay Details

General Analysis Settings

Number of Available Sample and Ladder Wells (Max.) : 12
Minimum Visible Range [s] : 32
Maximum Visible Range [s] : 138
Start Analysis Time Range [s] : 33
End Analysis Time Range [s] : 137.5
Ladder Concentration [pg/μl] : 1950
Uses Standard Area for Ladder Fragments
Lower Marker Concentration [pg/μl] : 125
Upper Marker Concentration [pg/μl] : 75
Used Upper Marker for Quantitation
Standard Curve Fit is Point to Point
Show Data Aligned to Lower and Upper Marker

Integrator Settings

Integration Start Time [s] : 33.05
Integration End Time [s] : 137
Slope Threshold : 0.8
Height Threshold [FU] : 5
Area Threshold : 0.1
Width Threshold [s] : 0.6
Baseline Plateau [s] : 0.5

Filter Settings

Filter Width [s] : 0.5
Polynomial Order : 4

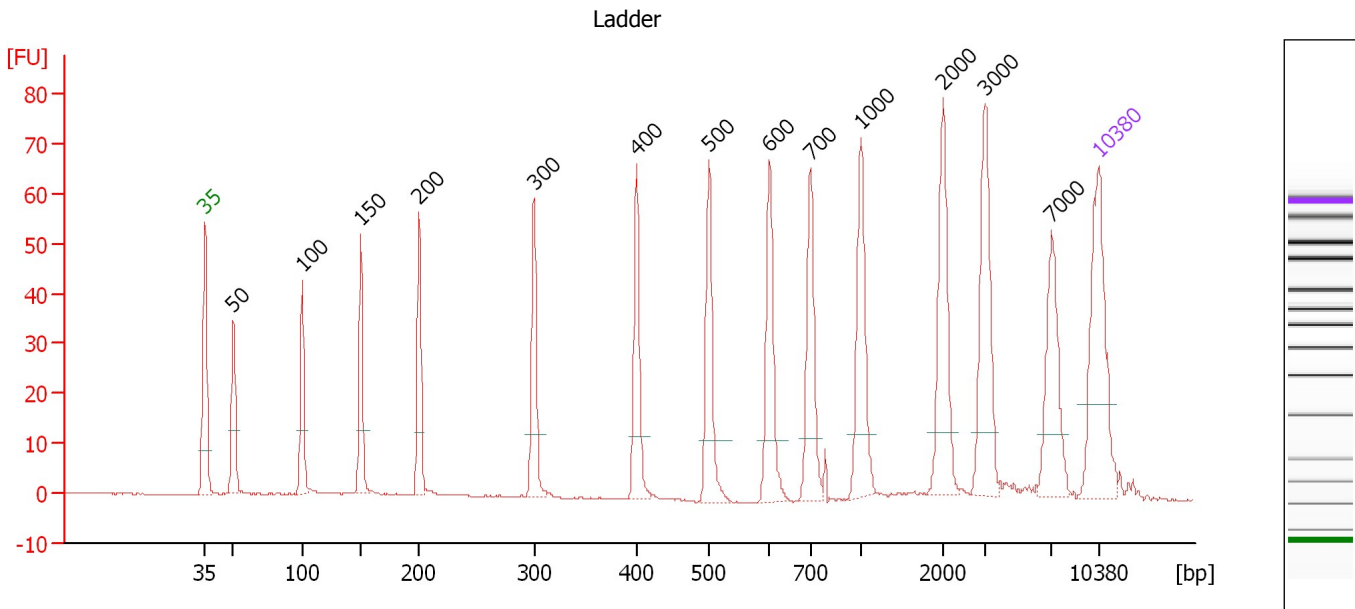
Ladder

Ladder Peak	Size	Area
1	35	160
2	50	210
3	100	208
4	150	221
5	200	242
6	300	270
7	400	305
8	500	306
9	600	336
10	700	321
11	1000	366
12	2000	413
13	3000	411
14	7000	400
15	10380	214

Assay Class: High Sensitivity DNA Assay
 Data Path: C:\...ents and Settings\Bioanalyzer\2012-12-03\2012-12-03_002.xad

Created: 12/3/2012 5:06:14 PM
 Modified: 12/3/2012 5:38:59 PM

Electropherogram Summary



Overall Results for Ladder

Noise: 0.1

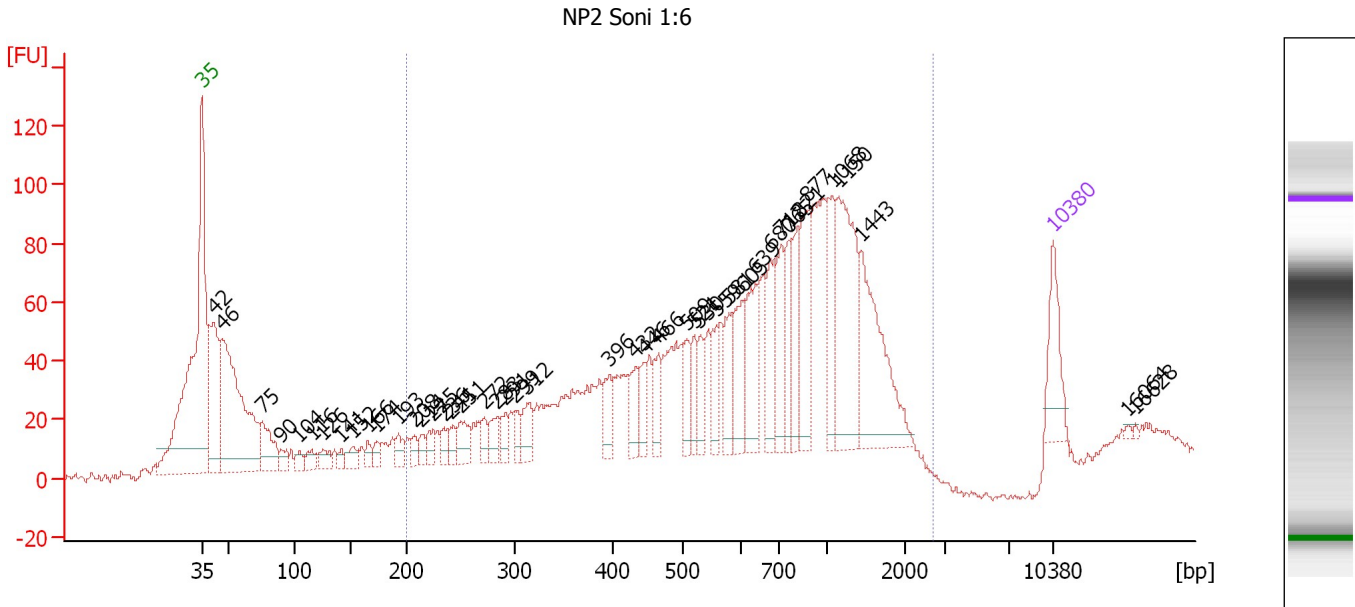
Peak table for Ladder

Peak	Size [bp]	Conc. [pg/µl]	Molarity [pmol/l]	Observations
1	35	125.00	5,411.3	Lower Marker
2	50	150.00	4,545.5	Ladder Peak
3	100	150.00	2,272.7	Ladder Peak
4	150	150.00	1,515.2	Ladder Peak
5	200	150.00	1,136.4	Ladder Peak
6	300	150.00	757.6	Ladder Peak
7	400	150.00	568.2	Ladder Peak
8	500	150.00	454.5	Ladder Peak
9	600	150.00	378.8	Ladder Peak
10	700	150.00	324.7	Ladder Peak
11	1,000	150.00	227.3	Ladder Peak
12	2,000	150.00	113.6	Ladder Peak
13	3,000	150.00	75.8	Ladder Peak
14	7,000	150.00	32.5	Ladder Peak
15	10,380	75.00	10.9	Upper Marker

Assay Class: High Sensitivity DNA Assay
 Data Path: C:\...ents and Settings\Bioanalyzer\2012-12-03\2012-12-03_002.xad

Created: 12/3/2012 5:06:14 PM
 Modified: 12/3/2012 5:38:59 PM

Electropherogram Summary Continued ...



Overall Results for sample 1 : NP2 Soni 1:6

Number of peaks found: 44 Corr. Area 1: 1,926.0
 Noise: 1.5

Peak table for sample 1 : NP2 Soni 1:6

Peak	Size [bp]	Conc. [pg/μl]	Molarity [pmol/l]	Observations
1	35	125.00	5,411.3	Lower Marker
2	42	289.53	10,561.7	
3	46	591.74	19,370.0	
4	75	112.28	2,255.5	
5	90	28.15	475.8	
6	104	22.91	333.5	
7	116	26.41	344.9	
8	126	30.31	365.7	
9	141	14.71	157.8	
10	152	32.75	326.9	
11	166	20.12	183.9	
12	174	20.91	182.1	
13	193	29.27	229.5	
14	208	20.27	147.5	
15	214	23.61	167.1	
16	225	30.60	206.3	
17	236	25.22	162.0	
18	241	29.43	184.8	
19	251	52.66	317.9	
20	272	32.22	179.5	
21	283	41.86	224.1	
22	291	33.62	175.2	
23	299	28.46	144.2	
24	312	55.22	268.1	
25	396	47.39	181.2	
26	432	58.62	205.7	

Assay Class: High Sensitivity DNA Assay
 Data Path: C:\...ents and Settings\Bioanalyzer\2012-12-03\2012-12-03_002.xad


Created: 12/3/2012 5:06:14 PM
 Modified: 12/3/2012 5:38:59 PM

Electropherogram Summary Continued ...

... Peak table for sample 1 : NP2 Soni 1:6

Peak	Size [bp]	Conc. [pg/µl]	Molarity [pmol/l]	Observations
27	446	40.35	137.2	
28	466	54.77	178.2	
29	509	50.24	149.6	
30	521	46.47	135.2	
31	530	46.37	132.6	
32	559	54.96	148.9	
33	581	65.72	171.5	
34	605	97.13	243.1	
35	639	112.12	266.0	
36	680	82.54	183.9	
37	712	104.16	221.8	
38	765	72.35	143.4	
39	821	90.31	166.7	
40	877	118.12	204.0	
41	1,068	98.49	139.7	
42	1,150	231.39	304.9	
43	1,443	208.93	219.4	
44	10,380	75.00	10.9	Upper Marker
45	16,064	0.00	0.0	
46	16,628	0.00	0.0	

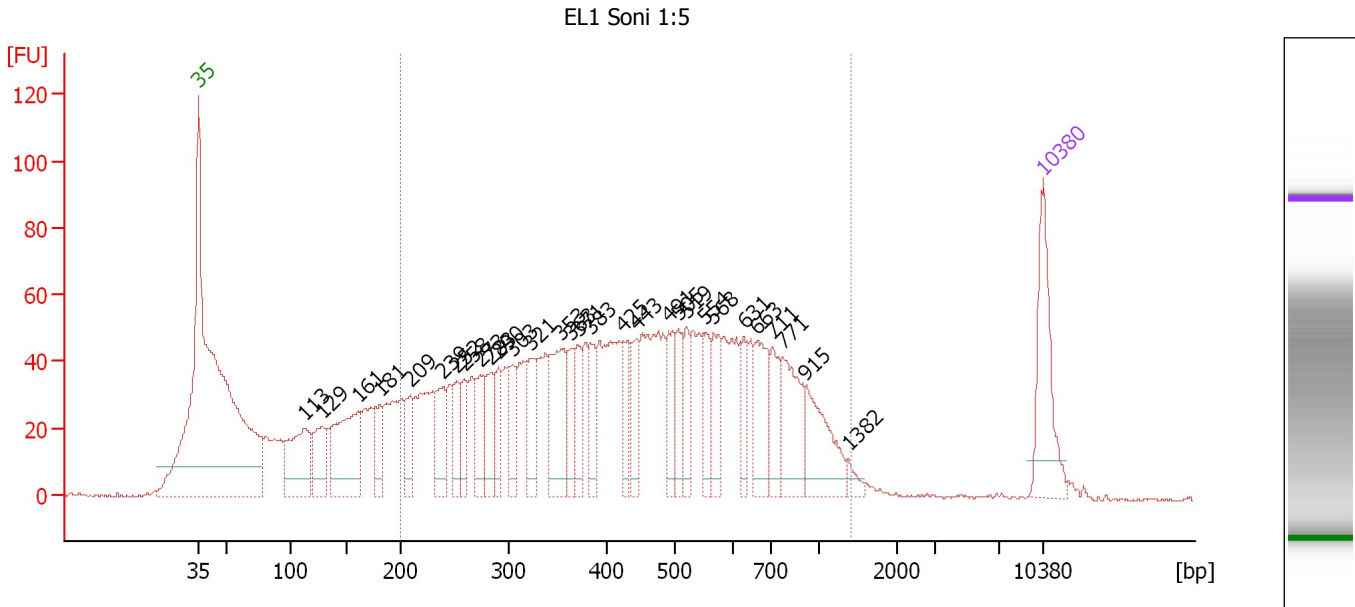
Region table for sample 1 : NP2 Soni 1:6

From [bp]	To [bp]	Average Size [bp]	Molarity [pmol/l]	Conc. [pg/µl]	Corr. Area	% of Total	Size distribution in CV [%]	Color
200	2,704	766	9,161.3	3,100.87	1,926.0	78	53.7	

Assay Class: High Sensitivity DNA Assay
 Data Path: C:\...ents and Settings\Bioanalyzer\2012-12-03\2012-12-03_002.xad

Created: 12/3/2012 5:06:14 PM
 Modified: 12/3/2012 5:38:59 PM

Electropherogram Summary Continued ...



Overall Results for sample 2 : EL1 Soni 1:5

Number of peaks found: 30 Corr. Area 1: 2,000.0
 Noise: 0.5

Peak table for sample 2 : EL1 Soni 1:5

Peak	Size [bp]	Conc. [pg/μl]	Molarity [pmol/l]	Observations
1	35	125.00	5,411.3	Lower Marker
2	113	119.15	1,604.7	
3	129	61.42	722.2	
4	161	150.23	1,412.2	
5	181	42.90	358.9	
6	209	46.12	334.6	
7	239	60.93	386.7	
8	252	38.54	231.8	
9	258	38.41	225.7	
10	273	47.50	263.6	
11	283	47.36	253.8	
12	290	38.95	203.7	
13	303	47.97	240.1	
14	321	54.31	256.4	
15	353	99.99	429.4	
16	363	38.15	159.3	
17	371	40.78	166.5	
18	383	40.09	158.5	
19	425	38.81	138.3	
20	443	41.30	141.2	
21	491	44.23	136.6	
22	505	41.28	123.7	
23	519	35.01	102.1	
24	554	37.66	103.0	
25	568	46.14	123.1	
26	631	31.69	76.1	

Assay Class: High Sensitivity DNA Assay
 Data Path: C:\...ents and Settings\Bioanalyzer\2012-12-03\2012-12-03_002.xad


Created: 12/3/2012 5:06:14 PM
 Modified: 12/3/2012 5:38:59 PM

Electropherogram Summary Continued ...

... Peak table for sample 2 : EL1 Soni 1:5

Peak	Size [bp]	Conc. [pg/μl]	Molarity [pmol/l]	Observations
27	663	63.76	145.7	
28	711	41.40	88.2	
29	771	76.87	151.0	
30	915	74.33	123.1	
31	1,382	9.18	10.1	
32	10,380	75.00	10.9	Upper Marker

Region table for sample 2 : EL1 Soni 1:5

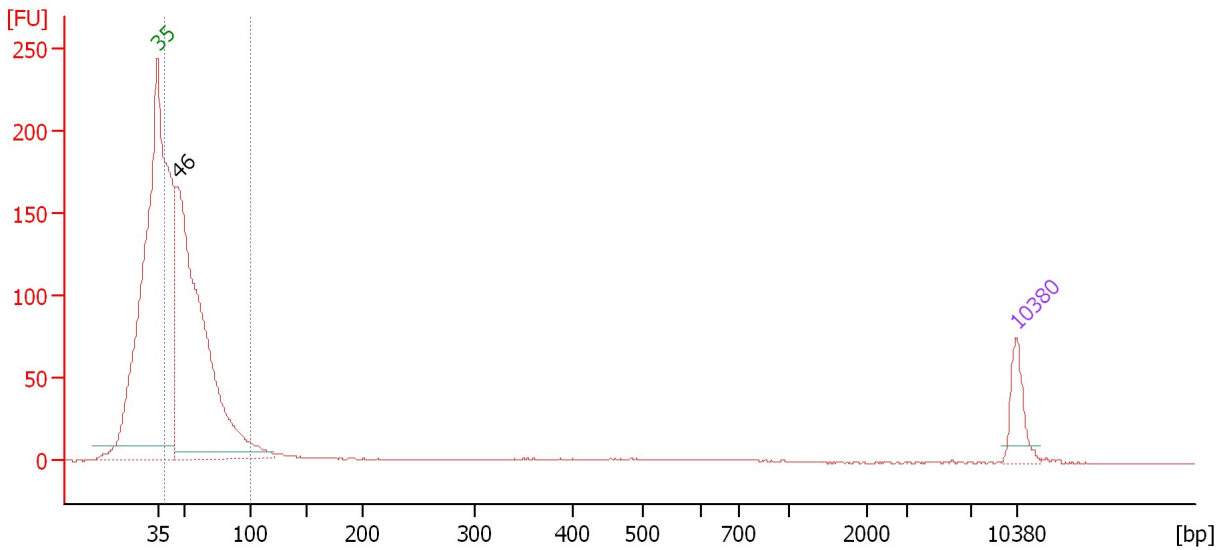
From [bp]	To [bp]	Average Size [bp]	Molarity [pmol/l]	Conc. [pg/μl]	Corr. Area	% of Total	Size distribution in CV [%]	Color
200	1,408	482	8,489.9	2,097.07	2,000.0	80	45.0	

Assay Class: High Sensitivity DNA Assay
 Data Path: C:\...ents and Settings\Bioanalyzer\2012-12-03\2012-12-03_002.xad

Created: 12/3/2012 5:06:14 PM
 Modified: 12/3/2012 5:38:59 PM

Electropherogram Summary Continued ...

BC DN 2 Soni 1:8



Overall Results for sample 3 : BC DN 2 Soni 1:8

Number of peaks found: 1 Corr. Area 1: 1,000.7
 Noise: 0.2

Peak table for sample 3 : BC DN 2 Soni 1:8

Peak	Size [bp]	Conc. [pg/μl]	Molarity [pmol/l]	Observations
1	35	125.00	5,411.3	Lower Marker
2	46	1,921.69	63,272.7	
3	10,380	75.00	10.9	Upper Marker

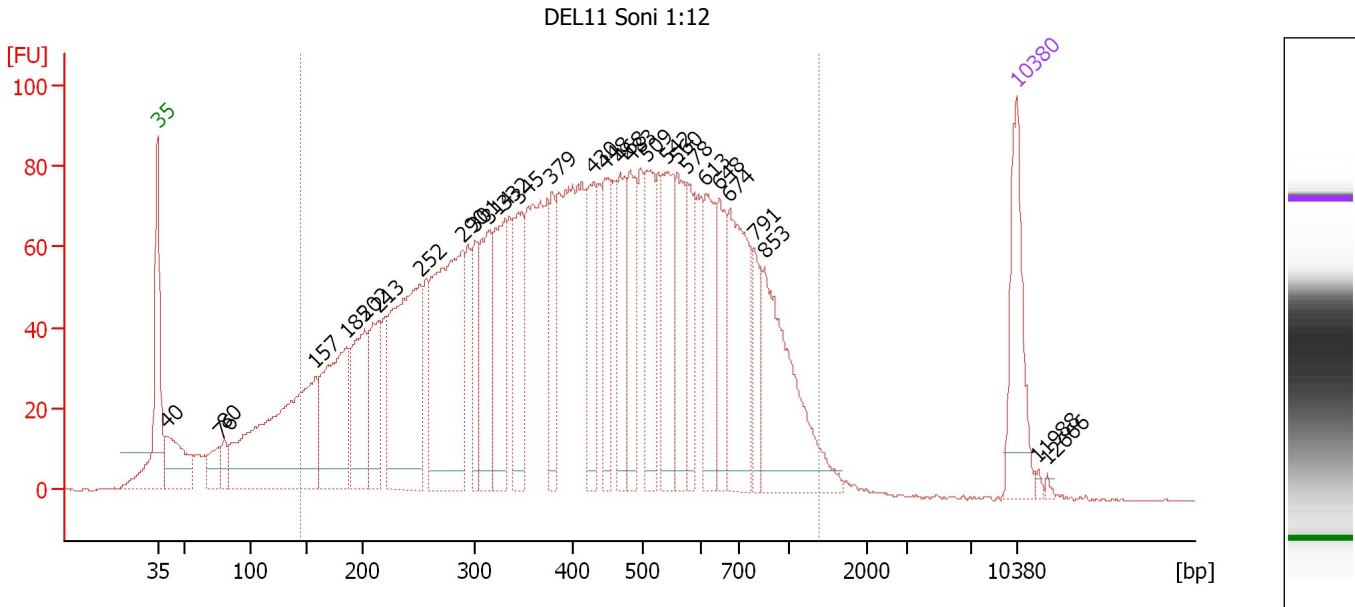
Region table for sample 3 : BC DN 2 Soni 1:8

From [bp]	To [bp]	Average Size [bp]	Molarity [pmol/l]	Conc. [pg/μl]	Corr. Area	% of Total	Size distribution in CV [%]	Color
38	100	55	49,817.4	1,856.70	1,000.7	87	25.5	Blue

Assay Class: High Sensitivity DNA Assay
 Data Path: C:\...ents and Settings\Bioanalyzer\2012-12-03\2012-12-03_002.xad

Created: 12/3/2012 5:06:14 PM
 Modified: 12/3/2012 5:38:59 PM

Electropherogram Summary Continued ...



Overall Results for sample 4 : DEL11 Soni 1:12

Number of peaks found: 29 Corr. Area 1: 3,415.6
 Noise: 0.2

Peak table for sample 4 : DEL11 Soni 1:12

Peak	Size [bp]	Conc. [pg/μl]	Molarity [pmol/l]	Observations
1	35	125.00	5,411.3	Lower Marker
2	40	93.44	3,568.0	
3	76	35.49	703.5	
4	80	22.34	423.9	
5	157	354.59	3,420.1	
6	185	186.68	1,525.7	
7	202	123.91	931.3	
8	213	89.75	637.5	
9	252	265.61	1,599.6	
10	290	289.06	1,511.0	
11	301	63.48	319.3	
12	314	117.18	564.7	
13	332	116.71	533.3	
14	345	103.08	452.2	
15	379	67.76	271.1	
16	430	89.04	313.8	
17	448	75.33	254.9	
18	468	84.04	272.1	
19	483	83.55	262.4	
20	509	95.93	285.5	
21	542	99.53	278.2	
22	560	78.32	211.8	
23	578	54.66	143.3	
24	613	80.59	199.2	
25	648	71.42	167.0	
26	674	142.47	320.3	

Assay Class: High Sensitivity DNA Assay
 Data Path: C:\...ents and Settings\Bioanalyzer\2012-12-03\2012-12-03_002.xad

Created: 12/3/2012 5:06:14 PM
 Modified: 12/3/2012 5:38:59 PM

Electropherogram Summary Continued ...

... Peak table for sample 4 : DEL11 Soni 1:12

Peak	Size [bp]	Conc. [pg/μl]	Molarity [pmol/l]	Observations
27	791	38.91	74.6	
28	853	166.90	296.4	
29	10,380	75.00	10.9	Upper Marker
30	11,988	0.00	0.0	
31	12,666	0.00	0.0	

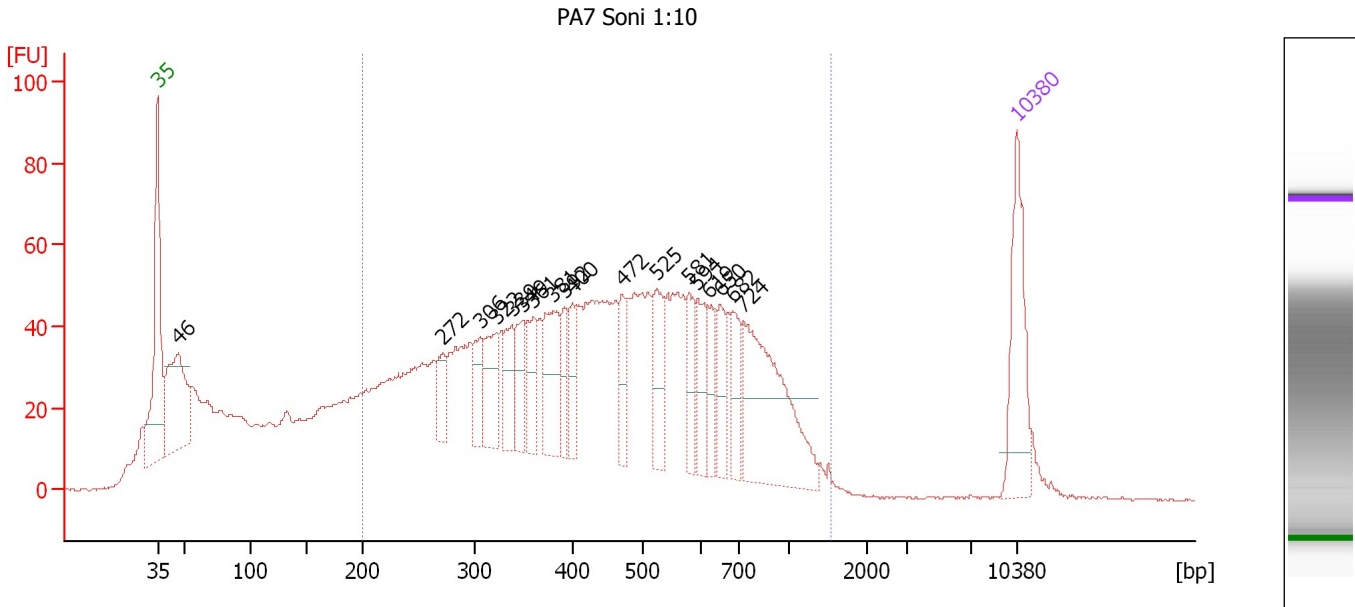
Region table for sample 4 : DEL11 Soni 1:12

From [bp]	To [bp]	Average Size [bp]	Molarity [pmol/l]	Conc. [pg/μl]	Corr. Area	% of Total	Size distribution in CV [%]	Color
144	1,381	456	16,780.9	3,697.47	3,415.6	90	46.4	

Assay Class: High Sensitivity DNA Assay
 Data Path: C:\...ents and Settings\Bioanalyzer\2012-12-03\2012-12-03_002.xad

Created: 12/3/2012 5:06:14 PM
 Modified: 12/3/2012 5:38:59 PM

Electropherogram Summary Continued ...



Setpoint Deviations for sample 5 : PA7 Soni 1:10

Height Threshold [FU] : 20

Overall Results for sample 5 : PA7 Soni 1:10

Number of peaks found: 18 Corr. Area 1: 1,951.2
 Noise: 0.2

Peak table for sample 5 : PA7 Soni 1:10

Peak	Size [bp]	Conc. [pg/μl]	Molarity [pmol/l]	Observations
1	35	125.00	5,411.3	Lower Marker
2	46	162.93	5,331.5	
3	272	34.48	192.3	
4	306	39.73	196.6	
5	322	58.35	274.2	
6	339	46.70	209.0	
7	349	45.66	198.3	
8	361	43.77	183.9	
9	381	76.46	304.2	
10	392	32.56	125.9	
11	400	33.04	125.2	
12	472	36.74	118.1	
13	525	54.71	157.8	
14	581	38.32	100.0	
15	594	45.75	116.6	
16	619	31.38	76.8	
17	650	35.85	83.5	
18	682	41.49	92.1	
19	724	176.65	369.8	
20	10,380	75.00	10.9	Upper Marker

Assay Class: High Sensitivity DNA Assay
Data Path: C:\...ents and Settings\Bioanalyzer\2012-12-03\2012-12-03_002.xad

Created: 12/3/2012 5:06:14 PM
Modified: 12/3/2012 5:38:59 PM

Electropherogram Summary Continued ...

... Region table for sample 5 : PA7 Soni 1:10

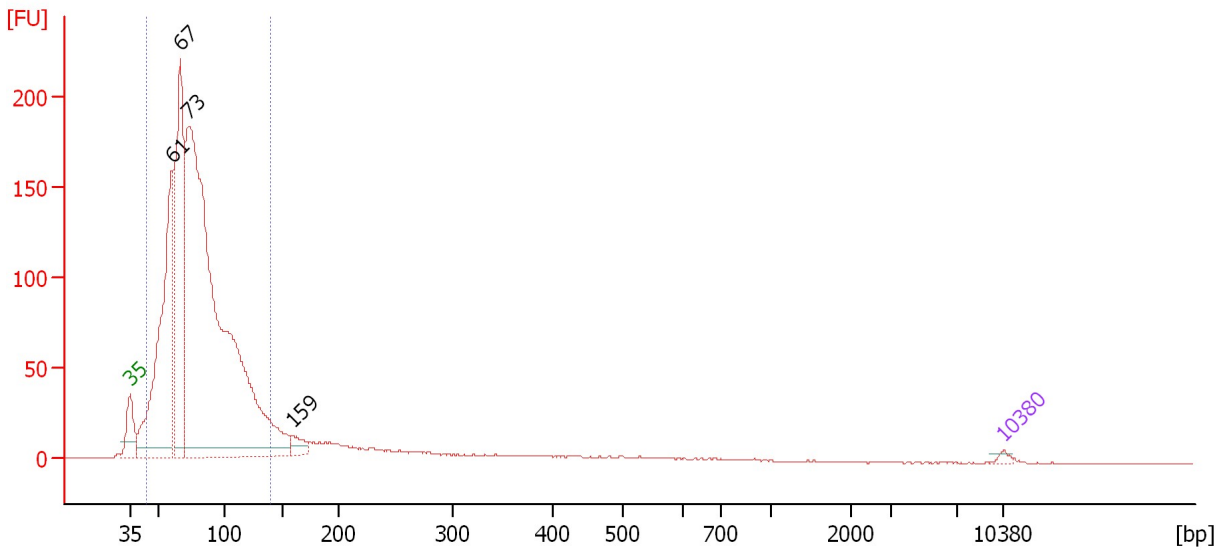
From [bp]	To [bp]	Average Size [bp]	Molarity [pmol/l]	Conc. [pg/μl]	Corr. Area	% of Total	Size distribution in CV [%]	Color
200	1,549	487	8,693.1	2,175.17	1,951.2	71	45.3	■

Assay Class: High Sensitivity DNA Assay
 Data Path: C:\...ents and Settings\Bioanalyzer\2012-12-03\2012-12-03_002.xad

Created: 12/3/2012 5:06:14 PM
 Modified: 12/3/2012 5:38:59 PM

Electropherogram Summary Continued ...

BC DN 1 Soni 1:3



Overall Results for sample 6 : BC DN 1 Soni 1:3

Number of peaks found: 4 Corr. Area 1: 2,442.4
 Noise: 0.1

Peak table for sample 6 : BC DN 1 Soni 1:3

Peak	Size [bp]	Conc. [pg/μl]	Molarity [pmol/l]	Observations
1	35	125.00	5,411.3	Lower Marker
2	61	11,798.34	294,166.6	
3	67	10,346.13	234,970.7	
4	73	35,728.84	740,999.9	
5	159	604.28	5,770.8	
6	10,380	75.00	10.9	Upper Marker

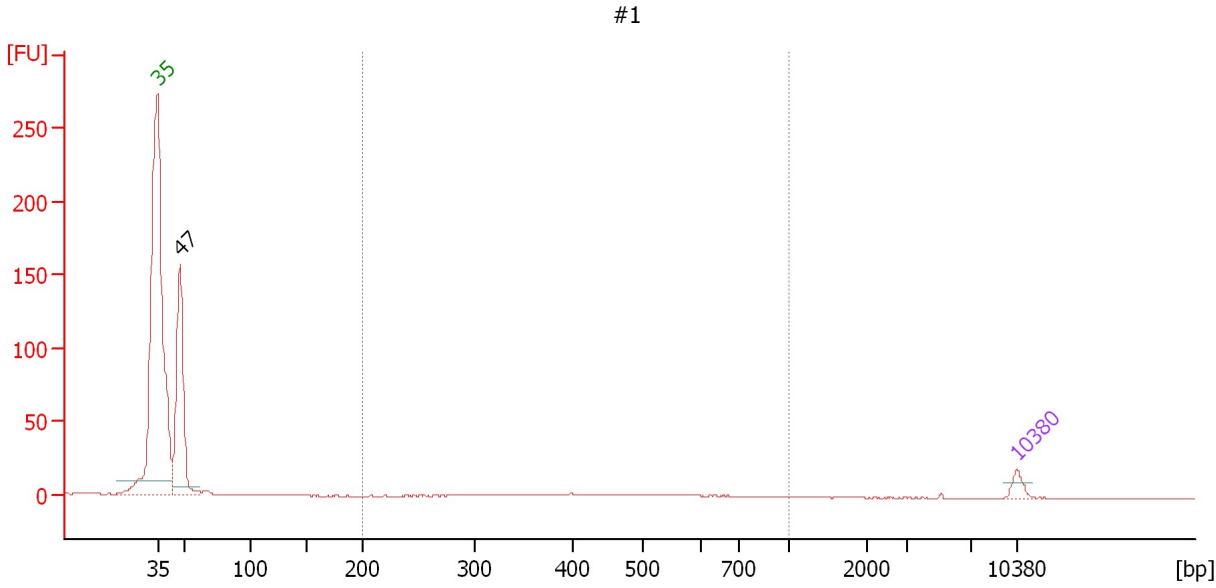
Region table for sample 6 : BC DN 1 Soni 1:3

From [bp]	To [bp]	Average Size [bp]	Molarity [pmol/l]	Conc. [pg/μl]	Corr. Area	% of Total	Size distribution in CV [%]	Color
44	141	80	1,101,796.4	55,404.46	2,442.4	88	26.4	Blue

Assay Class: High Sensitivity DNA Assay
 Data Path: C:\...ents and Settings\Bioanalyzer\2012-12-03\2012-12-03_002.xad

Created: 12/3/2012 5:06:14 PM
 Modified: 12/3/2012 5:38:59 PM

Electropherogram Summary Continued ...



Overall Results for sample 7 : #1

Number of peaks found: 1 Corr. Area 1: 31.8
 Noise: 0.1

Peak table for sample 7 : #1

Peak	Size [bp]	Conc. [pg/μl]	Molarity [pmol/l]	Observations
1	35	125.00	5,411.3	Lower Marker
2	47	2,227.21	71,223.4	
3	10,380	75.00	10.9	Upper Marker

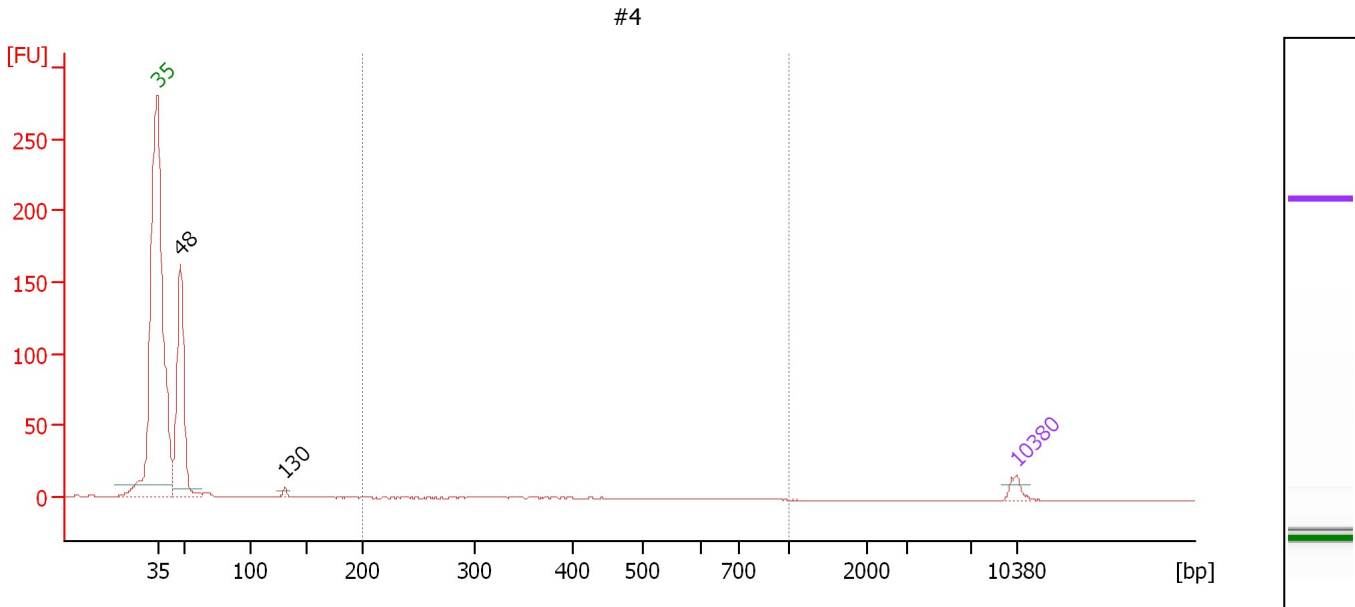
Region table for sample 7 : #1

From [bp]	To [bp]	Average Size [bp]	Molarity [pmol/l]	Conc. [pg/μl]	Corr. Area	% of Total	Size distribution in CV [%]	Color
200	1,000	487	651.1	185.58	31.8	10	30.7	Blue

Assay Class: High Sensitivity DNA Assay
 Data Path: C:\...ents and Settings\Bioanalyzer\2012-12-03\2012-12-03_002.xad

Created: 12/3/2012 5:06:14 PM
 Modified: 12/3/2012 5:38:59 PM

Electropherogram Summary Continued ...



Overall Results for sample 8 : #4

Number of peaks found: 2 Corr. Area 1: 17.9
 Noise: 0.1

Peak table for sample 8 : #4

Peak	Size [bp]	Conc. [pg/μl]	Molarity [pmol/l]	Observations
1	35	125.00	5,411.3	Lower Marker
2	48	2,312.74	73,532.5	
3	130	50.84	590.9	
4	10,380	75.00	10.9	Upper Marker

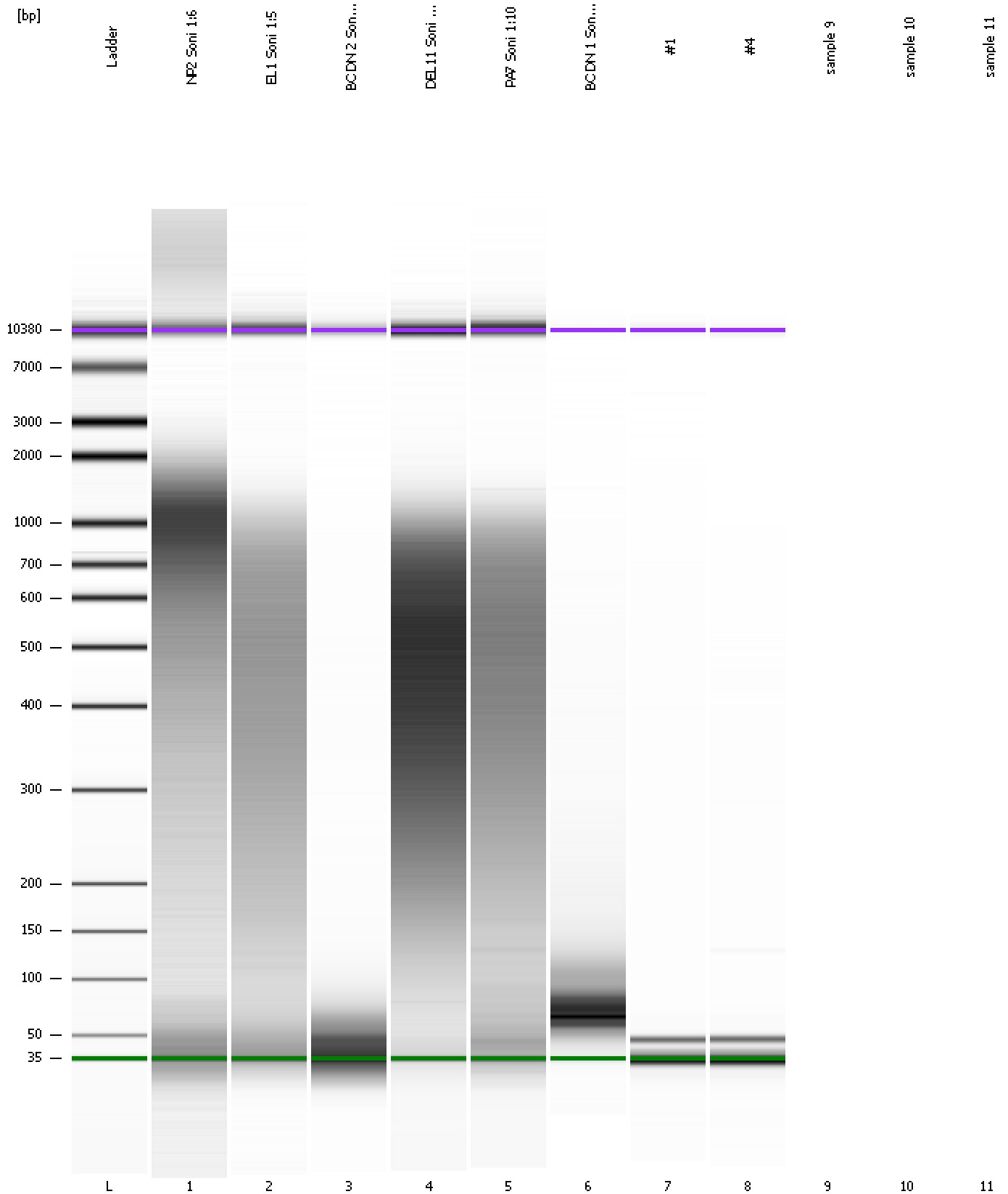
Region table for sample 8 : #4

From [bp]	To [bp]	Average Size [bp]	Molarity [pmol/l]	Conc. [pg/μl]	Corr. Area	% of Total	Size distribution in CV [%]	Color
200	1,000	396	496.6	115.64	17.9	6	28.7	Blue

Assay Class: High Sensitivity DNA Assay
Data Path: C:\...ents and Settings\Bioanalyzer\2012-12-03\2012-12-03_002.xad

Created: 12/3/2012 5:06:14 PM
Modified: 12/3/2012 5:38:59 PM

Gel Image



Assay Class: High Sensitivity DNA Assay
Data Path: C:\...ents and Settings\Bioanalyzer\2012-12-03\2012-12-03_002.xad

Created: 12/3/2012 5:06:14 PM
Modified: 12/3/2012 5:38:59 PM

Invalid Samples

Sample 9 has not been run, no results available.

Sample 10 has not been run, no results available.

Sample 11 has not been run, no results available.

Assay Class: High Sensitivity DNA Assay
 Data Path: C:\...ents and Settings\Bioanalyzer\2012-12-03\2012-12-03_002.xad

Created: 12/3/2012 5:06:14 PM
 Modified: 12/3/2012 5:38:59 PM

Run Logbook

Description	Number	Source	Category	Sub Category	Time	Time Zone	User	Host
Run ended on port 1 (Number of wells acquired: 9)		Instrument	Run		12/3/2012 5:38:56 PM	(GMT --08:00) Pacific Standard Time	UC Davis	D8XSMGH1
Run started on port 1 (File: C:\Documents and Settings\Bioanalyzer\2012-12-03\2012-12-03_002.xad)		Instrument	Run		12/3/2012 5:06:19 PM	(GMT --08:00) Pacific Standard Time	UC Davis	D8XSMGH1
Product Number : G2938B		Instrument	Run		12/3/2012 5:06:19 PM	(GMT --08:00) Pacific Standard Time	UC Davis	D8XSMGH1
Name :		Instrument	Run		12/3/2012 5:06:19 PM	(GMT --08:00) Pacific Standard Time	UC Davis	D8XSMGH1
Vendor : Agilent Technologies		Instrument	Run		12/3/2012 5:06:19 PM	(GMT --08:00) Pacific Standard Time	UC Davis	D8XSMGH1
Serial# : DE13701086		Instrument	Run		12/3/2012 5:06:19 PM	(GMT --08:00) Pacific Standard Time	UC Davis	D8XSMGH1
Firmware : C.01.069		Instrument	Run		12/3/2012 5:06:19 PM	(GMT --08:00) Pacific Standard Time	UC Davis	D8XSMGH1
Cartridge : Electrode		Instrument	Run		12/3/2012 5:06:19 PM	(GMT --08:00) Pacific Standard Time	UC Davis	D8XSMGH1