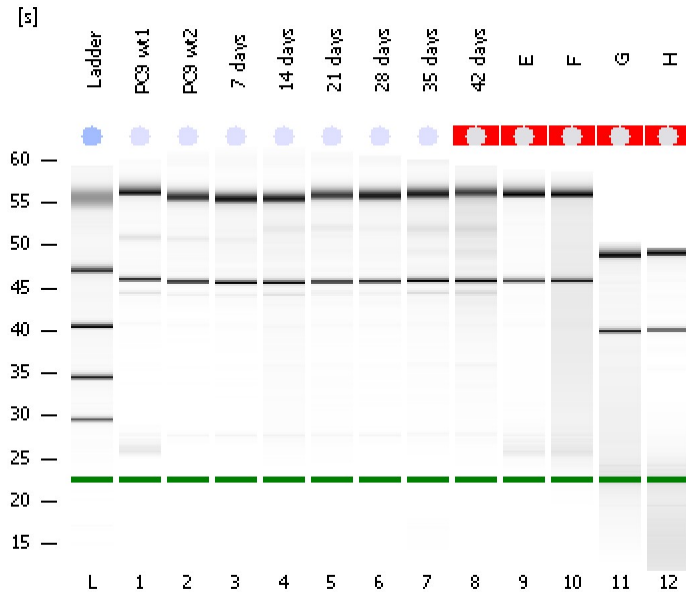


Assay Class: Eukaryote Total RNA Nano
Data Path: C:\...ents and Settings\Bioanalyzer\2012-12-05\2012-12-05_001.xad

Created: 12/5/2012 3:27:30 PM
Modified: 12/5/2012 4:06:09 PM

Electrophoresis File Run Summary



Instrument Information:

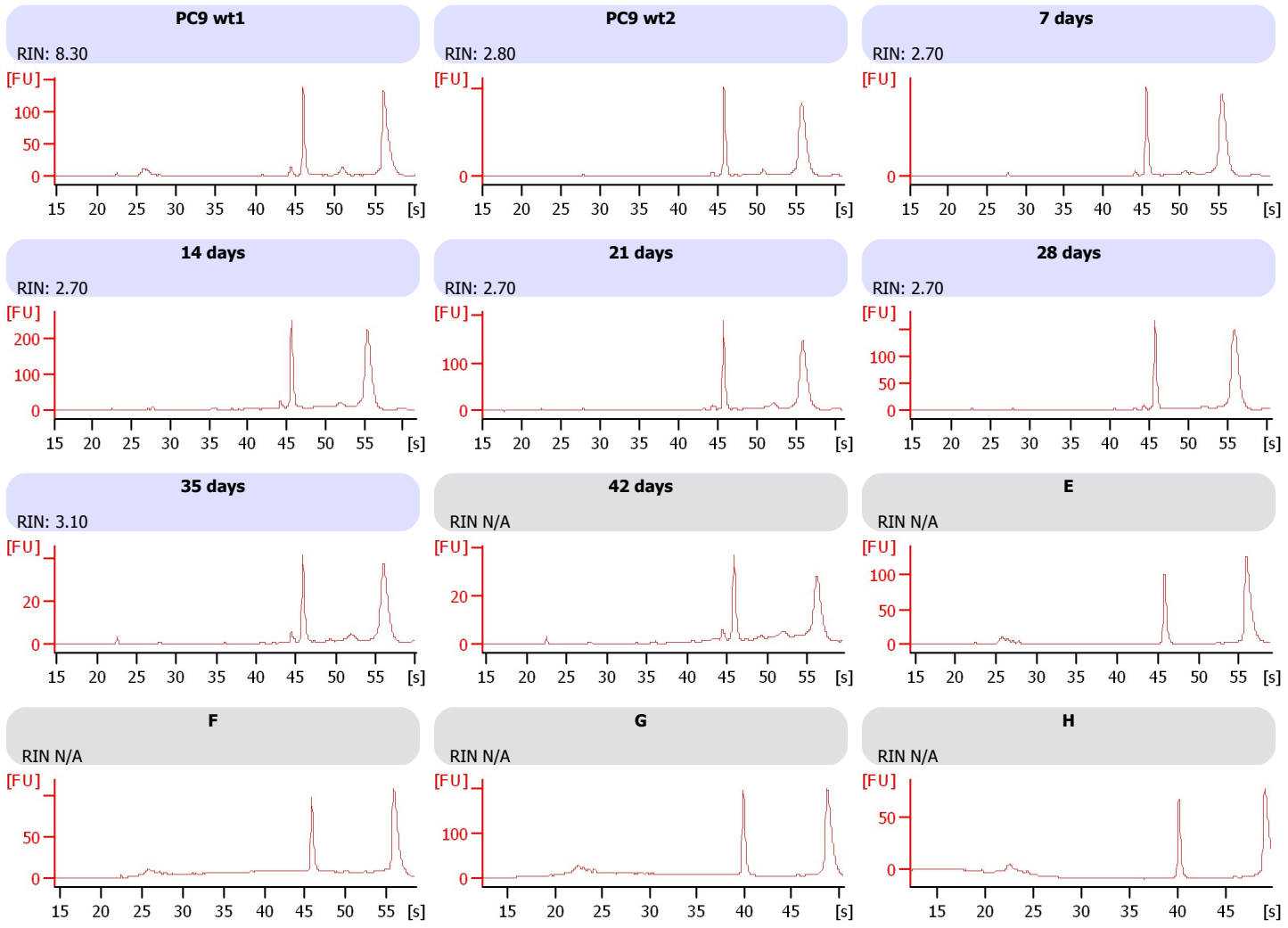
Instrument Name: DE13701086 Firmware: C.01.069
Serial#: DE13701086 Type: G2938B

Assay Information:

Assay Origin Path: C:\Program Files\Agilent\2100 bioanalyzer\2100 expert\assays\RNA\Eukaryote Total RNA Nano Series II.xsy
Assay Class: Eukaryote Total RNA Nano
Version: 2.6
Assay Comments: Total RNA Analysis ng sensitivity (Eukaryote)
© Copyright 2003 - 2009 Agilent Technologies, Inc.

Chip Information:

Chip Lot #:
Reagent Kit Lot #:
Chip Comments:



Assay Class: Eukaryote Total RNA Nano
Data Path: C:\...ents and Settings\Bioanalyzer\2012-12-05\2012-12-05_001.xad

Created: 12/5/2012 3:27:30 PM
Modified: 12/5/2012 4:06:09 PM

Electrophoresis File Run Summary (Chip Summary)

Sample Name	Sample Comment	Status	Result Label	Result Color
PC9 wt1		✓	RIN: 8.30	
PC9 wt2		✓	RIN: 2.80	
7 days		✓	RIN: 2.70	
14 days		✓	RIN: 2.70	
21 days		✓	RIN: 2.70	
28 days		✓	RIN: 2.70	
35 days		✓	RIN: 3.10	
42 days		✓	RIN N/A	
E		✓	RIN N/A	
F		✓	RIN N/A	
G		✓	RIN N/A	
H		✓	RIN N/A	
Ladder		✓	All Other Samples	

Chip Lot #

Reagent Kit Lot #

Chip Comments :

Assay Class: Eukaryote Total RNA Nano
Data Path: C:\...ents and Settings\Bioanalyzer\2012-12-05\2012-12-05_001.xad

Created: 12/5/2012 3:27:30 PM
Modified: 12/5/2012 4:06:09 PM

Electrophoresis Assay Details

General Analysis Settings

Number of Available Sample and Ladder Wells (Max.) : 13
Minimum Visible Range [s] : 17
Maximum Visible Range [s] : 70
Start Analysis Time Range [s] : 19
End Analysis Time Range [s] : 69
Ladder Concentration [ng/ μ l] : 150
Lower Marker Concentration [ng/ μ l] : 0
Upper Marker Concentration [ng/ μ l] : 0
Used Lower Marker for Quantitation
Standard Curve Fit is Logarithmic
Show Data Aligned to Lower Marker

Integrator Settings

Integration Start Time [s] : 19
Integration End Time [s] : 69
Slope Threshold : 0.6
Height Threshold [FU] : 0.5
Area Threshold : 0.2
Width Threshold [s] : 0.5
Baseline Plateau [s] : 6

Filter Settings

Filter Width [s] : 0.5
Polynomial Order : 4

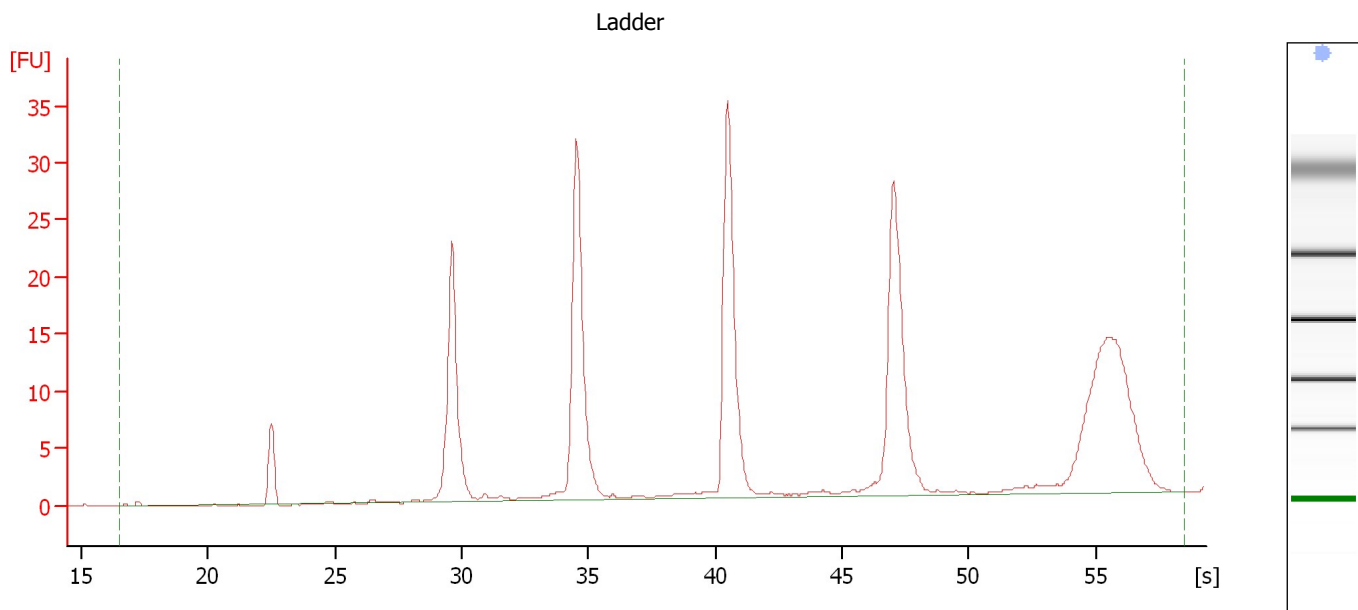
Ladder

Ladder Peak	Size
1	25
2	200
3	500
4	1000
5	2000
6	4000

Assay Class: Eukaryote Total RNA Nano
Data Path: C:\...ents and Settings\Bioanalyzer\2012-12-05\2012-12-05_001.xad

Created: 12/5/2012 3:27:30 PM
Modified: 12/5/2012 4:06:09 PM

Electropherogram Summary



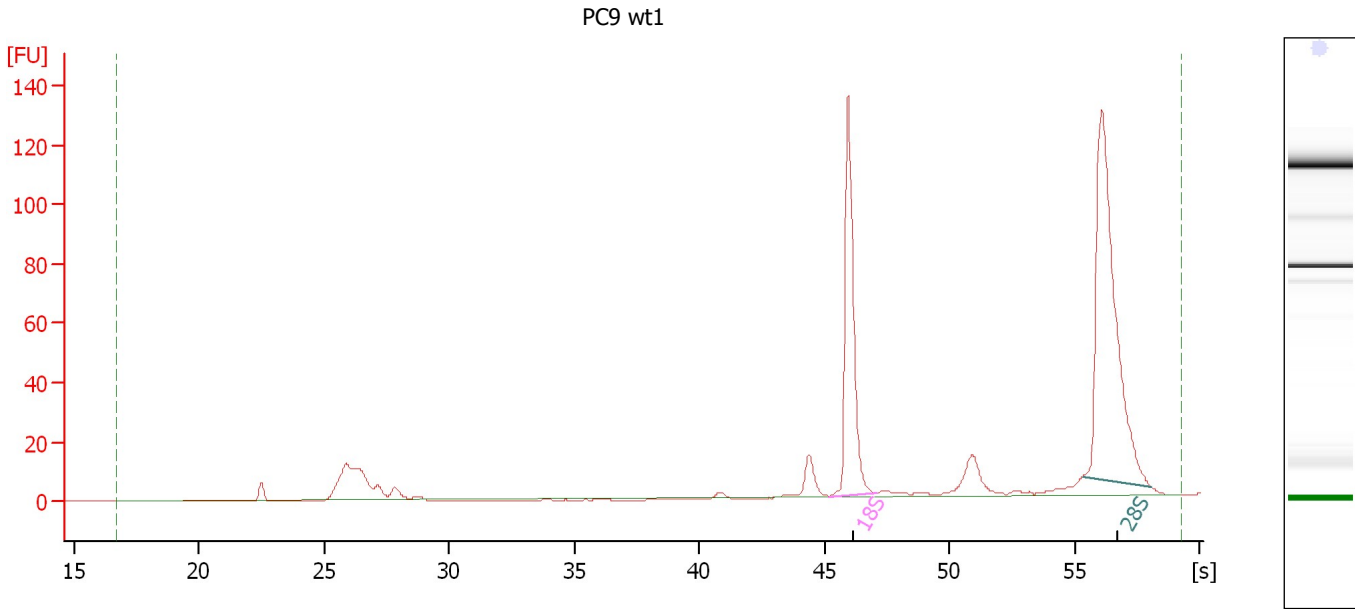
Overall Results for Ladder

RNA Area:	222.2	Result Flagging Color:	
RNA Concentration:	150 ng/μl	Result Flagging Label:	All Other Samples

Assay Class: Eukaryote Total RNA Nano
 Data Path: C:\...ents and Settings\Bioanalyzer\2012-12-05\2012-12-05_001.xad

Created: 12/5/2012 3:27:30 PM
 Modified: 12/5/2012 4:06:09 PM

Electropherogram Summary Continued ...



Overall Results for sample 1 : PC9 wt1

RNA Area:	457.3	RNA Integrity Number (RIN):	8.3 (B.02.08, Anomaly Threshold(s) manually adapted)
RNA Concentration:	309 ng/μl	Result Flagging Color:	
rRNA Ratio [28s / 18s]:	0.0	Result Flagging Label:	RIN: 8.30

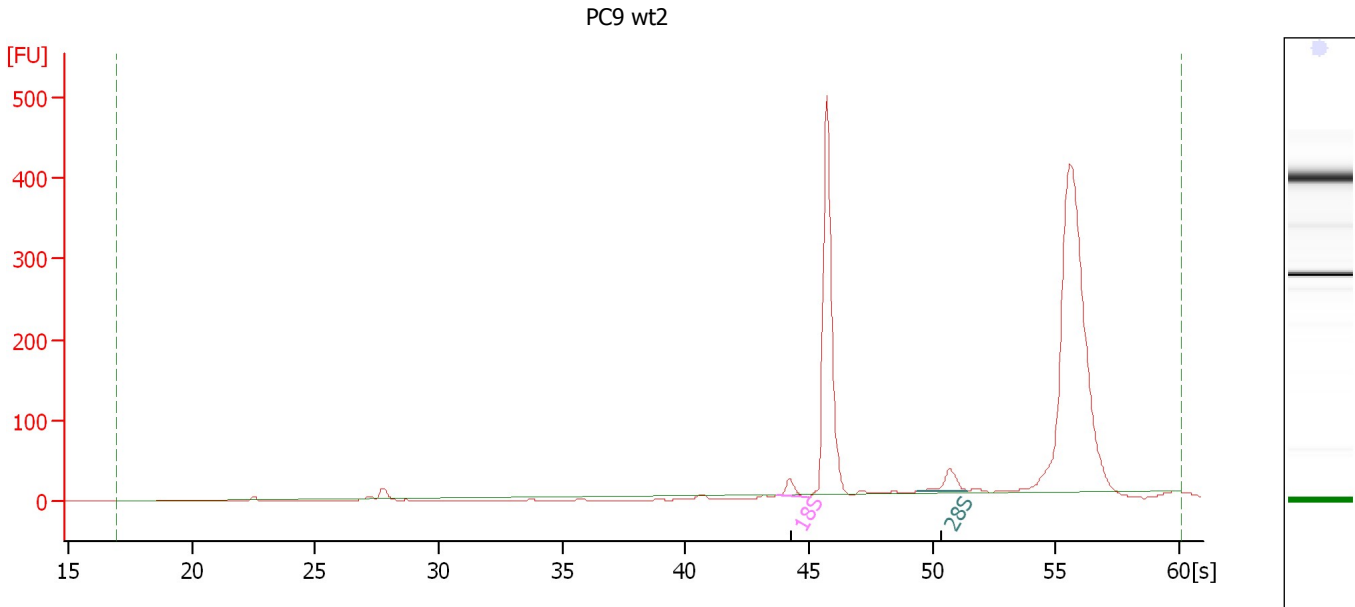
Fragment table for sample 1 : PC9 wt1

Name	Start Time [s]	End Time [s]	Area	% of total Area
18S	45.21	47.10	109.5	23.9
28S	55.32	58.07	189.3	41.4

Assay Class: Eukaryote Total RNA Nano
Data Path: C:\...ents and Settings\Bioanalyzer\2012-12-05\2012-12-05_001.xad

Created: 12/5/2012 3:27:30 PM
Modified: 12/5/2012 4:06:09 PM

Electropherogram Summary Continued ...



Overall Results for sample 2 : PC9 wt2

RNA Area: 1,338.2 RNA Integrity Number (RIN): 2.8 (B.02.08)
RNA Concentration: 903 ng/μl Result Flagging Color:
rRNA Ratio [28s / 18s]: 1.6 Result Flagging Label: RIN: 2.80

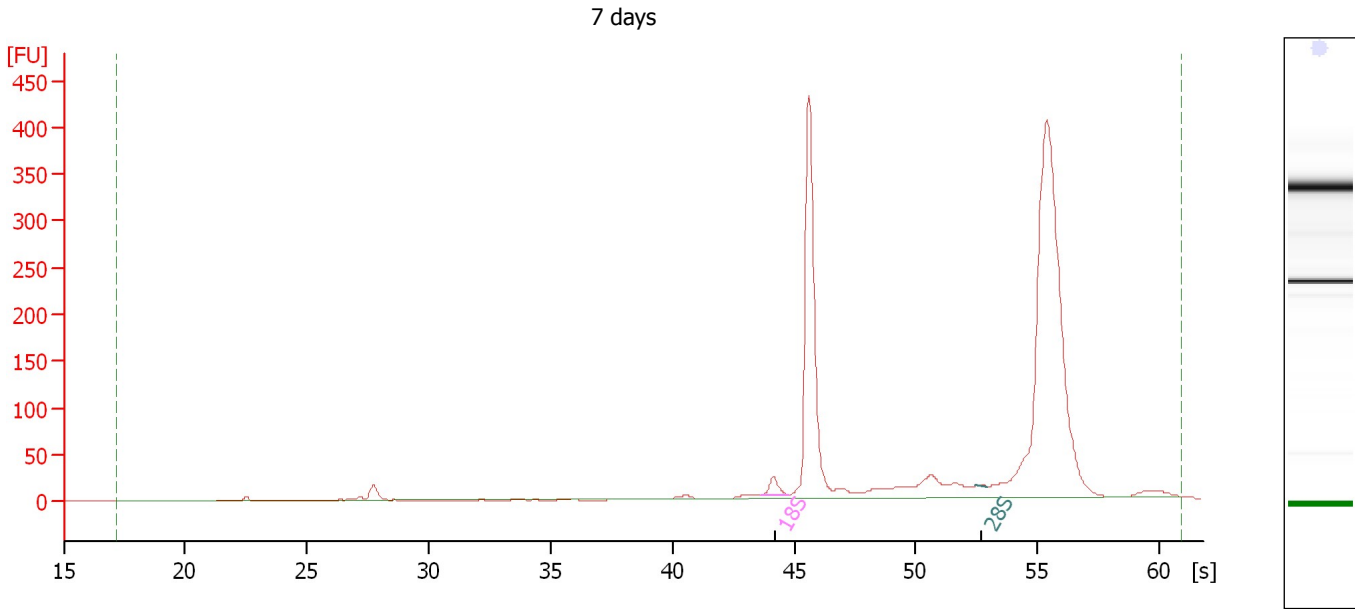
Fragment table for sample 2 : PC9 wt2

Name	Start Time [s]	End Time [s]	Area	% of total Area
18S	43.74	44.91	19.8	1.5
28S	49.35	51.44	30.8	2.3

Assay Class: Eukaryote Total RNA Nano
Data Path: C:\...ents and Settings\Bioanalyzer\2012-12-05\2012-12-05_001.xad

Created: 12/5/2012 3:27:30 PM
Modified: 12/5/2012 4:06:09 PM

Electropherogram Summary Continued ...



Overall Results for sample 3 : 7 days

RNA Area: 1,463.5 RNA Integrity Number (RIN): 2.7 (B.02.08)
RNA Concentration: 988 ng/μl Result Flagging Color:
rRNA Ratio [28s / 18s]: 0.0 Result Flagging Label: RIN: 2.70

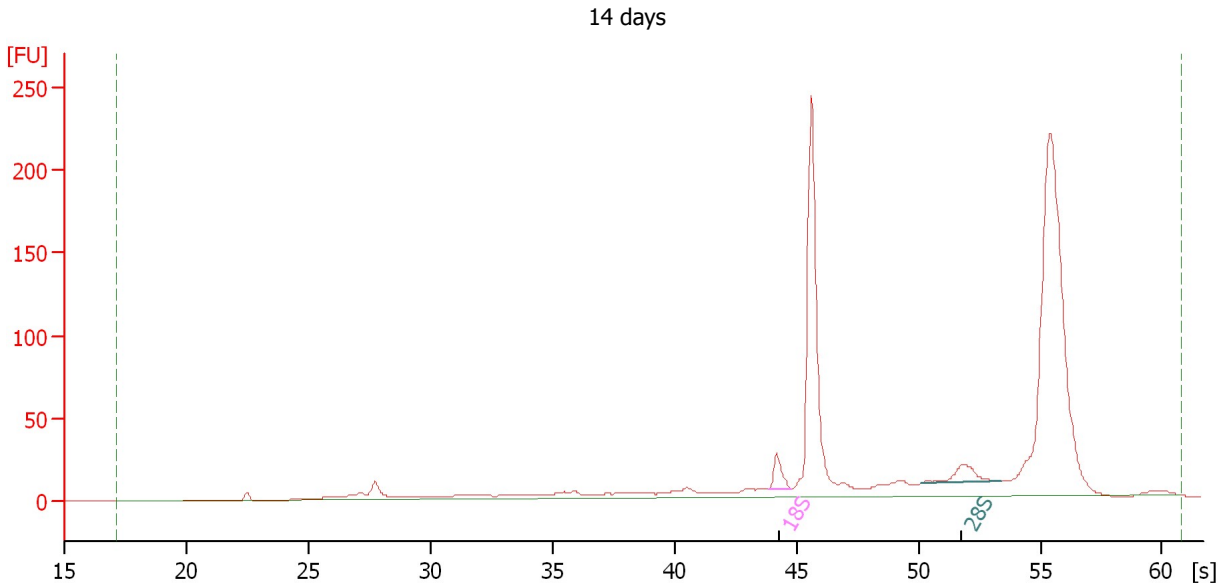
Fragment table for sample 3 : 7 days

Name	Start Time [s]	End Time [s]	Area	% of total Area
18S	43.68	44.78	17.6	1.2
28S	52.46	52.94	0.1	0.0

Assay Class: Eukaryote Total RNA Nano
 Data Path: C:\...ents and Settings\Bioanalyzer\2012-12-05\2012-12-05_001.xad

Created: 12/5/2012 3:27:30 PM
 Modified: 12/5/2012 4:06:09 PM

Electropherogram Summary Continued ...



Overall Results for sample 4 : 14 days

RNA Area:	976.3	RNA Integrity Number (RIN):	2.7 (B.02.08)
RNA Concentration:	659 ng/μl	Result Flagging Color:	
rRNA Ratio [28s / 18s]:	1.2	Result Flagging Label:	RIN: 2.70

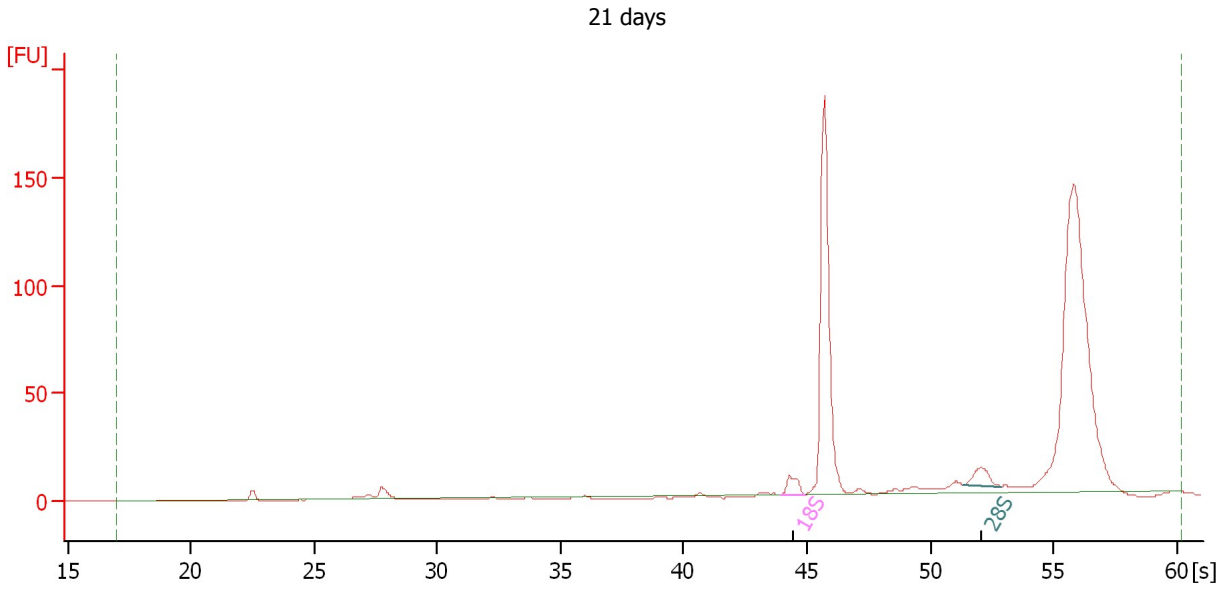
Fragment table for sample 4 : 14 days

Name	Start Time [s]	End Time [s]	Area	% of total Area
18S	43.86	44.82	17.3	1.8
28S	50.15	53.37	20.5	2.1

Assay Class: Eukaryote Total RNA Nano
Data Path: C:\...ents and Settings\Bioanalyzer\2012-12-05\2012-12-05_001.xad

Created: 12/5/2012 3:27:30 PM
Modified: 12/5/2012 4:06:09 PM

Electropherogram Summary Continued ...



Overall Results for sample 5 : 21 days

RNA Area: 516.2 RNA Integrity Number (RIN): 2.7 (B.02.08)
RNA Concentration: 348 ng/μl Result Flagging Color:
rRNA Ratio [28s / 18s]: 1.1 Result Flagging Label: RIN: 2.70

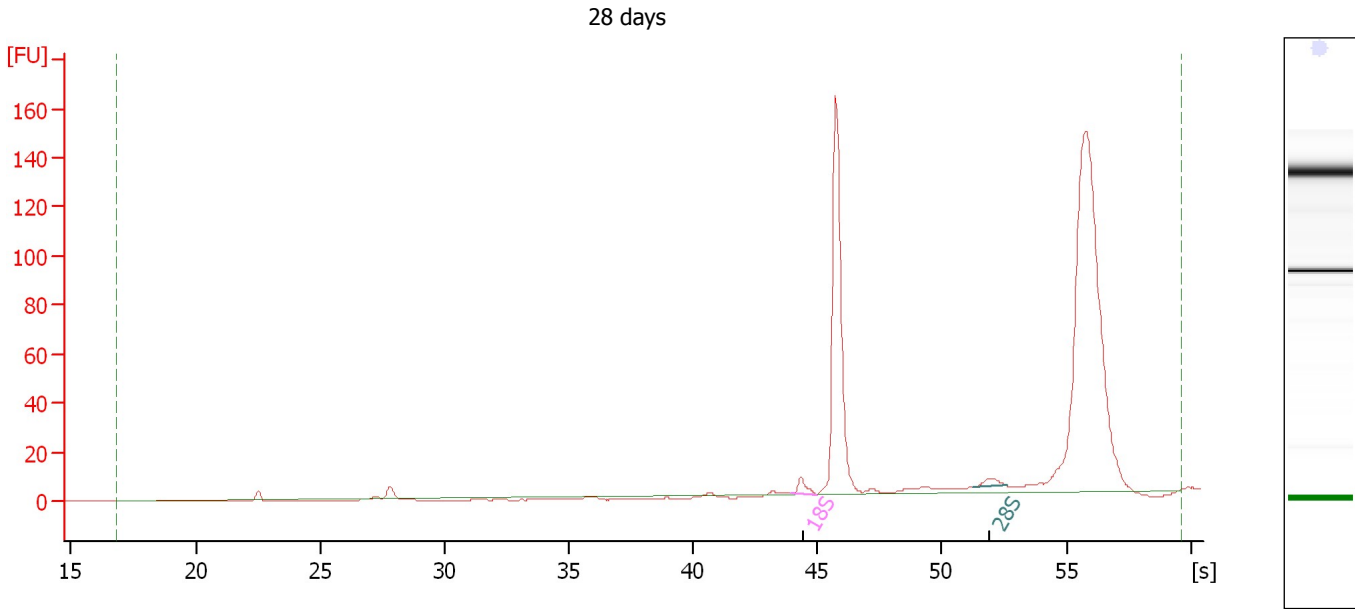
Fragment table for sample 5 : 21 days

Name	Start Time [s]	End Time [s]	Area	% of total Area
18S	43.95	44.91	10.0	1.9
28S	51.37	52.85	10.9	2.1

Assay Class: Eukaryote Total RNA Nano
Data Path: C:\...ents and Settings\Bioanalyzer\2012-12-05\2012-12-05_001.xad

Created: 12/5/2012 3:27:30 PM
Modified: 12/5/2012 4:06:09 PM

Electropherogram Summary Continued ...



Overall Results for sample 6 : 28 days

RNA Area: 479.6 RNA Integrity Number (RIN): 2.7 (B.02.08)
RNA Concentration: 324 ng/μl Result Flagging Color:
rRNA Ratio [28s / 18s]: 0.7 Result Flagging Label: RIN: 2.70

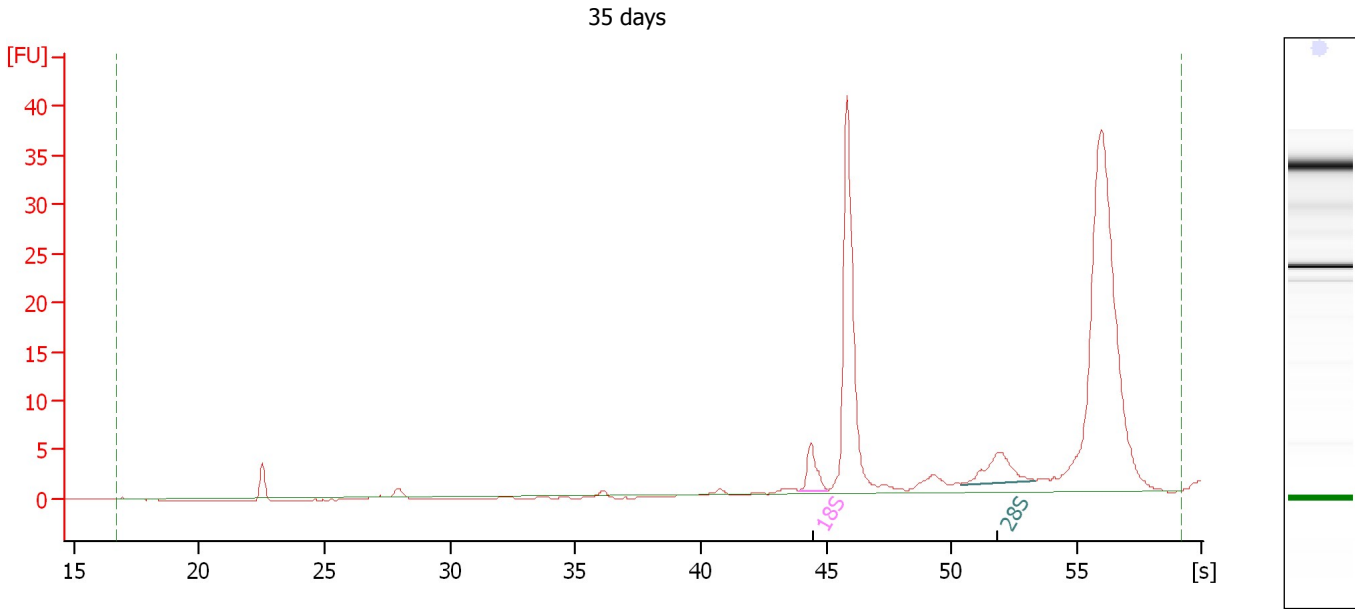
Fragment table for sample 6 : 28 days

Name	Start Time [s]	End Time [s]	Area	% of total Area
18S	43.92	44.96	6.1	1.3
28S	51.22	52.60	4.0	0.8

Assay Class: Eukaryote Total RNA Nano
Data Path: C:\...ents and Settings\Bioanalyzer\2012-12-05\2012-12-05_001.xad

Created: 12/5/2012 3:27:30 PM
Modified: 12/5/2012 4:06:09 PM

Electropherogram Summary Continued ...



Overall Results for sample 7 : 35 days

RNA Area: 143.8 RNA Integrity Number (RIN): 3.1 (B.02.08)
RNA Concentration: 97 ng/μl Result Flagging Color:
rRNA Ratio [28s / 18s]: 1.5 Result Flagging Label: RIN: 3.10

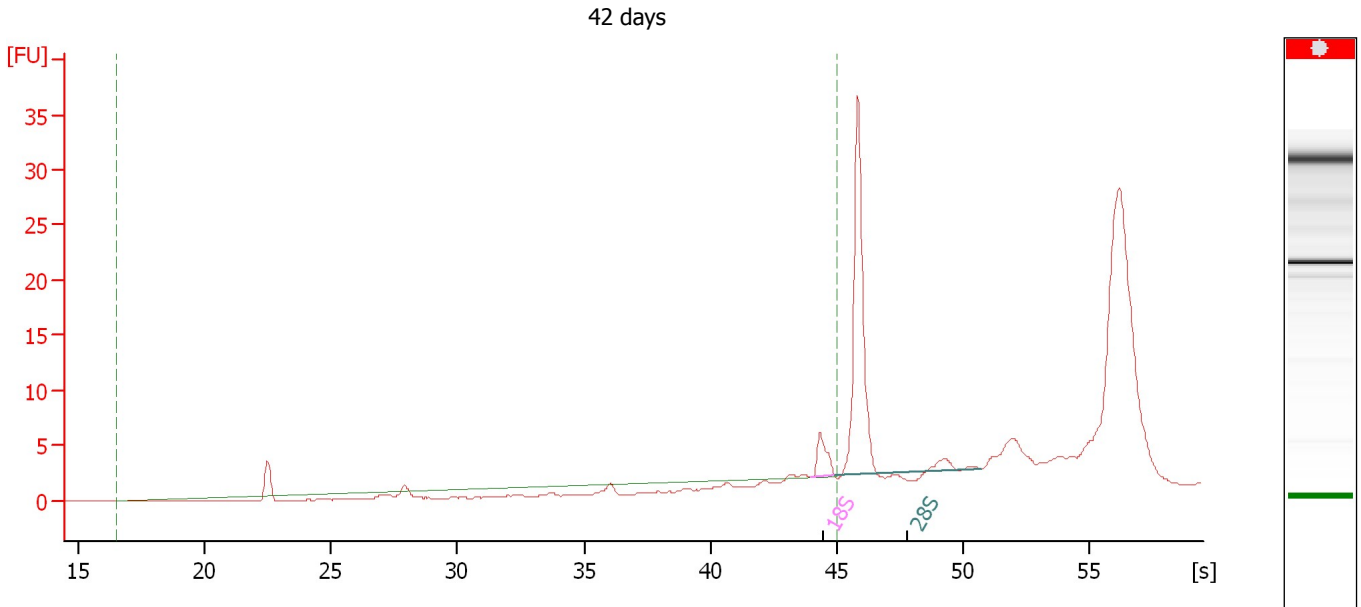
Fragment table for sample 7 : 35 days

Name	Start Time [s]	End Time [s]	Area	% of total Area
18S	43.89	45.04	4.4	3.1
28S	50.36	53.36	6.7	4.7

Assay Class: Eukaryote Total RNA Nano
Data Path: C:\...ents and Settings\Bioanalyzer\2012-12-05\2012-12-05_001.xad

Created: 12/5/2012 3:27:30 PM
Modified: 12/5/2012 4:06:09 PM

Electropherogram Summary Continued ...



Setpoint Deviations for sample 8 : 42 days

End Analysis Time Range [s] : 53

Overall Results for sample 8 : 42 days

RNA Area:	5.2	RNA Integrity Number (RIN):	N/A (B.02.08)
RNA Concentration:	4 ng/μl	Result Flagging Color:	<input type="checkbox"/>
rRNA Ratio [28s / 18s]:	0.0	Result Flagging Label:	RIN N/A

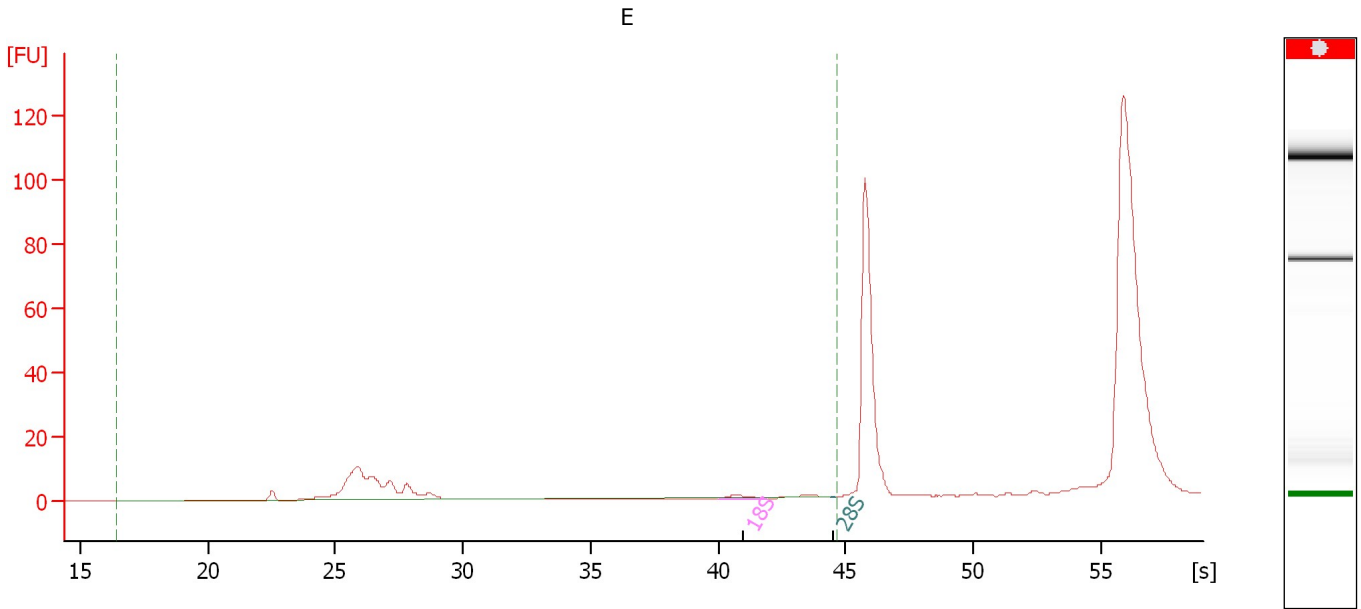
Fragment table for sample 8 : 42 days

Name	Start Time [s]	End Time [s]	Area	% of total Area
18S	43.98	44.92	3.8	73.7
28S	50.73	44.92	0.0	0.0

Assay Class: Eukaryote Total RNA Nano
Data Path: C:\...ents and Settings\Bioanalyzer\2012-12-05\2012-12-05_001.xad

Created: 12/5/2012 3:27:30 PM
Modified: 12/5/2012 4:06:09 PM

Electropherogram Summary Continued ...



Setpoint Deviations for sample 9 : E

End Analysis Time Range [s] : 53

Overall Results for sample 9 : E

RNA Area: 75.2 RNA Integrity Number (RIN): N/A (B.02.08)
RNA Concentration: 51 ng/μl Result Flagging Color:
rRNA Ratio [28s / 18s]: 0.0 Result Flagging Label: RIN N/A

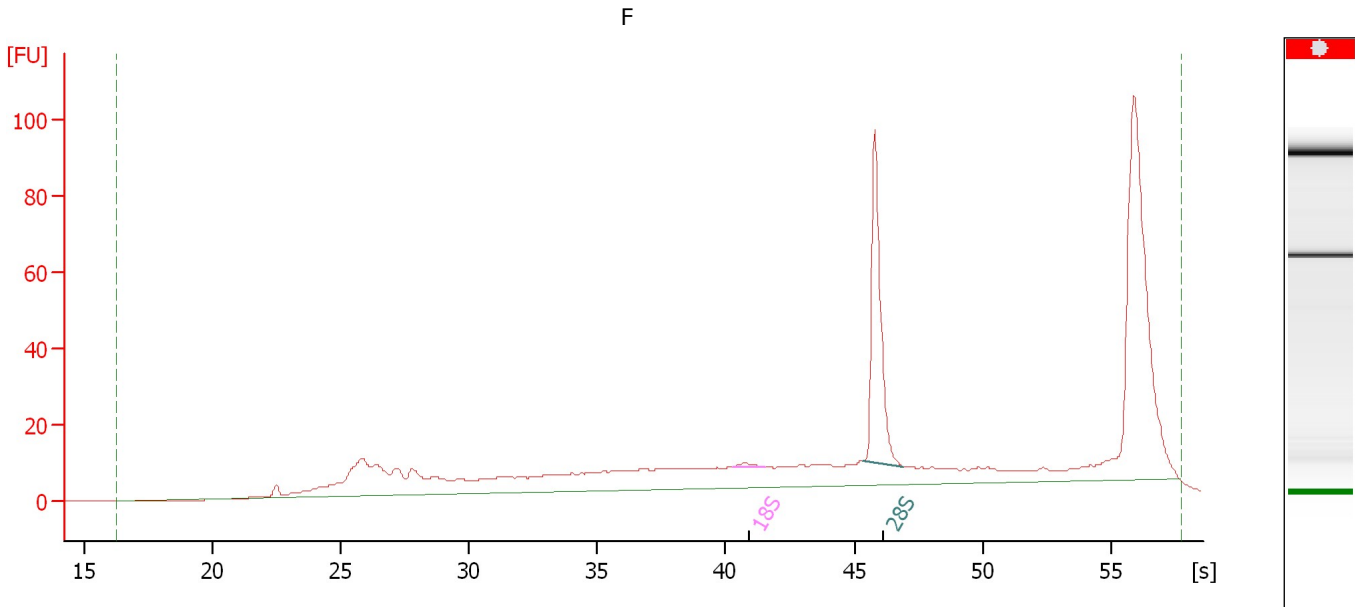
Fragment table for sample 9 : E

Name	Start Time [s]	End Time [s]	Area	% of total Area
18S	40.03	41.92	2.1	2.7
28S	44.41	44.58	0.0	0.0

Assay Class: Eukaryote Total RNA Nano
 Data Path: C:\...ents and Settings\Bioanalyzer\2012-12-05\2012-12-05_001.xad

Created: 12/5/2012 3:27:30 PM
 Modified: 12/5/2012 4:06:09 PM

Electropherogram Summary Continued ...



Overall Results for sample 10 : F

RNA Area:	638.2	RNA Integrity Number (RIN):	N/A (B.02.08)
RNA Concentration:	431 ng/μl	Result Flagging Color:	
rRNA Ratio [28s / 18s]:	42.6	Result Flagging Label:	RIN N/A

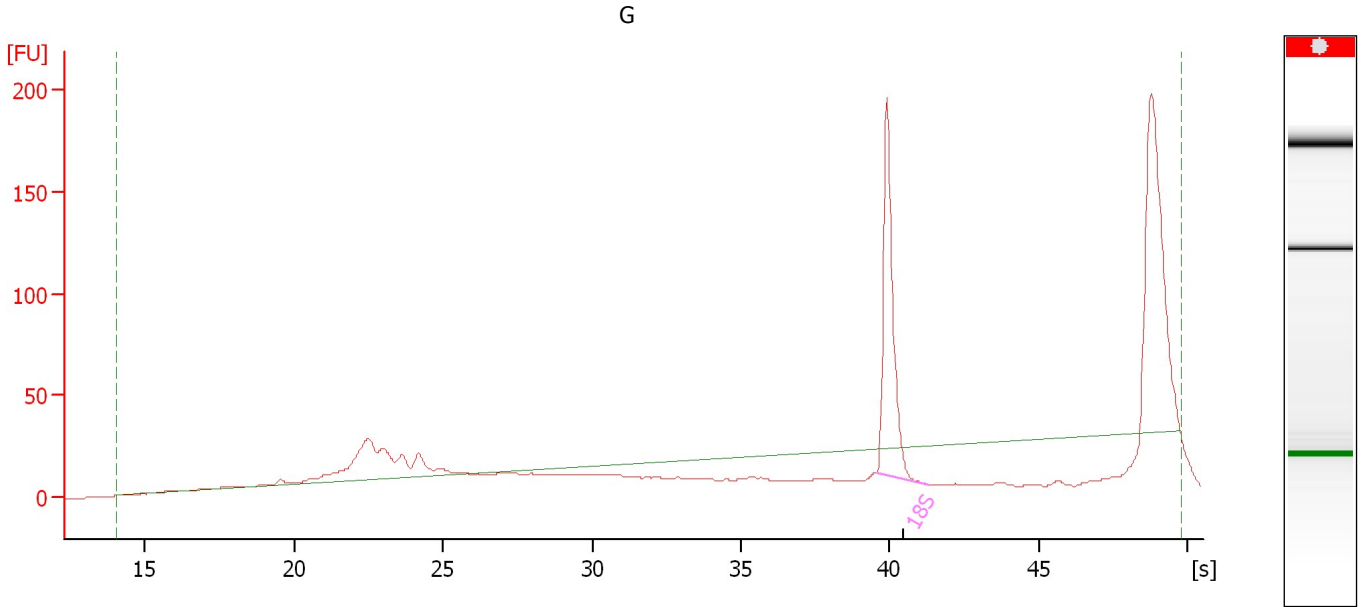
Fragment table for sample 10 : F

Name	Start Time [s]	End Time [s]	Area	% of total Area
18S	40.32	41.53	1.8	0.3
28S	45.38	46.92	77.7	12.2

Assay Class: Eukaryote Total RNA Nano
Data Path: C:\...ents and Settings\Bioanalyzer\2012-12-05\2012-12-05_001.xad

Created: 12/5/2012 3:27:30 PM
Modified: 12/5/2012 4:06:09 PM

Electropherogram Summary Continued ...



Overall Results for sample 11 : G

RNA Area:	452.4	RNA Integrity Number (RIN):	N/A (B.02.08)
RNA Concentration:	305 ng/μl	Result Flagging Color:	
rRNA Ratio [28s / 18s]:	0.0	Result Flagging Label:	RIN N/A

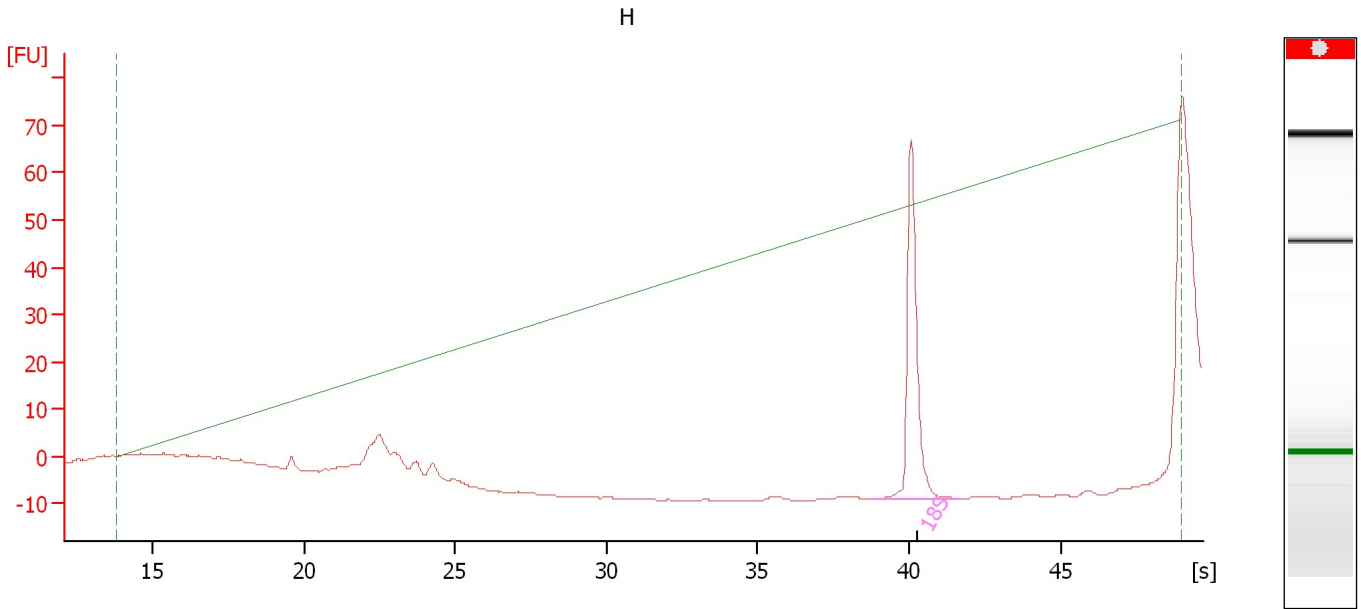
Fragment table for sample 11 : G

Name	Start Time [s]	End Time [s]	Area	% of total Area
18S	39.56	41.32	170.8	37.8

Assay Class: Eukaryote Total RNA Nano
Data Path: C:\...ents and Settings\Bioanalyzer\2012-12-05\2012-12-05_001.xad

Created: 12/5/2012 3:27:30 PM
Modified: 12/5/2012 4:06:09 PM

Electropherogram Summary Continued ...



Overall Results for sample 12 : H

RNA Area:	3.4	RNA Integrity Number (RIN):	N/A (B.02.08)
RNA Concentration:	2 ng/μl	Result Flagging Color:	
rRNA Ratio [28s / 18s]:	0.0	Result Flagging Label:	RIN N/A

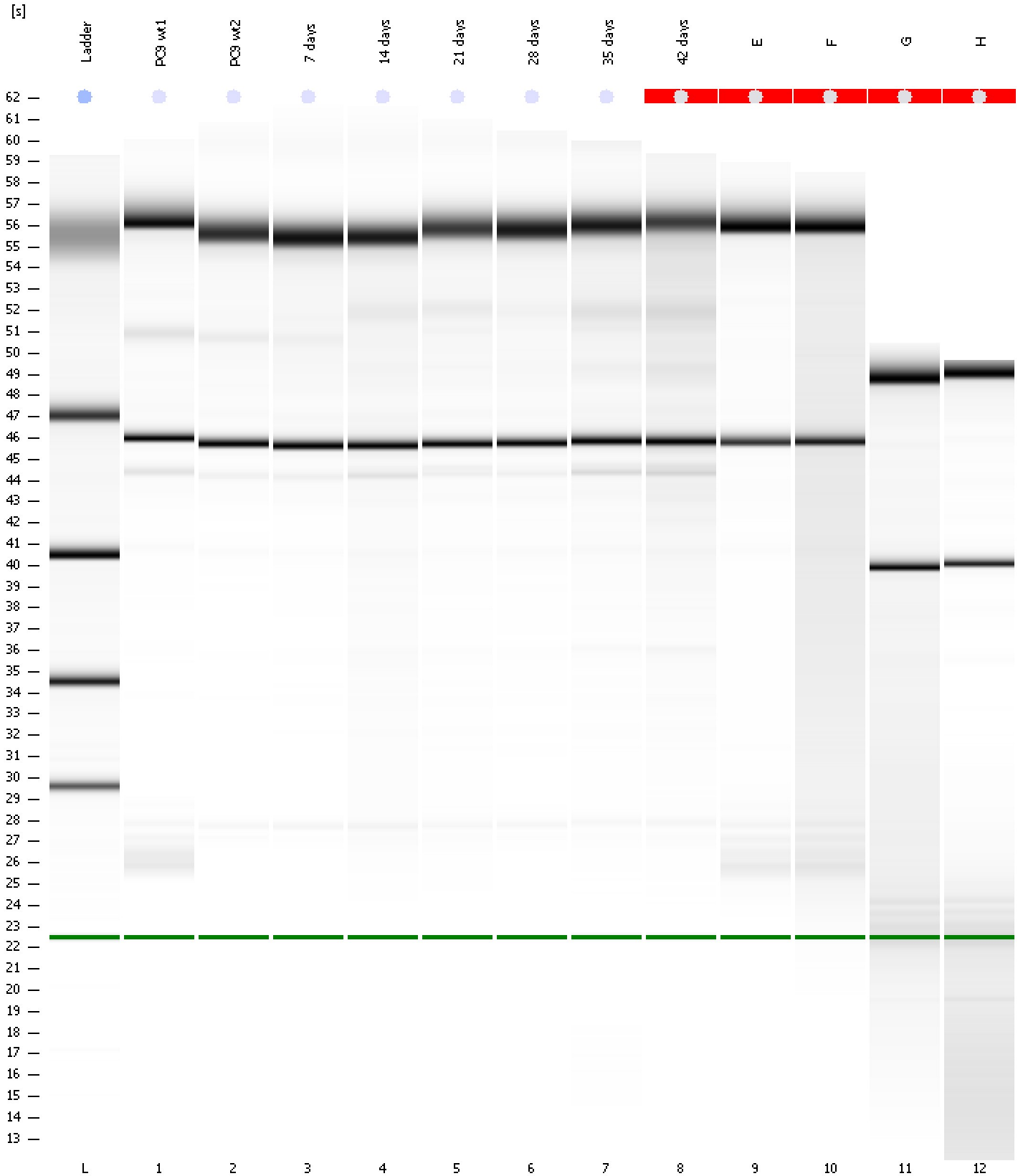
Fragment table for sample 12 : H

Name	Start Time [s]	End Time [s]	Area	% of total Area
18S	38.82	41.70	66.1	1,945.2

Assay Class: Eukaryote Total RNA Nano
Data Path: C:\...ents and Settings\Bioanalyzer\2012-12-05\2012-12-05_001.xad

Created: 12/5/2012 3:27:30 PM
Modified: 12/5/2012 4:06:09 PM

Gel Image



Assay Class: Eukaryote Total RNA Nano
 Data Path: C:\...ents and Settings\Bioanalyzer\2012-12-05\2012-12-05_001.xad

Created: 12/5/2012 3:27:30 PM
 Modified: 12/5/2012 4:06:09 PM

Run Logbook

Description	Number	Source	Category	Sub Category	Time	Time Zone	User	Host
Run ended on port 1 (Number of wells acquired: 13)		Instrument	Run		12/5/2012 3:51:20 PM	(GMT --08:00) Pacific Standard Time	UC Davis	D8XSMGH1
Run started on port 1 (File: C:\Documents and Settings\Bioanalyzer\2012-12-05\2012-12-05_001.xad)		Instrument	Run		12/5/2012 3:27:35 PM	(GMT --08:00) Pacific Standard Time	UC Davis	D8XSMGH1
Product Number : G2938B		Instrument	Run		12/5/2012 3:27:35 PM	(GMT --08:00) Pacific Standard Time	UC Davis	D8XSMGH1
Name :		Instrument	Run		12/5/2012 3:27:35 PM	(GMT --08:00) Pacific Standard Time	UC Davis	D8XSMGH1
Vendor : Agilent Technologies		Instrument	Run		12/5/2012 3:27:35 PM	(GMT --08:00) Pacific Standard Time	UC Davis	D8XSMGH1
Serial# : DE13701086		Instrument	Run		12/5/2012 3:27:35 PM	(GMT --08:00) Pacific Standard Time	UC Davis	D8XSMGH1
Firmware : C.01.069		Instrument	Run		12/5/2012 3:27:35 PM	(GMT --08:00) Pacific Standard Time	UC Davis	D8XSMGH1
Cartridge : Electrode		Instrument	Run		12/5/2012 3:27:35 PM	(GMT --08:00) Pacific Standard Time	UC Davis	D8XSMGH1