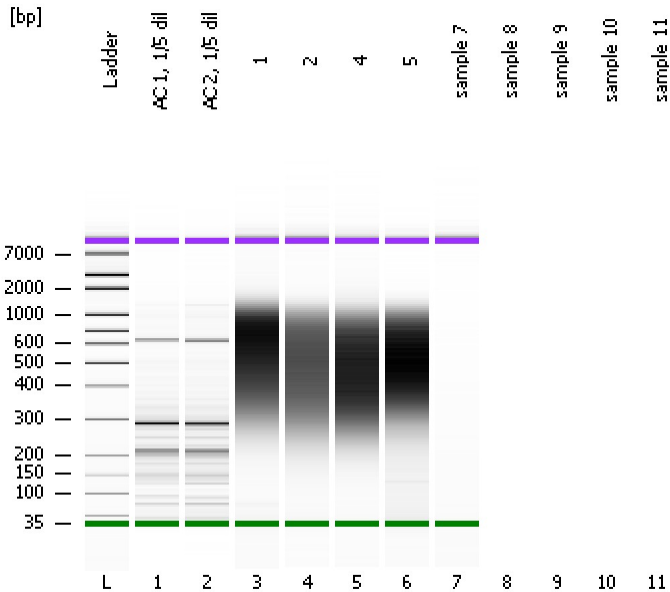


Assay Class: High Sensitivity DNA Assay
Data Path: C:\...ents and Settings\Bioanalyzer\2012-12-06\2012-12-06_001.xad

Created: 12/6/2012 9:40:09 AM
Modified: 12/6/2012 10:17:39 AM

Electrophoresis File Run Summary



Instrument Information:

Instrument Name: DE13701086 Firmware: C.01.069
Serial#: DE13701086 Type: G2938B

Assay Information:

Assay Origin Path: C:\Program Files\Agilent\2100 bioanalyzer\2100 expert\assays\dsDNA\High Sensitivity DNA.xsy
Assay Class: High Sensitivity DNA Assay
Version: 1.03
Assay Comments: Copyright © 2003-2010 Agilent Technologies

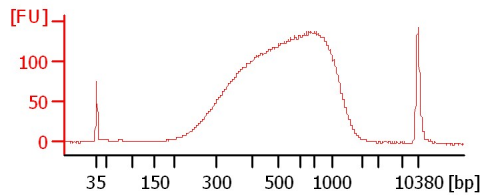
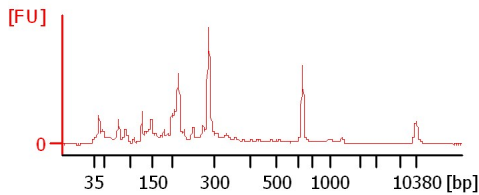
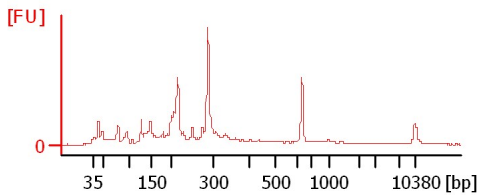
Chip Information:

Chip Lot #: Reagent Kit Lot #: Chip Comments:

AC 1, 1/5 dil

AC 2, 1/5 dil

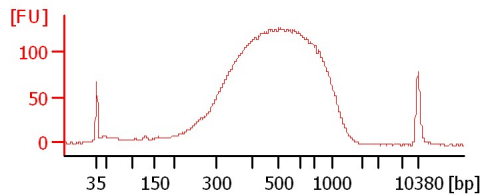
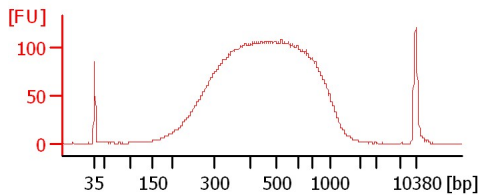
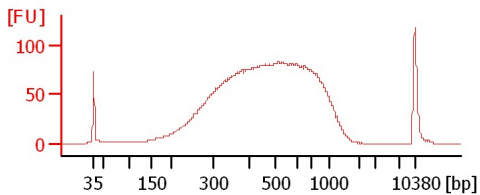
1



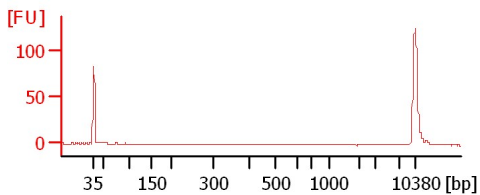
2

4

5



sample 7



Assay Class: High Sensitivity DNA Assay
Data Path: C:\...ents and Settings\Bioanalyzer\2012-12-06\2012-12-06_001.xad

Created: 12/6/2012 9:40:09 AM
Modified: 12/6/2012 10:17:39 AM

Electrophoresis File Run Summary (Chip Summary)

Sample Name	Sample Comment	Rest. Digest	Status	Observation	Result Label	Result Color
AC 1, 1/5 dil		<input type="checkbox"/>	✓			
AC 2, 1/5 dil		<input type="checkbox"/>	✓			
1		<input type="checkbox"/>	✓			
2		<input type="checkbox"/>	✓			
4		<input type="checkbox"/>	✓			
5		<input type="checkbox"/>	✓			
sample 7		<input type="checkbox"/>	✓			
sample 8		<input type="checkbox"/>	✗			
sample 9		<input type="checkbox"/>	✗			
sample 10		<input type="checkbox"/>	✗			
sample 11		<input type="checkbox"/>	✗			
Ladder		<input type="checkbox"/>	✓			

Chip Lot #

Reagent Kit Lot #

Chip Comments :

Assay Class: High Sensitivity DNA Assay
Data Path: C:\...ents and Settings\Bioanalyzer\2012-12-06\2012-12-06_001.xad

Created: 12/6/2012 9:40:09 AM
Modified: 12/6/2012 10:17:39 AM

Electrophoresis Assay Details

General Analysis Settings

Number of Available Sample and Ladder Wells (Max.) : 12
Minimum Visible Range [s] : 32
Maximum Visible Range [s] : 138
Start Analysis Time Range [s] : 33
End Analysis Time Range [s] : 137.5
Ladder Concentration [pg/μl] : 1950
Uses Standard Area for Ladder Fragments
Lower Marker Concentration [pg/μl] : 125
Upper Marker Concentration [pg/μl] : 75
Used Upper Marker for Quantitation
Standard Curve Fit is Point to Point
Show Data Aligned to Lower and Upper Marker

Integrator Settings

Integration Start Time [s] : 33.05
Integration End Time [s] : 137
Slope Threshold : 0.8
Height Threshold [FU] : 5
Area Threshold : 0.1
Width Threshold [s] : 0.6
Baseline Plateau [s] : 0.5

Filter Settings

Filter Width [s] : 0.5
Polynomial Order : 4

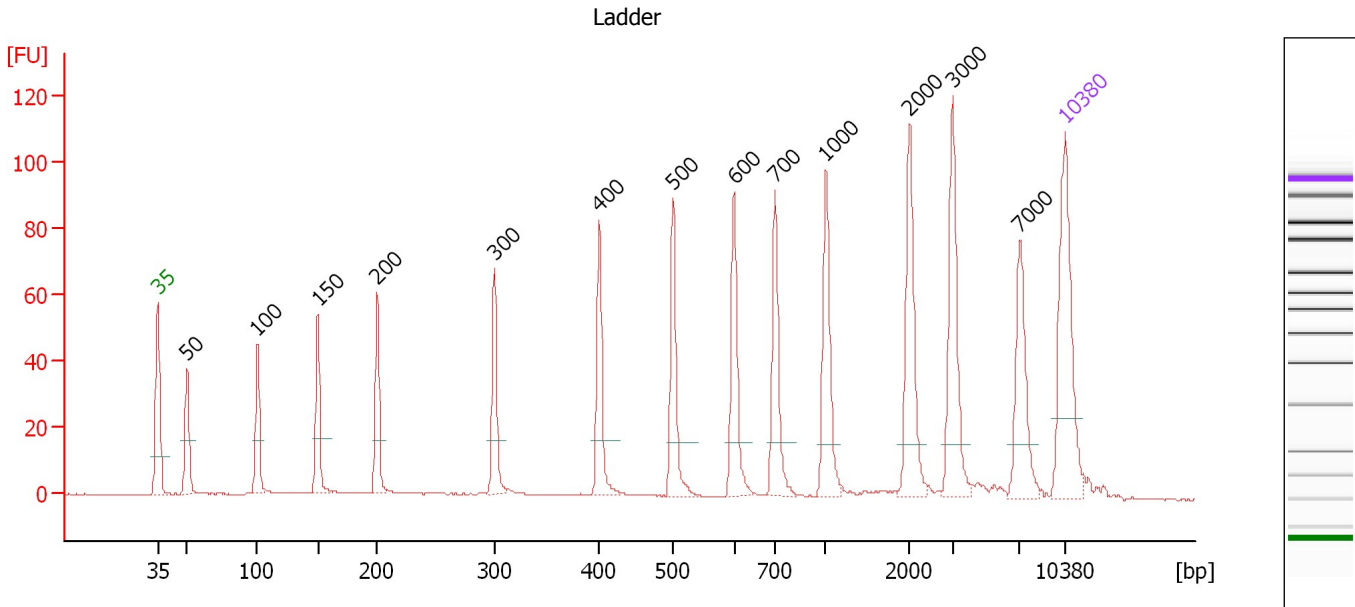
Ladder

Ladder Peak	Size	Area
1	35	160
2	50	210
3	100	208
4	150	221
5	200	242
6	300	270
7	400	305
8	500	306
9	600	336
10	700	321
11	1000	366
12	2000	413
13	3000	411
14	7000	400
15	10380	214

Assay Class: High Sensitivity DNA Assay
 Data Path: C:\...ents and Settings\Bioanalyzer\2012-12-06\2012-12-06_001.xad

Created: 12/6/2012 9:40:09 AM
 Modified: 12/6/2012 10:17:39 AM

Electropherogram Summary



Overall Results for Ladder

Noise: 0.1

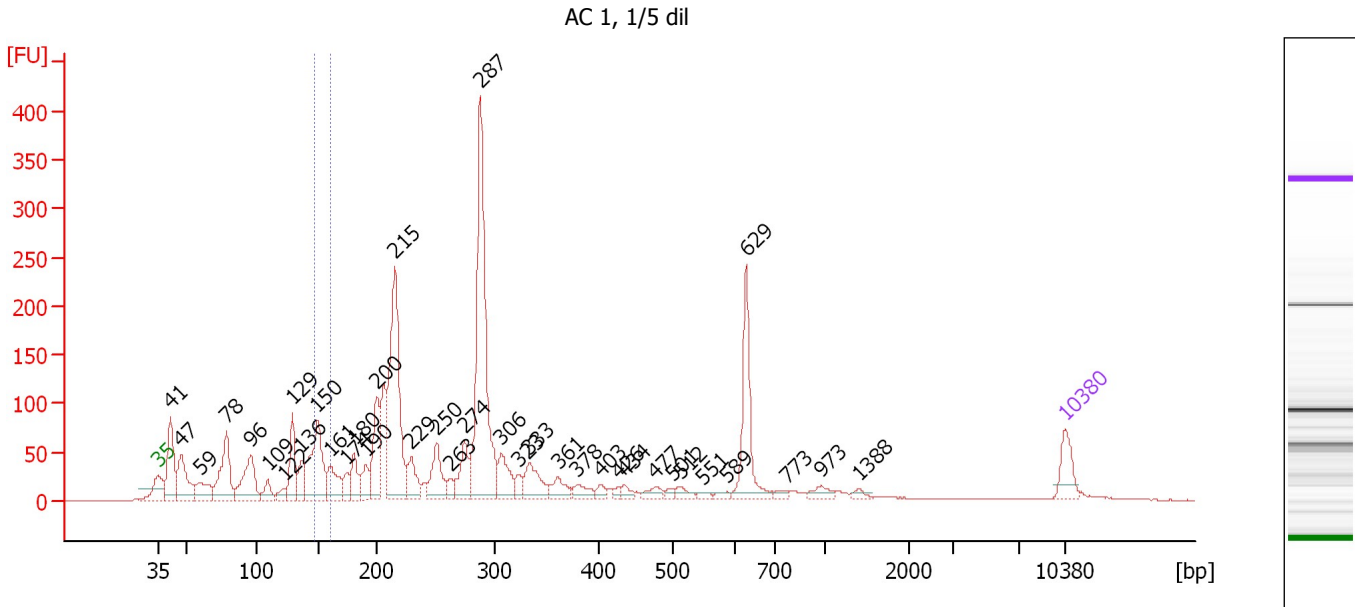
Peak table for Ladder

Peak	Size [bp]	Conc. [pg/μl]	Molarity [pmol/l]	Observations
1	35	125.00	5,411.3	Lower Marker
2	50	150.00	4,545.5	Ladder Peak
3	100	150.00	2,272.7	Ladder Peak
4	150	150.00	1,515.2	Ladder Peak
5	200	150.00	1,136.4	Ladder Peak
6	300	150.00	757.6	Ladder Peak
7	400	150.00	568.2	Ladder Peak
8	500	150.00	454.5	Ladder Peak
9	600	150.00	378.8	Ladder Peak
10	700	150.00	324.7	Ladder Peak
11	1,000	150.00	227.3	Ladder Peak
12	2,000	150.00	113.6	Ladder Peak
13	3,000	150.00	75.8	Ladder Peak
14	7,000	150.00	32.5	Ladder Peak
15	10,380	75.00	10.9	Upper Marker

Assay Class: High Sensitivity DNA Assay
 Data Path: C:\...ents and Settings\Bioanalyzer\2012-12-06\2012-12-06_001.xad

Created: 12/6/2012 9:40:09 AM
 Modified: 12/6/2012 10:17:39 AM

Electropherogram Summary Continued ...



Overall Results for sample 1 : AC 1, 1/5 dil

Number of peaks found: 38 Corr. Area 1: 123.4
 Noise: 0.3

Peak table for sample 1 : AC 1, 1/5 dil

Peak	Size [bp]	Conc. [pg/μl]	Molarity [pmol/l]	Observations
1	35	125.00	5,411.3	Lower Marker
2	41	289.46	10,596.3	
3	47	232.32	7,504.0	
4	59	118.40	3,036.5	
5	78	290.68	5,635.0	
6	96	243.64	3,860.7	
7	109	63.44	885.4	
8	122	35.21	438.3	
9	129	178.88	2,104.2	
10	136	95.60	1,062.5	
11	150	369.48	3,744.5	
12	161	135.54	1,279.4	
13	174	58.38	507.1	
14	180	101.30	851.9	
15	190	90.34	719.5	
16	200	219.51	1,664.3	
17	215	703.90	4,962.5	
18	229	110.92	733.8	
19	250	160.67	972.1	
20	263	35.91	207.2	
21	274	131.03	723.8	
22	287	942.75	4,970.2	
23	306	125.78	622.6	
24	323	41.00	192.3	
25	333	125.35	569.6	
26	361	65.04	273.1	

Assay Class: High Sensitivity DNA Assay
 Data Path: C:\...ents and Settings\Bioanalyzer\2012-12-06\2012-12-06_001.xad

Created: 12/6/2012 9:40:09 AM
 Modified: 12/6/2012 10:17:39 AM

Electropherogram Summary Continued ...

... Peak table for sample 1 : AC 1, 1/5 dil

Peak	Size [bp]	Conc. [pg/µl]	Molarity [pmol/l]	Observations
27	378	46.18	185.0	
28	403	25.52	96.1	
29	426	13.83	49.2	
30	434	24.08	84.0	
31	477	32.64	103.7	
32	501	16.26	49.2	
33	512	27.22	80.5	
34	551	12.33	33.9	
35	589	13.25	34.1	
36	629	272.39	656.2	
37	773	15.61	30.6	
38	973	28.50	44.4	
39	1,388	11.75	12.8	
40	▶ 10,380	75.00	10.9	Upper Marker

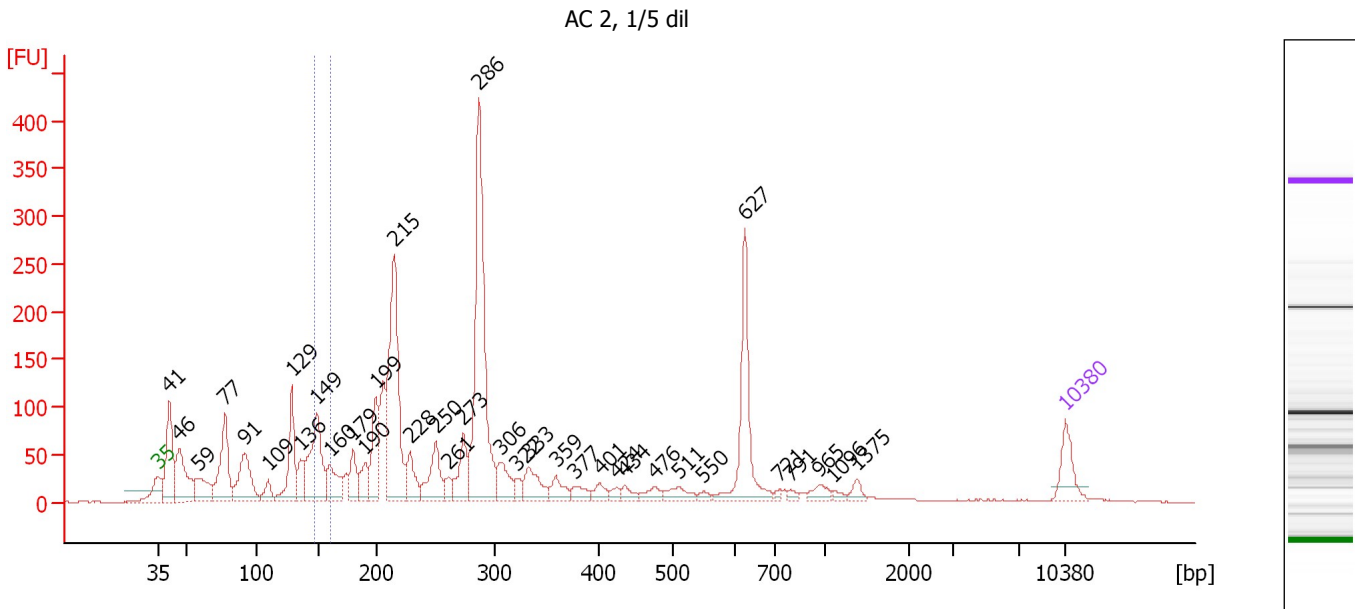
Region table for sample 1 : AC 1, 1/5 dil

From [bp]	To [bp]	Average Size [bp]	Molarity [pmol/l]	Conc. [pg/µl]	Corr. Area	% of Total	Size distribution in CV [%]	Color
147	160	152	2,666.8	267.19	123.4	4	2.3	■

Assay Class: High Sensitivity DNA Assay
 Data Path: C:\...ents and Settings\Bioanalyzer\2012-12-06\2012-12-06_001.xad

Created: 12/6/2012 9:40:09 AM
 Modified: 12/6/2012 10:17:39 AM

Electropherogram Summary Continued ...



Overall Results for sample 2 : AC 2, 1/5 dil

Number of peaks found: 36 Corr. Area 1: 136.2
 Noise: 0.4

Peak table for sample 2 : AC 2, 1/5 dil

Peak	Size [bp]	Conc. [pg/μl]	Molarity [pmol/l]	Observations
1	35	125.00	5,411.3	Lower Marker
2	41	314.18	11,623.2	
3	46	262.50	8,643.1	
4	59	140.66	3,638.0	
5	77	292.74	5,736.9	
6	91	249.03	4,144.2	
7	109	55.35	769.9	
8	129	237.11	2,791.6	
9	136	90.33	1,006.9	
10	149	349.58	3,555.9	
11	160	132.72	1,258.8	
12	179	103.95	877.9	
13	190	84.49	674.7	
14	199	201.47	1,537.2	
15	215	633.77	4,476.4	
16	228	111.09	738.3	
17	250	158.30	959.7	
18	261	41.79	242.7	
19	273	128.51	712.3	
20	286	838.67	4,438.1	
21	306	103.24	511.3	
22	322	30.15	142.0	
23	333	104.79	477.0	
24	359	60.89	257.2	
25	377	38.79	156.0	
26	401	37.58	142.0	

Assay Class: High Sensitivity DNA Assay
 Data Path: C:\...ents and Settings\Bioanalyzer\2012-12-06\2012-12-06_001.xad


Created: 12/6/2012 9:40:09 AM
 Modified: 12/6/2012 10:17:39 AM

Electropherogram Summary Continued ...

... Peak table for sample 2 : AC 2, 1/5 dil

Peak	Size [bp]	Conc. [pg/μl]	Molarity [pmol/l]	Observations
27	424	18.60	66.5	
28	434	28.69	100.1	
29	476	33.22	105.6	
30	511	49.43	146.6	
31	550	14.45	39.8	
32	627	310.84	751.8	
33	721	9.29	19.5	
34	791	12.23	23.4	
35	965	31.07	48.8	
36	1,096	11.78	16.3	
37	1,375	22.32	24.6	
38	10,380	75.00	10.9	Upper Marker

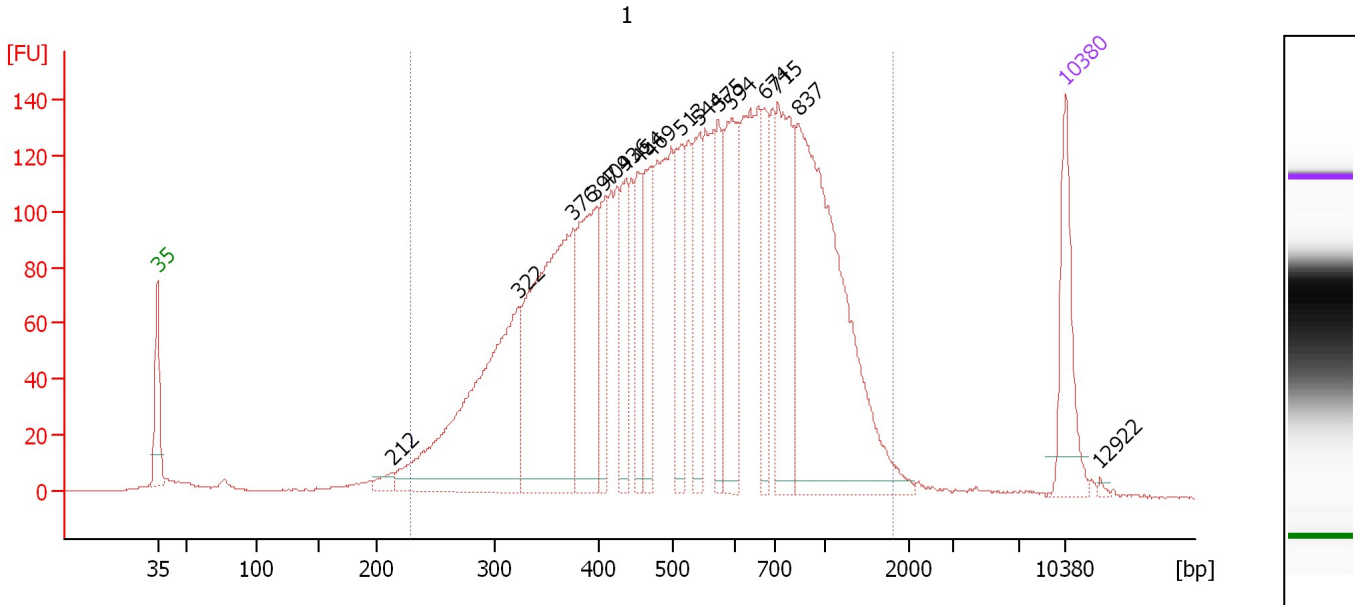
Region table for sample 2 : AC 2, 1/5 dil

From [bp]	To [bp]	Average Size [bp]	Molarity [pmol/l]	Conc. [pg/μl]	Corr. Area	% of Total	Size distribution in CV [%]	Color
147	160	152	2,520.6	252.37	136.2	4	2.5	

Assay Class: High Sensitivity DNA Assay
 Data Path: C:\...ents and Settings\Bioanalyzer\2012-12-06\2012-12-06_001.xad

Created: 12/6/2012 9:40:09 AM
 Modified: 12/6/2012 10:17:39 AM

Electropherogram Summary Continued ...



Overall Results for sample 3 : 1

Number of peaks found: 16 Corr. Area 1: 4,097.5
 Noise: 0.2

Peak table for sample 3 : 1

Peak	Size [bp]	Conc. [pg/μl]	Molarity [pmol/l]	Observations
1	35	125.00	5,411.3	Lower Marker
2	212	14.19	101.2	
3	322	386.25	1,816.3	
4	376	383.14	1,545.3	
5	397	186.35	712.0	
6	409	76.54	283.5	
7	436	79.48	276.0	
8	454	69.98	233.8	
9	469	102.76	331.9	
10	513	94.10	277.8	
11	544	92.15	256.7	
12	575	74.67	196.9	
13	594	141.56	360.8	
14	674	70.50	158.5	
15	715	169.99	360.4	
16	837	445.32	805.9	
17	10,380	75.00	10.9	Upper Marker
18	12,922	0.00	0.0	

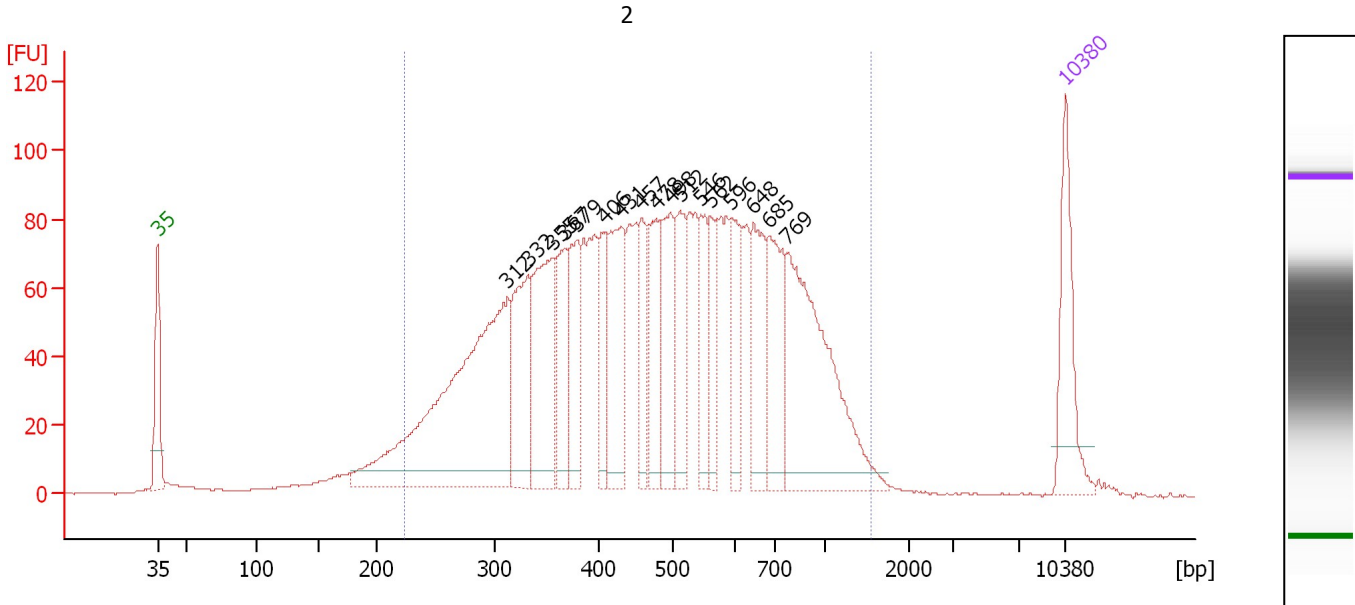
Region table for sample 3 : 1

From [bp]	To [bp]	Average Size [bp]	Molarity [pmol/l]	Conc. [pg/μl]	Corr. Area	% of Total	Size distribution in CV [%]	Color
227	1,800	594	10,138.8	3,153.28	4,097.5	96	45.7	Blue

Assay Class: High Sensitivity DNA Assay
 Data Path: C:\...ents and Settings\Bioanalyzer\2012-12-06\2012-12-06_001.xad

Created: 12/6/2012 9:40:09 AM
 Modified: 12/6/2012 10:17:39 AM

Electropherogram Summary Continued ...



Overall Results for sample 4 : 2

Number of peaks found: 17 Corr. Area 1: 2,809.7
 Noise: 0.2

Peak table for sample 4 : 2

Peak	Size [bp]	Conc. [pg/μl]	Molarity [pmol/l]	Observations
1	35	125.00	5,411.3	Lower Marker
2	312	488.25	2,368.3	
3	332	129.61	591.7	
4	355	165.84	708.0	
5	367	90.11	372.3	
6	379	90.58	362.5	
7	406	62.77	234.0	
8	431	129.41	455.2	
9	457	58.78	194.7	
10	478	80.08	254.0	
11	498	106.88	325.4	
12	512	83.87	248.1	
13	546	62.32	173.1	
14	562	56.55	152.6	
15	596	60.83	154.7	
16	648	94.78	221.8	
17	685	101.24	224.0	
18	769	262.91	518.1	
19	10,380	75.00	10.9	Upper Marker

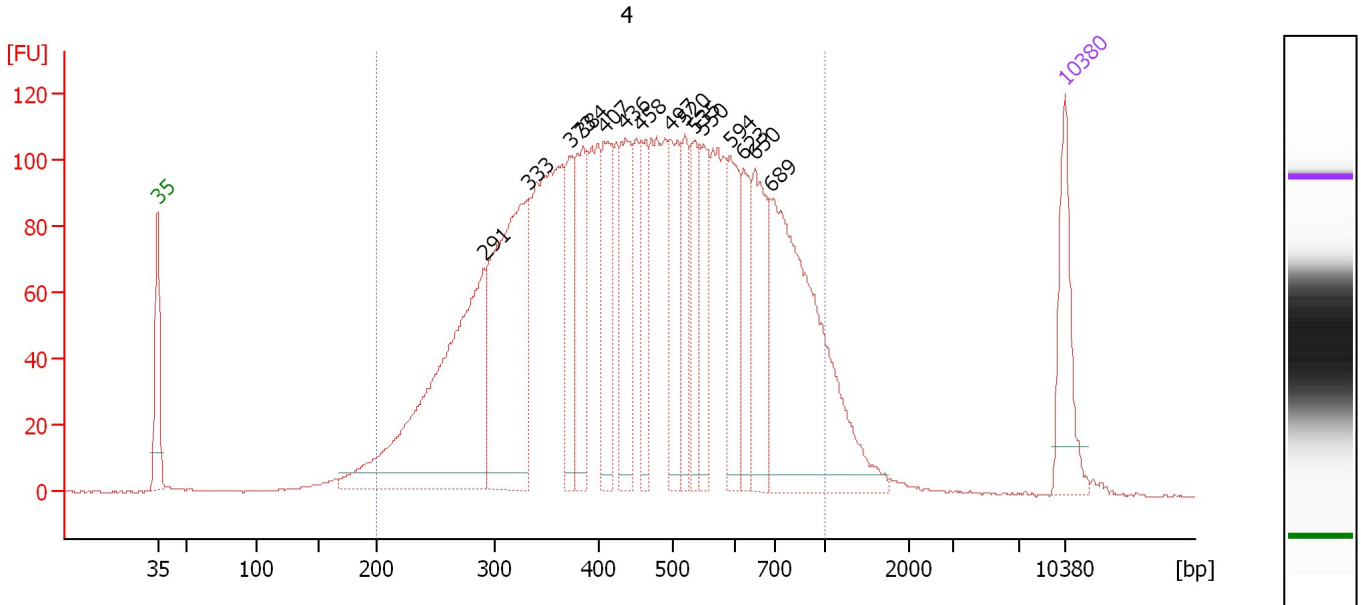
Region table for sample 4 : 2

From [bp]	To [bp]	Average Size [bp]	Molarity [pmol/l]	Conc. [pg/μl]	Corr. Area	% of Total	Size distribution in CV [%]	Color
224	1,542	521	9,607.6	2,681.06	2,809.7	94	42.5	Blue

Assay Class: High Sensitivity DNA Assay
 Data Path: C:\...ents and Settings\Bioanalyzer\2012-12-06\2012-12-06_001.xad

Created: 12/6/2012 9:40:09 AM
 Modified: 12/6/2012 10:17:39 AM

Electropherogram Summary Continued ...



Overall Results for sample 5 : 4

Number of peaks found: 15 Corr. Area 1: 3,612.8
 Noise: 0.2

Peak table for sample 5 : 4

Peak	Size [bp]	Conc. [pg/μl]	Molarity [pmol/l]	Observations
1	35	125.00	5,411.3	Lower Marker
2	291	479.87	2,496.2	
3	333	374.31	1,704.8	
4	373	93.77	380.5	
5	384	130.57	515.0	
6	407	116.40	433.1	
7	436	126.35	439.1	
8	458	76.97	254.6	
9	497	103.57	315.8	
10	520	72.54	211.5	
11	535	81.14	229.8	
12	550	83.61	230.2	
13	594	98.16	250.3	
14	623	80.87	196.6	
15	650	121.83	283.9	
16	689	390.31	857.7	
17	10,380	75.00	10.9	Upper Marker

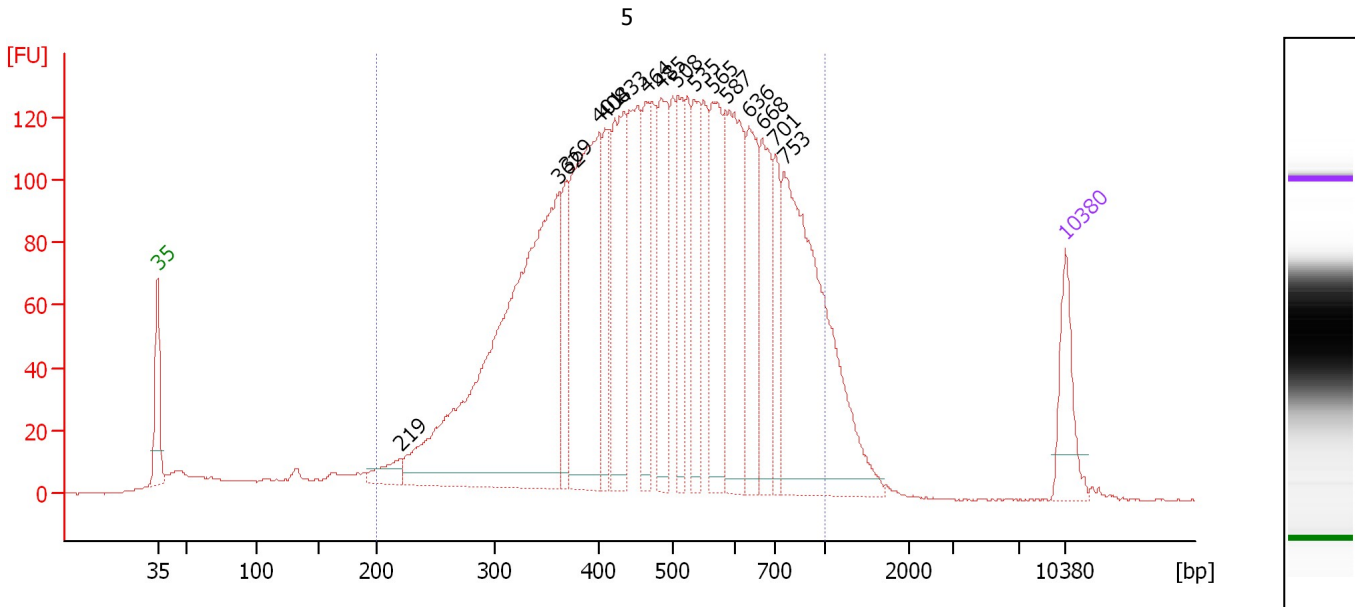
Region table for sample 5 : 4

From [bp]	To [bp]	Average Size [bp]	Molarity [pmol/l]	Conc. [pg/μl]	Corr. Area	% of Total	Size distribution in CV [%]	Color
200	1,000	477	12,739.1	3,383.46	3,612.8	95	35.2	Blue

Assay Class: High Sensitivity DNA Assay
 Data Path: C:\...ents and Settings\Bioanalyzer\2012-12-06\2012-12-06_001.xad

Created: 12/6/2012 9:40:09 AM
 Modified: 12/6/2012 10:17:39 AM

Electropherogram Summary Continued ...



Overall Results for sample 6 : 5

Number of peaks found: 16 Corr. Area 1: 3,693.2
 Noise: 0.2

Peak table for sample 6 : 5

Peak	Size [bp]	Conc. [pg/μl]	Molarity [pmol/l]	Observations
1	35	125.00	5,411.3	Lower Marker
2	219	43.18	298.1	
3	362	1,003.03	4,200.8	
4	369	113.73	466.9	
5	401	460.16	1,740.1	
6	408	124.83	464.1	
7	433	243.54	851.8	
8	464	128.78	420.5	
9	485	186.65	583.7	
10	508	135.69	404.6	
11	535	138.43	392.1	
12	565	218.06	585.0	
13	587	261.17	673.6	
14	636	162.11	386.0	
15	668	156.89	355.7	
16	701	92.89	200.8	
17	753	554.54	1,115.3	
18	10,380	75.00	10.9	Upper Marker

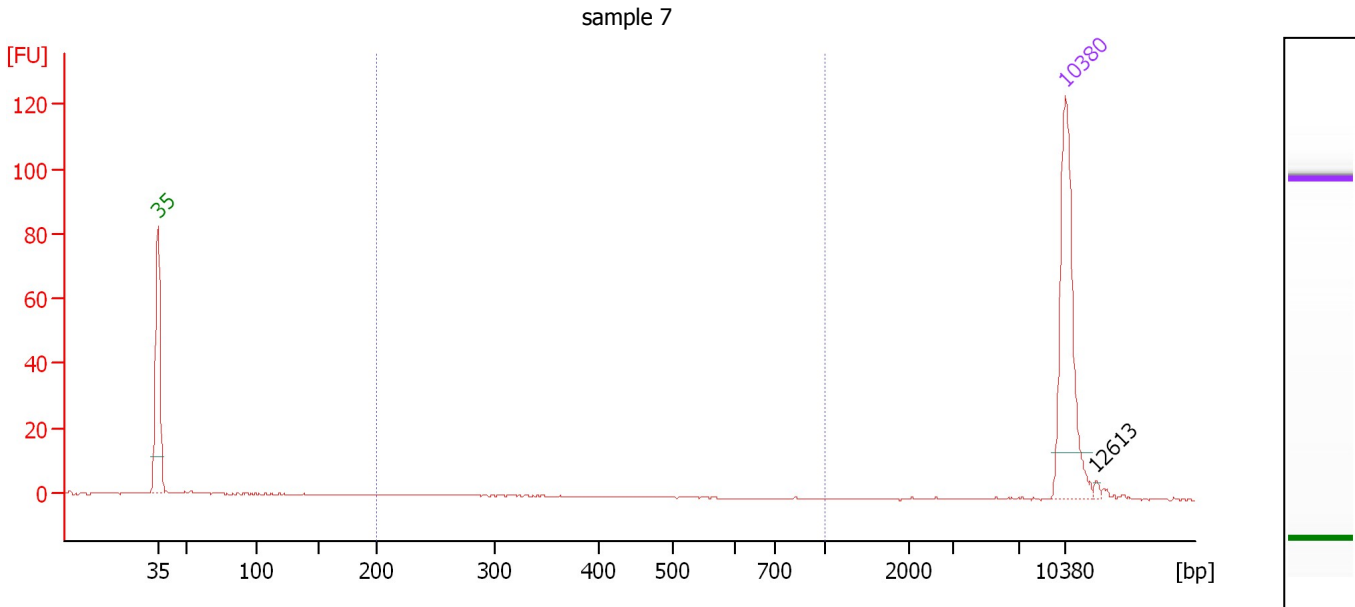
Region table for sample 6 : 5

From [bp]	To [bp]	Average Size [bp]	Molarity [pmol/l]	Conc. [pg/μl]	Corr. Area	% of Total	Size distribution in CV [%]	Color
200	1,000	505	16,853.8	4,821.05	3,693.2	92	32.9	Blue

Assay Class: High Sensitivity DNA Assay
 Data Path: C:\...ents and Settings\Bioanalyzer\2012-12-06\2012-12-06_001.xad

Created: 12/6/2012 9:40:09 AM
 Modified: 12/6/2012 10:17:39 AM

Electropherogram Summary Continued ...



Overall Results for sample 7 : sample 7

Number of peaks found: 1 Corr. Area 1: 0.9
 Noise: 0.1

Peak table for sample 7 : sample 7

Peak	Size [bp]	Conc. [pg/μl]	Molarity [pmol/l]	Observations
1	35	125.00	5,411.3	Lower Marker
2	10,380	75.00	10.9	Upper Marker
3	12,613	0.00	0.0	

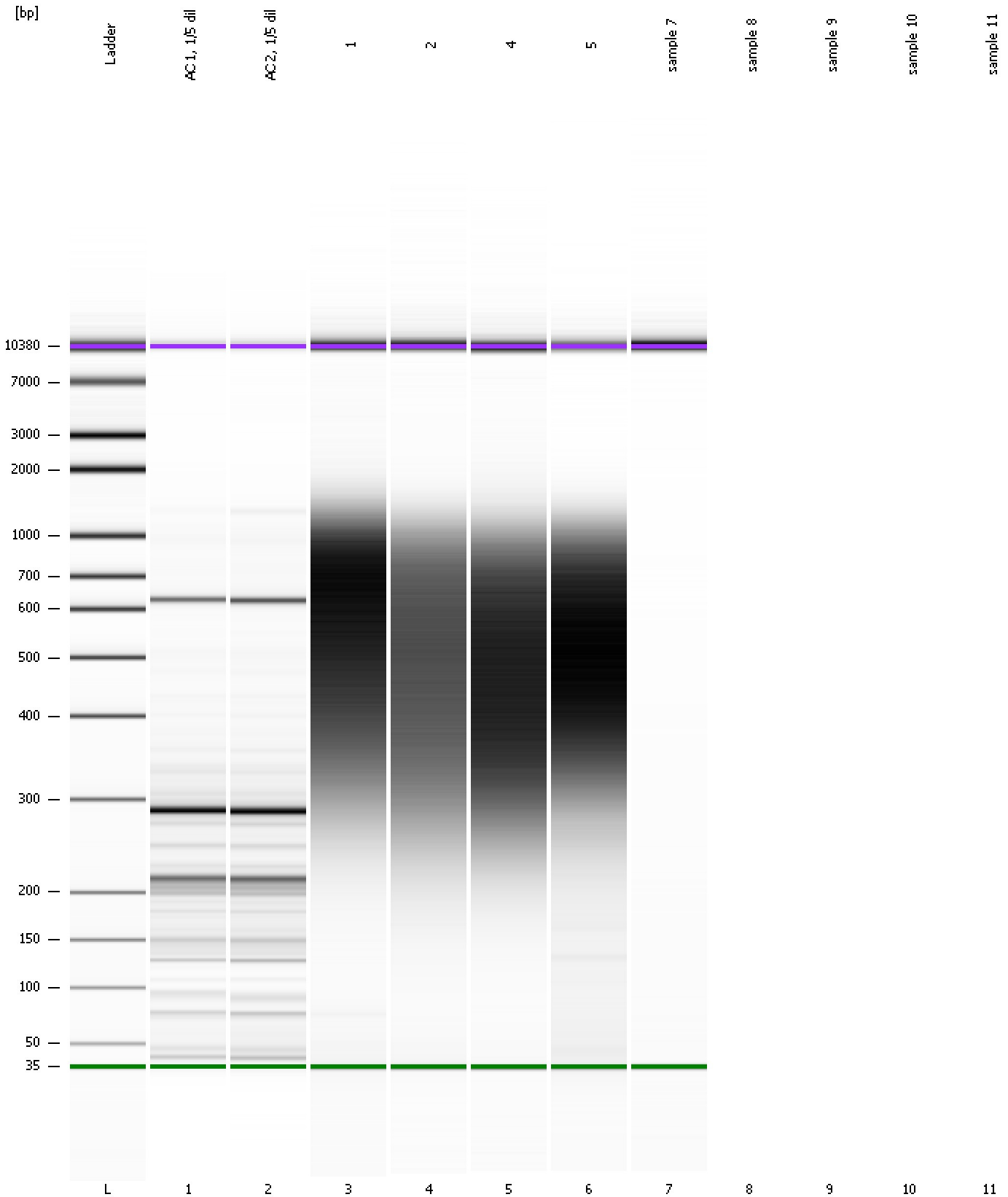
Region table for sample 7 : sample 7

From [bp]	To [bp]	Average Size [bp]	Molarity [pmol/l]	Conc. [pg/μl]	Corr. Area	% of Total	Size distribution in CV [%]	Color
200	1,000	290	4.9	0.90	0.9	5	20.9	Blue

Assay Class: High Sensitivity DNA Assay
Data Path: C:\...ents and Settings\Bioanalyzer\2012-12-06\2012-12-06_001.xad

Created: 12/6/2012 9:40:09 AM
Modified: 12/6/2012 10:17:39 AM

Gel Image



Assay Class: High Sensitivity DNA Assay
Data Path: C:\...ents and Settings\Bioanalyzer\2012-12-06\2012-12-06_001.xad

Created: 12/6/2012 9:40:09 AM
Modified: 12/6/2012 10:17:39 AM

Invalid Samples

Sample 8 has not been run, no results available.

Sample 9 has not been run, no results available.

Sample 10 has not been run, no results available.

Sample 11 has not been run, no results available.

Assay Class: High Sensitivity DNA Assay
 Data Path: C:\...ents and Settings\Bioanalyzer\2012-12-06\2012-12-06_001.xad

Created: 12/6/2012 9:40:09 AM
 Modified: 12/6/2012 10:17:39 AM

Run Logbook

Description	Number	Source	Category	Sub Category	Time	Time Zone	User	Host
Run aborted on port 1		Instrument	Run		12/6/2012 10:10:18 AM	(GMT --08:00) Pacific Standard Time	UC Davis	D8XSMGH1
Run started on port 1 (File: C:\Documents and Settings\Bioanalyzer\2012-12-06\2012-12-06_001.xad)		Instrument	Run		12/6/2012 9:40:15 AM	(GMT --08:00) Pacific Standard Time	UC Davis	D8XSMGH1
Product Number : G2938B		Instrument	Run		12/6/2012 9:40:15 AM	(GMT --08:00) Pacific Standard Time	UC Davis	D8XSMGH1
Name :		Instrument	Run		12/6/2012 9:40:15 AM	(GMT --08:00) Pacific Standard Time	UC Davis	D8XSMGH1
Vendor : Agilent Technologies		Instrument	Run		12/6/2012 9:40:15 AM	(GMT --08:00) Pacific Standard Time	UC Davis	D8XSMGH1
Serial# : DE13701086		Instrument	Run		12/6/2012 9:40:15 AM	(GMT --08:00) Pacific Standard Time	UC Davis	D8XSMGH1
Firmware : C.01.069		Instrument	Run		12/6/2012 9:40:15 AM	(GMT --08:00) Pacific Standard Time	UC Davis	D8XSMGH1
Cartridge : Electrode		Instrument	Run		12/6/2012 9:40:15 AM	(GMT --08:00) Pacific Standard Time	UC Davis	D8XSMGH1