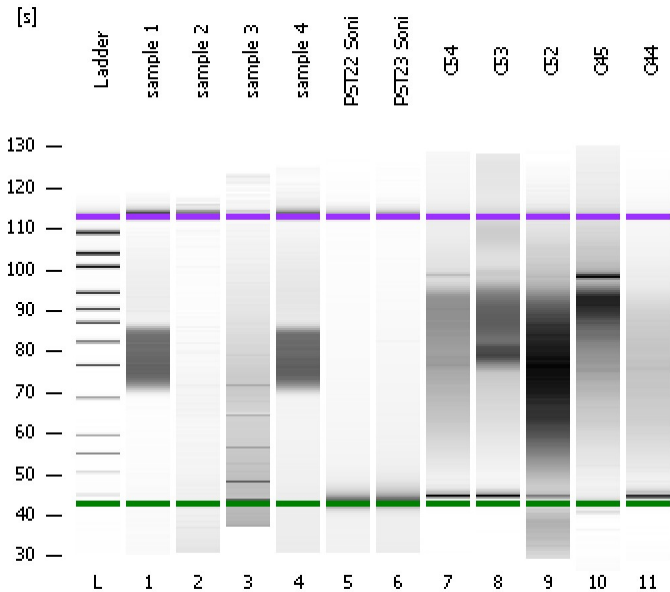


Assay Class: High Sensitivity DNA Assay
Data Path: C:\...t\2100 bioanalyzer\2100 expert\data\PDFs\2012-02-13_003.xad

Created: 2/13/2012 1:33:01 PM
Modified: 2/13/2012 4:37:35 PM

Electrophoresis File Run Summary



Instrument Information:

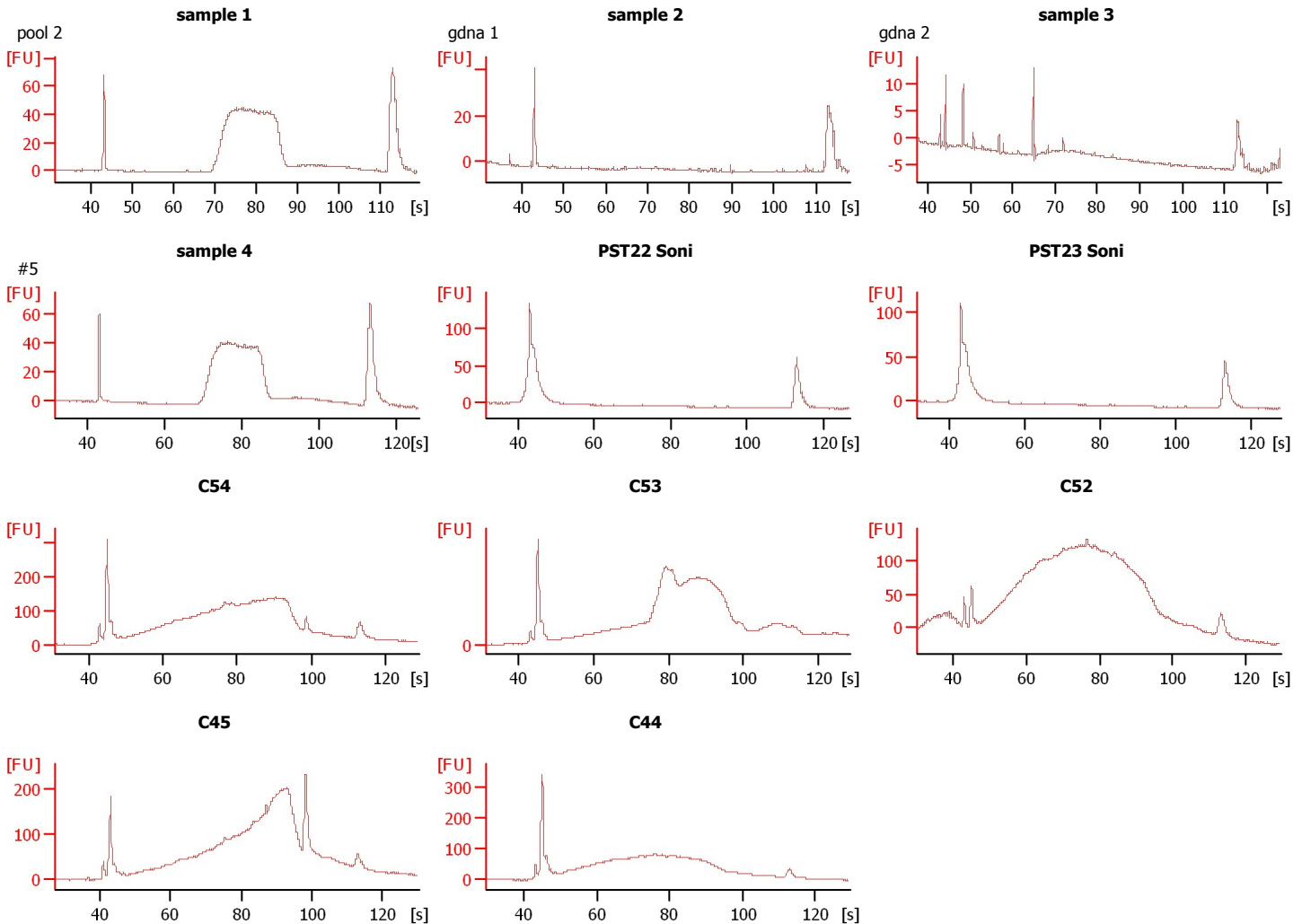
Instrument Name: DE13701086 Firmware: C.01.069
Serial#: DE13701086 Type: G2938B

Assay Information:

Assay Origin Path: C:\Program Files\Agilent\2100 bioanalyzer\2100 expert\assays\dsDNA\High Sensitivity DNA.xsy
Assay Class: High Sensitivity DNA Assay
Version: 1.03
Assay Comments: Copyright © 2003-2010 Agilent Technologies

Chip Information:

Chip Lot #: Reagent Kit Lot #: Chip Comments:



Assay Class: High Sensitivity DNA Assay
Data Path: C:\...t\2100 bioanalyzer\2100 expert\data\PDFs\2012-02-13_003.xad

Created: 2/13/2012 1:33:01 PM
Modified: 2/13/2012 4:37:35 PM

Electrophoresis File Run Summary (Chip Summary)

Sample Name	Sample Comment	Rest. Digest	Status	Observation	Result Label	Result Color
sample 1	pool 2	<input type="checkbox"/>	✓			
sample 2	gdna 1	<input type="checkbox"/>	✓			
sample 3	gdna 2	<input type="checkbox"/>	✓			
sample 4	#5	<input type="checkbox"/>	✓			
PST22 Soni		<input type="checkbox"/>	✓			
PST23 Soni		<input type="checkbox"/>	✓			
C54		<input type="checkbox"/>	✓			
C53		<input type="checkbox"/>	✓			
C52		<input type="checkbox"/>	✓			
C45		<input type="checkbox"/>	✓			
C44		<input type="checkbox"/>	✓			
Ladder		<input type="checkbox"/>	✓			

Chip Lot #

Reagent Kit Lot #

Chip Comments :

Assay Class: High Sensitivity DNA Assay
Data Path: C:\...t\2100 bioanalyzer\2100 expert\data\PDFs\2012-02-13_003.xad

Created: 2/13/2012 1:33:01 PM
Modified: 2/13/2012 4:37:35 PM

Electrophoresis Assay Details

General Analysis Settings

Number of Available Sample and Ladder Wells (Max.) : 12
Minimum Visible Range [s] : 32
Maximum Visible Range [s] : 138
Start Analysis Time Range [s] : 33
End Analysis Time Range [s] : 137.5
Ladder Concentration [pg/μl] : 1950
Uses Standard Area for Ladder Fragments
Lower Marker Concentration [pg/μl] : 125
Upper Marker Concentration [pg/μl] : 75
Used Upper Marker for Quantitation
Standard Curve Fit is Point to Point
Show Data Aligned to Lower and Upper Marker

Integrator Settings

Integration Start Time [s] : 33.05
Integration End Time [s] : 137
Slope Threshold : 0.8
Height Threshold [FU] : 5
Area Threshold : 0.1
Width Threshold [s] : 0.6
Baseline Plateau [s] : 0.5

Filter Settings

Filter Width [s] : 0.5
Polynomial Order : 4

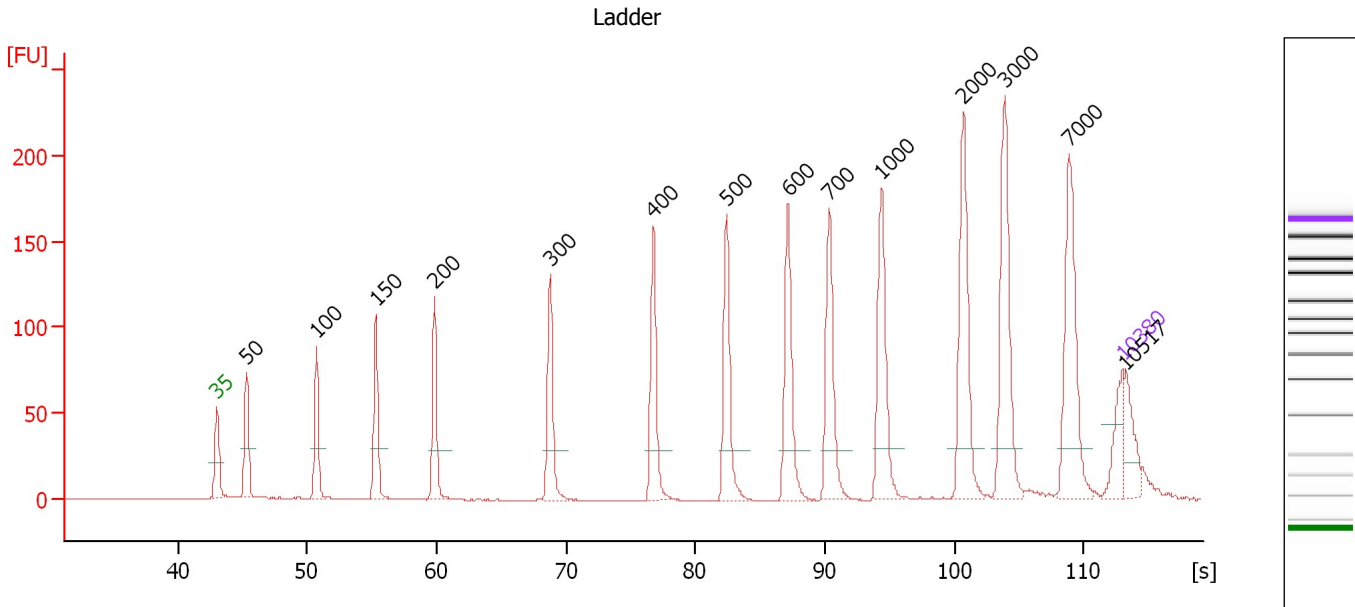
Ladder

Ladder Peak	Size	Area
1	35	160
2	50	210
3	100	208
4	150	221
5	200	242
6	300	270
7	400	305
8	500	306
9	600	336
10	700	321
11	1000	366
12	2000	413
13	3000	411
14	7000	400
15	10380	214

Assay Class: High Sensitivity DNA Assay
 Data Path: C:\...t\2100 bioanalyzer\2100 expert\data\PDFs\2012-02-13_003.xad

Created: 2/13/2012 1:33:01 PM
 Modified: 2/13/2012 4:37:35 PM

Electropherogram Summary



Overall Results for Ladder

Noise: 0.2

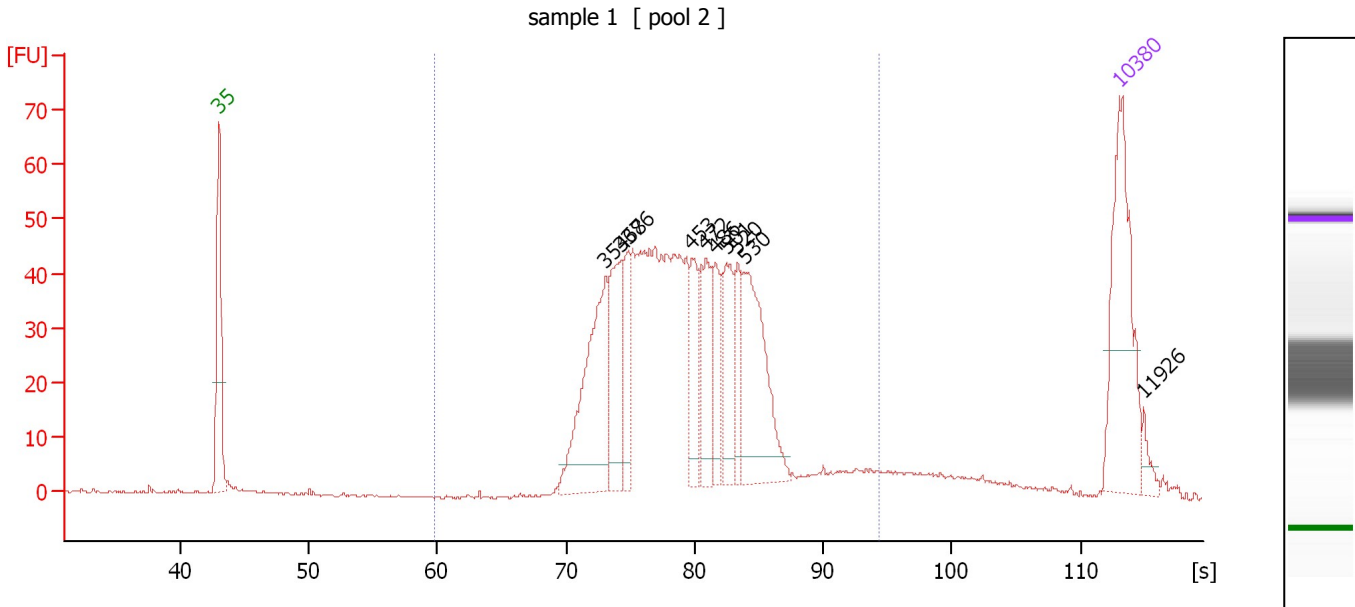
Peak table for Ladder

Peak	Size [bp]	Conc. [pg/μl]	Molarity [pmol/l]	Observations
1	35	125.00	5,411.3	Lower Marker
2	50	150.00	4,545.5	Ladder Peak
3	100	150.00	2,272.7	Ladder Peak
4	150	150.00	1,515.2	Ladder Peak
5	200	150.00	1,136.4	Ladder Peak
6	300	150.00	757.6	Ladder Peak
7	400	150.00	568.2	Ladder Peak
8	500	150.00	454.5	Ladder Peak
9	600	150.00	378.8	Ladder Peak
10	700	150.00	324.7	Ladder Peak
11	1,000	150.00	227.3	Ladder Peak
12	2,000	150.00	113.6	Ladder Peak
13	3,000	150.00	75.8	Ladder Peak
14	7,000	150.00	32.5	Ladder Peak
15	10,380	75.00	10.9	Upper Marker
16	10,517	0.00	0.0	

Assay Class: High Sensitivity DNA Assay
 Data Path: C:\...t\2100 bioanalyzer\2100 expert\data\PDFs\2012-02-13_003.xad

Created: 2/13/2012 1:33:01 PM
 Modified: 2/13/2012 4:37:35 PM

Electropherogram Summary Continued ...



Overall Results for sample 1 : sample 1

Number of peaks found: 10 Corr. Area 1: 852.0
 Noise: 0.3

Peak table for sample 1 : sample 1

Peak	Size [bp]	Conc. [pg/μl]	Molarity [pmol/l]	Observations
1	35	125.00	5,411.3	Lower Marker
2	354	114.75	491.4	
3	368	59.41	244.3	
4	376	31.86	128.4	
5	453	35.87	120.0	
6	472	39.11	125.5	
7	486	31.90	99.4	
8	501	41.27	124.7	
9	520	24.66	71.9	
10	530	94.68	270.5	
11	10,380	75.00	10.9	Upper Marker
12	11,926	0.00	0.0	

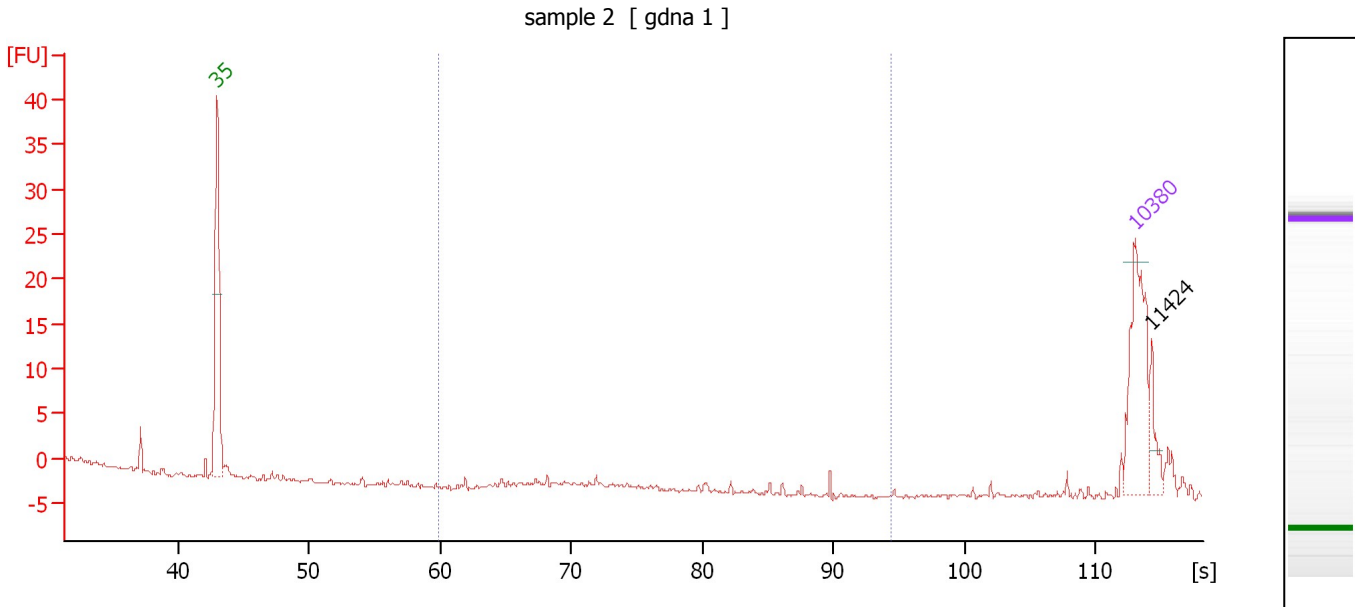
Region table for sample 1 : sample 1

From [s]	Molarity [pmol/l]	Average Size [bp]	Conc. [pg/μl]	To [s]	Corr. Area	% of Total	Size distribution in CV [%]	Color
59.81	2,818.5	452	798.52	94.40	852.0	94	22.0	Blue

Assay Class: High Sensitivity DNA Assay
 Data Path: C:\...t\2100 bioanalyzer\2100 expert\data\PDFs\2012-02-13_003.xad

Created: 2/13/2012 1:33:01 PM
 Modified: 2/13/2012 4:37:35 PM

Electropherogram Summary Continued ...



Overall Results for sample 2 : sample 2

Number of peaks found: 1 Corr. Area 1: 0.4
 Noise: 0.2

Peak table for sample 2 : sample 2

Peak	Size [bp]	Conc. [pg/μl]	Molarity [pmol/l]	Observations
1	35	125.00	5,411.3	Lower Marker
2	10,380	75.00	10.9	Upper Marker
3	11,424	0.00	0.0	

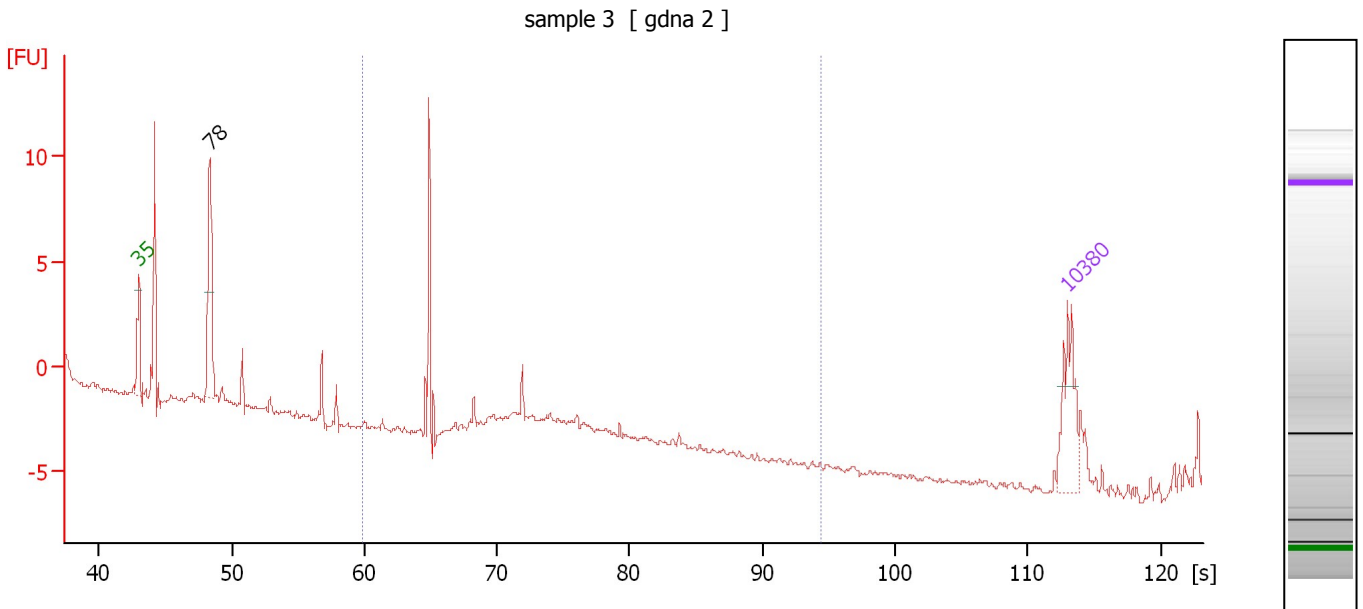
Region table for sample 2 : sample 2

From [s]	Molarity [pmol/l]	Average Size [bp]	Conc. [pg/μl]	To [s]	Corr. Area	% of Total	Size distribution in CV [%]	Color
59.81	3.3	596	1.18	94.40	0.4	2	21.6	Blue

Assay Class: High Sensitivity DNA Assay
 Data Path: C:\...t\2100 bioanalyzer\2100 expert\data\PDFs\2012-02-13_003.xad

Created: 2/13/2012 1:33:01 PM
 Modified: 2/13/2012 4:37:35 PM

Electropherogram Summary Continued ...



Overall Results for sample 3 : sample 3

Number of peaks found: 1 Corr. Area 1: 5.5
 Noise: 0.2

Peak table for sample 3 : sample 3

Peak	Size [bp]	Conc. [pg/μl]	Molarity [pmol/l]	Observations
1	35	125.00	5,411.3	Lower Marker
2	78	180.06	3,491.5	
3	10,380	75.00	10.9	Upper Marker

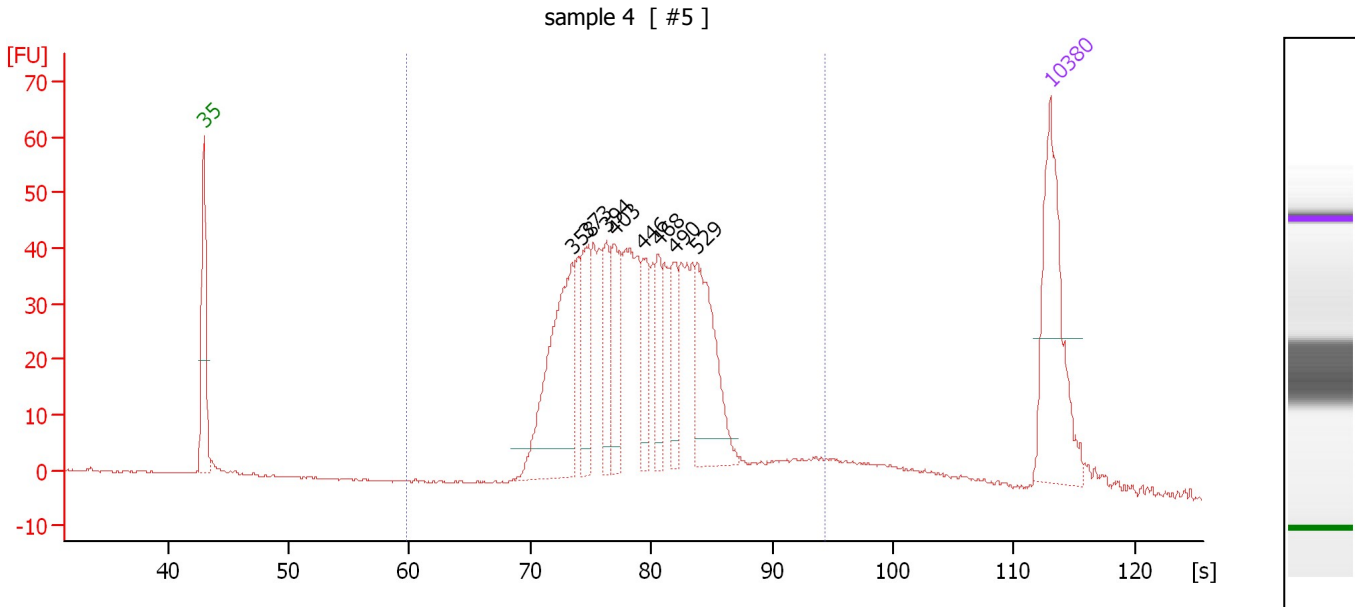
Region table for sample 3 : sample 3

From [s]	Molarity [pmol/l]	Average Size [bp]	Conc. [pg/μl]	To [s]	Corr. Area	% of Total	Size distribution in CV [%]	Color
59.81	446.1	270	78.18	94.40	5.5	23	11.6	Blue

Assay Class: High Sensitivity DNA Assay
 Data Path: C:\...t\2100 bioanalyzer\2100 expert\data\PDFs\2012-02-13_003.xad

Created: 2/13/2012 1:33:01 PM
 Modified: 2/13/2012 4:37:35 PM

Electropherogram Summary Continued ...



Overall Results for sample 4 : sample 4

Number of peaks found: 8 Corr. Area 1: 819.8
 Noise: 0.1

Peak table for sample 4 : sample 4

Peak	Size [bp]	Conc. [pg/μl]	Molarity [pmol/l]	Observations
1	35	125.00	5,411.3	Lower Marker
2	358	129.38	547.2	
3	373	43.95	178.4	
4	394	37.51	144.1	
5	403	43.45	163.3	
6	446	30.92	105.0	
7	468	30.36	98.4	
8	490	31.07	96.0	
9	529	81.71	234.1	
10	10,380	75.00	10.9	Upper Marker

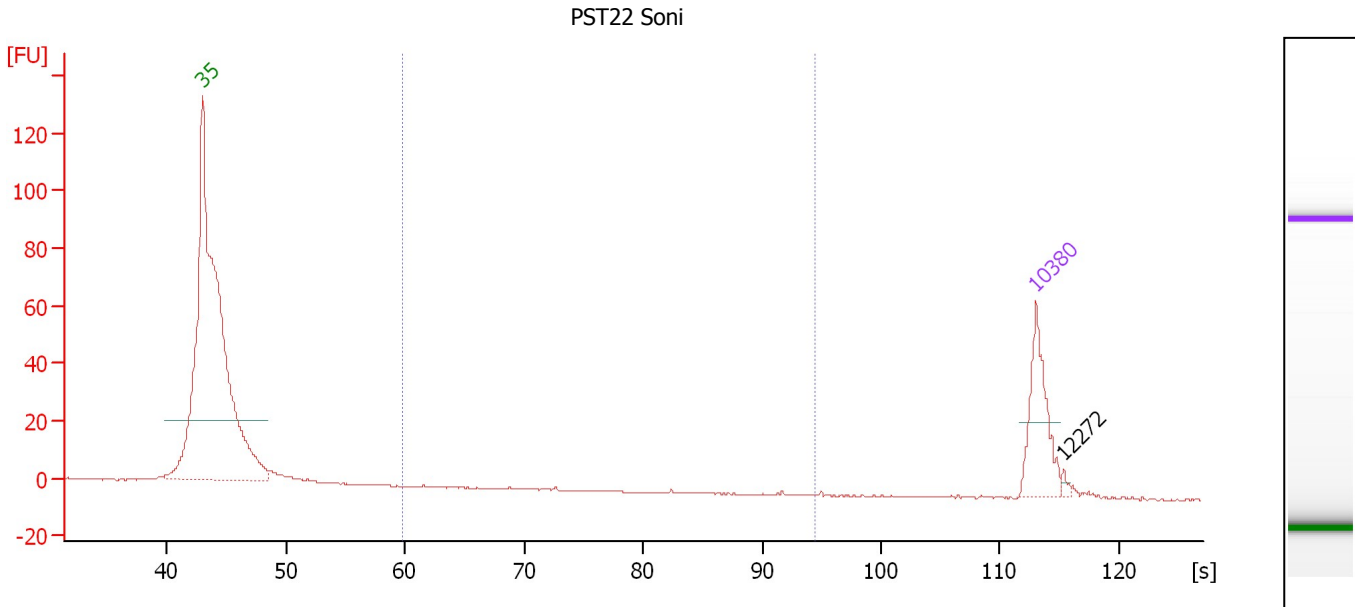
Region table for sample 4 : sample 4

From [s]	Molarity [pmol/l]	Average Size [bp]	Conc. [pg/μl]	To [s]	Corr. Area	% of Total	Size distribution in CV [%]	Color
59.81	2,723.6	455	773.10	94.40	819.8	91	23.4	Blue

Assay Class: High Sensitivity DNA Assay
 Data Path: C:\...t\2100 bioanalyzer\2100 expert\data\PDFs\2012-02-13_003.xad

Created: 2/13/2012 1:33:01 PM
 Modified: 2/13/2012 4:37:35 PM

Electropherogram Summary Continued ...



Overall Results for sample 5 : PST22 Soni

Number of peaks found: 1 Corr. Area 1: 0.1
 Noise: 0.2

Peak table for sample 5 : PST22 Soni

Peak	Size [bp]	Conc. [pg/μl]	Molarity [pmol/l]	Observations
1	35	125.00	5,411.3	Lower Marker
2	10,380	75.00	10.9	Upper Marker
3	12,272	0.00	0.0	

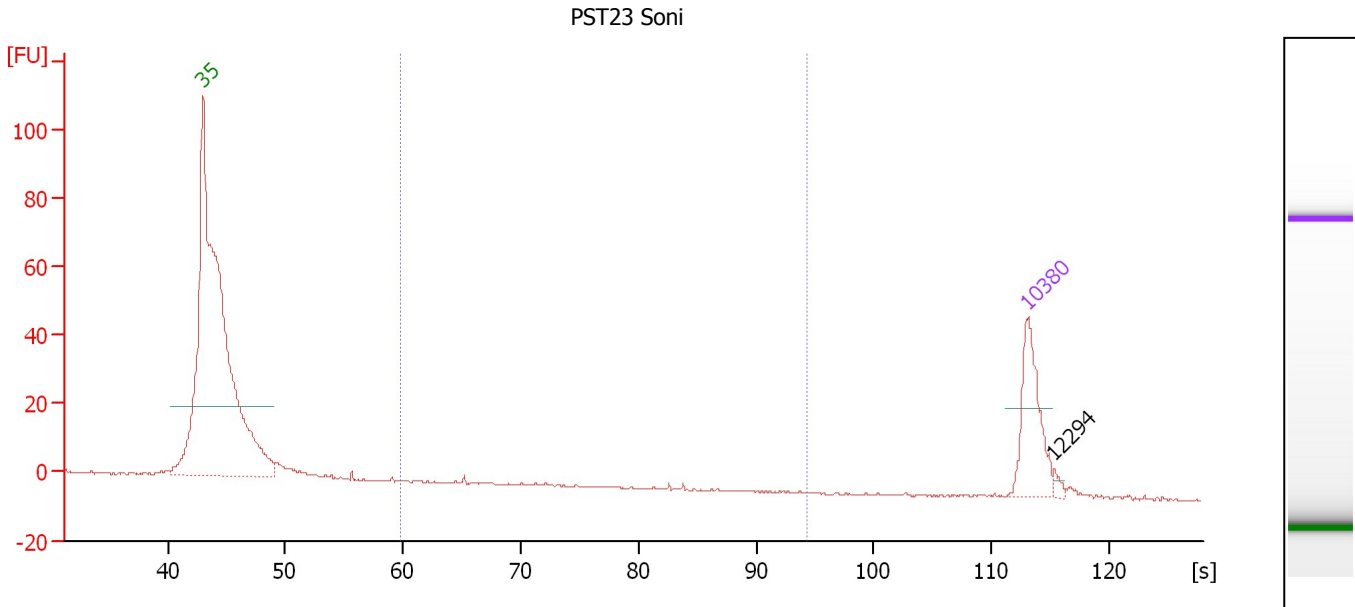
Region table for sample 5 : PST22 Soni

From [s]	Molarity [pmol/l]	Average Size [bp]	Conc. [pg/μl]	To [s]	Corr. Area	% of Total	Size distribution in CV [%]	Color
59.81	0.5	506	0.13	94.40	0.1	0	39.9	Blue

Assay Class: High Sensitivity DNA Assay
 Data Path: C:\...t\2100 bioanalyzer\2100 expert\data\PDFs\2012-02-13_003.xad

Created: 2/13/2012 1:33:01 PM
 Modified: 2/13/2012 4:37:35 PM

Electropherogram Summary Continued ...



Overall Results for sample 6 : PST23 Soni

Number of peaks found: 1 Corr. Area 1: 1.0
 Noise: 0.2

Peak table for sample 6 : PST23 Soni

Peak	Size [bp]	Conc. [pg/μl]	Molarity [pmol/l]	Observations
1	35	125.00	5,411.3	Lower Marker
2	10,380	75.00	10.9	Upper Marker
3	12,294	0.00	0.0	

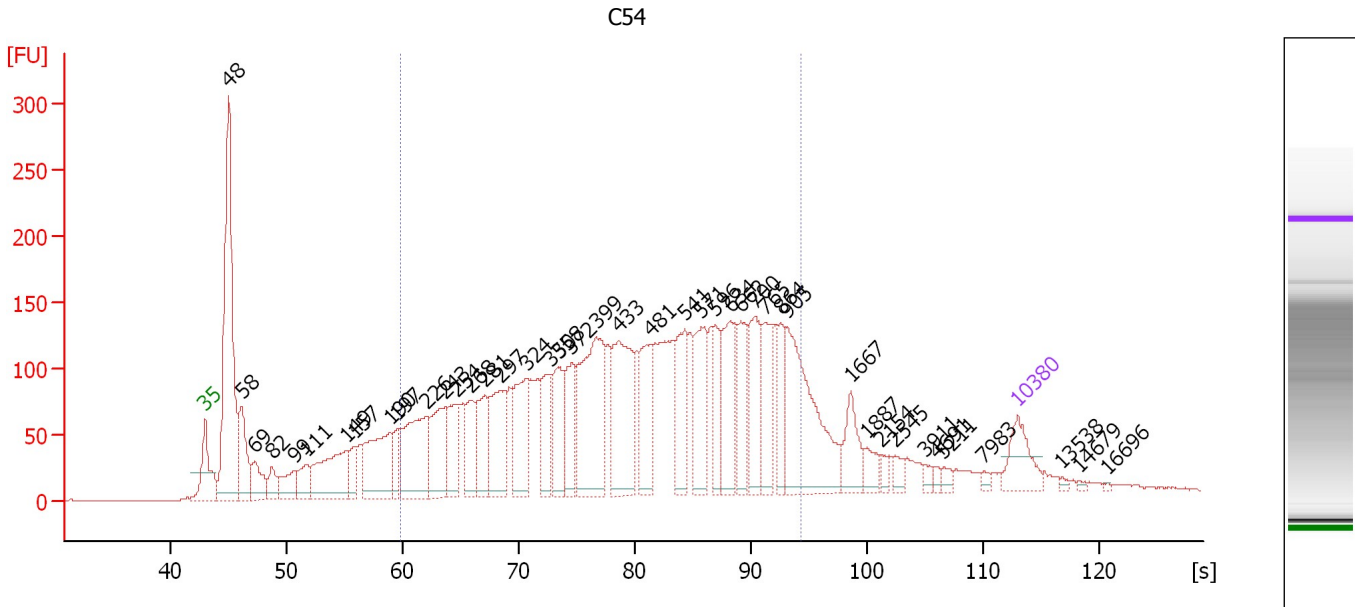
Region table for sample 6 : PST23 Soni

From [s]	Molarity [pmol/l]	Average Size [bp]	Conc. [pg/μl]	To [s]	Corr. Area	% of Total	Size distribution in CV [%]	Color
59.81	6.7	368	1.37	94.40	1.0	3	33.9	Blue

Assay Class: High Sensitivity DNA Assay
 Data Path: C:\...t\2100 bioanalyzer\2100 expert\data\PDFs\2012-02-13_003.xad

Created: 2/13/2012 1:33:01 PM
 Modified: 2/13/2012 4:37:35 PM

Electropherogram Summary Continued ...



Overall Results for sample 7 : C54

Number of peaks found: 43 Corr. Area 1: 4,518.4
 Noise: 0.2

Peak table for sample 7 : C54

Peak	Size [bp]	Conc. [pg/μl]	Molarity [pmol/l]	Observations
1	35	125.00	5,411.3	Lower Marker
2	48	866.94	27,155.0	
3	58	184.02	4,813.0	
4	69	98.19	2,169.9	
5	82	59.34	1,099.8	
6	99	87.78	1,340.9	
7	111	82.17	1,119.7	
8	149	259.59	2,645.6	
9	157	63.71	615.5	
10	190	267.53	2,132.7	
11	197	69.25	532.0	
12	226	282.37	1,896.7	
13	243	205.00	1,280.4	
14	254	137.36	819.6	
15	268	119.18	672.8	
16	281	149.87	807.3	
17	297	203.79	1,040.5	
18	324	202.05	944.2	
19	350	136.36	589.8	
20	358	147.04	621.5	
21	372	139.42	567.3	
22	399	384.12	1,458.3	
23	433	293.69	1,027.4	
24	481	161.63	508.6	
25	541	167.59	469.3	
26	571	170.03	451.1	

Assay Class: High Sensitivity DNA Assay
 Data Path: C:\...t\2100 bioanalyzer\2100 expert\data\PDFs\2012-02-13_003.xad


Created: 2/13/2012 1:33:01 PM
 Modified: 2/13/2012 4:37:35 PM

Electropherogram Summary Continued ...

... Peak table for sample 7 : C54

Peak	Size [bp]	Conc. [pg/μl]	Molarity [pmol/l]	Observations
27	596	89.71	227.9	
28	634	155.96	372.7	
29	662	124.96	286.1	
30	700	167.09	361.7	
31	765	132.67	262.9	
32	864	88.46	155.2	
33	905	352.55	590.5	
34	1,667	82.76	75.2	
35	1,887	32.99	26.5	
36	2,154	15.03	10.6	
37	2,545	20.52	12.2	
38	3,911	13.21	5.1	
39	4,691	9.72	3.1	
40	5,211	12.61	3.7	
41	7,983	7.99	1.5	
42	10,380	75.00	10.9	Upper Marker
43	13,538	0.00	0.0	
44	14,679	0.00	0.0	
45	16,696	0.00	0.0	

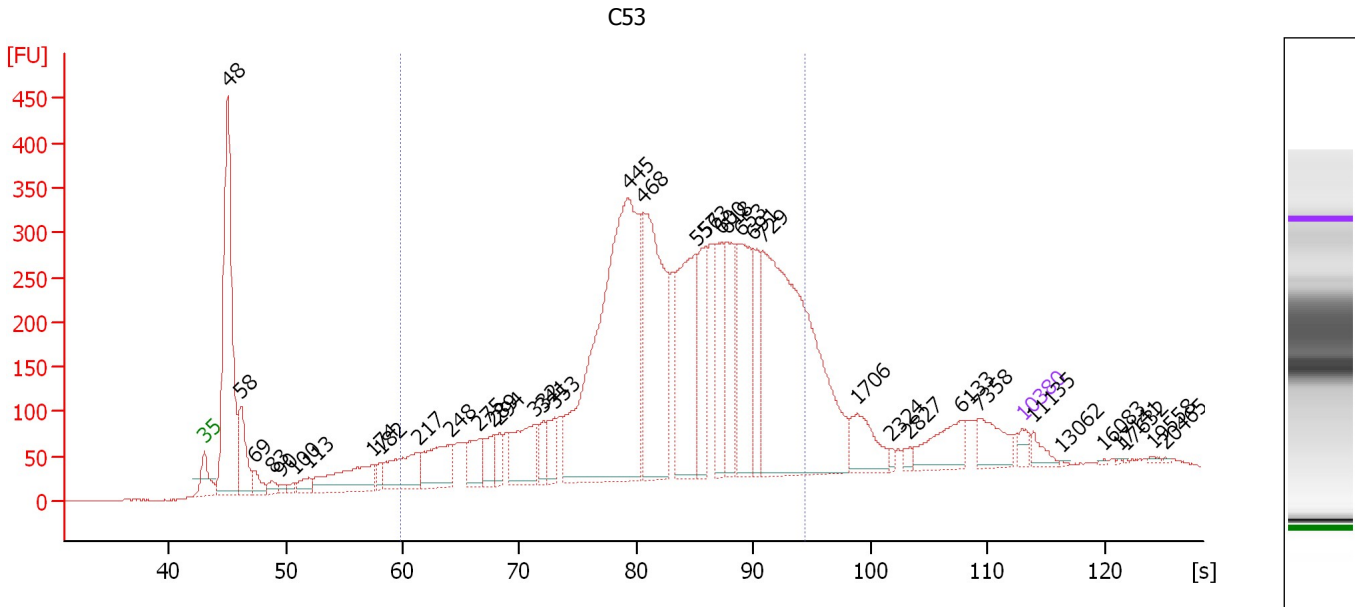
Region table for sample 7 : C54

From [s]	Molarity [pmol/l]	Average Size [bp]	Conc. [pg/μl]	To [s]	Corr. Area	% of Total	Size distribution in CV [%]	Color
59.81	18,563.1	492	4,781.09	94.40	4,518.4	69	39.4	

Assay Class: High Sensitivity DNA Assay
 Data Path: C:\...t\2100 bioanalyzer\2100 expert\data\PDFs\2012-02-13_003.xad

Created: 2/13/2012 1:33:01 PM
 Modified: 2/13/2012 4:37:35 PM

Electropherogram Summary Continued ...



Overall Results for sample 8 : C53

Number of peaks found: 38 Corr. Area 1: 7,040.0
 Noise: 0.6

Peak table for sample 8 : C53


Peak	Size [bp]	Conc. [pg/μl]	Molarity [pmol/l]	Observations
1	35	125.00	5,411.3	Lower Marker
2	48	3,740.46	117,396.0	
3	58	689.87	17,977.3	
4	69	187.26	4,104.9	
5	83	108.85	1,995.8	
6	90	52.53	886.1	
7	100	62.88	948.5	
8	113	174.34	2,337.5	
9	174	803.85	7,017.1	
10	182	116.26	969.5	
11	217	666.65	4,657.8	
12	248	667.81	4,078.3	
13	275	375.64	2,067.8	
14	289	286.77	1,505.7	
15	294	169.17	872.8	
16	332	689.60	3,146.4	
17	341	193.20	859.1	
18	353	265.42	1,139.8	
19	445	4,883.39	16,633.3	
20	468	2,261.52	7,315.0	
21	556	1,486.15	4,050.1	
22	573	709.42	1,874.9	
23	600	661.24	1,668.9	
24	618	662.55	1,624.9	
25	653	1,053.84	2,446.2	
26	691	465.16	1,020.6	

Assay Class: High Sensitivity DNA Assay
 Data Path: C:\...t\2100 bioanalyzer\2100 expert\data\PDFs\2012-02-13_003.xad


Created: 2/13/2012 1:33:01 PM
 Modified: 2/13/2012 4:37:35 PM

Electropherogram Summary Continued ...

... Peak table for sample 8 : C53

Peak	Size [bp]	Conc. [pg/μl]	Molarity [pmol/l]	Observations
27	729	3,899.79	8,106.3	
28	1,706	362.97	322.4	
29	2,324	34.89	22.7	
30	2,827	48.49	26.0	
31	6,133	368.34	91.0	
32	7,358	301.10	62.0	
33	 10,380	75.00	10.9	Upper Marker
34	11,135	0.00	0.0	
35	13,062	0.00	0.0	
36	16,083	0.00	0.0	
37	17,141	0.00	0.0	
38	17,632	0.00	0.0	
39	19,558	0.00	0.0	
40	20,465	0.00	0.0	

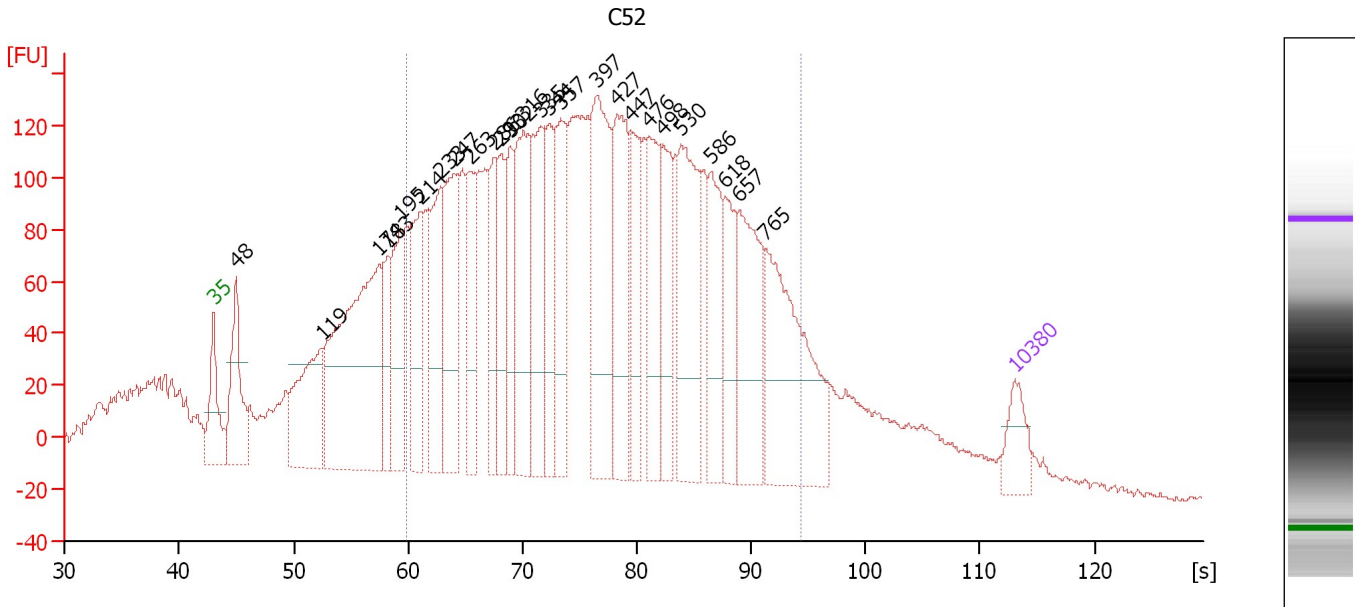
Region table for sample 8 : C53

From [s]	Molarity [pmol/l]	Average Size [bp]	Conc. [pg/μl]	To [s]	Corr. Area % of Total	Size distribution in CV [%]	Color
59.81	66,807.8	540	20,012.71	94.40	7,040.0	71	32.8 

Assay Class: High Sensitivity DNA Assay
 Data Path: C:\...t\2100 bioanalyzer\2100 expert\data\PDFs\2012-02-13_003.xad

Created: 2/13/2012 1:33:01 PM
 Modified: 2/13/2012 4:37:35 PM

Electropherogram Summary Continued ...



Setpoint Deviations for sample 9 : C52

Height Threshold [FU] : 40

Overall Results for sample 9 : C52

Number of peaks found: 26 Corr. Area 1: 5,146.4
 Noise: 1.6

Peak table for sample 9 : C52

Peak	Size [bp]	Conc. [pg/μl]	Molarity [pmol/l]	Observations
1	35	125.00	5,411.3	Lower Marker
2	48	326.18	10,306.2	
3	119	437.71	5,559.9	
4	174	1,041.24	9,067.8	
5	183	191.44	1,586.8	
6	195	300.81	2,334.3	
7	214	314.60	2,232.3	
8	233	337.50	2,190.7	
9	247	392.89	2,409.7	
10	263	248.30	1,431.9	
11	286	202.32	1,070.7	
12	293	230.35	1,192.9	
13	302	215.80	1,083.9	
14	316	408.03	1,954.0	
15	335	371.95	1,681.1	
16	344	211.31	930.6	
17	357	298.02	1,264.7	
18	397	503.53	1,921.4	
19	427	350.13	1,243.5	
20	447	243.30	823.9	
21	476	277.57	884.1	
22	498	245.26	746.0	

Assay Class: High Sensitivity DNA Assay
 Data Path: C:\...t\2100 bioanalyzer\2100 expert\data\PDFs\2012-02-13_003.xad

Created: 2/13/2012 1:33:01 PM
 Modified: 2/13/2012 4:37:35 PM

Electropherogram Summary Continued ...

... Peak table for sample 9 : C52

Peak	Size [bp]	Conc. [pg/μl]	Molarity [pmol/l]	Observations
23	530	418.81	1,196.7	
24	586	227.09	586.9	
25	618	178.07	436.6	
26	657	342.76	790.9	
27	765	528.48	1,046.4	
28	10,380	75.00	10.9	Upper Marker

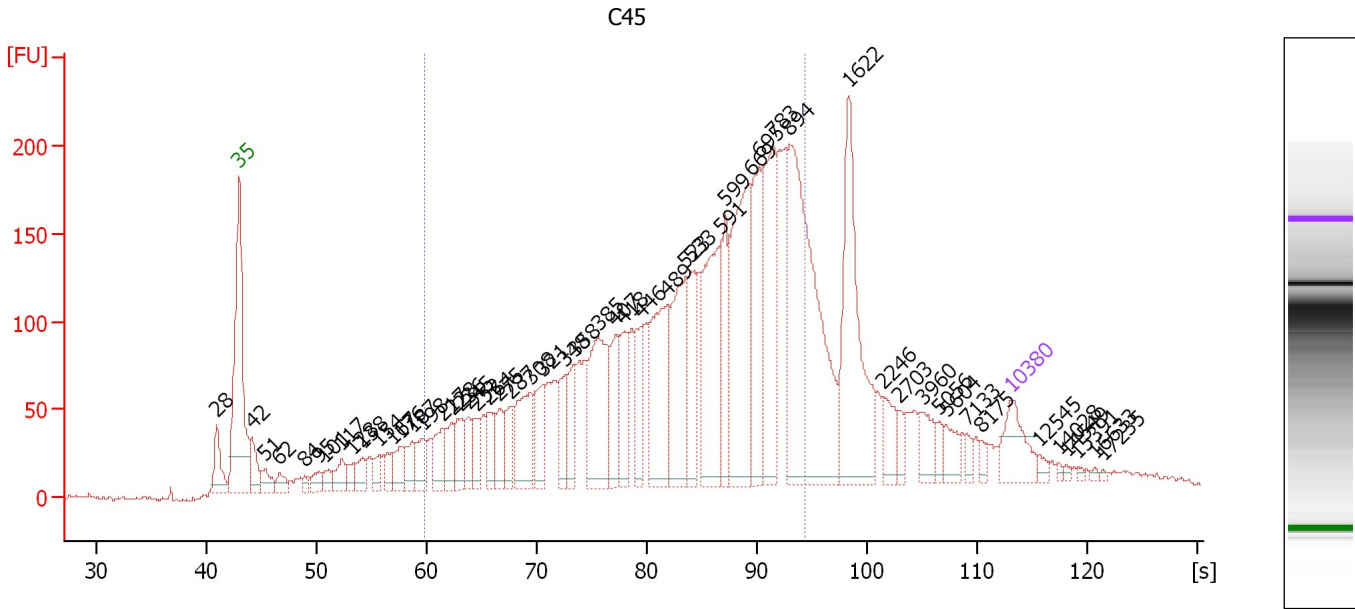
Region table for sample 9 : C52

From [s]	Molarity [pmol/l]	Average Size [bp]	Conc. [pg/μl]	To [s]	Corr. Area % of Total	Size distribution in CV [%]	Color
59.81	32,574.6	437	7,645.49	94.40	5,146.4	71	39.5

Assay Class: High Sensitivity DNA Assay
 Data Path: C:\...t\2100 bioanalyzer\2100 expert\data\PDFs\2012-02-13_003.xad

Created: 2/13/2012 1:33:01 PM
 Modified: 2/13/2012 4:37:35 PM

Electropherogram Summary Continued ...



Overall Results for sample 10 : C45

Number of peaks found: 54 Corr. Area 1: 3,922.4
 Noise: 1.4

Peak table for sample 10 : C45


Peak	Size [bp]	Conc. [pg/μl]	Molarity [pmol/l]	Observations
1	28	0.00	0.0	
2	35	125.00	5,411.3	Lower Marker
3	42	84.88	3,035.6	
4	51	45.77	1,372.8	
5	62	32.81	799.6	
6	84	16.77	303.7	
7	95	33.28	528.9	
8	101	29.65	445.5	
9	117	54.24	703.3	
10	128	32.66	388.0	
11	138	48.03	528.6	
12	154	34.94	343.2	
13	167	39.52	358.2	
14	176	60.38	520.4	
15	187	55.09	446.1	
16	198	70.15	537.1	
17	217	86.88	605.4	
18	228	64.79	431.0	
19	236	76.62	491.0	
20	245	56.54	350.2	
21	252	55.40	333.6	
22	264	65.85	377.7	
23	275	74.65	411.2	
24	287	62.29	328.8	
25	308	160.20	788.1	
26	321	95.26	449.0	

Assay Class: High Sensitivity DNA Assay
 Data Path: C:\...t\2100 bioanalyzer\2100 expert\data\PDFs\2012-02-13_003.xad


Created: 2/13/2012 1:33:01 PM
 Modified: 2/13/2012 4:37:35 PM

Electropherogram Summary Continued ...

... Peak table for sample 10 : C45

Peak	Size [bp]	Conc. [pg/µl]	Molarity [pmol/l]	Observations
27	348	84.10	366.4	
28	358	78.17	331.3	
29	385	240.12	944.9	
30	407	99.69	371.6	
31	418	115.52	419.0	
32	446	91.96	312.2	
33	489	248.35	768.9	
34	523	239.50	693.6	
35	533	135.52	384.9	
36	591	282.37	724.4	
37	599	105.33	266.5	
38	669	379.36	859.0	
39	695	202.01	440.1	
40	783	273.53	529.4	
41	894	609.00	1,031.9	
42	1,622	320.25	299.1	
43	2,246	50.91	34.4	
44	2,703	20.89	11.7	
45	3,960	44.05	16.9	
46	5,056	19.85	5.9	
47	5,604	36.18	9.8	
48	7,133	14.03	3.0	
49	8,175	12.62	2.3	
50	 10,380	75.00	10.9	Upper Marker
51	12,545	0.00	0.0	
52	14,028	0.00	0.0	
53	14,549	0.00	0.0	
54	15,391	0.00	0.0	
55	16,633	0.00	0.0	
56	17,235	0.00	0.0	

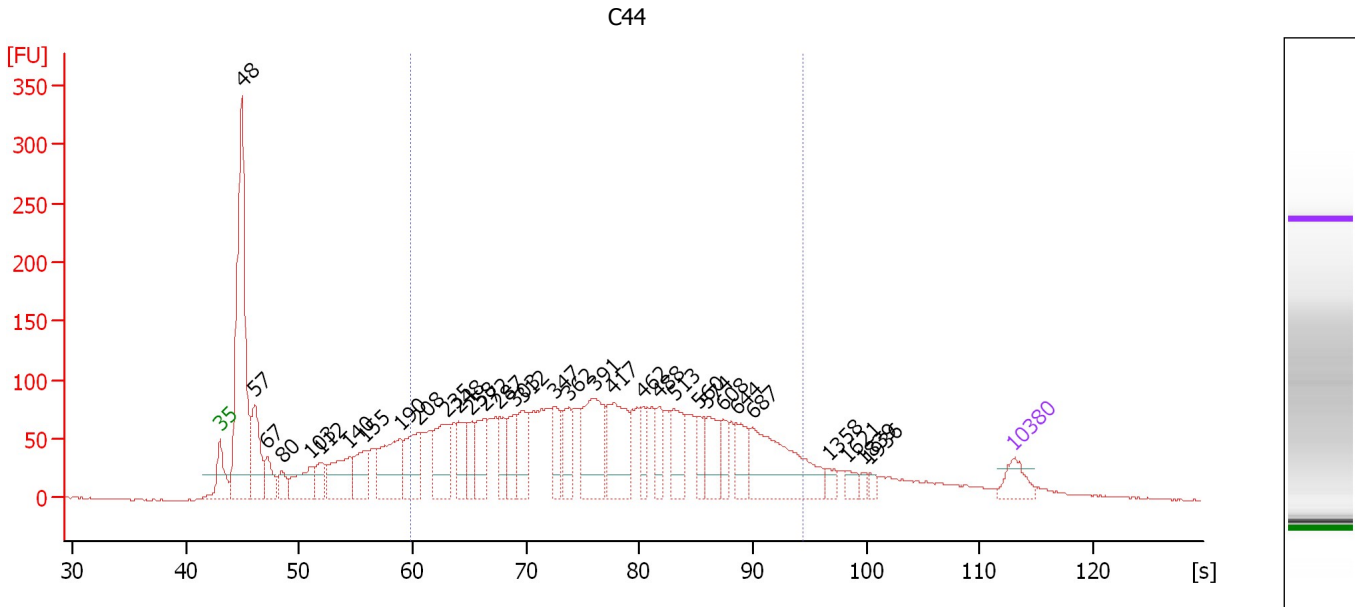
Region table for sample 10 : C45

From [s]	Molarity [pmol/l]	Average Size [bp]	Conc. [pg/µl]	To [s]	Corr. Area % of Total	Size distribution in CV [%]	Color
59.81	15,648.5	552	4,531.47	94.40	3,922.4	70	36.9 

Assay Class: High Sensitivity DNA Assay
 Data Path: C:\...t\2100 bioanalyzer\2100 expert\data\PDFs\2012-02-13_003.xad

Created: 2/13/2012 1:33:01 PM
 Modified: 2/13/2012 4:37:35 PM

Electropherogram Summary Continued ...



Setpoint Deviations for sample 11 : C44

Height Threshold [FU] : 20

Overall Results for sample 11 : C44

Number of peaks found: 33 Corr. Area 1: 3,041.5
 Noise: 0.8

Peak table for sample 11 : C44

Peak	Size [bp]	Conc. [pg/μl]	Molarity [pmol/l]	Observations
1	35	125.00	5,411.3	Lower Marker
2	48	1,498.12	47,531.4	
3	57	350.64	9,341.5	
4	67	139.63	3,142.5	
5	80	90.04	1,715.8	
6	103	214.65	3,154.9	
7	112	121.84	1,649.8	
8	140	285.64	3,082.2	
9	155	210.65	2,059.4	
10	190	386.33	3,088.7	
11	208	255.68	1,863.3	
12	235	284.67	1,836.7	
13	248	164.26	1,005.5	
14	258	124.82	732.8	
15	272	202.49	1,126.5	
16	287	122.97	648.9	
17	303	155.42	776.3	
18	312	204.42	993.8	
19	347	152.72	667.4	
20	362	155.68	652.4	
21	391	362.72	1,406.8	
22	417	328.84	1,194.8	

Assay Class: High Sensitivity DNA Assay
 Data Path: C:\...t\2100 bioanalyzer\2100 expert\data\PDFs\2012-02-13_003.xad


Created: 2/13/2012 1:33:01 PM
 Modified: 2/13/2012 4:37:35 PM

Electropherogram Summary Continued ...

... Peak table for sample 11 : C44

Peak	Size [bp]	Conc. [pg/µl]	Molarity [pmol/l]	Observations
23	462	102.71	336.6	
24	488	113.77	353.0	
25	513	167.01	493.3	
26	560	76.03	205.9	
27	574	167.98	443.0	
28	608	84.32	210.2	
29	644	133.56	314.3	
30	687	475.81	1,048.7	
31	1,358	36.53	40.8	
32	1,621	37.24	34.8	
33	1,839	19.12	15.8	
34	1,936	21.14	16.5	
35	▶ 10,380	75.00	10.9	Upper Marker

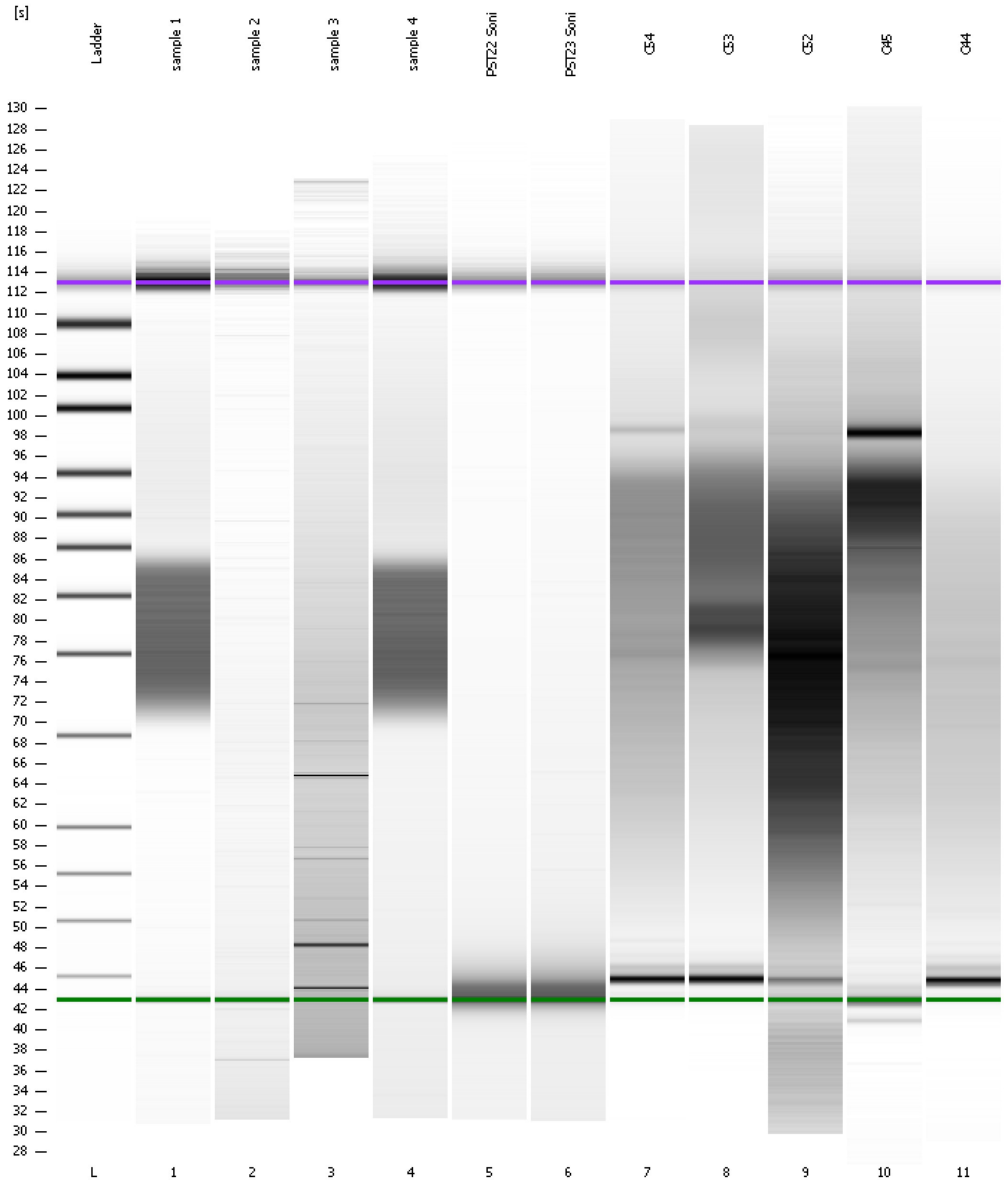
Region table for sample 11 : C44

From [s]	Molarity [pmol/l]	Average Size [bp]	Conc. [pg/µl]	To [s]	Corr. Area	% of Total	Size distribution in CV [%]	Color
59.81	22,096.1	438	5,193.14	94.40	3,041.5	62	39.6	

Assay Class: High Sensitivity DNA Assay
Data Path: C:\...t\2100 bioanalyzer\2100 expert\data\PDFs\2012-02-13_003.xad

Created: 2/13/2012 1:33:01 PM
Modified: 2/13/2012 4:37:35 PM

Gel Image



Assay Class: High Sensitivity DNA Assay
 Data Path: C:\...t\2100 bioanalyzer\2100 expert\data\PDFs\2012-02-13_003.xad

Created: 2/13/2012 1:33:01 PM
 Modified: 2/13/2012 4:37:35 PM

Run Logbook

Description	Number	Source	Category	Sub Category	Time	Time Zone	User	Host
Run ended on port 1 (Number of wells acquired: 12)		Instrument	Run		2/13/2012 2:14:21 PM	(GMT --08:00) Pacific Standard Time	UC Davis	D8XSMGH1
Run started on port 1 (File: C:\Program Files\Agilent\2100 bioanalyzer\2100 expert\data\PDFs\2012-02-13_003.xad)		Instrument	Run		2/13/2012 1:33:07 PM	(GMT --08:00) Pacific Standard Time	UC Davis	D8XSMGH1
Product Number : G2938B		Instrument	Run		2/13/2012 1:33:07 PM	(GMT --08:00) Pacific Standard Time	UC Davis	D8XSMGH1
Name :		Instrument	Run		2/13/2012 1:33:07 PM	(GMT --08:00) Pacific Standard Time	UC Davis	D8XSMGH1
Vendor : Agilent Technologies		Instrument	Run		2/13/2012 1:33:07 PM	(GMT --08:00) Pacific Standard Time	UC Davis	D8XSMGH1
Serial# : DE13701086		Instrument	Run		2/13/2012 1:33:07 PM	(GMT --08:00) Pacific Standard Time	UC Davis	D8XSMGH1
Firmware : C.01.069		Instrument	Run		2/13/2012 1:33:07 PM	(GMT --08:00) Pacific Standard Time	UC Davis	D8XSMGH1
Cartridge : Electrode		Instrument	Run		2/13/2012 1:33:07 PM	(GMT --08:00) Pacific Standard Time	UC Davis	D8XSMGH1