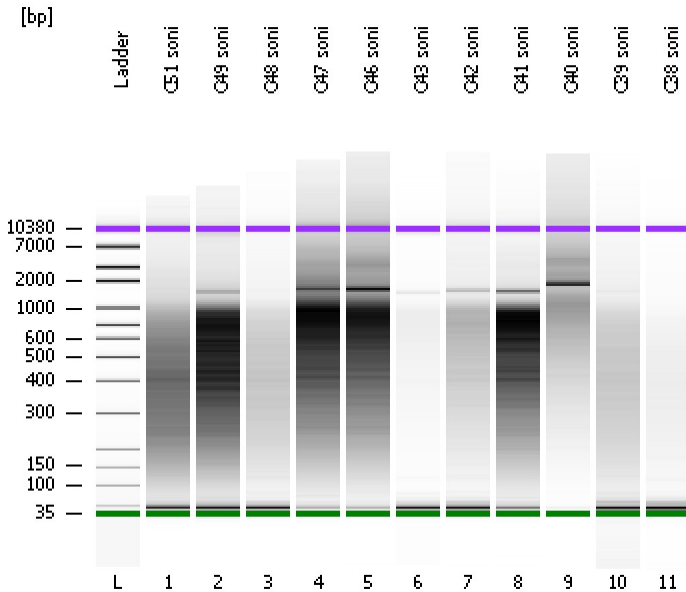


Assay Class: High Sensitivity DNA Assay  
Data Path: C:\...t\2100 bioanalyzer\2100 expert\data\PDFs\2012-02-13\_005.xad

Created: 2/13/2012 3:52:04 PM  
Modified: 2/13/2012 4:33:21 PM

Electrophoresis File Run Summary



Instrument Information:

Instrument Name: DE13701086      Firmware: C.01.069  
Serial#: DE13701086      Type: G2938B

Assay Information:

Assay Origin Path: C:\Program Files\Agilent\2100 bioanalyzer\2100 expert\assays\dsDNA\High Sensitivity DNA.xsy  
Assay Class: High Sensitivity DNA Assay  
Version: 1.03  
Assay Comments: Copyright © 2003-2010 Agilent Technologies

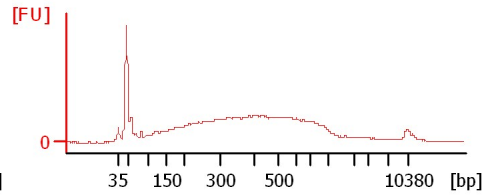
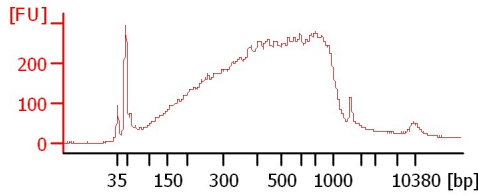
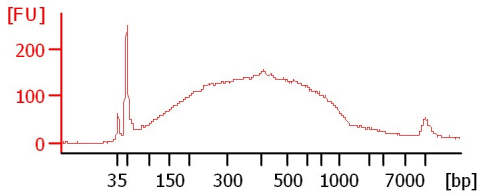
Chip Information:

Chip Lot #:   
Reagent Kit Lot #:   
Chip Comments:

C51 soni

C49 soni

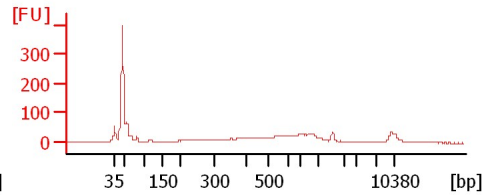
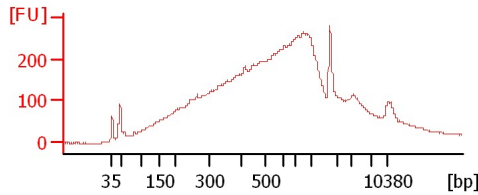
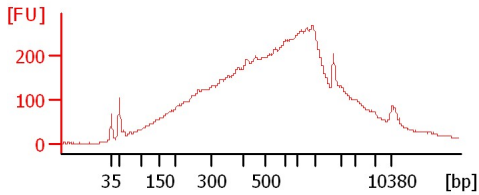
C48 soni



C47 soni

C46 soni

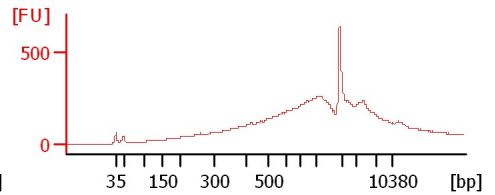
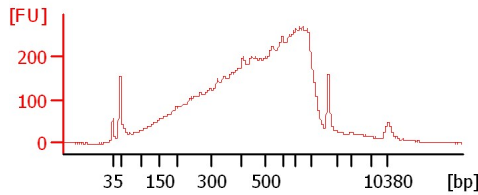
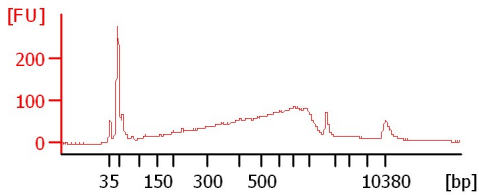
C43 soni



C42 soni

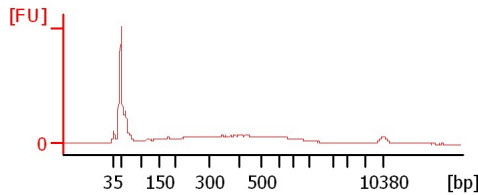
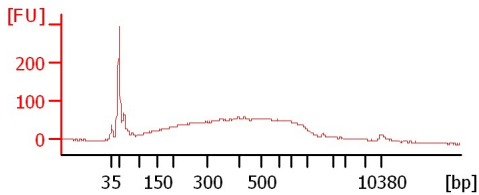
C41 soni

C40 soni



C39 soni

C38 soni



Assay Class: High Sensitivity DNA Assay  
 Data Path: C:\...t\2100 bioanalyzer\2100 expert\data\PDFs\2012-02-13\_005.xad

Created: 2/13/2012 3:52:04 PM  
 Modified: 2/13/2012 4:33:21 PM

**Electrophoresis File Run Summary (Chip Summary)**

Sample Name	Sample Comment	Rest. Digest	Status	Observation	Result Label	Result Color
C51 soni		<input type="checkbox"/>	✓			
C49 soni		<input type="checkbox"/>	✓			
C48 soni		<input type="checkbox"/>	✓			
C47 soni		<input type="checkbox"/>	✓			
C46 soni		<input type="checkbox"/>	✓			
C43 soni		<input type="checkbox"/>	✓			
C42 soni		<input type="checkbox"/>	✓			
C41 soni		<input type="checkbox"/>	✓			
C40 soni		<input type="checkbox"/>	✓			
C39 soni		<input type="checkbox"/>	✓			
C38 soni		<input type="checkbox"/>	✓			
Ladder		<input type="checkbox"/>	✓			

**Chip Lot #**

**Reagent Kit Lot #**

**Chip Comments :**

Assay Class: High Sensitivity DNA Assay  
Data Path: C:\...t\2100 bioanalyzer\2100 expert\data\PDFs\2012-02-13\_005.xad

Created: 2/13/2012 3:52:04 PM  
Modified: 2/13/2012 4:33:21 PM

**Electrophoresis Assay Details**

**General Analysis Settings**

Number of Available Sample and Ladder Wells (Max.) : 12  
Minimum Visible Range [s] : 32  
Maximum Visible Range [s] : 138  
Start Analysis Time Range [s] : 33  
End Analysis Time Range [s] : 137.5  
Ladder Concentration [pg/μl] : 1950  
Uses Standard Area for Ladder Fragments  
Lower Marker Concentration [pg/μl] : 125  
Upper Marker Concentration [pg/μl] : 75  
Used Upper Marker for Quantitation  
Standard Curve Fit is Point to Point  
Show Data Aligned to Lower and Upper Marker

**Integrator Settings**

Integration Start Time [s] : 33.05  
Integration End Time [s] : 137  
Slope Threshold : 0.8  
Height Threshold [FU] : 5  
Area Threshold : 0.1  
Width Threshold [s] : 0.6  
Baseline Plateau [s] : 0.5

**Filter Settings**

Filter Width [s] : 0.5  
Polynomial Order : 4

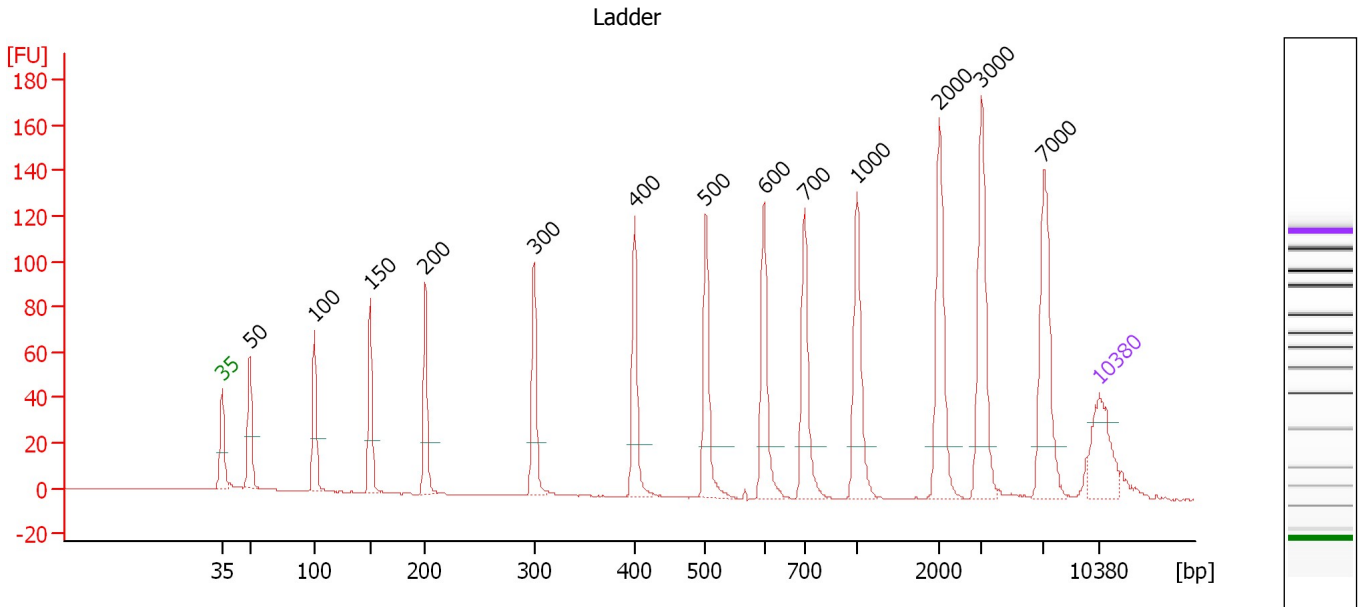
**Ladder**

Ladder Peak	Size	Area
1	35	160
2	50	210
3	100	208
4	150	221
5	200	242
6	300	270
7	400	305
8	500	306
9	600	336
10	700	321
11	1000	366
12	2000	413
13	3000	411
14	7000	400
15	10380	214

Assay Class: High Sensitivity DNA Assay  
 Data Path: C:\...t\2100 bioanalyzer\2100 expert\data\PDFs\2012-02-13\_005.xad

Created: 2/13/2012 3:52:04 PM  
 Modified: 2/13/2012 4:33:21 PM

**Electropherogram Summary**



**Overall Results for Ladder**

Noise: 0.1

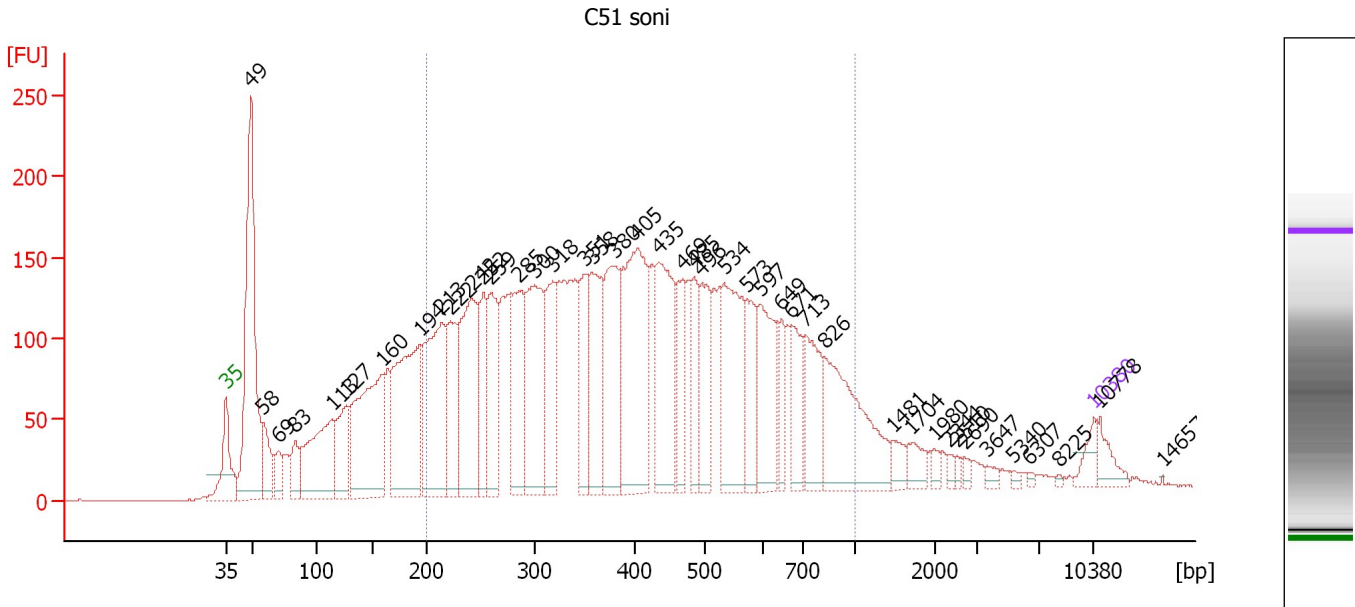
**Peak table for Ladder**

Peak	Size [bp]	Conc. [pg/μl]	Molarity [pmol/l]	Observations
1	35	125.00	5,411.3	Lower Marker
2	50	150.00	4,545.5	Ladder Peak
3	100	150.00	2,272.7	Ladder Peak
4	150	150.00	1,515.2	Ladder Peak
5	200	150.00	1,136.4	Ladder Peak
6	300	150.00	757.6	Ladder Peak
7	400	150.00	568.2	Ladder Peak
8	500	150.00	454.5	Ladder Peak
9	600	150.00	378.8	Ladder Peak
10	700	150.00	324.7	Ladder Peak
11	1,000	150.00	227.3	Ladder Peak
12	2,000	150.00	113.6	Ladder Peak
13	3,000	150.00	75.8	Ladder Peak
14	7,000	150.00	32.5	Ladder Peak
15	10,380	75.00	10.9	Upper Marker

Assay Class: High Sensitivity DNA Assay  
 Data Path: C:\...t\2100 bioanalyzer\2100 expert\data\PDFs\2012-02-13\_005.xad

Created: 2/13/2012 3:52:04 PM  
 Modified: 2/13/2012 4:33:21 PM

**Electropherogram Summary Continued ...**



**Overall Results for sample 1 : C51 soni**

Number of peaks found: 43                      Corr. Area 1: 5,672.2  
 Noise: 0.2

**Peak table for sample 1 : C51 soni**


Peak	Size [bp]	Conc. [pg/μl]	Molarity [pmol/l]	Observations
1	35	125.00	5,411.3	Lower Marker
2	49	1,834.55	57,077.2	
3	58	284.01	7,452.7	
4	69	160.16	3,516.2	
5	83	197.06	3,606.3	
6	113	842.31	11,257.0	
7	127	423.60	5,059.9	
8	160	1,195.43	11,338.1	
9	194	1,216.62	9,521.8	
10	213	1,057.62	7,511.1	
11	222	513.34	3,507.2	
12	242	954.86	5,988.8	
13	252	387.02	2,322.6	
14	259	584.61	3,414.6	
15	285	609.95	3,240.8	
16	300	888.35	4,493.7	
17	318	467.63	2,229.8	
18	351	447.83	1,935.6	
19	358	573.57	2,427.0	
20	380	690.18	2,751.1	
21	405	1,133.79	4,246.7	
22	435	775.84	2,704.3	
23	469	330.61	1,069.0	
24	485	272.24	850.1	
25	496	402.90	1,231.3	
26	534	708.99	2,012.7	

Assay Class: High Sensitivity DNA Assay  
 Data Path: C:\...t\2100 bioanalyzer\2100 expert\data\PDFs\2012-02-13\_005.xad


Created: 2/13/2012 3:52:04 PM  
 Modified: 2/13/2012 4:33:21 PM

**Electropherogram Summary Continued ...**

**... Peak table for sample 1 : C51 soni**

Peak	Size [bp]	Conc. [pg/µl]	Molarity [pmol/l]	Observations
27	573	330.16	873.5	
28	597	483.02	1,226.4	
29	649	160.86	375.8	
30	671	271.38	612.7	
31	713	382.60	812.9	
32	826	762.57	1,398.1	
33	1,481	75.96	77.7	
34	1,704	89.64	79.7	
35	1,980	35.33	27.0	
36	2,344	22.10	14.3	
37	2,510	20.81	12.6	
38	2,690	22.34	12.6	
39	3,647	26.46	11.0	
40	5,340	16.43	4.7	
41	6,307	9.73	2.3	
42	8,225	7.23	1.3	
43	 10,380	75.00	10.9	Upper Marker
44	10,778	0.00	0.0	
45	14,657	0.00	0.0	

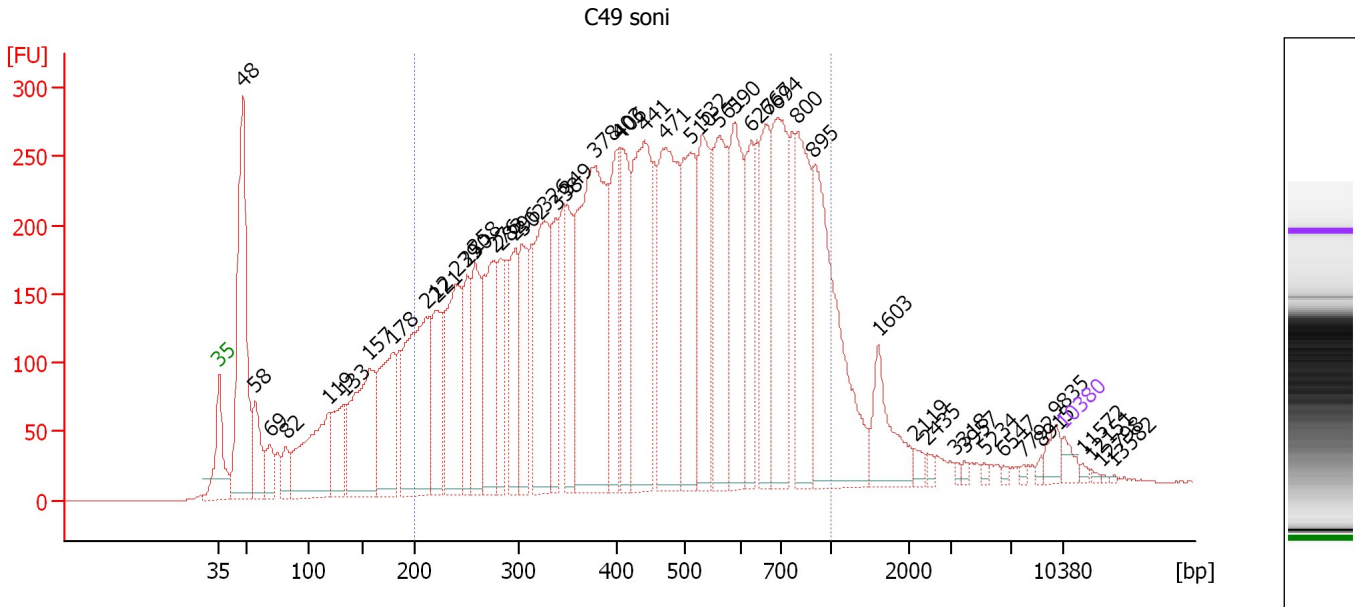
**Region table for sample 1 : C51 soni**

From [bp]	Molarity [pmol/l]	Average Size [bp]	Conc. [pg/µl]	To [bp]	Corr. Area	% of Total	Size distribution in CV [%]	Color
200	64,812.7	436	15,131.96	1,000	5,672.2	71	39.9	

Assay Class: High Sensitivity DNA Assay  
 Data Path: C:\...t\2100 bioanalyzer\2100 expert\data\PDFs\2012-02-13\_005.xad

Created: 2/13/2012 3:52:04 PM  
 Modified: 2/13/2012 4:33:21 PM

**Electropherogram Summary Continued ...**



**Overall Results for sample 2 : C49 soni**

Number of peaks found: 48                      Corr. Area 1: 9,746.0  
 Noise: 0.5

**Peak table for sample 2 : C49 soni**

Peak	Size [bp]	Conc. [pg/μl]	Molarity [pmol/l]	Observations
1	35	125.00	5,411.3	Lower Marker
2	48	2,765.81	86,453.4	
3	58	577.88	15,180.9	
4	69	325.99	7,131.9	
5	82	272.03	5,018.9	
6	119	1,376.08	17,530.2	
7	133	662.85	7,536.1	
8	157	1,575.43	15,191.6	
9	178	1,202.58	10,219.9	
10	212	1,928.70	13,806.9	
11	221	852.34	5,848.6	
12	239	1,331.46	8,436.4	
13	250	634.40	3,847.8	
14	258	904.26	5,311.4	
15	276	1,169.71	6,427.0	
16	282	638.49	3,426.0	
17	296	717.87	3,673.3	
18	302	766.36	3,839.8	
19	326	1,381.72	6,419.1	
20	338	647.75	2,905.9	
21	349	699.35	3,033.3	
22	378	2,921.15	11,707.9	
23	403	814.33	3,059.6	
24	406	920.23	3,431.1	
25	441	1,804.05	6,195.2	
26	471	1,957.60	6,291.7	

Assay Class: High Sensitivity DNA Assay  
 Data Path: C:\...t\2100 bioanalyzer\2100 expert\data\PDFs\2012-02-13\_005.xad


Created: 2/13/2012 3:52:04 PM  
 Modified: 2/13/2012 4:33:21 PM

**Electropherogram Summary Continued ...**

**... Peak table for sample 2 : C49 soni**

Peak	Size [bp]	Conc. [pg/µl]	Molarity [pmol/l]	Observations
27	510	1,255.82	3,733.7	
28	532	1,089.30	3,099.6	
29	561	1,249.52	3,374.5	
30	590	1,129.17	2,901.7	
31	627	711.17	1,717.4	
32	667	906.93	2,060.1	
33	694	1,406.50	3,069.2	
34	800	1,165.29	2,206.5	
35	895	1,799.38	3,047.8	
36	1,603	474.54	448.5	
37	2,119	61.60	44.0	
38	2,435	37.85	23.6	
39	3,318	21.78	9.9	
40	3,957	23.49	9.0	
41	5,234	22.82	6.6	
42	6,547	19.72	4.6	
43	7,792	19.53	3.8	
44	8,915	20.53	3.5	
45	9,835	109.05	16.8	
46	10,380	75.00	10.9	Upper Marker
47	11,572	0.00	0.0	
48	12,151	0.00	0.0	
49	12,798	0.00	0.0	
50	13,582	0.00	0.0	

**Region table for sample 2 : C49 soni**

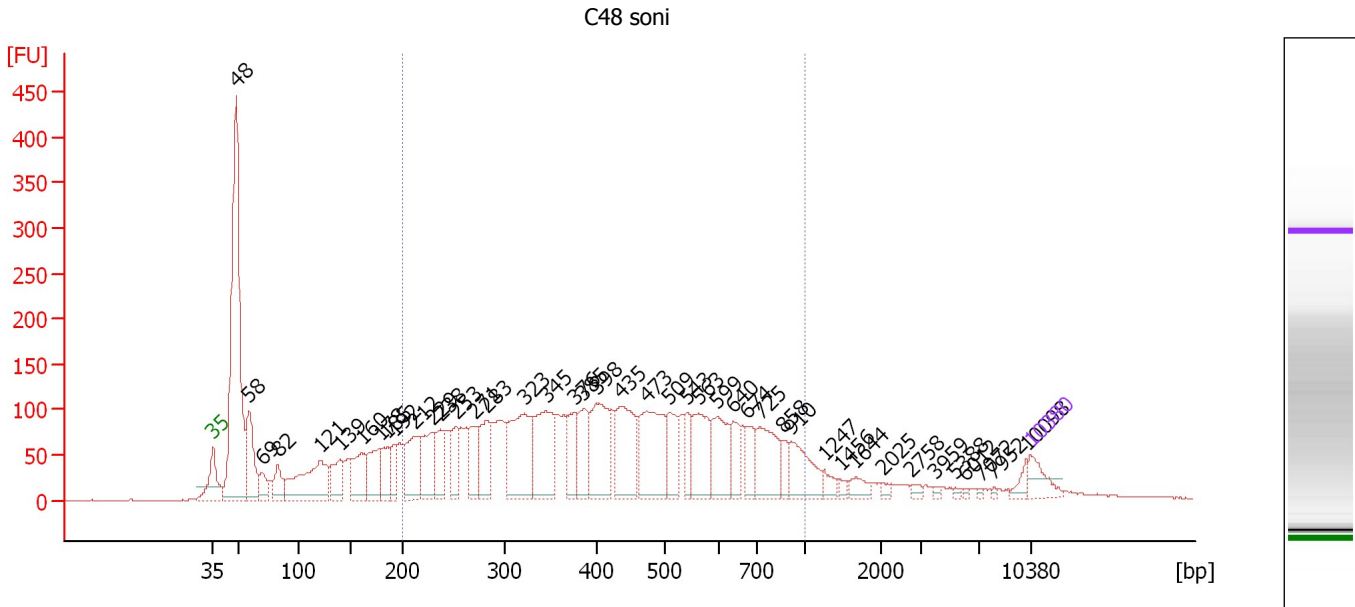
From [bp]	Molarity [pmol/l]	Average Size [bp]	Conc. [pg/µl]	To [bp]	Corr. Area	% of Total	Size distribution in CV [%]	Color
200	124,927.0	484	31,804.48	1,000	9,746.0	77	39.4	



Assay Class: High Sensitivity DNA Assay  
 Data Path: C:\...t\2100 bioanalyzer\2100 expert\data\PDFs\2012-02-13\_005.xad

Created: 2/13/2012 3:52:04 PM  
 Modified: 2/13/2012 4:33:21 PM

**Electropherogram Summary Continued ...**



**Overall Results for sample 3 : C48 soni**

Number of peaks found: 43      Corr. Area 1: 3,969.8  
 Noise: 0.5

**Peak table for sample 3 : C48 soni**

Peak	Size [bp]	Conc. [pg/μl]	Molarity [pmol/l]	Observations
1	35	125.00	5,411.3	Lower Marker
2	48	1,777.95	55,771.1	
3	58	352.15	9,167.1	
4	69	98.53	2,154.9	
5	82	137.60	2,538.4	
6	121	488.54	6,128.9	
7	139	182.15	1,983.3	
8	160	218.43	2,064.7	
9	178	226.76	1,930.3	
10	185	148.91	1,221.2	
11	192	116.30	917.5	
12	212	303.20	2,167.5	
13	229	253.25	1,677.3	
14	238	170.39	1,086.1	
15	253	139.90	838.0	
16	271	175.90	984.1	
17	283	228.94	1,223.8	
18	323	464.43	2,181.8	
19	345	376.91	1,656.4	
20	376	170.30	687.0	
21	385	208.48	819.9	
22	398	367.00	1,395.7	
23	435	359.91	1,254.9	
24	473	416.57	1,334.4	
25	509	176.19	524.4	
26	543	95.03	265.4	

Assay Class: High Sensitivity DNA Assay  
 Data Path: C:\...t\2100 bioanalyzer\2100 expert\data\PDFs\2012-02-13\_005.xad


Created: 2/13/2012 3:52:04 PM  
 Modified: 2/13/2012 4:33:21 PM

**Electropherogram Summary Continued ...**

**... Peak table for sample 3 : C48 soni**

Peak	Size [bp]	Conc. [pg/µl]	Molarity [pmol/l]	Observations
27	563	249.46	671.1	
28	599	229.58	581.1	
29	640	113.95	269.6	
30	674	102.27	229.8	
31	725	245.95	513.9	
32	858	58.54	103.3	
33	910	192.60	320.6	
34	1,247	42.08	51.2	
35	1,456	18.98	19.8	
36	1,644	44.34	40.9	
37	2,025	12.95	9.7	
38	2,758	15.63	8.6	
39	3,959	9.28	3.6	
40	5,388	7.70	2.2	
41	6,012	6.45	1.6	
42	7,072	6.59	1.4	
43	7,952	6.07	1.2	
44	10,098	30.28	4.5	
45	10,380	75.00	10.9	Upper Marker

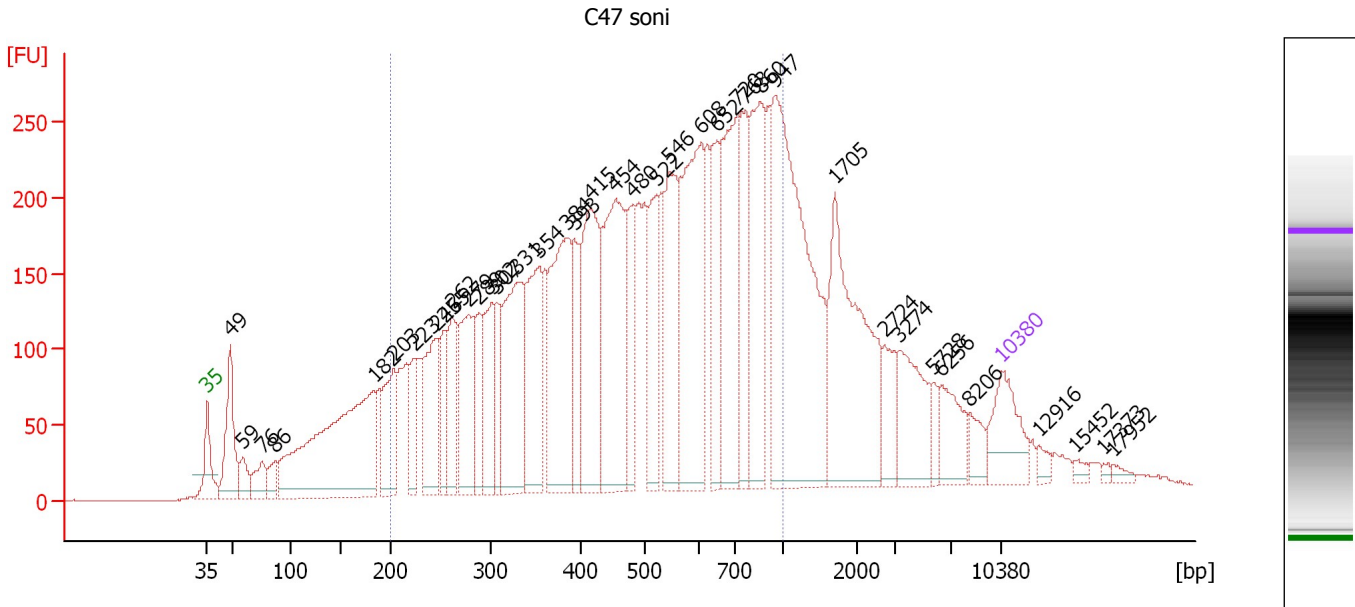
**Region table for sample 3 : C48 soni**

From [bp]	Molarity [pmol/l]	Average Size [bp]	Conc. [pg/µl]	To [bp]	Corr. Area	% of Total	Size distribution in CV [%]	Color
200	25,630.1	449	6,125.46	1,000	3,969.8	64	40.0	

Assay Class: High Sensitivity DNA Assay  
 Data Path: C:\...t\2100 bioanalyzer\2100 expert\data\PDFs\2012-02-13\_005.xad

Created: 2/13/2012 3:52:04 PM  
 Modified: 2/13/2012 4:33:21 PM

**Electropherogram Summary Continued ...**



**Overall Results for sample 4 : C47 soni**

Number of peaks found: 39                      Corr. Area 1: 7,523.6  
 Noise: 0.5

**Peak table for sample 4 : C47 soni**


Peak	Size [bp]	Conc. [pg/μl]	Molarity [pmol/l]	Observations
1	35	125.00	5,411.3	Lower Marker
2	49	157.09	4,887.9	
3	59	40.92	1,049.3	
4	76	52.07	1,045.0	
5	86	35.20	620.2	
6	182	531.63	4,419.2	
7	203	136.40	1,019.8	
8	223	69.92	474.6	
9	246	165.25	1,018.0	
10	255	72.13	429.2	
11	262	109.77	635.6	
12	279	169.89	922.7	
13	289	73.36	384.3	
14	302	129.67	649.6	
15	307	74.44	367.2	
16	331	254.52	1,166.4	
17	354	195.21	836.6	
18	384	279.50	1,102.6	
19	393	92.76	357.7	
20	415	253.50	926.1	
21	454	313.06	1,044.2	
22	480	103.85	327.9	
23	522	120.40	349.6	
24	546	176.49	489.7	
25	608	319.60	795.9	
26	652	121.35	282.0	

Assay Class: High Sensitivity DNA Assay  
 Data Path: C:\...t\2100 bioanalyzer\2100 expert\data\PDFs\2012-02-13\_005.xad


Created: 2/13/2012 3:52:04 PM  
 Modified: 2/13/2012 4:33:21 PM

**Electropherogram Summary Continued ...**

**... Peak table for sample 4 : C47 soni**

Peak	Size [bp]	Conc. [pg/µl]	Molarity [pmol/l]	Observations
27	720	243.73	513.0	
28	763	127.16	252.4	
29	860	209.61	369.1	
30	947	514.77	823.2	
31	1,705	279.12	248.1	
32	2,724	50.96	28.3	
33	3,274	100.86	46.7	
34	5,728	17.07	4.5	
35	6,256	59.64	14.4	
36	8,206	26.24	4.8	
37	 10,380	75.00	10.9	Upper Marker
38	12,916	0.00	0.0	
39	15,452	0.00	0.0	
40	17,373	0.00	0.0	
41	17,952	0.00	0.0	

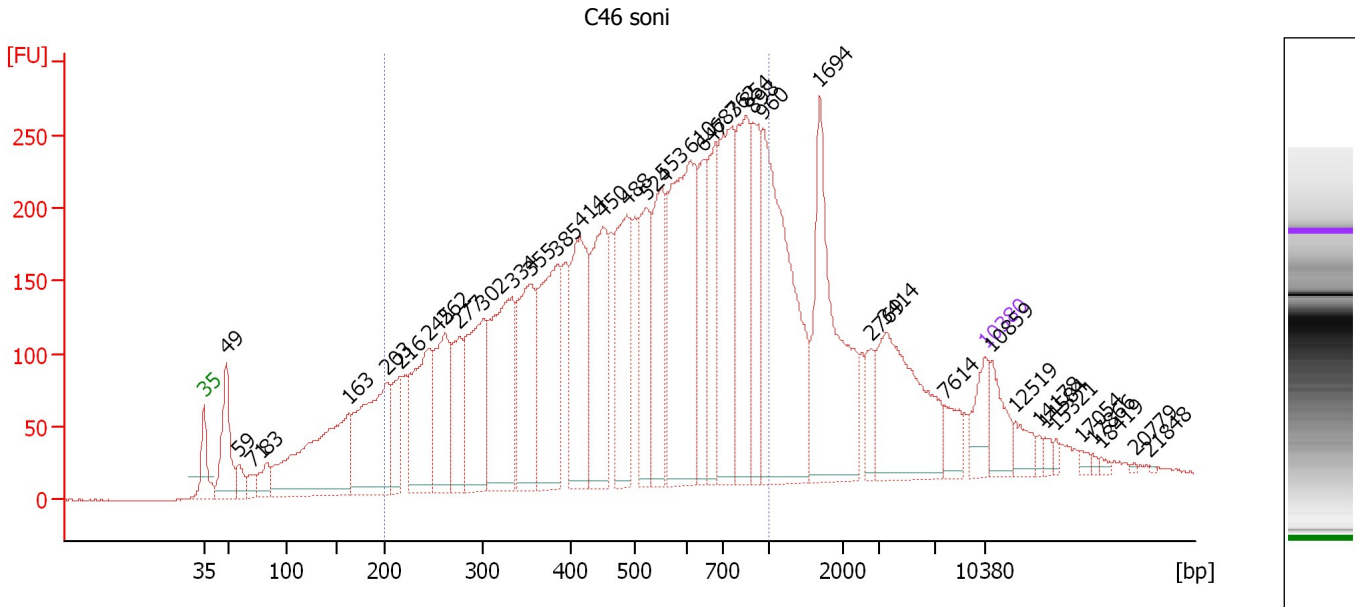
**Region table for sample 4 : C47 soni**

From [bp]	Molarity [pmol/l]	Average Size [bp]	Conc. [pg/µl]	To [bp]	Corr. Area	% of Total	Size distribution in CV [%]	Color
200	16,895.9	515	4,517.31	1,000	7,523.6	70	39.5	

Assay Class: High Sensitivity DNA Assay  
 Data Path: C:\...t\2100 bioanalyzer\2100 expert\data\PDFs\2012-02-13\_005.xad

Created: 2/13/2012 3:52:04 PM  
 Modified: 2/13/2012 4:33:21 PM

**Electropherogram Summary Continued ...**



**Overall Results for sample 5 : C46 soni**

Number of peaks found: 40      Corr. Area 1: 7,051.6  
 Noise: 0.7

**Peak table for sample 5 : C46 soni**


Peak	Size [bp]	Conc. [pg/μl]	Molarity [pmol/l]	Observations
1	35	125.00	5,411.3	Lower Marker
2	49	242.91	7,570.8	
3	59	59.05	1,512.3	
4	71	35.52	755.4	
5	83	71.96	1,308.9	
6	163	609.35	5,668.4	
7	203	463.10	3,461.1	
8	216	145.54	1,021.2	
9	245	374.29	2,313.4	
10	262	292.02	1,687.3	
11	277	193.35	1,059.4	
12	302	374.34	1,877.9	
13	334	464.41	2,108.5	
14	355	336.85	1,436.7	
15	385	403.07	1,585.8	
16	414	373.19	1,364.7	
17	450	359.07	1,210.2	
18	488	338.28	1,050.0	
19	524	254.01	735.1	
20	553	266.15	728.6	
21	610	595.41	1,478.6	
22	647	182.52	427.3	
23	683	222.10	493.0	
24	762	371.45	738.5	
25	854	318.36	564.8	
26	898	212.42	358.3	

Assay Class: High Sensitivity DNA Assay  
 Data Path: C:\...t\2100 bioanalyzer\2100 expert\data\PDFs\2012-02-13\_005.xad


Created: 2/13/2012 3:52:04 PM  
 Modified: 2/13/2012 4:33:21 PM

### Electropherogram Summary Continued ...

#### ... Peak table for sample 5 : C46 soni

Peak	Size [bp]	Conc. [pg/μl]	Molarity [pmol/l]	Observations
27	960	636.09	1,004.4	
28	1,694	424.86	380.0	
29	2,769	55.99	30.6	
30	3,414	320.66	142.3	
31	7,614	54.08	10.8	
32	 10,380	75.00	10.9	Upper Marker
33	10,859	0.00	0.0	
34	12,519	0.00	0.0	
35	14,178	0.00	0.0	
36	14,584	0.00	0.0	
37	15,321	0.00	0.0	
38	17,054	0.00	0.0	
39	17,866	0.00	0.0	
40	18,419	0.00	0.0	
41	20,779	0.00	0.0	
42	21,848	0.00	0.0	

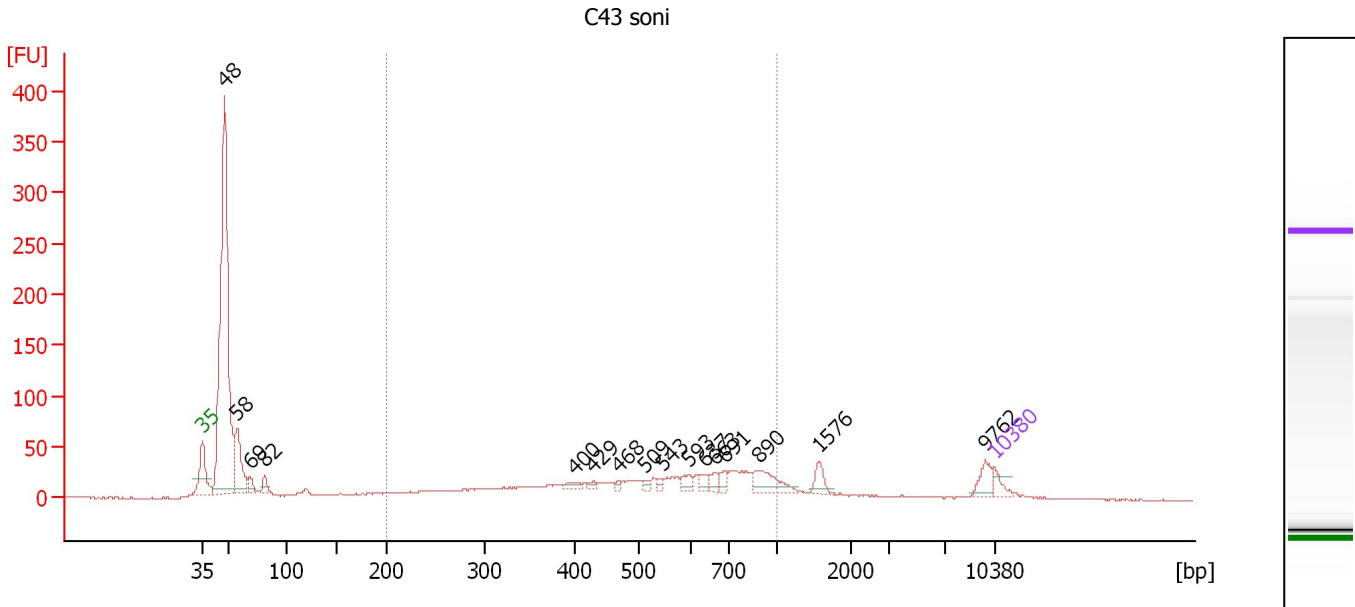
#### Region table for sample 5 : C46 soni

From [bp]	Molarity [pmol/l]	Average Size [bp]	Conc. [pg/μl]	To [bp]	Corr. Area	% of Total	Size distribution in CV [%]	Color
200	25,463.4	518	6,863.87	1,000	7,051.6	69	39.1	

Assay Class: High Sensitivity DNA Assay  
 Data Path: C:\...t\2100 bioanalyzer\2100 expert\data\PDFs\2012-02-13\_005.xad

Created: 2/13/2012 3:52:04 PM  
 Modified: 2/13/2012 4:33:21 PM

**Electropherogram Summary Continued ...**



**Overall Results for sample 6 : C43 soni**

Number of peaks found: 16      Corr. Area 1: 661.5  
 Noise: 0.5

**Peak table for sample 6 : C43 soni**

Peak	Size [bp]	Conc. [pg/μl]	Molarity [pmol/l]	Observations
1	35	125.00	5,411.3	Lower Marker
2	48	4,172.06	130,571.4	
3	58	586.57	15,258.1	
4	69	100.45	2,198.6	
5	82	96.10	1,775.0	
6	400	54.71	207.3	
7	429	35.42	125.2	
8	468	26.17	84.8	
9	509	30.97	92.2	
10	543	35.37	98.6	
11	593	69.79	178.3	
12	637	56.68	134.9	
13	663	63.46	145.0	
14	691	71.01	155.8	
15	890	224.51	382.3	
16	1,576	96.65	92.9	
17	9,762	109.07	16.9	
18	10,380	75.00	10.9	Upper Marker

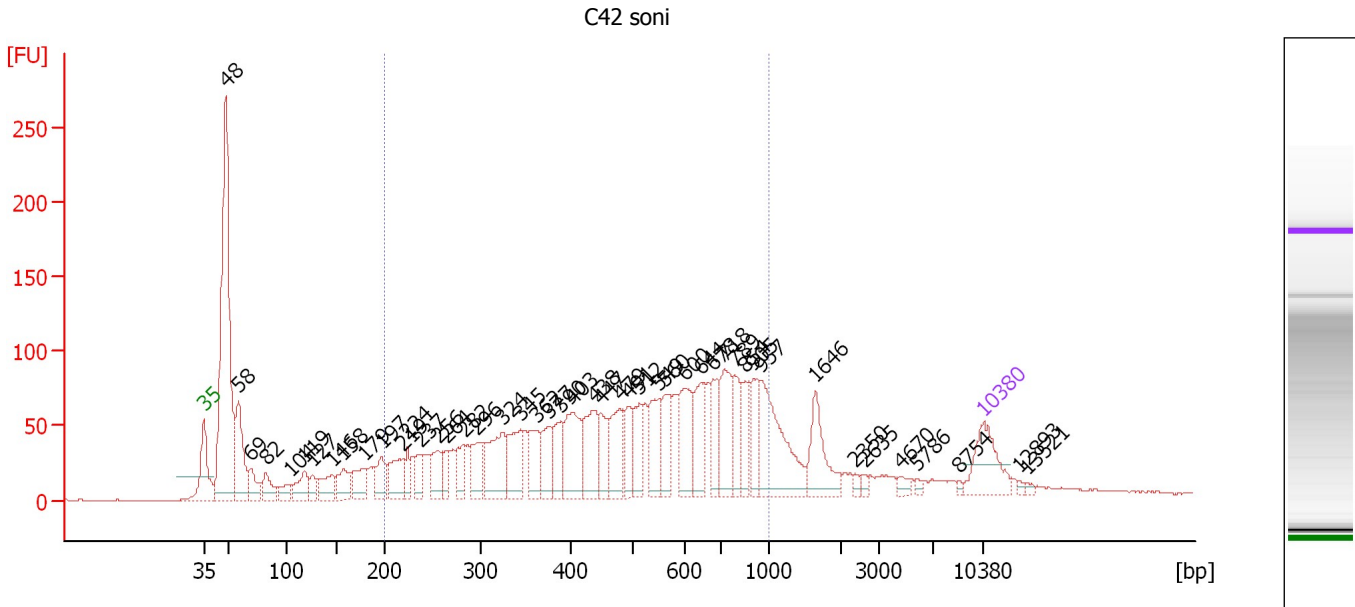
**Region table for sample 6 : C43 soni**

From [bp]	Molarity [pmol/l]	Average Size [bp]	Conc. [pg/μl]	To [bp]	Corr. Area	% of Total	Size distribution in CV [%]	Color
200	9,678.4	543	2,769.57	1,000	661.5	38	36.9	Blue

Assay Class: High Sensitivity DNA Assay  
 Data Path: C:\...t\2100 bioanalyzer\2100 expert\data\PDFs\2012-02-13\_005.xad

Created: 2/13/2012 3:52:04 PM  
 Modified: 2/13/2012 4:33:21 PM

**Electropherogram Summary Continued ...**



**Overall Results for sample 7 : C42 soni**

Number of peaks found: 47      Corr. Area 1: 2,303.3  
 Noise: 0.4

**Peak table for sample 7 : C42 soni**

Peak	Size [bp]	Conc. [pg/μl]	Molarity [pmol/l]	Observations
1	35	125.00	5,411.3	Lower Marker
2	48	754.78	23,668.7	
3	58	169.97	4,418.0	
4	69	57.17	1,247.2	
5	82	49.60	911.0	
6	104	34.55	501.0	
7	119	58.38	743.5	
8	127	30.28	361.3	
9	146	59.80	619.2	
10	158	64.27	617.4	
11	179	64.32	544.3	
12	197	61.72	474.5	
13	219	76.58	529.5	
14	224	37.61	254.9	
15	237	47.58	304.5	
16	256	65.11	386.0	
17	264	36.76	211.1	
18	282	50.02	268.7	
19	296	76.11	389.0	
20	324	129.11	604.4	
21	345	96.30	423.4	
22	362	66.57	278.6	
23	377	69.58	279.7	
24	390	69.09	268.7	
25	403	122.88	462.0	
26	438	105.38	364.3	



Assay Class: High Sensitivity DNA Assay  
 Data Path: C:\...t\2100 bioanalyzer\2100 expert\data\PDFs\2012-02-13\_005.xad


Created: 2/13/2012 3:52:04 PM  
 Modified: 2/13/2012 4:33:21 PM

**Electropherogram Summary Continued ...**

**... Peak table for sample 7 : C42 soni**

Peak	Size [bp]	Conc. [pg/μl]	Molarity [pmol/l]	Observations
27	447	64.74	219.2	
28	479	96.90	306.8	
29	491	57.64	177.8	
30	512	64.59	191.2	
31	549	86.33	238.2	
32	560	70.68	191.1	
33	600	103.06	260.4	
34	644	80.60	189.6	
35	678	68.93	154.0	
36	718	101.94	215.2	
37	789	66.48	127.6	
38	854	54.78	97.2	
39	905	64.58	108.1	
40	957	174.23	275.9	
41	1,646	84.49	77.8	
42	2,350	8.16	5.3	
43	2,635	6.37	3.7	
44	4,670	9.64	3.1	
45	5,786	5.07	1.3	
46	8,754	3.90	0.7	
47	10,380	75.00	10.9	Upper Marker
48	12,893	0.00	0.0	
49	13,521	0.00	0.0	

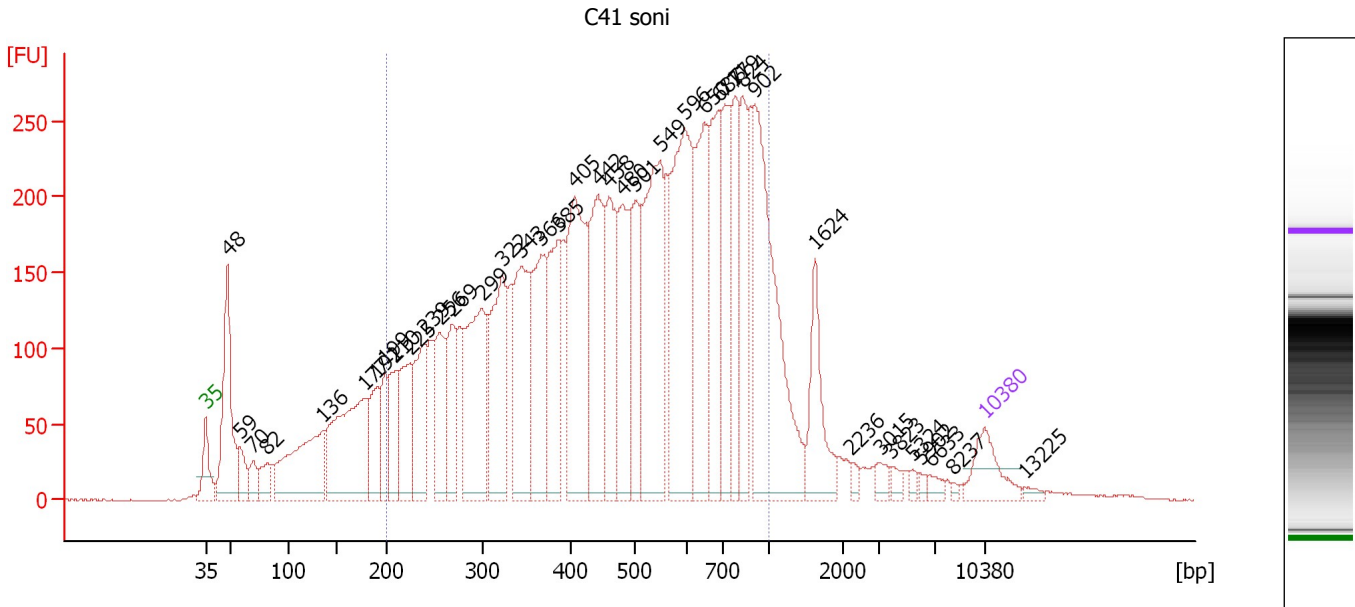
**Region table for sample 7 : C42 soni**

From [bp]	Molarity [pmol/l]	Average Size [bp]	Conc. [pg/μl]	To [bp]	Corr. Area	% of Total	Size distribution in CV [%]	Color
200	8,835.2	518	2,384.59	1,000	2,303.3	63	38.9	

Assay Class: High Sensitivity DNA Assay  
 Data Path: C:\...t\2100 bioanalyzer\2100 expert\data\PDFs\2012-02-13\_005.xad

Created: 2/13/2012 3:52:04 PM  
 Modified: 2/13/2012 4:33:21 PM

**Electropherogram Summary Continued ...**



**Overall Results for sample 8 : C41 soni**

Number of peaks found: 40                      Corr. Area 1: 7,683.3  
 Noise: 0.4

**Peak table for sample 8 : C41 soni**

Peak	Size [bp]	Conc. [pg/μl]	Molarity [pmol/l]	Observations
1	35	125.00	5,411.3	Lower Marker
2	48	410.01	12,857.2	
3	59	82.58	2,129.6	
4	70	60.19	1,304.2	
5	82	69.61	1,285.8	
6	136	406.11	4,538.2	
7	177	484.50	4,138.2	
8	191	159.35	1,263.7	
9	199	118.19	898.7	
10	210	153.30	1,107.5	
11	225	203.32	1,371.3	
12	239	232.70	1,475.2	
13	256	211.40	1,253.4	
14	269	176.96	997.5	
15	299	414.58	2,099.7	
16	322	342.86	1,611.1	
17	343	342.71	1,512.1	
18	366	318.37	1,317.4	
19	385	283.38	1,116.0	
20	405	464.32	1,738.7	
21	442	341.74	1,172.5	
22	458	260.22	860.1	
23	480	264.21	833.5	
24	501	230.54	697.9	
25	549	486.64	1,342.8	
26	596	509.27	1,295.6	

Assay Class: High Sensitivity DNA Assay  
 Data Path: C:\...t\2100 bioanalyzer\2100 expert\data\PDFs\2012-02-13\_005.xad


Created: 2/13/2012 3:52:04 PM  
 Modified: 2/13/2012 4:33:21 PM

### Electropherogram Summary Continued ...

#### ... Peak table for sample 8 : C41 soni

Peak	Size [bp]	Conc. [pg/μl]	Molarity [pmol/l]	Observations
27	650	340.65	794.1	
28	687	284.85	628.2	
29	711	227.55	484.9	
30	779	184.59	358.9	
31	824	190.96	351.3	
32	902	581.74	977.1	
33	1,624	151.28	141.2	
34	2,236	13.52	9.2	
35	3,015	21.77	10.9	
36	3,823	15.61	6.2	
37	5,324	10.76	3.1	
38	5,902	9.03	2.3	
39	6,633	16.14	3.7	
40	8,237	4.49	0.8	
41	10,380	75.00	10.9	Upper Marker
42	13,225	0.00	0.0	

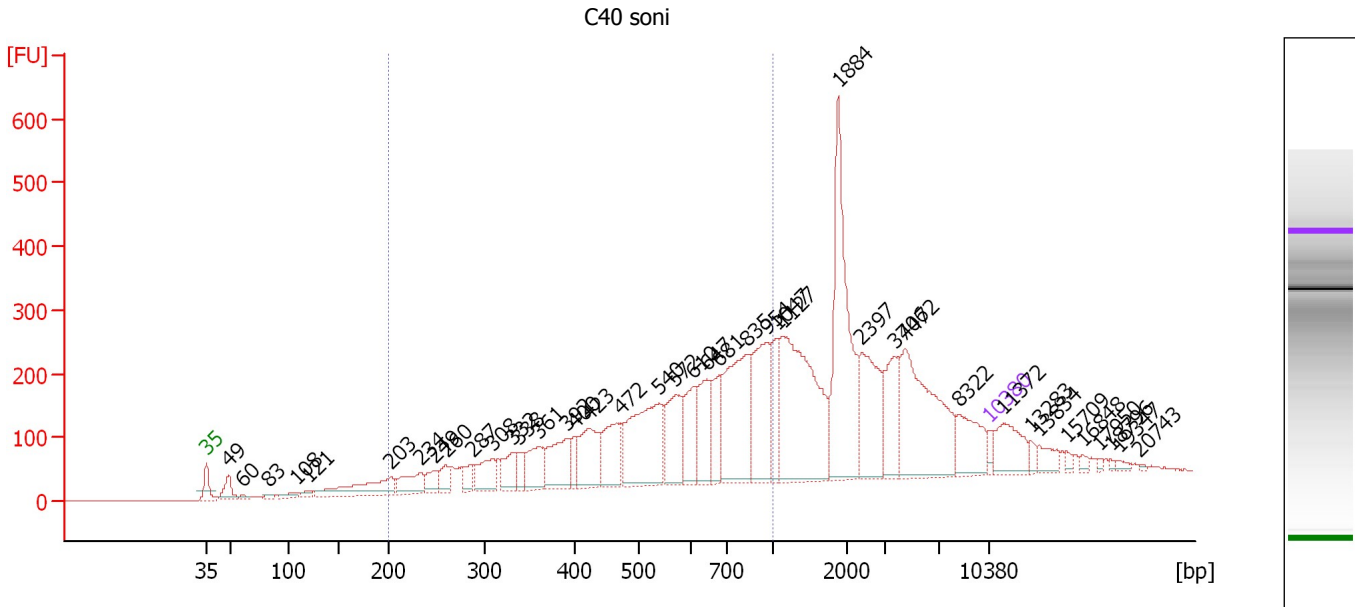
#### Region table for sample 8 : C41 soni

From [bp]	Molarity [pmol/l]	Average Size [bp]	Conc. [pg/μl]	To [bp]	Corr. Area	% of Total	Size distribution in CV [%]	Color
200	28,108.0	513	7,535.88	1,000	7,683.3	78	38.8	

Assay Class: High Sensitivity DNA Assay  
 Data Path: C:\...t\2100 bioanalyzer\2100 expert\data\PDFs\2012-02-13\_005.xad

Created: 2/13/2012 3:52:04 PM  
 Modified: 2/13/2012 4:33:21 PM

**Electropherogram Summary Continued ...**



**Overall Results for sample 9 : C40 soni**

Number of peaks found: 41                      Corr. Area 1: 3,972.3  
 Noise: 0.4

**Peak table for sample 9 : C40 soni**

Peak	Size [bp]	Conc. [pg/μl]	Molarity [pmol/l]	Observations
1	35	125.00	5,411.3	Lower Marker
2	49	271.13	8,458.4	
3	60	38.22	965.4	
4	83	46.76	857.1	
5	108	84.20	1,184.0	
6	121	76.42	960.6	
7	203	678.60	5,060.5	
8	234	380.13	2,462.2	
9	249	194.62	1,182.9	
10	260	198.96	1,158.2	
11	287	162.93	861.3	
12	308	397.40	1,954.2	
13	332	352.63	1,609.6	
14	338	151.39	678.8	
15	361	443.22	1,862.6	
16	392	593.54	2,297.0	
17	400	178.62	676.9	
18	423	668.72	2,394.2	
19	472	606.12	1,947.0	
20	540	1,344.28	3,770.6	
21	572	664.87	1,761.1	
22	610	530.48	1,317.7	
23	647	619.16	1,450.4	
24	681	391.39	871.2	
25	835	1,375.54	2,494.7	
26	954	916.93	1,456.0	

Assay Class: High Sensitivity DNA Assay  
 Data Path: C:\...t\2100 bioanalyzer\2100 expert\data\PDFs\2012-02-13\_005.xad


Created: 2/13/2012 3:52:04 PM  
 Modified: 2/13/2012 4:33:21 PM

**Electropherogram Summary Continued ...**

**... Peak table for sample 9 : C40 soni**

Peak	Size [bp]	Conc. [pg/μl]	Molarity [pmol/l]	Observations
27	1,047	412.44	596.7	
28	1,127	1,944.64	2,613.7	
29	1,884	1,702.46	1,369.5	
30	2,397	774.67	489.7	
31	3,706	508.86	208.0	
32	4,472	1,411.76	478.3	
33	8,322	436.35	79.4	
34	10,380	75.00	10.9	Upper Marker
35	11,372	0.00	0.0	
36	13,283	0.00	0.0	
37	13,834	0.00	0.0	
38	15,709	0.00	0.0	
39	16,848	0.00	0.0	
40	17,950	0.00	0.0	
41	18,796	0.00	0.0	
42	19,347	0.00	0.0	
43	20,743	0.00	0.0	

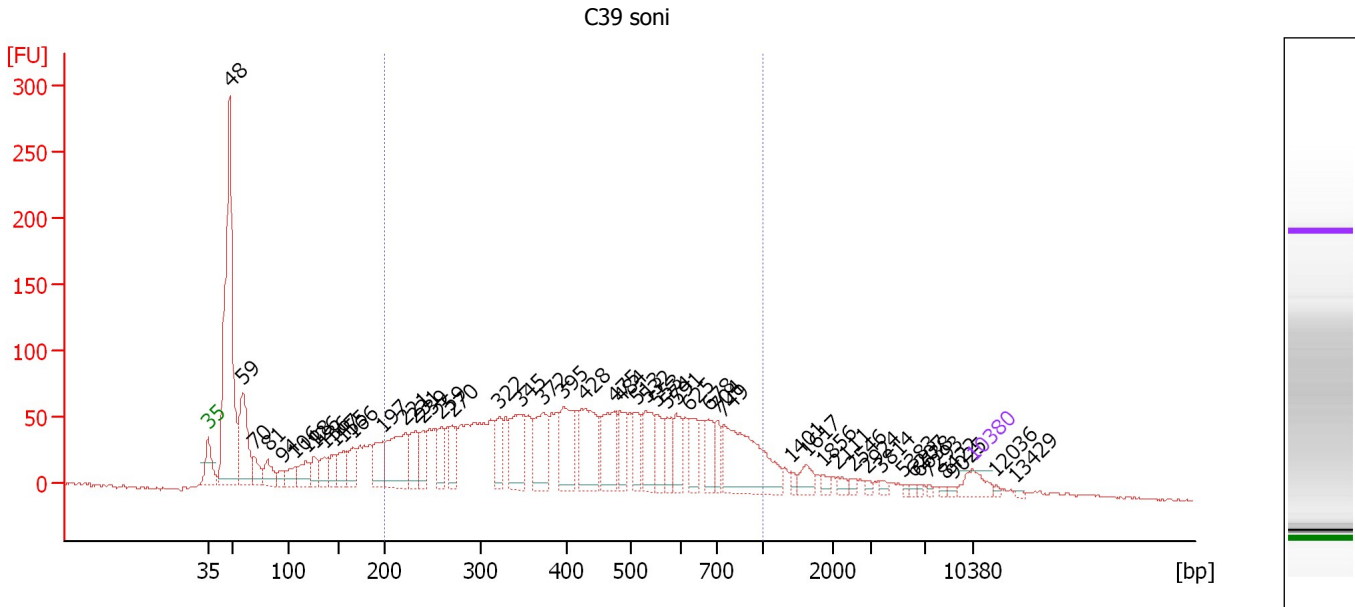
**Region table for sample 9 : C40 soni**

From [bp]	Molarity [pmol/l]	Average Size [bp]	Conc. [pg/μl]	To [bp]	Corr. Area	% of Total	Size distribution in CV [%]	Color
200	35,119.4	576	10,733.47	1,000	3,972.3	50	35.5	

Assay Class: High Sensitivity DNA Assay  
 Data Path: C:\...t\2100 bioanalyzer\2100 expert\data\PDFs\2012-02-13\_005.xad

Created: 2/13/2012 3:52:04 PM  
 Modified: 2/13/2012 4:33:21 PM

**Electropherogram Summary Continued ...**



**Overall Results for sample 10 : C39 soni**

Number of peaks found: 49      Corr. Area 1: 2,309.1  
 Noise: 0.9

**Peak table for sample 10 : C39 soni**

Peak	Size [bp]	Conc. [pg/μl]	Molarity [pmol/l]	Observations
1	35	125.00	5,411.3	Lower Marker
2	48	1,802.28	56,610.0	
3	59	481.49	12,296.7	
4	70	118.39	2,571.4	
5	81	131.38	2,453.5	
6	94	54.17	873.8	
7	106	97.44	1,391.2	
8	118	138.33	1,782.3	
9	126	110.63	1,332.5	
10	136	105.17	1,170.2	
11	147	97.48	1,004.1	
12	155	143.72	1,401.4	
13	166	144.97	1,323.4	
14	197	198.51	1,529.9	
15	221	400.68	2,750.1	
16	231	175.57	1,152.2	
17	239	137.55	870.9	
18	259	138.27	808.9	
19	270	149.11	836.0	
20	322	171.09	805.0	
21	345	297.41	1,305.4	
22	372	272.90	1,111.4	
23	395	292.37	1,122.5	
24	428	368.05	1,301.6	
25	475	270.82	864.5	
26	484	158.12	494.9	

Assay Class: High Sensitivity DNA Assay  
 Data Path: C:\...t\2100 bioanalyzer\2100 expert\data\PDFs\2012-02-13\_005.xad


Created: 2/13/2012 3:52:04 PM  
 Modified: 2/13/2012 4:33:21 PM

**Electropherogram Summary Continued ...**

**... Peak table for sample 10 : C39 soni**

Peak	Size [bp]	Conc. [pg/µl]	Molarity [pmol/l]	Observations
27	513	127.76	377.3	
28	532	206.94	589.4	
29	553	122.83	336.5	
30	574	109.77	289.7	
31	591	131.32	336.7	
32	625	133.40	323.5	
33	678	131.30	293.6	
34	704	87.11	187.5	
35	749	519.07	1,049.7	
36	1,401	21.90	23.7	
37	1,617	60.06	56.3	
38	1,856	23.05	18.8	
39	2,111	25.46	18.3	
40	2,546	15.95	9.5	
41	2,924	14.70	7.6	
42	3,814	16.99	6.7	
43	5,383	9.47	2.7	
44	6,207	10.10	2.5	
45	6,638	9.27	2.1	
46	7,293	8.88	1.8	
47	8,422	7.79	1.4	
48	9,025	10.28	1.7	
49	10,380	75.00	10.9	Upper Marker
50	12,036	0.00	0.0	
51	13,429	0.00	0.0	

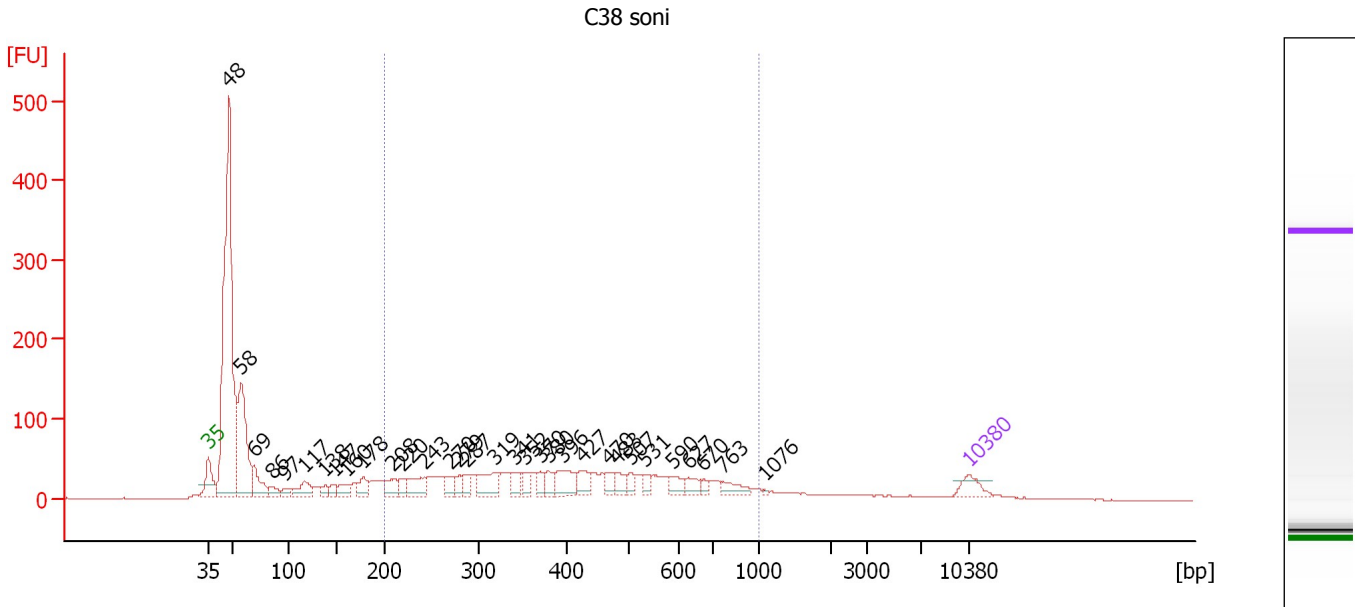
**Region table for sample 10 : C39 soni**

From [bp]	Molarity [pmol/l]	Average Size [bp]	Conc. [pg/µl]	To [bp]	Corr. Area	% of Total	Size distribution in CV [%]	Color
200	24,731.6	459	6,024.59	1,000	2,309.1	63	39.8	

Assay Class: High Sensitivity DNA Assay  
 Data Path: C:\...t\2100 bioanalyzer\2100 expert\data\PDFs\2012-02-13\_005.xad

Created: 2/13/2012 3:52:04 PM  
 Modified: 2/13/2012 4:33:21 PM

**Electropherogram Summary Continued ...**



**Overall Results for sample 11 : C38 soni**

Number of peaks found: 32                      Corr. Area 1: 1,308.0  
 Noise: 0.5

**Peak table for sample 11 : C38 soni**

Peak	Size [bp]	Conc. [pg/μl]	Molarity [pmol/l]	Observations
1	35	125.00	5,411.3	Lower Marker
2	48	2,997.84	94,706.3	
3	58	886.84	23,156.0	
4	69	234.68	5,119.5	
5	86	81.50	1,441.9	
6	97	51.52	804.2	
7	117	150.20	1,946.5	
8	138	56.27	618.9	
9	147	60.11	619.2	
10	160	87.64	827.6	
11	178	111.33	948.7	
12	208	112.41	820.8	
13	220	64.04	441.2	
14	243	170.34	1,061.7	
15	270	89.05	499.4	
16	279	65.95	358.6	
17	287	65.63	346.3	
18	319	189.38	900.8	
19	341	84.25	374.1	
20	352	81.78	351.8	
21	370	56.95	233.2	
22	380	78.33	312.5	
23	396	172.92	661.1	
24	427	106.75	379.1	
25	470	67.15	216.6	
26	483	71.42	224.2	



Assay Class: High Sensitivity DNA Assay  
 Data Path: C:\...t\2100 bioanalyzer\2100 expert\data\PDFs\2012-02-13\_005.xad


Created: 2/13/2012 3:52:04 PM  
 Modified: 2/13/2012 4:33:21 PM

### Electropherogram Summary Continued ...

#### ... Peak table for sample 11 : C38 soni

Peak	Size [bp]	Conc. [pg/μl]	Molarity [pmol/l]	Observations
27	507	58.46	174.7	
28	531	56.49	161.1	
29	590	77.82	200.0	
30	627	62.09	149.9	
31	670	29.86	67.5	
32	763	78.20	155.2	
33	1,076	6.98	9.8	
34	▶ 10,380	75.00	10.9	Upper Marker

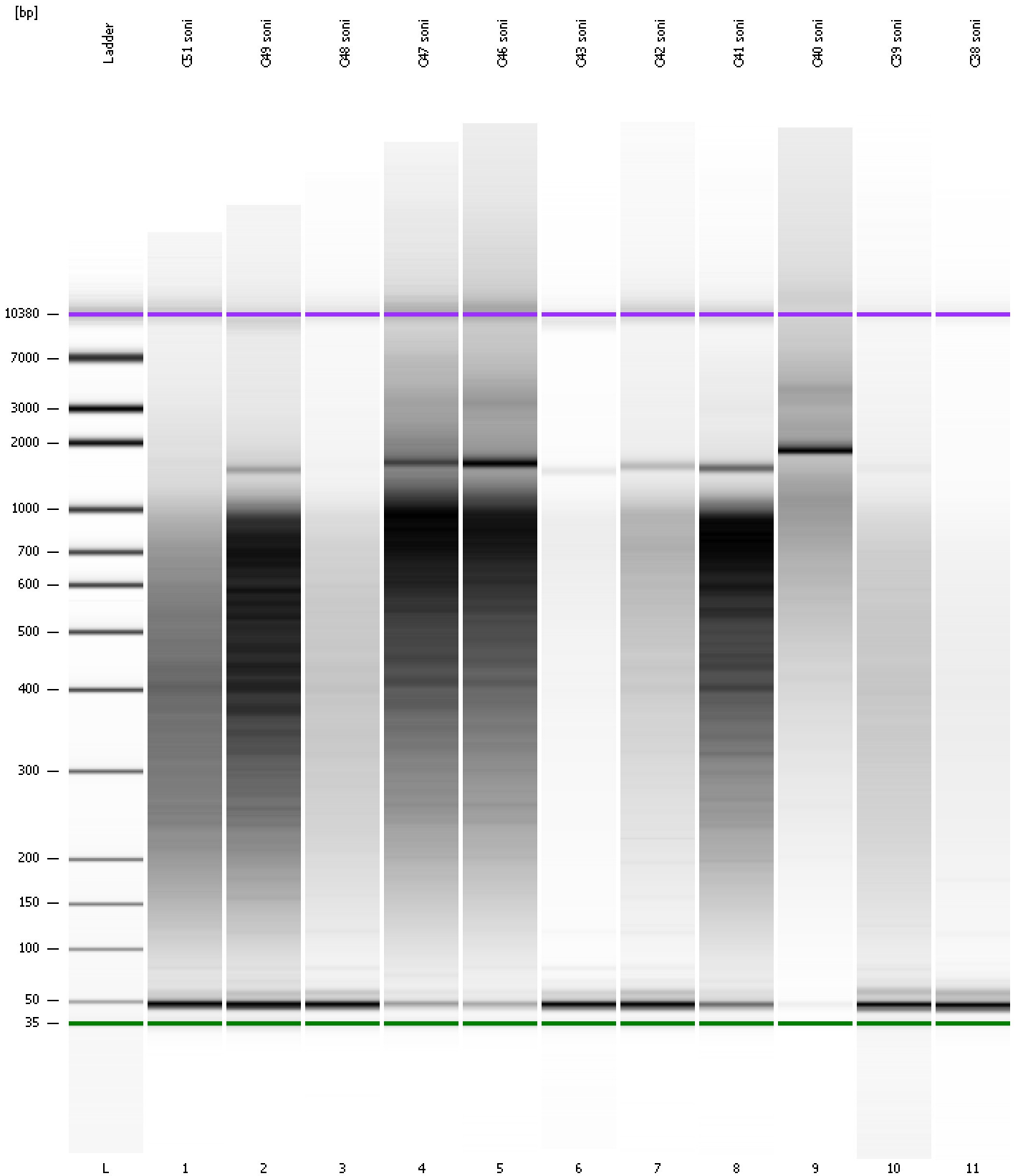
#### Region table for sample 11 : C38 soni

From [bp]	Molarity [pmol/l]	Average Size [bp]	Conc. [pg/μl]	To [bp]	Corr. Area	% of Total	Size distribution in CV [%]	Color
200	12,729.1	437	2,999.88	1,000	1,308.0	42	39.2	

Assay Class: High Sensitivity DNA Assay  
Data Path: C:\...t\2100 bioanalyzer\2100 expert\data\PDFs\2012-02-13\_005.xad

Created: 2/13/2012 3:52:04 PM  
Modified: 2/13/2012 4:33:21 PM

**Gel Image**



Assay Class: High Sensitivity DNA Assay  
 Data Path: C:\...t\2100 bioanalyzer\2100 expert\data\PDFs\2012-02-13\_005.xad

Created: 2/13/2012 3:52:04 PM  
 Modified: 2/13/2012 4:33:21 PM

**Run Logbook**

Description	Number	Source	Category	Sub Category	Time	Time Zone	User	Host
Run ended on port 1 (Number of wells acquired: 12)		Instrument	Run		2/13/2012 4:33:17 PM	(GMT --08:00) Pacific Standard Time	UC Davis	D8XSMGH1
Run started on port 1 (File: C:\Program Files\Agilent\2100 bioanalyzer\2100 expert\data\PDFs\2012-02-13_005.xad)		Instrument	Run		2/13/2012 3:52:04 PM	(GMT --08:00) Pacific Standard Time	UC Davis	D8XSMGH1
Product Number : G2938B		Instrument	Run		2/13/2012 3:52:04 PM	(GMT --08:00) Pacific Standard Time	UC Davis	D8XSMGH1
Name :		Instrument	Run		2/13/2012 3:52:04 PM	(GMT --08:00) Pacific Standard Time	UC Davis	D8XSMGH1
Vendor : Agilent Technologies		Instrument	Run		2/13/2012 3:52:04 PM	(GMT --08:00) Pacific Standard Time	UC Davis	D8XSMGH1
Serial# : DE13701086		Instrument	Run		2/13/2012 3:52:04 PM	(GMT --08:00) Pacific Standard Time	UC Davis	D8XSMGH1
Firmware : C.01.069		Instrument	Run		2/13/2012 3:52:04 PM	(GMT --08:00) Pacific Standard Time	UC Davis	D8XSMGH1
Cartridge : Electrode		Instrument	Run		2/13/2012 3:52:04 PM	(GMT --08:00) Pacific Standard Time	UC Davis	D8XSMGH1