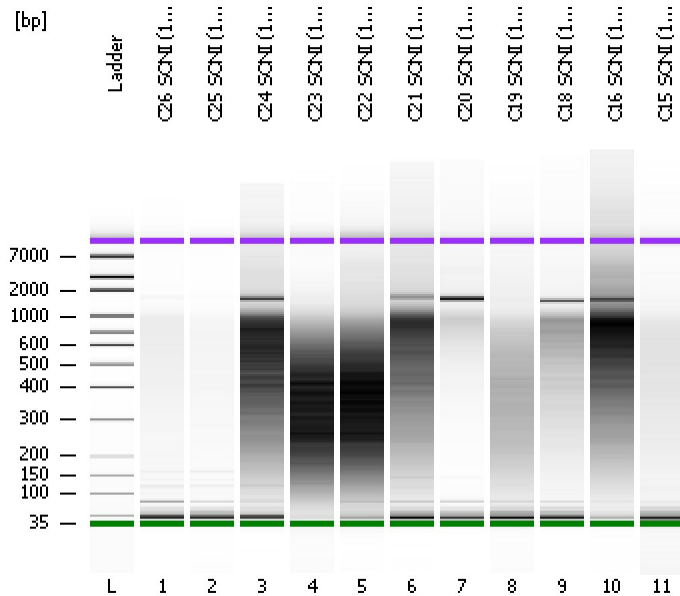


Assay Class: High Sensitivity DNA Assay  
Data Path: C:\...ents and Settings\Bioanalyzer\2012-02-14\2012-02-14\_001.xad

Created: 2/14/2012 12:09:17 PM  
Modified: 2/14/2012 12:50:41 PM

**Electrophoresis File Run Summary**



Instrument Information:

Instrument Name: DE13701086      Firmware: C.01.069  
Serial#: DE13701086      Type: G2938B

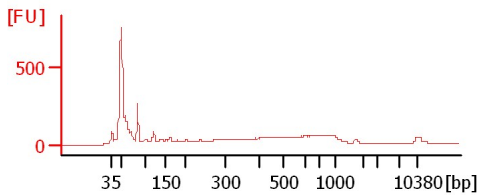
Assay Information:

Assay Origin Path: C:\Program Files\Agilent\2100 bioanalyzer\2100 expert\assays\dsDNA\High Sensitivity DNA.xsy  
Assay Class: High Sensitivity DNA Assay  
Version: 1.03  
Assay Comments: Copyright © 2003-2010 Agilent Technologies

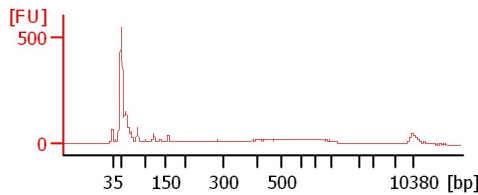
Chip Information:

Chip Lot #:  
Reagent Kit Lot #:  
Chip Comments:

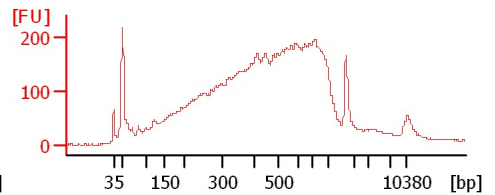
**C26 SONI (15/90, 9CYCLES)**



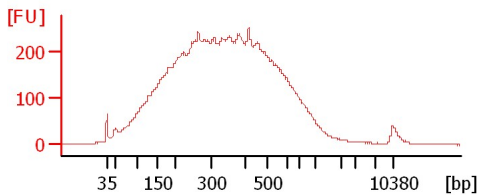
**C25 SONI (15/90, 9CYCLES)**



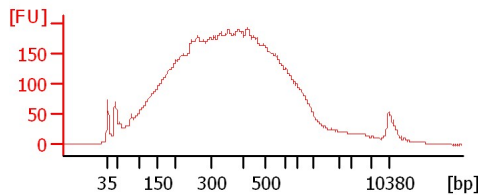
**C24 SONI (15/90, 9CYCLES)**



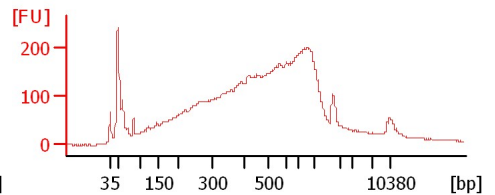
**C23 SONI (15/90, 9CYCLES)**



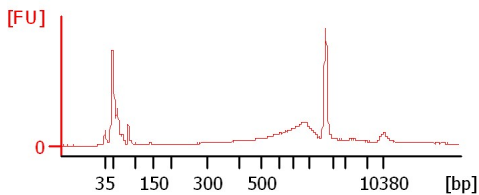
**C22 SONI (15/90, 9CYCLES)**



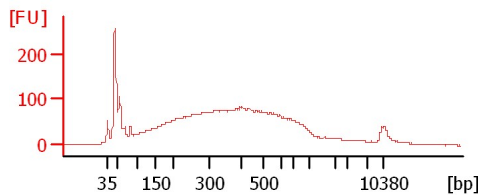
**C21 SONI (15/90, 9CYCLES)**



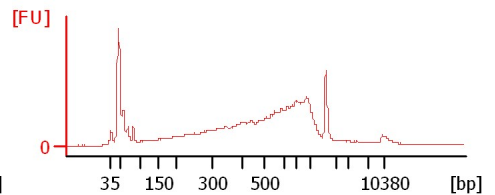
**C20 SONI (15/90, 9CYCLES)**



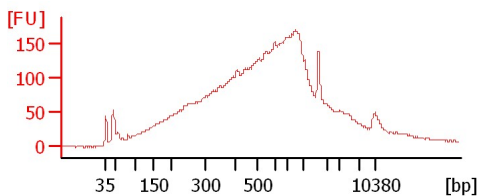
**C19 SONI (15/90, 9CYCLES)**



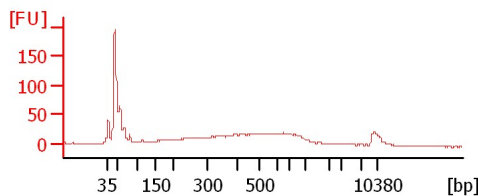
**C18 SONI (15/90, 9CYCLES)**



**C16 SONI (15/90, 9CYCLES)**



**C15 SONI (15/90, 9CYCLES)**



Assay Class: High Sensitivity DNA Assay  
Data Path: C:\...ents and Settings\Bioanalyzer\2012-02-14\2012-02-14\_001.xad

Created: 2/14/2012 12:09:17 PM  
Modified: 2/14/2012 12:50:41 PM

**Electrophoresis File Run Summary (Chip Summary)**

Sample Name	Sample Comment	Rest. Digest	Status	Observation	Result Label	Result Color
C26 SONI (15/90, 9CYCLES)		<input type="checkbox"/>	✓			
C25 SONI (15/90, 9CYCLES)		<input type="checkbox"/>	✓			
C24 SONI (15/90, 9CYCLES)		<input type="checkbox"/>	✓			
C23 SONI (15/90, 9CYCLES)		<input type="checkbox"/>	✓			
C22 SONI (15/90, 9CYCLES)		<input type="checkbox"/>	✓			
C21 SONI (15/90, 9CYCLES)		<input type="checkbox"/>	✓			
C20 SONI (15/90, 9CYCLES)		<input type="checkbox"/>	✓			
C19 SONI (15/90, 9CYCLES)		<input type="checkbox"/>	✓			
C18 SONI (15/90, 9CYCLES)		<input type="checkbox"/>	✓			
C16 SONI (15/90, 9CYCLES)		<input type="checkbox"/>	✓			
C15 SONI (15/90, 9CYCLES)		<input type="checkbox"/>	✓			
Ladder		<input type="checkbox"/>	✓			

**Chip Lot #****Reagent Kit Lot #****Chip Comments :**

Assay Class: High Sensitivity DNA Assay  
Data Path: C:\...ents and Settings\Bioanalyzer\2012-02-14\2012-02-14\_001.xad

Created: 2/14/2012 12:09:17 PM  
Modified: 2/14/2012 12:50:41 PM

**Electrophoresis Assay Details**

**General Analysis Settings**

Number of Available Sample and Ladder Wells (Max.) : 12  
Minimum Visible Range [s] : 32  
Maximum Visible Range [s] : 138  
Start Analysis Time Range [s] : 33  
End Analysis Time Range [s] : 137.5  
Ladder Concentration [pg/μl] : 1950  
Uses Standard Area for Ladder Fragments  
Lower Marker Concentration [pg/μl] : 125  
Upper Marker Concentration [pg/μl] : 75  
Used Upper Marker for Quantitation  
Standard Curve Fit is Point to Point  
Show Data Aligned to Lower and Upper Marker

**Integrator Settings**

Integration Start Time [s] : 33.05  
Integration End Time [s] : 137  
Slope Threshold : 0.8  
Height Threshold [FU] : 5  
Area Threshold : 0.1  
Width Threshold [s] : 0.6  
Baseline Plateau [s] : 0.5

**Filter Settings**

Filter Width [s] : 0.5  
Polynomial Order : 4

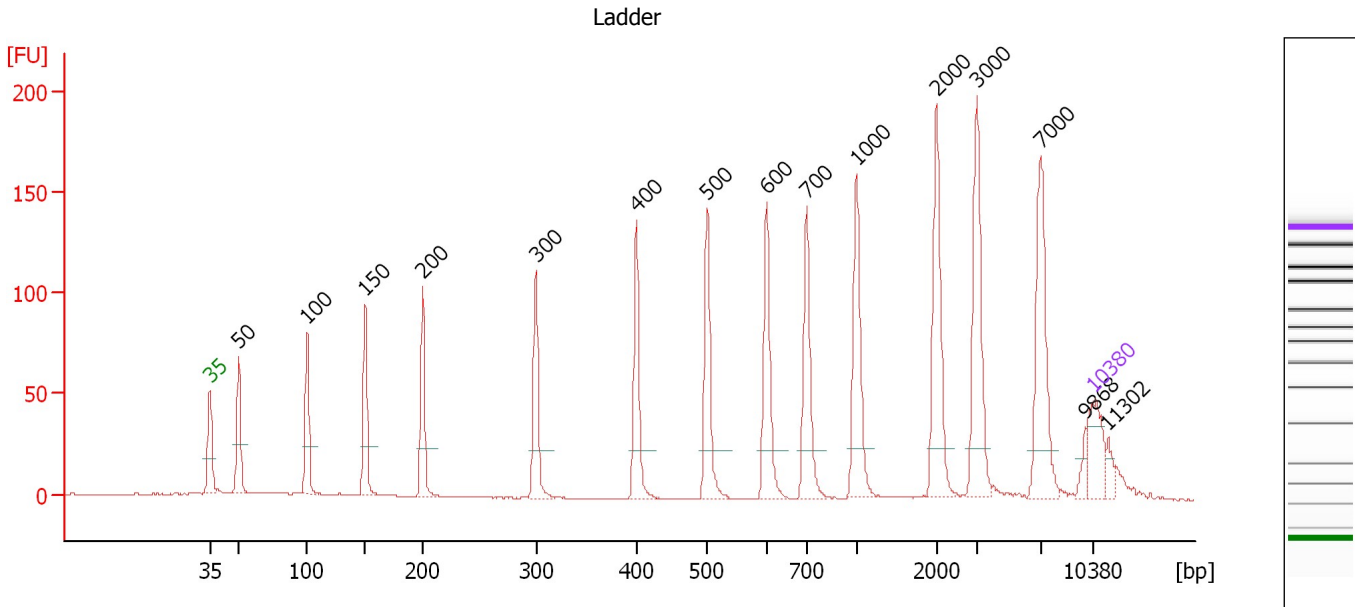
**Ladder**

Ladder Peak	Size	Area
1	35	160
2	50	210
3	100	208
4	150	221
5	200	242
6	300	270
7	400	305
8	500	306
9	600	336
10	700	321
11	1000	366
12	2000	413
13	3000	411
14	7000	400
15	10380	214

Assay Class: High Sensitivity DNA Assay  
 Data Path: C:\...ents and Settings\Bioanalyzer\2012-02-14\2012-02-14\_001.xad

Created: 2/14/2012 12:09:17 PM  
 Modified: 2/14/2012 12:50:41 PM

**Electropherogram Summary**



**Overall Results for Ladder**

Noise: 0.2

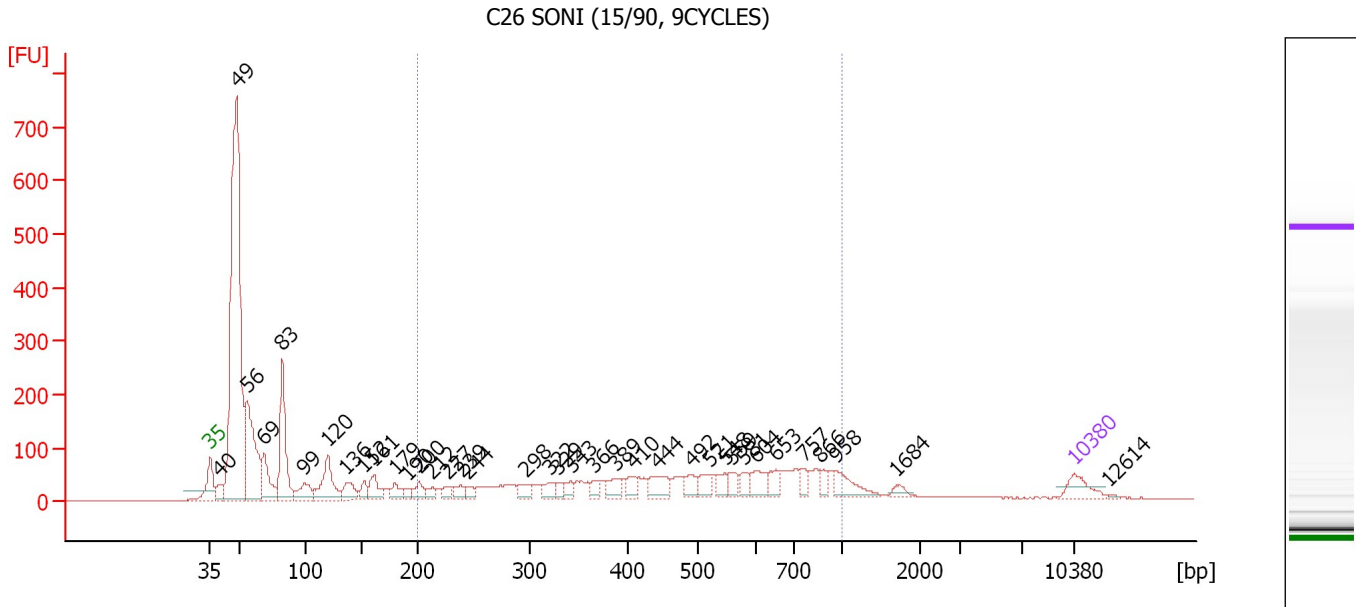
**Peak table for Ladder**

Peak	Size [bp]	Conc. [pg/μl]	Molarity [pmol/l]	Observations
1	35	125.00	5,411.3	Lower Marker
2	50	150.00	4,545.5	Ladder Peak
3	100	150.00	2,272.7	Ladder Peak
4	150	150.00	1,515.2	Ladder Peak
5	200	150.00	1,136.4	Ladder Peak
6	300	150.00	757.6	Ladder Peak
7	400	150.00	568.2	Ladder Peak
8	500	150.00	454.5	Ladder Peak
9	600	150.00	378.8	Ladder Peak
10	700	150.00	324.7	Ladder Peak
11	1,000	150.00	227.3	Ladder Peak
12	2,000	150.00	113.6	Ladder Peak
13	3,000	150.00	75.8	Ladder Peak
14	7,000	150.00	32.5	Ladder Peak
15	9,868	0.00	0.0	
16	10,380	75.00	10.9	Upper Marker
17	11,302	0.00	0.0	

Assay Class: High Sensitivity DNA Assay  
 Data Path: C:\...ents and Settings\Bioanalyzer\2012-02-14\2012-02-14\_001.xad

Created: 2/14/2012 12:09:17 PM  
 Modified: 2/14/2012 12:50:41 PM

**Electropherogram Summary Continued ...**



**Overall Results for sample 1 : C26 SONI (15/90, 9CYCLES)**

Number of peaks found: 37                      Corr. Area 1: 1,803.4  
 Noise: 0.4

**Peak table for sample 1 : C26 SONI (15/90, 9CYCLES)**

Peak	Size [bp]	Conc. [pg/μl]	Molarity [pmol/l]	Observations
1	35	125.00	5,411.3	Lower Marker
2	40	87.15	3,315.4	
3	49	2,990.81	92,643.9	
4	56	777.55	20,866.8	
5	69	271.44	5,940.2	
6	83	558.37	10,216.2	
7	99	147.03	2,246.0	
8	120	306.92	3,885.9	
9	136	123.98	1,380.4	
10	152	66.96	667.2	
11	161	128.87	1,216.1	
12	179	78.17	661.6	
13	190	36.37	289.4	
14	200	73.57	556.5	
15	212	48.12	343.3	
16	227	50.17	335.1	
17	239	54.95	348.5	
18	244	39.01	242.5	
19	298	68.59	349.1	
20	322	63.37	298.4	
21	329	35.70	164.3	
22	343	49.81	219.8	
23	366	47.12	195.0	
24	389	75.34	293.5	
25	410	63.52	235.0	
26	444	120.73	411.9	

Assay Class: High Sensitivity DNA Assay  
 Data Path: C:\...ents and Settings\Bioanalyzer\2012-02-14\2012-02-14\_001.xad


Created: 2/14/2012 12:09:17 PM  
 Modified: 2/14/2012 12:50:41 PM

**Electropherogram Summary Continued ...**

**... Peak table for sample 1 : C26 SONI (15/90, 9CYCLES)**

Peak	Size [bp]	Conc. [pg/µl]	Molarity [pmol/l]	Observations
27	492	77.85	239.9	
28	521	73.67	214.5	
29	548	62.02	171.4	
30	559	57.54	155.9	
31	581	50.83	132.5	
32	604	99.63	250.1	
33	653	64.16	148.9	
34	757	55.07	110.2	
35	866	38.48	67.3	
36	958	107.52	170.0	
37	1,684	25.03	22.5	
38	10,380	75.00	10.9	Upper Marker
39	12,614	0.00	0.0	

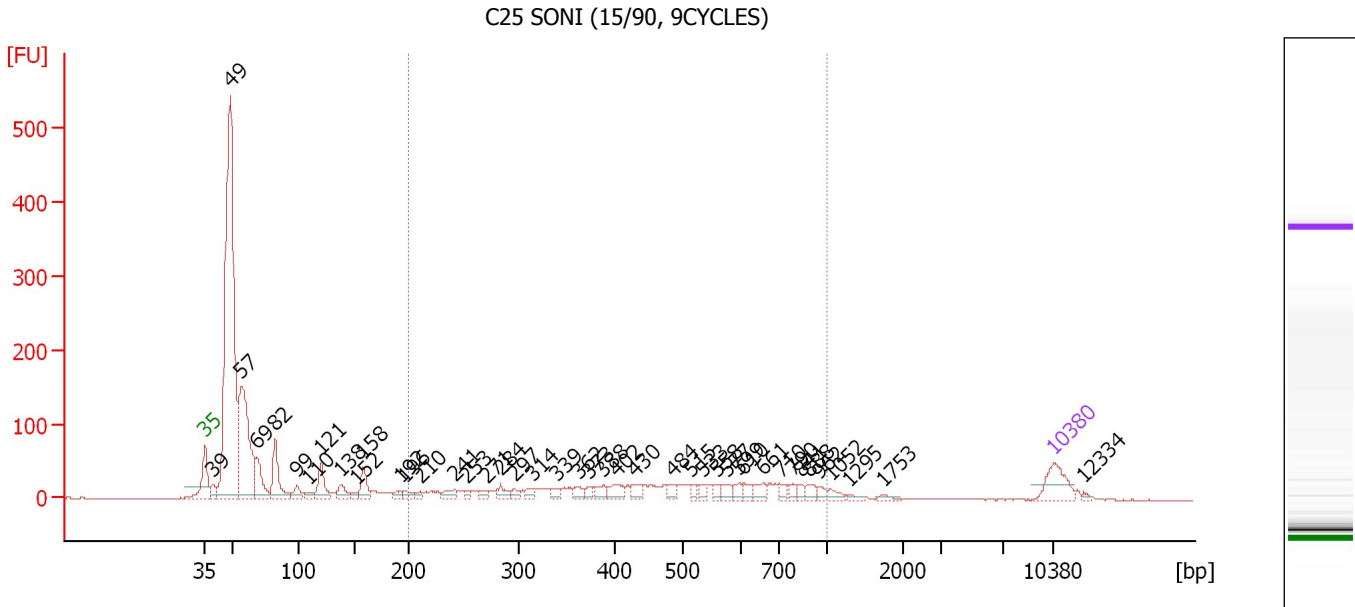
**Region table for sample 1 : C26 SONI (15/90, 9CYCLES)**

From [bp]	Molarity [pmol/l]	Average Size [bp]	Conc. [pg/µl]	To [bp]	Corr. Area	% of Total	Size distribution in CV [%]	Color
200	9,131.5	502	2,371.45	1,000	1,803.4	36	39.7	

Assay Class: High Sensitivity DNA Assay  
 Data Path: C:\...ents and Settings\Bioanalyzer\2012-02-14\2012-02-14\_001.xad

Created: 2/14/2012 12:09:17 PM  
 Modified: 2/14/2012 12:50:41 PM

**Electropherogram Summary Continued ...**



**Overall Results for sample 2 : C25 SONI (15/90, 9CYCLES)**

Number of peaks found: 43                      Corr. Area 1: 774.0  
 Noise: 0.5

**Peak table for sample 2 : C25 SONI (15/90, 9CYCLES)**

Peak	Size [bp]	Conc. [pg/μl]	Molarity [pmol/l]	Observations
1	35	125.00	5,411.3	Lower Marker
2	39	45.76	1,762.5	
3	49	1,817.66	56,680.4	
4	57	614.88	16,473.6	
5	69	136.69	3,012.4	
6	82	173.17	3,193.3	
7	99	45.57	698.6	
8	110	21.44	296.3	
9	121	104.81	1,316.8	
10	138	47.53	520.9	
11	152	16.57	165.5	
12	158	79.70	762.4	
13	192	21.36	168.9	
14	196	24.03	185.8	
15	210	16.29	117.8	
16	241	34.43	216.4	
17	253	17.14	102.5	
18	271	23.16	129.7	
19	284	32.91	175.7	
20	297	19.85	101.4	
21	314	22.99	110.8	
22	339	22.11	98.8	
23	362	26.27	110.0	
24	373	17.63	71.7	
25	388	27.47	107.4	
26	402	46.24	174.3	

Assay Class: High Sensitivity DNA Assay  
 Data Path: C:\...ents and Settings\Bioanalyzer\2012-02-14\2012-02-14\_001.xad


Created: 2/14/2012 12:09:17 PM  
 Modified: 2/14/2012 12:50:41 PM

**Electropherogram Summary Continued ...**

**... Peak table for sample 2 : C25 SONI (15/90, 9CYCLES)**

Peak	Size [bp]	Conc. [pg/µl]	Molarity [pmol/l]	Observations
27	430	30.10	106.0	
28	484	24.60	77.0	
29	515	18.10	53.3	
30	533	20.97	59.6	
31	558	16.94	46.0	
32	577	24.25	63.7	
33	599	20.47	51.8	
34	610	21.23	52.8	
35	661	31.67	72.6	
36	710	16.99	36.3	
37	790	18.08	34.7	
38	841	15.95	28.7	
39	888	22.31	38.1	
40	962	15.46	24.4	
41	1,052	17.59	25.3	
42	1,295	8.15	9.5	
43	1,753	9.42	8.1	
44	10,380	75.00	10.9	Upper Marker
45	12,334	0.00	0.0	

**Region table for sample 2 : C25 SONI (15/90, 9CYCLES)**

From [bp]	Molarity [pmol/l]	Average Size [bp]	Conc. [pg/µl]	To [bp]	Corr. Area	% of Total	Size distribution in CV [%]	Color
200	3,682.4	487	942.30	1,000	774.0	28	39.1	





Assay Class: High Sensitivity DNA Assay  
 Data Path: C:\...ents and Settings\Bioanalyzer\2012-02-14\2012-02-14\_001.xad


Created: 2/14/2012 12:09:17 PM  
 Modified: 2/14/2012 12:50:41 PM

**Electropherogram Summary Continued ...**

**... Peak table for sample 3 : C24 SONI (15/90, 9CYCLES)**

Peak	Size [bp]	Conc. [pg/µl]	Molarity [pmol/l]	Observations
27	481	267.33	842.7	
28	493	210.73	648.1	
29	517	191.92	562.3	
30	542	218.22	609.9	
31	560	181.41	490.6	
32	584	422.79	1,096.3	
33	651	214.75	500.1	
34	682	182.72	406.0	
35	756	367.10	736.0	
36	866	507.53	888.4	
37	1,666	176.78	160.7	
38	2,911	12.03	6.3	
39	3,343	10.07	4.6	
40	4,266	18.56	6.6	
41	6,289	8.06	1.9	
42	6,857	10.20	2.3	
43	7,580	5.54	1.1	
44	10,380	75.00	10.9	Upper Marker
45	12,525	0.00	0.0	
46	14,888	0.00	0.0	

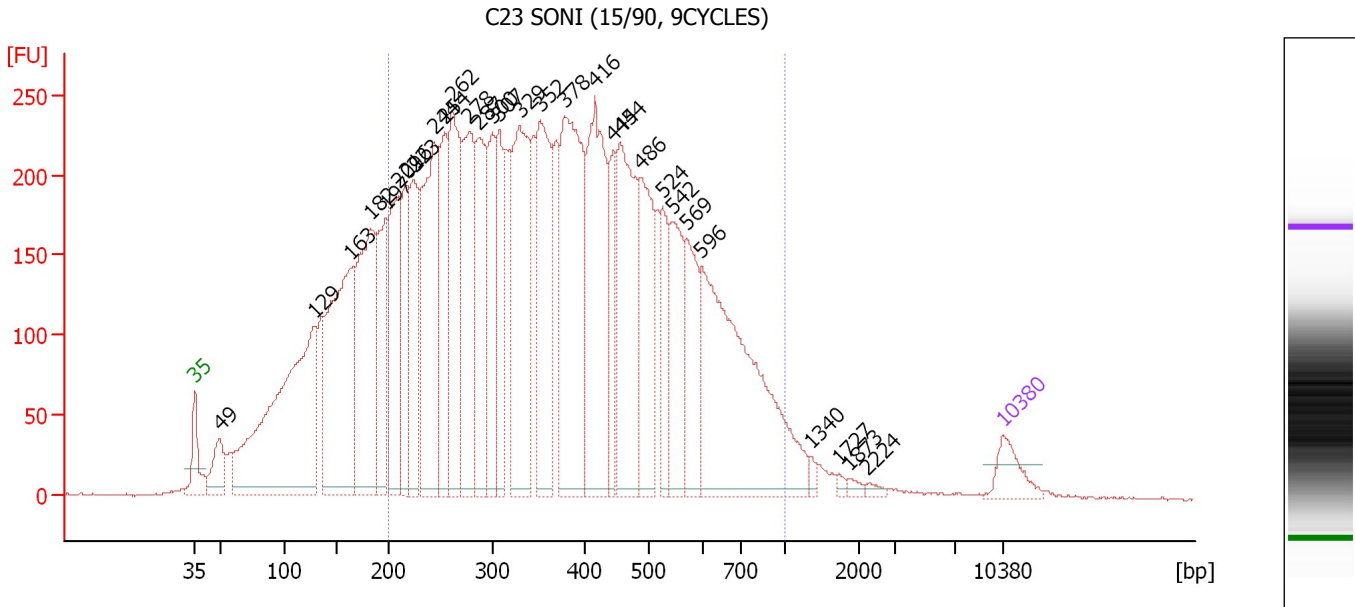
**Region table for sample 3 : C24 SONI (15/90, 9CYCLES)**

From [bp]	Molarity [pmol/l]	Average Size [bp]	Conc. [pg/µl]	To [bp]	Corr. Area	% of Total	Size distribution in CV [%]	Color
200	24,771.1	491	6,412.01	1,000	6,316.4	74	38.8	

Assay Class: High Sensitivity DNA Assay  
 Data Path: C:\...ents and Settings\Bioanalyzer\2012-02-14\2012-02-14\_001.xad

Created: 2/14/2012 12:09:17 PM  
 Modified: 2/14/2012 12:50:41 PM

**Electropherogram Summary Continued ...**



**Overall Results for sample 4 : C23 SONI (15/90, 9CYCLES)**

Number of peaks found: 30                      Corr. Area 1: 8,844.9  
 Noise: 0.7

**Peak table for sample 4 : C23 SONI (15/90, 9CYCLES)**

Peak	Size [bp]	Conc. [pg/μl]	Molarity [pmol/l]	Observations
1	35	125.00	5,411.3	Lower Marker
2	49	173.26	5,359.2	
3	129	1,575.46	18,508.5	
4	163	1,059.66	9,836.0	
5	182	892.26	7,428.9	
6	197	457.01	3,511.7	
7	209	570.83	4,138.3	
8	216	306.10	2,150.0	
9	223	445.36	3,019.8	
10	244	796.78	4,956.0	
11	254	471.42	2,813.1	
12	262	629.35	3,644.3	
13	278	589.04	3,214.3	
14	287	478.45	2,526.3	
15	300	399.24	2,017.3	
16	307	328.26	1,621.1	
17	329	769.29	3,538.8	
18	352	618.61	2,663.1	
19	378	924.30	3,704.7	
20	416	752.08	2,741.4	
21	444	226.60	772.4	
22	454	646.47	2,155.9	
23	486	436.53	1,359.7	
24	524	222.38	642.8	
25	542	320.87	897.1	
26	569	280.92	748.6	

Assay Class: High Sensitivity DNA Assay  
 Data Path: C:\...ents and Settings\Bioanalyzer\2012-02-14\2012-02-14\_001.xad


Created: 2/14/2012 12:09:17 PM  
 Modified: 2/14/2012 12:50:41 PM

**Electropherogram Summary Continued ...**

**... Peak table for sample 4 : C23 SONI (15/90, 9CYCLES)**

Peak	Size [bp]	Conc. [pg/μl]	Molarity [pmol/l]	Observations
27	596	1,068.58	2,715.8	
28	1,340	18.70	21.1	
29	1,727	12.23	10.7	
30	1,873	14.09	11.4	
31	2,224	13.89	9.5	
32	10,380	75.00	10.9	Upper Marker

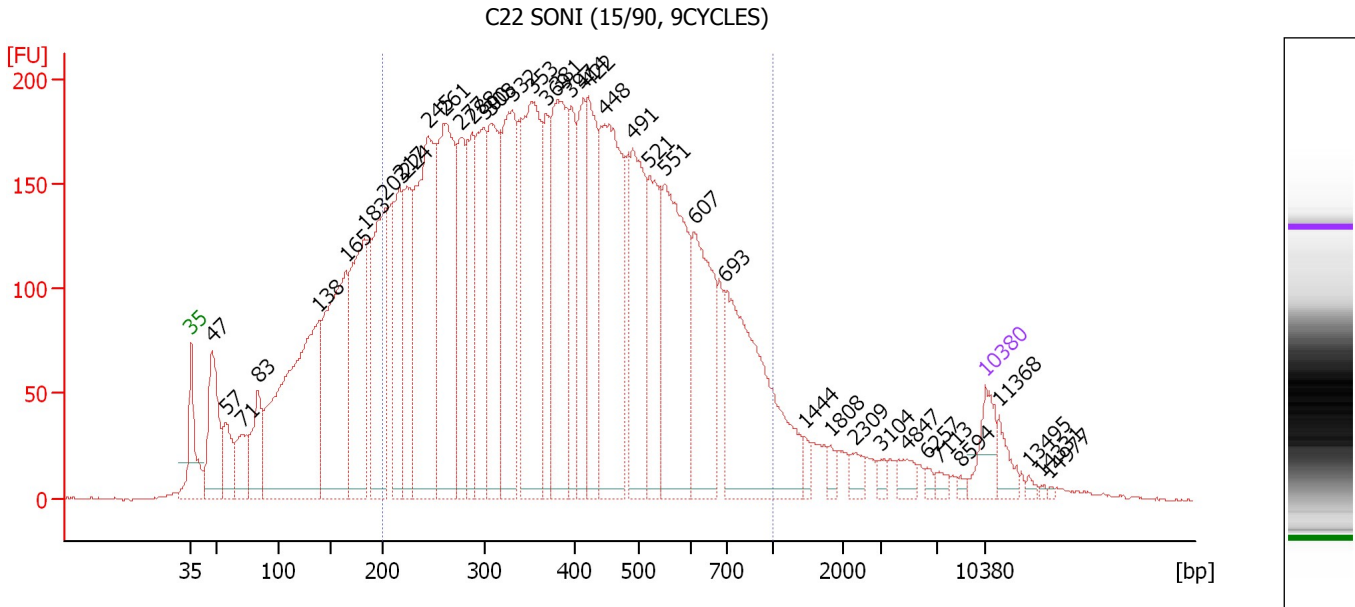
**Region table for sample 4 : C23 SONI (15/90, 9CYCLES)**

From [bp]	Molarity [pmol/l]	Average Size [bp]	Conc. [pg/μl]	To [bp]	Corr. Area	% of Total	Size distribution in CV [%]	Color
200	54,162.1	403	12,013.40	1,000	8,844.9	75	38.1	

Assay Class: High Sensitivity DNA Assay  
 Data Path: C:\...ents and Settings\Bioanalyzer\2012-02-14\2012-02-14\_001.xad

Created: 2/14/2012 12:09:17 PM  
 Modified: 2/14/2012 12:50:41 PM

**Electropherogram Summary Continued ...**



**Overall Results for sample 5 : C22 SONI (15/90, 9CYCLES)**

Number of peaks found: 41                      Corr. Area 1: 7,174.5  
 Noise: 0.4

**Peak table for sample 5 : C22 SONI (15/90, 9CYCLES)**


Peak	Size [bp]	Conc. [pg/μl]	Molarity [pmol/l]	Observations
1	35	125.00	5,411.3	Lower Marker
2	47	336.65	10,839.9	
3	57	161.39	4,277.8	
4	71	143.90	3,086.5	
5	83	212.99	3,876.7	
6	138	1,157.19	12,704.7	
7	165	768.24	7,046.0	
8	183	597.09	4,951.3	
9	203	561.92	4,196.9	
10	217	366.01	2,555.2	
11	224	326.71	2,211.3	
12	245	870.41	5,386.0	
13	261	780.73	4,539.2	
14	277	330.34	1,807.7	
15	288	323.30	1,698.4	
16	300	415.01	2,096.2	
17	308	465.99	2,290.8	
18	332	560.00	2,557.5	
19	353	699.02	3,000.7	
20	369	249.56	1,025.1	
21	381	582.71	2,316.0	
22	397	221.36	845.8	
23	414	267.33	977.6	
24	422	370.02	1,329.0	
25	448	694.86	2,351.2	
26	491	419.96	1,295.1	

Assay Class: High Sensitivity DNA Assay  
 Data Path: C:\...ents and Settings\Bioanalyzer\2012-02-14\2012-02-14\_001.xad


Created: 2/14/2012 12:09:17 PM  
 Modified: 2/14/2012 12:50:41 PM

**Electropherogram Summary Continued ...**

**... Peak table for sample 5 : C22 SONI (15/90, 9CYCLES)**

Peak	Size [bp]	Conc. [pg/µl]	Molarity [pmol/l]	Observations
27	521	288.05	838.3	
28	551	565.51	1,555.8	
29	607	386.38	964.1	
30	693	629.02	1,374.8	
31	1,444	22.64	23.7	
32	1,808	20.59	17.3	
33	2,309	29.25	19.2	
34	3,104	15.68	7.7	
35	4,847	32.00	10.0	
36	6,257	11.04	2.7	
37	7,113	15.28	3.3	
38	8,594	7.58	1.3	
39	 10,380	75.00	10.9	Upper Marker
40	11,368	0.00	0.0	
41	13,495	0.00	0.0	
42	14,331	0.00	0.0	
43	14,977	0.00	0.0	

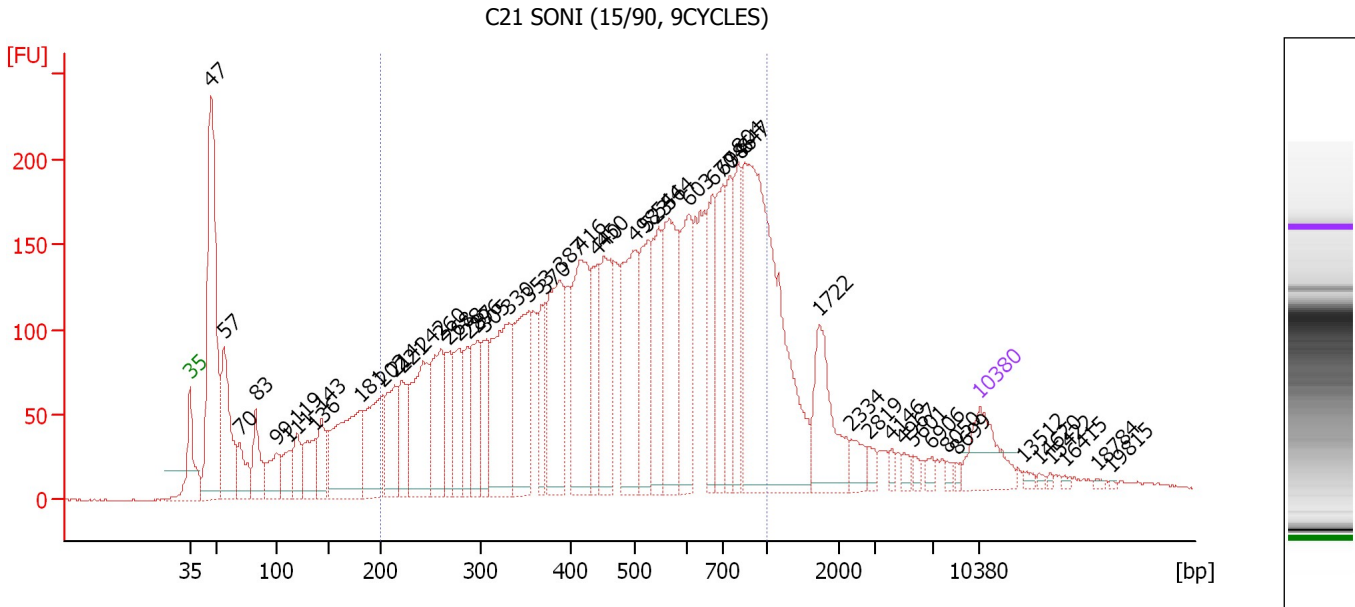
**Region table for sample 5 : C22 SONI (15/90, 9CYCLES)**

From [bp]	Molarity [pmol/l]	Average Size [bp]	Conc. [pg/µl]	To [bp]	Corr. Area	% of Total	Size distribution in CV [%]	Color
200	45,829.5	415	10,371.29	1,000	7,174.5	73	38.8	

Assay Class: High Sensitivity DNA Assay  
 Data Path: C:\...ents and Settings\Bioanalyzer\2012-02-14\2012-02-14\_001.xad

Created: 2/14/2012 12:09:17 PM  
 Modified: 2/14/2012 12:50:41 PM

**Electropherogram Summary Continued ...**



**Overall Results for sample 6 : C21 SONI (15/90, 9CYCLES)**

Number of peaks found: 52                      Corr. Area 1: 5,503.2  
 Noise: 0.5

**Peak table for sample 6 : C21 SONI (15/90, 9CYCLES)**

Peak	Size [bp]	Conc. [pg/μl]	Molarity [pmol/l]	Observations
1	35	125.00	5,411.3	Lower Marker
2	47	613.78	19,735.9	
3	57	240.46	6,405.5	
4	70	82.35	1,794.0	
5	83	98.42	1,803.9	
6	99	82.43	1,258.1	
7	111	62.31	847.1	
8	119	68.53	871.4	
9	136	93.38	1,039.6	
10	143	81.67	866.8	
11	181	274.67	2,298.9	
12	202	176.03	1,318.3	
13	214	141.62	1,000.6	
14	221	98.88	677.0	
15	242	227.00	1,418.7	
16	260	173.09	1,009.3	
17	268	92.53	523.6	
18	278	109.77	598.7	
19	287	90.91	480.4	
20	296	110.01	562.7	
21	305	97.54	485.0	
22	330	254.23	1,166.8	
23	353	230.60	990.8	
24	370	88.30	361.2	
25	387	233.28	913.4	
26	416	252.43	919.5	

Assay Class: High Sensitivity DNA Assay  
 Data Path: C:\...ents and Settings\Bioanalyzer\2012-02-14\2012-02-14\_001.xad


Created: 2/14/2012 12:09:17 PM  
 Modified: 2/14/2012 12:50:41 PM

**Electropherogram Summary Continued ...**

**... Peak table for sample 6 : C21 SONI (15/90, 9CYCLES)**

Peak	Size [bp]	Conc. [pg/µl]	Molarity [pmol/l]	Observations
27	440	125.08	430.4	
28	450	177.28	597.4	
29	498	248.50	755.4	
30	523	146.72	424.8	
31	544	155.01	431.4	
32	564	226.76	609.6	
33	603	169.88	427.0	
34	670	124.93	282.5	
35	698	145.43	315.6	
36	746	100.11	203.2	
37	804	130.24	245.4	
38	847	624.00	1,115.6	
39	1,722	130.26	114.6	
40	2,334	26.55	17.2	
41	2,819	14.81	8.0	
42	4,146	9.42	3.4	
43	4,967	11.84	3.6	
44	5,601	10.01	2.7	
45	6,906	10.06	2.2	
46	8,050	6.93	1.3	
47	8,699	5.61	1.0	
48	10,380	75.00	10.9	Upper Marker
49	13,512	0.00	0.0	
50	14,620	0.00	0.0	
51	15,422	0.00	0.0	
52	16,415	0.00	0.0	
53	18,784	0.00	0.0	
54	19,815	0.00	0.0	

**Region table for sample 6 : C21 SONI (15/90, 9CYCLES)**

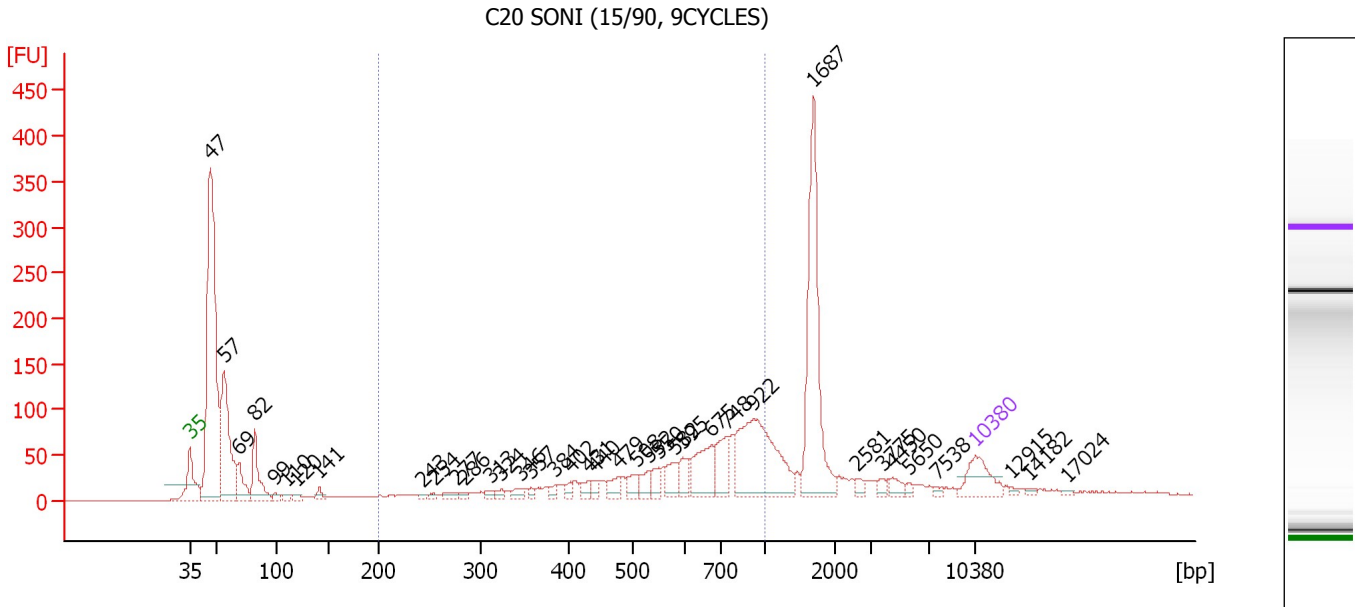
From [bp]	Molarity [pmol/l]	Average Size [bp]	Conc. [pg/µl]	To [bp]	Corr. Area	% of Total	Size distribution in CV [%]	Color
200	17,957.6	508	4,749.94	1,000	5,503.2	70	39.4	



Assay Class: High Sensitivity DNA Assay  
 Data Path: C:\...ents and Settings\Bioanalyzer\2012-02-14\2012-02-14\_001.xad

Created: 2/14/2012 12:09:17 PM  
 Modified: 2/14/2012 12:50:41 PM

**Electropherogram Summary Continued ...**



**Overall Results for sample 7 : C20 SONI (15/90, 9CYCLES)**

Number of peaks found: 38                      Corr. Area 1: 1,017.2  
 Noise: 0.6

**Peak table for sample 7 : C20 SONI (15/90, 9CYCLES)**

Peak	Size [bp]	Conc. [pg/μl]	Molarity [pmol/l]	Observations
1	35	125.00	5,411.3	Lower Marker
2	47	1,220.76	39,459.6	
3	57	457.08	12,143.8	
4	69	101.87	2,240.3	
5	82	165.30	3,051.5	
6	99	15.50	237.7	
7	110	11.64	160.4	
8	120	14.96	188.5	
9	141	22.26	238.5	
10	243	8.88	55.4	
11	254	9.75	58.1	
12	277	18.80	103.0	
13	286	11.66	61.8	
14	313	13.34	64.6	
15	324	14.87	69.5	
16	346	19.51	85.4	
17	357	11.47	48.7	
18	384	16.87	66.5	
19	402	18.31	68.9	
20	431	25.32	89.0	
21	440	17.00	58.5	
22	479	35.48	112.4	
23	508	35.91	107.2	
24	532	35.56	101.3	
25	550	33.91	93.4	
26	582	52.98	138.0	

Assay Class: High Sensitivity DNA Assay  
 Data Path: C:\...ents and Settings\Bioanalyzer\2012-02-14\2012-02-14\_001.xad


Created: 2/14/2012 12:09:17 PM  
 Modified: 2/14/2012 12:50:41 PM

**Electropherogram Summary Continued ...**

**... Peak table for sample 7 : C20 SONI (15/90, 9CYCLES)**

Peak	Size [bp]	Conc. [pg/μl]	Molarity [pmol/l]	Observations
27	595	47.53	121.1	
28	675	130.80	293.6	
29	748	92.47	187.3	
30	922	349.96	574.9	
31	1,687	408.82	367.2	
32	2,581	11.36	6.7	
33	3,775	12.21	4.9	
34	4,450	19.69	6.7	
35	5,650	7.79	2.1	
36	7,538	7.38	1.5	
37	10,380	75.00	10.9	Upper Marker
38	12,915	0.00	0.0	
39	14,182	0.00	0.0	
40	17,024	0.00	0.0	

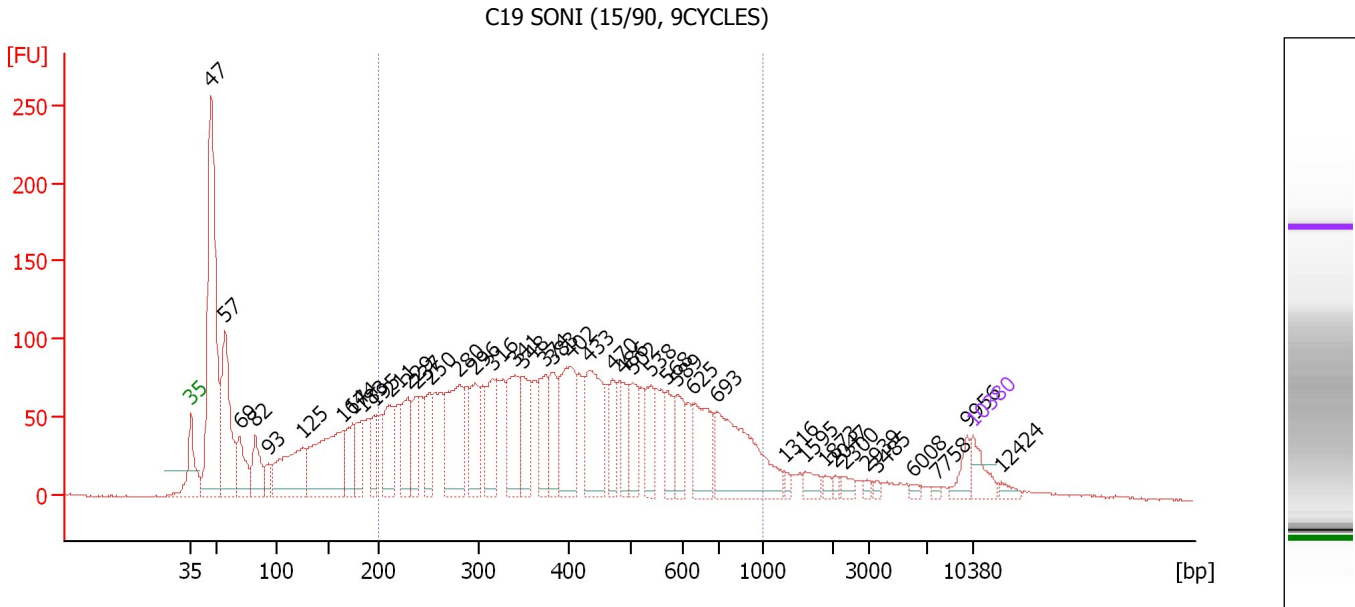
**Region table for sample 7 : C20 SONI (15/90, 9CYCLES)**

From [bp]	Molarity [pmol/l]	Average Size [bp]	Conc. [pg/μl]	To [bp]	Corr. Area	% of Total	Size distribution in CV [%]	Color
200	3,187.5	627	1,082.38	1,000	1,017.2	33	32.2	

Assay Class: High Sensitivity DNA Assay  
 Data Path: C:\...ents and Settings\Bioanalyzer\2012-02-14\2012-02-14\_001.xad

Created: 2/14/2012 12:09:17 PM  
 Modified: 2/14/2012 12:50:41 PM

**Electropherogram Summary Continued ...**



**Overall Results for sample 8 : C19 SONI (15/90, 9CYCLES)**

Number of peaks found: 42                      Corr. Area 1: 3,091.3  
 Noise: 0.6

**Peak table for sample 8 : C19 SONI (15/90, 9CYCLES)**

Peak	Size [bp]	Conc. [pg/μl]	Molarity [pmol/l]	Observations
1	35	125.00	5,411.3	Lower Marker
2	47	1,494.87	48,269.8	
3	57	646.05	17,129.7	
4	69	232.40	5,066.7	
5	82	202.52	3,728.7	
6	93	83.43	1,360.9	
7	125	445.93	5,391.4	
8	164	608.50	5,629.0	
9	174	183.93	1,599.4	
10	183	159.99	1,323.6	
11	195	142.86	1,112.1	
12	211	243.27	1,746.4	
13	229	238.01	1,573.6	
14	237	156.89	1,004.6	
15	250	180.37	1,091.0	
16	280	424.05	2,292.0	
17	296	235.25	1,203.0	
18	316	220.44	1,058.4	
19	341	305.57	1,359.0	
20	348	231.64	1,007.3	
21	374	199.50	807.9	
22	383	190.05	752.8	
23	402	366.16	1,379.0	
24	433	381.21	1,334.3	
25	470	136.20	438.8	
26	486	123.61	385.7	

Assay Class: High Sensitivity DNA Assay  
 Data Path: C:\...ents and Settings\Bioanalyzer\2012-02-14\2012-02-14\_001.xad


Created: 2/14/2012 12:09:17 PM  
 Modified: 2/14/2012 12:50:41 PM

**Electropherogram Summary Continued ...**

**... Peak table for sample 8 : C19 SONI (15/90, 9CYCLES)**

Peak	Size [bp]	Conc. [pg/µl]	Molarity [pmol/l]	Observations
27	502	163.53	493.6	
28	538	135.94	383.1	
29	568	121.51	324.0	
30	589	133.96	344.9	
31	625	242.92	588.8	
32	693	498.93	1,090.9	
33	1,316	17.24	19.8	
34	1,595	43.83	41.6	
35	1,873	20.76	16.8	
36	2,047	13.19	9.8	
37	2,300	27.15	17.9	
38	2,939	11.27	5.8	
39	3,485	10.64	4.6	
40	6,008	13.59	3.4	
41	7,758	10.17	2.0	
42	9,956	53.25	8.1	
43	10,380	75.00	10.9	Upper Marker
44	12,424	0.00	0.0	

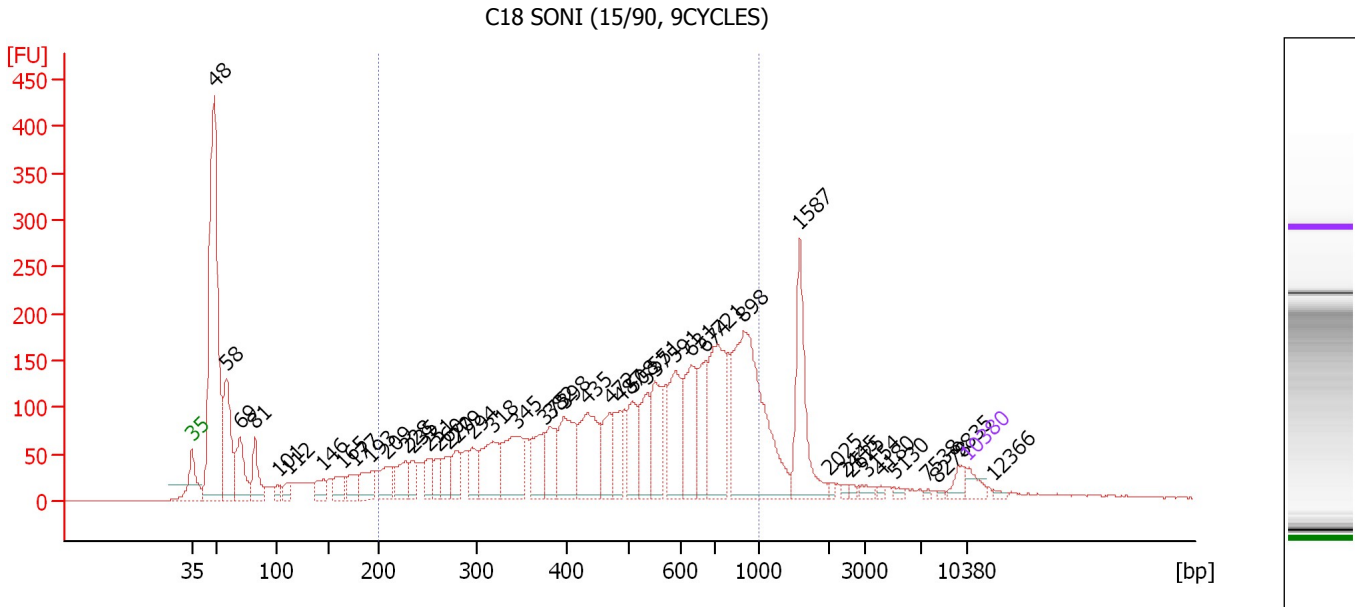
**Region table for sample 8 : C19 SONI (15/90, 9CYCLES)**

From [bp]	Molarity [pmol/l]	Average Size [bp]	Conc. [pg/µl]	To [bp]	Corr. Area	% of Total	Size distribution in CV [%]	Color
200	28,644.6	431	6,651.48	1,000	3,091.3	63	39.4	

Assay Class: High Sensitivity DNA Assay  
 Data Path: C:\...ents and Settings\Bioanalyzer\2012-02-14\2012-02-14\_001.xad

Created: 2/14/2012 12:09:17 PM  
 Modified: 2/14/2012 12:50:41 PM

**Electropherogram Summary Continued ...**



**Overall Results for sample 9 : C18 SONI (15/90, 9CYCLES)**

Number of peaks found: 45                      Corr. Area 1: 3,813.2  
 Noise: 0.5

**Peak table for sample 9 : C18 SONI (15/90, 9CYCLES)**

Peak	Size [bp]	Conc. [pg/μl]	Molarity [pmol/l]	Observations
1	35	125.00	5,411.3	Lower Marker
2	48	3,698.55	116,010.7	
3	58	933.40	24,441.7	
4	69	543.92	11,867.3	
5	81	371.94	6,917.1	
6	101	84.81	1,275.6	
7	112	108.06	1,458.7	
8	146	145.84	1,516.3	
9	165	198.85	1,823.6	
10	177	192.71	1,646.3	
11	193	254.04	1,997.7	
12	209	262.43	1,900.6	
13	228	279.91	1,864.2	
14	235	162.92	1,050.3	
15	251	185.86	1,121.2	
16	260	151.12	879.6	
17	270	188.11	1,055.6	
18	279	240.26	1,304.1	
19	294	234.90	1,209.8	
20	318	506.74	2,417.2	
21	345	597.96	2,627.7	
22	375	349.20	1,411.1	
23	382	326.06	1,292.6	
24	398	528.47	2,009.4	
25	435	679.94	2,369.8	
26	472	345.05	1,108.6	

Assay Class: High Sensitivity DNA Assay  
 Data Path: C:\...ents and Settings\Bioanalyzer\2012-02-14\2012-02-14\_001.xad


Created: 2/14/2012 12:09:17 PM  
 Modified: 2/14/2012 12:50:41 PM

**Electropherogram Summary Continued ...**

**... Peak table for sample 9 : C18 SONI (15/90, 9CYCLES)**

Peak	Size [bp]	Conc. [pg/µl]	Molarity [pmol/l]	Observations
27	487	269.47	838.3	
28	508	366.85	1,094.0	
29	537	392.85	1,108.7	
30	551	412.63	1,134.2	
31	591	534.68	1,370.1	
32	631	536.47	1,287.7	
33	674	376.02	845.5	
34	721	886.35	1,862.1	
35	898	1,609.27	2,715.9	
36	1,587	618.68	590.7	
37	2,025	21.03	15.7	
38	2,445	19.62	12.2	
39	2,625	23.76	13.7	
40	3,154	38.98	18.7	
41	4,180	21.68	7.9	
42	5,130	24.60	7.3	
43	7,538	10.49	2.1	
44	8,278	9.89	1.8	
45	9,835	77.71	12.0	
46	10,380	75.00	10.9	Upper Marker
47	12,366	0.00	0.0	

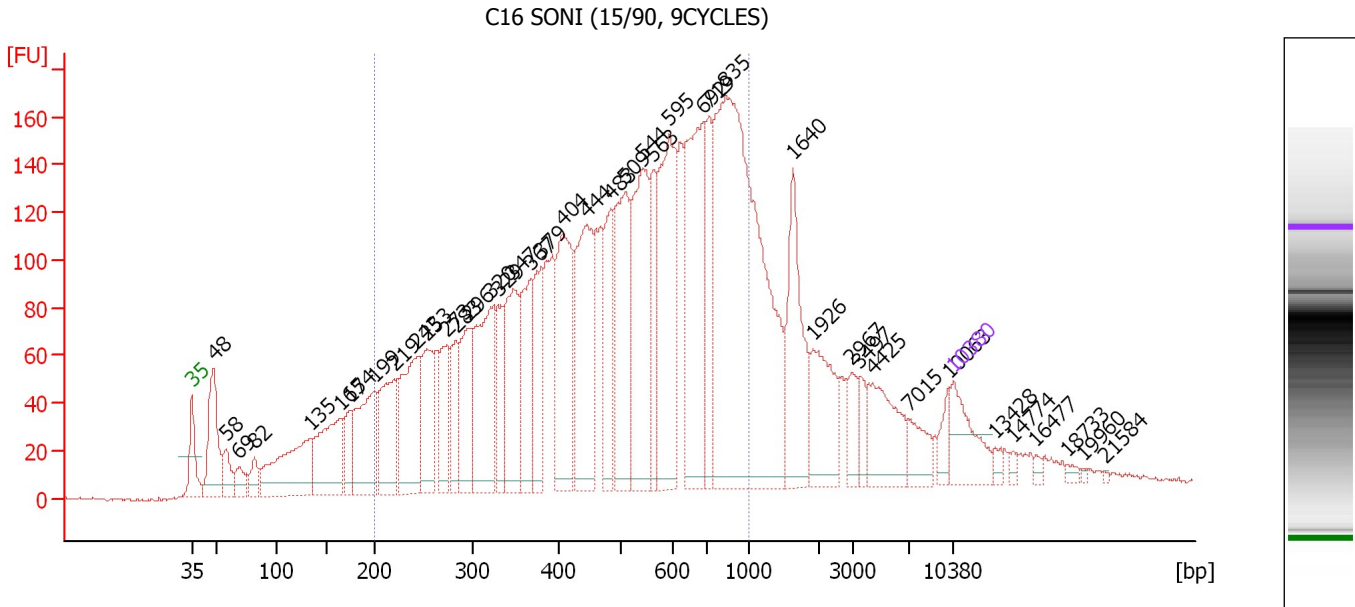
**Region table for sample 9 : C18 SONI (15/90, 9CYCLES)**

From [bp]	Molarity [pmol/l]	Average Size [bp]	Conc. [pg/µl]	To [bp]	Corr. Area	% of Total	Size distribution in CV [%]	Color
200	38,855.6	539	10,921.94	1,000	3,813.2	61	37.8	

Assay Class: High Sensitivity DNA Assay  
 Data Path: C:\...ents and Settings\Bioanalyzer\2012-02-14\2012-02-14\_001.xad

Created: 2/14/2012 12:09:17 PM  
 Modified: 2/14/2012 12:50:41 PM

**Electropherogram Summary Continued ...**



**Overall Results for sample 10 : C16 SONI (15/90, 9CYCLES)**

Number of peaks found: 42      Corr. Area 1: 4,392.8  
 Noise: 0.8

**Peak table for sample 10 : C16 SONI (15/90, 9CYCLES)**

Peak	Size [bp]	Conc. [pg/μl]	Molarity [pmol/l]	Observations
1	35	125.00	5,411.3	Lower Marker
2	48	200.40	6,298.6	
3	58	60.25	1,576.7	
4	69	41.46	907.6	
5	82	39.96	735.2	
6	135	255.80	2,879.5	
7	165	206.92	1,899.5	
8	174	71.13	618.8	
9	199	209.94	1,595.1	
10	219	182.66	1,263.2	
11	243	242.77	1,512.7	
12	253	148.45	889.0	
13	273	115.06	638.0	
14	283	103.03	552.5	
15	296	163.55	836.6	
16	320	257.61	1,218.6	
17	329	94.58	435.7	
18	347	205.73	899.2	
19	367	163.98	677.2	
20	379	128.00	511.5	
21	404	259.76	973.2	
22	444	275.94	942.4	
23	483	127.03	398.6	
24	509	246.64	734.5	
25	544	305.28	849.8	
26	563	115.95	312.0	

Assay Class: High Sensitivity DNA Assay  
 Data Path: C:\...ents and Settings\Bioanalyzer\2012-02-14\2012-02-14\_001.xad


Created: 2/14/2012 12:09:17 PM  
 Modified: 2/14/2012 12:50:41 PM

**Electropherogram Summary Continued ...**

**... Peak table for sample 10 : C16 SONI (15/90, 9CYCLES)**

Peak	Size [bp]	Conc. [pg/µl]	Molarity [pmol/l]	Observations
27	595	309.68	788.0	
28	692	354.91	776.8	
29	719	118.49	249.8	
30	835	928.90	1,686.4	
31	1,640	179.77	166.1	
32	1,926	120.42	94.7	
33	2,967	43.46	22.2	
34	3,497	27.08	11.7	
35	4,425	111.32	38.1	
36	7,015	44.07	9.5	
37	10,063	28.37	4.3	
38	10,380	75.00	10.9	Upper Marker
39	13,428	0.00	0.0	
40	14,774	0.00	0.0	
41	16,477	0.00	0.0	
42	18,733	0.00	0.0	
43	19,960	0.00	0.0	
44	21,584	0.00	0.0	

**Region table for sample 10 : C16 SONI (15/90, 9CYCLES)**

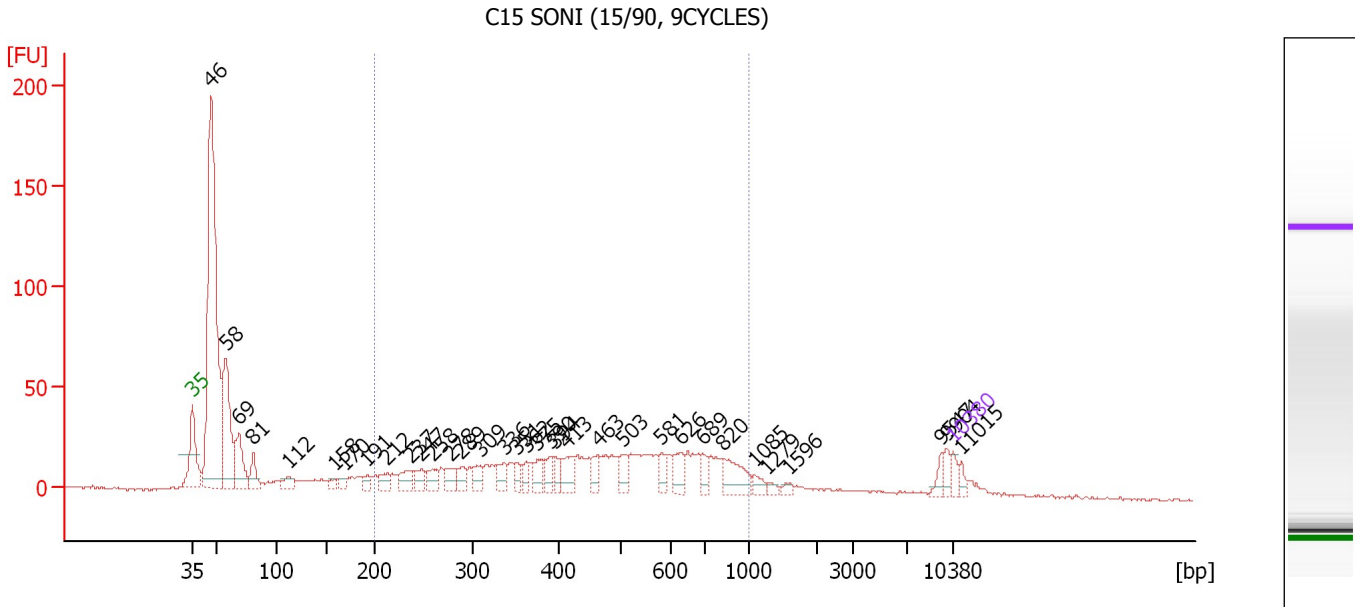
From [bp]	Molarity [pmol/l]	Average Size [bp]	Conc. [pg/µl]	To [bp]	Corr. Area	% of Total	Size distribution in CV [%]	Color
200	19,018.3	516	5,141.65	1,000	4,392.8	71	38.4	



Assay Class: High Sensitivity DNA Assay  
 Data Path: C:\...ents and Settings\Bioanalyzer\2012-02-14\2012-02-14\_001.xad

Created: 2/14/2012 12:09:17 PM  
 Modified: 2/14/2012 12:50:41 PM

**Electropherogram Summary Continued ...**



**Overall Results for sample 11 : C15 SONI (15/90, 9CYCLES)**

Number of peaks found: 34                      Corr. Area 1: 679.5  
 Noise: 0.6

**Peak table for sample 11 : C15 SONI (15/90, 9CYCLES)**

Peak	Size [bp]	Conc. [pg/μl]	Molarity [pmol/l]	Observations
1	35	125.00	5,411.3	Lower Marker
2	46	5,085.68	166,437.2	
3	58	1,471.81	38,781.3	
4	69	613.29	13,496.4	
5	81	262.70	4,935.1	
6	112	157.60	2,133.5	
7	158	74.38	711.6	
8	170	98.02	875.3	
9	191	94.00	744.9	
10	212	149.05	1,066.0	
11	237	211.87	1,357.3	
12	247	167.95	1,030.5	
13	258	173.56	1,017.5	
14	278	169.38	922.6	
15	289	162.84	855.0	
16	309	161.10	790.7	
17	336	181.40	818.6	
18	351	112.79	487.5	
19	362	120.06	503.1	
20	375	166.20	672.4	
21	390	144.47	561.5	
22	394	124.76	479.6	
23	413	228.19	837.8	
24	463	134.31	439.2	
25	503	164.25	494.5	
26	581	134.55	351.1	

Assay Class: High Sensitivity DNA Assay  
 Data Path: C:\...ents and Settings\Bioanalyzer\2012-02-14\2012-02-14\_001.xad


Created: 2/14/2012 12:09:17 PM  
 Modified: 2/14/2012 12:50:41 PM

**Electropherogram Summary Continued ...**

**... Peak table for sample 11 : C15 SONI (15/90, 9CYCLES)**

Peak	Size [bp]	Conc. [pg/µl]	Molarity [pmol/l]	Observations
27	626	185.20	448.5	
28	689	113.84	250.3	
29	820	335.05	619.1	
30	1,085	78.18	109.2	
31	1,279	43.50	51.5	
32	1,596	43.30	41.1	
33	9,547	80.58	12.8	
34	9,904	94.48	14.5	
35	10,380	75.00	10.9	Upper Marker
36	11,015	0.00	0.0	

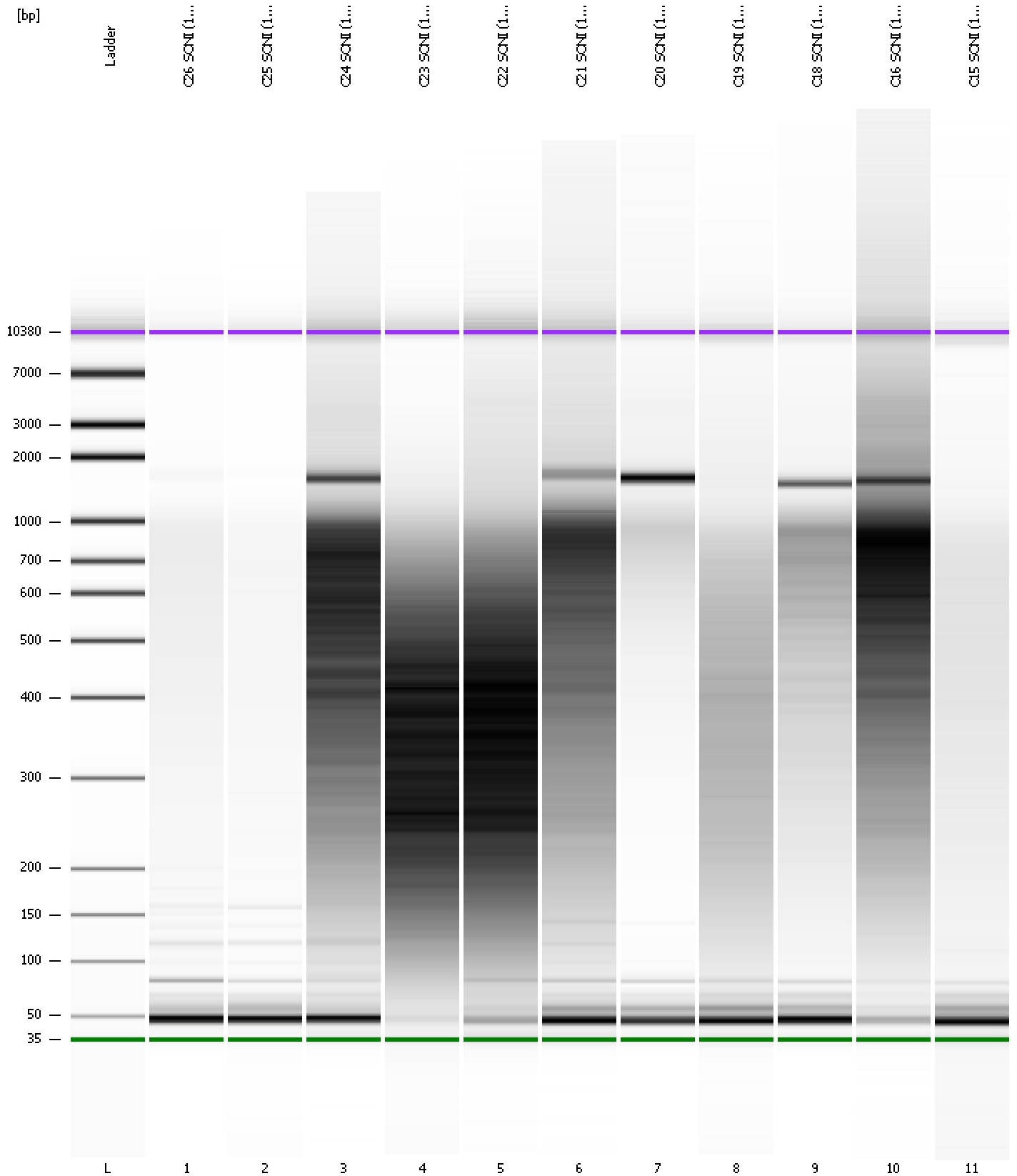
**Region table for sample 11 : C15 SONI (15/90, 9CYCLES)**

From [bp]	Molarity [pmol/l]	Average Size [bp]	Conc. [pg/µl]	To [bp]	Corr. Area	% of Total	Size distribution in CV [%]	Color
200	23,512.8	484	6,044.29	1,000	679.5	46	38.3	

Assay Class: High Sensitivity DNA Assay  
Data Path: C:\...ents and Settings\Bioanalyzer\2012-02-14\2012-02-14\_001.xad

Created: 2/14/2012 12:09:17 PM  
Modified: 2/14/2012 12:50:41 PM

**Gel Image**



Assay Class: High Sensitivity DNA Assay  
 Data Path: C:\...ents and Settings\Bioanalyzer\2012-02-14\2012-02-14\_001.xad

Created: 2/14/2012 12:09:17 PM  
 Modified: 2/14/2012 12:50:41 PM

**Run Logbook**

Description	Number	Source	Category	Sub Category	Time	Time Zone	User	Host
Run ended on port 1 (Number of wells acquired: 12)		Instrument	Run		2/14/2012 12:50:36 PM	(GMT --08:00) Pacific Standard Time	UC Davis	D8XSMGH1
Run started on port 1 (File: C:\Documents and Settings\Bioanalyzer\2012-02-14\2012-02-14_001.xad)		Instrument	Run		2/14/2012 12:09:22 PM	(GMT --08:00) Pacific Standard Time	UC Davis	D8XSMGH1
Product Number : G2938B		Instrument	Run		2/14/2012 12:09:22 PM	(GMT --08:00) Pacific Standard Time	UC Davis	D8XSMGH1
Name :		Instrument	Run		2/14/2012 12:09:22 PM	(GMT --08:00) Pacific Standard Time	UC Davis	D8XSMGH1
Vendor : Agilent Technologies		Instrument	Run		2/14/2012 12:09:22 PM	(GMT --08:00) Pacific Standard Time	UC Davis	D8XSMGH1
Serial# : DE13701086		Instrument	Run		2/14/2012 12:09:22 PM	(GMT --08:00) Pacific Standard Time	UC Davis	D8XSMGH1
Firmware : C.01.069		Instrument	Run		2/14/2012 12:09:22 PM	(GMT --08:00) Pacific Standard Time	UC Davis	D8XSMGH1
Cartridge : Electrode		Instrument	Run		2/14/2012 12:09:22 PM	(GMT --08:00) Pacific Standard Time	UC Davis	D8XSMGH1