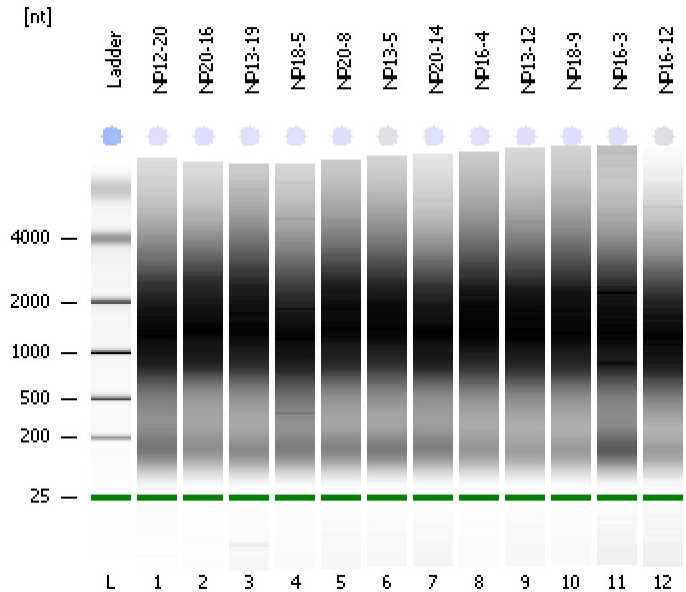


Assay Class: Eukaryote Total RNA Nano
Data Path: C:\...ents and Settings\Bioanalyzer\2012-02-14\2012-02-14_003.xad

Created: 2/14/2012 2:17:44 PM
Modified: 2/14/2012 2:48:34 PM

Electrophoresis File Run Summary



Instrument Information:

Instrument Name: DE13701086 Firmware: C.01.069
Serial#: DE13701086 Type: G2938B

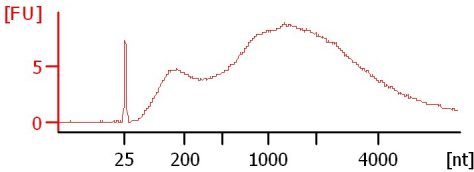
Assay Information:

Assay Origin Path: C:\Program Files\Agilent\2100 bioanalyzer\2100 expert\assays\RNA\Eukaryote Total RNA Nano Series II.xsy
Assay Class: Eukaryote Total RNA Nano
Version: 2.6
Assay Comments: Total RNA Analysis ng sensitivity (Eukaryote)
© Copyright 2003 - 2009 Agilent Technologies, Inc.

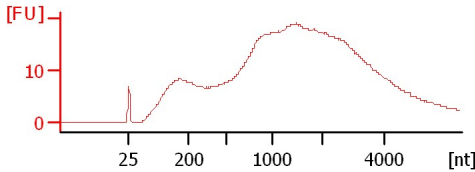
Chip Information:

Chip Lot #:
Reagent Kit Lot #:
Chip Comments:

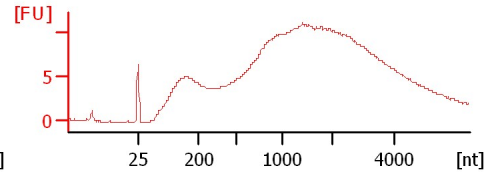
NP12-20
RIN: 3.20



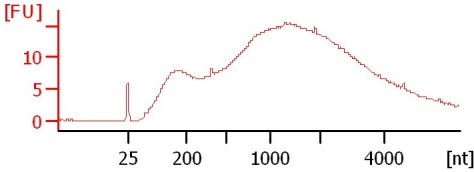
NP20-16
RIN: 2.40



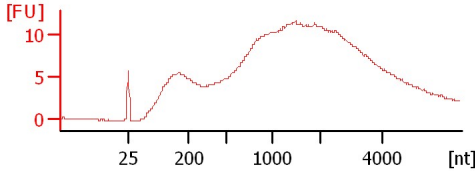
NP13-19
RIN: 2.20



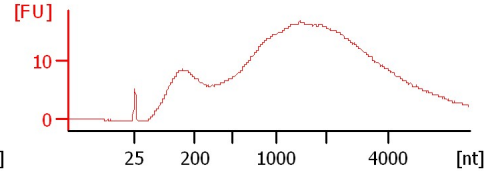
NP18-5
RIN: 2.90



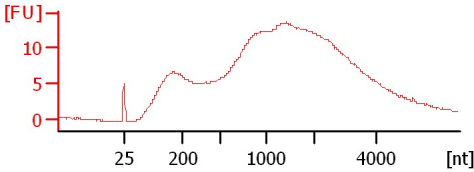
NP20-8
RIN: 2.40



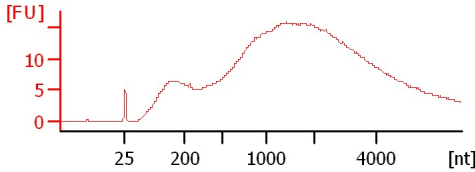
NP13-5
RIN N/A



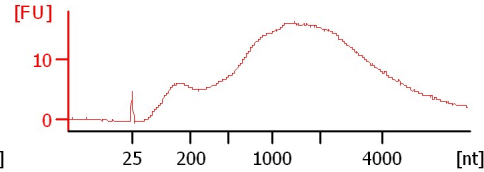
NP20-14
RIN: 3.20



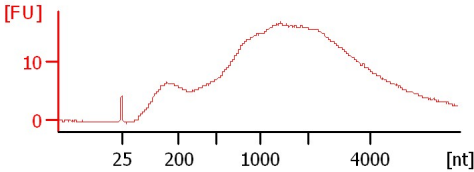
NP16-4
RIN: 2.20



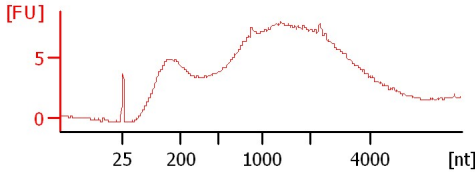
NP13-12
RIN: 2.90



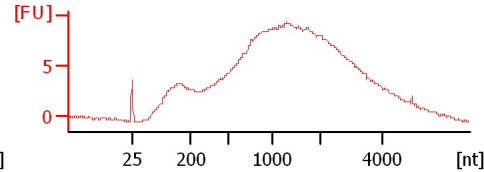
NP18-9
RIN: 2.70



NP16-3
RIN: 2.30



NP16-12
RIN N/A



Assay Class: Eukaryote Total RNA Nano
 Data Path: C:\...ents and Settings\Bioanalyzer\2012-02-14\2012-02-14_003.xad

Created: 2/14/2012 2:17:44 PM
 Modified: 2/14/2012 2:48:34 PM

Electrophoresis File Run Summary (Chip Summary)

Sample Name	Sample Comment	Status	Result Label	Result Color
NP12-20		✓	RIN: 3.20	
NP20-16		✓	RIN: 2.40	
NP13-19		✓	RIN: 2.20	
NP18-5		✓	RIN: 2.90	
NP20-8		✓	RIN: 2.40	
NP13-5		✓	RIN N/A	
NP20-14		✓	RIN: 3.20	
NP16-4		✓	RIN: 2.20	
NP13-12		✓	RIN: 2.90	
NP18-9		✓	RIN: 2.70	
NP16-3		✓	RIN: 2.30	
NP16-12		✓	RIN N/A	
Ladder		✓	All Other Samples	

Chip Lot #

Reagent Kit Lot #

Chip Comments :

Assay Class: Eukaryote Total RNA Nano
Data Path: C:\...ents and Settings\Bioanalyzer\2012-02-14\2012-02-14_003.xad

Created: 2/14/2012 2:17:44 PM
Modified: 2/14/2012 2:48:34 PM

Electrophoresis Assay Details

General Analysis Settings

Number of Available Sample and Ladder Wells (Max.) : 13
Minimum Visible Range [s] : 17
Maximum Visible Range [s] : 70
Start Analysis Time Range [s] : 19
End Analysis Time Range [s] : 69
Ladder Concentration [ng/ μ l] : 150
Lower Marker Concentration [ng/ μ l] : 0
Upper Marker Concentration [ng/ μ l] : 0
Used Lower Marker for Quantitation
Standard Curve Fit is Logarithmic
Show Data Aligned to Lower Marker

Integrator Settings

Integration Start Time [s] : 19
Integration End Time [s] : 69
Slope Threshold : 0.6
Height Threshold [FU] : 0.5
Area Threshold : 0.2
Width Threshold [s] : 0.5
Baseline Plateau [s] : 6

Filter Settings

Filter Width [s] : 0.5
Polynomial Order : 4

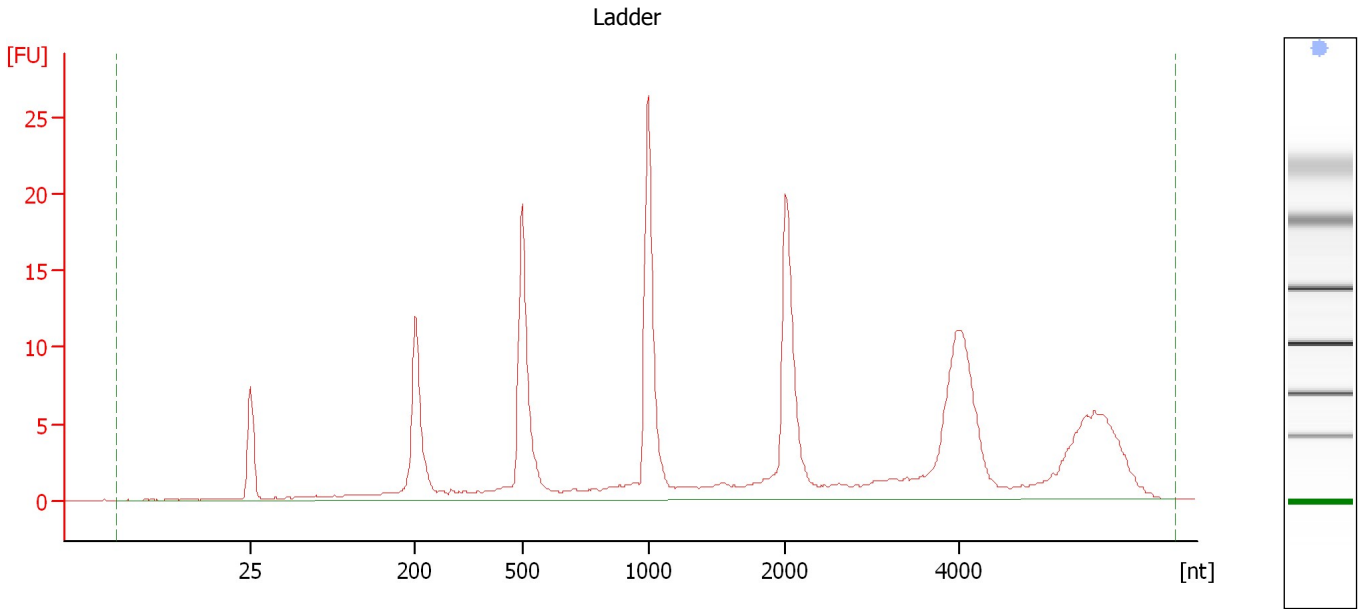
Ladder

Ladder Peak	Size
1	25
2	200
3	500
4	1000
5	2000
6	4000

Assay Class: Eukaryote Total RNA Nano
Data Path: C:\...ents and Settings\Bioanalyzer\2012-02-14\2012-02-14_003.xad

Created: 2/14/2012 2:17:44 PM
Modified: 2/14/2012 2:48:34 PM

Electropherogram Summary



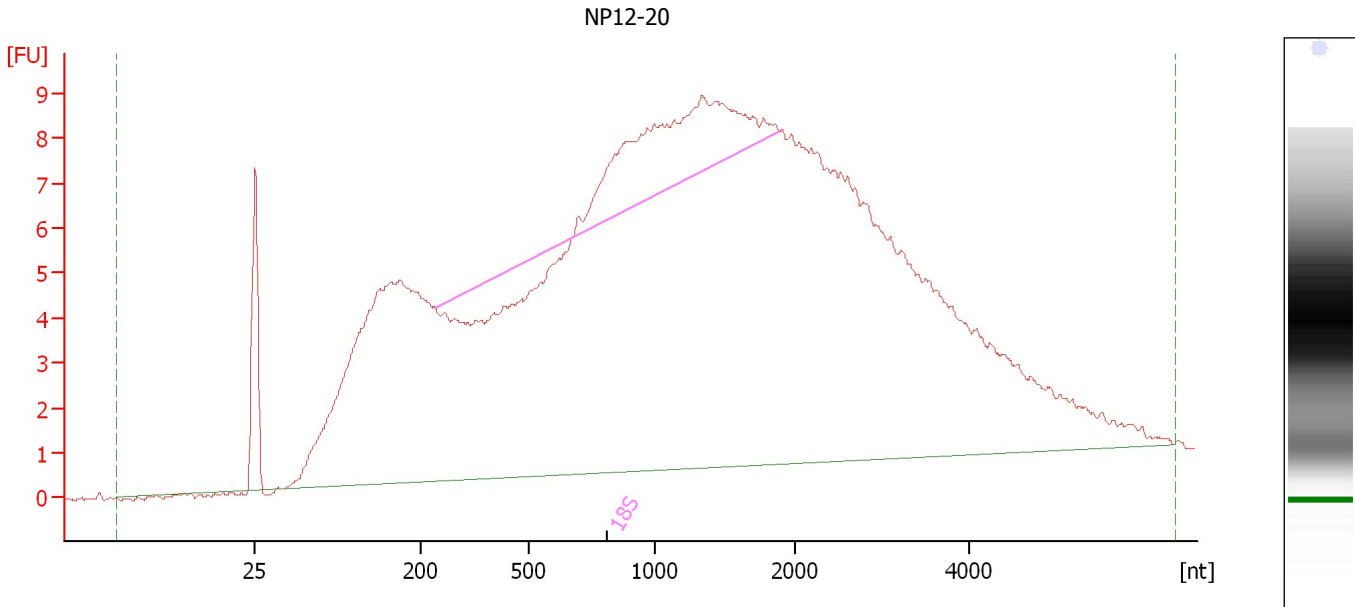
Overall Results for Ladder

RNA Area:	197.0	Result Flagging Color:	
RNA Concentration:	150 ng/μl	Result Flagging Label:	All Other Samples

Assay Class: Eukaryote Total RNA Nano
 Data Path: C:\...ents and Settings\Bioanalyzer\2012-02-14\2012-02-14_003.xad

Created: 2/14/2012 2:17:44 PM
 Modified: 2/14/2012 2:48:34 PM

Electropherogram Summary Continued ...



Overall Results for sample 1 : NP12-20

RNA Area:	392.6	RNA Integrity Number (RIN):	3.2 (B.02.08, Anomaly Threshold(s) manually adapted)
RNA Concentration:	299 ng/μl	Result Flagging Color:	
rRNA Ratio [28s / 18s]:	0.0	Result Flagging Label:	RIN: 3.20

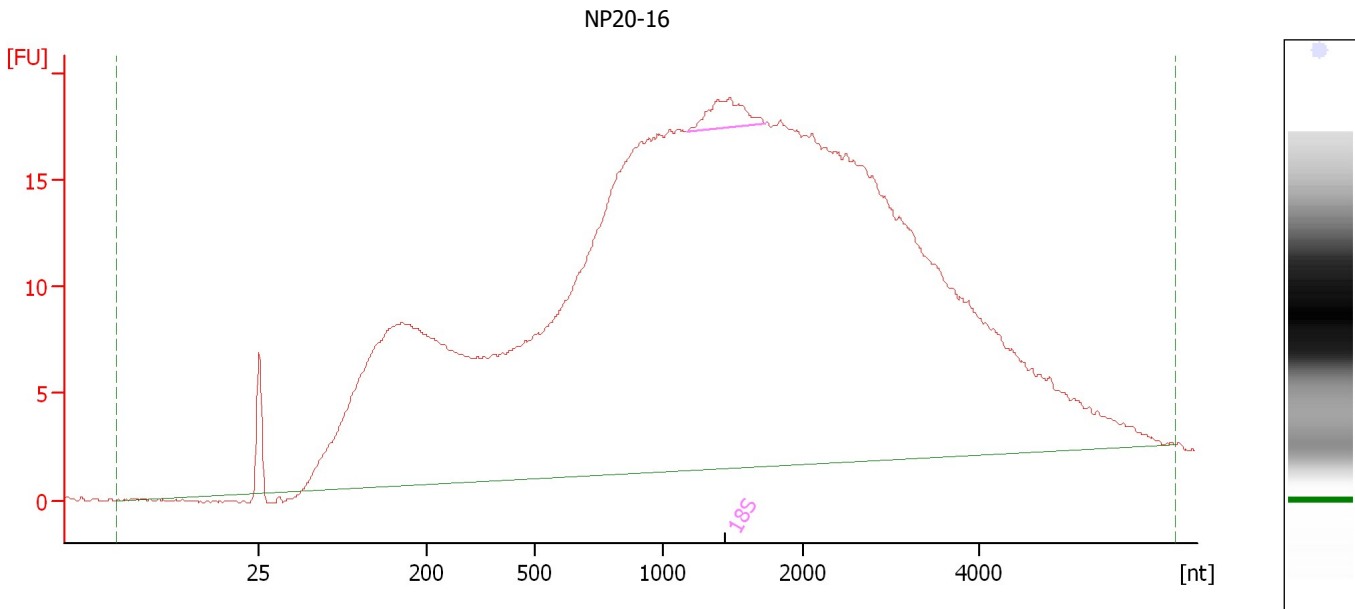
Fragment table for sample 1 : NP12-20

Name	Start Size [nt]	End Size [nt]	Area	% of total Area
18S	241	1,885	22.9	5.8

Assay Class: Eukaryote Total RNA Nano
Data Path: C:\...ents and Settings\Bioanalyzer\2012-02-14\2012-02-14_003.xad

Created: 2/14/2012 2:17:44 PM
Modified: 2/14/2012 2:48:34 PM

Electropherogram Summary Continued ...



Overall Results for sample 2 : NP20-16

RNA Area:	769.3	RNA Integrity Number (RIN):	2.4 (B.02.08, Anomaly Threshold(s) manually adapted)
RNA Concentration:	586 ng/μl	Result Flagging Color:	
rRNA Ratio [28s / 18s]:	0.0	Result Flagging Label:	RIN: 2.40

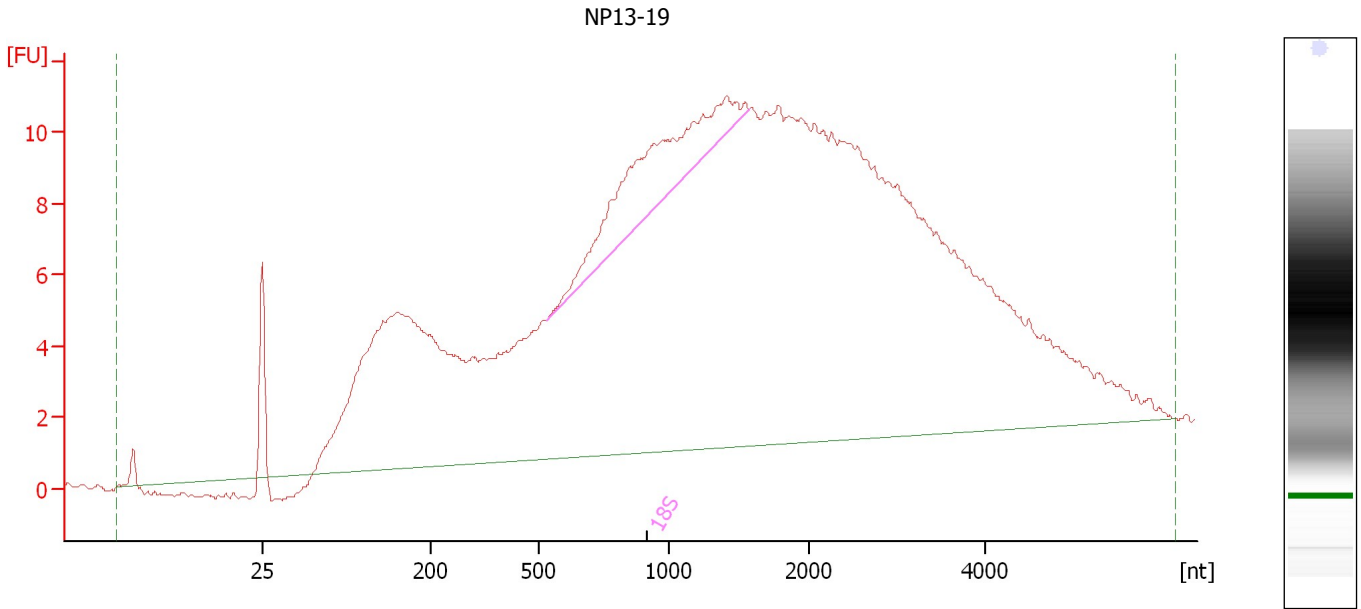
Fragment table for sample 2 : NP20-16

Name	Start Size [nt]	End Size [nt]	Area	% of total Area
18S	1,177	1,726	5.5	0.7

Assay Class: Eukaryote Total RNA Nano
Data Path: C:\...ents and Settings\Bioanalyzer\2012-02-14\2012-02-14_003.xad

Created: 2/14/2012 2:17:44 PM
Modified: 2/14/2012 2:48:34 PM

Electropherogram Summary Continued ...



Setpoint Deviations for sample 3 : NP13-19

Height Threshold [FU] : 0.2 Width Threshold [s] : 0.01

Overall Results for sample 3 : NP13-19

RNA Area:	441.8	RNA Integrity Number (RIN):	2.2 (B.02.08, Anomaly Threshold(s) manually adapted)
RNA Concentration:	336 ng/μl	Result Flagging Color:	
rRNA Ratio [28s / 18s]:	0.0	Result Flagging Label:	RIN: 2.20

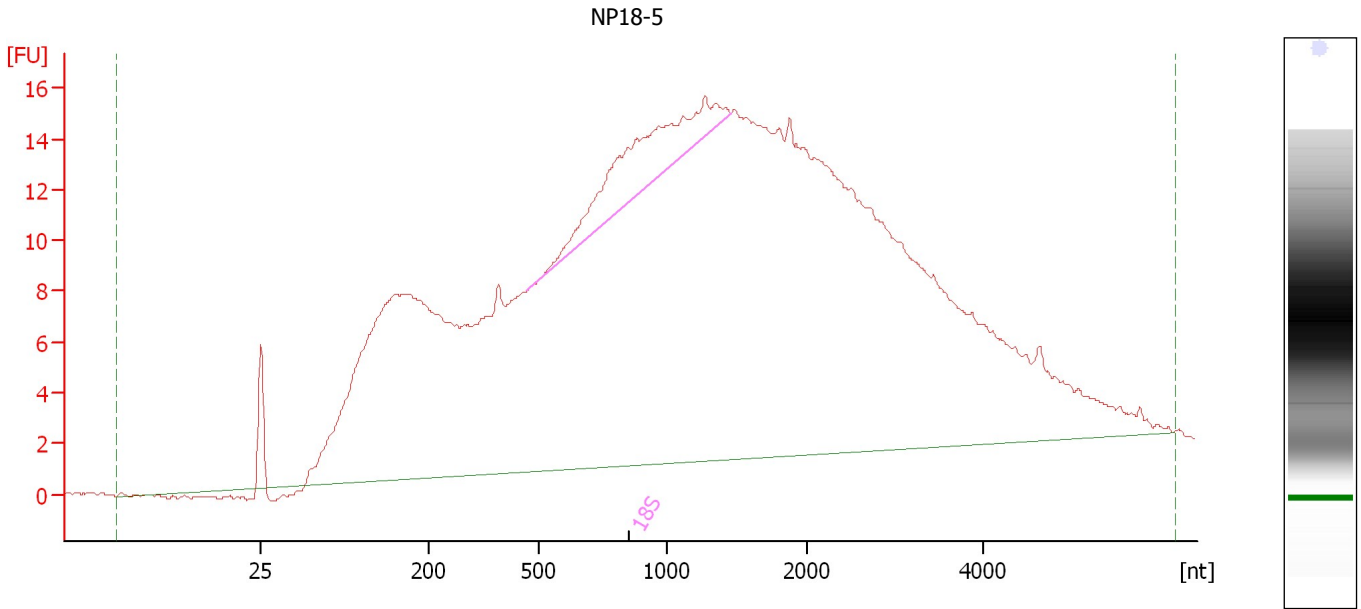
Fragment table for sample 3 : NP13-19

Name	Start Size [nt]	End Size [nt]	Area	% of total Area
18S	527	1,569	21.9	5.0

Assay Class: Eukaryote Total RNA Nano
 Data Path: C:\...ents and Settings\Bioanalyzer\2012-02-14\2012-02-14_003.xad

Created: 2/14/2012 2:17:44 PM
 Modified: 2/14/2012 2:48:34 PM

Electropherogram Summary Continued ...



Overall Results for sample 4 : NP18-5

RNA Area:	662.6	RNA Integrity Number (RIN):	2.9 (B.02.08, Anomaly Threshold(s) manually adapted)
RNA Concentration:	505 ng/μl	Result Flagging Color:	
rRNA Ratio [28s / 18s]:	0.0	Result Flagging Label:	RIN: 2.90

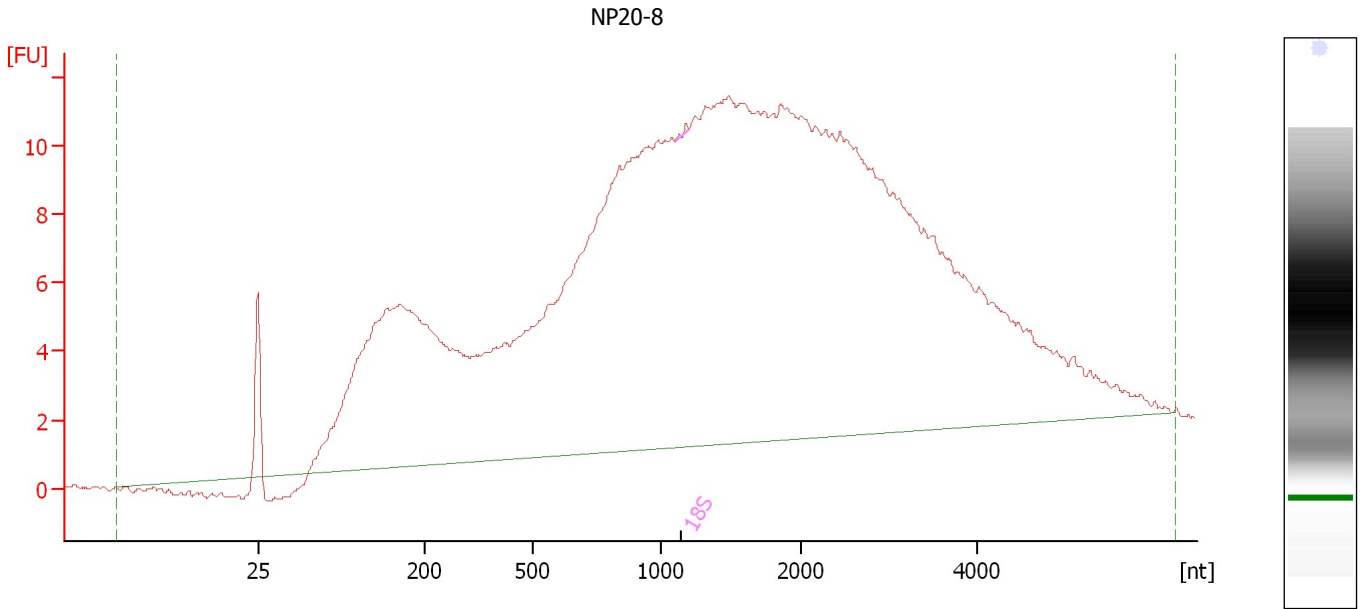
Fragment table for sample 4 : NP18-5

Name	Start Size [nt]	End Size [nt]	Area	% of total Area
18S	470	1,462	25.7	3.9

Assay Class: Eukaryote Total RNA Nano
 Data Path: C:\...ents and Settings\Bioanalyzer\2012-02-14\2012-02-14_003.xad

Created: 2/14/2012 2:17:44 PM
 Modified: 2/14/2012 2:48:34 PM

Electropherogram Summary Continued ...



Overall Results for sample 5 : NP20-8

RNA Area:	454.4	RNA Integrity Number (RIN):	2.4 (B.02.08, Anomaly Threshold(s) manually adapted)
RNA Concentration:	346 ng/μl	Result Flagging Color:	
rRNA Ratio [28s / 18s]:	0.0	Result Flagging Label:	RIN: 2.40

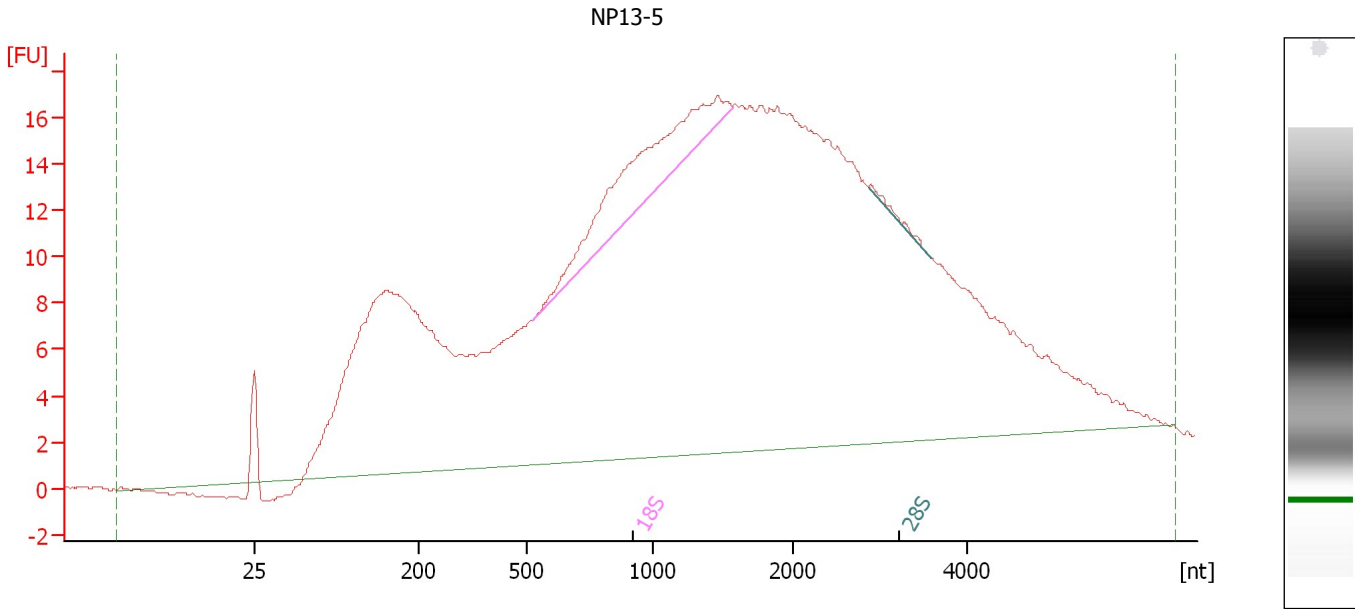
Fragment table for sample 5 : NP20-8

Name	Start Size [nt]	End Size [nt]	Area	% of total Area
18S	1,099	1,202	0.1	0.0

Assay Class: Eukaryote Total RNA Nano
 Data Path: C:\...ents and Settings\Bioanalyzer\2012-02-14\2012-02-14_003.xad

Created: 2/14/2012 2:17:44 PM
 Modified: 2/14/2012 2:48:34 PM

Electropherogram Summary Continued ...



Setpoint Deviations for sample 6 : NP13-5

Width Threshold [s] : 0.01

Overall Results for sample 6 : NP13-5

RNA Area:	701.8	Result Flagging Color:	
RNA Concentration:	534 ng/μl	Result Flagging Label:	RIN N/A
rRNA Ratio [28s / 18s]:	0.0		

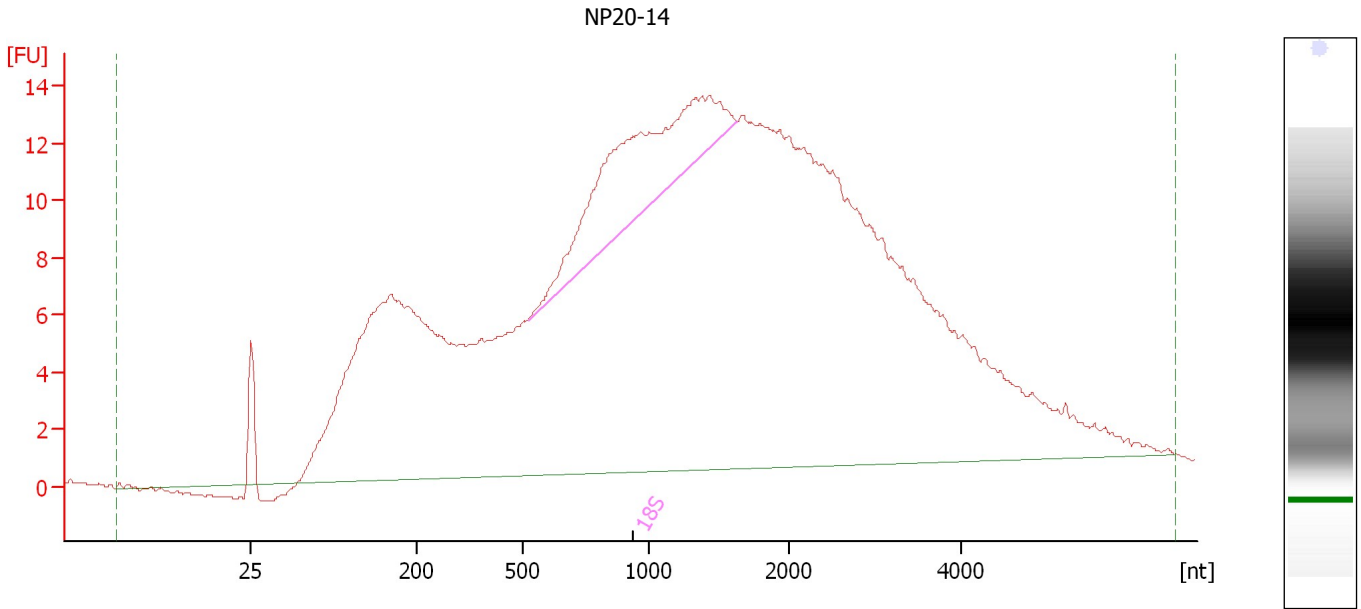
Fragment table for sample 6 : NP13-5

Name	Start Size [nt]	End Size [nt]	Area	% of total Area
18S	527	1,569	29.3	4.2
28S	2,872	3,584	1.0	0.1

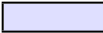
Assay Class: Eukaryote Total RNA Nano
Data Path: C:\...ents and Settings\Bioanalyzer\2012-02-14\2012-02-14_003.xad

Created: 2/14/2012 2:17:44 PM
Modified: 2/14/2012 2:48:34 PM

Electropherogram Summary Continued ...



Overall Results for sample 7 : NP20-14

RNA Area:	582.9	RNA Integrity Number (RIN):	3.2 (B.02.08, Anomaly Threshold(s) manually adapted)
RNA Concentration:	444 ng/μl	Result Flagging Color:	
rRNA Ratio [28s / 18s]:	0.0	Result Flagging Label:	RIN: 3.20

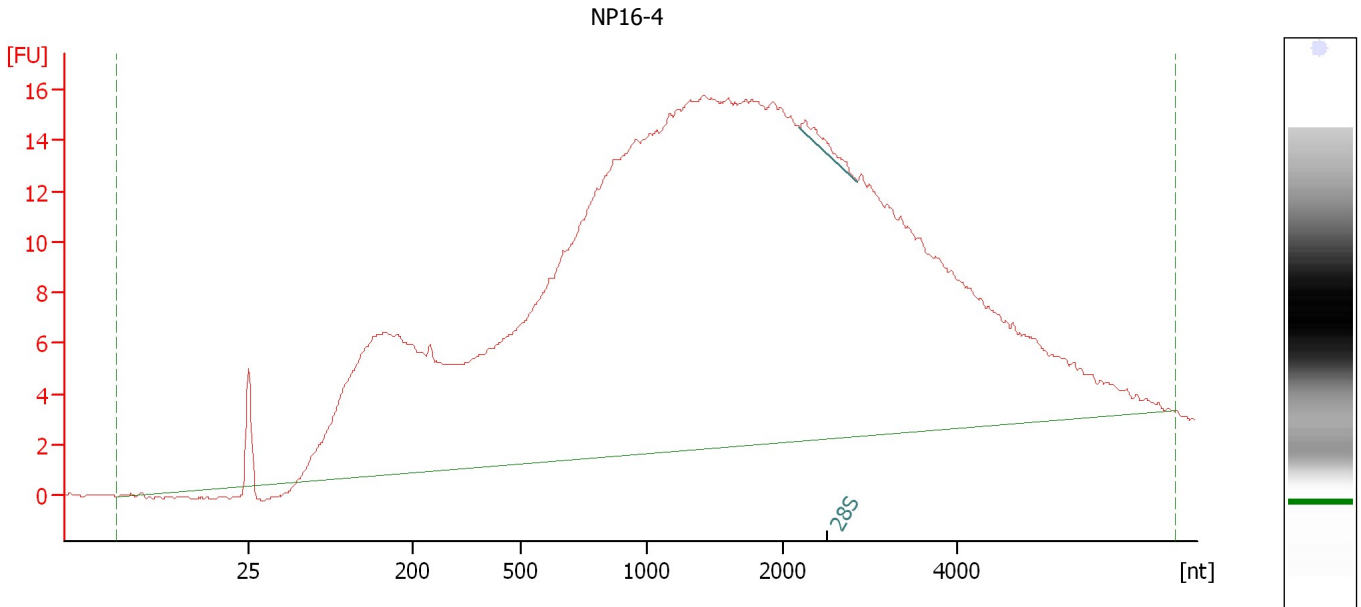
Fragment table for sample 7 : NP20-14

Name	Start Size [nt]	End Size [nt]	Area	% of total Area
18S	519	1,628	39.2	6.7

Assay Class: Eukaryote Total RNA Nano
 Data Path: C:\...ents and Settings\Bioanalyzer\2012-02-14\2012-02-14_003.xad

Created: 2/14/2012 2:17:44 PM
 Modified: 2/14/2012 2:48:34 PM

Electropherogram Summary Continued ...



Overall Results for sample 8 : NP16-4

RNA Area:	629.2	RNA Integrity Number (RIN):	2.2 (B.02.08, Anomaly Threshold(s) manually adapted)
RNA Concentration:	479 ng/μl	Result Flagging Color:	
rRNA Ratio [28s / 18s]:	0.0	Result Flagging Label:	RIN: 2.20

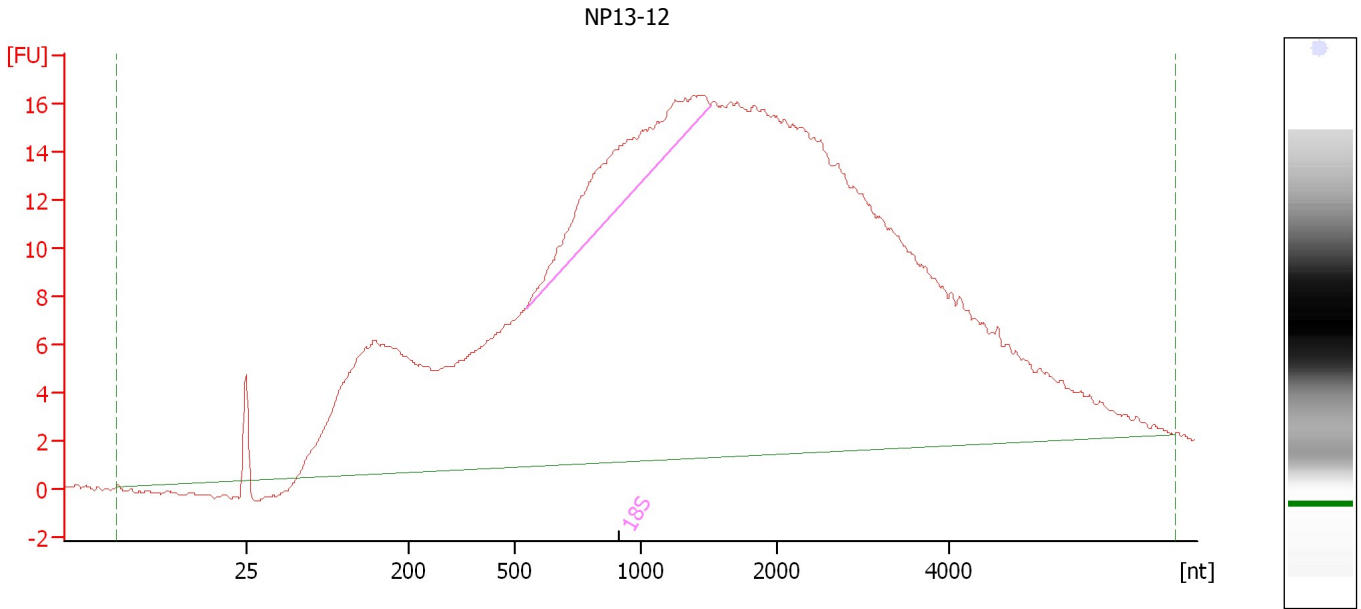
Fragment table for sample 8 : NP16-4

Name	Start Size [nt]	End Size [nt]	Area	% of total Area
28S	2,185	2,853	1.6	0.2

Assay Class: Eukaryote Total RNA Nano
 Data Path: C:\...ents and Settings\Bioanalyzer\2012-02-14\2012-02-14_003.xad

Created: 2/14/2012 2:17:44 PM
 Modified: 2/14/2012 2:48:34 PM

Electropherogram Summary Continued ...



Overall Results for sample 9 : NP13-12

RNA Area:	671.9	RNA Integrity Number (RIN):	2.9 (B.02.08, Anomaly Threshold(s) manually adapted)
RNA Concentration:	512 ng/μl	Result Flagging Color:	
rRNA Ratio [28s / 18s]:	0.0	Result Flagging Label:	RIN: 2.90

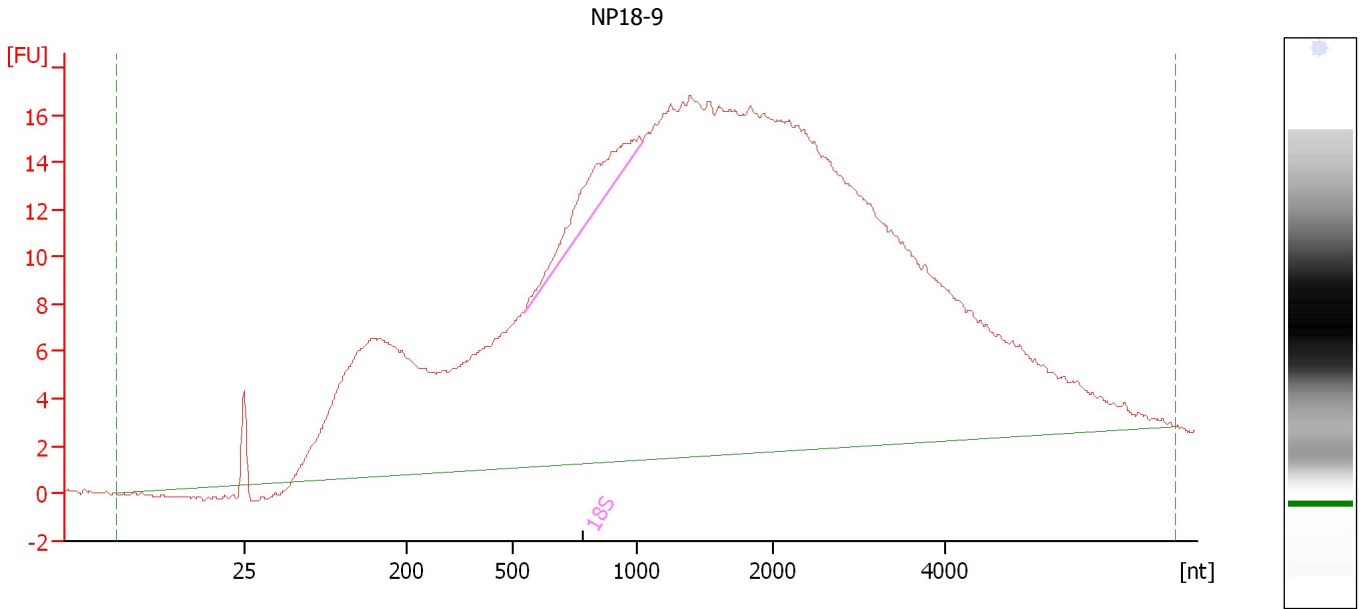
Fragment table for sample 9 : NP13-12

Name	Start Size [nt]	End Size [nt]	Area	% of total Area
18S	542	1,506	30.6	4.6

Assay Class: Eukaryote Total RNA Nano
 Data Path: C:\...ents and Settings\Bioanalyzer\2012-02-14\2012-02-14_003.xad

Created: 2/14/2012 2:17:44 PM
 Modified: 2/14/2012 2:48:34 PM

Electropherogram Summary Continued ...



Overall Results for sample 10 : NP18-9

RNA Area:	684.9	RNA Integrity Number (RIN):	2.7 (B.02.08, Anomaly Threshold(s) manually adapted)
RNA Concentration:	522 ng/μl	Result Flagging Color:	
rRNA Ratio [28s / 18s]:	0.0	Result Flagging Label:	RIN: 2.70

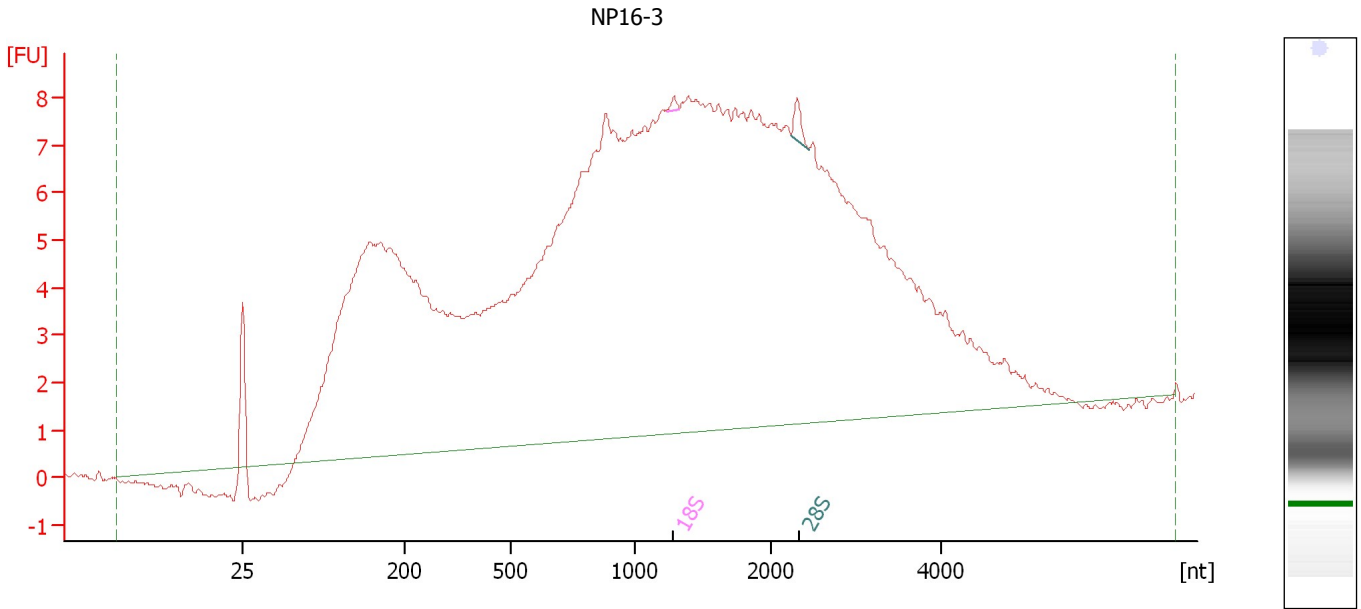
Fragment table for sample 10 : NP18-9

Name	Start Size [nt]	End Size [nt]	Area	% of total Area
18S	546	1,041	12.5	1.8

Assay Class: Eukaryote Total RNA Nano
 Data Path: C:\...ents and Settings\Bioanalyzer\2012-02-14\2012-02-14_003.xad

Created: 2/14/2012 2:17:44 PM
 Modified: 2/14/2012 2:48:34 PM

Electropherogram Summary Continued ...



Setpoint Deviations for sample 11 : NP16-3

Width Threshold [s] : 0.01

Overall Results for sample 11 : NP16-3

RNA Area:	330.5	RNA Integrity Number (RIN):	2.3 (B.02.08, Anomaly Threshold(s) manually adapted)
RNA Concentration:	252 ng/μl	Result Flagging Color:	
rRNA Ratio [28s / 18s]:	4.0	Result Flagging Label:	RIN: 2.30

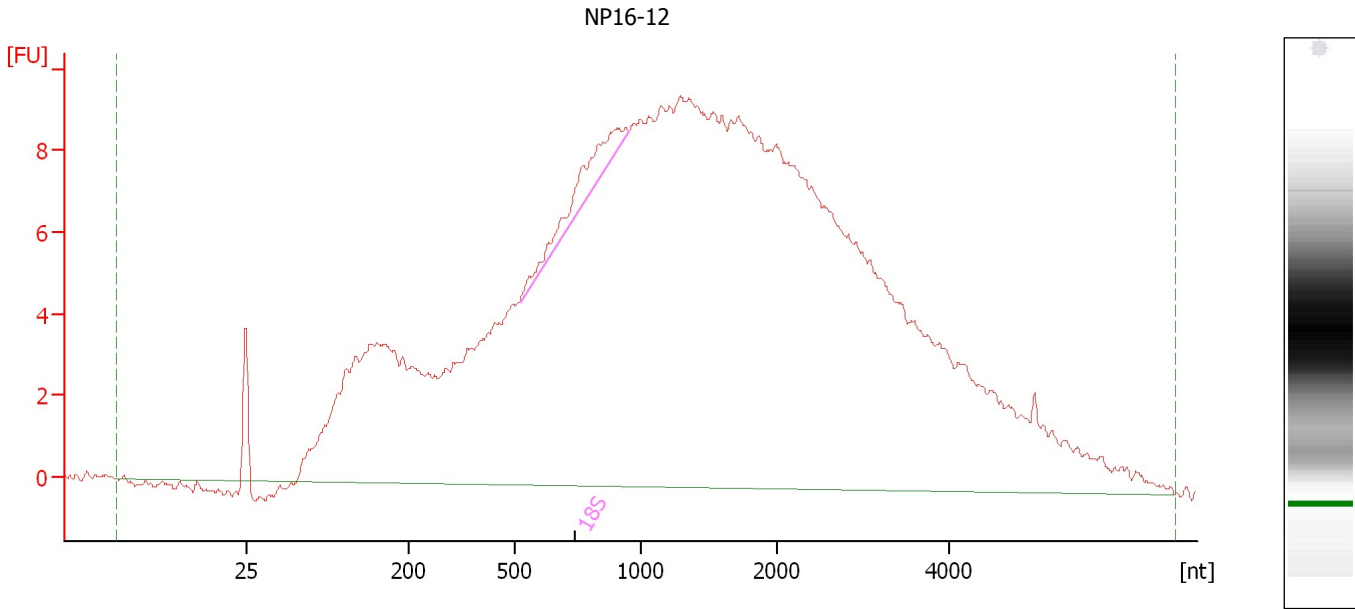
Fragment table for sample 11 : NP16-3

Name	Start Size [nt]	End Size [nt]	Area	% of total Area
18S	1,228	1,322	0.2	0.0
28S	2,222	2,435	0.7	0.2

Assay Class: Eukaryote Total RNA Nano
Data Path: C:\...ents and Settings\Bioanalyzer\2012-02-14\2012-02-14_003.xad

Created: 2/14/2012 2:17:44 PM
Modified: 2/14/2012 2:48:34 PM

Electropherogram Summary Continued ...



Setpoint Deviations for sample 12 : NP16-12

Width Threshold [s] : 0.01

Overall Results for sample 12 : NP16-12

RNA Area: 417.3 Result Flagging Color:
RNA Concentration: 318 ng/ μ l Result Flagging Label: RIN N/A
rRNA Ratio [28s / 18s]: 0.0

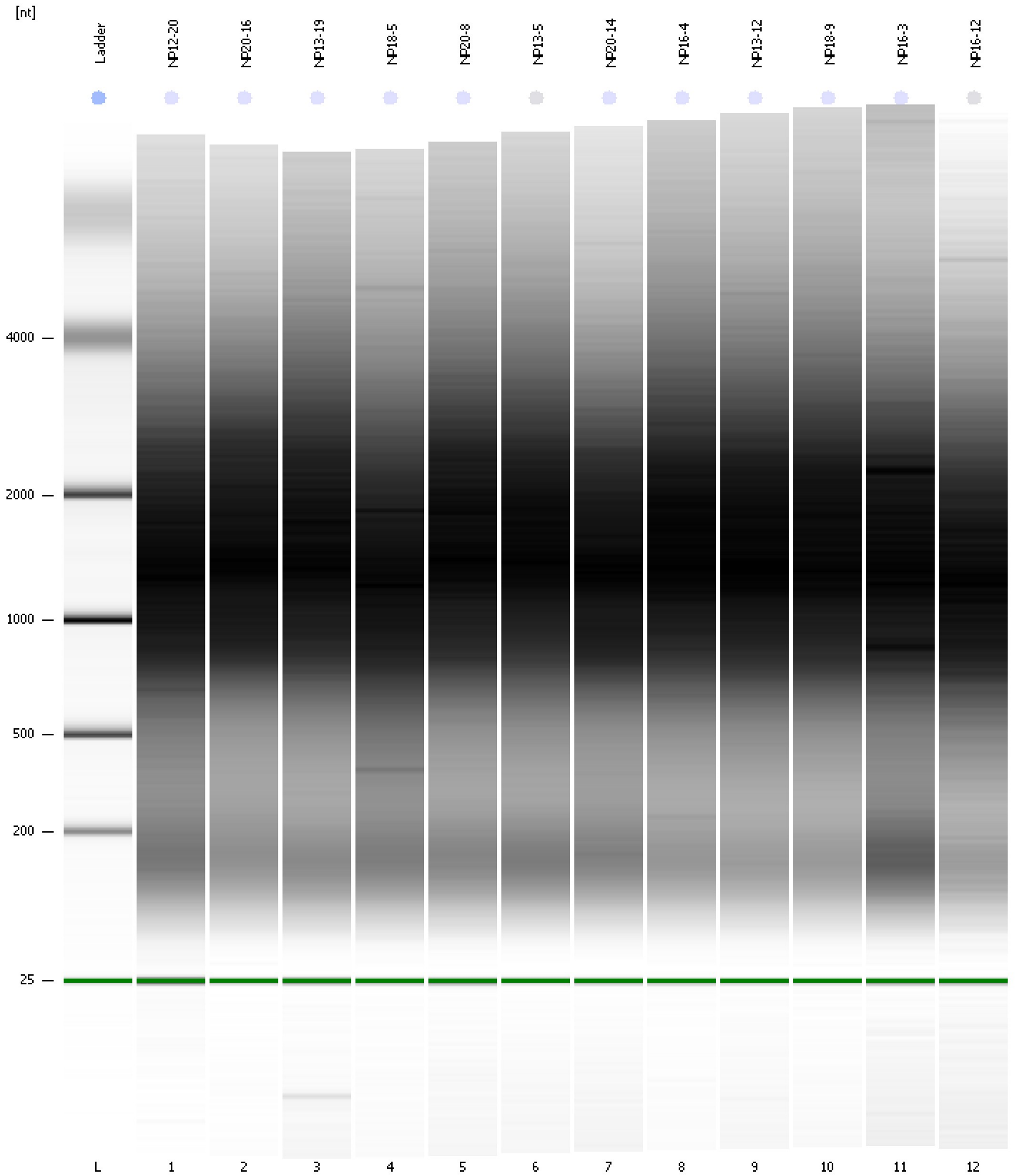
Fragment table for sample 12 : NP16-12

Name	Start Size [nt]	End Size [nt]	Area	% of total Area
18S	516	952	5.5	1.3

Assay Class: Eukaryote Total RNA Nano
Data Path: C:\...ents and Settings\Bioanalyzer\2012-02-14\2012-02-14_003.xad

Created: 2/14/2012 2:17:44 PM
Modified: 2/14/2012 2:48:34 PM

Gel Image



Assay Class: Eukaryote Total RNA Nano
 Data Path: C:\...ents and Settings\Bioanalyzer\2012-02-14\2012-02-14_003.xad

Created: 2/14/2012 2:17:44 PM
 Modified: 2/14/2012 2:48:34 PM

Run Logbook

Description	Number	Source	Category	Sub Category	Time	Time Zone	User	Host
Run ended on port 1 (Number of wells acquired: 13)		Instrument	Run		2/14/2012 2:41:34 PM	(GMT --08:00) Pacific Standard Time	UC Davis	D8XSMGH1
Run started on port 1 (File: C:\Documents and Settings\Bioanalyzer\2012-02-14\2012-02-14_003.xad)		Instrument	Run		2/14/2012 2:17:50 PM	(GMT --08:00) Pacific Standard Time	UC Davis	D8XSMGH1
Product Number : G2938B		Instrument	Run		2/14/2012 2:17:50 PM	(GMT --08:00) Pacific Standard Time	UC Davis	D8XSMGH1
Name :		Instrument	Run		2/14/2012 2:17:50 PM	(GMT --08:00) Pacific Standard Time	UC Davis	D8XSMGH1
Vendor : Agilent Technologies		Instrument	Run		2/14/2012 2:17:50 PM	(GMT --08:00) Pacific Standard Time	UC Davis	D8XSMGH1
Serial# : DE13701086		Instrument	Run		2/14/2012 2:17:50 PM	(GMT --08:00) Pacific Standard Time	UC Davis	D8XSMGH1
Firmware : C.01.069		Instrument	Run		2/14/2012 2:17:50 PM	(GMT --08:00) Pacific Standard Time	UC Davis	D8XSMGH1
Cartridge : Electrode		Instrument	Run		2/14/2012 2:17:50 PM	(GMT --08:00) Pacific Standard Time	UC Davis	D8XSMGH1