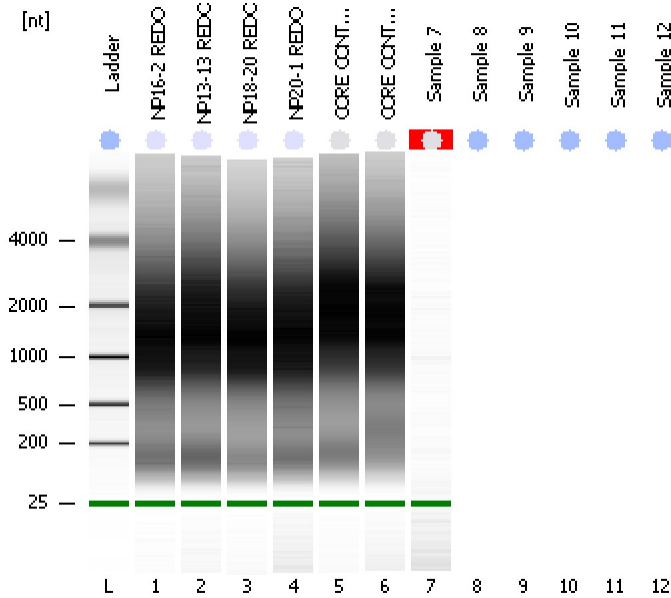


Assay Class: Eukaryote Total RNA Nano  
Data Path: C:\...ents and Settings\Bioanalyzer\2012-02-14\2012-02-14\_004.xad

Created: 2/14/2012 3:06:44 PM  
Modified: 2/14/2012 3:23:17 PM

Electrophoresis File Run Summary



Instrument Information:

Instrument Name: DE13701086      Firmware: C.01.069  
Serial#: DE13701086      Type: G2938B

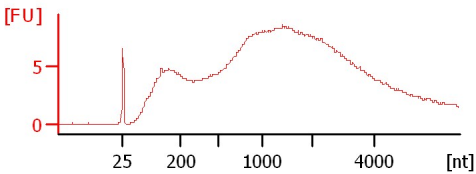
Assay Information:

Assay Origin Path: C:\Program Files\Agilent\2100 bioanalyzer\2100 expert\assays\RNA\Eukaryote Total RNA Nano Series II.xsy  
Assay Class: Eukaryote Total RNA Nano  
Version: 2.6  
Assay Comments: Total RNA Analysis ng sensitivity (Eukaryote)  
© Copyright 2003 - 2009 Agilent Technologies, Inc.

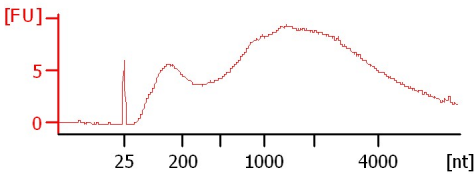
Chip Information:

Chip Lot #:   
Reagent Kit Lot #:   
Chip Comments:

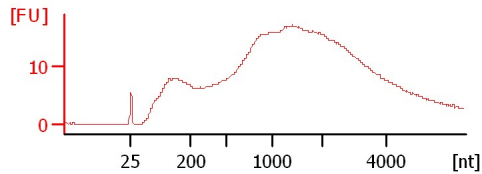
**NP16-2 REDO**  
RIN: 2.80



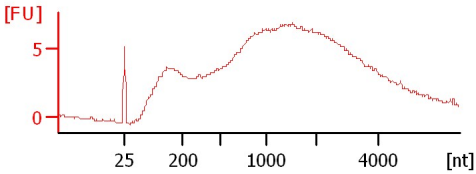
**NP13-13 REDO**  
RIN: 2.30



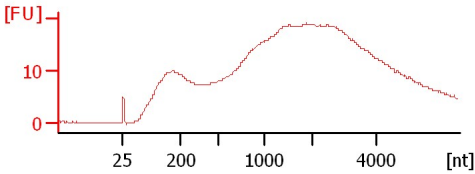
**NP18-20 REDO**  
RIN: 3.90



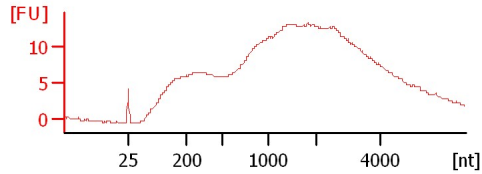
**NP20-1 REDO**  
RIN: 1.80



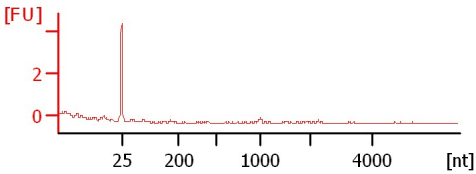
**CORE CONTROL**  
RIN N/A



**CORE CONTROL FOR CHIP7/8**  
RIN N/A



**Sample 7**  
RIN N/A



Assay Class: Eukaryote Total RNA Nano  
 Data Path: C:\...ents and Settings\Bioanalyzer\2012-02-14\2012-02-14\_004.xad

Created: 2/14/2012 3:06:44 PM  
 Modified: 2/14/2012 3:23:17 PM

**Electrophoresis File Run Summary (Chip Summary)**

Sample Name	Sample Comment	Status	Result Label	Result Color
NP16-2 REDO		✓	RIN: 2.80	
NP13-13 REDO		✓	RIN: 2.30	
NP18-20 REDO		✓	RIN: 3.90	
NP20-1 REDO		✓	RIN: 1.80	
CORE CONTROL		✓	RIN N/A	
CORE CONTROL FOR CHIP7/8		✓	RIN N/A	
Sample 7		✓	RIN N/A	
Sample 8		✗		
Sample 9		✗		
Sample 10		✗		
Sample 11		✗		
Sample 12		✗		
Ladder		✓	All Other Samples	

**Chip Lot #**

**Reagent Kit Lot #**

**Chip Comments :**

Assay Class: Eukaryote Total RNA Nano  
Data Path: C:\...ents and Settings\Bioanalyzer\2012-02-14\2012-02-14\_004.xad

Created: 2/14/2012 3:06:44 PM  
Modified: 2/14/2012 3:23:17 PM

## Electrophoresis Assay Details

### General Analysis Settings

Number of Available Sample and Ladder Wells (Max.) : 13  
Minimum Visible Range [s] : 17  
Maximum Visible Range [s] : 70  
Start Analysis Time Range [s] : 19  
End Analysis Time Range [s] : 69  
Ladder Concentration [ng/ $\mu$ l] : 150  
Lower Marker Concentration [ng/ $\mu$ l] : 0  
Upper Marker Concentration [ng/ $\mu$ l] : 0  
Used Lower Marker for Quantitation  
Standard Curve Fit is Logarithmic  
Show Data Aligned to Lower Marker

### Integrator Settings

Integration Start Time [s] : 19  
Integration End Time [s] : 69  
Slope Threshold : 0.6  
Height Threshold [FU] : 0.5  
Area Threshold : 0.2  
Width Threshold [s] : 0.01  
Baseline Plateau [s] : 6

### Filter Settings

Filter Width [s] : 0.5  
Polynomial Order : 4

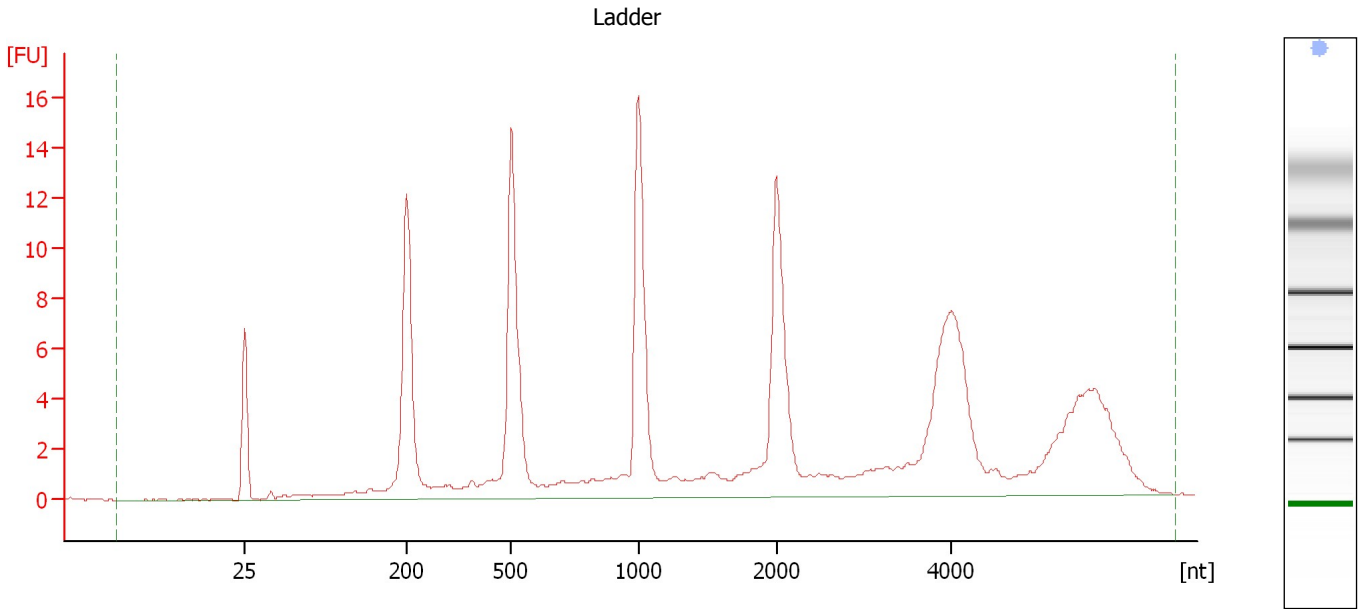
### Ladder

Ladder Peak	Size
1	25
2	200
3	500
4	1000
5	2000
6	4000

Assay Class: Eukaryote Total RNA Nano  
Data Path: C:\...ents and Settings\Bioanalyzer\2012-02-14\2012-02-14\_004.xad

Created: 2/14/2012 3:06:44 PM  
Modified: 2/14/2012 3:23:17 PM

**Electropherogram Summary**



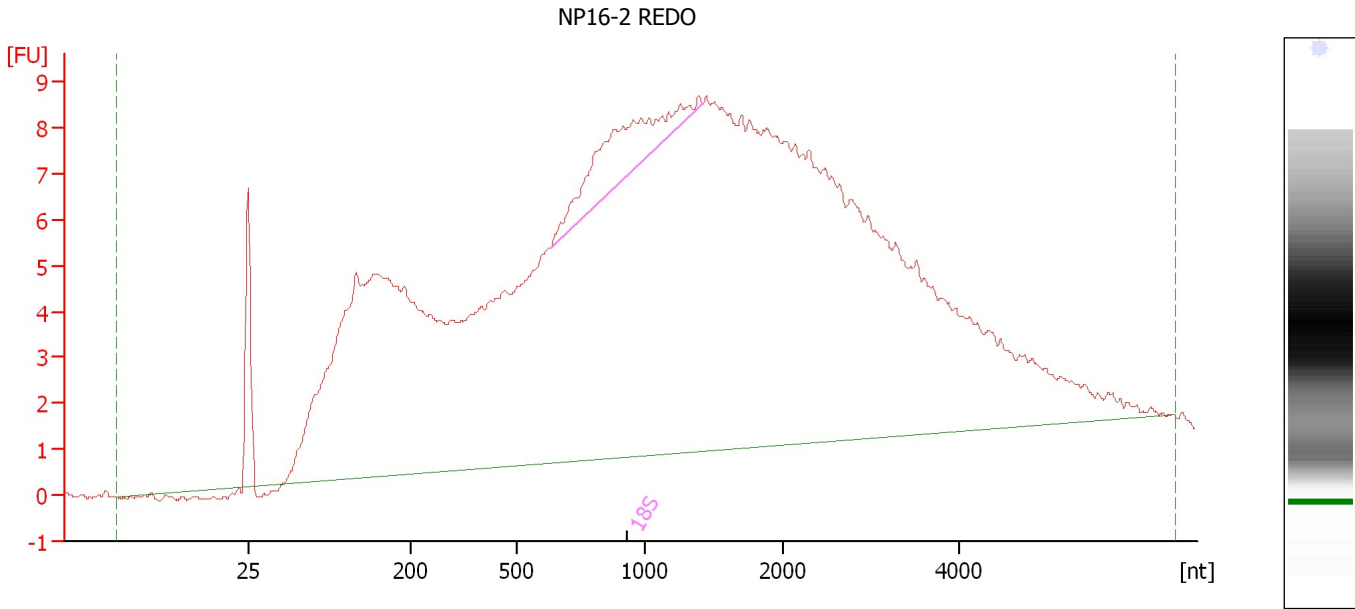
**Overall Results for Ladder**

RNA Area:	158.2	Result Flagging Color:	<span style="background-color: #ADD8E6; border: 1px solid black; display: inline-block; width: 20px; height: 10px;"></span>
RNA Concentration:	150 ng/μl	Result Flagging Label:	All Other Samples

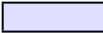
Assay Class: Eukaryote Total RNA Nano  
Data Path: C:\...ents and Settings\Bioanalyzer\2012-02-14\2012-02-14\_004.xad

Created: 2/14/2012 3:06:44 PM  
Modified: 2/14/2012 3:23:17 PM

**Electropherogram Summary Continued ...**



**Overall Results for sample 1 : NP16-2 REDO**

RNA Area:	375.7	RNA Integrity Number (RIN):	2.8 (B.02.08, Anomaly Threshold(s) manually adapted)
RNA Concentration:	356 ng/μl	Result Flagging Color:	
rRNA Ratio [28s / 18s]:	0.0	Result Flagging Label:	RIN: 2.80

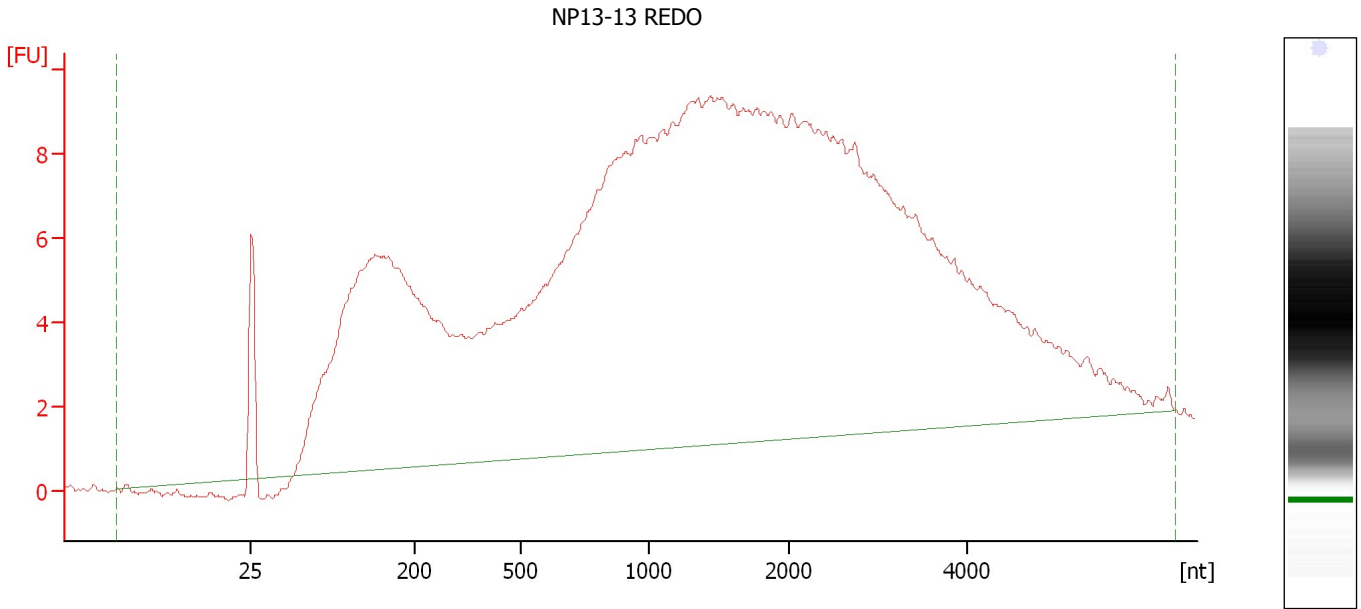
**Fragment table for sample 1 : NP16-2 REDO**

Name	Start Size [nt]	End Size [nt]	Area	% of total Area
18S	635	1,430	11.2	3.0

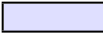
Assay Class: Eukaryote Total RNA Nano  
Data Path: C:\...ents and Settings\Bioanalyzer\2012-02-14\2012-02-14\_004.xad

Created: 2/14/2012 3:06:44 PM  
Modified: 2/14/2012 3:23:17 PM

**Electropherogram Summary Continued ...**



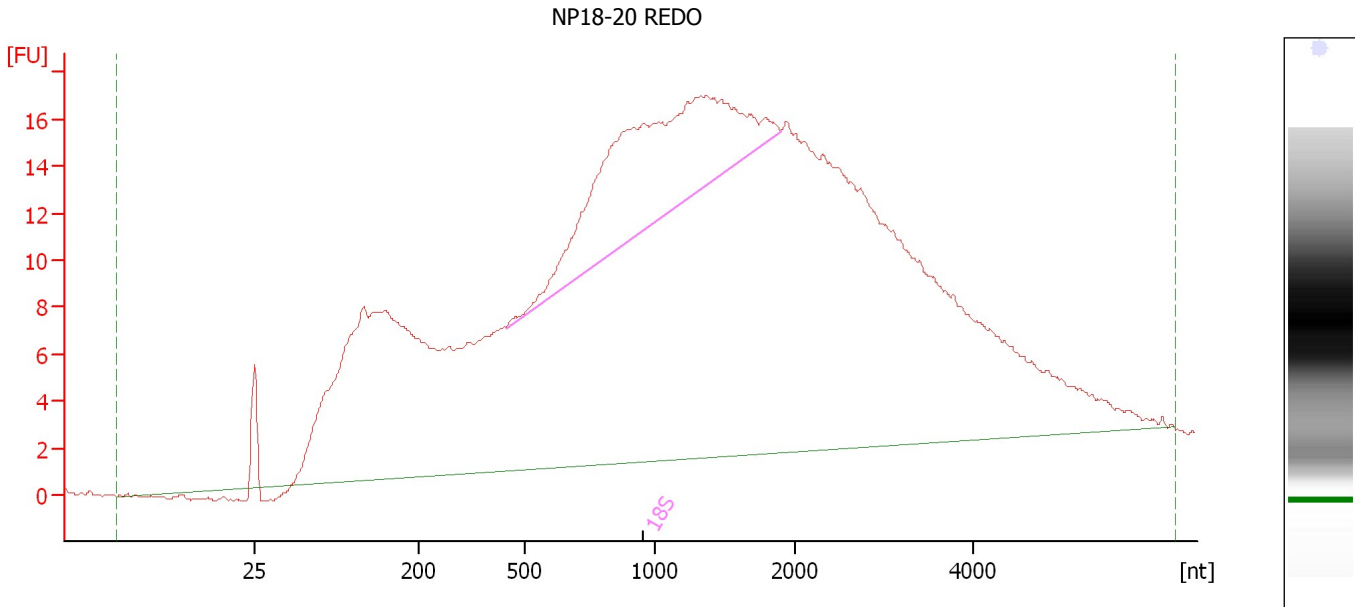
**Overall Results for sample 2 : NP13-13 REDO**

RNA Area:	410.8	RNA Integrity Number (RIN):	2.3 (B.02.08, Anomaly Threshold(s) manually adapted)
RNA Concentration:	390 ng/μl		
rRNA Ratio [28s / 18s]:	0.0	Result Flagging Color:	
		Result Flagging Label:	RIN: 2.30

Assay Class: Eukaryote Total RNA Nano  
 Data Path: C:\...ents and Settings\Bioanalyzer\2012-02-14\2012-02-14\_004.xad

Created: 2/14/2012 3:06:44 PM  
 Modified: 2/14/2012 3:23:17 PM

**Electropherogram Summary Continued ...**



**Overall Results for sample 3 : NP18-20 REDO**

RNA Area:	711.3	RNA Integrity Number (RIN):	3.9 (B.02.08, Anomaly Threshold(s) manually adapted)
RNA Concentration:	675 ng/μl	Result Flagging Color:	<span style="background-color: #ccccff; border: 1px solid black; display: inline-block; width: 20px; height: 10px;"></span>
rRNA Ratio [28s / 18s]:	0.0	Result Flagging Label:	RIN: 3.90

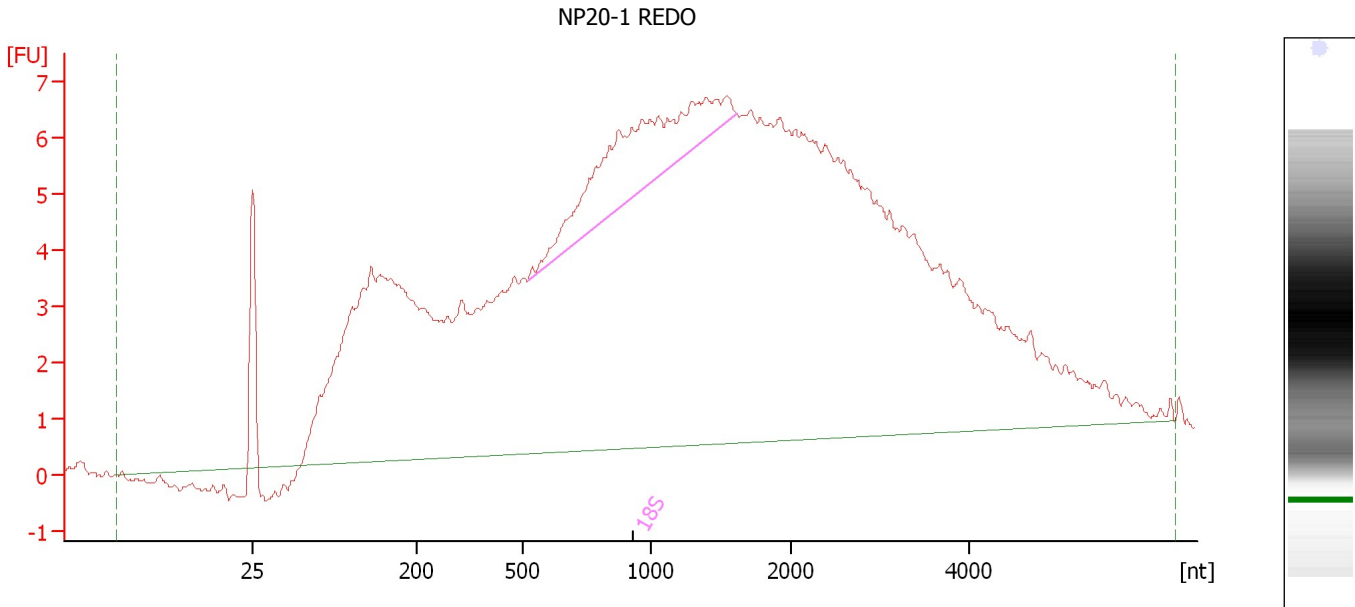
**Fragment table for sample 3 : NP18-20 REDO**

Name	Start Size [nt]	End Size [nt]	Area	% of total Area
18S	444	1,895	73.8	10.4

Assay Class: Eukaryote Total RNA Nano  
 Data Path: C:\...ents and Settings\Bioanalyzer\2012-02-14\2012-02-14\_004.xad

Created: 2/14/2012 3:06:44 PM  
 Modified: 2/14/2012 3:23:17 PM

**Electropherogram Summary Continued ...**



**Overall Results for sample 4 : NP20-1 REDO**

RNA Area:	301.0	RNA Integrity Number (RIN):	1.8 (B.02.08, Anomaly Threshold(s) manually adapted)
RNA Concentration:	285 ng/μl	Result Flagging Color:	<span style="background-color: #ccccff; border: 1px solid black; display: inline-block; width: 20px; height: 10px;"></span>
rRNA Ratio [28s / 18s]:	0.0	Result Flagging Label:	RIN: 1.80

**Fragment table for sample 4 : NP20-1 REDO**

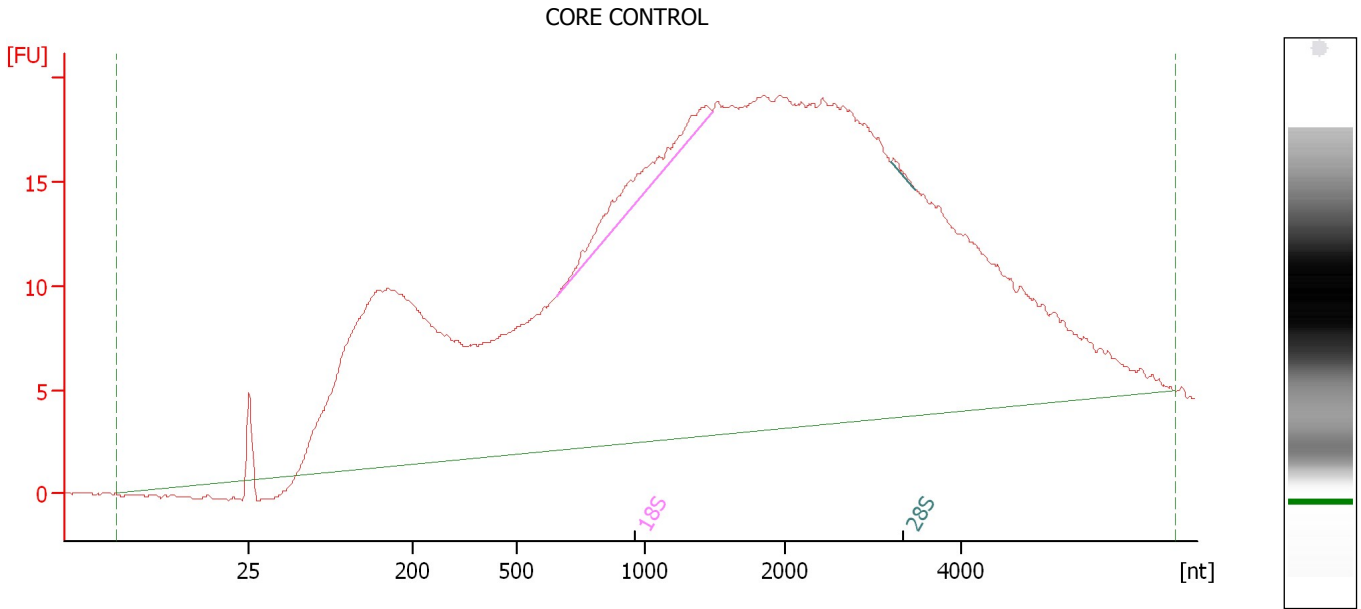
Name	Start Size [nt]	End Size [nt]	Area	% of total Area
18S	523	1,611	16.2	5.4



Assay Class: Eukaryote Total RNA Nano  
Data Path: C:\...ents and Settings\Bioanalyzer\2012-02-14\2012-02-14\_004.xad

Created: 2/14/2012 3:06:44 PM  
Modified: 2/14/2012 3:23:17 PM

**Electropherogram Summary Continued ...**



**Overall Results for sample 5 : CORE CONTROL**

RNA Area: 787.1 Result Flagging Color:   
RNA Concentration: 746 ng/μl Result Flagging Label: RIN N/A  
rRNA Ratio [28s / 18s]: 0.0

**Fragment table for sample 5 : CORE CONTROL**

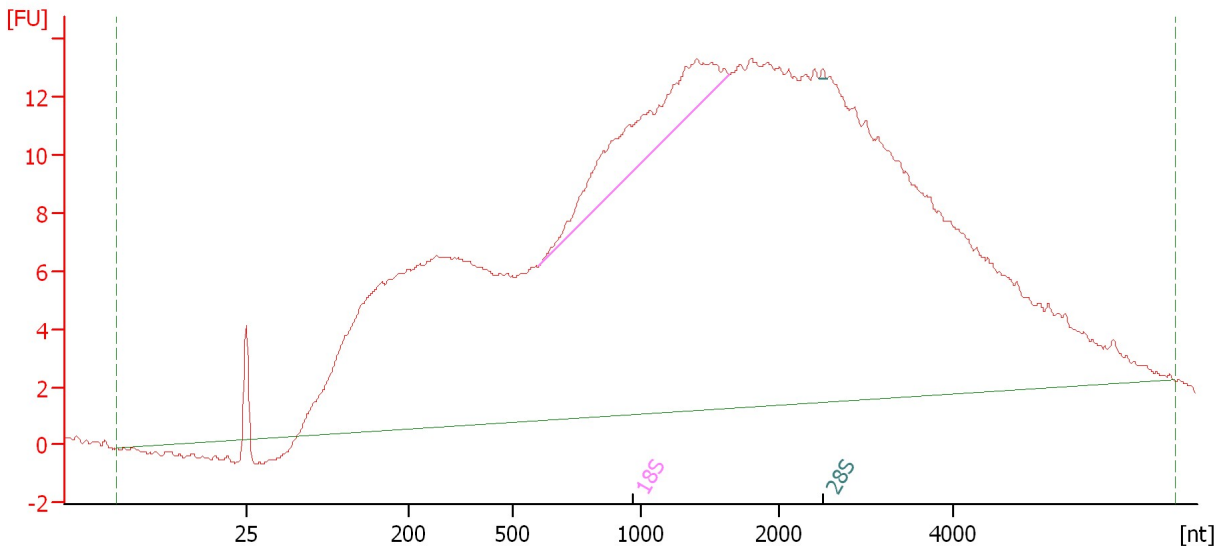
Name	Start Size [nt]	End Size [nt]	Area	% of total Area
18S	654	1,477	13.0	1.7
28S	3,211	3,465	0.4	0.0

Assay Class: Eukaryote Total RNA Nano  
Data Path: C:\...ents and Settings\Bioanalyzer\2012-02-14\2012-02-14\_004.xad

Created: 2/14/2012 3:06:44 PM  
Modified: 2/14/2012 3:23:17 PM

**Electropherogram Summary Continued ...**

CORE CONTROL FOR CHIP7/8



**Overall Results for sample 6 : CORE CONTROL FOR CHIP7/8**

RNA Area: 580.6      Result Flagging Color:   
RNA Concentration: 551 ng/μl      Result Flagging Label: RIN N/A  
rRNA Ratio [28s / 18s]: 0.0

**Fragment table for sample 6 : CORE CONTROL FOR CHIP7/8**

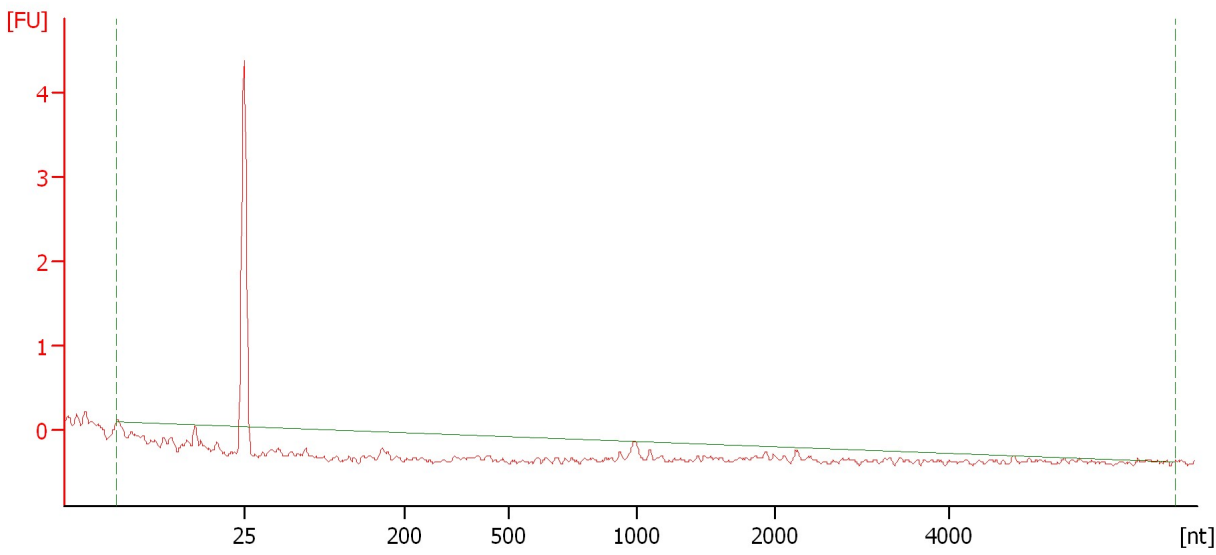
Name	Start Size [nt]	End Size [nt]	Area	% of total Area
18S	602	1,644	23.2	4.0
28S	2,462	2,560	0.1	0.0

Assay Class: Eukaryote Total RNA Nano  
Data Path: C:\...ents and Settings\Bioanalyzer\2012-02-14\2012-02-14\_004.xad


Created: 2/14/2012 3:06:44 PM  
Modified: 2/14/2012 3:23:17 PM

**Electropherogram Summary Continued ...**

Sample 7



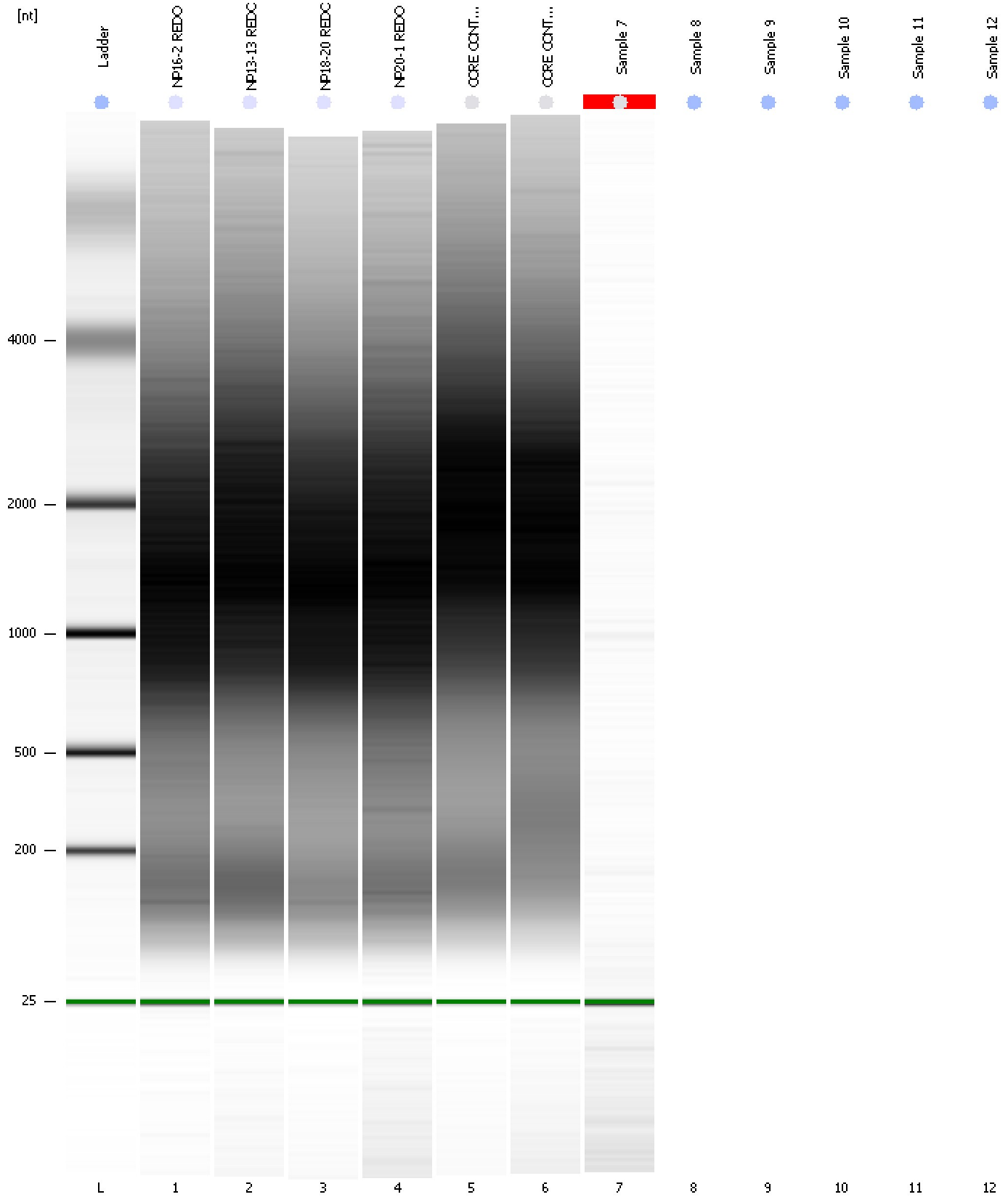
**Overall Results for sample 7 : Sample 7**

RNA Area:	0.0	RNA Integrity Number (RIN):	N/A (B.02.08, Anomaly Threshold(s) manually adapted)
RNA Concentration:	0 ng/μl	Result Flagging Color:	
rRNA Ratio [28s / 18s]:	0.0	Result Flagging Label:	RIN N/A

Assay Class: Eukaryote Total RNA Nano  
Data Path: C:\...ents and Settings\Bioanalyzer\2012-02-14\2012-02-14\_004.xad

Created: 2/14/2012 3:06:44 PM  
Modified: 2/14/2012 3:23:17 PM

**Gel Image**



Assay Class: Eukaryote Total RNA Nano  
Data Path: C:\...ents and Settings\Bioanalyzer\2012-02-14\2012-02-14\_004.xad

Created: 2/14/2012 3:06:44 PM  
Modified: 2/14/2012 3:23:17 PM

**Invalid Samples**

Sample 8 has not been run, no results available.

Sample 9 has not been run, no results available.

Sample 10 has not been run, no results available.

Sample 11 has not been run, no results available.

Sample 12 has not been run, no results available.

Assay Class: Eukaryote Total RNA Nano  
 Data Path: C:\...ents and Settings\Bioanalyzer\2012-02-14\2012-02-14\_004.xad

Created: 2/14/2012 3:06:44 PM  
 Modified: 2/14/2012 3:23:17 PM

**Run Logbook**

Description	Number	Source	Category	Sub Category	Time	Time Zone	User	Host
Run aborted on port 1		Instrument	Run		2/14/2012 3:23:15 PM	(GMT --08:00) Pacific Standard Time	UC Davis	D8XSMGH1
Run started on port 1 (File: C:\Documents and Settings\Bioanalyzer\2012-02-14\2012-02-14_004.xad)		Instrument	Run		2/14/2012 3:06:49 PM	(GMT --08:00) Pacific Standard Time	UC Davis	D8XSMGH1
Product Number : G2938B		Instrument	Run		2/14/2012 3:06:49 PM	(GMT --08:00) Pacific Standard Time	UC Davis	D8XSMGH1
Name :		Instrument	Run		2/14/2012 3:06:49 PM	(GMT --08:00) Pacific Standard Time	UC Davis	D8XSMGH1
Vendor : Agilent Technologies		Instrument	Run		2/14/2012 3:06:49 PM	(GMT --08:00) Pacific Standard Time	UC Davis	D8XSMGH1
Serial# : DE13701086		Instrument	Run		2/14/2012 3:06:49 PM	(GMT --08:00) Pacific Standard Time	UC Davis	D8XSMGH1
Firmware : C.01.069		Instrument	Run		2/14/2012 3:06:49 PM	(GMT --08:00) Pacific Standard Time	UC Davis	D8XSMGH1
Cartridge : Electrode		Instrument	Run		2/14/2012 3:06:49 PM	(GMT --08:00) Pacific Standard Time	UC Davis	D8XSMGH1