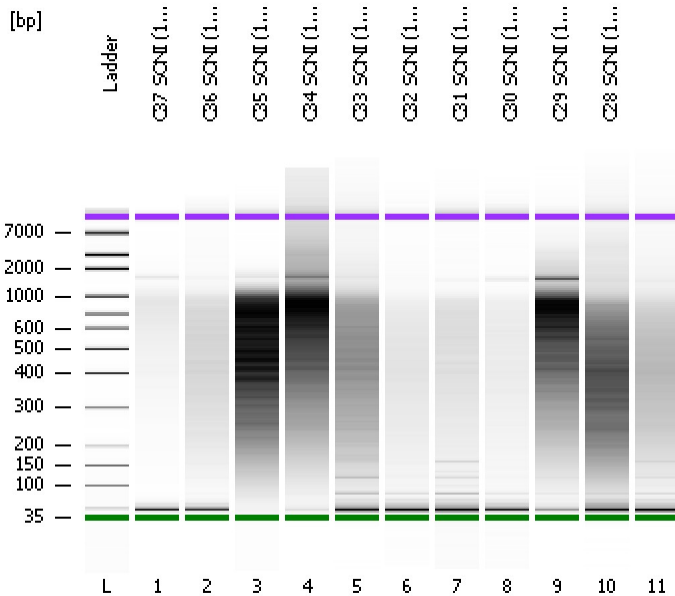


Assay Class: High Sensitivity DNA Assay
Data Path: C:\...t\2100 bioanalyzer\2100 expert\data\PDFs\2012-02-14_007.xad

Created: 2/14/2012 11:19:24 AM
Modified: 2/14/2012 12:20:01 PM

Electrophoresis File Run Summary



Instrument Information:

Instrument Name: DE13701086 Firmware: C.01.069
Serial#: DE13701086 Type: G2938B

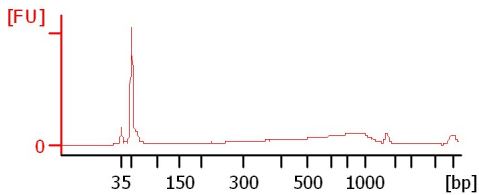
Assay Information:

Assay Origin Path: C:\Program Files\Agilent\2100 bioanalyzer\2100 expert\assays\dsDNA\High Sensitivity DNA.xsy
Assay Class: High Sensitivity DNA Assay
Version: 1.03
Assay Comments: Copyright © 2003-2010 Agilent Technologies

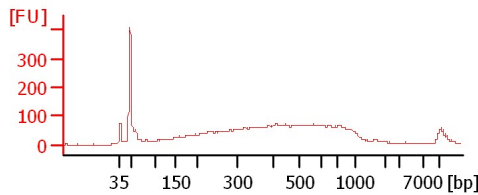
Chip Information:

Chip Lot #:
Reagent Kit Lot #:
Chip Comments:

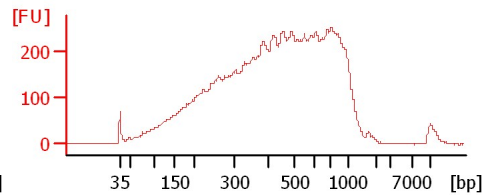
C37 SONI (15/90, 9CYCLES)



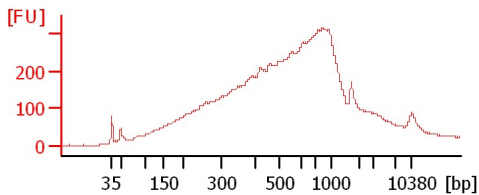
C36 SONI (15/90, 9CYCLES)



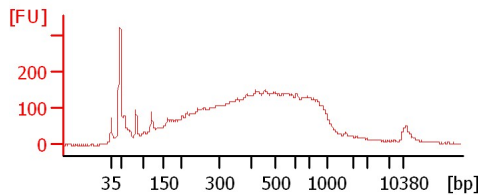
C35 SONI (15/90, 9CYCLES)



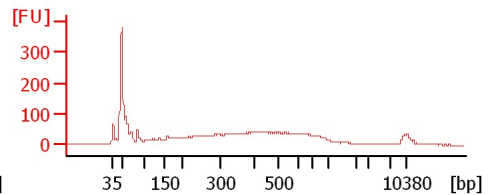
C34 SONI (15/90, 9CYCLES)



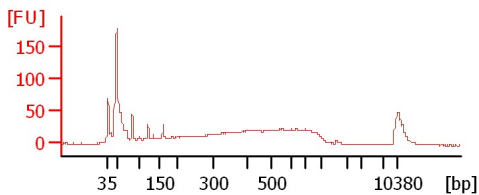
C33 SONI (15/90, 9CYCLES)



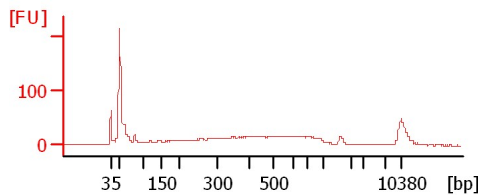
C32 SONI (15/90, 9CYCLES)



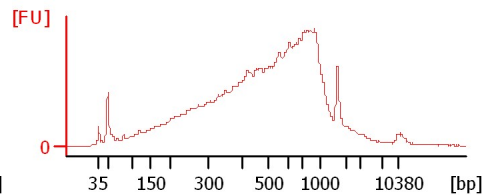
C31 SONI (15/90, 9CYCLES)



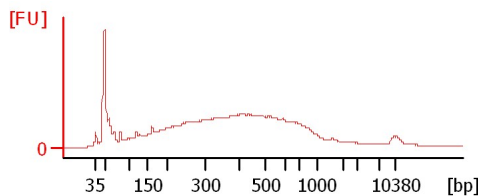
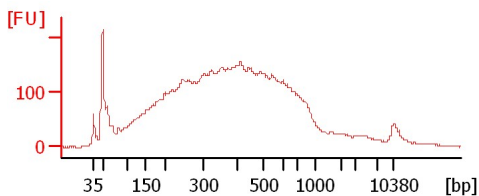
C30 SONI (15/90, 9CYCLES)



C29 SONI (15/90, 9CYCLES)



C28 SONI (15/90, 9CYCLES)



Assay Class: High Sensitivity DNA Assay
 Data Path: C:\...t\2100 bioanalyzer\2100 expert\data\PDFs\2012-02-14_007.xad

Created: 2/14/2012 11:19:24 AM
 Modified: 2/14/2012 12:20:01 PM

Electrophoresis File Run Summary (Chip Summary)

Sample Name	Sample Comment	Rest. Digest	Status	Observation	Result Label	Result Color
C37 SONI (15/90, 9CYCLES)		<input type="checkbox"/>	✓			
C36 SONI (15/90, 9CYCLES)		<input type="checkbox"/>	✓			
C35 SONI (15/90, 9CYCLES)		<input type="checkbox"/>	✓			
C34 SONI (15/90, 9CYCLES)		<input type="checkbox"/>	✓			
C33 SONI (15/90, 9CYCLES)		<input type="checkbox"/>	✓			
C32 SONI (15/90, 9CYCLES)		<input type="checkbox"/>	✓			
C31 SONI (15/90, 9CYCLES)		<input type="checkbox"/>	✓			
C30 SONI (15/90, 9CYCLES)		<input type="checkbox"/>	✓			
C29 SONI (15/90, 9CYCLES)		<input type="checkbox"/>	✓			
C28 SONI (15/90, 9CYCLES)		<input type="checkbox"/>	✓			
Ladder		<input type="checkbox"/>	✓			

Chip Lot #

Reagent Kit Lot #

Chip Comments :

Assay Class: High Sensitivity DNA Assay
Data Path: C:\...t\2100 bioanalyzer\2100 expert\data\PDFs\2012-02-14_007.xad

Created: 2/14/2012 11:19:24 AM
Modified: 2/14/2012 12:20:01 PM

Electrophoresis Assay Details

General Analysis Settings

Number of Available Sample and Ladder Wells (Max.) : 12
Minimum Visible Range [s] : 32
Maximum Visible Range [s] : 138
Start Analysis Time Range [s] : 33
End Analysis Time Range [s] : 137.5
Ladder Concentration [pg/μl] : 1950
Uses Standard Area for Ladder Fragments
Lower Marker Concentration [pg/μl] : 125
Upper Marker Concentration [pg/μl] : 75
Used Upper Marker for Quantitation
Standard Curve Fit is Point to Point
Show Data Aligned to Lower and Upper Marker

Integrator Settings

Integration Start Time [s] : 33.05
Integration End Time [s] : 137
Slope Threshold : 0.8
Height Threshold [FU] : 5
Area Threshold : 0.1
Width Threshold [s] : 0.6
Baseline Plateau [s] : 0.5

Filter Settings

Filter Width [s] : 0.5
Polynomial Order : 4

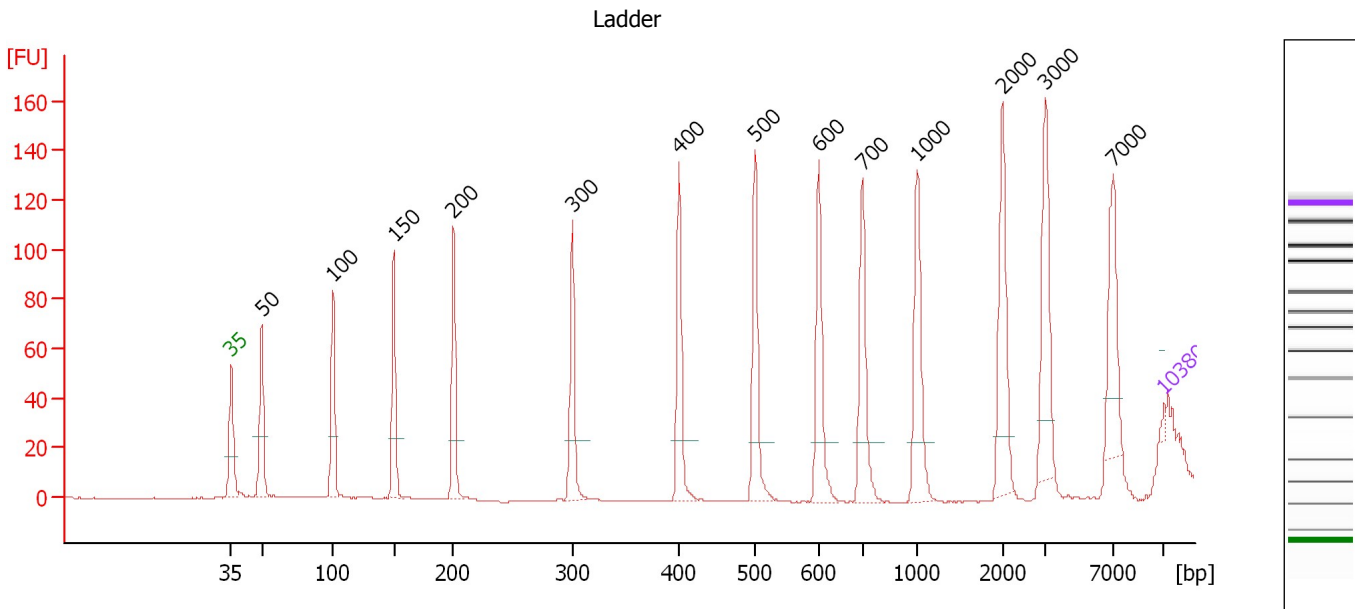
Ladder

Ladder Peak	Size	Area
1	35	160
2	50	210
3	100	208
4	150	221
5	200	242
6	300	270
7	400	305
8	500	306
9	600	336
10	700	321
11	1000	366
12	2000	413
13	3000	411
14	7000	400
15	10380	214

Assay Class: High Sensitivity DNA Assay
 Data Path: C:\...t\2100 bioanalyzer\2100 expert\data\PDFs\2012-02-14_007.xad

Created: 2/14/2012 11:19:24 AM
 Modified: 2/14/2012 12:20:01 PM

Electropherogram Summary



Overall Results for Ladder

Noise: 0.2

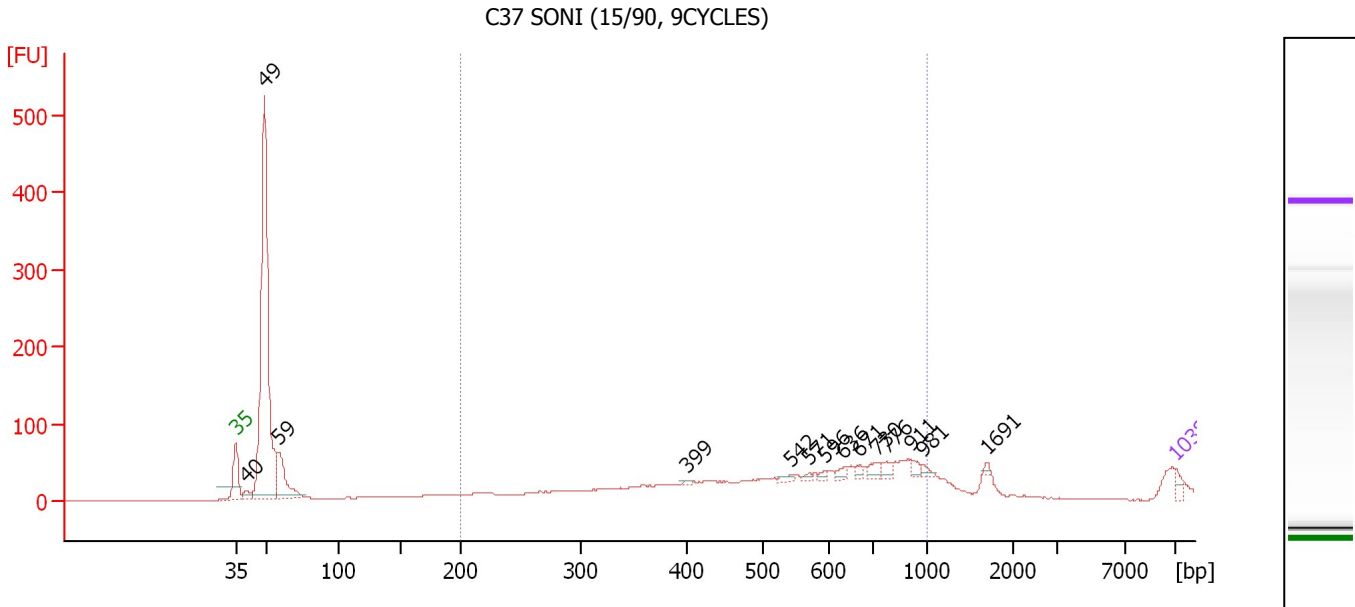
Peak table for Ladder

Peak	Size [bp]	Conc. [pg/μl]	Molarity [pmol/l]	Observations
1	35	125.00	5,411.3	Lower Marker
2	50	150.00	4,545.5	Ladder Peak
3	100	150.00	2,272.7	Ladder Peak
4	150	150.00	1,515.2	Ladder Peak
5	200	150.00	1,136.4	Ladder Peak
6	300	150.00	757.6	Ladder Peak
7	400	150.00	568.2	Ladder Peak
8	500	150.00	454.5	Ladder Peak
9	600	150.00	378.8	Ladder Peak
10	700	150.00	324.7	Ladder Peak
11	1,000	150.00	227.3	Ladder Peak
12	2,000	150.00	113.6	Ladder Peak
13	3,000	150.00	75.8	Ladder Peak
14	7,000	150.00	32.5	Ladder Peak
15	10,380	75.00	10.9	Upper Marker

Assay Class: High Sensitivity DNA Assay
 Data Path: C:\...\t\2100 bioanalyzer\2100 expert\data\PDFs\2012-02-14_007.xad

Created: 2/14/2012 11:19:24 AM
 Modified: 2/14/2012 12:20:01 PM

Electropherogram Summary Continued ...



Overall Results for sample 1 : C37 SONI (15/90, 9CYCLES)

Number of peaks found: 14 Corr. Area 1: 679.9
 Noise: 0.3

Peak table for sample 1 : C37 SONI (15/90, 9CYCLES)

Peak	Size [bp]	Conc. [pg/μl]	Molarity [pmol/l]	Observations
1	35	125.00	5,411.3	Lower Marker
2	40	155.11	5,842.6	
3	49	6,781.50	210,361.4	
4	59	903.44	23,306.7	
5	399	36.28	137.8	
6	542	63.03	176.2	
7	571	49.00	130.0	
8	596	55.25	140.5	
9	636	84.88	202.2	
10	671	74.36	167.9	
11	730	117.79	244.6	
12	776	120.53	235.2	
13	911	97.37	162.0	
14	981	62.44	96.4	
15	1,691	37.20	33.3	
16	10,380	75.00	10.9	Upper Marker

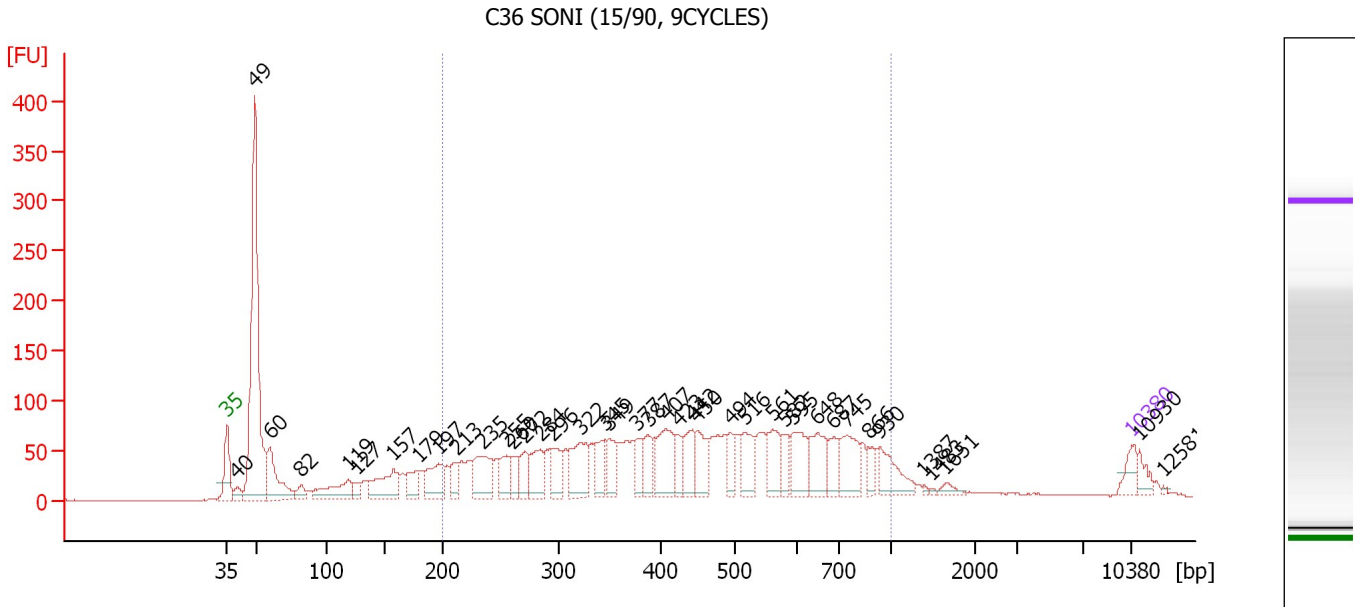
Region table for sample 1 : C37 SONI (15/90, 9CYCLES)

From [bp]	Molarity [pmol/l]	Average Size [bp]	Conc. [pg/μl]	To [bp]	Corr. Area	% of Total	Size distribution in CV [%]	Color
200	11,671.1	597	3,817.96	1,000	679.9	40	32.7	Blue

Assay Class: High Sensitivity DNA Assay
 Data Path: C:\...t\2100 bioanalyzer\2100 expert\data\PDFs\2012-02-14_007.xad

Created: 2/14/2012 11:19:24 AM
 Modified: 2/14/2012 12:20:01 PM

Electropherogram Summary Continued ...



Overall Results for sample 2 : C36 SONI (15/90, 9CYCLES)

Number of peaks found: 40 Corr. Area 1: 2,614.4
 Noise: 0.4

Peak table for sample 2 : C36 SONI (15/90, 9CYCLES)


Peak	Size [bp]	Conc. [pg/μl]	Molarity [pmol/l]	Observations
1	35	125.00	5,411.3	Lower Marker
2	40	70.15	2,646.7	
3	49	2,094.43	64,615.3	
4	60	413.10	10,449.2	
5	82	78.56	1,447.7	
6	119	284.12	3,620.6	
7	127	60.64	725.8	
8	157	329.13	3,166.6	
9	179	150.48	1,276.2	
10	197	257.73	1,986.2	
11	213	110.66	788.0	
12	235	332.15	2,145.9	
13	255	156.66	929.6	
14	260	116.34	676.9	
15	272	160.55	894.4	
16	284	228.17	1,215.3	
17	296	190.72	976.2	
18	322	325.09	1,527.9	
19	345	160.88	706.4	
20	349	179.22	777.6	
21	377	114.34	459.5	
22	387	156.17	610.9	
23	407	323.48	1,204.6	
24	423	104.91	375.9	
25	442	205.81	704.8	
26	450	196.57	662.3	

Assay Class: High Sensitivity DNA Assay
 Data Path: C:\...t\2100 bioanalyzer\2100 expert\data\PDFs\2012-02-14_007.xad


Created: 2/14/2012 11:19:24 AM
 Modified: 2/14/2012 12:20:01 PM

Electropherogram Summary Continued ...

... Peak table for sample 2 : C36 SONI (15/90, 9CYCLES)

Peak	Size [bp]	Conc. [pg/µl]	Molarity [pmol/l]	Observations
27	494	123.55	378.9	
28	516	193.44	567.9	
29	561	193.98	524.1	
30	582	106.63	277.4	
31	595	230.69	587.3	
32	648	227.68	532.1	
33	687	116.65	257.2	
34	745	237.23	482.4	
35	866	64.85	113.4	
36	930	191.93	312.6	
37	1,387	8.78	9.6	
38	1,483	6.35	6.5	
39	1,651	32.67	30.0	
40	 10,380	75.00	10.9	Upper Marker
41	10,930	0.00	0.0	
42	12,581	0.00	0.0	

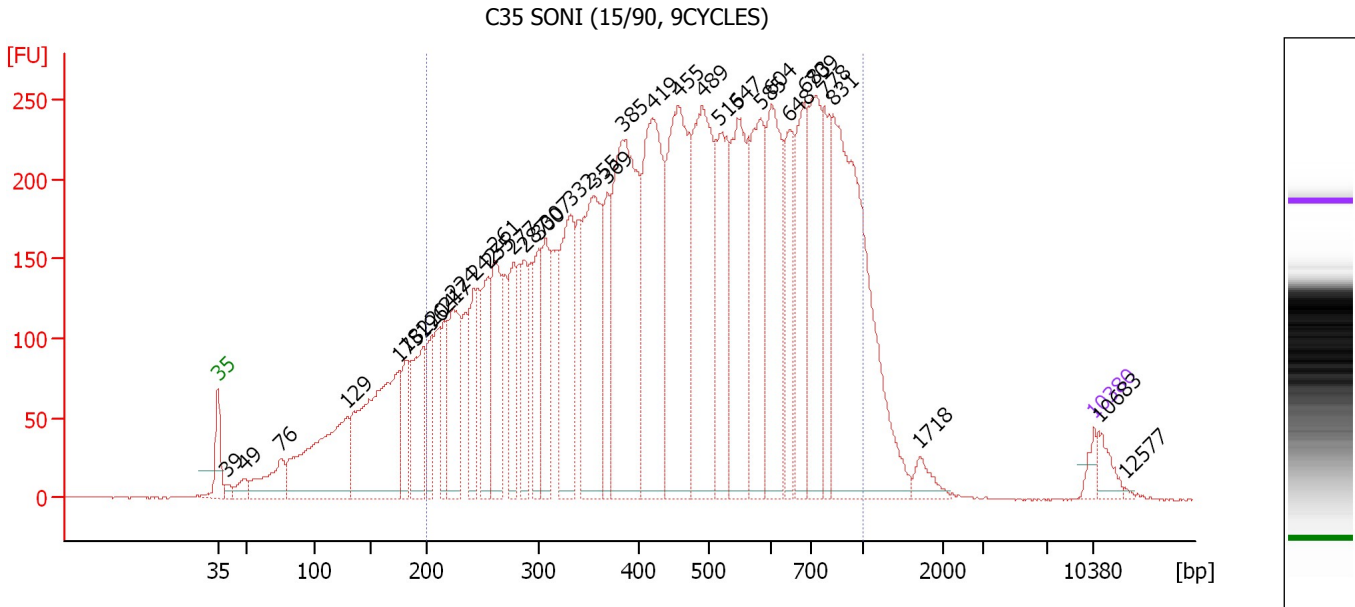
Region table for sample 2 : C36 SONI (15/90, 9CYCLES)

From [bp]	Molarity [pmol/l]	Average Size [bp]	Conc. [pg/µl]	To [bp]	Corr. Area	% of Total	Size distribution in CV [%]	Color
200	25,489.7	469	6,322.55	1,000	2,614.4	66	39.2	

Assay Class: High Sensitivity DNA Assay
 Data Path: C:\...t\2100 bioanalyzer\2100 expert\data\PDFs\2012-02-14_007.xad

Created: 2/14/2012 11:19:24 AM
 Modified: 2/14/2012 12:20:01 PM

Electropherogram Summary Continued ...



Overall Results for sample 3 : C35 SONI (15/90, 9CYCLES)

Number of peaks found: 36 Corr. Area 1: 9,096.1
 Noise: 0.4

Peak table for sample 3 : C35 SONI (15/90, 9CYCLES)


Peak	Size [bp]	Conc. [pg/μl]	Molarity [pmol/l]	Observations
1	35	125.00	5,411.3	Lower Marker
2	39	65.81	2,525.6	
3	49	129.27	4,019.6	
4	76	467.34	9,366.1	
5	129	1,622.24	19,021.9	
6	175	2,040.58	17,625.3	
7	182	404.70	3,376.6	
8	196	791.76	6,110.3	
9	204	381.11	2,824.7	
10	217	408.84	2,850.5	
11	224	878.49	5,954.9	
12	242	503.22	3,148.9	
13	255	635.25	3,781.2	
14	261	772.28	4,479.2	
15	277	565.64	3,088.8	
16	287	496.45	2,620.8	
17	300	568.17	2,865.6	
18	307	616.13	3,037.5	
19	332	1,160.92	5,292.5	
20	355	1,525.51	6,506.5	
21	369	483.52	1,987.8	
22	385	2,288.12	9,016.1	
23	419	1,829.41	6,608.7	
24	455	1,883.51	6,266.5	
25	489	1,809.35	5,604.6	
26	516	1,009.49	2,961.8	

Assay Class: High Sensitivity DNA Assay
 Data Path: C:\...t\2100 bioanalyzer\2100 expert\data\PDFs\2012-02-14_007.xad


Created: 2/14/2012 11:19:24 AM
 Modified: 2/14/2012 12:20:01 PM

Electropherogram Summary Continued ...

... Peak table for sample 3 : C35 SONI (15/90, 9CYCLES)

Peak	Size [bp]	Conc. [pg/µl]	Molarity [pmol/l]	Observations
27	547	1,230.95	3,412.2	
28	585	1,106.35	2,866.8	
29	604	1,167.99	2,931.8	
30	648	601.23	1,406.3	
31	683	807.69	1,792.3	
32	709	1,017.12	2,174.7	
33	778	540.92	1,054.1	
34	831	2,608.24	4,757.1	
35	1,718	114.36	100.9	
36	 10,380	75.00	10.9	Upper Marker
37	10,683	0.00	0.0	
38	12,577	0.00	0.0	

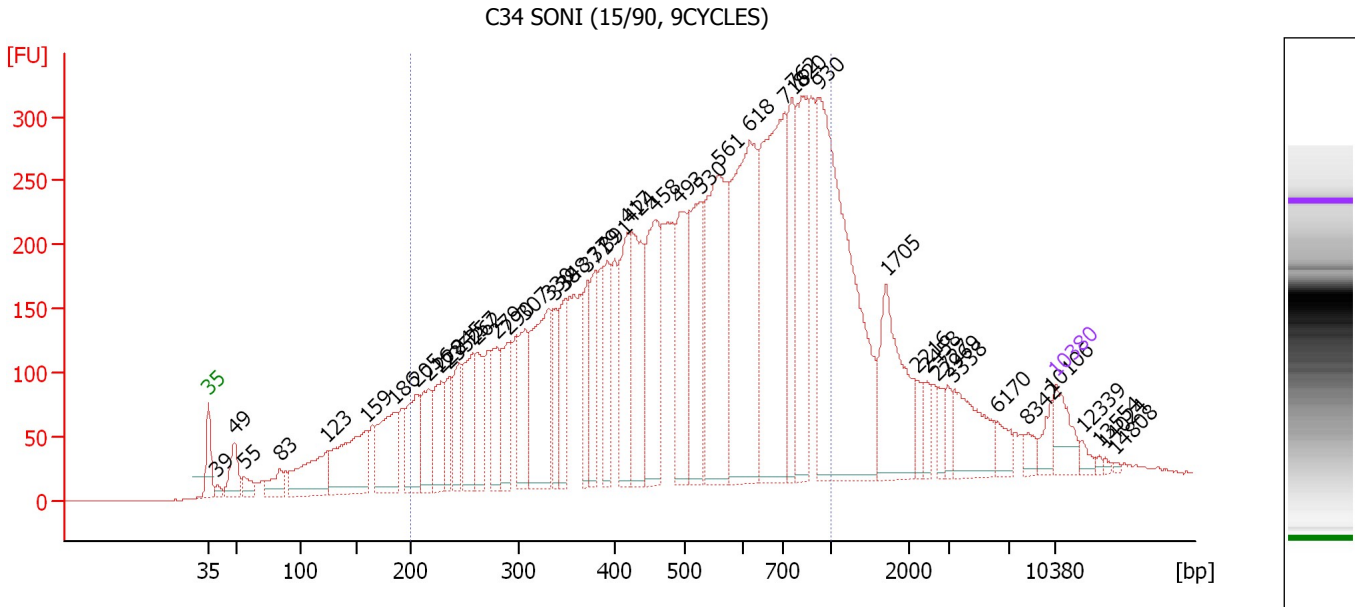
Region table for sample 3 : C35 SONI (15/90, 9CYCLES)

From [bp]	Molarity [pmol/l]	Average Size [bp]	Conc. [pg/µl]	To [bp]	Corr. Area	% of Total	Size distribution in CV [%]	Color
200	113,532.3	489	29,204.04	1,000	9,096.1	83	39.0	

Assay Class: High Sensitivity DNA Assay
 Data Path: C:\...t\2100 bioanalyzer\2100 expert\data\PDFs\2012-02-14_007.xad

Created: 2/14/2012 11:19:24 AM
 Modified: 2/14/2012 12:20:01 PM

Electropherogram Summary Continued ...



Overall Results for sample 4 : C34 SONI (15/90, 9CYCLES)

Number of peaks found: 47 Corr. Area 1: 8,281.3
 Noise: 0.4

Peak table for sample 4 : C34 SONI (15/90, 9CYCLES)


Peak	Size [bp]	Conc. [pg/μl]	Molarity [pmol/l]	Observations
1	35	125.00	5,411.3	Lower Marker
2	39	22.48	865.7	
3	49	124.38	3,853.0	
4	55	46.82	1,279.4	
5	83	75.64	1,374.3	
6	123	255.49	3,147.6	
7	159	353.51	3,360.6	
8	186	258.31	2,104.9	
9	205	212.34	1,568.4	
10	216	181.21	1,268.2	
11	228	162.94	1,081.2	
12	235	104.07	670.3	
13	245	153.92	951.4	
14	257	213.39	1,255.7	
15	262	145.33	840.7	
16	279	171.81	932.4	
17	290	171.68	896.7	
18	307	197.33	975.3	
19	330	388.89	1,784.2	
20	338	129.28	579.6	
21	348	141.10	614.6	
22	371	144.54	590.3	
23	379	160.52	641.3	
24	391	164.10	635.3	
25	417	262.30	952.3	
26	424	314.52	1,125.2	

Assay Class: High Sensitivity DNA Assay
 Data Path: C:\...t\2100 bioanalyzer\2100 expert\data\PDFs\2012-02-14_007.xad


Created: 2/14/2012 11:19:24 AM
 Modified: 2/14/2012 12:20:01 PM

Electropherogram Summary Continued ...

... Peak table for sample 4 : C34 SONI (15/90, 9CYCLES)

Peak	Size [bp]	Conc. [pg/μl]	Molarity [pmol/l]	Observations
27	458	354.18	1,172.6	
28	493	301.66	926.5	
29	530	295.23	844.4	
30	561	566.82	1,531.0	
31	618	679.76	1,666.4	
32	716	694.21	1,468.7	
33	762	223.33	444.4	
34	820	368.09	680.3	
35	930	937.76	1,527.8	
36	1,705	278.21	247.3	
37	2,216	38.77	26.5	
38	2,458	32.66	20.1	
39	2,727	35.29	19.6	
40	2,969	32.65	16.7	
41	3,338	141.76	64.4	
42	6,170	43.76	10.7	
43	8,342	27.58	5.0	
44	10,106	33.19	5.0	
45	 10,380	75.00	10.9	Upper Marker
46	12,339	0.00	0.0	
47	13,554	0.00	0.0	
48	14,024	0.00	0.0	
49	14,808	0.00	0.0	

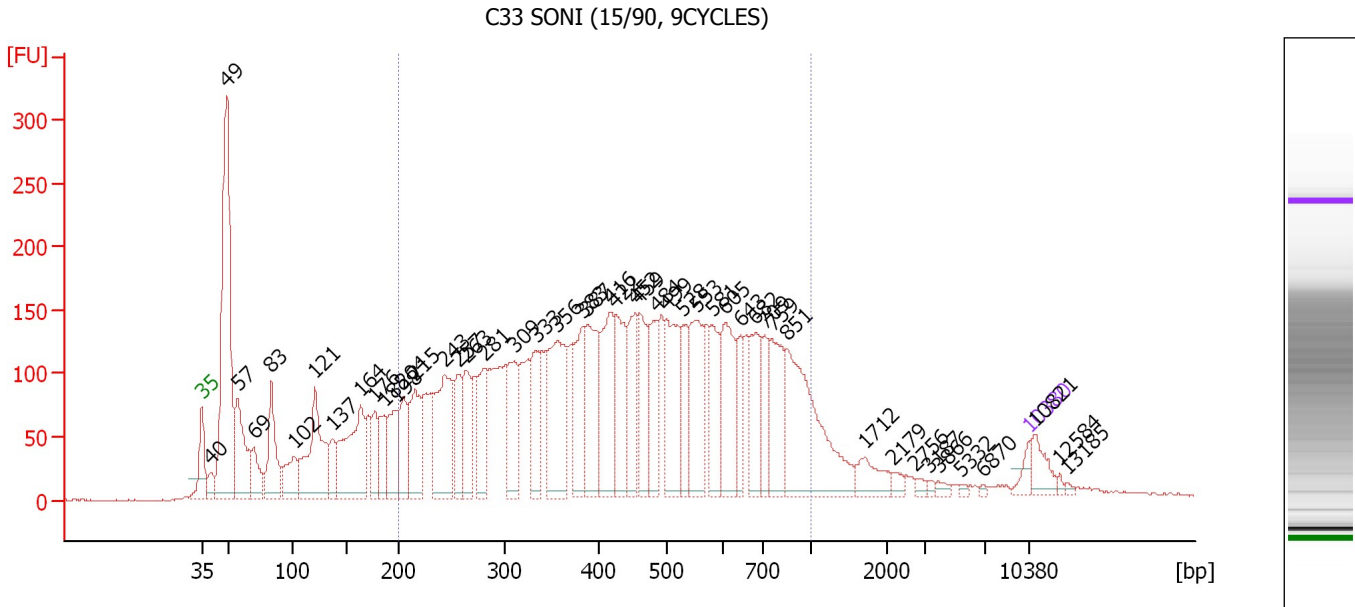
Region table for sample 4 : C34 SONI (15/90, 9CYCLES)

From [bp]	Molarity [pmol/l]	Average Size [bp]	Conc. [pg/μl]	To [bp]	Corr. Area	% of Total	Size distribution in CV [%]	Color
200	31,264.8	526	8,577.87	1,000	8,281.3	76	38.3	

Assay Class: High Sensitivity DNA Assay
 Data Path: C:\...t\2100 bioanalyzer\2100 expert\data\PDFs\2012-02-14_007.xad

Created: 2/14/2012 11:19:24 AM
 Modified: 2/14/2012 12:20:01 PM

Electropherogram Summary Continued ...



Overall Results for sample 5 : C33 SONI (15/90, 9CYCLES)

Number of peaks found: 48 Corr. Area 1: 5,493.2
 Noise: 0.7

Peak table for sample 5 : C33 SONI (15/90, 9CYCLES)


Peak	Size [bp]	Conc. [pg/μl]	Molarity [pmol/l]	Observations
1	35	125.00	5,411.3	Lower Marker
2	40	152.82	5,783.2	
3	49	3,036.63	94,032.5	
4	57	887.87	23,648.1	
5	69	346.84	7,562.1	
6	83	701.04	12,741.9	
7	102	393.05	5,856.8	
8	121	1,155.73	14,478.5	
9	137	261.86	2,890.9	
10	164	1,132.98	10,488.7	
11	176	312.21	2,684.2	
12	185	365.86	2,991.8	
13	198	433.88	3,322.6	
14	204	424.61	3,155.2	
15	215	700.37	4,935.3	
16	243	1,028.89	6,407.5	
17	257	415.71	2,451.5	
18	263	503.15	2,898.8	
19	281	543.67	2,935.0	
20	309	569.14	2,787.0	
21	333	603.29	2,749.1	
22	356	1,066.00	4,542.1	
23	383	573.15	2,266.3	
24	387	761.24	2,979.4	
25	416	760.07	2,768.5	
26	422	677.68	2,431.4	

Assay Class: High Sensitivity DNA Assay
 Data Path: C:\...t\2100 bioanalyzer\2100 expert\data\PDFs\2012-02-14_007.xad


Created: 2/14/2012 11:19:24 AM
 Modified: 2/14/2012 12:20:01 PM

Electropherogram Summary Continued ...

... Peak table for sample 5 : C33 SONI (15/90, 9CYCLES)

Peak	Size [bp]	Conc. [pg/µl]	Molarity [pmol/l]	Observations
27	452	559.66	1,874.2	
28	459	549.21	1,813.7	
29	484	453.22	1,418.3	
30	499	726.14	2,203.7	
31	528	369.38	1,059.6	
32	553	722.73	1,981.6	
33	581	444.50	1,159.7	
34	605	622.22	1,558.8	
35	643	269.19	634.1	
36	682	482.84	1,073.2	
37	709	308.18	658.7	
38	759	535.37	1,069.3	
39	851	1,275.81	2,270.6	
40	1,712	191.83	169.8	
41	2,179	51.00	35.5	
42	2,756	30.96	17.0	
43	3,187	18.04	8.6	
44	3,866	33.09	13.0	
45	5,332	15.79	4.5	
46	6,870	10.90	2.4	
47	 10,380	75.00	10.9	Upper Marker
48	10,821	0.00	0.0	
49	12,584	0.00	0.0	
50	13,185	0.00	0.0	

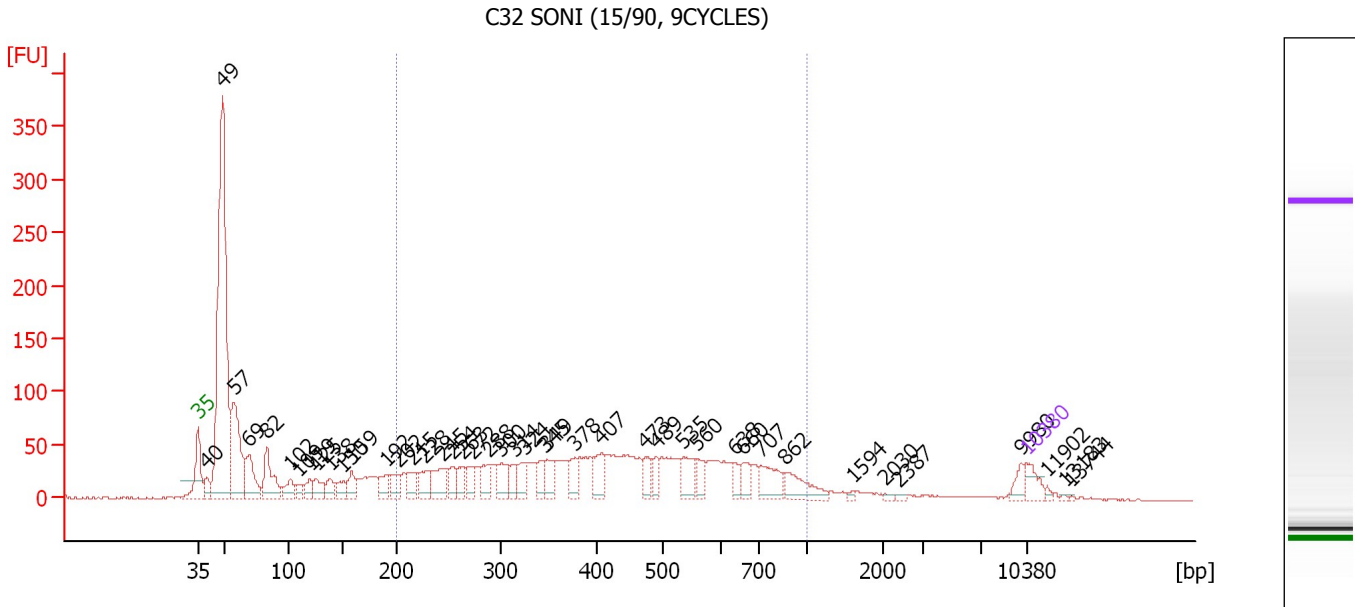
Region table for sample 5 : C33 SONI (15/90, 9CYCLES)

From [bp]	Molarity [pmol/l]	Average Size [bp]	Conc. [pg/µl]	To [bp]	Corr. Area	% of Total	Size distribution in CV [%]	Color
200	77,507.4	467	19,177.32	1,000	5,493.2	69	39.3	

Assay Class: High Sensitivity DNA Assay
 Data Path: C:\...t\2100 bioanalyzer\2100 expert\data\PDFs\2012-02-14_007.xad

Created: 2/14/2012 11:19:24 AM
 Modified: 2/14/2012 12:20:01 PM

Electropherogram Summary Continued ...



Overall Results for sample 6 : C32 SONI (15/90, 9CYCLES)

Number of peaks found: 43 Corr. Area 1: 1,600.0
 Noise: 0.6

Peak table for sample 6 : C32 SONI (15/90, 9CYCLES)

Peak	Size [bp]	Conc. [pg/μl]	Molarity [pmol/l]	Observations
1	35	125.00	5,411.3	Lower Marker
2	40	108.02	4,118.7	
3	49	2,767.82	86,246.4	
4	57	712.99	18,996.3	
5	69	301.32	6,612.0	
6	82	317.60	5,833.8	
7	102	121.63	1,813.4	
8	109	62.58	869.6	
9	119	90.25	1,145.3	
10	125	111.47	1,347.7	
11	138	101.99	1,118.5	
12	150	77.68	784.6	
13	159	118.03	1,127.9	
14	192	106.73	843.5	
15	202	99.21	743.1	
16	215	105.06	739.1	
17	228	124.38	826.5	
18	245	191.35	1,185.0	
19	254	113.04	673.6	
20	263	97.92	563.4	
21	272	111.51	621.4	
22	288	124.68	655.8	
23	300	163.60	827.2	
24	314	82.05	396.3	
25	324	116.63	544.7	
26	345	91.52	402.3	

Assay Class: High Sensitivity DNA Assay
 Data Path: C:\...t\2100 bioanalyzer\2100 expert\data\PDFs\2012-02-14_007.xad


Created: 2/14/2012 11:19:24 AM
 Modified: 2/14/2012 12:20:01 PM

Electropherogram Summary Continued ...

... Peak table for sample 6 : C32 SONI (15/90, 9CYCLES)

Peak	Size [bp]	Conc. [pg/μl]	Molarity [pmol/l]	Observations
27	349	126.02	547.7	
28	378	102.40	410.6	
29	407	146.40	545.2	
30	473	94.06	301.5	
31	489	82.08	254.2	
32	535	153.15	433.6	
33	560	90.39	244.8	
34	638	61.80	146.7	
35	660	91.16	209.2	
36	707	172.68	370.3	
37	862	162.74	286.0	
38	1,594	11.81	11.2	
39	2,030	9.58	7.1	
40	2,387	10.33	6.6	
41	9,980	53.36	8.1	
42	10,380	75.00	10.9	Upper Marker
43	11,902	0.00	0.0	
44	13,183	0.00	0.0	
45	13,744	0.00	0.0	

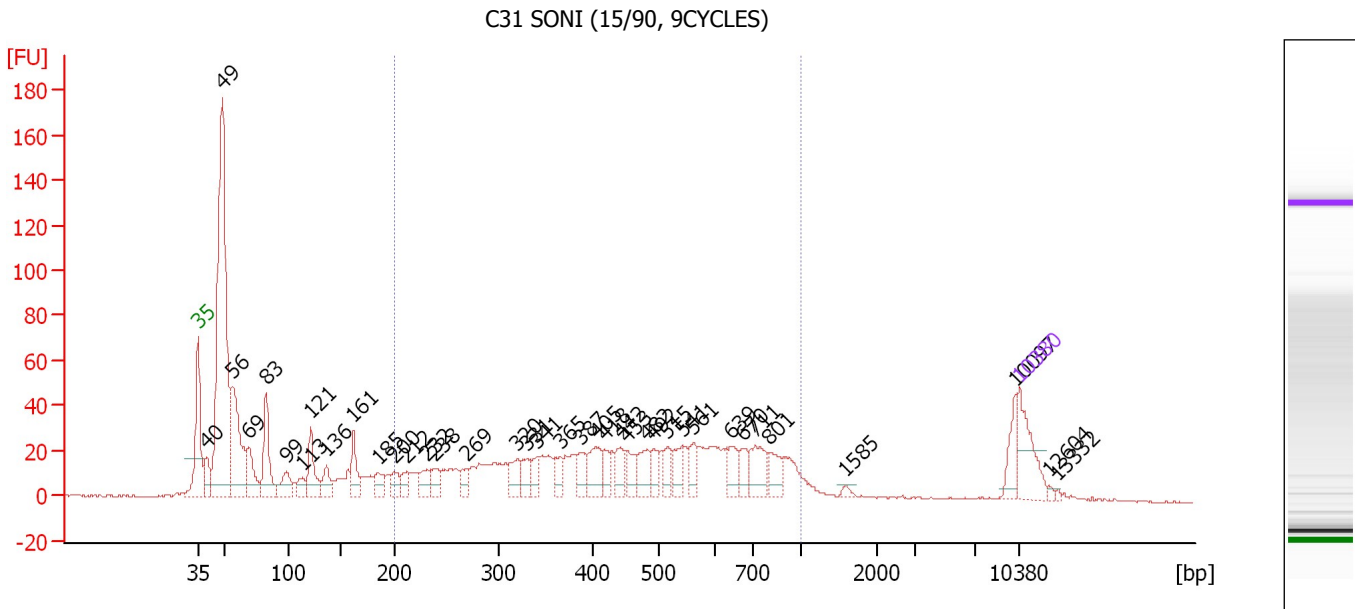
Region table for sample 6 : C32 SONI (15/90, 9CYCLES)

From [bp]	Molarity [pmol/l]	Average Size [bp]	Conc. [pg/μl]	To [bp]	Corr. Area	% of Total	Size distribution in CV [%]	Color
200	18,153.0	452	4,390.51	1,000	1,600.0	50	38.7	

Assay Class: High Sensitivity DNA Assay
 Data Path: C:\...t\2100 bioanalyzer\2100 expert\data\PDFs\2012-02-14_007.xad

Created: 2/14/2012 11:19:24 AM
 Modified: 2/14/2012 12:20:01 PM

Electropherogram Summary Continued ...



Overall Results for sample 7 : C31 SONI (15/90, 9CYCLES)

Number of peaks found: 38 Corr. Area 1: 842.1
 Noise: 0.5

Peak table for sample 7 : C31 SONI (15/90, 9CYCLES)

Peak	Size [bp]	Conc. [pg/μl]	Molarity [pmol/l]	Observations
1	35	125.00	5,411.3	Lower Marker
2	40	59.11	2,251.0	
3	49	843.75	26,219.9	
4	56	246.74	6,640.9	
5	69	88.49	1,942.6	
6	83	127.89	2,346.3	
7	99	52.66	805.0	
8	113	30.67	411.5	
9	121	86.41	1,078.5	
10	136	41.53	463.2	
11	161	65.94	618.7	
12	185	34.23	280.6	
13	200	30.32	229.7	
14	212	24.94	178.0	
15	232	36.43	237.8	
16	238	34.04	216.5	
17	269	24.98	140.8	
18	320	39.78	188.1	
19	331	35.21	161.4	
20	341	27.94	124.2	
21	365	30.51	126.5	
22	387	36.38	142.5	
23	405	59.08	220.8	
24	418	28.80	104.3	
25	442	41.36	141.7	
26	453	39.48	132.1	

Assay Class: High Sensitivity DNA Assay
 Data Path: C:\...t\2100 bioanalyzer\2100 expert\data\PDFs\2012-02-14_007.xad


Created: 2/14/2012 11:19:24 AM
 Modified: 2/14/2012 12:20:01 PM

Electropherogram Summary Continued ...

... Peak table for sample 7 : C31 SONI (15/90, 9CYCLES)

Peak	Size [bp]	Conc. [pg/μl]	Molarity [pmol/l]	Observations
27	482	47.47	149.1	
28	492	27.56	84.9	
29	515	32.97	97.0	
30	541	39.54	110.8	
31	561	35.08	94.7	
32	639	36.79	87.2	
33	670	27.54	62.3	
34	711	58.48	124.7	
35	801	34.17	64.7	
36	1,585	5.70	5.4	
37	10,097	35.50	5.3	
38	10,380	75.00	10.9	Upper Marker
39	12,604	0.00	0.0	
40	13,332	0.00	0.0	

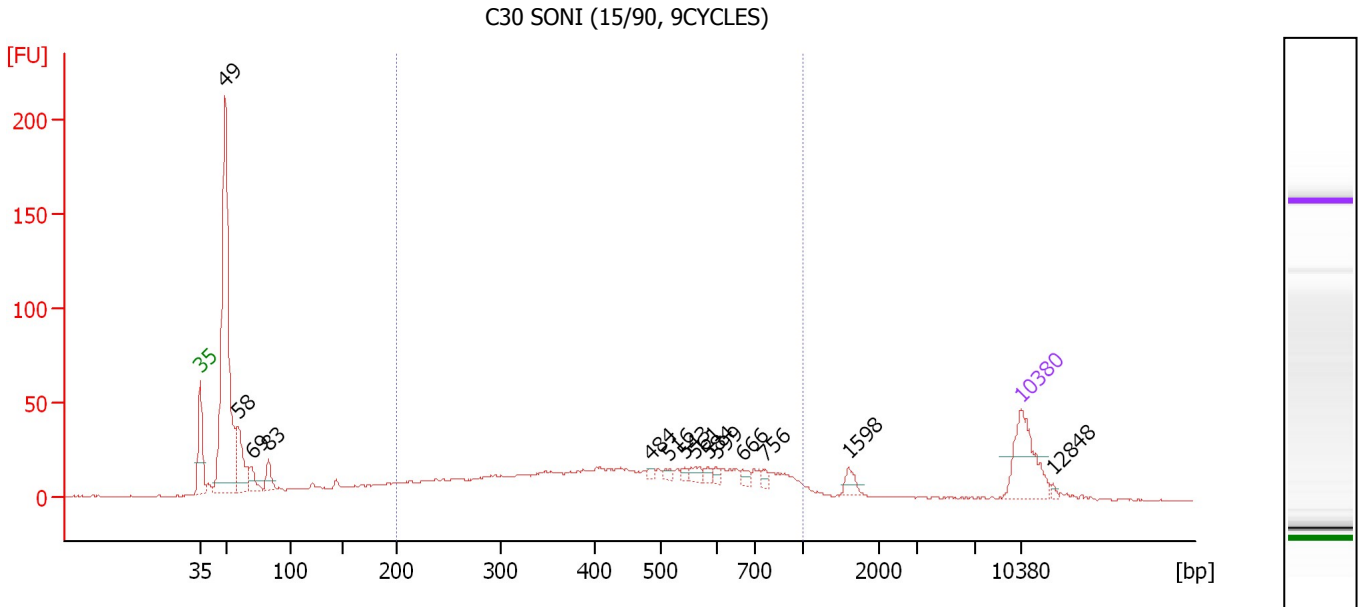
Region table for sample 7 : C31 SONI (15/90, 9CYCLES)

From [bp]	Molarity [pmol/l]	Average Size [bp]	Conc. [pg/μl]	To [bp]	Corr. Area	% of Total	Size distribution in CV [%]	Color
200	5,649.8	481	1,440.42	1,000	842.1	50	38.5	

Assay Class: High Sensitivity DNA Assay
 Data Path: C:\...t\2100 bioanalyzer\2100 expert\data\PDFs\2012-02-14_007.xad

Created: 2/14/2012 11:19:24 AM
 Modified: 2/14/2012 12:20:01 PM

Electropherogram Summary Continued ...



Overall Results for sample 8 : C30 SONI (15/90, 9CYCLES)

Number of peaks found: 14 Corr. Area 1: 604.0
 Noise: 0.4

Peak table for sample 8 : C30 SONI (15/90, 9CYCLES)

Peak	Size [bp]	Conc. [pg/μl]	Molarity [pmol/l]	Observations
1	35	125.00	5,411.3	Lower Marker
2	49	603.82	18,646.0	
3	58	106.58	2,763.6	
4	69	28.01	611.0	
5	83	30.62	558.7	
6	484	5.77	18.1	
7	516	6.90	20.3	
8	543	6.55	18.3	
9	561	12.34	33.3	
10	584	8.11	21.1	
11	599	6.90	17.5	
12	666	10.20	23.2	
13	756	6.76	13.5	
14	1,598	13.34	12.7	
15	10,380	75.00	10.9	Upper Marker
16	12,848	0.00	0.0	

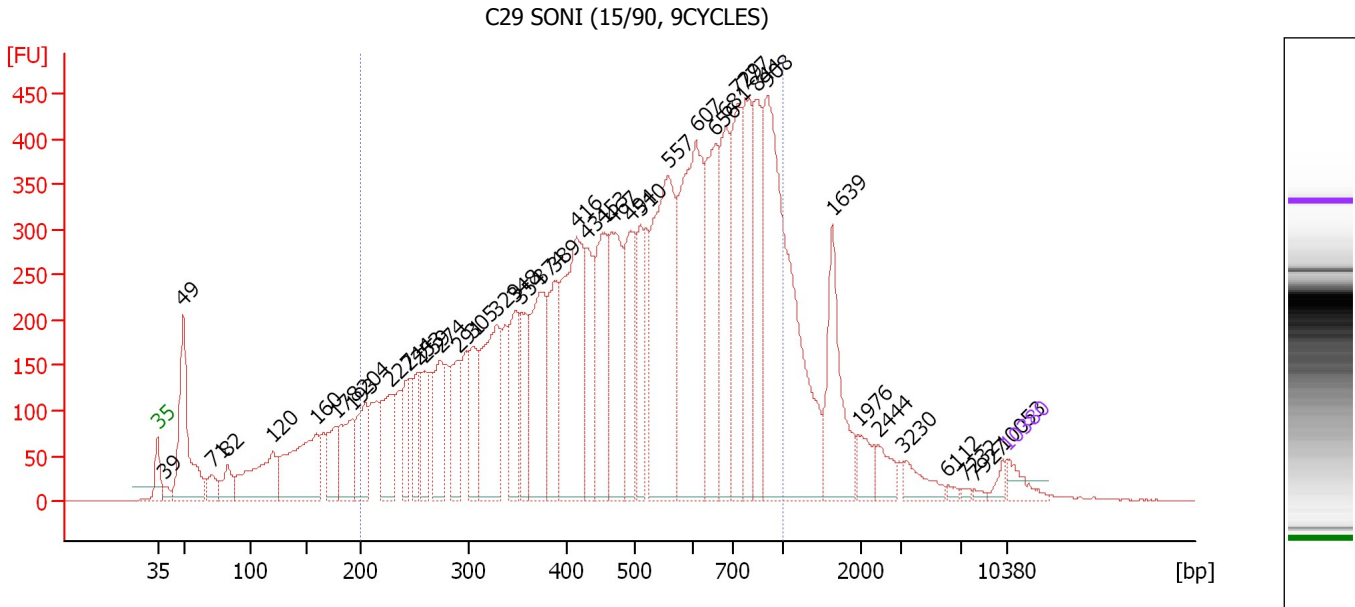
Region table for sample 8 : C30 SONI (15/90, 9CYCLES)

From [bp]	Molarity [pmol/l]	Average Size [bp]	Conc. [pg/μl]	To [bp]	Corr. Area	% of Total	Size distribution in CV [%]	Color
200	3,036.6	475	764.86	1,000	604.0	48	38.7	Blue

Assay Class: High Sensitivity DNA Assay
 Data Path: C:\...t\2100 bioanalyzer\2100 expert\data\PDFs\2012-02-14_007.xad

Created: 2/14/2012 11:19:24 AM
 Modified: 2/14/2012 12:20:01 PM

Electropherogram Summary Continued ...



Overall Results for sample 9 : C29 SONI (15/90, 9CYCLES)

Number of peaks found: 43 Corr. Area 1: 11,550.4
 Noise: 0.3

Peak table for sample 9 : C29 SONI (15/90, 9CYCLES)

Peak	Size [bp]	Conc. [pg/μl]	Molarity [pmol/l]	Observations
1	35	125.00	5,411.3	Lower Marker
2	39	56.78	2,192.7	
3	49	949.30	29,407.3	
4	71	133.11	2,850.6	
5	82	178.22	3,279.8	
6	120	581.47	7,338.5	
7	160	784.58	7,427.5	
8	178	260.18	2,214.6	
9	193	389.85	3,062.4	
10	204	362.24	2,688.0	
11	227	423.74	2,823.7	
12	244	229.23	1,421.2	
13	253	259.11	1,550.9	
14	259	279.95	1,638.9	
15	274	377.90	2,091.6	
16	291	371.21	1,934.4	
17	305	354.98	1,765.6	
18	329	819.32	3,775.9	
19	348	451.73	1,965.1	
20	354	323.27	1,383.4	
21	374	705.54	2,861.5	
22	389	501.31	1,955.0	
23	416	1,163.29	4,234.8	
24	431	427.35	1,503.1	
25	453	622.65	2,080.6	
26	467	727.00	2,357.8	

Assay Class: High Sensitivity DNA Assay
 Data Path: C:\...t\2100 bioanalyzer\2100 expert\data\PDFs\2012-02-14_007.xad


Created: 2/14/2012 11:19:24 AM
 Modified: 2/14/2012 12:20:01 PM

Electropherogram Summary Continued ...

... Peak table for sample 9 : C29 SONI (15/90, 9CYCLES)

Peak	Size [bp]	Conc. [pg/µl]	Molarity [pmol/l]	Observations
27	494	537.36	1,648.5	
28	510	360.07	1,069.7	
29	557	1,322.80	3,598.7	
30	607	1,378.91	3,441.7	
31	656	724.49	1,673.1	
32	681	640.43	1,424.2	
33	729	663.49	1,378.4	
34	777	570.37	1,112.8	
35	844	547.34	982.3	
36	908	1,822.71	3,040.1	
37	1,639	496.52	459.1	
38	1,976	105.09	80.6	
39	2,444	103.61	64.2	
40	3,230	105.66	49.6	
41	6,112	17.00	4.2	
42	7,232	12.58	2.6	
43	7,927	13.58	2.6	
44	10,053	36.76	5.5	
45	10,380	75.00	10.9	Upper Marker

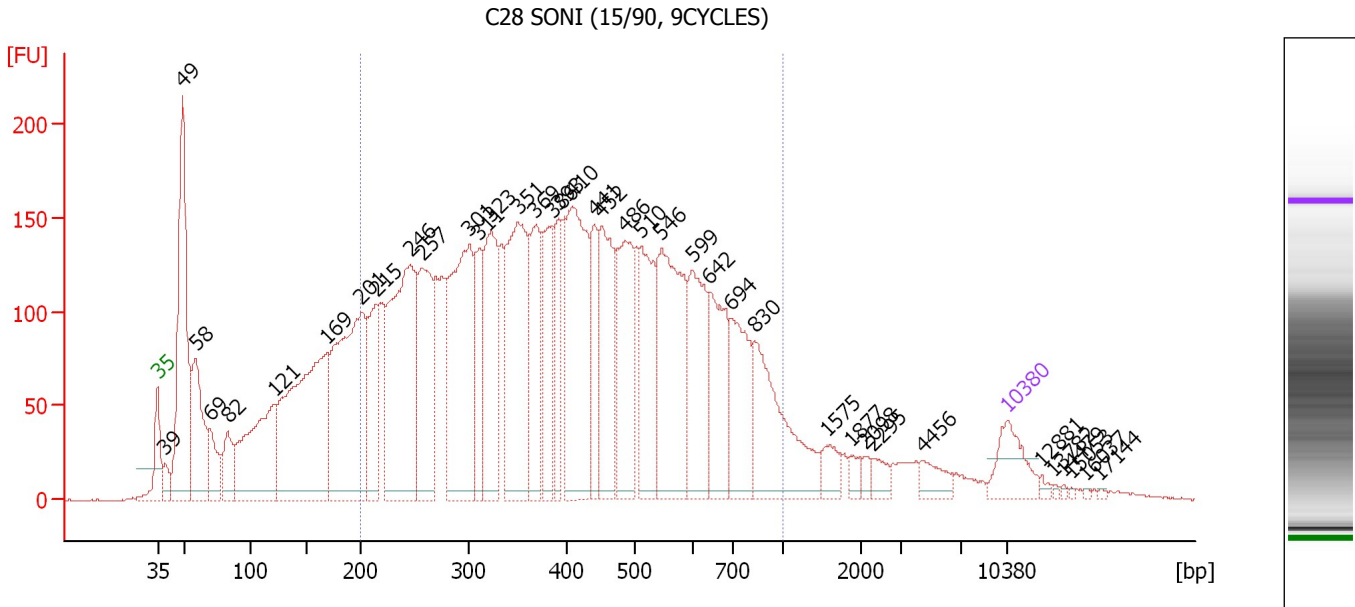
Region table for sample 9 : C29 SONI (15/90, 9CYCLES)

From [bp]	Molarity [pmol/l]	Average Size [bp]	Conc. [pg/µl]	To [bp]	Corr. Area	% of Total	Size distribution in CV [%]	Color
200	64,290.0	528	17,785.38	1,000	11,550.4	78	37.8	

Assay Class: High Sensitivity DNA Assay
 Data Path: C:\...t\2100 bioanalyzer\2100 expert\data\PDFs\2012-02-14_007.xad

Created: 2/14/2012 11:19:24 AM
 Modified: 2/14/2012 12:20:01 PM

Electropherogram Summary Continued ...



Overall Results for sample 10 : C28 SONI (15/90, 9CYCLES)

Number of peaks found: 39 Corr. Area 1: 5,715.9
 Noise: 0.5

Peak table for sample 10 : C28 SONI (15/90, 9CYCLES)

Peak	Size [bp]	Conc. [pg/μl]	Molarity [pmol/l]	Observations
1	35	125.00	5,411.3	Lower Marker
2	39	44.24	1,707.8	
3	49	638.68	19,893.4	
4	58	280.82	7,340.2	
5	69	116.20	2,546.2	
6	82	106.08	1,948.8	
7	121	413.00	5,157.2	
8	169	736.99	6,600.5	
9	201	635.94	4,792.0	
10	215	231.29	1,629.8	
11	246	617.99	3,805.9	
12	257	339.91	2,000.9	
13	301	522.32	2,630.2	
14	311	173.97	846.9	
15	323	298.37	1,398.1	
16	351	476.49	2,056.8	
17	369	216.10	887.7	
18	386	179.04	702.5	
19	393	130.33	502.4	
20	410	434.23	1,605.9	
21	441	130.33	448.3	
22	452	268.35	899.8	
23	486	270.87	844.5	
24	510	244.01	724.5	
25	546	401.85	1,115.5	
26	599	229.72	581.5	

Assay Class: High Sensitivity DNA Assay
 Data Path: C:\...t\2100 bioanalyzer\2100 expert\data\PDFs\2012-02-14_007.xad

Created: 2/14/2012 11:19:24 AM
 Modified: 2/14/2012 12:20:01 PM

Electropherogram Summary Continued ...

... Peak table for sample 10 : C28 SONI (15/90, 9CYCLES)

Peak	Size [bp]	Conc. [pg/μl]	Molarity [pmol/l]	Observations
27	642	209.61	495.1	
28	694	198.88	434.5	
29	830	283.51	517.5	
30	1,575	40.16	38.6	
31	1,877	19.77	16.0	
32	2,098	15.03	10.9	
33	2,295	24.69	16.3	
34	4,456	36.72	12.5	
35	10,380	75.00	10.9	Upper Marker
36	12,881	0.00	0.0	
37	13,782	0.00	0.0	
38	14,479	0.00	0.0	
39	15,053	0.00	0.0	
40	16,037	0.00	0.0	
41	17,144	0.00	0.0	

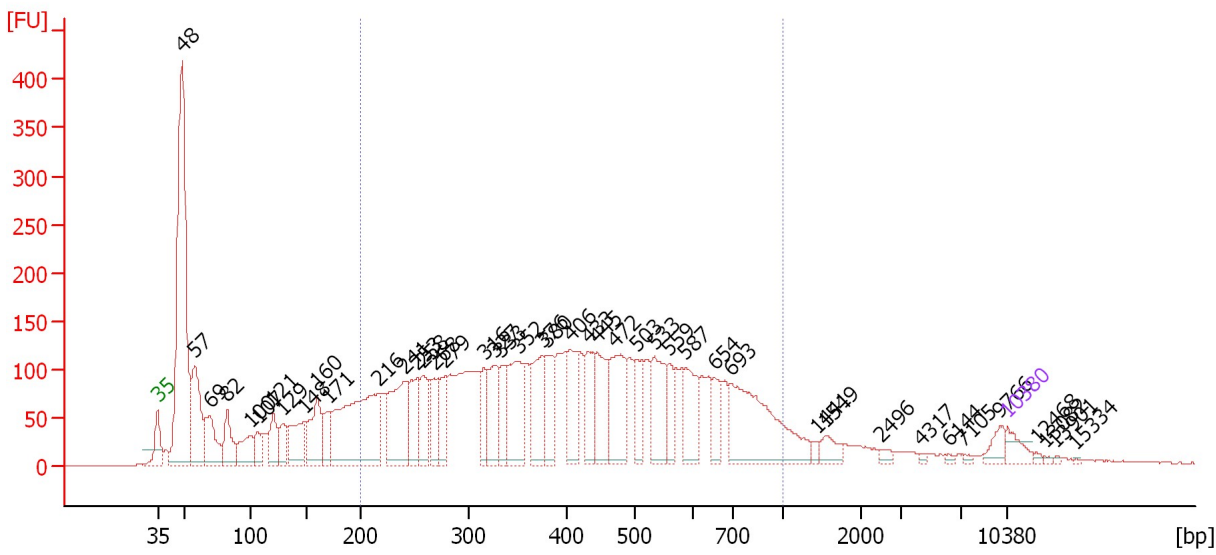
Region table for sample 10 : C28 SONI (15/90, 9CYCLES)

From [bp]	Molarity [pmol/l]	Average Size [bp]	Conc. [pg/μl]	To [bp]	Corr. Area	% of Total	Size distribution in CV [%]	Color
200	28,056.5	434	6,559.92	1,000	5,715.9	71	38.9	

Assay Class: High Sensitivity DNA Assay
 Data Path: C:\...t\2100 bioanalyzer\2100 expert\data\PDFs\2012-02-14_007.xad

Created: 2/14/2012 11:19:24 AM
 Modified: 2/14/2012 12:20:01 PM

Electropherogram Summary Continued ...



Overall Results for sample 11 :

Number of peaks found: 44 Corr. Area 1: 4,415.5
 Noise: 0.4

Peak table for sample 11 :

Peak	Size [bp]	Conc. [pg/μl]	Molarity [pmol/l]	Observations
1	35	125.00	5,411.3	Lower Marker
2	48	2,518.39	78,962.4	
3	57	654.11	17,236.9	
4	69	369.18	8,096.2	
5	82	281.32	5,199.9	
6	100	244.35	3,702.1	
7	107	133.04	1,891.6	
8	121	228.54	2,869.0	
9	129	179.87	2,108.2	
10	148	340.33	3,485.3	
11	160	420.39	3,975.0	
12	171	185.81	1,651.1	
13	216	1,175.30	8,232.6	
14	241	612.62	3,858.6	
15	253	299.13	1,791.8	
16	258	303.36	1,780.9	
17	268	211.36	1,193.1	
18	279	242.14	1,316.2	
19	316	208.01	997.4	
20	327	319.43	1,480.4	
21	333	238.70	1,085.2	
22	352	485.23	2,087.2	
23	376	415.21	1,673.9	
24	380	251.93	1,003.4	
25	406	297.23	1,108.0	
26	433	255.70	894.3	

Assay Class: High Sensitivity DNA Assay
 Data Path: C:\...t\2100 bioanalyzer\2100 expert\data\PDFs\2012-02-14_007.xad


Created: 2/14/2012 11:19:24 AM
 Modified: 2/14/2012 12:20:01 PM

Electropherogram Summary Continued ...

... Peak table for sample 11 :

Peak	Size [bp]	Conc. [pg/μl]	Molarity [pmol/l]	Observations
27	445	374.16	1,272.9	
28	472	436.05	1,399.4	
29	503	185.58	558.5	
30	533	349.84	994.2	
31	559	183.95	498.6	
32	587	320.17	826.6	
33	654	168.52	390.6	
34	693	842.81	1,842.6	
35	1,441	26.32	27.7	
36	1,549	81.68	79.9	
37	2,496	27.09	16.4	
38	4,317	12.80	4.5	
39	6,144	11.87	2.9	
40	7,105	11.30	2.4	
41	9,766	67.96	10.5	
42	10,380	75.00	10.9	Upper Marker
43	12,468	0.00	0.0	
44	13,082	0.00	0.0	
45	13,901	0.00	0.0	
46	15,334	0.00	0.0	

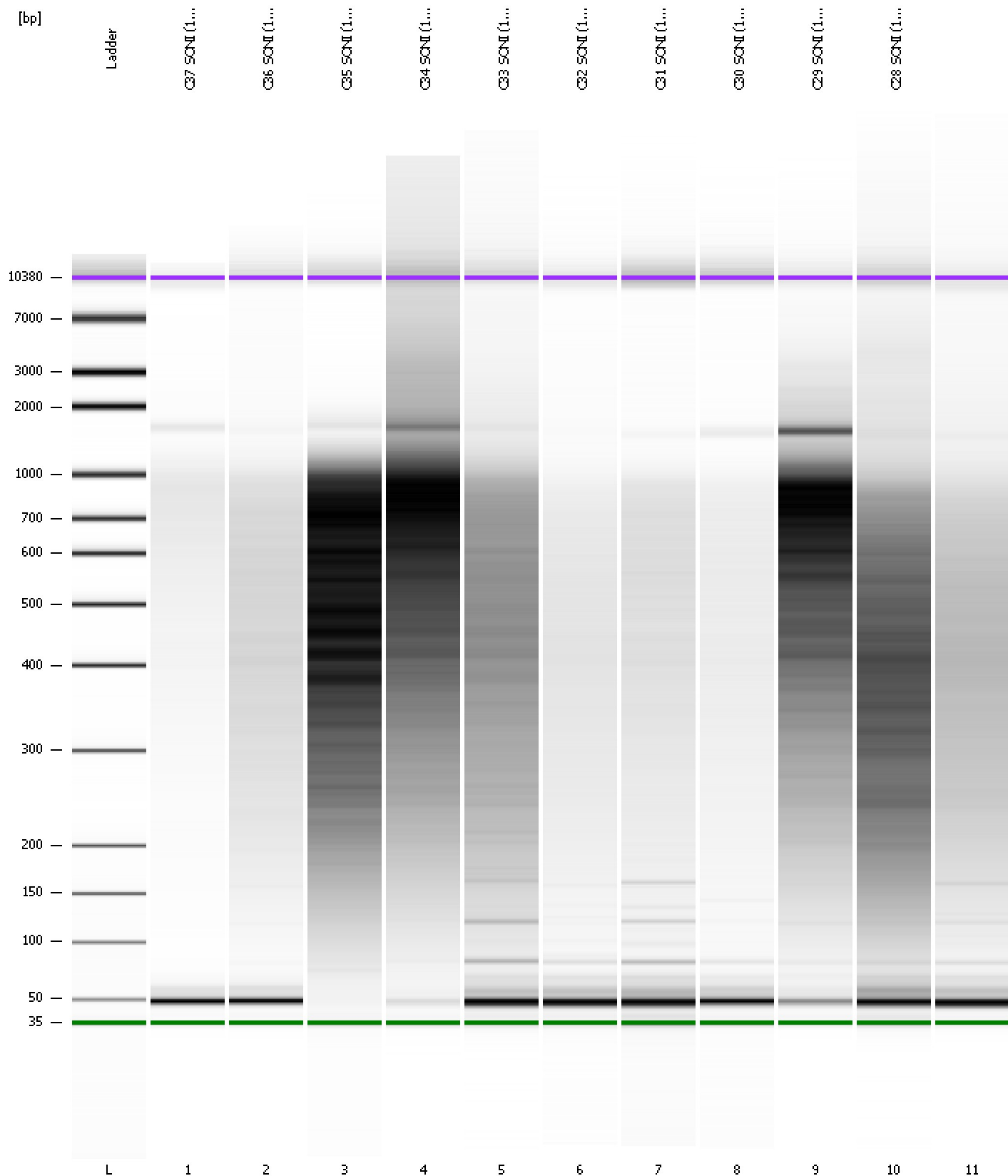
Region table for sample 11 :

From [bp]	Molarity [pmol/l]	Average Size [bp]	Conc. [pg/μl]	To [bp]	Corr. Area	% of Total	Size distribution in CV [%]	Color
200	42,265.6	442	10,055.56	1,000	4,415.5	65	38.8	

Assay Class: High Sensitivity DNA Assay
Data Path: C:\...t\2100 bioanalyzer\2100 expert\data\PDFs\2012-02-14_007.xad

Created: 2/14/2012 11:19:24 AM
Modified: 2/14/2012 12:20:01 PM

Gel Image



Assay Class: High Sensitivity DNA Assay
 Data Path: C:\...t\2100 bioanalyzer\2100 expert\data\PDFs\2012-02-14_007.xad

Created: 2/14/2012 11:19:24 AM
 Modified: 2/14/2012 12:20:01 PM

Run Logbook

Description	Number	Source	Category	Sub Category	Time	Time Zone	User	Host
Run ended on port 1 (Number of wells acquired: 12)		Instrument	Run		2/14/2012 12:00:44 PM	(GMT --08:00) Pacific Standard Time	UC Davis	D8XSMGH1
Run started on port 1 (File: C:\Program Files\Agilent\2100 bioanalyzer\2100 expert\data\PDFs\2012-02-14_007.xad)		Instrument	Run		2/14/2012 11:19:29 AM	(GMT --08:00) Pacific Standard Time	UC Davis	D8XSMGH1
Product Number : G2938B		Instrument	Run		2/14/2012 11:19:29 AM	(GMT --08:00) Pacific Standard Time	UC Davis	D8XSMGH1
Name :		Instrument	Run		2/14/2012 11:19:29 AM	(GMT --08:00) Pacific Standard Time	UC Davis	D8XSMGH1
Vendor : Agilent Technologies		Instrument	Run		2/14/2012 11:19:29 AM	(GMT --08:00) Pacific Standard Time	UC Davis	D8XSMGH1
Serial# : DE13701086		Instrument	Run		2/14/2012 11:19:29 AM	(GMT --08:00) Pacific Standard Time	UC Davis	D8XSMGH1
Firmware : C.01.069		Instrument	Run		2/14/2012 11:19:29 AM	(GMT --08:00) Pacific Standard Time	UC Davis	D8XSMGH1
Cartridge : Electrode		Instrument	Run		2/14/2012 11:19:29 AM	(GMT --08:00) Pacific Standard Time	UC Davis	D8XSMGH1