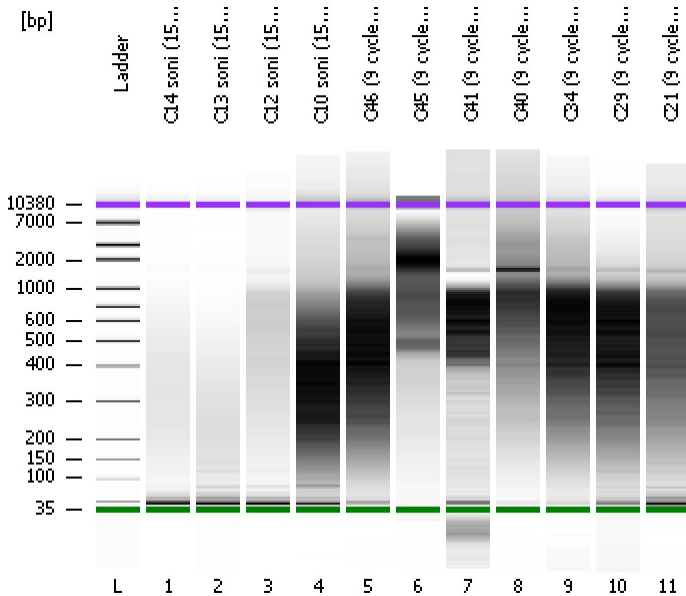


Assay Class: High Sensitivity DNA Assay
Data Path: C:\...ents and Settings\Bioanalyzer\2012-02-15\2012-02-15_001.xad

Created: 2/15/2012 9:18:26 AM
Modified: 2/15/2012 11:14:46 AM

Electrophoresis File Run Summary



Instrument Information:

Instrument Name: DE13701086 Firmware: C.01.069
Serial#: DE13701086 Type: G2938B

Assay Information:

Assay Origin Path: C:\Program Files\Agilent\2100 bioanalyzer\2100 expert\assays\dsDNA\High Sensitivity DNA.xsy
Assay Class: High Sensitivity DNA Assay
Version: 1.03
Assay Comments: Copyright © 2003-2010 Agilent Technologies

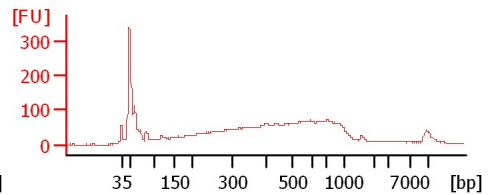
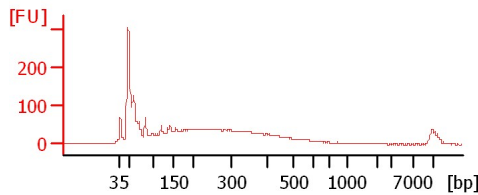
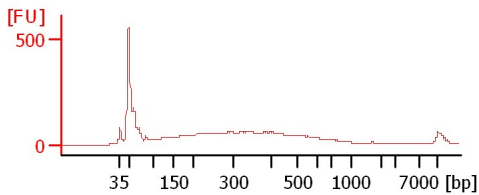
Chip Information:

Chip Lot #:
Reagent Kit Lot #:
Chip Comments:

C14 soni (15/90, 9 cycles)

C13 soni (15/90, 9 cycles)

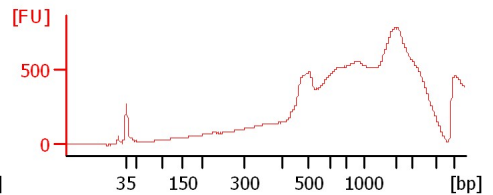
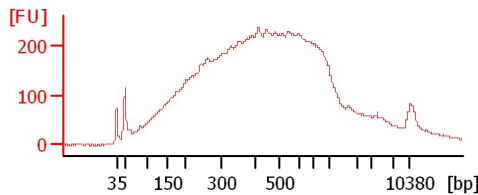
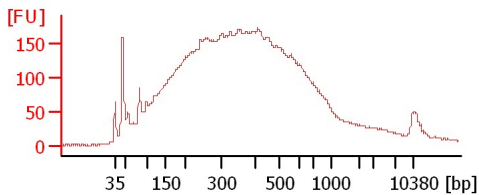
C12 soni (15/90, 9 cycles)



C10 soni (15/90, 9 cycles)

C46 (9 cycles + 3 cycles)

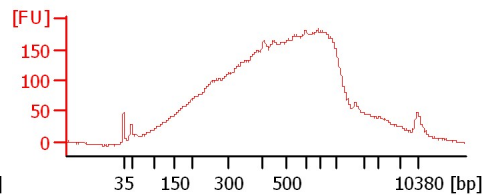
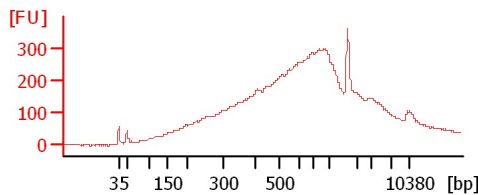
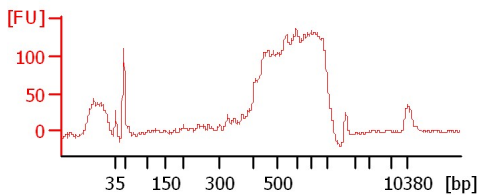
C45 (9 cycles + 3 cycles)



C41 (9 cycles + 3 cycles)

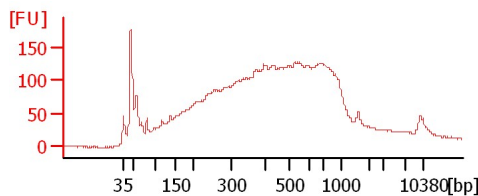
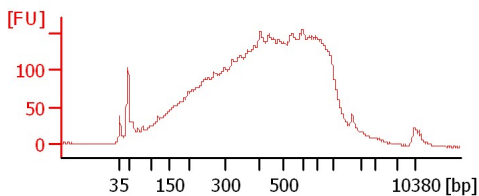
C40 (9 cycles + 3 cycles)

C34 (9 cycles + 3 cycles)



C29 (9 cycles + 3 cycles)

C21 (9 cycles + 3 cycles)



Assay Class: High Sensitivity DNA Assay
Data Path: C:\...ents and Settings\Bioanalyzer\2012-02-15\2012-02-15_001.xad

Created: 2/15/2012 9:18:26 AM
Modified: 2/15/2012 11:14:46 AM

Electrophoresis File Run Summary (Chip Summary)

| Sample Name | Sample Comment | Rest. Digest | Status | Observation | Result Label | Result Color |
|----------------------------|----------------|--------------------------|--------|-------------|--------------|--------------|
| C14 soni (15/90, 9 cycles) | | <input type="checkbox"/> | ✓ | | | |
| C13 soni (15/90, 9 cycles) | | <input type="checkbox"/> | ✓ | | | |
| C12 soni (15/90, 9 cycles) | | <input type="checkbox"/> | ✓ | | | |
| C10 soni (15/90, 9 cycles) | | <input type="checkbox"/> | ✓ | | | |
| C46 (9 cycles + 3 cycles) | | <input type="checkbox"/> | ✓ | | | |
| C45 (9 cycles + 3 cycles) | | <input type="checkbox"/> | ✓ | | | |
| C41 (9 cycles + 3 cycles) | | <input type="checkbox"/> | ✓ | | | |
| C40 (9 cycles + 3 cycles) | | <input type="checkbox"/> | ✓ | | | |
| C34 (9 cycles + 3 cycles) | | <input type="checkbox"/> | ✓ | | | |
| C29 (9 cycles + 3 cycles) | | <input type="checkbox"/> | ✓ | | | |
| C21 (9 cycles + 3 cycles) | | <input type="checkbox"/> | ✓ | | | |
| Ladder | | <input type="checkbox"/> | ✓ | | | |

Chip Lot #**Reagent Kit Lot #****Chip Comments :**

Assay Class: High Sensitivity DNA Assay
Data Path: C:\...ents and Settings\Bioanalyzer\2012-02-15\2012-02-15_001.xad

Created: 2/15/2012 9:18:26 AM
Modified: 2/15/2012 11:14:46 AM

Electrophoresis Assay Details

General Analysis Settings

Number of Available Sample and Ladder Wells (Max.) : 12
Minimum Visible Range [s] : 32
Maximum Visible Range [s] : 138
Start Analysis Time Range [s] : 33
End Analysis Time Range [s] : 137.5
Ladder Concentration [pg/μl] : 1950
Uses Standard Area for Ladder Fragments
Lower Marker Concentration [pg/μl] : 125
Upper Marker Concentration [pg/μl] : 75
Used Upper Marker for Quantitation
Standard Curve Fit is Point to Point
Show Data Aligned to Lower and Upper Marker

Integrator Settings

Integration Start Time [s] : 33.05
Integration End Time [s] : 137
Slope Threshold : 0.8
Height Threshold [FU] : 5
Area Threshold : 0.1
Width Threshold [s] : 0.6
Baseline Plateau [s] : 0.5

Filter Settings

Filter Width [s] : 0.5
Polynomial Order : 4

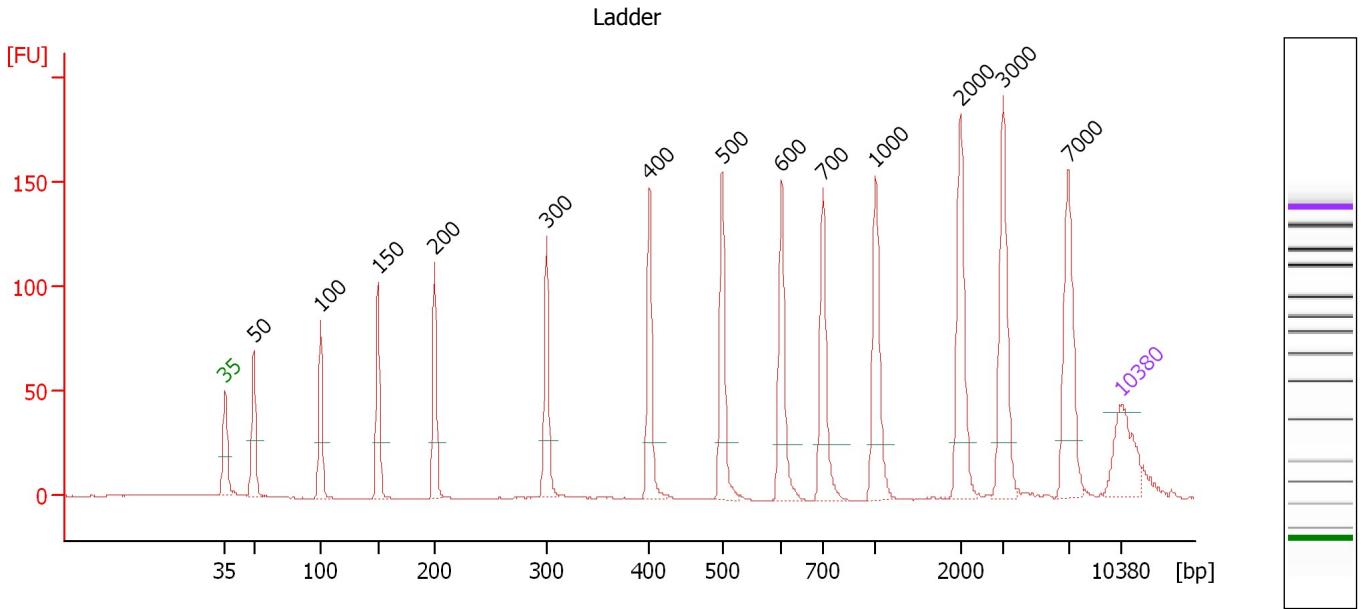
Ladder

| Ladder Peak | Size | Area |
|-------------|-------|------|
| 1 | 35 | 160 |
| 2 | 50 | 210 |
| 3 | 100 | 208 |
| 4 | 150 | 221 |
| 5 | 200 | 242 |
| 6 | 300 | 270 |
| 7 | 400 | 305 |
| 8 | 500 | 306 |
| 9 | 600 | 336 |
| 10 | 700 | 321 |
| 11 | 1000 | 366 |
| 12 | 2000 | 413 |
| 13 | 3000 | 411 |
| 14 | 7000 | 400 |
| 15 | 10380 | 214 |

Assay Class: High Sensitivity DNA Assay
 Data Path: C:\...ents and Settings\Bioanalyzer\2012-02-15\2012-02-15_001.xad

Created: 2/15/2012 9:18:26 AM
 Modified: 2/15/2012 11:14:46 AM

Electropherogram Summary



Overall Results for Ladder

Noise: 0.1

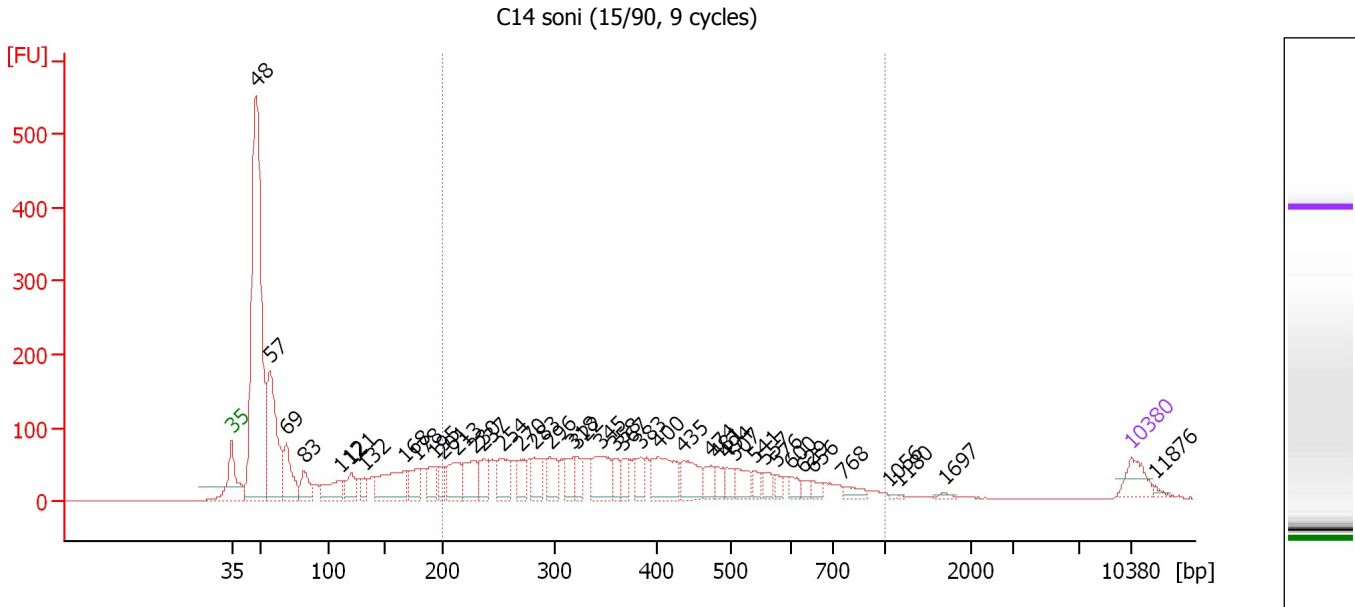
Peak table for Ladder

| Peak | Size [bp] | Conc. [pg/μl] | Molarity [pmol/l] | Observations |
|------|-----------|---------------|-------------------|--------------|
| 1 | 35 | 125.00 | 5,411.3 | Lower Marker |
| 2 | 50 | 150.00 | 4,545.5 | Ladder Peak |
| 3 | 100 | 150.00 | 2,272.7 | Ladder Peak |
| 4 | 150 | 150.00 | 1,515.2 | Ladder Peak |
| 5 | 200 | 150.00 | 1,136.4 | Ladder Peak |
| 6 | 300 | 150.00 | 757.6 | Ladder Peak |
| 7 | 400 | 150.00 | 568.2 | Ladder Peak |
| 8 | 500 | 150.00 | 454.5 | Ladder Peak |
| 9 | 600 | 150.00 | 378.8 | Ladder Peak |
| 10 | 700 | 150.00 | 324.7 | Ladder Peak |
| 11 | 1,000 | 150.00 | 227.3 | Ladder Peak |
| 12 | 2,000 | 150.00 | 113.6 | Ladder Peak |
| 13 | 3,000 | 150.00 | 75.8 | Ladder Peak |
| 14 | 7,000 | 150.00 | 32.5 | Ladder Peak |
| 15 | 10,380 | 75.00 | 10.9 | Upper Marker |

Assay Class: High Sensitivity DNA Assay
 Data Path: C:\...ents and Settings\Bioanalyzer\2012-02-15\2012-02-15_001.xad

Created: 2/15/2012 9:18:26 AM
 Modified: 2/15/2012 11:14:46 AM

Electropherogram Summary Continued ...



Overall Results for sample 1 : C14 soni (15/90, 9 cycles)

Number of peaks found: 41 Corr. Area 1: 2,196.6
 Noise: 0.3

Peak table for sample 1 : C14 soni (15/90, 9 cycles)


| Peak | Size [bp] | Conc. [pg/μl] | Molarity [pmol/l] | Observations |
|------|-----------|---------------|-------------------|--------------|
| 1 | 35 | 125.00 | 5,411.3 | Lower Marker |
| 2 | 48 | 2,201.59 | 69,545.6 | |
| 3 | 57 | 726.91 | 19,313.5 | |
| 4 | 69 | 252.37 | 5,519.6 | |
| 5 | 83 | 132.70 | 2,430.8 | |
| 6 | 112 | 165.31 | 2,241.2 | |
| 7 | 121 | 122.05 | 1,533.4 | |
| 8 | 132 | 64.69 | 743.9 | |
| 9 | 168 | 297.27 | 2,684.9 | |
| 10 | 178 | 135.71 | 1,154.6 | |
| 11 | 195 | 100.19 | 780.3 | |
| 12 | 201 | 78.66 | 594.0 | |
| 13 | 213 | 174.42 | 1,243.6 | |
| 14 | 230 | 167.80 | 1,107.4 | |
| 15 | 237 | 113.14 | 722.8 | |
| 16 | 254 | 150.10 | 894.5 | |
| 17 | 270 | 93.43 | 524.5 | |
| 18 | 283 | 116.23 | 623.0 | |
| 19 | 296 | 106.23 | 543.0 | |
| 20 | 318 | 95.69 | 455.5 | |
| 21 | 322 | 75.97 | 357.6 | |
| 22 | 345 | 183.58 | 807.1 | |
| 23 | 358 | 71.61 | 303.0 | |
| 24 | 367 | 56.84 | 234.5 | |
| 25 | 383 | 81.55 | 322.3 | |
| 26 | 400 | 221.08 | 836.4 | |

Assay Class: High Sensitivity DNA Assay
 Data Path: C:\...ents and Settings\Bioanalyzer\2012-02-15\2012-02-15_001.xad


Created: 2/15/2012 9:18:26 AM
 Modified: 2/15/2012 11:14:46 AM

Electropherogram Summary Continued ...

... Peak table for sample 1 : C14 soni (15/90, 9 cycles)

| Peak | Size [bp] | Conc. [pg/μl] | Molarity [pmol/l] | Observations |
|------|--|---------------|-------------------|--------------|
| 27 | 435 | 147.23 | 512.4 | |
| 28 | 474 | 68.78 | 219.9 | |
| 29 | 481 | 51.87 | 163.3 | |
| 30 | 494 | 52.19 | 160.0 | |
| 31 | 507 | 80.20 | 239.5 | |
| 32 | 541 | 40.66 | 113.8 | |
| 33 | 557 | 46.67 | 127.0 | |
| 34 | 576 | 29.55 | 77.7 | |
| 35 | 600 | 36.11 | 91.2 | |
| 36 | 629 | 27.32 | 65.8 | |
| 37 | 656 | 31.93 | 73.8 | |
| 38 | 768 | 40.93 | 80.7 | |
| 39 | 1,056 | 4.98 | 7.2 | |
| 40 | 1,180 | 2.87 | 3.7 | |
| 41 | 1,697 | 10.61 | 9.5 | |
| 42 |  10,380 | 75.00 | 10.9 | Upper Marker |
| 43 | 11,876 | 0.00 | 0.0 | |

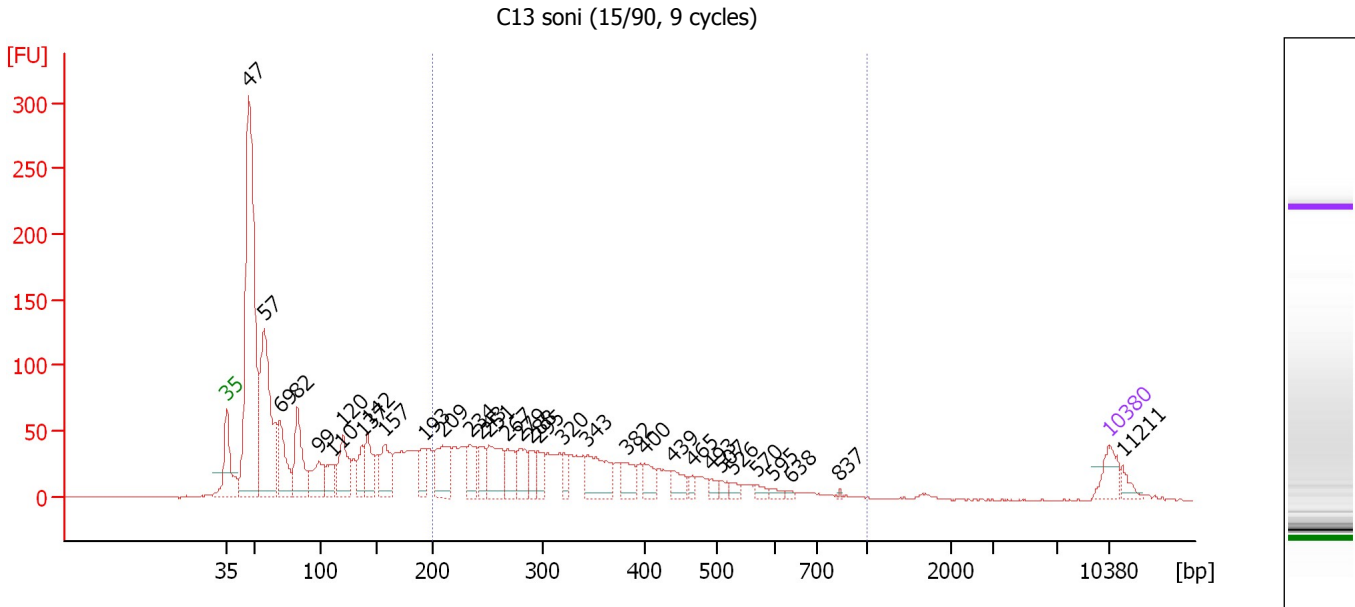
Region table for sample 1 : C14 soni (15/90, 9 cycles)

| From [bp] | Molarity [pmol/l] | Average Size [bp] | Conc. [pg/μl] | To [bp] | Corr. Area | % of Total | Size distribution in CV [%] | Color |
|-----------|-------------------|-------------------|---------------|---------|------------|------------|-----------------------------|---|
| 200 | 13,886.0 | 394 | 3,032.10 | 1,000 | 2,196.6 | 47 | 37.8 |  |

Assay Class: High Sensitivity DNA Assay
 Data Path: C:\...ents and Settings\Bioanalyzer\2012-02-15\2012-02-15_001.xad

Created: 2/15/2012 9:18:26 AM
 Modified: 2/15/2012 11:14:46 AM

Electropherogram Summary Continued ...



Overall Results for sample 2 : C13 soni (15/90, 9 cycles)

Number of peaks found: 33 Corr. Area 1: 1,141.6
 Noise: 0.6

Peak table for sample 2 : C13 soni (15/90, 9 cycles)


| Peak | Size [bp] | Conc. [pg/μl] | Molarity [pmol/l] | Observations |
|------|-----------|---------------|-------------------|--------------|
| 1 | 35 | 125.00 | 5,411.3 | Lower Marker |
| 2 | 47 | 1,941.30 | 62,887.4 | |
| 3 | 57 | 919.60 | 24,380.9 | |
| 4 | 69 | 299.02 | 6,544.7 | |
| 5 | 82 | 334.38 | 6,170.3 | |
| 6 | 99 | 181.48 | 2,788.4 | |
| 7 | 110 | 117.71 | 1,625.0 | |
| 8 | 120 | 252.06 | 3,190.5 | |
| 9 | 137 | 114.26 | 1,265.8 | |
| 10 | 142 | 185.39 | 1,985.0 | |
| 11 | 157 | 201.45 | 1,947.3 | |
| 12 | 193 | 121.58 | 953.9 | |
| 13 | 209 | 249.86 | 1,815.7 | |
| 14 | 234 | 152.39 | 988.3 | |
| 15 | 243 | 104.23 | 650.4 | |
| 16 | 251 | 228.82 | 1,381.2 | |
| 17 | 267 | 136.00 | 770.5 | |
| 18 | 279 | 132.87 | 721.5 | |
| 19 | 288 | 80.65 | 424.0 | |
| 20 | 295 | 88.19 | 452.2 | |
| 21 | 320 | 65.11 | 308.5 | |
| 22 | 343 | 217.39 | 959.1 | |
| 23 | 382 | 95.14 | 377.1 | |
| 24 | 400 | 82.52 | 312.8 | |
| 25 | 439 | 73.40 | 253.5 | |
| 26 | 465 | 26.24 | 85.4 | |

Assay Class: High Sensitivity DNA Assay
 Data Path: C:\...ents and Settings\Bioanalyzer\2012-02-15\2012-02-15_001.xad


Created: 2/15/2012 9:18:26 AM
 Modified: 2/15/2012 11:14:46 AM

Electropherogram Summary Continued ...

... Peak table for sample 2 : C13 soni (15/90, 9 cycles)

| Peak | Size [bp] | Conc. [pg/µl] | Molarity [pmol/l] | Observations |
|------|--|---------------|-------------------|--------------|
| 27 | 493 | 29.83 | 91.7 | |
| 28 | 507 | 28.23 | 84.4 | |
| 29 | 526 | 28.63 | 82.5 | |
| 30 | 570 | 24.34 | 64.7 | |
| 31 | 595 | 19.35 | 49.2 | |
| 32 | 638 | 10.35 | 24.6 | |
| 33 | 837 | 5.31 | 9.6 | |
| 34 |  10,380 | 75.00 | 10.9 | Upper Marker |
| 35 | 11,211 | 0.00 | 0.0 | |

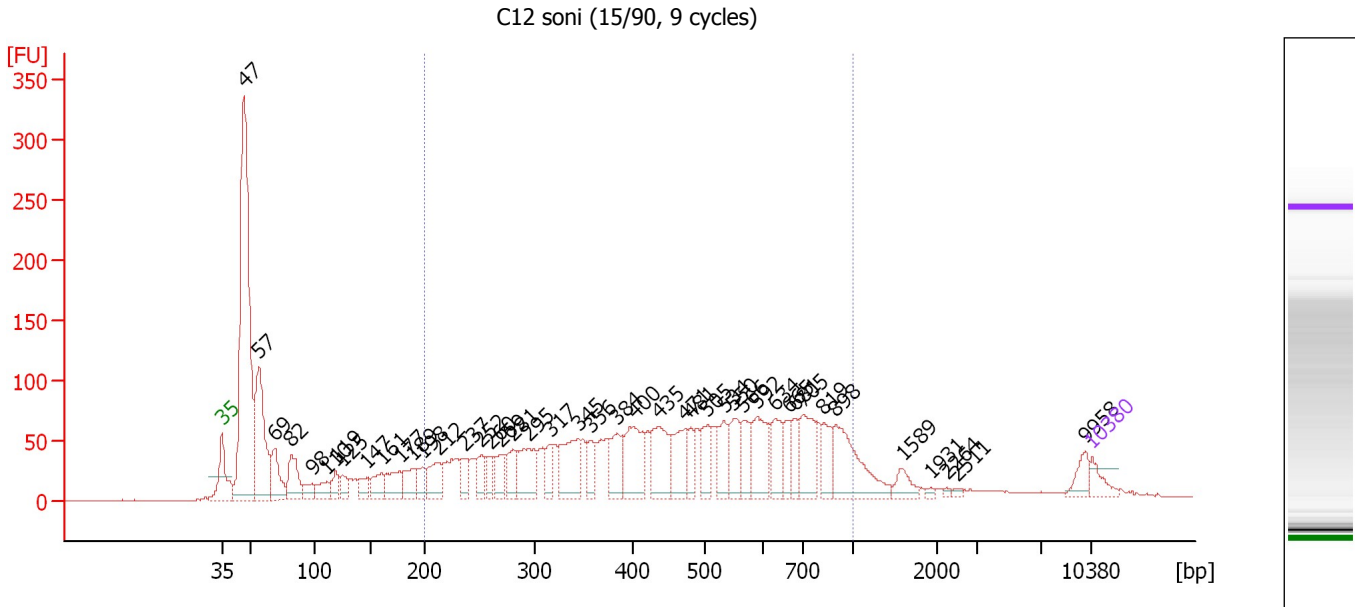
Region table for sample 2 : C13 soni (15/90, 9 cycles)

| From [bp] | Molarity [pmol/l] | Average Size [bp] | Conc. [pg/µl] | To [bp] | Corr. Area | % of Total | Size distribution in CV [%] | Color |
|-----------|-------------------|-------------------|---------------|---------|------------|------------|-----------------------------|---|
| 200 | 13,548.8 | 346 | 2,700.92 | 1,000 | 1,141.6 | 39 | 35.1 |  |

Assay Class: High Sensitivity DNA Assay
 Data Path: C:\...ents and Settings\Bioanalyzer\2012-02-15\2012-02-15_001.xad

Created: 2/15/2012 9:18:26 AM
 Modified: 2/15/2012 11:14:46 AM

Electropherogram Summary Continued ...



Overall Results for sample 3 : C12 soni (15/90, 9 cycles)

Number of peaks found: 44 Corr. Area 1: 2,345.7
 Noise: 0.7

Peak table for sample 3 : C12 soni (15/90, 9 cycles)

| Peak | Size [bp] | Conc. [pg/μl] | Molarity [pmol/l] | Observations |
|------|-----------|---------------|-------------------|--------------|
| 1 | 35 | 125.00 | 5,411.3 | Lower Marker |
| 2 | 47 | 2,938.75 | 95,425.8 | |
| 3 | 57 | 978.61 | 25,934.9 | |
| 4 | 69 | 321.68 | 7,019.4 | |
| 5 | 82 | 317.58 | 5,889.9 | |
| 6 | 98 | 110.49 | 1,714.5 | |
| 7 | 110 | 142.37 | 1,957.3 | |
| 8 | 119 | 123.58 | 1,575.1 | |
| 9 | 125 | 109.70 | 1,333.4 | |
| 10 | 147 | 132.59 | 1,368.6 | |
| 11 | 161 | 176.23 | 1,660.0 | |
| 12 | 177 | 210.85 | 1,806.1 | |
| 13 | 189 | 188.08 | 1,511.4 | |
| 14 | 198 | 133.31 | 1,021.2 | |
| 15 | 212 | 247.17 | 1,766.7 | |
| 16 | 237 | 138.16 | 883.3 | |
| 17 | 252 | 157.89 | 950.4 | |
| 18 | 260 | 111.57 | 651.3 | |
| 19 | 269 | 182.04 | 1,023.9 | |
| 20 | 281 | 191.43 | 1,033.5 | |
| 21 | 295 | 337.26 | 1,730.1 | |
| 22 | 317 | 121.28 | 579.0 | |
| 23 | 345 | 372.01 | 1,635.7 | |
| 24 | 356 | 128.09 | 544.6 | |
| 25 | 384 | 244.85 | 967.2 | |
| 26 | 400 | 395.19 | 1,496.4 | |

Assay Class: High Sensitivity DNA Assay
 Data Path: C:\...ents and Settings\Bioanalyzer\2012-02-15\2012-02-15_001.xad


Created: 2/15/2012 9:18:26 AM
 Modified: 2/15/2012 11:14:46 AM

Electropherogram Summary Continued ...

... Peak table for sample 3 : C12 soni (15/90, 9 cycles)

| Peak | Size [bp] | Conc. [pg/μl] | Molarity [pmol/l] | Observations |
|------|-----------|---------------|-------------------|--------------|
| 27 | 435 | 366.22 | 1,276.4 | |
| 28 | 471 | 291.87 | 939.3 | |
| 29 | 481 | 122.49 | 386.2 | |
| 30 | 505 | 180.51 | 541.8 | |
| 31 | 534 | 216.56 | 614.9 | |
| 32 | 550 | 230.18 | 633.8 | |
| 33 | 566 | 157.77 | 422.3 | |
| 34 | 592 | 316.01 | 808.7 | |
| 35 | 634 | 223.35 | 534.1 | |
| 36 | 665 | 124.72 | 284.0 | |
| 37 | 681 | 118.86 | 264.4 | |
| 38 | 705 | 296.42 | 636.7 | |
| 39 | 819 | 165.58 | 306.4 | |
| 40 | 898 | 451.43 | 761.9 | |
| 41 | 1,589 | 82.21 | 78.4 | |
| 42 | 1,931 | 14.96 | 11.7 | |
| 43 | 2,264 | 9.54 | 6.4 | |
| 44 | 2,511 | 13.72 | 8.3 | |
| 45 | 9,958 | 84.53 | 12.9 | |
| 46 | ▶ 10,380 | 75.00 | 10.9 | Upper Marker |

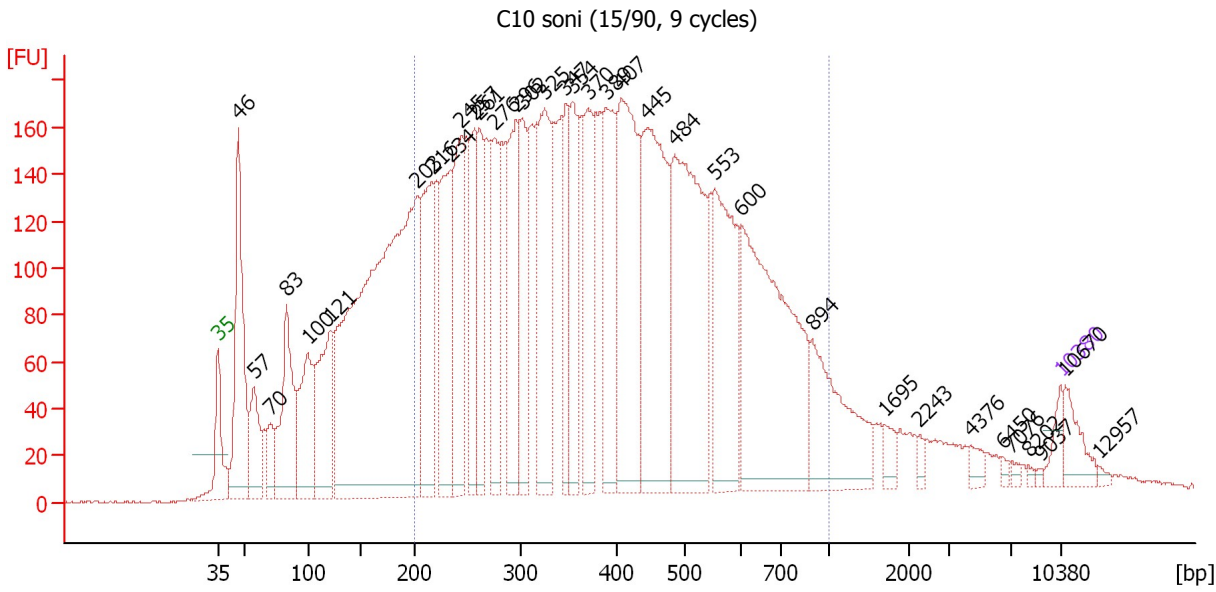
Region table for sample 3 : C12 soni (15/90, 9 cycles)

| From [bp] | Molarity [pmol/l] | Average Size [bp] | Conc. [pg/μl] | To [bp] | Corr. Area | % of Total | Size distribution in CV [%] | Color |
|-----------|-------------------|-------------------|---------------|---------|------------|------------|-----------------------------|---|
| 200 | 27,894.6 | 489 | 7,161.32 | 1,000 | 2,345.7 | 59 | 39.1 |  |

Assay Class: High Sensitivity DNA Assay
 Data Path: C:\...ents and Settings\Bioanalyzer\2012-02-15\2012-02-15_001.xad

Created: 2/15/2012 9:18:26 AM
 Modified: 2/15/2012 11:14:46 AM

Electropherogram Summary Continued ...



Overall Results for sample 4 : C10 soni (15/90, 9 cycles)

Number of peaks found: 35 Corr. Area 1: 6,449.8
 Noise: 0.8

Peak table for sample 4 : C10 soni (15/90, 9 cycles)


| Peak | Size [bp] | Conc. [pg/μl] | Molarity [pmol/l] | Observations |
|------|-----------|---------------|-------------------|--------------|
| 1 | 35 | 125.00 | 5,411.3 | Lower Marker |
| 2 | 46 | 1,222.49 | 39,888.9 | |
| 3 | 57 | 408.53 | 10,814.2 | |
| 4 | 70 | 220.69 | 4,755.2 | |
| 5 | 83 | 827.91 | 15,041.1 | |
| 6 | 100 | 686.47 | 10,416.2 | |
| 7 | 121 | 822.71 | 10,285.5 | |
| 8 | 203 | 4,604.10 | 34,414.8 | |
| 9 | 216 | 941.69 | 6,594.3 | |
| 10 | 234 | 902.27 | 5,839.9 | |
| 11 | 245 | 837.76 | 5,186.7 | |
| 12 | 257 | 538.18 | 3,174.4 | |
| 13 | 261 | 494.64 | 2,866.7 | |
| 14 | 276 | 753.58 | 4,142.7 | |
| 15 | 296 | 774.13 | 3,957.6 | |
| 16 | 302 | 565.90 | 2,838.1 | |
| 17 | 325 | 949.72 | 4,424.2 | |
| 18 | 347 | 427.61 | 1,865.6 | |
| 19 | 354 | 518.13 | 2,214.8 | |
| 20 | 370 | 677.36 | 2,770.6 | |
| 21 | 389 | 770.38 | 2,999.4 | |
| 22 | 407 | 1,308.44 | 4,868.1 | |
| 23 | 445 | 1,425.92 | 4,852.1 | |
| 24 | 484 | 1,573.39 | 4,924.7 | |
| 25 | 553 | 926.57 | 2,538.0 | |
| 26 | 600 | 1,614.86 | 4,077.1 | |

Assay Class: High Sensitivity DNA Assay
 Data Path: C:\...ents and Settings\Bioanalyzer\2012-02-15\2012-02-15_001.xad


Created: 2/15/2012 9:18:26 AM
 Modified: 2/15/2012 11:14:46 AM

Electropherogram Summary Continued ...

... Peak table for sample 4 : C10 soni (15/90, 9 cycles)

| Peak | Size [bp] | Conc. [pg/μl] | Molarity [pmol/l] | Observations |
|------|--|---------------|-------------------|--------------|
| 27 | 894 | 617.85 | 1,046.6 | |
| 28 | 1,695 | 64.59 | 57.7 | |
| 29 | 2,243 | 28.18 | 19.0 | |
| 30 | 4,376 | 47.60 | 16.5 | |
| 31 | 6,450 | 19.20 | 4.5 | |
| 32 | 7,076 | 17.01 | 3.6 | |
| 33 | 8,202 | 11.85 | 2.2 | |
| 34 | 9,037 | 8.50 | 1.4 | |
| 35 |  10,380 | 75.00 | 10.9 | Upper Marker |
| 36 | 10,670 | 0.00 | 0.0 | |
| 37 | 12,957 | 0.00 | 0.0 | |

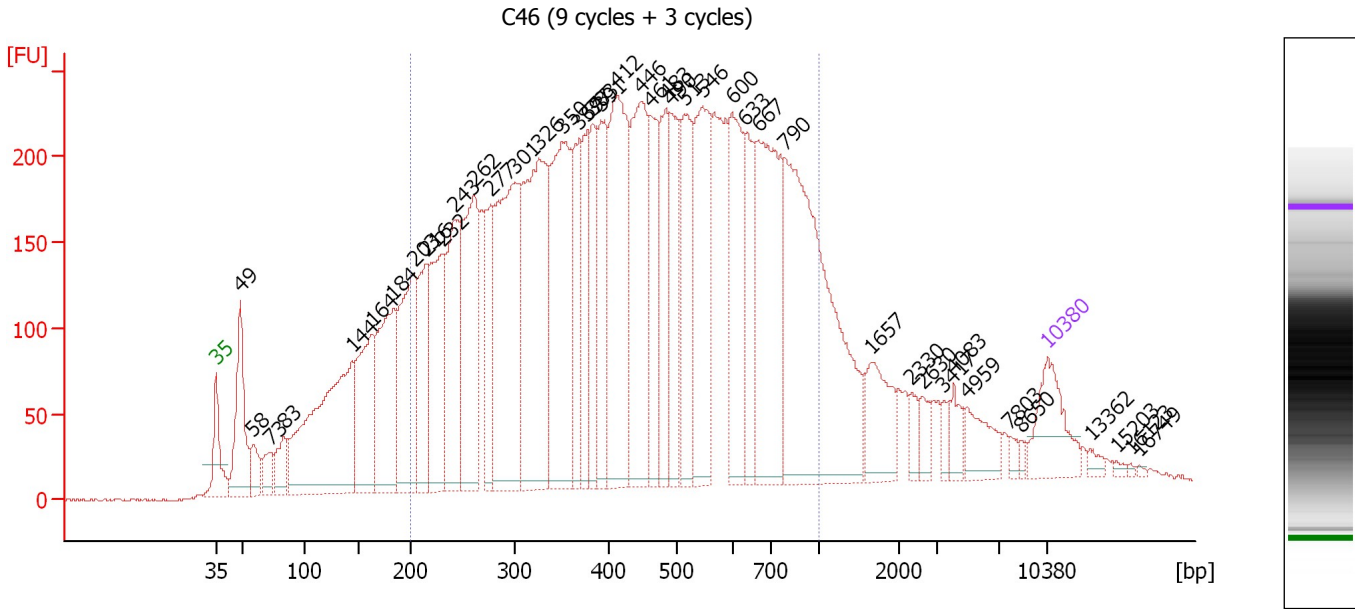
Region table for sample 4 : C10 soni (15/90, 9 cycles)

| From [bp] | Molarity [pmol/l] | Average Size [bp] | Conc. [pg/μl] | To [bp] | Corr. Area | % of Total | Size distribution in CV [%] | Color |
|-----------|-------------------|-------------------|---------------|---------|------------|------------|-----------------------------|---|
| 200 | 90,081.4 | 416 | 20,359.25 | 1,000 | 6,449.8 | 70 | 39.2 |  |

Assay Class: High Sensitivity DNA Assay
 Data Path: C:\...ents and Settings\Bioanalyzer\2012-02-15\2012-02-15_001.xad

Created: 2/15/2012 9:18:26 AM
 Modified: 2/15/2012 11:14:46 AM

Electropherogram Summary Continued ...



Overall Results for sample 5 : C46 (9 cycles + 3 cycles)

Number of peaks found: 43 Corr. Area 1: 8,784.6
 Noise: 0.8

Peak table for sample 5 : C46 (9 cycles + 3 cycles)

| Peak | Size [bp] | Conc. [pg/μl] | Molarity [pmol/l] | Observations |
|------|-----------|---------------|-------------------|--------------|
| 1 | 35 | 125.00 | 5,411.3 | Lower Marker |
| 2 | 49 | 191.14 | 5,942.5 | |
| 3 | 58 | 51.29 | 1,328.5 | |
| 4 | 73 | 46.94 | 973.8 | |
| 5 | 83 | 65.15 | 1,191.0 | |
| 6 | 144 | 500.91 | 5,258.0 | |
| 7 | 164 | 219.43 | 2,032.0 | |
| 8 | 184 | 268.78 | 2,213.7 | |
| 9 | 203 | 281.29 | 2,096.2 | |
| 10 | 216 | 153.38 | 1,077.7 | |
| 11 | 232 | 222.91 | 1,455.3 | |
| 12 | 243 | 248.88 | 1,552.7 | |
| 13 | 262 | 311.20 | 1,800.7 | |
| 14 | 277 | 125.61 | 686.4 | |
| 15 | 301 | 431.48 | 2,172.2 | |
| 16 | 326 | 435.42 | 2,023.1 | |
| 17 | 350 | 369.29 | 1,598.1 | |
| 18 | 369 | 114.82 | 472.0 | |
| 19 | 377 | 124.11 | 498.9 | |
| 20 | 383 | 108.36 | 429.2 | |
| 21 | 391 | 156.62 | 607.1 | |
| 22 | 412 | 340.89 | 1,254.9 | |
| 23 | 446 | 281.53 | 955.9 | |
| 24 | 461 | 148.06 | 486.4 | |
| 25 | 483 | 146.78 | 460.2 | |
| 26 | 490 | 137.77 | 426.4 | |

Assay Class: High Sensitivity DNA Assay
 Data Path: C:\...ents and Settings\Bioanalyzer\2012-02-15\2012-02-15_001.xad


Created: 2/15/2012 9:18:26 AM
 Modified: 2/15/2012 11:14:46 AM

Electropherogram Summary Continued ...

... Peak table for sample 5 : C46 (9 cycles + 3 cycles)

| Peak | Size [bp] | Conc. [pg/μl] | Molarity [pmol/l] | Observations |
|------|-----------|---------------|-------------------|--------------|
| 27 | 513 | 177.69 | 524.5 | |
| 28 | 546 | 242.67 | 673.0 | |
| 29 | 600 | 186.17 | 470.3 | |
| 30 | 633 | 122.88 | 294.2 | |
| 31 | 667 | 316.45 | 718.4 | |
| 32 | 790 | 549.41 | 1,053.1 | |
| 33 | 1,657 | 82.47 | 75.4 | |
| 34 | 2,330 | 19.89 | 12.9 | |
| 35 | 2,630 | 21.80 | 12.6 | |
| 36 | 3,417 | 16.10 | 7.1 | |
| 37 | 4,083 | 23.62 | 8.8 | |
| 38 | 4,959 | 47.32 | 14.5 | |
| 39 | 7,803 | 8.78 | 1.7 | |
| 40 | 8,650 | 5.49 | 1.0 | |
| 41 | 10,380 | 75.00 | 10.9 | Upper Marker |
| 42 | 13,362 | 0.00 | 0.0 | |
| 43 | 15,203 | 0.00 | 0.0 | |
| 44 | 16,123 | 0.00 | 0.0 | |
| 45 | 16,749 | 0.00 | 0.0 | |

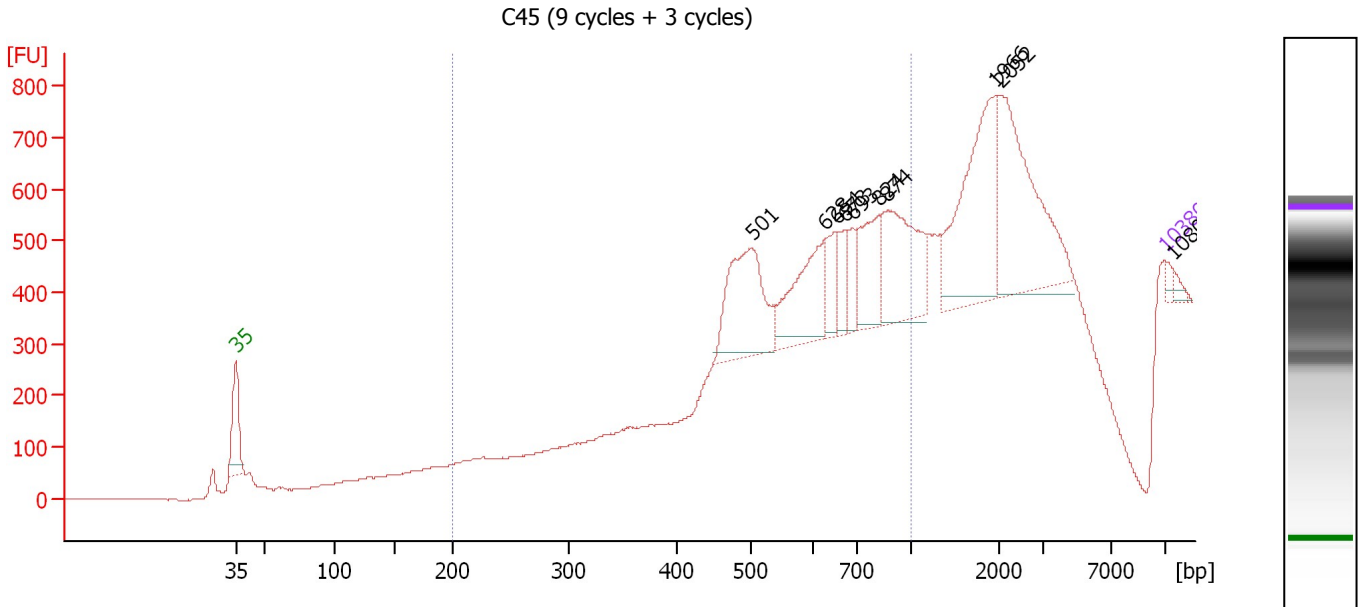
Region table for sample 5 : C46 (9 cycles + 3 cycles)

| From [bp] | Molarity [pmol/l] | Average Size [bp] | Conc. [pg/μl] | To [bp] | Corr. Area | % of Total | Size distribution in CV [%] | Color |
|-----------|-------------------|-------------------|---------------|---------|------------|------------|-----------------------------|---|
| 200 | 23,462.9 | 464 | 5,767.74 | 1,000 | 8,784.6 | 75 | 39.7 |  |

Assay Class: High Sensitivity DNA Assay
 Data Path: C:\...ents and Settings\Bioanalyzer\2012-02-15\2012-02-15_001.xad

Created: 2/15/2012 9:18:26 AM
 Modified: 2/15/2012 11:14:46 AM

Electropherogram Summary Continued ...



Overall Results for sample 6 : C45 (9 cycles + 3 cycles)

Number of peaks found: 10 Corr. Area 1: 3,747.6
 Noise: 0.7

Peak table for sample 6 : C45 (9 cycles + 3 cycles)

| Peak | Size [bp] | Conc. [pg/μl] | Molarity [pmol/l] | Observations |
|------|-----------|---------------|-------------------|--------------|
| 1 | 35 | 125.00 | 5,411.3 | Lower Marker |
| 2 | 501 | 1,153.99 | 3,490.6 | |
| 3 | 628 | 783.20 | 1,888.7 | |
| 4 | 654 | 239.28 | 554.1 | |
| 5 | 673 | 230.45 | 519.0 | |
| 6 | 693 | 217.46 | 475.8 | |
| 7 | 824 | 518.65 | 953.9 | |
| 8 | 874 | 905.23 | 1,569.3 | |
| 9 | 1,966 | 1,232.88 | 950.4 | |
| 10 | 2,052 | 1,221.74 | 902.0 | |
| 11 | 10,380 | 75.00 | 10.9 | Upper Marker |
| 12 | 10,808 | 0.00 | 0.0 | |

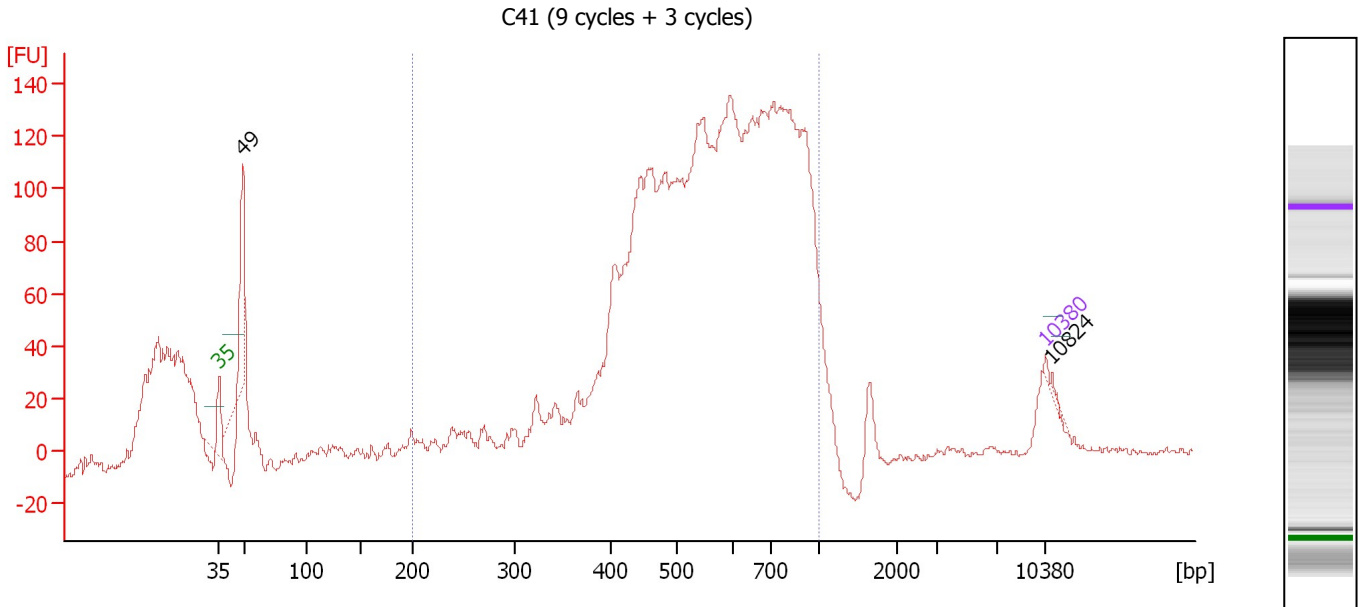
Region table for sample 6 : C45 (9 cycles + 3 cycles)

| From [bp] | Molarity [pmol/l] | Average Size [bp] | Conc. [pg/μl] | To [bp] | Corr. Area | % of Total | Size distribution in CV [%] | Color |
|-----------|-------------------|-------------------|---------------|---------|------------|------------|-----------------------------|-------|
| 200 | 11,655.6 | 662 | 4,767.90 | 1,000 | 3,747.6 | 51 | 23.1 | Blue |

Assay Class: High Sensitivity DNA Assay
 Data Path: C:\...ents and Settings\Bioanalyzer\2012-02-15\2012-02-15_001.xad

Created: 2/15/2012 9:18:26 AM
 Modified: 2/15/2012 11:14:46 AM

Electropherogram Summary Continued ...



Setpoint Deviations for sample 7 : C41 (9 cycles + 3 cycles)

Height Threshold [FU] : 20 Width Threshold [s] : 10

Overall Results for sample 7 : C41 (9 cycles + 3 cycles)

Number of peaks found: 2 Corr. Area 1: 2,770.6
 Noise: 1.3

Peak table for sample 7 : C41 (9 cycles + 3 cycles)

| Peak | Size [bp] | Conc. [pg/μl] | Molarity [pmol/l] | Observations |
|------|-----------|---------------|-------------------|--------------|
| 1 | 35 | 125.00 | 5,411.3 | Lower Marker |
| 2 | 49 | 1,593.90 | 49,483.6 | |
| 3 | 10,380 | 75.00 | 10.9 | Upper Marker |
| 4 | 10,824 | 0.00 | 0.0 | |

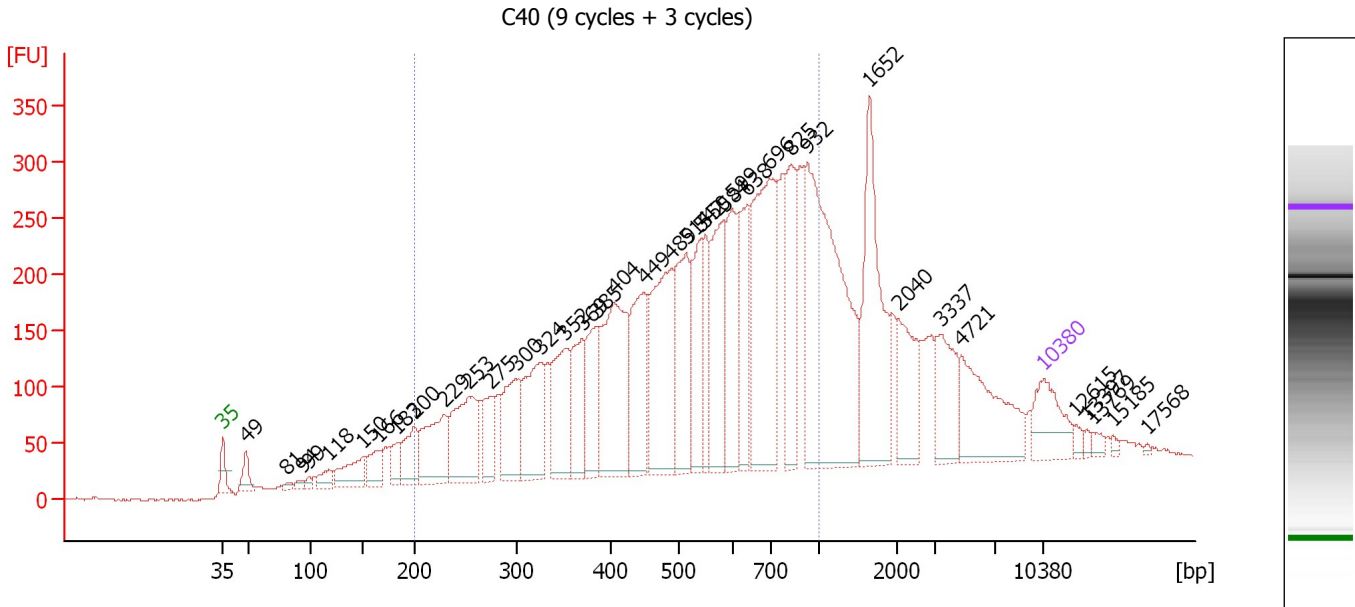
Region table for sample 7 : C41 (9 cycles + 3 cycles)

| From [bp] | Molarity [pmol/l] | Average Size [bp] | Conc. [pg/μl] | To [bp] | Corr. Area | % of Total | Size distribution in CV [%] | Color |
|-----------|-------------------|-------------------|---------------|---------|------------|------------|-----------------------------|-------|
| 200 | 123,429.7 | 584 | 41,311.81 | 1,000 | 2,770.6 | 74 | 29.4 | Blue |

Assay Class: High Sensitivity DNA Assay
 Data Path: C:\...ents and Settings\Bioanalyzer\2012-02-15\2012-02-15_001.xad

Created: 2/15/2012 9:18:26 AM
 Modified: 2/15/2012 11:14:46 AM

Electropherogram Summary Continued ...



Overall Results for sample 8 : C40 (9 cycles + 3 cycles)

Number of peaks found: 38 Corr. Area 1: 6,628.7
 Noise: 1.1

Peak table for sample 8 : C40 (9 cycles + 3 cycles)

| Peak | Size [bp] | Conc. [pg/μl] | Molarity [pmol/l] | Observations |
|------|-----------|---------------|-------------------|--------------|
| 1 | 35 | 125.00 | 5,411.3 | Lower Marker |
| 2 | 49 | 46.89 | 1,462.4 | |
| 3 | 81 | 8.85 | 164.9 | |
| 4 | 94 | 12.31 | 197.8 | |
| 5 | 99 | 10.24 | 157.3 | |
| 6 | 118 | 33.92 | 436.3 | |
| 7 | 150 | 85.36 | 862.7 | |
| 8 | 166 | 62.27 | 567.0 | |
| 9 | 183 | 46.66 | 385.6 | |
| 10 | 200 | 84.17 | 638.2 | |
| 11 | 229 | 169.04 | 1,116.3 | |
| 12 | 253 | 205.83 | 1,231.1 | |
| 13 | 275 | 93.56 | 515.2 | |
| 14 | 300 | 142.39 | 720.2 | |
| 15 | 324 | 190.77 | 891.0 | |
| 16 | 352 | 175.91 | 758.2 | |
| 17 | 369 | 124.48 | 511.0 | |
| 18 | 385 | 146.46 | 576.6 | |
| 19 | 404 | 297.33 | 1,114.6 | |
| 20 | 449 | 197.54 | 666.9 | |
| 21 | 489 | 284.36 | 880.4 | |
| 22 | 514 | 193.27 | 569.2 | |
| 23 | 542 | 135.94 | 380.1 | |
| 24 | 550 | 87.15 | 240.2 | |
| 25 | 584 | 197.86 | 513.2 | |
| 26 | 599 | 178.52 | 451.6 | |

Assay Class: High Sensitivity DNA Assay
 Data Path: C:\...ents and Settings\Bioanalyzer\2012-02-15\2012-02-15_001.xad


Created: 2/15/2012 9:18:26 AM
 Modified: 2/15/2012 11:14:46 AM

Electropherogram Summary Continued ...

... Peak table for sample 8 : C40 (9 cycles + 3 cycles)

| Peak | Size [bp] | Conc. [pg/μl] | Molarity [pmol/l] | Observations |
|------|-----------|---------------|-------------------|--------------|
| 27 | 638 | 133.06 | 316.2 | |
| 28 | 696 | 369.86 | 804.7 | |
| 29 | 825 | 164.77 | 302.6 | |
| 30 | 932 | 555.69 | 903.6 | |
| 31 | 1,652 | 254.86 | 233.8 | |
| 32 | 2,040 | 104.73 | 77.8 | |
| 33 | 3,337 | 103.36 | 46.9 | |
| 34 | 4,721 | 157.85 | 50.7 | |
| 35 | 10,380 | 75.00 | 10.9 | Upper Marker |
| 36 | 12,615 | 0.00 | 0.0 | |
| 37 | 13,397 | 0.00 | 0.0 | |
| 38 | 13,769 | 0.00 | 0.0 | |
| 39 | 15,185 | 0.00 | 0.0 | |
| 40 | 17,568 | 0.00 | 0.0 | |

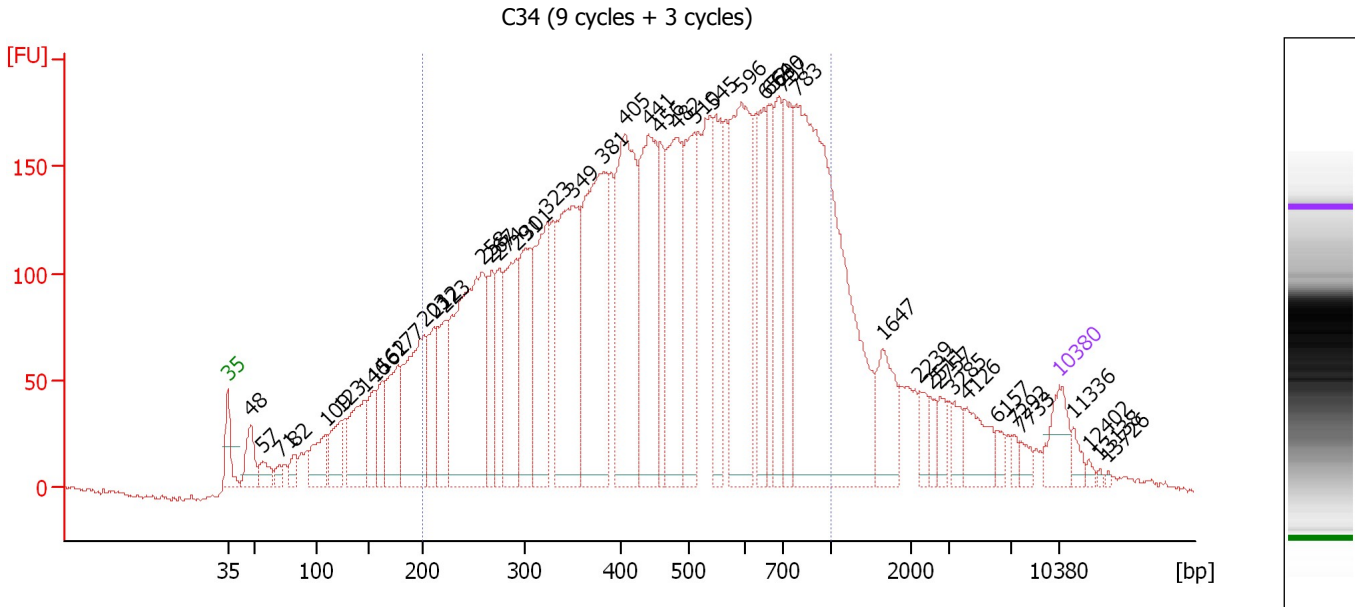
Region table for sample 8 : C40 (9 cycles + 3 cycles)

| From [bp] | Molarity [pmol/l] | Average Size [bp] | Conc. [pg/μl] | To [bp] | Corr. Area | % of Total | Size distribution in CV [%] | Color |
|-----------|-------------------|-------------------|---------------|---------|------------|------------|-----------------------------|---|
| 200 | 14,525.3 | 540 | 4,137.17 | 1,000 | 6,628.7 | 70 | 37.0 |  |

Assay Class: High Sensitivity DNA Assay
 Data Path: C:\...ents and Settings\Bioanalyzer\2012-02-15\2012-02-15_001.xad

Created: 2/15/2012 9:18:26 AM
 Modified: 2/15/2012 11:14:46 AM

Electropherogram Summary Continued ...



Overall Results for sample 9 : C34 (9 cycles + 3 cycles)

Number of peaks found: 46 Corr. Area 1: 6,296.4
 Noise: 1.0

Peak table for sample 9 : C34 (9 cycles + 3 cycles)


| Peak | Size [bp] | Conc. [pg/μl] | Molarity [pmol/l] | Observations |
|------|-----------|---------------|-------------------|--------------|
| 1 | 35 | 125.00 | 5,411.3 | Lower Marker |
| 2 | 48 | 113.25 | 3,544.5 | |
| 3 | 57 | 58.79 | 1,557.9 | |
| 4 | 71 | 27.00 | 577.3 | |
| 5 | 82 | 44.26 | 814.0 | |
| 6 | 109 | 130.02 | 1,799.8 | |
| 7 | 123 | 132.64 | 1,633.3 | |
| 8 | 146 | 217.55 | 2,254.8 | |
| 9 | 156 | 123.57 | 1,201.6 | |
| 10 | 162 | 103.82 | 968.5 | |
| 11 | 177 | 235.68 | 2,015.8 | |
| 12 | 203 | 431.66 | 3,228.8 | |
| 13 | 212 | 174.83 | 1,250.7 | |
| 14 | 223 | 207.96 | 1,412.5 | |
| 15 | 258 | 769.60 | 4,511.5 | |
| 16 | 267 | 173.15 | 981.9 | |
| 17 | 274 | 184.04 | 1,016.4 | |
| 18 | 291 | 317.55 | 1,651.8 | |
| 19 | 301 | 295.23 | 1,488.3 | |
| 20 | 323 | 367.89 | 1,726.4 | |
| 21 | 349 | 589.78 | 2,563.8 | |
| 22 | 381 | 639.00 | 2,541.8 | |
| 23 | 405 | 594.32 | 2,221.6 | |
| 24 | 441 | 499.01 | 1,715.6 | |
| 25 | 456 | 168.53 | 559.5 | |
| 26 | 482 | 435.85 | 1,371.3 | |

Assay Class: High Sensitivity DNA Assay
 Data Path: C:\...ents and Settings\Bioanalyzer\2012-02-15\2012-02-15_001.xad


Created: 2/15/2012 9:18:26 AM
 Modified: 2/15/2012 11:14:46 AM

Electropherogram Summary Continued ...

... Peak table for sample 9 : C34 (9 cycles + 3 cycles)

| Peak | Size [bp] | Conc. [pg/µl] | Molarity [pmol/l] | Observations |
|------|--|---------------|-------------------|--------------|
| 27 | 510 | 341.75 | 1,014.8 | |
| 28 | 545 | 239.52 | 665.7 | |
| 29 | 596 | 561.56 | 1,428.5 | |
| 30 | 652 | 191.13 | 444.3 | |
| 31 | 664 | 169.77 | 387.3 | |
| 32 | 690 | 196.98 | 432.3 | |
| 33 | 707 | 256.19 | 549.2 | |
| 34 | 783 | 1,238.03 | 2,396.7 | |
| 35 | 1,647 | 122.67 | 112.9 | |
| 36 | 2,239 | 37.08 | 25.1 | |
| 37 | 2,511 | 30.73 | 18.5 | |
| 38 | 2,757 | 33.88 | 18.6 | |
| 39 | 3,285 | 39.89 | 18.4 | |
| 40 | 4,126 | 82.83 | 30.4 | |
| 41 | 6,157 | 23.09 | 5.7 | |
| 42 | 7,292 | 13.30 | 2.8 | |
| 43 | 7,733 | 21.06 | 4.1 | |
| 44 |  10,380 | 75.00 | 10.9 | Upper Marker |
| 45 | 11,336 | 0.00 | 0.0 | |
| 46 | 12,402 | 0.00 | 0.0 | |
| 47 | 13,138 | 0.00 | 0.0 | |
| 48 | 13,726 | 0.00 | 0.0 | |

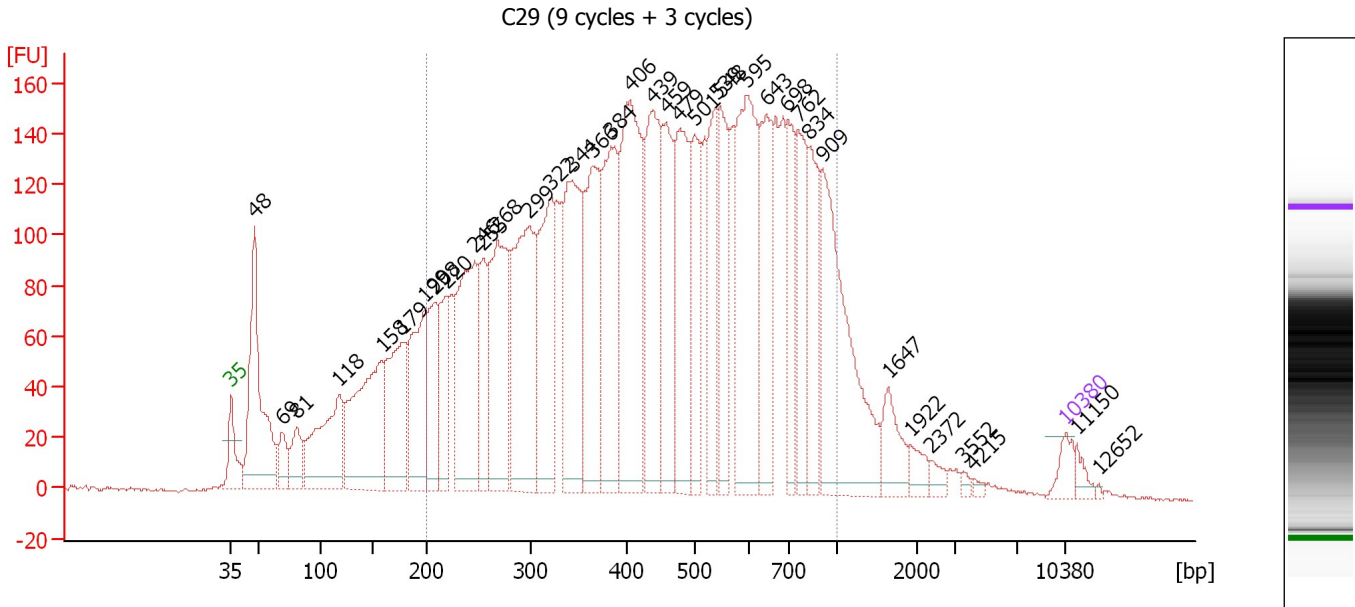
Region table for sample 9 : C34 (9 cycles + 3 cycles)

| From [bp] | Molarity [pmol/l] | Average Size [bp] | Conc. [pg/µl] | To [bp] | Corr. Area | % of Total | Size distribution in CV [%] | Color |
|-----------|-------------------|-------------------|---------------|---------|------------|------------|-----------------------------|---|
| 200 | 35,643.1 | 493 | 9,247.16 | 1,000 | 6,296.4 | 77 | 39.1 |  |

Assay Class: High Sensitivity DNA Assay
 Data Path: C:\...ents and Settings\Bioanalyzer\2012-02-15\2012-02-15_001.xad

Created: 2/15/2012 9:18:26 AM
 Modified: 2/15/2012 11:14:46 AM

Electropherogram Summary Continued ...



Overall Results for sample 10 : C29 (9 cycles + 3 cycles)

Number of peaks found: 37 Corr. Area 1: 5,573.7
 Noise: 0.7

Peak table for sample 10 : C29 (9 cycles + 3 cycles)

| Peak | Size [bp] | Conc. [pg/μl] | Molarity [pmol/l] | Observations |
|------|-----------|---------------|-------------------|--------------|
| 1 | 35 | 125.00 | 5,411.3 | Lower Marker |
| 2 | 48 | 1,225.61 | 38,392.9 | |
| 3 | 69 | 174.95 | 3,817.4 | |
| 4 | 81 | 240.03 | 4,469.7 | |
| 5 | 118 | 794.52 | 10,185.8 | |
| 6 | 158 | 1,152.64 | 11,061.2 | |
| 7 | 179 | 809.37 | 6,864.5 | |
| 8 | 199 | 766.70 | 5,840.4 | |
| 9 | 208 | 433.29 | 3,154.8 | |
| 10 | 220 | 434.18 | 2,992.3 | |
| 11 | 246 | 1,063.41 | 6,538.2 | |
| 12 | 255 | 452.22 | 2,685.7 | |
| 13 | 268 | 968.17 | 5,465.2 | |
| 14 | 299 | 1,229.61 | 6,239.8 | |
| 15 | 322 | 878.89 | 4,138.0 | |
| 16 | 344 | 1,024.21 | 4,517.7 | |
| 17 | 366 | 931.75 | 3,859.9 | |
| 18 | 384 | 871.60 | 3,438.2 | |
| 19 | 406 | 1,293.89 | 4,830.9 | |
| 20 | 439 | 900.99 | 3,111.6 | |
| 21 | 459 | 648.67 | 2,140.8 | |
| 22 | 479 | 814.42 | 2,577.8 | |
| 23 | 501 | 510.53 | 1,544.7 | |
| 24 | 539 | 484.69 | 1,361.3 | |
| 25 | 548 | 506.28 | 1,399.4 | |
| 26 | 595 | 1,080.94 | 2,754.5 | |

Assay Class: High Sensitivity DNA Assay
 Data Path: C:\...ents and Settings\Bioanalyzer\2012-02-15\2012-02-15_001.xad


Created: 2/15/2012 9:18:26 AM
 Modified: 2/15/2012 11:14:46 AM

Electropherogram Summary Continued ...

... Peak table for sample 10 : C29 (9 cycles + 3 cycles)

| Peak | Size [bp] | Conc. [pg/μl] | Molarity [pmol/l] | Observations |
|------|-----------|---------------|-------------------|--------------|
| 27 | 643 | 584.34 | 1,376.5 | |
| 28 | 698 | 393.71 | 854.3 | |
| 29 | 762 | 475.94 | 946.9 | |
| 30 | 834 | 449.02 | 815.9 | |
| 31 | 909 | 1,097.63 | 1,828.7 | |
| 32 | 1,647 | 185.06 | 170.2 | |
| 33 | 1,922 | 74.81 | 59.0 | |
| 34 | 2,372 | 43.15 | 27.6 | |
| 35 | 3,552 | 18.43 | 7.9 | |
| 36 | 4,215 | 16.41 | 5.9 | |
| 37 | 10,380 | 75.00 | 10.9 | Upper Marker |
| 38 | 11,150 | 0.00 | 0.0 | |
| 39 | 12,652 | 0.00 | 0.0 | |

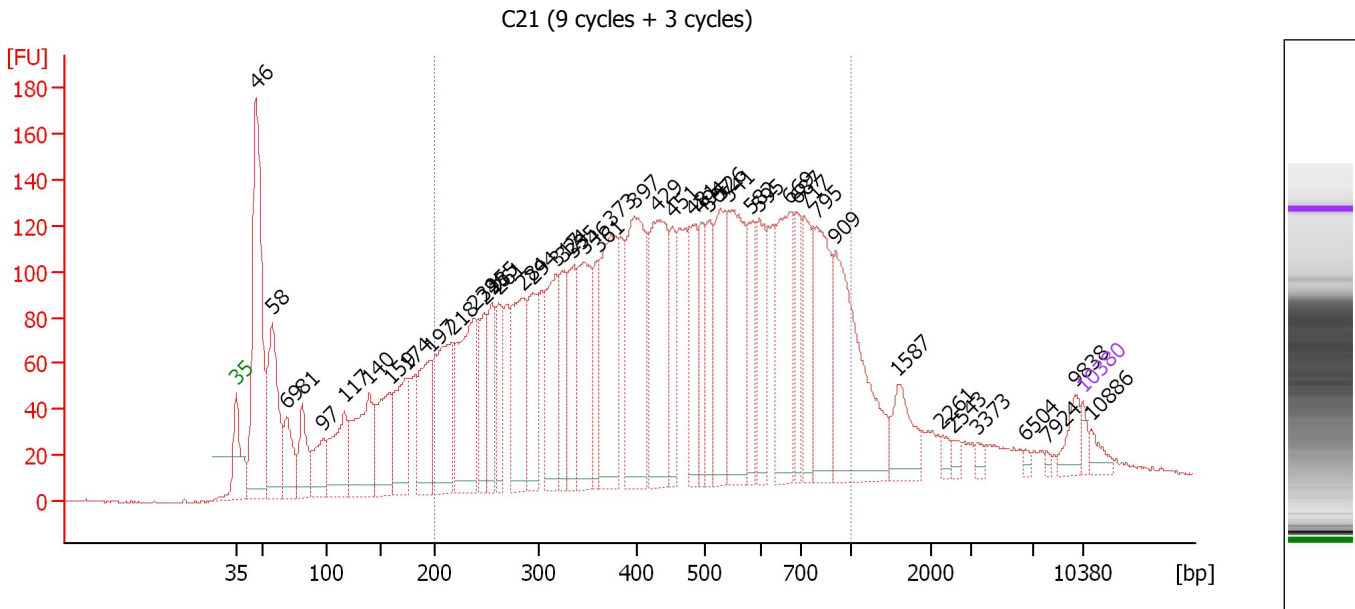
Region table for sample 10 : C29 (9 cycles + 3 cycles)

| From [bp] | Molarity [pmol/l] | Average Size [bp] | Conc. [pg/μl] | To [bp] | Corr. Area | % of Total | Size distribution in CV [%] | Color |
|-----------|-------------------|-------------------|---------------|---------|------------|------------|-----------------------------|---|
| 200 | 75,550.3 | 480 | 19,158.74 | 1,000 | 5,573.7 | 78 | 39.2 |  |

Assay Class: High Sensitivity DNA Assay
 Data Path: C:\...ents and Settings\Bioanalyzer\2012-02-15\2012-02-15_001.xad

Created: 2/15/2012 9:18:26 AM
 Modified: 2/15/2012 11:14:46 AM

Electropherogram Summary Continued ...



Overall Results for sample 11 : C21 (9 cycles + 3 cycles)

Number of peaks found: 46 Corr. Area 1: 4,516.3
 Noise: 0.4

Peak table for sample 11 : C21 (9 cycles + 3 cycles)

| Peak | Size [bp] | Conc. [pg/μl] | Molarity [pmol/l] | Observations |
|------|-----------|---------------|-------------------|--------------|
| 1 | 35 | 125.00 | 5,411.3 | Lower Marker |
| 2 | 46 | 3,283.65 | 107,973.3 | |
| 3 | 58 | 1,587.95 | 41,831.8 | |
| 4 | 69 | 630.63 | 13,877.8 | |
| 5 | 81 | 631.86 | 11,815.5 | |
| 6 | 97 | 504.95 | 7,855.1 | |
| 7 | 117 | 962.26 | 12,492.1 | |
| 8 | 140 | 1,221.40 | 13,223.7 | |
| 9 | 159 | 951.06 | 9,073.5 | |
| 10 | 174 | 997.32 | 8,670.3 | |
| 11 | 197 | 941.59 | 7,251.5 | |
| 12 | 218 | 1,472.81 | 10,242.6 | |
| 13 | 239 | 1,549.76 | 9,844.4 | |
| 14 | 248 | 690.42 | 4,216.5 | |
| 15 | 255 | 625.86 | 3,716.6 | |
| 16 | 261 | 582.69 | 3,380.1 | |
| 17 | 284 | 1,240.12 | 6,619.3 | |
| 18 | 294 | 886.74 | 4,570.8 | |
| 19 | 317 | 1,013.62 | 4,845.1 | |
| 20 | 324 | 668.13 | 3,128.7 | |
| 21 | 335 | 661.54 | 2,991.5 | |
| 22 | 346 | 1,144.25 | 5,010.3 | |
| 23 | 361 | 518.38 | 2,176.7 | |
| 24 | 373 | 1,425.25 | 5,782.7 | |
| 25 | 397 | 1,782.26 | 6,801.9 | |
| 26 | 429 | 1,611.49 | 5,691.7 | |

Assay Class: High Sensitivity DNA Assay
 Data Path: C:\...ents and Settings\Bioanalyzer\2012-02-15\2012-02-15_001.xad


Created: 2/15/2012 9:18:26 AM
 Modified: 2/15/2012 11:14:46 AM

Electropherogram Summary Continued ...

... Peak table for sample 11 : C21 (9 cycles + 3 cycles)

| Peak | Size [bp] | Conc. [pg/µl] | Molarity [pmol/l] | Observations |
|------|-----------|---------------|-------------------|--------------|
| 27 | 451 | 556.62 | 1,868.4 | |
| 28 | 481 | 706.55 | 2,226.9 | |
| 29 | 494 | 509.13 | 1,562.0 | |
| 30 | 507 | 581.56 | 1,739.0 | |
| 31 | 526 | 930.69 | 2,682.0 | |
| 32 | 541 | 1,392.92 | 3,900.9 | |
| 33 | 582 | 448.39 | 1,167.3 | |
| 34 | 595 | 639.62 | 1,627.8 | |
| 35 | 669 | 1,099.24 | 2,488.3 | |
| 36 | 687 | 451.22 | 995.2 | |
| 37 | 717 | 668.42 | 1,411.6 | |
| 38 | 795 | 1,105.47 | 2,106.4 | |
| 39 | 909 | 1,632.97 | 2,723.3 | |
| 40 | 1,587 | 398.45 | 380.4 | |
| 41 | 2,261 | 78.05 | 52.3 | |
| 42 | 2,543 | 60.89 | 36.3 | |
| 43 | 3,373 | 53.68 | 24.1 | |
| 44 | 6,504 | 33.36 | 7.8 | |
| 45 | 7,924 | 24.73 | 4.7 | |
| 46 | 9,838 | 177.08 | 27.3 | |
| 47 | 10,380 | 75.00 | 10.9 | Upper Marker |
| 48 | 10,886 | 0.00 | 0.0 | |

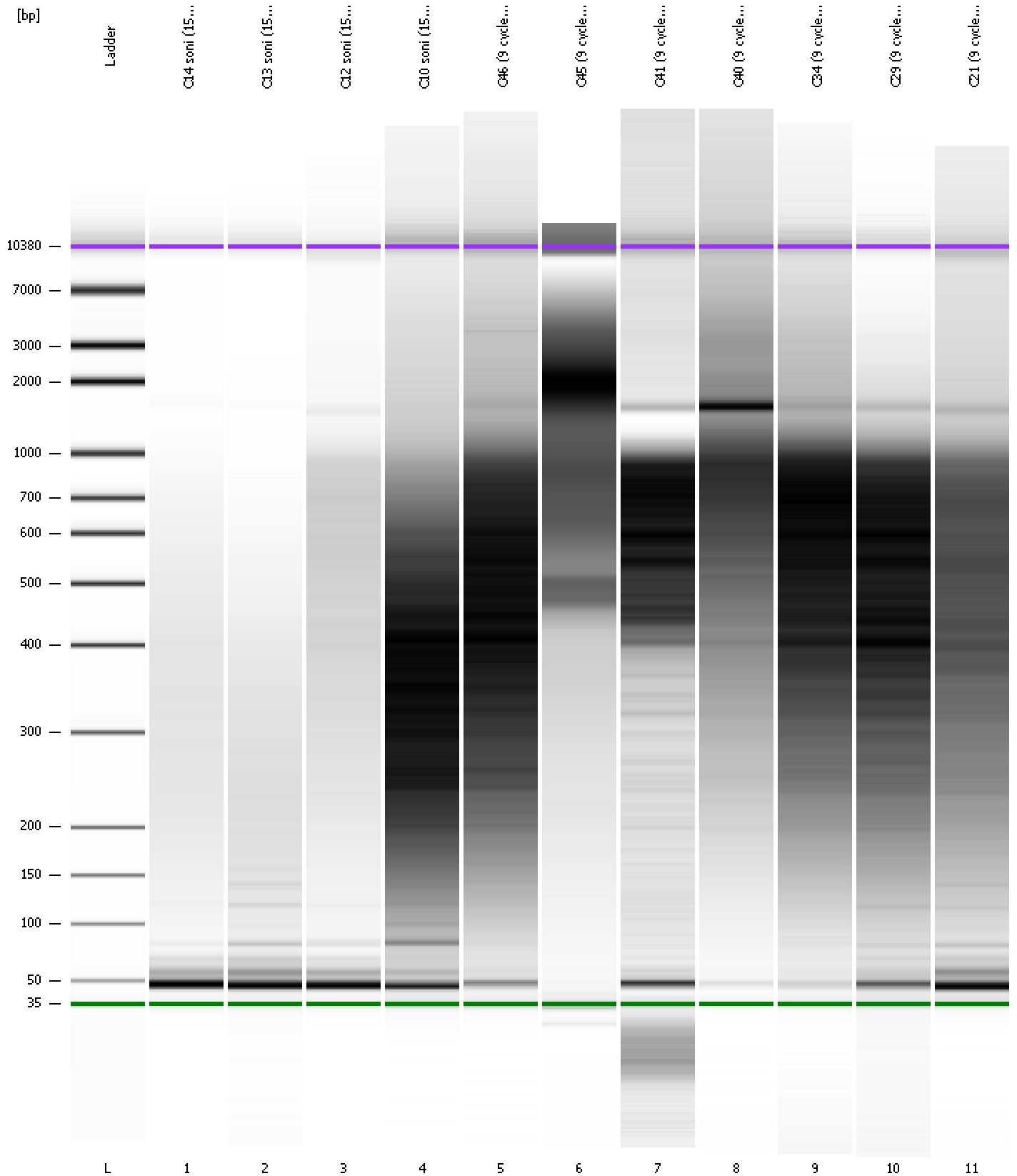
Region table for sample 11 : C21 (9 cycles + 3 cycles)

| From [bp] | Molarity [pmol/l] | Average Size [bp] | Conc. [pg/µl] | To [bp] | Corr. Area | % of Total | Size distribution in CV [%] | Color |
|-----------|-------------------|-------------------|---------------|---------|------------|------------|-----------------------------|---|
| 200 | 117,628.4 | 475 | 29,462.80 | 1,000 | 4,516.3 | 71 | 39.6 |  |

Assay Class: High Sensitivity DNA Assay
Data Path: C:\...ents and Settings\Bioanalyzer\2012-02-15\2012-02-15_001.xad

Created: 2/15/2012 9:18:26 AM
Modified: 2/15/2012 11:14:46 AM

Gel Image



Assay Class: High Sensitivity DNA Assay
 Data Path: C:\...ents and Settings\Bioanalyzer\2012-02-15\2012-02-15_001.xad

Created: 2/15/2012 9:18:26 AM
 Modified: 2/15/2012 11:14:46 AM

Run Logbook

| Description | Number | Source | Category | Sub Category | Time | Time Zone | User | Host |
|---|--------|------------|----------|--------------|----------------------|-------------------------------------|----------|----------|
| Run ended on port 1 (Number of wells acquired: 12) | | Instrument | Run | | 2/15/2012 9:59:41 AM | (GMT --08:00) Pacific Standard Time | UC Davis | D8XSMGH1 |
| Run started on port 1 (File: C:\Documents and Settings\Bioanalyzer\2012-02-15\2012-02-15_001.xad) | | Instrument | Run | | 2/15/2012 9:18:26 AM | (GMT --08:00) Pacific Standard Time | UC Davis | D8XSMGH1 |
| Product Number : G2938B | | Instrument | Run | | 2/15/2012 9:18:26 AM | (GMT --08:00) Pacific Standard Time | UC Davis | D8XSMGH1 |
| Name : | | Instrument | Run | | 2/15/2012 9:18:26 AM | (GMT --08:00) Pacific Standard Time | UC Davis | D8XSMGH1 |
| Vendor : Agilent Technologies | | Instrument | Run | | 2/15/2012 9:18:26 AM | (GMT --08:00) Pacific Standard Time | UC Davis | D8XSMGH1 |
| Serial# : DE13701086 | | Instrument | Run | | 2/15/2012 9:18:26 AM | (GMT --08:00) Pacific Standard Time | UC Davis | D8XSMGH1 |
| Firmware : C.01.069 | | Instrument | Run | | 2/15/2012 9:18:26 AM | (GMT --08:00) Pacific Standard Time | UC Davis | D8XSMGH1 |
| Cartridge : Electrode | | Instrument | Run | | 2/15/2012 9:18:26 AM | (GMT --08:00) Pacific Standard Time | UC Davis | D8XSMGH1 |