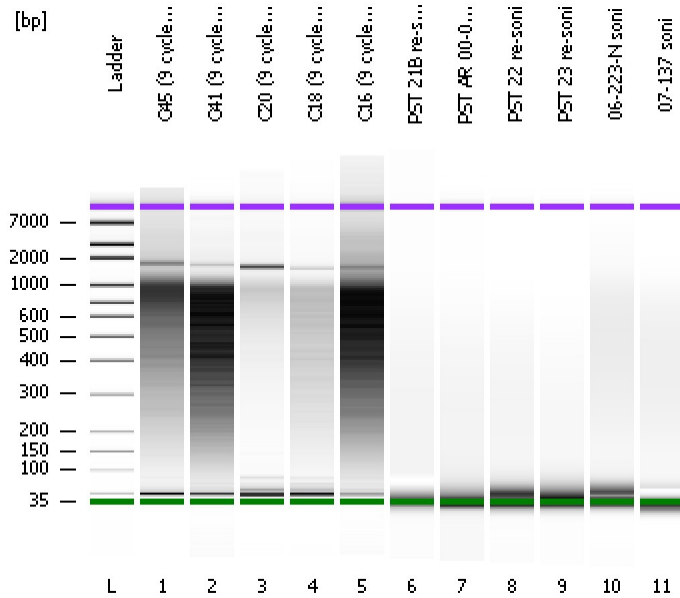


Assay Class: High Sensitivity DNA Assay  
Data Path: C:\...ents and Settings\Bioanalyzer\2012-02-15\2012-02-15\_002.xad

Created: 2/15/2012 10:13:17 AM  
Modified: 2/15/2012 11:08:02 AM

Electrophoresis File Run Summary



Instrument Information:

Instrument Name: DE13701086      Firmware: C.01.069  
Serial#: DE13701086      Type: G2938B

Assay Information:

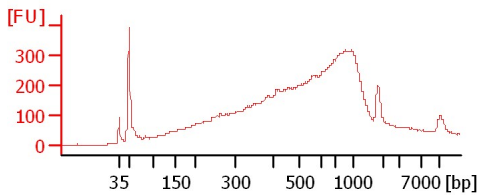
Assay Origin Path: C:\Program Files\Agilent\2100 bioanalyzer\2100 expert\assays\dsDNA\High Sensitivity DNA.xsy

Assay Class: High Sensitivity DNA Assay  
Version: 1.03  
Assay Comments: Copyright © 2003-2010 Agilent Technologies

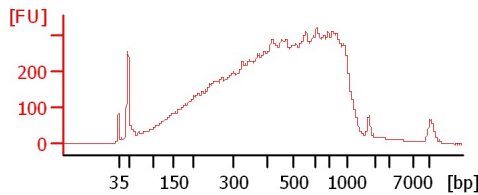
Chip Information:

Chip Lot #:   
Reagent Kit Lot #:   
Chip Comments:

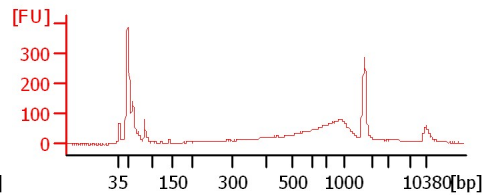
C45 (9 cycles + 3 cycles)



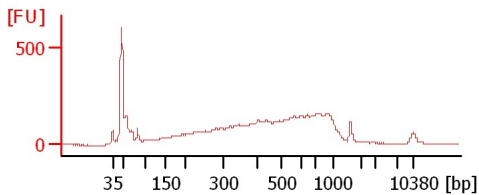
C41 (9 cycles + 3 cycles)



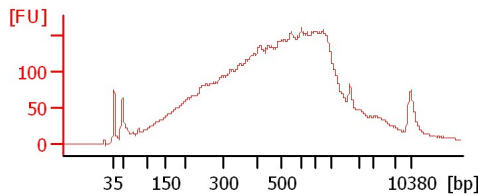
C20 (9 cycles + 3 cycles)



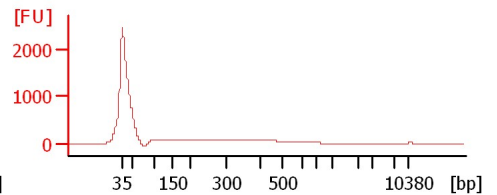
C18 (9 cycles + 3 cycles)



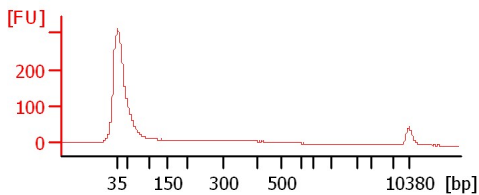
C16 (9 cycles + 3 cycles)



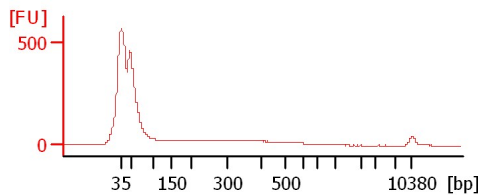
PST 21B re-soni



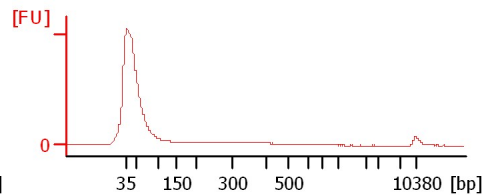
PST AR 00-05 soni



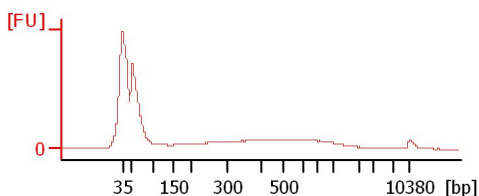
PST 22 re-soni



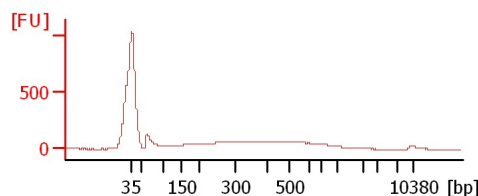
PST 23 re-soni



06-223-N soni



07-137 soni



Assay Class: High Sensitivity DNA Assay  
 Data Path: C:\...ents and Settings\Bioanalyzer\2012-02-15\2012-02-15\_002.xad

Created: 2/15/2012 10:13:17 AM  
 Modified: 2/15/2012 11:08:02 AM

**Electrophoresis File Run Summary (Chip Summary)**

Sample Name	Sample Comment	Rest. Digest	Status	Observation	Result Label	Result Color
C45 (9 cycles + 3 cycles)		<input type="checkbox"/>	✓			
C41 (9 cycles + 3 cycles)		<input type="checkbox"/>	✓			
C20 (9 cycles + 3 cycles)		<input type="checkbox"/>	✓			
C18 (9 cycles + 3 cycles)		<input type="checkbox"/>	✓			
C16 (9 cycles + 3 cycles)		<input type="checkbox"/>	✓			
PST 21B re-soni		<input type="checkbox"/>	✓			
PST AR 00-05 soni		<input type="checkbox"/>	✓			
PST 22 re-soni		<input type="checkbox"/>	✓			
PST 23 re-soni		<input type="checkbox"/>	✓			
06-223-N soni		<input type="checkbox"/>	✓			
07-137 soni		<input type="checkbox"/>	✓			
Ladder		<input type="checkbox"/>	✓			

**Chip Lot #**

**Reagent Kit Lot #**

**Chip Comments :**

Assay Class: High Sensitivity DNA Assay  
Data Path: C:\...ents and Settings\Bioanalyzer\2012-02-15\2012-02-15\_002.xad

Created: 2/15/2012 10:13:17 AM  
Modified: 2/15/2012 11:08:02 AM

**Electrophoresis Assay Details**

**General Analysis Settings**

Number of Available Sample and Ladder Wells (Max.) : 12  
Minimum Visible Range [s] : 32  
Maximum Visible Range [s] : 138  
Start Analysis Time Range [s] : 33  
End Analysis Time Range [s] : 137.5  
Ladder Concentration [pg/μl] : 1950  
Uses Standard Area for Ladder Fragments  
Lower Marker Concentration [pg/μl] : 125  
Upper Marker Concentration [pg/μl] : 75  
Used Upper Marker for Quantitation  
Standard Curve Fit is Point to Point  
Show Data Aligned to Lower and Upper Marker

**Integrator Settings**

Integration Start Time [s] : 33.05  
Integration End Time [s] : 137  
Slope Threshold : 0.8  
Height Threshold [FU] : 5  
Area Threshold : 0.1  
Width Threshold [s] : 0.6  
Baseline Plateau [s] : 0.5

**Filter Settings**

Filter Width [s] : 0.5  
Polynomial Order : 4

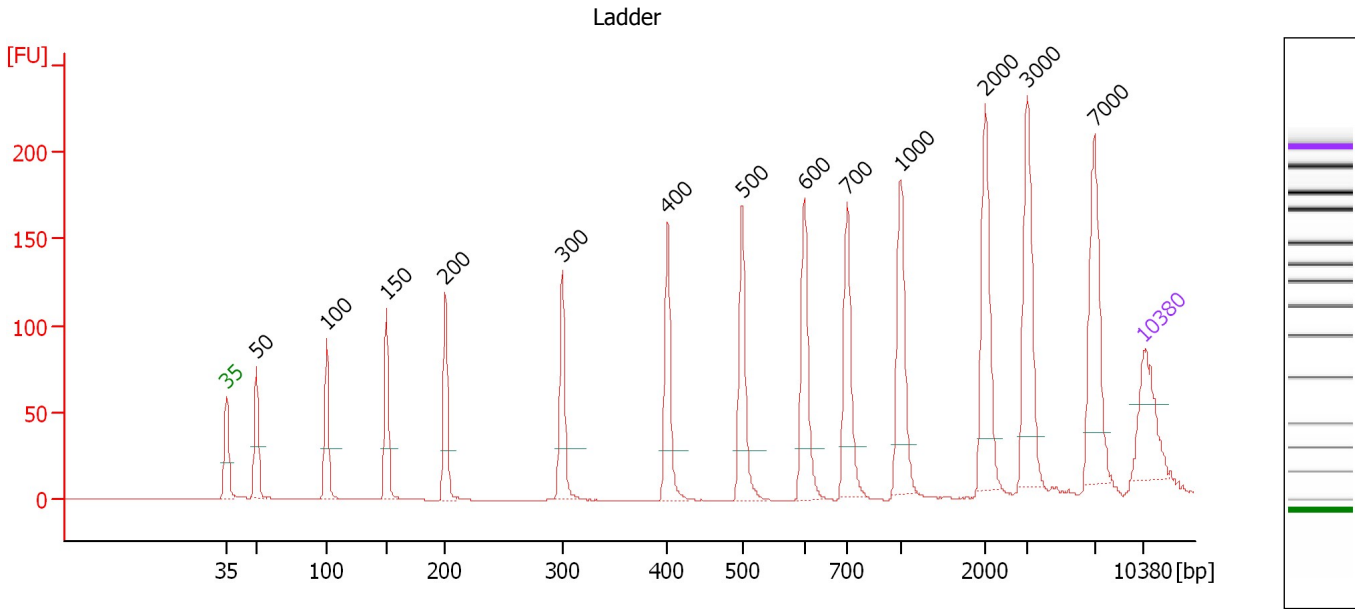
**Ladder**

Ladder Peak	Size	Area
1	35	160
2	50	210
3	100	208
4	150	221
5	200	242
6	300	270
7	400	305
8	500	306
9	600	336
10	700	321
11	1000	366
12	2000	413
13	3000	411
14	7000	400
15	10380	214

Assay Class: High Sensitivity DNA Assay  
 Data Path: C:\...ents and Settings\Bioanalyzer\2012-02-15\2012-02-15\_002.xad

Created: 2/15/2012 10:13:17 AM  
 Modified: 2/15/2012 11:08:02 AM

**Electropherogram Summary**



**Overall Results for Ladder**

Noise: 0.2

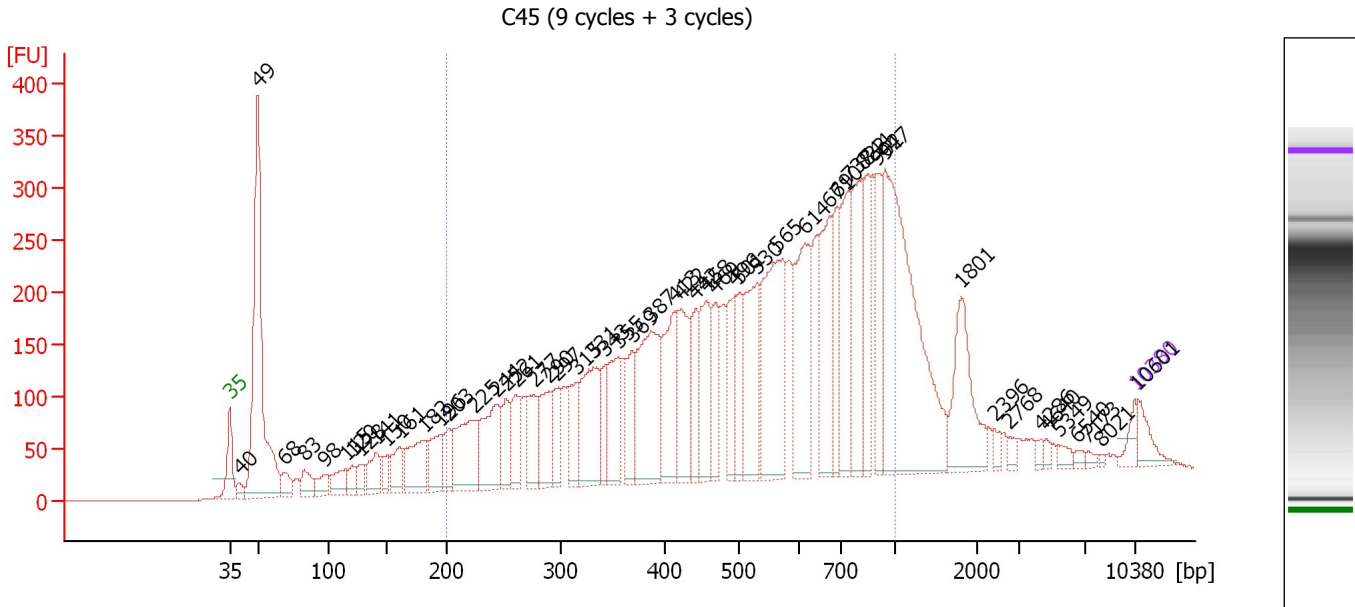
**Peak table for Ladder**

Peak	Size [bp]	Conc. [pg/μl]	Molarity [pmol/l]	Observations
1	35	125.00	5,411.3	Lower Marker
2	50	150.00	4,545.5	Ladder Peak
3	100	150.00	2,272.7	Ladder Peak
4	150	150.00	1,515.2	Ladder Peak
5	200	150.00	1,136.4	Ladder Peak
6	300	150.00	757.6	Ladder Peak
7	400	150.00	568.2	Ladder Peak
8	500	150.00	454.5	Ladder Peak
9	600	150.00	378.8	Ladder Peak
10	700	150.00	324.7	Ladder Peak
11	1,000	150.00	227.3	Ladder Peak
12	2,000	150.00	113.6	Ladder Peak
13	3,000	150.00	75.8	Ladder Peak
14	7,000	150.00	32.5	Ladder Peak
15	10,380	75.00	10.9	Upper Marker

Assay Class: High Sensitivity DNA Assay  
 Data Path: C:\...ents and Settings\Bioanalyzer\2012-02-15\2012-02-15\_002.xad

Created: 2/15/2012 10:13:17 AM  
 Modified: 2/15/2012 11:08:02 AM

**Electropherogram Summary Continued ...**



**Overall Results for sample 1 : C45 (9 cycles + 3 cycles)**

Number of peaks found: 54                      Corr. Area 1: 7,088.7  
 Noise: 0.3

**Peak table for sample 1 : C45 (9 cycles + 3 cycles)**


Peak	Size [bp]	Conc. [pg/μl]	Molarity [pmol/l]	Observations
1	35	125.00	5,411.3	Lower Marker
2	40	81.84	3,087.4	
3	49	2,429.69	74,525.4	
4	68	147.12	3,261.2	
5	83	172.09	3,158.0	
6	98	148.47	2,306.0	
7	115	189.29	2,498.9	
8	120	128.13	1,615.1	
9	128	125.65	1,488.5	
10	141	265.00	2,856.2	
11	150	129.41	1,306.4	
12	161	261.43	2,466.5	
13	182	437.68	3,651.7	
14	196	313.36	2,425.3	
15	203	201.48	1,506.4	
16	225	637.45	4,294.8	
17	244	584.80	3,633.3	
18	252	254.41	1,528.4	
19	261	325.43	1,889.2	
20	277	332.04	1,817.9	
21	290	360.17	1,883.6	
22	297	256.58	1,308.4	
23	315	270.16	1,298.1	
24	331	694.36	3,175.6	
25	343	242.85	1,072.4	
26	355	442.31	1,885.2	

Assay Class: High Sensitivity DNA Assay  
 Data Path: C:\...ents and Settings\Bioanalyzer\2012-02-15\2012-02-15\_002.xad


Created: 2/15/2012 10:13:17 AM  
 Modified: 2/15/2012 11:08:02 AM

**Electropherogram Summary Continued ...**

**... Peak table for sample 1 : C45 (9 cycles + 3 cycles)**

Peak	Size [bp]	Conc. [pg/μl]	Molarity [pmol/l]	Observations
27	369	303.55	1,246.8	
28	387	933.81	3,657.0	
29	413	580.06	2,125.8	
30	422	532.02	1,909.6	
31	442	377.16	1,291.7	
32	458	472.87	1,565.7	
33	469	340.22	1,098.6	
34	496	385.77	1,178.4	
35	501	306.91	927.6	
36	530	667.41	1,907.4	
37	565	1,082.13	2,901.3	
38	614	804.16	1,984.7	
39	671	666.92	1,504.8	
40	690	353.05	774.9	
41	737	613.82	1,261.5	
42	822	637.93	1,175.3	
43	844	365.16	655.8	
44	902	381.84	641.8	
45	947	1,929.48	3,086.6	
46	1,801	516.85	434.7	
47	2,396	47.79	30.2	
48	2,768	39.02	21.4	
49	4,286	32.27	11.4	
50	4,640	28.44	9.3	
51	5,349	42.08	11.9	
52	6,540	24.20	5.6	
53	7,173	24.01	5.1	
54	8,021	11.99	2.3	
55	 10,380	75.00	10.9	Upper Marker
56	10,601	0.00	0.0	

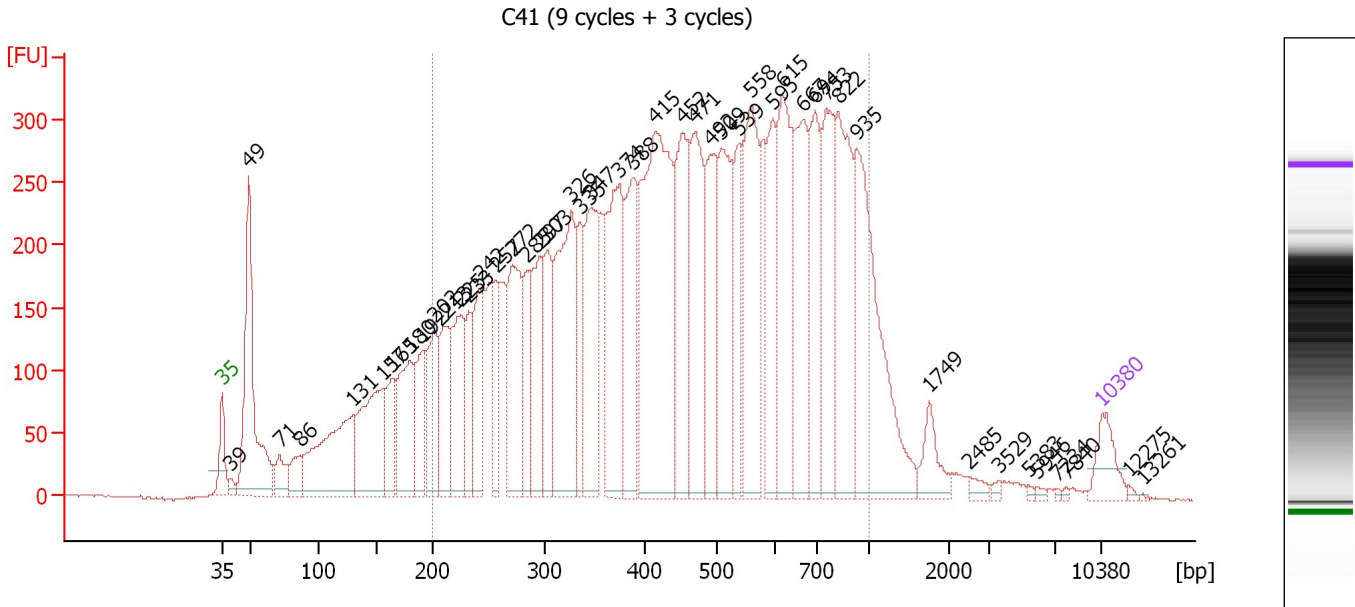
**Region table for sample 1 : C45 (9 cycles + 3 cycles)**

From [bp]	Molarity [pmol/l]	Average Size [bp]	Conc. [pg/μl]	To [bp]	Corr. Area	% of Total	Size distribution in CV [%]	Color
200	59,569.7	539	16,694.64	1,000	7,088.7	72	38.0	

Assay Class: High Sensitivity DNA Assay  
 Data Path: C:\...ents and Settings\Bioanalyzer\2012-02-15\2012-02-15\_002.xad

Created: 2/15/2012 10:13:17 AM  
 Modified: 2/15/2012 11:08:02 AM

**Electropherogram Summary Continued ...**



**Overall Results for sample 2 : C41 (9 cycles + 3 cycles)**

Number of peaks found: 47                      Corr. Area 1: 11,171.4  
 Noise: 1.0

**Peak table for sample 2 : C41 (9 cycles + 3 cycles)**


Peak	Size [bp]	Conc. [pg/μl]	Molarity [pmol/l]	Observations
1	35	125.00	5,411.3	Lower Marker
2	39	27.75	1,065.1	
3	49	727.32	22,504.0	
4	71	99.37	2,107.1	
5	86	93.77	1,650.7	
6	131	548.72	6,365.0	
7	157	462.27	4,468.2	
8	165	179.78	1,653.5	
9	180	331.07	2,783.0	
10	192	200.14	1,583.3	
11	202	274.80	2,057.5	
12	213	273.95	1,950.2	
13	225	303.43	2,041.3	
14	233	159.71	1,039.3	
15	242	247.73	1,548.7	
16	257	177.36	1,047.1	
17	272	410.07	2,281.1	
18	285	198.78	1,057.7	
19	297	293.82	1,498.2	
20	303	260.30	1,303.2	
21	326	606.62	2,815.3	
22	335	199.17	899.6	
23	347	418.26	1,828.5	
24	374	512.37	2,075.0	
25	388	373.13	1,457.5	
26	415	1,013.18	3,699.2	

Assay Class: High Sensitivity DNA Assay  
 Data Path: C:\...ents and Settings\Bioanalyzer\2012-02-15\2012-02-15\_002.xad


Created: 2/15/2012 10:13:17 AM  
 Modified: 2/15/2012 11:08:02 AM

**Electropherogram Summary Continued ...**

**... Peak table for sample 2 : C41 (9 cycles + 3 cycles)**

Peak	Size [bp]	Conc. [pg/μl]	Molarity [pmol/l]	Observations
27	452	427.48	1,432.2	
28	471	435.71	1,402.0	
29	492	341.24	1,051.5	
30	509	393.14	1,170.5	
31	539	203.42	572.3	
32	558	479.83	1,302.1	
33	595	265.18	675.0	
34	615	453.17	1,116.4	
35	667	360.88	820.3	
36	694	298.36	651.8	
37	753	359.65	723.4	
38	822	413.97	763.0	
39	935	609.34	987.7	
40	1,749	81.53	70.6	
41	2,485	19.43	11.9	
42	3,529	8.11	3.5	
43	5,383	4.84	1.4	
44	5,946	6.58	1.7	
45	7,234	3.37	0.7	
46	7,840	4.17	0.8	
47	 10,380	75.00	10.9	Upper Marker
48	12,275	0.00	0.0	
49	13,261	0.00	0.0	

**Region table for sample 2 : C41 (9 cycles + 3 cycles)**

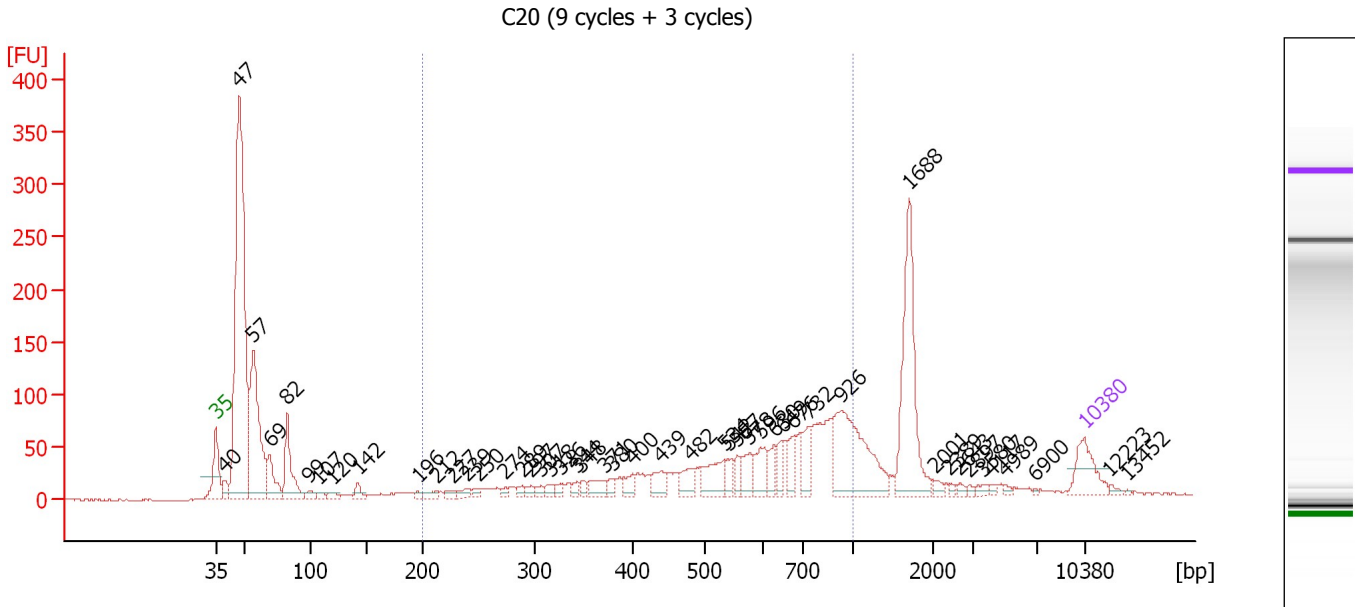
From [bp]	Molarity [pmol/l]	Average Size [bp]	Conc. [pg/μl]	To [bp]	Corr. Area	% of Total	Size distribution in CV [%]	Color
200	43,166.6	490	11,096.50	1,000	11,171.4	80	39.3	



Assay Class: High Sensitivity DNA Assay  
 Data Path: C:\...ents and Settings\Bioanalyzer\2012-02-15\2012-02-15\_002.xad

Created: 2/15/2012 10:13:17 AM  
 Modified: 2/15/2012 11:08:02 AM

**Electropherogram Summary Continued ...**



**Overall Results for sample 3 : C20 (9 cycles + 3 cycles)**

Number of peaks found: 48                      Corr. Area 1: 1,216.1  
 Noise: 0.8

**Peak table for sample 3 : C20 (9 cycles + 3 cycles)**

Peak	Size [bp]	Conc. [pg/μl]	Molarity [pmol/l]	Observations
1	35	125.00	5,411.3	Lower Marker
2	40	41.02	1,561.2	
3	47	1,428.70	45,619.3	
4	57	530.69	14,156.0	
5	69	113.01	2,474.2	
6	82	188.24	3,460.9	
7	99	21.31	326.7	
8	107	13.27	187.7	
9	120	18.82	238.0	
10	142	27.02	289.2	
11	196	9.17	71.0	
12	212	19.14	137.1	
13	227	16.03	106.8	
14	239	21.66	137.5	
15	250	14.27	86.4	
16	274	12.72	70.4	
17	289	15.62	81.8	
18	297	18.06	92.0	
19	307	15.54	76.6	
20	318	21.94	104.7	
21	326	16.31	75.8	
22	344	19.52	86.0	
23	348	15.87	69.2	
24	371	42.51	173.8	
25	380	20.57	82.1	
26	400	33.15	125.7	

Assay Class: High Sensitivity DNA Assay  
 Data Path: C:\...ents and Settings\Bioanalyzer\2012-02-15\2012-02-15\_002.xad


Created: 2/15/2012 10:13:17 AM  
 Modified: 2/15/2012 11:08:02 AM

**Electropherogram Summary Continued ...**

**... Peak table for sample 3 : C20 (9 cycles + 3 cycles)**

Peak	Size [bp]	Conc. [pg/µl]	Molarity [pmol/l]	Observations
27	439	52.12	179.7	
28	482	54.01	169.6	
29	534	86.28	244.6	
30	542	33.35	93.3	
31	557	30.05	81.7	
32	578	54.08	141.7	
33	596	68.34	173.7	
34	630	40.16	96.6	
35	649	38.92	90.8	
36	676	51.75	116.1	
37	732	69.06	142.9	
38	926	296.67	485.6	
39	1,688	298.15	267.6	
40	2,001	12.00	9.1	
41	2,389	6.25	4.0	
42	2,643	7.93	4.5	
43	2,897	5.62	2.9	
44	3,580	11.35	4.8	
45	4,117	5.31	2.0	
46	4,989	6.52	2.0	
47	6,900	3.18	0.7	
48	10,380	75.00	10.9	Upper Marker
49	12,223	0.00	0.0	
50	13,452	0.00	0.0	

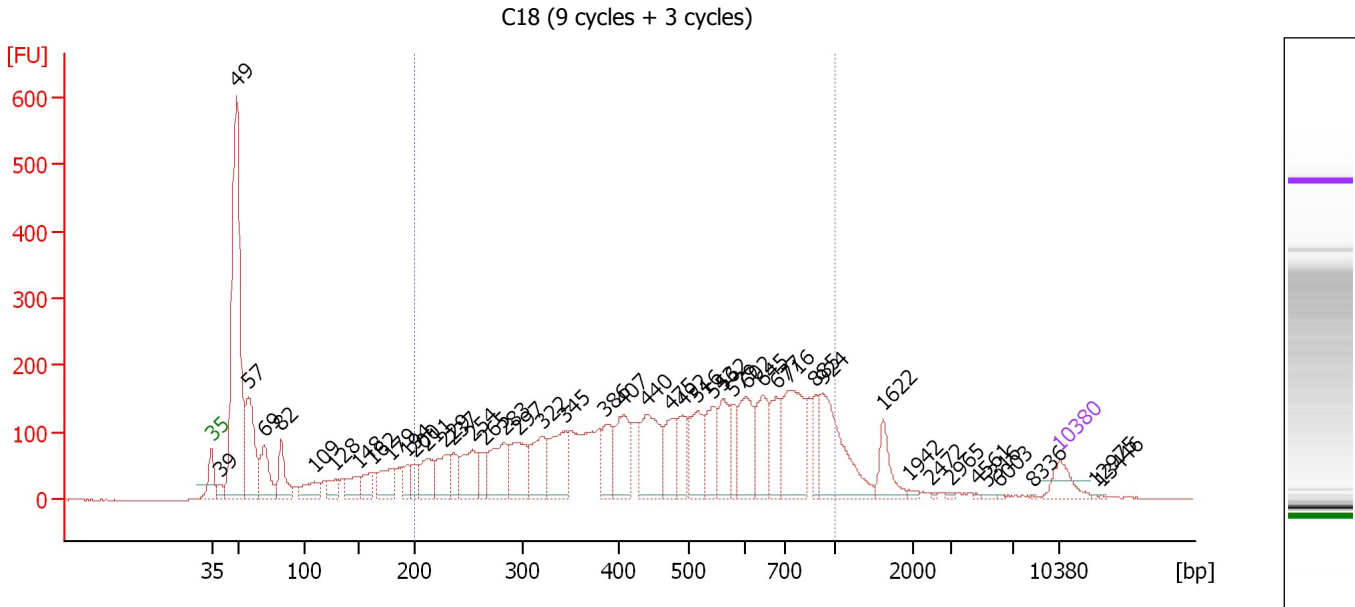
**Region table for sample 3 : C20 (9 cycles + 3 cycles)**

From [bp]	Molarity [pmol/l]	Average Size [bp]	Conc. [pg/µl]	To [bp]	Corr. Area	% of Total	Size distribution in CV [%]	Color
200	4,623.7	599	1,464.28	1,000	1,216.1	38	34.5	

Assay Class: High Sensitivity DNA Assay  
 Data Path: C:\...ents and Settings\Bioanalyzer\2012-02-15\2012-02-15\_002.xad

Created: 2/15/2012 10:13:17 AM  
 Modified: 2/15/2012 11:08:02 AM

**Electropherogram Summary Continued ...**



**Overall Results for sample 4 : C18 (9 cycles + 3 cycles)**

Number of peaks found: 46                      Corr. Area 1: 5,041.5  
 Noise: 0.8

**Peak table for sample 4 : C18 (9 cycles + 3 cycles)**

Peak	Size [bp]	Conc. [pg/μl]	Molarity [pmol/l]	Observations
1	35	125.00	5,411.3	Lower Marker
2	39	50.19	1,932.8	
3	49	1,789.44	55,766.9	
4	57	471.53	12,520.9	
5	69	246.48	5,384.8	
6	82	189.76	3,486.6	
7	109	125.28	1,737.1	
8	128	74.06	879.2	
9	148	111.77	1,141.3	
10	162	99.84	936.5	
11	179	157.15	1,333.3	
12	194	83.41	652.5	
13	200	73.80	560.4	
14	211	182.14	1,305.5	
15	229	169.27	1,121.6	
16	237	105.42	675.2	
17	254	219.93	1,310.1	
18	265	97.17	555.1	
19	283	257.23	1,374.7	
20	297	246.14	1,256.4	
21	322	233.36	1,099.0	
22	345	283.57	1,246.1	
23	386	163.39	641.4	
24	407	259.43	966.9	
25	440	325.33	1,120.9	
26	475	167.90	535.2	

Assay Class: High Sensitivity DNA Assay  
 Data Path: C:\...ents and Settings\Bioanalyzer\2012-02-15\2012-02-15\_002.xad


Created: 2/15/2012 10:13:17 AM  
 Modified: 2/15/2012 11:08:02 AM

**Electropherogram Summary Continued ...**

**... Peak table for sample 4 : C18 (9 cycles + 3 cycles)**

Peak	Size [bp]	Conc. [pg/µl]	Molarity [pmol/l]	Observations
27	492	136.99	422.3	
28	516	217.37	638.4	
29	543	175.90	490.9	
30	562	183.12	494.1	
31	579	94.70	247.7	
32	602	234.56	590.0	
33	645	208.88	490.6	
34	677	143.62	321.3	
35	716	378.60	801.2	
36	885	91.16	156.1	
37	924	372.42	610.9	
38	1,622	108.28	101.1	
39	1,942	10.04	7.8	
40	2,472	4.32	2.6	
41	2,965	6.53	3.3	
42	4,561	3.44	1.1	
43	5,316	7.30	2.1	
44	6,003	3.08	0.8	
45	8,336	2.01	0.4	
46	10,380	75.00	10.9	Upper Marker
47	12,975	0.00	0.0	
48	13,446	0.00	0.0	

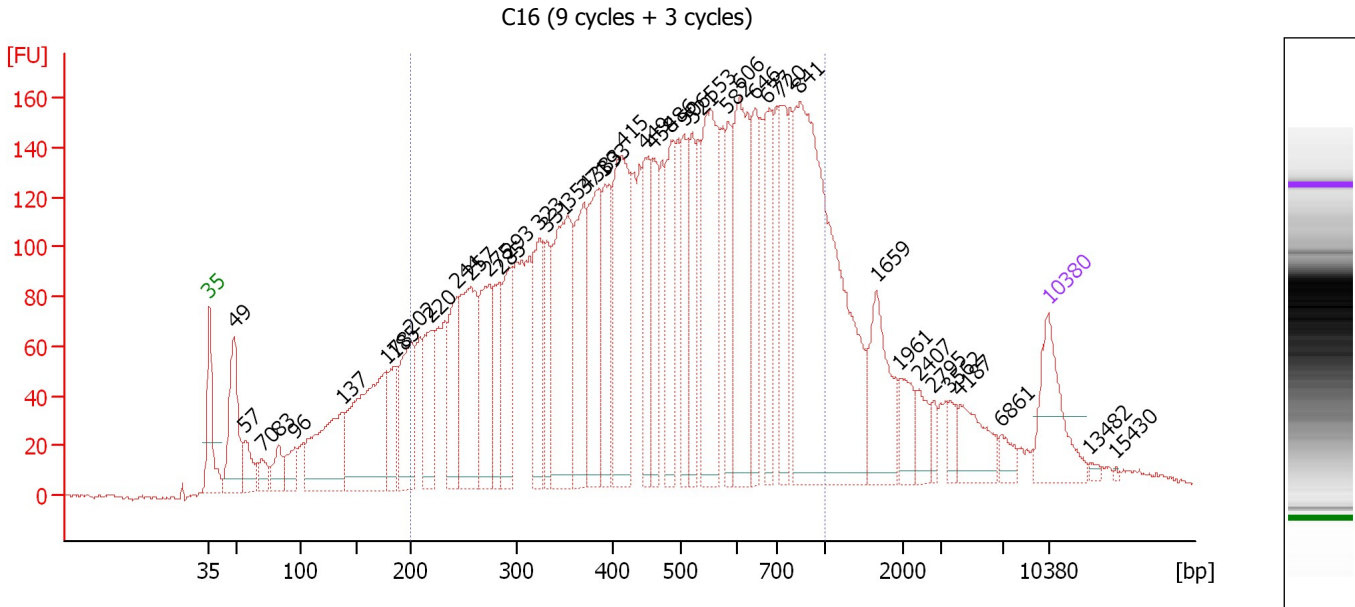
**Region table for sample 4 : C18 (9 cycles + 3 cycles)**

From [bp]	Molarity [pmol/l]	Average Size [bp]	Conc. [pg/µl]	To [bp]	Corr. Area	% of Total	Size distribution in CV [%]	Color
200	20,811.5	505	5,479.16	1,000	5,041.5	64	39.3	

Assay Class: High Sensitivity DNA Assay  
 Data Path: C:\...ents and Settings\Bioanalyzer\2012-02-15\2012-02-15\_002.xad

Created: 2/15/2012 10:13:17 AM  
 Modified: 2/15/2012 11:08:02 AM

**Electropherogram Summary Continued ...**



**Overall Results for sample 5 : C16 (9 cycles + 3 cycles)**

Number of peaks found: 43                      Corr. Area 1: 5,314.3  
 Noise: 0.8

**Peak table for sample 5 : C16 (9 cycles + 3 cycles)**

Peak	Size [bp]	Conc. [pg/μl]	Molarity [pmol/l]	Observations
1	35	125.00	5,411.3	Lower Marker
2	49	154.99	4,814.8	
3	57	53.49	1,432.9	
4	70	29.87	648.2	
5	83	43.10	790.1	
6	96	45.21	717.1	
7	137	193.71	2,139.2	
8	178	277.50	2,362.2	
9	185	75.67	618.5	
10	202	144.51	1,085.7	
11	220	107.69	741.2	
12	244	123.86	770.3	
13	257	207.82	1,227.0	
14	275	136.54	753.4	
15	285	92.34	491.6	
16	293	118.00	610.0	
17	323	123.33	577.8	
18	331	75.59	345.8	
19	354	246.22	1,053.9	
20	371	148.26	606.1	
21	383	159.00	628.3	
22	393	117.58	453.5	
23	415	231.38	844.9	
24	449	114.86	388.0	
25	458	87.97	291.1	
26	486	127.62	397.8	

Assay Class: High Sensitivity DNA Assay  
 Data Path: C:\...ents and Settings\Bioanalyzer\2012-02-15\2012-02-15\_002.xad


Created: 2/15/2012 10:13:17 AM  
 Modified: 2/15/2012 11:08:02 AM

**Electropherogram Summary Continued ...**

**... Peak table for sample 5 : C16 (9 cycles + 3 cycles)**

Peak	Size [bp]	Conc. [pg/µl]	Molarity [pmol/l]	Observations
27	506	97.04	290.7	
28	521	94.82	275.8	
29	553	220.35	603.8	
30	582	89.37	232.6	
31	606	205.04	513.0	
32	646	102.14	239.5	
33	677	102.92	230.3	
34	720	103.23	217.2	
35	841	545.91	983.0	
36	1,659	97.08	88.7	
37	1,961	36.79	28.4	
38	2,407	26.06	16.4	
39	2,795	11.43	6.2	
40	3,562	15.69	6.7	
41	4,187	50.44	18.3	
42	6,861	15.00	3.3	
43	10,380	75.00	10.9	Upper Marker
44	13,482	0.00	0.0	
45	15,430	0.00	0.0	

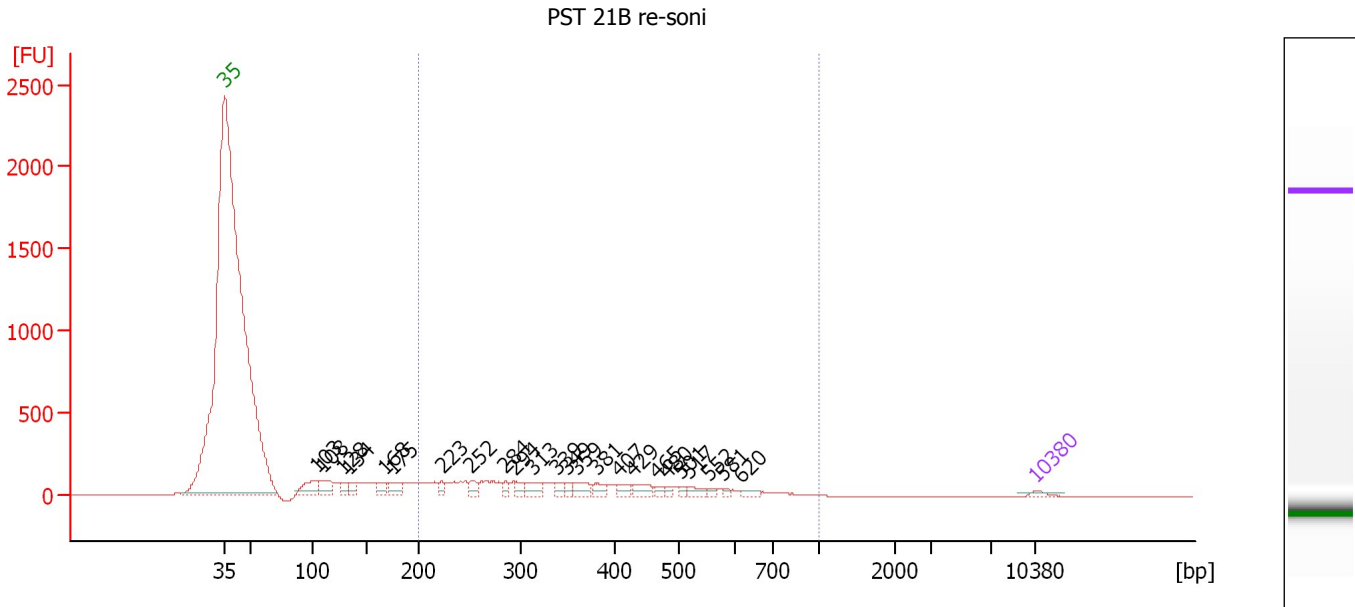
**Region table for sample 5 : C16 (9 cycles + 3 cycles)**

From [bp]	Molarity [pmol/l]	Average Size [bp]	Conc. [pg/µl]	To [bp]	Corr. Area	% of Total	Size distribution in CV [%]	Color
200	17,490.7	496	4,554.34	1,000	5,314.3	76	38.9	

Assay Class: High Sensitivity DNA Assay  
 Data Path: C:\...ents and Settings\Bioanalyzer\2012-02-15\2012-02-15\_002.xad

Created: 2/15/2012 10:13:17 AM  
 Modified: 2/15/2012 11:08:02 AM

**Electropherogram Summary Continued ...**



**Setpoint Deviations for sample 6 : PST 21B re-soni**

Height Threshold [FU] : 30

**Overall Results for sample 6 : PST 21B re-soni**

Number of peaks found: 24                      Corr. Area 1: 2,975.9  
 Noise: 0.5

**Peak table for sample 6 : PST 21B re-soni**

Peak	Size [bp]	Conc. [pg/μl]	Molarity [pmol/l]	Observations
1	35	125.00	5,411.3	Lower Marker
2	103	715.04	10,506.5	
3	108	547.07	7,664.5	
4	128	255.39	3,016.6	
5	134	250.51	2,836.6	
6	168	324.40	2,931.3	
7	175	380.48	3,288.7	
8	223	183.03	1,244.6	
9	252	238.82	1,438.0	
10	284	171.75	916.1	
11	294	225.35	1,162.0	
12	313	380.69	1,845.2	
13	339	192.99	862.8	
14	349	135.79	590.1	
15	359	322.74	1,362.3	
16	381	236.48	941.2	
17	407	204.32	761.3	
18	429	285.80	1,009.0	
19	465	127.81	416.1	
20	480	79.88	252.2	
21	501	90.22	272.9	
22	517	182.46	535.2	

Assay Class: High Sensitivity DNA Assay  
 Data Path: C:\...ents and Settings\Bioanalyzer\2012-02-15\2012-02-15\_002.xad


Created: 2/15/2012 10:13:17 AM  
 Modified: 2/15/2012 11:08:02 AM

### Electropherogram Summary Continued ...

#### ... Peak table for sample 6 : PST 21B re-soni

Peak	Size [bp]	Conc. [pg/μl]	Molarity [pmol/l]	Observations
23	552	82.44	226.1	
24	581	59.86	156.2	
25	620	107.58	263.1	
26	10,380	75.00	10.9	Upper Marker

#### Region table for sample 6 : PST 21B re-soni

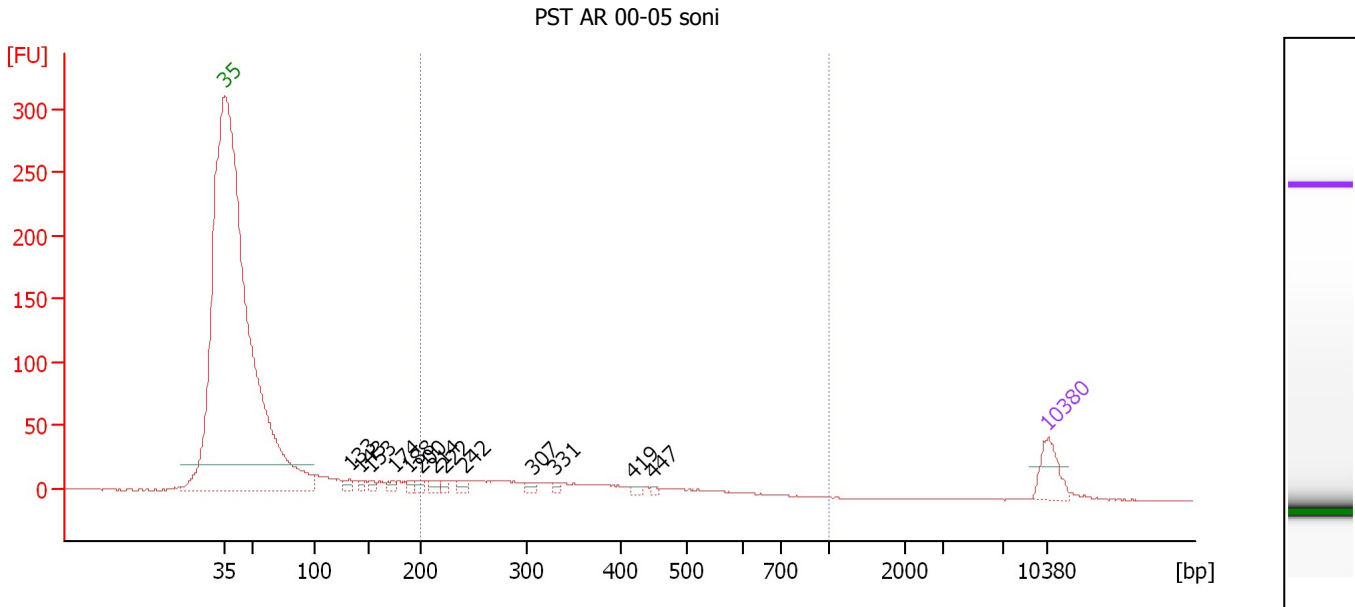
From [bp]	Molarity [pmol/l]	Average Size [bp]	Conc. [pg/μl]	To [bp]	Corr. Area	% of Total	Size distribution in CV [%]	Color
200	27,707.2	378	5,857.58	1,000	2,975.9	65	37.0	



Assay Class: High Sensitivity DNA Assay  
 Data Path: C:\...ents and Settings\Bioanalyzer\2012-02-15\2012-02-15\_002.xad

Created: 2/15/2012 10:13:17 AM  
 Modified: 2/15/2012 11:08:02 AM

**Electropherogram Summary Continued ...**



**Overall Results for sample 7 : PST AR 00-05 soni**

Number of peaks found: 13                      Corr. Area 1: 309.9  
 Noise: 0.3

**Peak table for sample 7 : PST AR 00-05 soni**

Peak	Size [bp]	Conc. [pg/μl]	Molarity [pmol/l]	Observations
1	35	125.00	5,411.3	Lower Marker
2	133	27.74	317.0	
3	143	16.88	178.8	
4	153	17.07	169.0	
5	174	21.81	189.7	
6	188	18.73	151.2	
7	200	21.59	163.7	
8	214	25.99	184.4	
9	222	14.35	98.1	
10	242	25.81	161.6	
11	307	18.14	89.6	
12	331	12.58	57.7	
13	419	10.60	38.3	
14	447	6.88	23.3	
15	10,380	75.00	10.9	Upper Marker

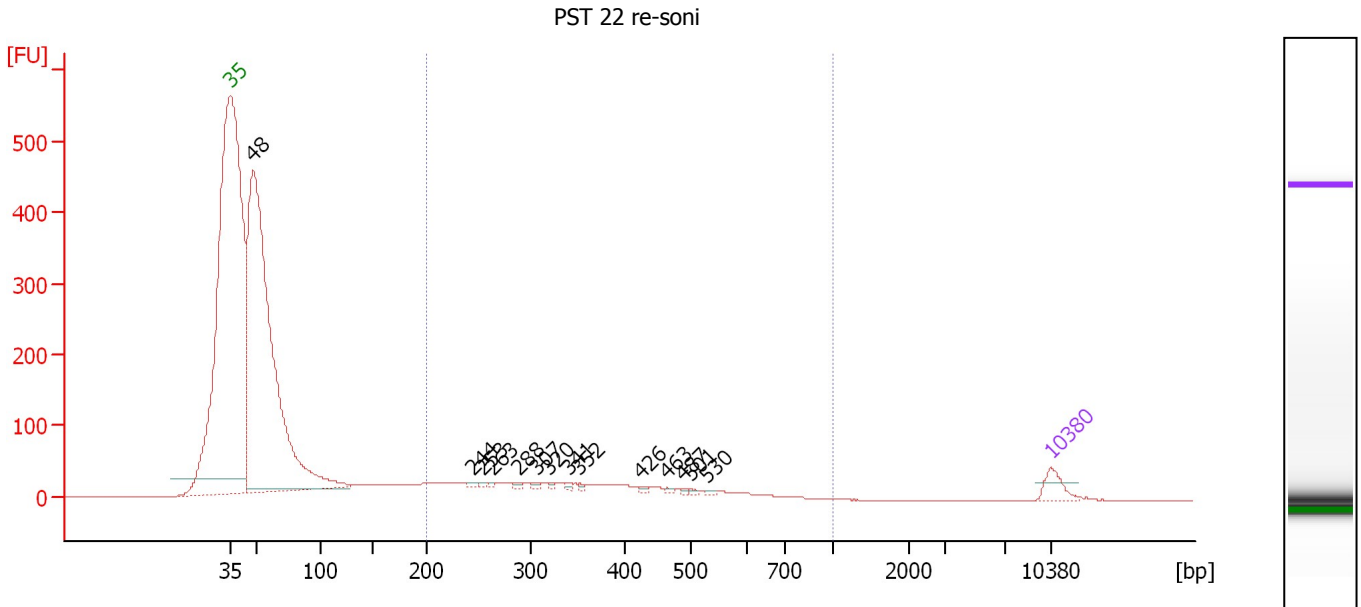
**Region table for sample 7 : PST AR 00-05 soni**

From [bp]	Molarity [pmol/l]	Average Size [bp]	Conc. [pg/μl]	To [bp]	Corr. Area	% of Total	Size distribution in CV [%]	Color
200	2,309.8	355	471.31	1,000	309.9	63	33.9	Blue

Assay Class: High Sensitivity DNA Assay  
 Data Path: C:\...ents and Settings\Bioanalyzer\2012-02-15\2012-02-15\_002.xad

Created: 2/15/2012 10:13:17 AM  
 Modified: 2/15/2012 11:08:02 AM

**Electropherogram Summary Continued ...**



**Overall Results for sample 8 : PST 22 re-soni**

Number of peaks found: 14                      Corr. Area 1: 718.6  
 Noise: 0.3

**Peak table for sample 8 : PST 22 re-soni**

Peak	Size [bp]	Conc. [pg/μl]	Molarity [pmol/l]	Observations
1	35	125.00	5,411.3	Lower Marker
2	48	5,008.43	158,463.1	
3	244	14.77	91.6	
4	253	10.70	63.9	
5	263	10.07	57.9	
6	288	14.65	77.0	
7	307	18.00	88.9	
8	320	11.37	53.8	
9	341	13.89	61.7	
10	352	11.08	47.7	
11	426	13.89	49.5	
12	463	10.08	33.0	
13	487	8.25	25.7	
14	501	8.82	26.7	
15	530	9.87	28.2	
16	10,380	75.00	10.9	Upper Marker

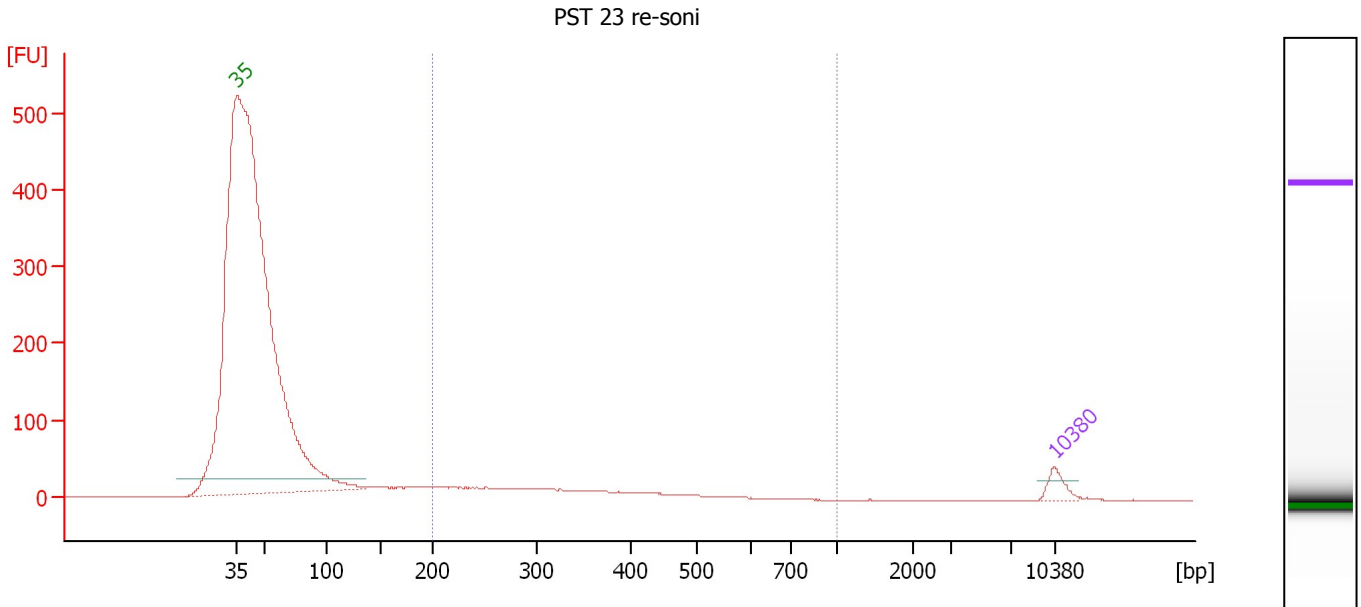
**Region table for sample 8 : PST 22 re-soni**

From [bp]	Molarity [pmol/l]	Average Size [bp]	Conc. [pg/μl]	To [bp]	Corr. Area	% of Total	Size distribution in CV [%]	Color
200	5,408.6	365	1,128.19	1,000	718.6	21	34.2	Blue

Assay Class: High Sensitivity DNA Assay  
 Data Path: C:\...ents and Settings\Bioanalyzer\2012-02-15\2012-02-15\_002.xad

Created: 2/15/2012 10:13:17 AM  
 Modified: 2/15/2012 11:08:02 AM

**Electropherogram Summary Continued ...**



**Overall Results for sample 9 : PST 23 re-soni**

Number of peaks found: 0                      Corr. Area 1: 367.6  
 Noise: 0.2

**Peak table for sample 9 : PST 23 re-soni**

Peak	Size [bp]	Conc. [pg/μl]	Molarity [pmol/l]	Observations
1	35	125.00	5,411.3	Lower Marker
2	10,380	75.00	10.9	Upper Marker

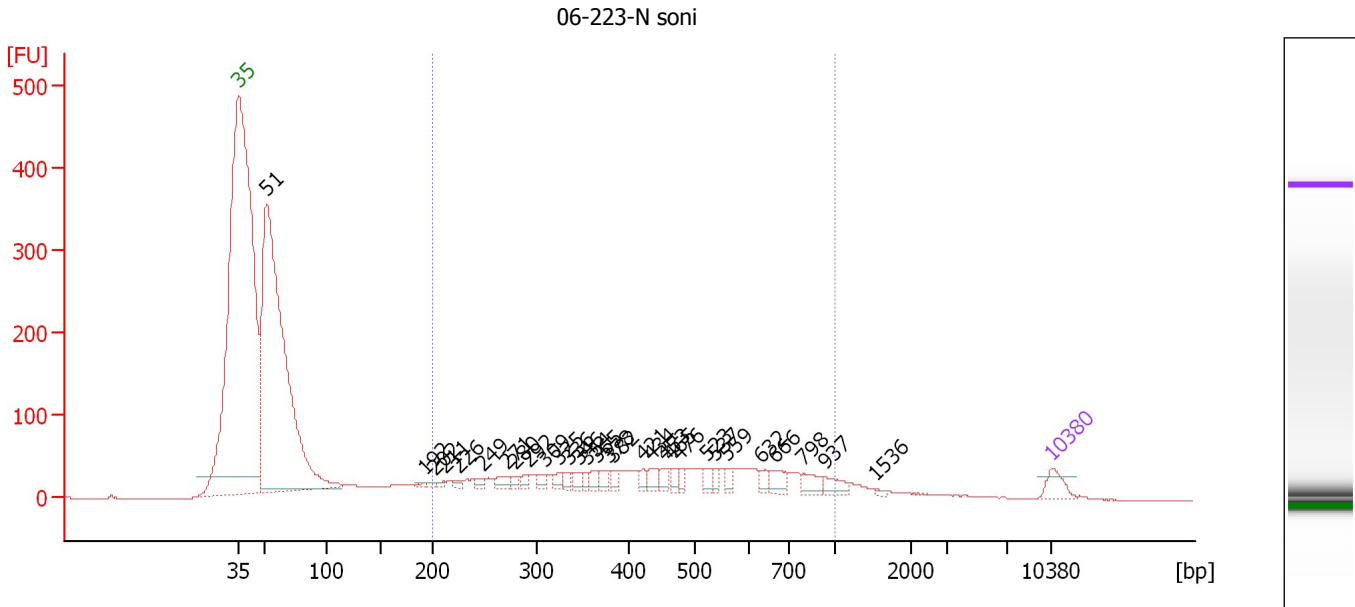
**Region table for sample 9 : PST 23 re-soni**

From [bp]	Molarity [pmol/l]	Average Size [bp]	Conc. [pg/μl]	To [bp]	Corr. Area	% of Total	Size distribution in CV [%]	Color
200	3,423.1	332	671.90	1,000	367.6	72	30.3	Blue

Assay Class: High Sensitivity DNA Assay  
 Data Path: C:\...ents and Settings\Bioanalyzer\2012-02-15\2012-02-15\_002.xad

Created: 2/15/2012 10:13:17 AM  
 Modified: 2/15/2012 11:08:02 AM

**Electropherogram Summary Continued ...**



**Overall Results for sample 10 : 06-223-N soni**

Number of peaks found: 30                      Corr. Area 1: 1,415.2  
 Noise: 0.3

**Peak table for sample 10 : 06-223-N soni**

Peak	Size [bp]	Conc. [pg/μl]	Molarity [pmol/l]	Observations
1	35	125.00	5,411.3	Lower Marker
2	51	4,588.37	136,193.3	
3	192	17.80	140.5	
4	202	15.73	118.2	
5	211	18.57	133.4	
6	226	24.23	162.5	
7	249	31.28	190.2	
8	271	59.66	333.1	
9	280	33.07	178.8	
10	292	34.56	179.3	
11	309	41.14	201.4	
12	325	47.87	223.2	
13	336	43.68	197.1	
14	346	50.46	221.2	
15	354	34.91	149.6	
16	365	48.65	201.9	
17	378	51.98	208.2	
18	382	44.33	175.7	
19	421	39.51	142.2	
20	434	60.42	210.9	
21	453	49.82	166.5	
22	465	41.25	134.5	
23	476	37.96	120.8	
24	523	45.68	132.4	
25	537	39.85	112.4	
26	559	38.55	104.5	

Assay Class: High Sensitivity DNA Assay  
 Data Path: C:\...ents and Settings\Bioanalyzer\2012-02-15\2012-02-15\_002.xad


Created: 2/15/2012 10:13:17 AM  
 Modified: 2/15/2012 11:08:02 AM

### Electropherogram Summary Continued ...

#### ... Peak table for sample 10 : 06-223-N soni

Peak	Size [bp]	Conc. [pg/μl]	Molarity [pmol/l]	Observations
27	632	45.32	108.7	
28	666	83.81	190.6	
29	798	76.99	146.2	
30	937	69.80	112.9	
31	1,536	10.43	10.3	
32	10,380	75.00	10.9	Upper Marker

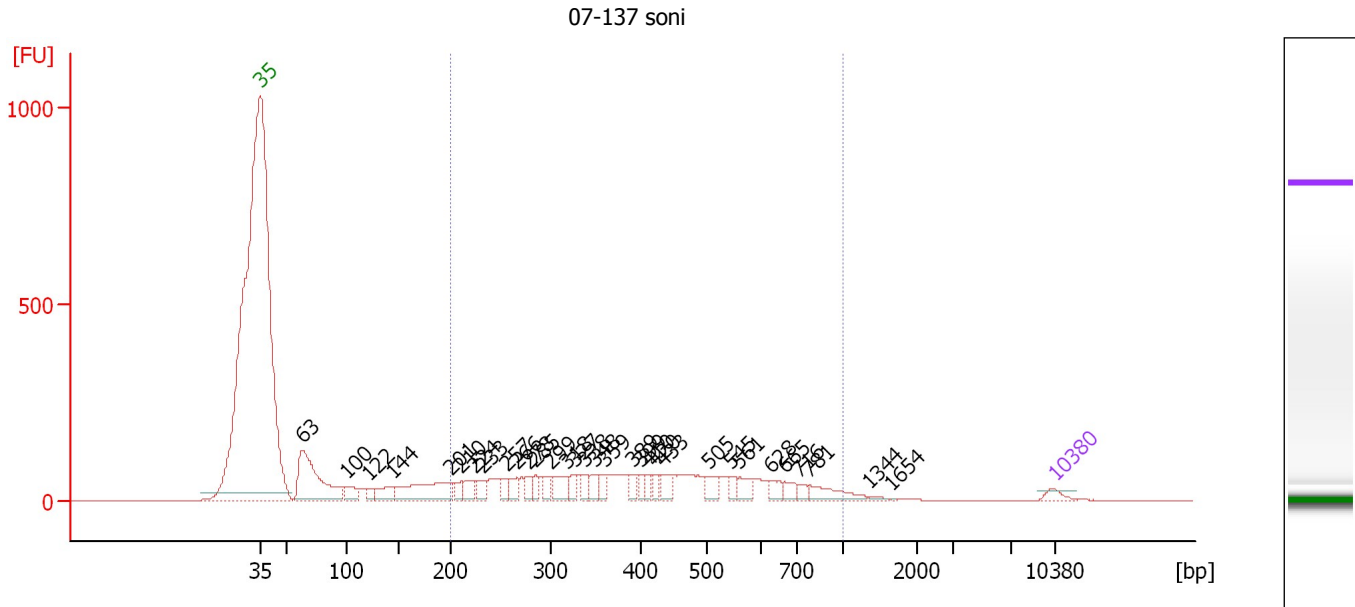
#### Region table for sample 10 : 06-223-N soni

From [bp]	Molarity [pmol/l]	Average Size [bp]	Conc. [pg/μl]	To [bp]	Corr. Area	% of Total	Size distribution in CV [%]	Color
200	11,068.5	468	2,747.16	1,000	1,415.2	39	39.4	

Assay Class: High Sensitivity DNA Assay  
 Data Path: C:\...ents and Settings\Bioanalyzer\2012-02-15\2012-02-15\_002.xad

Created: 2/15/2012 10:13:17 AM  
 Modified: 2/15/2012 11:08:02 AM

**Electropherogram Summary Continued ...**



**Overall Results for sample 11 : 07-137 soni**

Number of peaks found: 32                      Corr. Area 1: 2,456.5  
 Noise: 0.3

**Peak table for sample 11 : 07-137 soni**


Peak	Size [bp]	Conc. [pg/μl]	Molarity [pmol/l]	Observations
1	35	125.00	5,411.3	Lower Marker
2	63	1,741.34	41,753.5	
3	100	216.78	3,292.2	
4	122	113.18	1,407.9	
5	144	300.06	3,148.9	
6	201	905.40	6,814.5	
7	210	151.23	1,089.9	
8	224	229.35	1,552.1	
9	233	175.46	1,139.4	
10	257	148.55	876.0	
11	266	179.25	1,019.5	
12	278	130.11	707.9	
13	285	135.26	719.6	
14	299	146.87	744.4	
15	318	298.51	1,424.5	
16	327	144.70	670.8	
17	338	170.20	763.1	
18	348	167.58	728.7	
19	359	147.05	620.7	
20	389	121.86	474.3	
21	399	110.20	418.3	
22	410	109.04	403.4	
23	420	116.53	420.2	
24	433	180.66	631.6	
25	505	183.90	552.0	
26	545	105.80	293.9	

Assay Class: High Sensitivity DNA Assay  
 Data Path: C:\...ents and Settings\Bioanalyzer\2012-02-15\2012-02-15\_002.xad


Created: 2/15/2012 10:13:17 AM  
 Modified: 2/15/2012 11:08:02 AM

**Electropherogram Summary Continued ...**

**... Peak table for sample 11 : 07-137 soni**

Peak	Size [bp]	Conc. [pg/μl]	Molarity [pmol/l]	Observations
27	561	180.49	487.2	
28	628	128.17	309.1	
29	665	132.34	301.4	
30	716	87.54	185.4	
31	781	271.35	526.4	
32	1,344	26.66	30.1	
33	1,654	5.09	4.7	
34	 10,380	75.00	10.9	Upper Marker

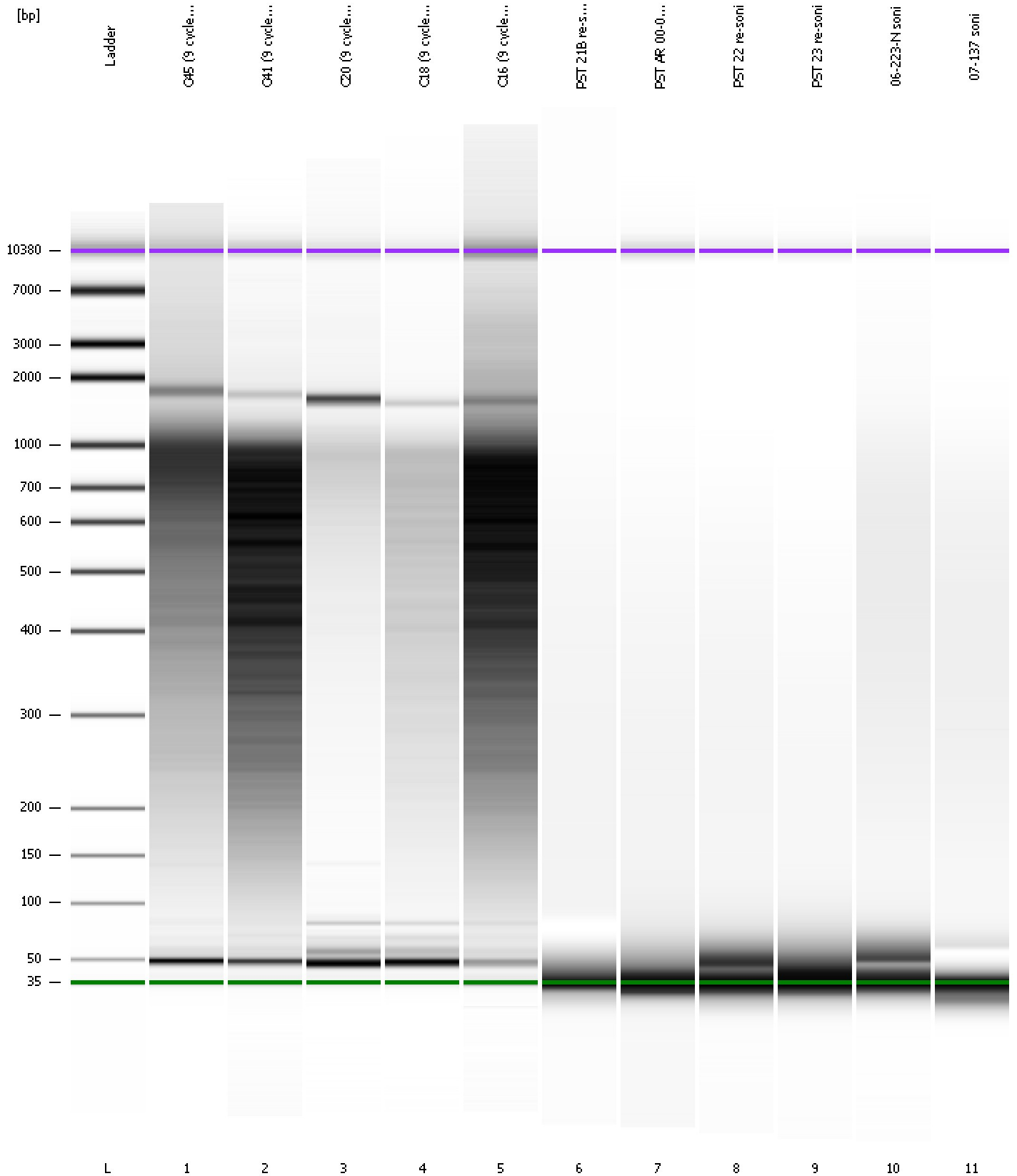
**Region table for sample 11 : 07-137 soni**

From [bp]	Molarity [pmol/l]	Average Size [bp]	Conc. [pg/μl]	To [bp]	Corr. Area	% of Total	Size distribution in CV [%]	Color
200	24,737.0	431	5,776.03	1,000	2,456.5	67	38.9	

Assay Class: High Sensitivity DNA Assay  
Data Path: C:\...ents and Settings\Bioanalyzer\2012-02-15\2012-02-15\_002.xad

Created: 2/15/2012 10:13:17 AM  
Modified: 2/15/2012 11:08:02 AM

**Gel Image**





Assay Class: High Sensitivity DNA Assay  
 Data Path: C:\...ents and Settings\Bioanalyzer\2012-02-15\2012-02-15\_002.xad

Created: 2/15/2012 10:13:17 AM  
 Modified: 2/15/2012 11:08:02 AM

**Run Logbook**

Description	Number	Source	Category	Sub Category	Time	Time Zone	User	Host
Run ended on port 1 (Number of wells acquired: 12)		Instrument	Run		2/15/2012 10:54:35 AM	(GMT --08:00) Pacific Standard Time	UC Davis	D8XSMGH1
Run started on port 1 (File: C:\Documents and Settings\Bioanalyzer\2012-02-15\2012-02-15_002.xad)		Instrument	Run		2/15/2012 10:13:22 AM	(GMT --08:00) Pacific Standard Time	UC Davis	D8XSMGH1
Product Number : G2938B		Instrument	Run		2/15/2012 10:13:22 AM	(GMT --08:00) Pacific Standard Time	UC Davis	D8XSMGH1
Name :		Instrument	Run		2/15/2012 10:13:22 AM	(GMT --08:00) Pacific Standard Time	UC Davis	D8XSMGH1
Vendor : Agilent Technologies		Instrument	Run		2/15/2012 10:13:22 AM	(GMT --08:00) Pacific Standard Time	UC Davis	D8XSMGH1
Serial# : DE13701086		Instrument	Run		2/15/2012 10:13:22 AM	(GMT --08:00) Pacific Standard Time	UC Davis	D8XSMGH1
Firmware : C.01.069		Instrument	Run		2/15/2012 10:13:22 AM	(GMT --08:00) Pacific Standard Time	UC Davis	D8XSMGH1
Cartridge : Electrode		Instrument	Run		2/15/2012 10:13:22 AM	(GMT --08:00) Pacific Standard Time	UC Davis	D8XSMGH1