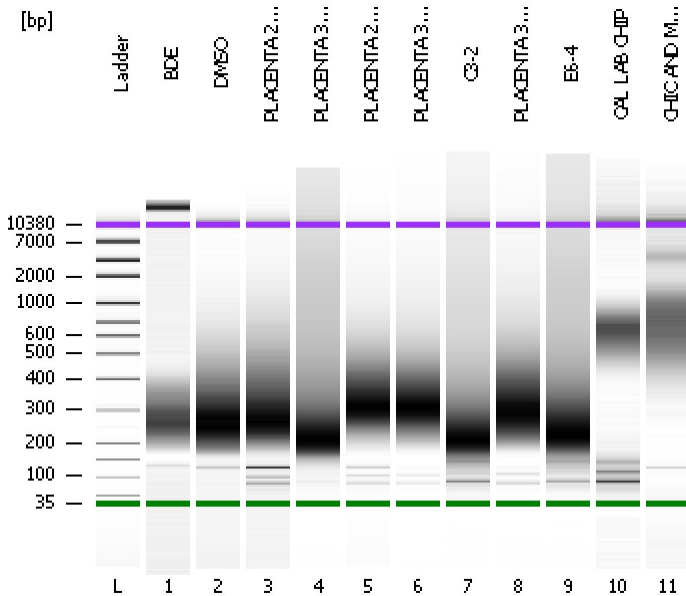


Assay Class: High Sensitivity DNA Assay
Data Path: C:\...ents and Settings\Bioanalyzer\2012-02-15\2012-02-15_007.xad

Created: 2/15/2012 1:22:15 PM
Modified: 2/17/2012 10:40:56 AM

Electrophoresis File Run Summary



Instrument Information:

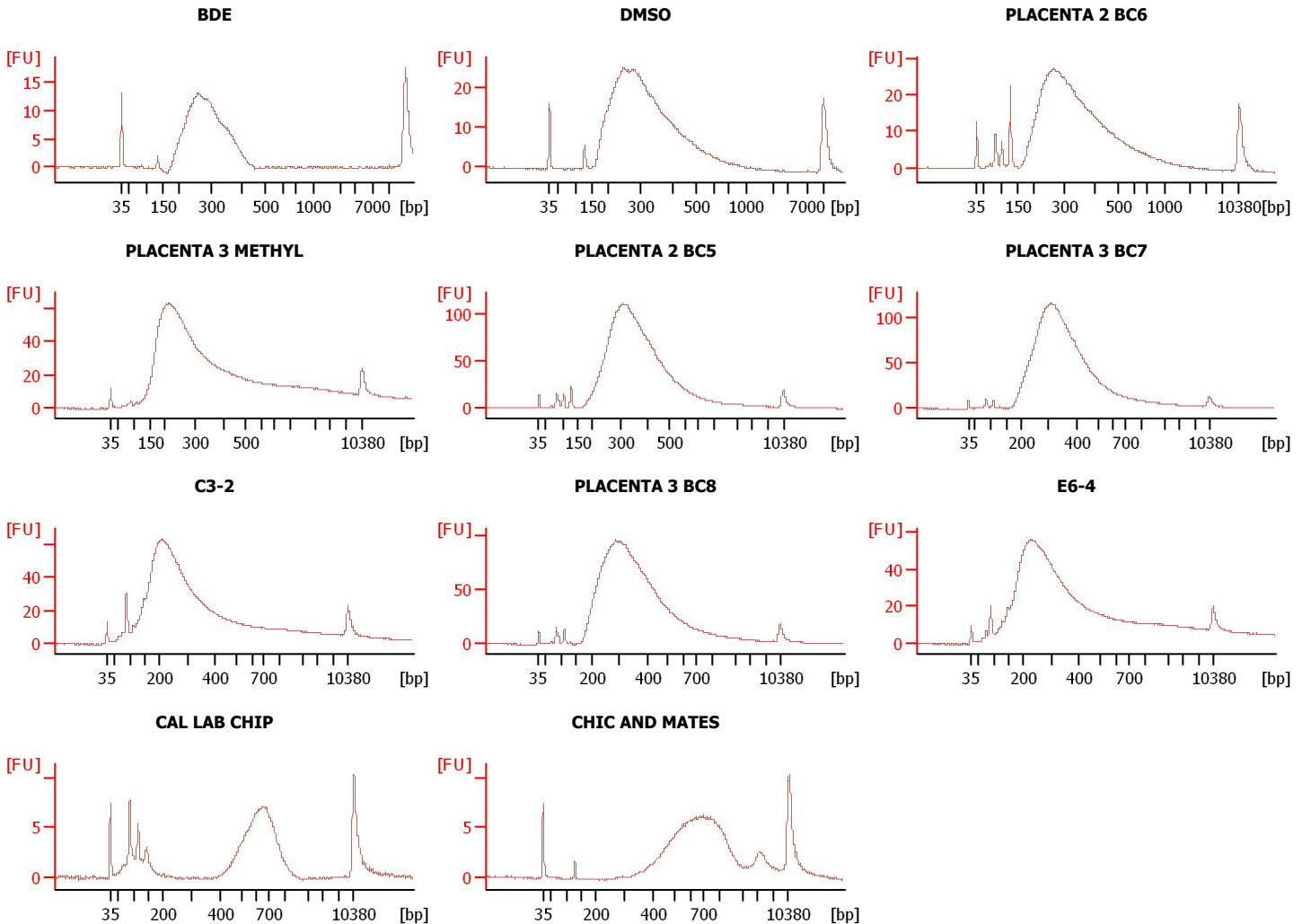
Instrument Name: DE13701086 Firmware: C.01.069
Serial#: DE13701086 Type: G2938B

Assay Information:

Assay Origin Path: C:\Program Files\Agilent\2100 bioanalyzer\2100 expert\assays\dsDNA\High Sensitivity DNA.xsy
Assay Class: High Sensitivity DNA Assay
Version: 1.03
Assay Comments: Copyright © 2003-2010 Agilent Technologies

Chip Information:

Chip Lot #:
Reagent Kit Lot #:
Chip Comments:



Assay Class: High Sensitivity DNA Assay
 Data Path: C:\...ents and Settings\Bioanalyzer\2012-02-15\2012-02-15_007.xad

Created: 2/15/2012 1:22:15 PM
 Modified: 2/17/2012 10:40:56 AM

Electrophoresis File Run Summary (Chip Summary)

Sample Name	Sample Comment	Rest. Digest	Status	Observation	Result Label	Result Color
BDE		<input type="checkbox"/>	✓			
DMSO		<input type="checkbox"/>	✓			
PLACENTA 2 BC6		<input type="checkbox"/>	✓			
PLACENTA 3 METHYL		<input type="checkbox"/>	✓			
PLACENTA 2 BC5		<input type="checkbox"/>	✓			
PLACENTA 3 BC7		<input type="checkbox"/>	✓			
C3-2		<input type="checkbox"/>	✓			
PLACENTA 3 BC8		<input type="checkbox"/>	✓			
E6-4		<input type="checkbox"/>	✓			
CAL LAB CHIP		<input type="checkbox"/>	✓			
CHIC AND MATES		<input type="checkbox"/>	✓			
Ladder		<input type="checkbox"/>	✓			

Chip Lot #

Reagent Kit Lot #

Chip Comments :

Assay Class: High Sensitivity DNA Assay
Data Path: C:\...ents and Settings\Bioanalyzer\2012-02-15\2012-02-15_007.xad

Created: 2/15/2012 1:22:15 PM
Modified: 2/17/2012 10:40:56 AM

Electrophoresis Assay Details

General Analysis Settings

Number of Available Sample and Ladder Wells (Max.) : 12
Minimum Visible Range [s] : 32
Maximum Visible Range [s] : 138
Start Analysis Time Range [s] : 33
End Analysis Time Range [s] : 137.5
Ladder Concentration [pg/μl] : 1950
Uses Standard Area for Ladder Fragments
Lower Marker Concentration [pg/μl] : 125
Upper Marker Concentration [pg/μl] : 75
Used Upper Marker for Quantitation
Standard Curve Fit is Point to Point
Show Data Aligned to Lower and Upper Marker

Integrator Settings

Integration Start Time [s] : 33.05
Integration End Time [s] : 137
Slope Threshold : 0.8
Height Threshold [FU] : 5
Area Threshold : 0.1
Width Threshold [s] : 0.6
Baseline Plateau [s] : 0.5

Filter Settings

Filter Width [s] : 0.5
Polynomial Order : 4

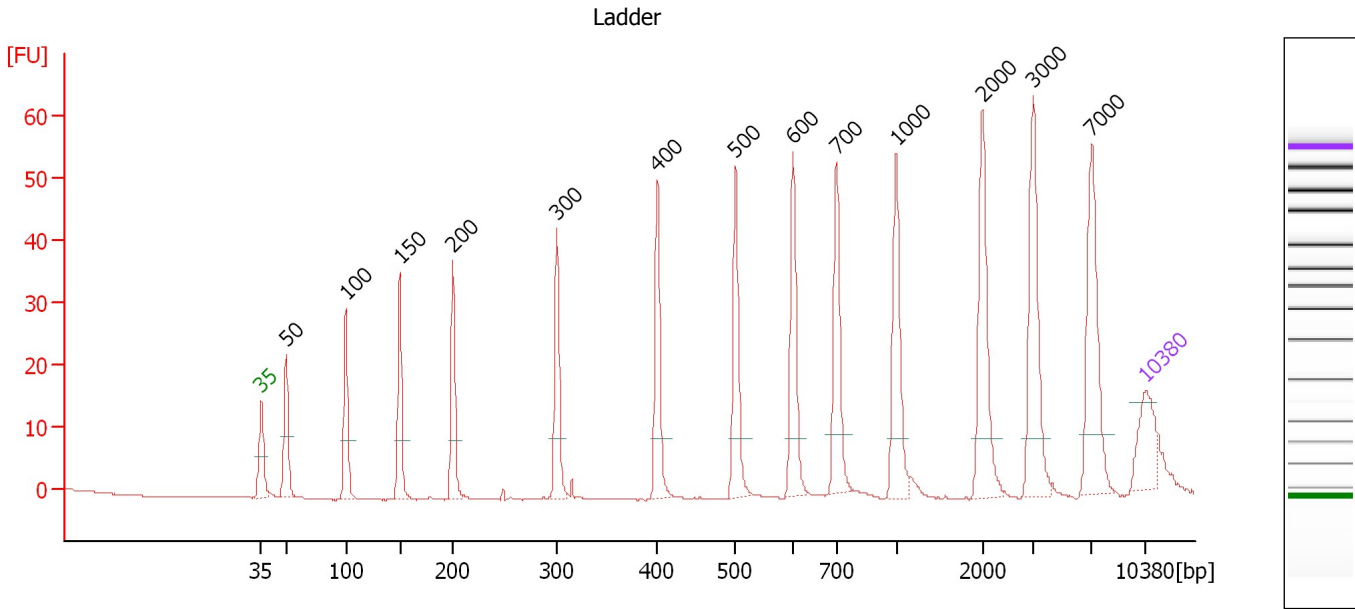
Ladder

Ladder Peak	Size	Area
1	35	160
2	50	210
3	100	208
4	150	221
5	200	242
6	300	270
7	400	305
8	500	306
9	600	336
10	700	321
11	1000	366
12	2000	413
13	3000	411
14	7000	400
15	10380	214

Assay Class: High Sensitivity DNA Assay
 Data Path: C:\...ents and Settings\Bioanalyzer\2012-02-15\2012-02-15_007.xad

Created: 2/15/2012 1:22:15 PM
 Modified: 2/17/2012 10:40:56 AM

Electropherogram Summary



Overall Results for Ladder

Noise: 0.1

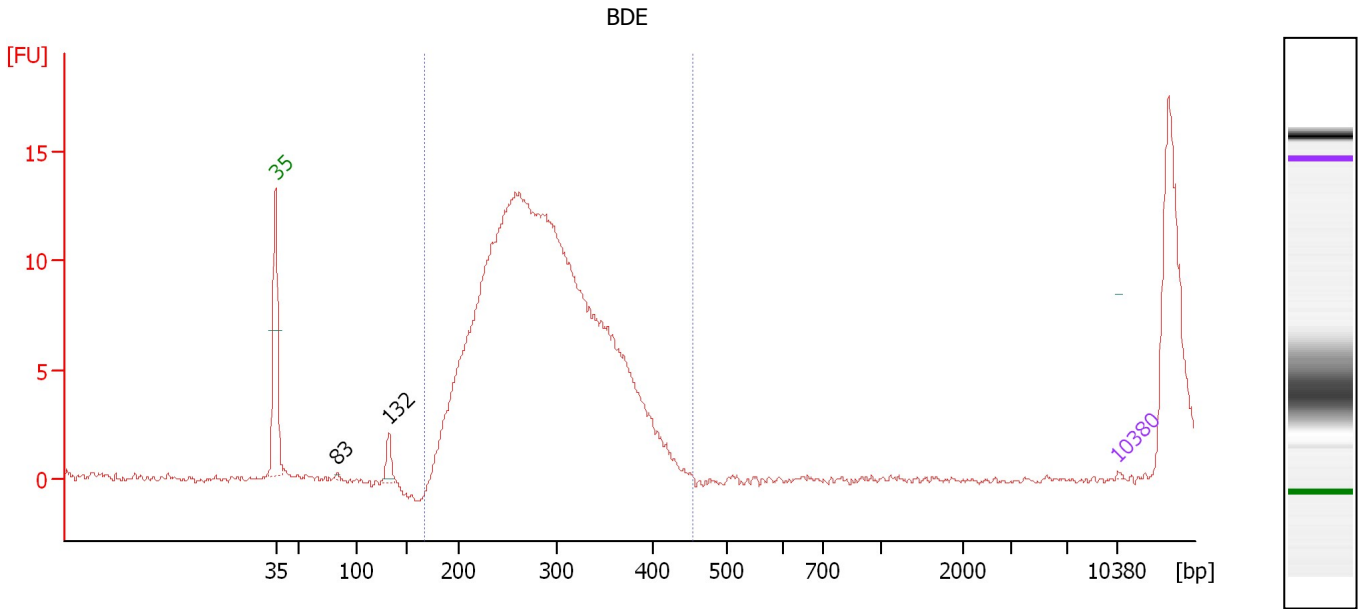
Peak table for Ladder

Peak	Size [bp]	Conc. [pg/μl]	Molarity [pmol/l]	Observations
1	35	125.00	5,411.3	Lower Marker
2	50	150.00	4,545.5	Ladder Peak
3	100	150.00	2,272.7	Ladder Peak
4	150	150.00	1,515.2	Ladder Peak
5	200	150.00	1,136.4	Ladder Peak
6	300	150.00	757.6	Ladder Peak
7	400	150.00	568.2	Ladder Peak
8	500	150.00	454.5	Ladder Peak
9	600	150.00	378.8	Ladder Peak
10	700	150.00	324.7	Ladder Peak
11	1,000	150.00	227.3	Ladder Peak
12	2,000	150.00	113.6	Ladder Peak
13	3,000	150.00	75.8	Ladder Peak
14	7,000	150.00	32.5	Ladder Peak
15	10,380	75.00	10.9	Upper Marker

Assay Class: High Sensitivity DNA Assay
 Data Path: C:\...ents and Settings\Bioanalyzer\2012-02-15\2012-02-15_007.xad

Created: 2/15/2012 1:22:15 PM
 Modified: 2/17/2012 10:40:56 AM

Electropherogram Summary Continued ...



Setpoint Deviations for sample 1 : BDE

Height Threshold [FU] : 0.2 Width Threshold [s] : 0.2

Overall Results for sample 1 : BDE

Number of peaks found: 2 Corr. Area 1: 166.3
 Noise: 0.1

Peak table for sample 1 : BDE

Peak	Size [bp]	Conc. [pg/μl]	Molarity [pmol/l]	Observations
1	35	125.00	5,411.3	Lower Marker
2	83	220.18	4,000.3	
3	132	2,172.68	24,938.0	
4	10,380	75.00	10.9	Upper Marker

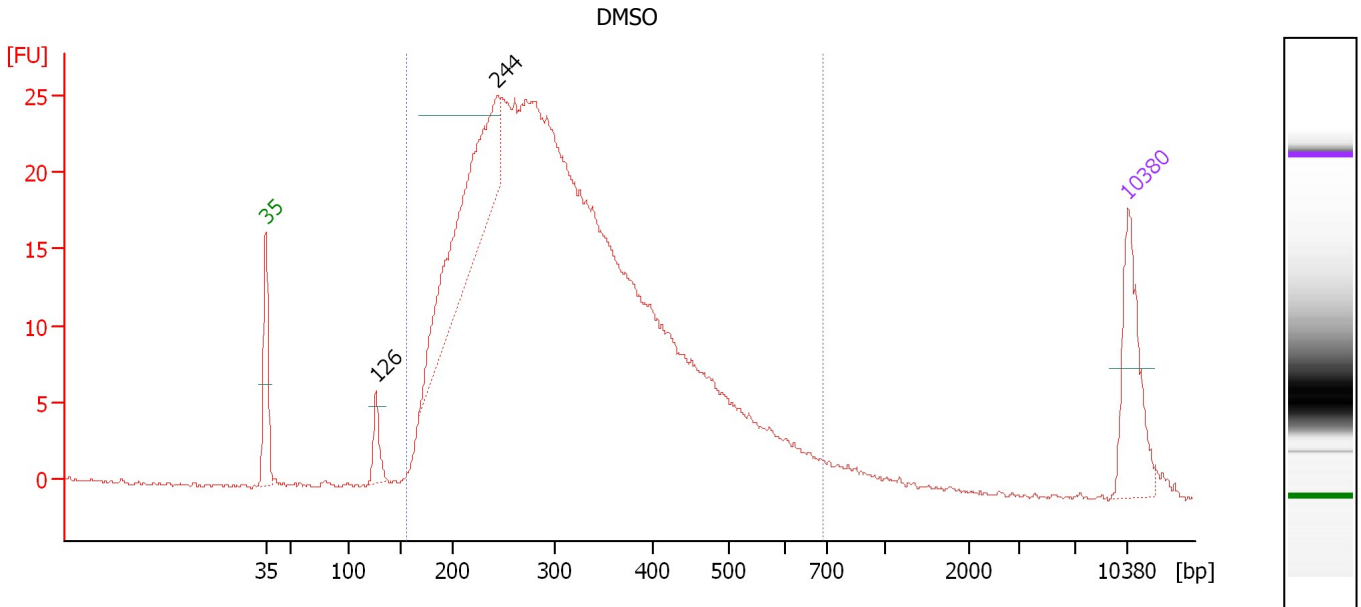
Region table for sample 1 : BDE

From [bp]	Molarity [pmol/l]	Average Size [bp]	Conc. [pg/μl]	To [bp]	Corr. Area	% of Total	Size distribution in CV [%]	Color
166	883,611.9	279	157,927.97	453	166.3	93	16.8	Blue

Assay Class: High Sensitivity DNA Assay
 Data Path: C:\...ents and Settings\Bioanalyzer\2012-02-15\2012-02-15_007.xad

Created: 2/15/2012 1:22:15 PM
 Modified: 2/17/2012 10:40:56 AM

Electropherogram Summary Continued ...



Overall Results for sample 2 : DMSO

Number of peaks found: 2 Corr. Area 1: 643.6
 Noise: 0.2

Peak table for sample 2 : DMSO

Peak	Size [bp]	Conc. [pg/μl]	Molarity [pmol/l]	Observations
1	35	125.00	5,411.3	Lower Marker
2	126	36.93	444.4	
3	244	269.59	1,675.9	
4	10,380	75.00	10.9	Upper Marker

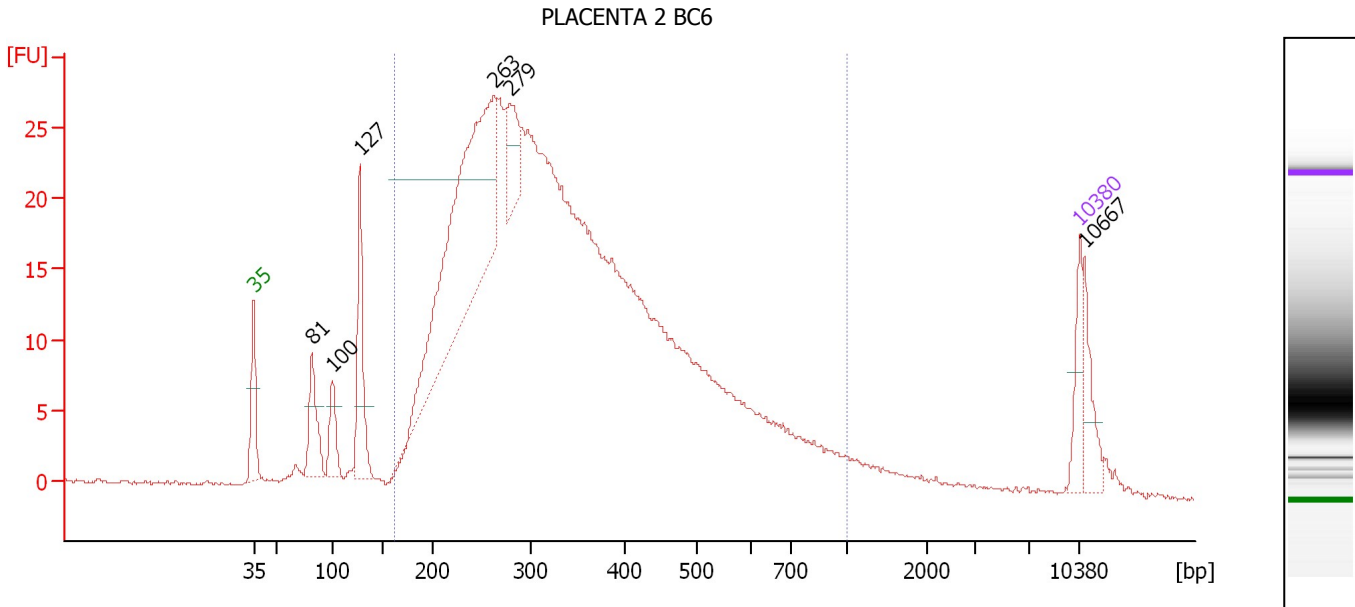
Region table for sample 2 : DMSO

From [bp]	Molarity [pmol/l]	Average Size [bp]	Conc. [pg/μl]	To [bp]	Corr. Area	% of Total	Size distribution in CV [%]	Color
155	16,069.7	319	2,971.07	693	643.6	97	32.2	Blue

Assay Class: High Sensitivity DNA Assay
 Data Path: C:\...ents and Settings\Bioanalyzer\2012-02-15\2012-02-15_007.xad

Created: 2/15/2012 1:22:15 PM
 Modified: 2/17/2012 10:40:56 AM

Electropherogram Summary Continued ...



Overall Results for sample 3 : PLACENTA 2 BC6

Number of peaks found: 6 Corr. Area 1: 717.8
 Noise: 0.1

Peak table for sample 3 : PLACENTA 2 BC6

Peak	Size [bp]	Conc. [pg/μl]	Molarity [pmol/l]	Observations
1	35	125.00	5,411.3	Lower Marker
2	81	190.21	3,553.6	
3	100	118.85	1,805.5	
4	127	301.04	3,599.2	
5	263	1,066.94	6,135.5	
6	279	133.70	725.0	
7	10,380	75.00	10.9	Upper Marker
8	10,667	0.00	0.0	

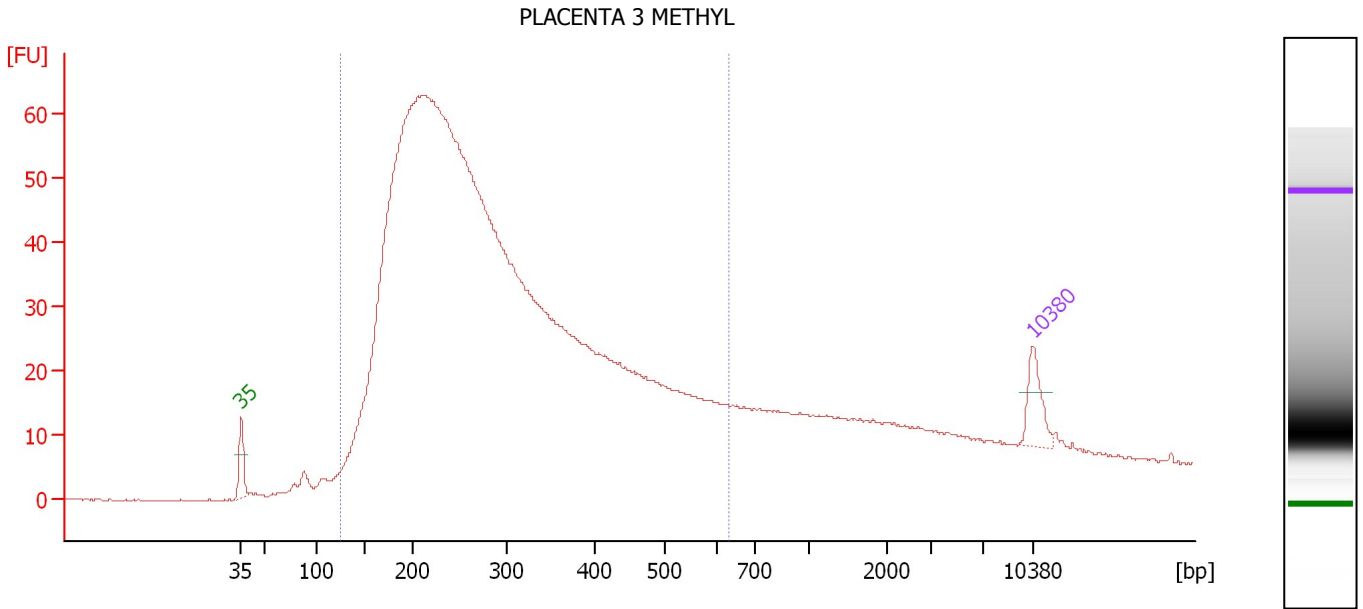
Region table for sample 3 : PLACENTA 2 BC6

From [bp]	Molarity [pmol/l]	Average Size [bp]	Conc. [pg/μl]	To [bp]	Corr. Area	% of Total	Size distribution in CV [%]	Color
161	38,817.6	358	7,760.91	1,000	717.8	88	39.2	Blue

Assay Class: High Sensitivity DNA Assay
 Data Path: C:\...ents and Settings\Bioanalyzer\2012-02-15\2012-02-15_007.xad

Created: 2/15/2012 1:22:15 PM
 Modified: 2/17/2012 10:40:56 AM

Electropherogram Summary Continued ...



Overall Results for sample 4 : PLACENTA 3 METHYL

Number of peaks found: 0 Corr. Area 1: 1,481.8
 Noise: 0.1

Peak table for sample 4 : PLACENTA 3 METHYL

Peak	Size [bp]	Conc. [pg/μl]	Molarity [pmol/l]	Observations
1	35	125.00	5,411.3	Lower Marker
2	10,380	75.00	10.9	Upper Marker

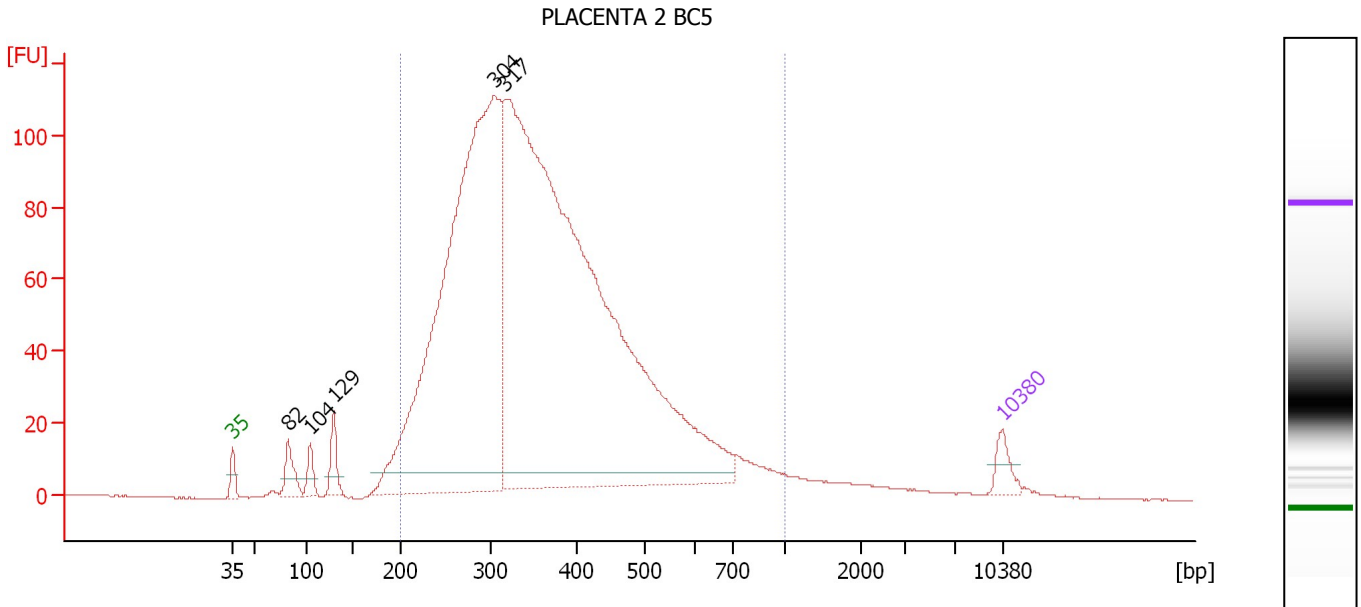
Region table for sample 4 : PLACENTA 3 METHYL

From [bp]	Molarity [pmol/l]	Average Size [bp]	Conc. [pg/μl]	To [bp]	Corr. Area	% of Total	Size distribution in CV [%]	Color
125	59,357.2	297	9,735.01	633	1,481.8	87	37.7	Blue

Assay Class: High Sensitivity DNA Assay
 Data Path: C:\...ents and Settings\Bioanalyzer\2012-02-15\2012-02-15_007.xad

Created: 2/15/2012 1:22:15 PM
 Modified: 2/17/2012 10:40:56 AM

Electropherogram Summary Continued ...



Overall Results for sample 5 : PLACENTA 2 BC5

Number of peaks found: 5 Corr. Area 1: 2,454.2
 Noise: 0.2

Peak table for sample 5 : PLACENTA 2 BC5

Peak	Size [bp]	Conc. [pg/μl]	Molarity [pmol/l]	Observations
1	35	125.00	5,411.3	Lower Marker
2	82	187.86	3,454.5	
3	104	115.56	1,686.6	
4	129	165.10	1,941.3	
5	304	4,858.89	24,181.9	
6	317	7,625.54	36,415.0	
7	10,380	75.00	10.9	Upper Marker

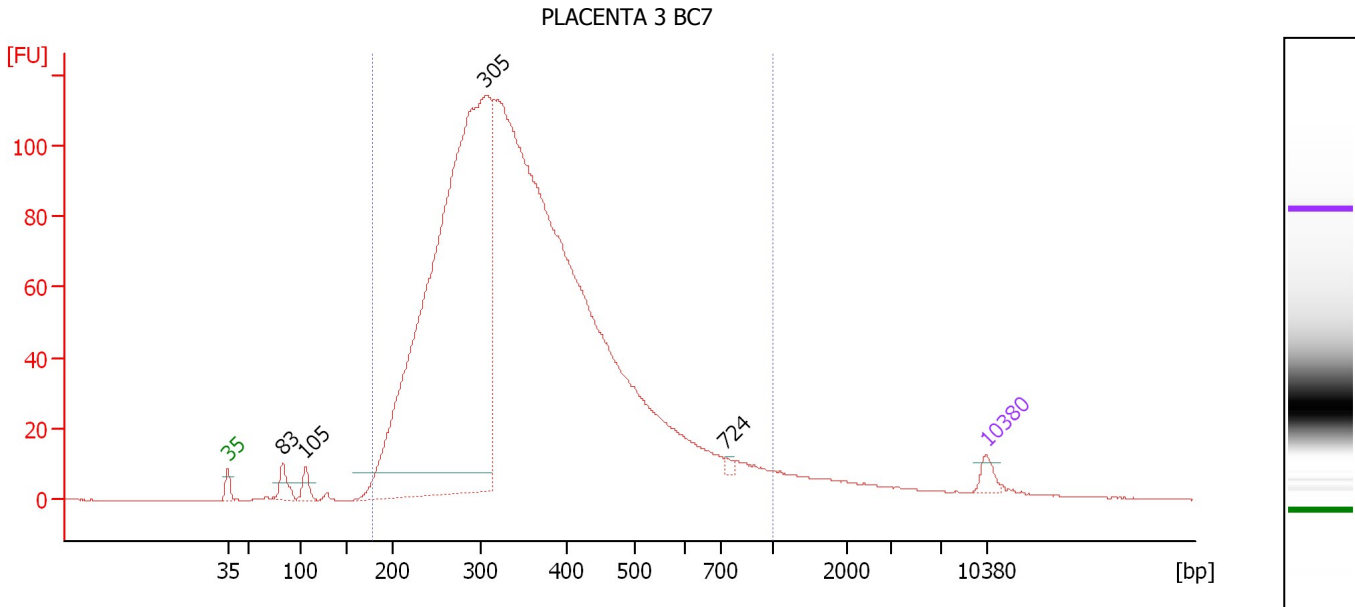
Region table for sample 5 : PLACENTA 2 BC5

From [bp]	Molarity [pmol/l]	Average Size [bp]	Conc. [pg/μl]	To [bp]	Corr. Area	% of Total	Size distribution in CV [%]	Color
200	56,235.5	372	12,355.50	1,000	2,454.2	94	32.5	Blue

Assay Class: High Sensitivity DNA Assay
 Data Path: C:\...ents and Settings\Bioanalyzer\2012-02-15\2012-02-15_007.xad

Created: 2/15/2012 1:22:15 PM
 Modified: 2/17/2012 10:40:56 AM

Electropherogram Summary Continued ...



Overall Results for sample 6 : PLACENTA 3 BC7

Number of peaks found: 4 Corr. Area 1: 2,548.0
 Noise: 0.2

Peak table for sample 6 : PLACENTA 3 BC7

Peak	Size [bp]	Conc. [pg/μl]	Molarity [pmol/l]	Observations
1	35	125.00	5,411.3	Lower Marker
2	83	196.56	3,606.0	
3	105	141.04	2,025.7	
4	305	9,291.60	46,200.3	
5	724	32.54	68.1	
6	10,380	75.00	10.9	Upper Marker

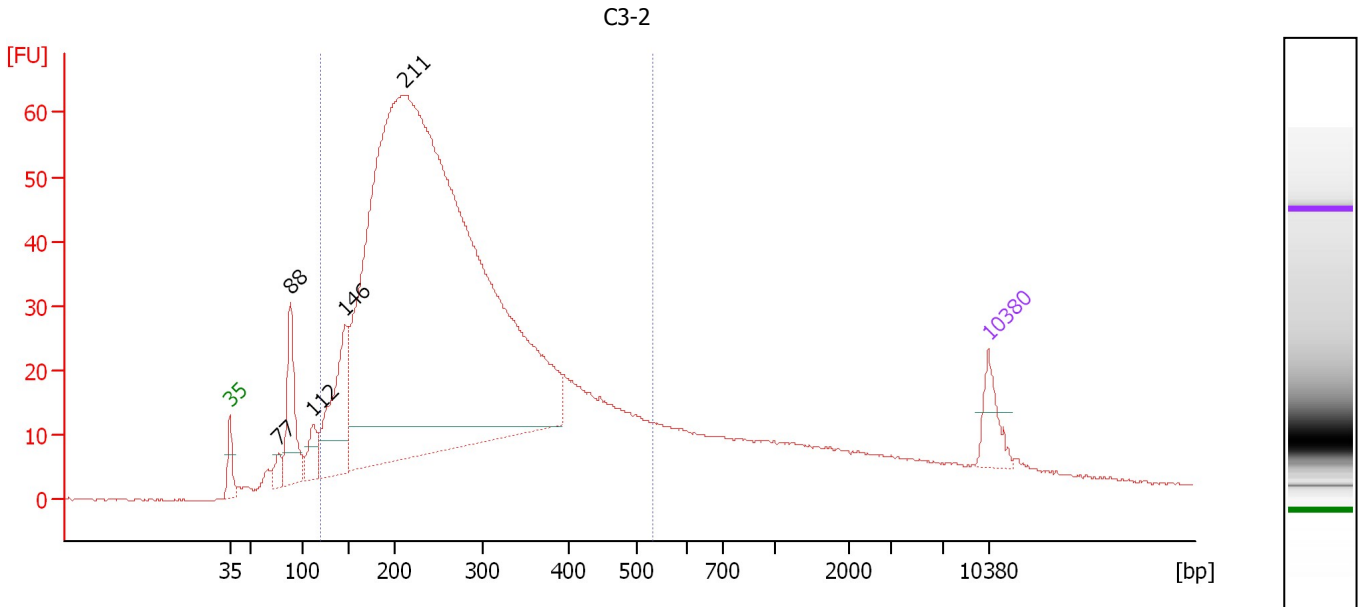
Region table for sample 6 : PLACENTA 3 BC7

From [bp]	Molarity [pmol/l]	Average Size [bp]	Conc. [pg/μl]	To [bp]	Corr. Area	% of Total	Size distribution in CV [%]	Color
179	106,246.3	364	22,558.29	1,000	2,548.0	95	34.2	Blue

Assay Class: High Sensitivity DNA Assay
 Data Path: C:\...ents and Settings\Bioanalyzer\2012-02-15\2012-02-15_007.xad

Created: 2/15/2012 1:22:15 PM
 Modified: 2/17/2012 10:40:56 AM

Electropherogram Summary Continued ...



Overall Results for sample 7 : C3-2

Number of peaks found: 5 Corr. Area 1: 1,429.2
 Noise: 0.2

Peak table for sample 7 : C3-2

Peak	Size [bp]	Conc. [pg/μl]	Molarity [pmol/l]	Observations
1	35	125.00	5,411.3	Lower Marker
2	77	53.49	1,053.9	
3	88	307.49	5,273.2	
4	112	99.26	1,344.1	
5	146	426.64	4,429.0	
6	211	6,023.94	43,279.7	
7	10,380	75.00	10.9	Upper Marker

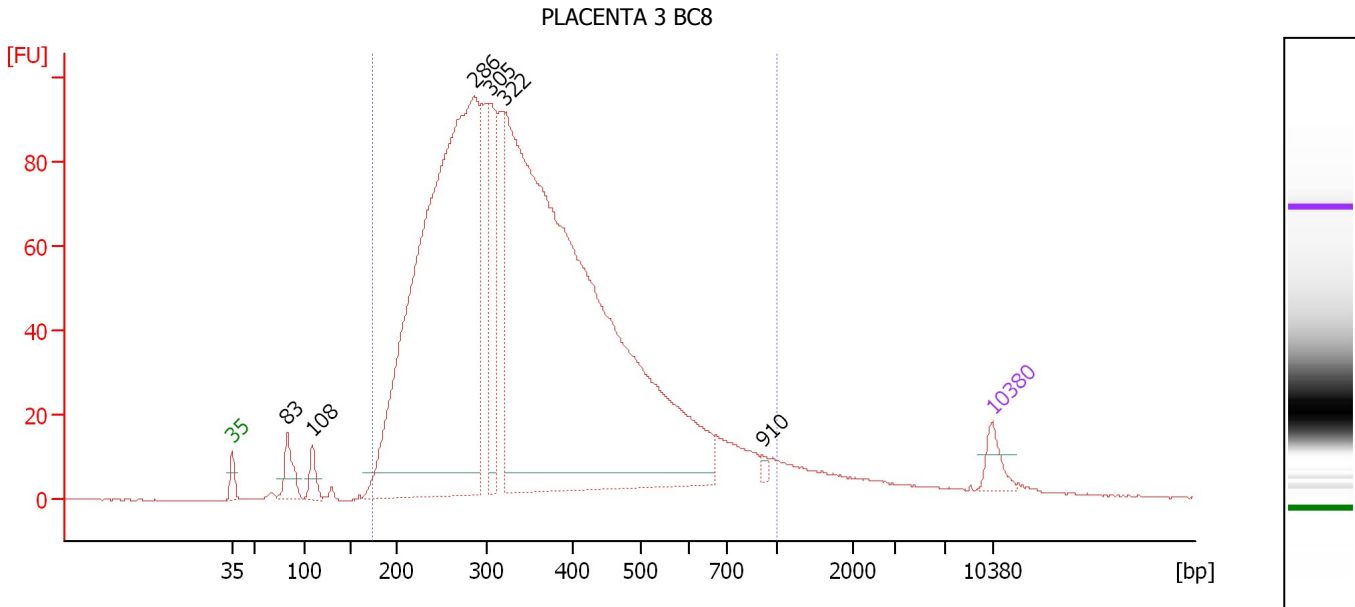
Region table for sample 7 : C3-2

From [bp]	Molarity [pmol/l]	Average Size [bp]	Conc. [pg/μl]	To [bp]	Corr. Area	% of Total	Size distribution in CV [%]	Color
119	52,093.9	270	7,950.32	534	1,429.2	82	34.1	Blue

Assay Class: High Sensitivity DNA Assay
 Data Path: C:\...ents and Settings\Bioanalyzer\2012-02-15\2012-02-15_007.xad

Created: 2/15/2012 1:22:15 PM
 Modified: 2/17/2012 10:40:56 AM

Electropherogram Summary Continued ...



Overall Results for sample 8 : PLACENTA 3 BC8

Number of peaks found: 6 Corr. Area 1: 2,409.2
 Noise: 0.1

Peak table for sample 8 : PLACENTA 3 BC8

Peak	Size [bp]	Conc. [pg/μl]	Molarity [pmol/l]	Observations
1	35	125.00	5,411.3	Lower Marker
2	83	195.76	3,593.0	
3	108	119.09	1,674.8	
4	286	4,824.88	25,521.9	
5	305	563.46	2,803.6	
6	322	6,399.17	30,125.0	
7	910	22.12	36.8	
8	10,380	75.00	10.9	Upper Marker

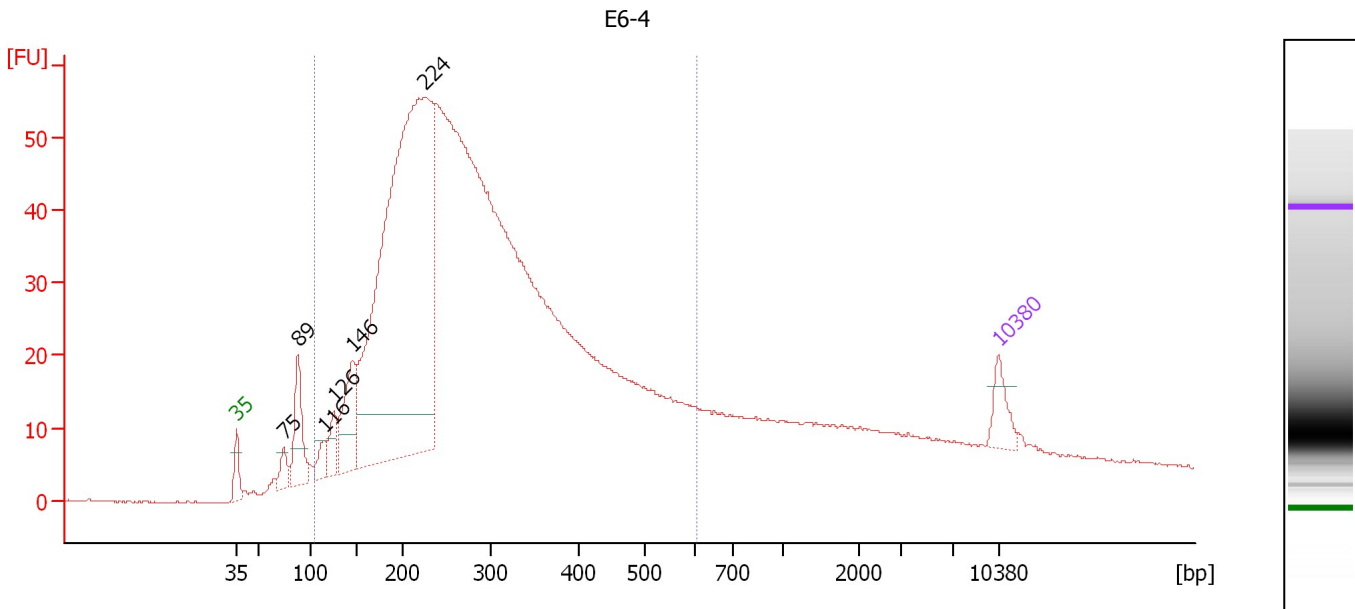
Region table for sample 8 : PLACENTA 3 BC8

From [bp]	Molarity [pmol/l]	Average Size [bp]	Conc. [pg/μl]	To [bp]	Corr. Area	% of Total	Size distribution in CV [%]	Color
174	62,571.3	363	12,960.80	1,000	2,409.2	95	36.8	Blue

Assay Class: High Sensitivity DNA Assay
 Data Path: C:\...ents and Settings\Bioanalyzer\2012-02-15\2012-02-15_007.xad

Created: 2/15/2012 1:22:15 PM
 Modified: 2/17/2012 10:40:56 AM

Electropherogram Summary Continued ...



Overall Results for sample 9 : E6-4

Number of peaks found: 6 Corr. Area 1: 1,383.5
 Noise: 0.1

Peak table for sample 9 : E6-4

Peak	Size [bp]	Conc. [pg/μl]	Molarity [pmol/l]	Observations
1	35	125.00	5,411.3	Lower Marker
2	75	81.02	1,644.9	
3	89	279.31	4,775.5	
4	116	72.73	953.8	
5	126	115.91	1,395.1	
6	146	312.23	3,240.1	
7	224	3,331.57	22,499.2	
8	10,380	75.00	10.9	Upper Marker

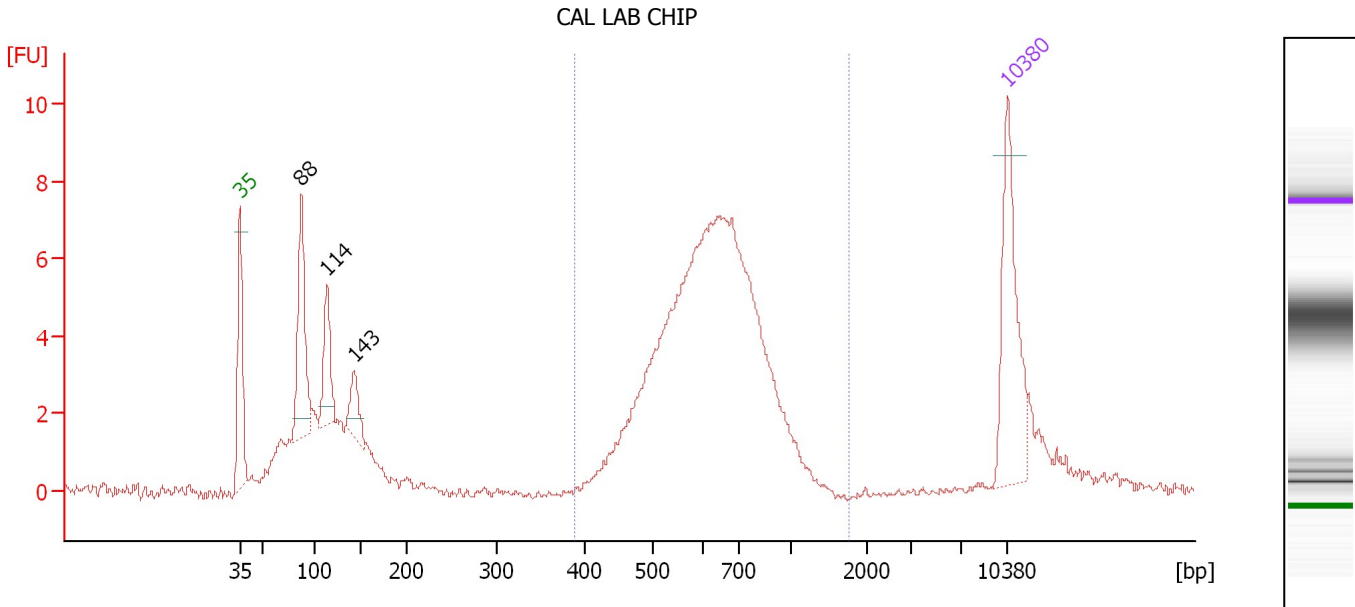
Region table for sample 9 : E6-4

From [bp]	Molarity [pmol/l]	Average Size [bp]	Conc. [pg/μl]	To [bp]	Corr. Area	% of Total	Size distribution in CV [%]	Color
105	68,797.5	293	11,109.71	604	1,383.5	85	36.1	Blue

Assay Class: High Sensitivity DNA Assay
 Data Path: C:\...ents and Settings\Bioanalyzer\2012-02-15\2012-02-15_007.xad

Created: 2/15/2012 1:22:15 PM
 Modified: 2/17/2012 10:40:56 AM

Electropherogram Summary Continued ...



Setpoint Deviations for sample 10 : CAL LAB CHIP

Height Threshold [FU] : 0.5

Overall Results for sample 10 : CAL LAB CHIP

Number of peaks found: 3 Corr. Area 1: 83.8
 Noise: 0.1

Peak table for sample 10 : CAL LAB CHIP

Peak	Size [bp]	Conc. [pg/μl]	Molarity [pmol/l]	Observations
1	35	125.00	5,411.3	Lower Marker
2	88	107.85	1,863.4	
3	114	54.96	732.1	
4	143	31.51	332.9	
5	10,380	75.00	10.9	Upper Marker

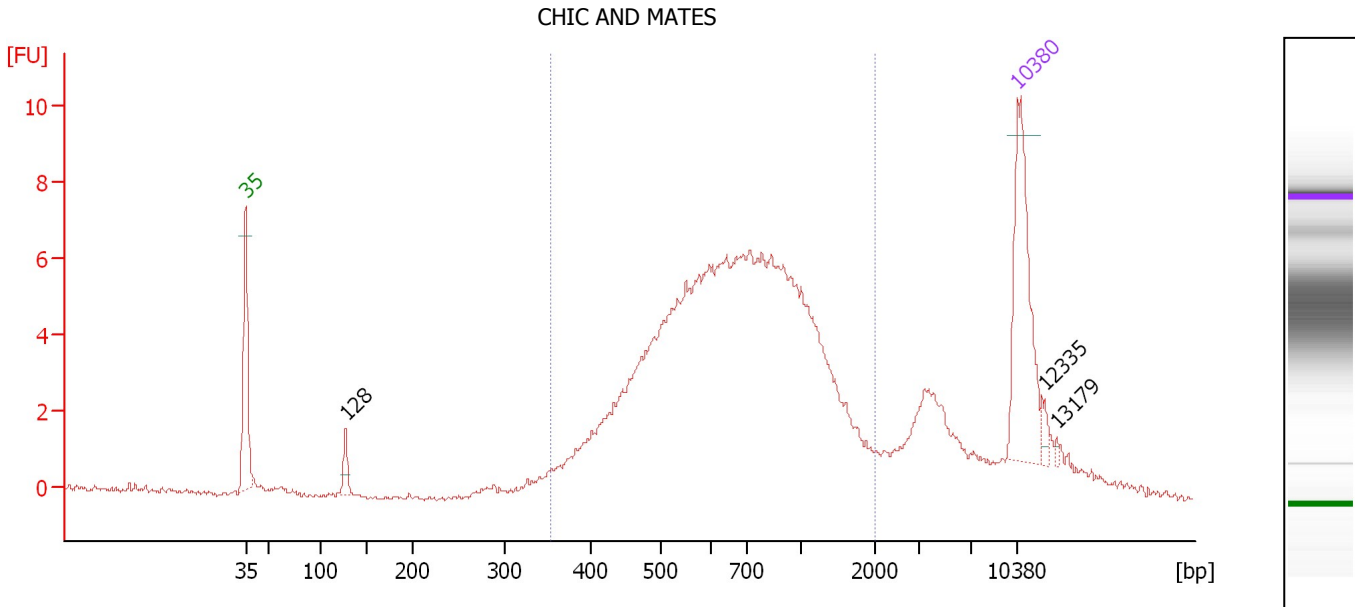
Region table for sample 10 : CAL LAB CHIP

From [bp]	Molarity [pmol/l]	Average Size [bp]	Conc. [pg/μl]	To [bp]	Corr. Area	% of Total	Size distribution in CV [%]	Color
391	1,582.8	650	642.29	1,766	83.8	60	22.8	Blue

Assay Class: High Sensitivity DNA Assay
 Data Path: C:\...ents and Settings\Bioanalyzer\2012-02-15\2012-02-15_007.xad

Created: 2/15/2012 1:22:15 PM
 Modified: 2/17/2012 10:40:56 AM

Electropherogram Summary Continued ...



Setpoint Deviations for sample 11 : CHIC AND MATES

Height Threshold [FU] : 0.5 Width Threshold [s] : 0.3

Overall Results for sample 11 : CHIC AND MATES

Number of peaks found: 3 Corr. Area 1: 124.6
 Noise: 0.1

Peak table for sample 11 : CHIC AND MATES

Peak	Size [bp]	Conc. [pg/μl]	Molarity [pmol/l]	Observations
1	35	125.00	5,411.3	Lower Marker
2	128	14.81	175.4	
3	10,380	75.00	10.9	Upper Marker
4	12,335	0.00	0.0	
5	13,179	0.00	0.0	

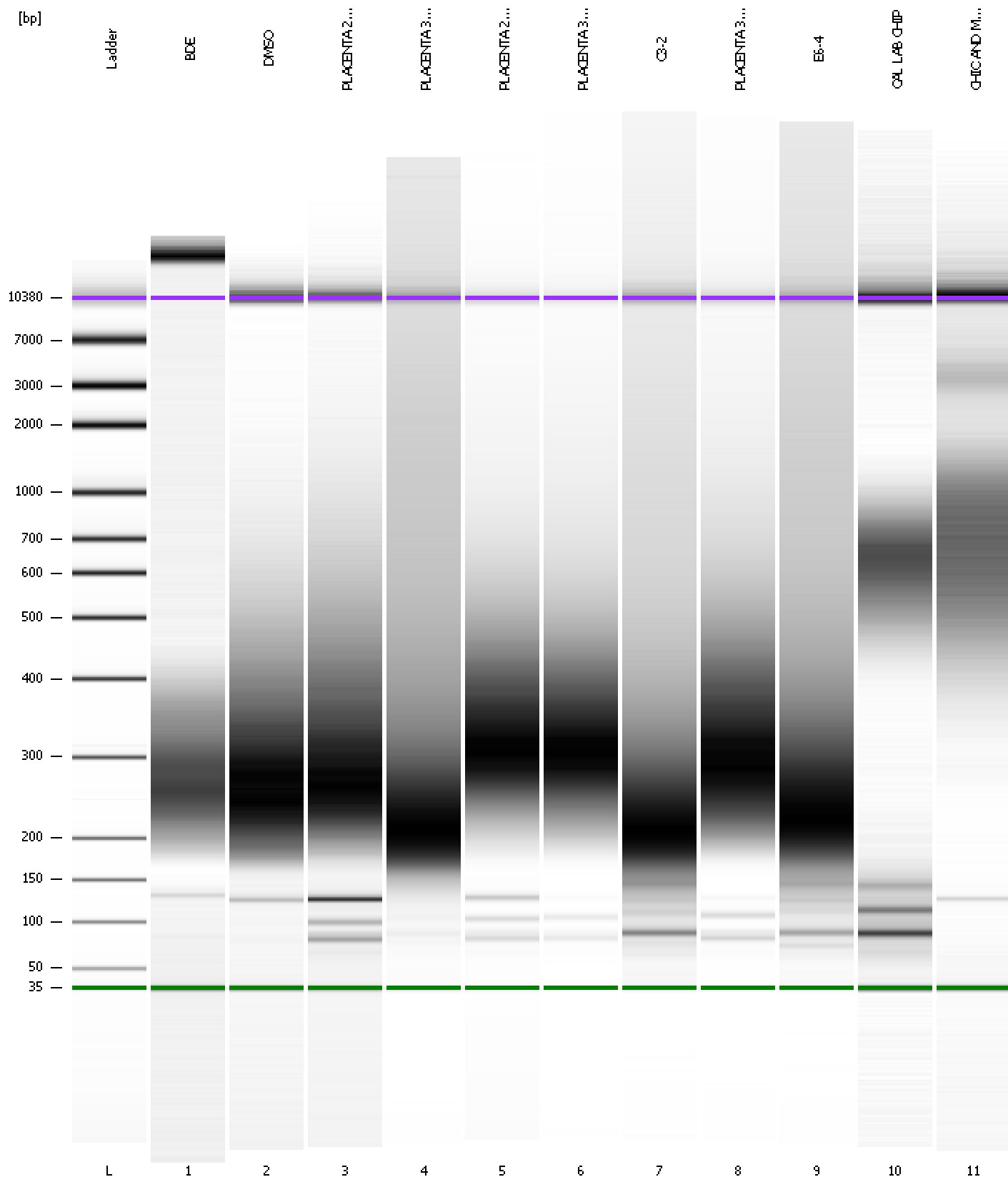
Region table for sample 11 : CHIC AND MATES

From [bp]	Molarity [pmol/l]	Average Size [bp]	Conc. [pg/μl]	To [bp]	Corr. Area	% of Total	Size distribution in CV [%]	Color
354	2,201.3	767	925.75	2,012	124.6	83	43.6	Blue

Assay Class: High Sensitivity DNA Assay
Data Path: C:\...ents and Settings\Bioanalyzer\2012-02-15\2012-02-15_007.xad

Created: 2/15/2012 1:22:15 PM
Modified: 2/17/2012 10:40:56 AM

Gel Image



Assay Class: High Sensitivity DNA Assay
 Data Path: C:\...ents and Settings\Bioanalyzer\2012-02-15\2012-02-15_007.xad

Created: 2/15/2012 1:22:15 PM
 Modified: 2/17/2012 10:40:56 AM

Run Logbook

Description	Number	Source	Category	Sub Category	Time	Time Zone	User	Host
Run ended on port 1 (Number of wells acquired: 12)		Instrument	Run		2/15/2012 2:03:27 PM	(GMT --08:00) Pacific Standard Time	UC Davis	D8XSMGH1
Run started on port 1 (File: C:\Documents and Settings\Bioanalyzer\2012-02-15\2012-02-15_007.xad)		Instrument	Run		2/15/2012 1:22:15 PM	(GMT --08:00) Pacific Standard Time	UC Davis	D8XSMGH1
Product Number : G2938B		Instrument	Run		2/15/2012 1:22:15 PM	(GMT --08:00) Pacific Standard Time	UC Davis	D8XSMGH1
Name :		Instrument	Run		2/15/2012 1:22:15 PM	(GMT --08:00) Pacific Standard Time	UC Davis	D8XSMGH1
Vendor : Agilent Technologies		Instrument	Run		2/15/2012 1:22:15 PM	(GMT --08:00) Pacific Standard Time	UC Davis	D8XSMGH1
Serial# : DE13701086		Instrument	Run		2/15/2012 1:22:15 PM	(GMT --08:00) Pacific Standard Time	UC Davis	D8XSMGH1
Firmware : C.01.069		Instrument	Run		2/15/2012 1:22:15 PM	(GMT --08:00) Pacific Standard Time	UC Davis	D8XSMGH1
Cartridge : Electrode		Instrument	Run		2/15/2012 1:22:15 PM	(GMT --08:00) Pacific Standard Time	UC Davis	D8XSMGH1