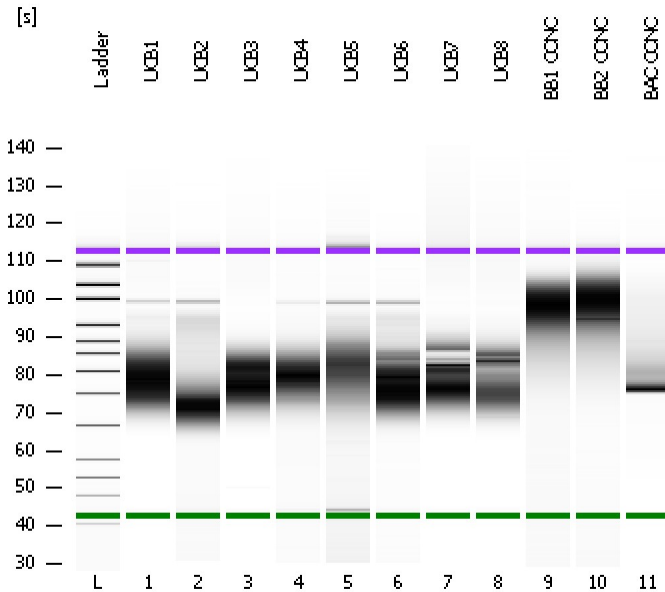


Assay Class: High Sensitivity DNA Assay
Data Path: C:\...ents and Settings\Bioanalyzer\2012-02-15\2012-02-15_008.xad

Created: 2/15/2012 2:19:03 PM
Modified: 2/15/2012 4:03:40 PM

Electrophoresis File Run Summary



Instrument Information:

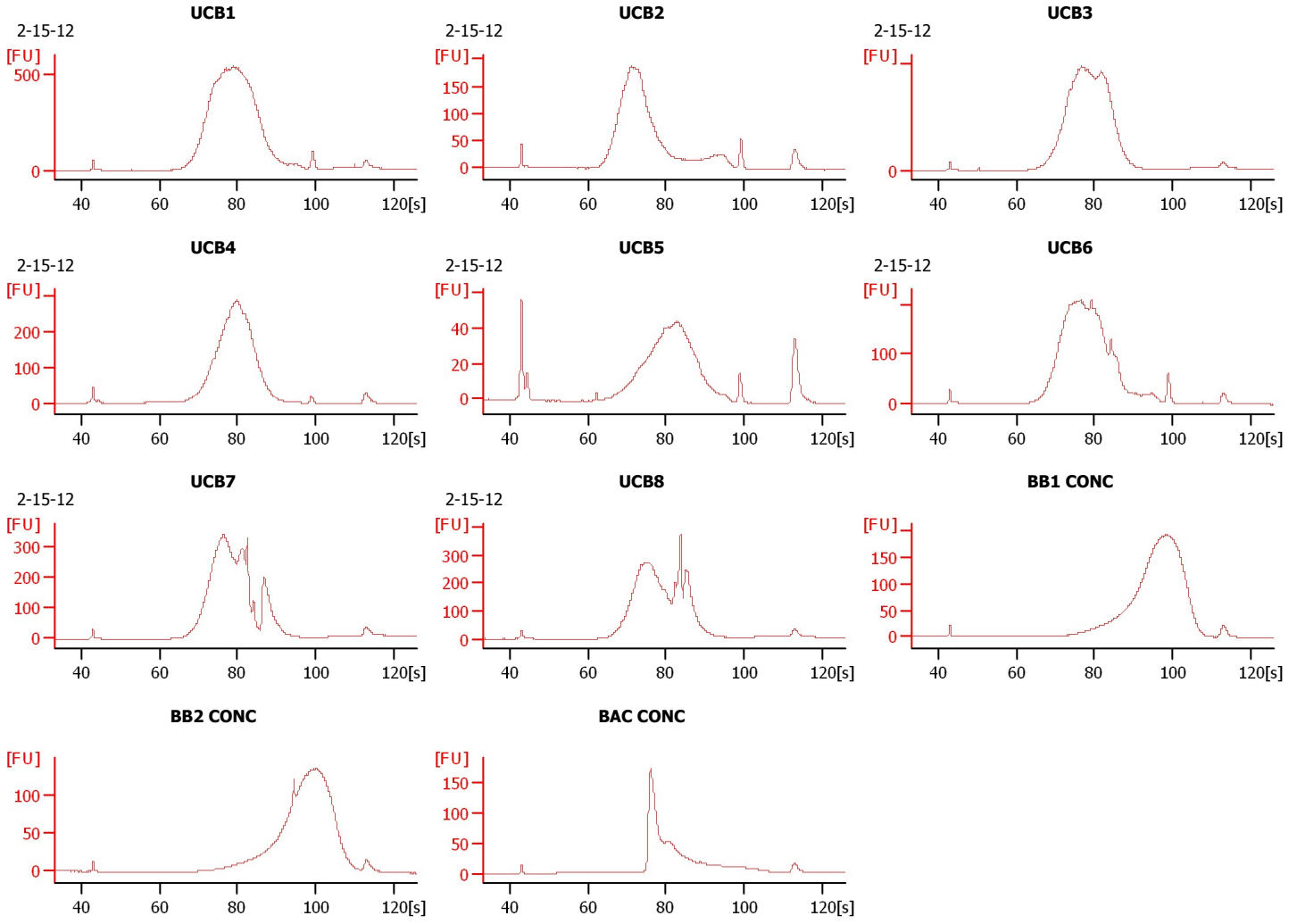
Instrument Name: DE13701086 Firmware: C.01.069
Serial#: DE13701086 Type: G2938B

Assay Information:

Assay Origin Path: C:\Program Files\Agilent\2100 bioanalyzer\2100 expert\assays\dsDNA\High Sensitivity DNA.xsy
Assay Class: High Sensitivity DNA Assay
Version: 1.03
Assay Comments: Copyright © 2003-2010 Agilent Technologies

Chip Information:

Chip Lot #:
Reagent Kit Lot #:
Chip Comments:



Assay Class: High Sensitivity DNA Assay
 Data Path: C:\...ents and Settings\Bioanalyzer\2012-02-15\2012-02-15_008.xad

Created: 2/15/2012 2:19:03 PM
 Modified: 2/15/2012 4:03:40 PM

Electrophoresis File Run Summary (Chip Summary)

Sample Name	Sample Comment	Rest. Digest	Status	Observation	Result Label	Result Color
UCB1	2-15-12	<input type="checkbox"/>	✓			
UCB2	2-15-12	<input type="checkbox"/>	✓			
UCB3	2-15-12	<input type="checkbox"/>	✓			
UCB4	2-15-12	<input type="checkbox"/>	✓			
UCB5	2-15-12	<input type="checkbox"/>	✓			
UCB6	2-15-12	<input type="checkbox"/>	✓			
UCB7	2-15-12	<input type="checkbox"/>	✓			
UCB8	2-15-12	<input type="checkbox"/>	✓			
BB1 CONC		<input type="checkbox"/>	✓			
BB2 CONC		<input type="checkbox"/>	✓			
BAC CONC		<input type="checkbox"/>	✓			
Ladder		<input type="checkbox"/>	✓			

Chip Lot #

Reagent Kit Lot #

Chip Comments :

Assay Class: High Sensitivity DNA Assay
Data Path: C:\...ents and Settings\Bioanalyzer\2012-02-15\2012-02-15_008.xad

Created: 2/15/2012 2:19:03 PM
Modified: 2/15/2012 4:03:40 PM

Electrophoresis Assay Details

General Analysis Settings

Number of Available Sample and Ladder Wells (Max.) : 12
Minimum Visible Range [s] : 32
Maximum Visible Range [s] : 138
Start Analysis Time Range [s] : 33
End Analysis Time Range [s] : 137.5
Ladder Concentration [pg/μl] : 1950
Uses Standard Area for Ladder Fragments
Lower Marker Concentration [pg/μl] : 125
Upper Marker Concentration [pg/μl] : 75
Used Upper Marker for Quantitation
Standard Curve Fit is Point to Point
Show Data Aligned to Lower and Upper Marker

Integrator Settings

Integration Start Time [s] : 33.05
Integration End Time [s] : 137
Slope Threshold : 0.8
Height Threshold [FU] : 5
Area Threshold : 0.1
Width Threshold [s] : 0.6
Baseline Plateau [s] : 0.5

Filter Settings

Filter Width [s] : 0.5
Polynomial Order : 4

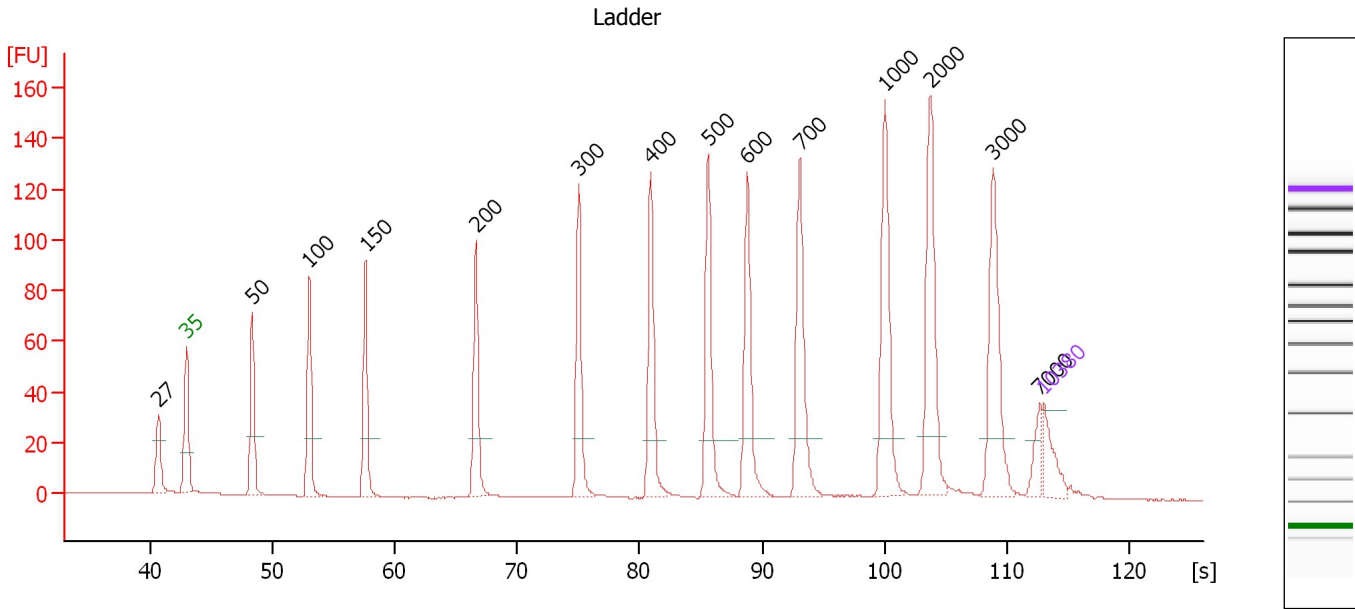
Ladder

Ladder Peak	Size	Area
1	35	160
2	50	210
3	100	208
4	150	221
5	200	242
6	300	270
7	400	305
8	500	306
9	600	336
10	700	321
11	1000	366
12	2000	413
13	3000	411
14	7000	400
15	10380	214

Assay Class: High Sensitivity DNA Assay
 Data Path: C:\...ents and Settings\Bioanalyzer\2012-02-15\2012-02-15_008.xad

Created: 2/15/2012 2:19:03 PM
 Modified: 2/15/2012 4:03:40 PM

Electropherogram Summary



Overall Results for Ladder

Noise: 0.1

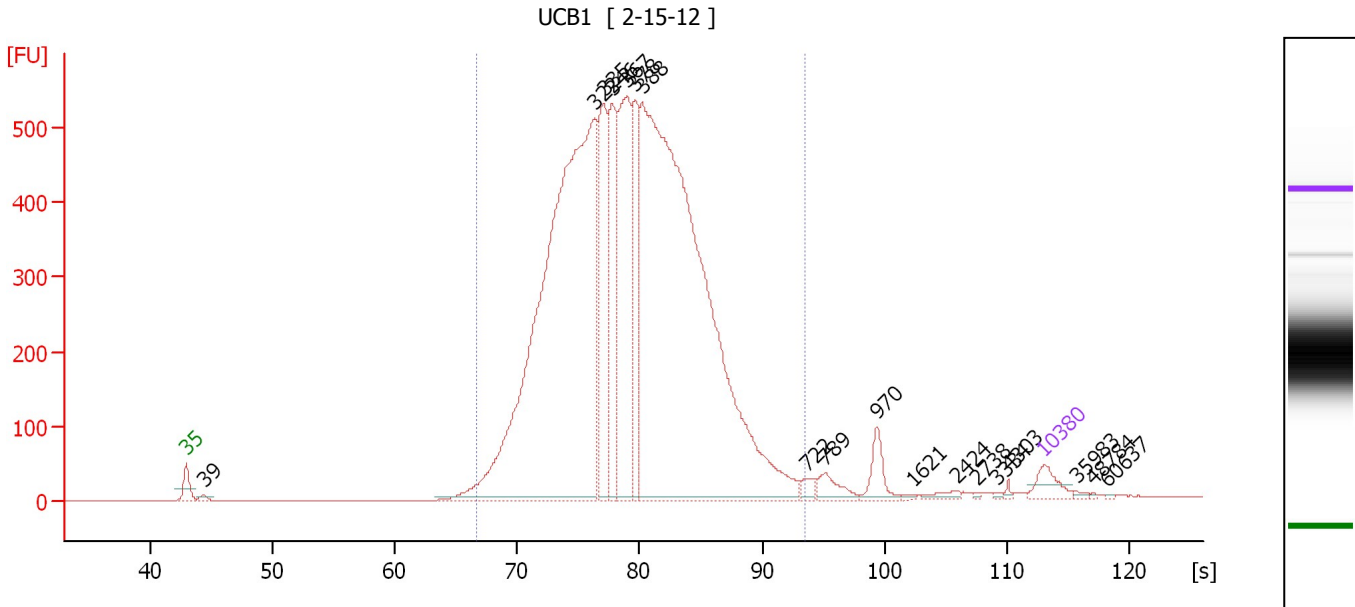
Peak table for Ladder

Peak	Size [bp]	Conc. [pg/μl]	Molarity [pmol/l]	Observations
1	27	0.00	0.0	
2	35	125.00	5,411.3	Lower Marker
3	50	150.00	4,545.5	Ladder Peak
4	100	150.00	2,272.7	Ladder Peak
5	150	150.00	1,515.2	Ladder Peak
6	200	150.00	1,136.4	Ladder Peak
7	300	150.00	757.6	Ladder Peak
8	400	150.00	568.2	Ladder Peak
9	500	150.00	454.5	Ladder Peak
10	600	150.00	378.8	Ladder Peak
11	700	150.00	324.7	Ladder Peak
12	1,000	150.00	227.3	Ladder Peak
13	2,000	150.00	113.6	Ladder Peak
14	3,000	150.00	75.8	Ladder Peak
15	7,000	150.00	32.5	Ladder Peak
16	10,380	75.00	10.9	Upper Marker

Assay Class: High Sensitivity DNA Assay
 Data Path: C:\...ents and Settings\Bioanalyzer\2012-02-15\2012-02-15_008.xad

Created: 2/15/2012 2:19:03 PM
 Modified: 2/15/2012 4:03:40 PM

Electropherogram Summary Continued ...



Overall Results for sample 1 : UCB1

Number of peaks found: 18 Corr. Area 1: 9,641.8
 Noise: 0.1

Peak table for sample 1 : UCB1

Peak	Size [bp]	Conc. [pg/μl]	Molarity [pmol/l]	Observations
1	35	125.00	5,411.3	Lower Marker
2	39	22.89	890.2	
3	322	4,676.22	21,978.7	
4	335	757.25	3,427.5	
5	346	699.32	3,059.7	
6	367	1,023.43	4,226.1	
7	378	541.81	2,173.8	
8	388	5,059.46	19,738.2	
9	722	45.29	95.1	
10	789	87.12	167.3	
11	970	112.49	175.7	
12	1,621	8.90	8.3	
13	2,424	25.93	16.2	
14	2,738	5.33	3.0	
15	3,334	7.02	3.2	
16	4,303	8.82	3.1	
17	10,380	75.00	10.9	Upper Marker
18	35,983	0.00	0.0	
19	48,784	0.00	0.0	
20	60,637	0.00	0.0	

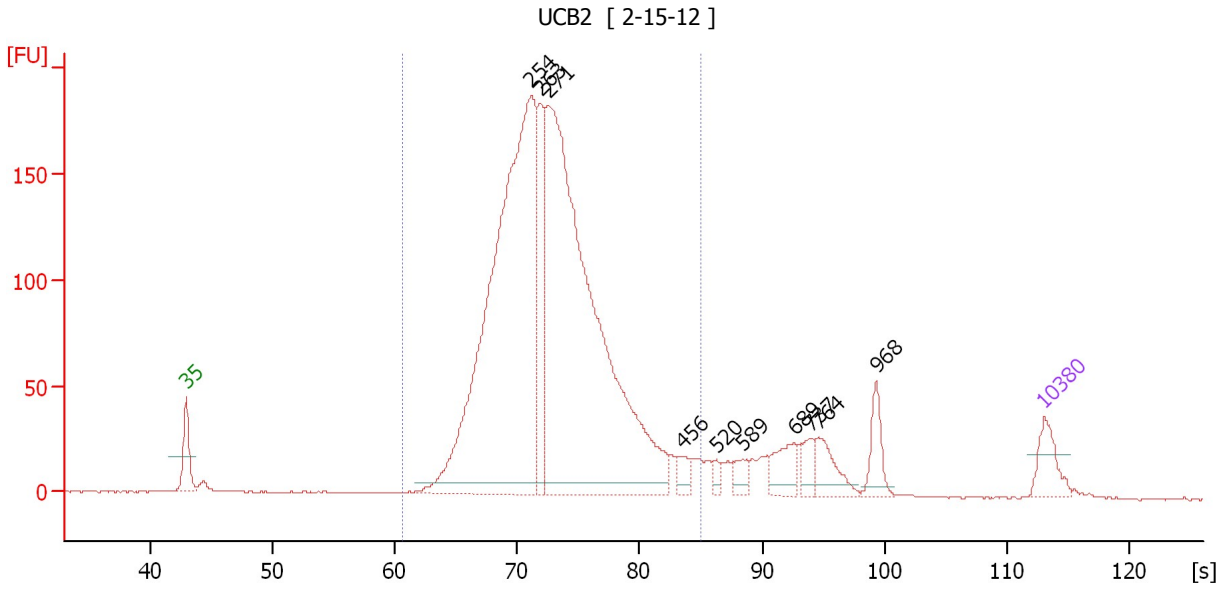
Region table for sample 1 : UCB1

From [s]	Molarity [pmol/l]	Average Size [bp]	Conc. [pg/μl]	To [s]	Corr. Area	% of Total	Size distribution in CV [%]	Color
66.63	55,683.0	378	12,813.87	93.49	9,641.8	96	25.1	Blue

Assay Class: High Sensitivity DNA Assay
 Data Path: C:\...ents and Settings\Bioanalyzer\2012-02-15\2012-02-15_008.xad

Created: 2/15/2012 2:19:03 PM
 Modified: 2/15/2012 4:03:40 PM

Electropherogram Summary Continued ...



Overall Results for sample 2 : UCB2

Number of peaks found: 10 Corr. Area 1: 2,455.9
 Noise: 0.2

Peak table for sample 2 : UCB2

Peak	Size [bp]	Conc. [pg/μl]	Molarity [pmol/l]	Observations
1	35	125.00	5,411.3	Lower Marker
2	254	2,421.23	14,452.8	
3	263	359.50	2,074.1	
4	271	2,503.83	14,008.8	
5	456	43.15	143.5	
6	520	21.80	63.5	
7	589	43.85	112.7	
8	689	98.69	217.0	
9	737	53.14	109.3	
10	764	98.80	195.9	
11	968	83.72	131.1	
12	10,380	75.00	10.9	Upper Marker

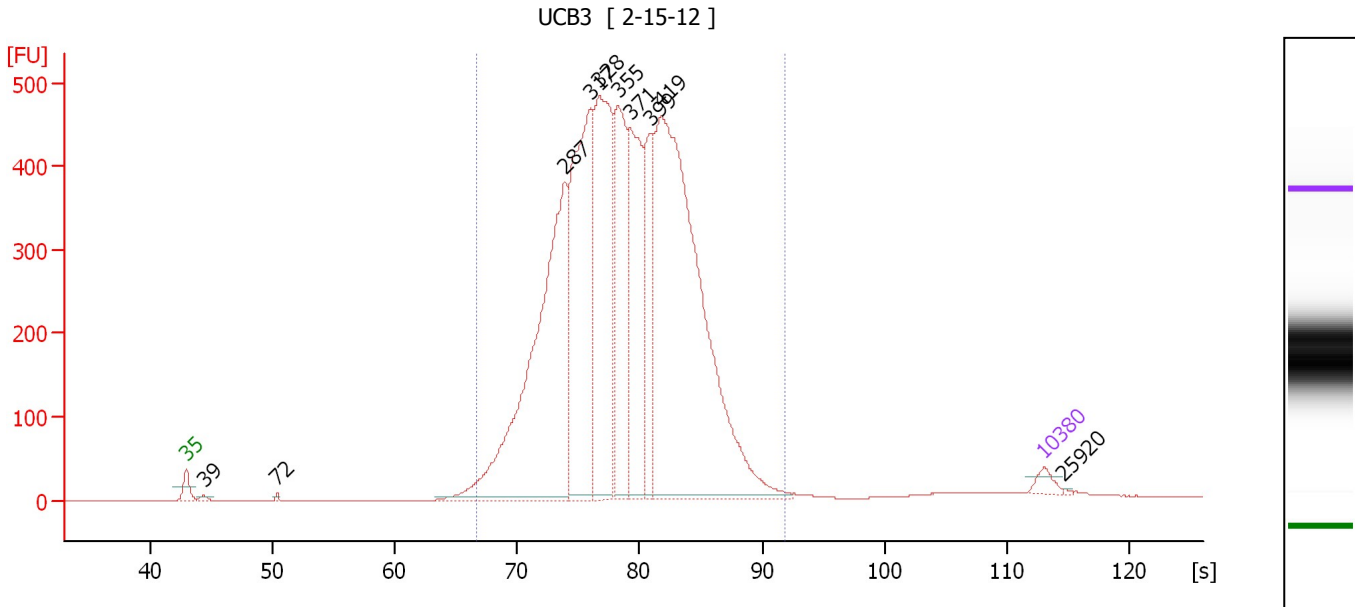
Region table for sample 2 : UCB2

From [s]	Molarity [pmol/l]	Average Size [bp]	Conc. [pg/μl]	To [s]	Corr. Area	% of Total	Size distribution in CV [%]	Color
60.72	30,929.9	277	5,398.38	85.00	2,455.9	87	21.0	Blue

Assay Class: High Sensitivity DNA Assay
 Data Path: C:\...ents and Settings\Bioanalyzer\2012-02-15\2012-02-15_008.xad

Created: 2/15/2012 2:19:03 PM
 Modified: 2/15/2012 4:03:40 PM

Electropherogram Summary Continued ...



Overall Results for sample 3 : UCB3

Number of peaks found: 10 Corr. Area 1: 8,019.8
 Noise: 0.1

Peak table for sample 3 : UCB3

Peak	Size [bp]	Conc. [pg/μl]	Molarity [pmol/l]	Observations
1	35	125.00	5,411.3	Lower Marker
2	39	36.07	1,399.6	
3	72	21.18	444.1	
4	287	4,650.68	24,577.4	
5	317	3,130.52	14,981.0	
6	328	2,634.23	12,151.9	
7	355	1,743.63	7,449.3	
8	371	1,732.11	7,079.6	
9	399	1,048.64	3,977.7	
10	419	6,143.17	22,238.4	
11	10,380	75.00	10.9	Upper Marker
12	25,920	0.00	0.0	

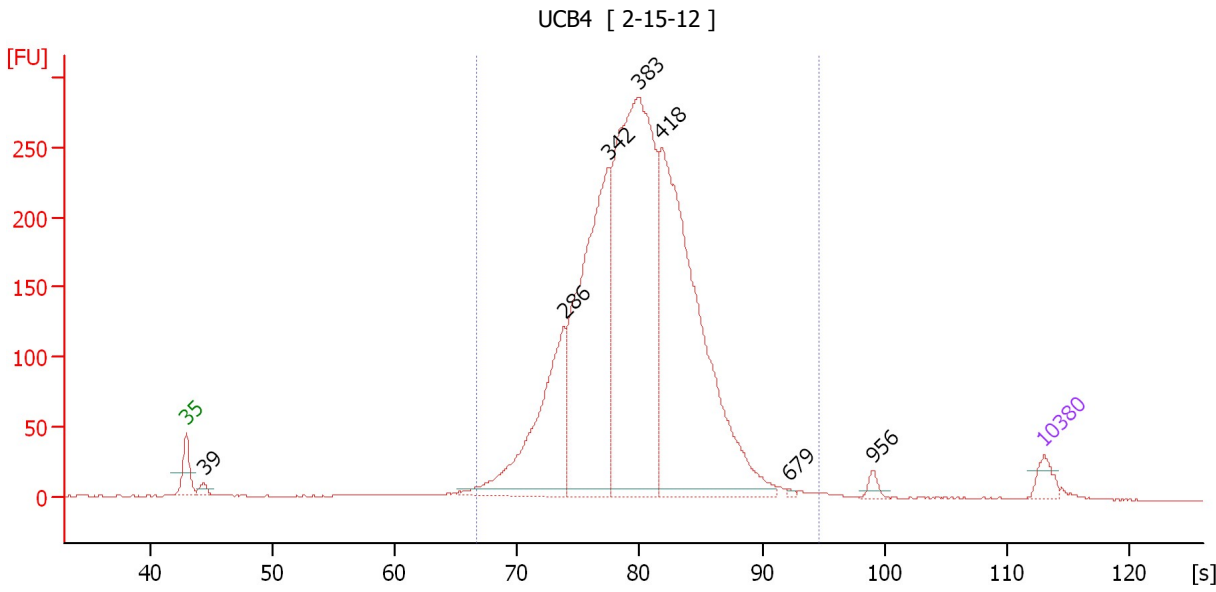
Region table for sample 3 : UCB3

From [s]	Molarity [pmol/l]	Average Size [bp]	Conc. [pg/μl]	To [s]	Corr. Area	% of Total	Size distribution in CV [%]	Color
66.63	93,454.2	369	21,256.66	91.81	8,019.8	97	22.7	Blue

Assay Class: High Sensitivity DNA Assay
 Data Path: C:\...ents and Settings\Bioanalyzer\2012-02-15\2012-02-15_008.xad

Created: 2/15/2012 2:19:03 PM
 Modified: 2/15/2012 4:03:40 PM

Electropherogram Summary Continued ...



Overall Results for sample 4 : UCB4

Number of peaks found: 7 Corr. Area 1: 3,798.3
 Noise: 0.3

Peak table for sample 4 : UCB4

Peak	Size [bp]	Conc. [pg/μl]	Molarity [pmol/l]	Observations
1	35	125.00	5,411.3	Lower Marker
2	39	57.57	2,239.5	
3	286	1,369.82	7,251.5	
4	342	2,268.97	10,055.5	
5	383	3,433.45	13,587.7	
6	418	3,070.91	11,123.7	
7	679	9.58	21.4	
8	956	40.76	64.6	
9	10,380	75.00	10.9	Upper Marker

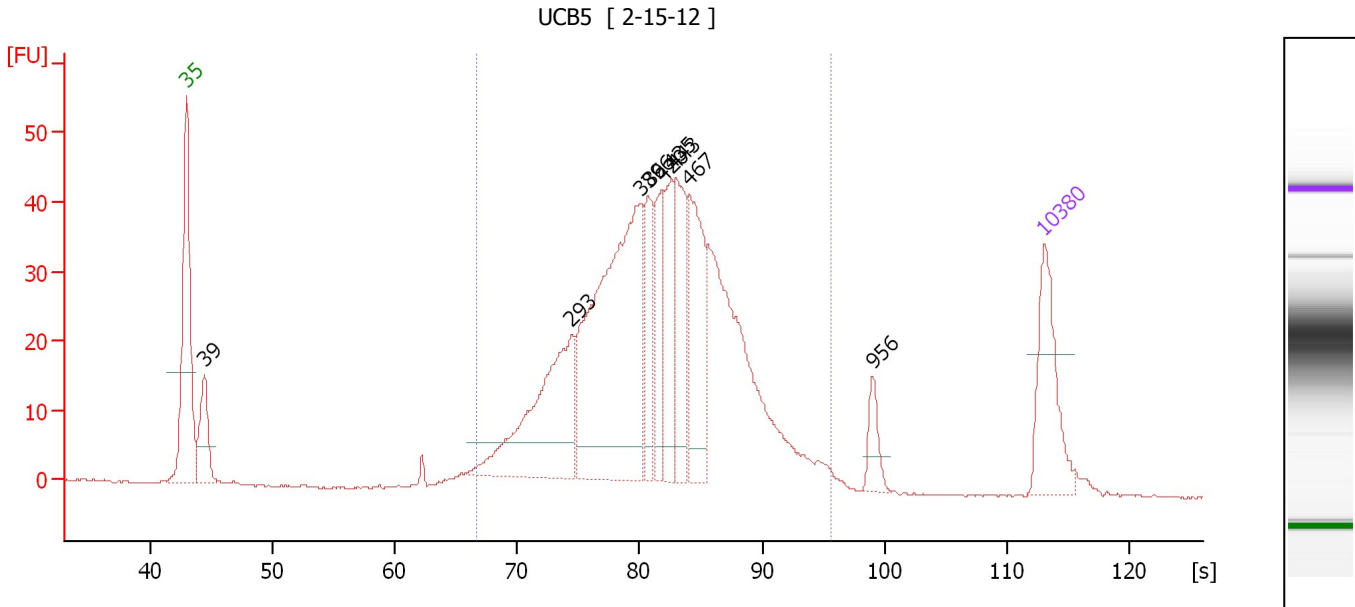
Region table for sample 4 : UCB4

From [s]	Molarity [pmol/l]	Average Size [bp]	Conc. [pg/μl]	To [s]	Corr. Area	% of Total	Size distribution in CV [%]	Color
66.63	43,710.4	385	10,449.39	94.64	3,798.3	96	22.0	Blue

Assay Class: High Sensitivity DNA Assay
 Data Path: C:\...ents and Settings\Bioanalyzer\2012-02-15\2012-02-15_008.xad

Created: 2/15/2012 2:19:03 PM
 Modified: 2/15/2012 4:03:40 PM

Electropherogram Summary Continued ...



Overall Results for sample 5 : UCB5

Number of peaks found: 9 Corr. Area 1: 766.6
 Noise: 0.1

Peak table for sample 5 : UCB5

Peak	Size [bp]	Conc. [pg/μl]	Molarity [pmol/l]	Observations
1	35	125.00	5,411.3	Lower Marker
2	39	78.24	3,030.0	
3	293	227.60	1,176.5	
4	386	415.31	1,631.6	
5	396	73.59	281.6	
6	420	68.65	247.7	
7	435	86.05	299.6	
8	443	95.24	325.9	
9	467	133.92	434.7	
10	956	25.16	39.9	
11	10,380	75.00	10.9	Upper Marker

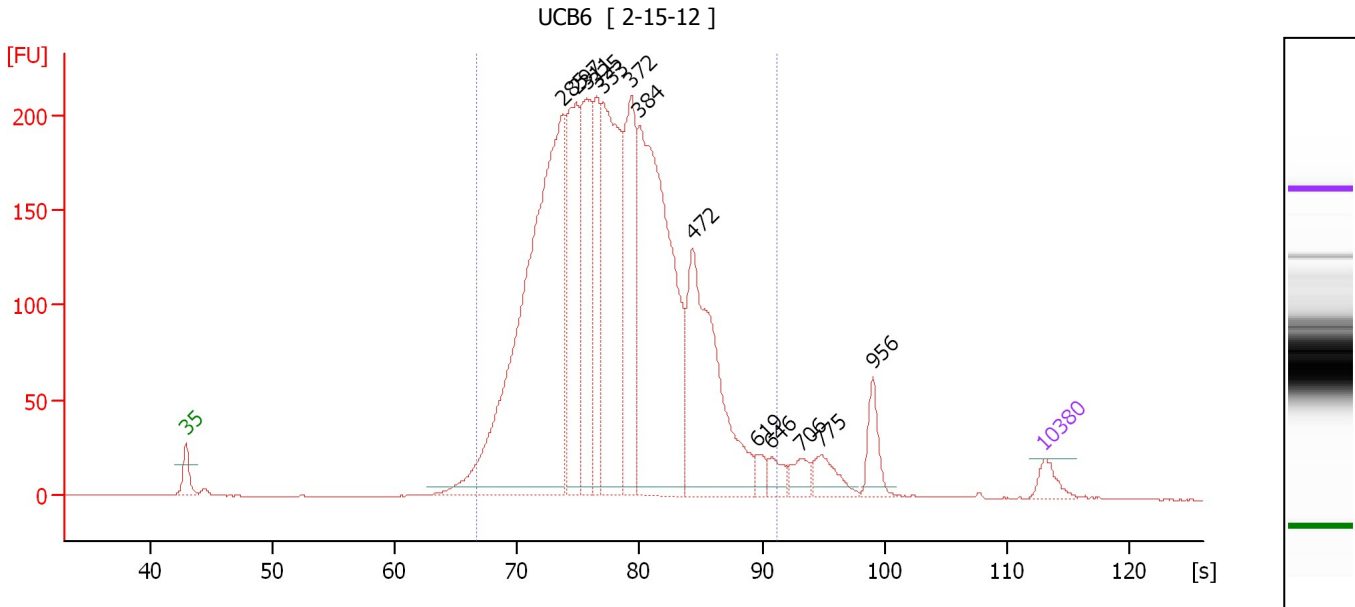
Region table for sample 5 : UCB5

From [s]	Molarity [pmol/l]	Average Size [bp]	Conc. [pg/μl]	To [s]	Corr. Area	% of Total	Size distribution in CV [%]	Color
66.63	6,181.9	424	1,556.42	95.63	766.6	93	27.4	Blue

Assay Class: High Sensitivity DNA Assay
 Data Path: C:\...ents and Settings\Bioanalyzer\2012-02-15\2012-02-15_008.xad

Created: 2/15/2012 2:19:03 PM
 Modified: 2/15/2012 4:03:40 PM

Electropherogram Summary Continued ...



Overall Results for sample 6 : UCB6

Number of peaks found: 13 Corr. Area 1: 3,744.6
 Noise: 0.2

Peak table for sample 6 : UCB6

Peak	Size [bp]	Conc. [pg/μl]	Molarity [pmol/l]	Observations
1	35	125.00	5,411.3	Lower Marker
2	285	4,032.93	21,440.1	
3	297	1,157.38	5,899.5	
4	311	1,039.92	5,068.6	
5	325	660.13	3,079.6	
6	333	1,612.76	7,327.8	
7	372	1,024.68	4,176.7	
8	384	2,536.46	10,011.0	
9	472	1,473.45	4,729.4	
10	619	73.50	180.0	
11	646	94.78	222.3	
12	706	106.81	229.3	
13	775	155.00	303.2	
14	956	173.07	274.2	
15	10,380	75.00	10.9	Upper Marker

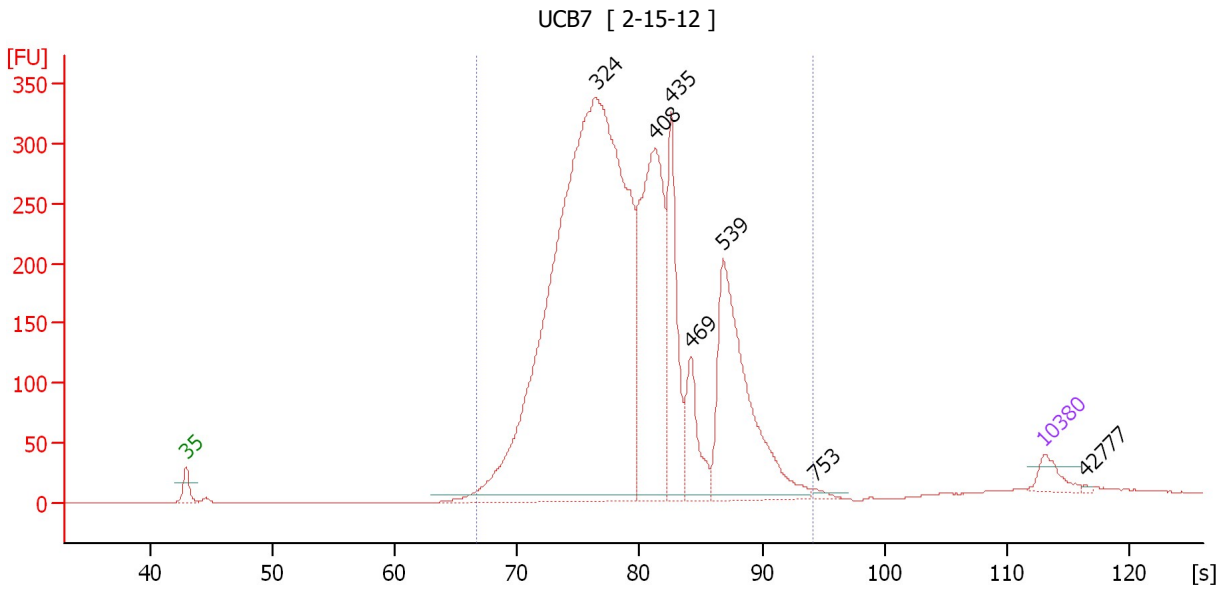
Region table for sample 6 : UCB6

From [s]	Molarity [pmol/l]	Average Size [bp]	Conc. [pg/μl]	To [s]	Corr. Area	% of Total	Size distribution in CV [%]	Color
66.63	63,664.7	356	13,818.66	91.14	3,744.6	94	25.2	Blue

Assay Class: High Sensitivity DNA Assay
 Data Path: C:\...ents and Settings\Bioanalyzer\2012-02-15\2012-02-15_008.xad

Created: 2/15/2012 2:19:03 PM
 Modified: 2/15/2012 4:03:40 PM

Electropherogram Summary Continued ...



Overall Results for sample 7 : UCB7

Number of peaks found: 7 Corr. Area 1: 5,009.1
 Noise: 0.1

Peak table for sample 7 : UCB7

Peak	Size [bp]	Conc. [pg/μl]	Molarity [pmol/l]	Observations
1	35	125.00	5,411.3	Lower Marker
2	324	6,172.51	28,826.6	
3	408	1,491.43	5,537.9	
4	435	632.44	2,203.8	
5	469	303.37	979.3	
6	539	1,160.12	3,263.7	
7	753	22.48	45.2	
8	10,380	75.00	10.9	Upper Marker
9	42,777	0.00	0.0	

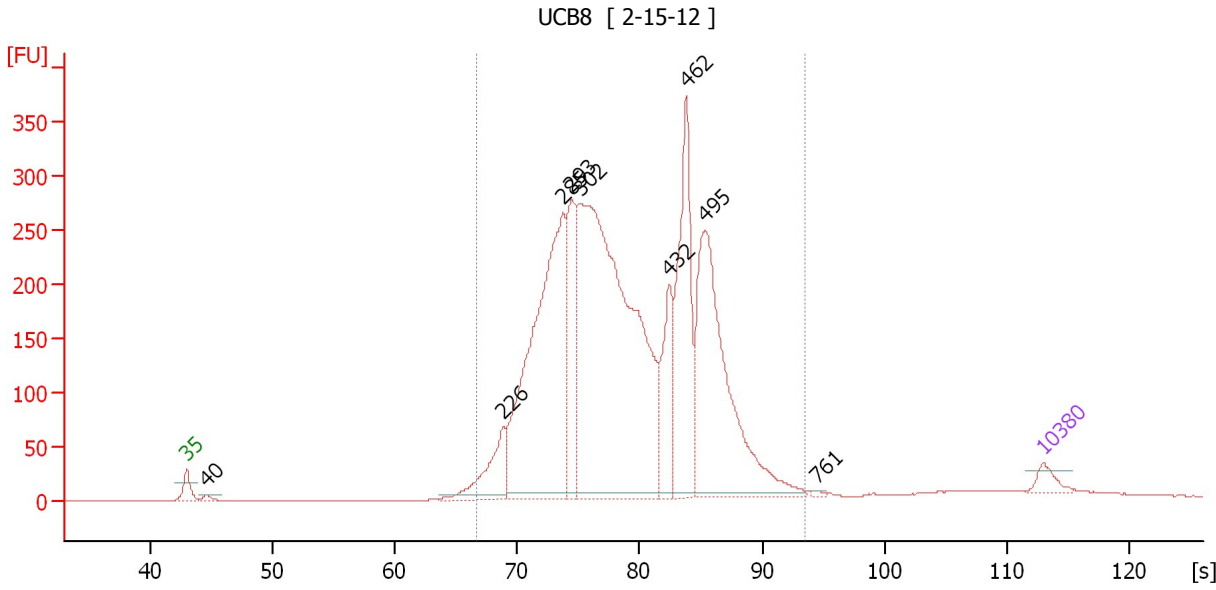
Region table for sample 7 : UCB7

From [s]	Molarity [pmol/l]	Average Size [bp]	Conc. [pg/μl]	To [s]	Corr. Area	% of Total	Size distribution in CV [%]	Color
66.63	43,152.7	380	9,910.69	94.18	5,009.1	96	27.1	Blue

Assay Class: High Sensitivity DNA Assay
 Data Path: C:\...ents and Settings\Bioanalyzer\2012-02-15\2012-02-15_008.xad

Created: 2/15/2012 2:19:03 PM
 Modified: 2/15/2012 4:03:40 PM

Electropherogram Summary Continued ...



Overall Results for sample 8 : UCB8

Number of peaks found: 9 Corr. Area 1: 4,814.5
 Noise: 0.4

Peak table for sample 8 : UCB8

Peak	Size [bp]	Conc. [pg/μl]	Molarity [pmol/l]	Observations
1	35	125.00	5,411.3	Lower Marker
2	40	36.23	1,383.9	
3	226	512.08	3,425.9	
4	285	3,077.69	16,369.3	
5	293	832.64	4,306.5	
6	302	4,967.36	24,893.7	
7	432	579.97	2,036.0	
8	462	1,227.19	4,026.6	
9	495	2,076.02	6,351.0	
10	761	13.48	26.9	
11	10,380	75.00	10.9	Upper Marker

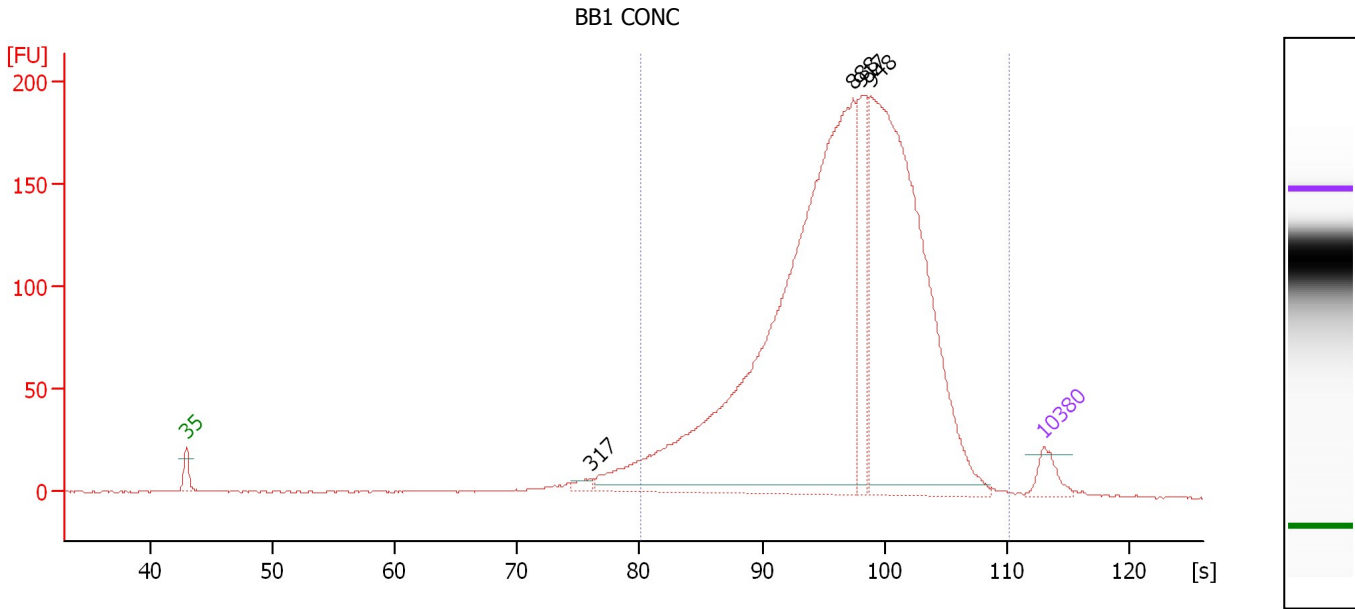
Region table for sample 8 : UCB8

From [s]	Molarity [pmol/l]	Average Size [bp]	Conc. [pg/μl]	To [s]	Corr. Area	% of Total	Size distribution in CV [%]	Color
66.63	57,953.4	376	13,025.28	93.47	4,814.5	96	27.5	Blue

Assay Class: High Sensitivity DNA Assay
 Data Path: C:\...ents and Settings\Bioanalyzer\2012-02-15\2012-02-15_008.xad

Created: 2/15/2012 2:19:03 PM
 Modified: 2/15/2012 4:03:40 PM

Electropherogram Summary Continued ...



Overall Results for sample 9 : BB1 CONC

Number of peaks found: 4 Corr. Area 1: 2,669.8
 Noise: 0.3

Peak table for sample 9 : BB1 CONC

Peak	Size [bp]	Conc. [pg/μl]	Molarity [pmol/l]	Observations
1	35	125.00	5,411.3	Lower Marker
2	317	37.67	180.3	
3	888	3,564.23	6,084.2	
4	917	359.19	593.6	
5	948	2,332.37	3,726.7	
6	10,380	75.00	10.9	Upper Marker

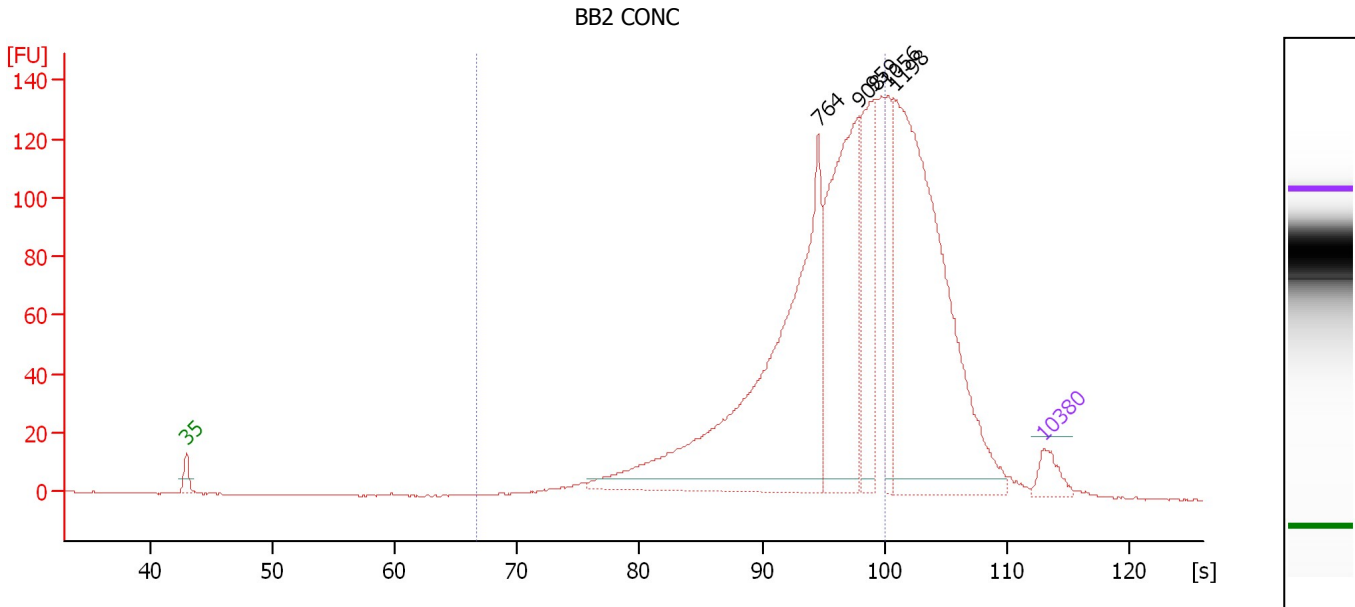
Region table for sample 9 : BB1 CONC

From [s]	Molarity [pmol/l]	Average Size [bp]	Conc. [pg/μl]	To [s]	Corr. Area	% of Total	Size distribution in CV [%]	Color
80.03	12,033.6	1,020	6,530.26	110.17	2,669.8	94	48.8	Blue

Assay Class: High Sensitivity DNA Assay
 Data Path: C:\...ents and Settings\Bioanalyzer\2012-02-15\2012-02-15_008.xad

Created: 2/15/2012 2:19:03 PM
 Modified: 2/15/2012 4:03:40 PM

Electropherogram Summary Continued ...



Overall Results for sample 10 : BB2 CONC

Number of peaks found: 5 Corr. Area 1: 1,271.7
 Noise: 0.1

Peak table for sample 10 : BB2 CONC

Peak	Size [bp]	Conc. [pg/μl]	Molarity [pmol/l]	Observations
1	35	125.00	5,411.3	Lower Marker
2	764	2,075.92	4,116.6	
3	908	1,127.43	1,881.7	
4	959	525.71	830.2	
5	1,056	281.32	403.6	
6	1,198	1,909.67	2,415.5	
7	10,380	75.00	10.9	Upper Marker

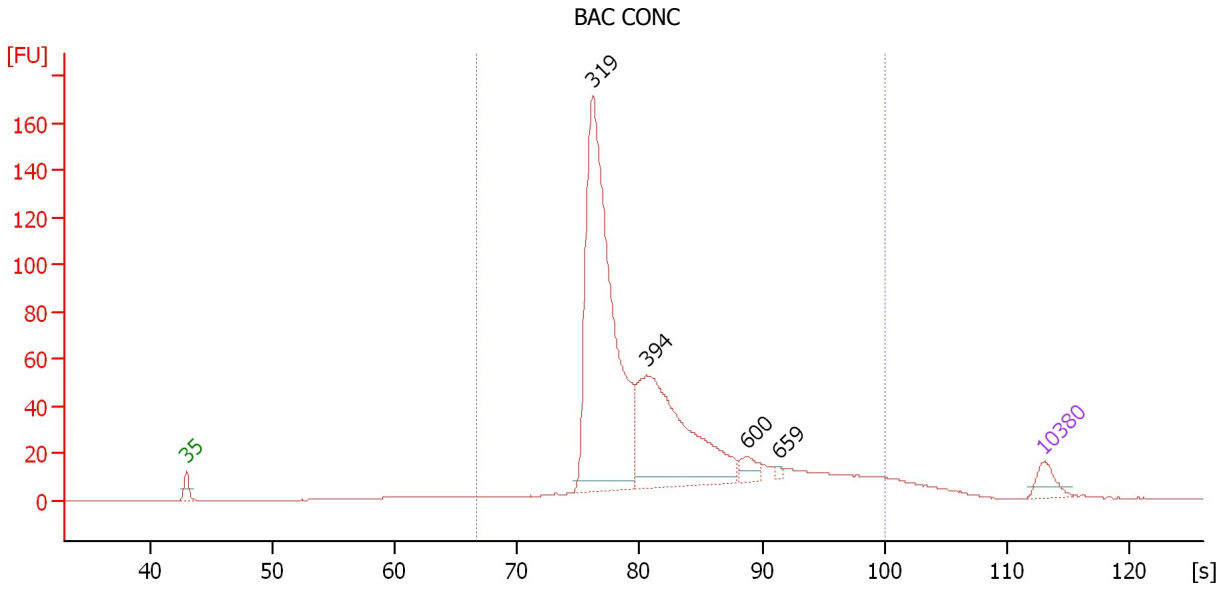
Region table for sample 10 : BB2 CONC

From [s]	Molarity [pmol/l]	Average Size [bp]	Conc. [pg/μl]	To [s]	Corr. Area	% of Total	Size distribution in CV [%]	Color
66.63	9,999.2	756	4,508.71	100.04	1,271.7	64	22.8	Blue

Assay Class: High Sensitivity DNA Assay
 Data Path: C:\...ents and Settings\Bioanalyzer\2012-02-15\2012-02-15_008.xad

Created: 2/15/2012 2:19:03 PM
 Modified: 2/15/2012 4:03:40 PM

Electropherogram Summary Continued ...



Overall Results for sample 11 : BAC CONC

Number of peaks found: 4 Corr. Area 1: 1,034.0
 Noise: 0.1

Peak table for sample 11 : BAC CONC

Peak	Size [bp]	Conc. [pg/μl]	Molarity [pmol/l]	Observations
1	35	125.00	5,411.3	Lower Marker
2	319	2,585.97	12,275.1	
3	394	1,267.06	4,875.1	
4	600	73.56	185.9	
5	659	15.09	34.7	
6	10,380	75.00	10.9	Upper Marker

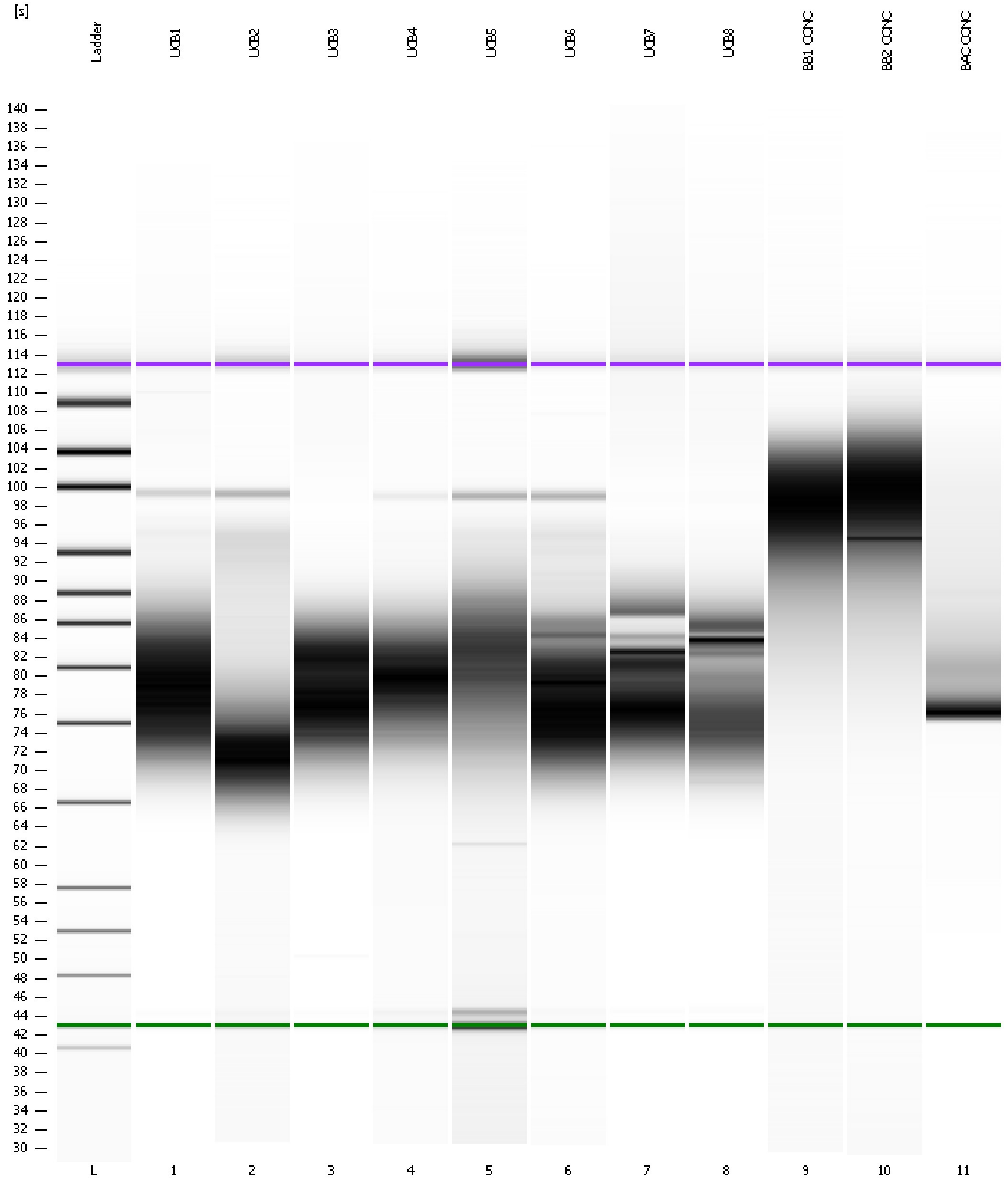
Region table for sample 11 : BAC CONC

From [s]	Molarity [pmol/l]	Average Size [bp]	Conc. [pg/μl]	To [s]	Corr. Area	% of Total	Size distribution in CV [%]	Color
66.63	18,976.7	438	4,860.81	100.04	1,034.0	94	36.2	Blue

Assay Class: High Sensitivity DNA Assay
Data Path: C:\...ents and Settings\Bioanalyzer\2012-02-15\2012-02-15_008.xad

Created: 2/15/2012 2:19:03 PM
Modified: 2/15/2012 4:03:40 PM

Gel Image

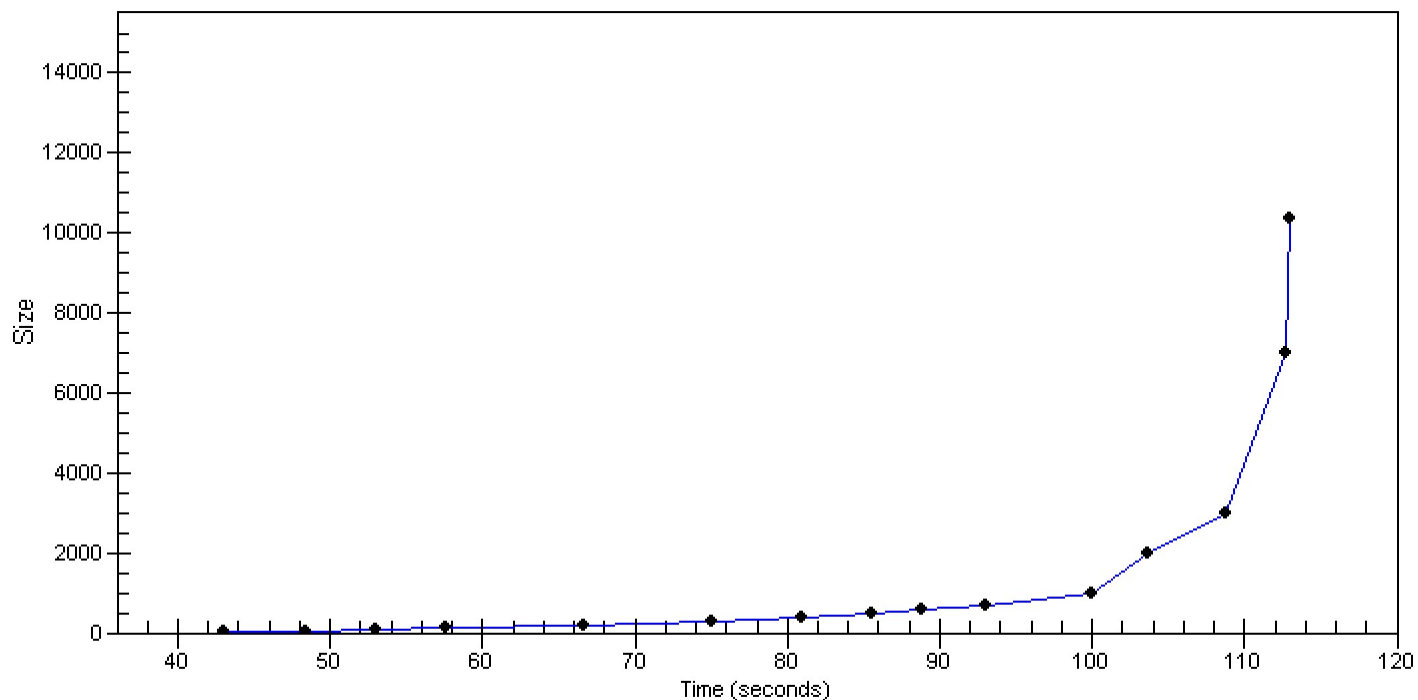


Assay Class: High Sensitivity DNA Assay
Data Path: C:\...ents and Settings\Bioanalyzer\2012-02-15\2012-02-15_008.xad

Created: 2/15/2012 2:19:03 PM
Modified: 2/15/2012 4:03:40 PM

Curves

Standard Curve



Assay Class: High Sensitivity DNA Assay
 Data Path: C:\...ents and Settings\Bioanalyzer\2012-02-15\2012-02-15_008.xad

Created: 2/15/2012 2:19:03 PM
 Modified: 2/15/2012 4:03:40 PM

Run Logbook

Description	Number	Source	Category	Sub Category	Time	Time Zone	User	Host
Run ended on port 1 (Number of wells acquired: 12)		Instrument	Run		2/15/2012 3:00:20 PM	(GMT --08:00) Pacific Standard Time	UC Davis	D8XSMGH1
Run started on port 1 (File: C:\Documents and Settings\Bioanalyzer\2012-02-15\2012-02-15_008.xad)		Instrument	Run		2/15/2012 2:19:09 PM	(GMT --08:00) Pacific Standard Time	UC Davis	D8XSMGH1
Product Number : G2938B		Instrument	Run		2/15/2012 2:19:09 PM	(GMT --08:00) Pacific Standard Time	UC Davis	D8XSMGH1
Name :		Instrument	Run		2/15/2012 2:19:09 PM	(GMT --08:00) Pacific Standard Time	UC Davis	D8XSMGH1
Vendor : Agilent Technologies		Instrument	Run		2/15/2012 2:19:09 PM	(GMT --08:00) Pacific Standard Time	UC Davis	D8XSMGH1
Serial# : DE13701086		Instrument	Run		2/15/2012 2:19:09 PM	(GMT --08:00) Pacific Standard Time	UC Davis	D8XSMGH1
Firmware : C.01.069		Instrument	Run		2/15/2012 2:19:09 PM	(GMT --08:00) Pacific Standard Time	UC Davis	D8XSMGH1
Cartridge : Electrode		Instrument	Run		2/15/2012 2:19:09 PM	(GMT --08:00) Pacific Standard Time	UC Davis	D8XSMGH1