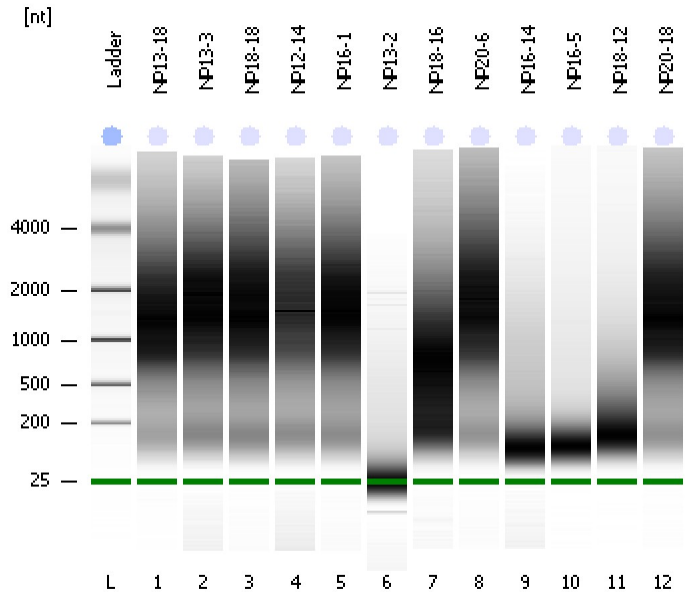


Assay Class: Eukaryote Total RNA Nano
Data Path: C:\...ents and Settings\Bioanalyzer\2012-02-16\2012-02-16_002.xad

Created: 2/16/2012 3:27:05 PM
Modified: 2/16/2012 3:52:53 PM

Electrophoresis File Run Summary



Instrument Information:

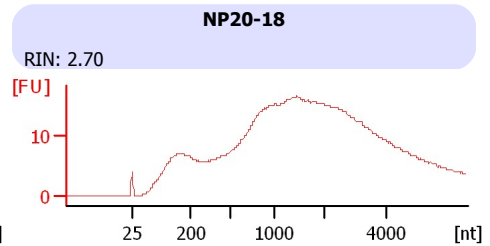
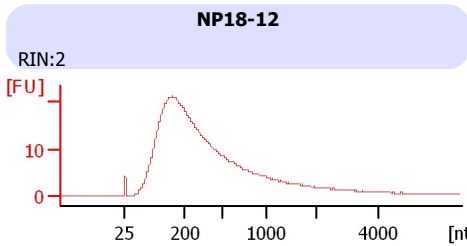
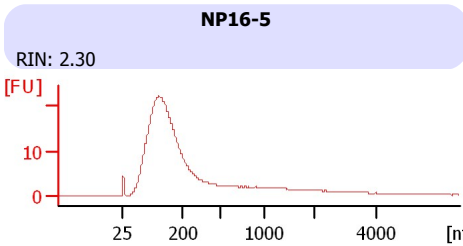
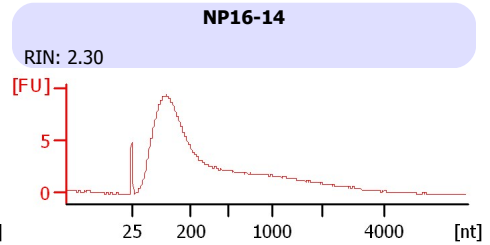
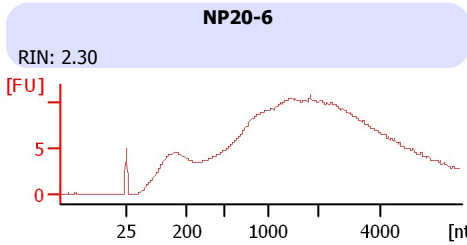
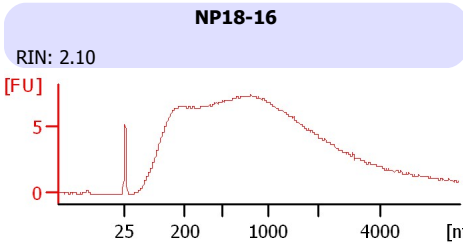
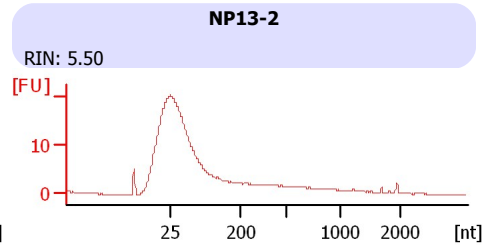
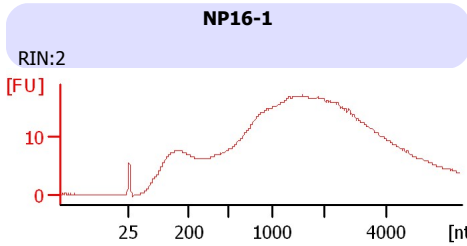
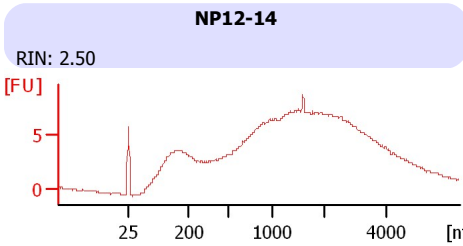
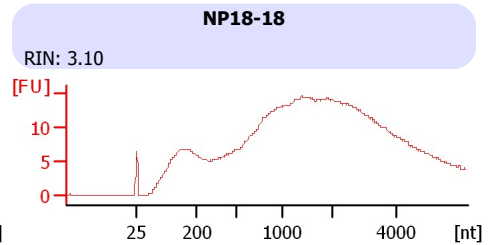
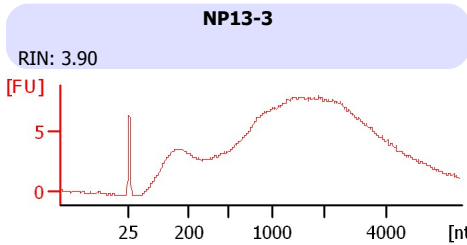
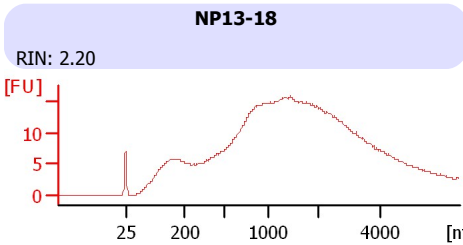
Instrument Name: DE13701086 Firmware: C.01.069
Serial#: DE13701086 Type: G2938B

Assay Information:

Assay Origin Path: C:\Program Files\Agilent\2100 bioanalyzer\2100 expert\assays\RNA\Eukaryote Total RNA Nano Series II.xsy
Assay Class: Eukaryote Total RNA Nano
Version: 2.6
Assay Comments: Total RNA Analysis ng sensitivity (Eukaryote)
© Copyright 2003 - 2009 Agilent Technologies, Inc.

Chip Information:

Chip Lot #: Reagent Kit Lot #: Chip Comments:



Assay Class: Eukaryote Total RNA Nano
 Data Path: C:\...ents and Settings\Bioanalyzer\2012-02-16\2012-02-16_002.xad

Created: 2/16/2012 3:27:05 PM
 Modified: 2/16/2012 3:52:53 PM

Electrophoresis File Run Summary (Chip Summary)

Sample Name	Sample Comment	Status	Result Label	Result Color
NP13-18		✓	RIN: 2.20	
NP13-3		✓	RIN: 3.90	
NP18-18		✓	RIN: 3.10	
NP12-14		✓	RIN: 2.50	
NP16-1		✓	RIN:2	
NP13-2		✓	RIN: 5.50	
NP18-16		✓	RIN: 2.10	
NP20-6		✓	RIN: 2.30	
NP16-14		✓	RIN: 2.30	
NP16-5		✓	RIN: 2.30	
NP18-12		✓	RIN:2	
NP20-18		✓	RIN: 2.70	
Ladder		✓	All Other Samples	

Chip Lot #

Reagent Kit Lot #

Chip Comments :

Assay Class: Eukaryote Total RNA Nano
Data Path: C:\...ents and Settings\Bioanalyzer\2012-02-16\2012-02-16_002.xad

Created: 2/16/2012 3:27:05 PM
Modified: 2/16/2012 3:52:53 PM

Electrophoresis Assay Details

General Analysis Settings

Number of Available Sample and Ladder Wells (Max.) : 13
Minimum Visible Range [s] : 17
Maximum Visible Range [s] : 70
Start Analysis Time Range [s] : 19
End Analysis Time Range [s] : 69
Ladder Concentration [ng/μl] : 150
Lower Marker Concentration [ng/μl] : 0
Upper Marker Concentration [ng/μl] : 0
Used Lower Marker for Quantitation
Standard Curve Fit is Logarithmic
Show Data Aligned to Lower Marker

Integrator Settings

Integration Start Time [s] : 19
Integration End Time [s] : 69
Slope Threshold : 0.6
Height Threshold [FU] : 0.5
Area Threshold : 0.2
Width Threshold [s] : 0.5
Baseline Plateau [s] : 6

Filter Settings

Filter Width [s] : 0.5
Polynomial Order : 4

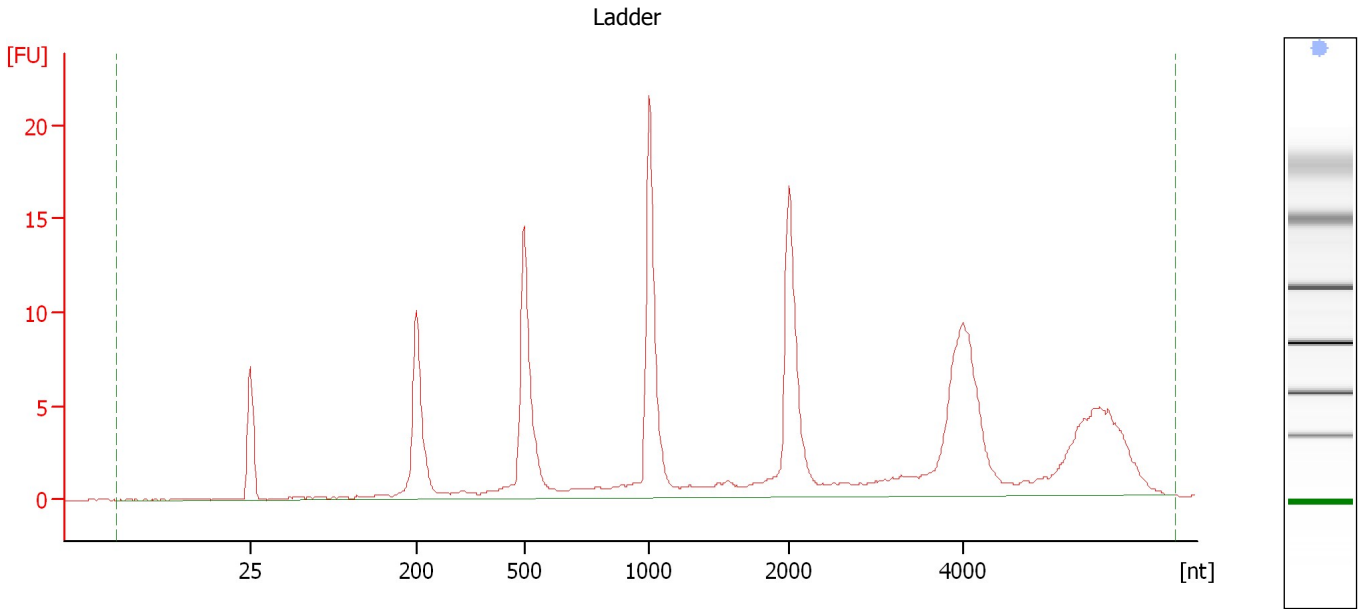
Ladder

Ladder Peak	Size
1	25
2	200
3	500
4	1000
5	2000
6	4000

Assay Class: Eukaryote Total RNA Nano
Data Path: C:\...ents and Settings\Bioanalyzer\2012-02-16\2012-02-16_002.xad

Created: 2/16/2012 3:27:05 PM
Modified: 2/16/2012 3:52:53 PM

Electropherogram Summary



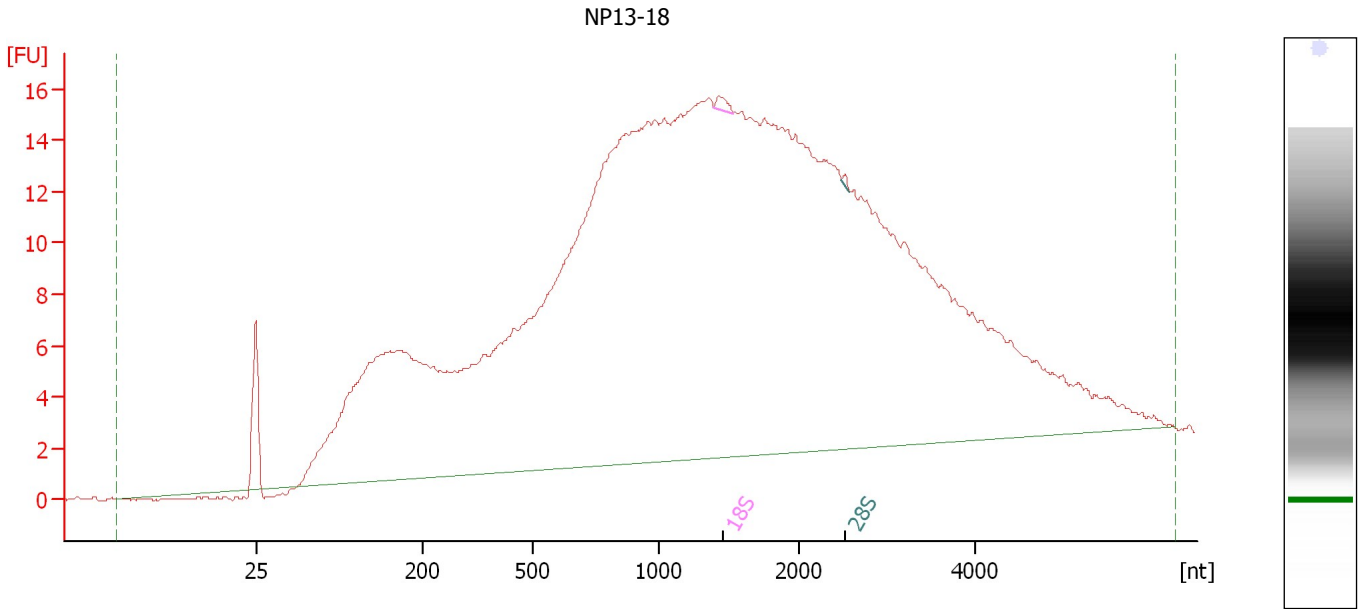
Overall Results for Ladder

RNA Area:	153.4	Result Flagging Color:	
RNA Concentration:	150 ng/μl	Result Flagging Label:	All Other Samples

Assay Class: Eukaryote Total RNA Nano
 Data Path: C:\...ents and Settings\Bioanalyzer\2012-02-16\2012-02-16_002.xad

Created: 2/16/2012 3:27:05 PM
 Modified: 2/16/2012 3:52:53 PM

Electropherogram Summary Continued ...



Overall Results for sample 1 : NP13-18

RNA Area:	612.1	RNA Integrity Number (RIN):	2.2 (B.02.08, Anomaly Threshold(s) manually adapted)
RNA Concentration:	598 ng/μl	Result Flagging Color:	
rRNA Ratio [28s / 18s]:	0.3	Result Flagging Label:	RIN: 2.20

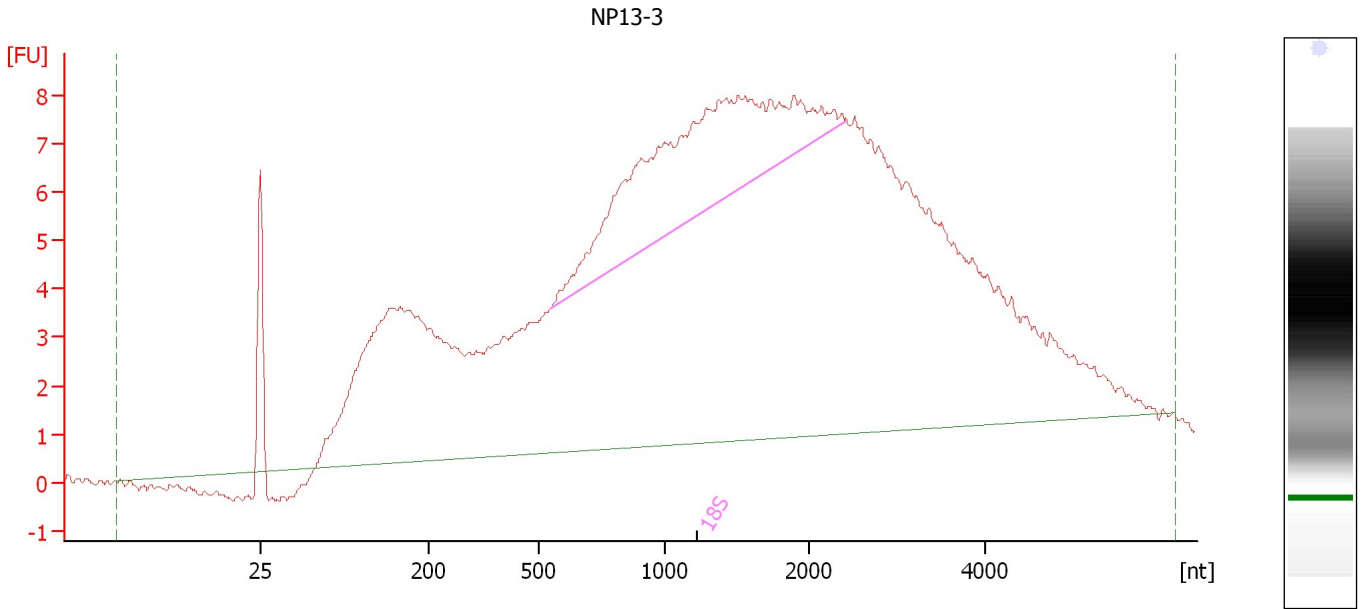
Fragment table for sample 1 : NP13-18

Name	Start Size [nt]	End Size [nt]	Area	% of total Area
18S	1,388	1,532	0.6	0.1
28S	2,475	2,572	0.2	0.0

Assay Class: Eukaryote Total RNA Nano
Data Path: C:\...ents and Settings\Bioanalyzer\2012-02-16\2012-02-16_002.xad

Created: 2/16/2012 3:27:05 PM
Modified: 2/16/2012 3:52:53 PM

Electropherogram Summary Continued ...



Overall Results for sample 2 : NP13-3

RNA Area:	322.7	RNA Integrity Number (RIN):	3.9 (B.02.08, Anomaly Threshold(s) manually adapted)
RNA Concentration:	315 ng/μl	Result Flagging Color:	
rRNA Ratio [28s / 18s]:	0.0	Result Flagging Label:	RIN: 3.90

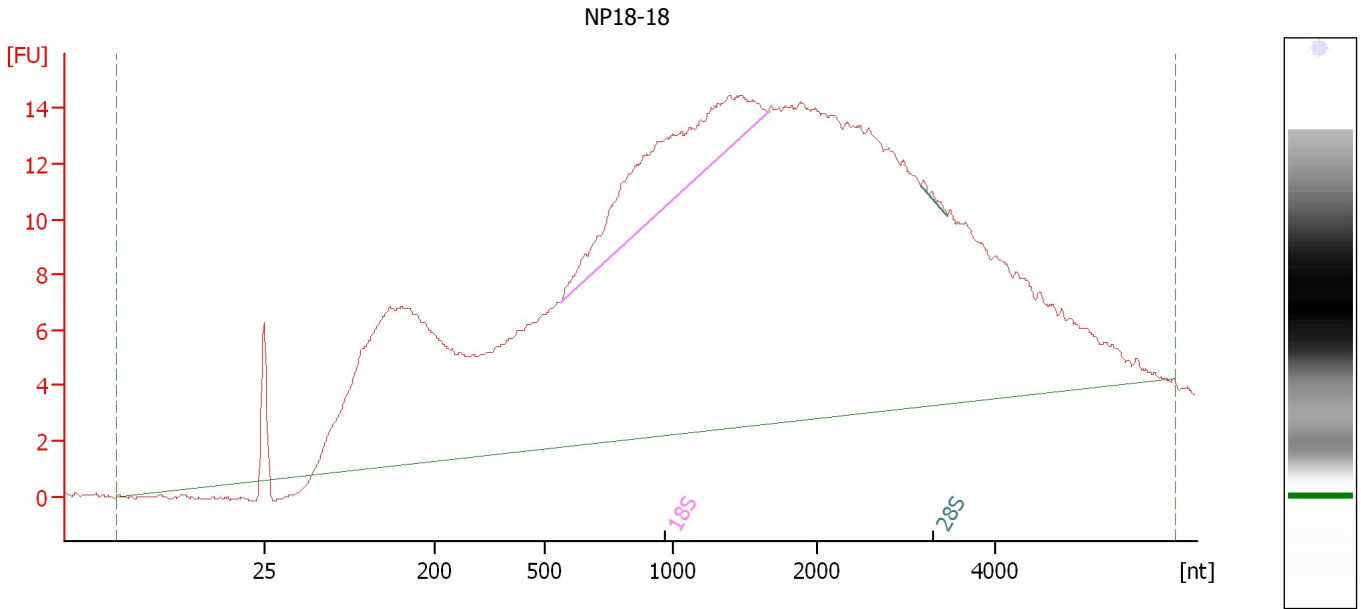
Fragment table for sample 2 : NP13-3

Name	Start Size [nt]	End Size [nt]	Area	% of total Area
18S	548	2,412	38.0	11.8

Assay Class: Eukaryote Total RNA Nano
 Data Path: C:\...ents and Settings\Bioanalyzer\2012-02-16\2012-02-16_002.xad

Created: 2/16/2012 3:27:05 PM
 Modified: 2/16/2012 3:52:53 PM

Electropherogram Summary Continued ...



Overall Results for sample 3 : NP18-18

RNA Area:	554.7	RNA Integrity Number (RIN):	3.1 (B.02.08, Anomaly Threshold(s) manually adapted)
RNA Concentration:	542 ng/μl	Result Flagging Color:	
rRNA Ratio [28s / 18s]:	0.0	Result Flagging Label:	RIN: 3.10

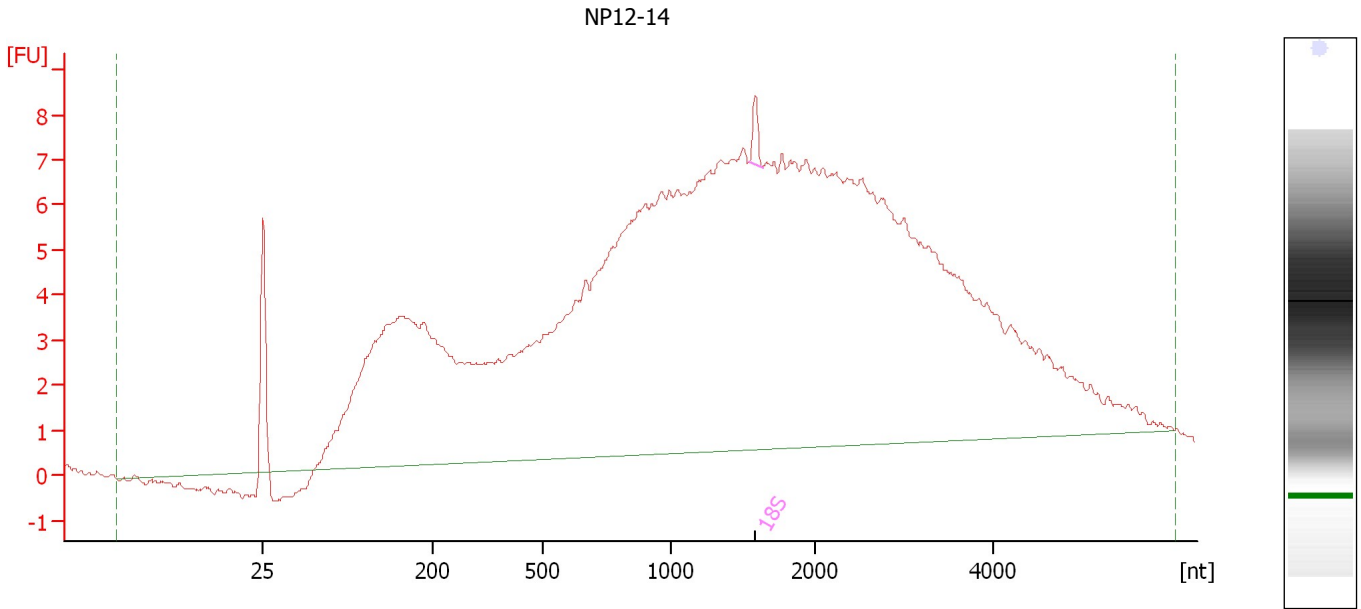
Fragment table for sample 3 : NP18-18

Name	Start Size [nt]	End Size [nt]	Area	% of total Area
18S	564	1,667	34.9	6.3
28S	3,164	3,463	0.3	0.1

Assay Class: Eukaryote Total RNA Nano
Data Path: C:\...ents and Settings\Bioanalyzer\2012-02-16\2012-02-16_002.xad

Created: 2/16/2012 3:27:05 PM
Modified: 2/16/2012 3:52:53 PM

Electropherogram Summary Continued ...



Overall Results for sample 4 : NP12-14

RNA Area:	304.5	RNA Integrity Number (RIN):	2.5 (B.02.08, Anomaly Threshold(s) manually adapted)
RNA Concentration:	298 ng/μl		
rRNA Ratio [28s / 18s]:	0.0	Result Flagging Color:	
		Result Flagging Label:	RIN: 2.50

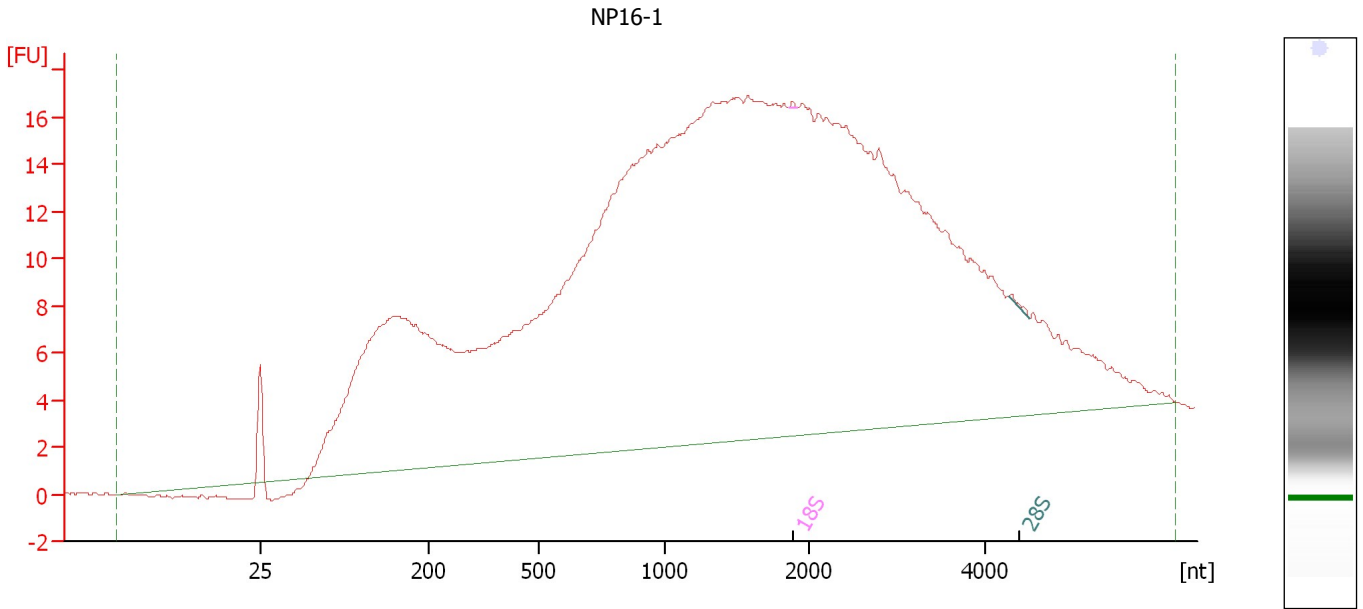
Fragment table for sample 4 : NP12-14

Name	Start Size [nt]	End Size [nt]	Area	% of total Area
18S	1,539	1,636	0.8	0.3

Assay Class: Eukaryote Total RNA Nano
Data Path: C:\...ents and Settings\Bioanalyzer\2012-02-16\2012-02-16_002.xad

Created: 2/16/2012 3:27:05 PM
Modified: 2/16/2012 3:52:53 PM

Electropherogram Summary Continued ...



Overall Results for sample 5 : NP16-1

RNA Area:	671.6	RNA Integrity Number (RIN):	2 (B.02.08, Anomaly Threshold(s) manually adapted)
RNA Concentration:	657 ng/μl	Result Flagging Color:	
rRNA Ratio [28s / 18s]:	2.3	Result Flagging Label:	RIN:2

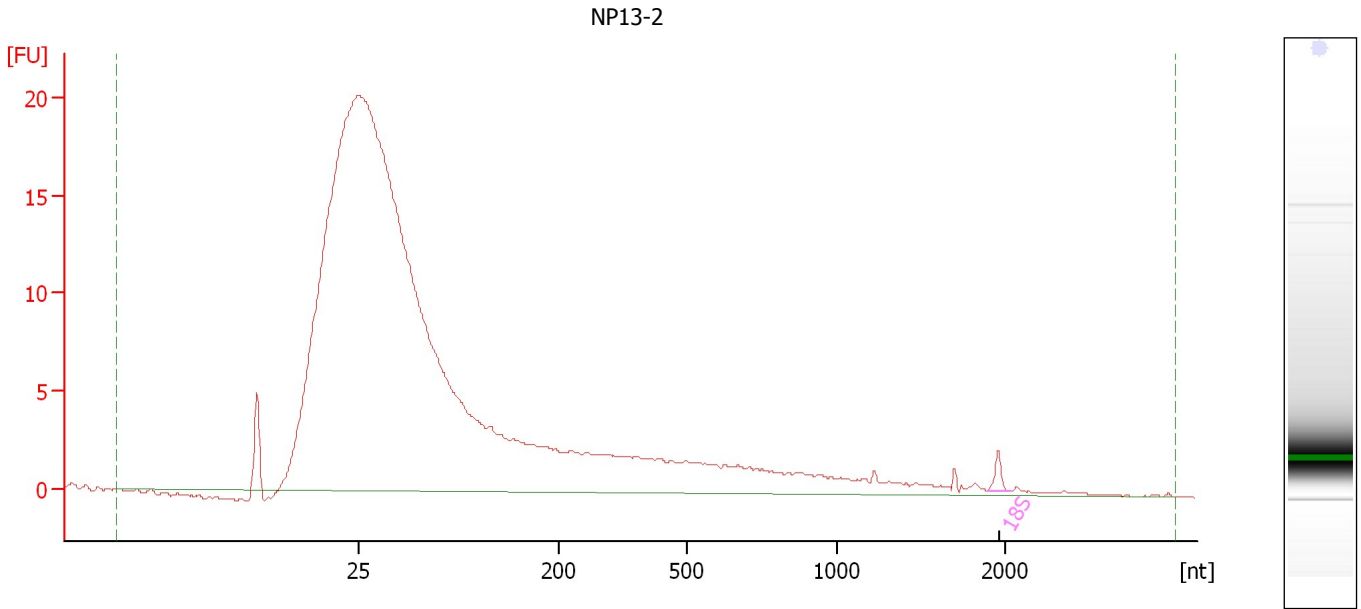
Fragment table for sample 5 : NP16-1

Name	Start Size [nt]	End Size [nt]	Area	% of total Area
18S	1,866	1,926	0.1	0.0
28S	4,257	4,498	0.3	0.0

Assay Class: Eukaryote Total RNA Nano
Data Path: C:\...ents and Settings\Bioanalyzer\2012-02-16\2012-02-16_002.xad

Created: 2/16/2012 3:27:05 PM
Modified: 2/16/2012 3:52:53 PM

Electropherogram Summary Continued ...



Overall Results for sample 6 : NP13-2

RNA Area:	90.3	RNA Integrity Number (RIN):	5.5 (B.02.08)
RNA Concentration:	88 ng/μl	Result Flagging Color:	
rRNA Ratio [28s / 18s]:	0.0	Result Flagging Label:	RIN: 5.50

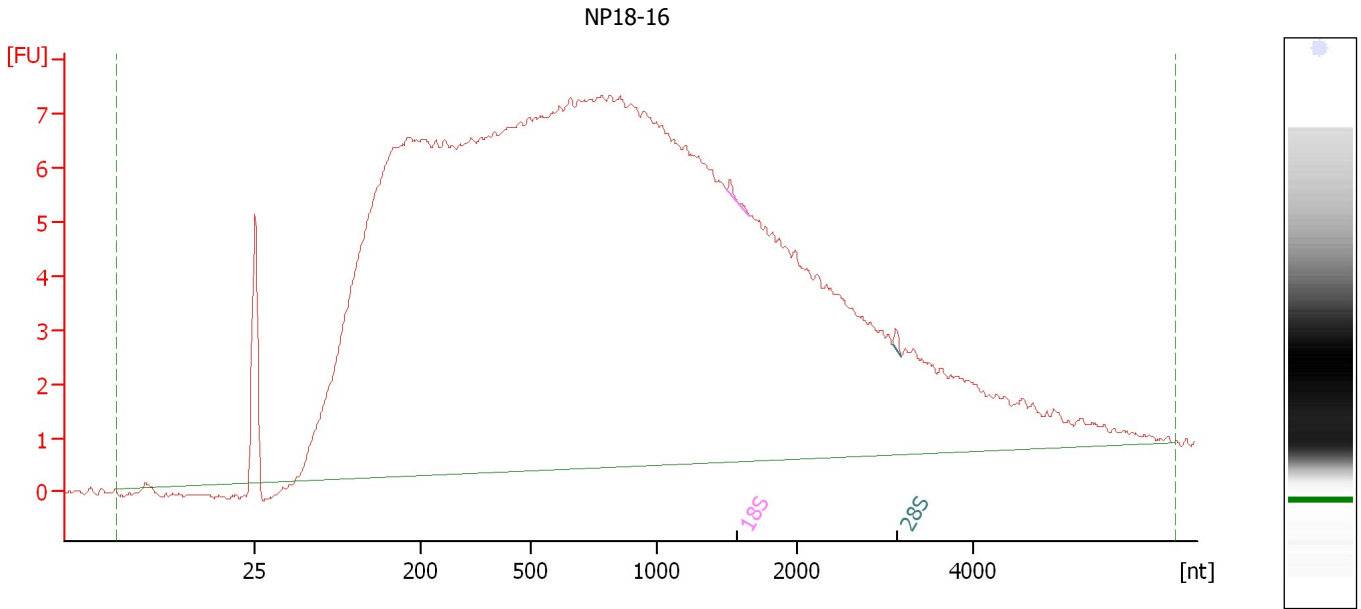
Fragment table for sample 6 : NP13-2

Name	Start Size [nt]	End Size [nt]	Area	% of total Area
18S	1,892	2,063	1.1	1.3

Assay Class: Eukaryote Total RNA Nano
 Data Path: C:\...ents and Settings\Bioanalyzer\2012-02-16\2012-02-16_002.xad

Created: 2/16/2012 3:27:05 PM
 Modified: 2/16/2012 3:52:53 PM

Electropherogram Summary Continued ...



Overall Results for sample 7 : NP18-16

RNA Area:	363.1	RNA Integrity Number (RIN):	2.1 (B.02.08, Anomaly Threshold(s) manually adapted)
RNA Concentration:	355 ng/μl	Result Flagging Color:	
rRNA Ratio [28s / 18s]:	0.7	Result Flagging Label:	RIN: 2.10

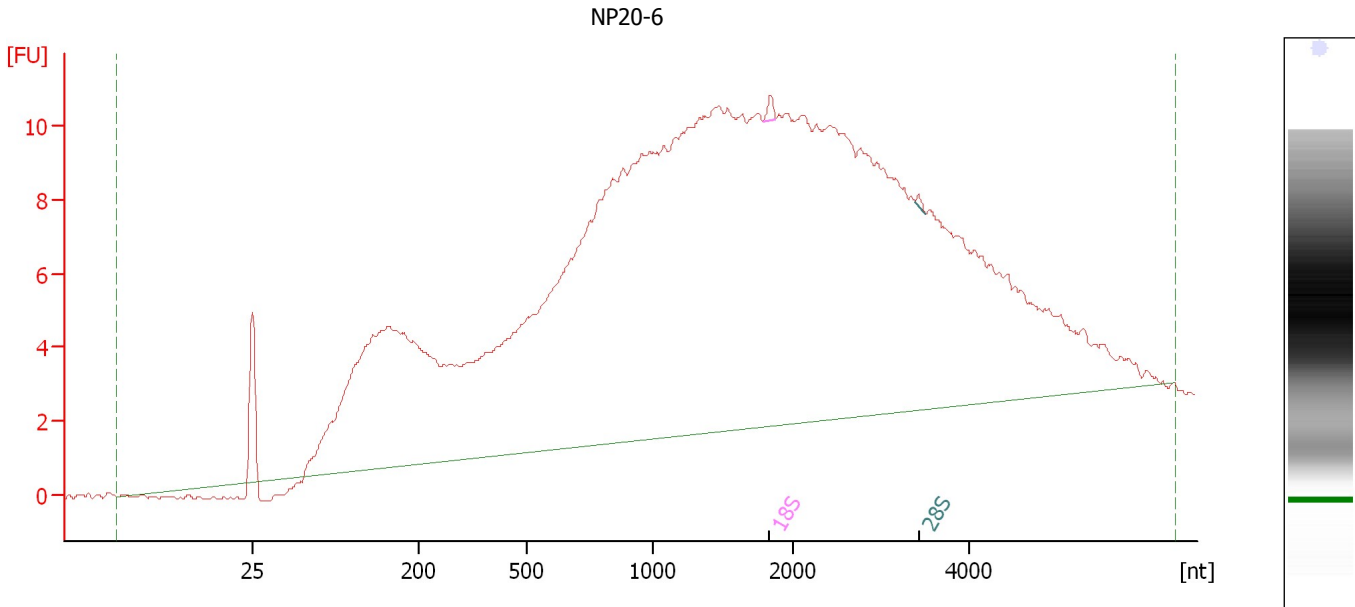
Fragment table for sample 7 : NP18-16

Name	Start Size [nt]	End Size [nt]	Area	% of total Area
18S	1,493	1,659	0.2	0.1
28S	3,084	3,182	0.1	0.0

Assay Class: Eukaryote Total RNA Nano
 Data Path: C:\...ents and Settings\Bioanalyzer\2012-02-16\2012-02-16_002.xad

Created: 2/16/2012 3:27:05 PM
 Modified: 2/16/2012 3:52:53 PM

Electropherogram Summary Continued ...



Overall Results for sample 8 : NP20-6

RNA Area:	407.0	RNA Integrity Number (RIN):	2.3 (B.02.08, Anomaly Threshold(s) manually adapted)
RNA Concentration:	398 ng/μl	Result Flagging Color:	
rRNA Ratio [28s / 18s]:	0.4	Result Flagging Label:	RIN: 2.30

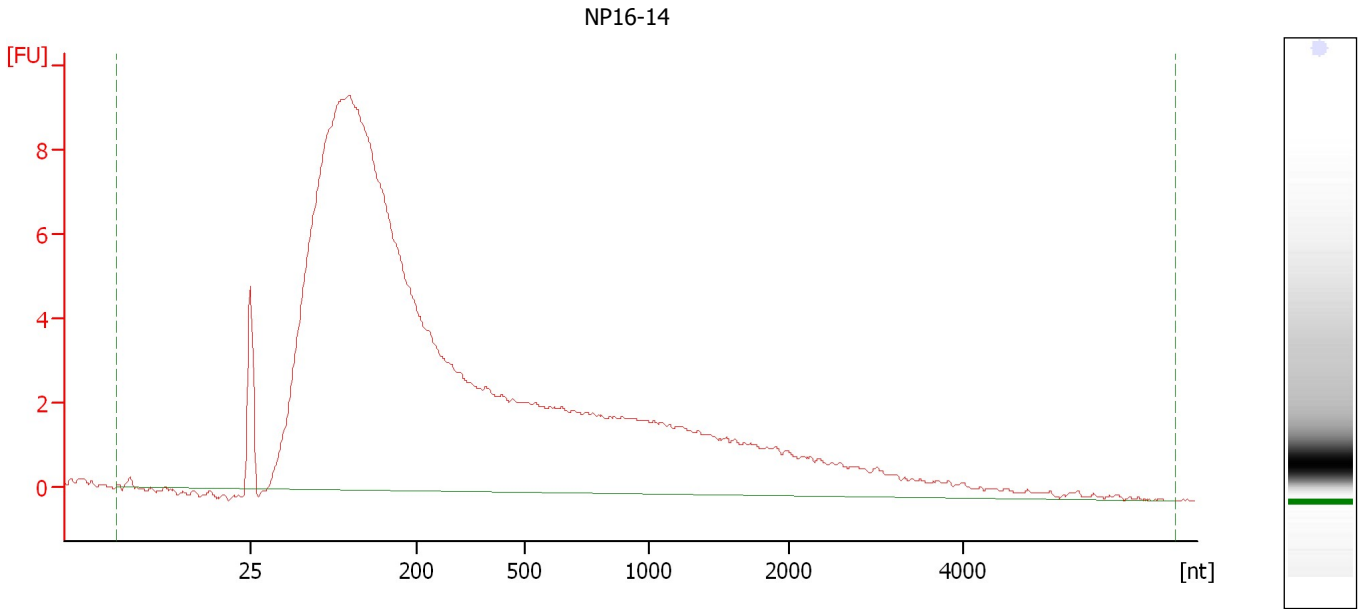
Fragment table for sample 8 : NP20-6

Name	Start Size [nt]	End Size [nt]	Area	% of total Area
18S	1,779	1,871	0.4	0.1
28S	3,393	3,516	0.1	0.0

Assay Class: Eukaryote Total RNA Nano
Data Path: C:\...ents and Settings\Bioanalyzer\2012-02-16\2012-02-16_002.xad

Created: 2/16/2012 3:27:05 PM
Modified: 2/16/2012 3:52:53 PM

Electropherogram Summary Continued ...



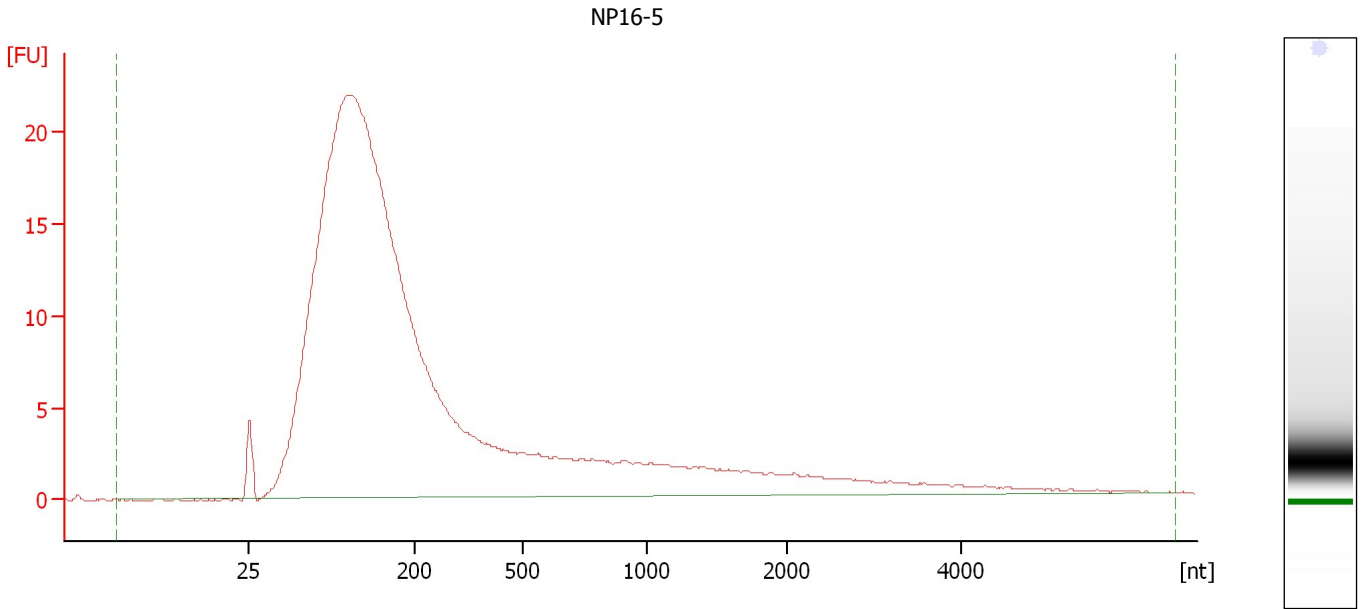
Overall Results for sample 9 : NP16-14

RNA Area:	235.9	RNA Integrity Number (RIN):	2.3 (B.02.08)
RNA Concentration:	231 ng/μl	Result Flagging Color:	
rRNA Ratio [28s / 18s]:	0.0	Result Flagging Label:	RIN: 2.30

Assay Class: Eukaryote Total RNA Nano
Data Path: C:\...ents and Settings\Bioanalyzer\2012-02-16\2012-02-16_002.xad

Created: 2/16/2012 3:27:05 PM
Modified: 2/16/2012 3:52:53 PM

Electropherogram Summary Continued ...



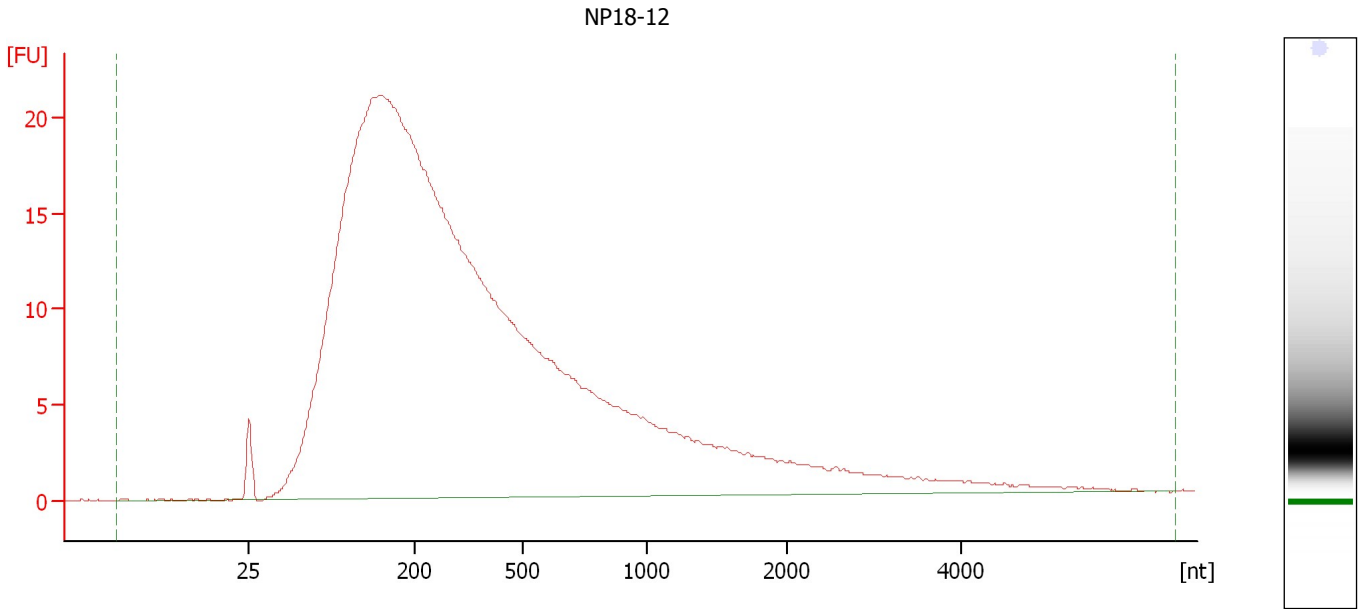
Overall Results for sample 10 : NP16-5

RNA Area:	415.0	RNA Integrity Number (RIN):	2.3 (B.02.08)
RNA Concentration:	406 ng/μl	Result Flagging Color:	
rRNA Ratio [28s / 18s]:	0.0	Result Flagging Label:	RIN: 2.30

Assay Class: Eukaryote Total RNA Nano
Data Path: C:\...ents and Settings\Bioanalyzer\2012-02-16\2012-02-16_002.xad

Created: 2/16/2012 3:27:05 PM
Modified: 2/16/2012 3:52:53 PM

Electropherogram Summary Continued ...



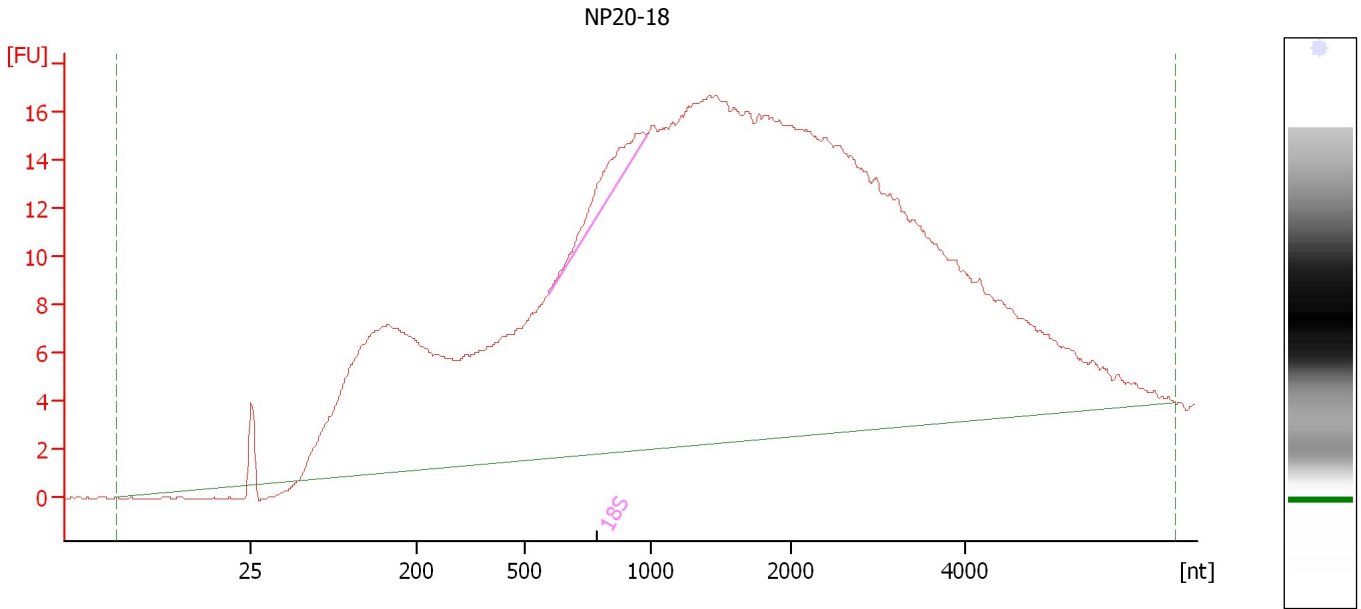
Overall Results for sample 11 : NP18-12

RNA Area:	590.9	RNA Integrity Number (RIN):	2 (B.02.08)
RNA Concentration:	578 ng/μl	Result Flagging Color:	
rRNA Ratio [28s / 18s]:	0.0	Result Flagging Label:	RIN:2

Assay Class: Eukaryote Total RNA Nano
Data Path: C:\...ents and Settings\Bioanalyzer\2012-02-16\2012-02-16_002.xad

Created: 2/16/2012 3:27:05 PM
Modified: 2/16/2012 3:52:53 PM

Electropherogram Summary Continued ...



Overall Results for sample 12 : NP20-18

RNA Area:	657.4	RNA Integrity Number (RIN):	2.7 (B.02.08, Anomaly Threshold(s) manually adapted)
RNA Concentration:	643 ng/μl	Result Flagging Color:	
rRNA Ratio [28s / 18s]:	0.0	Result Flagging Label:	RIN: 2.70

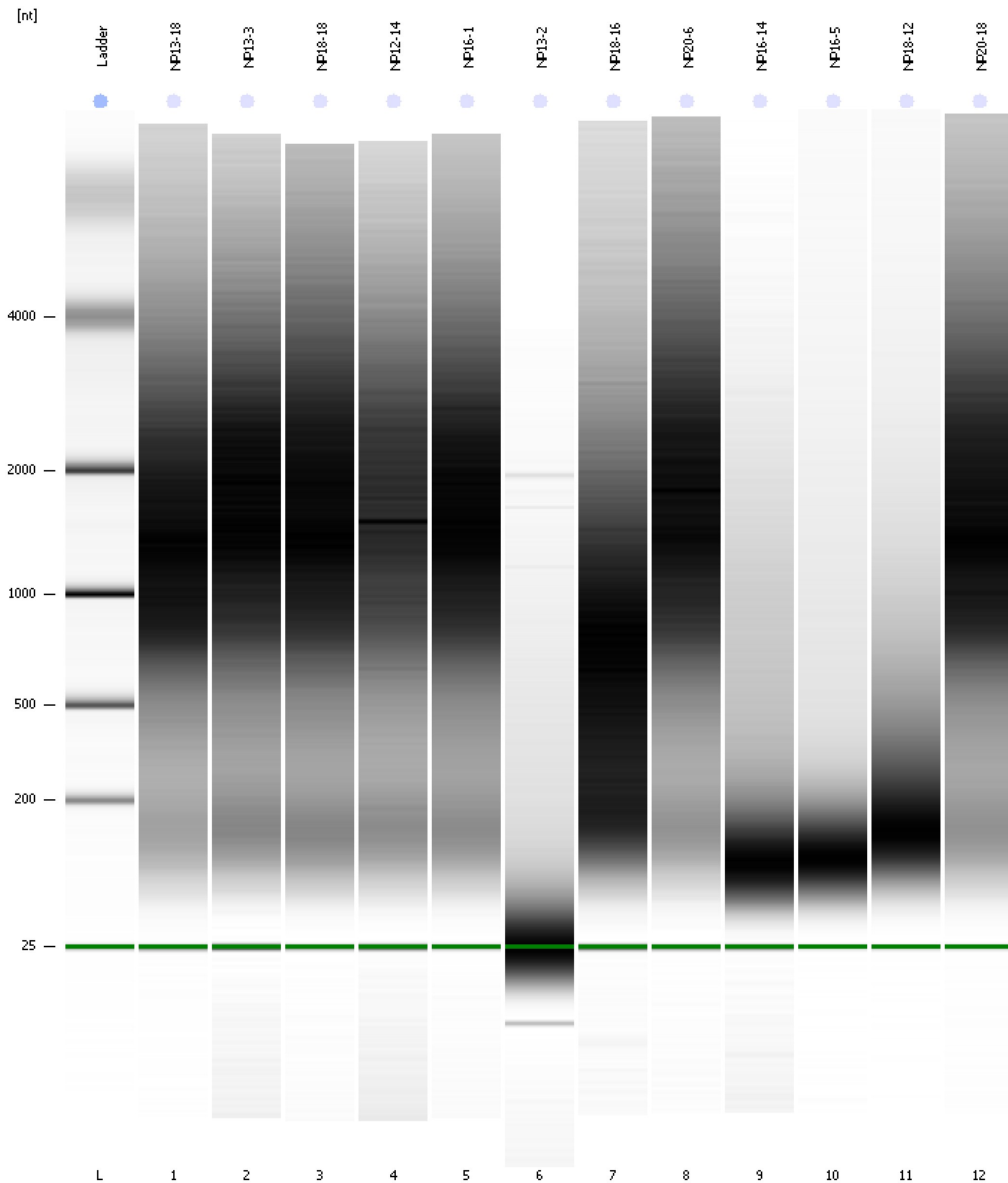
Fragment table for sample 12 : NP20-18

Name	Start Size [nt]	End Size [nt]	Area	% of total Area
18S	591	979	7.4	1.1

Assay Class: Eukaryote Total RNA Nano
Data Path: C:\...ents and Settings\Bioanalyzer\2012-02-16\2012-02-16_002.xad

Created: 2/16/2012 3:27:05 PM
Modified: 2/16/2012 3:52:53 PM

Gel Image



Assay Class: Eukaryote Total RNA Nano
 Data Path: C:\...ents and Settings\Bioanalyzer\2012-02-16\2012-02-16_002.xad

Created: 2/16/2012 3:27:05 PM
 Modified: 2/16/2012 3:52:53 PM

Run Logbook

Description	Number	Source	Category	Sub Category	Time	Time Zone	User	Host
Run ended on port 1 (Number of wells acquired: 13)		Instrument	Run		2/16/2012 3:50:52 PM	(GMT --08:00) Pacific Standard Time	UC Davis	D8XSMGH1
Run started on port 1 (File: C:\Documents and Settings\Bioanalyzer\2012-02-16\2012-02-16_002.xad)		Instrument	Run		2/16/2012 3:27:10 PM	(GMT --08:00) Pacific Standard Time	UC Davis	D8XSMGH1
Product Number : G2938B		Instrument	Run		2/16/2012 3:27:10 PM	(GMT --08:00) Pacific Standard Time	UC Davis	D8XSMGH1
Name :		Instrument	Run		2/16/2012 3:27:10 PM	(GMT --08:00) Pacific Standard Time	UC Davis	D8XSMGH1
Vendor : Agilent Technologies		Instrument	Run		2/16/2012 3:27:10 PM	(GMT --08:00) Pacific Standard Time	UC Davis	D8XSMGH1
Serial# : DE13701086		Instrument	Run		2/16/2012 3:27:10 PM	(GMT --08:00) Pacific Standard Time	UC Davis	D8XSMGH1
Firmware : C.01.069		Instrument	Run		2/16/2012 3:27:10 PM	(GMT --08:00) Pacific Standard Time	UC Davis	D8XSMGH1
Cartridge : Electrode		Instrument	Run		2/16/2012 3:27:10 PM	(GMT --08:00) Pacific Standard Time	UC Davis	D8XSMGH1