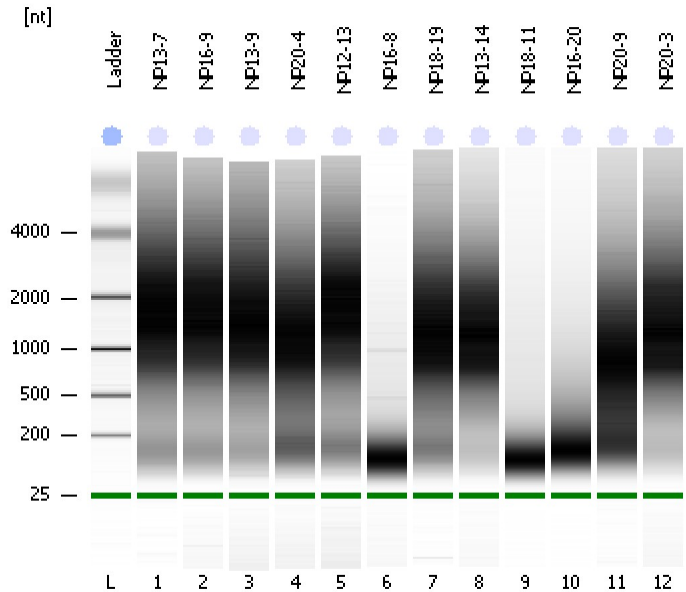


Assay Class: Eukaryote Total RNA Nano
Data Path: C:\...ents and Settings\Bioanalyzer\2012-02-16\2012-02-16_003.xad

Created: 2/16/2012 4:12:50 PM
Modified: 2/16/2012 4:37:06 PM

Electrophoresis File Run Summary



Instrument Information:

Instrument Name: DE13701086 Firmware: C.01.069
Serial#: DE13701086 Type: G2938B

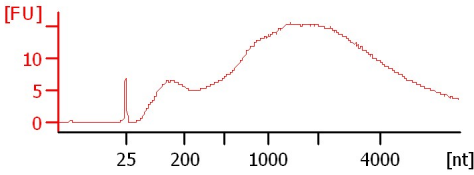
Assay Information:

Assay Origin Path: C:\Program Files\Agilent\2100 bioanalyzer\2100 expert\assays\RNA\Eukaryote Total RNA Nano Series II.xsy
Assay Class: Eukaryote Total RNA Nano
Version: 2.6
Assay Comments: Total RNA Analysis ng sensitivity (Eukaryote)
© Copyright 2003 - 2009 Agilent Technologies, Inc.

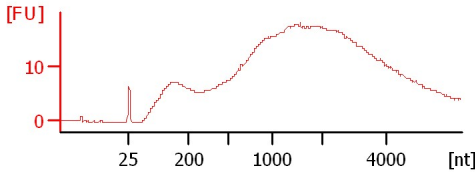
Chip Information:

Chip Lot #: Reagent Kit Lot #: Chip Comments:

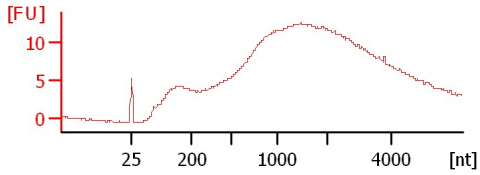
NP13-7
RIN: 2.80



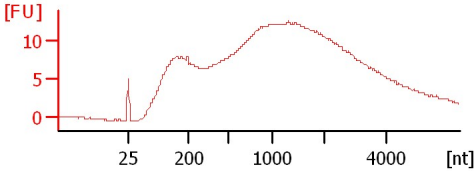
NP16-9
RIN: 8.40



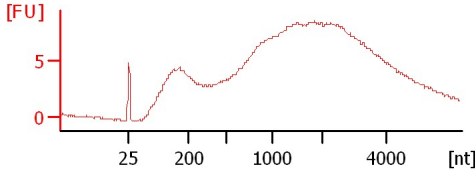
NP13-9
RIN: 2.20



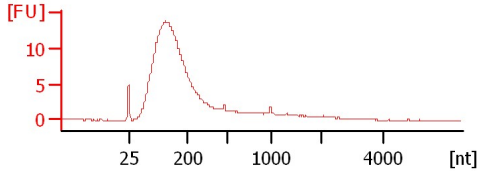
NP20-4
RIN: 2.90



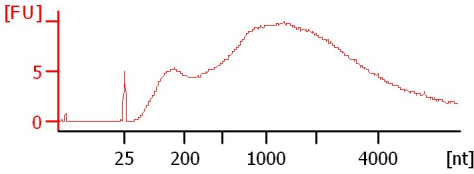
NP12-13
RIN: 4



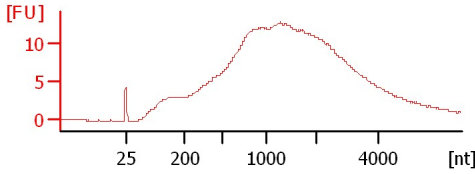
NP16-8
RIN: 2.50



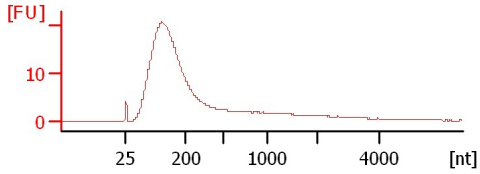
NP18-19
RIN: 2.90



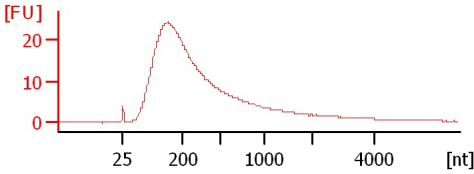
NP13-14
RIN: 2.30



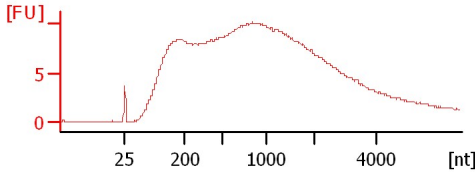
NP18-11
RIN: 2.30



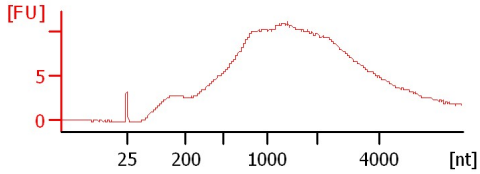
NP16-20
RIN: 2.10



NP20-9
RIN: 2.10



NP20-3
RIN: 2.30



Assay Class: Eukaryote Total RNA Nano
 Data Path: C:\...ents and Settings\Bioanalyzer\2012-02-16\2012-02-16_003.xad

Created: 2/16/2012 4:12:50 PM
 Modified: 2/16/2012 4:37:06 PM

Electrophoresis File Run Summary (Chip Summary)

Sample Name	Sample Comment	Status	Result Label	Result Color
NP13-7		✓	RIN: 2.80	
NP16-9		✓	RIN: 8.40	
NP13-9		✓	RIN: 2.20	
NP20-4		✓	RIN: 2.90	
NP12-13		✓	RIN:4	
NP16-8		✓	RIN: 2.50	
NP18-19		✓	RIN: 2.90	
NP13-14		✓	RIN: 2.30	
NP18-11		✓	RIN: 2.30	
NP16-20		✓	RIN: 2.10	
NP20-9		✓	RIN: 2.10	
NP20-3		✓	RIN: 2.30	
Ladder		✓	All Other Samples	

Chip Lot #

Reagent Kit Lot #

Chip Comments :

Assay Class: Eukaryote Total RNA Nano
Data Path: C:\...ents and Settings\Bioanalyzer\2012-02-16\2012-02-16_003.xad

Created: 2/16/2012 4:12:50 PM
Modified: 2/16/2012 4:37:06 PM

Electrophoresis Assay Details

General Analysis Settings

Number of Available Sample and Ladder Wells (Max.) : 13
Minimum Visible Range [s] : 17
Maximum Visible Range [s] : 70
Start Analysis Time Range [s] : 19
End Analysis Time Range [s] : 69
Ladder Concentration [ng/ μ l] : 150
Lower Marker Concentration [ng/ μ l] : 0
Upper Marker Concentration [ng/ μ l] : 0
Used Lower Marker for Quantitation
Standard Curve Fit is Logarithmic
Show Data Aligned to Lower Marker

Integrator Settings

Integration Start Time [s] : 19
Integration End Time [s] : 69
Slope Threshold : 0.6
Height Threshold [FU] : 0.5
Area Threshold : 0.2
Width Threshold [s] : 0.5
Baseline Plateau [s] : 6

Filter Settings

Filter Width [s] : 0.5
Polynomial Order : 4

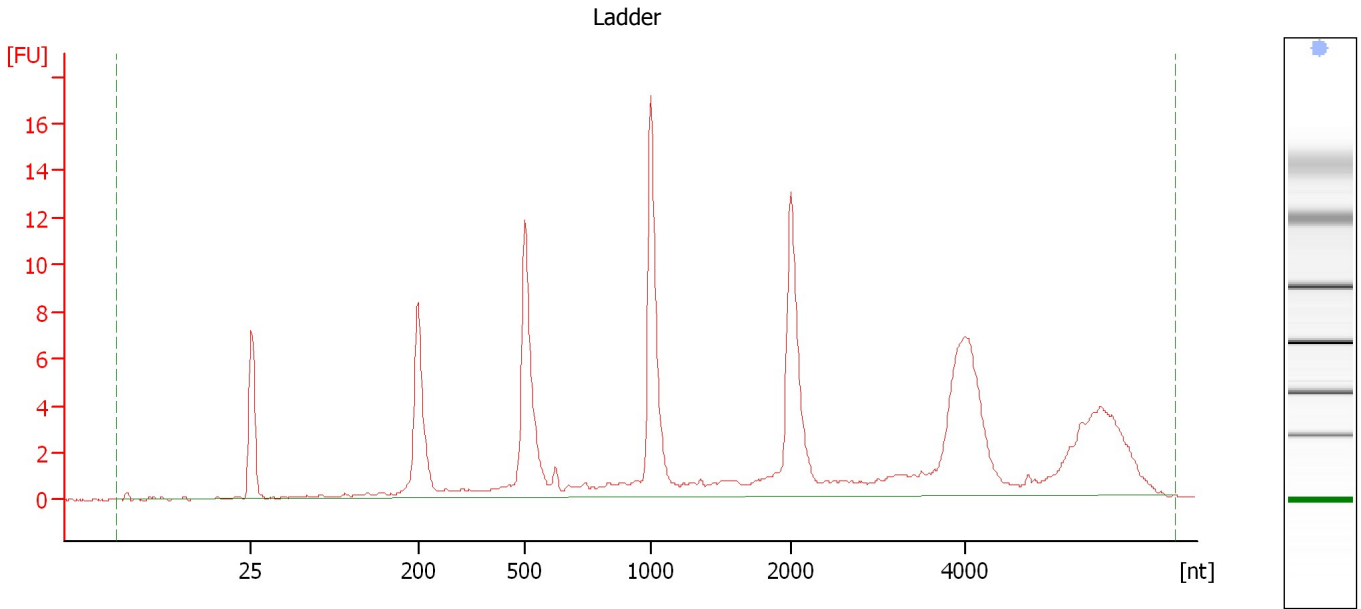
Ladder

Ladder Peak	Size
1	25
2	200
3	500
4	1000
5	2000
6	4000

Assay Class: Eukaryote Total RNA Nano
Data Path: C:\...ents and Settings\Bioanalyzer\2012-02-16\2012-02-16_003.xad

Created: 2/16/2012 4:12:50 PM
Modified: 2/16/2012 4:37:06 PM

Electropherogram Summary



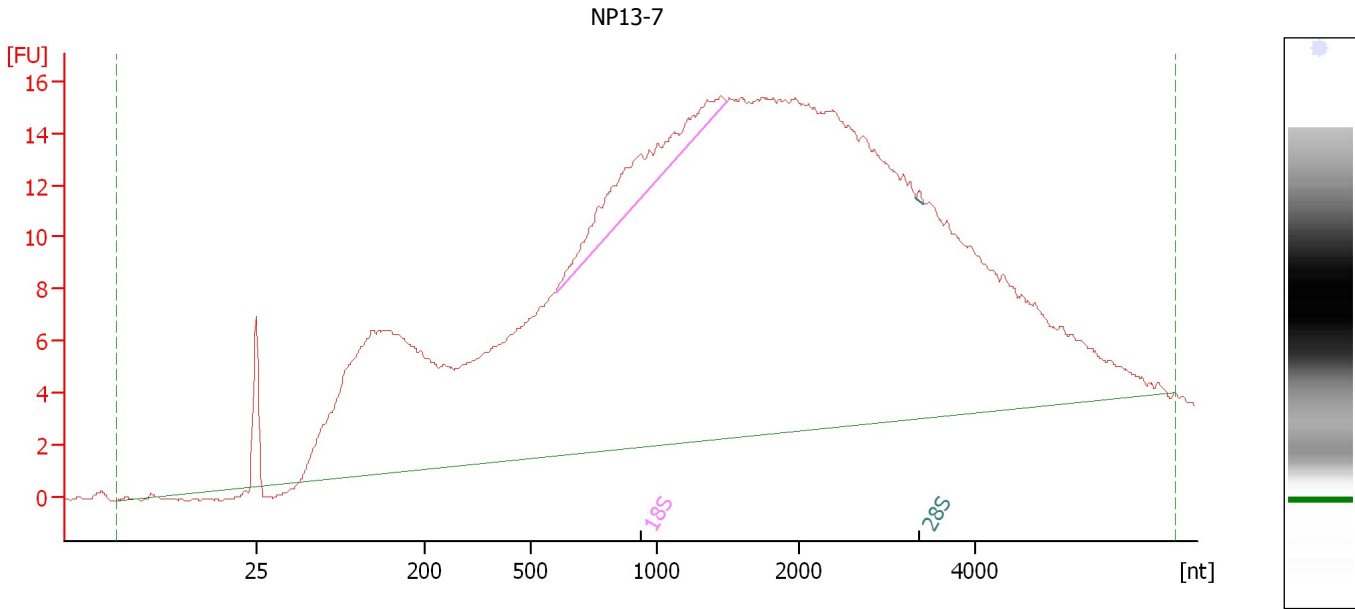
Overall Results for Ladder

RNA Area:	127.0	Result Flagging Color:	
RNA Concentration:	150 ng/ μ l	Result Flagging Label:	All Other Samples

Assay Class: Eukaryote Total RNA Nano
 Data Path: C:\...ents and Settings\Bioanalyzer\2012-02-16\2012-02-16_003.xad

Created: 2/16/2012 4:12:50 PM
 Modified: 2/16/2012 4:37:06 PM

Electropherogram Summary Continued ...



Overall Results for sample 1 : NP13-7

RNA Area:	618.6	RNA Integrity Number (RIN):	2.8 (B.02.08, Anomaly Threshold(s) manually adapted)
RNA Concentration:	731 ng/μl	Result Flagging Color:	
rRNA Ratio [28s / 18s]:	0.0	Result Flagging Label:	RIN: 2.80

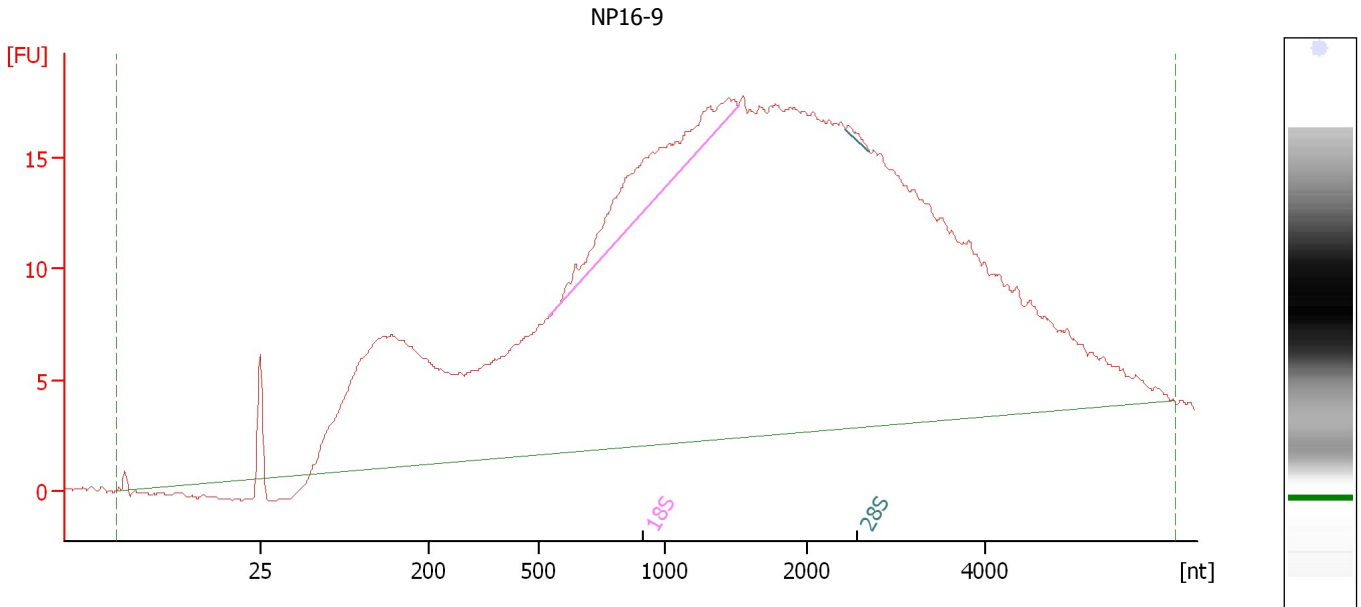
Fragment table for sample 1 : NP13-7

Name	Start Size [nt]	End Size [nt]	Area	% of total Area
18S	597	1,493	18.6	3.0
28S	3,320	3,416	0.1	0.0

Assay Class: Eukaryote Total RNA Nano
 Data Path: C:\...ents and Settings\Bioanalyzer\2012-02-16\2012-02-16_003.xad

Created: 2/16/2012 4:12:50 PM
 Modified: 2/16/2012 4:37:06 PM

Electropherogram Summary Continued ...



Setpoint Deviations for sample 2 : NP16-9

Width Threshold [s] : 0.013

Overall Results for sample 2 : NP16-9

RNA Area:	687.7	RNA Integrity Number (RIN):	8.4 (B.02.08, Anomaly Threshold(s) manually adapted)
RNA Concentration:	812 ng/μl	Result Flagging Color:	
rRNA Ratio [28s / 18s]:	0.0	Result Flagging Label:	RIN: 8.40

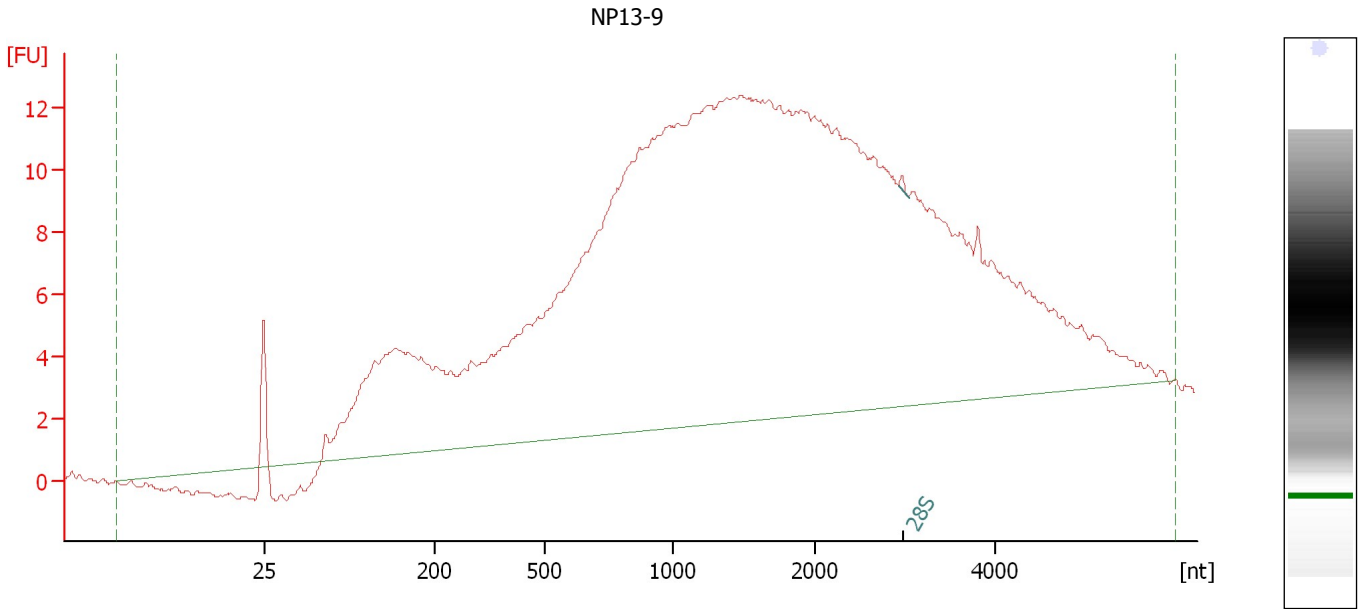
Fragment table for sample 2 : NP16-9

Name	Start Size [nt]	End Size [nt]	Area	% of total Area
18S	546	1,520	27.4	4.0
28S	2,434	2,698	0.6	0.1

Assay Class: Eukaryote Total RNA Nano
Data Path: C:\...ents and Settings\Bioanalyzer\2012-02-16\2012-02-16_003.xad

Created: 2/16/2012 4:12:50 PM
Modified: 2/16/2012 4:37:06 PM

Electropherogram Summary Continued ...



Overall Results for sample 3 : NP13-9

RNA Area:	446.9	RNA Integrity Number (RIN):	2.2 (B.02.08, Anomaly Threshold(s) manually adapted)
RNA Concentration:	528 ng/μl		
rRNA Ratio [28s / 18s]:	0.0	Result Flagging Color:	
		Result Flagging Label:	RIN: 2.20

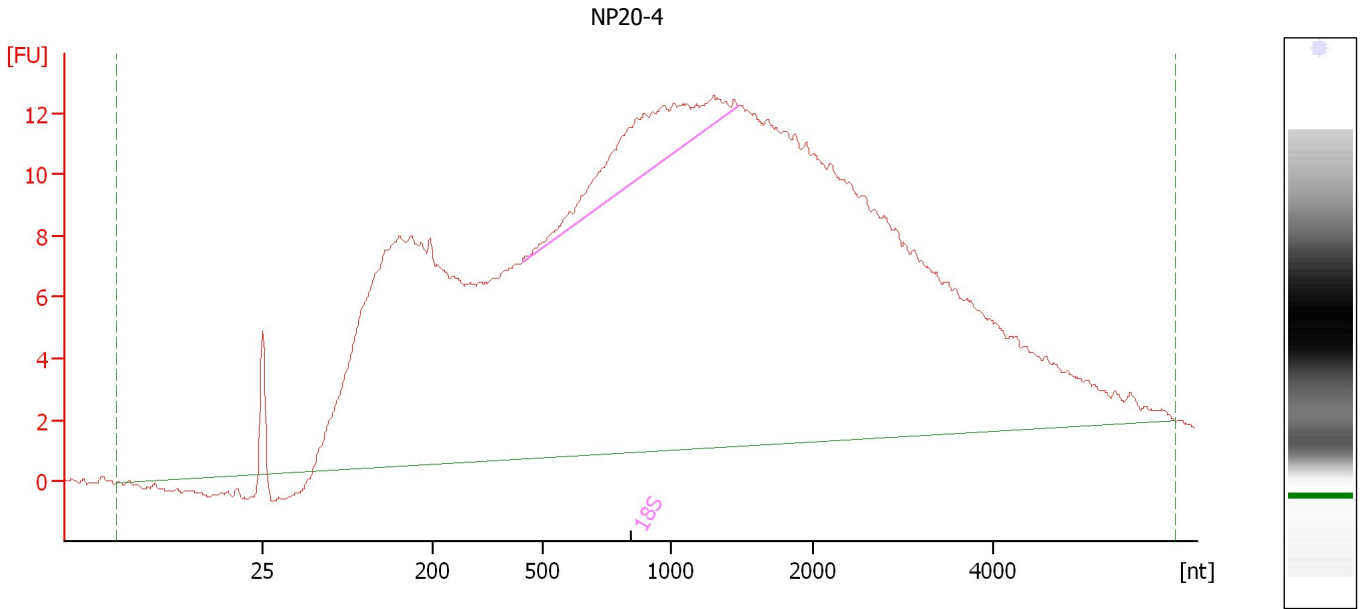
Fragment table for sample 3 : NP13-9

Name	Start Size [nt]	End Size [nt]	Area	% of total Area
28S	2,921	3,040	0.2	0.0

Assay Class: Eukaryote Total RNA Nano
Data Path: C:\...ents and Settings\Bioanalyzer\2012-02-16\2012-02-16_003.xad

Created: 2/16/2012 4:12:50 PM
Modified: 2/16/2012 4:37:06 PM

Electropherogram Summary Continued ...



Overall Results for sample 4 : NP20-4

RNA Area:	573.7	RNA Integrity Number (RIN):	2.9 (B.02.08, Anomaly Threshold(s) manually adapted)
RNA Concentration:	678 ng/μl	Result Flagging Color:	
rRNA Ratio [28s / 18s]:	0.0	Result Flagging Label:	RIN: 2.90

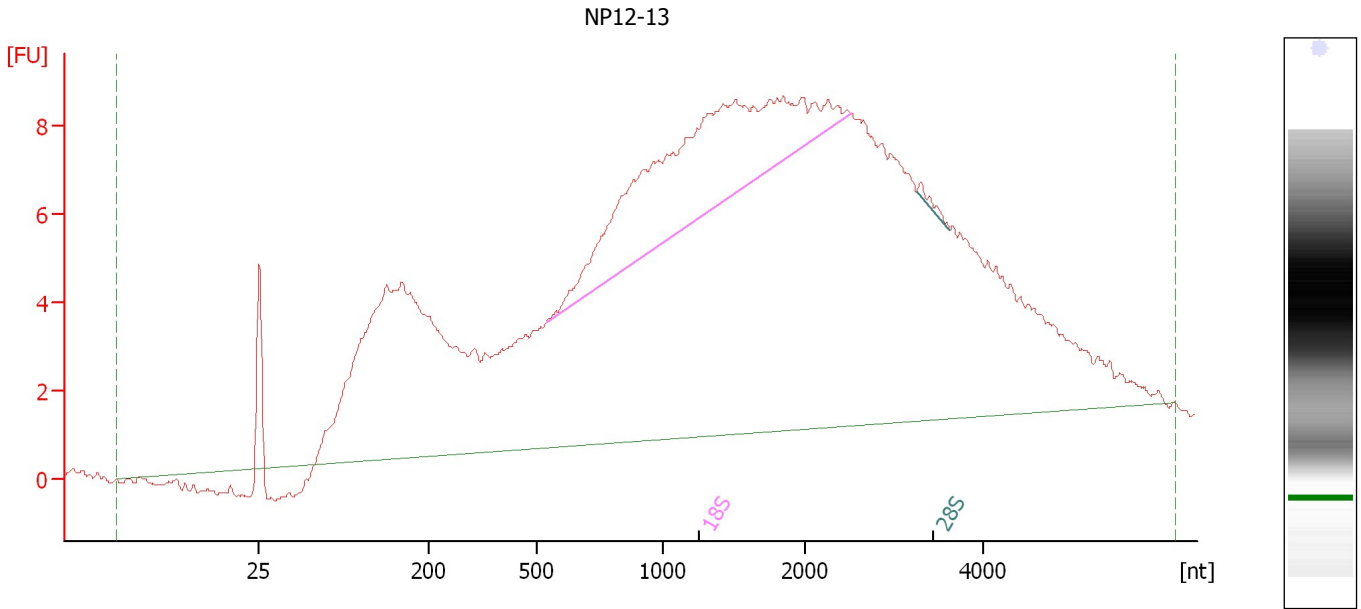
Fragment table for sample 4 : NP20-4

Name	Start Size [nt]	End Size [nt]	Area	% of total Area
18S	442	1,486	22.3	3.9

Assay Class: Eukaryote Total RNA Nano
 Data Path: C:\...ents and Settings\Bioanalyzer\2012-02-16\2012-02-16_003.xad

Created: 2/16/2012 4:12:50 PM
 Modified: 2/16/2012 4:37:06 PM

Electropherogram Summary Continued ...



Overall Results for sample 5 : NP12-13

RNA Area:	350.2	RNA Integrity Number (RIN):	4 (B.02.08, Anomaly Threshold(s) manually adapted)
RNA Concentration:	414 ng/μl	Result Flagging Color:	
rRNA Ratio [28s / 18s]:	0.0	Result Flagging Label:	RIN:4

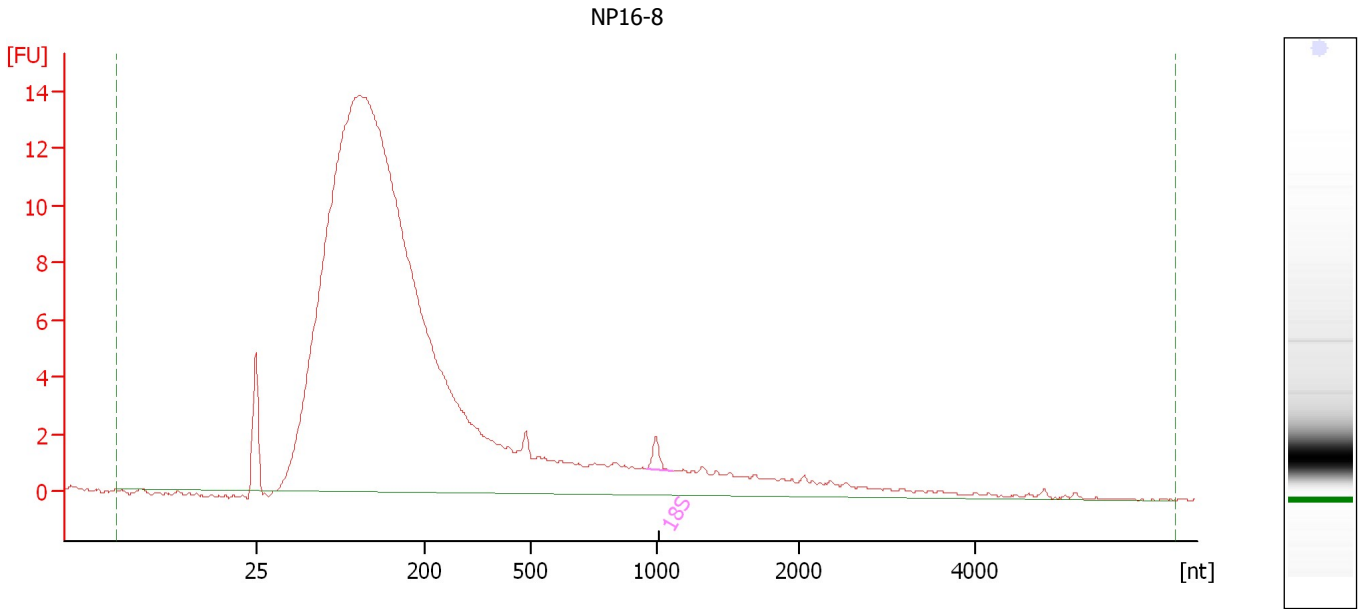
Fragment table for sample 5 : NP12-13

Name	Start Size [nt]	End Size [nt]	Area	% of total Area
18S	540	2,519	40.0	11.4
28S	3,253	3,626	0.4	0.1

Assay Class: Eukaryote Total RNA Nano
Data Path: C:\...ents and Settings\Bioanalyzer\2012-02-16\2012-02-16_003.xad

Created: 2/16/2012 4:12:50 PM
Modified: 2/16/2012 4:37:06 PM

Electropherogram Summary Continued ...



Overall Results for sample 6 : NP16-8

RNA Area:	259.4	RNA Integrity Number (RIN):	2.5 (B.02.08)
RNA Concentration:	306 ng/μl	Result Flagging Color:	
rRNA Ratio [28s / 18s]:	0.0	Result Flagging Label:	RIN: 2.50

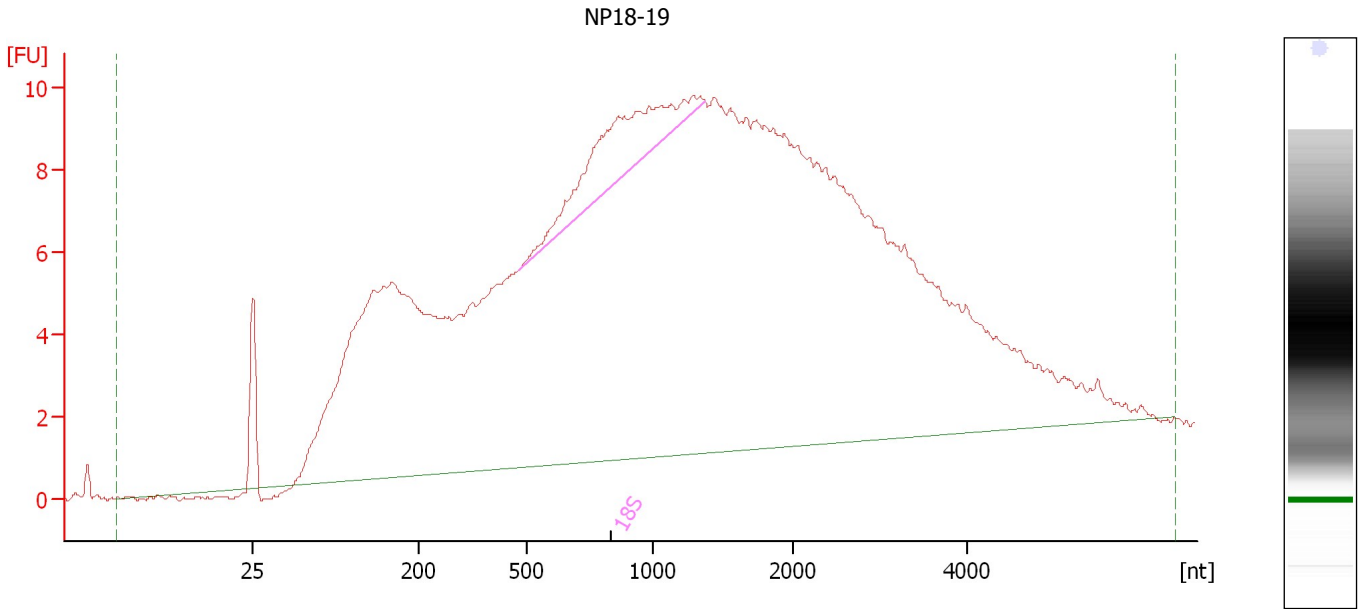
Fragment table for sample 6 : NP16-8

Name	Start Size [nt]	End Size [nt]	Area	% of total Area
18S	953	1,114	1.0	0.4

Assay Class: Eukaryote Total RNA Nano
 Data Path: C:\...ents and Settings\Bioanalyzer\2012-02-16\2012-02-16_003.xad

Created: 2/16/2012 4:12:50 PM
 Modified: 2/16/2012 4:37:06 PM

Electropherogram Summary Continued ...



Overall Results for sample 7 : NP18-19

RNA Area:	423.7	RNA Integrity Number (RIN):	2.9 (B.02.08, Anomaly Threshold(s) manually adapted)
RNA Concentration:	500 ng/μl	Result Flagging Color:	
rRNA Ratio [28s / 18s]:	0.0	Result Flagging Label:	RIN: 2.90

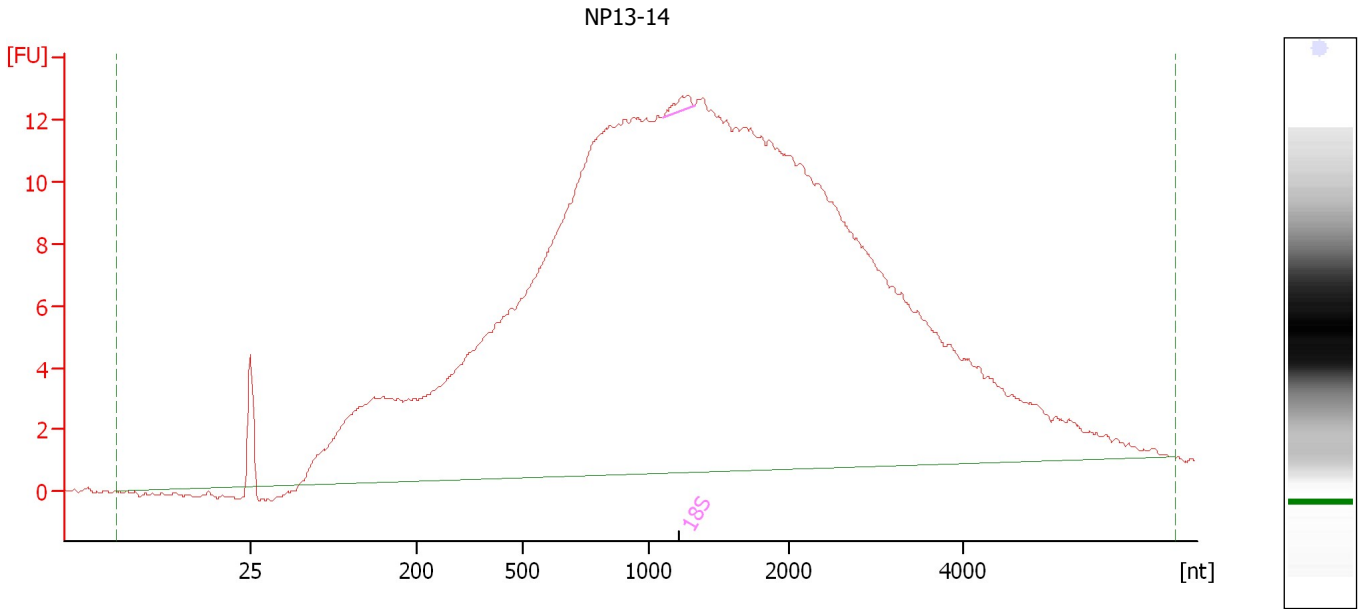
Fragment table for sample 7 : NP18-19

Name	Start Size [nt]	End Size [nt]	Area	% of total Area
18S	477	1,383	15.6	3.7

Assay Class: Eukaryote Total RNA Nano
Data Path: C:\...ents and Settings\Bioanalyzer\2012-02-16\2012-02-16_003.xad

Created: 2/16/2012 4:12:50 PM
Modified: 2/16/2012 4:37:06 PM

Electropherogram Summary Continued ...



Setpoint Deviations for sample 8 : NP13-14

Width Threshold [s] : 0.01

Overall Results for sample 8 : NP13-14

RNA Area: 500.3 RNA Integrity Number (RIN): 2.3 (B.02.08, Anomaly Threshold(s) manually adapted)
RNA Concentration: 591 ng/μl
rRNA Ratio [28s / 18s]: 0.0 Result Flagging Color:
Result Flagging Label: RIN: 2.30

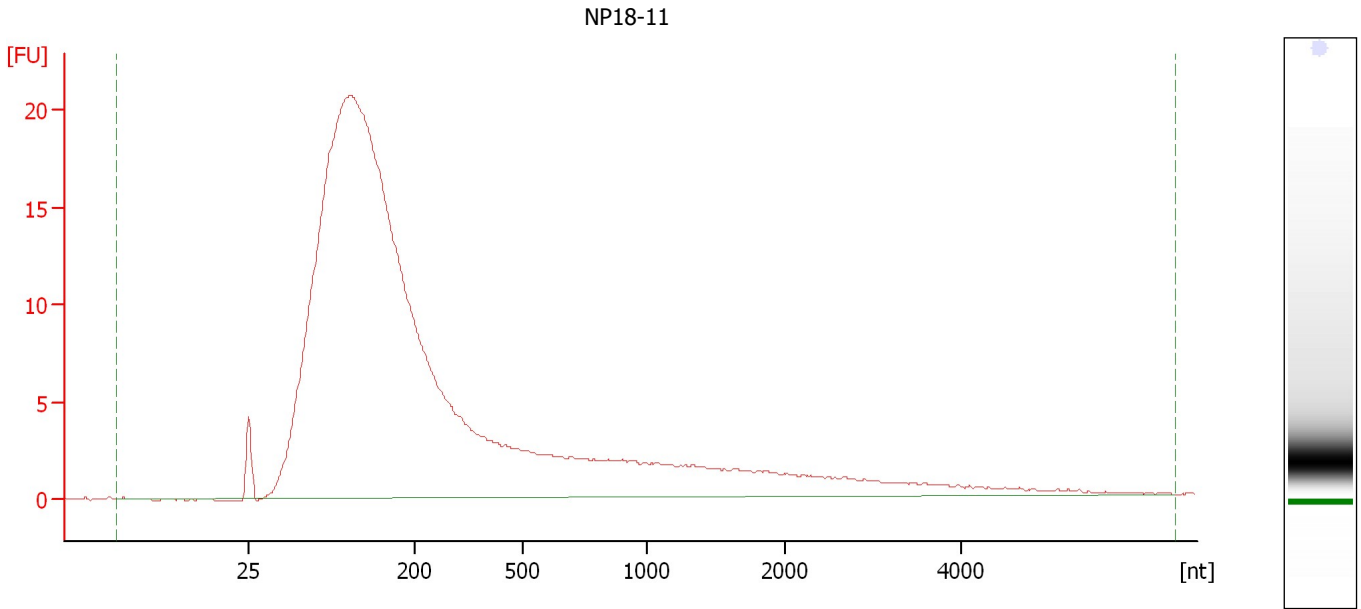
Fragment table for sample 8 : NP13-14

Name	Start Size [nt]	End Size [nt]	Area	% of total Area
18S	1,104	1,326	0.9	0.2

Assay Class: Eukaryote Total RNA Nano
Data Path: C:\...ents and Settings\Bioanalyzer\2012-02-16\2012-02-16_003.xad

Created: 2/16/2012 4:12:50 PM
Modified: 2/16/2012 4:37:06 PM

Electropherogram Summary Continued ...



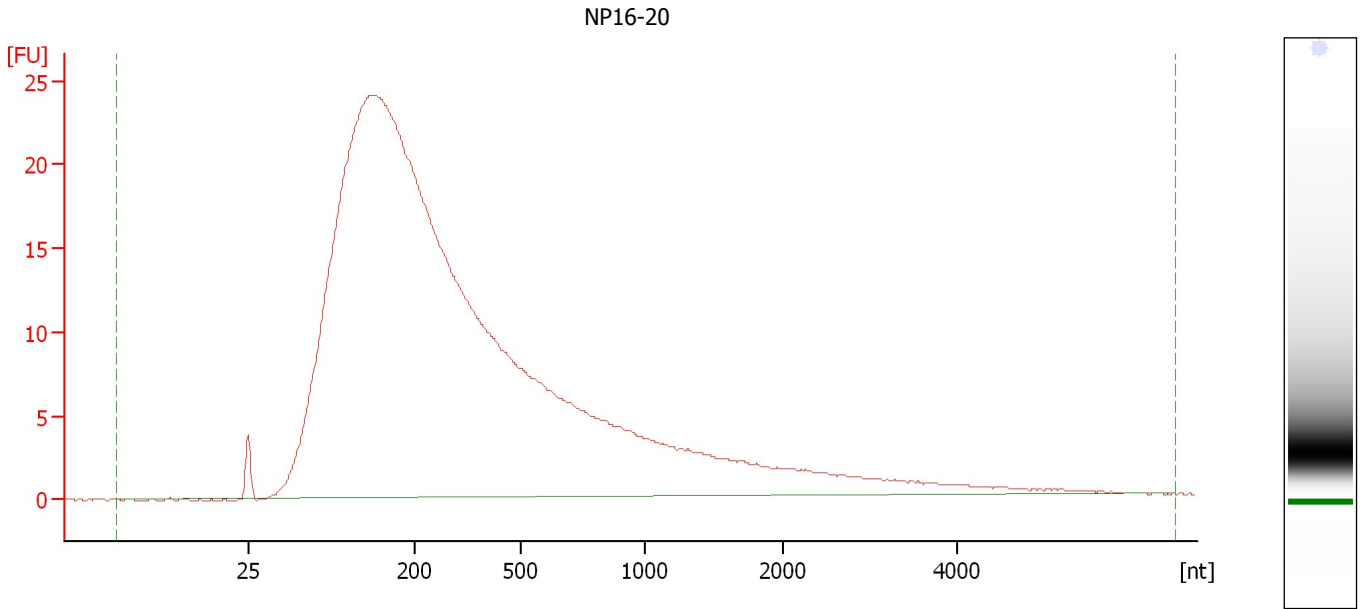
Overall Results for sample 9 : NP18-11

RNA Area:	408.2	RNA Integrity Number (RIN):	2.3 (B.02.08)
RNA Concentration:	482 ng/μl	Result Flagging Color:	
rRNA Ratio [28s / 18s]:	0.0	Result Flagging Label:	RIN: 2.30

Assay Class: Eukaryote Total RNA Nano
Data Path: C:\...ents and Settings\Bioanalyzer\2012-02-16\2012-02-16_003.xad

Created: 2/16/2012 4:12:50 PM
Modified: 2/16/2012 4:37:06 PM

Electropherogram Summary Continued ...



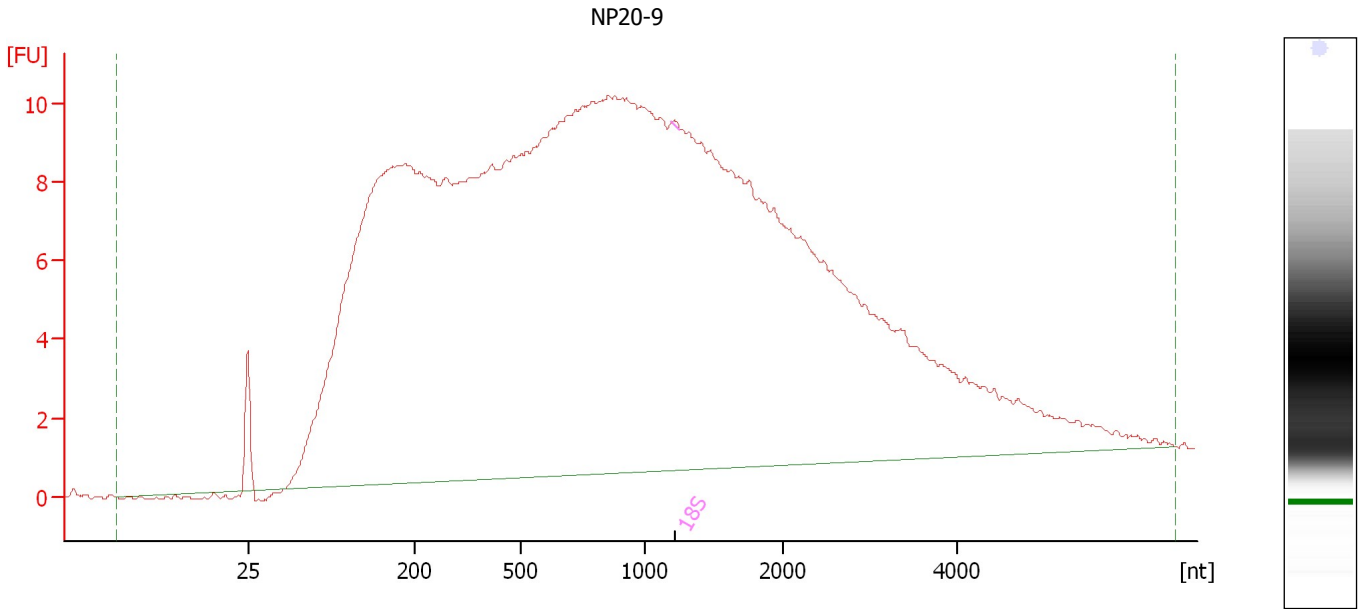
Overall Results for sample 10 : NP16-20

RNA Area:	615.0	RNA Integrity Number (RIN):	2.1 (B.02.08)
RNA Concentration:	726 ng/μl	Result Flagging Color:	
rRNA Ratio [28s / 18s]:	0.0	Result Flagging Label:	RIN: 2.10

Assay Class: Eukaryote Total RNA Nano
Data Path: C:\...ents and Settings\Bioanalyzer\2012-02-16\2012-02-16_003.xad

Created: 2/16/2012 4:12:50 PM
Modified: 2/16/2012 4:37:06 PM

Electropherogram Summary Continued ...



Overall Results for sample 11 : NP20-9

RNA Area:	510.6	RNA Integrity Number (RIN):	2.1 (B.02.08, Anomaly Threshold(s) manually adapted)
RNA Concentration:	603 ng/μl	Result Flagging Color:	
rRNA Ratio [28s / 18s]:	0.0	Result Flagging Label:	RIN: 2.10

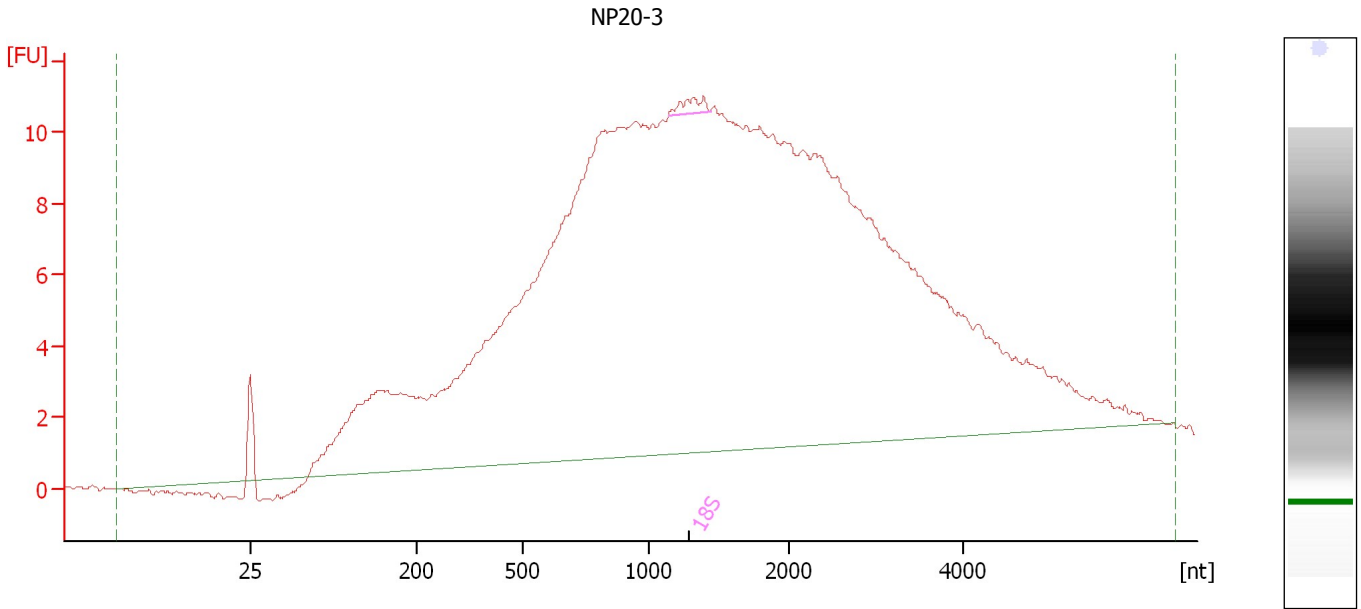
Fragment table for sample 11 : NP20-9

Name	Start Size [nt]	End Size [nt]	Area	% of total Area
18S	1,193	1,246	0.1	0.0

Assay Class: Eukaryote Total RNA Nano
 Data Path: C:\...ents and Settings\Bioanalyzer\2012-02-16\2012-02-16_003.xad

Created: 2/16/2012 4:12:50 PM
 Modified: 2/16/2012 4:37:06 PM

Electropherogram Summary Continued ...



Setpoint Deviations for sample 12 : NP20-3

Width Threshold [s] : 0.01

Overall Results for sample 12 : NP20-3

RNA Area:	417.0	RNA Integrity Number (RIN):	2.3 (B.02.08, Anomaly Threshold(s) manually adapted)
RNA Concentration:	493 ng/μl	Result Flagging Color:	
rRNA Ratio [28s / 18s]:	0.0	Result Flagging Label:	RIN: 2.30

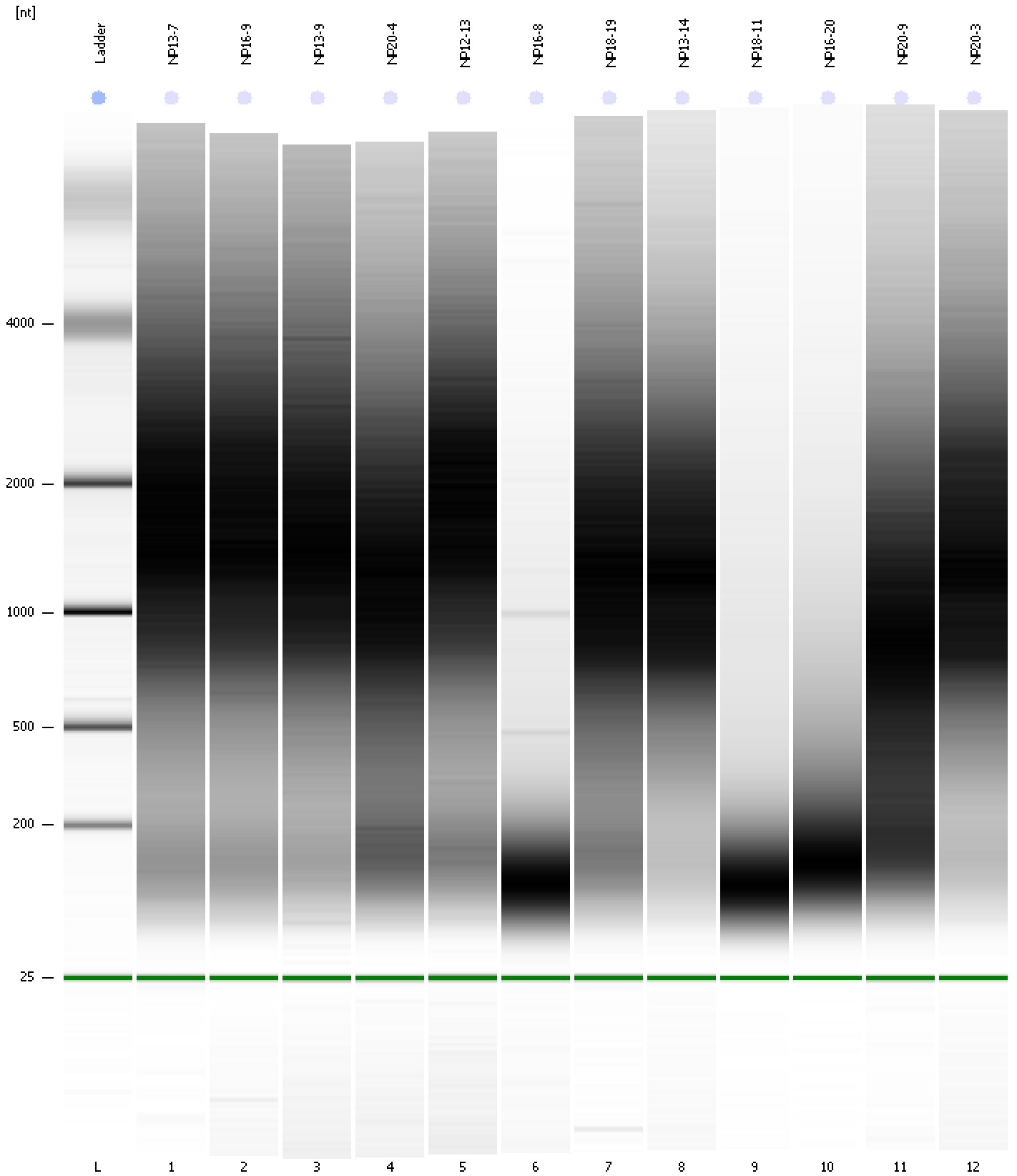
Fragment table for sample 12 : NP20-3

Name	Start Size [nt]	End Size [nt]	Area	% of total Area
18S	1,143	1,441	1.2	0.3

Assay Class: Eukaryote Total RNA Nano
Data Path: C:\...ents and Settings\Bioanalyzer\2012-02-16\2012-02-16_003.xad

Created: 2/16/2012 4:12:50 PM
Modified: 2/16/2012 4:37:06 PM

Gel Image



Assay Class: Eukaryote Total RNA Nano
 Data Path: C:\...ents and Settings\Bioanalyzer\2012-02-16\2012-02-16_003.xad

Created: 2/16/2012 4:12:50 PM
 Modified: 2/16/2012 4:37:06 PM

Run Logbook

Description	Number	Source	Category	Sub Category	Time	Time Zone	User	Host
Run ended on port 1 (Number of wells acquired: 13)		Instrument	Run		2/16/2012 4:35:53 PM	(GMT --08:00) Pacific Standard Time	UC Davis	D8XSMGH1
Run started on port 1 (File: C:\Documents and Settings\Bioanalyzer\2012-02-16\2012-02-16_003.xad)		Instrument	Run		2/16/2012 4:12:55 PM	(GMT --08:00) Pacific Standard Time	UC Davis	D8XSMGH1
Product Number : G2938B		Instrument	Run		2/16/2012 4:12:55 PM	(GMT --08:00) Pacific Standard Time	UC Davis	D8XSMGH1
Name :		Instrument	Run		2/16/2012 4:12:55 PM	(GMT --08:00) Pacific Standard Time	UC Davis	D8XSMGH1
Vendor : Agilent Technologies		Instrument	Run		2/16/2012 4:12:55 PM	(GMT --08:00) Pacific Standard Time	UC Davis	D8XSMGH1
Serial# : DE13701086		Instrument	Run		2/16/2012 4:12:55 PM	(GMT --08:00) Pacific Standard Time	UC Davis	D8XSMGH1
Firmware : C.01.069		Instrument	Run		2/16/2012 4:12:55 PM	(GMT --08:00) Pacific Standard Time	UC Davis	D8XSMGH1
Cartridge : Electrode		Instrument	Run		2/16/2012 4:12:55 PM	(GMT --08:00) Pacific Standard Time	UC Davis	D8XSMGH1